



Service Information

File In/With:

SI0386

New

518

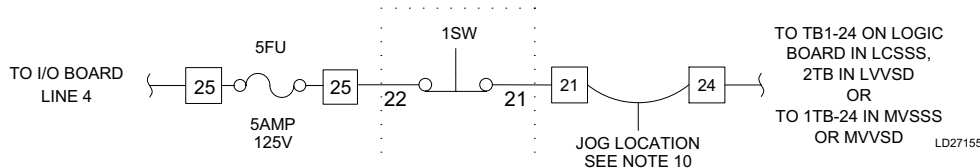
Equipment Affected: YK MOD H and YZ MOD A Chillers with 03630 Microboard

Notable Differences to Start Circuit Wiring

BACKGROUND

The new YK Mod H and YZ Mod A chillers have noticeable start circuit differences. The start circuit runs from the Control Panel to the Starter and through the Safety Stop switch in the following order:

- from the I/O board through a fuse,
- through the safety switch to TB6-21,
- through a jumper to TB6-24, and
- out to the Starter.



SOLUTION

Installing a Jog-Switch

With this new wiring arrangement, you should remove the jumper between **TB6-21** and **TB6-24** and install the jog switch at that location.

WARNING: DO NOT install a jog between TB6-25 and TB6-24 as was done previously, since this bypasses the Safety Stop switch.

Microboard to VSD Communications

The communications between Microboard and VSD now use a pair of fiber optic cables. This eliminates noise and ground loop issues. If the Chiller has a non-VSD Starter that uses the wired RS-485 for communications, then ensure that the gray rubber plugs are installed within the fiber optic receivers and transmitters. If these plugs are removed, then the ambient light may cause noise in the communications between the Starter and the Microboard.

Work on this equipment should only be done by properly trained personnel who are qualified to work on this type of equipment. Failure to comply with this requirement could expose the worker, the equipment and the building and its inhabitants to the risk of injury or property damage.

The instructions on this service bulletin are written assuming the individual who will perform this work is a fully trained HVAC & R journeyman or equivalent, certified in refrigerant handling and recovery techniques, and knowledgeable with regard to electrical lock out/tag out procedures. The individual performing this work should be aware of and comply with all Johnson Controls, national, state and local safety and environmental regulations while carrying out this work. Before attempting to work on any equipment, the individual should be thoroughly familiar with the equipment by reading and understanding the associated service literature applicable to the equipment. If you do not have this literature, you may obtain it by contacting a Johnson Controls Service Office.

Should there be any question concerning any aspect of the tasks outlined in this bulletin, please consult a Johnson Controls Service Office prior to attempting the work. Please be aware that this information may be time sensitive and that Johnson Controls reserves the right to revise this information at any time. Be certain you are working with the latest information.