



# Service Information

File In/With: -

SI0338

New 117

Equipment Affected: YVAA

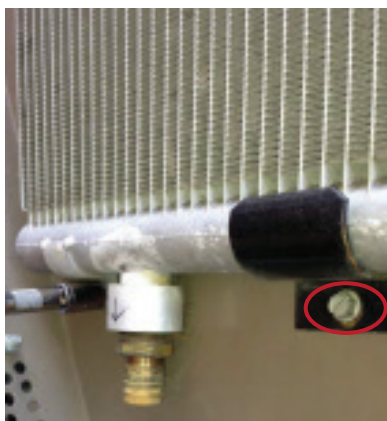
Microchannel VSD Outdoor Glycol Coil

## GENERAL

In keeping up to date with YVAA product enhancements and field reliability, the outdoor VSD microchannel coil has been changed to a copper round tube coil. As of (June 2015), all YVAA units will be shipped with a copper/aluminum coil. Replacement coils from Baltimore Parts will be of the copper aluminum variety. The following are instructions for replacement of the old microchannel coil with the new copper/aluminum coil.

## Replace Glycol Coil

1. Purchase the replacement coil kit. Refer to *Table 1 on page 4* for part number.
2. Using 1/2" socket, remove bolts securing old glycol coil to v-module.
3. Place an absorbant material or a towel in both inlet and outlet fittings of the coil. Glycol will leak from the header tube when removed.
4. Remove the old coil from the v-module.
5. Install the top bracket onto the round tube coil using the self tapping screws.



LD21609



LD21610

Work on this equipment should only be done by properly trained personnel who are qualified to work on this type of equipment. Failure to comply with this requirement could expose the worker, the equipment and the building and its inhabitants to the risk of injury or property damage.

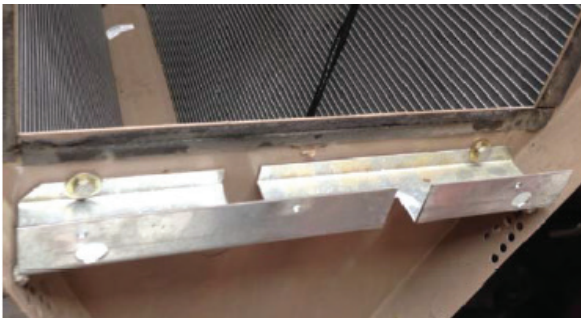
The instructions on this service bulletin are written assuming the individual who will perform this work is a fully trained HVAC & R journeyman or equivalent, certified in refrigerant handling and recovery techniques, and knowledgeable with regard to electrical lock out/tag out procedures. The individual performing this work should be aware of and comply with all Johnson Controls, national, state and local safety and environmental regulations while carrying out this work. Before attempting to work on any equipment, the individual should be thoroughly familiar with the equipment by reading and understanding the associated service literature applicable to the equipment. If you do not have this literature, you may obtain it by contacting a Johnson Controls Service Office.

Should there be any question concerning any aspect of the tasks outlined in this bulletin, please consult a Johnson Controls Service Office prior to attempting the work. Please be aware that this information may be time sensitive and that Johnson Controls reserves the right to revise this information at any time. Be certain you are working with the latest information.



LD21732

6. Install the bottom bracket from the kit on chiller, using the large washer and bolt provided in the kit.



LD21733

7. Place the new round tube coil on the v-module.



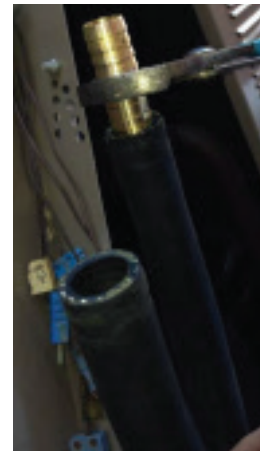
LD21734

8. Install all hardware to mount the top bracket to chiller and the self tapping screws used to mount the bottom bracket to the coil.



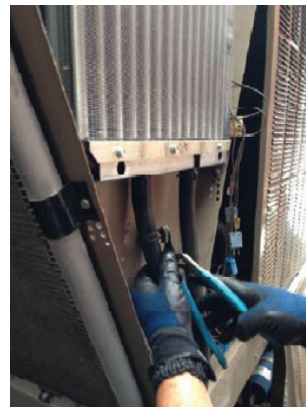
LD21735

9. Disconnect the bypass fittings at all coils.



LD21736

10. Reconnect the lines on the glycol coils. Ensure the inlet hose is on the left port of the coil and the outlet is on the right port of the coil. Ensure all hose clamps have been reinstalled.

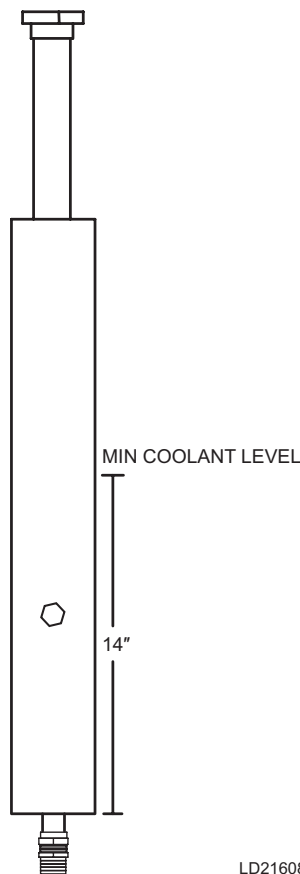


LD21737

11. Repeat the process for all glycol coils on the unit.

## Glycol Filling

1. Ensure the system has been drained of glycol and flushed once with fresh glycol.
2. Ensure the pump discharge line and hose clamp are reconnected.
3. Ensure the plugs are reinstalled on the pump.
4. Ensure the stand pipe return and hose clamp are reconnected.
5. Ensure all glycol coils have been replaced with new glycol coils and all hoses and hose clamps have been reconnected.
6. Fill the stand pipe with fresh glycol. Fill until glycol is 14 inches from the bottom of the stand pipe.



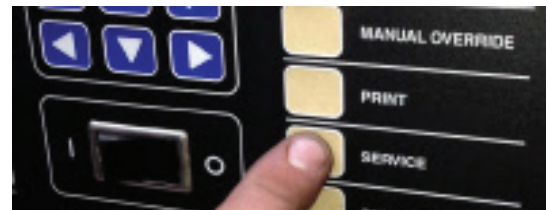
7. Run the glycol pump for 10 seconds (refer to the following section on running the glycol pump in service mode).
8. Repeat steps 6 and 7 until no air bubbles are present or until the level remains constant.
9. Ensure the level is filled to 14 inches from the bottom of the stand pipe.
10. Allow the system to run for 30 minutes, recheck the level and fill as necessary.

## Run Glycol Pump in Service Mode

1. Ensure the unit switch is in the off position.



2. Press the “service” button.
3. Enter the service mode by pressing “9675” then the “check” button.



4. Use the “right arrow” button and scroll to “VSD Cooling Fan/Pump”. Status should be off.
5. Press the “check” button to turn the pump status on. Pressing the “check” button again will turn the pump off.



TABLE 1 - GLYCOL QUANTITY

YVAA MODEL	QTY GLYCOL COILS	NON-COATED TUBE AND FIN KIT	POST COATED TUBE AND FIN KIT	REQUIRED GLYCOL FOR FLUSHING (GAL)	REQUIRED GLYCOL FOR SYSTEM FILL (GAL)	TOTAL GLYCOL FOR PROCEDURE (GAL)
0153/0543	2	492-25975-001	492-25975-011	1.50	4.25	10
0183/0643	2	492-25975-001	492-25975-011	1.50	4.25	10
0213/0743	2	492-25975-001	492-25975-011	1.50	4.25	10
0233/0843	2	492-25975-001	492-25975-011	1.50	4.25	10
0263/0943	2	492-25975-001	492-25975-011	1.50	4.25	10
0273/0963	2	492-25975-001	492-25975-011	1.50	4.25	10
0303/1093	3	492-25975-002	492-25975-012	1.50	7.25	10
0323/1143	3	492-25975-002	492-25975-012	1.50	7.25	10
0333/1173	3	492-25975-002	492-25975-012	1.50	7.25	10
0343/1193	3	492-25975-002	492-25975-012	1.50	7.25	10
0373/1343	3	492-25975-002	492-25975-012	5.00	7.25	15
0413/1443	4	492-25975-003	492-25975-013	5.00	9.00	15
0443/1543	4	492-25975-003	492-25975-013	5.00	9.00	15
0483/1693	4	492-25975-003	492-25975-013	5.00	9.00	15
0523/1843	4	492-25975-003	492-25975-013	5.00	9.00	15
0165/0565	2	492-25975-001	492-25975-011	1.50	4.25	10
0195/0665	2	492-25975-001	492-25975-011	1.50	4.25	10
0215/0765	2	492-25975-001	492-25975-011	1.50	4.25	10
0245/0865	2	492-25975-001	492-25975-011	1.50	4.25	10
0275/0965	2	492-25975-001	492-25975-011	1.50	4.25	10
0295/1015	3	492-25975-002	492-25975-012	1.50	7.25	10
0305/1065	3	492-25975-002	492-25975-012	1.50	7.25	10
0345/1215	3	492-25975-002	492-25975-012	1.50	7.25	10
0375/1315	3	492-25975-002	492-25975-012	5.00	7.25	15
0425/1515	4	492-25975-003	492-25975-013	5.00	9.00	15
0475/1665	4	492-25975-003	492-25975-013	5.00	9.00	15
0178/0588	2	492-25975-001	492-25975-011	1.50	4.25	10
0198/0688	2	492-25975-001	492-25975-011	1.50	4.25	10
0218/0788	2	492-25975-001	492-25975-011	1.50	4.25	10
0248/0888	2	492-25975-001	492-25975-011	1.50	4.25	10
0278/0988	2	492-25975-001	492-25975-011	1.50	4.25	10
0308/1088	3	492-25975-002	492-25975-012	1.50	7.25	10
0318/1188	3	492-25975-002	492-25975-012	1.50	7.25	10
0368/1288	3	492-25975-002	492-25975-012	5.00	7.25	15
0398/1388	4	492-25975-003	492-25975-013	5.00	9.00	15
0428/1488	4	492-25975-003	492-25975-013	5.00	9.00	15
0200/0700	2	492-25975-001	492-25975-011	1.50	4.25	10
0500/1750	4	492-25975-003	492-25975-013	5.00	9.00	15