 PRODUCT DRAWING	Supersedes: Nothing FORM 160.55-PW5 (1199) <b style="text-align: center;">WIRING DIAGRAM – FIELD CONNECTIONS MILLENNIUM™ MODEL YT CHILLERS (STYLE J) WITH MOD. B SOLID STATE STARTER
YORK INTERNATIONAL CORPORATION P.O. Box 1592, YORK, PA 17405	
CONTRACTOR _____ ORDER NO. _____ YORK CONTRACT NO. _____ YORK ORDER NO. _____	PURCHASER _____ JOB NAME _____ LOCATION _____ ENGINEER _____
<input type="checkbox"/> REFERENCE DATE _____	<input type="checkbox"/> APPROVAL DATE _____
<input type="checkbox"/> CONSTRUCTION DATE _____	

JOB DATA:

CHILLER MODEL NO. YT _____ NO. OF UNITS _____

SOLID STATE STARTER, MODEL NO. SSS- _____ L () _____ B

MOTOR/STARTER POWER _____ VOLTS, 3-PHASE _____ HZ

OPTIONAL FACTORY INSTALLED DISCONNECT SWITCH _____ AMPS or

OPTIONAL FACTORY INSTALLED CURCUIT BREAKER _____ AMPS

NOTES:

1. All field wiring shall be in accordance with the current edition of the National Electrical Code (N.E.C.) as well as all other applicable codes and specifications.
4. Items marked * furnished by York International Corporation.
2. Solid State Starter shall be grounded in accordance with the 1999 N.E.C. (Paragraph 250-118) for equipment grounding. Flexible conduit is required for final connection to the starter. When a separate grounding conductor is required, it must be a copper conductor only and sized per the 1999 N.E.C. (Table 250-122). Per 1999 N.E.C. (Paragraph 250-120 (f) (I)), where multiple (parallel) conduits are used each must contain a grounding conductor. See Note 8 for grounding lug wire range.
5. Items marked ** available from York International Corporation at additional cost.
3. Wiring, electrical conduit, junction boxes, fused disconnect switches (FDS), or circuit breakers, starters (M), push-button stations (PB), manual-off-automatic switch (S), flow switch (FLS), and control relays furnished by others unless otherwise specified.
6. Control Center power supply 115V-50/60 Hz, 1.5KVA capacity for control center only, is supplied by a control power transformer (1T) mounted on the side of the Solid State Starter as shown. It is factory wired.
7. Starter power conduit connection (cut holes to suit) locations, motor full load amperes (FLA), locked rotor amperes and inrush amperes per Product Drawing Form 160.55-PA1. Flexible conduit must be used for final connections to starter. Multiple conduits shall contain an equal number of wires from each phase in each conduit to prevent overheating per 1999 N.E.C. (Paragraph 300-20 (a)). Use copper conductors only; DO NOT USE aluminum conductors. See Note 8 for factory furnished starter terminal lug wire ranges.

8. The following terminal lugs are factory furnished for field wiring connections when a factory-installed disconnect switch or circuit breaker is not supplied. All lugs are rated AL9CU.

Starter Model No. w/o Disconnect/ Circuit Breaker Option	Line Side Lugs		Grounding Lug, Wire Range, Quantity AL9CU
	Quan. Per Terminal	Wire Range	
SSS 7L	1	#4-6000 kcmil	#14-1/0, one bbl.
SSS 14L	2	#2-6000 kcmil	#14-1/0, two bbl.
SSS 26L	3	#2-6000 kcmil	#4-6000 kcmil, two bbl. or
SSS 33L	4	#2-6000 kcmil	1/0 - 250 kcmil, four bbl.

The following terminal lugs are factory furnished for field wiring connections when a factory-installed disconnect switch or circuit breaker is supplied.

Starter Model No. & Available Disconnect Switch/ Circuit Breaker Amp Rating (See Note 17 (a))	Line Side Lugs			Grounding Lug, Wire Range, Quantity AL9CU
	Quan. Per Terminal	Wire Range	Lug Rating	
SSS 7L, 250A	1	#6-350 kcmil	AL7CU	#14-1/0, one bbl.
SSS 7L, 400A	2	3/0-250 kcmil	AL7CU	
SSS 14L, 400A	2	3/0-250 kcmil	AL7CU	#14-1/0, two bbl.
SSS 14L, 600A	2	250-500 kcmil	AL9CU	
SSS 26L, 1200A	4	4/0-500 kcmil	AL9CU	#4-600 kcmil two bbl. or
SSS 33L, 1200A	4	4/0-500 kcmil	AL9CU	1/0-250 kcmil, four bbl.

9. Condenser water pump motor starter (3M) holding coil to be furnished for 115V-50/60 Hz. The power requirements for the water pump starter (3M) must be a max. of 1 Amp holding and 10 Amps inrush. If power requirements exceed this value, furnish coil for line voltage, and control relay with 115V coil.

10. Units shipped knocked down require field connection of harnesses to control panel, power wiring between compressor motor and starter, and oil pump starter to solid state starter. These harnesses and power wiring are furnished by York International Corporation for field assembly and consist of proper lengths of flexible conduit with necessary connectors, and contain the wires (shown in Note 13) properly terminated and marked.

11. Wire #14 AWG copper for one way distance of less than 175 feet. Wire #12 AWG copper for one way distance of more than 175 feet, but less than 300 feet.

12. Wiring diagram for YORK Graphic Control Center Form 160.55-PW2. Field wiring modifications per Form 160.55-PW7. Wiring diagram for YORK Mod. B Solid State Starter Form 160.04-PW1.

13. The following interconnecting wires are factory supplied when a YORK Mod. B Solid State Starter is used. (See Form 160.55-PW2.)

a. Starter to control center – L, 2, 16, 24, 53; 3-conductor shielded cable, 2-conductor shielded cable.

b. Starter to oil pump motor starter – 101, 102, 103.

c. Starter to cooling pump – 2, 108, GRD.

14. 60 Hz oil pump motor for compressor codes B, C, and E are 3/4 HP, and compressor code F is 1 HP. 50 Hz oil pump motor is 1 HP for all compressor codes. Full load amperes for oil pump motor (furnished by YORK International Corporation with starter factory wired) and 1.5 KVA control power transformer (furnished by YORK International Corporation and factory wired) to be used with Notes 15, 16 and 17 are:

3-PHASE VOLTAGE	Hz	OIL PUMP MOTOR (AMPS)		CONTROL POWER (1T) TRANSFORMER (AMPS)
		3/4 HP	1 HP	
200/208	60	3.2	4.0	7.5
220/230/240	60	3.4	4.6	6.8
440/460/480	60	1.8	2.3	3.4
550/575/600	60	1.3	1.6	2.7
380/400/415	50	2.2	2.2	3.9
380	60	1.9	2.3	3.9

15. If an optional circuit breaker is not provided the branch circuit overcurrent protection device(s) for the YORK Solid State Starter must be a time delay type with a rating which is the smaller of the two values listed below (a) or (b):

a. The next standard fuse/breaker rating below:
2.25 (Compressor Motor FLA) + Oil Pump Motor Amps + Control Transformer Amps

b. A rating limited by the starter size as follows:

STARTER MODEL NO.	MAX. FUSE/BREAKER SIZE (AMPS)
SSS 7L	450
SSS 14L	800
SSS 26L	1600
SSS 33L	1600

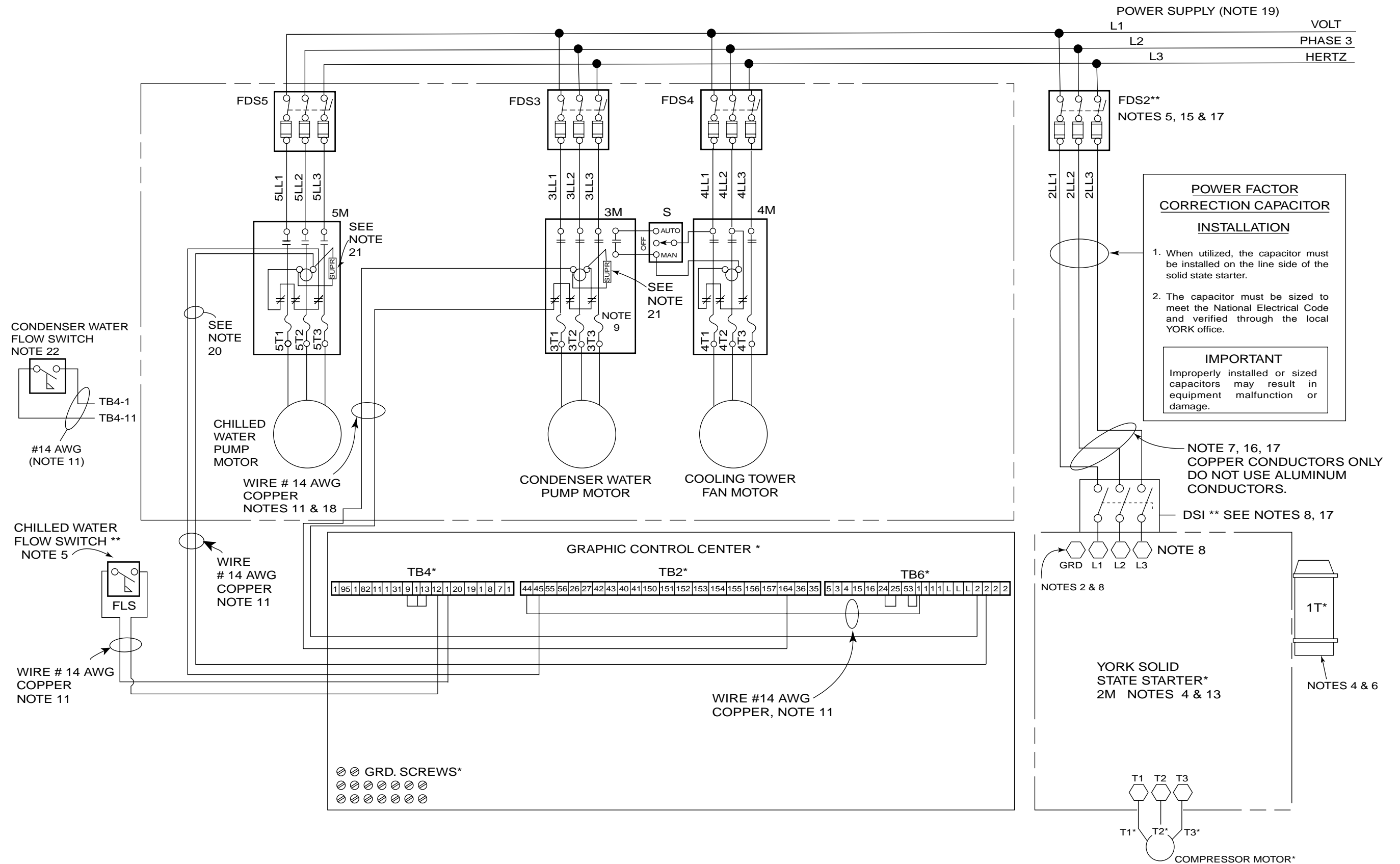
Where 2.25 factor is per 1999 N.E.C. (Para. 440-22 (a) and (b)); FLA is per Note 7; oil pump motor and control power transformer Amps per Note 14.

16. The YORK Mod. B Solid State Starter power wiring ampacity shall be calculated as follows:

Model YT minimum circuit ampacity:

Ampacity = 1.25 (Compressor-Motor FLA) + Oil Pump Motor Amps + Control Transformer Amps per Note 14.

WIRING DIAGRAM FIELD CONNECTIONS (SOLID STATE STARTER)



LD05002

17. If the fused disconnect switch (FDS2) is not located in sight (1999 N.E.C. Para. 440-14) of the YORK Mod. B Solid State Starter, a non-fused disconnect switch (not shown) shall be located in sight of the Solid State Starter; between FDS2 and Solid State Starter. The ampere rating shall be determined as follows for the disconnect switch of FDS2: The larger of

a. Amp Rating = $1.15 \text{ (Compressor Motor FLA + Oil Pump Motor Amps + Control Transformer Amps)}$

– or –

b. The size required to mount the fuses determined in Note 15 (if a fused disconnect is employed).

Where 115% factor is per 1999 N.E.C. (Para. 440-12b (2)); FLA is per Note 7; oil pump motor and control power transformer Amps per Note 14. An optional factory mounted and wired disconnect switch or circuit breaker is available within the Mod. B SSS (See Note 8).

18. Control circuit wiring for 3M condenser water pump motor starter is shown for cooling only application.

19. The main power transformer should be adequately sized such that the transformer voltage drop does not exceed 10% during unit start-up. Also, the supply voltage, at starter input terminals, during start-up must be maintained above the minimum value specified in the table. Note that while the YORK chiller will perform acceptably during startup with this amount of voltage drop, the performance of other equipment connected to the supply transformer could be adversely affected.

3-PHASE VOLTAGE	Hz	MINIMUM VOLTAGE AT STARTER INPUT TERMINALS DURING START-UP
200/208	60	160
220/230/240	60	185
440/460/480	60	370
550/575/600	60	460
380	50/60	305
400	50	320
415	50	335

20. Automatic control of the chilled water pump by the Graphic Control Center is shown. Chilled water pump motor starter (5M) holding coil to be furnished for 115V-50/60 Hz. The power requirements for the water pump starter (5M) must be a maximum of 1 Amp holding and 8 Amps inrush. If power requirements exceed this value, furnish coil for line voltage, and control relay with 115V coil.

The pumps operate during oil pump prerun, during compressor operation & during cycling shutdown.

21. Each 115VAC field-connected inductive load, i.e. relay coil, motor starter coil, etc. shall have a transient suppressor wired (by others) in parallel with its coil, physically located at the coil. Spare transient suppressors are factory supplied in a bag attached to the top of the keypad cable clamp in the Control Center.

22. The Condenser Flow Switch is optional. If not present, a jumper must be installed between TB4-11 and TB4-1.



Proud Sponsor
of the 2000
U.S. Olympic Team

36USC380