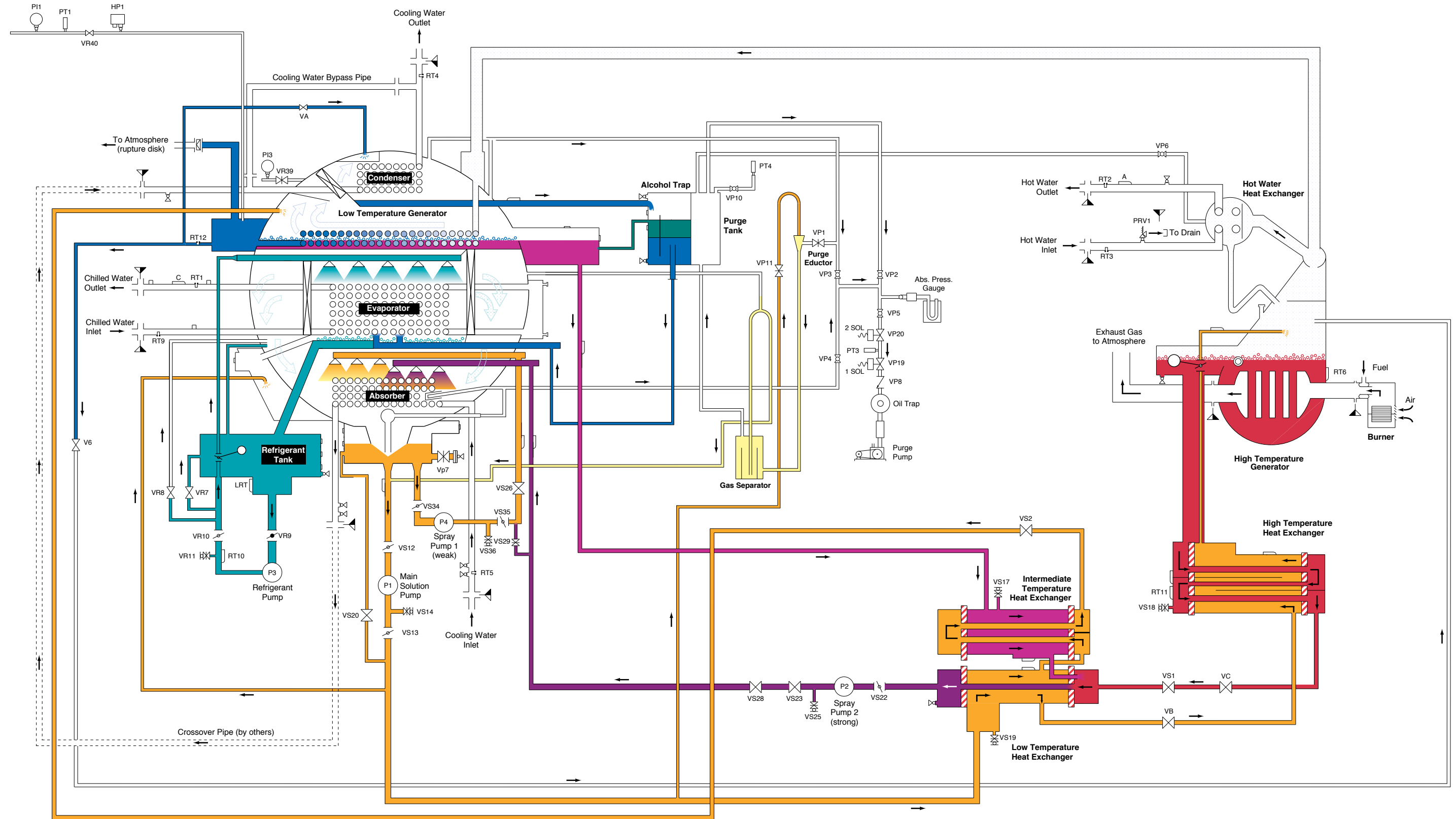


- |  |   |
|--|---|
| <span style="color: orange;">—</span> Dilute solution from absorber to high, low temperature generators and absorber sprays on cooling water inlet end | <span style="color: teal;">—</span> Refrigerant liquid (low & intermediate temperature) |
| <span style="color: purple;">—</span> Intermediate solution to absorber sprays   | <span style="color: blue;">—</span> Refrigerant liquid (high temperature)               |
| <span style="color: blue;">—</span> Concentrated solution from low temperature generator   | <span style="color: white;">—</span> Refrigerant vapor                                  |
| <span style="color: red;">—</span> Concentrated solution from high temperature generator   | <span style="color: green;">—</span> Alcohol  |

NOTE: Some valves may differ between various models

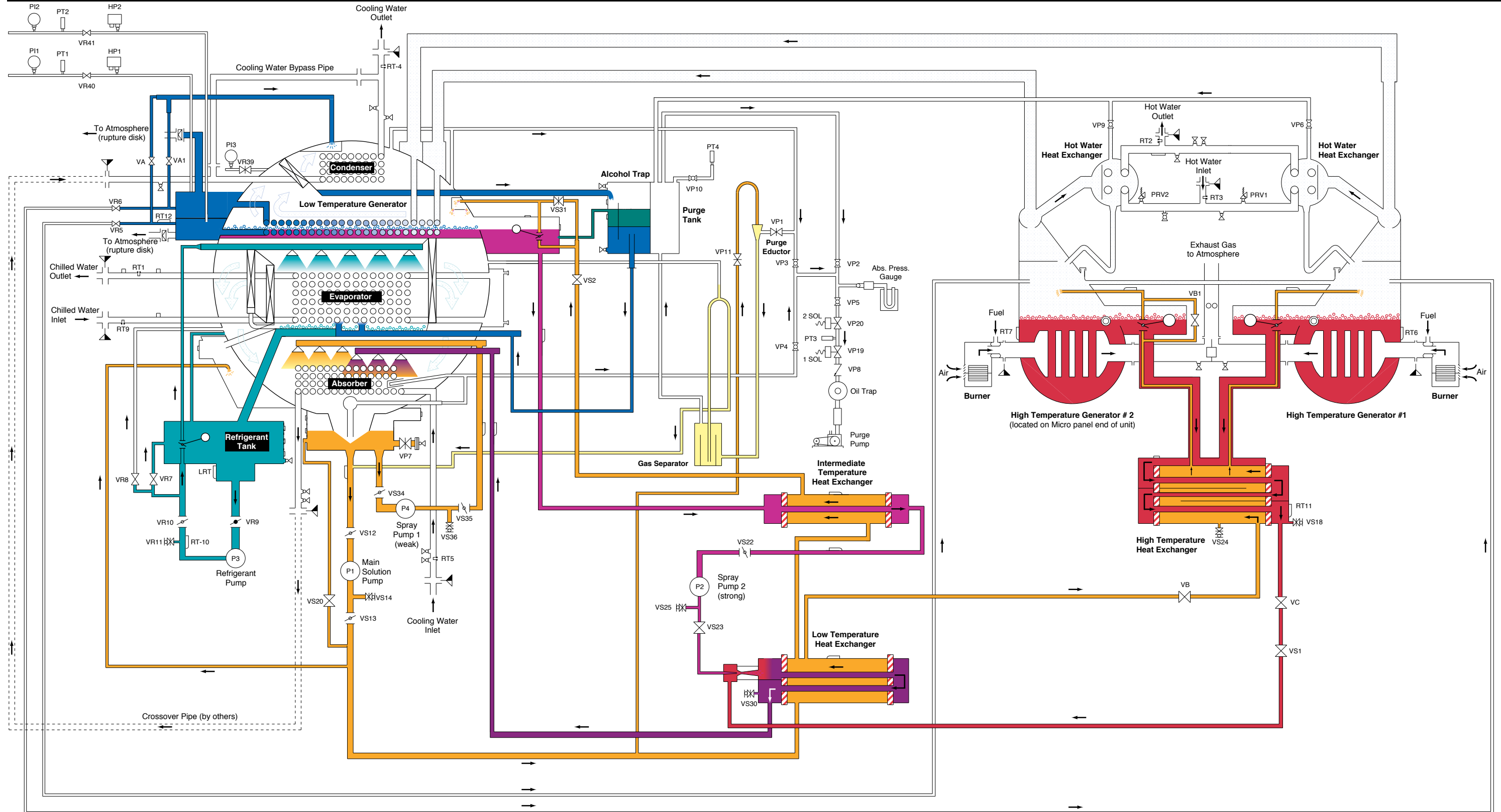
adn 10/17/95 YPCDF17G



NOTE: Some valves may differ between various models

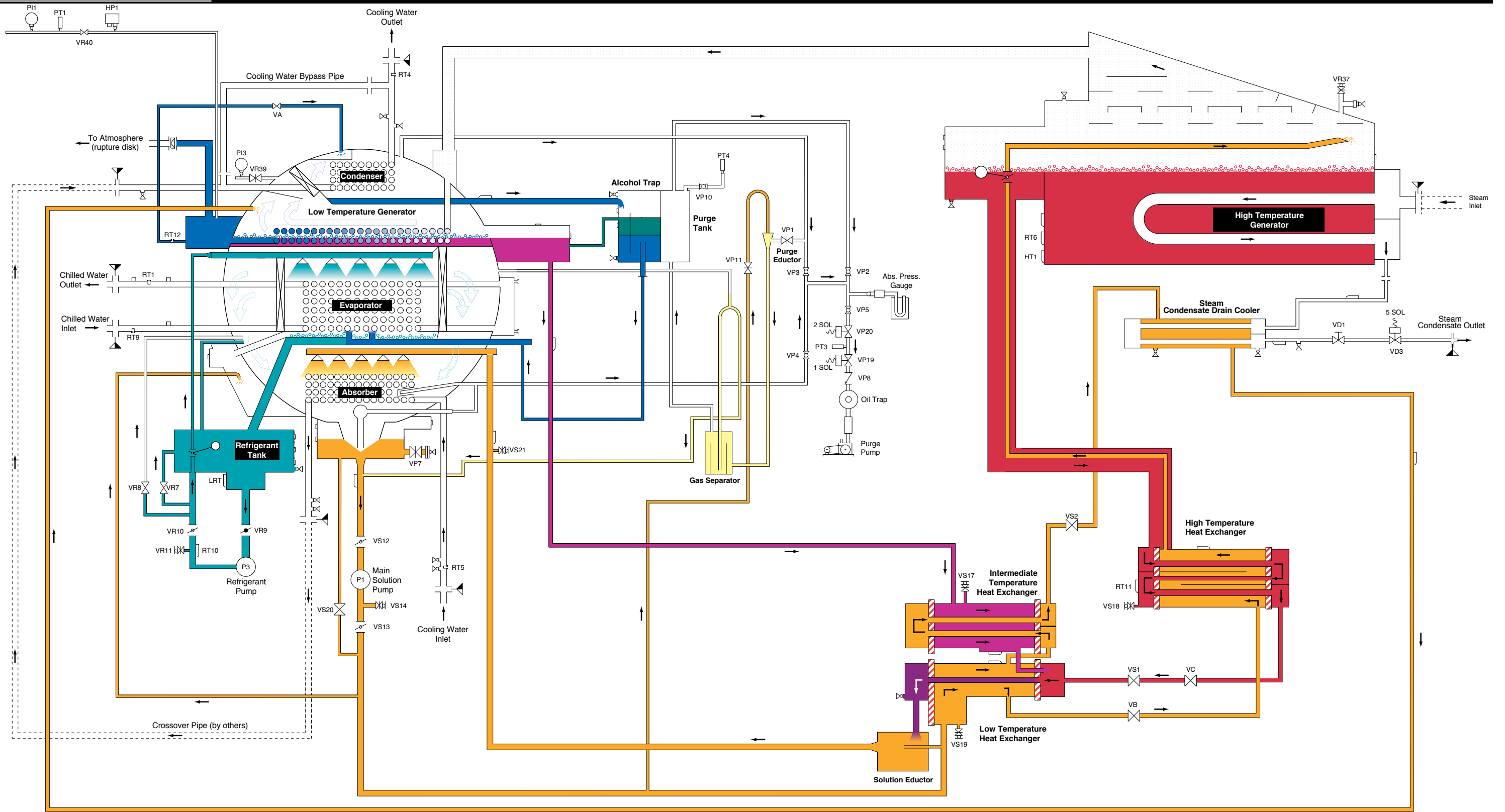
- |  |   |
|--|---|
| <span style="color: orange;">—</span> Dilute solution from absorber to high, low temperature generators and absorber sprays on cooling water inlet end | <span style="color: cyan;">—</span> Refrigerant liquid (low & intermediate temperature) |
| <span style="color: purple;">—</span> Intermediate solution to absorber sprays   | <span style="color: darkblue;">—</span> Refrigerant liquid (high temperature)           |
| <span style="color: blue;">—</span> Concentrated solution from low temperature generator   | <span style="color: white;">—</span> Refrigerant vapor                                  |
| <span style="color: red;">—</span> Concentrated solution from high temperature generator   | <span style="color: green;">—</span> Alcohol  |

adn 10/19/95 YPCDF19G



NOTE: Some valves may differ between various models

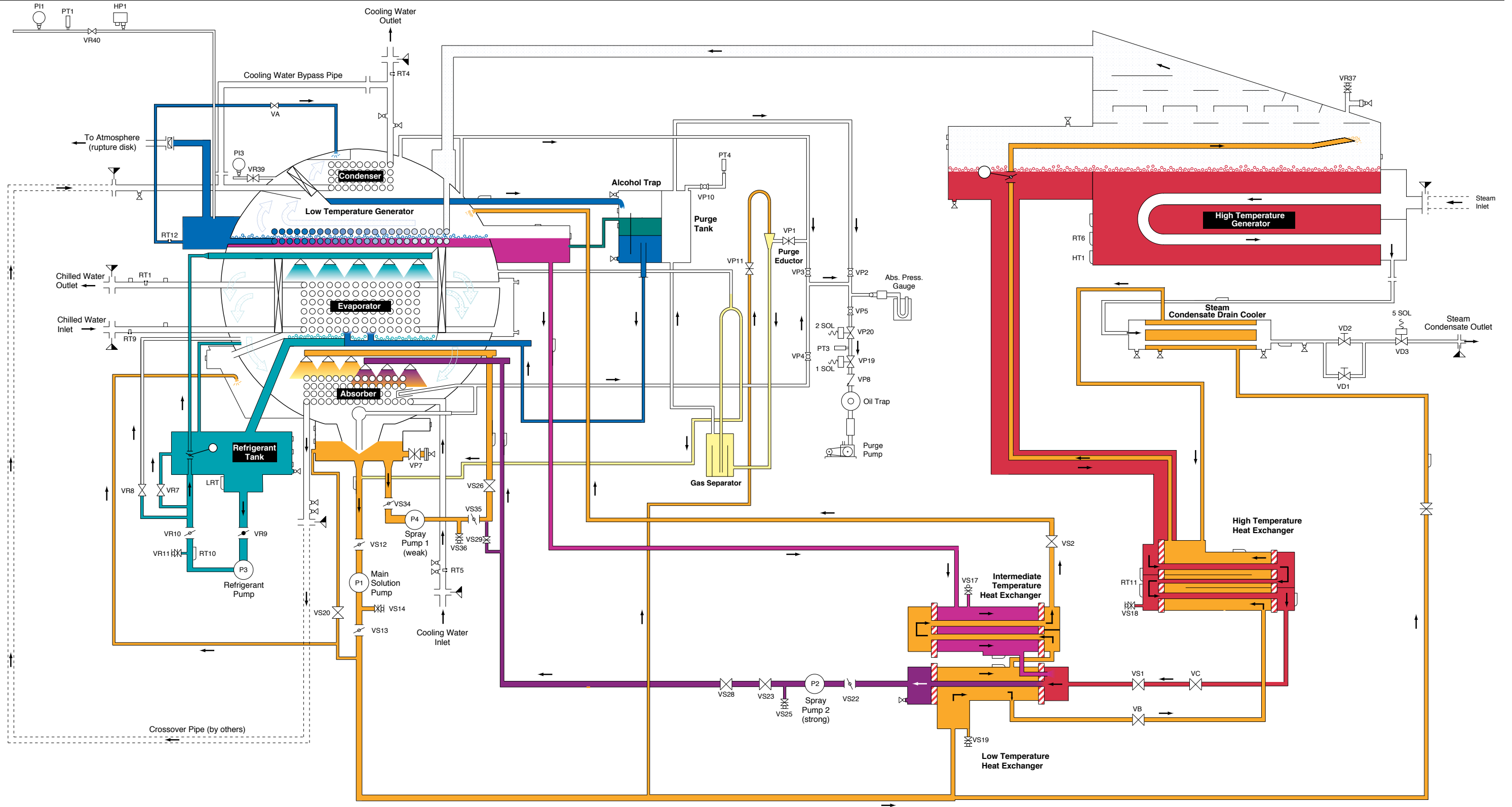
- Dilute solution from absorber to high, low temperature generators and absorber sprays on cooling water inlet end
- Intermediate solution to absorber sprays
- Concentrated solution from low temperature generator
- Concentrated solution from high temperature generator
- Refrigerant liquid (low & intermediate temperature)
- Refrigerant liquid (high temperature)
- Refrigerant vapor
- Alcohol



NOTE: Some valves may differ between various models

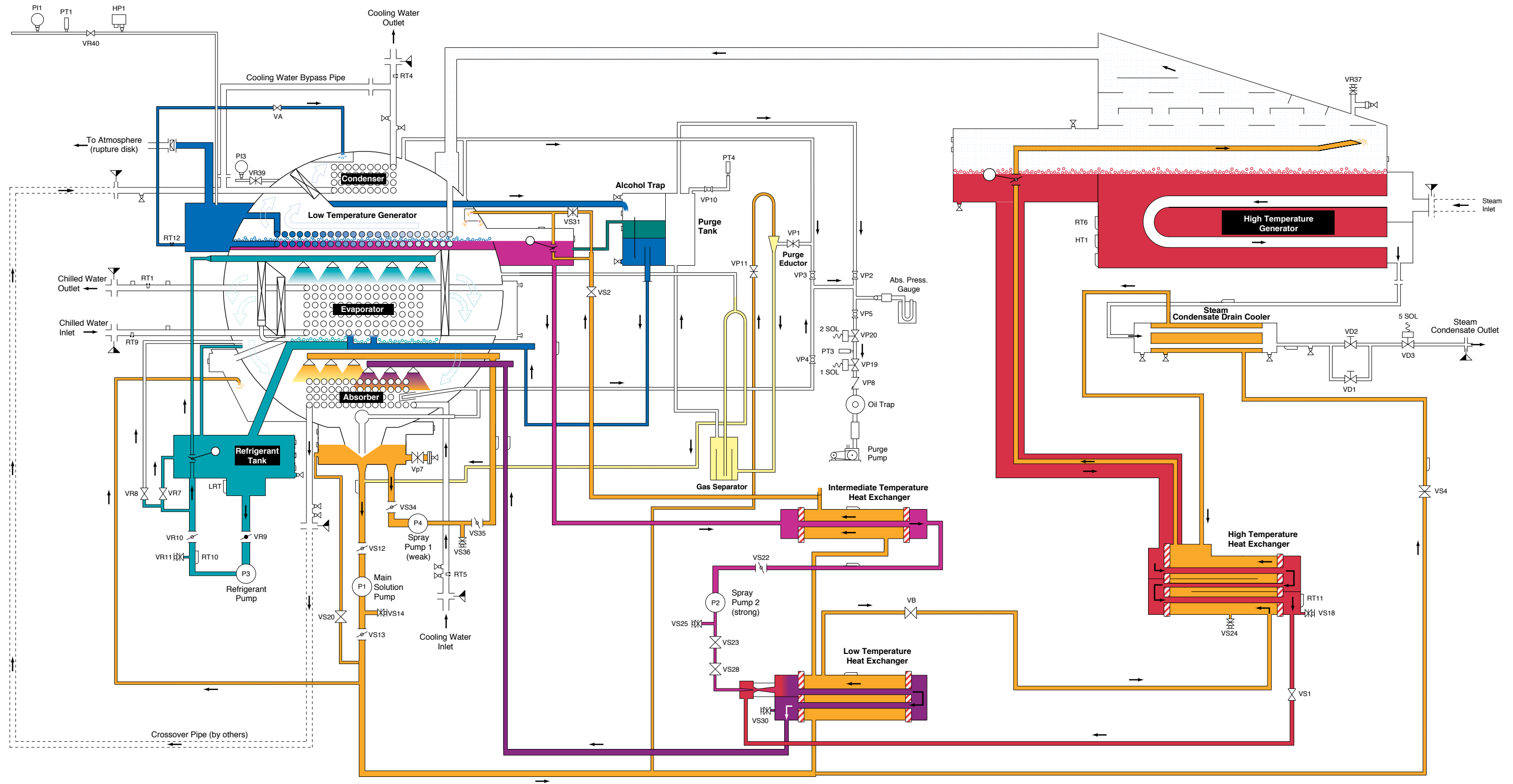
- |  |   |
|--|---|
| Dilute solution from absorber to high, low temperature generators and absorber sprays on cooling water inlet end | Refrigerant liquid (low & intermediate temperature) |
| Intermediate solution to absorber sprays   | Refrigerant liquid (high temperature)               |
| Concentrated solution from low temperature generator   | Refrigerant vapor                                   |
| Concentrated solution from high temperature generator  | Alcohol   |

adn 10/1/95 YPCST18G



NOTE: Some valves may differ between various models

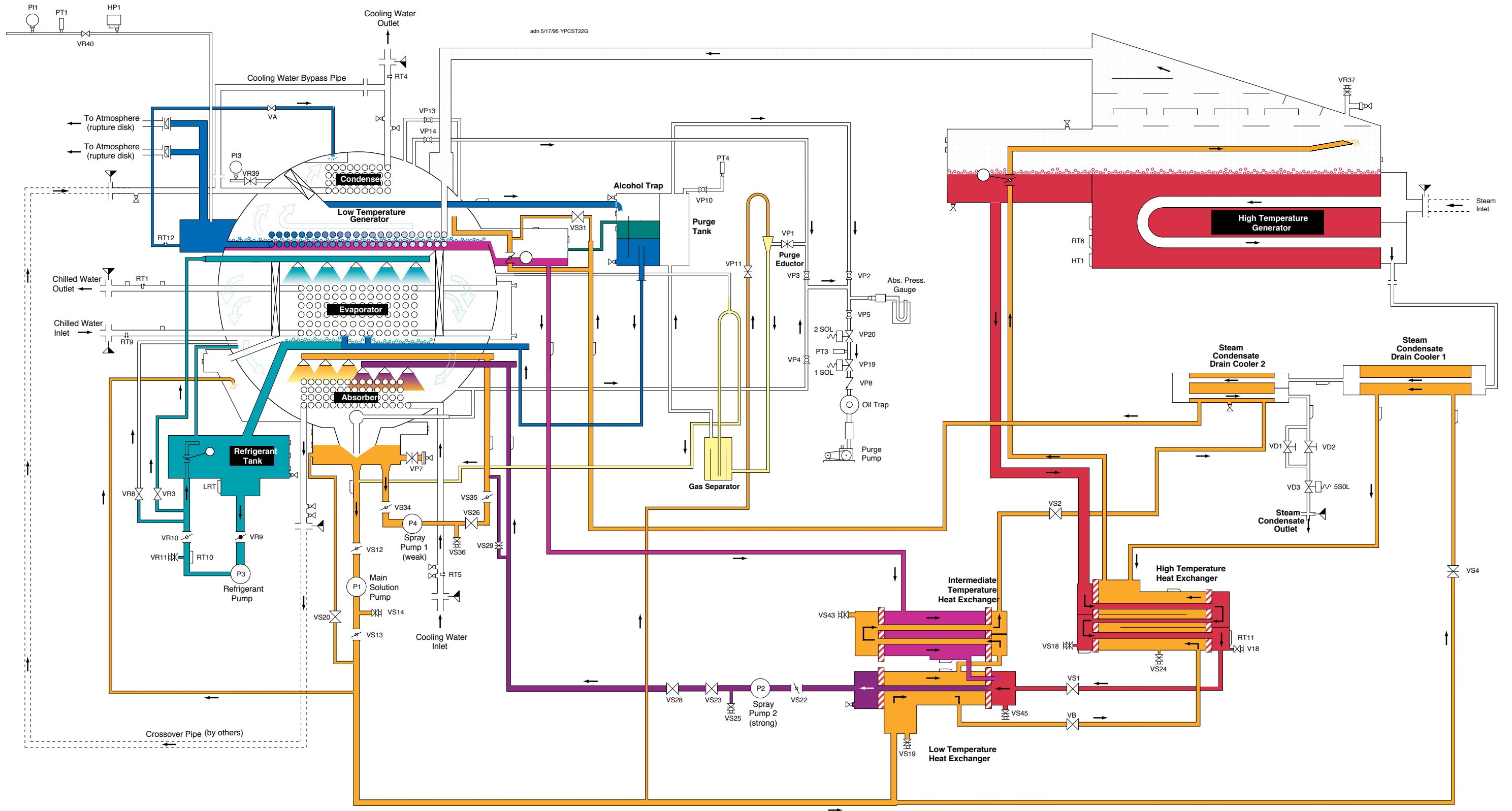
- |  |  |
|--|--|
| <span style="color: orange;">—</span> Dilute solution from absorber to high, low temperature generators and absorber sprays on cooling water inlet end | <span style="color: lightblue;">—</span> Refrigerant liquid (low & intermediate temperature) |
| <span style="color: purple;">—</span> Intermediate solution to absorber sprays   | <span style="color: darkblue;">—</span> Refrigerant liquid (high temperature)                |
| <span style="color: pink;">—</span> Concentrated solution from low temperature generator   | <span style="color: white;">—</span> Refrigerant vapor                                       |
| <span style="color: red;">—</span> Concentrated solution from high temperature generator   | <span style="color: green;">—</span> Alcohol   |



- Dilute solution from absorber to high, low temperature generators and absorber sprays on cooling water inlet end
- Intermediate solution to absorber sprays
- Concentrated solution from low temperature generator
- Concentrated solution from high temperature generator
- Refrigerant liquid (low & intermediate temperature)
- Refrigerant liquid (high temperature)
- Refrigerant vapor
- Alcohol

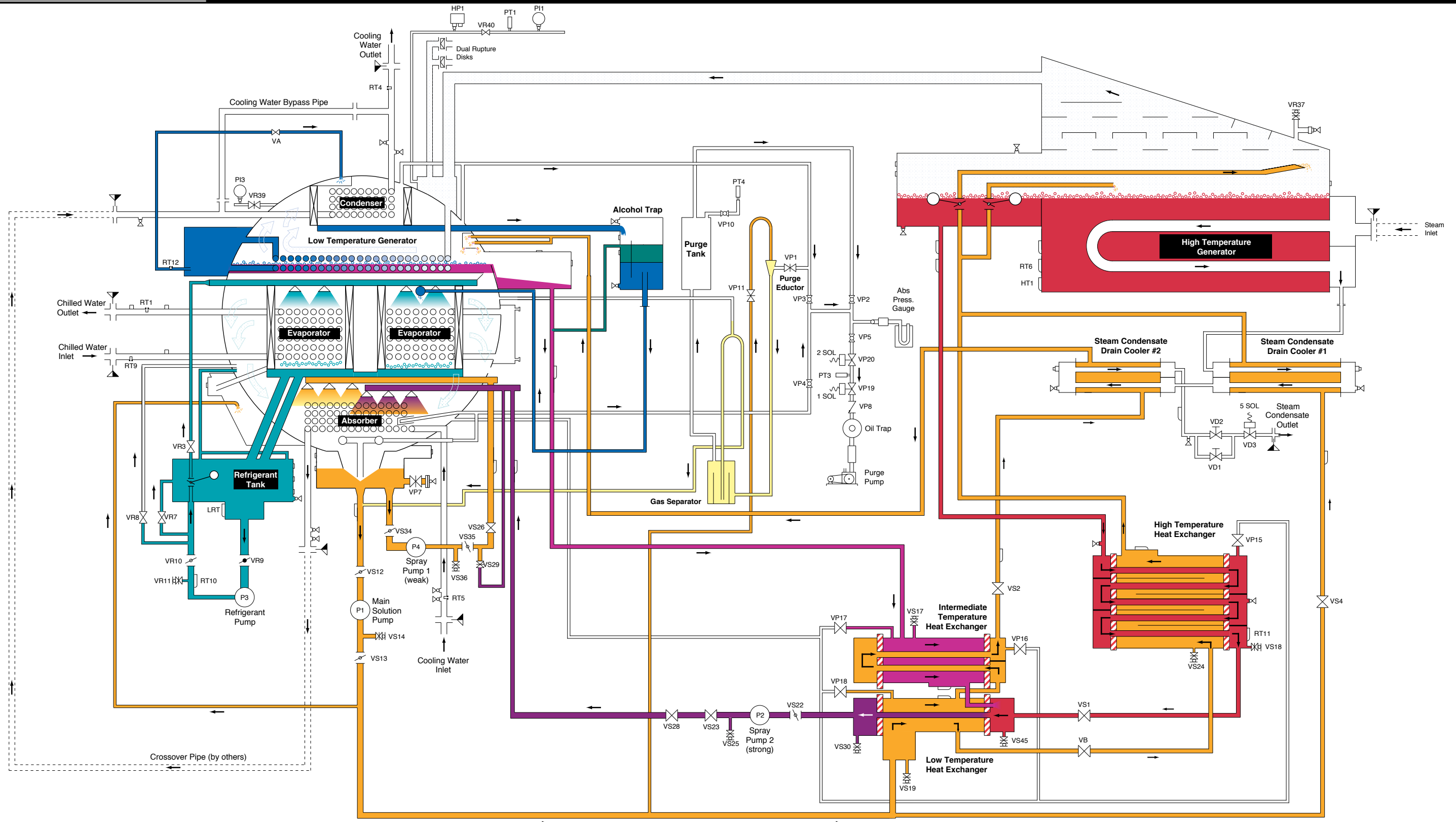
NOTE: Some valves may differ between various models

adn 10/17/95 YPCST20G



NOTE: Some valves may differ between various models

- Dilute solution from absorber to high, low temperature generators and absorber sprays on cooling water inlet end
- Intermediate solution to absorber sprays
- Concentrated solution from low temperature generator
- Concentrated solution from high temperature generator
- Refrigerant liquid (low & intermediate temperature)
- Refrigerant liquid (high temperature)
- Refrigerant vapor
- Alcohol



	Dilute solution from absorber to high, low temperature generators and absorber sprays on cooling water inlet end		Refrigerant liquid (low & intermediate temperature)
	Intermediate solution to absorber sprays		Refrigerant liquid (high temperature)
	Concentrated solution from low temperature generator		Refrigerant vapor
	Concentrated solution from high temperature generator		Alcohol

NOTE: Some valves may differ between various models

adn 10/09/95 YPCST22G