



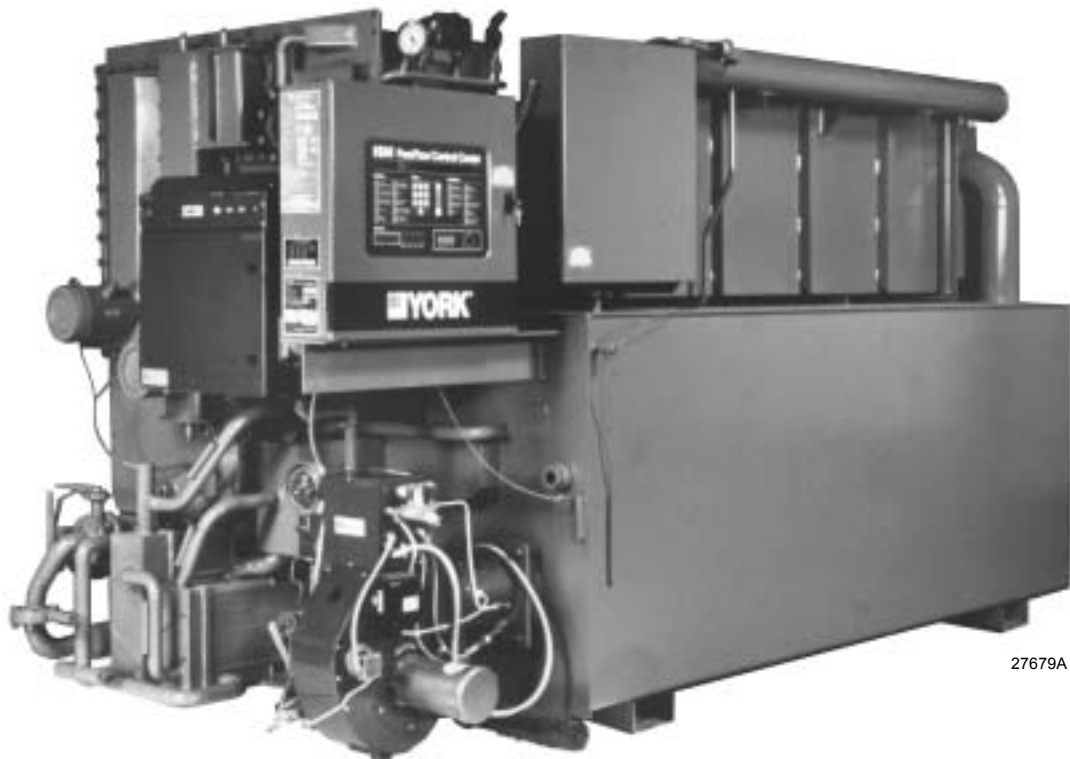
**YPC TWO-STAGE
DIRECT-FIRED AND STEAM-FIRED
ABSORPTION CHILLER-HEATERS**

RENEWAL PARTS

Supersedes: 155.17-RP3 (800)

Form 155.17-RP3 (702)

**MODELS
DIRECT-FIRED
YPC-FA-12SC THRU YPC-FZ-19S
STEAM-FIRED
YPC-ST-14SC THRU YPC-ST-19S**



27679A

(DIRECT-FIRED UNIT SHOWN)

IMPORTANT!

READ BEFORE PROCEEDING!

GENERAL SAFETY GUIDELINES

This equipment is a relatively complicated apparatus. During installation, operation, maintenance or service, individuals may be exposed to certain components or conditions including, but not limited to: refrigerants, oils, materials under pressure, rotating components, and both high and low voltage. Each of these items has the potential, if misused or handled improperly, to cause bodily injury or death. It is the obligation and responsibility of operating/service personnel to identify and recognize these inherent hazards, protect themselves, and proceed safely in completing their tasks. Failure to comply with any of these requirements could result in serious damage to the equipment and the property in which it is situated, as well as severe personal injury or death to themselves and people at the site.

This document is intended for use by owner-authorized operating/service personnel. It is expected that this individual possesses independent training that will enable them to perform their assigned tasks properly and safely. It is essential that, prior to performing any task on this equipment, this individual shall have read and understood this document and any referenced materials. This individual shall also be familiar with and comply with all applicable governmental standards and regulations pertaining to the task in question.

CHANGEABILITY OF THIS DOCUMENT

In complying with YORK's policy for continuous product improvement, the information contained in this document is subject to change without notice. While YORK makes no commitment to update or provide current information automatically to the manual owner, that information, if applicable, can be obtained by contacting the nearest YORK Applied Systems Service office.

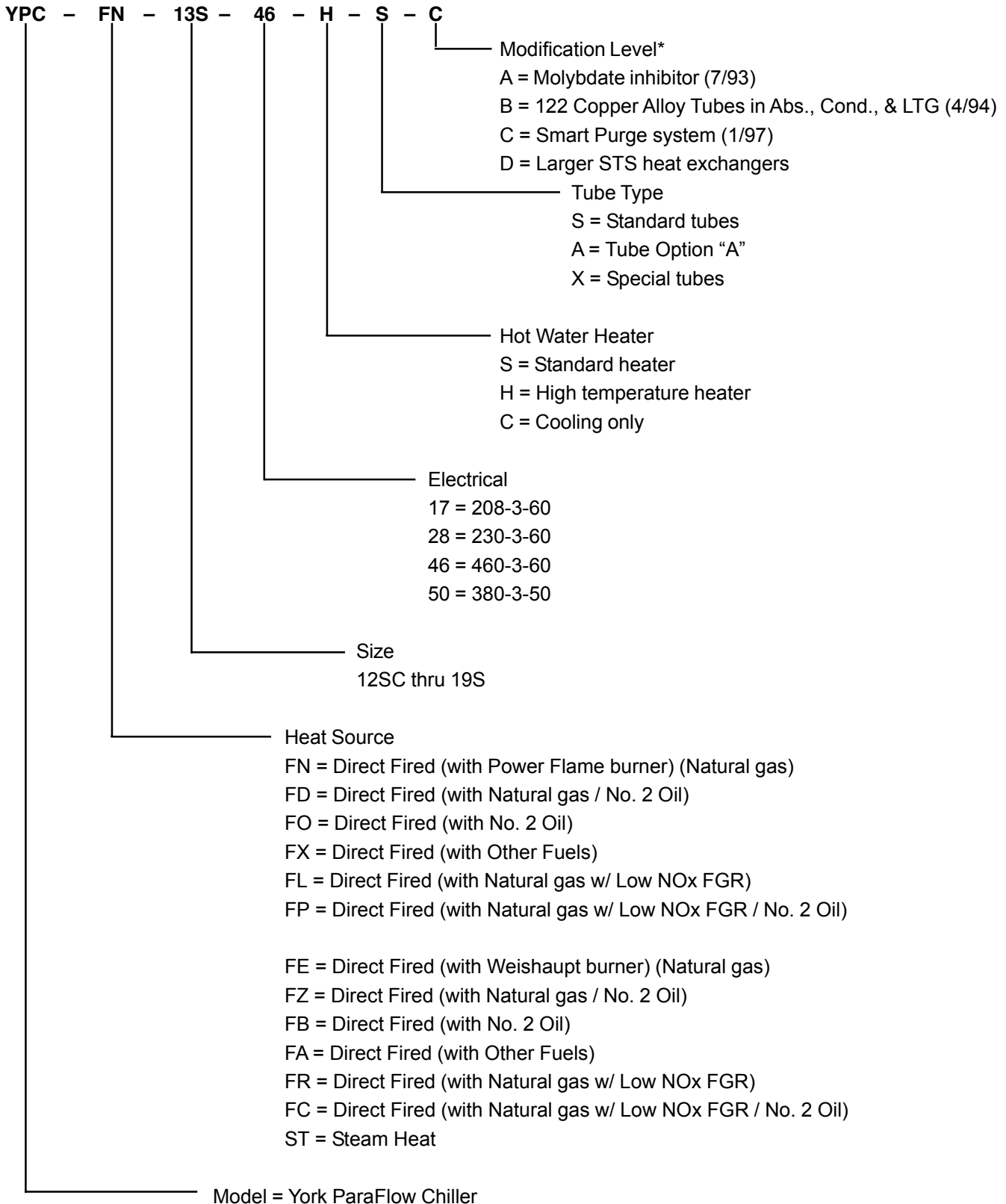
It is the responsibility of operating/service personnel to verify the applicability of these documents to the equipment in question. If there is any question in the mind of operating/service personnel as to the applicability of these documents, then prior to working on the equipment, they should verify with the owner whether the equipment has been modified and if current literature is available.

TABLE OF CONTENTS

MODEL NUMBER NOMENCLATURE	4
MAJOR AND SYSTEM CONTROL COMPONENT LOCATION DIAGRAMS	
direct-fired units	5
steam-fired units	8
MAIN CONTROL PANEL	
Main Control Panel Components	12
Main Control Panel Components (Electrical Connections)	17
Main Control Panel Components (Chinese Language Display Retrofit Kits)	20
POWER PANEL COMPONENTS	
Contactors and Overloads for Purge Pump Motor	21
Contactors and Overloads for Liquid Pumps on Two Pump Units	21
Contactors and Overloads for Liquid Pumps on Three Pump, Direct-Fired Units	23
Contactors and Overloads for Liquid Pumps on Three Pump, Steam-fired Units	25
Non-Fused Disconnect Switches	26
Control Components	26
SYSTEM CONTROL COMPONENTS (LOCATED ON UNIT)	27
VALVES	28
STEAM CONTROL VALVES AND ACTUATORS	30
PUMPS	
Complete Assemblies	31
Pump Repair Kit Contents	32
Pump Repair Kit Part Numbers	34
Purge Vacuum Pumps and Parts	38
TUBES	40
CONDENSATE DRAIN COOLERS	41
CHEMICALS AND COMPOUNDS	42
SERVICE TOOLS AND APPARATUS	43
Globe Valve Teflon Cap O-Rings McMaster-Carr	44
GASKETS	
System Gaskets	45
Water Boxes	46
RUPTURE DISKS AND HOLDERS	48
MISCELLANEOUS COMPONENTS	49
FLOAT VALVES	49
SPARE AND EMERGENCY PARTS	
Recommended Spare Parts (Preventive, Regular and Scheduled Maintenance Spare Parts)	50
Emergency Spare Parts	51
SHIP LOOSE UNIT PARTS	
Unit Ship Loose Parts for 50hz & 60hz Direct-Fired Units	52
Typical Burner Ship Loose Items	53
YORK Vacuum Pump Ship Loose Parts	53
Unit Ship Loose Parts for 50hz & 60hz Steam-Fired Units with Mercury Manometer	54
Unit Ship Loose Parts for 50hz & 60hz Steam-Fired Units, Non-mercury Manometer	55

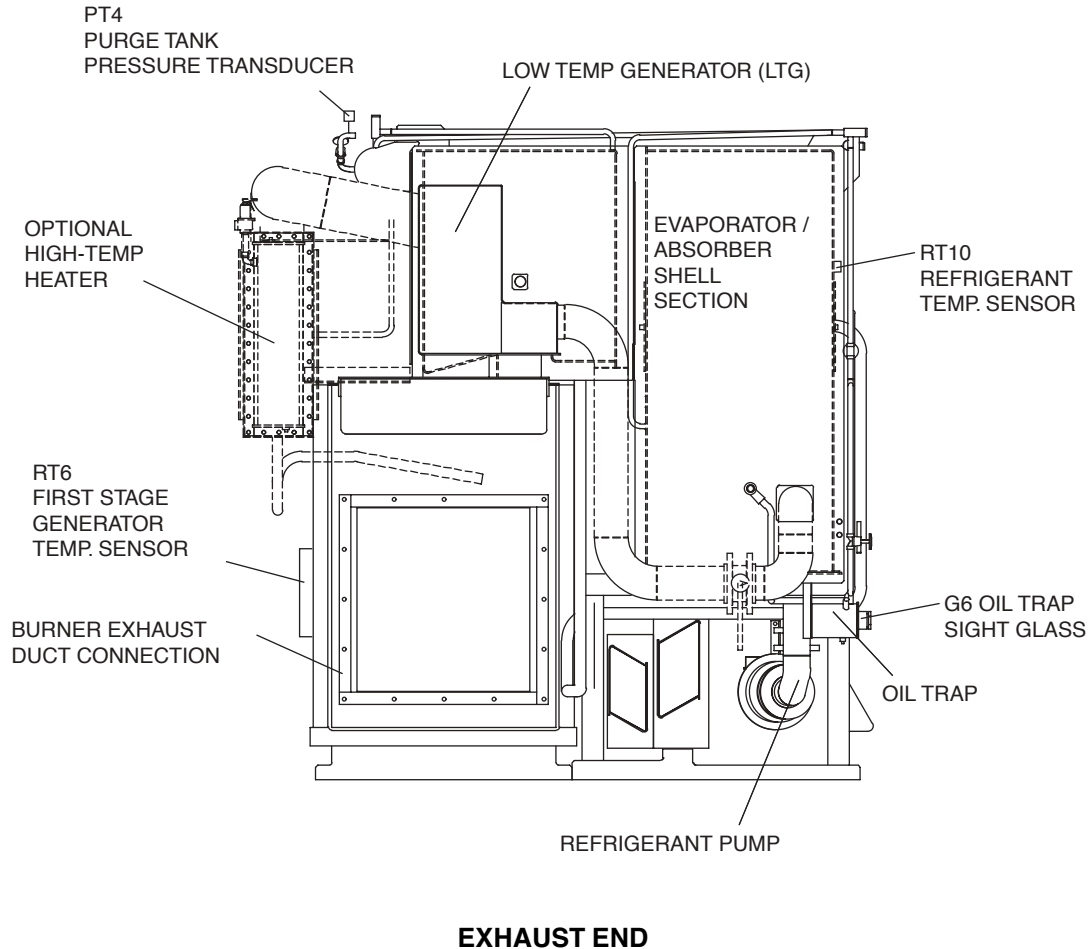
NOMENCLATURE

The model number denotes the following characteristics of the unit:



* Modification "B" contains Modification "A"
 Modification "C" contains Modifications "A" and "B"

MAJOR AND SYSTEM CONTROL COMPONENT LOCATION FOR DIRECT-FIRED UNITS

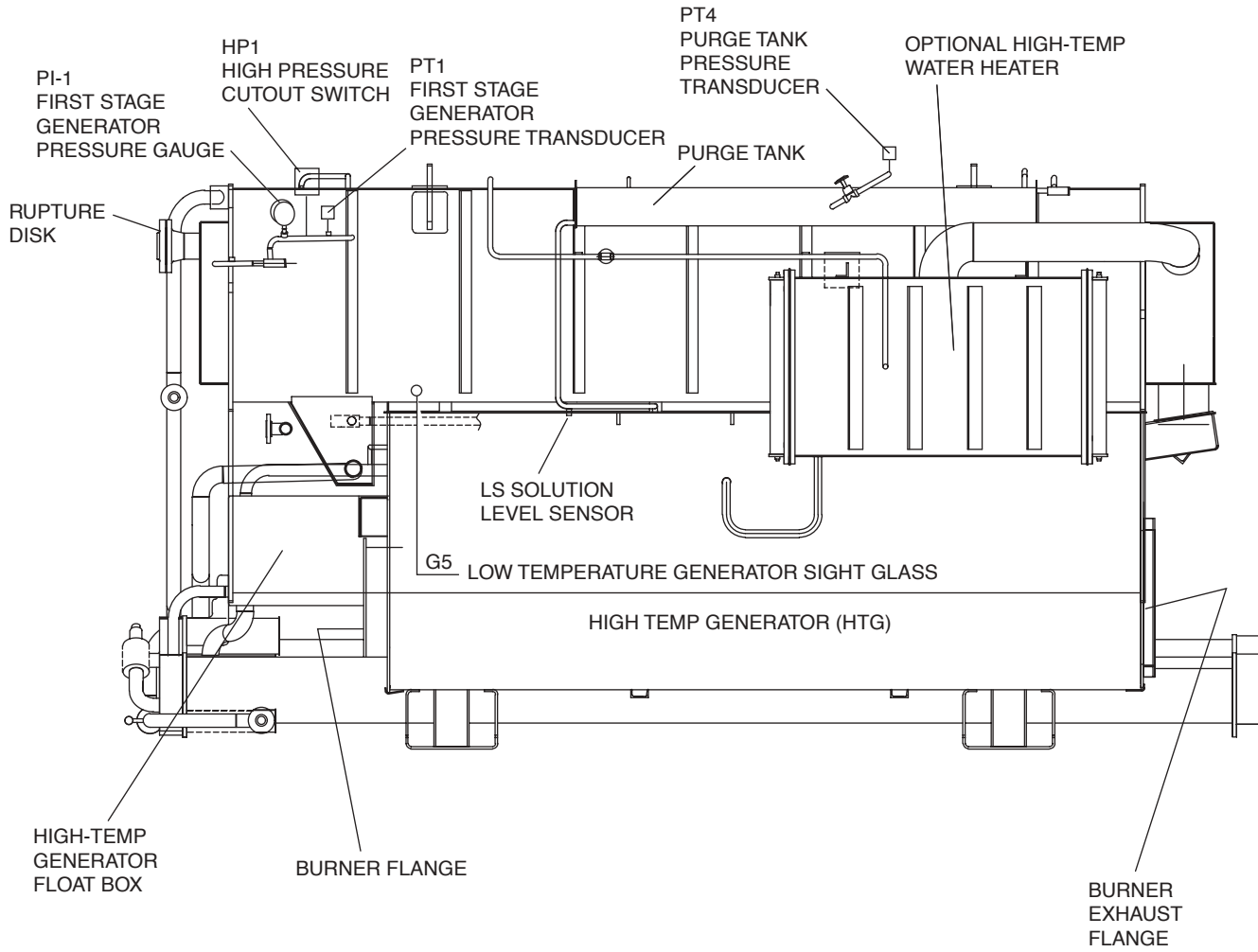


LD06081

NOTES FOR ALL DIRECT-FIRED DIAGRAMS:

- Not all system components are shown on any one diagram.
- The following system controls are located on the side of the unit Power Panel:
 - LS – Low Solution Level Cutout Switch
 - HT1 – First-Stage Generator High Temperature Cutout Control
- The following sensors are located on unit waterbox nozzles and are not shown:
 - RT1 – Leaving Chilled Water Temperature Sensor
 - RT2 – Leaving Hot Water Temp. Sensor (only on units with optional Hi-Temp Heater)
 - RT3 – Entering Hot Water Temp. Sensor (only on units with optional Hi-Temp Heater)
 - RT4 – Leaving Condenser Water Temperature Sensor
 - RT5 – Entering Absorber Water Temp. Sensor
 - RT9 – Entering Chilled Water Temp. Sensor

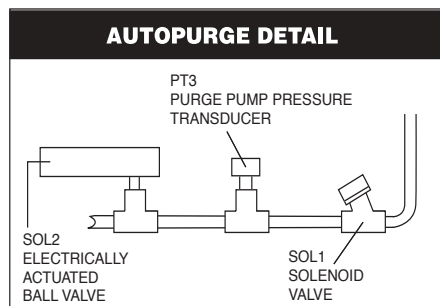
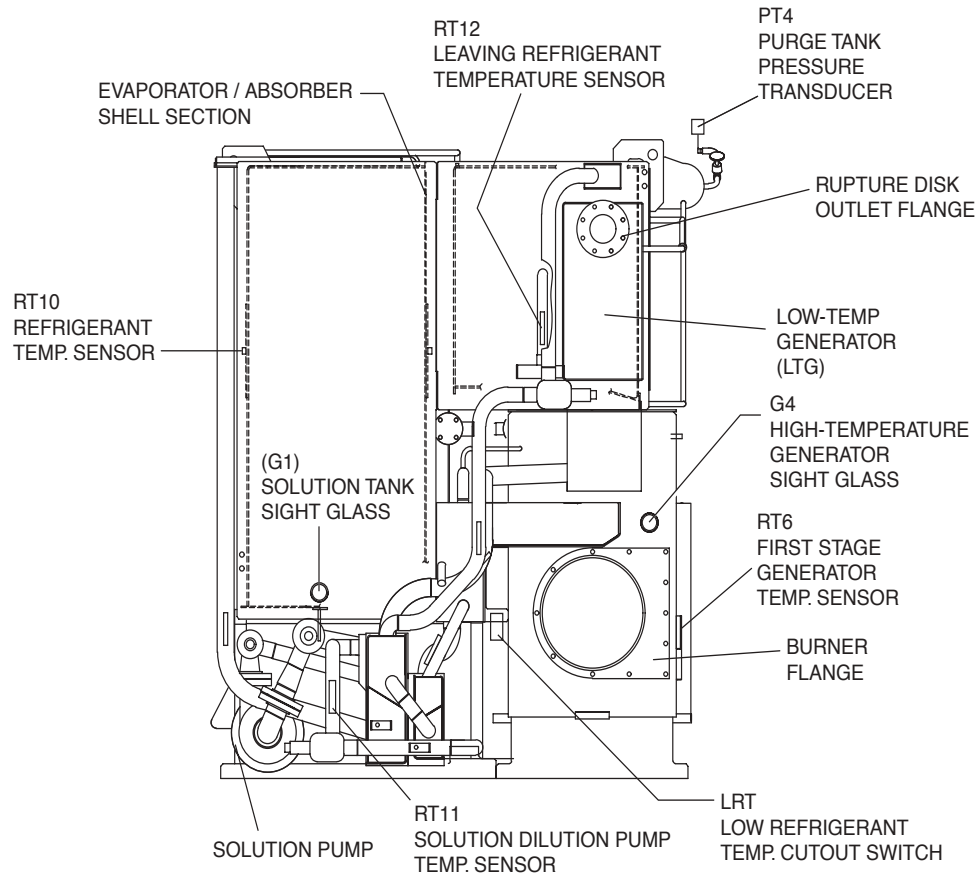
MAJOR AND SYSTEM CONTROL COMPONENT LOCATION FOR DIRECT-FIRED UNITS



PANEL SIDE

LD06082

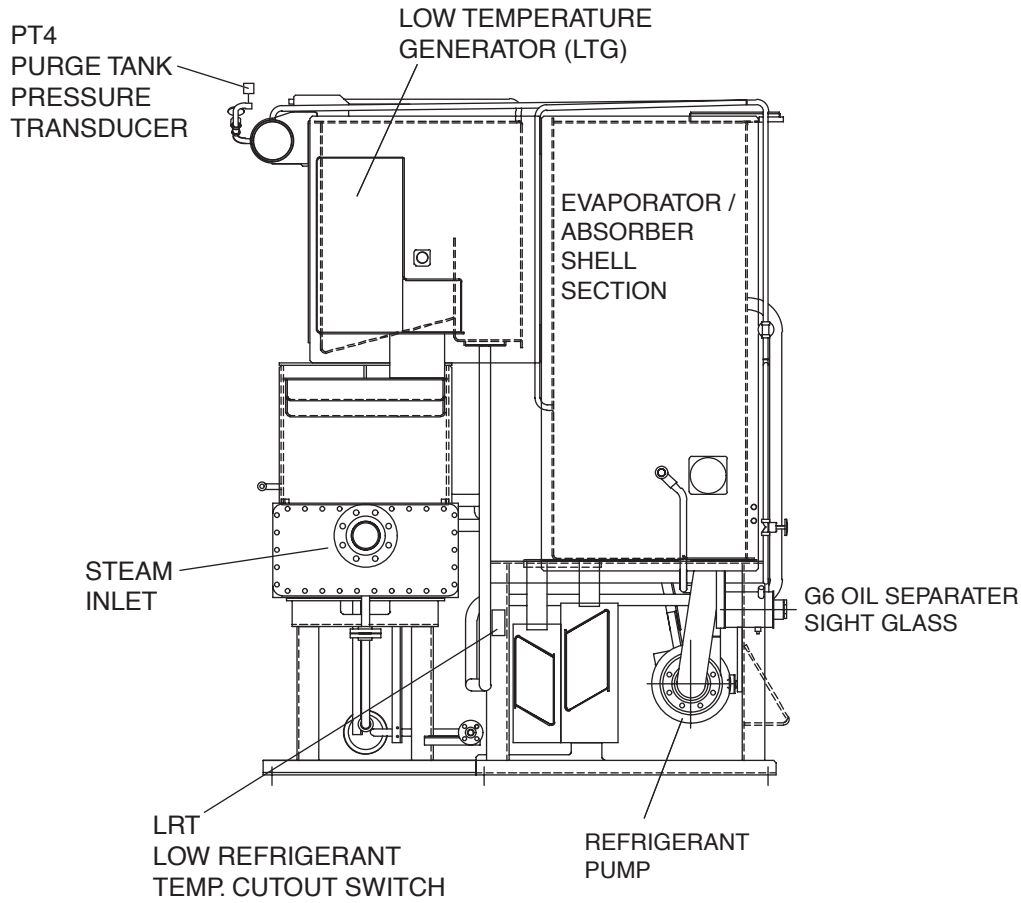
MAJOR AND SYSTEM CONTROL COMPONENT LOCATION FOR DIRECT-FIRED UNITS



LD06083

BURNER END

MAJOR AND SYSTEM CONTROL COMPONENT LOCATION FOR STEAM-FIRED UNITS



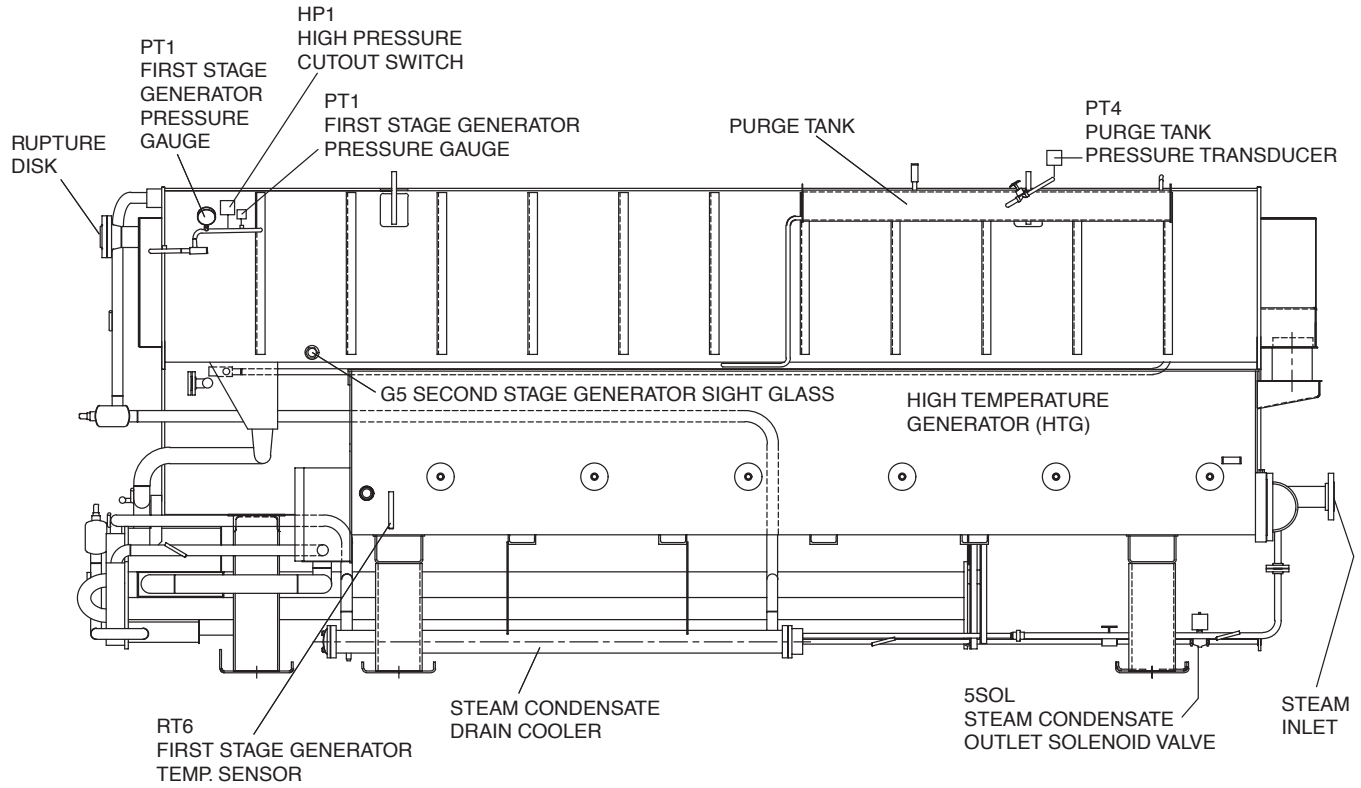
LD06084

STEAM INLET END

NOTES FOR ALL STEAM-FIRED UNITS:

1. Not all system components are shown on any one diagram.
2. The following system control is located on the side of the unit Power Panel:
HT1 – First-Stage Generator High Temperature Cutout Control
3. The following sensors are located on unit waterbox nozzles and are not shown:
RT1 – Leaving Chilled Water Temperature Sensor
RT4 – Leaving Condenser Water Temperature Sensor
RT5 – Entering Absorber Water Temp. Sensor
RT9 – Entering Chilled Water Temp. Sensor

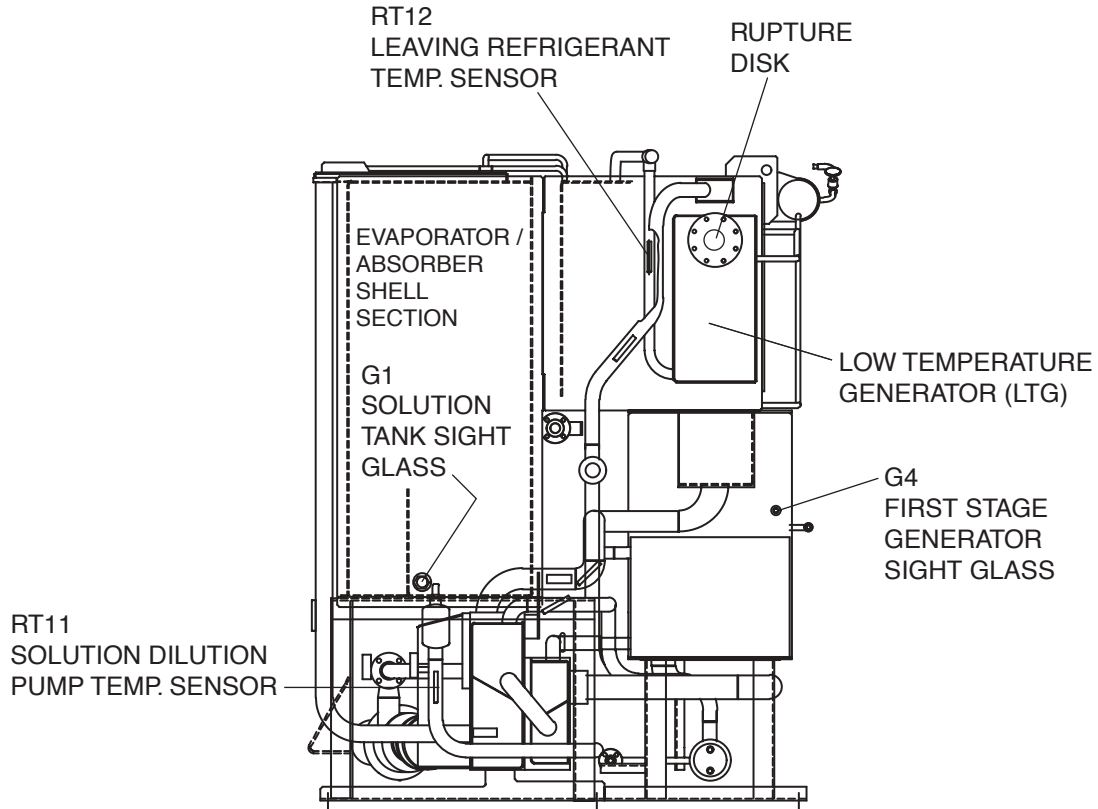
MAJOR AND SYSTEM CONTROL COMPONENT LOCATION FOR STEAM-FIRED UNITS



LD06085

PANEL SIDE

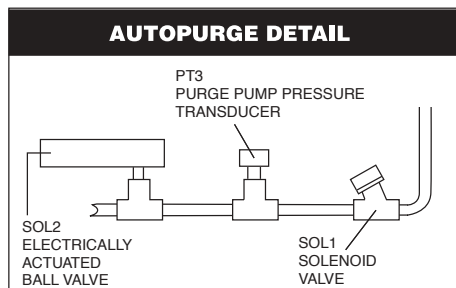
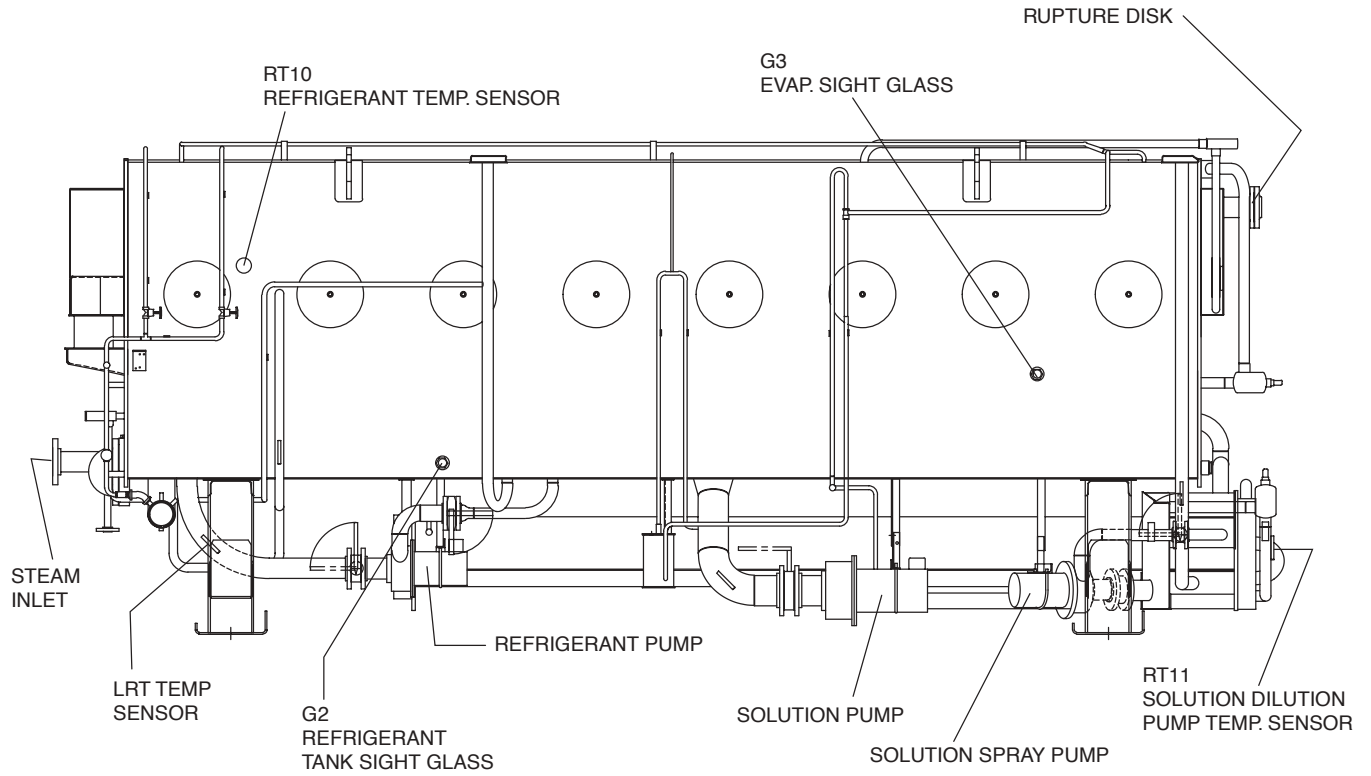
MAJOR AND SYSTEM CONTROL COMPONENT LOCATION FOR STEAM-FIRED UNITS



LD06086

OPPOSITE END

MAJOR AND SYSTEM CONTROL COMPONENT LOCATION FOR STEAM-FIRED UNITS



LD06087

OPPOSITE PANEL SIDE

MAIN CONTROL PANEL

ITEM	DESCRIPTION	FIG. NO.	QTY.	PART NO.
1	MICRO PANEL ENCLOSURE AND DOOR	1, 2, 3	1	371-01288-301
4	RELAY (1R)	1	1	024-23962-000
5	TRANSFORMER (1T)	1	1	025-27911-000
6	FUSE, 7 AMP (1FU)	1	1	025-29905-000
9	CONTROL, I/O EXPANSION BOARD	2	1	031-01301-001
10	CONTROL, POWER SUPPLY BOARD	2	1	031-01080-000
12	CABLE, RIBBON - I/O EXPANSION BOARD J9 & J10	2	2	031-01322-000
13	FASTENER, PAWL, ADJUSTABLE	3	1	021-17252-000
14	CLAMP, RIBBON WIRE	1	1	025-29103-000
15	STRAP, CABLE	1	2	025-11098-000
16	STRAP, CABLE	2	1	025-09607-000
17	DISPLAY, PANEL	3	1	031-00775-001
18	SWITCH, ROCKER	3	1	024-23143-000
19	CLAMP, RIBBON WIRE	1	11	025-25156-000
20	MOUNT, CABLE STRAP	3	5	025-25155-000
22	LABEL, IDENTIFICATION	3	1	035-07878-000
23	LABEL, CAUTION	3	1	035-03908-000
24	LABEL, CAUTION	3	1	035-05548-000
25	LABEL, NOTICE	3	1	035-05973-000
26	LABEL, CAUTION	3	1	035-07425-000
27	STRIP, MARKER	2	1	025-29933-000
28	STRIP, MARKER	2	1	025-29911-000
29	CABLE, RIBBON - RELAY BOARD J3	1, 2	1	031-01323-000
30	CABLE, RIBBON - KEYPAD	1, 2, 3	1	031-00950-000
31	CABLE, RIBBON - RELAY BOARD J1	1, 2	1	031-00951-000
32	CABLE, RIBBON - DISPLAY	1, 2, 3	1	031-00952-000
33	CABLE, RIBBON - DIGITAL INPUT BOARD J1	1	1	031-00953-000
34	CABLE, RIBBON - MICRO BOARD J2	2	1	031-01321-000
35	NAMEPLATE, PATENT	3	1	029-20119-000
37	TERMINAL BLOCK	2	17	025-20944-000
38	TERMINAL BLOCK	2	14	025-20945-000
39	TERMINAL BLOCK END	2	2	025-20946-000
40	SPACER, #8-32 X 3-3/4 LONG	1, 2	4	021-17256-000
42	SPACER, #6-32 X 3/4 LONG	3	4	021-17259-000
43	NUT, EXPANSION	1, 2	30	021-14661-000
50	SCREW, #6-32 X 3/4 LONG	3	4	021-03739-000
51	SPACER, RAF 1127-6-N-O	3	4	021-17776-000
52	SPACER, CABLE	1, 2, 3	10	025-18167-000
53	WASHER, CUP	2	16	021-14191-000
54	SCREW, TAP, TYPE F HEX HEAD, #10-32 X 3/8 LONG	2	17	021-17608-000
56	SCREW, MACHINE #10-24 X 3/8 LONG	2, 3	6	021-03745-000
57	SCREW, TAP TYPE B PAN HEAD, #10 X 1/2 LONG	1, 2	18	021-13789-000
58	SCREW, TAP, TYPE B PAN HEAD, #8 X 1-1/4 LONG	2	30	021-14667-000

MAIN CONTROL PANEL (CONT'D)

ITEM	DESCRIPTION	FIG. NO.	QTY.	PART NO.
60	SCREW, TAP TYPE B PAN HEAD, #8 X 3/8 LONG	1, 2	16	021-13783-000
61	SCREW, TAP CUT TYPE F, #6 X 1/2 LONG	2	6	021-13721-000
62	SCREW, MACH. HEAD RECESSED ROUND HEAD, #8-32 X 1/2 LONG	1	4	021-01722-000
63	SCREW, MACH. HEAD RECESSED ROUND HEAD, #6-32 X 3/8 LONG	3	4	021-01692-000
64	NUT/WASHER (KEPS), #10-24	1, 2, 3	11	021-18024-000
65	LOCKWASHER, INTERNAL TOOTH, #6	3	8	021-01132-000
66	LOCKWASHER, #10	3	2	021-01137-000
67	LOCKWASHER, #8	1	4	021-01133-000
68	WASHER, PLAIN, #6	2	2	021-11641-000
69	NUT/WASHER (KEPS) #8-32	1	4	021-17664-000
72	WIRING HARNESS, MAIN	1	1	571-01288-201
73	WIRING HARNESS, CARD CAGE	1	1	571-01111-001
75	WIRING HARNESS, DOOR	3	1	571-01288-211
77	SCREW/WASHER (SEMS)	2	4	021-17268-000
78	SUPPRESSOR (NOTE 1)	2	1	031-00808-000
80	INSULATOR, DISPLAY	3	1	071-01113-000
82	SCREW, RECESSED PAN HEAD, 1/4-20 X 3/4 LONG	2	1	021-03748-000
83	NUT HEX, 1/4-20	2	1	021-00451-000
84	LOCKWASHER, INTERNAL LOCK TOOTH, 1/4	2	1	021-01148-000
85	CONTROL MICRO BOARD, 2MEG (NOTE 2)	2	1	031-01065-002
104	CONTROL RELAY BOARD	2	1	031-01199-000
105	LABEL, FUSE	2	1	025-29931-000
107	FUSE HOLDER	1	1	025-13991-000
108	SCREW, SERRATED HEAD, #10 X 1/2 LONG	2	4	021-14786-000
151	EPROM, PROGRAMMED, 2 MEG (NOTE 4)	2	1	See Chart, Note 4
152	KEYPAD	3	1	024-25570-000
154	CONTROL, DIGITAL INPUT BOARD (STANDARD)	2	1	031-01621-001
154	CONTROL, DIGITAL INPUT BOARD (VDE)	2	1	031-01621-002
155	JUMPER, TERMINAL BLOCK	2	3	025-13984-000
156	IC, REAL TIME CLOCK - U16	—	1	031-00955-000
157	CONTROL, REMOTE RESET (CUSTOMER OPTION)	—	NOTE 3	031-00814-000
158	CARD FILE (CUSTOMER OPTION)	—	1	031-00827-000
159	MOV 115 VOLTS APPLICATIONS	—	NOTE 5	331-00485-000

NOTES:

- In addition to this suppressor, not shown are six additional suppressors of the same part number, shipped loose for field use to place across the coil of any relay or contactor connected to the control panel or its 115 VAC power supply, including the application of:
Alarm Circuit Relays
Pump Starter (contactor)
Flow Switch Inputs
BAS Inputs
- Replacement Micro Boards are supplied without Eprom. Remove Eprom from defective board and use in replacement board. See item #13 if Eprom must also be replaced.
- If it is desired to remotely reset both the leaving water temperature setpoint (gas/oil or steam) and the load limit setpoint (steam units only), 2 each remote reset boards are required. Otherwise, only 1 each is required.
- Older units (built prior to April 1997) use a 1 MEG Micro Board, P/N 031-01065-000 or -001. This Micro Board is compatible with only a 1 MEG EPROM (Version A.01F.12.133.00), YORK P/N 031-01669-002.

IF MICROPANEL CONTAINS MICROBOARD P/N	USE EPROM P/N	EPROM VERSION	EPROM CHECKSUM	MEGS
031-01065-000	031-01669-002	A.01F.12.133.00	AEE9	1
031-01065-001	031-01669-002	A.01F.12.133.00	AEE9	1
031-01065-002	031-02069-001	A.01F.13	C0AF	2

- Part no. consists of: 1-(031-00266-000) MOV and 2-(025-11190-000) straight - Push on spade terminals.

LD03289

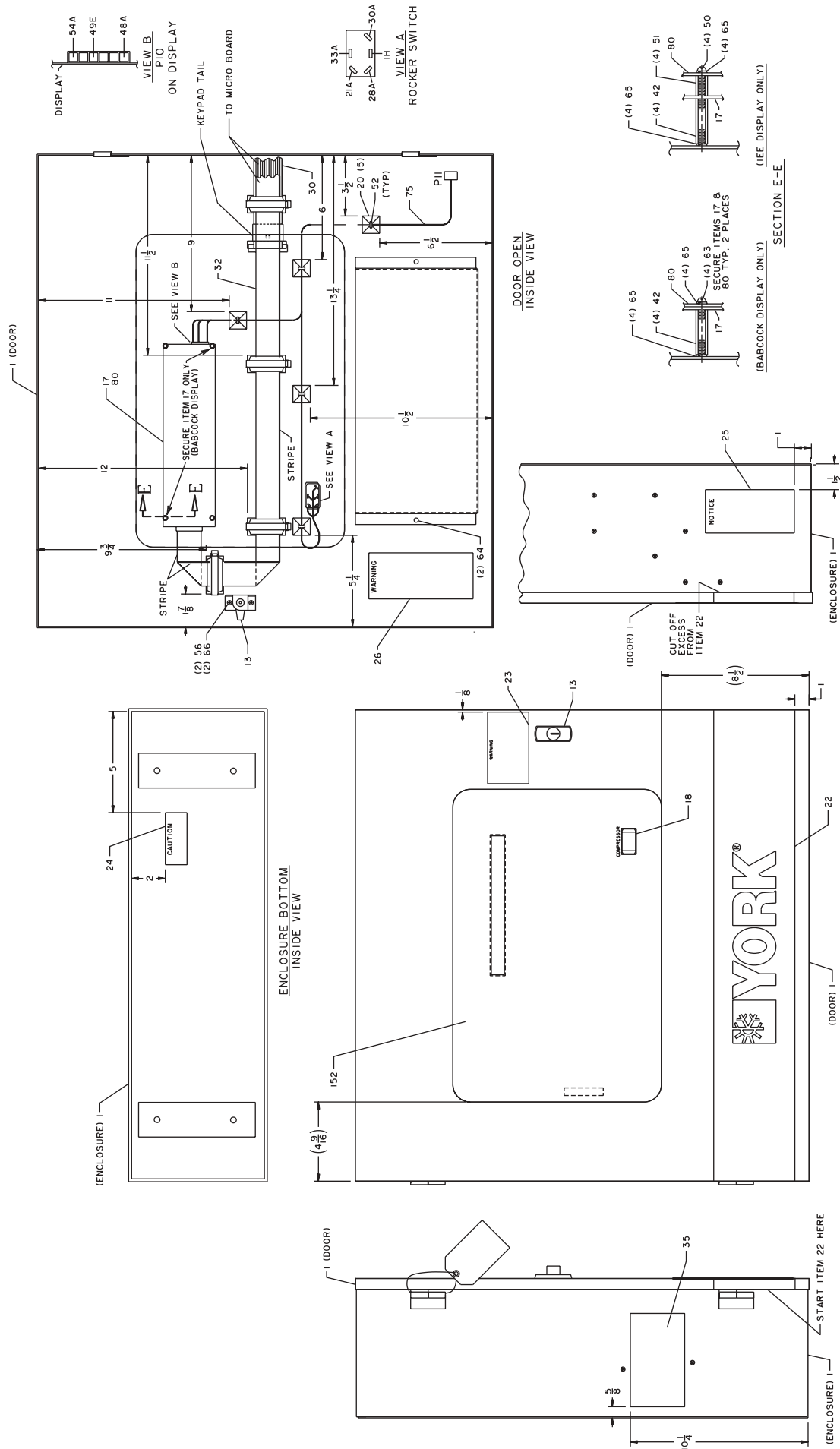


FIG. 3 -

MAIN CONTROL PANEL (CONT'D) ELECTRICAL CONNECTIONS

APPLICATION	POSITION	PINS	PLUG PART NO.	PIN PART NO.
MicroBoard	J3	2	025-21136-000	025-19674-000
MicroBoard	J8	4	025-21138-000	025-19674-000
MicroBoard	J17	15	025-28385-000	025-28386-000
MicroBoard	J19	12	025-28384-000	025-28386-000
MicroBoard	J21	9	025-28383-000	025-28386-000
MicroBoard	J22	6	025-28382-000	025-28386-000
I/O Expansion Board	J1	2	025-29130-000	025-28386-000
I/O Expansion Board	J3	2	025-29130-000	025-28386-000
I/O Expansion Board	J4	6	025-28382-000	025-28386-000
I/O Expansion Board	J5	4	025-28959-000	025-28386-000
I/O Expansion Board	J6	3	025-29185-000	025-28386-000
I/O Expansion Board	J7	2	025-21136-000	025-19674-000
I/O Expansion Board	J8	6	025-28382-000	025-28386-000
Power Supply Board	J1	3	025-21137-000	025-32506-000
Power Supply Board	J2	4	025-21138-000	025-19674-000
Power Supply Board	J3	2	025-21136-000	025-32506-000
Power Supply Board	J4	3	025-21137-000	025-19674-000
Power Supply Board	J6	2	025-29130-000	025-28386-000
Digital Board	J2	3	025-21137-000	025-19674-000
Relay Board	J2	2	025-21136-000	025-19674-000

DANGLING CONNECTER (connects door harness with main panel harness)

Application	Position	Pins	Description	Part No.
MicroPanel	Door	9	Connector	025-21192-000
MicroPanel	Door	9	Pin	025-22214-000
MicroPanel	Door	9	Mate	025-21191-000
MicroPanel	Door	9	Socket	025-22215-000
Insulated Spring Spade Terminal for Shielded Cable Drain Wire Connection to Panel				025-19407-000
Un-Insulated, Straight Push-On Connection Terminal with Insulation Support Clamp				025-06874-000

UNIT THERMISTORS AND PRESSURE TRANSDUCER CONNECTIONS

Application	Item No.	Description	Part No.
Shielded Cable, Sensor End	1	Two-Pin Housing (plug) (for Thermistor Connection)	025-28951-000
Shielded Cable, Sensor End	2	Three-Pin Housing (plug) (for Pressure Transducer)	025-28954-000
Shielded Cable, Sensor End	3	Rubber Collars to fit over wire insulation	025-28950-000
Shielded Cable, Sensor End	4	Contact Female Receptacles (metal female terminals)	025-28952-000
Thermistor (Pig-Tail)	5	Two-Pin Housing (cap) for sensor end (supplied with thermistor)	025-28948-000
Thermistor (Pig-Tail)	3	Rubber Collars to fit over wire insulation (supplied with thermistor)	025-28950-000
Thermistor (Pig-Tail)	6	Contact (male) Tabs (metal terminals) (supplied with thermistor)	025-28949-000
Transducer (Pig-Tail)	7	Three-Pin Housing (cap) for transducer (supplied with transducer) (old style)	025-28953-000
Transducer (Pig-Tail)	3	Rubber collars to fit over wire insulation (supplied with transducer)	025-28950-000
Transducer (Pig-Tail)	8	Contact (male) Tabs (metal terminals) (supplied with transducer) (old style)	025-28949-000
Unit Wiring	9	Cable, 3-Conductor Cable with Foil Shield & Drain Wire 20AWG (for Pressure Transducers)	025-28701-003
Unit Wiring	10	Cable, 2-Conductor Cable with Foil Shield & Drain Wire 20AWG (for Thermistor)	025-28701-002

SEE FIG. 4, PAGE 19

MAIN CONTROL PANEL (CONT'D)

ELECTRICAL CONNECTIONS – ILLUSTRATIONS

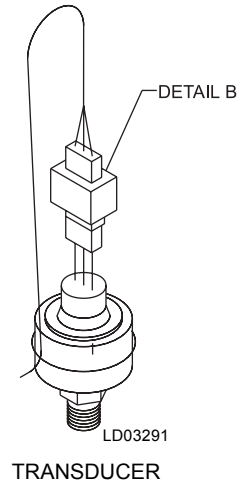
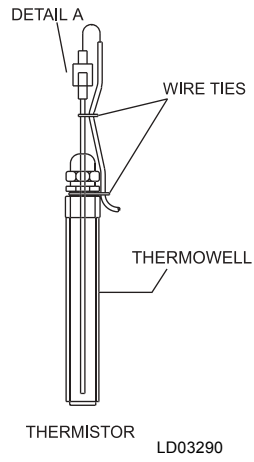
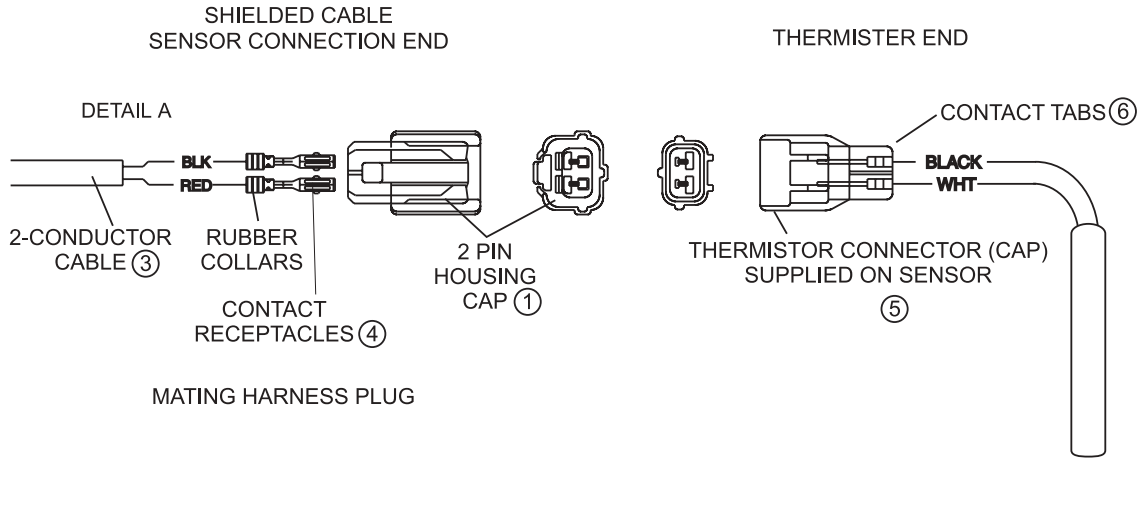
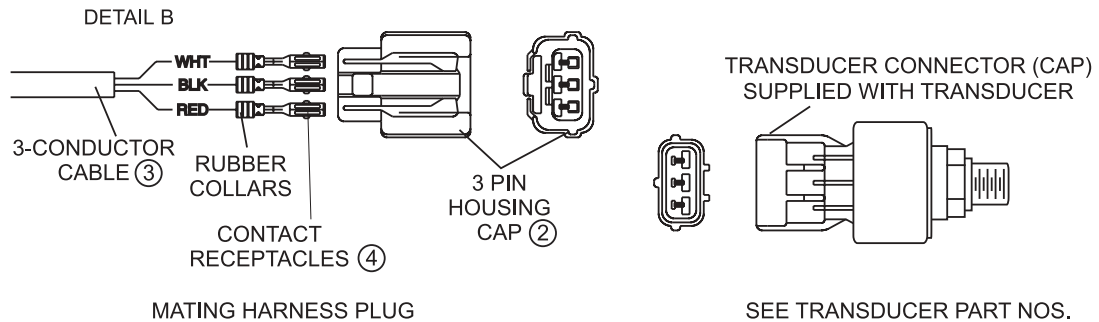


FIG. 4 – ELECTRICAL CONNECTIONS

THERMISTOR CONNECTIONS



TRANSDUCER CONNECTIONS



SEE TABLE ON PAGE 17

LD03292

ITEM	YORK P/N
1	025-28951-000
2	025-28954-000
3	025-28950-000
4	025-28952-000
5	025-28948-000
6	025-28949-000

MAIN CONTROL PANEL (CONT'D)

CHINESE LANGUAGE DISPLAY RETROFIT KITS

DESCRIPTION	QTY.	PART NUMBER
EPROM, SIMPLIFIED CHINESE, LOCATION U13	1	031-01768-001
EPROM, SIMPLIFIED CHINESE, LOCATION U14	1	031-01768-002
EPROM, TRADITIONAL CHINESE, LOCATION U13	1	031-01768-003
EPROM, TRADITIONAL CHINESE, LOCATION U14	1	031-01768-004
PRINTED CIRCUIT BOARD, CHINESE LANGUAGE DISPLAY	1	031-01616-000
DISPLAY, LCD GRAPHIC, CHINESE LANGUAGE	1	031-01653-000
TRANSFORMER, 115VAC/24VAC, CHINESE DISPLAY	1	025-27911-000
CABLE, RIBBON-MICRO BOARD J6 TO CHINESE DISPLAY PC BOARD J1	1	031-01647-000
CABLE, RIBBON, CHINESE DISPLAY PC BOARD J2 TO VACUUM FLUORESCENT DISPLAY J2	1	031-01646-000
CABLE, RIBBON, CHINESE DISPLAY PC BOARD J3 TO CHINESE LCD DISPLAY	1	031-01645-000
KEYPAD, ENGLISH & SIMPLIFIED CHINESE LABELING	1	024-27808-000
KEYPAD, ENGLISH & TRADITIONAL CHINESE LABELING	1	024-27807-000
KIT, RETROFIT, SIMPLIFIED CHINESE LANGUAGE DISPLAY	1	371-02401-002*
KIT, RETROFIT, TRADITIONAL CHINESE LANGUAGE DISPLAY	1	371-02401-003*

NOTES:

* Chinese Language Display Retrofit Kits consist of the following components mounted on a Control Panel door:

1. Kit, Retrofit, Simplified Chinese Language display 371-02401-002 contains 024-27808-000 Keypad.
Kit, Retrofit, Traditional Chinese Language display 371-02401-003 contains 024-27807-000.
2. Switch, Rocker 024-23143-000.
3. Fastener, pawl adjust 021-17252-000.
4. Ribbon Cables; 031-00950-000, 031-01647-000, 031-01646-000, and 031-01645-000.
5. All door decals.
6. Display, vacuum florescent 031-00775-001.
7. Display, Chinese Language LCD (031-01653-000) mounted on a printed circuit board (031-01616-000) that is equipped with either Simplified Chinese translation Eproms 031-01768-001 (U13) and 031-01768-002 (U14) supplied in kit 371-02401-002; or Traditional Chinese translation Eproms 031-01768-003 (U13) and 031-01768-004 (U14) supplied in kit 371-02401-003.
8. Transformer, 115 VAC/ 24 VAC 025-27911-000.
9. Installation instructions.

POWER PANEL COMPONENTS CONTACTORS AND OVERLOADS FOR PURGE PUMP MOTOR

DESCRIPTION	VOLT CODE	CONTACTOR/ OVERLOAD	MODEL UNITS		
			DIRECT FIRED UNITS		STEAM UNITS
			ALL MODELS	14SC & 15S	16SL THRU 19S
PURGE PUMP MOTOR CONTACTOR (3M)	ALL	CONTACTOR	024-25522-000	024-25522-000	024-25522-000
PURGE PUMP MOTOR OVERLOAD (3OL)	17	OVERLOAD	024-25576-000	024-25576-000	024-25576-000
	28	OVERLOAD	024-25576-000	024-27278-000	024-25576-000
	46	OVERLOAD	024-26186-000	024-27277-000	024-26186-000
	50	OVERLOAD	024-26186-000	024-27278-000	024-26186-000

CONTACTORS AND OVERLOADS FOR LIQUID PUMP ON TWO PUMP UNITS

DESCRIPTION	VOLT CODE	CONTACTOR/ OVERLOAD	UNIT MODELS					
			DIRECT-FIRED				STEAM	
			12SC & 13S	13SC & 14S	14 SC & 15S	15SL & 16S	14SC & 15S	
SOLUTION PUMP MOTOR CONTACTOR (1M) AND OVERLOAD (1OL)	17	CONTACTOR	024-25584-000	024-25584-000	024-25584-000	024-25584-000	024-25584-000	
		OVERLOAD	024-26187-000	024-26187-000	024-26187-000	024-25581-000	024-26187-000	
	28	CONTACTOR	024-25584-000	024-25584-000	024-25584-000	024-25584-000	024-25584-000	
		OVERLOAD	024-26187-000	024-26187-000	024-26187-000	024-25581-000	024-27284-000	
	46	CONTACTOR	024-25584-000	024-25584-000	024-25584-000	024-25526-000	024-25584-000	
		OVERLOAD	024-25587-000	024-25587-000	024-25587-000	024-25587-000	024-27268-000	
	50	CONTACTOR	024-25584-000	024-25584-000	024-25584-000	024-25584-000	024-25584-000	
		OVERLOAD	024-25587-000	024-25587-000	024-25587-000	024-25587-000	024-27282-000	
	REFRIGERANT PUMP MOTOR CONTACTOR (2M) AND OVERLOAD (2OL)	17	CONTACTOR	024-25521-000	024-25521-000	024-25521-000	024-25526-000	024-25521-000
			OVERLOAD	024-25578-000	024-25578-000	024-25578-000	024-25587-000	024-25579-000
28		CONTACTOR	024-25521-000	024-25521-000	024-25521-000	024-25526-000	024-25521-000	
		OVERLOAD	024-25578-000	024-25578-000	024-25578-000	024-25578-000	024-25579-000	
46		CONTACTOR	024-25521-000	024-25521-000	024-25521-000	024-25521-000	024-25521-000	
		OVERLOAD	024-25577-000	024-25577-000	024-25577-000	024-25578-000	024-27280-000	
50		CONTACTOR	024-25521-000	024-25521-000	024-25521-000	024-25521-000	024-25521-000	
		OVERLOAD	024-25576-000	024-25576-000	024-25576-000	024-25579-000	024-27280-000	

NOTE: Contactors include suppressors.

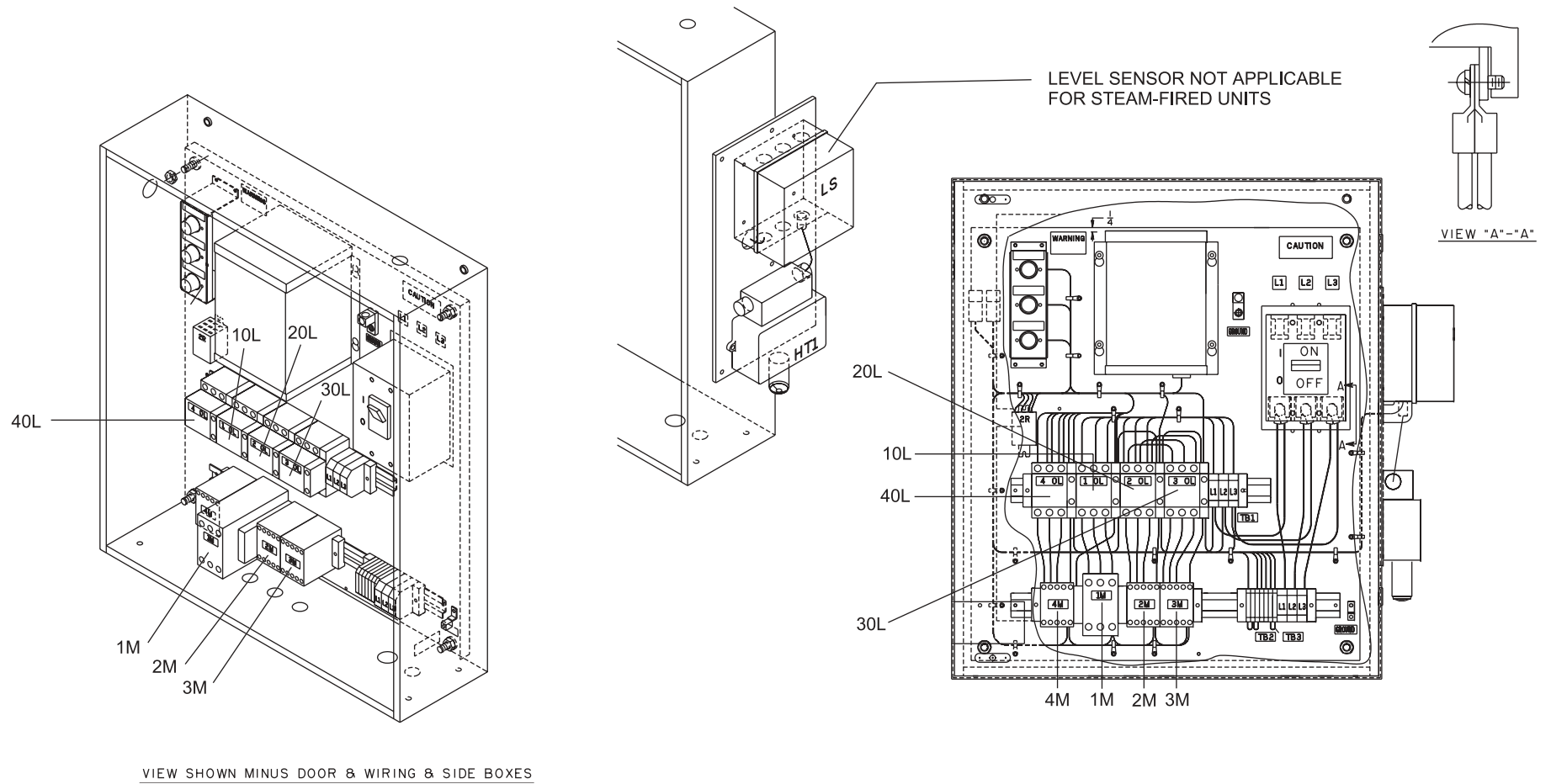
SEE FIGS. 5 & 6

POWER PANEL COMPONENTS (CONT'D)
CONTACTORS AND OVERLOADS FOR LIQUID PUMPS
ON THREE PUMP, DIRECT-FIRED UNITS

DESCRIPTION	VOLT CODE	CONTACTOR/ OVERLOAD	UNIT MODELS			
			16SL	17S	18S	19S
Solution Pump Motor Contactor (1M) and Overload (1OL)	17	Contactactor	024-25585-000	024-25585-000	024-25585-000	024-25585-000
		Overload	024-25581-000	024-25581-000	024-25581-000	024-25581-000
	28	Contactactor	024-25585-000	024-25585-000	024-25585-000	024-25585-000
		Overload	024-25581-000	024-25581-000	024-25581-000	024-25581-000
	46	Contactactor	024-25584-000	024-25584-000	024-25584-000	024-25584-000
		Overload	024-25580-000	024-25580-000	024-25580-000	024-25580-000
50	Contactactor	024-25584-000	024-25584-000	024-25584-000	024-25584-000	
	Overload	024-25580-000	024-25580-000	024-25580-000	024-25580-000	
Refrigerant Pump Motor Contactor (2M) and Overload (2OL)	17	Contactactor	024-25526-000	024-25526-000	024-25526-000	024-25526-000
		Overload	024-25587-000	024-25587-000	024-25587-000	024-25587-000
	28	Contactactor	024-25526-000	024-25526-000	024-25526-000	024-25526-000
		Overload	024-25587-000	024-25587-000	024-25587-000	024-25587-000
	46	Contactactor	024-25521-000	024-25521-000	024-25521-000	024-25521-000
		Overload	024-25578-000	024-25578-000	024-25578-000	024-25578-000
50	Contactactor	024-25526-000	024-25526-000	024-25526-000	024-25526-000	
	Overload	024-25579-000	024-25579-000	024-25579-000	024-25579-000	
Solution Spray Pump Motor Contactor (4M) and Overload (4OL)	17	Contactactor	024-25526-000	024-25526-000	024-25526-000	024-25585-000
		Overload	024-25587-000	024-25587-000	024-25587-000	024-25581-000
	28	Contactactor	024-25526-000	024-25526-000	024-25526-000	024-25585-000
		Overload	024-25587-000	024-25587-000	024-25587-000	024-25581-000
	46	Contactactor	024-25521-000	024-25521-000	024-25521-000	024-25584-000
		Overload	024-25578-000	024-25578-000	024-25578-000	024-25587-000
50	Contactactor	024-25521-000	024-25521-000	024-25521-000	024-25584-000	
	Overload	024-25579-000	024-25579-000	024-25579-000	024-25580-000	

NOTE: Contactors include suppressors.

SEE FIG. 6 ON FOLLOWING PAGE



VIEW SHOWN MINUS DOOR & WIRING & SIDE BOXES

FIG. 6 – 3 PUMP UNITS

LD03442

POWER PANEL COMPONENTS (CONT'D)
CONTACTORS AND OVERLOADS FOR LIQUID PUMPS
ON THREE PUMP, STEAM-FIRED UNITS

DESCRIPTION	VOLT CODE	CONTACTOR/ OVERLOAD	UNIT MODELS			
			16SL	17S	18S	19S
Solution Pump Motor Contactor (1M) and Overload (1OL)	17	Contactor	024-25585-000	024-25585-000	024-25585-000	024-25585-000
		Overload	024-25581-000	024-25581-000	024-25581-000	024-25581-000
	28	Contactor	024-25585-000	024-25585-000	024-25585-000	024-25585-000
		Overload	024-25581-000	024-25581-000	024-25581-000	024-25581-000
	46	Contactor	024-25584-000	024-25584-000	024-25584-000	024-25584-000
		Overload	024-25580-000	024-25580-000	024-25580-000	024-25580-000
50	Contactor	024-25584-000	024-25584-000	024-25584-000	024-25584-000	
	Overload	024-25580-000	024-25580-000	024-25580-000	024-25580-000	
Refrigerant Pump Motor Contactor (2M) and Overload (2OL)	17	Contactor	024-25526-000	024-25526-000	024-25526-000	024-25526-000
		Overload	024-25587-000	024-25587-000	024-25587-000	024-25587-000
	28	Contactor	024-25526-000	024-25526-000	024-25526-000	024-25526-000
		Overload	024-25587-000	024-25587-000	024-25587-000	024-25587-000
	46	Contactor	024-25521-000	024-25521-000	024-25521-000	024-25521-000
		Overload	024-25579-000	024-25579-000	024-25579-000	024-25578-000
50	Contactor	024-25521-000	024-25521-000	024-25521-000	024-25521-000	
	Overload	024-25579-000	024-25579-000	024-25579-000	024-25579-000	
Solution Spray Pump Motor Contactor (4M) and Overload (4OL)	17	Contactor	024-25526-000	024-25526-000	024-25526-000	024-25585-000
		Overload	024-25587-000	024-25587-000	024-25587-000	024-25581-000
	28	Contactor	024-25526-000	024-25526-000	024-25526-000	024-25585-000
		Overload	024-25587-000	024-25587-000	024-25587-000	024-25581-000
	46	Contactor	024-25521-000	024-25521-000	024-25521-000	024-25584-000
		Overload	024-25579-000	024-25579-000	024-25579-000	024-25587-000
50	Contactor	024-25521-000	024-25521-000	024-25521-000	024-25584-000	
	Overload	024-25579-000	024-25579-000	024-25579-000	024-25580-000	

NOTE: Contactors include suppressors.

SEE FIG. 6

POWER PANEL COMPONENTS (CONT'D)
NON-FUSED DISCONNECT SWITCHES

DESCRIPTION	VOLT CODE	DIRECT FIRED UNIT MODELS				
		12SC & 13S	13SC & 14S	14SC & 15S	15SL	16S
Non-Fused Disconnect Switch	ALL	024-25575-000	024-25575-000	024-25575-000	024-25575-000	024-25575-000

DESCRIPTION	VOLT CODE	DIRECT FIRED UNIT MODELS			
		16SL	17S	18S	19S
Non-Fused Disconnect Switch	17	024-25565-000	024-25565-000	024-25565-000	024-25565-000
	28	024-25565-000	024-25565-000	024-25565-000	024-25565-000
	46	024-25575-000	024-25575-000	024-25575-000	024-25575-000
	50	024-25575-000	024-25575-000	024-25575-000	024-25575-000

DESCRIPTION	VOLT CODE	STEAM FIRED UNIT MODELS			
		16SL	17S	18S	19S
Non-Fused Disconnect Switch	ALL	024-25575-000	024-25575-000	024-25575-000	024-25575-000

POWER PANEL COMPONENTS (CONT'D)
CONTROL COMPONENTS

ITEM	DESCRIPTION	VOLT. CODE	QTY.	PART NUMBER
1	CONTROL TRANSFORMER	17	1	025-28664-001
		28	1	025-28664-002
		46	1	025-28664-002
		50	1	025-28664-003
2	PRIMARY FUSE (1 FU, 2 FU)	17	2	025-27972-000
		28	2	025-27971-000
		46	2	025-27922-000
		50	2	025-27922-000
3	PRIMARY FUSE (3 FU)	ALL	1	025-27971-000
4	RELAY CONTROL (2R)	ALL	1	024-23962-000
	SUPPRESSOR (NOT SHOWN) (USED WITH ITEM 4)	ALL	1	031-00808-000
5	FIRST STAGE GENERATOR HIGH TEMP. CONTROL (HT1)	ALL	1	025-29995-000
6	LOW SOLUTION LEVEL CONTROL (LS) (DIRECT-FIRED UNITS ONLY) KIT CONTAINS: 1) level controller 2) electrode (probe) 3) wiring kit	ALL	1	225-29922-000
				025-29922-000
				024-25572-000
				575-06503-451
7	HOUSING PLUG, UNIVERSAL (9 PIN)	ALL	1	025-21192-000
8	HOUSING PLUG, UNIVERSAL (12 PIN)	ALL	1	025-21196-000
9	SOCKET, UNIVERSAL (PINS)	ALL	16 total	025-19673-000

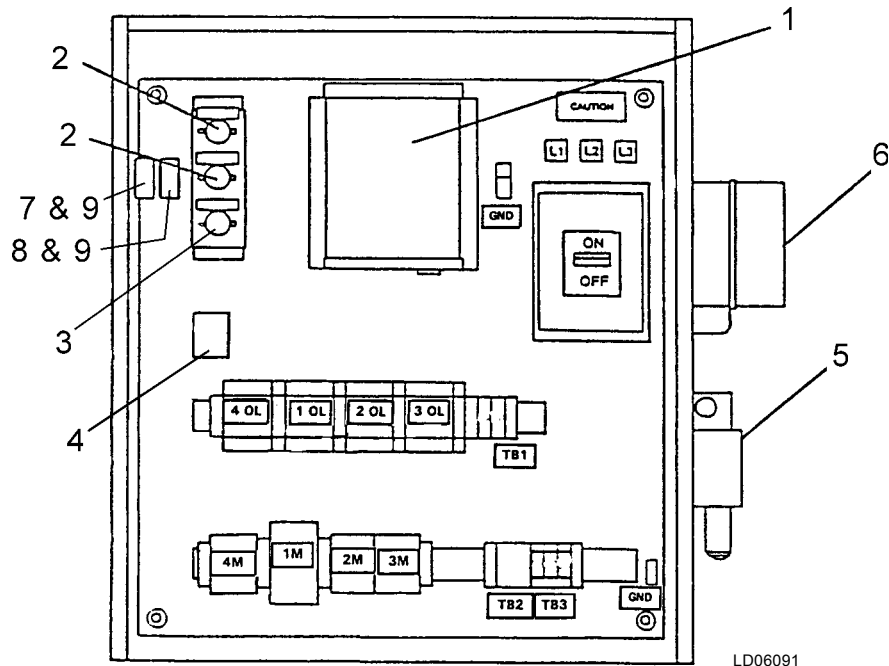
REFER TO FIG. ON FOLLOWING PAGE FOR COMPONENT LOCATIONS

SYSTEM CONTROL COMPONENTS LOCATED ON UNIT

DESCRIPTION	VOLT. CODE	QTY.	PART NUMBER	
			DIRECT-FIRED	STEAM
TEMPERATURE SENSOR (50,000 Ohms) (First Stage Generator & Solution/Dilution)	ALL	2	025-29924-000	025-29924-000
TEMPERATURE SENSOR (3,000 Ohms) (Low temperature areas of unit) (includes RT12)	ALL	6	025-29964-000	025-29964-000
TEMPERATURE SENSOR (3,000 Ohms) (Hi-temp aux. Heating, Direct-Fired Units only)	ALL	8	025-29964-000	—
VARISTOR, METAL OXIDE (used with Honeywell Steam Valve Actuator)	ALL	2	—	031-01349-000
SUPPRESSOR (used with Steam solenoid valve, 5SOL)	ALL	1	—	031-00808-000
CURRENT SWITCH (used only on 16SL and 17S units)	ALL	8	—	025-30974-000
LOW REFRIGERANT TEMP. CONTROL (LRT)	ALL	1	225-30494-000	225-30494-000
PRESSURE TRANSDUCER (PT1)	ALL	1	025-29907-001	025-29907-001
PRESSURE TRANSDUCER (PT3, PT4) for Auto-Purge	ALL	2	025-29907-002	025-29907-002
ISOLATOR (vilter steady mount) (for use with PT1)	ALL	1	026-30229-000	026-30229-000
FIRST STAGE GENERATOR HIGH PRESSURE CONTROL (HP1) (calibrated to 710 mm Hg)	ALL	1	224-25525-058	224-25525-058
CABLE, 2-conductor gray cable with foil shield and drain wire 20 AWG - for thermistors	ALL	—	025-28701-002	025-28701-002
CABLE, 3-conductor gray cable with foil shield and drain wire 20 AWG - for pressure transducers	ALL	—	025-28701-003	025-28701-003
MOV 155 Volts Applications (See Note 2)	ALL	—	331-00485-000	331-00485-000


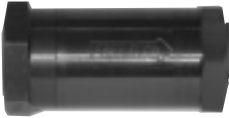
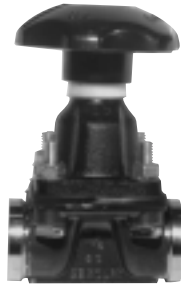


Notes:

1. See major component location drawings in this document for system control locations on unit.
2. Part no. consists of: 1-(031-0266-000) MOV and 2-(025-11190) straight - Push on spade terminals.



REFER TO TABLE ON PREVIOUS PAGE FOR COMPONENT DESCRIPTION

VALVES

TYPE	DESCRIPTION	PART NUMBER	ILLUSTRATION
LUG TYPE BUTTERFLY VALVES	2 INCH 2-1/2 INCH 3 INCH 4 INCH 5 INCH 6 INCH	022-10033-000 022-10034-000 022-10035-000 022-10036-000 022-10037-000 022-10038-000	 00402VIP
CHECK	1/2 INCH FLAPPER (SWING TYPE)	022-09517-000	 28733A
DIAPHRAGM	1/2" COMPLETE (STYLE A) SS SOCKET WELD VALVE REPLACEMENT DIAPHRAGM FOR ABOVE VALVE REPLACEMENT BONNET ASSEMBLY FOR ABOVE VALVE 1/2" COMPLETE (STYLE B) SS SOCKET WELD VALVE REPLACEMENT DIAPHRAGM FOR ABOVE VALVE REPLACEMENT BONNET ASSEMBLY FOR ABOVE VALVE 3/4" COMPLETE (STYLE A) SS SOCKET WELD VALVE REPLACEMENT DIAPHRAGM FOR ABOVE VALVE REPLACEMENT BONNET ASSEMBLY FOR ABOVE VALVE 3/4" COMPLETE (STYLE B) SS SOCKET WELD VALVE REPLACEMENT DIAPHRAGM FOR ABOVE VALVE REPLACEMENT BONNET ASSEMBLY FOR ABOVE VALVE 1/2" COMPLETE (NPTI CONNECTIONS) VALVE	022-10618-000 022-10057-000 022-10058-000 022-08869-052 022-09126-000 022-09125-000 022-10633-000 022-05125-000 022-10634-000 022-02457-000 022-10635-000 022-10636-000 022-02046-000	 28731A STYLE B  29471A STYLE A
SAMPLE	1/2 INCH SPINDLE TYPE CAPS AND SPINDLE REPAIR KIT (2 OUTER AND 2 INNER "O"-RINGS)	022-08869-001 028-12271-001	 00405VIP
FLOW SETTING	1/2 INCH SPINDLE TYPE CAPS AND SPINDLE REPAIR KIT 1 INCH SPINDLE TYPE CAPS AND SPINDLE REPAIR KIT 1-1/2 INCH SPINDLE TYPE CAPS AND SPINDLE REPAIR KIT 1/2 INCH ANGLE VALVE	022-08869-002 028-12271-002 022-08869-003 028-12271-003 022-08869-004 028-12271-004 022-08869-050	 27089A



VALVES (CONT'D)

TYPE	DESCRIPTION	PART NUMBER	ILLUSTRATION
GLOBE	3/4 INCH ANGLE VALVE	022-08869-053	 <p style="text-align: right;">27087A</p>
	1 INCH ANGLE VALVE	022-08869-051	
	1-1/2 INCH ANGLE VALVE	022-08869-028	
	CAP GASKET FOR 1-1/2 INCH VALVE	022-08869-031	
	2 INCH ANGLE VALVE	022-08869-030	
	CAP GASKET FOR 2 INCH VALVE	028-12271-025	
	2-1/2 INCH ANGLE VALVE	022-08869-031	
	CAP GASKET FOR 2-1/2 INCH VALVE	028-12271-026	
	3 INCH ANGLE VALVE	022-08869-032	
	CAP GASKET FOR 3 INCH VALVE	028-12271-027	
4 INCH ANGLE VALVE	022-08869-033		
CAP GASKET FOR 4 INCH VALVE	028-12271-028		
NEEDLE	3/4 INCH NPTI	022-08891-000	 <p style="text-align: right;">27085A</p>
	1 INCH NPTI	022-08892-000	
RELIEF HIGH-TEMP (AUX. HEATER)	3/4 INCH NPTI X 1 (RATED 150 PSI)	022-08879-000	 <p style="text-align: right;">28730A</p>
	3/4" x 1-1/4" (RATED 300 PSI)	022-10041-000	
SOLENOID	1/2 INCH NPTI PURGE TANK (1SOL) VALVE	022-09563-000	 <p style="text-align: right;">28732A</p>
	3/4 INCH STEAM CONDENSATE DRAIN (5SOL) VALVE	025-29538-002	
	1" STEAM CONDENSATE DRAIN VALVE (5SOL)	025-29538-003	
	1-1/4" STEAM CONDENSATE DRAIN VALVE (5SOL)	025-29538-004	
ELECTRICALLY ACTUATED PURGE BALL VALVE	1/2" SIEMENS ACTUATOR W/ SWAGELOK BALL VALVE	022-10042-000	 <p style="text-align: right;">00401VIP</p>
	1/2" SWAGELOK BALL VALVE ONLY	022-10059-000	
	SEAL KIT FOR ABOVE BALL VALVE	022-10061-000	
	REPLACEMENT ACTUATOR ONLY FOR ABOVE BALL VALVE	022-10060-000	
NEW STYLE GLOBE VALVES	1-1/2" WITH CAP	022-10097-000	 <p style="text-align: right;">VALVE-3AB</p>
	SPARE PARTS KIT ¹	022-10602-000	
	COMPLETE REPAIR KIT ²	022-10603-000	
	CAP SEAL ONLY	022-10620-000	
	2" WITH CAP	022-10098-000	
	SPARE PARTS KIT ¹	022-10604-000	
	COMPLETE REPAIR KIT ²	022-10605-000	
	CAP SEAL ONLY	022-10621-000	
	2-1/2" WITH CAP	022-10099-000	
	SPARE PARTS KIT ¹	022-10606-000	
COMPLETE REPAIR KIT ²	022-10607-000		
CAP SEAL ONLY	022-10622-000		

¹Used when valve is leaking externally. Contains: gasket for valve cap (1), and "O" ring (2) for valve bonnet

²Used when valve is leaking internally. Contains: cone (5), set screw (3), steel balls (4), "O" ring (2), packing gland assembly (not shown) and gasket for valve cap (1).

STEAM CONTROL VALVES AND ACTUATORS

TYPE	DESCRIPTION	SIZE	RATING	COMPLETE VALVE PART NUMBER	REPLACEMENT ACTUATOR P/N	ILLUSTRATION
CAGE 2-WAY	STEEL BODY - 60 HZ	2"	150#	022-08889-000	024-26512-000	 <p style="text-align: right;">28734A</p>
		2-1/2"	150#	022-08888-000	024-26512-000	
		3"	150#	022-08887-000	024-26512-000	
			300#	022-08899-000	024-26512-000	
		4"	150#	022-08886-000	024-26512-000	
GLOBE 2-WAY	CAST IRON BODY - 50HZ	2"	125#	022-10008-000	022-10070-000	 <p style="text-align: right;">00404VIP</p>
	CAST IRON BODY - 60HZ			022-10000-000	022-10069-000	
	STEEL BODY - 50HZ		150#	022-10012-000	022-10070-000	
	STEEL BODY - 60HZ			022-10004-000	022-10069-000	
	CAST IRON BODY - 50HZ	2-1/2"	125#	022-10009-000	022-10088-000	
	CAST IRON BODY - 60HZ			022-10001-000	022-10086-000	
	STEEL BODY - 50HZ		150#	022-10013-000	022-10088-000	
	STEEL BODY - 60HZ			022-10005-000	022-10086-000	
	CAST IRON BODY - 50HZ	3"	125#	022-10010-000	022-10089-000	
	CAST IRON BODY - 60HZ			022-10002-000	022-10087-000	
	STEEL BODY - 50HZ		150#	022-10014-000	022-10089-000	
	STEEL BODY - 60HZ			022-10006-000	022-10087-000	
	CAST IRON BODY - 50HZ	4"	125#	022-10011-000	022-10089-000	
	CAST IRON BODY - 60HZ			022-10003-000	022-10087-000	
	STEEL BODY - 50HZ		150#	022-10015-000	022-10089-000	
	STEEL BODY - 60HZ			022-10007-000	022-10087-000	

NOTES:

MOV (Metal Oxide Varistor) for Actuator (qty., 2 per actuator): 031-01349-000.
 Harness connector for Globe 2-way valves: 025-09020-000.

PUMPS, COMPLETE ASSEMBLIES

UNIT MODEL	VOLTAGE	REFRIGERANT PUMP	SOLUTION PUMP	SOLUTION SPRAY PUMP
NEW STYLE PUMPS				
12SC, 13S¹	208/230/460-3-60	026-33600-001	026-33601-001	N/A
	380 / 3 / 50	026-33821-001	026-33822-001	N/A
13SC, 14S¹	208/230/460-3-60	026-33600-001	026-33601-001	N/A
	380 / 3 / 50	026-33821-001	026-33822-001	N/A
14SC, 15S¹	208/230/460-3-60	026-33600-001	026-33601-001	N/A
	380 / 3 / 50	026-33821-001	026-33822-001	N/A
15SL¹	208/230/460-3-60	026-33600-003	026-33601-002	N/A
	380-3-50	026-33821-003	026-33822-002	N/A
16S¹	208/230/460-3-60	026-33600-003	026-33601-002	N/A
	380-3-50	026-33821-003	026-33822-002	N/A
16SL	208/230/460-3-60	026-33600-004	026-33874-001	026-33874-004
	380-3-50	026-33821-004	026-33875-001	026-33875-004
17S	208/230/460-3-60	026-33600-004	026-33874-001	026-33874-004
	380-3-50	026-33821-004	026-33875-001	026-33875-004
18S	208/230/460-3-60	026-33600-004	026-33874-002	026-33874-005
	380-3-50	026-33821-004	026-33875-002	026-33875-005
19S	208/230/460-3-60	026-33600-004	026-33874-002	026-33874-006
	380-3-50	026-33821-004	026-33875-003	026-33875-006

NOTES:

1. These units have double ended pumps (Solution and Strong Solution pumps operate off of a common motor).

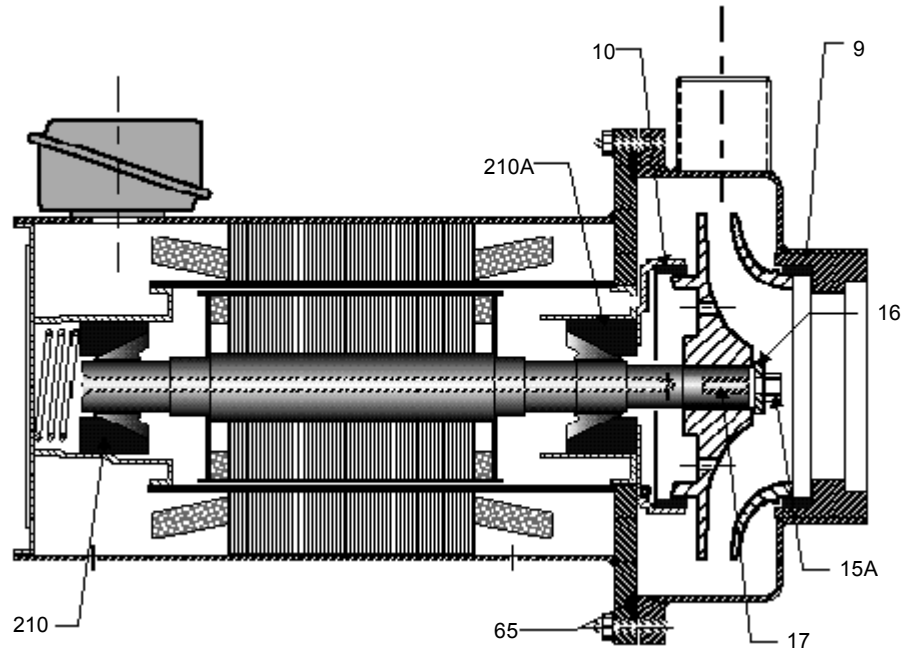
PUMP REPAIR KIT CONTENTS

(SEE ILLUSTRATIONS ON FOLLOWING PAGES FOR COMPONENT LOCATION)

PUMP REPAIR KIT		MOTOR BEARING REPAIR		NEW MOTOR WITH PUMP REPAIR KIT		CASING GASKETS	
ITEM #	PART	ITEM #	PART	ITEM #	PART	ITEM #	PART
9	CASING WEAR RING	9	CASING WEAR RING	9	CASING WEAR RING	65	CASING GASKET
10	MOTOR SIDE WEARING RING	10	MOTOR SIDE WEARING RING	10	MOTOR SIDE WEARING RING		
15A	IMPELLER LOCKING SCREW	15A	IMPELLER LOCKING SCREW	15A	IMPELLER LOCKING SCREW		
16	IMPELLER LOCKING WASHER	16	IMPELLER LOCKING WASHER	16	IMPELLER LOCKING WASHER		
17	FEATHER KEY, IMPELLER	17	FEATHER KEY, IMPELLER	17	FEATHER KEY, IMPELLER		
65	CASING GASKET	65	CASING GASKET	65	CASING GASKET		
		210A	BEARING	201	MULTI VOLTAGE MOTOR		
		210	BEARING (FRONT END)				

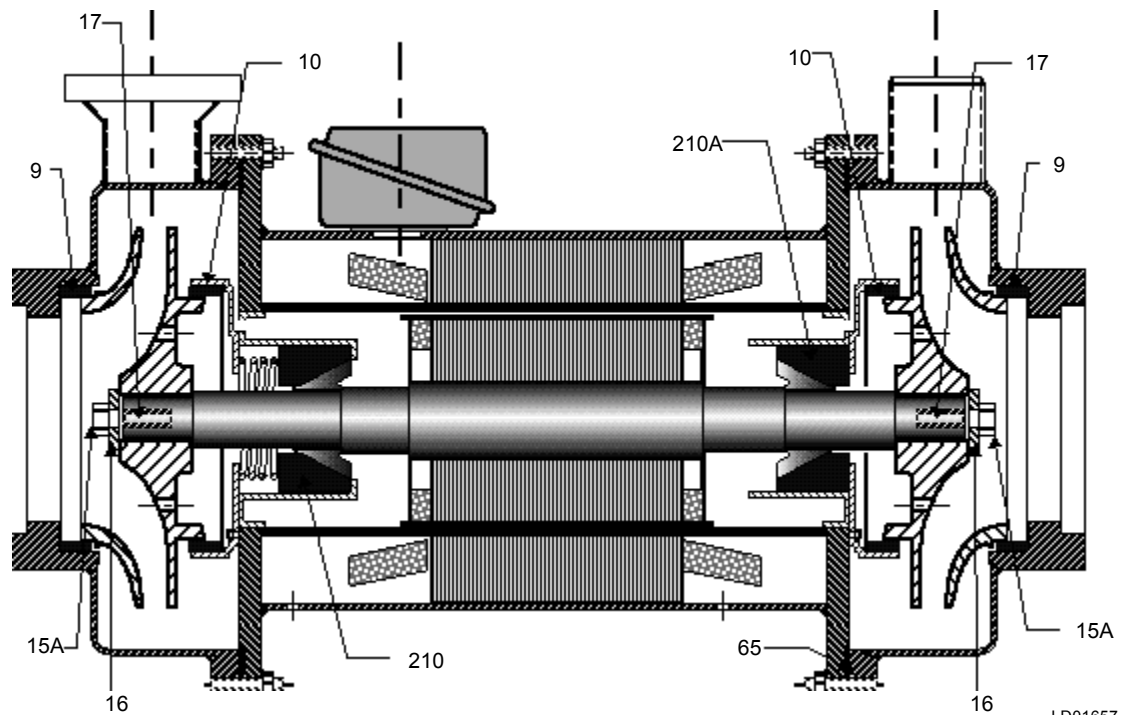
NOTE:

Casing Gasket is "O" ring type elastomer.



LD01656

SINGLE-ENDED PUMP



LD01657

DOUBLE-ENDED PUMP

PUMP REPAIR KITS NEW STYLE PUMPS

YORK PART NUMBER	PUMP MODEL NUMBER	PUMP REPAIR KIT	MOTOR BEARING REPAIR KIT	NEW MOTOR WITH PUMP REPAIR	CASING GASKET
60 HZ PUMPS					
026-33600-001	P8 - 106	026-33828-000	026-33826-000	024-26938-000	028-12913-000
026-33600-002	P8 - 106	026-33828-000	026-33826-000	024-26938-000	028-12913-000
026-33600-003	66M - 709	026-32389-000	026-32391-000	024-26934-000	028-12700-000
026-33600-004	66M - 709	026-32389-000	026-32391-000	024-26934-000	028-12700-000
026-33601-001	66R - 709/609	026-33829-000 ¹	026-33827-000 ²	024-26939-000	028-12914-000 ³
026-33601-002	66V - 709/609	026-33829-000 ¹	026-33827-000 ²	024-27206-000	028-12914-000 ³
026-33874-001	215ZB - 8011	026-32390-000	026-32392-000	024-26937-000	028-12599-000
026-33874-002	215ZB - 8011	026-32390-000	026-32392-000	024-26937-000	028-12599-000
026-33874-003	215ZB - 8011	026-32390-000	026-32392-000	024-26937-000	028-12599-000
026-33874-004	66M - 709	026-32389-000	026-32391-000	024-26934-000	028-12700-000
026-33874-005	66M - 709	026-32389-000	026-32391-000	024-26934-000	028-12700-000
026-33874-006	215R - 8011	026-32390-000	026-32392-000	024-26936-000	028-12599-000
50 HZ PUMPS					
026-33821-001	P8 - 106	026-33828-000	026-33826-000	026-33845-000	028-12913-000
026-33821-002	P8 - 106	026-33828-000	026-33826-000	026-33845-000	028-12913-000
026-33821-003	66R - 709	026-32389-000	026-32391-000	026-34458-000	028-12700-000
026-33821-004	66R - 709	026-32389-000	026-32391-000	026-34458-000	028-12700-000
026-33822-001	66R - 709/609	026-33829-000 ¹	026-33827-000 ²	026-33846-000	028-12914-000 ³
026-33822-002	66V - 709/609	026-33829-000 ¹	026-33827-000 ²	026-33847-000	028-12914-000 ³
026-33875-001	215ZB - 8011	026-32390-000	026-32392-000	026-34459-000	028-12599-000
026-33875-002	215ZB - 8011	026-32390-000	026-32392-000	026-34459-000	028-12599-000
026-33875-003	215ZB - 8011	026-32390-000	026-32392-000	026-34459-000	028-12599-000
026-33875-004	66R - 709	026-32389-000	026-32391-000	026-34458-000	028-12700-000
026-33875-005	66R - 709	026-32389-000	026-32391-000	026-34458-000	028-12700-000
026-33875-006	215R - 8011	026-32340-000	026-32392-000	026-34460-000	028-12599-000

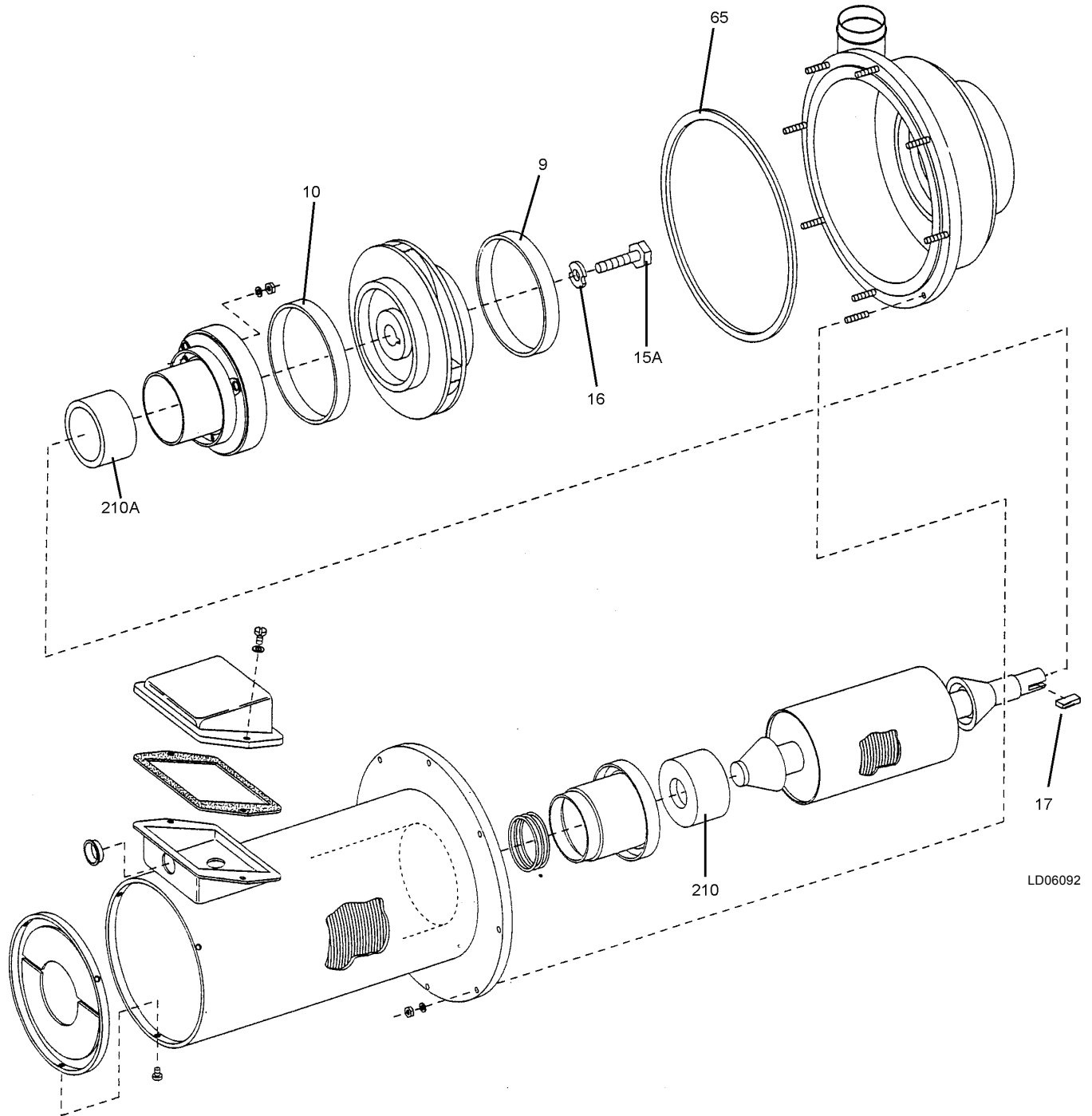
NOTES FOR DOUBLE ENDED PUMPS:

1. Quantity of two for all parts in this kit.
2. Quantity of two for all parts except for motor bearing in which one set will be included.
3. Kit includes two "O" ring type gaskets.
4. New Style pump inlet and outlet sizes are as follows:

MODEL	INLET (IN.)	OUTLET (IN.)
106	3	2
709	4	3
609	4	3
8011	6	4

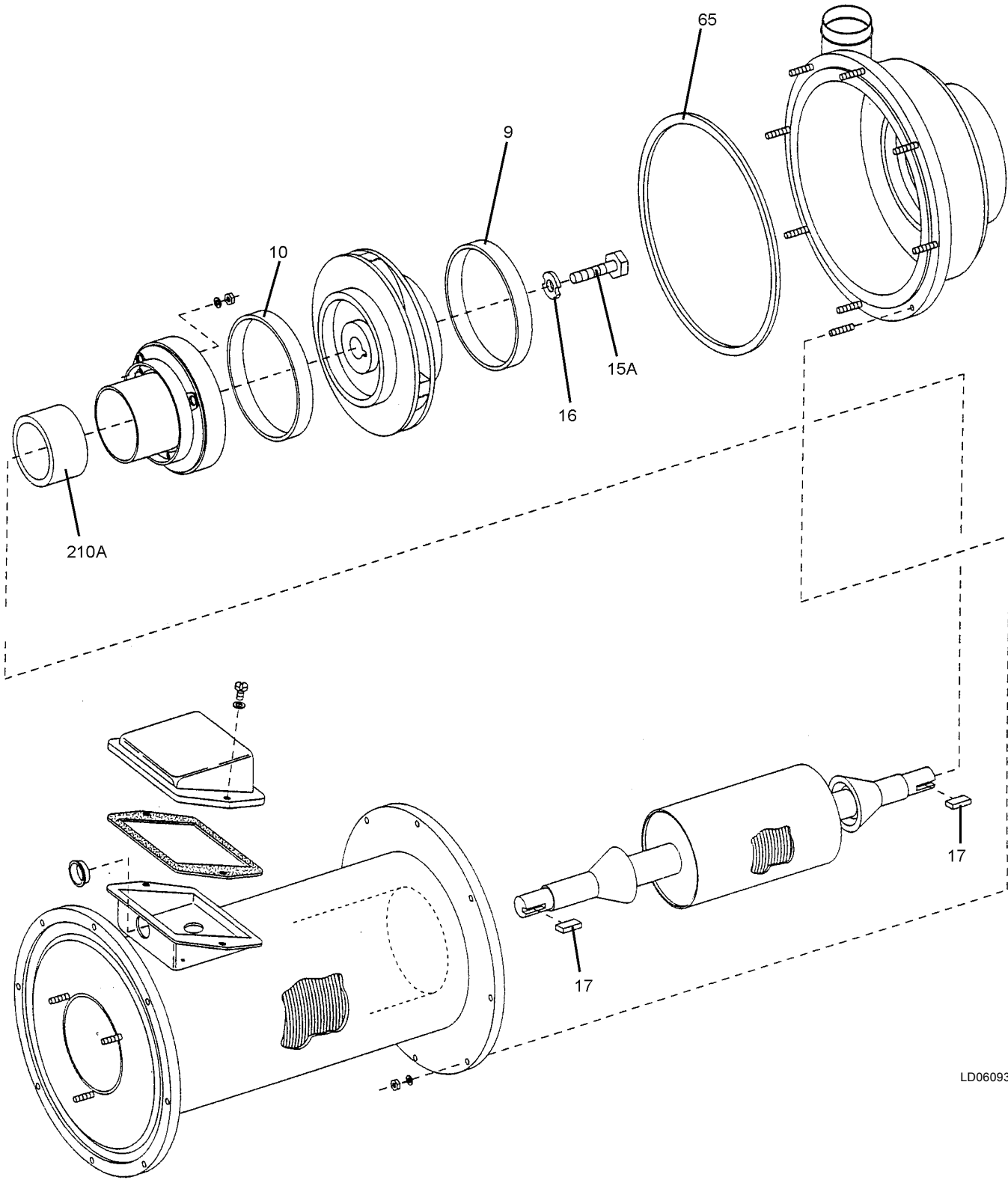
5. Pumps require one motor bearing kit and one pump repair kit per pump every 50,000 operating hours.

PUMP, SINGLE-ENDED EXPLODED VIEW



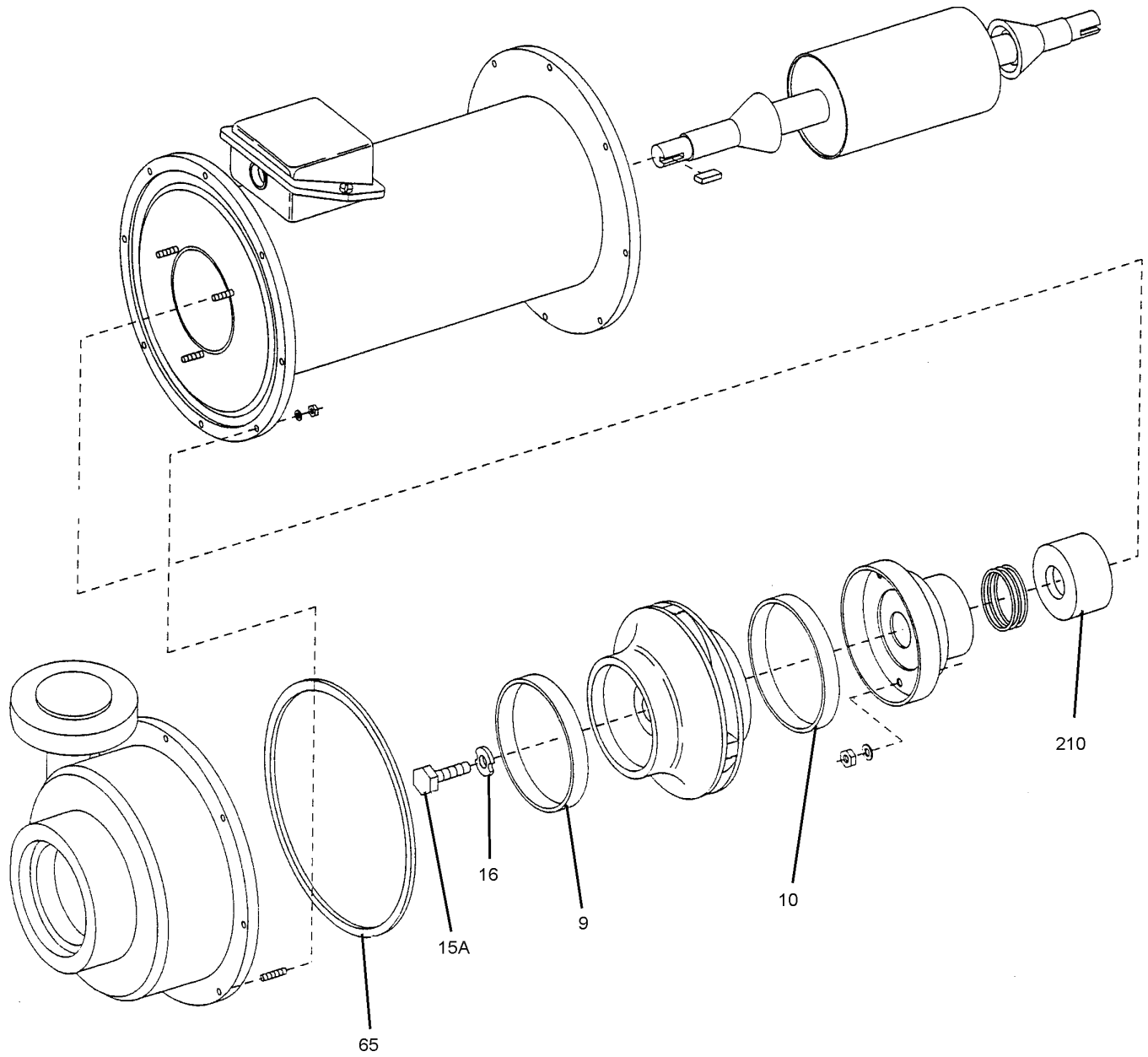
LD06092

PUMP, DOUBLE-ENDED EXPLODED VIEW



LD06093

PUMP, DOUBLE-ENDED EXPLODED VIEW



LD06094

PURGE VACUUM PUMPS AND PARTS

UNIT MODEL	VOLTAGE	APPLICATION	YORK P/N
Complete York Model 1400 Vacuum Pump (0.9 CFM)			
S-Models	208/230/460-3-60	Standard	026-33637-000
	380-3-50	Standard	026-33832-000
Complete York Model 1402 Vacuum Pump (5.6 CFM)			
G-Models	208/230/460-3-60	Standard	026-32305-000
	575-3-50	Standard	026R00250-000
	380-3-50	Standard	026-32377-000
	208/230/460-3-60	TEFC	026-32842-000

York Vacuum Pump Gasket and Seal Kit (for York Vacuum Pump Model 1402 only)
York part number 026-32388-000 (order Major Repair Manual before doing any repairs)

DESCRIPTION	QUANTITY	PART NUMBER
Seal Kit	Qty. 1	1-98-4029
Pump Oil	1 gallon	1401D
Gaskets	1 each	41-0234 & 41-0403
Aluminum Washer	Qty. 1	41-0491
Steel Case Oil Seal	Qty. 1	41-0578
O-ring Tension Washer	Qty. 2	41-1266
Rubber Washer	Qty. 2	41-1267
Seal Cover Gasket	Qty. 1	41-2291

PURGE VACUUM PUMPS AND PARTS

Miscellaneous York Vacuum Pump Parts

DESCRIPTION	YORK P/N	WELCH P/N	COMMENTS
York Pump Model No. 1400			
V-belt	028-14422-000	1400A	For use with p/n 026-33637-000
V-belt	028-14423-000	1399A	For use with p/n 026-33832-000
Motor Pulley		41-0551	For use with p/n 026-33637-000
Motor Pulley		41-2377	For use with p/n 026-33832-000
Pump Pulley		41-2191	
Belt-Guard Replacement kit		1471H	
Base		41-2115	
Motor		61-8504A	For use with p/n 026-33637-000
Motor		61-8717	For use with p/n 026-33832-000
Pump Oil	011-00524-004	1407K-15	1 gallon of DUOSEAL Oil
Owners Manual		67-0696	Models 1400 and 1402
Discharge Port Adaptor Fitting		61-8503A	3/4"-20 male machine thds. X 1/2"- NPTE
Discharge pipe dust cap		41-1345	3/4"-20 machine thds.
York Pump Model No. 1402			
V-belt	028-14424-000	1405A	For use with p/n's 026-32305-000, 026R00249-000 & 026-32842-000
V-belt	028-14425-000	41-0713	For use with p/n 026-32377-000
Motor Pulley		41-0668	For use with p/n's 026-32305-000 and 026R00249-000
Pump Pulley		41-2074	For use with p/n's 026-32305-000 and 026R00249-000
Belt-Guard Replacement kit		1471G-01	For use with p/n's 026-32305-000 and 026R00249-000
Base		61-8717	For use with p/n's 026-32305-000 and 026R00249-000
Motor		61-8715	For use with p/n 026-33637-000
Motor		41-1904	For use with p/n 026-32305-000
Pump Oil	011-00524-004	1407K-15	1 gallon of DUOSEAL Oil
Owners manual		67-0696	Models 1400 and 1402
Discharge Port Adaptor Fitting		61-8492A	1"-20 male machine thds. X 3/4" NPTE X 2-1/4" long
Discharge pipe dust cap		41-0612	1"-20 machine thds.

ABSORPTION CHILLER TUBES

CHILLER MODEL / TUBE OPTION	LENGTH (IN.)	NOM O.D. (IN.)	WALL NOM. THK. (IN.)	ABSORBER TUBES			EVAPORATOR TUBES		
				QTY.	TYPE	PART NO.	QTY.	TYPE	PART NO.
TUBES FOR UNITS WITH 3/4 INCH THICK TUBESHEETS									
12SC & 13S STANDARD	126-1/8	5/8	0.025	405	Bare	007-08446-000	486	40 fpi ³	007-08445-000
12SC & 13S OPTION A	126-1/8	5/8	0.025	405	19 fpi	007-08447-000	—	—	—
13SC & 14S	126-1/8	5/8	0.025	405	40 fpi	007-08445-000	486	40 fpi ³	007-08445-000
14SC & 15S	157-5/8	5/8	0.025	405	40 fpi	007-07899-000	486	40 fpi ⁴	007-07899-000
15SL	157-5/8	3/4	0.028	525	Bare ²	007-08449-000	366	19 fpi	007-08448-000
16S	157-5/8	3/4	0.028	525	Bare ²	007-08449-000	408	19 fpi	007-08448-000
16SL	197	3/4	0.028	525	Bare ²	007-08474-000	366	19 fpi	007-08472-000
17S	197	3/4	0.028	525	Bare ²	007-08474-000	408	19 fpi	007-08472-000
18S	236-3/8	3/4	0.028	525	Bare ²	007-08428-000	408	19 fpi	007-08473-000
19S	275-3/4	3/4	0.028	525	Bare ²	007-08479-000	408	19 fpi	007-08478-000
TUBES FOR UNITS WITH 1 INCH THICK TUBESHEETS									
12SC & 13S STANDARD	126-5/8	5/8	0.025	405	Bare	007-08877-000	486	40 fpi ³	007-08866-000
12SC & 13S OPTION A	126-5/8	5/8	0.025	405	19 fpi	007-08863-000	—	—	—
13SC & 14S	126-5/8	5/8	0.025	405	40 fpi	007-08866-000	486	40 fpi ³	007-08866-000
14SC & 15S	158-1/8	5/8	0.025	405	40 fpi	007-08865-000	486	40 fpi ⁴	007-08865-000
15SL	158-1/8	3/4	0.028	525	Bare ²	007-08880-000	366	19 fpi	007-08868-000
16S	158-1/8	3/4	0.028	525	Bare ²	007-08880-000	408	19 fpi	007-08868-000
16SL	197-1/2	3/4	0.028	525	Bare ²	007-08881-000	366	19 fpi	007-08869-000
17S	197-1/2	3/4	0.028	525	Bare ²	007-08881-000	408	19 fpi	007-08869-000
18S	236-7/8	3/4	0.028	525	Bare ²	007-08882-000	408	19 fpi	007-08870-000
19S	276-1/4	3/4	0.028	525	Bare ²	007-08883-000	408	19 fpi	007-08871-000

NOTES:

- All tube material is C-122 copper except as noted.
- On 15SL thru 19S units, the column of absorber tubes adjacent to the evaporator are Bare, 90/10 CuNi, quantity 25.

Units with 3/4" thick tube sheets:

- 15SL thru 16S units; 90/10 CuNi tube p/n 007-08823-000.
- 16SL thru 17S units; 90/10 CuNi tube p/n 007-08808-000.
- 18S units; 90/10 CuNi tube p/n 007-08824-000.
- 19S units; 90/10 CuNi tube p/n 007-08825-000.

Units with 1" thick tube sheets:

- 15SL thru 16S units; 90/10 CuNi tube p/n 007-08880-000.
- 16SL thru 17S units; 90/10 CuNi tube p/n 007-08881-000.
- 18S units; 90/10 CuNi tube p/n 007-08882-000.
- 19S units; 90/10 CuNi tube p/n 007-08883-000.

- 12SC through 14S units; top 2 rows of evaporator tubes are Bare copper.
 - Units with 3/4" thick tube sheets, p/n 007-08446-00, qty 16.
 - Units with 1" thick tube sheets, p/n 007-08877-000, qty 16.
- 14SC and 15S units; top 2 rows of evaporator tubes are Bare copper.
 - Units with 3/4" thick tube sheets, p/n 007-08426-000, qty 16.
 - Units with 1" thick tube sheets, p/n 007-08878-000, qty 16.

CONDENSER TUBES			LOW TEMP. GENERATOR TUBES			HIGH-TEMPERATURE HOT WATER HEATERS				
QTY.	TYPE	PART NO.	QTY.	TYPE	PART NO.	QTY.	TYPE	LENGTH	O.D.	PART NO.
TUBES FOR UNITS WITH 3/4 INCH THICK TUBESHEETS						7/8" THICK TUBESHEETS				
140	Bare	007-08446-000	313	Bare	007-08446-000	132	Bare	51-1/8"	5/8"	007-08024-000
—	—	—	—	—	—	—	—	—	—	—
140	Bare	007-08446-000	313	Bare	007-08446-000	160	Bare	51-1/8"	5/8"	007-08024-000
140	Bare	007-08426-000	313	Bare	007-08426-000	198	Bare	51-1/8"	5/8"	007-08024-000
160	Bare	007-08449-000	300	Bare	007-08449-000	280	Bare	51-1/8"	5/8"	007-08024-000
160	Bare	007-08449-000	333	Bare	007-08449-000	280	Bare	51-1/8"	5/8"	007-08024-000
160	Bare	007-08474-000	300	Bare	007-08474-000	235	Bare	78-1/8"	5/8"	007-08485-000
160	Bare	007-08474-000	333	Bare	007-08474-000	235	Bare	78-1/8"	5/8"	007-08485-000
160	Bare	007-08428-000	333	Bare	007-08428-000	305	Bare	78-1/8"	5/8"	007-08485-000
160	Bare	007-08479-000	333	Bare	007-08479-000	305	Bare	78-1/8"	5/8"	007-08485-000
TUBES FOR UNITS WITH 1 INCH THICK TUBESHEETS						ALL .035" WALL THICKNESS				
140	Bare	007-08877-000	313	Bare	007-08877-000	132	Bare	51-1/8"	5/8"	007-08024-000
—	—	—	—	—	—	—	—	—	—	—
140	Bare	007-08877-000	313	Bare	007-08877-000	160	Bare	51-1/8"	5/8"	007-08024-000
140	Bare	007-08878-000	313	Bare	007-08878-000	198	Bare	51-1/8"	5/8"	007-08024-000
160	Bare	007-08880-000	300	Bare	007-08880-000	280	Bare	51-1/8"	5/8"	007-08024-000
160	Bare	007-08880-000	333	Bare	007-08880-000	280	Bare	51-1/8"	5/8"	007-08024-000
160	Bare	007-08881-000	300	Bare	007-08881-000	235	Bare	78-1/8"	5/8"	007-08485-000
160	Bare	007-08881-000	333	Bare	007-08881-000	235	Bare	78-1/8"	5/8"	007-08485-000
160	Bare	007-08882-000	333	Bare	007-08882-000	305	Bare	78-1/8"	5/8"	007-08485-000
160	Bare	007-08883-000	333	Bare	007-08883-000	305	Bare	78-1/8"	5/8"	007-08485-000

CONDENSATE DRAIN COOLERS

UNIT MODEL NUMBER	OVERALL LENGTH	PED	STD.	PART NUMBER
14SC, 16SL, 17S	74.8 INCHES		X	026-36799-001
18S & 19S	98.42 INCHES		X	026-36799-002
14SC, 16SL, 17S	74.80 INCHES	X		026-36799-003
18S & 19S	98.42 INCHES	X		026-36799-004

NOTES:

1. All drain coolers are ASME "U" code stamped, tubes are 5/8" OD, spirally fluted, 90/10 CuNi.
2. PED is compliant to the European Pressure Equipment Directive.
3. Condensate drain cooler tube material is 90/10 CuNi, tubes can not be replaced.

CHEMICALS AND COMPOUNDS

ITEM DESCRIPTION	PART NUMBER
ADVAguard 750A SOLUTION, 1/2 gallon bottle	011-00931-000
ADVAguard 750A SOLUTION, 1 gallon bottle	011-00932-000
ADVAguard 750B POWDER, 50 gram container ²	011-00933-000
ADVAguard 750B POWDER, 100 gram container ²	011-00934-000
ADVAguard 750B POWDER, 500 gram container ²	011-00935-000
REFRIGERANT, de-ionized water, 55 gallon drum	011-00548-000
LITHIUM BROMIDE SOLUTION, ADVAGuard 750 Inhibited, 30 gallon drum	011-00903-000
LITHIUM BROMIDE SOLUTION, Molybdate Inhibited, in 30 gallon drum	011-00556-000
LITHIUM BROMIDE SOLUTION, Un-inhibited, 30 gallon drum ¹	011-00940-000
LITHIUM MOLYBDATE INHIBITOR, powder, 1lb. bottle	011-00557-000
LITHIUM MOLYBDATE INHIBITOR, Liquid, 1 pint bottle (equals 0.4 lb of Molybdate powder)	011-00905-000
LITHIUM NITRATE INHIBITOR, powder, 1 lb. bottle	011-00524-002
LITHIUM NITRATE INHIBITOR, Liquid, 1 gallon bottle (equals 3 lbs. Nitrate powder)	011-00906-000
LITHIUM HYDROXIDE MONOHYDRATE, powder, 5 lbs.	044-02985-000
ALCOHOL, (2-Ethyl-1-Hexanol), 5 gallon pail	011-00524-003
BENZOTRIAZOLE COMPOUND (BZT), (Steam units only)	013-02890-000
ADHESIVE, GASKET, 5 oz. tube (for Water Box Gaskets)	013-00995-000
CLEANER, Loctite 7070	013-02899-000
PRIMER (Loctite Primer "N" 7649), 1.76 oz. bottle	013-01753-000
SEALER, Loctite grade AVV 086 (for studs in tubesheets)	013-01671-000
SEALER, Loctite grade AV087 (rolling tubes in Absorber, Evap. Cond. and Low Temp Generator)	013-01046-000
SEALER, Loctite grade AA089 (for rolling tubes in first stage generator)	013-02998-000
SEALER, Loctite grade 620 (carbon wear rings on new style pumps)	013-03026-000
THREAD SEALANT, Carbon Steel Threads (Loctite 565) 250 mL Tube	013-02023-000
THREAD SEALANT, Loctite 567, (for stainless steel threads) 8.45 oz. tube	013-02280-000
VACUUM SEALANT, 4 oz. can	013-02882-003
VACUUM GREASE, Dow Corning high vacuum, 5.3 oz. tube	011-00901-000
HEAT CONDUCTIVE COMPOUND, 16 oz. can (Loctite Anti-Seize 767) high temp. areas of unit	013-03083-000
HEAT CONDUCTIVE COMPOUND, 4 oz. can (for thermowells in low temp. areas of unit)	013-00898-000
ANTI-SEIZE COMPOUND, (Loctite C5-A), 2-1/2 lb. can	013-01690-000
VACUUM PUMP OIL, 1 gallon bottle	011-00524-004
PAINT, Caribbean Blue touch-up, 16 oz. aerosol can	013-01835-000

NOTES:

1. Uninhibited solution requires inhibitors, please order appropriate inhibitor.
2. Purchase only what is required to make the chemical corrections. Once the container is open, there is no shelf life.

INHIBITOR	CONC.
NITRATE	53%
MOLYBDATE	55%
ADVAguard	53%

YORK SERVICE TOOLS AND APPARATUS

ITEM DESCRIPTION	PART NUMBER
500 ML POLYPROPYLENE HYDROMETER FLASK	044-02982-000
REFRIGERANT REMOVAL TANK, INCLUDES HOSE (5/8" ID X 1.024" OD) AND CLAMPS	026-32007-002
ALLEN WRENCH, 22MM (FOR 1-1/2" SPINDLE VALVES)	029-20981-000
TUBING, VACUUM PUMP, CLEAR REINFORCED , 3/4" ID X 1.024" OD	028-13535-000
TUBING, VACUUM SAMPLE FLASK, CLEAR, 1/4" ID X 5/8" OD	028-12514-000
TUBING, BUBBLE LEAK CHECK, CLEAR, 1/4" ID X 3/8" OD (NOT FOR VACUUM PURPOSES)	028-10605-000
AMMONIA AND ALKALINE SOLUTION TEST KIT (SEE NOTES FOR CONTENTS)	026-32824-000
THERMOMETER 0-230°F, 12 INCH (SPRIT FILLED)	026-32364-000
THERMOMETER 0-500°F, 15 INCH (SPRIT FILLED)	026-32365-000
HYDROMETER KIT, CASE AND SET OF 8 HYDROMETERS (CONTAINS 1-8 BELOW)	026-32366-000
1. HYDROMETER, .700 TO .810 SPECIFIC GRAVITY	026-32366-001
2. HYDROMETER, .800 TO .910 SPECIFIC GRAVITY	026-32366-002
3. HYDROMETER, .900 TO 1.010 SPECIFIC GRAVITY	026-32366-003
4. HYDROMETER 1.000 TO 1.220 SPECIFIC GRAVITY	026-32366-004
5. HYDROMETER 1.200 TO 1.420 SPECIFIC GRAVITY	026-32366-005
6. HYDROMETER 1.400 TO 1.620 SPECIFIC GRAVITY	026-32366-006
7. HYDROMETER 1.600 TO 1.820 SPECIFIC GRAVITY	026-32366-007
8. HYDROMETER 1.800 TO 2.000 SPECIFIC GRAVITY	026-32366-008
SPINDLE VALVE ADAPTER	922-08869-001
SOLUTION SAMPLE KIT (LITHIUM BROMIDE)	028-15065-000

NOTES:

Contents of 026-32824-000 Ammonia & Alkaline Solution Test Kit

- 1 - Plastic carrying case with handle & insert
- 1 - Instruction sheet with MSDS's
- 1 - Deionized water, 16 oz.
- 1 - Hydrochloric acid, 2 oz.
- 1 - Phenolphthalein, 1%, 2 oz.
- 2 - Vial with cap, 0-50 ml
- 1 - Filter paper #610, 12.5 cm
- 1 - Flask, 125 ml
- 1 - Funnel, plastic, 75 mm
- 1 - Piper, calibrated, 1 ml
- 1 - Syringe, 1.0 cc
- 1 - Squirt bottle for DI water
- 1 - Ammonia Nitrogen Color Block
- 1 - Ammonia Nitrogen Reagent #1, 1 oz.
- 1 - Ammonia Nitrogen Reagent #2, 1 oz.
- 2 - Color comparator tube with cap

NON-YORK SERVICE TOOLS

In addition to the above, some additional non-YORK service tools are required to be purchased independently.

- High intensity flashlight, such as the AA Mini Maglite.
- 10 mm and 3/8" Allen wrench
- 17 mm and 5/8" Allen wrench
- Vacuum flask: order a qty. of one from either of the below companies:
Cole-Parmer, Catalog. No. E-06110-10. Phone 1-800-323-4340
BEL ART Products, Catalog No. 19953-0000. Phone (201) 694-0500
- Hydrometer Flask, **Optional purchase**, this flask is only 250 mL in size and is convenient to use with the BEL ART Vacuum Flask.
Order Cole-Parmer, Cat. No. P-06652-00 (Gas Washing Bottle).
- Infrared Thermometer, such as the Exergen Microscanner D501. Phone 1-800-422-3006.
- Small utility pump (such as the TEEL 1/2 HP portable, self-priming pump, Grainger Cat. No. 2P110A, or
TEEL IP5Y9F, 1/10 HP Self-Priming Marine Utility Pump [fits in hand])
- Barbed fittings 1/4" NPT to 1/4" hose
- Plastic buckets 2-1/2 gallon size
- Plastic garbage cans approx. 30 gallon size
- Combustion Analysis tools: Water Manometer and Combustion Analyzer.
- Accurate digital Multimeter such as the Fluke 87
- Mixed bed de-ionizer (can be rented through local water treatment company)
- Rubber gloves
- Apron
- Safety glasses
- Solution Sample Kits (can be purchased through Rocky Research, phone (702) 293-0851.
- Motor Rotation detector, Bell & Gossett No. S12908
- Solution Filter, US Filters model no. 6FM01A-21P (1-800-345-8377)
- Solution Filter, order Filterite Poly-Fine ARD cartridges w/EPDM gaskets.

NOTE:

YORK recommends a High-Temperature Epoxy for installing insulation or insulation pins to the first stage generator. There is no YORK part number for this product; it can be obtained via the McMaster-Carr catalog. product no. 7563A24, for a one pint can or 7563A26 for a one gallon can.

GLOBE VALVE TEFLON CAP O-RINGS MCMaster-CARR

YORK GLOBE VALVE PART NUMBER	VALVE SIZE	O-RING I.D.	O-RING O.D.	MCMaster-CARR	
				DASH NO.	CAT. NUMBER
022-08869-051	1"	1-5/16"	1-1/2"	219	9559K41
022-08869-028	1-1/2"	1-5/16"	1-1/2"	219	9559K41
022-08869-030	2"	1-3/8"	1-5/8"	220	9559K42
022-08869-031	2-1/2"	1-9/16"	1-3/4"	222	9559K44
022-08869-032	3"	1-3/4"	2"	225	9559K1-225
022-08869-033	4"	2-1/16"	2-1/16"	225	9559K1-225

SYSTEM GASKETS

ITEM DESCRIPTION	PART NUMBER	
	Direct-Fired Units	Steam Units
GASKET, BUFFALO SOLUTION PUMP 3-INCH SUCTION (12SC THROUGH 15S UNITS)	075-24300-000	075-24300-000
GASKET, BUFFALO SOLUTION PUMP 2-INCH DISCHARGE (12SCV THROUGH 15S UNITS)	075-24092-000	075-24092-000
GASKET, BUFFALO SOLUTION PUMP SUCTION AND DISCHARGE (15SL AND 16S)	075-24300-000	075-24300-000
GASKET, VP7 FLANGE (BLACK NEOPRENE)	075-24091-000	075-24091-000
GASKET, PURGE FLANGE (BLACK NEOPRENE)	075-23414-000	075-23414-000
STEAM CONDENSATE DRAIN LINE FLANGE GASKET 3/4" LINE (14SC THROUGH 17S UNITS)	N/A	028-10386-002
STEAM CONDENSATE DRAIN LINE FLANGE GASKET 1" LINE (18S THROUGH 19S UNITS)	N/A	028-10386-003
GASKET, BUFFALO PUMP MODEL P8-106 CASING (50 AND 60 HZ PUMPS)	028-12913-000	028-12913-000
GASKET, BUFFALO PUMP MODELS 66M-709 AND 66R-709 CASING (50 & 60 HZ PUMPS)	028-12700-000	028-12700-000
GASKET, BUFFALO PUMP MODELS 66R-709/609 & 66V-709/609 CASING (50 & 60 HZ PUMPS) (INCLUDES ONE "O"-RING TYPE AND ONE FLAT TYPE GASKET) (USE APPROPRIATE TYPE GASKET AS FOUND IN PUMP CASING)	028-12914-000	028-12914-000
GASKET, BUFFALO PUMP MODELS 215ZB-8011 & 215R-8011 (50 & 60 HZ PUMPS)	028-12599-000	028-12599-000
GASKET FOR OLD STYLE 4" CARBON DISK (P/N INCLUDES TWO GASKETS)	026-33818-000	026-33818-000
GASKET FOR OLD STYLE 6" CARBON DISK (P/N INCLUDES TWO GASKETS)	026-33819-000	026-33819-000

CROSS OVER LINE PIPING GASKETS (If York Supplied Crossover Line)

CROSSOVER LINE SIZE	YORK PART NUMBER
8"	028-10386-013
10"	028-10386-014
12"	028-10386-015

BY-PASS LINE PIPING GASKETS (Fits 150 lb. Compact and Marine Water Boxes)

BY-PASS LINE SIZE	YORK PART NUMBER
3"	028-10386-008
4"	028-10386-010
5"	028-10386-011
6"	028-10386-012

GASKETS

UNIT WATER BOXES FOR STEAM AND DIRECT-FIRED UNITS

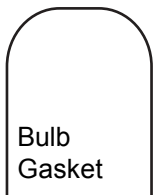
UNIT MODEL	PASS	EVAPORATOR BUNDLE					
		COMPACT WATER BOXES		MARINE WATER BOXES			
				FRONT BOX (Box w/ Nozzles)		RETURN BOX' (Box w/o Nozzles)	
		PART NUMBER	QTY. (FT.)	PART NUMBER	QTY. (FT.)	PART NUMBER	QTY. (FT.)
12SC, 13S, 13SC, 14S	1	—	—	—	—	—	—
	2	028-03242-000	16.5	028-03242-000	26	075-15448-000	1
	3	028-03242-000	16.5	028-03242-000	36	—	—
	4	028-03242-000	16.5	028-03242-000	26	075-15448-000	1
14SC, 15S	1	—	—	—	—	—	—
	2	028-03242-000	16.5	028-03242-000	26	075-15448-000	1
	3	028-03242-000	16.5	028-03242-000	36	—	—
	4	028-03242-000	16.5	028-03242-000	26	075-15448-000	1
15SL, 16S	1	—	—	—	—	—	—
	2	028-03242-000	22	028-03242-000	30	075-16563-000	1
	3	028-03242-000	22	028-03242-000	40	—	—
	4	028-03242-000	22	028-03242-000	30	075-16563-000	1
16SL, 17S 18S	1	—	—	—	—	—	—
	2	028-03242-000	22	028-03242-000	30	075-16563-000	1
	3	028-03242-000	22	028-03242-000	40	—	—
	4	028-03242-000	22	028-03242-000	30	075-16563-000	1
19S	1	—	—	—	—	—	—
	2	028-03242-000	22	028-03242-000	30	075-16563-000	1
	3	028-03242-000	22	028-03242-000	40	—	—
	4	028-03242-000	22	028-03242-000	30	075-16563-000	1

GASKETS

MISCELLANEOUS WATER BOX GASKETS

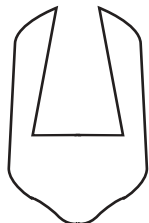
UNIT MODEL	ITEM DESCRIPTION	PART NUMBER
ALL	Gasket, Pass Baffle, 50-Foot Roll (fits all water box pass baffles in all bundles) (New Style with narrow rib on tip) (Order either 25 or 50 foot)	028-08547-000
ALL STEAM UNITS	Gasket, First-Stage Generator Head (Gore-Tex Joint Sealant, 1/4" Thick, 50 foot Roll)	028-12908-000

Channel Gasket

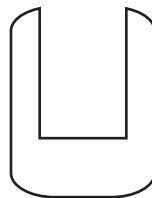


Bulb
Gasket

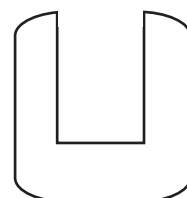
028-03242-000
fits into groove



028-08547-000
fits over baffle



028R00949-000
150# design



028R00950-000
300# design

ABSORBER/CONDENSER BUNDLE							HOT WATER HEATER	
COMPACT WATER BOXES		MARINE WATER BOXES					HEATER WATER BOX (HI-TEMP DIRECT-FIRED UNITS ONLY)	
		FRONT BOX (Box w/ Nozzles)		RETURN BOX ¹ (Box w/o Nozzles)				
PART NUMBER	QTY. (FT.)	PART NUMBER	QTY. (FT.)	PART NUMBER			PART NUMBER	QTY.
				ABSORBER	CONDENSER	QTY.		
028-03242-000	28	028-03242-000	32	075-15614-000	---	1	---	-
028-03242-000	28	028-03242-000	53	---	---	-	075-17433-000	2
028-03242-000	28	028-03242-000	32	075-15614-000	---	1	075-17433-000	2
---	-	---	-	---	---	-	075-17433-000	2
028-03242-000	28	028-03242-000	32	075-15614-000	---	1	---	-
028-03242-000	28	028-03242-000	53	---	---	-	075-17433-000	2
028-03242-000	28	028-03242-000	32	075-15614-000	---	1	075-17433-000	2
---	-	---	-	---	---	-	075-17433-000	2
---	-	---	-	---	---	-	---	-
028-03242-000	32	028-03242-000	54.5	075-16307-000	075-16177-000	1 ea.	075-17465-000	2
028-03242-000	32	028-03242-000	65.5	---	---	-	075-17465-000	2
---	-	---	-	---	---	-	075-17465-000	2
---	-	---	-	---	---	-	075-17465-000	2
028-03242-000	32	028-03242-000	54.5	075-16307-000	075-16177-000	1 ea.	075-17465-000	2
028-03242-000	32	028-03242-000	65.5	---	---	-	075-17465-000	2
---	-	---	-	---	---	-	---	-
028-03242-000	32	028-03242-000	65.5	---	---	-	075-17465-000	2
028-03242-000	32	028-03242-000	54.5	075-16307-000	075-16177-000	1 ea.	075-17465-000	2
028-03242-000	32	028-03242-000	65.5	---	---	-	075-17465-000	2
---	-	---	-	---	---	-	---	-

NOTES:

1. Only order these gaskets if unit was built prior to April 1999. For units built after April 1999, order the 028-03242-000 bulb gasket at the specified quantity.
2. All part class "075" gaskets are 3/16" thick Ethylene Propilene.
3. Pass baffle gaskets are Durometer 70, Buna-N.
4. 028-03242-000 bulb gasket is Durometer 70, Neoprene.

RUPTURE DISKS AND HOLDERS

UNIT MODEL	SIZE	BURST RATING	DESCRIPTION	PART NUMBER
12SC-17S	1-1/2"	7 psig, +/- 2 psi	Rupture disk, metallic 316 stainless steel, armored, ASME certified.	026-37940-000
		N/A	Flange assembly, carbon steel, 150# ANSI rated. 1-1/2" butt weld connection on process side, 1-1/2" NPTI on relief side. Includes nuts and bolts.	026-37941-000
18S & 19S	2"	7 psig, +/- 2 psi	Rupture disk, metallic 316 stainless steel, armored, ASME certified.	026-37942-000
		N/A	Flange assembly, carbon steel, 150# ANSI rated. 2" butt weld connection on process side, 2" NPTI on relief side. Includes nuts and bolts.	026-37943-000
All S-Model units built between May 1996 and March 2002	4"	12 psig, +/- 2 psi	Rupture disk, metallic 316 stainless steel, armored, ASME certified. Includes safety wire and tamperproof tabs.	026-36157-000
		N/A	Flange assembly, carbon steel, 150# ANSI rated. 4" butt weld connection on process side, 4" NPTI on relief side. Includes cap screws.	026-36158-000
All S-model units built before May 1996	4"	7 psig, +/- 0.75 psi	Rupture disk, carbon. PTFE coated on process side; FEP liner on relief side. Disk comes with EPDM gaskets attached on both sides. Mounts between standard 150# rated ANSI flanges - obtain locally.	026-32007-015
All G-model units built after May 1996	6"	12 psig, +/- 2 psi	Rupture disk, metallic 316 stainless steel, armored, ASME certified. Includes safety wire and tamperproof tabs	026-36159-000
		N/A	Flange assembly, carbon steel, 150# ANSI rated. 6" butt weld connection on process side, 6" NPTI on relief side. Includes cap screws.	026-36160-000
All G-model units built before May 1996	6"	7 psig, +/- 0.75 psi	Rupture disk, carbon. PTFE coated on process side; FEP liner on relief side. Disk comes with EPDM gaskets attached on both sides. Mounts between standard 150# rated ANSI flanges - obtain locally.	026-32007-016

NOTES:

- The 4 & 6 inch metallic rupture disks may be used as an upgrade for the 2 respective carbon disks when upgrading. Also order the flange assembly.
For upgrading, the original standard unit flanges will need to be removed and replaced by the flange assembly and metallic rupture disk.
- See System Gaskets for old style rupture disk gaskets.

MISCELLANEOUS COMPONENTS

ITEM DESCRIPTION	PART NUMBER
SMART PURGE FIELD RETROFIT KIT ¹	325-32967-000
FLOW SWITCH, FOR USE WITH 150# DWP WATER BOXES ²	024-26116-000
FLOW SWITCH FOR USE WITH 300# DWP WATER BOXES	024-12144-000
CONTROL, DIFFERENTIAL PRESSURE SWITCH	025-30919-000
SIGHT GLASS, 2 INCH THREADED	026-18004-000
ABSOLUTE PRESSURE GAUGE, GLASS MERCURY-FILLED U-TUBE MANOMETER, 5" STD. CM/MM, GAUGE RANGE 0 TO 127MM	026-09261-000
ABSOLUTE PRESSURE GAUGE, DIAL TYPE (NON-MERCURY), GAUGE RANGE 0 TO 40MM	026-32396-000
GAUGE, COMPOUND, 4" DIAL, GAUGE RANGE -760MM HG TO 15PSIG (PI-1)	026-34443-000
GAUGE, COMPOUND, 3-1/2 INCH DIAL, GAUGE RANGE 30" VACUUM TO 300# PSIG (STEAM PRESSURE, STEAM UNITS ONLY)	026-03952-000
SIPHON (USED IN CONJUNCTION WITH ABOVE STEAM PRESSURE GAUGE)	026-28384-000
TEE, 1/2 INCH THREADED, CARBON STEEL	023-11329-000
TEE, 3/4 INCH THREADED, CARBON STEEL	023-11331-000
MICRO PANEL HEAT SHIELD	075-17162-000
POWER PANEL HEAT SHIELD	075-17163-000
THERMOWELL FOR ABSORBER, EVAPORATOR & CONDENSER (NOT GENERATOR)	026-32328-000
PIPE, CPVC 4" SCH 80 x 6-3/8" LONG 4 - 8 NPTE ONE END	028-12904-000

NOTES:

1. SmartPurge Retrofit Kit includes:
 - * All hardware and components (1SOL, 2SOL & PT-3) to modify purge piping.
 - * Transducer PT-4. If unit does not have the purge tank isolation valve for PT-4, one will need to be installed. Materials for this purpose must be purchased separately.
 - * Thermistor RT-12. If unit does not have the thermowell for RT-12, one will need to be installed.
 - * Components to modify MicroPanel for Auto-Purge and Crystallization Cutout Safety feature. Including latest EPROM version.
 - * Some additional items and welding will be required to install the SmartPurge Retrofit Kit. See Field Retrofit Instructions for a complete list.
2. Flow Switch can be used for either evaporator, condenser, or Hi-temp. aux. heat exchanger water loops.

FLOAT VALVES

UNIT SIZE	HIGH TEMP. GENERATOR FLOAT	REFRIGERANT FLOAT
DIRECT-FIRED UNITS		
12SC THRU 15S	075-12170-000	075-12036-000
15SL THRU 19S	075-04398-000	075-16391-000
STEAM-FIRED UNITS		
12SC THRU 15S	075-24332-000	075-12036-000
15SL THRU 19S	075-16836-000	075-16391-000

NOTES:

All float valves are an assembly of: flapper valve, arm, stopper (when applicable), and float ball.

RECOMMENDED SPARE PARTS LIST

It is recommended that certain parts be stocked by the customer to facilitate prompt service in the event of a component failure. Spare parts will, of course, depend upon the degree of self-sufficiency required by the building owner. Larger cost items such as pump repair kits should be stocked only if there is no chiller redundancy at the site.

The table below includes parts recommended by YORK to sufficiently service the unit under normal circumstances.

PREVENTATIVE, REGULAR AND SCHEDULED MAINTENANCE SPARE PARTS

ITEM	DESCRIPTION	QTY.	PART NUMBER	COMMENTS
1	GASKET, WATER BOX	—	VARIABLE	See Gasket section for applicable gaskets
2	ADHESIVE FOR WATER BOX GASKETS	1	013-00995-000	5 oz. tube
3	GASKET, EVAP. PASS BAFFLE	25'	028-08547-000	Units with Multiple pass boxes only
4	INHIBITOR, POWDER (SEE NOTES)			
5	INHIBITOR, LIQUID			
8	HYDROMETER KIT, CASE AND SET OF 8 HYDROMETERS	1	026-32366-000	See Service Tools Section for contents of kit
9	CLEANER, LOCTITE 7070	1	013-02899-000	16 fl. oz. aerosol can
10	PRIMER, LOCTITE "PRIMER N 7649"	1	013-01753-000	1.76 oz. bottle
11	PIPE THREAD SEALANT, LOCTITE 567	1	013-02280-000	8.45 oz. tube
12	VACUUM GREASE, DOW CORNING HIGH VACUUM	1	011-00901-000	5.3 oz tube
13	VACUUM SEALANT	1	013-02882-003	4 oz. can with brush
14	HEAT CONDUCTIVE COMPOUND (FOR LOW TEMP. THERMOWELLS)	1	013-00898-000	4 oz. can
15	HEAT CONDUCTIVE COMPOUND (FOR HIGH TEMP. THERMOWELLS)	1	013-03083-000	16 oz. can
16	VACUUM PUMP OIL	5	011-00524-004	1 gallon container
17	REPLACEMENT O-RING KIT FOR SPINDLE VALVES	1	028-12271-002	for 1/2" spindle valves
18	REPLACEMENT O-RING KIT FOR SPINDLE VALVES	1	028-12271-003	for 1" spindle valves
19	REPLACEMENT O-RING KIT FOR SPINDLE VALVES	1	028-12271-004	for 1-1/2" spindle valves
21	IC, REAL TIME CLOCK - U16	1	031-00955-000	
22	REPLACEMENT NEOPRENE DIAPHRAGM	1	022-09126-000	for 1/2" diaphragm valve

NOTES:

- 1) Purchase appropriate type of inhibitor for your unit only. See Chemicals and Compounds Section of this manual.

RECOMMENDED EMERGENCY SPARE PARTS LIST

The table below is parts recommended by YORK for Emergency chiller failures. The parts listed are for electrical and general chiller repairs in the event the chiller goes off line and needs to be repaired as soon as possible.

EMERGENCY SPARE PARTS

ITEM	DESCRIPTION	QTY.	PART NUMBER	COMMENTS
1	TEMPERATURE SENSOR, 50K (FOR HIGH TEMP. AREAS OF UNIT)	1	025-29924-000	HTG and solution/dilution
2	TEMPERATURE SENSOR, 3K (LOW TEMP AREAS OF UNIT)	1	025-29964-000	Evap & Cond water Ref. temp
3	PRESSURE TRANSDUCER	1	025-29907-001	PT1
4	FUSE	1	025-29905-000	7 amp (1FU)
5	I/O EXPANSION BOARD	1	031-01301-001	
6	POWER SUPPLY BOARD	1	031-01080-000	
7	MICRO BOARD	1	031-01065-002	Eprom not included
8	RELAY BOARD	1	031-01199-000	
9	DIGITAL INPUT BOARD (NOTE 1)	1	031-01621-001	Standard
10	DIGITAL INPUT BOARD (NOTE 2)	1	031-01621-002	VDE
11	RUPTURE DISK (NOTE 3)	1	VARIABLE	
12	NEW MOTOR WITH PUMP REPAIR KIT (NOTE 4)	1	VARIABLE	
13	YORK VACUUM PUMP MODEL 1400 V-BELT (SIZE 4L340)	1	028-14422-000	208-230/460/3/60 HZ
14	YORK VACUUM PUMP MODEL 1400 V-BELT (SIZE 4L350)	1	028-14423-000	380/3/50 HZ

NOTES:

1. Standard wiring.
2. VDE, (Germany Wiring Code) order only if chiller meets VDE code.
3. Older model units use a carbon type rupture disk mounted between standard flanges:
 4 inch 026-32007-015, replacement gaskets 026-33818-000 (torque 20 ft./lbs.).
 6 inch 026-32007-016, replacement gaskets 026-33819-000 (torque 20 ft./lbs.).
 The carbon type rupture disk will need to be replaced every three years as it becomes porous over time. Therefore, it is highly recommended by YORK to upgrade the unit rupture disks to metallic. These disks do not require a routine change out and no gaskets are required for installation. However, some unit cutting and welding will be required due to special flanges are needed.
4. Pump repair kits are available to fix virtually any pump problem that may be encountered. It is recommended that a new motor with pump repair kit be available on site for each type of pump located on the unit. Smaller units will have only two pumps while larger units will have four. New motor with pump repair kits are listed in this form for new style pumps. A kit, contents listing of what comes with each kit is also listed. If two or more pumps on the same unit have the same kit number, stock only one kit.

UNIT SHIP LOOSE PARTS

The following tables are typical items that are shipped loose with each unit. Find the table with the heading that matches your unit for an itemized list of what should be included but shipped separately with the unit. The tables do not reflect any special items or additional accessories that may have been included with the Factory Order.

If any items are missing contact the factory, Customer Service dept.

Sometimes Lithium Bromide Solution, Refrigerant, and Alcohol are shipped separate from the unit. See Factory Order Sheet to determine if these items are shipped loose.

UNIT SHIP LOOSE PARTS FOR 50*HZ AND 60*HZ DIRECT FIRED UNITS

PART NO.	SUB-ITEM PART NO.	DESCRIPTION	QTY	UOM
375-06554-000	—	KIT, ABSOLUTE PRESSURE GAUGE (MANOMETER)	1	EA.
—	026-09261-000	MANOMETER PRESSURE GAUGE 5" CM/MM MERCURY FILLED	1	EA.
—	028-12514-000	VACUUM TUBING 1/4" I.D. X 3/8" WALL (TYGON)	4	FT.
—	023-16945-000	NIPPLE 1/4" NPTE X 1/4" HOSE BARB	2	EA.
—	023-10280-000	HOSE CLAMP 1/4" MINIMUM DIA.	2	EA.
—	021-03835-000	MACHINE SCREW SLOTTED FLAT HEAD #10	2	EA.
—	021-00435-000	HEX NUT #10	2	EA.
—	023-04039-000	PIPE BUSHING 3/4-14 NPTE X 1/4" NPTI	1	EA.
023-04685-000	—	PIPE BUSH FACE 1/2 - 14 NPTE X 1/4 - 18 NPTI	1	EA.
023-08856-000	—	HOSE CLAMP 11/16" MINIMUM DIA.	2	EA.
021-12930-000	—	HOSE CLAMP 1-1/16" MINIMUM DIA.	2	EA.
375-19010-000	—	LEAK TEST KIT	1	EA.
—	044-02982-000	POLYPROPYLENE HYDROMETER CYLINDER	1	EA.
—	022-08885-001	BALL VALVE 1/4" NPTI	1	EA.
—	022-08885-005	BALL VALVE 1/2" NPTI	1	EA.
—	023-14616-000	PIPE NIPPLE 1/2" SCHEDULE 40 CLOSE	2	EA.
—	023-03986-000	PIPE BUSHING 1/2 - 14 NPTE X 1/4 - 18 NPTI	1	EA.
—	023-11329-000	TEE SCREW 1/2 NPTI X 1/2 NPTI X 1/2 NPTI #300 LB.	1	EA.
—	023-04320-000	45 DEGREE ELBOW SCREW 1/2 NPTI X 1/2 NPTI	2	EA.
—	023-14611-000	PIPE NIPPLE 1/2 - 14 (SCHEDULE 40) NPTE X 4" LONG	1	EA.
—	028-10605-000	PLASTIC TUBE 3/8" O.D. X 1/4" I.D.	4	FT.
—	023-10280-000	HOSE CLAMP 1/4" MINIMUM DIA.	1	EA.
023-18224-000	—	HOSE BARB 1/2" NPTE X 3/4" HOSE BARB	1	EA.
028-13535-000	—	HOSE 3/4" I.D. X 1.024" O.D.	5	FT.
026-33637-000 ¹	—	VACUUM PUMP, 60HZ, MODEL 1400 (0.9 CFM) 60HZ UNITS ONLY	1	EA.
026-33832-000 ¹	—	VACUUM PUMP, 50HZ, MODEL 1400 (0.9 CFM) 50HZ UNITS ONLY	1	EA.
026-32007-002	—	REFRIGERANT REMOVAL TANK WITH 5/8 ID HOSE AND CLAMPS	1	EA.
035-12629-000	—	LABEL SHIP LOOSE PACKAGING	1	EA.
335-12694-003	—	LABEL VALVE DESIGNATIONS	1	EA.
035-14002-000	—	LABEL TAG DESIGNATIONS	1	EA.
013-01835-000	—	ENAMEL SPRAY PAINT CARIBBEAN BLUE	1	EA.
922-08869-001	—	SAMPLE VALVE ADAPTER	1	EA.
THE BELOW ITEMS ARE NOT INCLUDED IN KIT BUT ARE SHIPPED WITH EACH UNIT				
024-26116-000 ²	—	CHILLED WATER FLOW SWITCH (STANDARD 150# DWP WATER BOXES)	1	EA.
029-22435-00X ³	—	BURNER DAMPER ASSEMBLY WITH FGR CONNECTION	1	EA.

NOTES:

- * 50 Hz Kits, part number 475-16235-001; 60 Hz Kits, part number 475-16235-000.
- 1. One vacuum pump shipped per unit, part number dependent upon unit Hertz.
- 2. One switch is included with each unit for chilled water flow. A condenser or Hot water flow switch can be supplied as an extra accessory to the factory order. Also available are 300# DWP flow switches and Differential Pressure switches.
- 3. 029-22435-001 – unit models 12SC thru 14S
 029-22435-002 – unit models 14SC and 15S
 029-22435-003 – unit models 15SL and 16S
 029-22435-004 – unit models 16SL and 17S
 029-22435-005 – unit models 18S and 19S

UNIT SHIP LOOSE PARTS (CONT'D) TYPICAL BURNER SHIP LOOSE ITEMS

PART NO.	DESCRIPTION	QTY.	UOM
SEE BURNER SPECIFICATION SHEET	THERMOCOUPLE, PROBE WITH JUNCTION BOX - 1/8" NPTE	1	EA.
SEE BURNER SPECIFICATION SHEET	WIRE, THERMOCOUPLE - J-TYPE	50	FT.
SEE BURNER SPECIFICATION SHEET	TUBING, ALUMINUM, COIL FOR PILOT GAS	6	FT.
SEE BURNER SPECIFICATION SHEET	FLAME SAFEGUARD	1	EA.
SEE BURNER SPECIFICATION SHEET	AMPLIFIER	1	EA.
SEE BURNER SPECIFICATION SHEET	PURGE TIMER	1	EA.
SEE BURNER SPECIFICATION SHEET	GAS TRAIN	1	EA.
SEE BURNER SPECIFICATION SHEET	PUMP, OIL WITH DRIVE MOTOR	1*	EA.
SEE BURNER SPECIFICATION SHEET	FILTER, OIL	1*	EA.
SEE BURNER SPECIFICATION SHEET	GAUGE, OIL PRESSURE	1*	EA.

NOTE:

* Only supplied with gas / oil dual fuel burners.

YORK VACUUM PUMP SHIP LOOSE PARTS

WELCH PART NO.	DESCRIPTION	QTY.	UOM
1407K-11	DUOSEAL VACUUM PUMP OIL	1	QT.
61-8503A	BLACK PIPE MALE TO MALE ADAPTER, 3/4"-20 x 1/2" NPTE	1	EA.
67-0607	OWNER'S MANUAL	1	EA.
41-1345 ³	DISCHARGE PORT DUST CAP (3/4"-20 THREADS)	1	EA.

NOTES:

1. Above parts are applicable for both 50 and 60 Hz pumps.
2. Gas ballast piping is already installed on pump from the factory.
3. This item is not required for pump operation and may not be included with all pumps.

UNIT SHIP LOOSE PARTS FOR 50*HZ AND 60*HZ STEAM FIRED UNITS WITH MERCURY MANOMETER

PART NO.	SUB-ITEM PART NO.	DESCRIPTION	QTY.	UOM
375-06554-000	—	KIT, ABSOLUTE PRESSURE GAUGE (MANOMETER)	1	EA.
—	026-09261-000	MANOMETER PRESSURE GAUGE 5" CM/MM MERCURY FILLED	1	EA.
—	028-12514-000	VACUUM TUBING 1/4" I.D. X 3/8" WALL (TYGON)	4	FT.
—	023-16945-000	NIPPLE 1/4" NPTE X 1/4" HOSE BARB	2	EA.
—	023-10280-000	HOSE CLAMP 1/4" MINIMUM DIA.	2	EA.
—	021-03835-000	MACHINE SCREW SLOTTED FLAT HEAD #10	2	EA.
—	021-00435-000	HEX NUT #10	2	EA.
—	023-04039-000	PIPE BUSHING 3/4-14 NPTE X 1/4" NPTI	1	EA.
023-08856-000	—	HOSE CLAMP 11/16" MINIMUM DIA.	2	EA.
375-19010-000	—	LEAK TEST KIT	1	EA.
—	044-02982-000	POLYPROPYLENE HYDROMETER CYLINDER	1	EA.
—	022-08885-001	BALL VALVE 1/4" NPTI	1	EA.
—	022-08885-005	BALL VALVE 1/2" NPTI	1	EA.
—	023-14616-000	PIPE NIPPLE 1/2" SCHEDULE 40 CLOSE	2	EA.
—	023-03986-000	PIPE BUSHING 1/2 - 14 NPTE X 1/4 - 18 NPTI	1	EA.
—	023-11329-000	TEE SCREW 1/2 NPTI X 1/2 NPTI X 1/2 NPTI #300 LB.	1	EA.
—	023-04320-000	45 DEGREE ELBOW SCREW 1/2 NPTI X 1/2 NPTI	2	EA.
—	023-14611-000	PIPE NIPPLE 1/2 - 14 (SCHEDULE 40) NPTE X 4" LONG	1	EA.
—	028-10605-000	PLASTIC TUBE 3/8" O.D. X 1/4" I.D.	4	FT.
—	023-10280-000	HOSE CLAMP 1/4" MINIMUM DIA.	1	EA.
375-06889-000	—	GAUGE KIT	1	EA.
—	026-03952-000	3-1/2" DIAL COMPOUND GAUGE , STEAM PRESSURE	1	EA.
—	026-28384-000	SIPHON, ASHCROFT (TO BE USED WITH ABOVE COMPOUND GAUGE)	1	EA.
—	023-11103-000	1/4 -18 NPTI PIPE COUPLING	1	EA.
023-18224-000	—	HOSE BARB 1/2" NPTE X 3/4" HOSE BARB	1	EA.
028-13535-000	—	HOSE 3/4" I.D. X 1.024" O.D.	5	FT.
026-33637-000 ¹	—	VACUUM PUMP, 60HZ, MODEL 1400 (0.9 CFM) 60HZ UNITS ONLY	1	EA.
026-33832-000 ¹	—	VACUUM PUMP, 50HZ, MODEL 1400 (0.9 CFM) 50HZ UNITS ONLY	1	EA.
026-32007-002	—	REFRIGERANT REMOVAL TANK WITH 5/8 ID HOSE AND CLAMPS	1	EA.
035-12629-000	—	LABEL SHIP LOOSE PACKAGING	1	EA.
335-12694-004	—	LABEL VALVE DESIGNATIONS	1	EA.
035-14003-000	—	LABEL TAG DESIGNATIONS	1	EA.
023-04685-000	—	PIPE BUSH FACE 1/2 - 14 NPTE X 1/4 - 18 NPTI	1	EA.
021-12930-000	—	HOSE CLAMP 1-1/16" MINIMUM DIA.	2	EA.
013-01835-000	—	ENAMEL SPRAY PAINT, CARIBBEAN BLUE	1	EA.
922-08869-001	—	SAMPLE VALVE ADAPTER	1	EA.
THE BELOW ITEMS ARE NOT INCLUDED IN KIT BUT ARE SHIPPED WITH EACH UNIT				
024-26116-000 ²	—	CHILLED WATER FLOW SWITCH (STANDARD 150# DWP WATER BOXES)	1	EA.
026-20742-00X ³	—	STEAM CONTROL VALVE	1	EA.
013-02890-000	—	BENZOTRIAZOLE COMPOUND (BZT)	1	EA.

NOTES:

- * 50 Hz Kit Part Number 475-16236-001; 60 Hz Part Number 475-16236-000.
1. Only one vacuum pump supplied with each unit, dependent upon unit Hertz.
 2. One switch is included with each unit for chilled water flow. A condenser or hot water flow switch can be supplied as an extra to the order. Also available are 300# DWP flow switches and differential pressure switches.
 3. See Factory Order Sheet for specific Steam Control Valve part number.

UNIT SHIP LOOSE PARTS FOR 50*HZ AND 60*HZ STEAM FIRED UNITS NON-MERCURY MANOMETER

PART NO.	SUB-ITEM PART NO.	DESCRIPTION	QTY.	UOM
375-11050-000	—	KIT, ABSOLUTE PRESSURE GAUGE	1	EA.
—	026-32396-000	PRESSURE GAUGE, DIAL TYPE, (NON-MERCURY) 0 TO 40MM	1	EA.
—	028-12514-000	VACUUM TUBING 1/4" I.D. X 3/8" WALL (TYGON)	4	FT.
—	023-16945-000	NIPPLE 1/4" NPTE X 1/4" HOSE BARB	2	EA.
—	023-10280-000	HOSE CLAMP 1/4" MINIMUM DIA.	2	EA.
—	021-02459-000	MACHINE SCREW, PAN HEAD	2	EA.
—	023-02565-000	1/4" PIPE BUSHING	1	EA.
—	023-04039-000	PIPE BUSHING 3/4-14 NPTE X 1/4" NPTI	1	EA.
023-08856-000	—	HOSE CLAMP 11/16" MINIMUM DIA.	2	EA.
375-19010-000	—	LEAK TEST KIT	1	EA.
—	044-02982-000	POLYPROPYLENE HYDROMETER CYLINDER	1	EA.
—	022-08885-001	BALL VALVE 1/4" NPTI	1	EA.
—	022-08885-005	BALL VALVE 1/2" NPTI	1	EA.
—	023-14616-000	PIPE NIPPLE 1/2" SCHEDULE 40 CLOSE	2	EA.
—	023-03986-000	PIPE BUSHING 1/2 - 14 NPTE X 1/4 - 18 NPTI	1	EA.
—	023-11329-000	TEE SCREW 1/2 NPTI X 1/2 NPTI X 1/2 NPTI #300 LB.	1	EA.
—	023-04320-000	45 DEGREE ELBOW SCREW 1/2 NPTI X 1/2 NPTI	2	EA.
—	023-14611-000	PIPE NIPPLE 1/2 - 14 (SCHEDULE 40) NPTE X 4" LONG	1	EA.
—	028-10605-000	PLASTIC TUBE 3/8" O.D. X 1/4" I.D.	4	FT.
—	023-10280-000	HOSE CLAMP 1/4" MINIMUM DIA.	1	EA.
375-06889-000	—	GAUGE KIT	1	EA.
—	026-03952-000	3-1/2" DIAL COMPOUND GAUGE , STEAM PRESSURE	1	EA.
—	026-28384-000	SIPHON, ASHCROFT (TO BE USED WITH ABOVE COMPOUND GAUGE)	1	EA.
—	023-11103-000	1/4 -18 NPTI PIPE COUPLING	1	EA.
023-18224-000	—	HOSE BARB 1/2" NPTE X 3/4" HOSE BARB	1	EA.
028-13535-000	—	HOSE 3/4" I.D. X 1.024" O.D.	5	FT.
026-33637-000 ¹	—	VACUUM PUMP, 60HZ, MODEL 1400 (0.9 CFM) 60HZ UNITS ONLY	1	EA.
026-33832-000 ¹	—	VACUUM PUMP, 50HZ, MODEL 1400 (0.9 CFM) 50HZ UNITS ONLY	1	EA.
026-32007-002	—	REFRIGERANT REMOVAL TANK WITH 5/8" ID HOSE AND CLAMPS	1	EA.
035-12629-000	—	LABEL SHIP LOOSE PACKAGING	1	EA.
335-12694-004	—	LABEL VALVE DESIGNATIONS	1	EA.
035-14003-000	—	LABEL TAG DESIGNATIONS	1	EA.
023-04685-000	—	PIPE BUSH FACE 1/2 - 14 NPTE X 1/4 - 18 NPTI	1	EA.
021-12930-000	—	HOSE CLAMP 1-1/16" MINIMUM DIA.	2	EA.
013-01835-000	—	ENAMEL SPRAY PAINT, CARIBBEAN BLUE	1	EA.
922-08869-001	—	SAMPLE VALVE ADAPTER	1	EA.
THE BELOW ITEMS ARE NOT INCLUDED IN KIT BUT ARE SHIPPED WITH EACH UNIT				
024-26116-000 ²	—	CHILLED WATER FLOW SWITCH (STANDARD 150# DWP WATER BOXES)	1	EA.
026-20742-00X ³	—	STEAM CONTROL VALVE	1	EA.
013-02890-000	—	BENZOTRIAZOLE COMPOUND (BZT)	1	EA.

NOTES:

- * 50 Hz Kit Part Number 475-16237-001; 60 Hz Part Number 475-16237-000.
- 1. Only one vacuum pump shipped with each unit, dependent upon unit Hertz.
- 2. One switch is included with each unit for chilled water flow. A condenser or hot water flow switch can be supplied as an extra to the factory order. Also available are 300# DWP flow switches and differential pressure switches.
- 3. See Factory Order Sheet for specific Steam Control Valve part number.

