



**YORK MILLENNIUM YPC
STEAM CHILLER**

WIRING DIAGRAM

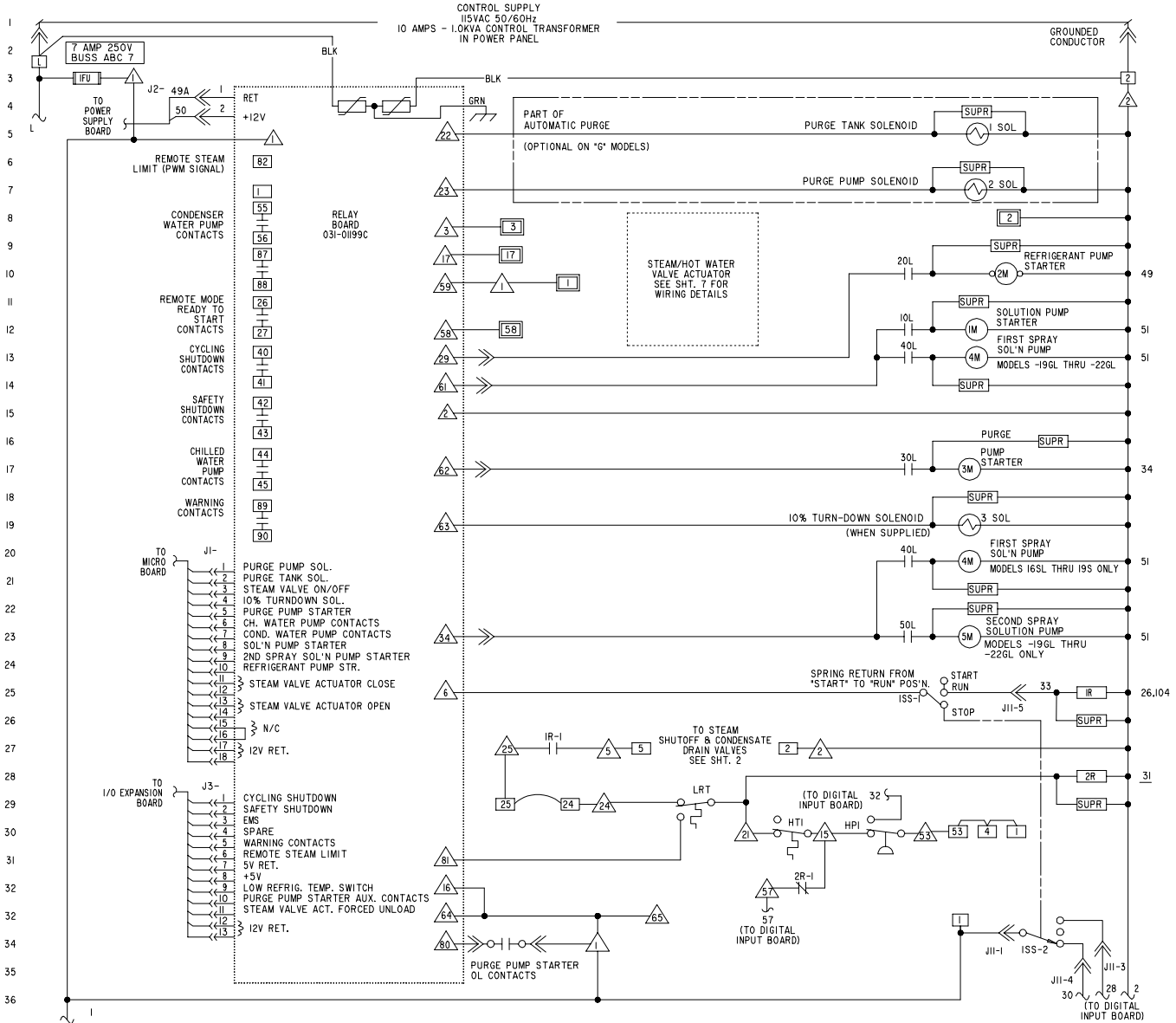
Supersedes: 155.19-W1 (1192)

Form 155.19-W1 (197)

**450 TONS THRU 1500 TONS
(50 AND 60 HERTZ)**

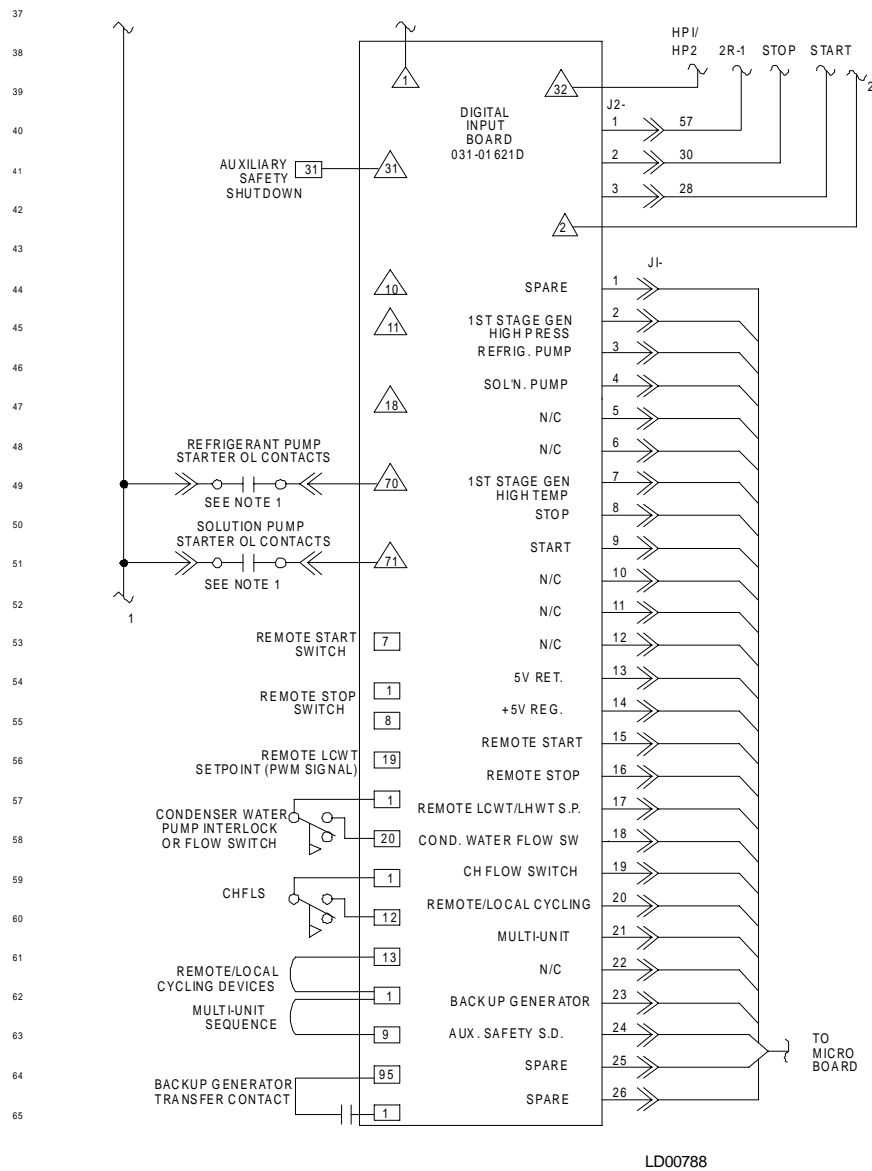


YPC CONTROL CENTER ELEMENTARY DIAGRAM

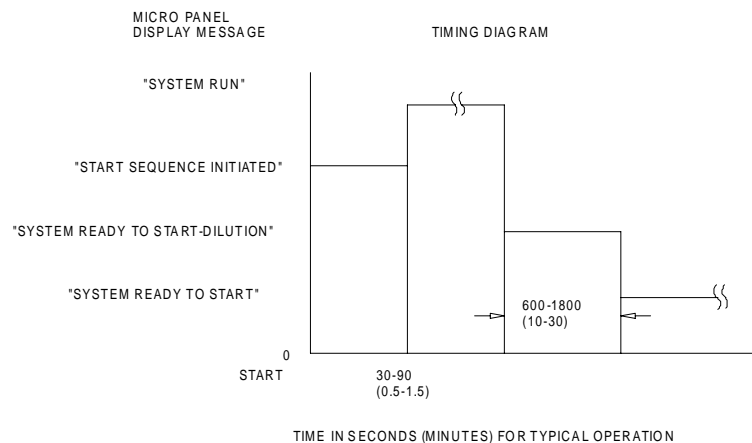


LD00787





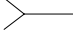


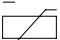
YPC CONTROL DIAGRAM ELEMENTARY DIAGRAM (Cont'd.)



TIMING DIAGRAM



YPC CONTROL DIAGRAM ELEMENTARY DIAGRAM (Cont'd.)

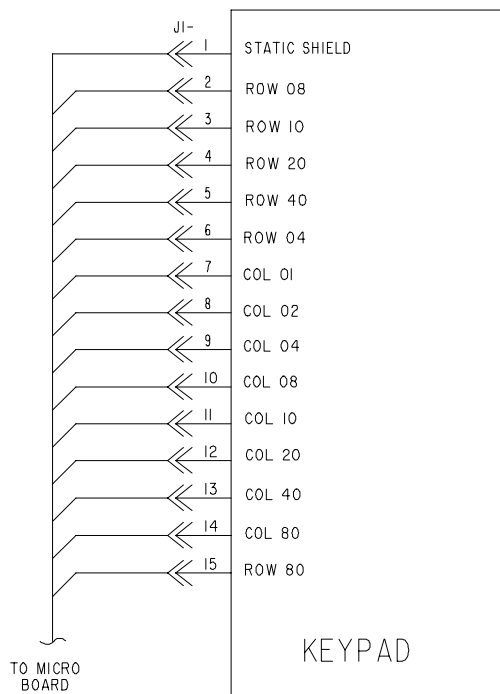
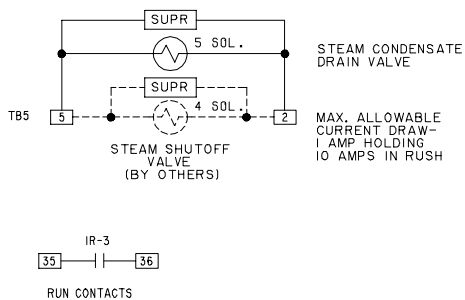
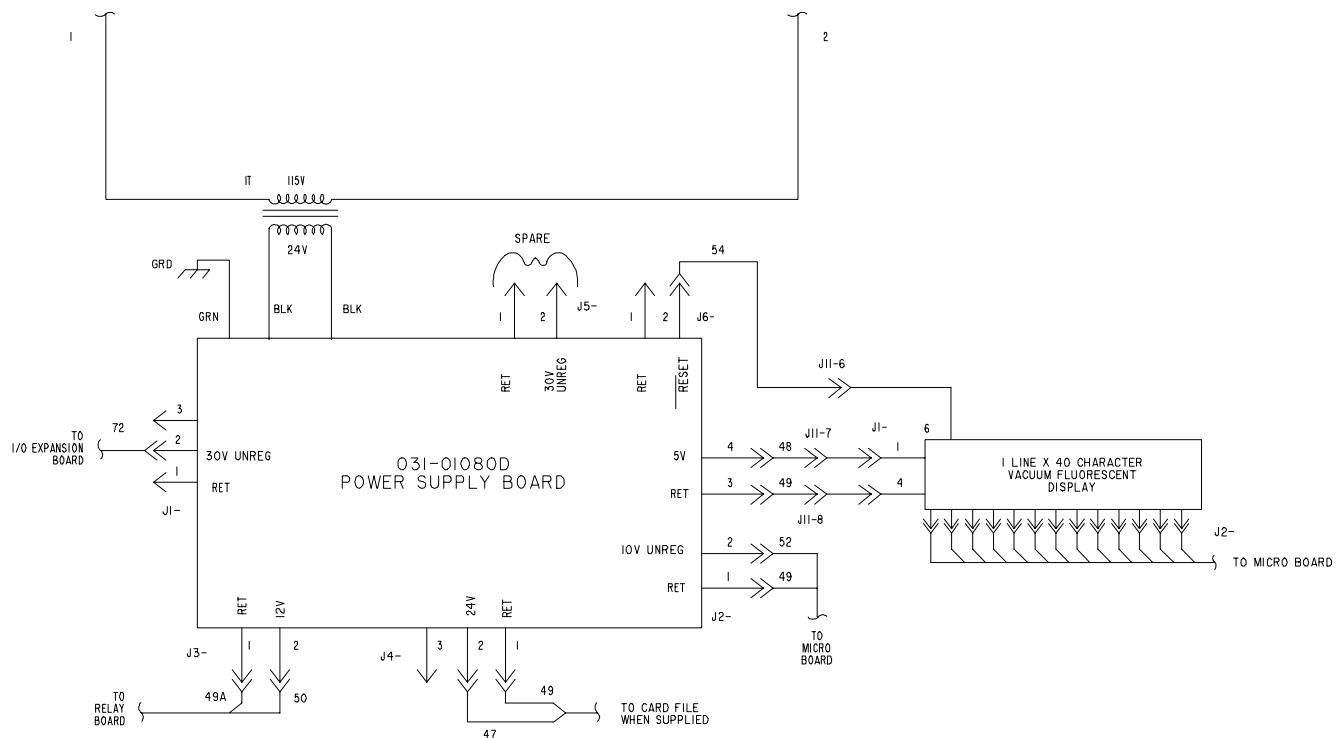
1M	3 PHASE SOLUTION PUMP STARTER (MOUNTED IN POWER PANEL)
2M	3 PHASE REFRIGERANT PUMP MOTOR STARTER (MOUNTED IN POWER PANEL)
3M	3 PHASE PURGE PUMP MOTOR STARTER (MOUNTED IN POWER PANEL)
4M	FIRST SPRAY SOLUTION PUMP MOTOR STARTER (MOUNTED IN POWER PANEL - MODELS -19GL THRU -22GL AND -16SL THRU -19S ONLY)
5M	SECOND SPRAY SOLUTION PUMP MOTOR STARTER (MOUNTED IN POWER PANEL - MODELS -19GL THRU -22GL ONLY)
1R	STEAM SHUTOFF SOLENOID VALVE CONTROL RELAY
2R	FIRST STAGE GENERATOR HIGH TEMP. CUT-OUT RELAY
1SOL	PURGE TANK SOLENOID VALVE
2SOL	PURGE PUMP SOLENOID VALVE
3SOL	10% TURNDOWN SOLENOID VALVE (WHEN SUPPLIED)
4SOL	STEAM SHUTOFF SOLENOID VALVE (BY OTHERS)
5SOL	STEAM CONDENSATE DRAIN SOLENOID VALVE
ISS	DPDT 3 POSITION ROCKER SWITCH
IT	CLASS 2 POWER SUPPLY TRANSFORMER
CHFLS	CHILLED WATER FLOW SWITCH CUT-OUT (BY YORK/WIRING BY OTHERS)
FU	FUSE
HPI	FIRST STAGE GENERATOR HIGH PRESSURE CUT-OUT SWITCH
HT1	FIRST STAGE GENERATOR HIGH TEMP. CUT-OUT SWITCH WITH (NON-TRIP) INDICATOR AND MANUAL RESET
HWT	LOW WATER TEMP. CUT-OUT (PROVIDED BY RT1)
LRT	LOW REFRIGERANT TEMPERATURE CUT-OUT SWITCH
LWT	LOW WATER TEMPERATURE CUT-OUT (PROVIDED BY RT1)
MOV	METAL OXIDE VARISTOR
OL	MOTOR OVERLOAD
PT1,PT2-PT4	PRESSURE TRANSDUCER
RT1-RT12	RESISTANCE TEMPERATURE SENSING ELEMENT (RT12 OPTIONAL ON "G" MODELS)
SUPR	TRANSIENT SUPPRESSOR
TB1,TB3,TB6	TERMINAL BLOCK, FACTORY WIRING - 
TB2,TB4,TB5	TERMINAL BLOCK, FIELD CONNECTION - 
TB7	TERMINAL BLOCK, FIELD CONNECTION, STEAM VALVE ACTUATOR - 
-----	FIELD WIRING
=====	FACTORY WIRING
-----	CIRCUIT BOARD OR ENCLOSURE BOUNDARY
	JACK (J1,J2,...)
	JACK (P1,P2,...)
	WIRE ENTRANCE HOLE IN CONTROL PANEL
-----	OPTION (WHEN SUPPLIED) BY YORK.
-----	MECHANICAL LINKAGE
	SHIELDED CABLE
	METAL OXIDE VARISTOR

NOTES

1. THIS WIRING DIAGRAM DESCRIBES THE STANDARD ELECTRONIC CONTROL SCHEME. REFER TO THE POWER PANEL WIRING DIAGRAM (LOCATED IN THE POWER PANEL ENCLOSURE) FOR ADDITIONAL INFORMATION. FOR DETAILS OF STANDARD MODIFICATIONS, REFER TO PRODUCT FORM 155.17-PA1.
2. FIELD WIRING TO BE IN ACCORDANCE WITH THE NATIONAL ELECTRICAL CODE AS WELL AS ALL OTHER APPLICABLE CODES AND SPECIFICATIONS.
3. NUMBERS ALONG THE LEFT SIDE OF DIAGRAM ARE LINE IDENTIFICATION NUMBERS. THE NUMBERS ALONG THE RIGHT SIDE INDICATE THE LINE NUMBER LOCATION OF RELAY CONTACTS. AN UNDERLINED CONTACT LOCATION SIGNIFIES A NORMALLY CLOSED CONTACT.
4. MAIN CONTROL PANEL CLASS 1 FIELD WIRING TERMINAL CONNECTION POINTS ARE INDICATED BY NUMBERS WITHIN A RECTANGLE, I.E. 16. MAIN CONTROL PANEL FACTORY WIRING TERMINAL CONNECTION POINTS ARE INDICATED BY NUMBERS WITHIN A TRIANGLE, I.E. △. COMPONENT TERMINAL MARKINGS ARE INDICATED BY NUMBERS WITHIN A CIRCLE, I.E. C. NUMBERS ADJACENT TO CIRCUIT LINES ARE THE CIRCUIT IDENTIFICATION NUMBERS.
5. TO CYCLE UNIT ON AND OFF AUTOMATICALLY WITH CONTACTS OTHER THAN THOSE SHOWN, INSTALL A CYCLING DEVICE BETWEEN TERMINALS 17 & 13 (LINE 6)(SEE NOTE 7). IF A CYCLING DEVICE IS INSTALLED, JUMPER MUST BE REMOVED BETWEEN TERMINALS 17 & 13.
6. TO STOP UNIT AND NOT PERMIT IT TO START AGAIN, INSTALL A STOP DEVICE BETWEEN TERMINALS 17 & 8 (LINE 54)(SEE NOTE 7). A REMOTE START-STOP SWITCH MAY BE CONNECTED TO TERMINALS 17, 8 & 8 (LINES 53 & 54) (SEE NOTE 7). REMOTE START-STOP SWITCHES (LINES 53 & 54) ARE OPERATIVE ONLY IN THE "REMOTE" OPERATING MODE.
7. DEVICE CONTACT RATING TO BE 5 MILLIAMPERES AT 115 VOLTS A.C.
8. CONTACT RATING IS 5 AMPS RESISTIVE AT 120 VOLTS A.C. OR 240 VOLTS A.C.
9. ORIENTATION OF FLOW SWITCHES INDICATE "POWER OFF" STATE.
10. THE FACTORY SUPPLIED JUMPER BETWEEN 4 & 53 (LINE 29) MUST BE REMOVED WHEN AN AUXILIARY SAFETY DEVICE IS USED.
11. CONTACT RATING IS 5 AMPS RESISTIVE ± 250 VOLTS A.C. & 30 VOLTS D.C., 2 AMP INDUCTIVE (.4 PF) ±250 VOLTS A.C. & 30 VOLTS D.C.
12. EACH 115VAC FIELD-CONNECTED INDUCTIVE LOAD: I.E., RELAY COIL, MOTOR STARTER COIL, ETC. SHALL HAVE A TRANSIENT SUPPRESSOR WIRED IN PARALLEL WITH ITS COIL, PHYSICALLY LOCATED AT THE COIL. SPARE TRANSIENT SUPPRESSORS AND CONTROL CIRCUIT FUSE ARE SUPPLIED IN A BAG ATTACHED TO THE FUSEHOLDER.
13. MAXIMUM ALLOWABLE CURRENT DRAW IS 1 AMP HOLDING, 10 AMPS INRUSH FOR 115VAC FIELD-SUPPLIED STEAM SHUTOFF VALVE (LINE 100).

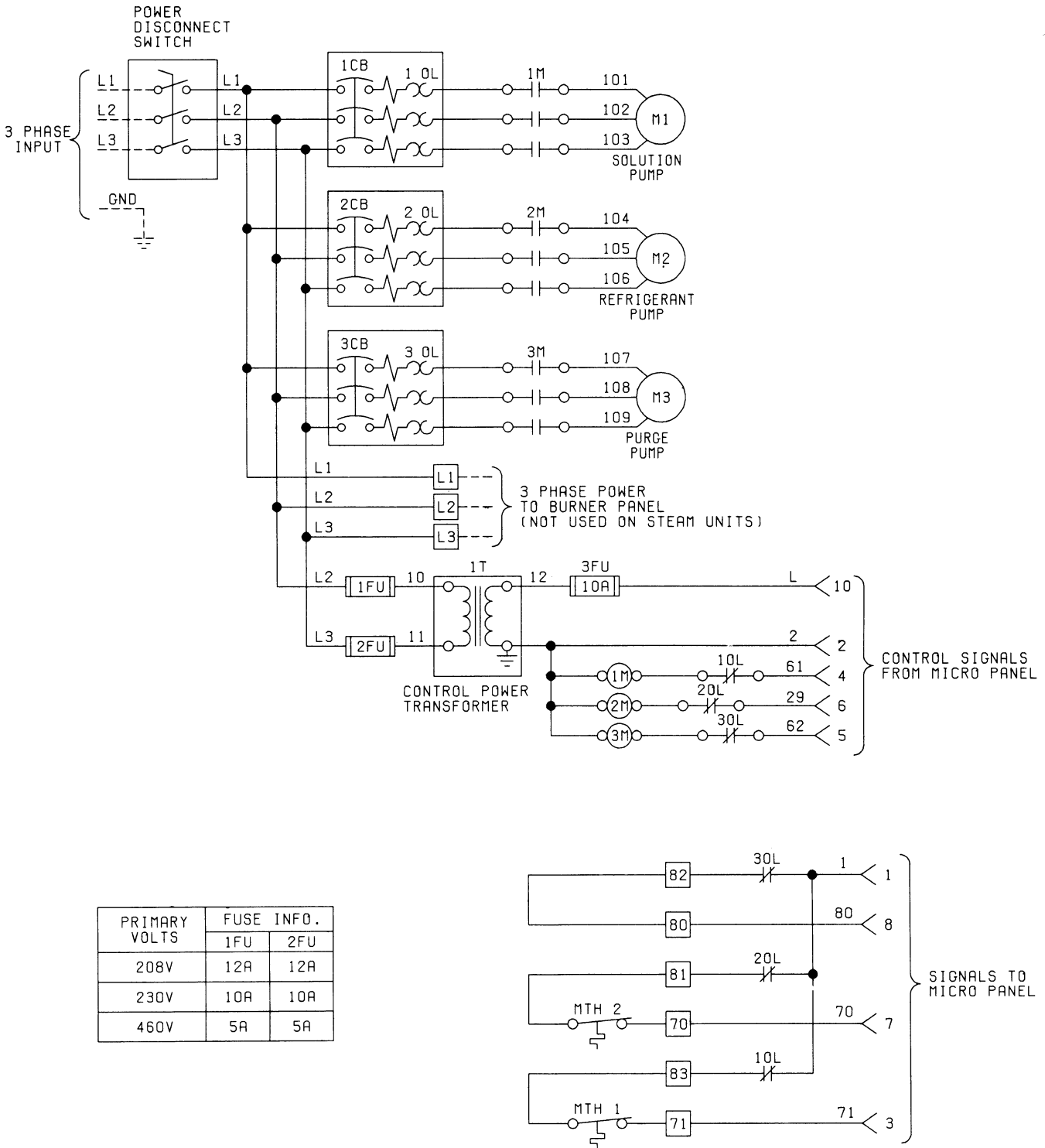
YPC CONTROL DIAGRAM ELEMENTARY DIAGRAM (Cont'd.)

73
74
75
76
77
78
79
80
81
82
83
84
85
86
87
88
89
90
91
92
93
94
95
96
97
98
99
100
101
102
103
104
105
106
107



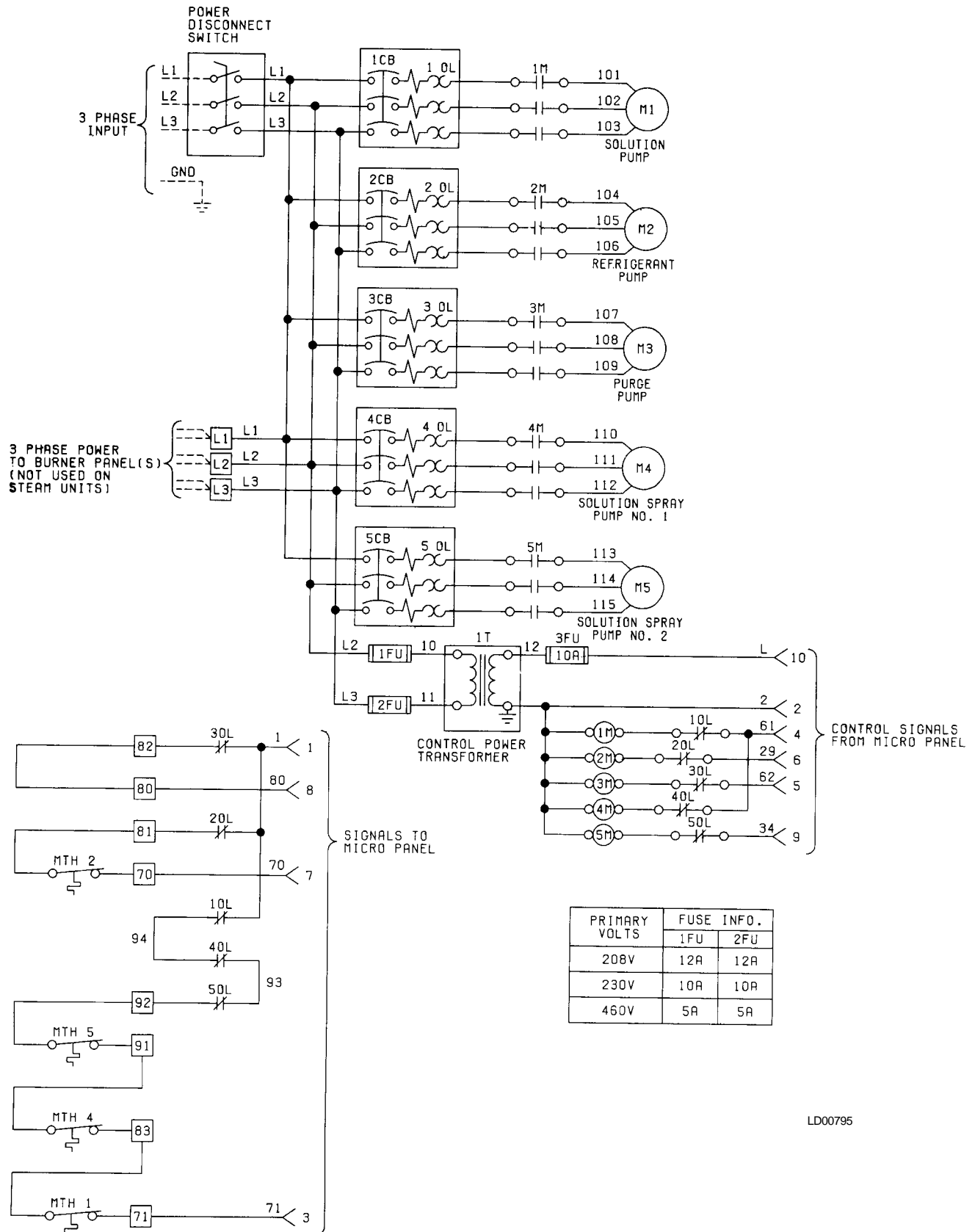
LD00792

POWER PANEL ELEMENTARY DIAGRAM MODELS YPC-ST-16GL TO -19G



LD00794

POWER PANEL ELEMENTARY DIAGRAM MODELS YPC-ST-19GL TO -22G



LD00795

NOTE: This drawing represents the standard UL burner panel scope of supply. For project specific burner panel wiring details, please consult factory submitted information.

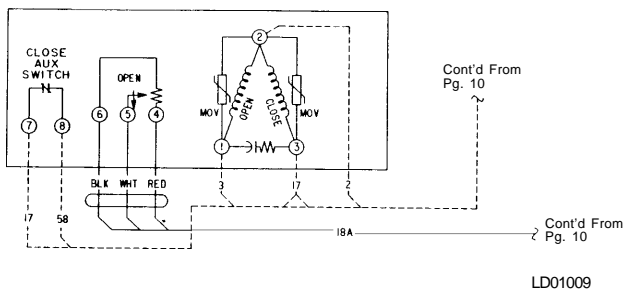
STEAM CHILLER PRESSURE – TEMPERATURE CHART

APPLICATION			DEVICE	UNITS	OPERATING POINT			
	CHILLER				ONRISE		ONFALL	
	√		HP1	PSIA/ KPa	CUT-OUT 13.73/94.67	HPOVER- RIDE-FORCED UNLOAD* 12.76/87.9	HPOVER- RIDE RELEASE* 5.00/34.47	CUT-IN 0.77/5.31
	√		HT1	DEG. F/ DEG. C	CUT-OUT 330/165.6	HTOVER- RIDE-FORCED UNLOAD+ 326/163.3	HTOVER- RIDE RELEASE+ 250/121.1	CUT-IN 39.1/3.9
	√		LRT	DEG. F/ DEG. C	CUT-IN++ 42.1/5.6	LRT OVER- RIDE-ALLOW LOADING □ 40.5/4.7	LRT OVER- RIDE INHIBIT LOADING □ 40/4.4	CUT-OUT++ 39.1/3.9
	√		LWT	DEG. F/ DEG. C	7.0/3.9 ABOVE THE CHILLED WATER TEMP. SETPOINT		3.0/1.7 BELOW THE CHILLED WATER TEMP. OR 40/4.4 MIN. SET- POINT: WHEN THE SETPOINT IS RAISED, LWT=40/4.4 FOR 30 MIN.	

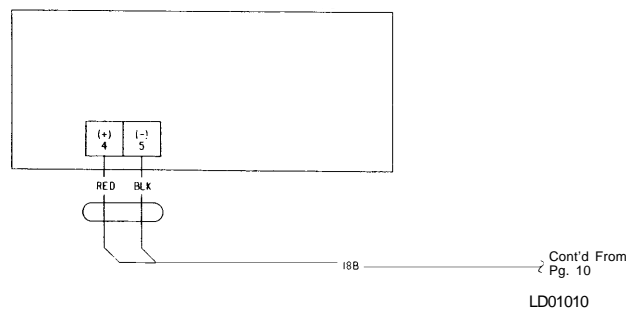
* FUNCTION PROVIDED BY FIRST-STAGE GENERATOR PRESSURE TRANSDUCER
 + FUNCTION PROVIDED BY FIRST-STAGE GENERATOR TEMP. SENSOR
 □ FUNCTION PROVIDED BY REFRIGERANT TEMP. SENSOR (RT10)
 ++ FUNCTION PROVIDED BY REFRIGERANT TEMP. SWITCH (LRT) AND REFRIGERANT TEMP. SENSOR (RT10)

STEAM VALVE CONNECTION DIAGRAMS

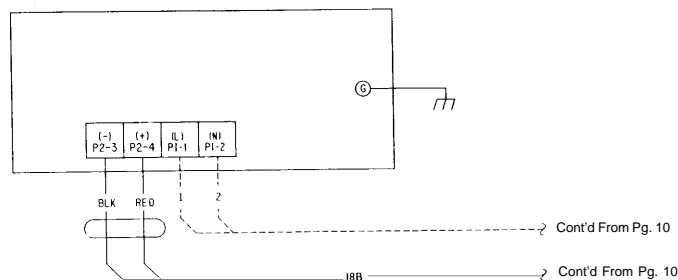
HONEYWELL STEAM/HOT WATER VALVE ACTUATOR



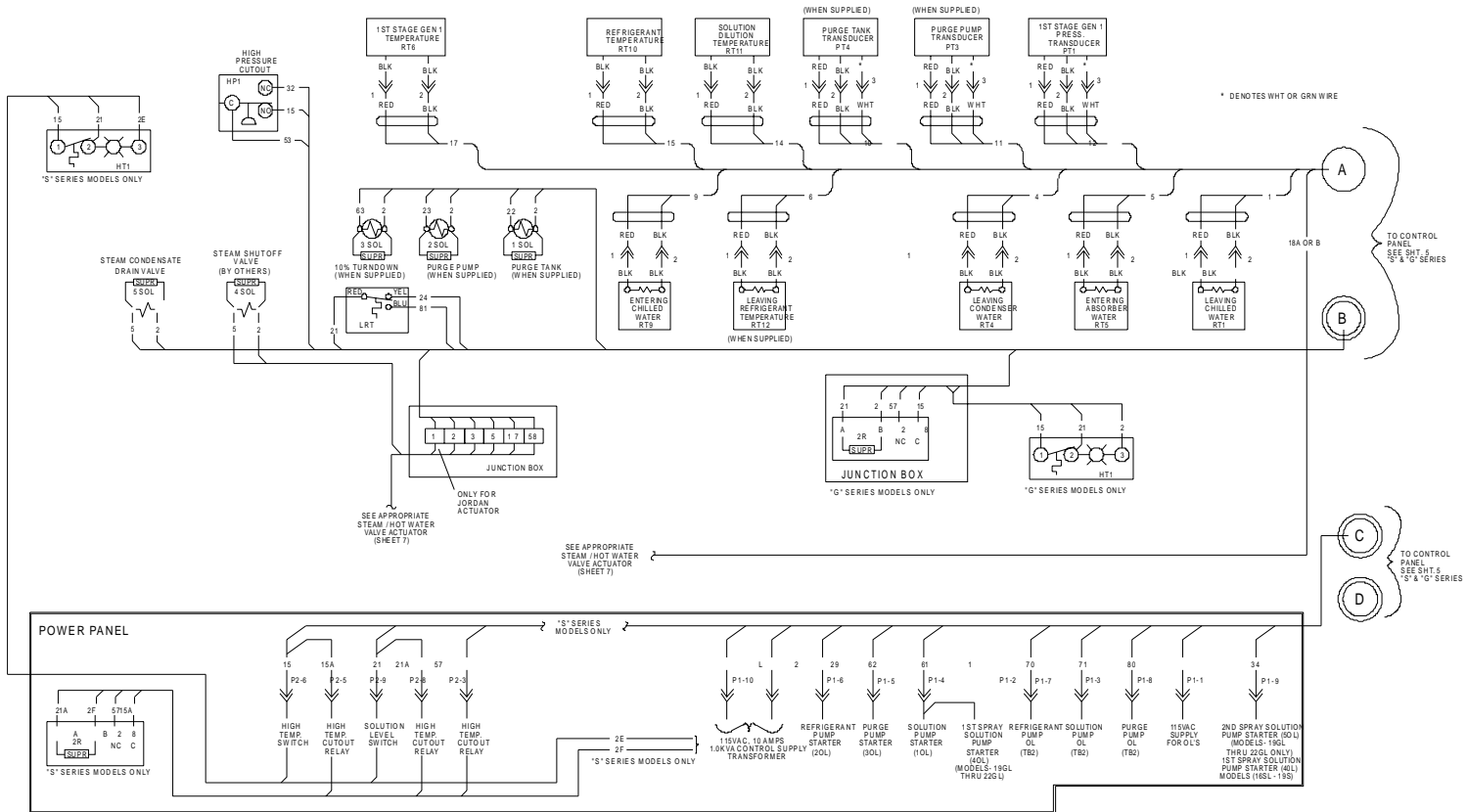
LESLIE STEAM/HOT WATER ELECTRO PNEUMATIC VALVE



LESLIE STEAM/HOT WATER VALVE w/JORDAN ELECTRIC ACTUATOR

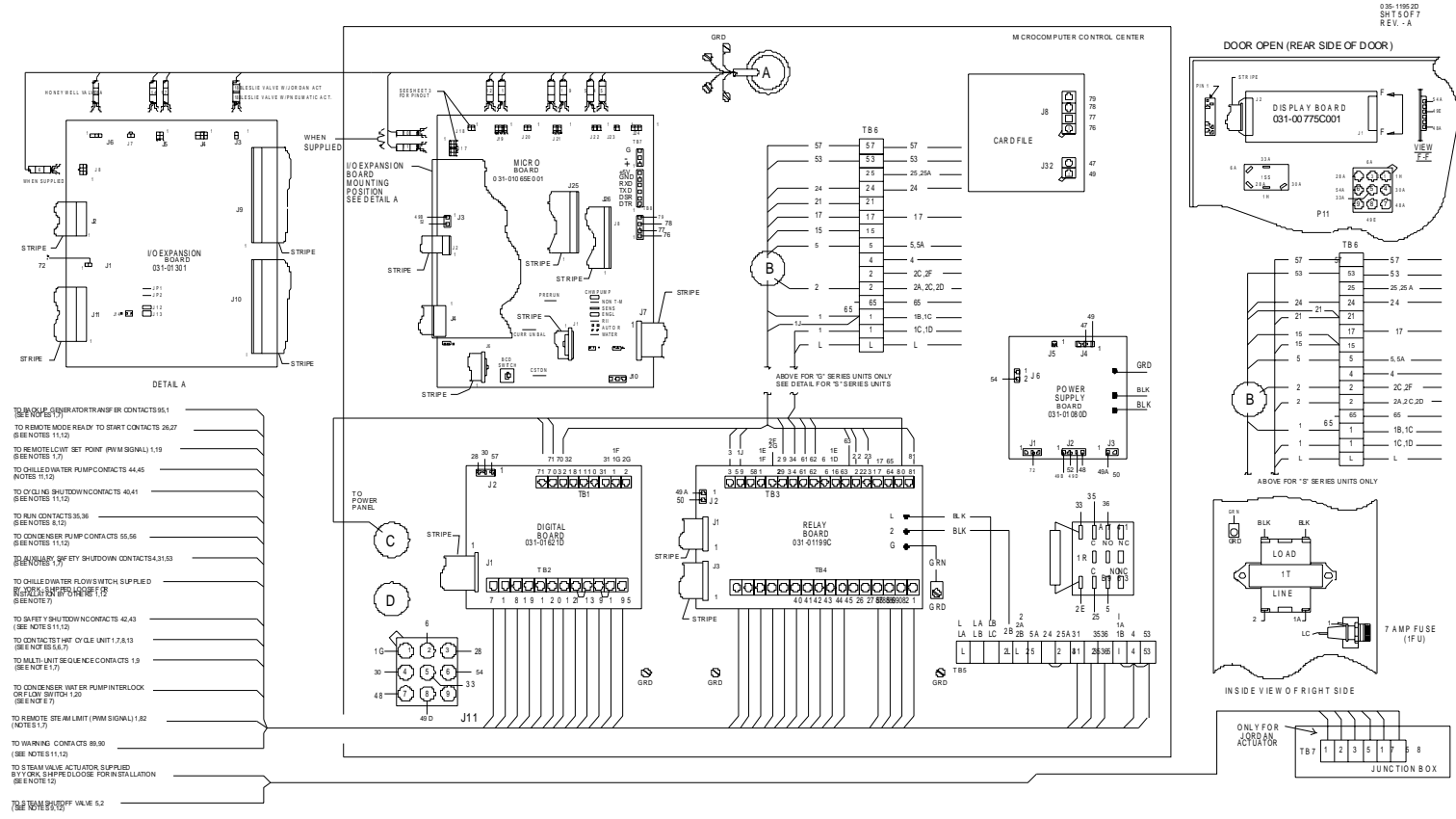


YPC CONTROL CENTER CONNECTION DIAGRAM

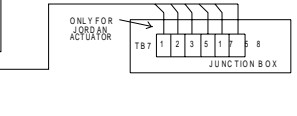
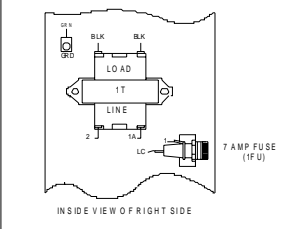
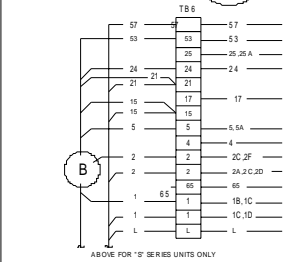
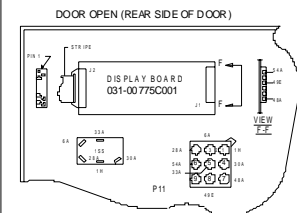


LD00793

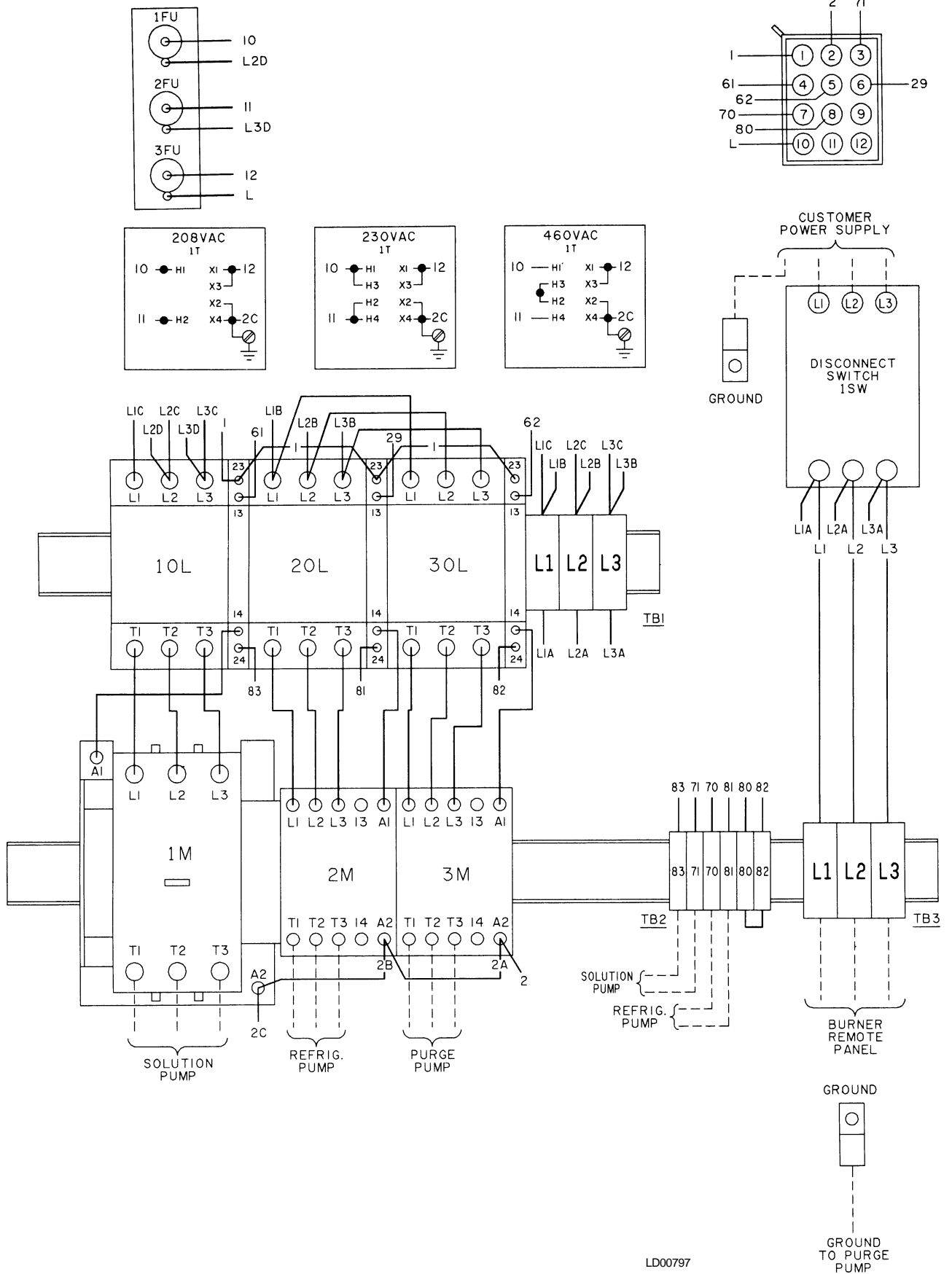
YPC CONTROL CENTER CONNECTION DIAGRAM



036-10620
SHT 5 OF 7
REV. A

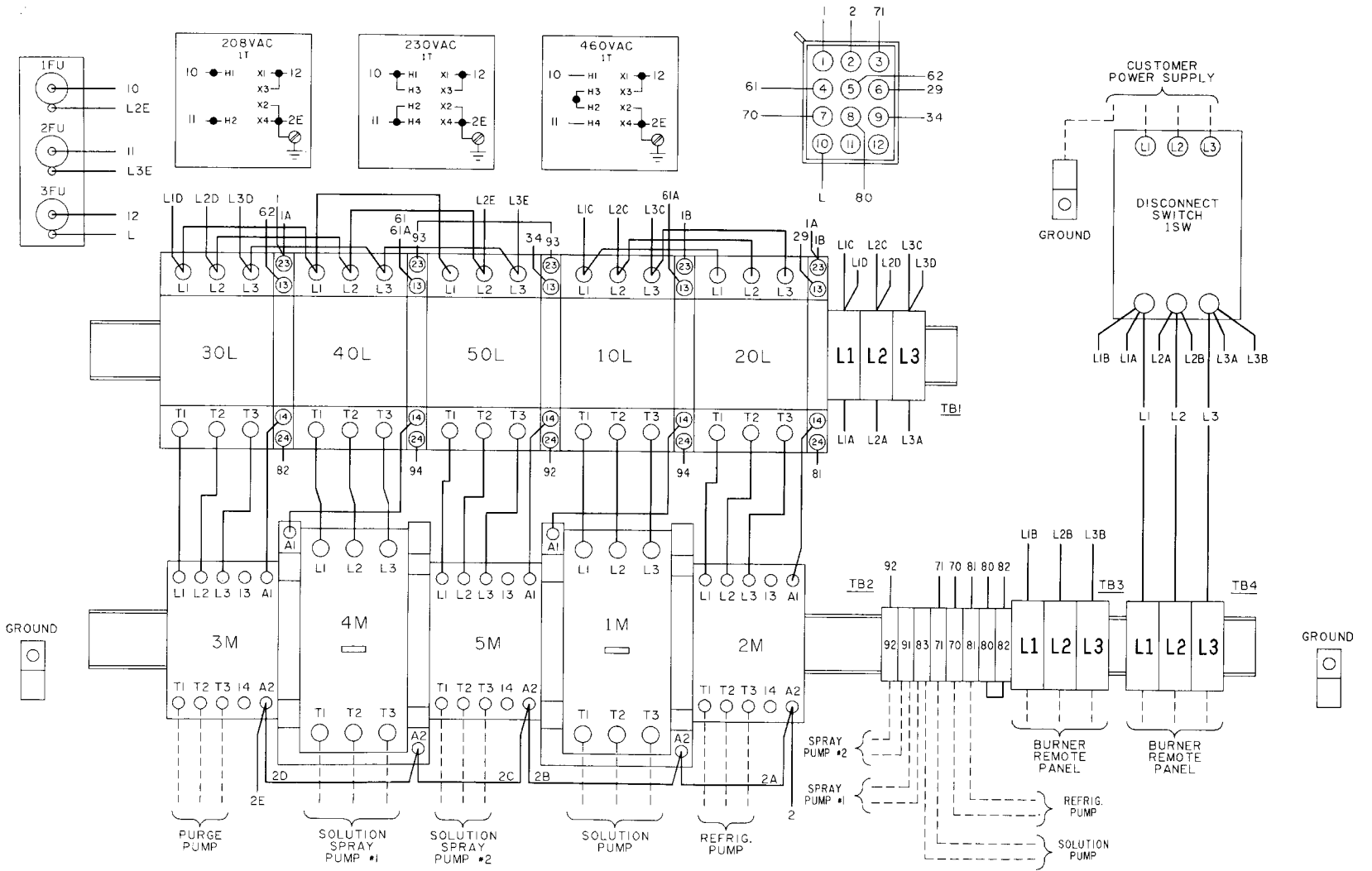


POWER PANEL CONNECTION DIAGRAM MODELS YPC-ST-16GL TO -19G



LD00797

POWER PANEL CONNECTION DIAGRAM MODELS YPC-ST-19GL TO -22G



PO Box 1592, York, Pennsylvania USA 17405-1592
 Copyright © by York International Corporation 1997
 Form 155, 19-W1 (197)
 Supersedes, 155, 19-W1 (1192)

Subject to changes without notice. Printed in USA
 ALL RIGHTS RESERVED