

SERVICE BULLETIN

Affected Equipment: YPAL Model F, 50 - 65 TON

Subject: Ground Wire on Supply, Exhaust and/or Return Fan Motors

Issue Date: 4-25-2011

Withdrawal Date: 12/31/2011

Data Control Level:

Materials Needed: None

Tools Required: Standard Hand Tools

Est. Time Required: 1 Hour

Warranty: Yes

*Do not touch motor or railing with power applied (see Figures 1 and 3).***GENERAL**

The ground wire from the motor is connected to the isolated section of the motor(s) on YPAL 50-65 Model F R410A units (see Figure 1). This presents a possible shock hazard because the motor may not have a proper connection to the main ground of the unit. This could occur on any or all of the motors in the unit (Supply, Return, and/or Exhaust).

MATERIALS NEEDED

The materials below may or may not be needed to complete the repair. These materials are readily available through local wholesale distributors.

1. Ground wire (green), 14 gauge, 30" long. JCI# 025-34027-000
2. Insulated #10 ring tongue connector (motor side). JCI# 025-11083-000
3. Insulated 1/4" ring tongue connector (ground side). JCI# 025-30997-000
4. Self tapping screw, 1/4"-20 x 3/4". JCI# 021-13910-000

SOLUTION

DO NOT touch motor or railing with power applied, utilize standard lockout tagout procedures. See Figure 2 and 3 for correct fan grounding. Remove the ground wire connection from the isolated section of the motor and relocate the wire to a spot on the unit frame or support bracket (see Figure 3). If the wire length is not adequate use the materials above to replace the wire and attach as indicated.

Work on this equipment should only be done by properly trained personnel who are qualified to work on this type of equipment. Failure to comply with this requirement could expose the worker, the equipment and the building and its inhabitants to the risk of injury or property damage.

The instructions on this service bulletin are written assuming the individual who will perform this work is a fully trained HVAC & R journeyman or equivalent, certified in refrigerant handling and recovery techniques, and knowledgeable with regard to electrical lock out/tag out procedures. The individual performing this work should be aware of and comply with all Johnson Controls, national, state and local safety and environmental regulations while carrying out this work. Before attempting to work on any equipment, the individual should be thoroughly familiar with the equipment by reading and understanding the associated service literature applicable to the equipment. If you do not have this literature, you may obtain it by contacting a Johnson Controls Service Office.

Should there be any question concerning any aspect of the tasks outlined in this bulletin, please consult a Johnson Controls Service Office prior to attempting the work. Please be aware that this information may be time sensitive and that Johnson Controls reserves the right to revise this information at any time. Be certain you are working with the latest information.

WARRANTY

All the units are covered by the original warranty so all claims should be submitted under the normal warranty process. If labor warranty was not purchased on the unit we will still cover the labor under the Known Defect Policy. We will allow up to a maximum of 4 hours travel time plus 1 hour per unit to complete the repair. Reference this Service Bulletin SB0128 in the Description section of the submittal.

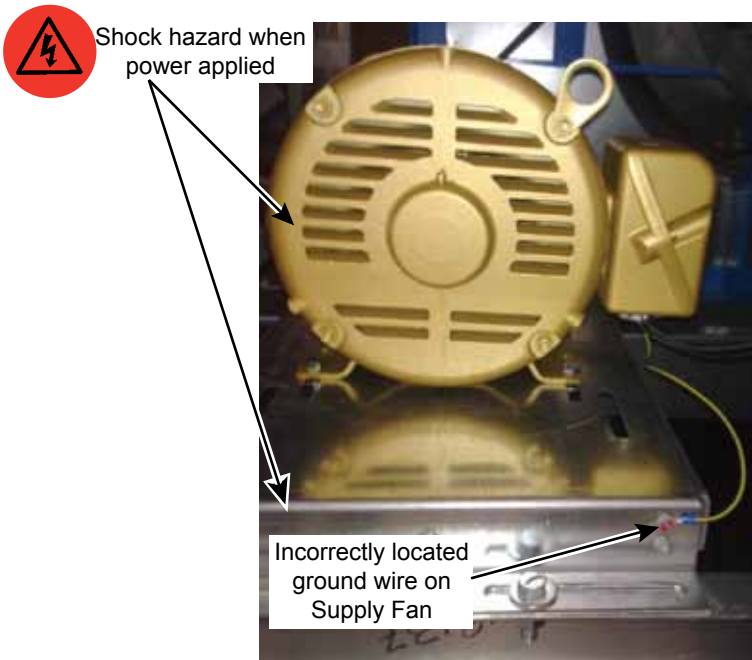


FIGURE 1 - INCORRECT SUPPLY FAN GROUNDING



FIGURE 2 - CORRECT EXHAUST FAN GROUNDING

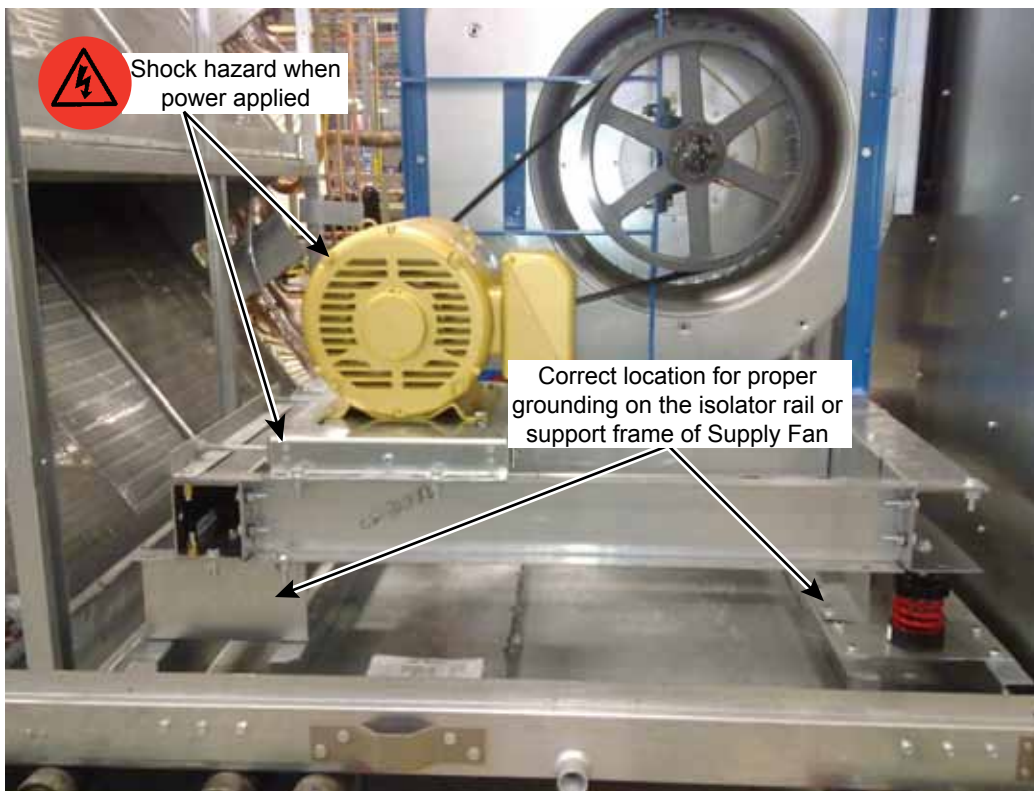


FIGURE 3 - CORRECT SUPPLY FAN GROUNDING