

ACCESSORY KIT INSTALLATION INSTRUCTION

FIELD INSTALLATION SIMPLICITY® LINC MODULE

Model: 2ML04700324

GENERAL

The following Instruction provides the necessary information to field install a Simplicity® LINC protocol converter.

Operational details for the Simplicity® LINC are in the Application Guide, P/N 514067.

The Simplicity® LINC can be used on all Simplicity® rooftop control boards manufactured after 4/2/2008. It may also be used with prior Simplicity® Elite™ and Simplicity® with Intelli-Comfort™ controls.

⚠ CAUTION

The default Simplicity® board address is 1 and must remain on address 1 to correctly communicate with Simplicity® LINC. To change the address to 1, press the Com/Setup button 3 times in succession.

TABLE 1: KIT COMPONENTS

Item	Qty	P/N	Description
1	1	504153	Simplicity® LINC Control
2	1	131148	Wire 827 / RD
3	1	131146	Wire 828 / BK
4	1	131147	Wire 829 / W
5	1	131149	Wire 830 / BR
6	1	127824	Wire 890 / BK
7	1	127825	Wire 891 / W
8	1	127826	Wire 892 / BR
9	1	127827	Wire 893 / RD
10	1	514066	Accessory Installation Instruction
11	1	514067	Simplicity® LINC Application Guide

INSTALLATION

1. Disconnect all electrical power to the unit.
2. Open the electrical control box door.
3. See Figures 5 thru 4 for your unit control mounting location.
4. Mount module by pressing the included plastic stand-offs into the 4 corner holes of the Simplicity® LINC Control. Press the stand-offs into the appropriate mounting holes.

NOTE: Mounting holes are pre-punched.

5. Locate wiring diagram on the inside of the control box door or See Figures 7, 8, 9 and 10. for wiring diagrams.

6. Wire control per these diagrams using wires supplied in this Kit. The wires are for all applications - find the set whose numbers match your unit and discard the rest.

BLK Wire from Simplicity® LINC terminal (485 +) to terminal (B) on the unit control.

WHT Wire from Simplicity® LINC terminal (485 -) to terminal (A) on the unit control.

RED Wire from Simplicity® LINC terminal (POWER +) to 24VAC Red of unit control transformer.

BRN Wire from Simplicity® LINC terminal (POWER -) to 24VAC Brown common of unit control transformer.

7. External communication wiring is to be supplied by the customer.
8. The unit is now ready for operation. Detailed information for the Simplicity® LINC is found in the Application Guide, P/N 514067.
9. Close electrical control box door.
10. Connect electrical power.
11. Check system for normal operation.

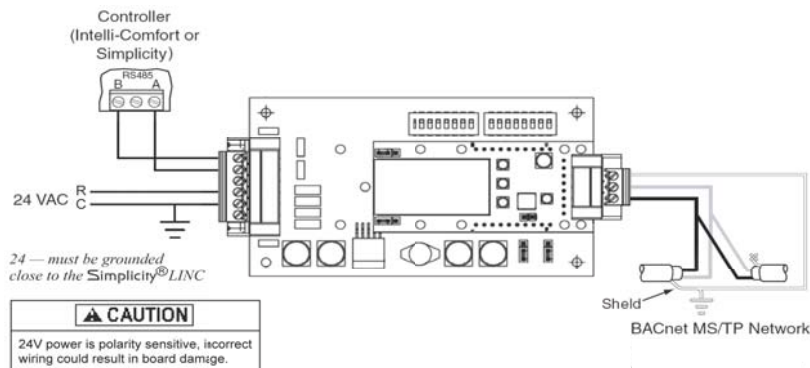


FIGURE 1: Simplified Wiring Connections



FIGURE 2: Simplicity®LINC Location in 3-6 Ton RTU, Wrapper for Intelli-Comfort™ Controls

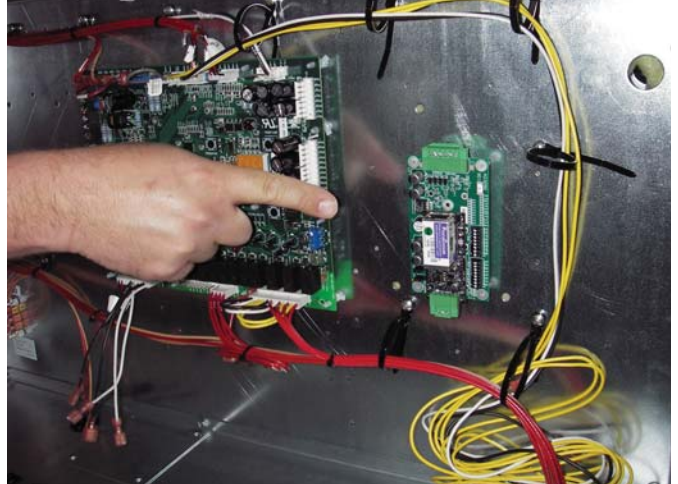


FIGURE 5: Simplicity®LINC Location in 25-40 Ton RTU



FIGURE 3: Simplicity®LINC Location in 6.5-12.5 Ton RTU

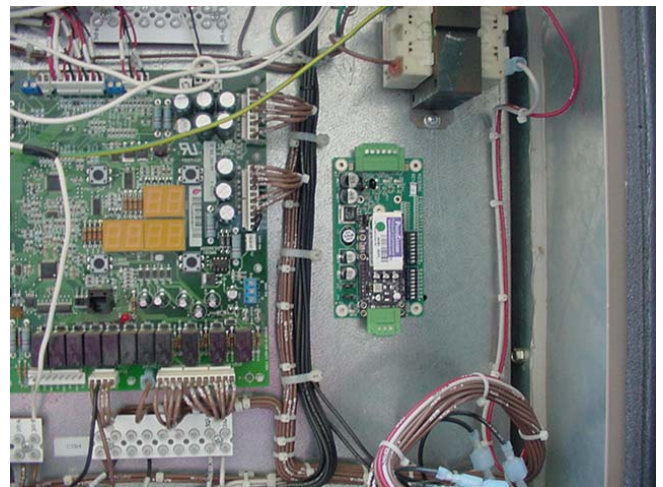


FIGURE 6: Simplicity®LINC Location in 50-65 Ton RTU

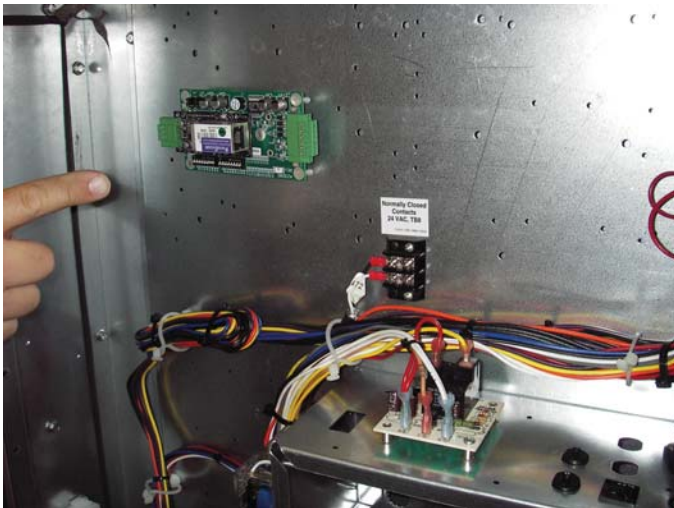


FIGURE 4: Simplicity®LINC Location in 15-25 Ton RTU

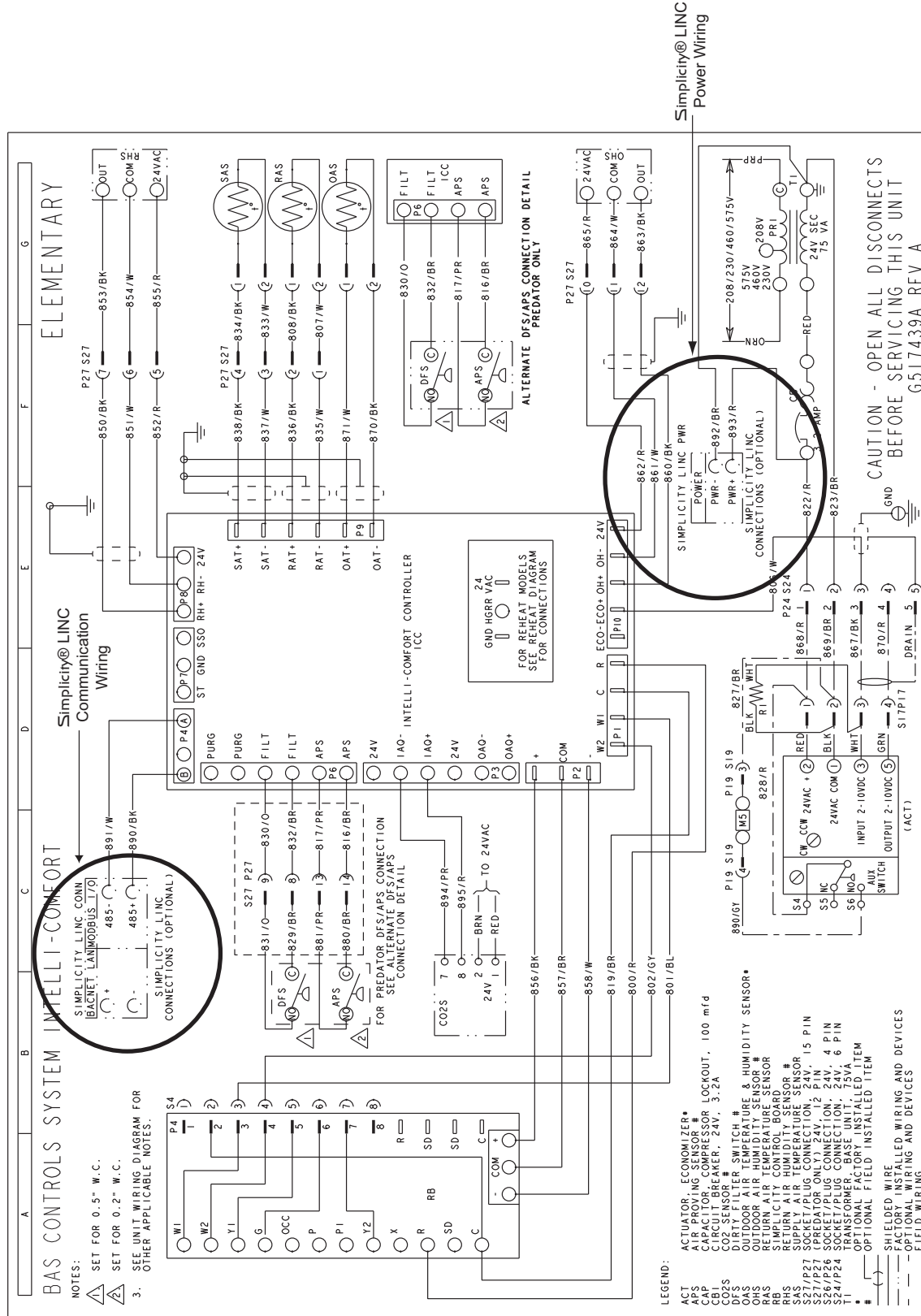


FIGURE 7: Intelli-Comfort™ with Simplicity® LINC

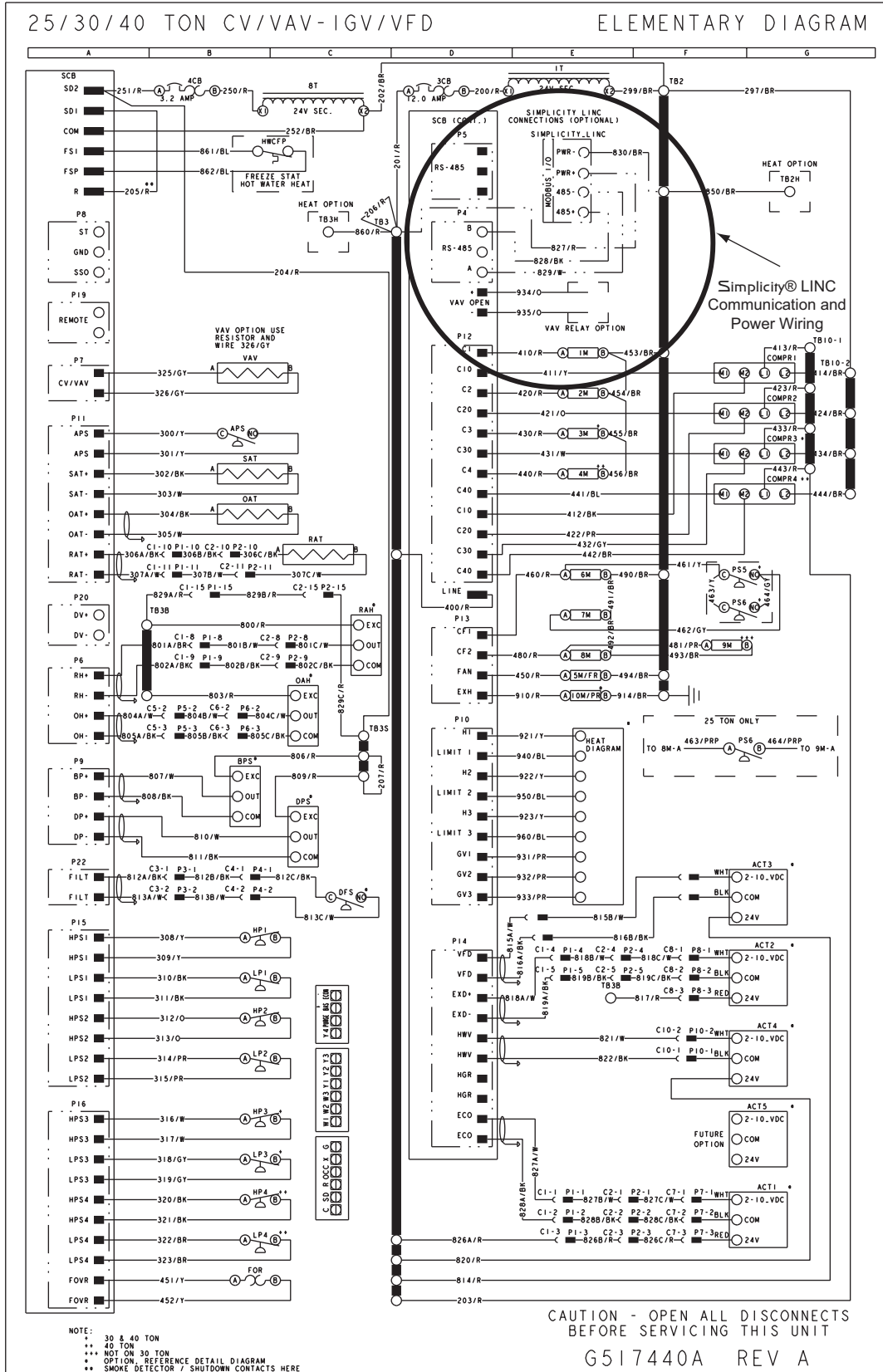


FIGURE 8: Simplicity® Elite™ with Simplicity®LINC Wiring

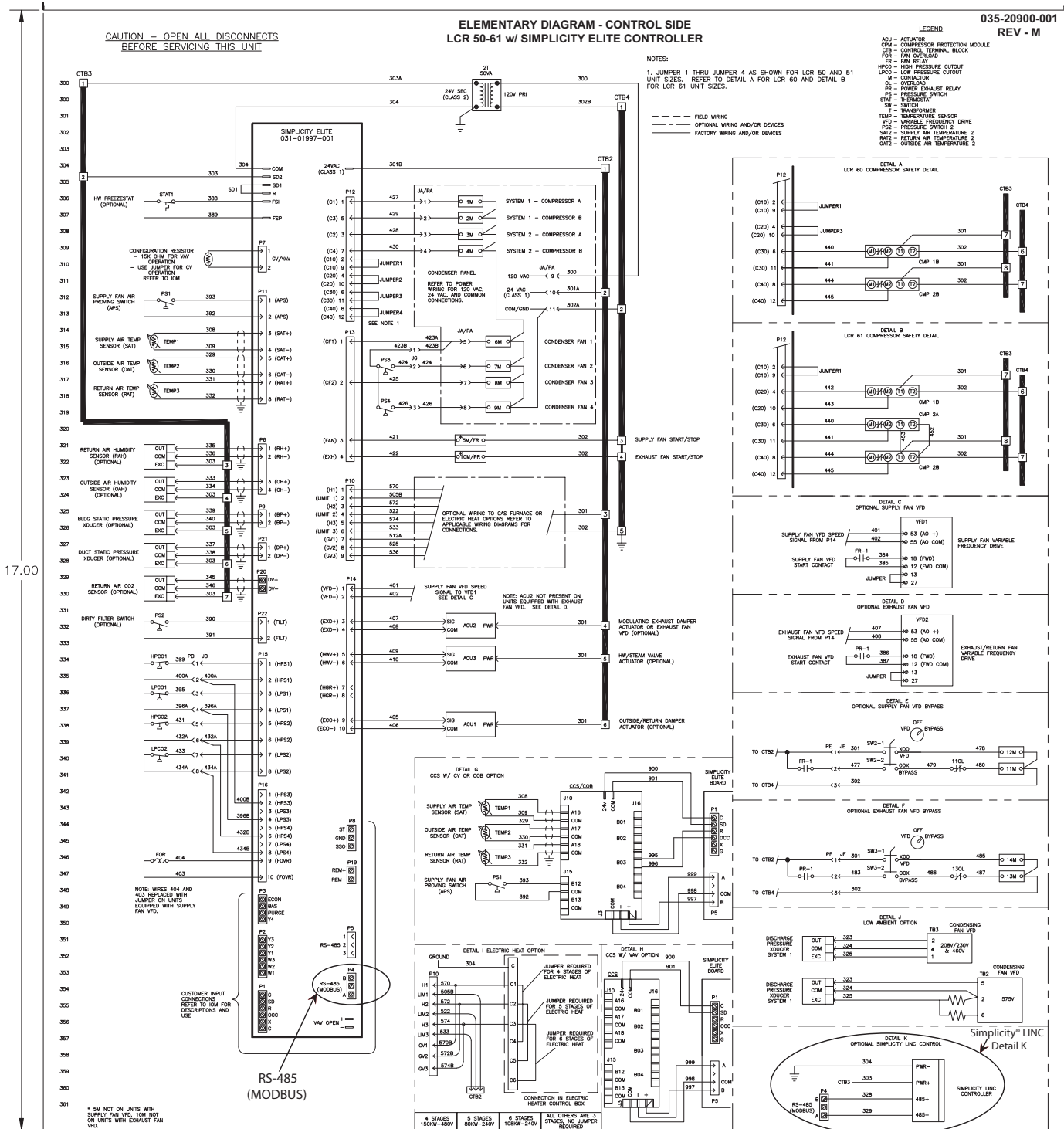


FIGURE 9: Typical YPAL Simplicity® Elite™ with Simplicity® LINC Wiring

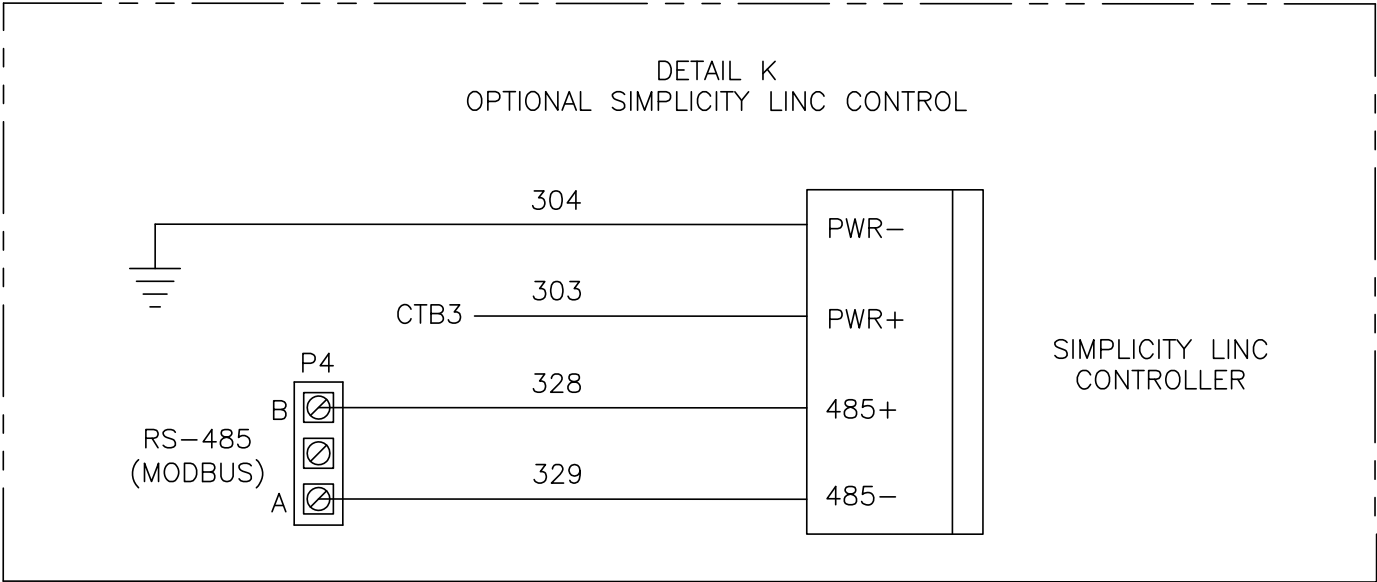


FIGURE 10: YPAL Simplicity® LINC DETAIL K

NOTE: On YPAL Units, relabel kit wires to match Figures 9, 10 and use Table 2 for reference.

TABLE 2: YPAL TO KIT WIRE CONVERSION

Kit Wire	YPAL Wire
Wire 827 / RD	303
Wire 830 / BR	304
Wire 828 / BK	328
Wire 829 / W	329

