

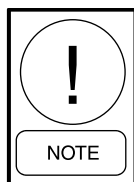
This Roof Curb is NRCA approved and is constructed of 14 gauge galvanized steel with a full perimeter 2"X4" wood nailer strip. The curb is shipped with the following parts.

026-44996-001-14" HIGH		
Item	Qty	Description
A	3	End Panels, 83 x 14
B	6	Side Panels, 79 x 14
C	1	Supply Panels, 26 x 14
D	4	Splice Channels
E	3	Brace Panels, 83 x 14
F	2	End Panels, 83 x 14
G	1	Hardware Package
		(78) .375-16 x 1.00 Hex Bolt w/ Nuts
		(78) .375 Helical Lock Washers
		(78) .375 Flat Washers
		(98 ft) 3/4 x 1 1/4 Foam Gasket

INSTALLATION

1. Layout the curb pieces as shown on Figure 1.
2. Install the 3/8" bolts on both ends of End Panels (A) and Brace Panels (E) through the designated holes in Side Panels (B). Make sure the corners are flush and square as shown in Figure 1. Tighten the hardware securely.

Place the curb in the proper location.



Make sure the curb section is "IN SQUARE".

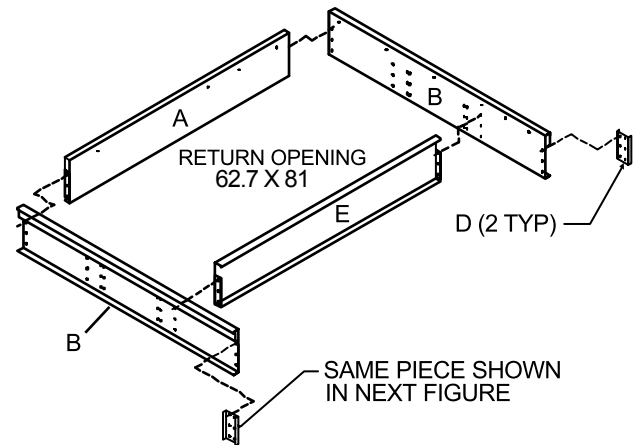
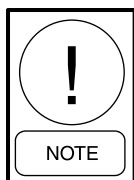


FIG 1 -

LD08519a

3. Layout the curb pieces shown at the end of the previous section.
4. Install the 3/8" bolts on both ends of Brace Panels (E) through the designated holes on Side Panels (B) making sure the corners are flush and square as shown on Figure 2. Tighten the hardware securely.

Place the curb in the proper location.



Make sure the curb section is "IN SQUARE".

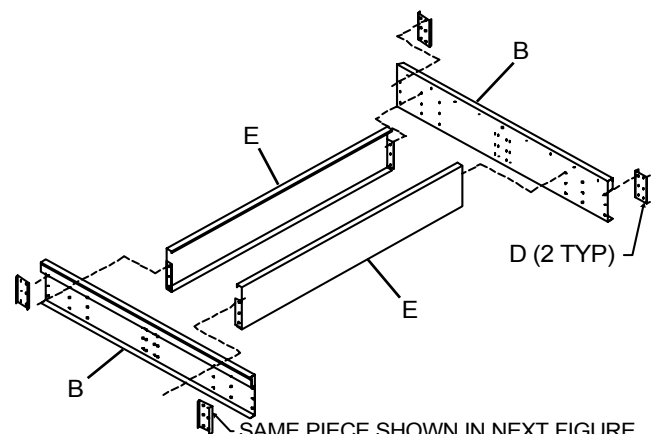
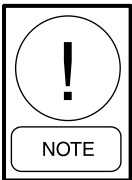


FIG 2 -

LD08563

- Layout the curb pieces as shown at the end of the previous section.
- Install the 3/8" bolts on both ends of End Panels (A) and Supply Panels (C) through the designated holes in Side Panels (B) and End Panels (A). Make sure the corners are flush and square as shown in Figure 3. Tighten the hardware securely.

Place the curb in the proper location.



Each section of the curb is to be connected with the provided splice channels as shown in illustrations.

- Take the two extra End Panels (F) and bolt back to back, then locate at the end of the condenser section, as shown on Figure 5.
- Install 3/4 x 1-1/4" foam gasket on top of all curb surfaces.



All dimensions are critical to ensure proper fit of the unit to the curb. All dimensions are from the "Flat Side" of the curb panels with the exception of "Outside" curb dimensions.

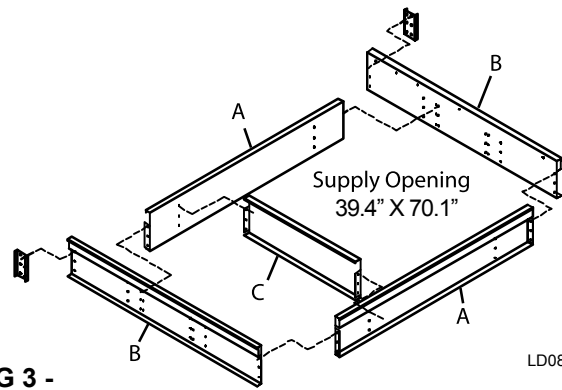


FIG 3 -

LD08543a

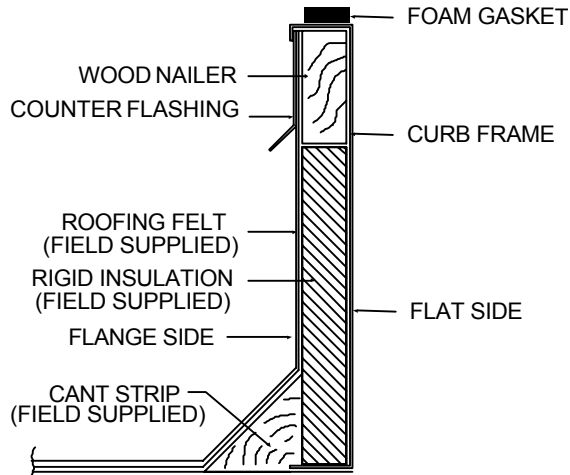


FIG 4 -

LD08544

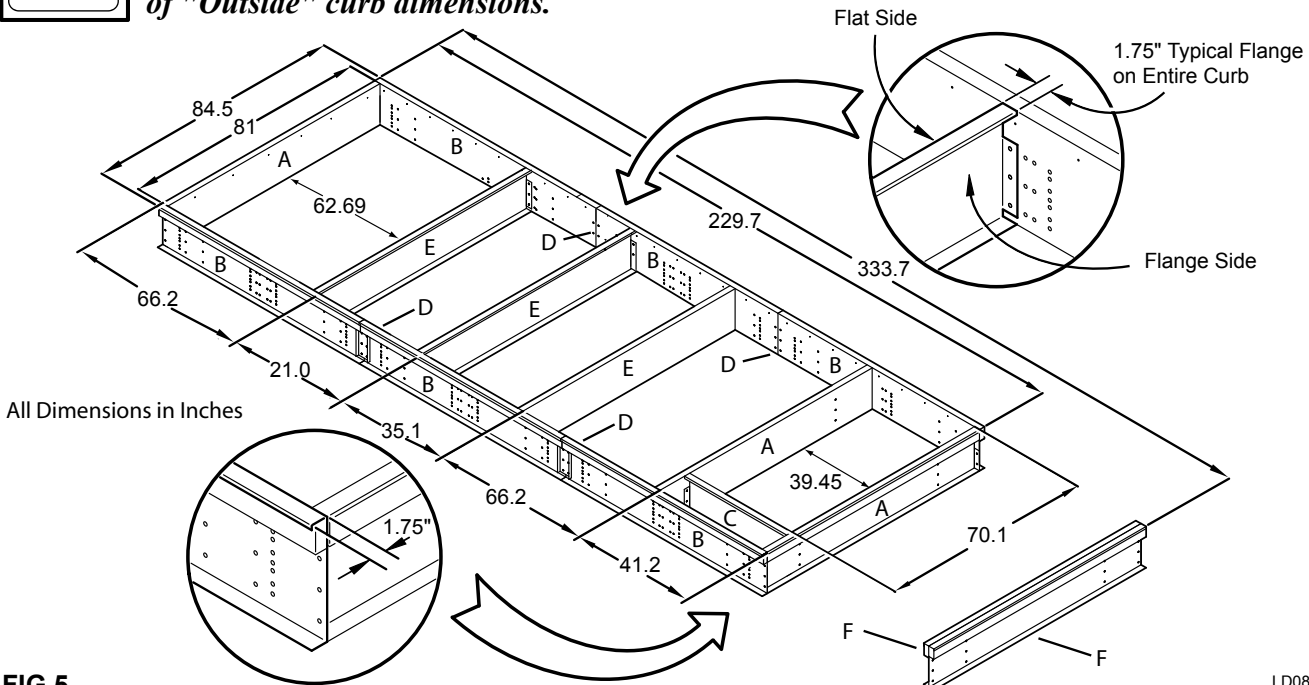


FIG 5 -

LD08545a

