

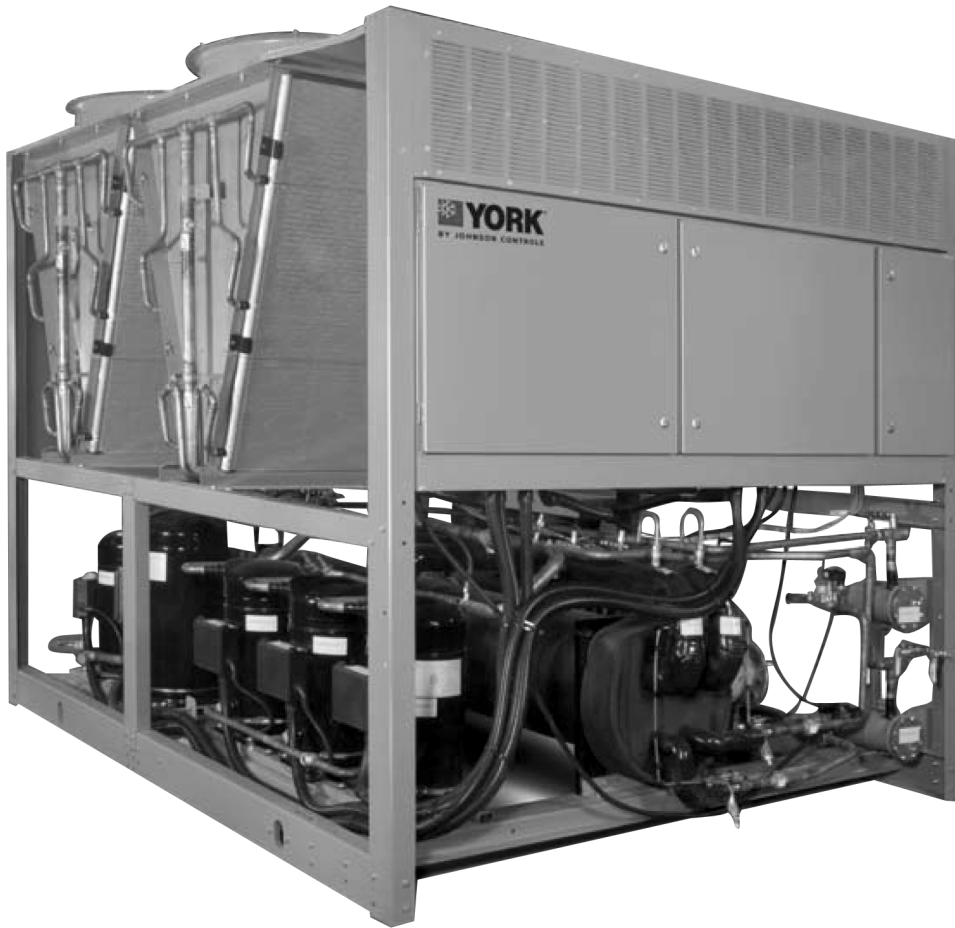


YLAA AIR COOLED LIQUID CHILLERS
WITH SCROLL COMPRESSORS

INSTALLATION OPERATION
& MAINTENANCE MANUAL

FORM NO.:150.72-NOM1.EN(0612)

YLAA0195HE/YE-YLAA0515HE/YE
Cooling Capacities:196kW to 521kW



License No: XK06-015-00244



Table of Contents

1. General Chiller Information and Safety	1-1	4.17 Control Circuit Transformer	4-7
1.1 Introduction	1-1	4.18 Remote Emergency Stop Device	4-8
1.2 Warranty	1-1	4.19 Control Wiring - Voltage Free Contact	4-8
1.3 Standards for Safety	1-1	4.20 Chilled Liquid Pump Starter	4-8
1.4 Fluorinated Greenhouse Gases	1-1	4.21 Run Contacts.	4-8
1.5 Responsibility for Safety	1-2	4.22 Alarm Contacts	4-8
1.6 About this manual	1-2	4.23 Control Wiring - System Inputs	4-8
1.7 Misuse of Equipment	1-2	4.24 Flow Switch	4-9
1.8 Safety Labels	1-3	4.25 Remote Start/Stop	4-9
1.9 Material Safety Data	1-5	4.26 Remote Reset of Chilled Liquid Setpoint	4-9
2. Specification	2-1	5.27 Remote Load Limiting	4-9
2.1 Compressors	2-1	4.28 Fan Full Speed Inhibit	4-9
2.2 Refrigerant Circuits	2-1	4.29 EMS Analogue Input	4-9
2.3 Evaporator	2-1	4.30 BACnet MS/TP	4-9
2.4 Air Cooled Condensers	2-2	4.31 Connection Diagram	4-9
2.5 Power and Controls Panels	2-2	4.32 Isolator Types	4-10
2.6 Microprocessor Controls	2-2	5. Commissioning	5-1
2.7 Accessories and Options	2-3	5.1 Preparation	5-1
2.8 Refrigerant Flow Diagram	2-5	6. Unit Operation	6-1
2.9 Component Location Diagram	2-6	6.1 General Description	6-1
2.10 Nomenclature	2-7	6.2 Start-up	6-1
3. Transportation, Handling and Storage	3-1	6.3 Normal running and cycling	6-1
3.1 Delivery and Storage	3-1	6.4 Shutdown	6-1
3.2 Inspection	3-1	7. Maintenance	7-1
3.3 Moving the unit	3-1	7.1 General Requirements	7-1
3.4 Typical Lifting Arrangement	3-2	7.2 Daily Maintenance	7-1
3.5 Lifting Weights	3-3	7.3 Scheduled Maintenance	7-1
4. Application and Installation Data	4-1	7.4 Evaporator In-Service Inspection	7-2
4.1 Location Requirements	4-1	8. Trouble Shooting	8-1
4.2 Outdoor installations	4-1	8.1 Competent Persons Trouble Shooting Guide	8-1
4.3 Indoor installations	4-1	8.2 Sensor Calibration Charts	8-3
4.4 Operating in low ambient conditions	4-2	9. Technical Data	9-1
4.5 High static fan ductwork connection	4-2	9.1 Evaporator pressure drop graph	9-1
4.6 Location Clearances	4-2	9.2 Operating Limitations - HE Models	9-2
4.7 Pipework Connection	4-4	9.3 Fan Power Data	9-3
4.8 Pipework Arrangement	4-5	9.4 Physical Data - HE Models	9-3
4.9 Chilled Liquid System	4-5	9.5 Electrical Data HE Models	9-4
4.10 Connection Types and Sizes	4-5	9.6 Dimensions	9-5
4.11 Heat Recovery System	4-6	10. Spare Parts	10-1
4.12 Water Treatment	4-6	10.1 Recommended Spares	10-1
4.13 Refrigerant Relief Valve Piping	4-6	10.2 Recommended Compressor Oil	10-1
4.14 Electrical Connection	4-7	10.3 Associated Drawings	10-1
4.15 Power Wiring	4-7	11. Decommissioning, Dismantling and Disposal	11-1
4.16 Single Point Power Supply Wiring	4-7	11.1 General	11-1

1. General Chiller Information and Safety

1.1 Introduction

YORK YLAA chillers are manufactured to the highest design and construction standards to ensure high performance, reliability and adaptability to all types of air conditioning installations.

The unit is intended for cooling water or glycol solutions and is not suitable for purposes other than those specified in this manual.

This manual contains all the information required for correct installation and commissioning of the unit, together with operating and maintenance instructions. The manuals should be read thoroughly before attempting to operate or service the unit.

All procedures detailed in the manuals, including installation, commissioning and maintenance tasks must only be performed by suitably trained and qualified personnel.

The manufacturer will not be liable for any injury or damage caused by incorrect installation, commissioning, operation or maintenance resulting from a failure to follow the procedures and instructions detailed in the manuals.

1.2 Warranty

YORK warrants all equipment and materials against defects in workmanship and materials for a period of eighteen months from date of shipment, or twelve months from commissioning, whichever occurs first unless labor or extended warranty has been purchased as part of the contract.

The warranty is limited to parts only replacement and shipping of any faulty part, or sub-assembly, which has failed due to poor quality or manufacturing errors. All claims must be supported by evidence that the failure has occurred within the warranty period, and that

the unit has been operated within the designed parameters specified.

All warranty claims must specify the unit model, serial number, order number and run hours/starts. Model and serial number information is printed on the unit identification plate.

The unit warranty will be void if any modification to the unit is carried out without prior written approval from YORK.

For warranty purposes, the following conditions must be satisfied:

The initial start of the unit must be carried out by trained personnel from an Authorized YORK Service Centre.

Only genuine YORK approved spare parts, oils, coolants, and refrigerants must be used.

All the scheduled maintenance operations detailed in this manual must be performed at the specified times by suitably trained and qualified personnel.

Failure to satisfy any of these conditions will automatically void the warranty.

1.3 Standards for Safety

YLAA chillers are designed and manufactured within an EN ISO 9001 accredited organisation and in conformity with the following safety standards:

- GB150 or GB151
- GB/T18430
- JBB654

1.4 Fluorinated Greenhouse Gases

- This equipment contains fluorinated greenhouse gases covered by the Kyoto Protocol.
- The global warming potential of the refrigerant

(R410A) used in this unit is 1720.

- The refrigerant quantity is stated in the Physical Data table of this document.
- The fluorinated greenhouse gases in this equipment may not be vented to the atmosphere.
- This equipment should only be serviced by qualified technicians.

1.5 Responsibility for Safety

Every care has been taken in the design and manufacture of the unit to ensure compliance with the safety requirements listed above. However, the individual operating or working on any machinery is primarily responsible for:

Personal safety, safety of other personnel, and the machinery.

Correct utilization of the machinery in accordance with the procedures detailed in the manuals.

1.6 About this manual

The following symbols are used in this document to alert the reader to areas of potential hazard.



A WARNING is given in this document to identify a hazard, which could lead to personal injury. Usually an instruction will be given, together with a brief explanation and the possible result of ignoring the instruction.



A CAUTION identifies a hazard which could lead to damage to the machine, damage to other equipment and/or environmental pollution. Usually an instruction will be given, together with a brief explanation and the possible result of ignoring the instruction.



A NOTE is used to highlight additional where there are no special safety implications.

The contents of this manual include suggested best working practices and procedures. These are issued for guidance only, and they do not take precedence over the above stated individual responsibility and/or local safety regulations.

This manual and any other document supplied with the unit are the property of YORK which reserves all rights. They may not be reproduced, in whole or in part, without prior written authorization from an authorized YORK representative.

1.7 Misuse of Equipment

Suitability for Application

The unit is intended for cooling water or glycol solutions and is not suitable for purposes other than those specified in these instructions. Any use of the equipment other than its intended use, or operation of the equipment contrary to the relevant procedures may result in injury to the operator, or damage to the equipment.

The unit must not be operated outside the design parameters specified in this manual.

Structural Support

Structural support of the unit must be provided as indicated in these instructions. Failure to provide proper support may result in injury to the operator, or damage to the equipment and/or building.

Mechanical Strength

The unit is not designed to withstand loads or stresses from adjacent equipment, pipework or structures. Additional components must not be mounted on the unit. Any such extraneous loads may cause structural failure and may result in injury to the operator, or damage to the equipment.

General Access

There are a number of areas and features, which may be a hazard and potentially cause injury when working

on the unit unless suitable safety precautions are taken. It is important to ensure access to the unit is restricted to suitably qualified persons who are familiar with the potential hazards and precautions necessary for safe operation and maintenance of equipment containing high temperatures, pressures and voltages.

Pressure Systems

The unit contains refrigerant vapor and liquid under pressure, release of which can be a danger and cause injury. The user should ensure that care is taken during installation, operation and maintenance to avoid damage to the pressure system. No attempt should be made to gain access to the component parts of the pressure system other than by suitably trained and qualified personnel.

Electrical

The unit must be earthed. No installation or maintenance work should be attempted on the electrical equipment without first switching power OFF, isolating and locking off the power supply. Servicing and maintenance on live equipment must only be performed by suitably trained and qualified personnel. No attempt should be made to gain access to the control panel or electrical enclosures during normal operation of the unit.

Rotating Parts

Fan guards must be fitted at all times and not removed unless the main power supply has been isolated. If ductwork is to be fitted, requiring the wire fan guards to be removed, alternative safety measures must be taken to protect against the risk of injury from rotating fans.

Refrigerants and Oils

Refrigerants and oils used in the unit are generally nontoxic, non-flammable and non-corrosive, and pose no special safety hazards. Use of gloves and safety glasses is, however, recommended when working on the unit. The build up of refrigerant vapor, from a leak for example, does pose a risk of asphyxiation in confined or enclosed spaces and attention should be given to good ventilation.

High Temperature and Pressure Cleaning

High temperature and pressure cleaning methods (e.g. steam cleaning) should not be used on any part of the pressure system as this may cause operation of the pressure relief device(s). Detergents and solvents, which may cause corrosion, should also be avoided.

1.8 Safety Labels

The following labels are fixed to each unit to give instruction, or to indicate potential hazards which may exist.



White symbol on blue background
For safe operation, read the instructions first



Black symbol on yellow background
Warning: This machine may start automatically without prior warning



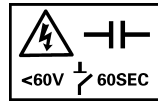
Black symbol on yellow background
Warning: Hot surface



Black symbol on yellow background
Warning: Safety relief valve may discharge gas or liquid without prior warning



Black symbol on yellow background
Warning: Isolate all electrical sources of supply before opening or removing the cover, as lethal voltages may exist



Power Factor Correction fitted Warning:
On isolating the supply it may take up to 60 seconds for the capacitor voltage to fall below 60 volts



Black symbol on yellow background
General attention symbol
Black symbol on yellow background

1.9 Material Safety Data

Refrigerant Safety Data R410A:	
COMPOSITION/INFORMATION ON INGREDIENTS	
Components Material	PENTAFLUOROETHANE (HFC-125) DIFLUOROMETHANE (HFC-32)
CAS Number	354-33-6 75-10-5
%	50 50
HAZARDS IDENTIFICATION	
Potential Health Effects	Inhalation of high concentrations of vapour is harmful and may cause heart irregularities, unconsciousness, or death. Intentional misuse or deliberate inhalation may cause death without warning. Vapour reduces oxygen available for breathing and is heavier than air. Liquid contact can cause frostbite. At flame temperatures, this material can decompose to hydrogen fluoride which can be lethal at much lower concentrations.
Human Health Effects	Overexposure to the vapours by inhalation may include temporary nervous system depression with anaesthetic effects such as dizziness, headache, confusion, incoordination, and loss of consciousness. Higher exposures to the vapours may cause temporary alteration of the heart's electrical activity with irregular pulse, palpitations, or inadequate circulation. Gross overexposure may be fatal. Skin contact with the liquid may cause frostbite. Individuals with preexisting diseases of the central nervous or cardiovascular system may have increased susceptibility to the toxicity of increased exposures.
Carcinogenicity Information	None of the components present in this material at concentrations equal to or greater than 0.1% are listed by IARC, NTP, OSHA or ACGIH as a carcinogen.
FIRST AID MEASURES	
Inhalation	If inhaled, immediately remove to fresh air. Keep person calm. If not breathing, give artificial respiration. If breathing is difficult, give oxygen. Call a physician.
Skin Contact	Flush area with lukewarm water. Do not use hot water. If frostbite has occurred, call a physician.
Eye Contact	In case of contact, immediately flush eyes with plenty of water for at least 15 minutes. Call a physician.
Ingestion	Do not induce vomiting. Give plenty of water in sips
Notes to Physicians	THIS MATERIAL MAY MAKE THE HEART MORE SUSCEPTIBLE TO ARRHYTHMIAS. Catecholamines such as adrenaline, and other compounds having similar effects, should be reserved for emergencies and then used only with special caution.
FIRE FIGHTING MEASURES	
Flammable Properties	Flash Point : No flash point Flammable Limits in Air, % by Volume: LEL : None per ASTM E681 UEL : None per ASTM E681 Autoignition: Not determined
Fire and Explosion Hazards	Cylinders may rupture under fire conditions. Decomposition may occur. Contact of welding or soldering torch flame with high concentrations of refrigerant can result in visible changes in the size and colour of torch flames. This flame effect will only occur in concentrations of product well above the recommended exposure limit, therefore stop all work and ventilate to disperse refrigerant vapours from the work area before using any open flames. R-410A is not flammable in air at temperatures up to 100 deg C (212 deg F) at atmospheric pressure. However, mixtures of R-410A with high concentrations of air at elevated pressure and/or temperature can become combustible in the presence of an ignition source. R-410A can also become combustible in an oxygen enriched environment (oxygen concentrations greater than that in air). Whether a mixture containing R-410A and air, or R-410A in an oxygen enriched atmosphere becomes combustible depends on the inter-relationship of 1) the temperature 2) the pressure, and 3) the proportion of oxygen in the mixture. In general, R-410A should not be allowed to exist with air above atmospheric pressure or at high temperatures; or in an oxygen enriched environment. For example: R-410A should NOT be mixed with air under pressure for leak testing or other purposes.

Refrigerant Safety Data R410A:	
Extinguishing Media	As appropriate for combustibles in area.
Fire Fighting Instructions	Cool cylinder with water spray or fog. Self-contained breathing apparatus (SCBA) is required if cylinders rupture and contents are released under fire conditions. Water runoff should be contained and neutralized prior to release.
ACCIDENTAL RELEASE MEASURES	
Safeguards (Personnel)	NOTE: Review FIRE FIGHTING MEASURES and HANDLING (PERSONNEL) sections before proceeding with clean-up. Use appropriate PERSONAL PROTECTIVE EQUIPMENT during clean-up.
Accidental Release Measures	Ventilate area, especially low or enclosed places where heavy vapours might collect. Extinguish open flames. Use self-contained breathing apparatus (SCBA) for large spills or releases. Eliminate electrical sources.
HANDLING AND STORAGE	
Handling (Personnel)	Avoid breathing vapour. Avoid liquid contact with eyes and skin. Use with sufficient ventilation to keep employee exposure below recommended limits. See Fire and Explosion Data section.
Storage	Clean, dry area. Do not heat above 52 deg C (125 deg F).
EXPOSURE CONTROLS/PERSONAL PROTECTION	
Engineering Controls	Avoid breathing vapours. Avoid contact with skin or eyes. Use with sufficient ventilation to keep employee exposure below the recommended exposure limit. Local exhaust should be used if large amounts are released. Mechanical ventilation should be used in low or enclosed places.
Personal Protective Equipment	Impervious gloves should be used to avoid prolonged or repeated exposure. Chemical splash goggles should be available for use as needed to prevent eye contact. Under normal manufacturing conditions, no respiratory protection is required when using this product provided exposure is maintained at or below occupational limits. Self-contained breathing apparatus (SCBA) is required if a large release occurs.
Exposure Guidelines	Applicable Exposure Limits PENTAFLUOROETHANE (HFC-125) PEL (OSHA) : None Established TLV (ACGIH) : None Established AEL * (DuPont) : 1000 ppm, 8 & 12 Hr. TWA WEEL (AIHA) : 1000 ppm, 4900 mg/m ³ , 8 Hr. TWA DIFLUOROMETHANE (HFC-32) AEL * (DuPont) : 1000 ppm, 8 & 12 Hr. TWA WEEL (AIHA) : 1000 ppm, 8 Hr. TWA * AEL is DuPont's Acceptable Exposure Limit. Where governmentally imposed occupational exposure limits which are lower than the AEL are in effect, such limits shall take precedence.
PHYSICAL AND CHEMICAL PROPERTIES	
Physical Data	Boiling Point : - 60.8 F (-51.6 C) @ 1 atm Vapour Pressure : 239.7 psia 25 C (77 F) % Volatiles : 100 WT% Evaporation Rate : (Cl4 = 1) Greater than 1 Solubility in Water : Not determined Odour : Slight ethereal Form : Liquefied gas Colour : Clear, colourless Specific Gravity : 1.066 @ 25 C (77 F)
STABILITY AND REACTIVITY	
Chemical Stability	Material is stable. However, avoid open flames and high temperatures.
Incompatibility with Other Materials	Incompatible with active metals, alkali or alkaline earth metals--powdered Al, Zn, Be, etc.
Decomposition	Decomposition products are hazardous. This material can be decomposed by high temperatures (open flames, glowing metal surfaces, etc.) forming hydrofluoric acid and possibly carbonyl fluoride. These materials are toxic and irritating. Contact should be avoided.

Refrigerant Safety Data R410A:	
Polymerization	Polymerization will not occur.
Other Hazards	Decomposition : Decomposition products are hazardous. This material can be decomposed by high temperatures (open flames, glowing metal surfaces, etc.) forming hydrofluoric acid, and possibly carbonyl halides.
TOXICOLOGICAL INFORMATION	
Animal Data	<p>The blend is untested.</p> <p>HFC-125 Inhalation 4-hour ALC: >709,000 ppm in rats Single exposure to high doses caused: Lethargy. Laboured breathing. Weak cardiac sensitization, a potentially fatal disturbance of heart rhythm caused by a heightened sensitivity to the action of epinephrine. Lowest-Observed-Adverse-Effect-Level for cardiac sensitization: 100,000 ppm. Repeated exposure caused: No significant toxicological effects. No-Observed-Adverse-Effect-Level(NOEL): 50,000 ppm</p> <p>ADDITIONAL TOXICOLOGICAL EFFECTS: No animal data are available to define the following effects of this material: carcinogenicity, reproductive toxicity. In animal testing this material has not caused developmental toxicity. Tests have shown that this material does not cause genetic damage in bacterial or mammalian cell cultures, or in animals. This material has not been tested for its ability to cause permanent genetic damage in reproductive cells of mammals (not tested for heritable genetic damage).</p> <p>HFC-32 Inhalation 4 hour-ALC: > 520,000 ppm in rats Single exposure caused: Lethargy. Spasms. Loss of mobility in the hind limbs. Other effects include weak cardiac sensitization, a potentially fatal disturbance of heart rhythm caused by a heightened sensitivity to the action of epinephrine. 250,000 ppm. Repeated exposure caused pathological changes of the lungs, liver, spleen, kidneys. In more recent studies repeated exposure caused: No significant toxicological effects. No-Observed-Effect-Level (NOEL): 49,100 ppm. No animal data are available to define the following effects of this material: carcinogenicity, reproductive toxicity. Animal data show slight fetotoxicity but only at exposure levels producing other toxic effects in the adult animal. Tests have shown that this material does not cause genetic damage in bacterial or mammalian cell cultures, or in animals. This material has not been tested for its ability to cause permanent genetic damage in reproductive cells of mammals (not tested for heritable genetic damage).</p>
DISPOSAL CONSIDERATIONS	
Waste Disposal	Comply with Federal, State, and local regulations. Reclaim by distillation or remove to a permitted waste disposal facility.
TRANSPORTATION INFORMATION	
Shipping Information	<p>DOT/IMO/IATA Proper Shipping Name : Liquefied Gas, N.O.S. (Pentafluoroethane and Difluoromethane) Hazard Class : 2.2 UN No. : 3163 Label(s) : Nonflammable Gas Shipping Containers : Tank Cars. Cylinders. Ton Tanks</p>

Oil Safety Data YORK 'V' Oil:	
Section 1 Substance Product Information	
Product Trade Name: YORK "V" Oil. Chemical Name: Carboxylic Ester.	
Section 2 Components and Hazard Statement	
This product is non-hazardous. This material has no known hazards under applicable laws.	
Section 3 Safe Handling and Storage	
Handling: Keep containers closed when not in use. Wash thoroughly after handling. Empty container contains product residue which may exhibit Storage: No special storage precautions required.	
Section 4 Physical Data	
Appearance: Clear liquid. Boiling Point: Not Determined. Vapour Pressure: Not Determined. Specific Gravity (water=1): 0.97 @ 15.6°C. Volatiles, Percent by Volume: Unknown. Odour: Mild. Solubility in Water: Insoluble. Evaporation Rate: Not Determined.	
Section 5 Fire and Explosion Hazards	
Flash Point: > 232°C, 450°F COC (Minimum). Flammable Limits: not established. Autoignition Temperature: no data. Extinguishing Media: CO2, dry chemical or foam. Water can be used to cool and protect exposed material. Unusual Fire and Explosion Hazards: Toxic fumes, gases or vapours may evolve on burning. Special Fire Fighting Techniques: Firefighters should use approved self-contained breathing apparatus. Water may cause splattering. Material will	
Section 6 Reactivity Data	
Stability: Material is normally stable at moderately elevated temperatures and pressures. Hazardous Polymerization: Will not occur. Incompatible Materials: Strong acids. Strong bases. Strong oxidizing agents. Decomposition Temperature: Not Determined. Thermal Decomposition: Smoke, carbon monoxide, carbon dioxide, aldehydes and other products of incomplete combustion.	
Section 7 Health Hazard Data	
First Aid Procedures	
Ingestion: DO NOT INDUCE VOMITING. If conscious, give 2 glasses of water. Get immediate medical attention. Eyes: Flush with water at least 15 minutes. Get medical attention if eye irritation develops or persists. Skin: Wash with soap and water. Get medical attention if irritation develops. Launder contaminated clothing before reuse. Inhalation: Remove exposed person to fresh air if adverse effects are observed. Additional Information: Note to physician: Treat symptomatically.	
Section 8 Personal Protection Information	
Respiratory Protection: Use respirator with an organic vapour cartridge if exposure limit is exceeded. Ventilation: Use with adequate ventilation. Protective Gloves: Neoprene. Eye/Face Protection: Safety glasses. Clothing: Long sleeve shirt is recommended.	
Section 9 Spill or Leak Procedures	
Spill Procedures: Personal Protective Equipment must be worn, see Personal Protection Information (Section 8). Ventilate area if spilled in	
Section 10 Waste Disposal Methods	
This material, if discarded, should be disposed of in a licensed facility in accordance with local regulations.	

Thermal & Acoustic Materials Data	
Health Hazard & First Aid	Toxicity Index <10 to NES713 Issue 3 (1991): Non-hazardous, non-toxic. No first aid necessary.
Stability / Reactivity	Stable.
Handling / Use / Disposal	No special handling precautions required. Dispose of according to local laws and regulations governing non-biodegradable non-hazardous solid wastes.
Fire & Explosion	Flammability rating Class 1 to BS 476 pt 7: Non-flammable. If forced to burn, combustion products are typically over 95% carbon dioxide and carbon monoxide.

Page Left Intentionally Blank

2. Specification

YLAA air-cooled chillers are completely factory assembled with all interconnecting refrigerant piping and wiring ready for field installation. The unit is pressure tested, evacuated, and fully factory charged with refrigerant R410A and oil in each of the independent refrigerant circuits. After assembly, an operational test is performed with water flowing through the evaporator to ensure that each refrigerant circuit operates correctly.

The unit structure is manufactured from heavy-gauge, galvanised steel coated with baked-on powder paint (Champagne (RAL 7006, Munsell No. 9.8YR4.36/1.2))

YLAA chillers are designed and manufactured within an EN ISO 9001 accredited organisation and in conformity with the following safety standards:

- GB150 or GB151
- GB/T 18430.1
- GB8654

2.1 Compressors

The unit has suction-cooled, hermetic scroll compressors. High efficiency is achieved through a controlled orbit and the use of advanced scroll geometry. The compressors incorporate a compliant scroll design in both the axial and radial directions. All rotating parts are statically and dynamically balanced.

The compressor motors have integral protection against overloads that will automatically reset. Starting is direct on line, and soft start is available as an option.

The compressors are switched On and Off by the unit microprocessor to provide capacity control. Each compressor is fitted with a crankcase strap heater. All compressors are mounted on isolator pads to reduce transmission of vibration to the rest of the unit.

The motor terminal boxes have IP 54 weather protection.

2.2 Refrigerant Circuits

Two independent refrigerant circuits are provided on each unit. Each circuit uses copper refrigerant pipe formed on computer controlled bending machines to reduce the number of brazed joints resulting in a reliable and leak resistant system.

Liquid line components include: a service valve with charging port, a high absorption removable core filterdrier, a solenoid valve, a sight glass with moisture indicator and a thermal expansion valve. Liquid lines between the expansion valve and the cooler are insulated with flexible, closed-cell foam.

Suction line components include: a pressure relief valve, a pressure transducer and a service valve. Suction lines are insulated with flexible, closed-cell foam.

Discharge lines include service and isolation ball valves, a high-pressure cutout switch, a pressure transducer and a pressure relief valve.

2.3 Evaporator

The 2-pass dual circuit shell and tube type direct expansion (DX) evaporator has refrigerant in the tubes and chilled liquid flowing through the baffled shell. The waterside (shell) design working pressure of the cooler is 10.3 bar g. The refrigerant side (tubes) design working pressure is 27.6 bar g. The refrigerant side is protected by pressure relief valve(s).

Water Connection to the evaporator is via flange connections.

2.4 Air Cooled Condensers

The ambient coils are seamless copper tubes, arranged in staggered rows, mechanically expanded into coated aluminium fins. Integral sub-cooling is included. The design working pressure is 45 bar.

Each condenser coil is a single piece all aluminium construction including headers, tubes and fins to avoid galvanic corrosion due to dissimilar metals. Coils and headers are brazed as one piece. Integral subcooling is included. The design working pressure is 45 bar.

The condenser fans have metal ‘sickle’ blades integrated into the rotor of an external rotor motor. They are designed for maximum efficiency and statically and dynamically balanced for vibration free operation. They are directly driven by independent motors, and positioned for vertical air discharge. The fan guards are constructed from heavy-gauge, corrosion resistant, coated steel.

The IP55 fan motors are the totally enclosed air-over type with permanently lubricated double-sealed ball bearings.

2.5 Power and Controls Panels

All power and controls are contained in an IP55 cabinet with hinged, latched and gasket sealed outer doors. The power panel includes:

- **SINGLE-POINT SUPPLY TERMINAL BLOCK**
Includes enclosure, terminal-block and interconnecting wiring to the compressors. Separate external protection must be supplied, by others, in the incoming compressor-power wiring.
- Factory mounted compressor contactors and compressor fuses provide short circuit protection. Overload protection for each compressor is provided by inherent motor winding temperature sensing and a trip module.

- Factory mounted fan contactors and fuses provide short circuit protection. Overload protection for each fan is provided by a inherent motor winding temperature device.
- Factory mounted control transformer to convert the unit supply voltage to 110 V - 1 ϕ - 50 Hz for the control system.
- Control supply fuses and connections for a remote emergency stop device. The control panel includes:
- A Liquid Crystal Display (two display lines of twenty characters per line) with Light Emitting Diode backlighting for easy viewing
- A Colour coded 12-button keypad
- Customer terminal blocks for control inputs and liquid flow switch.

2.6 Microprocessor Controls

The microprocessor control includes:

- Automatic control of compressor start/stop, anticoincidence and anti-recycle timers, automatic pumpdown on shutdown, evaporator pump and unit alarm contacts. Automatic reset to normal chiller operation after power failure.
- Remote water temperature setpoint reset via a pulse width modulated (PWM) input signal or up to two steps of demand (load) limiting
- Software is loaded into the microprocessor controller via a SD card, with programmed setpoints retained in a lithium battery backed real time clock (RTC) memory.
- Forty character liquid crystal display, with description available in five languages (English, French, German, Spanish or Italian)

Programmable setpoints:

- Chilled liquid temperature setpoint and range
- Remote reset temperature range
- Set daily schedule/holiday for start/stop
- Manual override for servicing
- Low and High ambients cutouts

- Low liquid temperature cutout
- Low suction pressure cutout
- High discharge pressure cutout
- Anti-recycle timer (compressor start cycle time)
- Anti-coincident timer (delay compressor starts)

Displayed Data:

- Return and leaving liquid temperature
- Low leaving liquid temperature cutout setting
- Low ambient temperature cutout setting
- Ambient air temperature
- Metric or Imperial data
- Discharge and suction pressure cutout settings
- System discharge and suction pressures
- Anti-recycle timer status for each compressor
- Anti-coincident system start timer condition
- Compressor run status
- No cooling load condition
- Day, date and time
- Daily start/stop times
- Holiday status
- Automatic or manual system lead/lag control
- Lead system definition
- Compressor starts & operating hours (each compressor)
- Status of evaporator heater and fan operation
- Run permissive status
- Number of compressors running
- Liquid solenoid valve status
- Load & unload timer status
- Water pump status

System Safeties:

Cause individual compressors to perform auto shut down and require manual reset in the event of 3 trips in a 90-minute time period

- High discharge pressure
- Low suction pressure
- High-pressure switches
- Motor protector

Unit Safeties:

They are automatic reset and cause compressor to shut down

- Low leaving chilled liquid temperature
- Under voltage
- Loss of liquid flow (through flow switch)

Alarm Contacts:

- Low leaving chilled liquid temperature
- Low voltage
- Low battery
- High discharge pressure (per system)
- Low suction pressure (per system)

2.7 Accessories and Options

Language LCD and Keypad

English, French, German, Italian and Spanish unit LCD read out and keypad available. Standard Language is English.

Heat Recovery

Stainless steel, dual refrigerant circuit, plate heat exchanger with Victaulic water connections.

38 mm Evaporator Insulation

Double thickness insulation provided for enhanced efficiency, and low temperature applications.

Flow Switch

Vapour Proof, paddle-type with 1"NPT connection for upright mounting in horizontal pipe. This flow switch or its equivalent must be supplied with each unit to protect the evaporator from loss of liquid flow (Field Mounted)

Flow switch installation & debugging guide

1. Before installation, please carefully check the flow switch, package in good condition, no damage and distortion. If there is any problem, contact the company.
2. Flow switches can be installed in horizontal tubes or vertical pipes in which the liquid flows upwardly, but can not be installed in pipes in which the liquid flows downwardly. When installing the pipes in which the liquid flows upwardly, the effects of gravity should be taken into account.
3. Flow switches must be installed in a straight pipe, the two sides should have at straight-line distance at least five times the diameter, at the same time, and we must pay attention to that the direction of flow in pipes must be consistent with the direction of the arrow on the controller. Its connector should be in the location where there is easy for wiring.
4. At the time of installation and wiring, please note the following:
 - a. It is absolutely forbidden to touch the bottom panel of the water flow switch with the wrench, which leads to the distortion and malfunction.
 - b. Cut off the power supply in the installation and adaptation, to avoid electrical shock and damage to the device.
 - c. In wire connection, it is forbidden to adapt the other nuts except for the micro-touch switch terminal and the grounding nut. When adapt the micro-touch switch, be aware of over hitting, which leads to the position move of the micro-touch switch and the malfunction of the flow switch.
 - d. When grounding, the special grounding nut is needed. No dismantling the screw at will, it can lead to the switch distortion and malfunction.
 - e. The flow switch set when out of the factory is the minimum value, and can't be set below the minimum set to avoid the failure of the flow switch. After the installation, by pressing the flow switch

lever for several times for checking . Once it founds there is no “snap” when the lever is springing back , you should rotate screws clock wise until the reply “snap” sounds.

5. According to the measured value by the flow meter, confirm if the flow switch and the system connected to it are in normal operation. When the value is below 60 % of the unit rating flow, turn off the flow switch. Observe for 3 operating periods, and close the crust of the flow switch in time.

Low Sound (LS) Unit

Includes compressor acoustic blanket (factory fit).

Unit Wire Enclosure

Welded wire mesh guards over condenser coils and around the bottom of the unit (field or factory mounted options available).

Neoprene Pads Isolators

Recommended for normal installations (Field mounted)

25 mm Spring Isolators

Level adjustable, spring and cage type isolators for mounting under the unit base rails (Field mounted)

Single-Point NON-Fused Disconnect Switch

Unit-mounted disconnect switch(es) with external , lockable handle (in compliance with Article 440-14 of N.E.C.), can be supplied to isolate the unit power voltage for servicing . Separate external fusing must be supplied , by others in the power wiring , which must comply with the National Electrical Code and/or local codes.

Single-Point Circuit Breaker

A unit mounted circuit breaker with external, lockable handle (in compliance with N.E.C. Article 440-14) ; can be supplied to isolate the power voltage for servicing.(This option includes the Single-Point Power connection.

Control Transformer

Converts unit power voltage to 230-1-50 . Factory mounting includes primary and secondary wiring between the transformer and the control panel . (Factory mounted).

Ambient Kit (Low)

Units will operate to -1°C (30.0°F). This accessory includes all necessary components to permit chiller operation to -18°C (0°F) .(This option includes the Discharge Pressure Transducer / Readout Capability option.) For proper head pressure control in applications blow -1°C (30°F) where wind gusts may exceed 8 kph (5 mph) , it is recommended that Optional Condenser Louvered Enclosure Panels also be included . (Factory-mounted)

Service isolation valve

Service suction and discharge (ball type) isolation valves are added to unit per system (discharge service ball-type isolation valve is standard on each circuit).

Differential Pressure Switch

Alternative to an above mentioned flow switch. Vaporproof SPDT, NEMA 3R switch, 10.3 barg (150 psig) DWP, -20°C to 93°C (0°F to 199°F) with 1"NPT (IPS) connection for upright mounting in horizontal pipe (This flow switch or equivalent must be furnished with each unit).

HYDRO-KIT

Factory installed Hydro-Kit suitable for water glycol systems with up to 35% glycol at leaving temperatures down to 20°F . The Hydro-kit option is available in a single or dual configuration (dual as standby duty only), with totally enclosed permanently lubricated pump motors.

The hydro-kit option comes standard with a pressure ports, suction guide, straindr and frost protection.

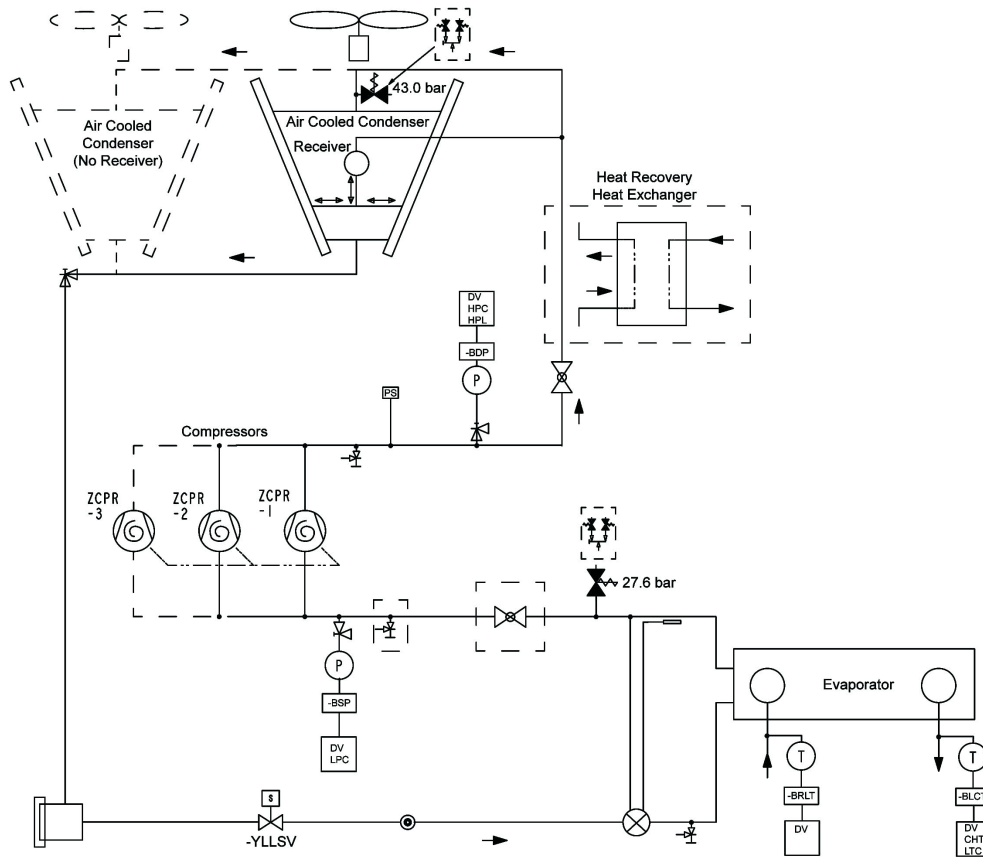
Compressor Acoustic Sound Blanket

Each compressor is individually enclosed by an acoustic sound blankets .The sound blankets are made with one layer of acoustical absorbent textile fiber of 15mm (5/8") thickness; one layer of anti-vibrating heavy material thickness of 3 mm (1/8") .Both are closed by two sheets of welded PVC, reinforced for temperature and UV resistance (Factory-mounted)

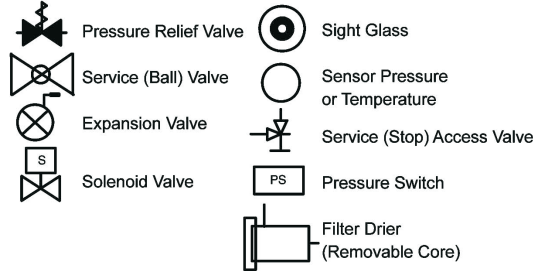
Ultra Quiet Fans

Lower Rpm , 8-pole fan motors are used with steeper-pitch fans .(Factory-mounted)

2.8 Refrigerant Flow Diagram



Components:



Control Functions:

- CHT - Chilled Liquid Temperature
- HPC - High Pressure Cutout
- LPC - Low Pressure Cutout
- HPL - High Pressure Load Limiting
- HTC - High Temperature Cutout
- LTC - Low Temperature Cutout
- DV - Display Value

Pressure Transducers:

- BDP Discharge Pressure
- BSP Suction Pressure

Temperature Sensors:

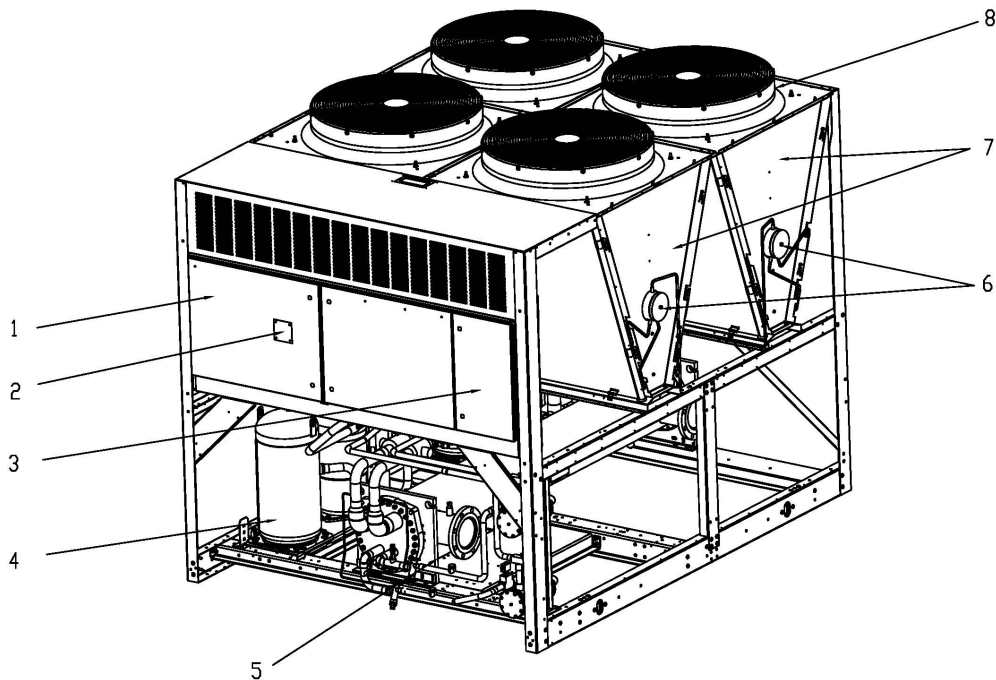
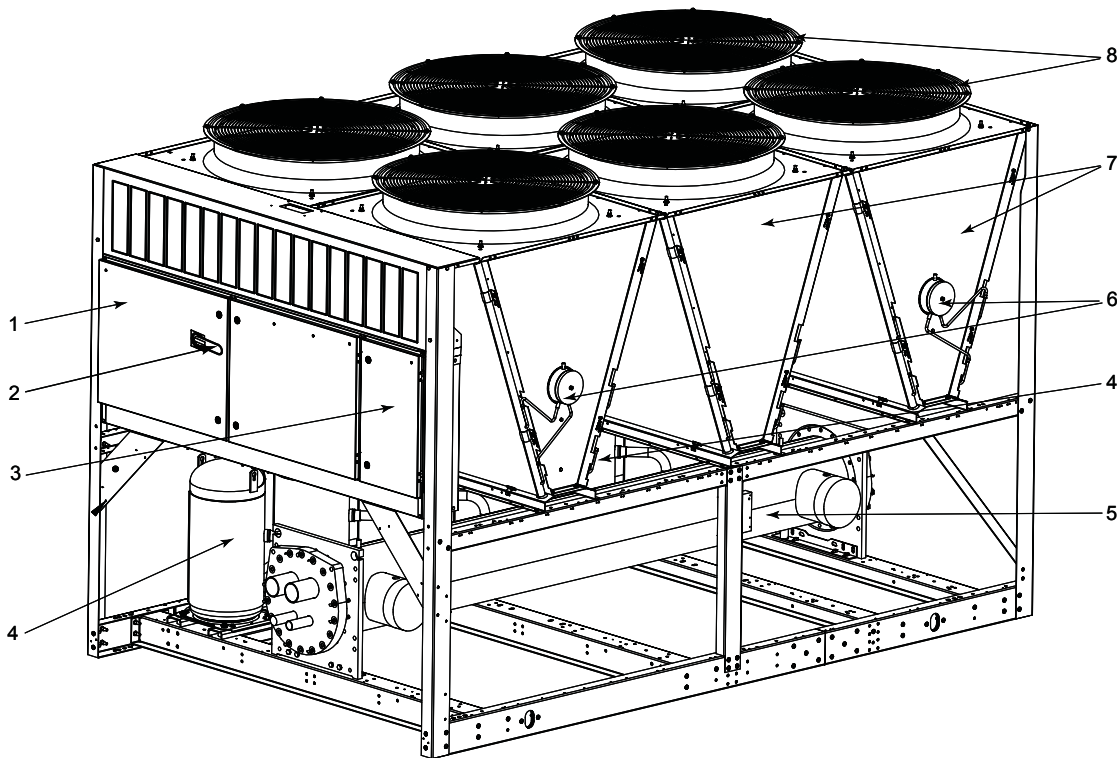
- BLCT Leaving Chilled Temperature
- BRLT Return Liquid Temperature

Solenoid Valves:

- YLLSV Liquid Line Solenoid Valve

Low pressure liquid refrigerant enters the evaporator and is evaporated and superheated by the heat energy absorbed from the chilled liquid. Low pressure vapour enters the compressor where pressure and superheat are increased. The high pressure vapour is fed to the air cooled condenser coil and fans where heat is removed. The fully condensed and subcooled liquid passes through the expansion valve where pressure is reduced and further cooling takes place before returning to the evaporator.

2.9 Component Location Diagram



- | | |
|-------------------------------|--------------|
| 1 Power Panel | 5 Evaporator |
| 2 Non-Fused Disconnect Switch | 6 Receiver |
| 3 Control Panel | 7 Condenser |
| 4 Compressor | 8 Fans |

2.10 Nomenclature

YLAA0390HE50XAA

<p>1 2 3 4 BASE PRODUCT TYPE</p> <p>Y : York L : Scroll A : Air Cooled A : European</p>	<p>5 6 7 8 NOMINAL CAPACITY</p> <p># # # # kW :0195 :0220 :0260 :0300 :0350 :0390 :0400 :0440 :0455 :0515</p>	<p>9 UNIT DESIGNATION</p> <p>Y : High Efficiency (Round Tube) H : High Efficiency</p>	<p>10 REFRIGERANT</p> <p>E : R-410A</p>	<p>11 12 13 VOLTAGE / STARTER</p> <p>5 0 : 380-415 / 3 / 50 X : Direct on Line T : Soft Start</p>	<p>14 15 DESIGN / DEVELOPMENT LEVEL</p> <p>A : Design Series A,B A : Development Level</p>
--	--	--	--	--	---

Page Left Intentionally Blank

3. Transportation, Handling and Storage

3.1 Delivery and Storage

To ensure consistent quality and maximum reliability, all units are tested and inspected before leaving the factory. Units are shipped completely assembled and containing refrigerant under pressure. Units are shipped without export crating unless crating has been specified on the Sales Order.

If the unit is to be put into storage, prior to installation, the following precautions should be observed:

Ensure that all openings, such as water connections, are securely capped.

The unit should be stored in a location where there is minimal activity in order to limit the risk of accidental physical damage.

To prevent inadvertent operation of the pressure relief devices the unit must not be steam cleaned.

It is recommended that the unit is periodically inspected during storage.

3.2 Inspection

Remove any transit packing and inspect the unit to ensure that all components have been delivered and that no damage has occurred during transit. If any damage is evident, it should be noted on the carrier's freight bill and a claim entered in accordance with the instructions given on the advice note.

Major damage must be reported immediately to your local YORK representative.

3.3 Moving the unit

Prior to moving the unit, ensure that the installation site is suitable for installing the unit and is easily capable of supporting the weight of the unit and all associated services.

The unit should be lifted using lifting lugs and a spreaderbar or frame of sufficient width to prevent damage to the unit from the lifting chains.



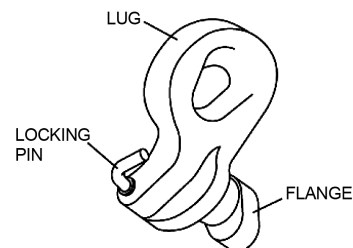
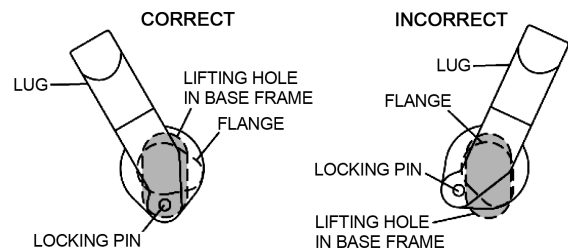
The unit must only be lifted by the base frame at the points provided. Never move the unit on rollers, or lift the unit using a fork-lift truck.



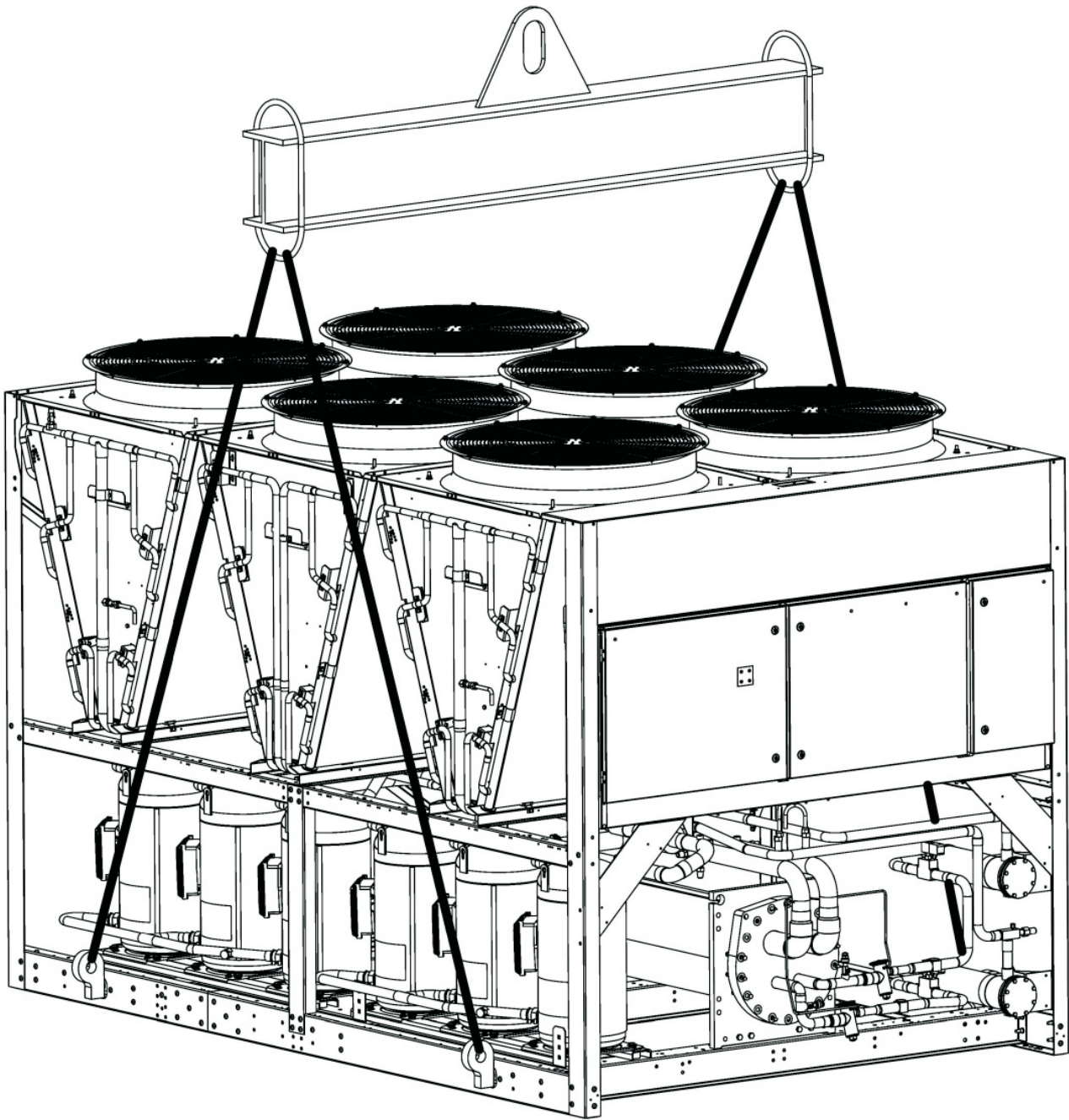
Care should be taken to avoid damaging the condenser coil fins when moving the unit.

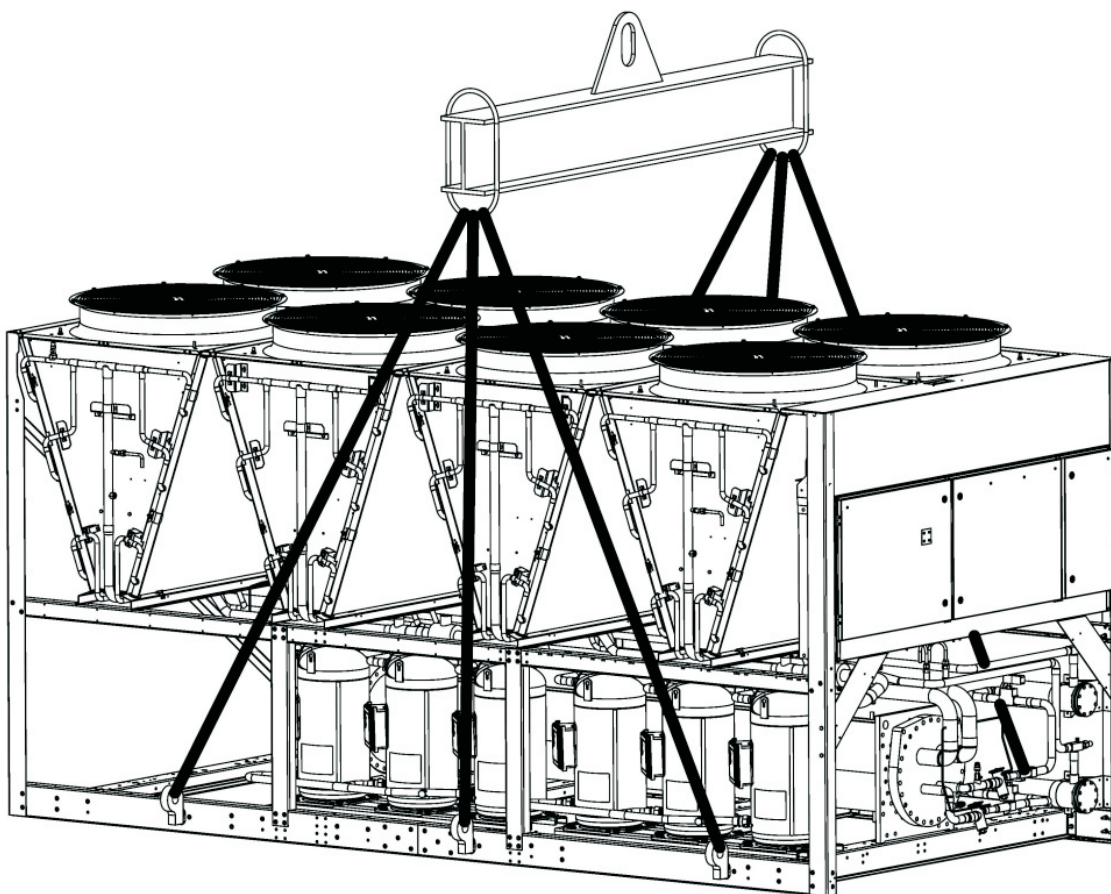
Units are provided with lifting holes in the base frame which accept the accessory lifting lug set.

The lugs should be inserted into the respective holes in the base frame and turned so that the spring loaded pin engages into the hole and the flanges on the lug lock behind the hole. The lugs should be attached to the cables/chains using shackles or safety hooks.



3.4 Typical Lifting Arrangement





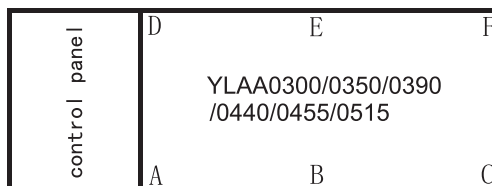
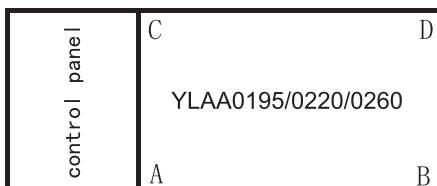
3.5 Lifting Weights

Weight Distribution on High Efficiency(Round Tube) Unit

Unit Model	Rigging Weight (kg)	A(kg)	B(kg)	C(kg)	D(kg)	E(kg)	F(kg)
YLAA195YE	2100	511	386	685	518	-	-
YLAA220YE	2082	485	392	666	538	-	-
YLAA260YE	2174	491	410	694	579	-	-
YLAA300YE	3046	447	522	293	643	783	358
YLAA350YE	3268	470	564	319	656	855	405
YLAA390YE	3529	573	327	557	820	593	659
YLAA440YE	3862	492	594	542	673	979	582
YLAA455YE	4014	474	624	551	648	1105	612
YLAA515YE	4219	517	648	581	683	1143	647

Weight Distribution on High Efficiency Unit

Unit Model	Rigging Weight(kg)	A(kg)	B(kg)	C(kg)	D(kg)	E(kg)	F(kg)
YLAA195HE	1980	482	364	646	488	-	-
YLAA220HE	2042	476	385	653	528	-	-
YLAA260HE	2134	482	402	681	568	-	-
YLAA300HE	2416	354	414	232	510	621	284
YLAA350HE	2673	384	461	261	536	699	332
YLAA390HE	2995	486	278	473	696	503	559
YLAA440HE	3706	472	570	520	646	940	559
YLAA455HE	3770	445	586	517	609	1038	575
YLAA515HE	4036	495	620	556	653	1093	619



Page Left Intentionally Blank

4. Installation

4.1 Location Requirements

To achieve optimum performance and trouble-free service, it is essential that the proposed installation site meet with the location and space requirements for the model being installed.

The clearances recommended are nominal for the safe and efficient operation and maintenance of the unit and power and control panels. Local Health and safety regulations, or practical considerations for service replacement of large components, may require larger clearances than those given in this manual.

4.2 Outdoor installations

The units can be installed at ground level on a suitable at level foundation easily capable of supporting the weight of the unit, or on a suitable rooftop location. In both cases an adequate supply of air is required. Avoid locations where the sound output and air discharge from the unit may be objectionable.

The location should be selected for minimum sun exposure and away from boiler flues and other sources of airborne chemicals that could attack the condenser coils and steel parts of the unit.

If located in an area accessible to unauthorized persons, steps must be taken to prevent access to the unit by means of a protective fence. This will help to prevent the possibility of vandalism, accidental damage, or possible harm caused by unauthorized removal of protective guards or opening panels to expose rotating or high voltage components.

For ground level locations, the unit must be installed on a suitable flat and level concrete base that extends to fully support the two side channels of the unit base frame. A one-piece concrete slab, with footings ex-

tending below the frost line is recommended. To avoid noise and vibration transmission, the unit should not be secured to the building foundation.

On rooftop locations, choose a place with adequate structural strength to safely support the entire operating weight of the unit and service personnel. The unit can be mounted on a concrete slab, similar to ground floor locations, or on steel channels of suitable strength. The channels should be spaced with the same centres as the unit side and front base rails. This will allow vibration isolators to be fitted if required. Isolators are recommended for rooftop locations. Any ductwork or attenuators fitted to the unit must not have a total static pressure resistance, at full unit air-flow, exceeding the capability of the fans installed in the unit.

4.3 Indoor installations

The unit can be installed in an enclosed plant room, provided the floor is level and of suitable strength to support the full operating weight of the unit. It is essential that there is adequate clearance for air flow to the unit. The discharge air from the top of the unit must be ducted away to prevent re-circulation of air within the plant room. If common ducts are used for fans, non-return dampers must be fitted to the outlet from each fan.

The discharge ducting must be properly sized with a total static pressure loss, together with any intake static pressure loss, less than the available static pressure capability for the type of fan fitted.

The discharge air duct usually rejects outside the building through a louvre. The outlet must be positioned to prevent the air being drawn directly back into the air intake for the condenser coils, as such re-circulation will affect unit performance.

4.4 Operating in low ambient conditions

If low cooling capacities are required, at lower ambient conditions (below -1°C), the refrigerant pressure will fall. To prevent operational problems the low ambient kit option should be used.

For efficient head pressure control in ambients below -1°C , where unusually high wind gusts are expected, it is recommended that, if the customer has not provided a wind break, the optional condenser louvred enclosure panels are included.

4.5 High static fan ductwork connection

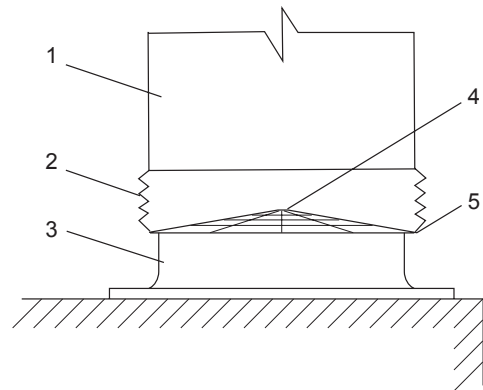
The following ductwork recommendations are intended to ensure satisfactory operation of the unit, when optional high static fans are used. Failure to follow these recommendations could cause damage to the unit, or loss of performance, and may invalidate the warranty. When ducting is to be fitted to the fan discharge it is recommended that the duct should be the same cross sectional area as the fan outlet and straight for at least 1 meter to obtain static regain from the fan.

Ductwork should be suspended with flexible hangers to prevent noise and vibration being transmitted to the structure. A flexible joint is also recommended between the duct attached to the fan and the next section for the same reason. Flexible connectors should not be allowed to concertina.

The unit is not designed to take structural loading. No significant amount of weight should be allowed to rest on the fan outlet flange, deck assemblies or condenser coil module. No more than 1 meter of light construction ductwork should be supported by the unit.

Where cross-winds may occur, any ductwork must be supported to prevent side loading on the unit. If the ducts from two or more fans are to be combined into a common duct, back-flow dampers should be fitted in the individual fan ducts. This will prevent re-circulation of air when only one of the fans is running.

Units are supplied with outlet guards for safety and to prevent damage to the fan blades. If these guards are removed to fit ductwork, adequate alternative precautions must be taken to ensure persons cannot be harmed or put at risk from rotating fan blades.



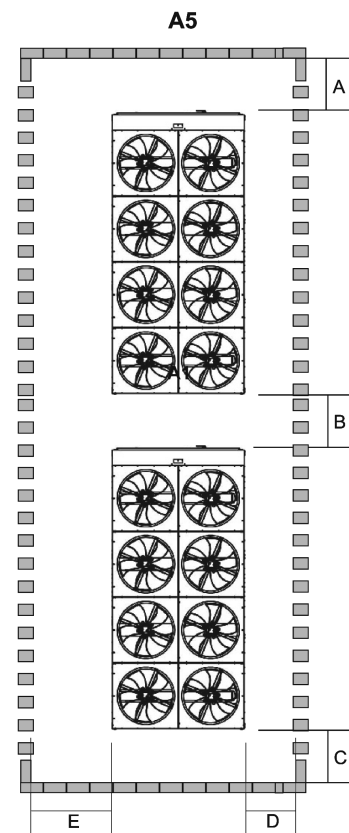
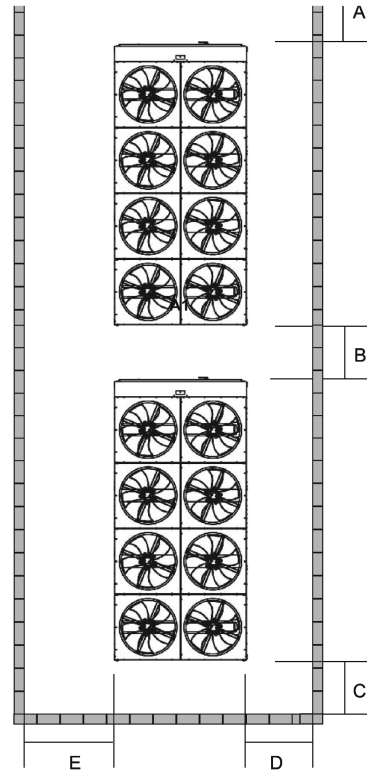
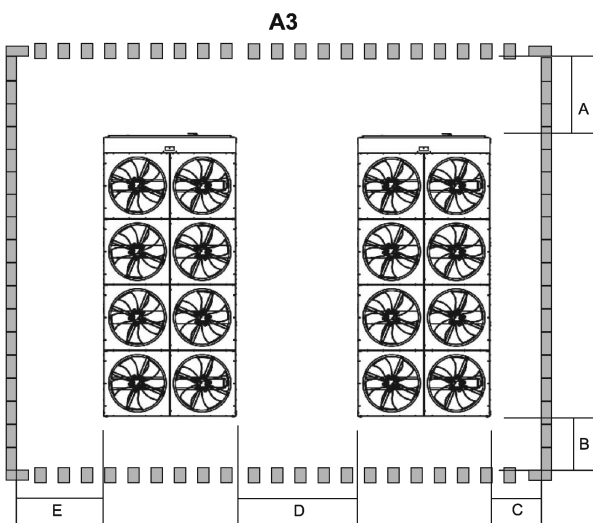
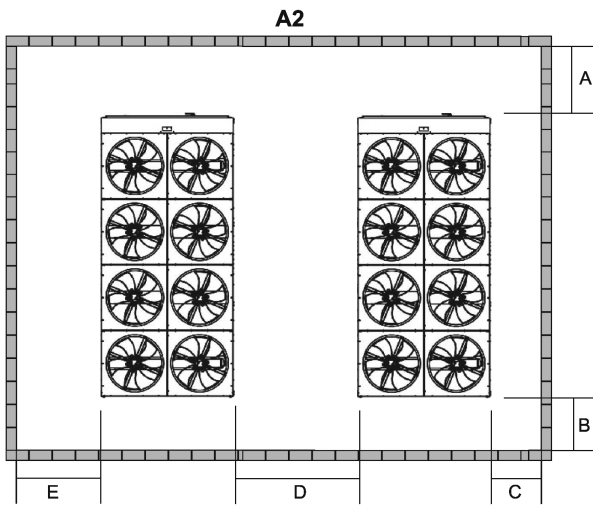
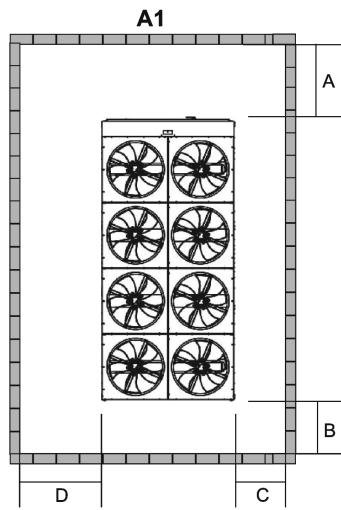
- | | |
|-----------------|----------------|
| 1 Solid Duct | 4 Fan Guard |
| 2 Flexible Duct | 5 Backing Ring |
| 3 Fan | |

4.6 Location Clearances

Adequate clearances around the unit(s) are required for the unrestricted air-flow for the air-cooled condenser coils and to prevent re-circulation of warm discharge air back onto the coils. If clearances given are not maintained, air-flow restriction or re-circulation will cause a loss of unit performance, an increase in power consumption, and may cause the unit to malfunction. Consideration should also be given to the possibility of down drafts, caused by adjacent buildings, which may cause re-circulation or uneven unit air-flow.

For locations where significant cross winds are expected, such as exposed roof tops, an enclosure of solid or louvre type is recommended to prevent wind turbulence interfering with the unit air-flow.

When units are installed in an enclosure, the enclosure height should not exceed the height of the unit on more than one side. If the enclosure is of louvred construction, the same requirement of static pressure loss applies as for ducts and attenuators stated above. Where accumulation of snow is likely, additional height must be provided under the unit to ensure normal airflow to the unit.



YLAA	Dim. (m)	YLAA-HE/YE				
		0195/0220/0260	0300	0350/0390	0455/0515	0455/0515
Arrangement A1 Solid Walls	A	1.2	1.2	1.2	1.2	1.2
	B	0.8	0.8	0.8	0.8	0.8
	C	0.8	0.8	0.8	0.8	0.8
	D	1.4	1.4	1.4	1.4	1.4
Arrangement A2 Solid Walls	A	1.2	1.2	1.2	1.2	1.2
	B	0.8	0.8	0.8	0.8	0.8
	C	0.8	0.8	0.8	0.8	0.8
	D	1.9	2.2	2.7	2.7	3.0
	E	1.4	1.4	1.4	1.4	1.4
Arrangement A3 Louvres on 2 walls	A	1.2	1.2	1.2	1.2	1.2
	B	0.8	0.8	0.8	0.8	0.8
	C	0.8	0.8	0.8	0.8	0.8
	D	1.7	1.8	2.3	2.3	2.8
	E	1.4	1.4	1.4	1.4	1.4
Arrangement A4 Solid Walls	A	1.2	1.2	1.2	1.2	1.2
	B	1.2	1.2	1.2	1.2	1.2
	C	0.8	0.8	0.8	0.8	0.8
	D	1.0	1.3	1.5	1.5	1.7
	E	1.4	1.4	1.5	1.5	1.7
Arrangement A5 Louvres on 2 walls	A	1.2	1.2	1.2	1.2	1.2
	B	1.2	1.2	1.2	1.2	1.2
	C	0.8	0.8	0.8	0.8	0.8
	D	0.8	0.8	0.8	0.8	0.8
	E	1.4	1.4	1.4	1.4	1.4

4.7 Pipework Connection

The following piping recommendations are intended to ensure satisfactory operation of the unit. Failure to follow these recommendations could cause damage to the unit, or loss of performance, and may invalidate the warranty.

If an optional Hydrokit has not been selected, a flow switch must be installed in the customer pipework at the outlet of the evaporator as shown in the arrangement diagrams, and wired back to the control panel using screened cable. This is to prevent damage to the evaporator caused by inadequate liquid flow. To prevent turbulent flow, there must be straight pipework either side of the flow switch equal in length to at least 5 times the diameter of the pipe.

The flow switches used must have gold plated contacts for low voltage/current operation

Alternatively, a differential pressure switch fitted across an orifice plate may be used, preferably of the high/low limit type.

The liquid pumps installed in the pipework systems should discharge directly into the unit heat exchanger sections of the system. The pumps require an auto-starter (by others) to be wired to the control panel.

Pipework and fittings must be separately supported to prevent any loading on the heat exchanger(s). Flexible connections are recommended which will also minimize transmission of vibrations to the building. Flexible connections must be used if the unit is mounted on anti-vibration mounts as some movement of the unit can be expected in normal operation.

Pipework and fittings immediately next to the heat exchanger(s) should be readily demountable to en-

able cleaning prior to operation, and to facilitate visual inspection of the exchanger nozzles.

Each heat exchanger must be protected by a strainer, preferably of 20 mesh, fitted as close as possible to the liquid inlet connection, and provided with a means of local isolation.

The heat exchanger(s) must not be exposed to flushing velocities or debris released during flushing. It is recommended that a suitably sized by-pass and valve arrangement be installed to allow flushing of the pipework system. The by-pass can be used during maintenance to isolate the heat exchanger(s) without disrupting flow to other units.

Thermometer and pressure gauge connections should be provided on the inlet and outlet connections of each heat exchanger.

Drain and air vent connections should be provided at all low and high points in the pipework to permit drainage of the system, and to vent any air in the pipes.

Liquid systems at risk of freezing, due to low ambient temperatures, should be protected using insulation and heater tape and/or a suitable glycol solution. The liquid pumps must also be used to ensure liquid is circulated when the ambient temperature approaches freezing point. Insulation should also be installed around the heat exchanger nozzles.

Heater tape of 21 W/m under the insulation is recommended, supplied independantly and controlled by an ambient temperature thermostat set to switch on at approximately 2.2°C above the freezing temperature of the chilled liquid.

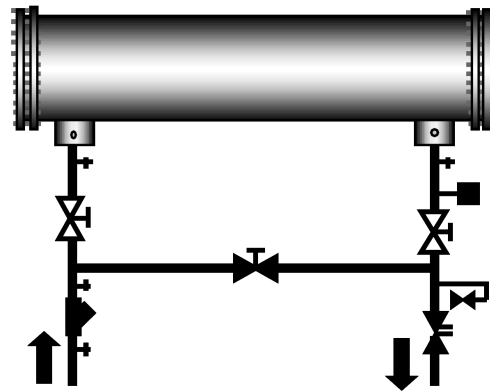
The evaporator is protected by two heater mats placed under the insulation, which are powered from the unit control system power supply. During cold weather when there is a risk of freezing, chiller power should

be left switched on to provide the freeze protection function unless the liquid systems have been drained.

4.8 Pipework Arrangement

The following are suggested pipework arrangements for single unit installations. For multiple unit installations, each unit should be piped as shown. These are recommendations of the Building Services Research Association.

4.9 Chilled Liquid System



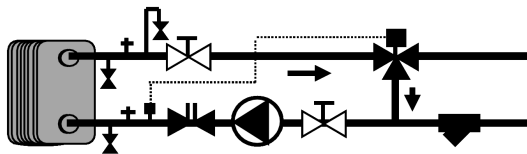
- † Pressure Tapping
- ⊠ Air vent
- Flow Switch
- ⊠ Isolating Valve – Normally Open
- ⊠ Isolating Valve – Normally Closed
- ⊠ Flow Regulating Valve
- ▼ Strainer

4.10 Connection Types and Sizes

Standard pipework connections are flange connections.

For connection sizes relevant to individual models refer to the physical data tables in this manual.

4.11 Heat Recovery System



- ⊕ Pressure Tapping
- ⊠ Air vent
- ⊙ Drain
- ⊞ Isolating Valve – Normally Open
- ⊞ 3 Way Control Valve
- ⊞ Flow Regulating Valve
- ⊞ Strainer

4.12 Water Treatment

The unit performance given in the Design Guide is based on a fouling factor of 0.018m²°C/kW . Dirt, scale, grease and certain types of water treatment will adversely affect the heat exchanger surfaces and therefore unit performance. Foreign matter in the water system(s) can increase the pressure drop, reducing the flow rate and causing potential damage.

Aerated, brackish or salt water is not recommended for use in the water systems. YORK recommends that a water treatment specialist be consulted to determine whether the proposed water composition will not affect the heat exchanger materials of carbon steel and copper. The pH value of the water flowing through the unit must be kept between 7 and 8.5.

Water quality requirements of the unit water system: Please strictly according to the water quality requirements of the unit water system to detect the water quality of the water system, so as to ensure that the water meets requirements of the table.

Item	Unit	Allowable value	Tendency	
			Corrosion	Fouling
PH (25°C)		7.0-8.5	○	
SO4-	ppm	< 100	○	
HCO3-/SO4-	ppm	> 1.0	○	
Cl-	ppm	< 50	○	
PO4	ppm	< 2.0	○	
NH3	ppm	< 0.5	○	
Free Chlorine	ppm	< 0.5	○	
Fe+++	ppm	< 0.5	○	
Mn++	ppm	< 0.05	○	
CO2	ppm	< 10	○	
H2S	ppb	< 50	○	
Temperature	°C	< 65	○	○
Oxygen content	ppm	< 0.1	○	
Total hardness	dH	4.8-8.5		○

Note:

1. Water quality should be inspected before unit installation and regularly during unit operation. The parameters of water quality should meet the demand as above form. Once the parameter is over the limit, the heat exchanger will leak for corrosion and is possible to have serious scale formation.
2. When the parameter of water quality in projects that trend to corrosion is over the limit for a long time, the heat exchanger will leak for corrosion. The unit cannot operate normally and use as usual.
3. When the parameter of water quality in projects that trend to scale formation is over the limit for a long time, heat exchanger will have serious scale, which effects heat exchange and drops the cooling (heating) capacity directly.
4. Users should take on the lost that comes from the unqualified users' water quality.

Glycol usage in System

1. Ethylene Glycol Correction Factors- The following factors are to be applied to the standard ratings for units cooling ethylene glycol.

ETHYLENE GOYCOL

% WEIGHT	TONS KW	COMPR	GPM°F /TON	PRESS DROP	FREEZE PT(F)
10	0.985	0.997	24.1	1.034	26
20	0.981	0.996	24.9	1.062	16
30	0.974	0.995	26.1	1.096	5
40	0.966	0.991	27.5	1.134	-10
50	0.957	0.989	29.1	1.172	-32

2. Propylene Glycol Correction Factors- The following factors are to be applied to the standard ratings for units cooling ethylene glycol.

PROPYLENE GLYCOL

% WEIGHT	TONS KW	COMPR	GPM°F /TON	PRESS DROP	FREEZE PT(F)
10	0.983	0.996	24.2	1.048	27
20	0.974	0.995	24.4	1.086	19
30	0.961	0.99	25.1	1.134	8
40	0.946	0.98	26.0	1.186	-5
50	0.928	0.984	27.2	1.247	-25

4.13 Refrigerant Relief Valve Piping

The evaporator is protected against internal refrigerant overpressure by refrigerant relief valves. A pressure relief valve is mounted on each of the main refrigerant lines connecting the evaporator to the compressors.

For indoor installations, pressure relief valves should be piped to the exterior of the building.

The size of any pipework attached to a relief valve must be of sufficient diameter so as not to cause resistance to the operation of the valve.

Unless otherwise specified by local regulations, the internal diameter depends on the length of pipe required and can be estimated with the following formula:

$$D5=1.447 \times L$$

Where:

D = minimum pipe internal diameter (cm)

L = length of pipe (m).

If relief pipework is common to more than one valve its cross sectional area must be at least the total required by each valve. Valve types should not be mixed on a common pipe. Precautions should be taken to ensure that the exit of relief valves/vent pipe remain clear of obstructions at all times.

4.14 Electrical Connection

The following connection recommendations are intended to ensure safe and satisfactory operation of the unit. Failure to follow these recommendations could cause harm to persons, or damage to the unit, and may invalidate the warranty.



No additional controls (relays, etc.) should be mounted in the control panel. Power and control wiring not connected to the control panel should not be run through the control panel. If these precautions are not followed it could lead to a risk of electrocution. In addition, electrical noise could cause malfunctions or damage the unit and its controls.

4.15 Power Wiring



These units are suitable for 380V/400V/415V 3~ 50Hz nominal supplies only.

All electrical wiring should be carried out in accordance with local regulations. Route properly sized cables to the cable entries in the bottom of the power panel.

In accordance with EN 60204 it is the responsibility of the user to install over current protection devices between the supply conductors and the power supply terminals on the unit.

To ensure that no eddy currents are set up in the power panel, the cables forming each 3 phase power supply must enter via the same cable entry.



All sources of supply to the unit must be taken via a common point of isolation (not supplied by YORK).

4.16 Single Point Power Supply Wiring

All models require one field provided 380V/400V/415V 3~ 50Hz+ PE (Protected Earth) supply to the unit with circuit protection.

Connect the 3-phase supply to the non-fused disconnect switch located in the power panel using M10 lugs. Connect the earth wire to the main protective earth terminal located in the power panel.

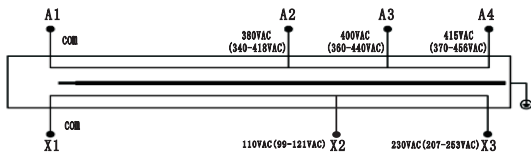
4.17 Control Circuit Transformer

The control circuit transformer (380V/400V/415V~ 50Hz) providing the 110 V~ 50 Hz supply to the unit control system is fitted in a separate enclosure mounted on top of the control panel.

Circuit transformer wiring is as follows.

POWER SUPPLY TRANSFORMER

TYPE: YLAA 415-400-380VAC/110VAC 50HZ 2000VA
 SAP:
 PN: 025-42916-000
 POWER SUPPLY INPUT: A1-A2: 380VAC 5.3A A1-A3: 400VAC 5A A1-A4: 415VAC 4.8A
 POWER SUPPLY OUTPUT: X1-X2: 110VAC 50HZ 18.2A X1-X3: 230VAC 50/60HZ 8.7A



Note: the detailed secondary voltage output of the transformer is depended on the unit configuration.

4.18 Remote Emergency Stop Device

If required, a remote emergency stop device may be wired into the unit. This device should be rated at 20 A amps, 110 V, AC-15. The device should be wired into terminals L and 5 in the power panel after removing the factory fitted link.

4.19 Control Wiring - Voltage Free Contact

All wiring to the voltage free contact terminal block requires a supply provided by the customer maximum voltage 254 Vac, 28 Vdc.

The customer must take particular care deriving the supplies for the voltage free terminals with regard to a common point of isolation. Thus, these circuits when used must be fed via the common point of isolation so the voltage to these circuits is removed when the common point of isolation to the unit is opened. This common point of isolation is not supplied by YORK.

It is recommended that the customer wiring to these terminals uses orange wires. This will ensure that circuits not switched off by the units supply disconnecting device are distinguished by colour, so that they can easily be indentified as live even when the unit disconnecting devices are off. The YORK voltage free contacts are rated at 125 VA.

All inductive devices (relays) switched by the YORK

voltage free contacts must have their coil suppressed using standard RC suppressors. If these precautions are not followed, electrical noise could cause malfunctions or damage to the unit and its controls.

4.20 Chilled Liquid Pump Starter

Terminals 23 and 24 close to start the liquid pump. This contact is closed if there is a ‘Leaving Liquid Temperature Cutout’ or any of the compressors are running or the daily schedule is not calling for a shut-down with the unit switch on.



The contact must be used to ensure that the pump is running in the event of a ‘Leaving Liquid Temperature Cutout’.

The pump contact will not close to run the pump if the unit has been powered up for less than 30 seconds, or if the pump has run in the last 30 seconds, to prevent pump motor overheating.

4.21 Run Contacts

Terminals 25 and 26 close to indicate that refrigerant system 1 is running and terminals 27 and 28 close to indicate that refrigerant system 2 is running.

4.22 Alarm Contacts

Each refrigerant system has a voltage-free normally open contact that will close when control power is applied to the panel, if no fault conditions are present. When a fault occurs which locks a system out, or there is a power failure the contact opens. To obtain a system alarm signal, connect the alarm circuit to terminals 29 and 30 for No. 1 system and terminals 31 and 32 for No. 2 system.

4.23 Control Wiring - System Inputs

All wiring to the control terminal block (nominal 30 Vdc) must be run in screened cable, with the screen

earthed at the panel end only. Run screened cable separately from mains cable to avoid electrical noise pick-up.

The voltage free contacts must be suitable for 30 Vdc (gold contacts recommended). If the voltage free contacts form part of a relay or contactor, the coil of the device must be suppressed using a standard RC suppressor. The above precautions must be taken to avoid electrical noise that could cause a malfunction or damage to the unit and its controls.

4.24 Flow Switch

A chilled liquid flow switch of suitable type must be connected to terminals 13 and 14 to provide adequate protection against loss of liquid flow.

4.25 Remote Start/Stop

Connect a remote switch to terminals 13 and 51 to provide remote start/stop control if required.

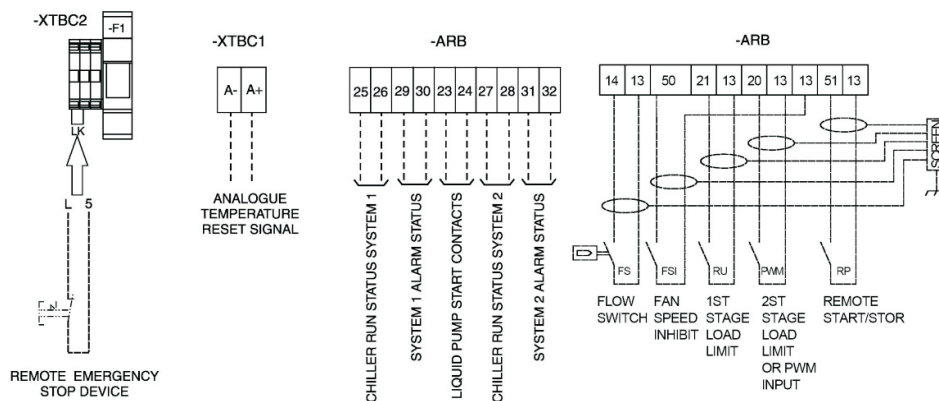
4.26 Remote Reset of Chilled Liquid Setpoint

The PWM input (terminals 13 and 20) allows reset of the chilled liquid setpoint by supplying a 'timed' contact closure.

4.27 Remote Load Limiting

Load limiting prevents the unit from loading beyond a

4.31 Connection Diagram



YLAA Customer Controls

desired value. The unit % load limit depends on the number of compressors on the unit. The load limit inputs to terminals 13 and 21 work in conjunction with the PWM input to terminals 13 and 20.

4.28 Fan Full Speed Inhibit



The fan full speed inhibit input is 30 Vdc and the customer voltage free contact and wiring must be suitable for 30 Vdc.

To reduce unit noise the fans can be limited to run at a maximum step of all fans in star (reduced speed) i.e. fan full speed is inhibited. Connect a customer voltage free contact to terminals 13 & 50 in the fan panel. The contact must be rated for 30 Vdc, connecting wiring need to be run in screened cable. When the contact is closed fan full speed inhibit is in effect.

4.29 EMS Analogue Input

Provides a means of resetting the leaving chilled liquid temperature from the BAS/EMS. Accepts 4 to 20 mA, 0 to 20 mA, 0 to 10 Vdc or 2-10 Vdc. Connect to terminal A+ and A-.

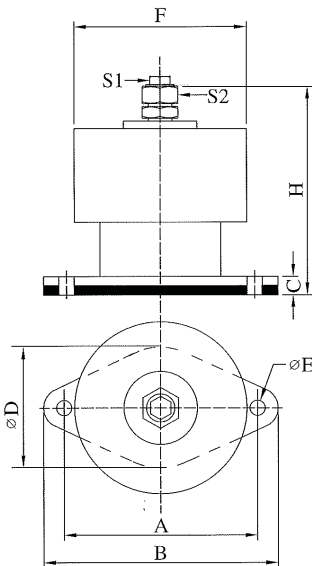
4.30 BACnet MS/TP

Enable communications with building protocol systems using BACnet protocol. Connect through standard RS485 port

4.32 ISOLATOR TYPES

Installation of Spring Isolator

1. Floor or steel frame should be level and smooth.
2. Lubricate the threads of adjusting bolt. Loosen the hold down bolts to allow for isolator adjustment.
3. Block the equipment 10mm (1/4" higher than the specified free height of the isolator. To use the isolator as blocking for the equipment, insert a 10mm (1/4" shim between the upper load plate and vertical uprights. Lower the equipment on the blocking or shimmed isolators.
4. Complete piping and fill equipment with water, refrigerant, etc.
5. Turn leveling bolt of first isolator four full revolutions and proceed to each mount in turn.
6. Continue turning leveling bolts until the equipment is fully supported by all mountings and the equipment is raised free of the spacer blocks or shims. Remove the blocks or shims.
7. Turn the leveling bolt of all mountings in either direction in order to level the installation.
8. Tighten the nuts on the hold down bolts.
9. Installation is now complete.



型号 MODEL	载荷 LOAD (kg)	载荷 LOAD (N)	变形量 DEFLECTION (±1mm)	竖向刚度 VERTICAL RIGIDITY k(kg/mm)	外形尺寸 OUTER SIZE (mm)								
					A	B	C	φ E	F	H	S1	S2	φ D
MHD-320	320	3136	25	12.80	165	200	13	12.5	147	165	M12×25	M20×60	104
MHD-450	450	4410	25	18.00	165	200	13	12.5	147	165	M12×25	M20×60	104
MHD-550	550	5390	25	22.00	165	200	13	12.5	147	165	M12×25	M20×60	104
MHD-650	650	6370	25	26.00	165	200	13	12.5	147	165	M12×25	M20×60	104
MHD-730	730	7154	25	29.20	165	200	13	12.5	147	165	M12×25	M20×60	104
MHD-810	810	7938	25	32.40	165	200	13	12.5	147	165	M12×25	M20×60	104
MHD-850	850	8330	25	34.00	165	200	13	12.5	147	165	M12×25	M20×60	104
MHD-920	920	9016	25	36.80	165	200	13	12.5	147	165	M12×25	M20×60	104
MHD-1050	1050	10290	25	42.00	165	200	13	12.5	147	165	M12×25	M20×60	104
MHD-1200	1200	11760	25	48.00	165	200	13	12.5	147	165	M12×25	M20×60	104
MHD-1350	1350	13230	25	54.00	165	200	13	12.5	147	165	M12×25	M20×60	104
MHD-1550	1550	15190	25	62.00	165	200	13	12.5	147	165	M12×25	M20×60	104
MHD-1650	1350	16170	25	66.00	165	200	13	12.5	147	165	M12×25	M20×60	104

Installation of Neoprene Mounts

It is not necessary to bolt the mountings to a concrete pad in most cases. Mountings should always be bolted to the chiller rails. When mountings and the chiller are installed on steel framing above the ground, the mountings should be bolted to the steel framework. Lower the chiller on to the mountings evenly to avoid placing excessive weight on individual isolators.

5. Commissioning

5.1 Preparation



Commissioning of this unit should only be carried out by YORK Authorised personnel.

The unit On/Off switch beneath the key pad in the electronic section of the control panel has been set to the Off position at the factory. This switch must remain in the Off position, preventing running of the unit until commissioned by Authorised personnel. If the switch has been set to the On position before commissioning then it must be reported to YORK otherwise the warranty may be invalidated.

Preparation - Power Off

The following checks should be made with the customer supply/supplies to the unit switched OFF.

Inspection: Inspect unit for installation damage. If found take action and/or repair as appropriate.

Refrigerant charge: Units are normally shipped as standard with a full refrigerant operating charge. Check that refrigerant pressure is present in both systems and that no leaks are apparent. If no pressure is present a leak test must be undertaken, the leak(s) located and repaired. Repaired systems must be evacuated with a suitable vacuum pump/recovery unit as appropriate to below 100 microns before charging.



Do not charge liquid refrigerant with static water in the evaporator. Care must also be taken to charge liquid refrigerant slowly to avoid excessive thermal stress at the charging point.

Once the vacuum is broken, charge with the full operating charge as given in Technical Data section.



Liquid sub-cooling measured at the liquid line should be between 8.5°C and 11°C at circuit full load. Subcooling is determined by the level of refrigerant charge in each system.

Valves: Ensure that the compressor discharge and suction service valves are set correctly (OPEN).

Compressor oil: The oil level in multiple scroll compressors (piped in parallel) must be checked directly after all compressors are shut down and have been allowed time to stabilise.

The oil level must be between the bottom and middle of the oil sight glass mounted in the oil equalising line between the compressors.

Fans: Check that all fans are free to rotate and are not damaged. Ensure blades are at the same height when rotated. Ensure fan guard is securely fixed.

Isolation/protection: Verify that all sources of electrical supply to the unit are taken from a point of isolation.

Control panel: Check the panel to see that it is free of foreign materials (wire, metal chips, etc.) and clean out if required.

Power connections: Check the customer power cables are connected correctly. Ensure that connections of power cables within the power panel to the non-fused switch disconnects are tight.

Earthing: Verify that the unit earth terminal is properly connected to a suitable earthing point. Ensure that all unit internal earth connections are tight.

Supply voltage: Verify that the site voltage supply corresponds to the unit requirement and is within the limits given in the Technical Data Section. The phase

imbalance should be less than 2% of the average voltage.

Switch Settings: Ensure that the unit On/Off toggle switch beneath the key pad in the electronic section of the control panel is set to OFF. Set the non-fused disconnect switch to ON. The customer's disconnection devices can now be set to ON.



The machine is now live!

Crankcase Heaters: Verify the heaters are energised.



Depending upon the ambient temperature the crankcase heaters must be on for 12 to 24 hours before start-up.

Water System: Verify that the chilled liquid system has been installed correctly, and has been commissioned with the correct direction of water flow through the evaporator. Inlet should be at the refrigerant pipework connection end of the evaporator. Purge air from the evaporator using the air vent mounted in the pipework.



Flow rates and pressure drops must be within the limits given in the Technical Data Section. Operation outside of these limits is undesirable and could cause damage.

Flow switch: Verify a chilled liquid flow switch is correctly fitted in the customer's pipework on the cooler outlet, and wired into the control panel correctly.

Temperature sensor(s): Ensure the leaving (-BLCT) and entering (-BECT) liquid temperature sensors are coated with heat conductive compound and are inserted in the water inlet and outlet sensor pockets of the cooler.

Control supply: Verify the control panel display is illuminated.

HP cut-out reset: Check that the hand reset mechanical high pressure cut-outs mounted on the discharge lines are at the correct setting and are reset.

Programmed options: Verify that the options factory programmed into the Microprocessor Control Centre are in accordance with the customer's order requirements by pressing the 'OPTIONS' key on the keypad and reading the settings from the display. Refer also to the Operating Instructions Manual for notes and explanation of messages.

Programmed settings: Ensure the system cut-out and operational settings are in accordance with operational requirements by pressing the 'PROGRAM' key (refer to Operating Instructions Manual).

Date & time: Press the 'CLOCK' key and set the date and time (refer to Operating Instructions Manual).

Start/Stop schedule: Programme the daily and holiday start/stop by pressing the 'SCHEDULE/ADVANCE DAY' key (refer to Operating Instructions Manual).

Setpoints: Set the required leaving chilled liquid temperature set-point and control range using the 'COOLING SETPOINTS' key (refer to Operating Instructions Manual).

Compressor Operation: Use the 'OPTIONS' key to switch off each refrigerant system in turn (refer to Operating Instructions Manual) and then check the compressors on the active system:

Connect a manifold gauge to each refrigerant circuit suction and discharge service valves and temporarily start each compressor and check that the discharge pressure rises and the suction pressure decreases to ensure that the compressors are operating in the correct direction. Any faults found must be corrected before starting the unit.

After completing the checks on both circuits, set both systems to on using the 'OPTIONS' key.

First Time Start-Up



During the commissioning period there should be sufficient heat load to run the unit under stable full load operation to enable the unit controls, and system operation to be set up correctly and a commissioning log taken.

Read the following section in conjunction with the Operating Instructions Manual, then proceed step by step as follows:

Interlocks: Verify that liquid is flowing through the evaporator and that heat load is present. Ensure that any remote run interlocks are in the run position and that the run schedule requires the unit to run or is overridden.

Start-up: Set the unit switch to the ON position to start the unit (there may be a few seconds delay before the first compressor starts because of the anti-recycle timer). Be ready when each compressor starts, to switch the unit off immediately if any unusual noises or other adverse conditions develop. Refer to the Technical Data Section for the normal operating sequence from start-up.

Refrigerant flow: When a compressor starts a flow of liquid refrigerant will be seen in the liquid line sight glass. After several minutes operation and providing a full charge of refrigerant is in the system, the bubbles will disappear and be replaced by a solid column of liquid. Check that the moisture indicator is satisfactory (Green).

System Operation: Use the 'OPER DATA' key to check the system pressures and temperatures.

Suction Superheat: Check suction superheat at

steady full system load only. It is important that no bubbles show in the liquid line sight glass. Measure suction temperature on the copper line about 150 mm before the compressor suction service valve. Measure suction pressure at the compressor service valve. Superheat should be 7°C to 10°C relative to the 'dew' temperature.

Thermal Expansion valve adjustment: The expansion valves are factory set and should not need adjustment. If any superheat values are out of range, the expansion valve adjusting screw should be adjusted no more than 1 turn at a time ('in' to increase superheat, 'out' to decrease superheat), allowing at least 10 minutes for the valve to stabilise before re-checking the value of superheat.

Subcooling: Check liquid subcooling at steady full compressor load only. Measure liquid line temperature on the copper line beside the main liquid line service valve. Measure liquid pressure at the liquid line service valve. Subcooling should be 8.5°C to 11 °C relative to the 'bubble' temperature. If subcooling is out of range add or remove refrigerant as required. Do not overcharge the unit.

General operation: After completion of the above checks for System 1 repeat the process for system 2. In addition, check that loading occurs as specified in the Technical Data Section and that general operation is correct.

Page Left Intentionally Blank

6. Unit Operation

6.1 General Description

The units are designed to work independently, or in conjunction with other equipment via a YORK building management system or other automated control system. When operating, the unit controls monitor the chilled liquid system temperatures at the unit and take the appropriate action to maintain the temperatures within desired limits. This action will involve running one or more compressors to match the cooling effect of the refrigerating systems to the heat load on the liquid system. The heat removed from the chilled liquid is then rejected from the air cooled condenser coils.

The following sections give an overview of the operation of the unit. For detailed information, reference should be made to the Operating Instructions for the unit.

6.2 Start-up

Check the main power supplies to the unit are 'ON', all refrigerant service valves are open (anti-clockwise one turn short of fully open) and chilled liquid flow has been established (unless the unit chilled liquid pump start control is being used, in which case just ensure the pump supply is on). Ensure that the system switches under the 'OPTIONS' key are in the 'ON' position.

Press the 'STATUS' key on the keypad and then switch the unit 'ON/OFF' switch below the keypad to the 'ON' position.

The controller will perform a pre-check to ensure that the daily/holiday schedule and any remote interlocks will allow the unit to run, all safety cut-outs are satisfied and that cooling load is required (i.e. that the chilled liquid temperature is outside the set limits). Any problems found by the pre-check will be displayed if present.

If no problems are present and cooling duty is required the lead compressor will start. The display will show the anti-coincidence timer status for the lag compressor.

6.3 Normal running and cycling

Once the unit has been started, all operations are fully automatic. After an initial period of operation with the lead compressor, the control system will adjust the unit load depending on the chilled liquid temperature and rate of temperature change. If high heat load is present, the controller will increase the capacity of the unit and start-up the next compressor.

If very little heat load is present, the lead compressor may continue to operate or may simply stop again to avoid overcooling the liquid. If the latter is the case, one compressor will restart automatically should the liquid temperature rise again.

When a compressor is running the controller monitors suction pressure, motor current, and various other system parameters such as discharge pressure, chilled liquid temperature, etc. Should any problems occur, the control system will immediately take appropriate action and display the nature of the fault (see Operating Instructions Manual).

6.4 Shutdown

The unit can be stopped at any time by switching the unit 'ON/OFF' switch just below the keypad to the 'OFF' position. Under normal conditions use the 'OPTIONS' key to switch off each refrigerant system in turn (refer to Operating Instructions Manual), to ensure a pumpdown is completed before each system stops. The compressor heaters will energise to prevent refrigerant condensing in the compressor rotors and to prevent the compressor oil becoming saturated with refrigerant.



To prevent damage to the unit the control supply to the compressor heaters should not be switched off, even when the unit is not required to run.

If mains power must be switched off, (for extended maintenance or a shutdown period), the compressor suction, discharge and liquid line service valves.

on both systems should be closed (clockwise) and if there is a possibility of liquid freezing due to low ambient temperatures, the cooler and condenser should be drained. The valves should be opened, the cooler and condenser refilled and the power must be switched on for at least 8 hours before the unit is restarted.

Page Left Intentionally Blank

7. Maintenance

7.1 General Requirements

The units have been designed to operate continuously provided they are regularly maintained and operated within the limitations given in this manual. Each unit should be included in a routine schedule of daily maintenance checks by the operator/customer, backed up by regular service inspection and maintenance visits by a suitably qualified Service Engineer.

It is entirely the responsibility of the owner to provide for these regular maintenance requirements and/or enter into a maintenance agreement with a YORK service organisation to protect the operation of the unit. If damage or a system failure occurs due to improper maintenance during the warranty period, YORK shall not be liable for costs incurred to return the unit to satisfactory condition.



This maintenance section applies to the basic unit only and may, on individual contracts, be supplemented by additional requirements to cover any modifications or ancillary equipment as applicable.



The Safety Section of this manual should be read carefully before attempting any maintenance operations on the unit. This section should be read in conjunction with the Unit Operation Section.

7.2 Daily Maintenance

The following maintenance checks should be carried out on a daily basis by the operator/customer. Please note that the units are not generally user serviceable and no attempt should be made to rectify faults or problems found during daily checks unless competent and equipped to do so. If in any doubt, contact your local YORK Service Centre.

Unit status: Press the 'STATUS' key on the

keypad and ensure no fault messages are displayed (refer to the Operating Instruction Manual for explanation of messages and the Trouble Shooting section for courses of action).

Operating conditions: Read the operating pressures and temperatures at the control panel using the 'OPER DATA' key and check that these are within the operating limitations given in the Operating Instructions Manual.

Refrigerant leaks: Visually check the cooler, air cooled condensers, compressors and pipework for damage and gas leaks.

Condenser Fan Motors: The fan motors are permanently lubricated and require no maintenance.

Airflow obstructions: Check the air cooled condenser coil intakes and adjacent areas are clear of foreign materials or obstructions e.g. paper, leaves, etc.

Compressor oil level: Check the compressor oil level when the compressor is operating normally. As long as we see oil level with the sight glass.



At shutdown the oil level can fall to the lower limit of the oil sight glass.

Compressor Oil Quality: The oil used in the compressors is pale in colour. If the oil colour darkens or exhibits a change in colour, this may be an indication of contaminants in the refrigerant system. If this occurs, an oil sample should be taken and analysed. If contaminants are present, the system must be cleaned to prevent compressor failure.

Refrigerant Charge: When a system starts up, or sometimes after a change of capacity, a flow of bubbles will be seen in the liquid line sight glass. After a few minutes of stable operation, the bubbles should

clear leaving just liquid refrigerant showing in the sight glass.

In addition to the checks listed above, periodic inspec-

tions of the unit should be carried out to ensure proper equipment operation. Items such as loose equipment, component operation, unusual noises, etc. should be investigated and corrected immediately.

7.3 Scheduled Maintenance

The maintenance operations detailed in the following table should be carried out on a regular basis by a suitably qualified Service Engineer. It should be noted that the interval necessary between each ‘minor’ and ‘major’ service can vary depending on, for instance, application, site conditions and expected operating schedule. Normally a ‘minor’ service should be carried out every three to six months and a ‘major’ service once a year. It is recommended that your local YORK Service Centre is contacted for recommendations for individual sites.

SERVICE SCHEDULE	MINOR SERVICE	MAJOR SERVICE All items under Minor Service plus:
Unit general:	Check thermal insulation. Check vibration isolators.	Check main structure. Check paint-work.
Refrigerant systems general:	Check relief valves. Check for pipework damage. Check for leaks. Check moisture indicator. Check suction superheat. Check liquid subcooling.	Check solenoid valves.
Compressors:	Check oil level. Check condition of oil.	
Evaporator:	Check water flow. Check water pressure drop. Check heater mats.	Check water pH / glycol strength.
Air cooled condensers:	Check for airflow obstructions. Check fins. Check fans and fan guards.	Brush fins. Check fan motor bearings.
Power & Control system general:	Check panel condition. Check mains and control wiring. Check sensor locations. Check mechanical HP cut-outs.	Check all connections. Check compressor contactors. Check fan contactors / overloads. Check sensor / transducer calibration. Check motor protectors. Check contactor contacts.
Microprocessor controls:	Check fault history. Check program settings. Check HP / LP cut-out function's. Check pump-down function. Check load / unload function.	Check fan control function. Check ambient cut-out function.

7.4 Evaporator In-Service Inspection

There is no corrosion on the refrigerant side therefore in-service inspection on the refrigerant side is not necessary.

For the water side, if the water used is treated in accordance with Section 4, in-service inspection is not necessary. In the design of the vessels used in the unit, a 1 mm corrosion allowance has been used to consider slight corrosion on the water side. This allowance is sufficient to cover the lifetime of the unit.

YORK believes that periodic in service proof testing (e.g.; hydro tests) is not required. However, YORK recognises that national regulations may require such testing to be conducted.

8. Trouble Shooting

8.1 Competent Persons Trouble Shooting Guide

PROBLEM	POSSIBLE CAUSE	ACTION
No display on panel — Unit will not operate	Mains supply to unit off. Emergency stop device off. No supply to -T1. No 24 Vac supply to microprocessor board. No 24 Vac output from Transformer -T1. Short circuit in wiring to temperature sensors or pressure transducers. Defective microprocessor board or display board.	Switch on mains supply if safe to do so. Check if remote emergency stop device is in the 'OFF' position. Turn to 'ON' position if safe to do so. Check wiring to -T1 and fuse -F1. Check wiring from -T1 to J14 microprocessor board. Change transformer -T1 Unplug connections at microprocessor board to isolate. Replace board after contacting Johnson Controls Service.
FLOW SWITCH OPEN displayed	No liquid flow through the cooler. Flow switch contacts are not made. Defective flow switch.	Ensure that liquid pumps are running. Valves are correctly set and flow is established. Check the flow switch is functional and is installed according to the manufacturers instructions. Note: On some systems the pump starter may be wired to the unit and controlled to start by the unit. Replace flow switch.
UNIT FAULT: LOW AMBIENT TEMP displayed	Ambient air temperature is lower than the programmed operating limit. Measured temperature is incorrect.	Use the 'OPER DATA' key to display the temperature and confirm that the displayed value is approximately correct. The warning message should clear when the ambient air temperature reaches the programmed operating limit. Check the programmed settings are correct for the options fitted to the unit. Check sensor calibration, location and wiring.
UNIT FAULT: LOW LIQUID TEMP displayed	Improperly adjusted leaving chilled liquid temperature cut-out (glycol only). Control panel setpoint/range values improperly programmed. Chilled liquid flow too low. Defective -BLCT or -BECT sensor. (Check the sensor is properly installed in the bottom of the well with a generous amount of heat conductive compound).	Re-program the leaving chilled liquid temperature cut-out. Re-adjust setpoint/range. Increase chilled liquid flow. Compare sensor against a known good temperature sensing device. Refer to sensor calibration tables.
UNIT FAULT: 115 VAC UNDERVOLTAGE displayed	Poor mains supply voltage.	Check mains supply is stable and within allowable limits. Check for voltage dip on compressor

PROBLEM	POSSIBLE CAUSE	ACTION
SYS X HIGH DSCH PRES displayed	<p>Discharge pressure cut-out incorrectly set.</p> <p>Poor Airflow through the condenser coils</p> <p>Condenser fans not operating or operating backwards</p> <p>Air in refrigerant system.</p> <p>Excessive refrigerant charge.</p> <p>Measured pressure is incorrect.</p>	<p>Adjust in accordance with recommended setting.</p> <p>Check for airflow restrictions caused by blockages on intake faces of air coils.</p> <p>Check fir damaged fins.</p> <p>Check fan motor, fuses and contactors.</p> <p>Check fan airflow is upward.</p> <p>Check for non-condensables (air) in system. Evacuate and recharge system.</p> <p>Remove refrigerant.</p> <p>Check discharge transducer calibration and wiring.</p>
SYS X LOW SUCT PRESS displayed	<p>Suction pressure cut-out incorrectly set.</p> <p>Faulty expansion valve.</p> <p>Reduced cooler performance.</p> <p>Low refrigerant charge.</p> <p>Restricted refrigerant flow.</p> <p>Measured pressure incorrect.</p>	<p>Adjust in accordance with recommended setting.</p> <p>Replace valve</p> <p>Check for restricted chilled liquid flow.</p> <p>Check for fouled tube surfaces.</p> <p>Check for leaks.</p> <p>Check for blocked filter/drier.</p> <p>Check -YLLSV is operating correctly</p> <p>Check for moisture in the system.</p> <p>Check suction pressure transducer calibration/pressure switch and wiring.</p>
SYS X MP/HPCO FAULT displayed	<p>Compressor internal motor protector (MP) open.</p> <p>External overload tripped.</p> <p>-FHP switch open.</p> <p>Defective -FHP switch.</p>	<p>Verify refrigerant charge is not low. Verify superheat setting of 5.6° - 8.3°C. Verify correct compressor rotation. Verify compressor is not over loaded.</p> <p>Determine cause and reset.</p> <p>See 'High Discharge Pressure Fault'.</p> <p>Replace -FHP switch.</p>
Compressor(s) do not start	<p>Demand not sufficient.</p> <p>Defective water temperature sensor.</p> <p>Contactors/Overload failure.</p> <p>Compressor failure.</p>	<p>No problem.</p> <p>Compare the display with a thermometer. Should be within +/- 2 degrees. Refer to BECT/ BLCT calibration charts.</p> <p>Replace defective part.</p> <p>Diagnose cause of failure and replace.</p>
Lack of cooling effect	<p>Fouled cooler surface. (Low suction pressure will be observed).</p> <p>Improper flow through the cooler</p> <p>Low refrigerant charge. (Low suction pressure will be observed).</p>	<p>Contact the local Johnson Controls service representative.</p> <p>Reduce flow to within unit design specification.</p> <p>Check subcooling and add charge as needed. Check for leaks.</p>
!! LOW BATTERY !! CHECK PROG / SETP / OPTN displayed	<p>RTC battery (U5) flat.</p>	<p>Replace U5 and reprogram setpoints, values, options, time and schedule.</p>

8.2 Sensor Calibration Charts

Chilled Liquid Temperature Sensors (-BLCT & -BECT)

Temperature °C	Resistance ohms	Microboard Voltage Vdc	Sensor Voltage Vdc
-8	14896	1.57	3.43
-6	13388	1.69	3.31
-4	12047	1.81	3.19
-2	10856	1.93	3.07
0	9795	2.05	2.95
2	8849	2.17	2.83
4	8005	2.30	2.70
6	7251	2.42	2.58
8	6575	2.54	2.46
10	5970	2.66	2.34
12	5427	2.78	2.22
14	4937	2.90	2.10

Red wire = 5 V, Black wire = Signal

Test points :

Leaving Liquid Temperature (-BLCT)

Sensor Voltage Input 5V -AMB J6-4/1
Microboard Voltage Input 0V -AMB J6-7/1

Entering Liquid Temperature (-BECT)

Sensor Voltage Input 5V -AMB J6-5/2
Microboard Voltage Input 0V -AMB J6-8/2

Ambient Air Temperature Sensor (-BAMB)

Temperature °C	Resistance ohms	Microboard Voltage Vdc	Sensor Voltage Vdc
-18	85398	0.67	4.33
-15	72950	0.77	4.23
-10	55330	0.97	4.03
-5	42227	1.20	3.80
0	32650	1.45	3.55
5	25390	1.72	3.28
10	19900	2.00	3.00
15	15710	2.29	2.71
20	12490	2.58	2.42
25	10000	2.85	2.15
30	8057	3.11	1.89
35	6530	3.35	1.65
40	5327	3.57	1.43

Red wire = Signal, Black wire = 5 V

Test points :

Ambient Air (-BAMB)

Sensor Voltage Input 5V -AMB J6-6/3
Microboard Voltage Input 0V -AMB J6-9/3

Discharge and Suction Pressure Transducers (-BDP & -BSP)

-BSP 0 - 27.58 Barg		-BDP 0 - 44.83Barg	
Pressure Barg	Volts Vdc	Pressure Barg	Volts Vdc
0.00	0.50	0.00	0.50
3.00	0.94	4.00	0.86
6.00	1.37	8.00	1.21
9.00	1.81	12.00	1.57
12.00	2.24	16.00	1.93
15.00	2.68	20.00	2.28
18.00	3.11	28.00	3.00
21.00	3.55	32.00	3.36
24.00	3.98	36.00	3.71
27.58	4.50	42.00	4.25
		44.83	4.50
		3.35	1.65
		3.57	1.43

Red wire = Signal, Black wire = 5 V

Test points :

Discharge Pressure (-BDP) 44.83 barg Transducer:

Refrigerant Circuit 1 -AMB J7-11/7
Refrigerant Circuit 2 -AMB J9-11/7
Voltage = (Pressure (barg) X 0.0892) + 0.5

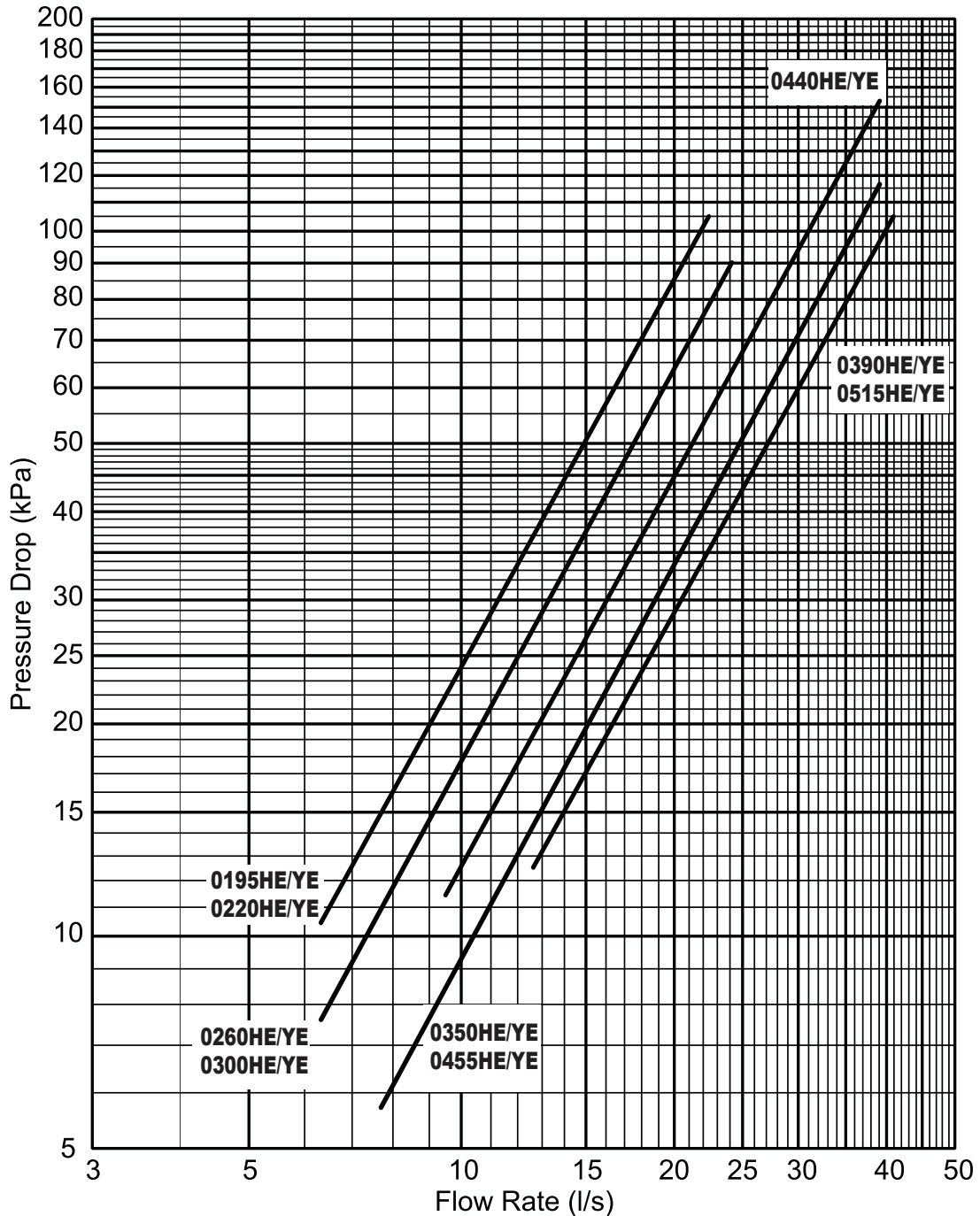
Suction Pressure (-BSP) 27.58 barg Transducer:

Refrigerant Circuit 1 -AMB J7-10/9
Refrigerant Circuit 2 -AMB J9-10/9
Voltage = (Pressure (barg) X 0.145) + 0.5

Page Left Intentionally Blank

9. Technical Data

9.1 Evaporator pressure drop graph

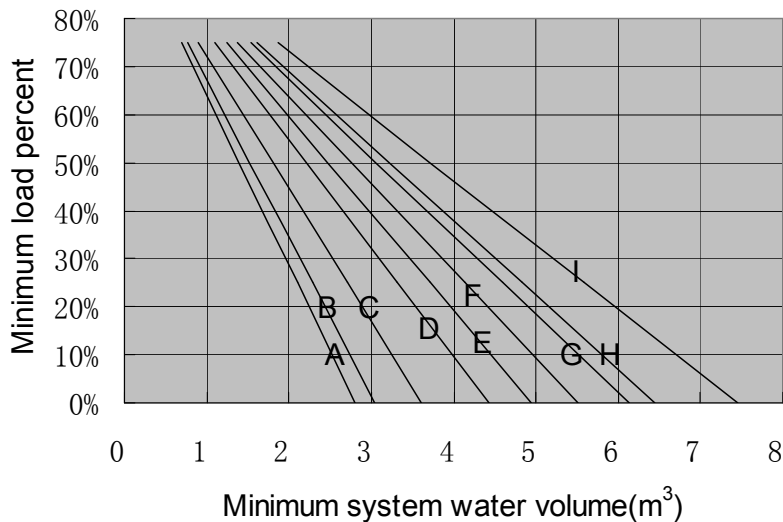


9.2 Operating Limitations-HE/YE Models

YLAA HE/YE			0195/0220		0260		0300		0350	
			Min.	Max.	Min.	Max.	Min.	Max.	Min.	Max.
Chilled Liquid	Liquid Outlet Temperature (Water)	°C	5 to 15							
	Liquid Outlet Temperature (Glycol)	°C	-13 to 15							
	Liquid Outlet Temperature Range	°C	3 to 8							
	Evaporator Flow Rate	L/s	6.3	22.4	6.3	24.3	6.3	24.3	7.6	39.4
	Evaporator Pressure Drop	kPa	10	105	8	91	8	91	6	118
	Maximum Water Side Pressure	bar	10							
Ambient Air	Air Temperature - Standard Unit	°C	-4 to 46 *							
	Air Temperature - Unit with Low Ambient Kit	°C	-18 to 46 *							
Maximum Refrigerant Side Pressure		bar	38.6							
Power Supply Voltage 380/400/415V, 3~, 50Hz (nominal)		V	342 to 456							

YLAA HE#B			0390		0440		0455		0515	
			Min.	Max.	Min.	Max.	Min.	Max.	Min.	Max.
Chilled Liquid	Liquid Outlet Temperature (Water)	°C	5 to 15							
	Liquid Outlet Temperature (Glycol)	°C	-13 to 15							
	Liquid Outlet Temperature Rang	C	3 to 8							
	Evaporator Flow Rate	L/s	12.6	41.0	9.5	39.4	7.6	39.4	12.6	41.0
	Evaporator Pressure Drop	kPa	13	105	11	154	6	118	13	105
	Maximum Water Side Pressure	bar	10							
Ambient Air	Air Temperature - Standard Unit	°C	-4 to 46 *							
	Air Temperature - Unit with Low Ambient Kit	°C	-18 to 46 *							
Maximum Refrigerant Side Pressure		bar	38.6							
Power Supply Voltage 380/400/415V, 3~, 50Hz (nominal)		V	342 to 456							

Minimum load percent-Minimum system water volume



- A:YLAA0195HE/YE
- B:YLAA0220HE/YE
- C:YLAA0260HE/YE
- D:YLAA0300HE/YE
- E:YLAA0350HE/YE
- F:YLAA0390HE/YE
- G:YLAA0440HE/YE
- H:YLAA0455HE/YE
- I:YLAA0515HE/YE

9.3 Fan power Data

Values for fans used on system 2 on YLAA0195HE/YE

Standard		
W	FLA @380V	LRA @380V
375	1.35	3.4

Values are for each fan. (FLA: Full Load Amps; LRA: Lock Rotor Amps)

Values for fans used on all other models and on system 1 on YLAA0195HE/YE

Standard		
kW	FLA @380V	LRA @380V
1.5	3.0	20

Values are for each fan. (FLA: Full Load Amps; LRA: Lock Rotor Amps)

9.4 Physical Data-HE/YE Models

YLAA-HE YLAA-YE		0195HE 0195YE	0220HE 0220YE	0260HE 0260YE	0300HE 0300YE	0350HE 0350YE	0390HE 0390YE	0440HE 0440YE	0455HE 0455YE	0515HE 0515YE	
Number of refrigerant circuits		2									
Refrigerant Charge(Circuit 1/Circuit2)	YLAA-HE (kg)	20+12	20+19.7	20+20	28.1+24.5	28.6+26.8	32.7+27.7	37.6+28.1	36.7+35.4	39.5+39	
	YLAA-YE (kg)	28.1+18.1	28.1+25.4	28.1+26.8	39.5+26.8	40.4+39	54.4+29.9	53.5+39.9	52.6+51.3	54.4+53.5	
Oil Charge	Circuit1/Circuit2(L)	12/6	10.4/8.3	10/10	11/10	11/11	17/10	17/11	17/20	17/17	
Compressor	Number of Comp	3/2	2/2	2/2	2/2	2/2	3/2	3/2	3/3	3/3	
	Type	Scroll									
Evaporator	Number	1									
	Type	Shell and Tubes									
	Water Volume(L)	185	185	193	193	208	293	250	208	293	
	Water Connection (Inch)	6	6	6	6	8	8	8	8	8	
Total Coil Face Area	YLAA-HE Coil(m ²)	7.5	10	10	12.6	15.1	15.1	17.6	20.1	20.1	
	YLAA-YE Coil(m ²)	204.7*3	204.7*4	204.7*4	204.7*5	204.7*6	204.7*6	204.7*7	204.7*8	204.7*8	
Condenser Fans	Number of Fans (Circuit1/Circuit2)	2/2	2/2	2/2	3/2	3/3	4/2	4/3	4/4	4/4	
	Total Air Flow-Standard Models (m ³ /s)	26	26	26	32.5	39	39	45.5	52	52	
The Unit Dimensions	YLAA-HE	Length(mm)	3024	3024	3024	3727	3727	3727	4844	4844	4844
		Width(mm)	2242	2242	2242	2242	2242	2242	2242	2242	2242
		Height(mm)	2398	2398	2398	2398	2398	2398	2398	2398	2398
	YLAA-YE	Length(mm)	3024	3024	3024	3727	3727	3727	4844	4844	4844
		Width(mm)	2242	2242	2242	2242	2242	2242	2242	2242	2242
		Height(mm)	2426	2426	2426	2426	2426	2426	2426	2426	2426
Shipping Weight	YLAA-HE	1980	2042	2134	2416	2673	2995	3706	3770	4036	
	YLAA-YE	2100	2082	2174	3046	3268	3529	3862	4014	4219	
Operating Weight	YLAA-HE	2165	2227	2328	2611	2880	3287	3957	3978	4328	
	YLAA-YE	2284	2267	2368	3240	3475	3821	4113	4222	4511	

- (1) Liquid-cooling measured at the liquid line should be between 8.5 and 11.0°C at circuit full load. Sub-cooling is determined by the level of refrigerant charge in each system.

9.5 Electrical Data Models

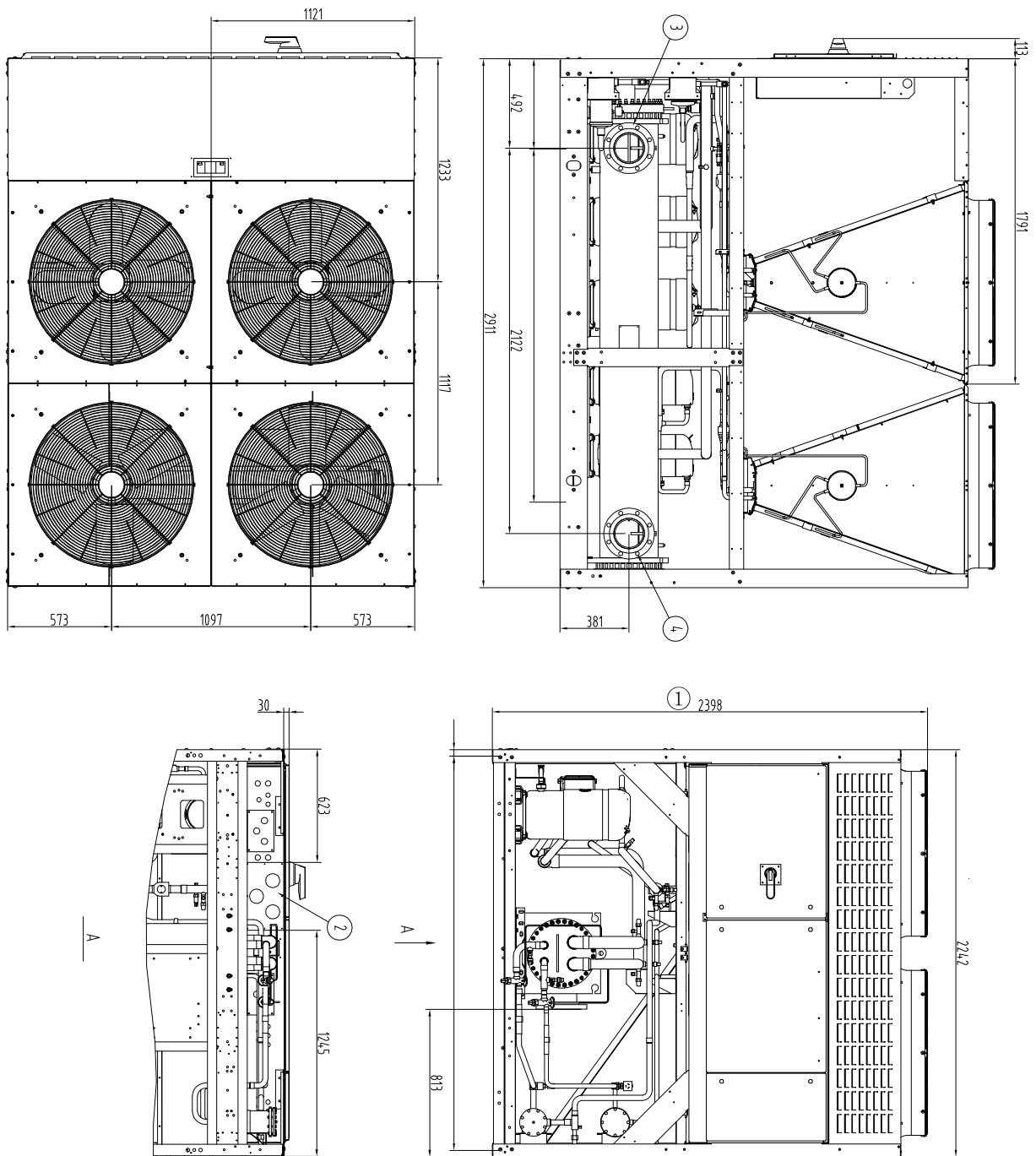
YLAA	Nominal Running Conditions		Maximum Running Conditions			Start up Amps
	KW	Amps ⁽¹⁾ @380V	KW	Amps ⁽²⁾ @342V	Amps ⁽²⁾ @418V	Direct on Line ⁽³⁾
	without Power Factor Correction					
0195HE/YE	66	125	78	150	142	309
0220HE/YE	76.7	138	90.57	190	171	390
0260HE/YE	86	157	104	195	184	446
0300HE/YE	98	182	124	231	206	466
0350HE/YE	115	207	143	268	237	492
0390HE/YE	133	239	159	297	264	522
0440HE/YE	145	259	178	333	294	543
0455HE/YE	169	304	189	355	318	588
0515HE/YE	175	311	213	398	352	596

(1) Nominal running amps at 35°C ambient air temperature and 7°C leaving chilled liquid temperature

(2) Maximum running amps at maximum operating conditions before compressor unloading

(3) Start up amps is the largest compressor starting with all other compressors/fans operating at nominal conditions at 380V

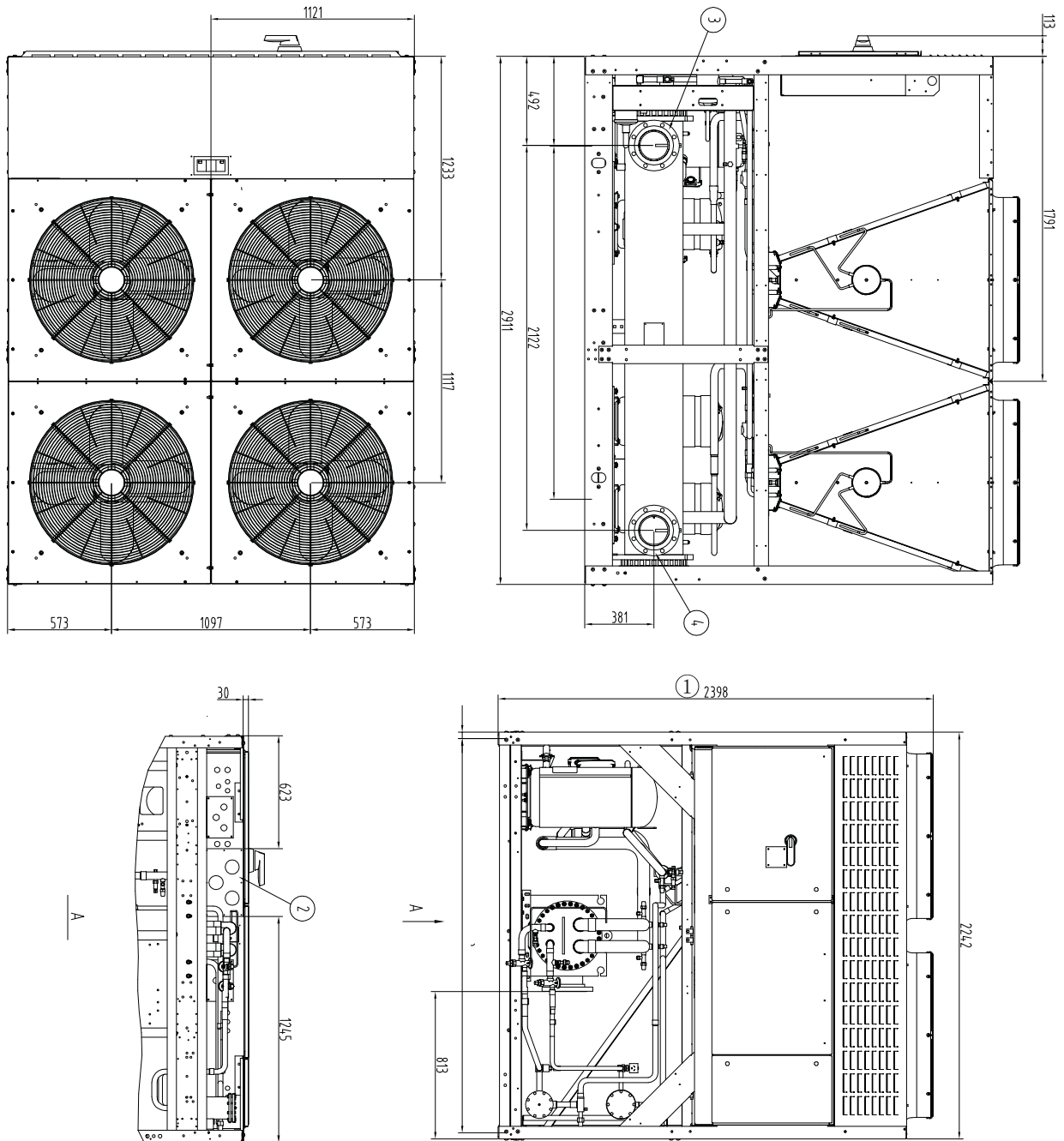
YLAA0195HE/YE



Remarks:

- ① Compared with High Efficiency Unit, the height added 28mm, further, there is not receiver on High Efficiency(Round Tube) Unit.
- ② Power cable entry
- ③ Chilled water inlet connection to evaporator with DN150 welded flange
- ④ Chilled water outlet connection to evaporator with DN150 welded flange

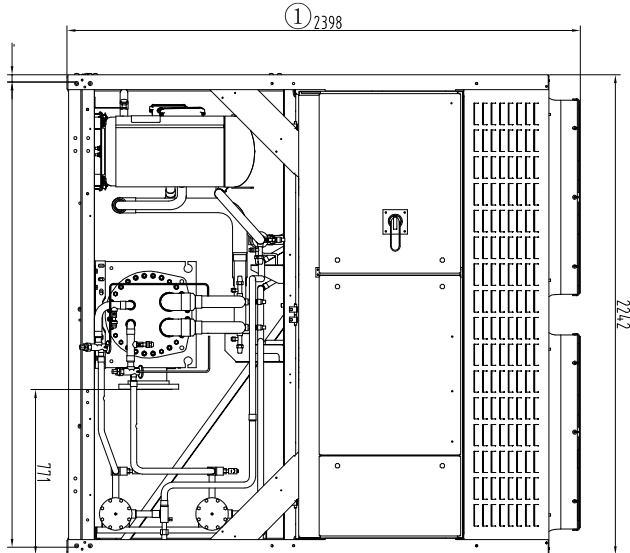
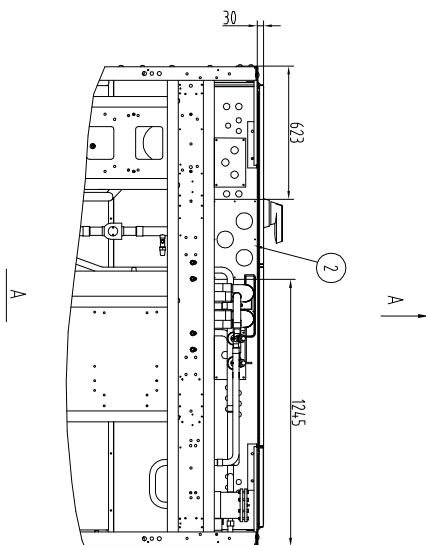
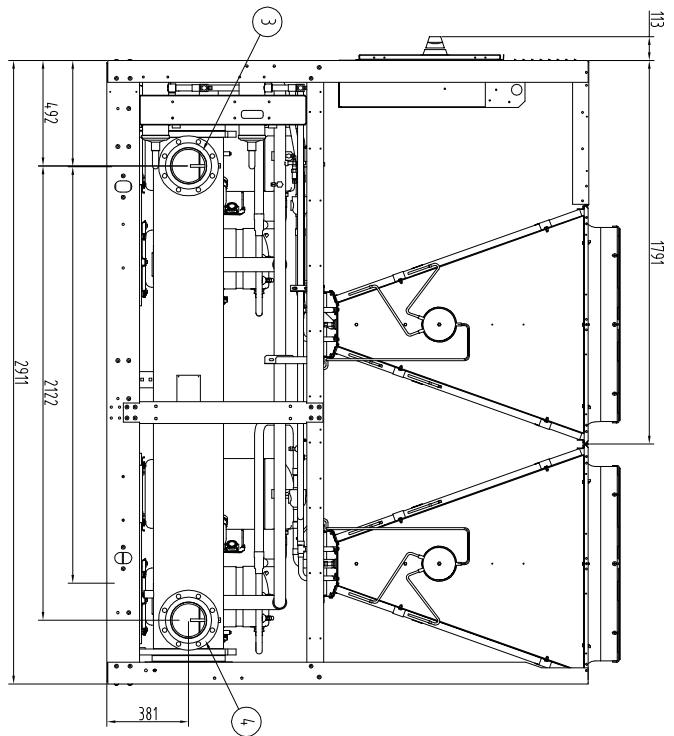
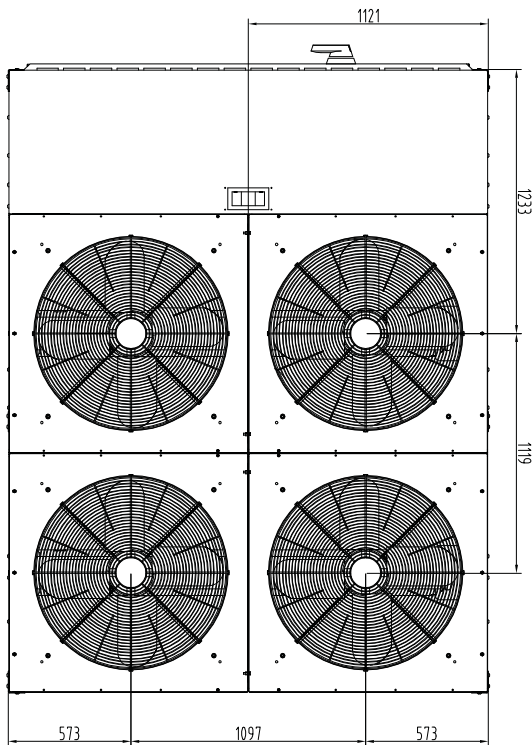
YLAA0220HE/YE



Remarks:

- ① Compared with High Efficiency Unit, the height added 28mm, further, there is not receiver on High Efficiency(Round Tube) Unit.
- ② Power cable entry
- ③ Chilled water inlet connection to evaporator with DN150 welded flange
- ④ Chilled water outlet connection to evaporator with DN150 welded flange

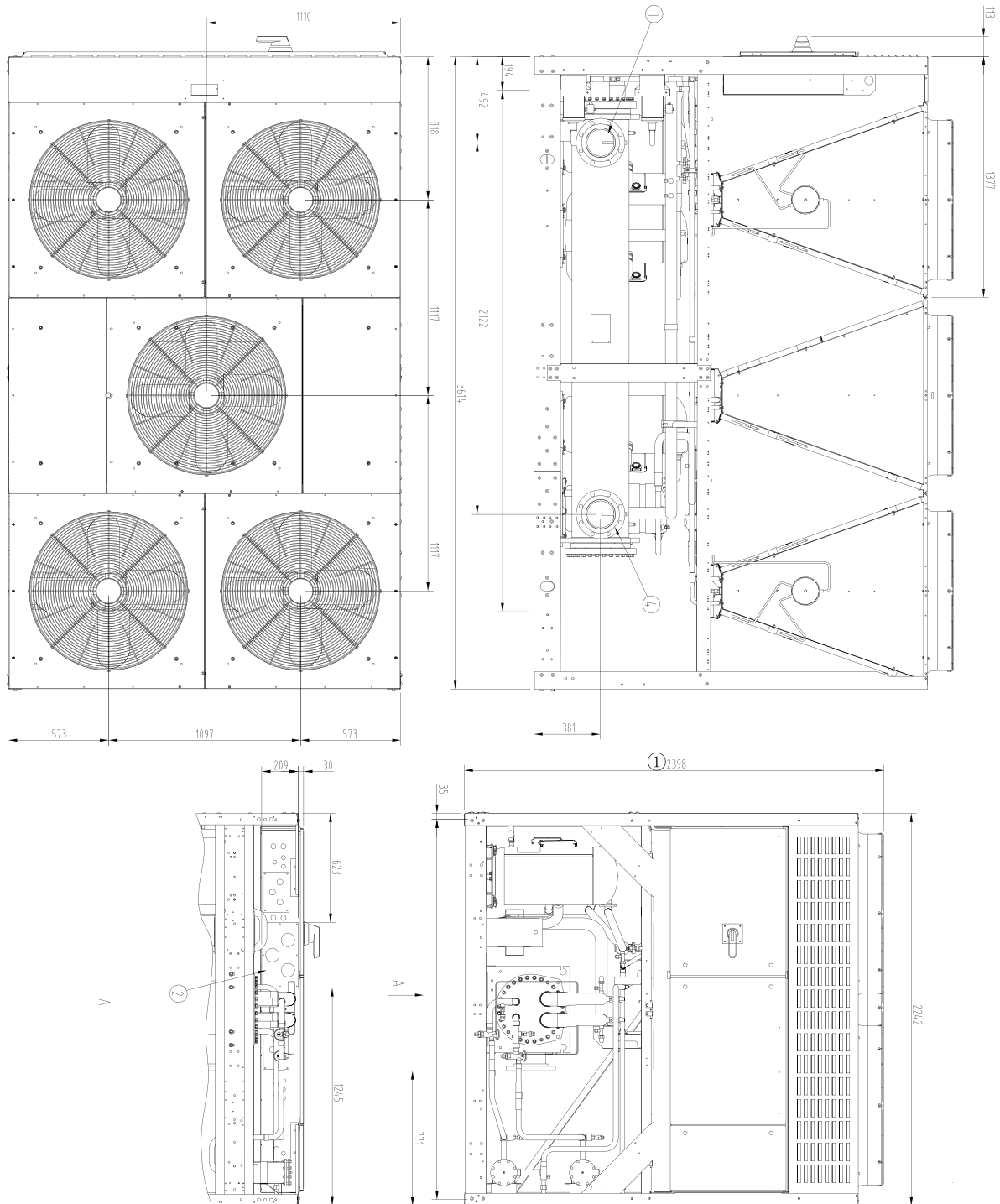
YLAA0260HE/YE



Remarks:

- ① Compared with High Efficiency Unit, the height added 28mm, further, there is not receiver on High Efficiency(Round Tube) Unit.
- ② Power cable entry
- ③ Chilled water inlet connection to evaporator with DN150 welded flange
- ④ Chilled water outlet connection to evaporator with DN150 welded flange

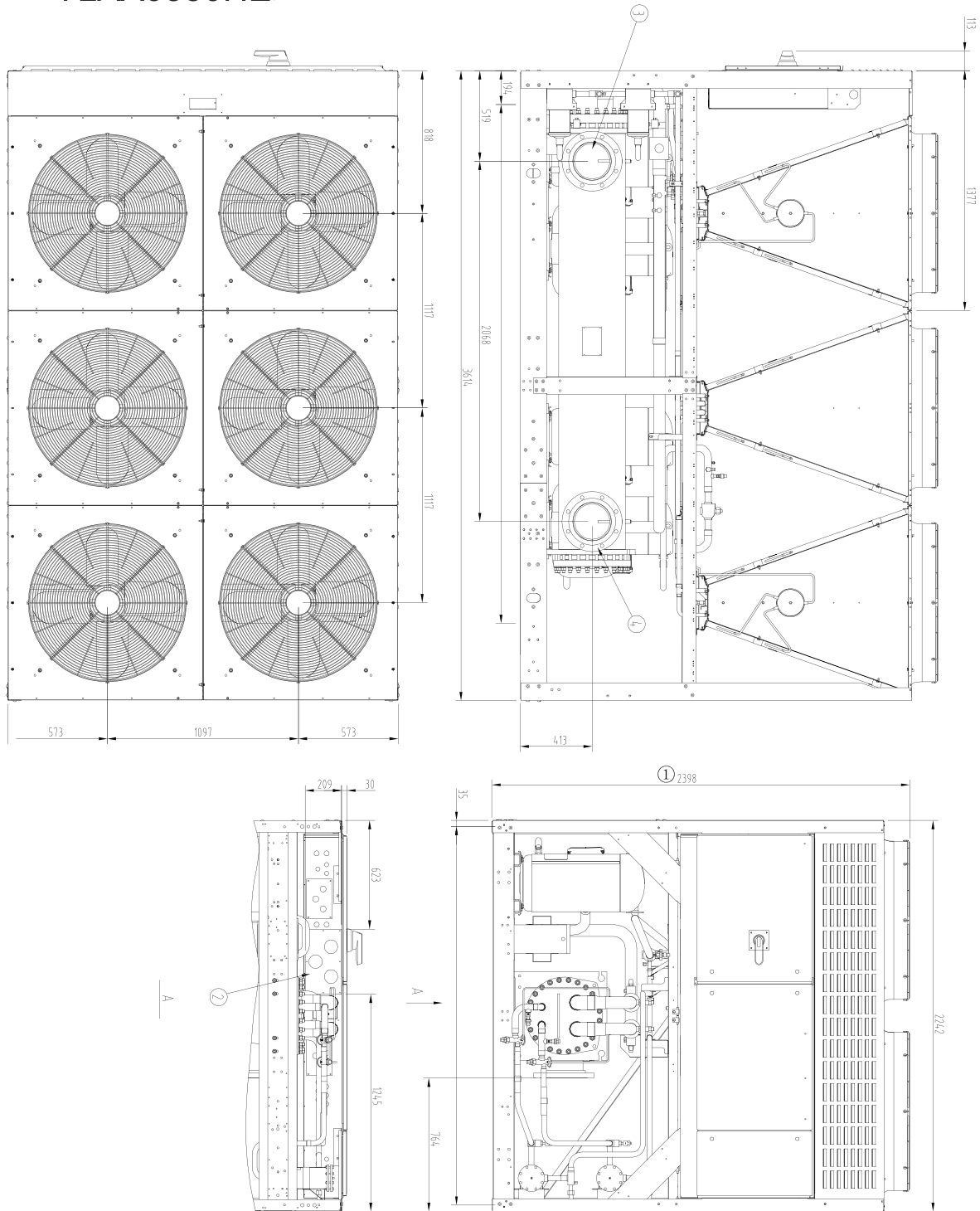
YLAA0300HE/YE



Remarks:

- ① Compared with High Efficiency Unit, the height added 28mm, further, there is not receiver on High Efficiency(Round Tube) Unit.
- ② Power cable entry
- ③ Chilled water inlet connection to evaporator with DN150 welded flange
- ④ Chilled water outlet connection to evaporator with DN150 welded flange

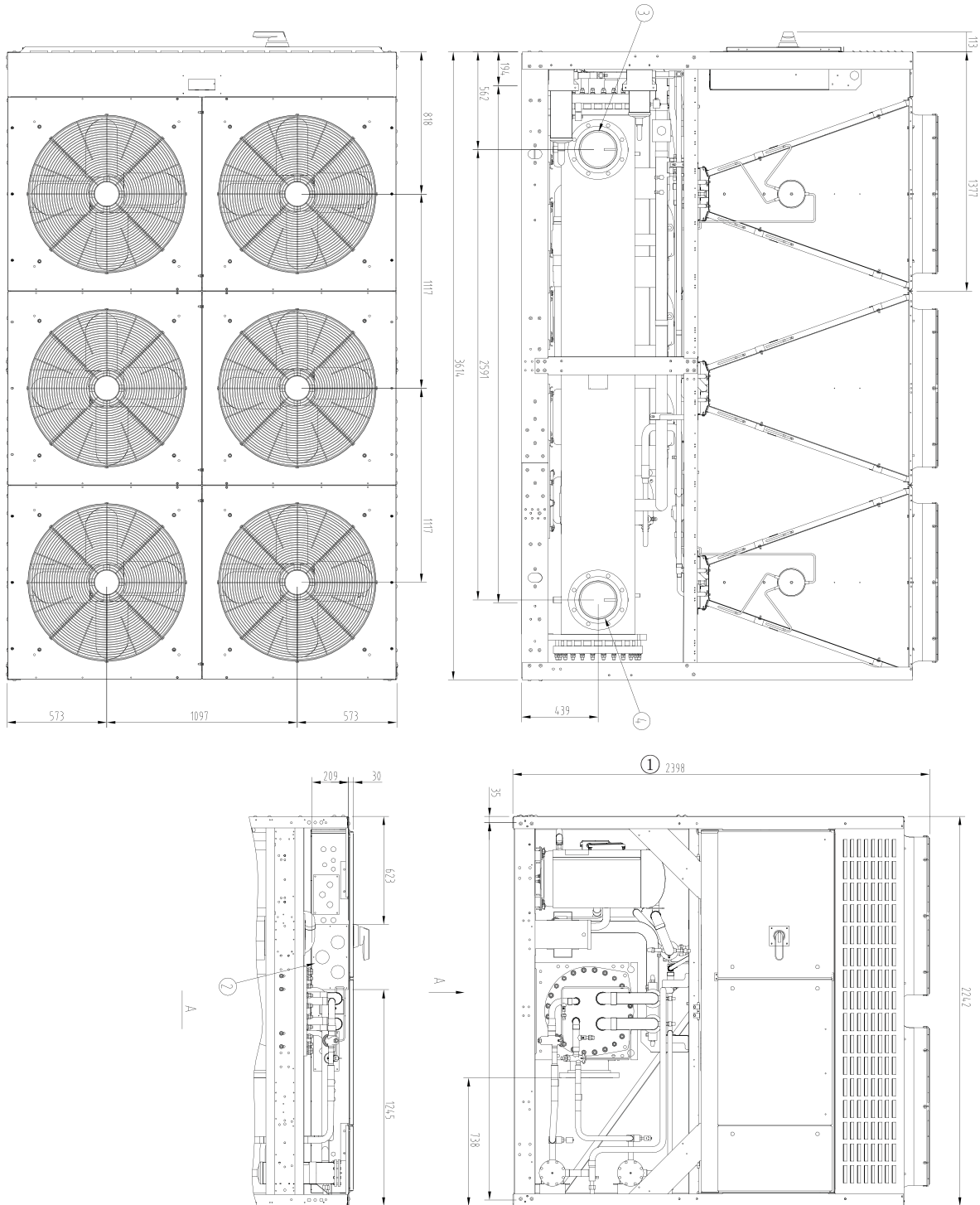
YLAA0350HE/YE



Remarks:

- ① Compared with High Efficiency Unit, the height added 28mm, further, there is not receiver on High Efficiency(Round Tube) Unit.
- ② Power cable entry
- ③ Chilled water inlet connection to evaporator with DN200 welded flange
- ④ Chilled water outlet connection to evaporator with DN200 welded flange

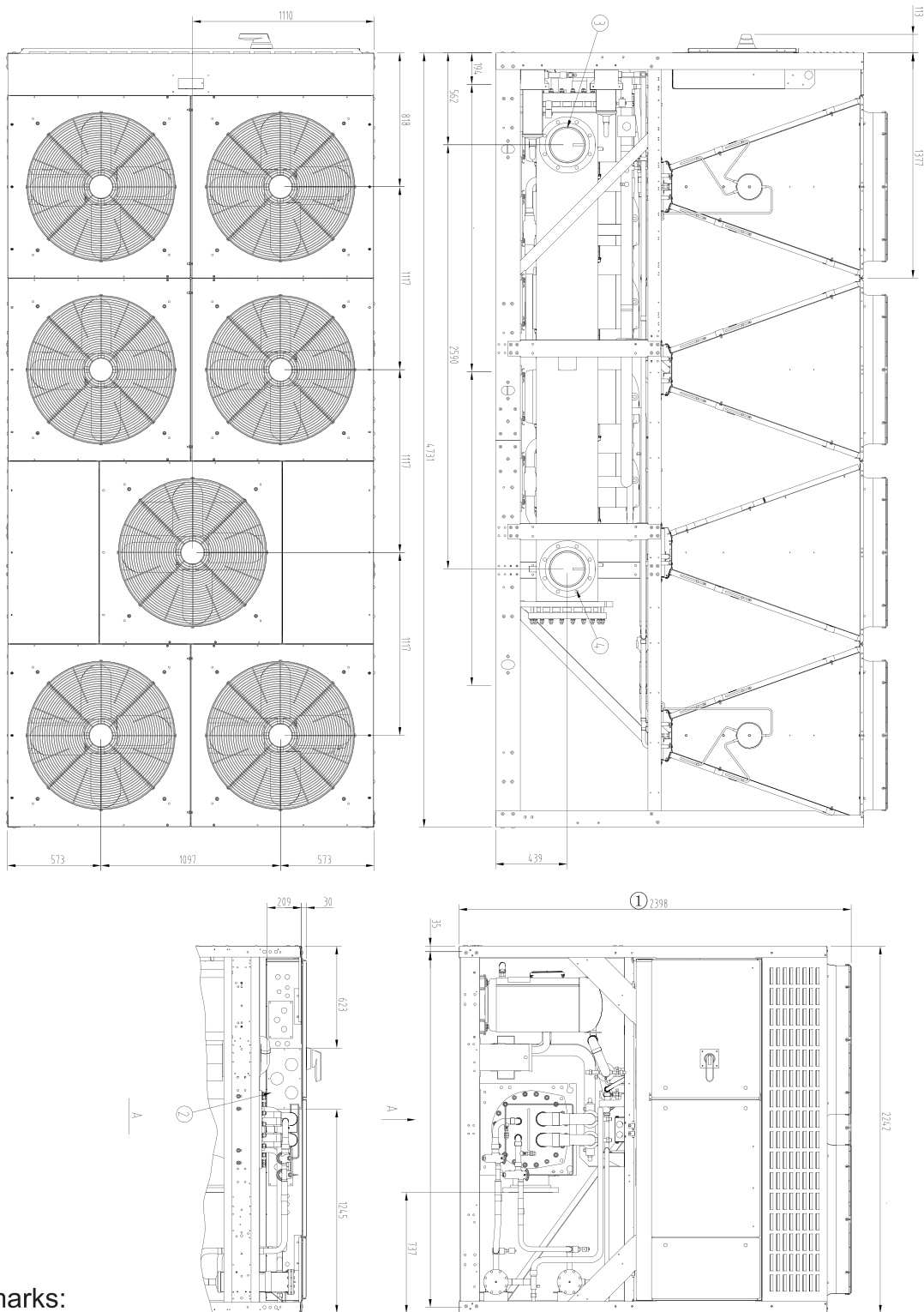
YLAA0390HE/YE



Remarks:

- ① Compared with High Efficiency Unit, the height added 28mm, further, there is not receiver on High Efficiency(Round Tube) Unit.
- ② Power cable entry
- ③ Chilled water inlet connection to evaporator with DN200 welded flange
- ④ Chilled water outlet connection to evaporator with DN200 welded flange

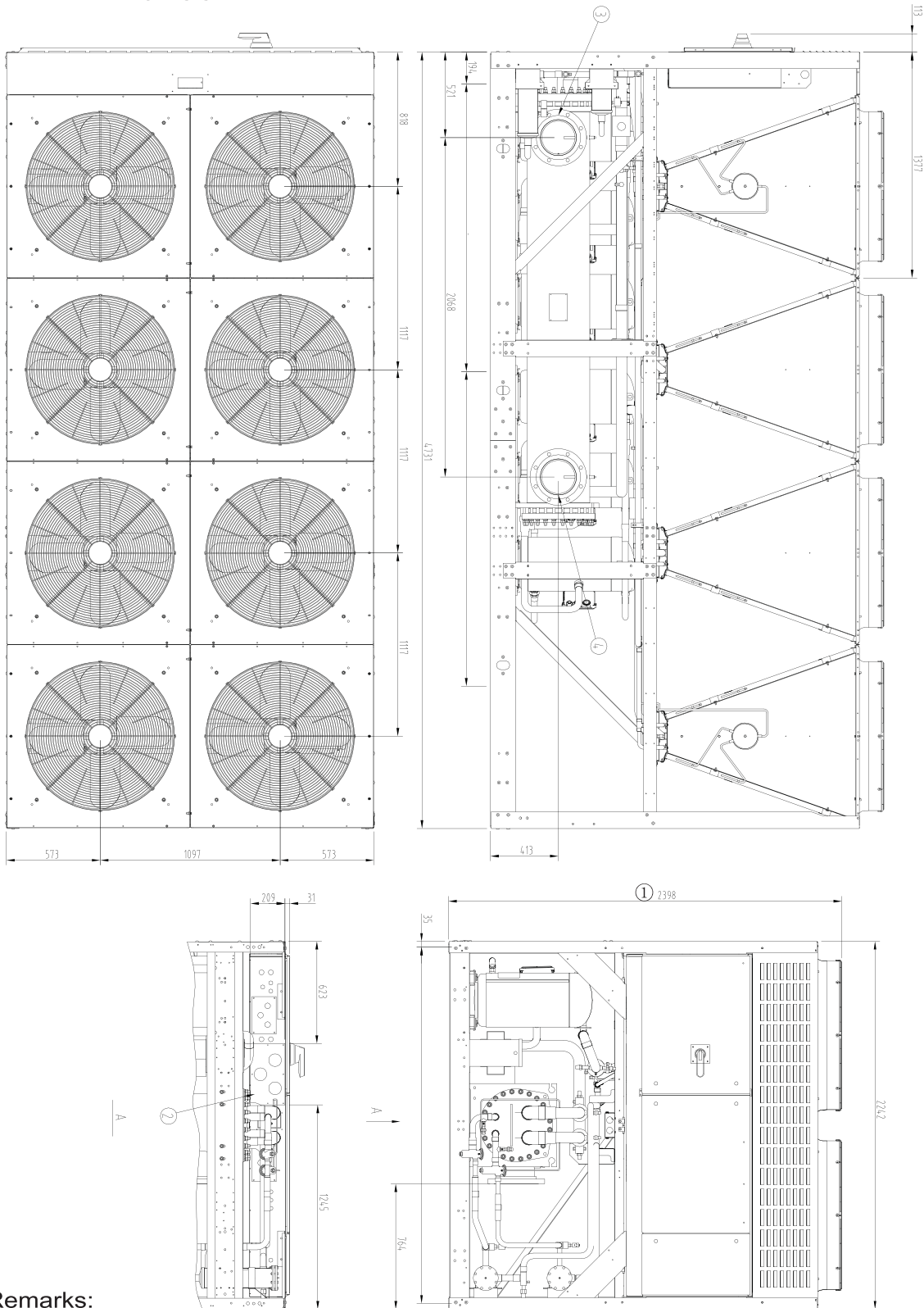
YLAA0440HE/YE



Remarks:

- ① Compared with High Efficiency Unit, the height added 28mm, further, there is not receiver on High Efficiency(Round Tube) Unit.
- ② Power cable entry
- ③ Chilled water inlet connection to evaporator with DN200 welded flange
- ④ Chilled water outlet connection to evaporator with DN200 welded flange

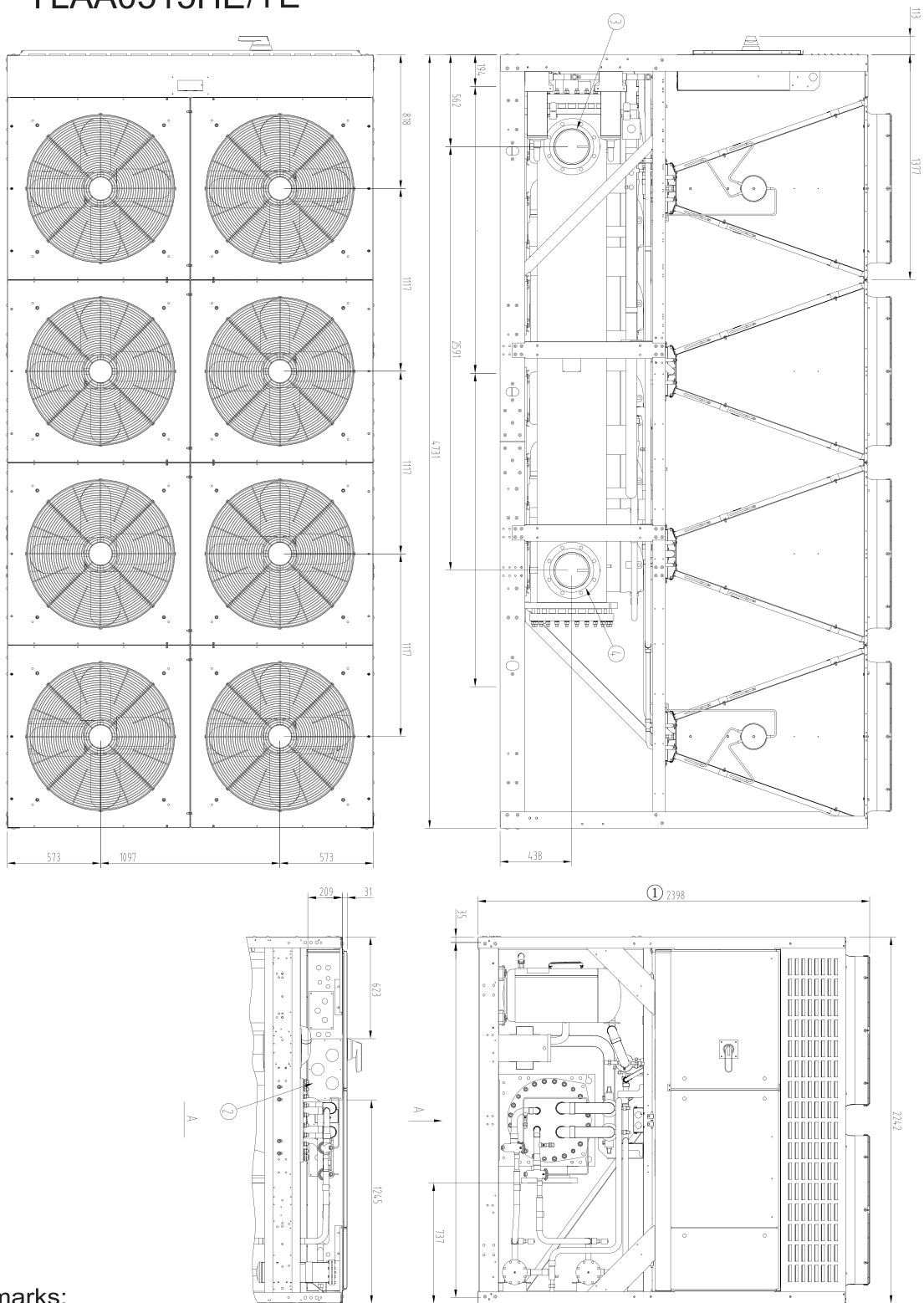
YLAA0455HE/YE



Remarks:

- ① Compared with High Efficiency Unit, the height added 28mm, further, there is not receiver on High Efficiency(Round Tube) Unit.
- ② Power cable entry
- ③ Chilled water inlet connection to evaporator with DN200 welded flange
- ④ Chilled water outlet connection to evaporator with DN200 welded flange

YLAA0515HE/YE



Remarks:

- ① Compared with High Efficiency Unit, the height added 28mm, further, there is not receiver on High Efficiency(Round Tube) Unit.
- ② Power cable entry
- ③ Chilled water inlet connection to evaporator with DN200 welded flange
- ④ Chilled water outlet connection to evaporator with DN200 welded flange

10. Spare Parts

10.1 Recommended Spares

Contact your local YORK Sales and Service Centre for information and please quote the unit model number and serial number.

10.2 Recommended Compressor Oil

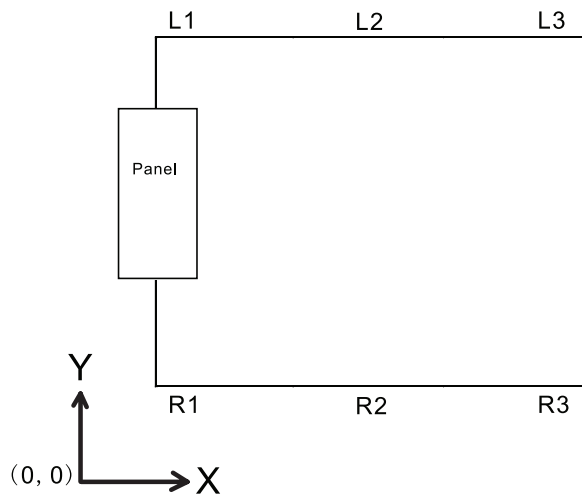
The correct type of oil must be used in the unit as shown on the unit data plate and labels. Standard units use the following oil:

Refrigerant	Compressor Oil
R410A	POE oil

10.3 Associated Drawings

Wiring Diagrams	
Models	All
Schematic	035-21583-301 to -306
Connection	035-21583-301 to -306
Legend/Notes	035-21966-301

Spring Isolator installation detail of basic unit



Spring Isolator Installation Site (mm)

UNIT \ SITE	R1	R2	R3	L1	L2	L3
YLAA195HE/YE	(495,35)	(2441,35)	-	(495,2207)	(2441,2207)	-
YLAA220HE/YE	(495,35)	(2441,35)	-	(495,2207)	(2441,2207)	-
YLAA260HE/YE	(495,35)	(2441,35)	-	(495,2207)	(2441,2207)	-
YLAA300HE/YE	(193,35)	(1946,35)	(3169,35)	(193,2207)	(1946,2207)	(3169,2207)
YLAA350HE/YE	(193,35)	(1946,35)	(3169,35)	(193,2207)	(1946,2207)	(3169,2207)
YLAA390HE/YE	(193,35)	(1946,35)	(3169,35)	(193,2207)	(1946,2207)	(3169,2207)
YLAA440HE/YE	(193,35)	(1946,35)	(3863,35)	(193,2207)	(1946,2207)	(3863,2207)
YLAA455HE/YE	(193,35)	(1946,35)	(3863,35)	(193,2207)	(1946,2207)	(3863,2207)
YLAA515HE/YE	(193,35)	(1946,35)	(3863,35)	(193,2207)	(1946,2207)	(3863,2207)

Isolator Model on High Efficiency(Round Tube) Unit

UNIT \ SITE	R1	R2	R3	L1	L2	L3
YLAA195YE	MHD-550	MHD-450	-	MHD-730	MHD-550	-
YLAA220YE	MHD-550	MHD-450	-	MHD-730	MHD-550	-
YLAA260YE	MHD-550	MHD-450	-	MHD-730	MHD-650	-
YLAA300YE	MHD-450	MHD-550	MHD-320	MHD-650	MHD-850	MHD-450
YLAA350YE	MHD-550	MHD-650	MHD-320	MHD-730	MHD-920	MHD-450
YLAA390YE	MHD-650	MHD-320	MHD-650	MHD-920	MHD-650	MHD-730
YLAA440YE	MHD-550	MHD-650	MHD-550	MHD-730	MHD-1050	MHD-650
YLAA455YE	MHD-550	MHD-650	MHD-550	MHD-650	MHD-1200	MHD-650
YLAA515YE	MHD-550	MHD-730	MHD-650	MHD-730	MHD-1200	MHD-730

Isolator Model on High Efficiency Unit

UNIT \ SITE	R1	R2	R3	L1	L2	L3
YLAA195HE	MHD-550	MHD-450	-	MHD-730	MHD-550	-
YLAA220HE	MHD-550	MHD-450	-	MHD-730	MHD-550	-
YLAA260HE	MHD-550	MHD-450	-	MHD-730	MHD-650	-
YLAA300HE	MHD-450	MHD-450	MHD-320	MHD-550	MHD-650	MHD-320
YLAA350HE	MHD-450	MHD-550	MHD-320	MHD-550	MHD-730	MHD-320
YLAA390HE	MHD-550	MHD-320	MHD-550	MHD-730	MHD-550	MHD-650
YLAA440HE	MHD-550	MHD-650	MHD-550	MHD-730	MHD-1050	MHD-650
YLAA455HE	MHD-450	MHD-650	MHD-550	MHD-650	MHD-1050	MHD-650
YLAA515HE	MHD-550	MHD-650	MHD-650	MHD-730	MHD-1200	MHD-650

11. Decommissioning, Dismantling and Disposal



Never release refrigerant to the atmosphere when emptying the refrigerating circuits. Suitable retrieval equipment must be used. If reclaimed refrigerant cannot be reused, it must be returned to the manufacturer.



Never discard used compressor oil, as it contains refrigerant in solution. Return used oil to the oil manufacturer. Unless otherwise indicated, the operations described below can be performed by any properly trained maintenance technician.

11.1 General

Isolate all sources of electrical supply to the unit including any control system supplies switched by the unit. Ensure that all points of isolation are secured in the 'OFF' position. The supply cables may then be disconnected and removed. For connection points refer to Installation Section.

Remove all refrigerant from each system of the unit into a suitable container using a refrigerant reclaim or recovery unit. This refrigerant may then be re-used, if appropriate, or returned to the manufacturer for disposal. Under NO circumstances should refrigerant be vented to atmosphere. Drain the refrigerant oil from each system into a suitable container and dispose of according to local laws and regulations governing the disposal of oily wastes. Any spilt oil should be mopped up and similarly disposed of.

Isolate the unit heat exchanger from the external water systems and drain the heat exchanger section of the system. If no isolation valves are installed it may be necessary to drain the complete system.



If glycol or similar solutions have been used in the water system, or chemical additives are contained, the solution **MUST** be disposed of in a suitable and safe manner. Under **NO** circumstances should any system containing glycol or similar solutions be drained directly into domestic waste or natural water systems.

After draining, the water pipework may be disconnected and removed.

Packaged units can generally be removed in one piece after disconnection as above. Any fixing down bolts should be removed and then the unit should be lifted from position using the points provided and equipment of adequate lifting capacity.

Units which cannot be removed in one piece after disconnection as above must be dismantled in position. Special care should be taken regarding the weight and handling of each component. Where possible units should be dismantled in the reverse order of installation.



Residual refrigerant oil and glycol or similar solutions may remain in some parts of the system. These should be mopped up and disposed of as described above.

It is important to ensure that whilst components are being removed the remaining parts are supported in a safe manner.



Only use lifting equipment of adequate capacity

After removal from position the unit parts may be disposed of according to local laws and regulations.



YORK Guangzhou Air Conditioning & Refrigeration Co., Ltd.

Phone: +86 763 4681111

Fax: +86 763 4681114



© 2012 Johnson Controls, Inc.

www.johnsoncontrols.com

FORM NO.: 150.72-NOM1.EN(0612)
SUPERSEDES: 150.72-NOM1.EN(1111)



Printed on recycled paper

* Johnson Controls reserve all rights to product design changes without notification.

** Product performance detailed is agreed in the contract, this manual is for reference only.

SAP NO.: 417998