

YLAA0195HE/YE — YLAA0515HE/YE

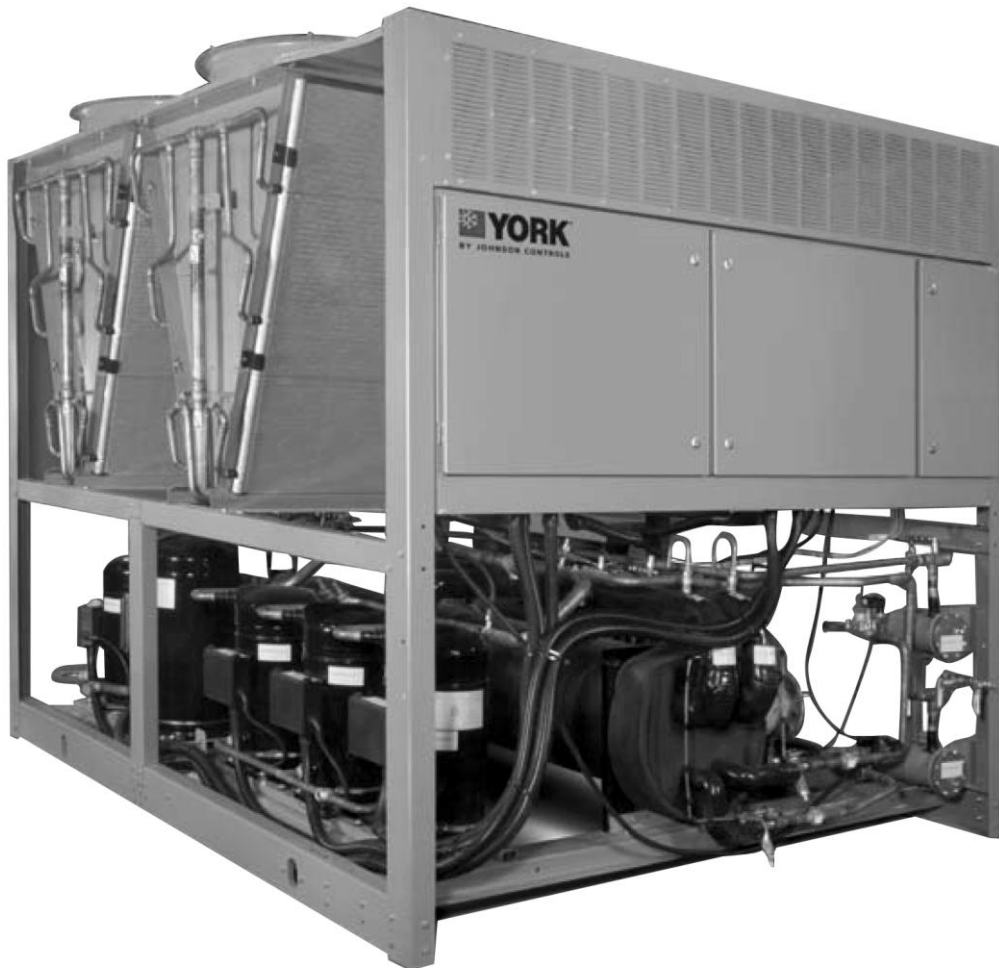
RENEWAL PARTS LIST

150.72-RP1.EN (1212)

Rev:1212

AIR COOLED LIQUID CHILLERS WITH SCROLL COMPRESSORS STYLE A

(Cooling Capacities: 196kW — 521kW)



Safety

There are a number of areas and features which may be a hazard and potentially cause injury when working with the unit unless suitable safety precautions are taken. It is important to ensure access to the unit is restricted to suitably qualified persons who are familiar with the potential hazards and precautions necessary for safe operation and maintenance of equipment containing high temperatures, pressures and voltages.

Pressure Systems

The unit contains refrigerant vapor and liquid under pressure, release of which can be a danger and cause injury. The user should ensure that care is taken during installation, operation and maintenance to avoid damage to the pressure system. No attempt should be made to gain access to the component parts of the pressure system other than by suitably trained and qualified personnel.

Electrical

The unit must be earthed. No installation or maintenance work should be attempted on electrical equipment without first switching off, isolating and locking-off the power supply. Work on live equipment must only be carried-out by suitably trained and qualified personnel. No attempt should be made to gain access to inside of the control panel, wiring or other electrical enclosures during normal operation of the unit.

Refrigerants and Oils

Refrigerants and oils used in the unit are generally non-toxic, non-flammable and non-corrosive, and pose no special safety hazards. Use of gloves and safety glasses are, however, recommended when working on the unit. Build up of refrigerant vapor, from a leak for example, does pose a risk of asphyxiation in confined or enclosed spaces and attention should be given to good ventilation.

Rotating Parts

Fan guards must be fitted at all times and not removed unless the main power supply has been isolated. If ductwork is to be fitted, requiring the wire fan guards to be removed, alternative safety measures must be taken to protect against the risk of injury from rotating fans.

Changeability of this Document

In complying with Johnson Controls' policy for continuous product improvement, the information contained in this document is subject to change without notice. While Johnson Controls makes no commitment to update or provide current information automatically to the manual owner, that information, if applicable, can be obtained by contacting the nearest Johnson Controls Service office.

It is the responsibility of operating/service personnel to verify the applicability of these documents to the equipment in question. If there is any question in the mind of operating/service personnel as to the applicability of these documents, then prior to working on the equipment, they should verify with the owner whether the equipment has been modified and if current literature is available.

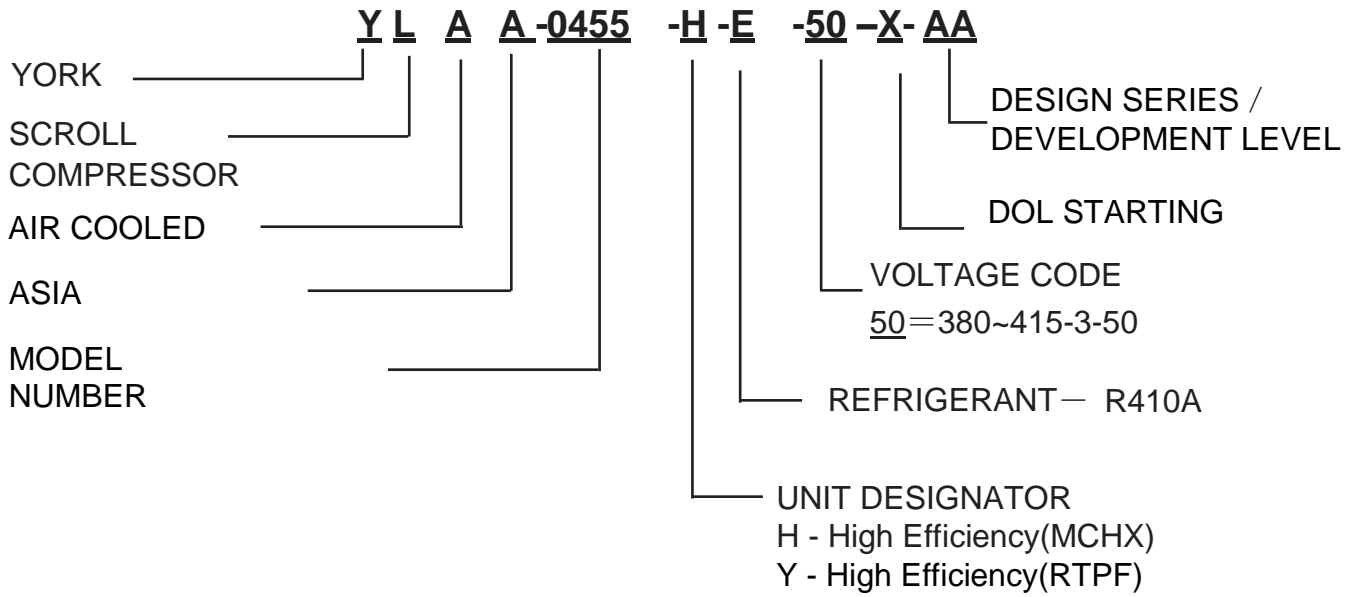
Table of Contents

Unit Nomenclature and Data Plate	3
Unit Identification Information	3
Refrigerant Circuit Components— Figure 1	4
Refrigerant Circuit PID—Figure 2	5
Discharge Circuit Components — Figure 3	6
Liquid Circuit Components — Figure 4	7
Suction Circuit Components — Figure 5	8
Suction Circuit Components — Figure 6	9
Suction Circuit Components — Figure 7	错误! 未定义书签。
Refrigerant Circuit Components — Figures 1 to 7	9
Refrigerant Circuit Components (continued) — Figures 1 to 5	11
Panel Components - Figure 8	12
Panel components— Figure 9	12
Panel Components— Figure 10	13
Transformer— Figure 11	14
Panel Components— Figure 8 to 11	14

All data in this document is subject to change without prior notice.

Unit Nomenclature and Data Plate

In order to ensure that the correct replacement parts are supplied please provide Johnson Controls Parts Centre with the **Unit Model and Serial No.** detailed on the unit data plate.




Unit Identification Information

The Unit identification information is a combination of four letters and the serial number (see example below). It is important that both the letters and the number are provided.

Typical identification information is: **50530E60111873**

Where the six letters identify the location and time of manufacture and the 6 numbers (including the 0) are the serial number.



Typical Unit Data Plate



Air-Cooled Screw Chiller

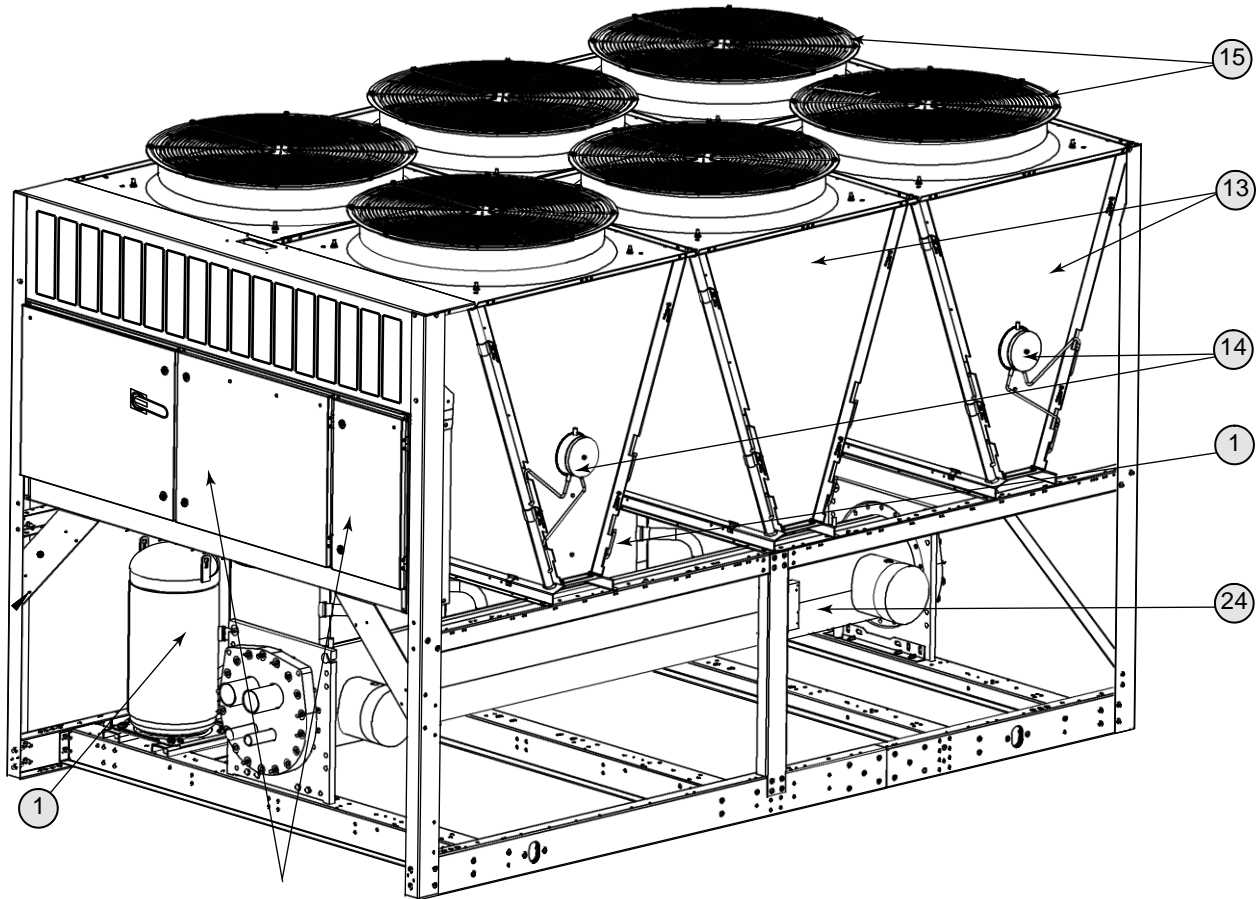
Model _____	Cooling Capacity _____ kW
Cooling Power _____ kW	Power Supply _____
Ref./Charge _____ kg	Max. Working Pres. _____ MPa
Dimension _____ mm	Weight _____ kg
Serial No. _____	MFG. Date _____

Licence No. XK06-015-00244

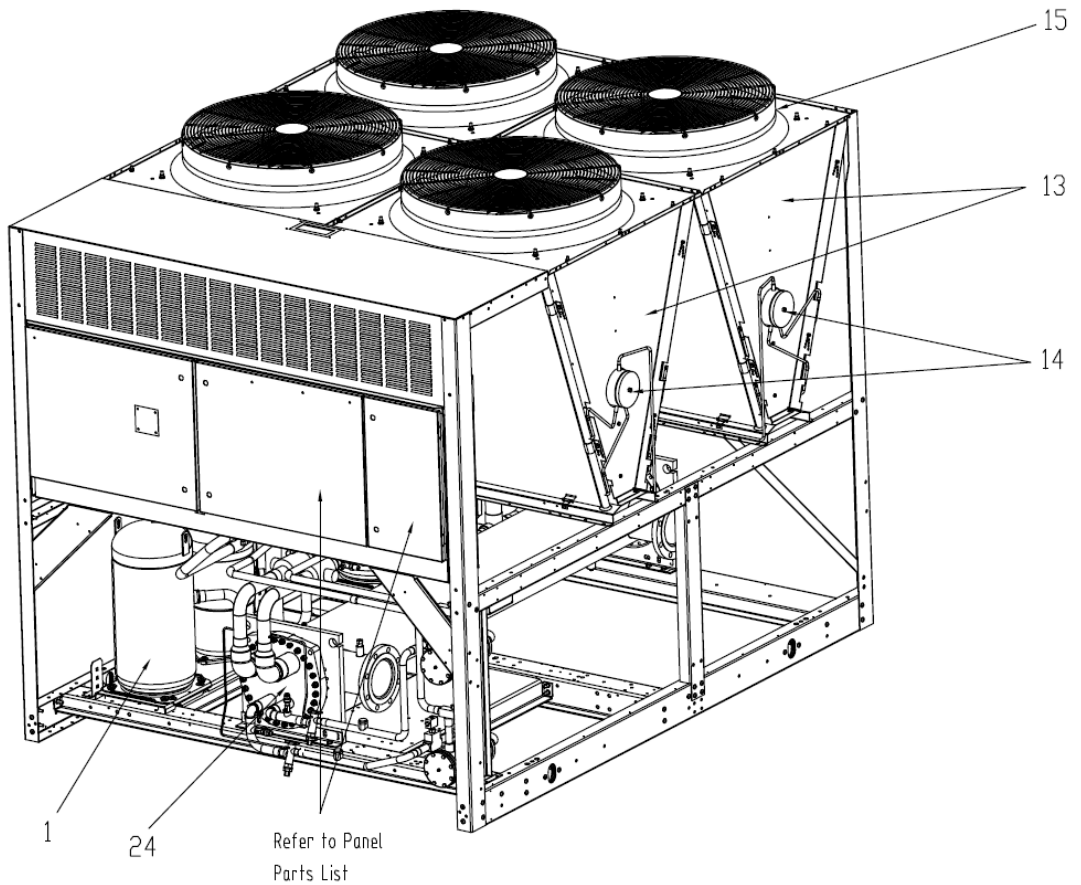



York Guangzhou Air Conditioning & Refrigeration Co., Ltd
 Xuetian, Longshan Town, Fogang County, Guangdong PC:511685 P. R. China

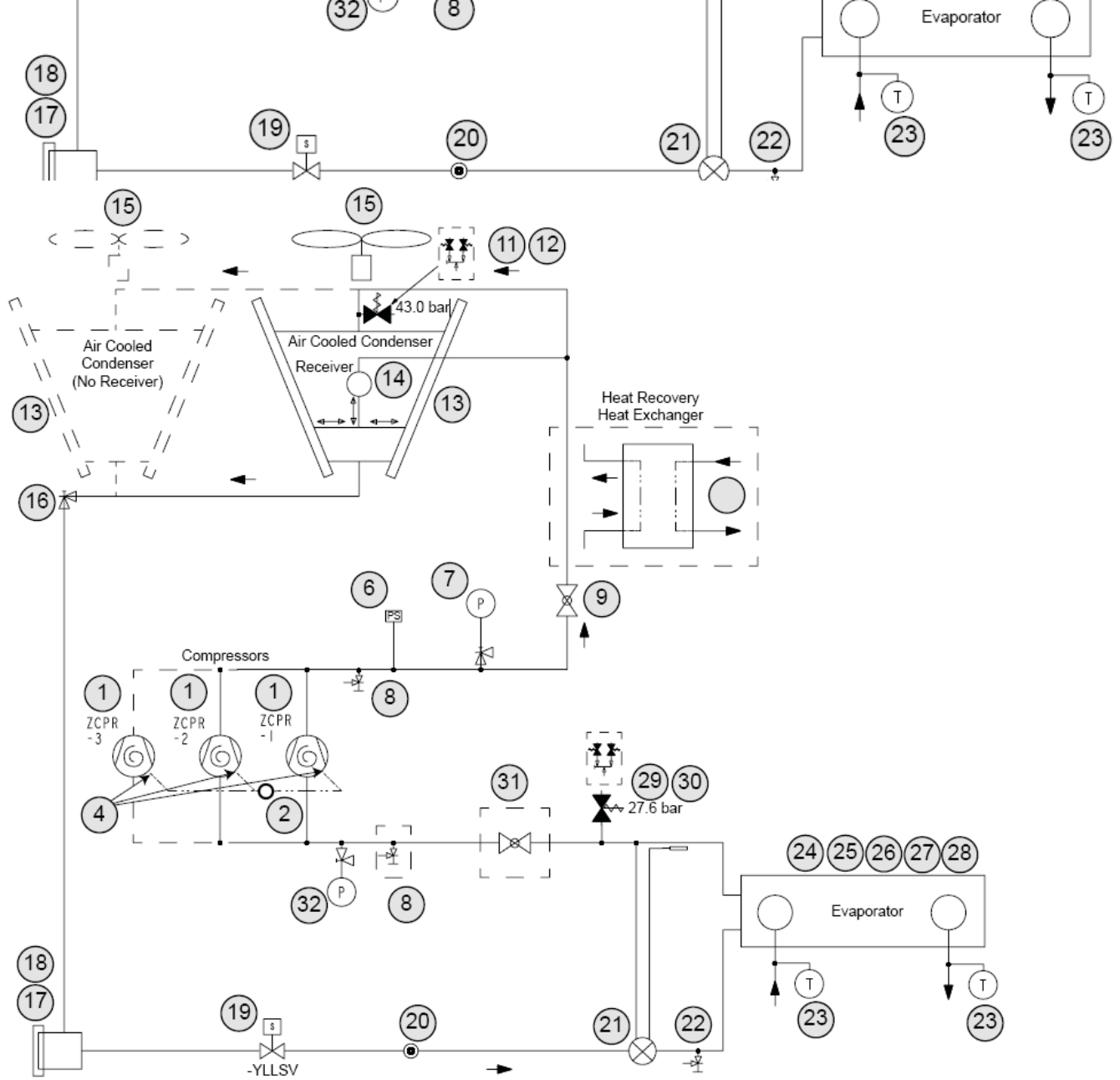
Refrigerant Circuit Components— Figure 1



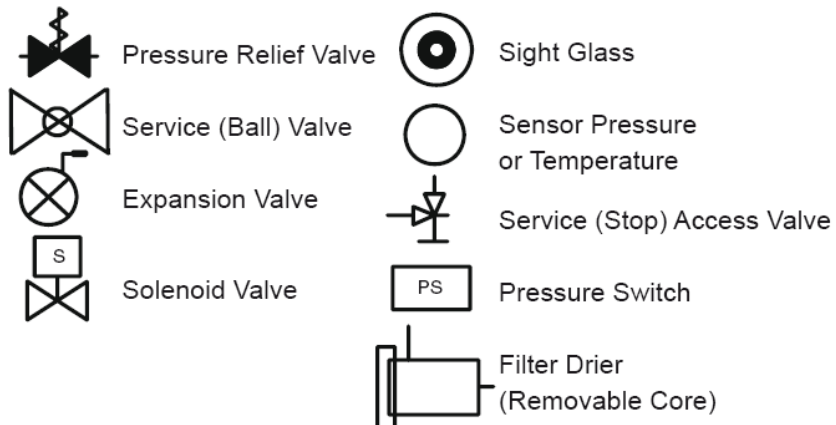
Refer to Panel
Parts List



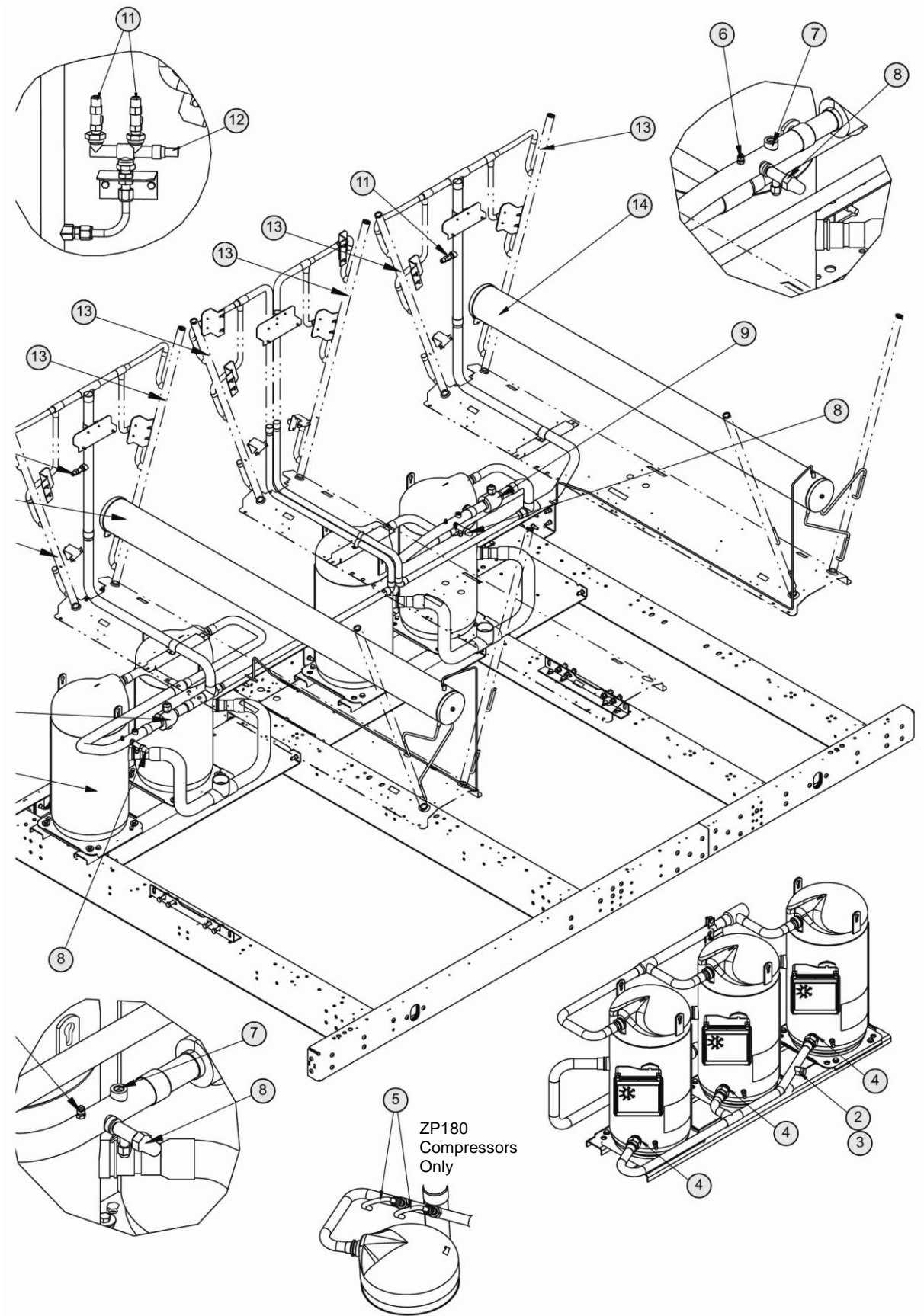
Refer to Panel
Parts List



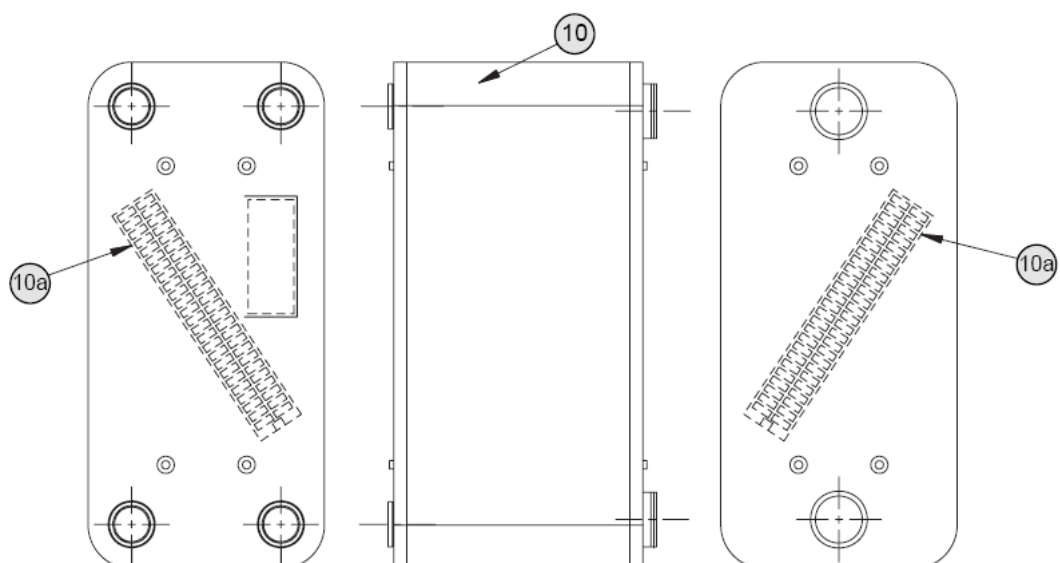
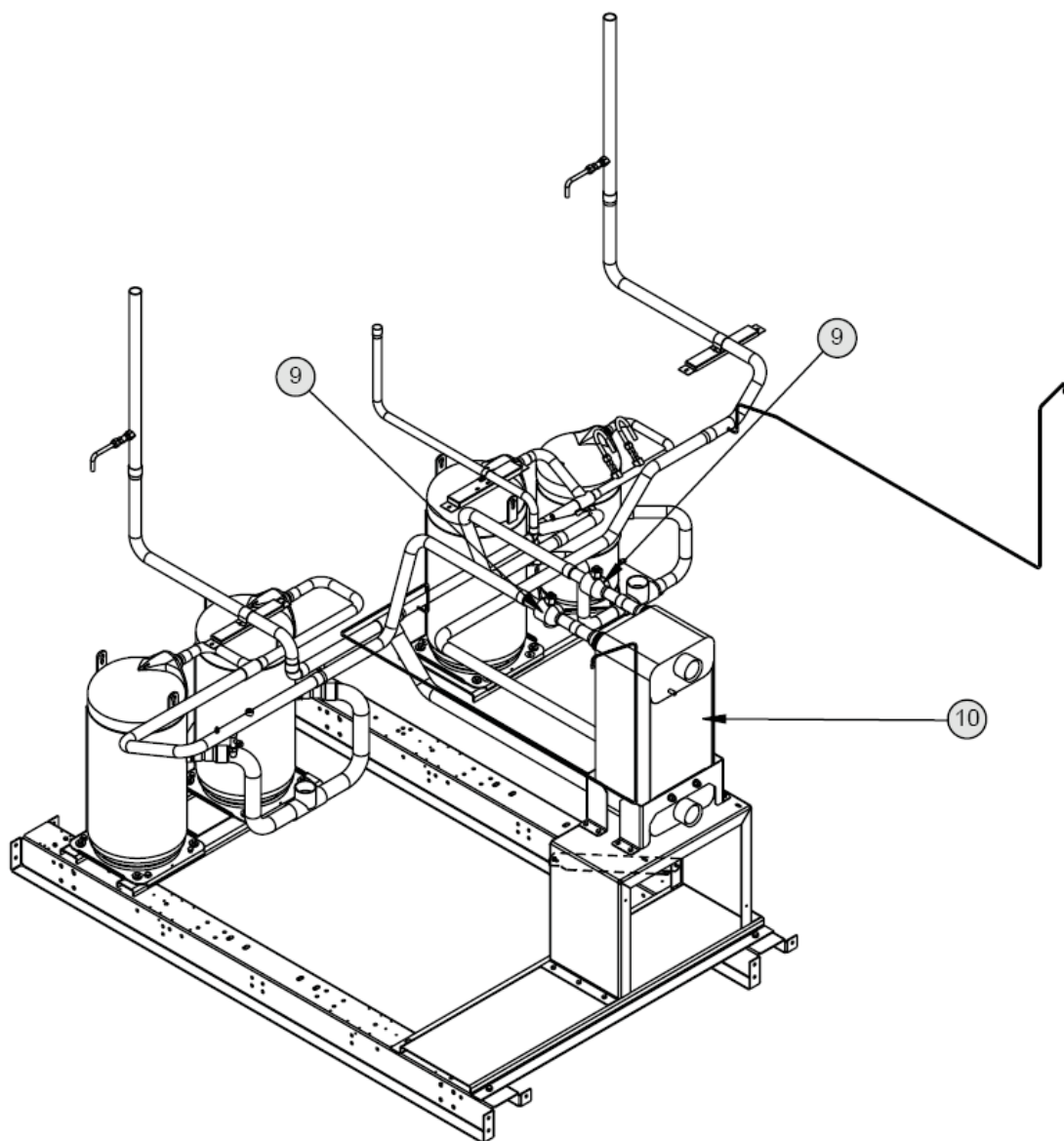
Components:



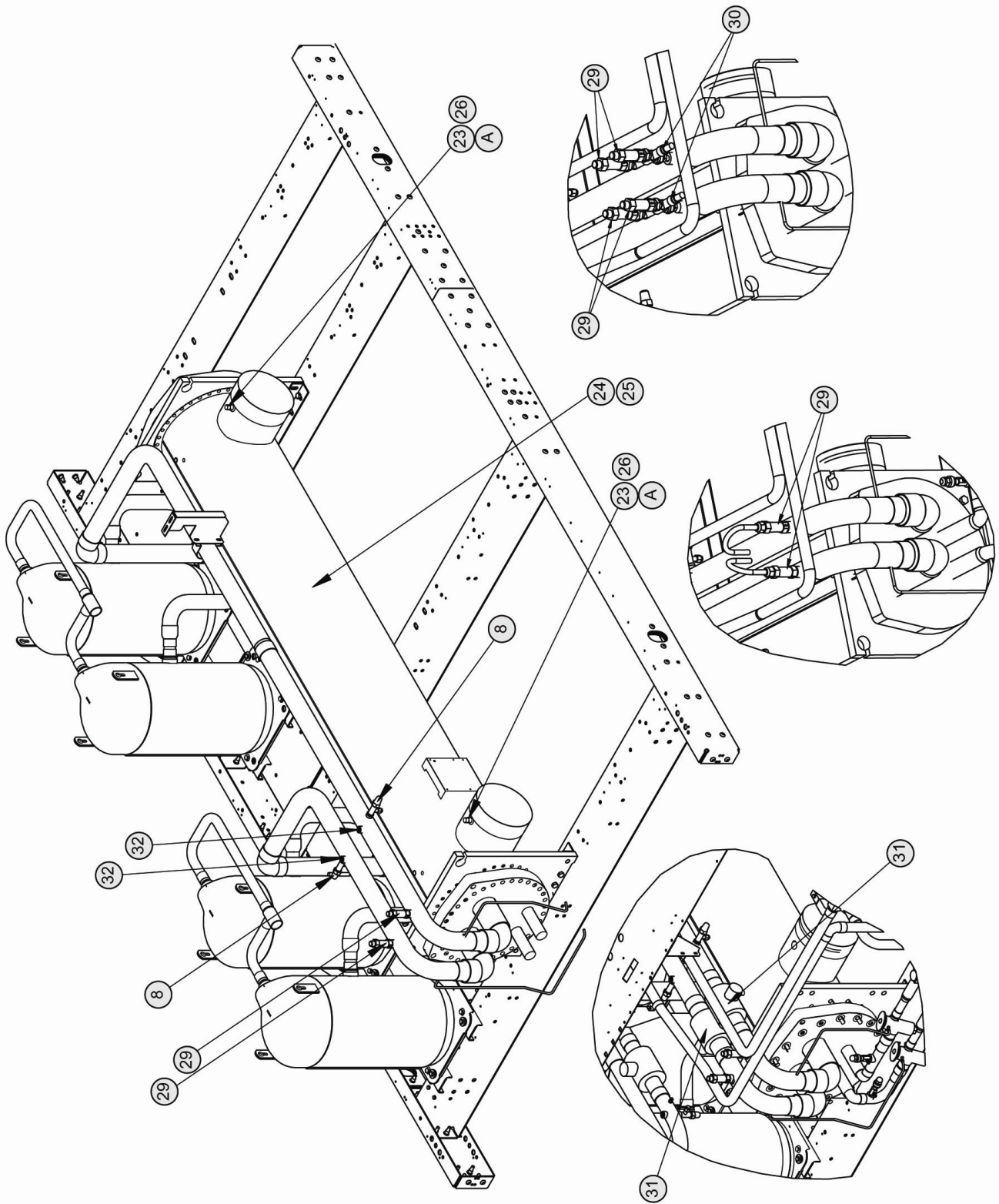
Discharge Circuit Components — Figure 3



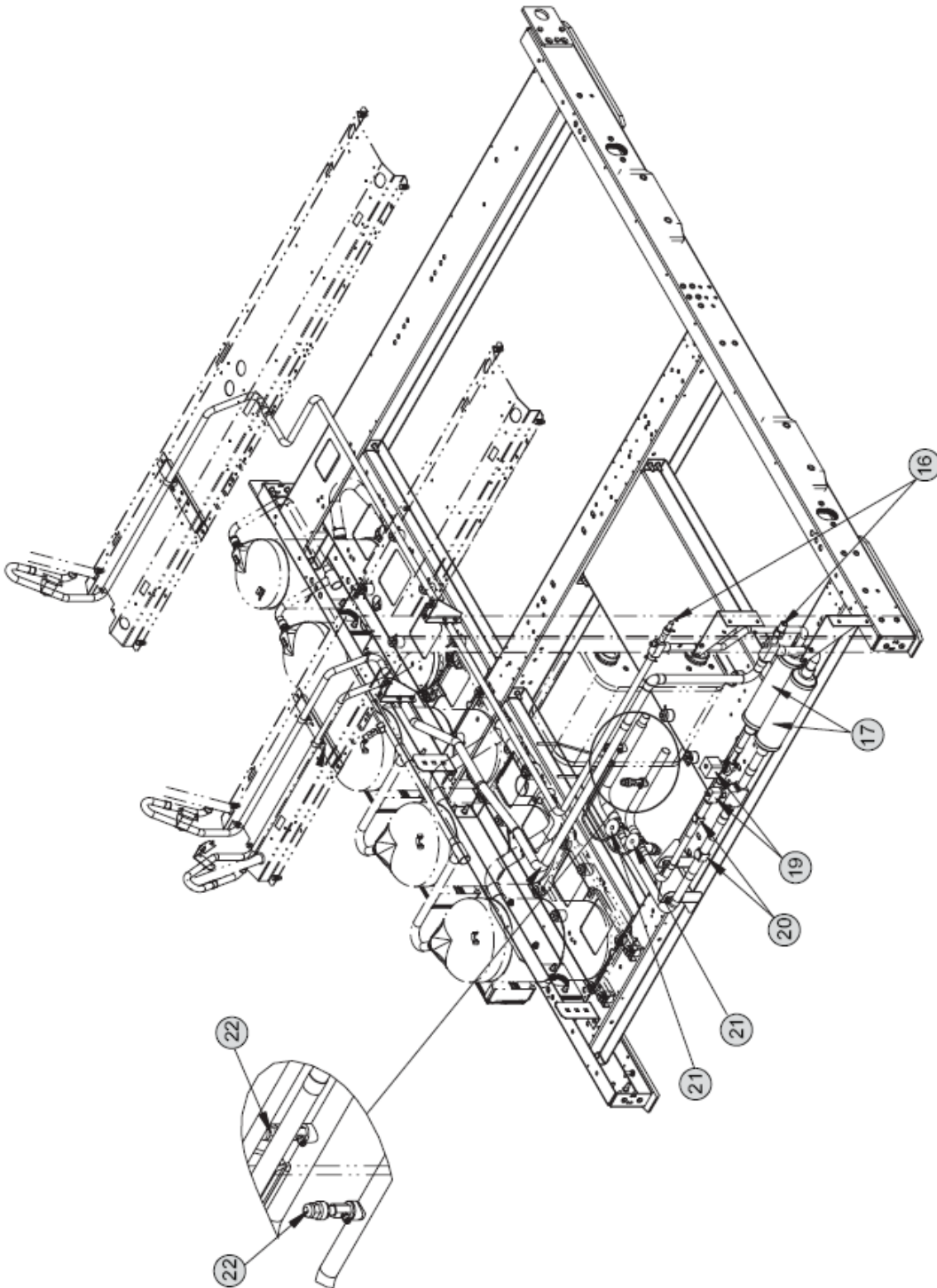
Liquid Circuit Components — Figure 4



Suction Circuit Components — Figure 5



Suction Circuit Components — Figure 6



Refrigerant Circuit Components — Figures 1 to 6

			YLA00195HE/VE	YLA00220HE/VE	YLA00260HE/VE	YLA00300HE/VE	YLA00350HE/VE	YLA00390HE/VE	YLA00440HE/VE	YLA00455HE/VE	YLA00515HE/VE
1	Compressor, Scroll ZP154	524071	2	/	/	/	/	/	/	/	/
	Compressor, Scroll Z P 180	430872	3	3	2	1	/	1	/	/	/
	Compressor, Scroll Z P 385	430874	/	1	2	3	4	4	5	3	6
	Compressor, Scroll Z P 295	430873	/	/	/	/	/	/	/	3	/
1A	Heater, Crankcase 120 V / 70 W	117990	2	/	/	/	/	/	/	/	/
	Heater, Crankcase 240 V / 70 W	694136	2	/	/	/	/	/	/	/	/
	Heater, Crankcase 120 V / 90 W	739797	3	3	2	1	/	1	/	/	/
	Heater, Crankcase 240 V / 90 W	694137	3	3	2	1	/	1	/	/	/
	Heater, Crankcase 120 V / 150 W	739480	/	1	2	3	4	4	5	6	6
	Heater, Crankcase 240 V / 150 W	694138	/	1	2	3	4	4	5	6	6
1B	Blanket, Acoustic (Option)	570439	2	/	/	/	/	/	/	/	/
	Blanket, Acoustic (Option)	502330	3	3	2	1	/	1	/	/	/
	Blanket, Acoustic (Option)	502332	/	1	2	3	4	4	5	6	6
2	Indicator, Moisture Cap	740967	3	3	4	4	4	4	4	4	4
3	Indicator, Moisture Body	524762	1	/	/	/	/	/	/	/	/
	Indicator, Moisture Body	740965	2	2	2	2	2	1	1	1	/
	Indicator, Moisture Body	740966	/	1	2	2	2	3	3	3	4
4	Gasket, Oil	742065	3	4	4	4	4	5	5	6	6
5	Valve, Relief (Systems with ZP180 Compressors)	570977	1	3	4	2	/	2	/	/	/
6	Switch, HP—Internal Reset	410878	2	2	2	2	2	2	2	2	2
7	Transducer, 0—650 PSI	392055	2	2	2	2	2	2	2	2	2
7A	Valve, Transducer	694174	2	2	2	2	2	2	2	2	2
9	Valve, Ball- Shut off 1-3/8"	694167	1	/	/	/	/	/	/	/	/
	Valve, Ball- Shut off 1-5/8"	694168	1	2	2	2	2	1	1	/	/
	Valve, Ball- Shut off 2-1/8"	694169	/	/	/	/	/	1	1	2	2
11	Valve, Relief—650 P S I	570977	2	2	2	2	2	2	2	2	2
12	Valve,3-Way Dual Shut Off (option)	/	N/A								
13	Microchannel (Aluminum)	741223	3	4	4	5	6	6	7	8	8
14	Receiver (MHCX Unit)	741153	/	/	/	/	1	2	1	2	2
		679775	2	2	2	2	1	/	1	/	/
15	Motor, Fan	863998	2	/	/	/	/	/	/	/	/
	Motor, Fan	810169	2	4	4	5	6	6	7	8	8
15A	Impeller, Fan	533239	2	/	/	/	/	/	/	/	/
	Impeller, Fan	440497	2	4	4	5	6	6	7	8	8
15B	Guard, Fan	533482	4	4	4	5	6	6	7	8	8
16	Valve, Service—Liquid Line-7/8	694175	1	1	/	/	/	/	/	/	/
	Valve, Service—Liquid Line-1-1/8	694176	1	1	2	2	2	1	1	/	/
	Valve, Service—Liquid Line-1-3/8	694177	/	/	/	/	/	1	1	2	2
17	Drier, Filter —1 Core	371982	1	1	/	/	/	/	/	/	/
	Drier, Filter —2 Core	415229	1	1	2	2	2	1	1	1	/

	Drier, Filter —3 Core	741132	/	/	/	/	/	1	1	1	2
18	Core, Filter Drier	740964	3	3	4	4	4	5	5	5	6
19	Valve, Solenoid-Liquid Line 7/8"(120V)	878908	1	1	/	/	/	/	/	/	/
		855945	1	1	/	/	/	/	/	/	/
	Valve, Solenoid-Liquid Line 7/8"(240V)	878908	1	1	/	/	/	/	/	/	/
		855946	1	1	/	/	/	/	/	/	/
	Valve, Solenoid-Liquid Line 1-1/8"(120V)	855944	1	1	2	2	2	1	1	1	/
		855945	1	1	2	2	2	1	1	1	/
	Valve, Solenoid-Liquid Line 1-1/8"(240V)	855944	1	1	2	2	2	1	1	1	/
		855946	1	1	2	2	2	1	1	1	/
	Valve, Solenoid-Liquid Line 1-3/8"(120V)	855943	/	/	/	/	/	1	1	1	2
		855945	/	/	/	/	/	1	1	1	2
	Valve, Solenoid-Liquid Line 1-3/8"(240V)	855943	/	/	/	/	/	1	1	1	2
		855946	/	/	/	/	/	1	1	1	2
20	Indicator ,lens	740967	3	4	3	4	3	4	4	4	4
	Indicator, Moisture 7 / 8 "	524762	1	1	/	/	/	/	/	/	/
	Indicator, Moisture 1— 1 / 8 "	740965	2	2	2	2	2	1	1	1	/
	Indicator, Moisture 1— 3 / 8 "	740966	/	1	1	2	1	3	3	3	4
21	Valve, TEV TGEL20-23	440596	1	/	/	/	/	/	/	/	/
	Valve, TEV TGEL40-35	371841	1	2	2	1	/	/	/	/	/
	Valve, TEV TRE40-55L	739877	/	/	/	1	2	1	/	/	/
	Valve, TEV TRE80-80L	739946	/	/	/	/	/	/	1	1	/
	Valve, TEV TRE80-100L	739942	/	/	/	/	/	1	1	1	2
22	Valve, Stop-Angle NPT1/4	694172	2	2	2	2	2	2	2	2	2

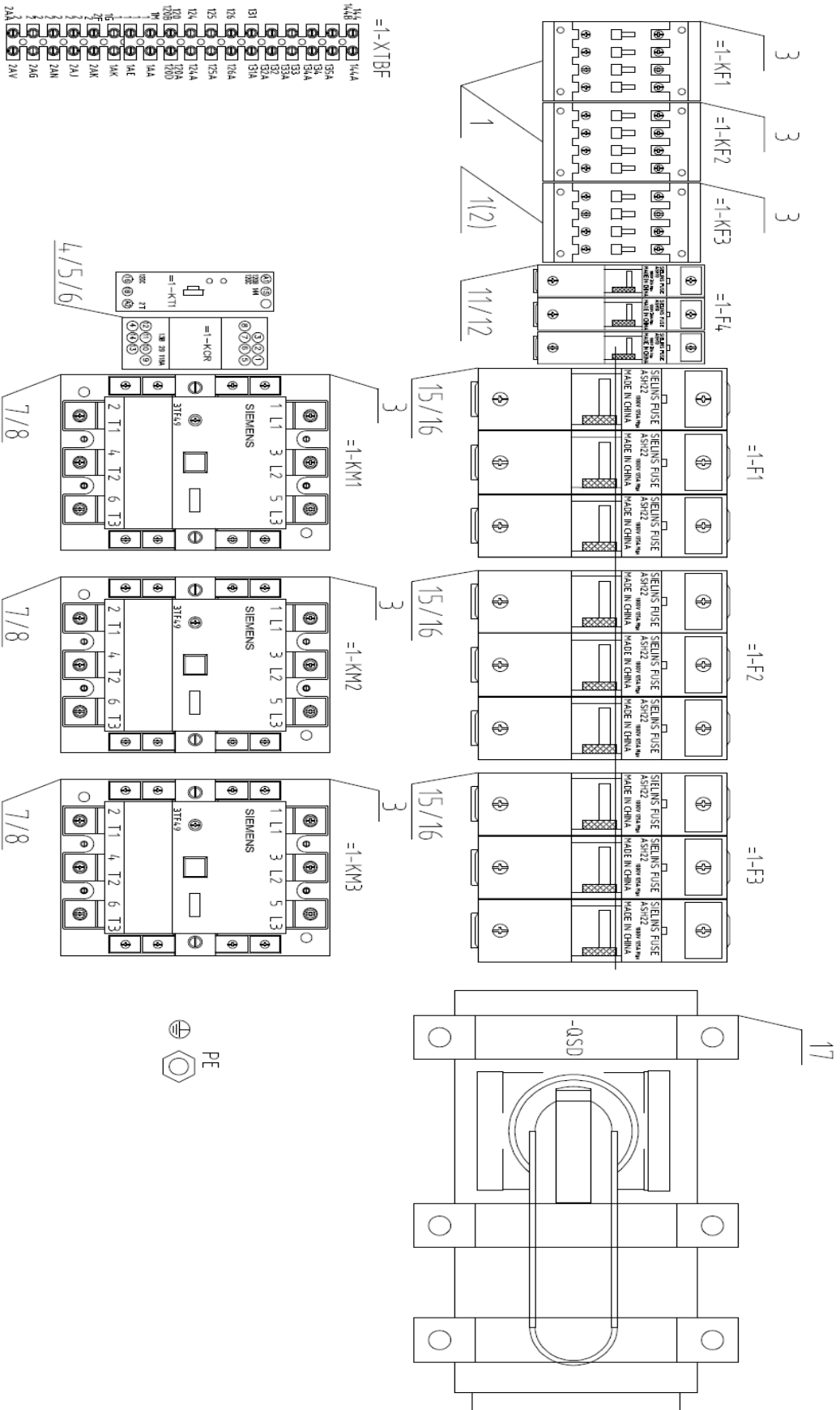
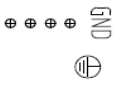
In order to ensure that the correct replacement parts are supplied, please provide Johnson Controls York Parts Centre with the **Unit Model and Serial No.** detailed on the unit data plate.

Refrigerant Circuit Components (continued) – Figures 1 to 6

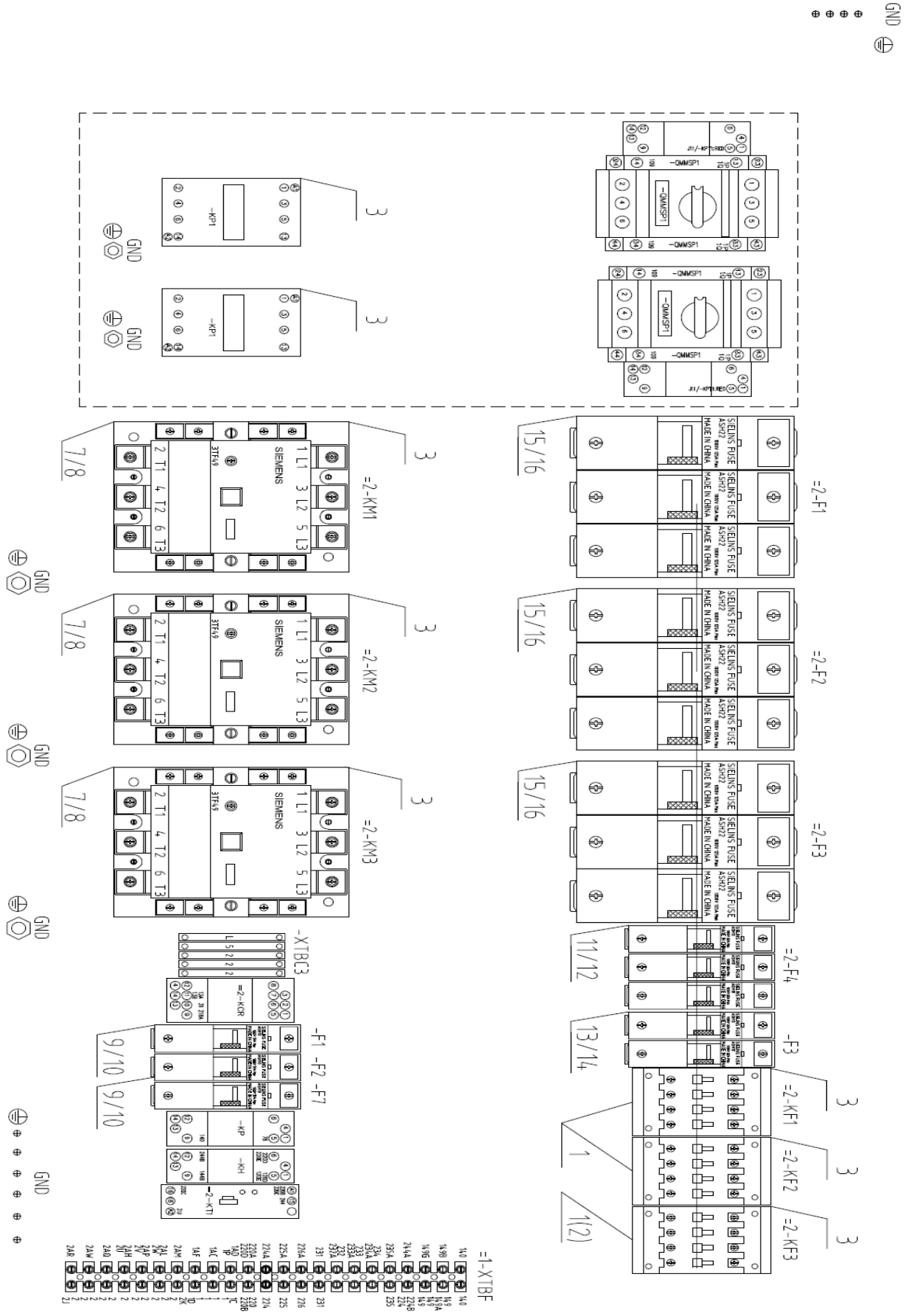
			YLA0195HE/YE	YLA0220HE/YE	YLA0260HE/YE	YLA0300HE/YE	YLA0350HE/YE	YLA0390HE/YE	YLA0440HE/YE	YLA0455HE/YE	YLA0515HE/YE
23	Sensor, Temperature	401192	2	2	2	2	2	2	2	2	2
24	COOLER 19MM INS/FLG (120V)	792397	1	1	/	/	/	/	/	/	/
	COOLER 19MM INS/FLG (120V)	792387	/	/	1	1	/	/	/	/	/
	COOLER 19MM INS/FLG (120V)	792405	/	/	/	/	/	/	1	/	/
	COOLER 19MM INS/FLG (120V)	792360	/	/	/	/	1	/	/	1	/
	COOLER 19MM INS/FLG (120V)	793120	/	/	/	/	/	1	/	/	1
	COOLER 19MM INS/FLG (240V)	698592	1	1	/	/	/	/	/	/	/
	COOLER 19MM INS/FLG (240V)	698525	/	/	1	1	/	/	/	/	/
	COOLER 19MM INS/FLG (240V)	698523	/	/	/	/	/	/	1	/	/
	COOLER 19MM INS/FLG (240V)	698526	/	/	/	/	1	/	/	1	/
	COOLER 19MM INS/FLG (240V)	698524	/	/	/	/	/	1	/	/	1
25	Cooler Heater 120V/180W	444434	/	/	/	/	/	/	1	/	/
	Cooler Heater 120V/280W	65198	1	1	/	/	/	2	1	/	2
	Cooler Heater 120V/420W	117296	/	/	1	1	1	/	/	1	/
	Cooler Heater 240V	234255	1	1	2	2	2	2	2	2	2
26	Well, Thermo	/	N/A								
27	Victaulic Flange Kit	/	N/A								
28	Flow Switch (Option)	47786	1	1	1	1	1	1	1	1	1
29	Valve, Relief 450PSI	570978	2	2	2	2	2	2	2	2	2
30	Valve, 3-Way Dual shut off (Option)	/	N/A								
31	Valve, Ball- Shut off 1-3/8	694167	1	/	/	/	/	/	/	/	/
	Valve, Ball- Shut off 1-5/8	694168	1	2	2	2	2	1	1	/	/
	Valve, Ball- Shut off 2-1/8	694169	/	/	/	/	/	1	1	2	2
32	Angle valve 1/2ODXNPT1/4	694174	2	2	2	2	2	2	2	2	2
32P	Transducer, 0-400PSIS	392054	2	2	2	2	2	2	2	2	2
-	Sensor, Temperature Ambient Air	771355	1	1	1	1	1	1	1	1	1

In order to ensure that the correct replacement parts are supplied, please provide Johnson Controls York Parts Centre with the **Unit Model and Serial No.** detailed on the unit data plate.

Panel Components - Figure 7

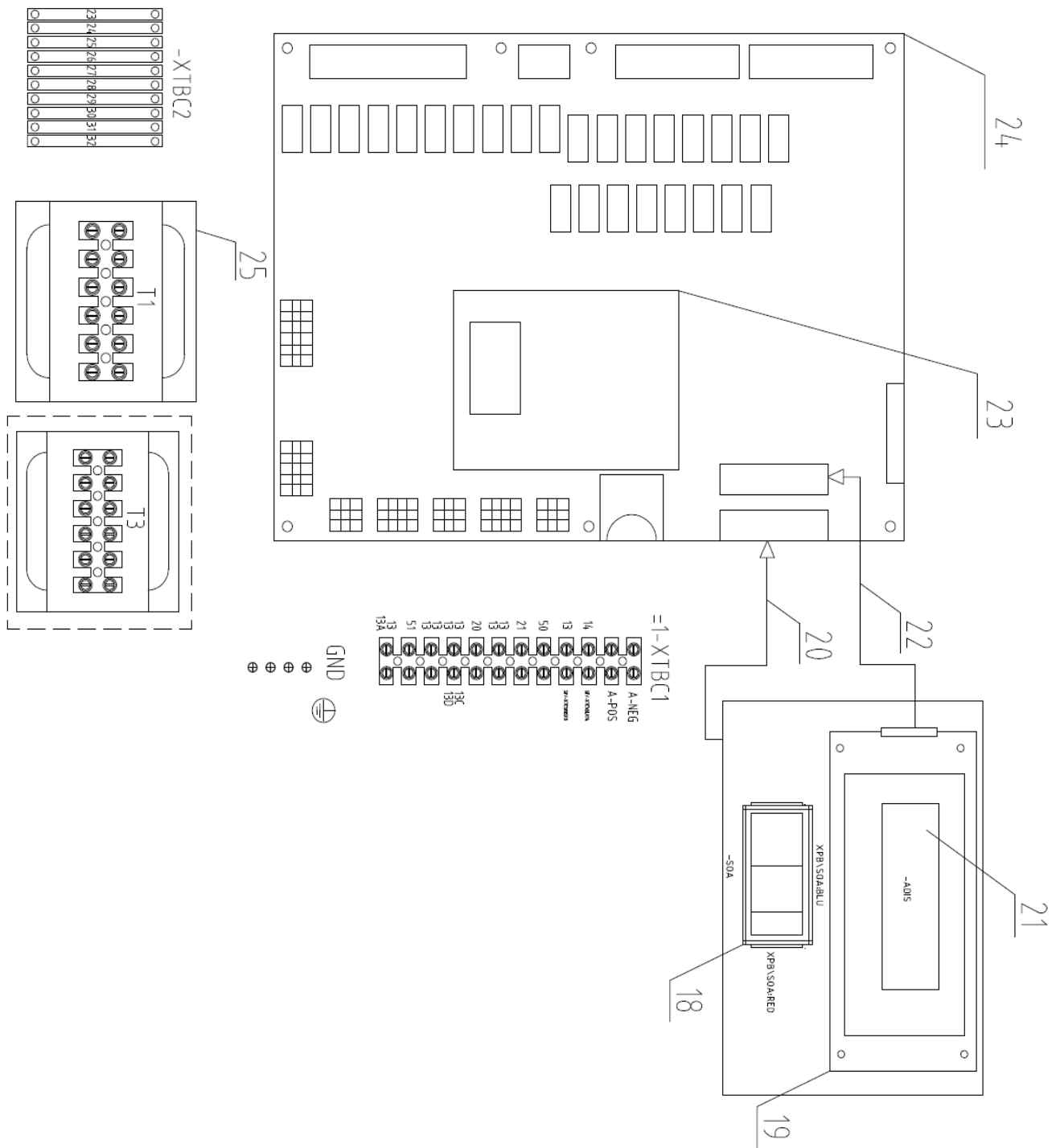


Panel components— Figure 8



GND

Panel Components— Figure 9



Transformer— Figure 10



26

			YLAA0195HE/YE	YLAA0220HE/YE	YLAA0260HE/YE	YLAA0300HE/YE	YLAA0350HE/YE	YLAA0390HE/YE	YLAA0440HE/YE	YLAA0445HE/YE	YLAA0515HE/YE
1	9A、120V Fan contactor (Standard)	439730	4	4	4	5	6	5	6	6	6
3	Suppressor, Fan Contactor 0—32A (Standard)	230058	4	4	4	5	6	5	6	6	6
4	Relay 110V 5A	513202	2	2	2	2	2	2	2	2	2
5	Relay holder	513206	2	2	2	2	2	2	2	2	2
6	Surge suppresser	230058	2	2	2	2	2	2	2	2	2
7	38A、120V Compressor Contactor (DOL)	541763	2	/	/	/	/	/	/	/	/
	45A、120V Compressor Contactor (DOL)	448120	3	3	2	1	/	1	/	/	/
	63A、120V Compressor Contactor (DOL)	448131	/	/	/	/	/	/	/	3	/
	85A、120V Compressor Contactor (DOL)	439729	/	1	2	3	4	4	5	3	6
8	Suppressor, Compressor Contactor (DOL)	230058	5	4	4	4	4	5	5	6	6
9	Fuse 10A GG (10*38)	545253	2	2	2	2	2	2	2	2	2
10	Fuse holder 1P (18*80*58)	545263	2	2	2	2	2	2	2	2	2
11	Fuse 20A AM (14*51)	545258	/	/	/	/	/	3	3	6	6
	Fuse 16A AM (14*51)	545838	/	/	/	3	6		3	/	/
	Fuse 16A AM (10*38)	545256	/	/	/	/	/	/	/	/	/
	Fuse 10A AM (10*38)	545254	3	6	6	3	/	3	/	/	/
	Fuse 6A AM (10*38)	545252	2	/	/	/	/	/	/	/	/
12	Fuse holder 2P (37*80*58)	545264	1	/	/	/	/	/	/	/	/
	Fuse holder 3P (10*38)	545265	1	2	2	1	/	1	/	/	/
	Fuse holder 3P (14*51)	545266	/	/	/	1	2	1	2	2	2
13	Fuse 16A A M (10*38)	545256	2	2	2	2	2	2	2	2	2
14	Fuse holder 2P (37*80*58)	545264	1	1	1	1	1	1	1	1	1
15	Fuse 40A A M (14*51)	545259	15	9	6	3	/	3	/	/	/
	Fuse 80A A M (22*58)	545260	/	/	/	/	/	/	/	9	/
	Fuse 100A A M (22*58)	545261	/	3	6	9	12	12	15	9	18
16	Fuse holder 3P (81*113*74)	545266	5	3	2	1	/	1	/	/	/
	Fuse holder 3P (105*128*77)	545267	/	1	2	3	4	4	5	6	6
17	Disconnect switch 400A, 1000V	511824	1	1	1	1	1	1	1	1	1
	Circuit breaker400A (with handle) (Option)	448915	/	/	1	1	1	1	1	1	1
	Circuit breaker250A (with handle) (Option)	541772	1	1	/	/	/	/	/	/	/
18	ON/OFF switch	100320	1	1	1	1	1	1	1	1	1
19	KEY board (English-With 7-core cable)	736305	1	1	1	1	1	1	1	1	1
20	Cable holder	737712	1	1	1	1	1	1	1	1	1
21	Display LCD	403582	1	1	1	1	1	1	1	1	1
22	LCD 16-core flat cable	439727	1	1	1	1	1	1	1	1	1
23	CPU BOARD	439723	1	1	1	1	1	1	1	1	1
24	I/O BOARD		1	1	1	1	1	1	1	1	1
25	Transformer. Logic Section	448118	1	1	1	1	1	1	1	1	1
26	Transformer. Control section (Units with HK)	740420	N/A								
	Transformer. Control section (Units without HK)	740188	1	1	1	1	1	1	1	1	1
—	50Hz ICOM Manual (Chinese) 150.72 — NM5	745536	1	1	1	1	1	1	1	1	1
—	50Hz ICOM Manual (English) 150.72 — NM5	745394	1	1	1	1	1	1	1	1	1
—	50Hz OI Manual (Chinese) 201.26 — O 11	512163	1	1	1	1	1	1	1	1	1
—	50Hz OI Manual (English) 201.26 — O 11	512328	1	1	1	1	1	1	1	1	1

In order to ensure that the correct replacement parts are supplied, please provide Johnson Controls York Parts Centre with the **Unit Model and Serial No.** detailed on the unit data plat