



BY JOHNSON CONTROLS

Service Information

File In/With: N/A

SI0297

New

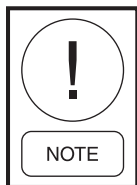
1214

Equipment Affected: YLAA, YVAA

Microchannel Coil Segment Preparation for Analysis

GENERAL

The following instructions are intended for preparing a coil OR a coil segment to be returned to the testing center in Milwaukee, WI. Coils with single leaks can follow all the listed instructions for sending a single segment for testing. If the coil has multiple leaks or other damage that would require sending multiple segments please contact the Screw and Scroll Chiller Technical Support Team to determine if the entire coil will need to be returned. If you have any questions regarding these instructions, please contact the Screw and Scroll Chiller Technical Support Team.



Seeing dirt or oil stain on the coil is not confirmation of a leak. A leak must be confirmed by pressurizing and leak checking the coil. If after confirming by leak check of the coil that the coil does have a leak, (refer to Figure 1) and if the exact location of the leak cannot be seen, the entire coil will need to be returned for evaluation.

STEP 1: Perform a proper leak check using a soap solution suitable for leak detection. Confirm the exact location of the leak. Once leak has been identified and located take a picture of the bubble formation as shown in *Figure 1*. This picture will be attached to the form in Appendix A.

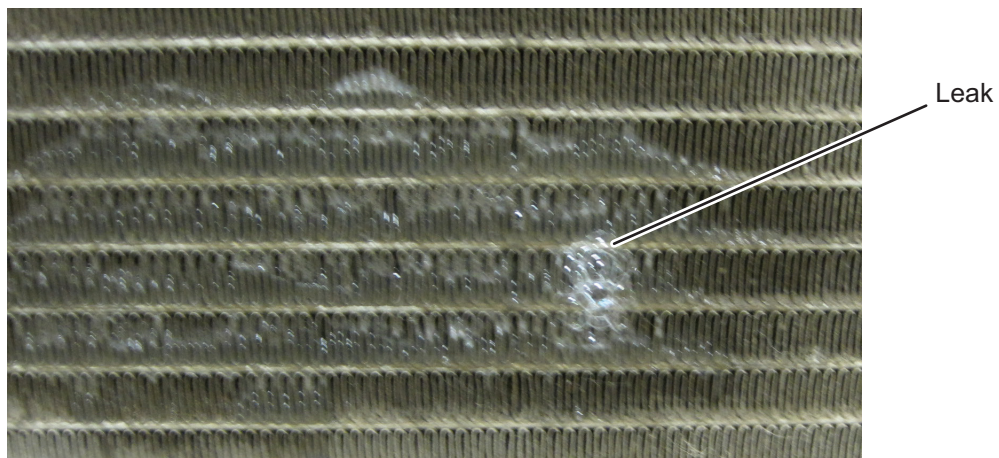


Figure 1

LD19106

Work on this equipment should only be done by properly trained personnel who are qualified to work on this type of equipment. Failure to comply with this requirement could expose the worker, the equipment and the building and its inhabitants to the risk of injury or property damage.

The instructions on this service bulletin are written assuming the individual who will perform this work is a fully trained HVAC & R journeyman or equivalent, certified in refrigerant handling and recovery techniques, and knowledgeable with regard to electrical lock out/tag out procedures. The individual performing this work should be aware of and comply with all Johnson Controls, national, state and local safety and environmental regulations while carrying out this work. Before attempting to work on any equipment, the individual should be thoroughly familiar with the equipment by reading and understanding the associated service literature applicable to the equipment. If you do not have this literature, you may obtain it by contacting a Johnson Controls Service Office.

Should there be any question concerning any aspect of the tasks outlined in this bulletin, please consult a Johnson Controls Service Office prior to attempting the work. Please be aware that this information may be time sensitive and that Johnson Controls reserves the right to revise this information at any time. Be certain you are working with the latest information.

Product Technical Support

STEP 2: Record all data to form in Appendix A.

STEP 3: Confirm the tube the leak is on and carefully remove the fins from around the tube so as not to damage tubes.

Confirm which tube leak is on.

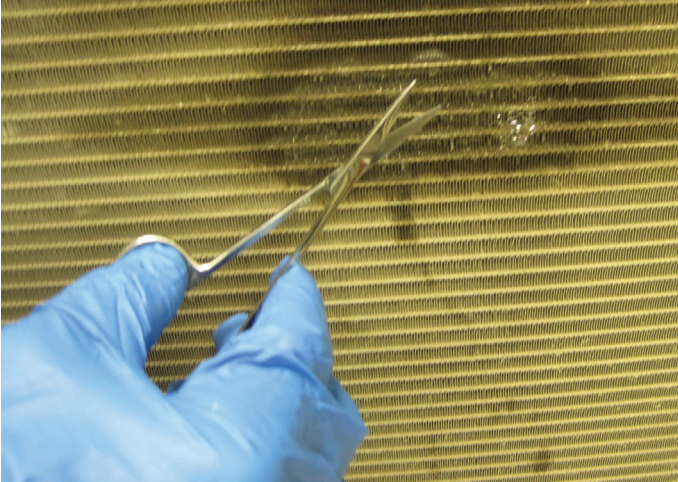


Figure 2



LD19107

STEP 4: Mark the leaking tube with wire ties by placing wire ties on either side of the tube where the leak is located. Try to center the ties around the leak for ease of identification.

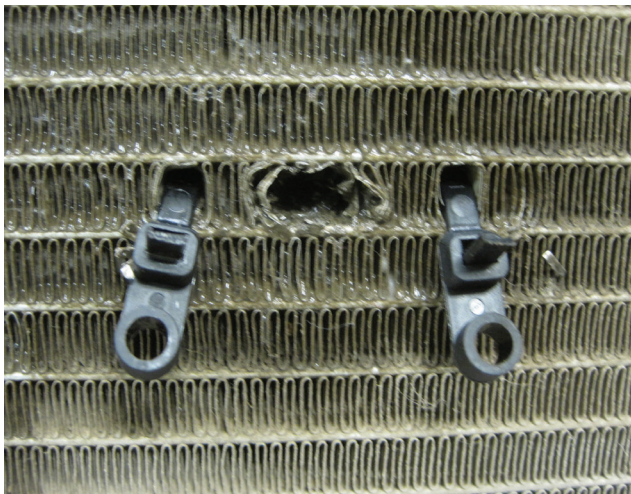
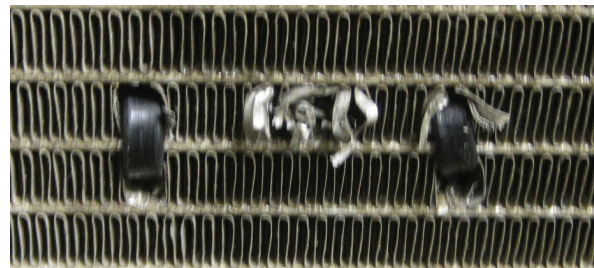


Figure 3



Backside of Coil Leak Area



Typical Plastic Wire Ties

LD19108

STEP 5: (coil segment only) Mark the area to be removed by leaving several rows above and below the leak and at least 4 inches on each side of the leak.

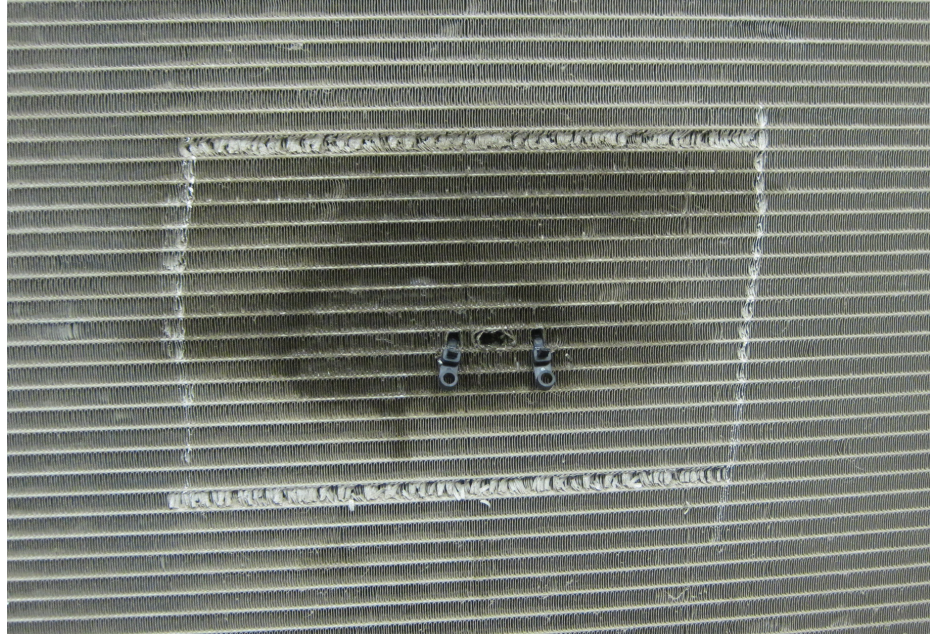


Figure 4

LD19109

STEP 6: (coil segment only) Remove the coil segment using an appropriate reciprocating saw.

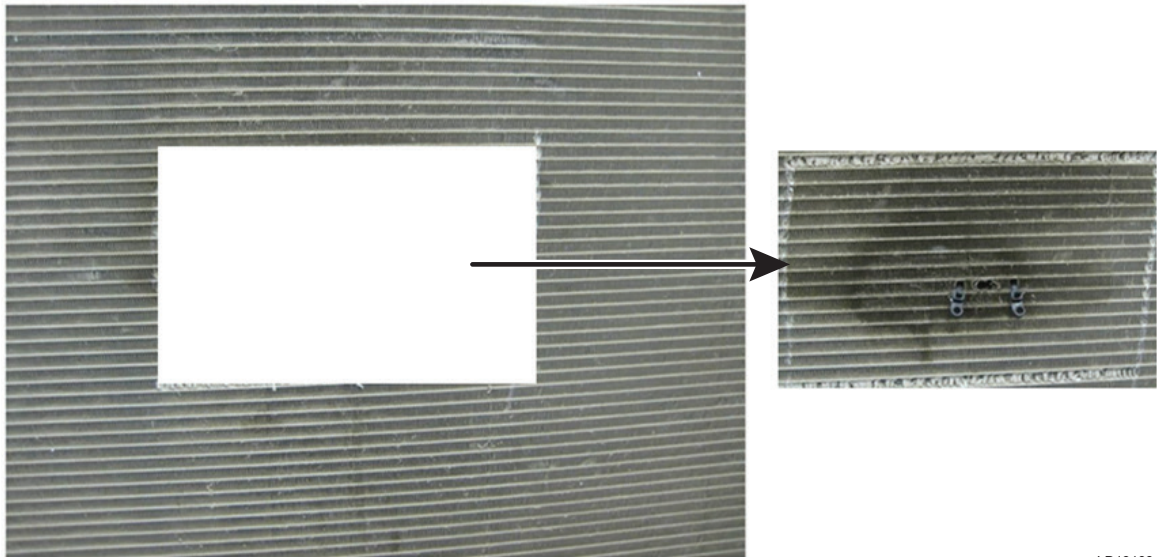


Figure 5

LD19109a

STEP 7: Package the coil segment in bubble wrap and or leak proof bag to ensure liquids do not spill into shipping container. If shipping the entire coil, make sure to retain the packaging from the replacement coil. This packaging will need to be used for shipping the coil back to the testing facility. Place a copy of the form from Appendix A in the shipping container along with the coil or coil segment.

STEP 8: Ship coil segment to: Tom Sanfelippo, B-35
 Manager Materials COE
 5757 N. Greenbay Avenue
 Milwaukee, WI 53209
 USA

APPENDIX A (include a copy in shipping container)**Coil Label Information**

Coil Manufacturer: _____

Coil Serial Number: _____

Coil Date Code: _____

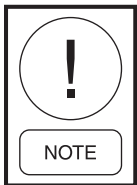
Unit Information

Unit Model Number: _____

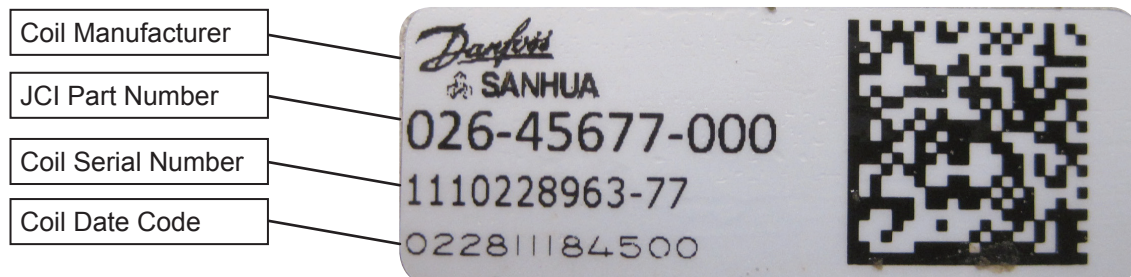
Unit Serial Number: _____

How long has the unit been in service? _____

Where, geographically, was this unit located? _____



Along with the above listed information, please attach pictures of the coil leak (Figure 1) as well as the coil data plate located on the edge of the coil (Example: Figure 6)



LD19109b

Figure 6