

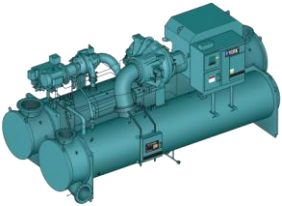
Chiller Solutions M-Letter  
**M15CS-15-M**  
*Internal Communication – Middle East*

**The Most Efficient YORK Centrifugal Chiller**

**YK-EP “Efficiency Plus” Mod B – The chiller to compete with *Daikin WCT*.**

Effective with the YORKworks 15.03a release, Chiller Solutions is pleased to announce the water-cooled centrifugal YK-EP “Efficiency Plus” Mod B chiller with capacity and efficiency improvements and a similar price per ton to our YK and Daikin WCT.

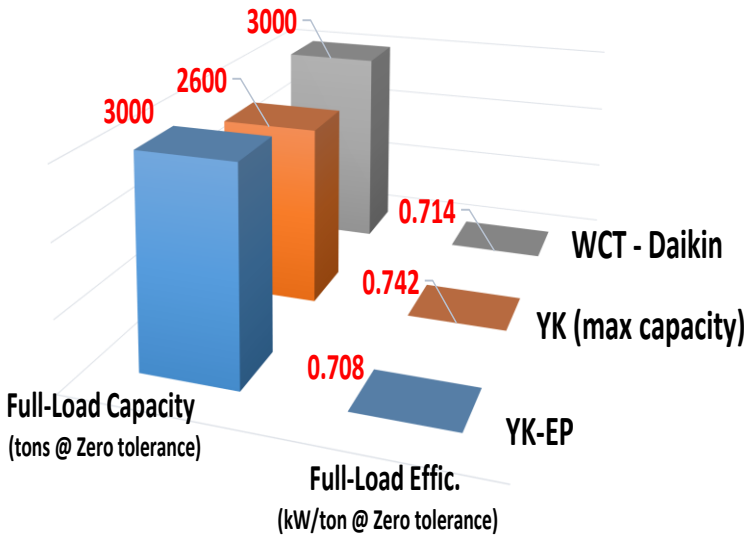
The YK-EP “Efficiency Plus” chiller is ideal for large tonnage applications; including, district cooling or large central plants (universities or airports) and gas-turbine inlet-air cooling.



**Extra Capacity at Typical Middle East Conditions**

**Parallel Piping Arrangement**

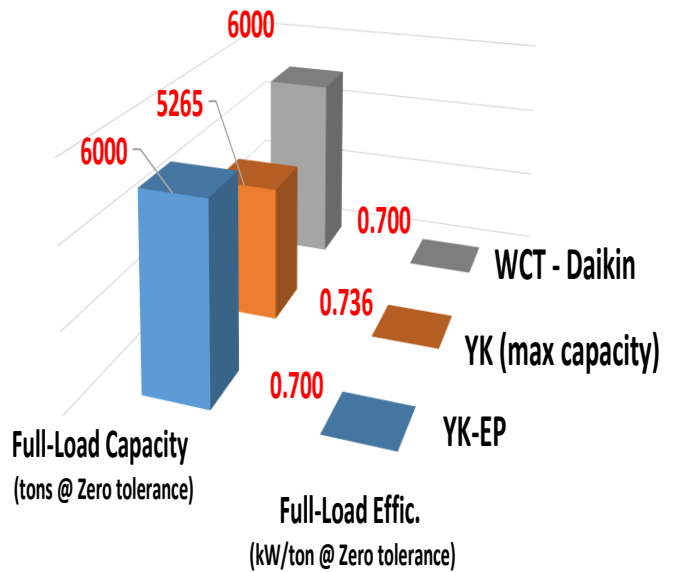
YK-EP mod B can achieve 3,000 tons at full load with performance, similar to WCT Daikin with zero tolerance rating.



Conditions: 40/56 °F & 95 °F @ 3 gpm/ton

**Series counter flow Piping Arrangement**

YK-EP mod B can achieve 6,000 tons a pair with full load with performance better than 0.7 kw/ton at zero tolerance rating.



Conditions: 40/56 °F & 95 °F @ 3 gpm/ton

Comments or Questions?

Contact Us ►

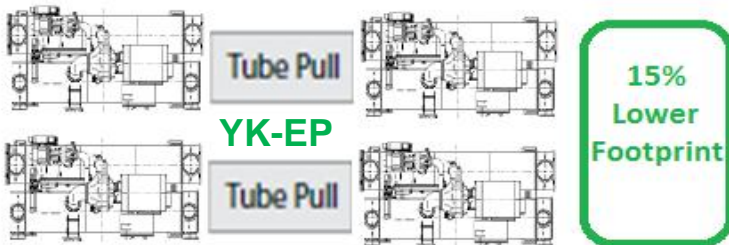
## The Most Efficient YORK Centrifugal Chiller YK-EP "Efficiency Plus" Mod B

### Improving Total Cost of Ownership

Ability to reduce operating footprint and add extra capacity in the chiller room.

YK-EP Mod B is the most compact configuration in its class. When paired in series counter flow, it makes 6,000 tons a perfect solution for district cooling application.

#### Typical room machine space required:



### NEW OptiView™ Control Panel



The **OptiView** control panel for chiller control and building system integration offers the same features as the YK product line: ELink, motor monitoring and motor space heater powered by OptiView, etc.

### Updated Sales Tools



- Customer Presentation for Middle East [16CB](#)
- Engineering Guide [160.77-EG2](#)
- Competitive Info [160.77-FAQ2](#)
- Sales Brochure (*coming soon*)

## NOW AVAILABLE!

### The following are additional YK-EP Model B enhancements:

- More capacity and performance than YK in case of using low entering condenser temperature.
- Motor monitoring OptiView option – same as YK chiller.
- Shipment improvements, when shipping conditions allow, the unit can be selected for a single piece shipment option (Form 2). *Check with Customer Service representative for road restrictions.*
- Lower price structure for larger diameter shells (C-C family) !
- Unit mounted MV solid-state-starter or floor mounted VSD option! Designed to save installation cost or improve off-design performance.
- More capacity with intermediate economizer temperature off-set adjustment.
- Lower sound level: The new economizer driveline configuration provides at least 2 dBa lower sound level than YK-EP mod A at full load.

### Recent WINS include:

- Hong Kong International Airport
- Girls College, Saudi Arabia
- Texas A&M
- Gainesville Regional Utility, FL



- YK-EP Selection Program at YCS2
- High Voltage VSD ratings (11 & 13.2 kV)
- 2D Drawings revised and Revit models
- New part load reports

Comments or Questions?

Contact Us ►