	File In/With:		SI0216	
			New	1209
	Equipment Affected:	YORK and Competitive HVAC Equipment		
Service Information	<b>JOHNSON CONTROLS</b> <b>Predictive Vibration Services</b> (ROC Predictive Technologies)			

## GENERAL

The main intent of this document is to communicate the predictive vibration services available through the Johnson Control's Predictive Diagnostics Team. Our field service organization should be leveraging this group as their primary source for vibration analysis services for all YORK and competitive HVAC equipment.



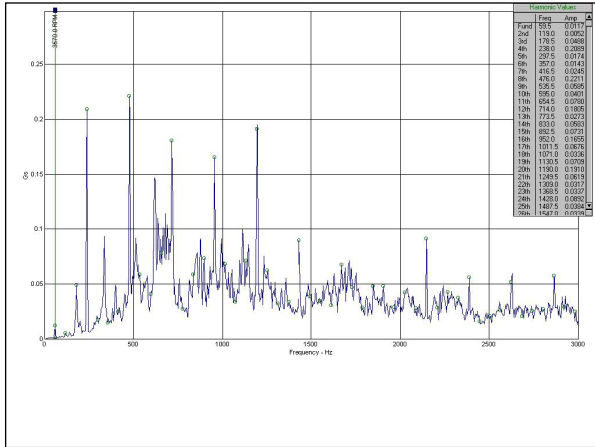
## PREDICTIVE SERVICES

The value of using the Johnson Controls Predictive Diagnostics Team is listed below:

- Johnson Controls maintains the largest compilation of vibration data on all brands of chillers in the world.
  - Data is stored indefinitely to help produce statistically derived alarm limits.
  - Data is also used to develop future diagnostic capabilities in current and future product lines.
  - Data is easily shared with the factory for warranty problems or other troubleshooting issues requiring their assistance.
  - Repetitive data collection can be used to determine individual equipment deterioration rates.
  - Provides proof of purchase before and after a chiller tear down service through pre and post reporting.
- The team works closely with our service branches to troubleshoot not only vibration issues, but leverage knowledge to help with other technologies such as oil, refrigerant and motor testing. Multiple technologies (vibration, motor, refrigerant and oil testing) are used in concert to formulate and communicate an expert opinion.
- The team provides a professional report that includes results and suggested course of action. They are available to help communicate specific findings to individual customers if needed.
- The team maintains a supply of predictive equipment available for rent along with the applicable accessories.

## EQUIPMENT RENTAL VS. PURCHASING:

Each service group should evaluate renting or purchasing vibration analysis equipment based on history of usage, equipment service base and business requirements. As mentioned previously, the predictive team maintains a supply of predictive equipment available for rent along with the applicable accessories. The equipment is maintained, calibrated and upgraded as per the manufacturer's recommendations.



## ADDITIONAL INFORMATION:

The following information is available on the link listed below:

- Instructions for renting and/or the purchase of equipment.
- Instructions for collecting vibration data on various types/manufacturer's equipment.
- Instructions for using the data logger and uploading the data for analysis.
- Sample chiller, fan and pump reports.
- Sales Information and Brochures.

## [PREDICTIVE DIAGNOSTICS HOME PAGE](#)

## CONTACT INFORMATION:

For additional information, please contact either John Kucher or Joe Keckeisen.

### Joe Keckeisen – Sr. Engineer

Phone: (414) 524-4809

E-mail: [joseph.e.keckeisen@jci.com](mailto:joseph.e.keckeisen@jci.com)

### John Kuchler – Manager – Predictive Diagnostics Team

Phone: (414) 524-4824

E-mail: [john.f.kuchler@jci.com](mailto:john.f.kuchler@jci.com)