	<b>LONG-TERM STORAGE REQUIREMENT - FIELD PREPARATION YIA, YPC ABSORPTION CHILLERS</b>	
	<b>SERVICE POLICY &amp; PROCEDURES</b>	Supersedes: Nothing

**Failure to comply with these requirements will render  
any written or implied YORK warranty null and void.**

## **I. Supplementary Documentation**

The following documentation is required to FULLY COMPLY with the Long-Term Storage requirements.

- A. Long-Term Storage Requirements – GENERAL (refer to Form 50.20-NM1)
- B. Long-Term Storage Requirements – PERIODIC CHECK LIST AND LOGS (YIA, YPC)  
(refer to Form 50.20-CL4)

## **II. Field Preparation For Long-Term Storage**

### **A. GENERAL**

1. Remove and dispose of shipping bag.
2. Perform a visual inspection of the chiller. Note any damage in the Field Comments section of the Periodic Check List and Log Sheet (50.20-CL4).
3. Touch up any paint that has worn or chipped off using paint supplied in ship loose items. Prepare the surface as required using a wire brush.
4. Verify that all ship loose items are present. Note any missing items on the Periodic Check List and Log Sheet (50.20-CL4).

### **B. ELECTRICAL EQUIPMENT AND COMPONENTS**

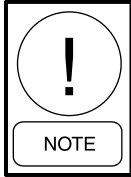
(Control Panels, Power Panels, Option Panels, Motors, etc.)

1. Electrical Equipment and Components shall not be stored or left in an outdoor environment.
2. Electrical Equipment and Components shall not be stored or left in a wet or damp environment. Components sealed in plastic shrink-wrap do not exempt this requirement. Moisture will collect inside the plastic, resulting in corrosion of the cabinet, the electronic components and/or copper bus bars.
3. YORK Vapor Emitter(s) shall be installed inside each electrical and electronic components cabinet(s) to protect against corrosion. Openings in cabinets shall be taped closed to minimize air infiltration during the storage period. The quantity of emitters is determined by measuring the gross volume of space the component occupies. YORK Part Number 026-37705-000 will protect a volume up to 5 cubic feet. YORK Part Number 026-37706-000 will protect a volume up to 11 cubic ft. Both emitters have a service life of 12 months.

## B. MECHANICAL

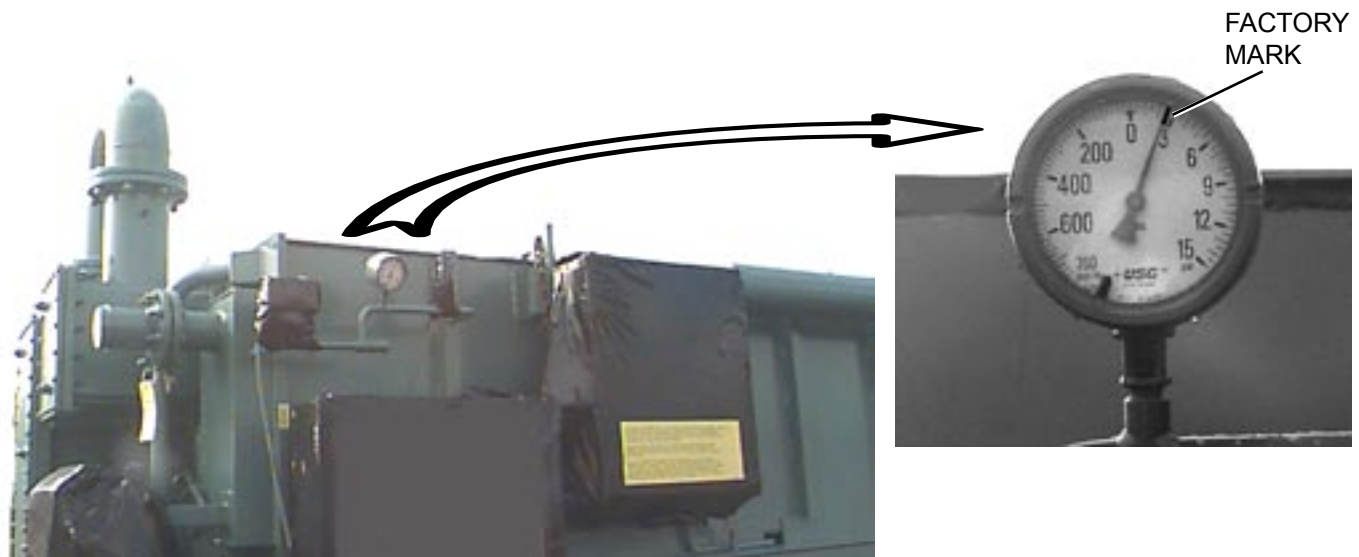
### 1. Shell Side

- a. Absorption Chillers are shipped with a nitrogen holding charge of 5 psig, deep vacuum or as marked at the factory on high pressure generator pressure gauge. Use pressure gauge already installed on chiller. All valves and valve caps must be closed and tight.



*Note that small pressure variations are normal due to changes in ambient temperature.*

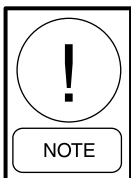
- b. Record shell pressure on Form 50.20-CL4, Long-Term Storage Periodic Checklist and Logs. If pressure has dropped or was shipped in a vacuum, top-off charge until 5 psig is achieved and recheck. If pressure is zero, or the recharged chiller has lost pressure, a leak test procedure must be performed and leak repaired.



**FIG. 1 - EXAMPLE OF PRESSURE GAUGE ON UNIT WITH NITROGEN CHARGE**

### 2. Water Sides

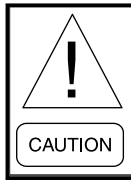
- a. Tube Bundles Inspection and Preparation (Evaporator water side and Absorber/Condenser water side bundle)



*Some "S" units have the crossover pipe shipped loose. For these units the absorber water side tube bundle shall be prepared separately from the condenser water side tube bundle.*

- 1). Remove existing nozzle shipping enclosures.

- 2). Inspect inside water box to insure that no moisture, corrosion or debris is present. Note any damage on Form 50.20-CL4, Long Term Storage Periodic Checklist and Logs.

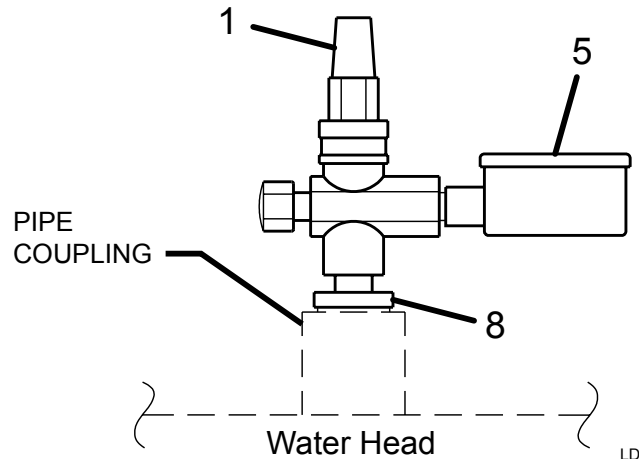


***The enclosures that are shipped standard from the factory are not designed to hold a positive pressure. They must be replaced.***

- 3). Replace with suitable enclosures. Refer to Tables 2 and 3.

**TABLE 1 - WATER BOX CONNECTIONS**

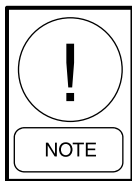
#	DESCRIPTION	P/N
1	Valve	022-09539-000
5	Guage	026-18920-000
8	3/4 to 1/4 Reducer	023-01039-000



**FIG. 2 - WATER BOX CONNECTIONS**

LD10446

- 4). Inspect all threaded fittings and clean with Loctite 7070. Replace all fittings.
- 5). Install fittings on water box vent connections as shown in Fig. 2.
- 6). Drain and dry bundles. Remove drain plugs/caps. Attach a nitrogen regulator to a nitrogen cylinder using a suitable hose. Purge dry nitrogen (approximately 1/2 psig) through bundle for at least 20 minutes to assure that no moisture is present in the bundles.

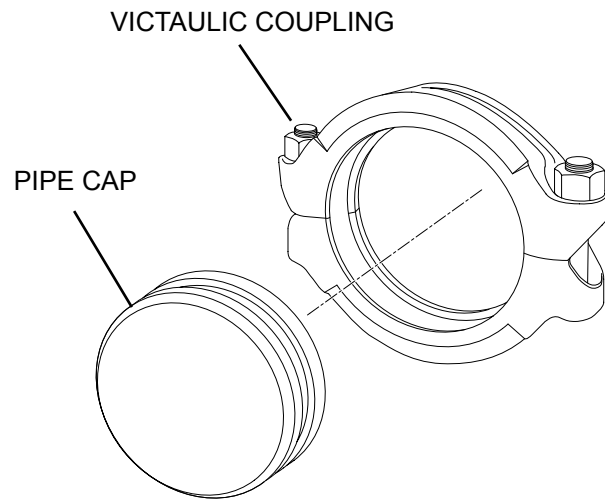


***The presence of moisture can be verified by placing a mirror under the drain connection. If moisture is present, the mirror will have a tendency to fog.***

- 7). Once bundles dry, shut off nitrogen supply, reinstall drain fitting using Loctite cleaner/primer/sealant.

**TABLE 2 - COOLER CLOSURE**

SIZE	VICTAULIC COUPLING PART NUMBER	PIPE CAP PART NUMBER
4"	023-15215-000	023-15222-000
6"	023-15216-000	023-15223-000
8"	023-15217-000	023-15224-000
10"	023-15218-000	023-15218-000
12"	023-15219-000	023-15219-000
14"	023-15220-000	023-15227-000
16"	023-15221-000	023-15228-000
18"	023-17129-000	023-17130-000
20"	023-18953-000	023-18945-000

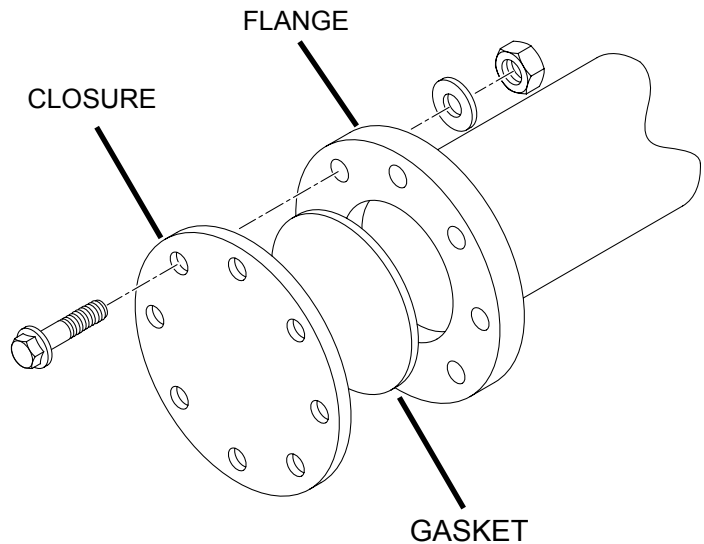


**FIG. 3 - COOLER CLOSURE**

**TABLE 3 - FLANGE CLOSURES**

150 lb. WATER FLANGE CLOSURES		
FLANGE SIZE	CLOSURE PART NUMBER	GASKET PART NUMBER
4"	075-46450-004	028-10385-010
6"	075-46450-006	028-10385-012
8"	075-46450-008	028-10385-013
10"	075-46450-010	028-10385-014
12"	075-46450-012	028-10385-015
14"	075-46450-014	028-10385-016
16"	075-46450-016	028-10385-017

300 lb. WATER FLANGE CLOSURES		
FLANGE SIZE	CLOSURE PART NUMBER	GASKET PART NUMBER
4"	075-46450-104	028-10385-010
6"	075-46450-106	028-10385-012
8"	075-46450-108	028-10385-013
10"	075-46450-110	028-10385-014
12"	075-46450-112	028-10385-015
14"	075-46450-114	028-10385-016
16"	075-46450-116	028-10385-017



**FIG. 4 - FLANGE CLOSURES (4 IN. SHOWN)**

NOTE: Not all Flange Closures use the same bolt pattern.  
Not all Flange Closures use the same qty. of hardware.



**A JOHNSON CONTROLS COMPANY**

P.O. Box 1592, York, Pennsylvania USA 17405-1592  
Copyright © by Johnson Controls 2006  
Form 50.20-NM4 (806)  
Supersedes: Nothing

Tele. 800-861-1001  
www.york.com

Subject to change without notice. Printed in USA  
ALL RIGHTS RESERVED