



# RecipPak PACKAGED LIQUID CHILLERS WATER COOLED AND CONDENSERLESS

**WIRING DIAGRAM**

Supersedes: 150.24-W27 (397)

Form 150.24-W27 (697)

## ELEMENTARY DIAGRAM CONNECTION DIAGRAM – CONTROL PANEL AND CONNECTION DIAGRAM – SYSTEM WIRING

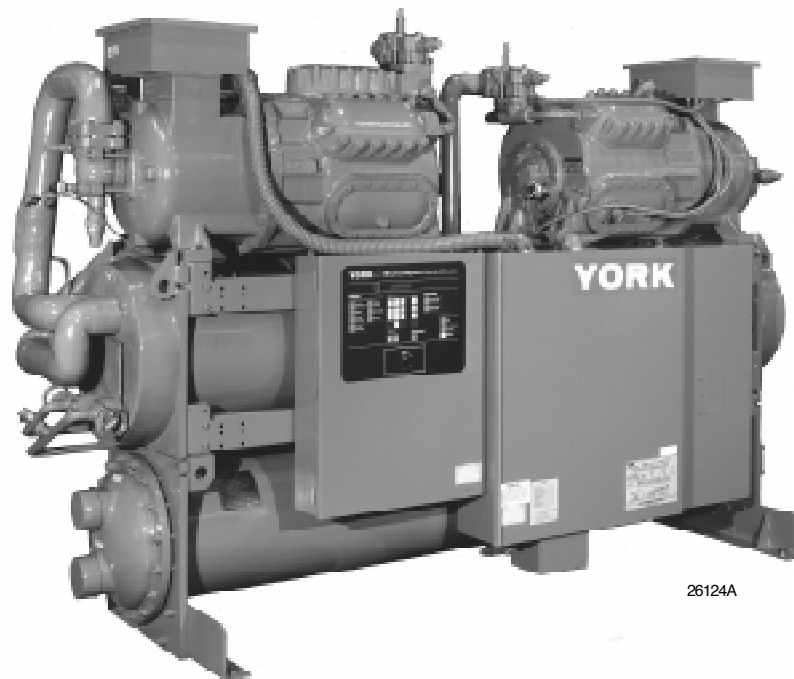
**FOR MODELS:**

**60 HZ**

YCWJ45EE0, YCRJ45E00,  
YCWJ55HE0, YCRJ55H00,  
YCWJ56HF0, YCRJ56H00,  
YCWJ66KH0, YCRJ66K00,  
YCWJ67KH0, YCRJ67K00,  
YCWJ77KH0, YCRJ77K00,  
YCWJ88MH0, YCRJ88M00,  
YCWJ99MJ0, YCRJ99M00  
SYTLE "A"

**50 HZ**

YCWJ56EE0, YCRJ56E00,  
YCWJ66HE0, YCRJ66H00,  
YCWJ67HF0, YCRJ67H00,  
YCWJ77KH0, YCRJ77K00,  
YCWJ78KH0, YCRJ78K00,  
YCWJ88KH0, YCRJ88K00,  
YCWJ99MH0, YCRJ99M00  
SYTLE "A"



26124A



200, 230, 460-3-60

## ELECTRICAL DATA

UNIT			SYSTEM #1							
CHILLER MODEL	VOLT CODE	VOLTAGE V-PH-HZ	MIN. <sup>1</sup> CIR. AMP.	DUAL ELEM. FUSE		NON-FUSED <sup>4</sup> DISC SW	INCOMING WIRE SIZE <sup>5</sup>	MAX. SIZE CKT BKR HACR TYPE <sup>5</sup>	RLA	PW/LRA
				MIN. <sup>2</sup>	MAX <sup>3</sup>					
YCWJ45EE0	-17	200-3-60	218	300	350	400	(2) #4-250MCM	350	174	731
YCWJ45EE0	-28	230-3-60	189	225	300	200	(2) #4-250MCM	300	151	636
YCWJ45EE0	-40	380-3-60	116	150	200	200	(2) #4-250MCM	200	92	385
YCWJ45EE0	-46	460-360	96	125	150	100	(2) #4-250MCM	150	76	318
YCWJ56EE0	-50	380/415-3-50	106	150	175	100	(2) #4-250MCM	175	84	367
YCWJ45EE0	-58	575-3-60	77	100	125	100	(2) #4-250MCM	125	61	254
YCWJ56EE0	-64	346-3-50	116	150	200	200	(2) #4-250MCM	200	92	400
YCWJ55HE0	-17	200-3-60	251	300	450	400	(2) #4-250MCM	450	200	731
YCWJ55HE0	-28	230-3-60	226	300	400	400	(2) #4-250MCM	400	180	636
YCWJ55HE0	-40	380-3-60	132	175	225	200	(2) #4-250MCM	225	105	385
YCWJ55HE0	-46	460-360	113	150	200	200	(2) #4-250MCM	200	90	318
YCWJ66HE0	-50	380/415-3-50	126	150	225	200	(2) #4-250MCM	225	100	410
YCWJ55HE0	-58	575-3-60	88	110	150	100	(2) #4-250MCM	150	70	254
YCWJ66HE0	-64	346-3-50	138	175	225	200	(2) #4-250MCM	225	110	412
YCWJ56HF0	-17	200-3-60	251	300	450	400	(2) #4-250MCM	450	200	731
YCWJ56HF0	-28	230-3-60	226	300	400	400	(2) #4-250MCM	400	180	636
YCWJ56HF0	-40	380-3-60	132	175	225	200	(2) #4-250MCM	225	105	385
YCWJ56HF0	-46	460-360	113	150	200	200	(2) #4-250MCM	200	90	318
YCWJ67HF0	-50	380/415-3-50	126	150	225	200	(2) #4-250MCM	225	100	410
YCWJ56HF0	-58	575-3-60	88	110	150	100	(2) #4-250MCM	150	70	254
YCWJ67HF0	-64	346-3-50	138	175	225	200	(2) #4-250MCM	225	110	412
YCWJ66KH0	-17	200-3-60	291	350	500	400	(2) #4-250MCM	500	232	865
YCWJ66KH0	-28	230-3-60	258	350	450	400	(2) #4-250MCM	450	206	752
YCWJ66KH0	-40	380-3-60	151	200	250	200	(2) #4-250MCM	250	120	412
YCWJ66KH0	-46	460-360	129	175	225	200	(2) #4-250MCM	225	103	376
YCWJ77KH0	-50	380/415-3-50	149	200	250	200	(2) #4-250MCM	250	119	482
YCWJ66KH0	-58	575-3-60	99	125	175	100	(2) #4-250MCM	175	79	300
YCWJ77KH0	-64	346-3-50	164	200	250	200	(2) #4-250MCM	250	131	572
YCWJ67KH0	-17	200-3-60	291	350	500	400	(2) #4-250MCM	500	232	865
YCWJ67KH0	-28	230-3-60	258	350	450	400	(2) #4-250MCM	450	206	752
YCWJ67KH0	-40	380-3-60	151	200	250	200	(2) #4-250MCM	250	120	412
YCWJ67KH0	-46	460-360	129	175	225	200	(2) #4-250MCM	225	103	376
YCWJ78KH0	-50	380/415-3-50	149	200	250	200	(2) #4-250MCM	250	119	482
YCWJ67KH0	-58	575-3-60	99	125	175	100	(2) #4-250MCM	175	79	300
YCWJ78KH0	-64	346-3-50	164	200	250	200	(2) #4-250MCM	250	131	572
YCWJ77KH0	-17	200-3-60	376	450	600	400	(2) 1/0-500MCM	600	300	1101
YCWJ77KH0	-28	230-3-60	331	400	500	400	(2) #4-250MCM	500	264	976
YCWJ77KH0	-40	380-3-60	198	250	350	200	(2) #4-250MCM	350	158	591
YCWJ77KH0	-46	460-360	166	200	250	200	(2) #4-250MCM	250	132	488
YCWJ88KH0	-50	380/415-3-50	186	225	300	200	(2) #4-250MCM	300	148	585
YCWJ77KH0	-58	575-3-60	132	175	225	200	(2) #4-250MCM	225	105	390
YCWJ88KH0	-64	346-3-50	203	250	350	200	(2) #4-250MCM	350	162	668
YCWJ88MH0	-17	200-3-60	469	600	800	600	(2) 1/0-500MCM	800	375	1101
YCWJ88MH0	-28	230-3-60	408	500	700	400	(2) #4-250MCM	700	326	976
YCWJ88MH0	-40	380-3-60	241	300	400	400	(2) #4-250MCM	400	192	591
YCWJ88MH0	-46	460-360	204	250	350	200	(2) #4-250MCM	350	163	488
YCWJ99MH0	-50	380/415-3-50	236	300	400	400	(2) #4-250MCM	400	188	760
YCWJ88MH0	-58	575-3-60	159	200	250	200	(2) #4-250MCM	250	127	390
YCWJ99MH0	-64	346-3-50	258	350	450	400	(2) #4-250MCM	450	206	917
YCWJ99MJ0	-40	380-3-60	296	400	500	400	(2) #4-250MCM	500	236	997
YCWJ88MJ0	-46	460-360	244	300	400	400	(2) #4-250MCM	400	195	830
YCWJ99MJ0	-58	575-3-60	196	250	350	200	(2) #4-250MCM	350	156	664

See Notes on page 3 and Power Wiring Schematics on page 5.

### CONTROL POWER SUPPLY

UNIT VOLTAGE	CONTROL POWER SUPPLY	MIN. CIRCUIT AMPACITY	MAX. DUAL ELEMENT FUSE SIZE	NON-FUSED DISC. SWITCH SIZE
Standard Models without Transformers	115-1-60	20A	20A, 250V	30A, 240A

SYSTEM #2							
MIN. <sup>1</sup> CIR. AMP.	DUAL ELEM. FUSE		NON- FUSED <sup>4</sup> DISC SW	INCOMING WIRE SIZE <sup>5</sup>	MAX. SIZE CKT BKR HACR TYPE <sup>5</sup>	RLA	PW/LRA
	MIN. <sup>2</sup>	MAX <sup>3</sup>					
251	300	450	400	(2) #4-250MCM	450	200	731
226	300	400	400	(2) #4-250MCM	400	180	636
132	175	225	200	(2) #4-250MCM	225	105	385
113	150	200	200	(2) #4-250MCM	200	90	318
126	150	225	200	(2) #4-250MCM	225	100	410
88	110	150	100	(2) #4-250MCM	150	70	254
138	175	225	200	(2) #4-250MCM	225	110	412
251	300	450	400	(2) #4-250MCM	450	200	731
226	300	400	400	(2) #4-250MCM	400	180	636
132	175	225	200	(2) #4-250MCM	225	105	385
113	150	200	200	(2) #4-250MCM	200	90	318
126	150	225	200	(2) #4-250MCM	225	100	410
88	110	150	100	(2) #4-250MCM	150	70	254
138	175	225	200	(2) #4-250MCM	225	110	412
291	350	500	400	(2) #4-250MCM	500	232	865
258	350	450	400	(2) #4-250MCM	450	206	752
151	200	250	200	(2) #4-250MCM	250	120	412
129	175	225	200	(2) #4-250MCM	225	103	376
149	200	250	200	(2) #4-250MCM	250	119	482
99	125	175	100	(2) #4-250MCM	175	79	300
164	200	250	200	(2) #4-250MCM	250	131	572
291	350	500	400	(2) #4-250MCM	500	232	865
258	350	450	400	(2) #4-250MCM	450	206	752
151	200	250	200	(2) #4-250MCM	250	120	412
129	175	225	200	(2) #4-250MCM	225	103	376
149	200	250	200	(2) #4-250MCM	250	119	482
99	125	175	100	(2) #4-250MCM	175	79	300
164	200	250	200	(2) #4-250MCM	250	131	572
376	450	600	400	(2) 1/0-500MCM	600	300	1101
331	400	500	400	(2) #4-250MCM	500	264	976
198	250	350	200	(2) #4-250MCM	350	158	591
166	200	250	200	(2) #4-250MCM	250	132	488
186	225	300	200	(2) #4-250MCM	300	148	585
132	175	225	200	(2) #4-250MCM	225	105	390
203	250	350	200	(2) #4-250MCM	350	162	668
376	450	600	400	(2) 1/0-500MCM	600	300	1101
331	400	500	400	(2) #4-250MCM	500	264	976
198	250	350	200	(2) #4-250MCM	350	158	591
166	200	250	200	(2) #4-250MCM	250	132	488
186	225	300	200	(2) #4-250MCM	300	148	585
132	175	225	200	(2) #4-250MCM	225	105	390
203	250	350	200	(2) #4-250MCM	350	162	668
469	600	800	600	(2) 1/0-500MCM	800	375	1101
408	500	700	400	(2) #4-250MCM	700	326	976
241	300	400	400	(2) #4-250MCM	400	192	951
204	250	350	200	(2) #4-250MCM	350	163	488
236	300	400	400	(2) #4-250MCM	400	188	760
159	200	250	200	(2) #4-250MCM	250	127	390
258	350	450	400	(2) #4-250MCM	450	206	917
296	400	500	400	(2) #4-250MCM	500	236	997
244	300	400	400	(2) #4-250MCM	400	195	830
196	250	350	200	(2) #4-250MCM	350	156	664

**NOTES:**

1. Minimum Circuit Ampacity (MCA) is based on 125% of the rated load amps for the largest motor plus 100% of the loaded amps for all other loads included in the circuit, per N.E.C. Article 430-24. If a Factory Mounted Control Transformer is provided, add the following to the system #1 MCA values in the YCA Tables: -17, add 10 amps; -28, add 9 amps; -46, add 4 amps; -58, add 3 amps.
2. Minimum fuse size is based on 150% of the largest motor RLA plus 100% of the remaining RLAs (U.L. Standard 1995, Section 36.2). It is not recommended in applications where brown-outs, frequent starting and stopping of the unit, and/or operation at ambient temperatures in excess of 95°F is anticipated.
3. Maximum dual element fuse is based on 225% maximum plus 100% of the rated load amps for all other loads included in the circuit, per N.E.C. 440-22.
4. The recommended disconnect switch is based on a minimum of 115% of the summation rated load amps of all the loads included in the circuit, per N.E.C. 440-12A1.
5. Minimum HACR is based on 225% maximum plus 100% of the rated load amps for all loads included in the circuit, per circuit, per U.L. 1995 Fig. 36.2.
6. The Incoming Wire Range is the minimum and maximum wire size that can be accommodated by unit wiring lugs. The (1), (2), (3) or (4) indicated the number of termination points which are available per phase. Actual wire size and number of wires per phase must be determined based on ampacity and job requirements using N.E.C. wire sizing information. The above recommendations are based on the National Electric Code and using copper connectors only. Field wiring must also comply with local codes.
7. A ground lug is provided for each compressor system to accommodate field grounding conductor per N.E.C. Article 250-54. A control circuit grounding lug is also supplied. Incoming ground wire range is #6 - #2/0 (50 - 90 Tons) or #6 - 350 MCM (95 - 220 Tons).

**LEGEND**

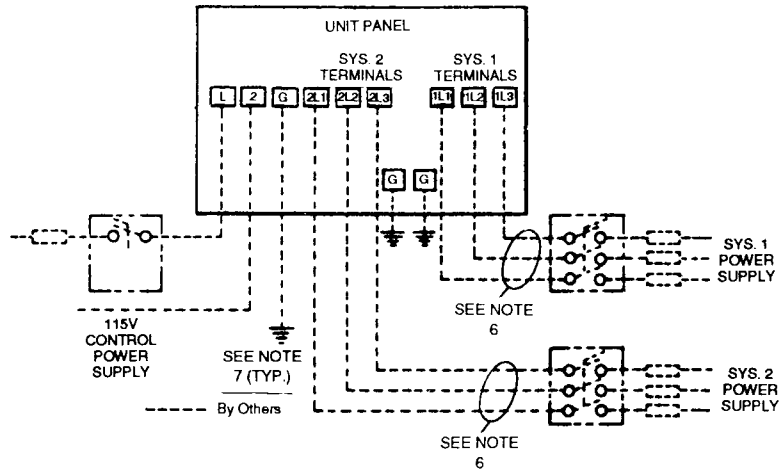
VOLT	= Voltage	RLA	= Running Load Amps
MCA	= Minimum Circuit Ampacity	FLA	= Full Load Amps
DISC	= Disconnect	ACL/LRA	= Across-the-Line Inrush Amps
ACL	= Across-the-Line	PW/LRA	= Part Wind Inrush Amps
PW	= Part Wind	CKT BKR	= Circuit Breaker
N/A	= Not Available	HACR	= Heating, Air Conditioning and Refrigeration

**SINGLE POINT POWER SUPPLY (OPTIONAL)**

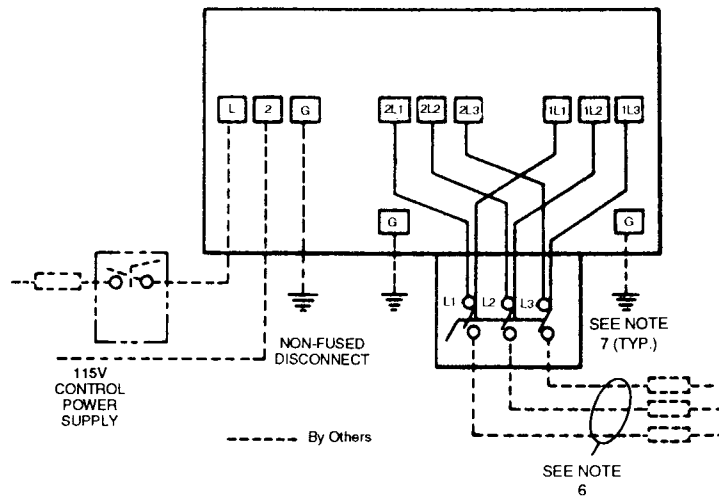
CHILLER MODEL	VOLT CODE	VOLTAGE V-PH-HZ	MIN. <sup>1</sup> CIR. AMP.	DUAL ELEM. FUSE		NON-FUSED <sup>4</sup> DISC SW	MAX. SIZE CKT BKR HACR TYPE <sup>5</sup>	INCOMING WIRE SIZE <sup>6</sup>	
				MIN. <sup>2</sup>	MAX <sup>3</sup>			SINGLE POINT	YORK SUPPL DISCONNECT
YCWJ45EE0	-17	200-3-60	425	500	500	600	500	(1-3) #6-350MCM	(1-2) 4/0-500MCM
YCWJ45EE0	-28	230-3-60	377	450	500	400	500	(1-3) #6-350MCM	(1) #1-600MCM OR (2) #1-250MCM
YCWJ45EE0	-40	380-3-60	224	250	300	400	300	(1) #6-350MCM	(1) #1-600MCM OR (2) #1-250MCM
YCWJ45EE0	-46	460-360	189	225	250	200	250	(1) #6-350MCM	(1) #6-350MCM
YCWJ56EE0	-50	380/415-3-50	210	250	250	400	250	(1) #6-350MCM	(1) #1-600MCM OR (2) #1-250MCM
YCWJ45EE0	-58	575-3-60	149	175	200	200	200	(1) #6-350MCM	(1) #6-350MCM
YCWJ56EE0	-64	346-3-50	230	300	300	400	300	(1) #6-350MCM	(1) #1-600MCM OR (2) #1-250MCM
YCWJ55HE0	-17	200-3-60	451	500	600	600	600	(1-3) #6-350MCM	(1-2) 4/0-500MCM
YCWJ55HE0	-28	230-3-60	406	450	500	600	500	(1-3) #6-350MCM	(1-2) 4/0-500MCM
YCWJ55HE0	-40	380-3-60	237	300	300	400	300	(1) #6-350MCM	(1) #1-600MCM OR (2) #1-250MCM
YCWJ55HE0	-46	460-360	203	225	250	400	250	(1) #6-350MCM	(1) #1-600MCM OR (2) #1-250MCM
YCWJ66HE0	-50	380/415-3-50	226	250	300	400	300	(1) #6-350MCM	(1) #1-600MCM OR (2) #1-250MCM
YCWJ55HE0	-58	575-3-60	158	175	225	200	225	(1) #6-350MCM	(1) #6-350MCM
YCWJ66HE0	-64	346-3-50	248	300	350	400	350	(1) #6-350MCM	(1) #1-600MCM OR (2) #1-250MCM
YCWJ56HF0	-17	200-3-60	491	600	600	600	600	(1-3) #6-350MCM	(1-2) 4/0-500MCM
YCWJ56HF0	-28	230-3-60	438	500	600	400	600	(1-3) #6-350MCM	(1-2) 4/0-500MCM
YCWJ56HF0	-40	380-3-60	256	300	350	400	350	(1) #6-350MCM	(1) #1-600MCM OR (2) #1-250MCM
YCWJ56HF0	-46	460-360	219	250	300	400	300	(1) #6-350MCM	(1) #1-600MCM OR (2) #1-250MCM
YCWJ67HF0	-50	380/415-3-50	249	300	300	400	300	(1) #6-350MCM	(1) #1-600MCM OR (2) #1-250MCM
YCWJ56HF0	-58	575-3-60	169	200	225	200	225	(1) #6-350MCM	(1) #6-350MCM
YCWJ67HF0	-64	346-3-50	274	350	350	400	350	(1) #6-350MCM	(1) #1-600MCM OR (2) #1-250MCM
YCWJ66KH0	-17	200-3-60	523	600	700	600	700	(1-3) #6-350MCM	(1-2) 4/0-500MCM
YCWJ66KH0	-28	230-3-60	464	600	600	600	600	(1-3) #6-350MCM	(1-2) 4/0-500MCM
YCWJ66KH0	-40	380-3-60	271	300	350	400	350	(1) #6-350MCM	(1) #1-600MCM OR (2) #1-250MCM
YCWJ66KH0	-46	460-360	232	300	300	400	300	(1) #6-350MCM	(1) #1-600MCM OR (2) #1-250MCM
YCWJ77KH0	-50	380/415-3-50	268	300	350	400	350	(1) #6-350MCM	(1) #1-600MCM OR (2) #1-250MCM
YCWJ66KH0	-58	575-3-60	178	200	250	200	250	(1) #6-350MCM	(1) #6-350MCM
YCWJ77KH0	-64	346-3-50	295	350	400	400	400	(1) #6-350MCM	(1) #1-600MCM OR (2) #1-250MCM
YCWJ67KH0	-17	200-3-60	608	700	800	800	800	(1-3) #6-350MCM	(1-4) 1/0-350MCM
YCWJ67KH0	-28	230-3-60	537	600	700	600	700	(1-3) #6-350MCM	(1-2) 4/0-500MCM
YCWJ67KH0	-40	380-3-60	318	400	400	400	400	(1-3) #6-350MCM	(1) #1-600MCM OR (2) #1-250MCM
YCWJ67KH0	-46	460-360	269	300	350	400	350	(1) #6-350MCM	(1) #1-600MCM OR (2) #1-250MCM
YCWJ78KH0	-50	380/415-3-50	305	350	400	400	400	(1-3) #6-350MCM	(1) #1-600MCM OR (2) #1-250MCM
YCWJ67KH0	-58	575-3-60	211	250	250	400	250	(1) #6-350MCM	(1) #1-600MCM OR (2) #1-250MCM
YCWJ78KH0	-64	346-3-50	334	400	450	400	450	(1-3) #6-350MCM	(1) #1-600MCM OR (2) #1-250MCM
YCWJ77KH0	-17	200-3-60	676	800	800	800	800	(1-3) #6-350MCM	(1-4) 1/0-350MCM
YCWJ77KH0	-28	230-3-60	595	700	800	800	800	(1-3) #6-350MCM	(1-4) 1/0-350MCM
YCWJ77KH0	-40	380-3-60	356	400	500	400	500	(1-3) #6-350MCM	(1) #1-600MCM OR (2) #1-250MCM
YCWJ77KH0	-46	460-360	298	350	400	400	400	(1) #6-350MCM	(1) #1-600MCM OR (2) #1-250MCM
YCWJ88KH0	-50	380/415-3-50	334	400	450	400	450	(1-3) #6-350MCM	(1) #1-600MCM OR (2) #1-250MCM
YCWJ77KH0	-58	575-3-60	237	300	300	400	300	(1) #6-350MCM	(1) #1-600MCM OR (2) #1-250MCM
YCWJ88KH0	-64	346-3-50	365	450	500	400	500	(1-3) #6-350MCM	(1) #1-600MCM OR (2) #1-250MCM
YCWJ88MH0	-17	200-3-60	844	1000	1200	1000	1200	(1-3) #6-350MCM	(1-4) 1/0-350MCM
YCWJ88MH0	-28	230-3-60	734	1000	1000	800	1000	(1-3) #6-350MCM	(1-4) 1/0-350MCM
YCWJ88MH0	-40	380-3-60	433	500	600	600	600	(1-3) #6-350MCM	(1-2) 4/0-500MCM
YCWJ88MH0	-46	460-3-60	367	450	500	400	500	(1-3) #6-350MCM	(1) #1-600MCM OR (2) #1-250MCM
YCWJ99MH0	-50	380/415-3-50	424	500	600	600	600	(1-3) #6-350MCM	(1-2) 4/0-500MCM
YCWJ88MH0	-58	575-3-60	286	350	400	400	400	(1) #6-350MCM	(1) #1-600MCM OR (2) #1-250MCM
YCWJ99MH0	-64	346-3-50	464	600	600	600	600	(1-3) #6-350MCM	(1-2) 4/0-500MCM
YCWJ99MJ0	-17	200-3-60	1009	1200	1200	1200	1200	(1-3) #6-350MCM	(1-4) 1/0-350MCM
YCWJ88MJ0	-28	230-3-60	878	1000	1200	1000	1200	(1-3) #6-350MCM	(1-4) 1/0-350MCM
YCWJ99MJ0	-40	380-3-60	532	600	700	600	700	(1-3) #6-350MCM	(1-2) 4/0-500MCM
YCWJ99MJ0	-46	460-3-60	439	500	600	600	600	(1-3) #6-350MCM	(1-2) 4/0-500MCM
YCWJ99MJ0	-58	575-3-60	352	400	500	400	500	(1-3) #6-350MCM	(1) #1-600MCM OR (2) #1-250MCM

See Notes on page 3 and Power Wiring Schematics on page 5.

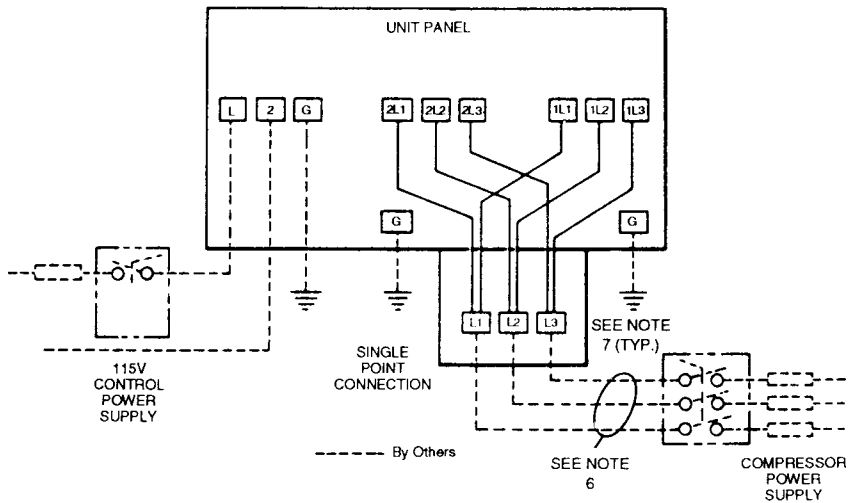
**POWER WIRING CONNECTIONS  
STANDARD UNIT YCWJ/YCRJ**



**NON-FUSED DISCONNECT OPTION**



**SINGLE POINT OPTION**



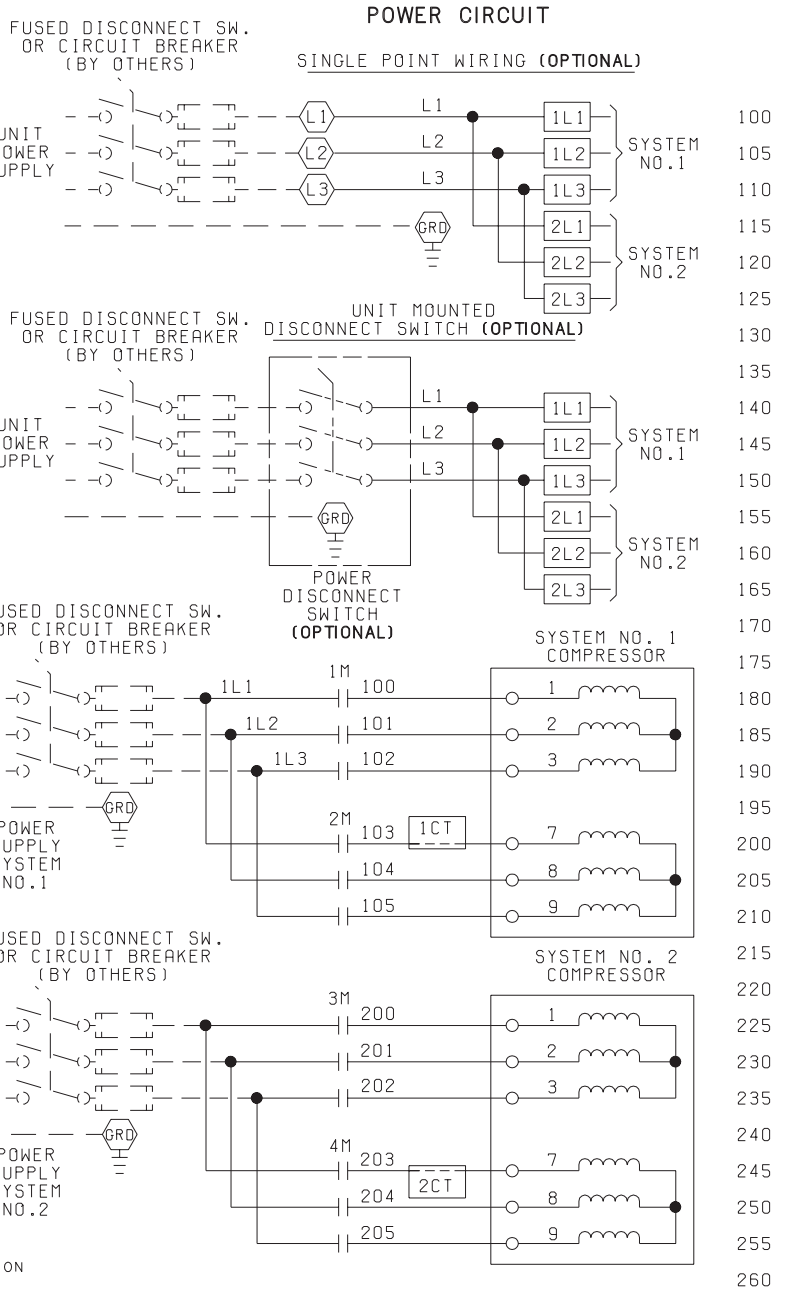
LD01365

# WIRING DIAGRAMS

## POWER CIRCUIT

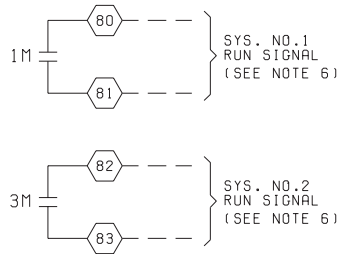
### LEGEND

1CT-2CT	CURRENT TRANSFORMERS
2FU,3FU	TRANSFORMER FUSE (OPTIONAL)
1FU	CONTROL FUSE 5A
1M-4M	COMPRESSOR CONTACTORS
J/P	RECEPTACLES/PLUGS
1T	CONTROL TRANSFORMER 1KVA (OPTIONAL)
2T	MICRO PANEL TRANSFORMER
TB1-TB3	TERMINAL BLOCKS
TS	TRANSIENT SUPPRESSORS
—	WIRING AND/OR COMPONENTS BY YORK
- - -	WIRING AND/OR COMPONENTS BY OTHERS
- - - -	OPTIONAL WIRING AND/OR COMPONENTS (PER ELEMENTARY DIAGRAM)
— — — —	OPTIONAL WIRING AND/OR COMPONENTS (PER PANEL INTERNAL CONNECTION DIAGRAM)
□	TERMINAL BLOCK FOR YORK CONNECTIONS ONLY
⬡	TERMINAL BLOCK FOR CUSTOMER CONNECTIONS
△	TERMINAL BLOCK FOR CUSTOMER LOW VOLTAGE (CLASS 2) CONNECTIONS. SEE NOTE 3.



**NOTES:**

1. FIELD WIRING TO BE IN ACCORDANCE WITH THE CURRENT EDITION OF THE NATIONAL ELECTRICAL CODE AS WELL AS ALL OTHER APPLICABLE CODES AND SPECIFICATIONS.
2. NUMBERS ALONG THE RIGHT SIDE OF A DIAGRAM ARE LINE IDENTIFICATION NUMBERS. THE NUMBERS AT EACH LINE INDICATE THE LINE NUMBER LOCATION OF RELAY CONTACTS. AN UNDERLINED CONTACT LOCATION SIGNIFIES A NORMALLY CLOSED CONTACT. NUMBERS ADJACENT TO CIRCUIT LINES ARE THE CIRCUIT IDENTIFICATION NUMBERS.
3. CONTACTS MUST BE SUITABLE FOR SWITCHING 24VDC, (GOLD CONTACTS RECOMMENDED). WIRING SHALL NOT BE RUN IN THE SAME CONDUIT WITH ANY LINE VOLTAGE WIRING.
4. TO CYCLE UNIT ON AND OFF AUTOMATICALLY WITH CONTACTS OTHER THAN THOSE SHOWN, INSTALL A CYCLING DEVICE IN SERIES WITH THE FLOW SWITCH (FLSW). SEE NOTE 3 FOR CONTACT RATING AND WIRING SPECIFICATIONS.
5. TO STOP UNIT (EMERGENCY STOP) WITH CONTACTS OTHER THAN THOSE SHOWN, INSTALL THE STOP CONTACT BETWEEN TERMINALS 5 AND 1. IF A STOP DEVICE IS NOT INSTALLED, A JUMPER MUST BE CONNECTED BETWEEN TERMINALS 5 AND 1. DEVICE MUST HAVE A MINIMUM CONTACT RATING OF 100VA AT 115VOLTS A.C.
6. CONTACTS ARE RATED AT 115V, 100VA, RESISTIVE LOAD ONLY, AND MUST BE SUPPRESSED AT LOAD BY USER.
7. SEE APPLICATION GUIDE WHEN OPTIONAL EQUIPMENT IS USED.
8. HIGH PRESSURE CUTOOUT (IHPCO & 2HPCO):  
 YCW UNITS (WITH CONDENSER) 270 PSIG OFF, RESET @ 210 PSIG.  
 YCR UNITS (WITH REMOTE CONDENSER) 405 PSIG OFF, RESET @ 330 PSIG.

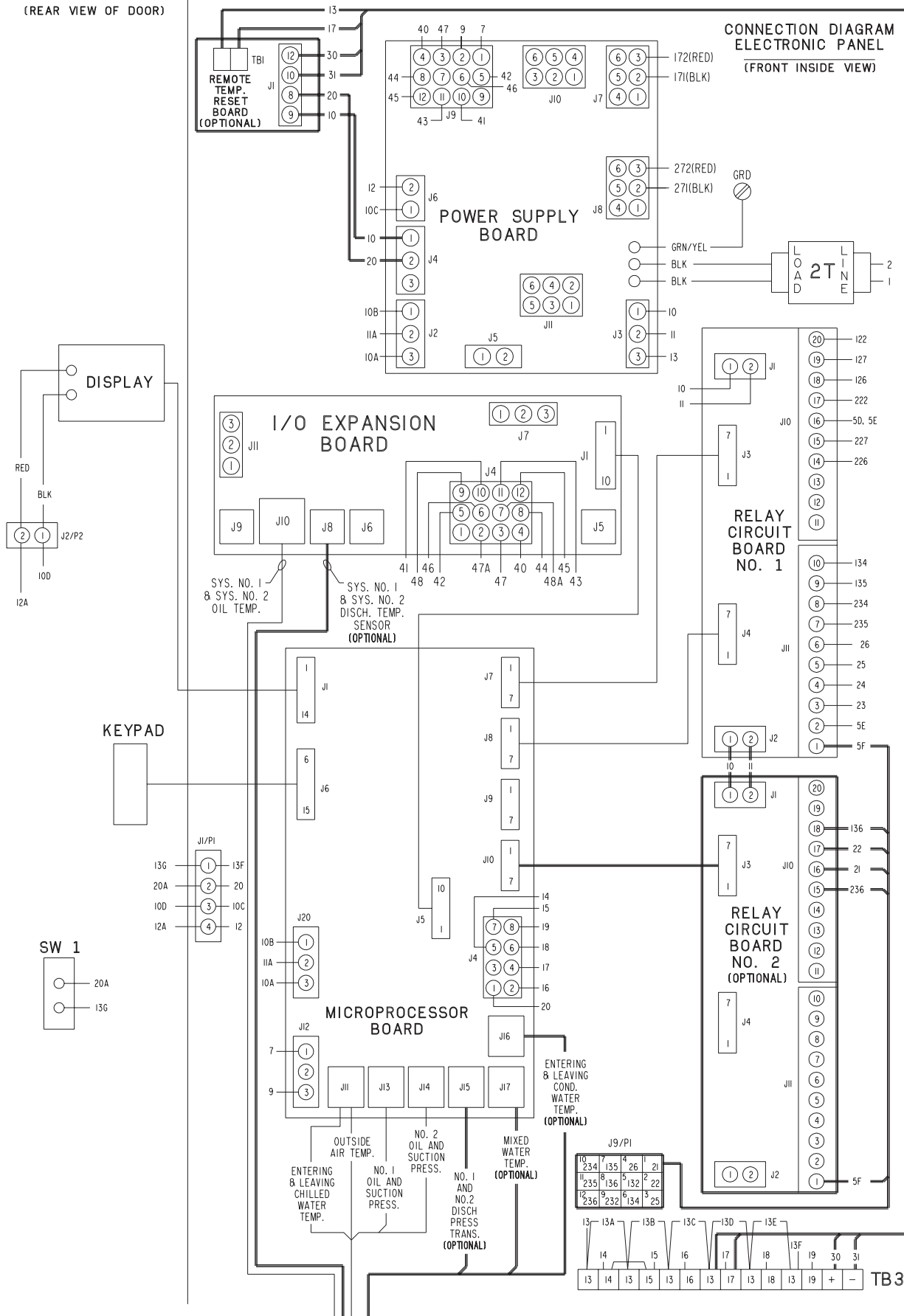




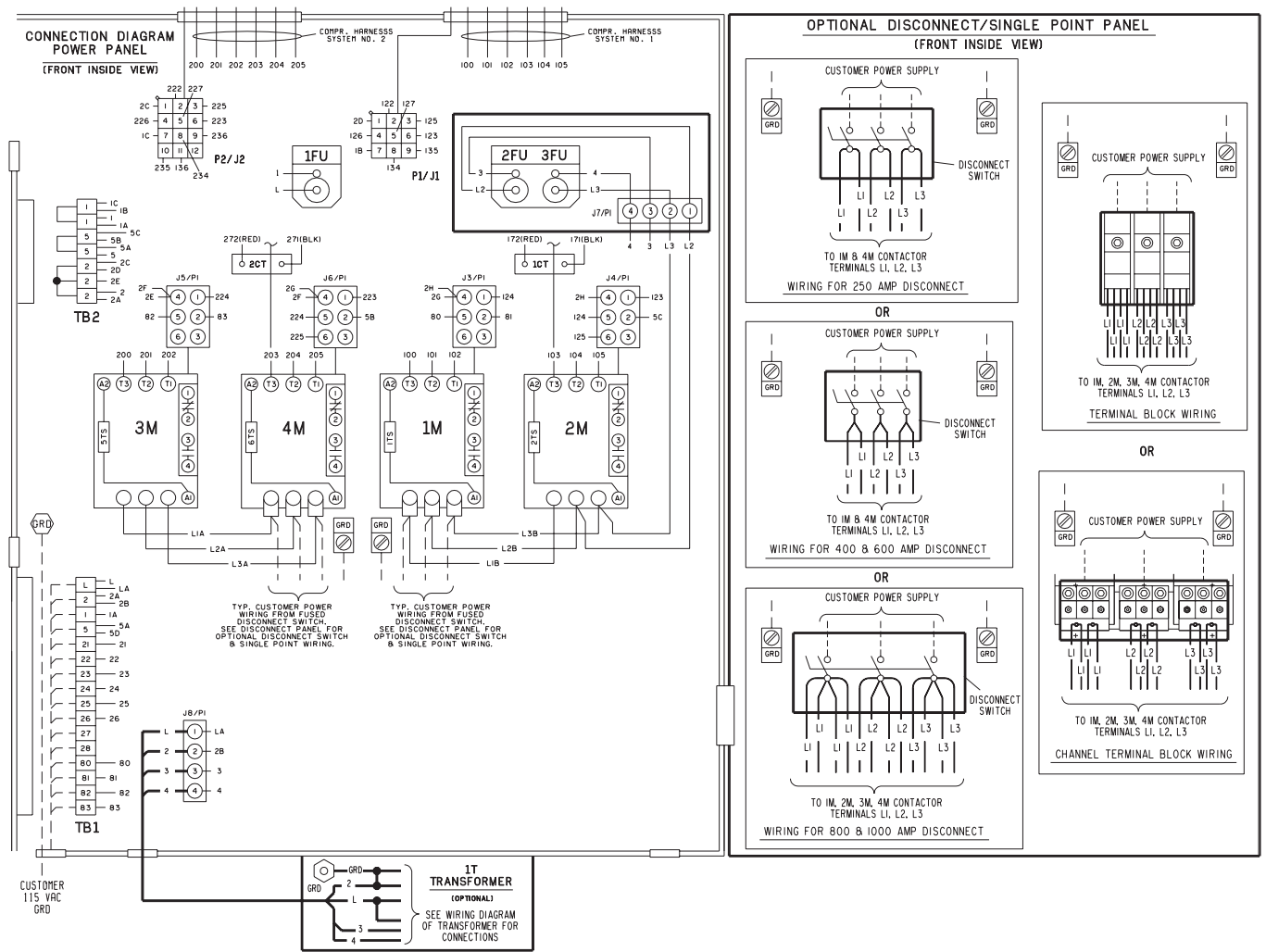
# CONNECTION DIAGRAM (PANEL)

(REAR VIEW OF DOOR)

CONNECTION DIAGRAM  
ELECTRONIC PANEL  
(FRONT INSIDE VIEW)

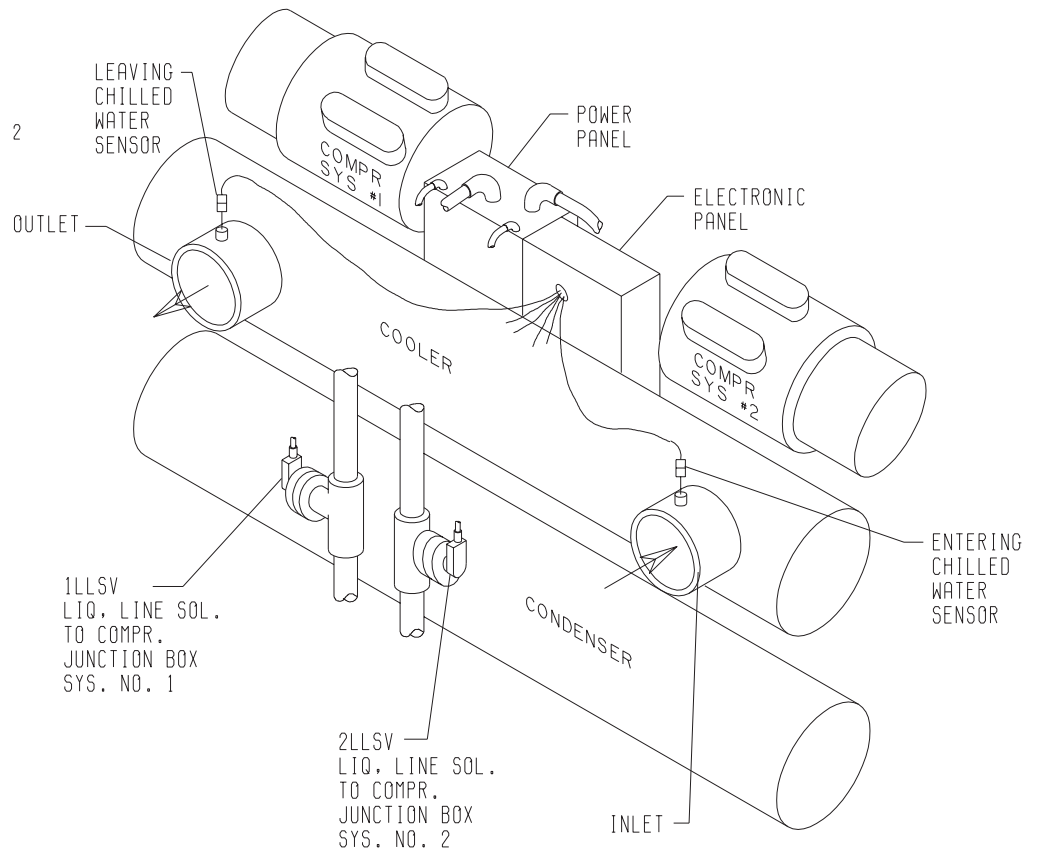
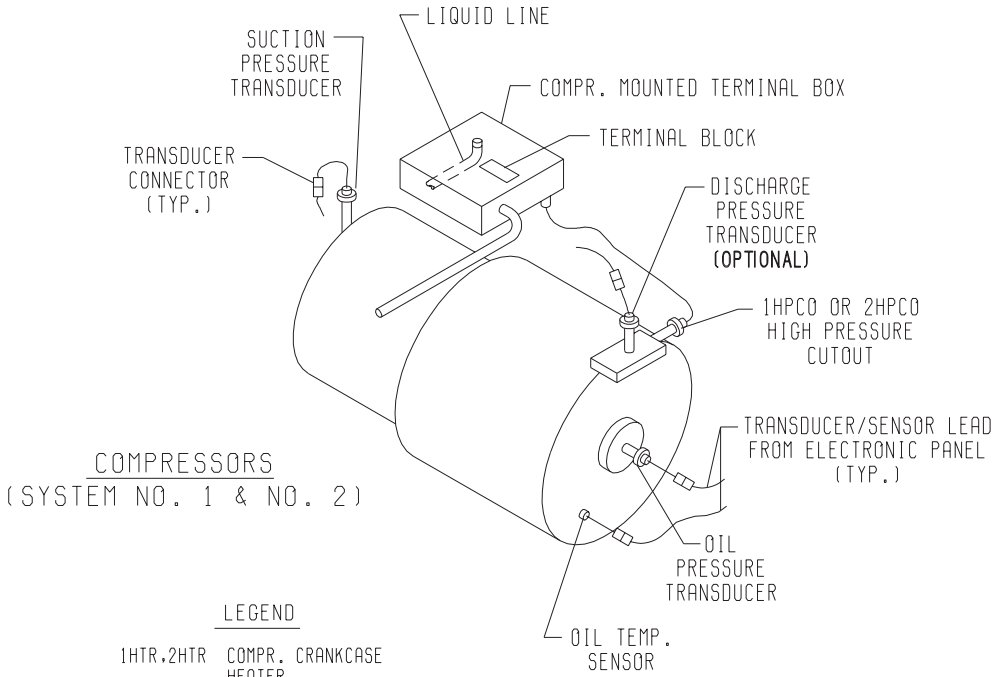


LD02107

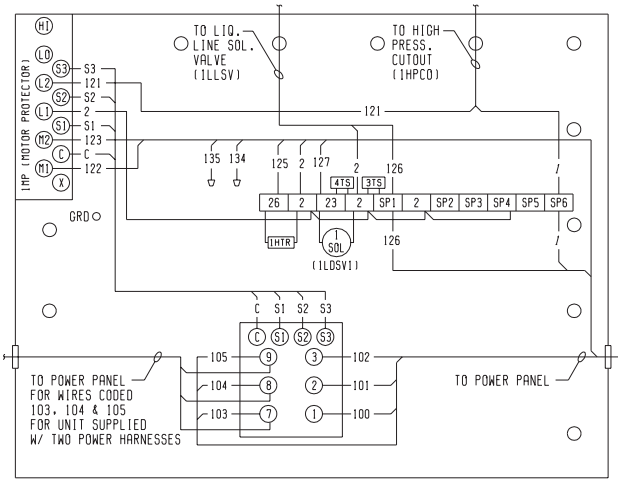


LD02108

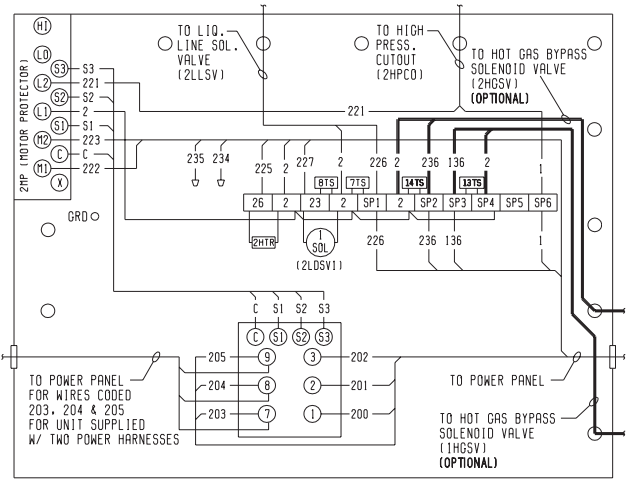
## CONNECTION DIAGRAM (SYSTEM WIRING)



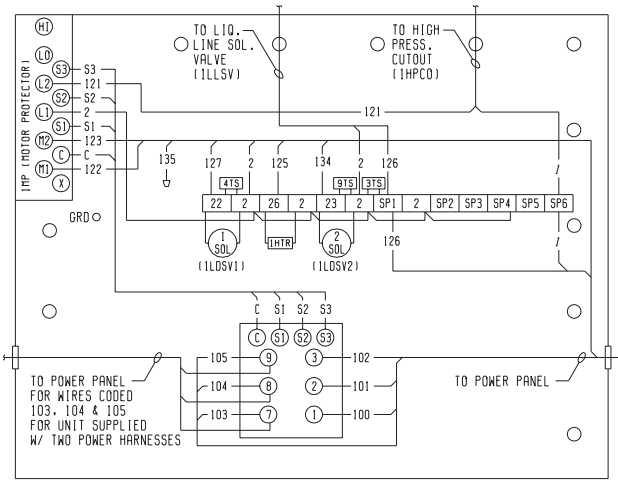
LD02109



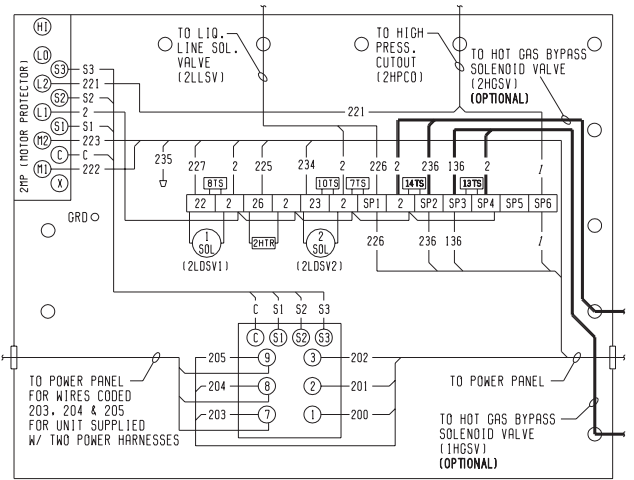
4 CYL. "J" COMPRESSOR TERMINAL BOX SYSTEM NO. 1  
(UNIT WITH STANDARD UNLOADING)



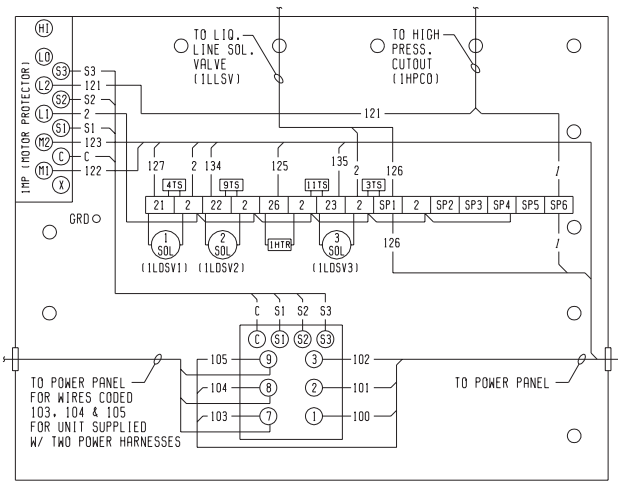
4 CYL. "J" COMPRESSOR TERMINAL BOX SYSTEM NO. 2  
(UNIT WITH STANDARD UNLOADING  
WITH OR WITHOUT OPTIONAL HOT GAS)



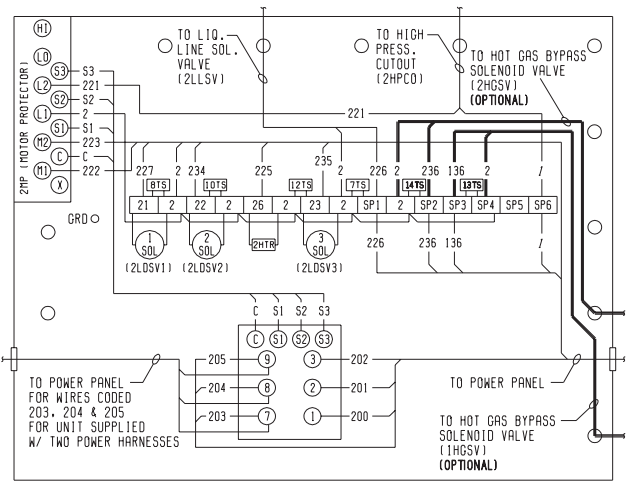
6 CYL. "J" COMPRESSOR TERMINAL BOX SYSTEM NO. 1  
(UNIT WITH STANDARD UNLOADING)



6 CYL. "J" COMPRESSOR TERMINAL BOX SYSTEM NO. 2  
(UNIT WITH STANDARD UNLOADING  
WITH OR WITHOUT OPTIONAL HOT GAS)



8 CYL. "J" COMPRESSOR TERMINAL BOX SYSTEM NO. 1  
(UNIT WITH STANDARD UNLOADING)



8 CYL. "J" COMPRESSOR TERMINAL BOX SYSTEM NO. 2  
(UNIT WITH STANDARD UNLOADING  
WITH OR WITHOUT OPTIONAL HOT GAS)



Proud Sponsor  
of the 1998  
U.S. Olympic Team

36USC380