

### MODELS

YCWK11, YCRK00, YCWM13, YCRM00, YCWU19, YCRU00, YCWQ15, YCRQ00,  
YCWS17, YCRS00, YCWL12, YCRL00, YCWN14, YCRN00, YCWV20, YCRV00,  
YCWR16, YCRR00, YCWT18, YCRT00

YCWJ45PR0, YCRJ45PO0, YCWJ56RS0, YCRJ56RO0, YCWJ67TT0, YCRJ67TO0,  
YCWJ77VU0, YCRJ77VO0, YCWJ88XV0, YCRJ88XO0, YCWJ56PR0, YCRJ56PO0,  
YCWJ67RS0, YCRJ67RO0, YCWJ78TT0, YCRJ78TO0, YCWJ88VU0, YCRJ88VO0,  
YCWJ99XV0 & YCRJ99XO0  
(50 AND 60 HERTZ) STYLE D

### GENERAL

A Sound Enclosure Kit is available for field installation on Reciprocating Packaged Liquid Chillers, models listed above. The kits enclose only the compressors; however, the end and center panels are readily removable for access to the service valves.

Although the individual components are not marked with an identity number, they can be easily identified by comparison with the assembly drawings, Figures 1 thru 4.

Refer to Table 1 to determine the proper Sound Enclosure Kit to be used with each chiller model number. Note that the motor frequency (Hz) is also a controlling variable in several cases.

### INSTALLATION

There are slight differences in the four available Sound Enclosure Kits so it is important to follow the proper instruction for the Kit selected. It is also important to check the chiller model number to be certain the proper Kit was ordered and received. See Table 1 for correlation.

To install a Sound Enclosure follow the proper kit Number, Parts List and Figure Number shown under A, B, C or D below.

**TABLE 1**

CHILLER MODEL		FREQUENCY HERTZ*	KIT NUMBER	INSTRUCTION
DOMESTIC	INTERNATIONAL			
YCWJ45PR0 YCWK11	YCWJ56PR0 YCWL12	50/60	366-91990	A (Pages 2, 3)
YCRJ45PO0 YCRK00	YCRJ56PO0 YCRL00	50/60	366-91990	A (Pages 2, 3)
YCWJ56RS0 YCWM13	YCWJ67RS0 YCWN14	50/60	366-91990	A (Pages 2, 3)
YCRJ56RO0 YCRM00	YCRJ67RO0 YCRN00	50/60	366-91990	A (Pages 2, 3)
YCWJ67TT0 YCWU19	YCWJ78TT0 YCWV20	50	366-94948	B (Pages 4, 5)
YCRJ67TO0 YCRU00	YCRJ78TO0 YCRV00	50	366-94948	B (Pages 4, 5)
YCWJ67TT0 YCWU19	YCWJ78TT0 YCWV20	60	366-91990	A (Pages 2, 3)
YCRJ67TO0 YCRU00	YCRJ78TO0 YCRV00	60	366-91990	A (Pages 2, 3)
YCWJ77VU0 YCWQ15	YCWJ88VU0 YCWR16	50/60	366-94171	C (Pages 6, 7)
YCRJ77VO0 YCRQ00	YCRJ88VO0 YCRR00	50/60	366-94171	C (Pages 6, 7)
YCWJ88XV0 YCWS17	YCWJ99XV0 YCWT18	50/60	366-94172	D (Pages 8, 9)
YCRJ88XO0 YCRS00	YCRJ99XO0 YCRT00	50/60	366-94172	D (Pages 8, 9)

\* Frequency (Hertz) can be determined from the voltage code in the model number.  
See "Unit Identification" in Installation, Operation & Maintenance manual.

**INSTRUCTION "A"**  
KIT NO. 366-91990 - Refer to Figure 1

**PARTS LIST**

Item No.	Quantity	Description
1	2	Channel, Side 122" Lg.
2	2	Channel, End
3	3	Bracket, Mounting
4	2	Frame, End
5	1	Angle, Formed 36" Lg.
6	2	Panel L.H. Front & R.H. Back
7	2	Panel R.H. Front & L.H. Back
8	2	Panel, End
9	2	Panel, Top
10	2	Panel, Center
11	6	Screw, Cap 3/8 - 16 x 1-1/4
12	6	Nut, Hex 3/8 - 16
13	6	Lockwasher 3/8
14	6	Plain Washer 3/8
15	80	Screw, Rd. Hd. Rec. 1/4 - 20 x 3/4
16	26	Nut, Hex 1/4 - 20
17	26	Lockwasher 1/4
18	8	Plain Washer 1/4
19	56	Screw, Tap Thd. Cut #10 x 3/4
20	52	Nut, Cage 1/4 - 20
21	6 Ft.	Gasket, Strip 1/8 x 5/8
22	1	Bracket, Mounting

**PROCEDURE**

- Remove upper 3/8" cap screws from top control panel mounting channel. Install four brackets (Item Nos. 3 & 22) using two existing 3/8" cap screws, nuts and lockwashers on the control panel side, and six additional 3/8" cap screws, nuts, plain washers and lockwashers (Item Nos. 11, 12, 13 & 14).
- Mount 122" long side channels (Item No. 1) to brackets using 1/4" x 3/4" round head recessed screws, nuts, lockwashers and plain washers (Item Nos. 15, 16, 17 & 18). Locate screw heads to outside.
- Place gasket (Item No. 21) between side channel and control panel.
- Assemble end channels (Item No. 2) with flanged ends to inside of side channels using 1/4" screws, nuts and lockwashers (Item Nos. 15, 16 & 17). Locate screw heads to outside.
- Assemble angle (Item No. 5) to top of side channels using 1/4" screws, nuts and lockwashers (Item Nos. 15, 16 & 17).
- Assemble U-shaped end frames (Item No. 4) to top of side channels with 1/4" screws, nuts and lockwashers (Item Nos. 15, 16 & 17). The cross member should be at the top.
- Assemble 1/4" retaining nuts (Item No. 20) in all 3/8" square holes.
- Assemble two end panels (Item No. 8) and four front and back panels (Item Nos. 6 & 7) with insulation toward the inside. Use 1/4" screws (Item No. 15) for end panels. Front and back panels require both 1/4" and #10 screws (Item Nos. 15 & 19).
- Assemble two top panels by first fastening together at center with 1/4" screws, nuts and lockwashers (Item Nos. 15, 16 & 17). Attach top panels to end and side panels with 1/4" and #10 screws (Item Nos. 15 & 19).
- Finally, assemble two center panels (Item No. 10) with the top edge under the top panel flange. Use 1/4" screws (Item No. 15).

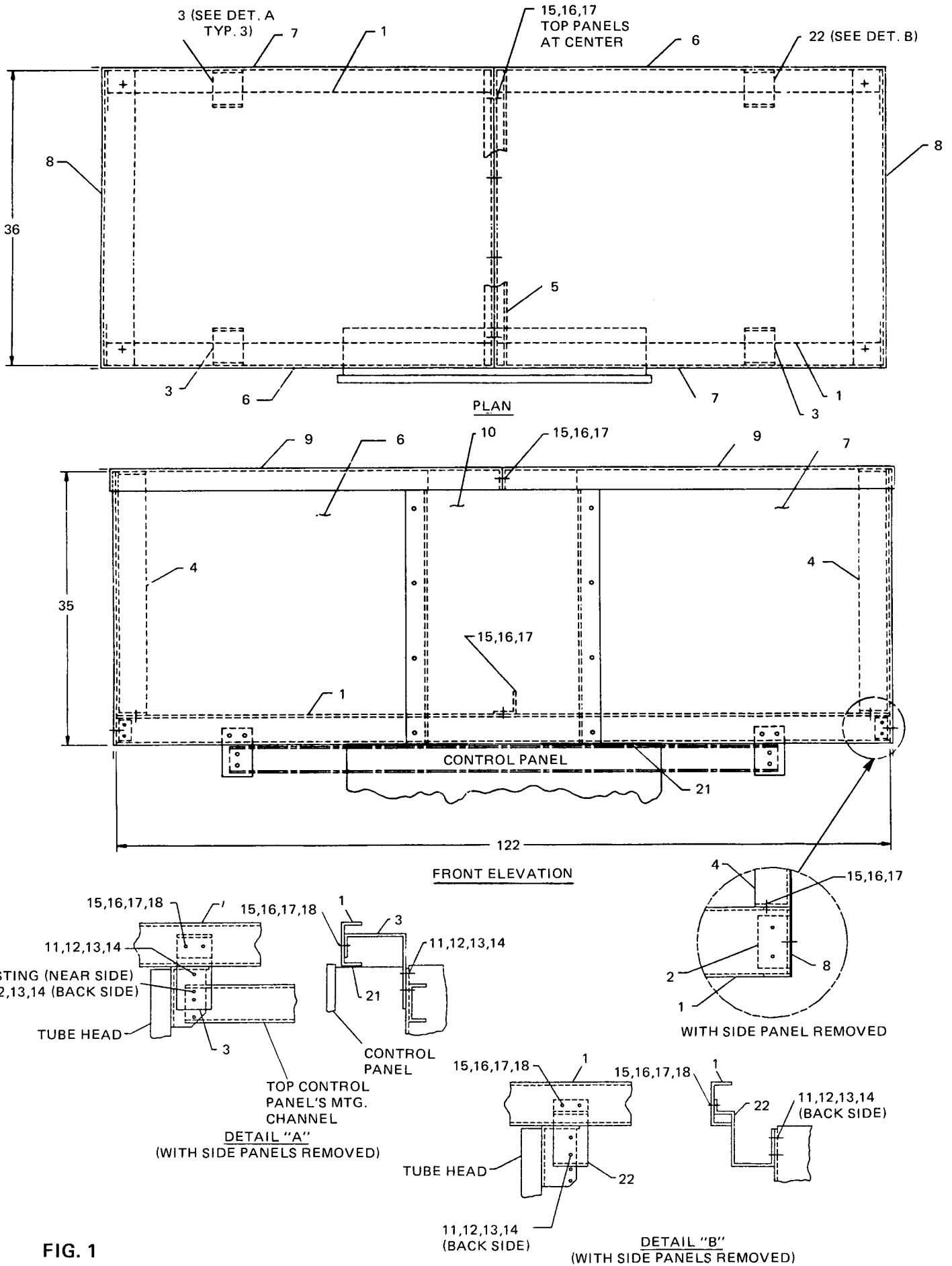


FIG. 1

## INSTRUCTION "B"

KIT NO. 366-94948 - Refer to Figure 2

### PARTS LIST

Item No.	Quantity	Description
1	2	Channel, Side 122" Lg.
2	2	Channel, End
3	3	Bracket, Mounting
4	2	Frame, End
5	1	Angle, Formed 36" Lg.
6	2	Panel L.H. Front & R.H. Back
7	2	Panel R.H. Front & L.H. Back
8	2	Panel, End
9	2	Panel, Top
10	2	Panel, Center
11	6	Screw, Cap 3/8 - 16 x 1-1/4
12	6	Nut, Hex 3/8 - 16
13	6	Lockwasher 3/8
14	6	Plain Washer 3/8
15	80	Screw, Rd. Hd. Rec. 1/4 - 20 x 3/4
16	26	Nut, Hex 1/4 - 20
17	26	Lockwasher 1/4
18	8	Plain Washer 1/4
19	56	Screw, Tap Thd. Cut #10 x 3/4
20	52	Nut, Cage 1/4 - 20
21	1	Bracket, Mounting

### PROCEDURE

1. Remove upper 3/8" cap screws from top control panel mounting channel. Install four brackets (Item Nos. 3 & 21) using two existing 3/8" cap screws, nuts and lockwashers on the control panel side, and six additional 3/8" cap screws, nuts, plain washers and lockwashers (Item Nos. 11, 12, 13 & 14).
2. Mount 122" long side channels (Item No. 1) to brackets using 1/4" x 3/4" round head recessed screws, nuts, lock washers and plain washers (Item Nos. 15, 16, 17 & 18). Locate screw heads to outside.
3. Assemble end channels (Item No. 2) with flanged ends to inside of side channels using screws, nuts and lockwashers (Item Nos. 15, 16 & 17). Locate screw heads to outside.
4. Assemble angle (Item No. 5) to top of side channels using 1/4" screws, nuts and lockwashers (Item Nos. 15, 16 & 17).
5. Assemble U-shaped end frames (Item No. 4) to top of side channels with 1/4" screws, nuts and lockwashers (Item Nos. 15, 16 & 17). The cross member should be at the top.
6. Assemble 1/4" retaining nuts (Item No. 20) in all 3/8" square holes.
7. Assemble two end panels (Item No. 8) and four front and back panels (Item Nos. 6 & 7) with insulation toward the inside. Use 1/4" screws (Item No. 15) for end panels. Front and back panels require both 1/4" and #10 screws (Item Nos. 15 & 19).
8. Assemble two top panels by first fastening together at center with 1/4" screws, nuts and lockwashers (Item Nos. 15, 16 & 17). Attach top panels to end and side panels with 1/4" and #10 screws (Item Nos. 15 & 19).
9. Finally, assemble two center panels (Item No. 10) with the top edge under the top panel flange. Use 1/4" screws (Item No. 15).

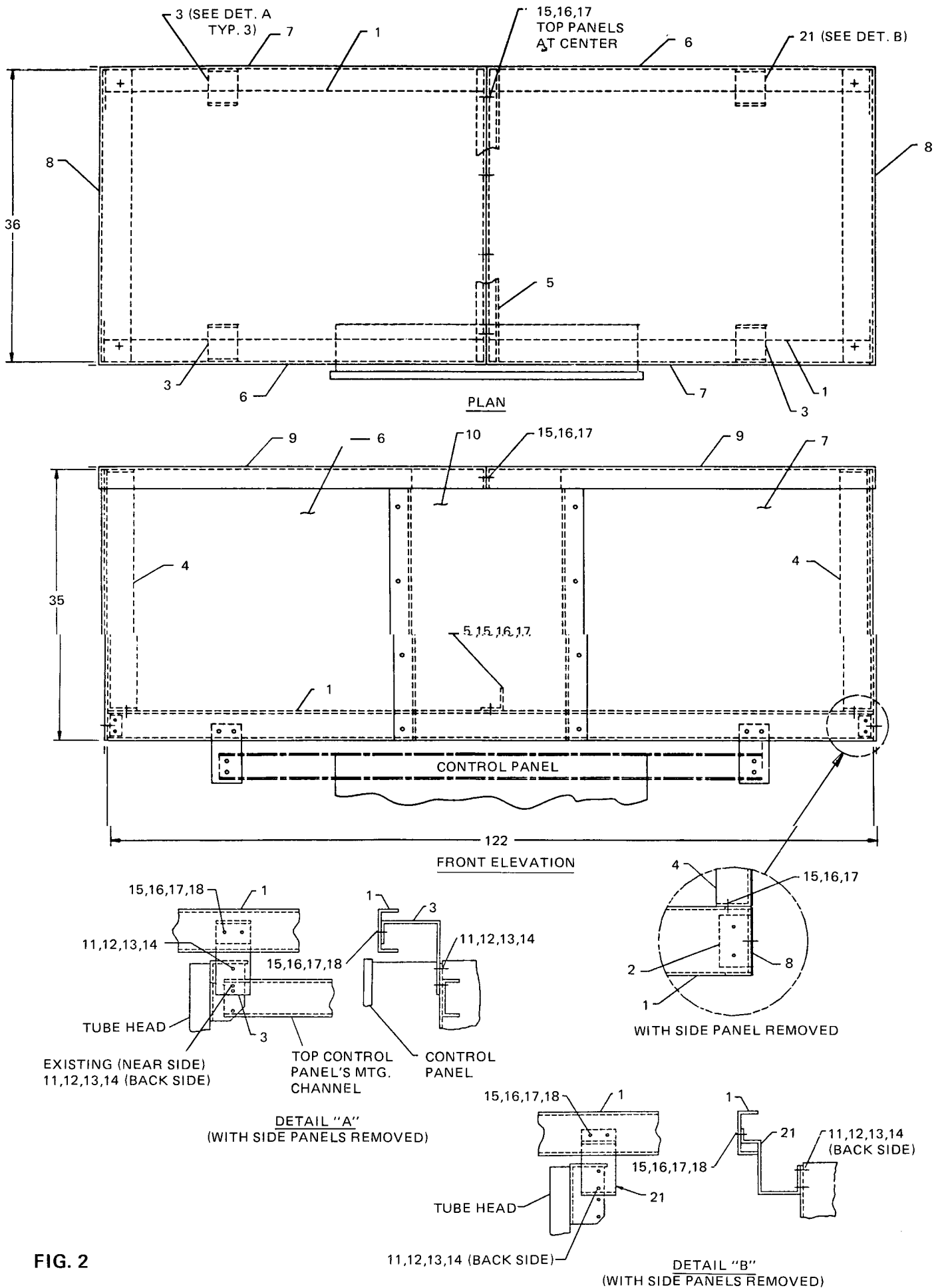


FIG. 2

## INSTRUCTION "C"

KIT NO. 366-94171 - Refer to Figure 3

### PARTS LIST

Item No.	Quantity	Description
1	4	Channel, Side 70" Lg.
2	2	Channel, Tie
3	2	Channel, End
4	2	Bracket, Mounting
5	1	Bracket, Mounting
6	1	Bracket, Mounting
7	2	Frame, End
8	1	Angle, Formed 39-7/8 Lg.
9	2	Panel, L.H. Front & R.H. Back
10	2	Panel, R.H. Front & L.H. Back
11	2	Panel, End
12	2	Panel, Center
13	2	Panel, Top
14	6	Screw, Cap 3/8 - 16 x 1-1/4
15	6	Nut, Hex 3/8 - 16
16	6	Lockwasher, 3/8
17	6	Plain Washer, 3/8
18	90	Screw, Rd. Hd. Rec. 1/4 - 20 x 3/4
19	-	-
20	34	Nut, Hex 1/4 - 20
21	34	Lockwasher, 1/4
22	8	Plain Washer, 1/4
23	56	Screw, Tap Thd. Cut #10 x 3/4
24	56	Nut, Cage 1/4 - 20
25	4 Ft.	Gasket, Strip 1/8 x 5/8

### PROCEDURE

1. Assemble two side channels each consisting of two Item No. 1 and one Item No. 2 using four 1/4" screws, nuts and lockwashers (Item Nos. 18, 20 & 21). Locate screw heads to outside.
2. Remove upper 3/8" cap screws from top control panel mounting channel. Assemble four brackets (Item Nos. 4, 5 & 6) using two existing 3/8" cap screws, nuts and lockwashers on the control panel side and six additional 3/8" cap screws, nuts, plain washers and lockwashers (Item Nos. 14, 15, 16 & 17).
3. Mount 140" long side channel assemblies to brackets using 1/4" x 3/4" round head recessed screws, nuts, lockwashers and plain washers (Item Nos. 18, 20, 21 & 22). Locate screw heads to outside.
4. Place gasket (Item No. 25) between side channel and control panel.
5. Assemble end channels (Item No. 3) with flanged ends to inside of side channels. Secure with 1/4" screws, nuts and lockwashers (Item Nos. 18, 20 & 21). Locate screw heads to outside.
6. Assemble angle (Item No. 8) to top of side channels using 1/4" screws, nuts and lockwashers (Item Nos. 18, 20 & 21).
7. Assemble U-shaped end frames (Item No. 7) to top of side channels with 1/4" screws, nuts and lockwashers (Item Nos. 18, 20 & 21). The cross member should be at the top.
8. Assemble 1/4" retaining nuts (Item No. 24) in all 3/8" square holes.
9. Assemble two end panels (Item No. 9) and four front and back panels (Item Nos. 9 & 10) with insulation toward the inside. Use 1/4" screws (Item No. 18) for end panels. Front and back panels require both 1/4" and #10 screws (Item Nos. 18 & 23).
10. Assemble two top panels by first fastening together at center with 1/4" screws, nuts and lockwashers (Item Nos. 18, 20 & 21). Attach top panels to end and side panels with 1/4" and #10 screws (Item Nos. 18 & 23).
11. Finally, assemble the two center panels (Item No. 12) with the top edge under the top panel flange. Use 1/4" screws (Item No. 18).

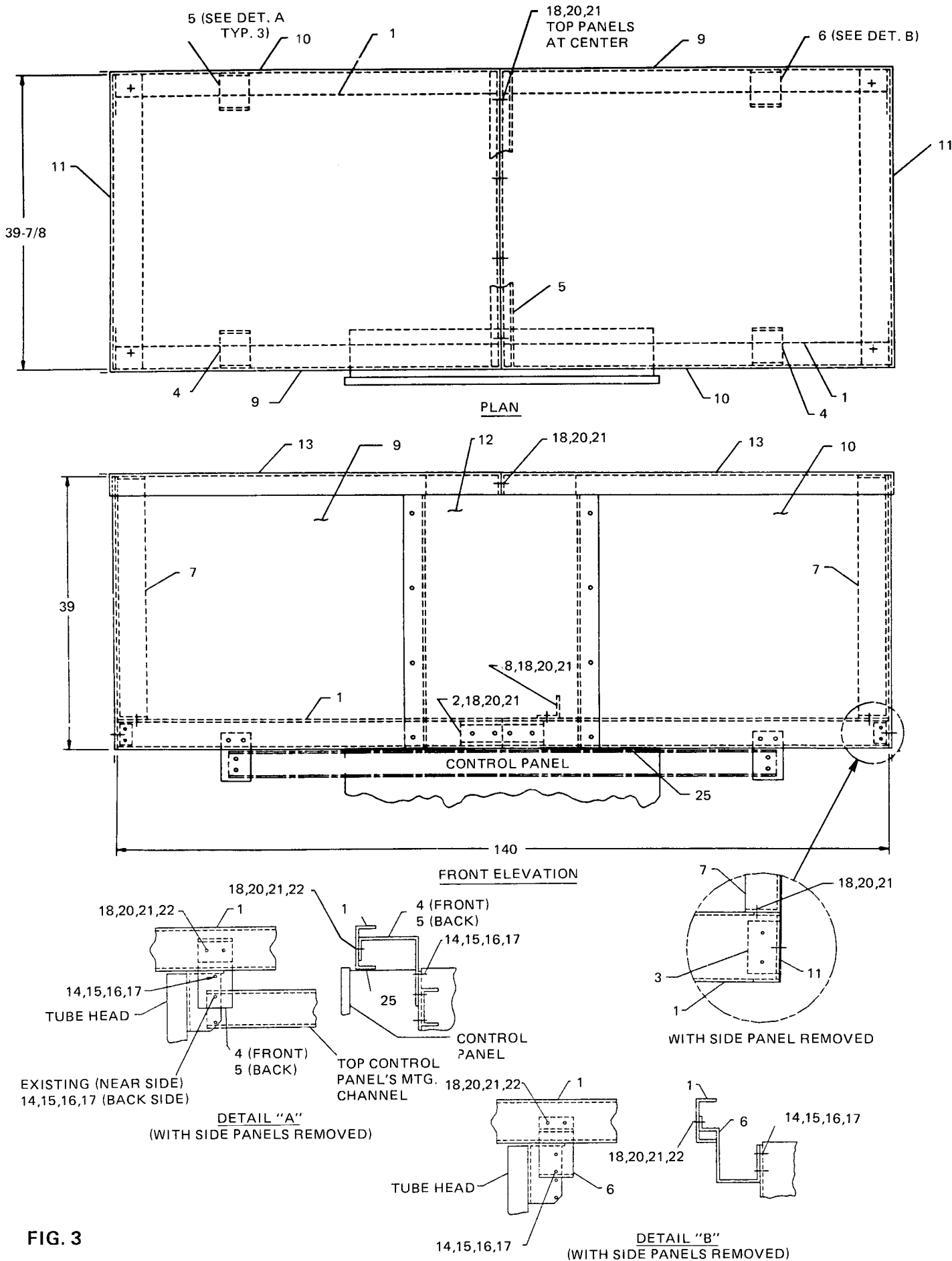


FIG. 3

## INSTRUCTION "D"

KIT NO. 366-94172 - Refer to Figure 4

### PARTS LIST

Item No.	Quantity	Description
1	4	Channel, Side 64" Lg.
2	2	Channel, End
3	3	Bracket, Mounting
4	1	Bracket, Mounting
5	2	Frame, End
6	1	Angle, Formed, 36" Lg.
7	2	Panel, L.H. Front & R.H. Back
8	2	Panel, R.H. Front & L.H. Back
9	2	Panel, End
10	2	Panel, Center
11	2	Panel, Top
12	6	Screw, Cap 3/8 - 16 x 1-1/4
13	6	Nut, Hex 3/8 - 16
14	6	Lockwasher, 3/8
15	6	Plain Washer, 3/8
16	88	Screw, Rd. Hd. Rec. 1/4 - 20 x 3/4
17	34	Nut, Hex 1/4 - 20
18	34	Lockwasher, 1/4
19	8	Plain Washer, 1/4
20	56	Screw, Tap Thd. Cut #10 x 3/4
21	52	Nut, Cage 1/4 - 20
22	4 Ft.	Gasket, Strip 1/8 x 5/8
23	2	Channel, Tie

### PROCEDURE

1. Assemble two side channels each consisting of two Item No. 1 and one Item No. 23 using four 1/4" screws, nuts and lockwashers (Item Nos. 16, 17 & 18). Locate screw heads to outside.
2. Remove upper 3/8" cap screws from top control panel mounting channel. Assemble four brackets (Item Nos. 3 & 4) using two existing 3/8" cap screws, nuts and lockwashers on the control panel side and six additional 3/8" cap screws, nuts, plain washers and lockwashers (Item Nos. 12, 13, 14 & 15).
3. Mount 128" long side channel assemblies to brackets using 1/4" x 3/4" round head recessed screws, nuts, lockwashers and plain washers (Item Nos. 16, 17, 18 & 19). Locate screw heads to outside.
4. Place gasket (Item No. 22) between side channel and control panel.
5. Assemble end channels (Item No. 2) with flanged ends to inside of side channels. Secure with 1/4" screws, nuts and lockwashers (Item Nos. 16, 17 & 18). Locate screw heads to outside.
6. Assemble angle (Item No. 6) to top of side channels using 1/4" screws, nuts and lockwashers (Item Nos. 16, 17 & 18).
7. Assemble U-shaped end frames (Item No. 5) to top of side channels with 1/4" screws, nuts and lockwashers (Item Nos. 16, 17 & 18). The cross member should be at the top.
8. Assemble 1/4" retaining nuts (Item No. 21) in all 3/8" square holes.
9. Assemble two end panels (Item No. 9) and four front and back panels (Item Nos. 7 & 8) with insulation toward the inside. Use 1/4" screws (Item No. 16) for end panels. Front and back panels require both 1/4" and #10 screws (Item Nos. 16 & 20).
10. Assemble two top panels by first fastening together at center with 1/4" screws, nuts and lockwashers (Item Nos. 16, 17 & 18). Attach top panels to end and side panels with 1/4" and #10 screws (Item Nos. 16 & 20).
11. Finally, assemble the two center panels (Item No. 10) with the top edge under the top panel flange. Use 1/4" screws (Item No. 16).

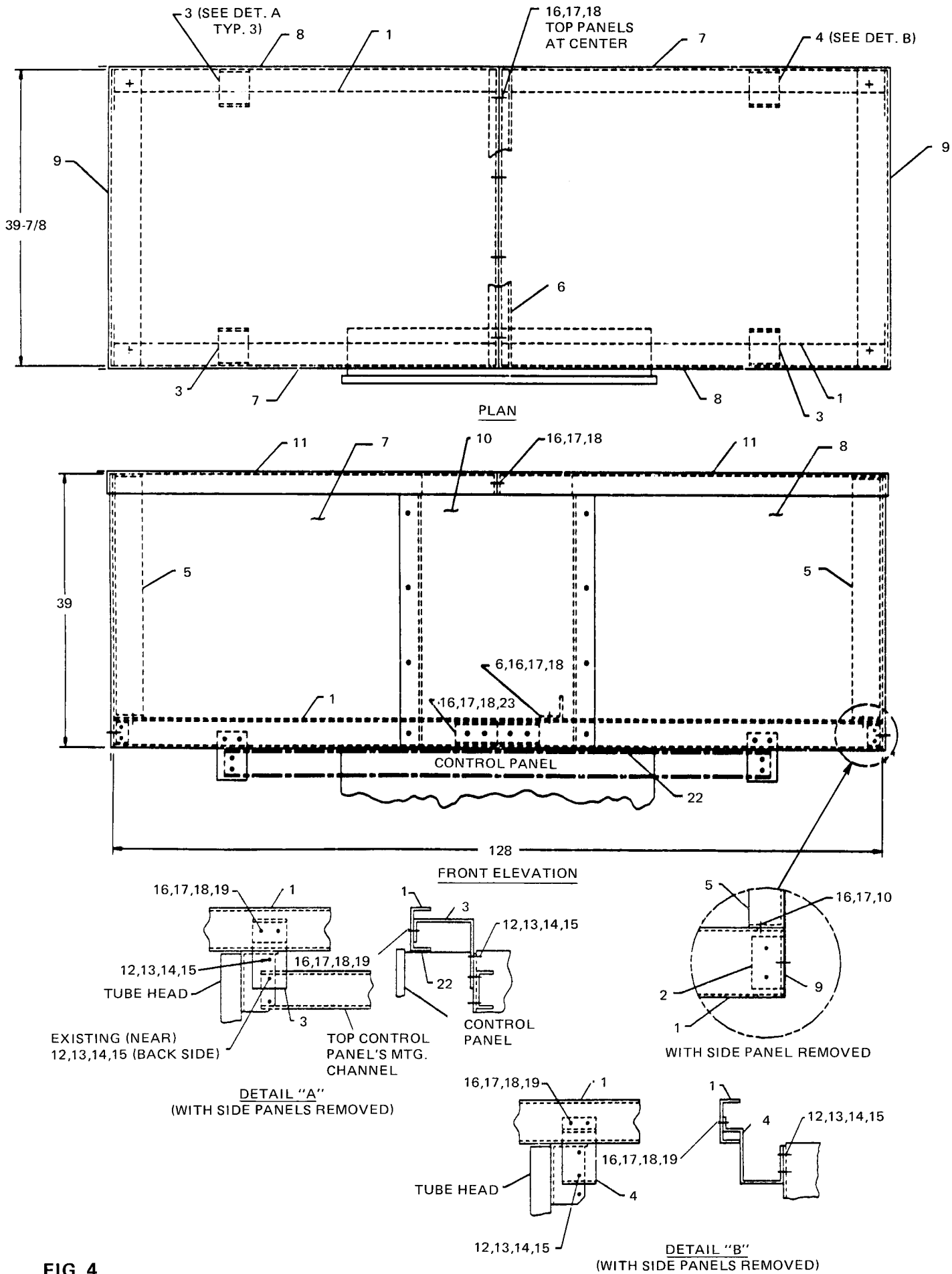


FIG. 4





---

**York  
International  
Corporation**

**Applied  
Systems**

**Post Office  
Box  
1592-36BE**

**York  
Pennsylvania  
17405-1592**

**Telephone  
717 771 7890**

**YORK®**

YORK has a policy of continuous product improvement, and reserves the right to change specifications and designs without notice.  
Printed in U.S.A.

Copyright © by York International Corporation 1990 ALL RIGHTS RESERVED

Form 150.24-NM25.2  
Supersedes: 150.24-NM25.2 (789)

RPC 4M 1090 .60  
CODES: ERR & SN