



**AIR-COOLED CONDENSING UNIT  
HERMETIC SCROLL 60 HZ**

**RENEWAL PARTS**

Supercedes: 150.63-RP1 (302)

Form: 150.63-RP1 (916)

**MODELS YCUL0016, 0026, 0030, 0036, 0040, 0046, 0056,  
0060, 0066, 0076, 0080, 0086 AND YCUL0090**



YCUL-01

15-90 TON  
53-316 Kw  
60 Hz



ALLY



200-3-60  
230-3-60  
315-3-60  
460-3-60  
575-3-60  
MODELS ONLY

# TABLE OF CONTENTS

	<u>PAGE</u>
UNIT NOMENCLATURE NAMEPLATE ENGINEERING DATA .....	3
<b>CONDENSER</b>	
CONDENSER COIL COMPONENTS .....	4
<b>FAN</b>	
FAN COMPONENTS.....	6
<b>PIPING</b>	
REFRIGERANT AND OIL PIPING COMPONENTS.....	8
<b>COMPRESSOR</b>	
COMPRESSOR .....	12
<b>CONTROL AND POWER PANELS</b>	
CONTROL PANEL AND POWER PANEL .....	16
TRANSDUCERS, PRESSURE CUTOUTS AND TEMP SENSORS.....	44
WIRE HARNESS CONNECTORS - FIELD REPLACEMENT PART NUMBERS.....	46
<b>CHILLER OPTIONS</b>	
YCUL CHILLER OPTIONS - KITS .....	48
ENCLOSURE KIT OPTIONS .....	50
REMOTE CONTROL CENTER .....	52
REMOTE CURRENT/TEMPERATURE RESET PARTS BREAKDOWN .....	53
RECOMMENDED SPARE PARTS.....	54

## **WARNING**

### **HIGH VOLTAGE**

**IS USED IN THE OPERATION OF THIS EQUIPMENT.**

**DEATH OR SERIOUS INJURY**

**MAY RESULT IF PERSONNEL FAIL TO OBSERVE SAFETY PRECAUTIONS.**

Work on electronic equipment should not be undertaken unless the individual(s) have been trained in the proper maintenance of equipment and is (are) familiar with its potential hazards.

Shut off power supply to the equipment before beginning work and follow lockout procedures. When working inside equipment with power off, take care to discharge every capacitor likely to hold dangerous potential.

Be careful not to contact high voltage connections when installing or operating this equipment.

### **LOW VOLTAGE**

DO NOT be misled by the term "low voltage." Voltages as low as 50 volts may cause death.

UNIT NOMENCLATURE NAMEPLATE ENGINEERING DATA

# Y C U L 0 0 9 0 S C 4 6 X A A

1	2	3	4	5	6	7	8	9	10	11	12	13	14	15
BASE PRODUCT TYPE				NOMINAL CAPACITY				UNIT DESIGNATOR	REFRIGERANT	VOLTAGE/STARTER			DESIGN/DEVELOPMENT LEVEL	
Y	C	U	L	#	#	#	#	S	C	1	7		A	A
: YORK : Chiller : Condensing Unit L : Scroll				Tons/Kw 0016 to 0090				Standard Unit	:R-22	200/3/60 230/3/60 380/3/60 460/3/60 575/3/60	:Design Series A :Engineering Change or PIN Level			
													X	
													:Across the Line	

16	17	18	19	20	21	22	23	24	25	26	27	28	29	30	31	32	33	34	35	36	37			
POWER FIELD				CONTROLS FIELD								COMPRESSOR / PIPING FIELD												
X	X			L	H	A	T	S	F	G	R	S	B	#	#	T	S	C	X	1	X	X	X	X
: MP Supply TB : SP Supply TB : SP NF Disconnect Switch : SP Circuit Breaker w/ Lockable Handle  : Control Transformer (factory) : Power Factor Capacitor				: Low Ambient Kit (factory) : High Ambient Kit (factory) : Both Low / High Ambient (factory) : BAS/EMS Temp. Reset / Offset : Spanish LCD & Keypad Display : French LCD & Keypad Display : German LCD & Keypad Display : Discharge Pressure Transducers / Readout Kit : Suction Pressure Transducers / Readout Kit : Both Discharge & Suction Pressure Transducers / Readout : N. American Safety Code (cU.L./cETL) : No Listing (typically 50 HZ non-CE, non-U.L.) : Remote Control Panel : Sequence Control & Automatic Lead Transfer								: Low Temp. Brine (LBrT) : Thermal Storage : Chicago Relief Code  : Hot Gas By-Pass (# circuits)												

MP = Multiple Point  
 SP = Single Point  
 NF = Non-Fused  
 TB = Terminal Block  
 Ser. = Service  
 Ind. Sys. Brkr. & L. Ext. Handles = Individual System Breaker & Lockable External Handle

38	39	40	41	42	43	44	45	46	47	48	49	50	51	52	53	54
EVAP. FIELD						CONDENSER FIELD			CABINET FIELD							
3	D	W	V	S	A	R	X	C	B	P	X	X	L	X		
: 300 PSIG DWP Waterside : Double Thick Insulation : Weld Flange Kit : Victaulic Flange Kit : Flow Switch : ASME Pressure Vessel & Associated Codes : Remote DX Cooler						: Aluminum : Copper : Black Fin : Phenolic : X : TEAO Fan Motors			: Wire Condenser Headers Only (factory) : Wire (Full Unit) Enc. Panels (factory) : Wire (Full Unit) Enc. Panels (field) : Wire/Louvered Enc. Panels (factory) : Wire/Louvered Enc. Panels (field) : Louvered (Cond. Only) Enc. Panels (factory) : Louvered (Cond. Only) Enc. Panels (field) : Louvered (Full Unit) Enc. Panels (factory) : Louvered (Full Unit) Enc. Panels (field) : Acoustic Sound Blanket  : Low Sound Fans 1: 1" Deflection S: Seismic N: Neoprene Pads							

**55**  
 EXTENDED FIELD  
 X : 1st Year Parts Only  
 B : 1st Year Parts & Labor  
 C : 2nd Year Parts Only  
 D : 2nd Year Parts & Labor  
 E : 5 Year Compressor Parts Only  
 F : 5 Year Compressor Parts & Labor Only  
 G : 5 Year Units Parts Only  
 H : 5 Year Unit Parts & Labor

NOTES:  
 1. Q :DENOTES SPECIAL / S.Q.  
 2. # :DENOTES STANDARD  
 3. X :w/in OPTIONS FIELD, DENOTES NO OPTION SELECTED  
 4. Agency Files (i.e. U.L. / ETL; CE; ARI; ETC.) will contain info. based on the first 14 characters only.

# CONDENSER COIL COMPONENTS

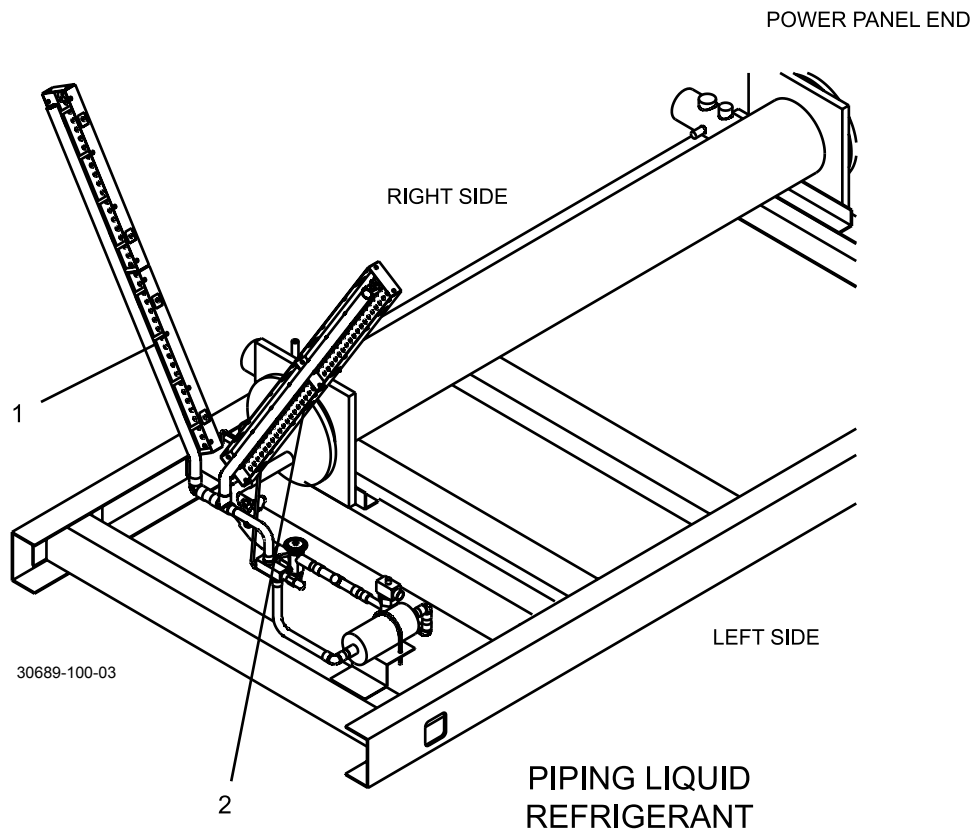
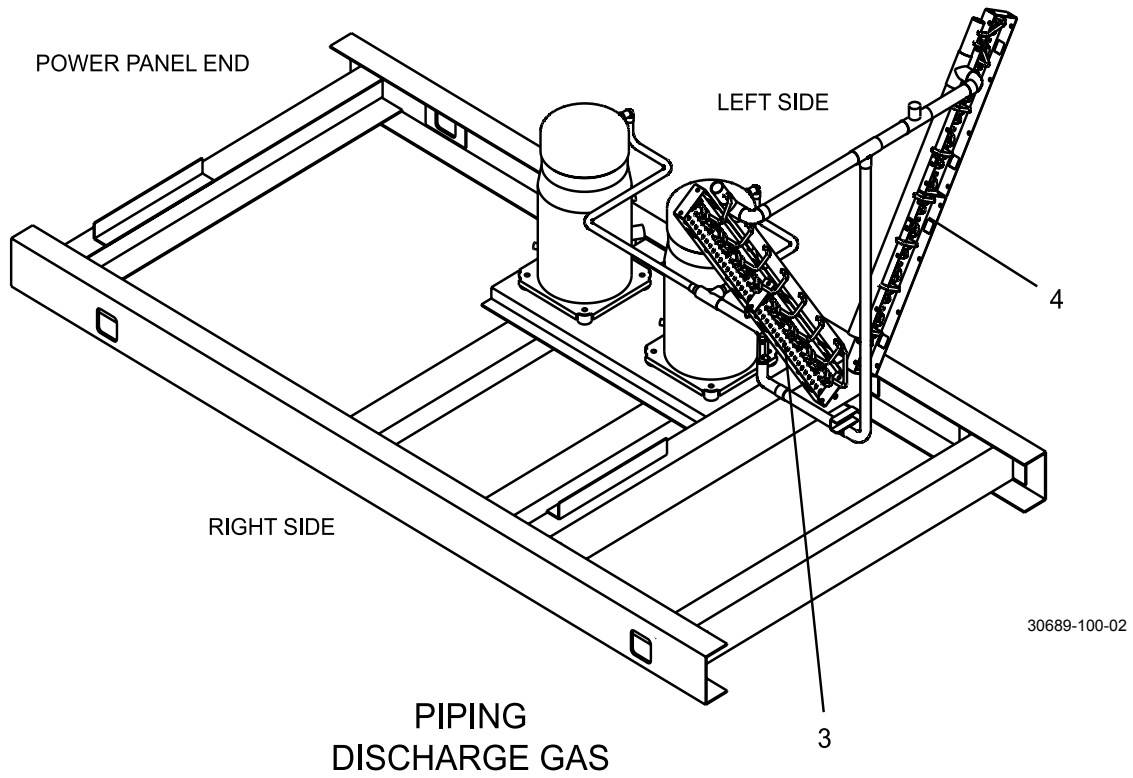


FIG. 1 – CONDENSER COIL LAYOUT (REF. TABLE 1, PAGE 5)

Headers for each circuit are denoted left and right as viewed from power panel end of chiller.

## CONDENSOR COIL COMPONENTS (CONT'D)

**TABLE 1 – CONDENSER COILS – YCUL0016, 0026, 0030 AND YCUL0036 (SEE FIG. 1, PAGE 4)**

ITEM NUMBER	DESCRIPTION	POSITION	QTY	YCUL0016 & YCUL0026	YCUL0030	YCUL0036
1	Header, Liquid	Right	2	375-31225-000	375-30685-000	375-25897-000
2	Header, Liquid	Left	2	375-31226-000	375-30686-000	375-25894-000
3	Header, Discharge	Right	2	375-31223-000	375-30683-000	375-30607-000
4	Header, Discharge	Left	2	375-31224-000	375-30684-000	375-30608-000
<b>ALUMINUM FIN COILS</b>						
5	Coils (Not Shown)	Both	4	375-30636-100	375-30675-100	375-30603-200
<b>BLACK FIN COILS</b>						
5	Coils (Not Shown)	Both	4	375-30957-100	375-30958-100	375-30959-200
<b>PHENOLIC COILS</b>						
5	Coils (Not Shown)	Both	4	375-30970-100	375-30971-100	375-30972-200
<b>COPPER COILS</b>						
5	Coils (Not Shown)	Both	4	375-30793-100	375-30974-100	375-30795-200

**TABLE 1 – CONDENSER COILS – YCUL0040, 0046, 0056, 0060, AND YCUL0066 (SEE FIG. 1, PAGE 4)**

ITEM NUMBER	DESCRIPTION	POSITION	QTY	YCUL0040	YCUL0046, 0056 & YCUL0060	YCUL0066
1	Header, Liquid	Right	2	375-25897-000	375-30626-000	375-30766-000
2	Header, Liquid	Left	2	375-25894-000	375-30627-000	375-30767-000
3	Header, Discharge	Right	2	375-30607-000	375-30619-000	375-30764-000
4	Header, Discharge	Left	2	375-30608-000	375-30620-000	375-30765-000
<b>ALUMINUM FIN COILS</b>						
5	Coils (Not Shown)	Both	8	375-30603-100(4)	375-30615-100	375-30751-100
<b>BLACK FIN COILS</b>						
5	Coils (Not Shown)	Both	8	375-30959-100(4)	375-30408-100	375-30944-100
<b>PHENOLIC COILS</b>						
5	Coils (Not Shown)	Both	8	375-30972-100(4)	375-30409-100	375-30945-100
<b>COPPER COILS</b>						
5	Coils (Not Shown)	Both	8	375-30795-100(4)	375-30410-100	375-30946-100

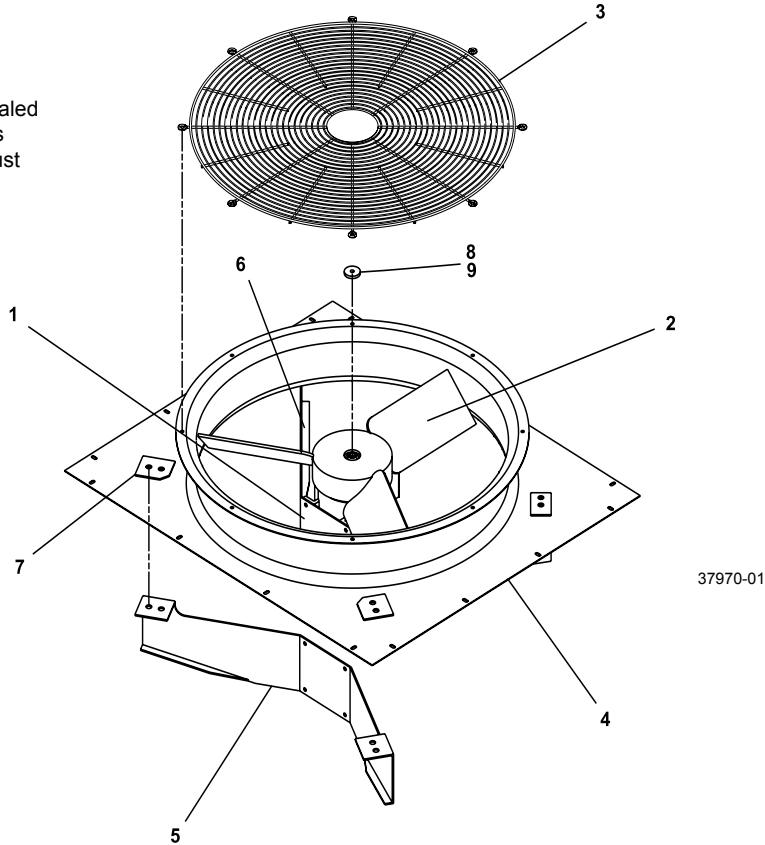
**TABLE 1 – CONDENSER COILS – YCUL0076, 0080, 0086 AND YCUL0090 (SEE FIG. 1, PAGE 4)**

ITEM NUMBER	DESCRIPTION	POSITION	QTY	YCUL0076	YCUL0080	YCUL0086	YCUL0090
1	Header, Liquid	Right	4	375-30669-000	375-30669-000	375-30447-000	375-30447-000
2	Header, Liquid	Left	4	375-30668-000	375-30668-000	375-30446-000	375-30446-000
3	Header, Discharge	Right	4	375-30663-000	375-30663-000	375-25897-000	375-25897-000
4	Header, Discharge	Left	4	375-30662-000	375-30662-000	375-25894-000	375-25894-000
<b>ALUMINUM FIN COILS</b>							
5	Coils (Not Shown)	Both	8	375-30778-100	375-30778-200	375-25892-200	375-25892-100
<b>BLACK FIN COILS</b>							
5	Coils (Not Shown)	Both	8	375-30947-100	375-30947-200	375-30956-200	375-30956-100
<b>PHENOLIC COILS</b>							
5	Coils (Not Shown)	Both	8	375-30948-100	375-30948-200	375-30954-200	375-30954-100
<b>COPPER COILS</b>							
5	Coils (Not Shown)	Both	8	375-30949-100	375-30949-200	375-30955-200	375-30955-100

# FAN COMPONENTS

**SERVICE NOTE:**

Fan Hub to Shaft Joint should be sealed with protective coating - factory uses RUST VETO 344 - a solvent type, rust preventative coating.



**FIG. 2 – FAN COMPONENTS**

**SERVICE NOTE:** Pin Location 52 in Model Number will be “X” for Standard Fan, or “L” for Low Noise Fan. See page 5.

**TABLE 2 – FAN COMPONENTS**

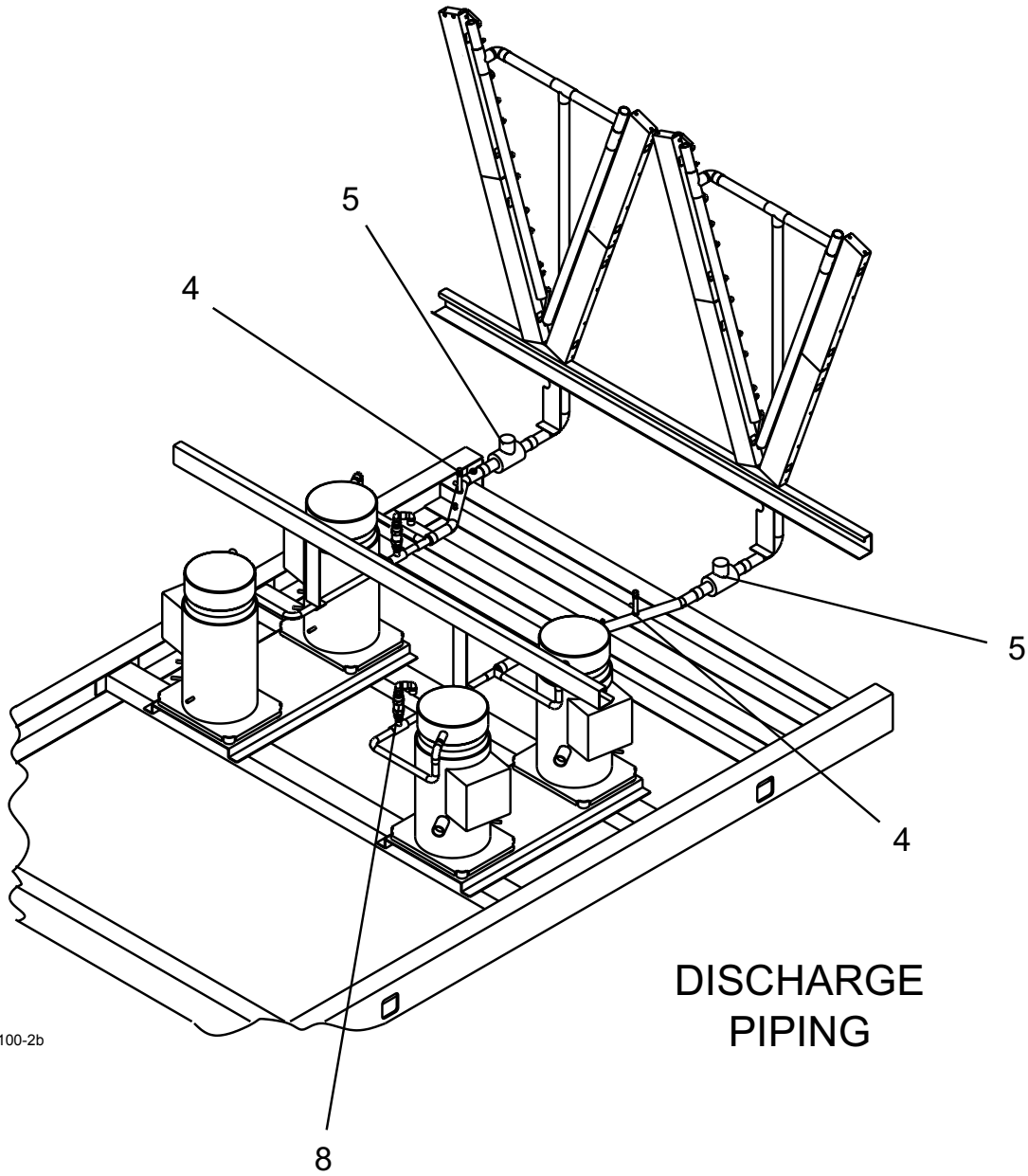
ITEM NUMBER	DESCRIPTION	VOLTAGE CODE	FAN TYPE	
			STANDARD 7/8" Ø SHAFT, 967 RPM	LOW NOISE (OPTIONAL) 7/8" Ø SHAFT, 704 RPM
<b>1<sup>S</sup></b>	Motor, Fan 2 HP (YCUL0016-YCUL0090)	-17	024-30900-002	024-30933-002
		-28	024-30900-002	024-30933-002
		-40	024-30900-004	024-30933-004
		-46	024-30900-001	024-30933-001
		-58	024-30900-003	024-30933-003
<b>2<sup>S</sup></b>	Blade, (YCUL0016-YCUL0066) Blade, (YCUL0076-YCUL0090)	ALL	026-35607-000	026-36579-000
			026-37577-000	026-37579-000
<b>3</b>	Guard, (YCUL0016-YCUL0066) Guard, (YCUL0076-YCUL0090)	ALL	026-37521-000	026-37521-000
			026-35605-000	026-35605-000
<b>4</b>	Orifice, (YCUL0016-YCUL0066) Orifice, (YCUL0076-YCUL0090)	ALL	026-37520-000	
			026-36141-000	
<b>5</b>	Support (YCUL0016-YCUL0066) Support (YCUL0076-YCUL0090)	ALL	075-25413-018	
			075-25584-000	
<b>6</b>	Support (YCUL0016-YCUL0066) Support (YCUL0076-YCUL0090)	ALL	075-25413-019	
			075-25583-000	
<b>7</b>	Plate, Reinf. (YCUL0016-YCUL0066) Plate, Reinf. (YCUL0076-YCUL0090)	ALL	075-25413-023	
		ALL	075-25413-024	
<b>8</b>	Screw, Cap	ALL	021-18494-000	
<b>9</b>	Spacer, Fan Motor	ALL	075-29007-000	

**S** = Recommended Spare Parts

This page intentionally left blank

# REFRIGERANT AND OIL PIPING COMPONENTS CHILLER MODEL YCUL – STYLE A

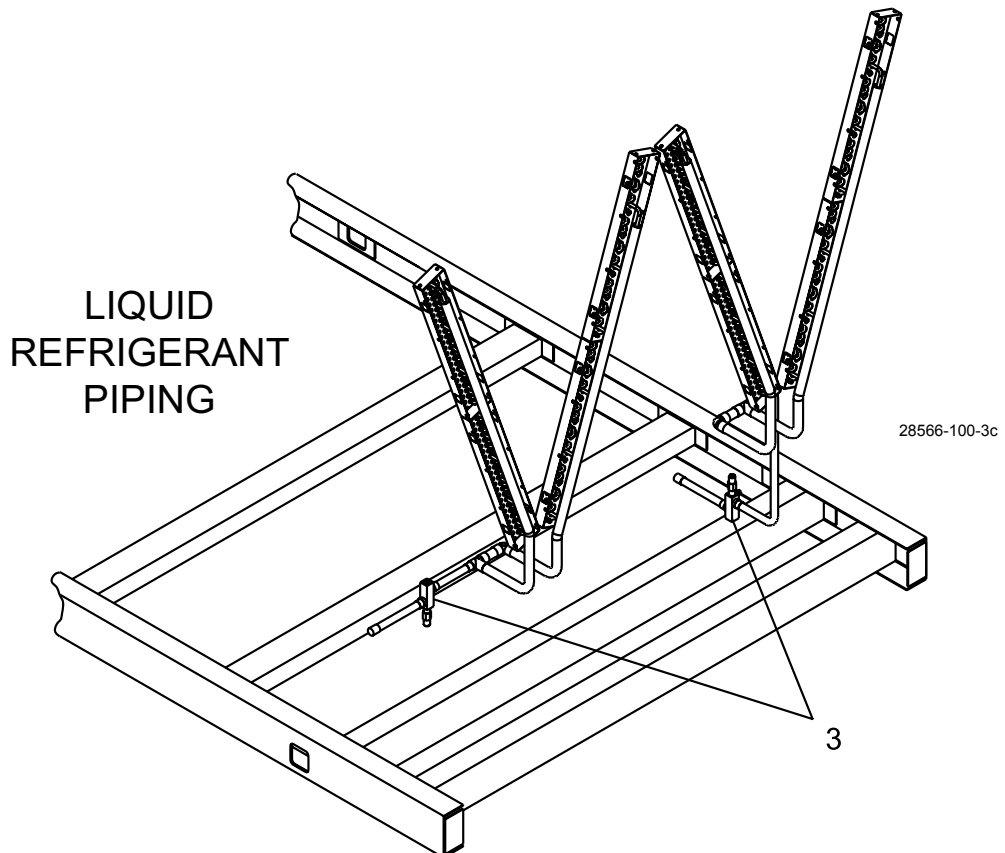
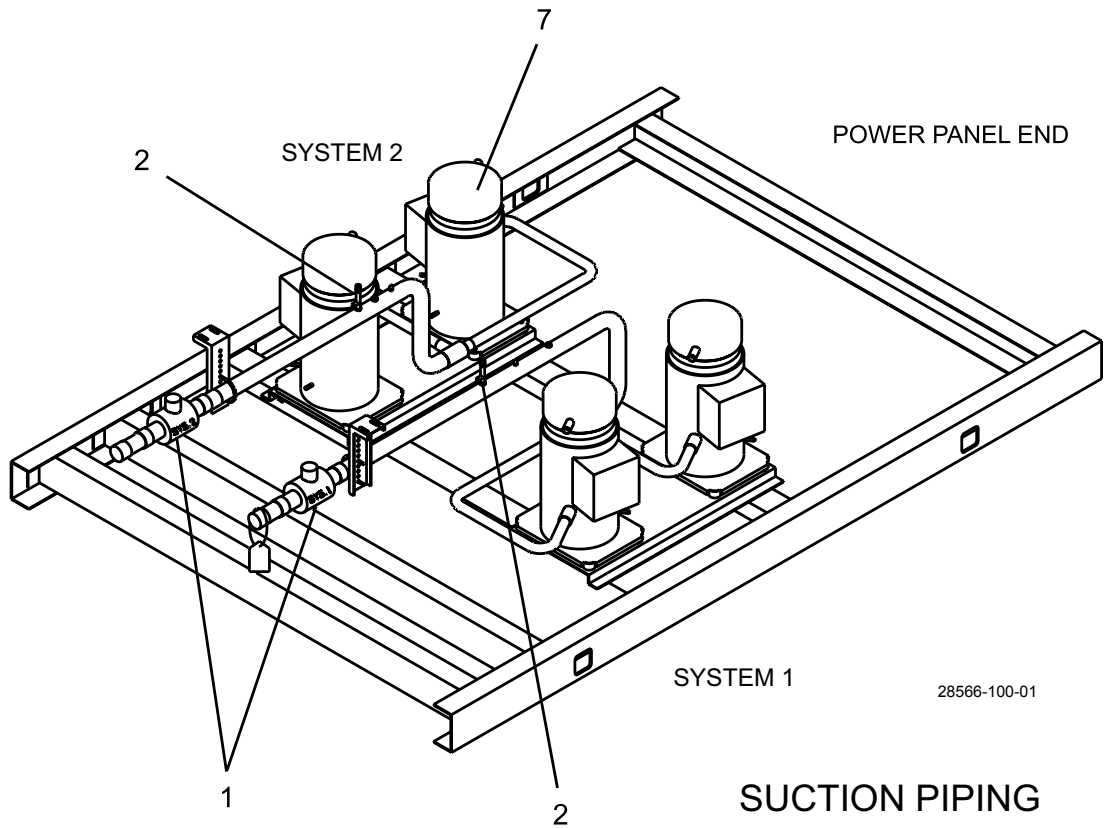
Piping



28566-100-2b

**FIG. 3** – REFRIGERANT AND OIL PIPING COMPONENTS - MODEL YCUL0046 SHOWN  
(REF. TABLE 3, PAGES 10 AND 11)

### REFRIGERANT AND OIL PIPING COMPONENTS (CONT'D) CHILLER MODEL YCUL – STYLE A



**FIG. 4 – REFRIGERANT AND OIL PIPING COMPONENTS - MODEL YCUL0046 SHOWN  
(REF. TABLE 3, PAGES 10 AND 11)**

## REFRIGERANT AND OIL PIPING COMPONENTS (CONT'D) CHILLER MODEL YCUL – STYLE A

**TABLE 3 – REFRIGERANT PIPING AND OIL PIPING COMPONENTS**  
(SEE FIGS. 3 AND 4, PAGES 8 AND 9)

ITEM NO.	SYSTEM	DESCRIPTION	YCUL0016- YCUL0026	YCUL0030	YCUL0036	YCULS0040
1	1	Valve, Shut-Off (Suction)	022-09750	022-09750	022-09752	022-09752
2	1	Valve, Stop (Suction)	022-00009	022-00009	022-00009	022-00009
3 <sup>s</sup>	1	Valve, Stop (Liquid)	022-02992	022-02992	022-02992	022-02992
4	1	Valve, Stop (Discharge)	022-00009	022-00009	022-00009	022-00009
5	1	Valve, Shut-Off (Discharge)	022-09749	022-09749	022-09750	022-08883
6	1	Insulation, 1 1/8"	010-02841	N/A	N/A	N/A
	1	Insulation, 1 3/8"	010-02848	N/A	N/A	N/A
	1	Insulation, 1 5/8"	010-03628	010-03628	010-03628	010-03628
	1	Insulation, 2 1/8"	N/A	010-02842	010-02842	010-02842
7	1	Compressor	See Pages 14 and 15 for Compressor Part Numbers			
8	1	Isolator Kit, Compressor	5710029P03	5710029P03	5710029P03	5710029P03
9	1	Valve, Relief	022-08863	022-08863	022-08882	022-08882

<sup>s</sup> Recommended Spare Part

ITEM NO.	SYSTEM	DESCRIPTION	YCUL0046	YCUL0056	YCUL0060	YCUL0066
1	1	Valve, Shut-Off (Suction)	022-09752	022-09752	022-09752	022-09752
2	1	Valve, Stop (Suction)	022-00009	022-00009	022-00009	022-00009
3 <sup>s</sup>	1	Valve, Stop (Liquid)	022-02992	022-02992	022-02992	022-02992
4	1	Valve, Stop (Discharge)	022-00009	022-00009	022-00009	022-00009
5	1	Valve, Shut-Off (Discharge)	022-09750	022-09750	022-08883	022-08883
6	1	Insulation, 1 1/8"	N/A	N/A	N/A	N/A
	1	Insulation, 1 3/8"	010-02848	N/A	N/A	N/A
	1	Insulation, 1 5/8"	N/A	010-03628	010-03628	010-03628
	1	Insulation, 2 1/8"	010-02842	010-02842	010-02842	010-02842
7	1	Compressor	See Pages 14 and 15 for Compressor Part Numbers			
8	1	Isolator Kit, Compressor	5710029P03	5710029P03	5710029P03	5710029P03
9	1	Valve, Relief	022-08863	022-08863	022-08882	022-08882

<sup>s</sup> Recommended Spare Part

Note: York Part Number for Adhesive - 013-00852-000

## REFRIGERANT AND OIL PIPING COMPONENTS (CONT'D) CHILLER MODEL YCUL – STYLE A

**TABLE 3 (CONT'D) – REFRIGERANT PIPING AND OIL PIPING COMPONENTS  
(SEE FIGS. 3 AND 4, PAGES 8 AND 9)**

ITEM NO.	SYSTEM	DESCRIPTION	YCUL0076	YCUL0080	YCUL0086	YCULS0090
1	1	Valve, Shut-Off (Suction)	022-09752	022-09752	022-09752	022-09753
2	1	Valve, Stop (Suction)	022-00009	022-00009	022-00009	022-00009
3 <sup>s</sup>	1	Valve, Stop (Liquid)	022-10022	022-10022	022-10022	022-10022
4	1	Valve, Stop (Discharge)	022-00009	022-00009	022-00009	022-00009
5	1	Valve, Shut-Off (Discharge)	022-08883	022-08883	022-08883	022-09751
6	1	Insulation, 1 1/8"	N/A	N/A	N/A	N/A
	1	Insulation, 1 3/8"	010-02848	N/A	N/A	N/A
	1	Insulation, 1 5/8"	N/A	010-03628	010-03628	010-03628
	1	Insulation, 2 1/8"	010-02842	010-02842	010-02842	010-02842
7	1	Compressor	See Pages 14 and 15 for Compressor Part Numbers			
8	1	Isolator Kit, Compressor	5710029P03	5710029P03	5710029P03	5710029P03
9	1	Valve, Relief	022-08882	022-08882	022-08882	022-08882

<sup>s</sup> Recommended Spare Part

Note: York Part Number for Adhesive - 013-00852-000

# COMPRESSOR

YCUL0046, YCUL0056  
YCUL0060 & YCUL0066

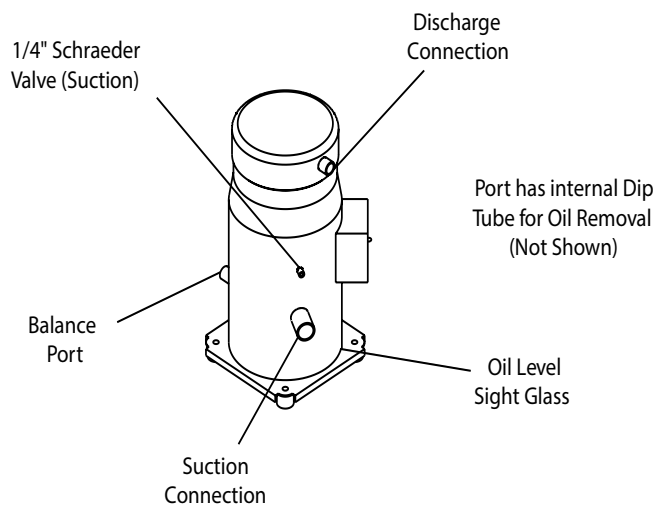
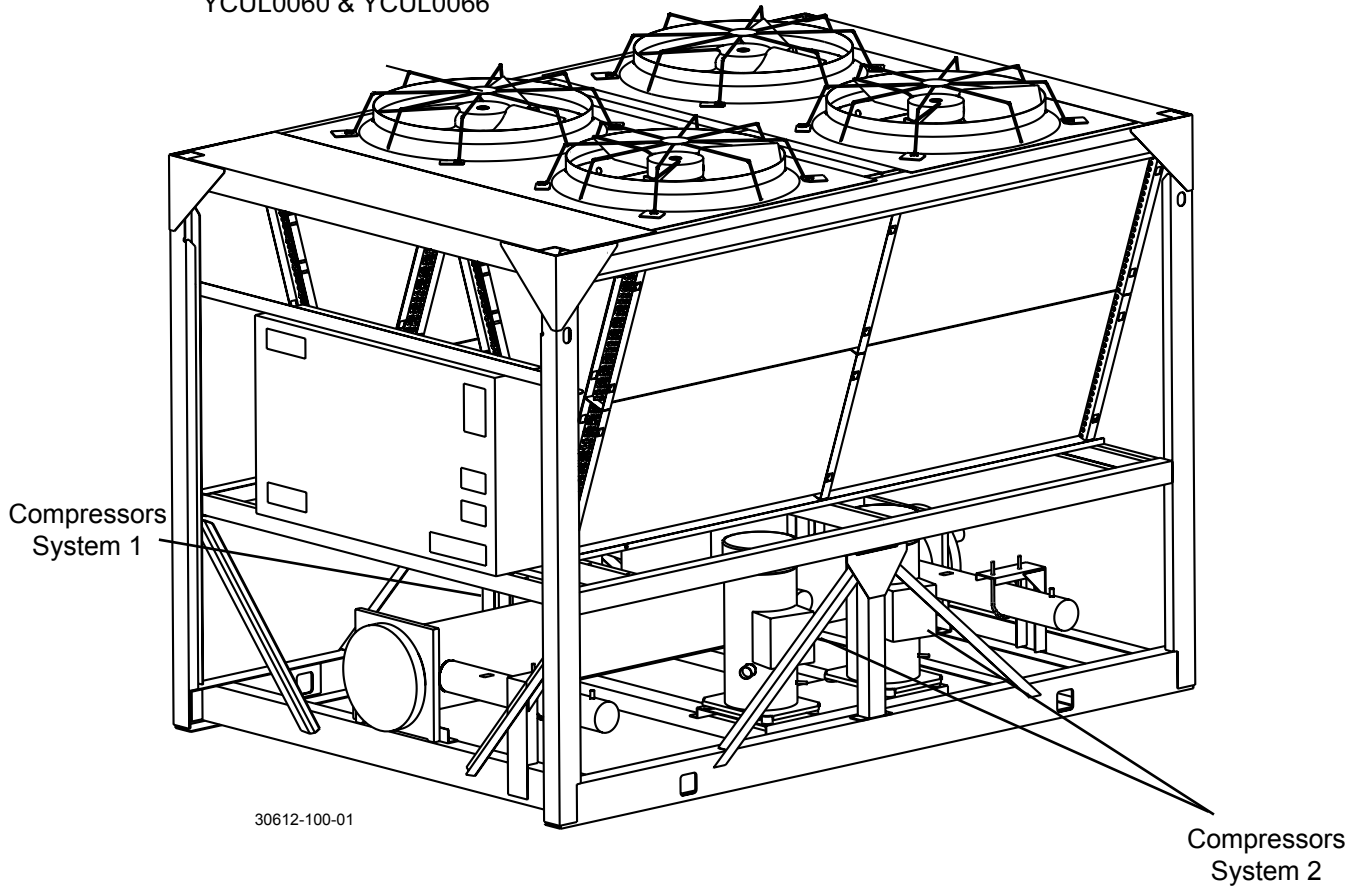
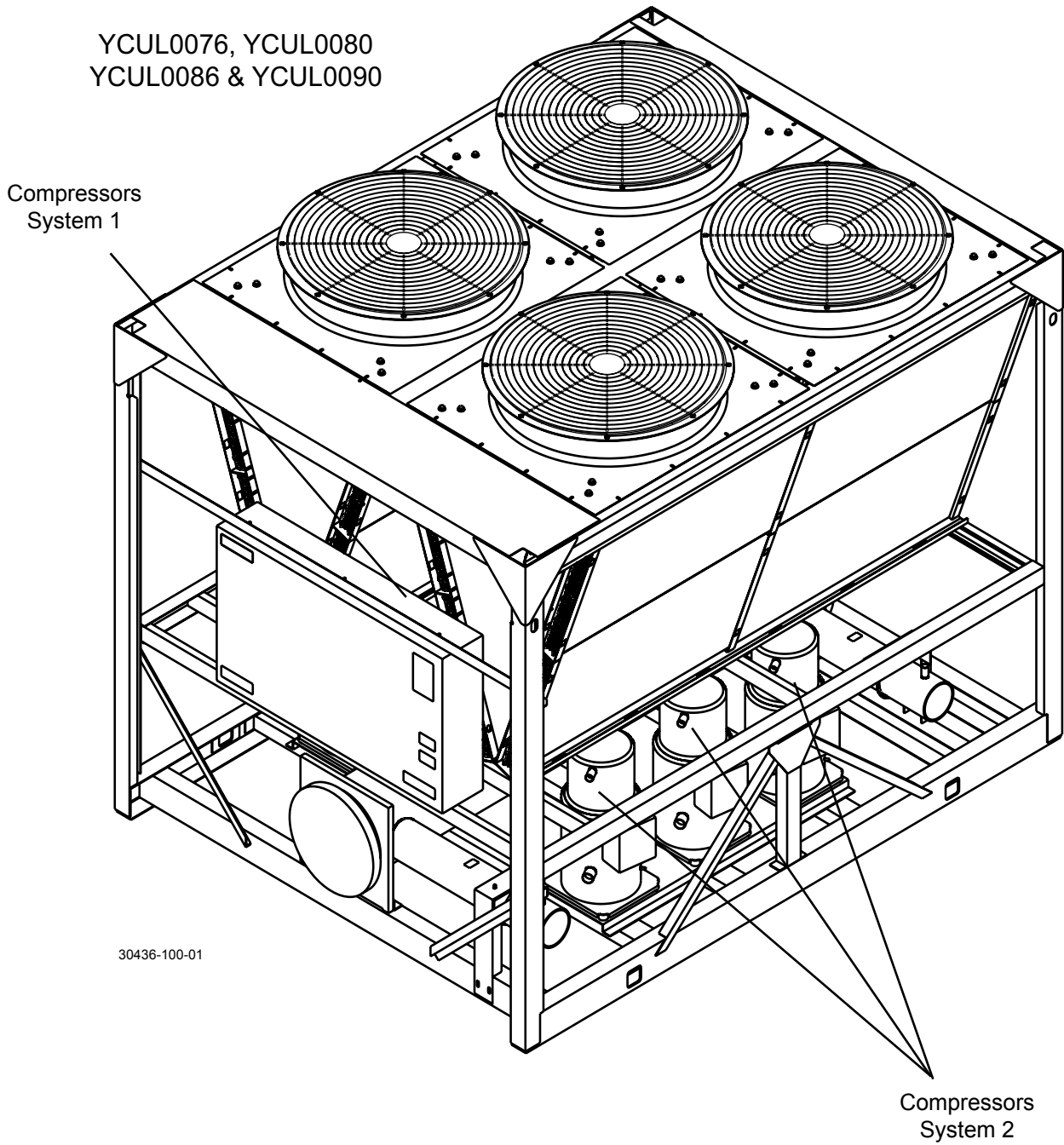


FIG. 5 – COMPRESSOR - YCUL0046 THROUGH YCUL0066 (REF. TABLE 4, PAGES 14 AND 15)

# COMPRESSOR (CONT'D)



Compressor

FIG. 6 – COMPRESSOR - YCUL0076 THROUGH YCUL0090 (REF. TABLE 4, PAGES 14 AND 15)

## COMPRESSOR (CONT'D)

**TABLE 4 – COMPRESSOR PART NUMBERS (SEE FIGS. 5 AND 6, PAGES 12 AND 13)**

MODEL	VOLTAGE CODE	QTY		SYSTEM #1 COMPRESSOR		SYSTEM #2 COMPRESSOR	
		SYS 1	SYS 2	PART #	MODEL #	PART #	MODEL #
YCUL0016	-17	2	N/A	026-36517-001	SM090	N/A	N/A
	-28	2	N/A	026-36517-001	SM090	N/A	N/A
	-40	2	N/A	026-36517-002	SM090	N/A	N/A
	-46	2	N/A	026-36517-004	SM090	N/A	N/A
	-58	2	N/A	026-36517-005	SM090	N/A	N/A
YCUL0026	-17	2	N/A	026-36518-001	SM120	N/A	N/A
	-28	2	N/A	026-36518-001	SM120	N/A	N/A
	-40	2	N/A	026-36518-002	SM120	N/A	N/A
	-46	2	N/A	026-36518-004	SM120	N/A	N/A
	-58	2	N/A	026-36518-005	SM120	N/A	N/A
YCUL0030	-17	2	N/A	026-36500-001	SM160	N/A	N/A
	-28	2	N/A	026-36500-001	SM160	N/A	N/A
	-40	2	N/A	026-36500-004	SM160	N/A	N/A
	-46	2	N/A	026-36500-002	SM160	N/A	N/A
	-58	2	N/A	026-36500-005	SM160	N/A	N/A
YCUL0036	-17	2	N/A	026-36162-001	SM185	N/A	N/A
	-28	2	N/A	026-36162-001	SM185	N/A	N/A
	-40	2	N/A	026-36162-004	SM185	N/A	N/A
	-46	2	N/A	026-36162-002	SM185	N/A	N/A
	-58	2	N/A	026-36162-005	SM185	N/A	N/A
YCUL0040	-17	3	N/A	026-36500-001	SM160	N/A	N/A
	-28	3	N/A	026-36500-001	SM160	N/A	N/A
	-40	3	N/A	026-36500-004	SM160	N/A	N/A
	-46	3	N/A	026-36500-002	SM160	N/A	N/A
	-58	3	N/A	026-36500-005	SM160	N/A	N/A
YCUL0046	-17	2	2	026-36514-001	SM125	026-36514-001	SM125
	-28	2	2	026-36514-001	SM125	026-36514-001	SM125
	-40	2	2	026-36514-005	SM125	026-36514-005	SM125
	-46	2	2	026-36514-002	SM125	026-36514-002	SM125
	-58	2	2	026-36514-004	SM125	026-36514-004	SM125
YCUL0056	-17	2	2	026-36500-001	SM160	026-36500-001	SM160
	-28	2	2	026-36500-001	SM160	026-36500-001	SM160
	-40	2	2	026-36500-004	SM160	026-36500-004	SM160
	-46	2	2	026-36500-002	SM160	026-36500-002	SM160
	-58	2	2	026-36500-005	SM160	026-36500-005	SM160
YCUL0060	-17	2	2	026-36162-001	SM185	026-36500-001	SM160
	-28	2	2	026-36162-001	SM185	026-36500-001	SM160
	-40	2	2	026-36162-004	SM185	026-36500-004	SM160
	-46	2	2	026-36162-002	SM185	026-36500-002	SM160
	-58	2	2	026-36162-005	SM185	026-36500-005	SM160
YCUL0066	-17	2	2	026-36162-001	SM185	026-36162-001	SM185
	-28	2	2	026-36162-001	SM185	026-36162-001	SM185
	-40	2	2	026-36162-004	SM185	026-36162-004	SM185
	-46	2	2	026-36162-002	SM185	026-36162-002	SM185
	-58	2	2	026-36162-005	SM185	026-36162-005	SM185

Compressor

## COMPRESSOR (CONT'D)

**TABLE 4 – COMPRESSOR PART NUMBERS (SEE FIGS. 5 AND 6, PAGES 12 AND 13)**

MODEL	VOLTAGE CODE	QTY		SYSTEM #1 COMPRESSOR		SYSTEM #2 COMPRESSOR	
		SYS 1	SYS 2	PART #	MODEL #	PART #	MODEL #
YCUL0076	-17	3	3	026-36500-001	SM160	026-36514-001	SM125
	-28	3	3	026-36500-001	SM160	026-36514-001	SM125
	-40	3	3	026-36500-004	SM160	026-36514-005	SM125
	-46	3	3	026-36500-002	SM160	026-36514-002	SM125
	-58	3	3	026-36500-005	SM160	026-36514-004	SM125
YCUL0080	-17	3	3	026-36500-001	SM160	026-36500-001	SM160
	-28	3	3	026-36500-001	SM160	026-36500-001	SM160
	-40	3	3	026-36500-004	SM160	026-36500-004	SM160
	-46	3	3	026-36500-002	SM160	026-36500-002	SM160
	-58	3	3	026-36500-005	SM160	026-36500-005	SM160
YCUL0086	-17	3	3	026-36162-001	SM185	026-36500-001	SM160
	-28	3	3	026-36162-001	SM185	026-36500-001	SM160
	-40	3	3	026-36162-004	SM185	026-36500-004	SM160
	-46	3	3	026-36162-002	SM185	026-36500-002	SM160
	-58	3	3	026-36162-005	SM185	026-36500-005	SM160
YCUL0090	-17	3	3	026-36162-001	SM185	026-36162-001	SM185
	-28	3	3	026-36162-001	SM185	026-36162-001	SM185
	-40	3	3	026-36162-004	SM185	026-36162-004	SM185
	-46	3	3	026-36162-002	SM185	026-36162-002	SM185
	-58	3	3	026-36162-005	SM185	026-36162-005	SM185

ITEM	DESCRIPTION	MODEL
		YCUL0016 - YCUL0090
OIL <sup>s</sup>	OIL, TYPE 'F'	011-00434-000

<sup>s</sup> Recommended Spare Part

# CONTROL PANEL AND POWER PANEL

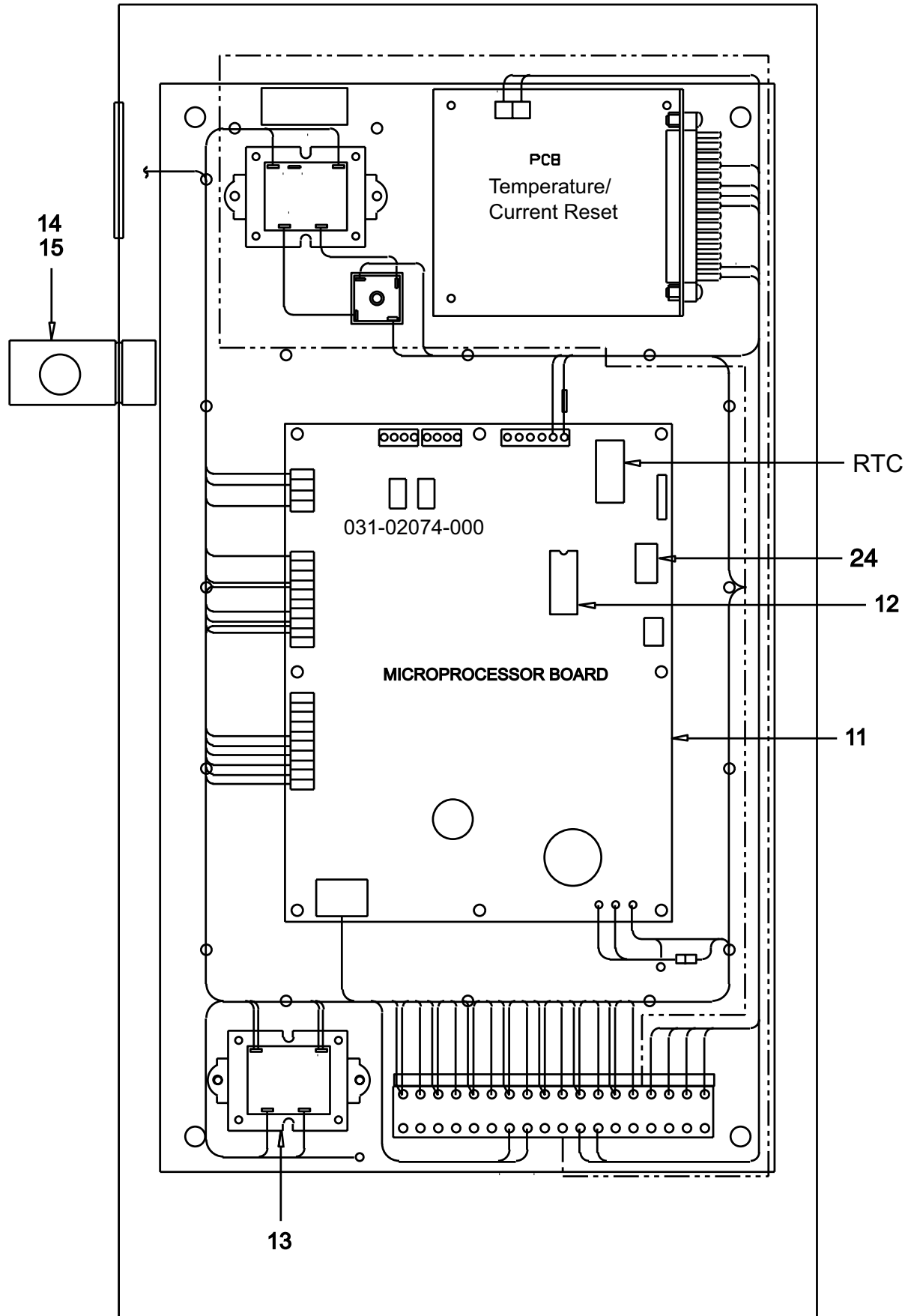
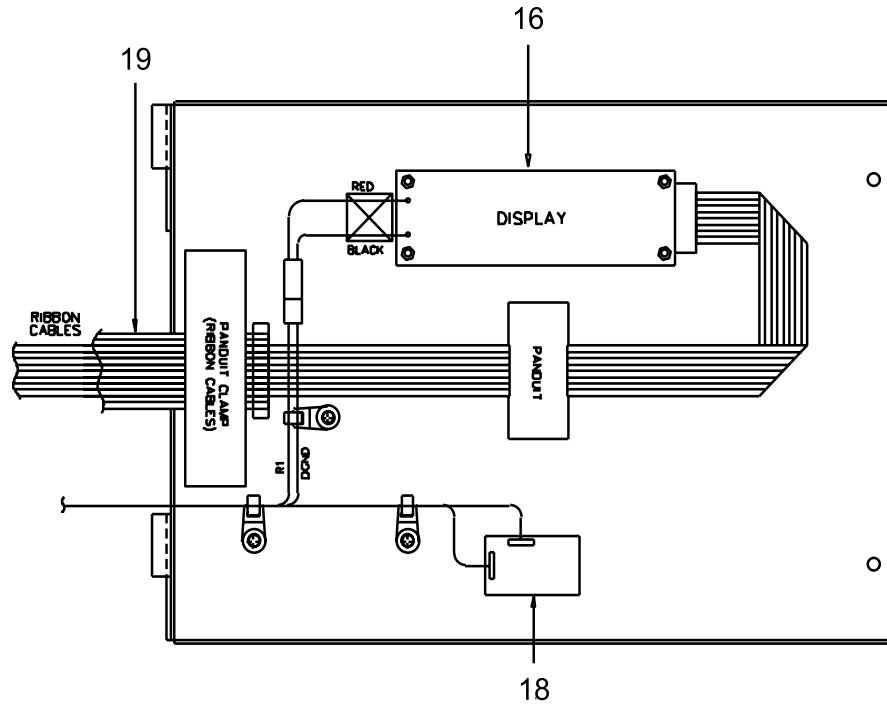


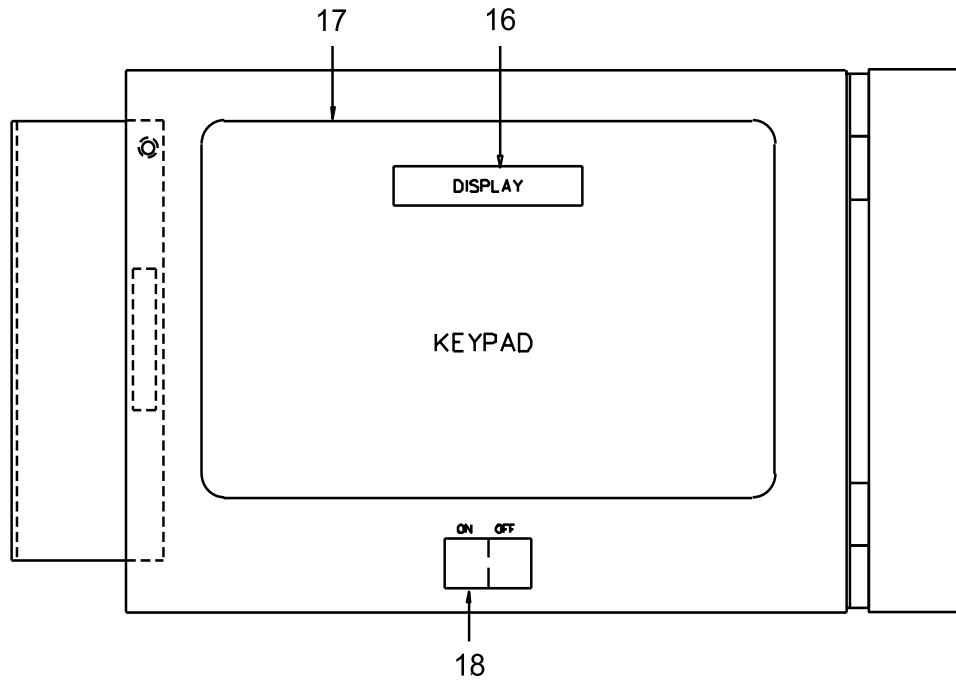
FIG. 7 – CONTROL PANEL COMPONENTS (REF. TABLE 6, PAGES 23-42)

LD05166

### CONTROL PANEL AND POWER PANEL (CONT'D)



DISPLAY DOOR REAR VIEW

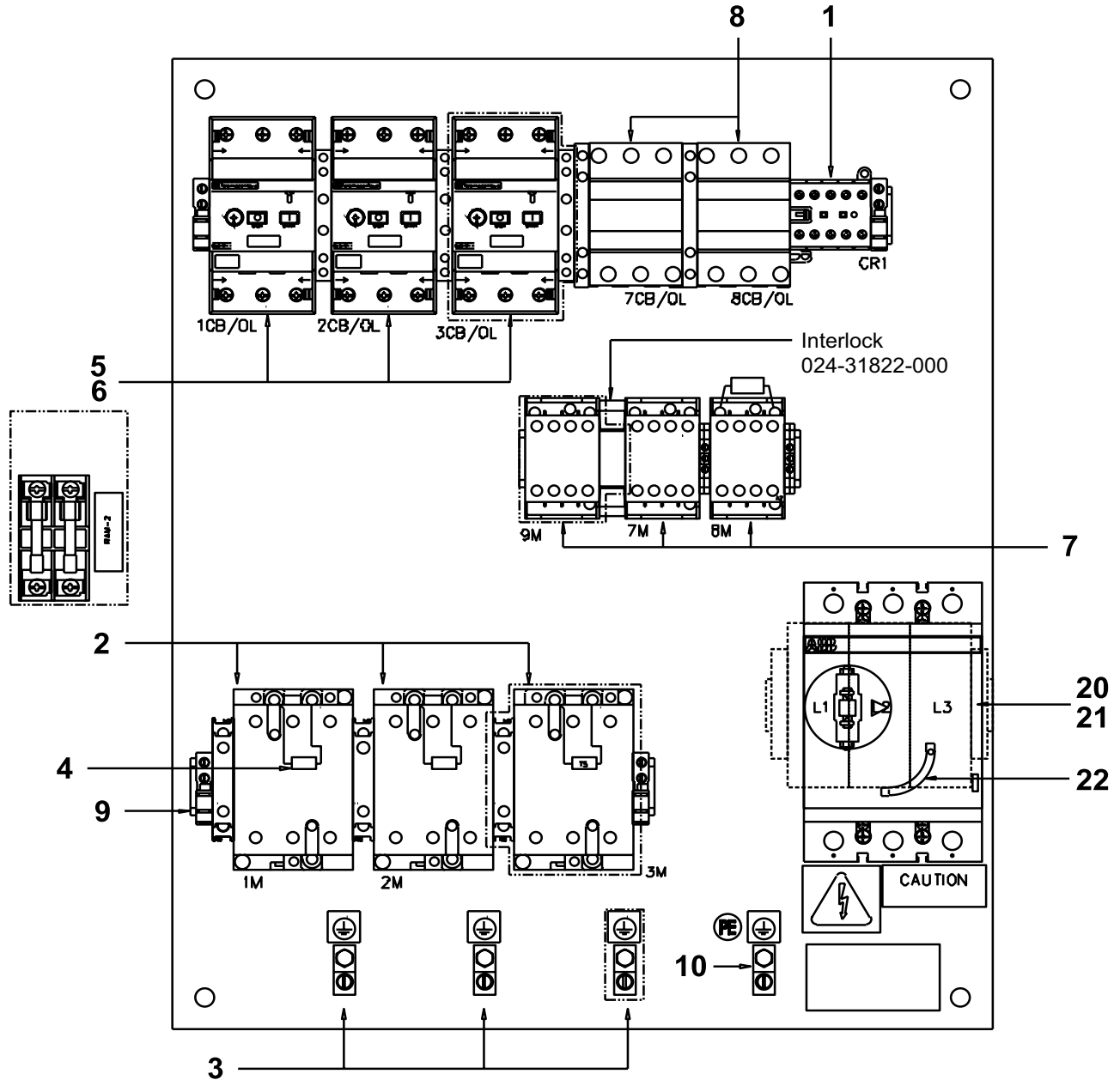


DISPLAY DOOR FRONT VIEW

LD05167

FIG. 8 – CONTROL PANEL COMPONENTS (REF. TABLE 6, PAGES 23-42)

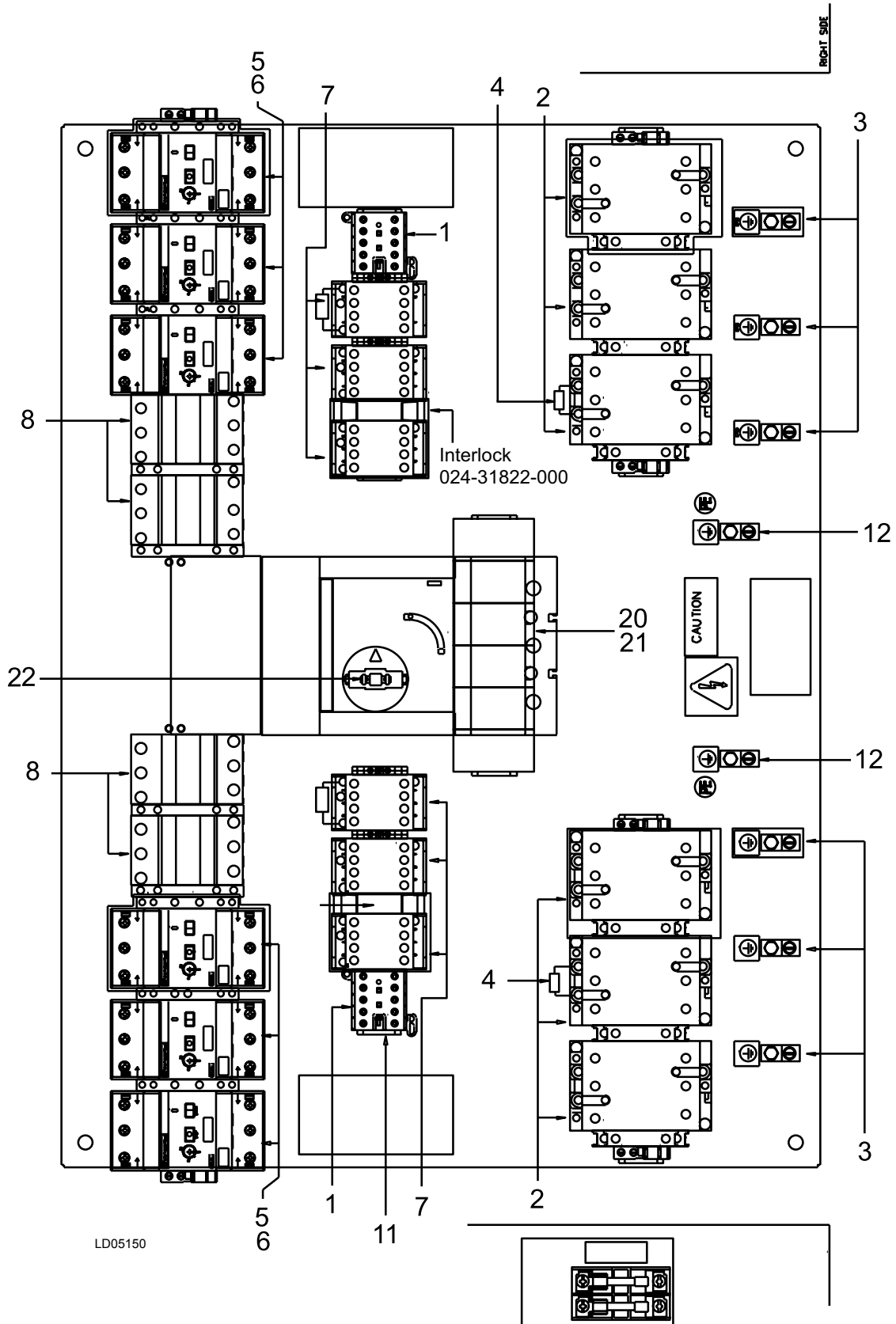
# CONTROL PANEL AND POWER PANEL (CONT'D)



LD05161

FIG. 9 – POWER PANEL COMPONENTS - YCUL0016-YCUL0040 (REF. TABLE 6, PAGES 23-42)

### CONTROL PANEL AND POWER PANEL (CONT'D)



Control & Power Panel

FIG. 10 – POWER PANEL COMPONENTS - YCUL0046-YCUL0066 (REF. TABLE 6, PAGES 23-42)

# CONTROL PANEL AND POWER PANEL (CONT'D)

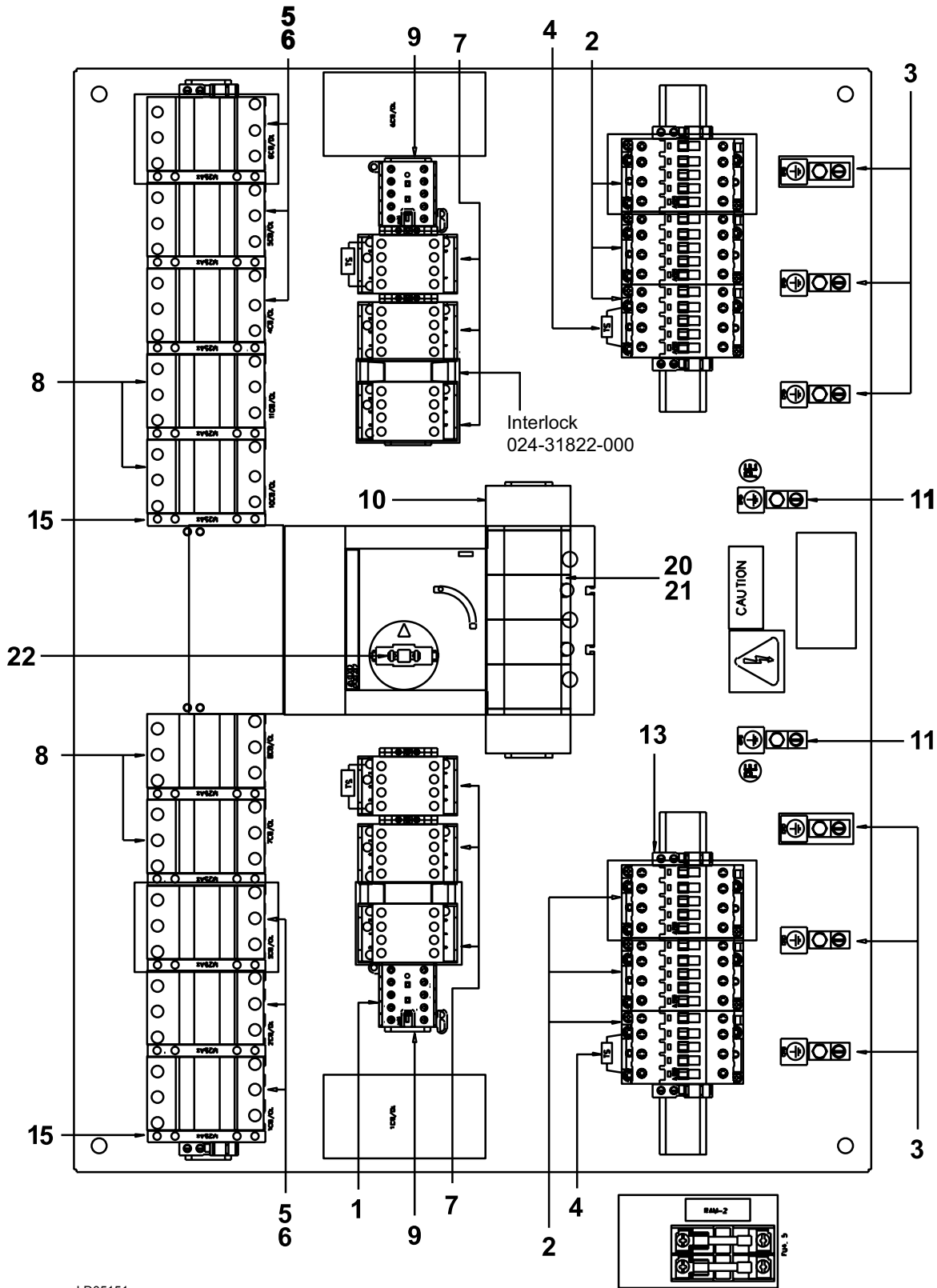


FIG. 11 – POWER PANEL COMPONENTS - YCUL0076-YCUL0275 (REF. TABLE 6, PAGES 23-42)

## CONTROL PANEL AND POWER PANEL (CONT'D)

**TABLE 5 – CONTROL AND POWER PANEL IDENTIFIERS (TO IDENTIFY REPLACEMENT PART NUMBERS, SELECT PANEL IDENTIFIER NUMBER BELOW, THEN REFER TO THE HIGHLIGHTED ROW ON THE 'CONTROL AND POWER PANEL COMPONENTS' TABLE 6, PAGES 23-42 AND SEE FIGS. 7-11, PAGES 16-20)**

MODEL NUMBER	VOLTAGE CODE	POWER PANEL WITH TERMINAL BLOCK	POWER PANEL WITH SEPARATE SYSTEM CIRCUIT BREAKERS	POWER PANEL WITH SEPARATE SYSTEM NF DISCONNECT SWITCHES
		PANEL NUMBER	PANEL NUMBER	PANEL NUMBER
YCUL0016	-17	371-02753-101	371-02753-201	371-02753-201
	-28	-101	-202	-201
	-40	-103	-203	-303
	-46	-104	-204	-304
	-58	-106	-206	-306
YCUL0026	-17	371-02753-108	371-02753-208	371-02753-308
	-28	-108	-208	-309
	-40	-110	-210	-210
	-46	-111	-210	-210
	-58	-113	-213	-313
YCUL0030	-17	371-02753-115	371-02753-215	371-02753-315
	-28	-115	-215	-315
	-40	-117	-217	-217
	-46	-118	-218	-318
	-58	-120	-220	-220
YCUL0036	-17	371-02753-122	371-02753-222	371-02753-322
	-28	-115	-215	-315
	-40	-117	-217	-217
	-46	-118	-225	-325
	-58	-127	-220	-220
YCUL0040	-17	371-02753-129	371-02753-229	371-02753-329
	-28	-129	-230	-329
	-40	-131	-231	-231
	-46	-132	-232	-232
	-58	-134	-234	-334
YCUL0046	-17	371-02752-101	371-02752-201	371-02752-301
	-28	-102	-202	-301
	-40	-103	-203	-303
	-46	-104	-204	-304
	-58	-106	-206	-306
YCUL0056	-17	371-02752-108	371-02752-208	371-02752-308
	-28	-108	-209	-309
	-40	-110	-210	-310
	-46	-111	-211	-311
	-58	-127	-227	-227
YCUL0060	-17	371-02752-115	371-02752-215	371-02752-315
	-28	-115	-215	-315
	-40	-117	-217	-317
	-46	-118	-218	-318
	-58	-120	-220	-320
YCUL0066	-17	371-02752-122	371-02752-222	371-02752-322
	-28	-108	-208	-308
	-40	-110	-224	-310
	-46	-111	-211	-311
	-58	-127	-227	-327

## CONTROL PANEL AND POWER PANEL (CONT'D)

**TABLE 5 – CONTROL AND POWER PANEL IDENTIFIERS (TO IDENTIFY REPLACEMENT PART NUMBERS, SELECT PANEL IDENTIFIER NUMBER BELOW, THEN REFER TO THE HIGHLIGHTED ROW ON THE 'CONTROL AND POWER PANEL COMPONENTS' TABLE 6, PAGES 23-42 AND SEE FIGS. 7-11, PAGES 16-20)**

MODEL NUMBER	VOLTAGE CODE	POWER PANEL WITH TERMINAL BLOCK	POWER PANEL WITH SEPARATE SYSTEM CIRCUIT BREAKERS	POWER PANEL WITH SEPARATE SYSTEM NF DISCONNECT SWITCHES
		PANEL NUMBER	PANEL NUMBER	PANEL NUMBER
YCUL0076	-17	371-02751-101	371-02751-201	371-02751-301
	-28	-101	-201	-301
	-40	-103	-203	-303
	-46	-104	-204	-304
	-58	-106	-206	-306
YCUL0080	-17	371-02751-108	371-02751-208	371-02751-308
	-28	-109	-208	-308
	-40	-110	-210	-310
	-46	-111	-211	-311
	-58	-113	-213	-313
YCUL0086	-17	371-02751-115	371-02751-215	371-02751-315
	-28	-115	-215	-316
	-40	-117	-217	-317
	-46	-103	-218	-303
	-58	-120	-220	-320
YCUL0090	-17	371-02751-122	371-02751-222	371-02751-322
	-28	-122	-223	-322
	-40	-124	-224	-324
	-46	-110	-225	-310
	-58	-127	-227	-327

## CONTROL PANEL AND POWER PANEL (CONT'D)

**TABLE 6 – CONTROL PANEL AND POWER PANEL COMPONENTS (SEE FIGS. 7-11, PAGES 16-20)**

ITEM NO.	QTY	DESCRIPTION	371-02753 -101	371-02753 -103	371-02753 -104	371-02753 -106	371-02753 -108	371-02753 -110	371-02753 -111
1	1	Contactors 600V (CR 1 & 2)	024-31635-000	024-31635-000	024-31635-000	024-31635-000	024-31635-000	024-31635-000	024-31635-000
2	2	Compressor Contactor	024-31813-000	024-31817-000	024-31830-000	024-31830-000	024-31830-000	024-31817-000	024-31817-000
3	2	Ground Lug, Cu	025-34455-000	025-34455-000	025-34455-000	025-34455-000	025-34455-000	025-34455-000	025-34455-000
4	4	Surge Suppressor	031-00808-000	031-00808-000	031-00808-000	031-00808-000	031-00808-000	031-00808-000	031-00808-000
5	2	Compressor Manual Starter	N/A	N/A	N/A	N/A	N/A	N/A	N/A
6	2	Auxiliary Contactor	N/A	N/A	N/A	N/A	N/A	N/A	N/A
7 <sup>s</sup>	2	Fan Contactor	025-34445-000	025-34448-000	025-34448-000	025-34448-000	025-34445-000	025-34448-000	025-34448-000
8 <sup>s</sup>	2	Fan Manual Motor Starter	025-34446-000	025-34449-000	025-34449-000	025-34446-000	025-34446-000	025-34449-000	025-34449-000
9	2	Din Rail Slotted	025-29167-000	025-29167-000	025-29167-000	025-29167-000	025-29167-000	025-29167-000	025-29167-000
10	1	Ground Lug, Cu	025-34088-000	025-34088-000	025-34088-000	025-34088-000	025-34088-000	025-34088-000	025-34088-000
11 <sup>s</sup>	1	Circuit Board*	031-02050-001	031-02050-001	031-02050-001	031-02050-001	031-02050-001	031-02050-001	031-02050-001
12 <sup>s</sup>	1	Firmware EPROM**	031-02049-001	031-02049-001	031-02049-001	031-02049-001	031-02049-001	031-02049-001	031-02049-001
13	1	Control Transformer	025-30889-000	025-30889-000	025-30889-000	025-30889-000	025-30889-000	025-30889-000	025-30889-000
14	1	Fuse	025-34483-000	025-34483-000	025-34483-000	025-34483-000	025-34483-000	025-34483-000	025-34483-000
15	1	Buss	025-34484-000	025-34484-000	025-34484-000	025-34484-000	025-34484-000	025-34484-000	025-34484-000
16	1	Display	031-01110-000	031-01110-000	031-01110-000	031-01110-000	031-01110-000	031-01110-000	031-01110-000
17	1	Membrane, Keypad	024-27838-000	024-27838-000	024-27838-000	024-27838-000	024-27838-000	024-27838-000	024-27838-000
18	1	Switch, On/Off	024-25517-000	024-25517-000	024-25517-000	024-25517-000	024-25517-000	024-25517-000	024-25517-000
19	1	Assm Ribbon Cable	031-01109-211	031-01109-211	031-01109-211	031-01109-211	031-01109-211	031-01109-211	031-01109-211
20	2	Terminal Block, Fan	025-34447-000	025-34447-000	025-34447-000	025-34447-000	025-34447-000	025-34447-000	025-34447-000
	3	Terminal Block	025-34485-000	025-35644-000	025-35644-000	025-35644-000	025-34482-000	025-34485-000	025-35644-000
21	1	Circuit Breaker	N/A	N/A	N/A	N/A	N/A	N/A	N/A
	1	NF Disconnect Switch	N/A	N/A	N/A	N/A	N/A	N/A	N/A
22	1	Operator Mechanism	N/A	N/A	N/A	N/A	N/A	N/A	N/A
23	1	Lug Kit (Not Shown)	N/A	N/A	N/A	N/A	N/A	N/A	N/A
24	1	Battery Backup, RTC Chip	031-00955-000	031-00955-000	031-00955-000	031-00955-000	031-00955-000	031-00955-000	031-00955-000

<sup>s</sup> Recommended Spare Part

\* Circuit Board 031-01314-000 has been replaced by Circuit Board 031-02050-001.

\*\* It is recommended that Item 12 (EPROM) be replaced when Item 11 (Circuit Board) is replaced.



TABLE 6 (CONT'D) – CONTROL PANEL AND POWER PANEL COMPONENTS (SEE FIGS. 7-11, PAGES 16-20)

ITEM NO.	QTY	DESCRIPTION	371-02753 -113	371-02753 -115	371-02753 -117	371-02753 -118	371-02753 -120	371-02753 -122	371-02753 -127
1	1	Contactors 600V (CR 1 & 2)	024-31635-000	024-31635-000	024-31635-000	024-31635-000	024-31635-000	024-31635-000	024-31635-000
2	2	Compressor Contactor	024-31830-000	024-31602-000	024-31813-000	024-31818-000	024-31817-000	024-31640-000	024-31817-000
3	2	Ground Lug, Cu	025-34455-000	025-34455-000	025-34455-000	025-34455-000	025-34455-000	025-34455-000	025-34455-000
4	4	Surge Suppressor	031-00808-000	031-00808-000	031-00808-000	031-00808-000	031-00808-000	031-00808-000	031-00808-000
5	2	Compressor Manual Starter	N/A	025-34488-000	024-31816-000	025-34489-000	025-34486-000	025-34488-000	025-34486-000
6	2	Auxiliary Contactor	N/A	024-31814-000	024-31814-000	N/A	N/A	024-31814-000	N/A
7 <sup>s</sup>	2	Fan Contactor	025-34448-000	025-34445-000	025-34448-000	025-34448-000	025-34448-000	025-34445-000	025-34448-000
8 <sup>s</sup>	2	Fan Manual Motor Starter	025-34450-000	025-34446-000	025-34449-000	025-34449-000	025-34450-000	025-34446-000	025-34450-000
9	2	Din Rail Slotted	025-29167-000	025-29167-000	025-29167-000	025-29167-000	025-29167-000	025-29167-000	025-29167-000
10	1	Ground Lug, Cu	025-34088-000	025-34089-000	025-34089-000	025-34088-000	025-34088-000	025-34089-000	025-34088-000
11 <sup>s</sup>	1	Circuit Board*	031-02050-001	031-02050-001	031-02050-001	031-02050-001	031-02050-001	031-02050-001	031-02050-001
12 <sup>s</sup>	1	Firmware EPROM**	031-02049-001	031-02049-001	031-02049-001	031-02049-001	031-02049-001	031-02049-001	031-02049-001
13	1	Control Transformer	025-30889-000	025-30889-000	025-30889-000	025-30889-000	025-30889-000	025-30889-000	025-30889-000
14	1	Fuse	025-34483-000	025-34483-000	025-34483-000	025-34483-000	025-34483-000	025-34483-000	025-34483-000
15	1	Buss	025-34484-000	025-34484-000	025-34484-000	025-34484-000	025-34484-000	025-34484-000	025-34484-000
16	1	Display	031-01110-000	031-01110-000	031-01110-000	031-01110-000	031-01110-000	031-01110-000	031-01110-000
17	1	Membrane, Keypad	024-27838-000	024-27838-000	024-27838-000	024-27838-000	024-27838-000	024-27838-000	024-27838-000
18	1	Switch, On/Off	024-25517-000	024-25517-000	024-25517-000	024-25517-000	024-25517-000	024-25517-000	024-25517-000
19	1	Assm Ribbon Cable	031-01109-211	031-01109-211	031-01109-211	031-01109-211	031-01109-211	031-01109-211	031-01109-211
20	2	Terminal Block, Fan	025-34447-000	025-34447-000	025-34447-000	025-34447-000	025-34447-000	025-34447-000	025-34447-000
	3	Terminal Block	025-35644-000	025-34454-000	025-34485-000	025-34485-000	025-35644-000	025-34454-000	025-34485-000
21	1	Circuit Breaker	N/A	N/A	N/A	N/A	N/A	N/A	N/A
	1	NF Disconnect Switch	N/A	N/A	N/A	N/A	N/A	N/A	N/A
22	1	Handle, CB or NF Disc. Sw.	N/A	N/A	N/A	N/A	N/A	N/A	N/A
23	1	Lug Kit (Not Shown)	N/A	N/A	N/A	N/A	N/A	N/A	N/A
24	1	Battery Backup, RTC Chip	031-00955-000	031-00955-000	031-00955-000	031-00955-000	031-00955-000	031-00955-000	031-00955-000

<sup>s</sup> Recommended Spare Part

\* Circuit Board 031-01314-000 has been replaced by Circuit Board 031-02050-001.

\*\* It is recommended that Item 12 (EPROM) be replaced when Item 11 (Circuit Board) is replaced.

## CONTROL PANEL AND POWER PANEL (CONT'D)

## CONTROL PANEL AND POWER PANEL (CONT'D)

**TABLE 6 (CONT'D) – CONTROL PANEL AND POWER PANEL COMPONENTS (SEE FIGS. 7-11, PAGES 16-20)**

ITEM NO.	QTY	DESCRIPTION	371-02753 -129	371-02753 -131	371-02753 -132	371-02753 -134	371-02753 -201	371-02753 -202	371-02753 -203
1	1	Contactors 600V (CR 1 & 2)	024-31635-000	024-31635-000	024-31635-000	024-31635-000	024-31635-000	024-31635-000	024-31635-000
2	2	Compressor Contactor	024-31602-000	024-31813-000	024-31818-000	024-31817-000*	024-31813-000	024-31813-000	024-31817-000
3	2	Ground Lug, Cu	025-34455-000	025-34455-000	025-34455-000	025-34455-000	025-34455-000	025-34455-000	025-34455-000
4	4	Surge Suppressor	031-00808-000	031-00808-000	031-00808-000	031-00808-000	031-00808-000	031-00808-000	031-00808-000
5	2	Compressor Manual Starter	025-34488-000	024-31816-000	025-34489-000	025-34486-000	N/A	N/A	025-34489-000
6	2	Auxiliary Contactor	024-31814-000	024-31814-000	N/A	N/A	N/A	N/A	N/A
7 <sup>s</sup>	2	Fan Contactor	025-34445-000	025-34448-000	025-34448-000	025-34448-000	025-34445-000	025-34445-000	025-34448-000
8 <sup>s</sup>	2	Fan Manual Motor Starter	025-34446-000	025-34449-000	025-34449-000	025-34450-000	025-34446-000	025-34446-000	025-34449-000
9	2	Din Rail Slotted	025-29167-000	025-29167-000	025-29167-000	025-29167-000	025-29167-000	025-29167-000	025-29167-000
10	1	Ground Lug, Cu	025-34085-000	025-34088-000	025-34088-000	025-34088-000	025-34088-000	025-34088-000	025-34455-000
11 <sup>s</sup>	1	Circuit Board*	031-02050-001	031-02050-001	031-02050-001	031-02050-001	031-02050-001	031-02050-001	031-02050-001
12 <sup>s</sup>	1	Firmware EPROM**	031-02049-001	031-02049-001	031-02049-001	031-02049-001	031-02049-001	031-02049-001	031-02049-001
13	1	Control Transformer	025-30889-000	025-30889-000	025-30889-000	025-30889-000	025-30889-000	025-30889-000	025-30889-000
14	1	Fuse	025-34483-000	025-34483-000	025-34483-000	025-34483-000	025-34483-000	025-34483-000	025-34483-000
15	1	Buss	025-34484-000	025-34484-000	025-34484-000	025-34484-000	025-34484-000	025-34484-000	025-34484-000
16	1	Display	031-01110-000	031-01110-000	031-01110-000	031-01110-000	031-01110-000	031-01110-000	031-01110-000
17	1	Membrane, Keypad	024-27838-000	024-27838-000	024-27838-000	024-27838-000	024-27838-000	024-27838-000	024-27838-000
18	1	Switch, On/Off	024-25517-000	024-25517-000	024-25517-000	024-25517-000	024-25517-000	024-25517-000	024-25517-000
19	1	Assm Ribbon Cable	031-01109-211	031-01109-211	031-01109-211	031-01109-211	031-01109-211	031-01109-211	031-01109-211
20	2	Terminal Block, Fan	025-34447-000	025-34447-000	025-34447-000	025-34447-000	025-34447-000	025-34447-000	025-34447-000
	3	Terminal Block	025-34408-000	025-34482-000	025-34485-000	025-34485-000	N/A	N/A	N/A
21	1	Circuit Breaker	N/A	N/A	N/A	N/A	024-31843-000	024-31842-000	024-31838-000
	1	NF Disconnect Switch	N/A	N/A	N/A	N/A	N/A	N/A	N/A
22	1	Handle, CB or NF Disc. Sw.	N/A	N/A	N/A	N/A	025-34417-000	025-34417-000	025-34417-000
23	1	Lug Kit (Not Shown)	N/A	N/A	N/A	N/A	025-34478-000	025-34478-000	025-34477-000
24	1	Battery Backup, RTC Chip	031-00955-000	031-00955-000	031-00955-000	031-00955-000	031-00955-000	031-00955-000	031-00955-000

<sup>s</sup> Recommended Spare Part

\* Circuit Board 031-01314-000 has been replaced by Circuit Board 031-02050-001.

\*\* It is recommended that Item 12 (EPROM) be replaced when Item 11 (Circuit Board) is replaced.



TABLE 6 (CONT'D) – CONTROL PANEL AND POWER PANEL COMPONENTS (SEE FIGS. 7-11, PAGES 16-20)

ITEM NO.	QTY	DESCRIPTION	371-02753 -204	371-02753 -206	371-02753 -208	371-02753 -210	371-02753 -213	371-02753 -215	371-02753 -217
1	1	Contact 600V (CR 1 & 2)	024-31635-000	024-31635-000	024-31635-000	024-31635-000	024-31635-000	024-31635-000	024-31635-000
2	2	Compressor Contactor	024-31830-000	024-31830-000	024-31636-000	024-31817-000	024-31830-000	024-31602-000	024-31813-000
3	2	Ground Lug, Cu	025-34455-000	025-34455-000	025-34455-000	025-34455-000	025-34455-000	025-34455-000	025-34455-000
4	4	Surge Suppressor	031-00808-000	031-00808-000	031-00808-000	031-00808-000	031-00808-000	031-00808-000	031-00808-000
5	2	Compressor Manual Starter	N/A	N/A	N/A	N/A	N/A	025-34489-000	024-31816-000
6	2	Auxiliary Contactor	N/A	N/A	N/A	N/A	N/A	024-31814-000	024-31814-000
7 <sup>s</sup>	2	Fan Contactor	025-34448-000	025-34448-000	025-34445-000	025-34448-000	025-34448-000	025-34445-000	025-34448-000
8 <sup>s</sup>	2	Fan Manual Motor Starter	025-34449-000	025-34449-000	025-34446-000	025-34449-000	025-34450-000	025-34446-000	025-34449-000
9	2	Din Rail Slotted	025-29167-000	025-29167-000	025-29167-000	025-29167-000	025-29167-000	025-29167-000	025-29167-000
10	1	Ground Lug, Cu	025-34455-000	025-34455-000	025-34088-000	025-34455-000	025-34455-000	025-34088-000	025-34088-000
11 <sup>s</sup>	1	Circuit Board*	031-02050-001	031-02050-001	031-02050-001	031-02050-001	031-02050-001	031-02050-001	031-02050-001
12 <sup>s</sup>	1	Firmware EPROM**	031-02049-001	031-02049-001	031-02049-001	031-02049-001	031-02049-001	031-02049-001	031-02049-001
13	1	Control Transformer	025-30889-000	025-30889-000	025-30889-000	025-30889-000	025-30889-000	025-30889-000	025-30889-000
14	1	Fuse	025-34483-000	025-34483-000	025-34483-000	025-34483-000	025-34483-000	025-34483-000	025-34483-000
15	1	Buss	025-34484-000	025-34484-000	025-34484-000	025-34484-000	025-34484-000	025-34484-000	025-34484-000
16	1	Display	031-01110-000	031-01110-000	031-01110-000	031-01110-000	031-01110-000	031-01110-000	031-01110-000
17	1	Membrane, Keypad	024-27838-000	024-27838-000	024-27838-000	024-27838-000	024-27838-000	024-27838-000	024-27838-000
18	1	Switch, On/Off	024-25517-000	024-25517-000	024-25517-000	024-25517-000	024-25517-000	024-25517-000	024-25517-000
19	1	Assm Ribbon Cable	031-01109-211	031-01109-211	031-01109-211	031-01109-211	031-01109-211	031-01109-211	031-01109-211
20	2	Terminal Block, Fan	025-34447-000	025-34447-000	025-34447-000	025-34447-000	025-34447-000	025-34447-000	025-34447-000
	3	Terminal Block	N/A	N/A	N/A	N/A	N/A	N/A	N/A
21	1	Circuit Breaker	024-31837-000	024-31852-000	024-31844-000	024-31889-000	024-31838-000	024-31649-000	024-31843-000
	1	NF Disconnect Switch	N/A	N/A	N/A	N/A	N/A	N/A	N/A
22	1	Operator Mechanism	025-34417-000	025-34417-000	025-34417-000	025-34417-000	025-34417-000	025-34417-000	025-34417-000
23	1	Lug Kit (Not Shown)	025-34477-000	025-34477-000	025-34479-000	025-34477-000	025-34477-000	025-34479-000	025-34478-000
24	1	Battery Backup, RTC Chip	031-00955-000	031-00955-000	031-00955-000	031-00955-000	031-00955-000	031-00955-000	031-00955-000

<sup>s</sup> Recommended Spare Part

\* Circuit Board 031-01314-000 has been replaced by Circuit Board 031-02050-001.

\*\* It is recommended that item 12 (EPROM) be replaced when item 11 (Circuit Board) is replaced.

## CONTROL PANEL AND POWER PANEL (CONT'D)

## CONTROL PANEL AND POWER PANEL (CONT'D)

**TABLE 6 (CONT'D) – CONTROL PANEL AND POWER PANEL COMPONENTS (SEE FIGS. 7-11, PAGES 16-20)**

ITEM NO.	QTY	DESCRIPTION	371-02753 -218	371-02753 -220	371-02753 -222	371-02753 -225	371-02753 -229	371-02753 -230	371-02753 -231
1	1	Contactors 600V (CR 1 & 2)	024-31635-000	024-31635-000	024-31635-000	024-31635-000	024-31635-000	024-31635-000	024-31635-000
2	2	Compressor Contactor	024-31818-000	024-31817-000	024-31640-000	024-31818-000	024-31602-000	024-31602-000	024-31813-000*
3	2	Ground Lug, Cu	025-34455-000	025-34455-000	025-34455-000	025-34455-000	025-34455-000	025-34455-000	025-34455-000
4	4	Surge Suppressor	031-00808-000	031-00808-000	031-00808-000	031-00808-000	031-00808-000	031-00808-000	031-00808-000
5	2	Compressor Manual Starter	025-34489-000	025-34456-000	025-34488-000	025-34489-000	025-34488-000	025-34488-000	024-31816-000
6	2	Auxiliary Contactor	N/A	N/A	024-31814-000	N/A	024-31814-000	024-31814-000	024-31814-000
7 <sup>s</sup>	2	Fan Contactor	025-34448-000	025-34448-000	025-34445-000	025-34448-000	025-34445-000	025-34445-000	025-34448-000
8 <sup>s</sup>	2	Fan Manual Motor Starter	025-34449-000	025-34450-000	025-34446-000	025-34449-000	025-34446-000	025-34446-000	025-34449-000
9	2	Din Rail Slotted	025-29167-000	025-29167-000	025-29167-000	025-29167-000	025-29167-000	025-29167-000	025-29167-000
10	1	Ground Lug, Cu	025-34088-000	025-34455-000	025-34089-000	025-34088-000	025-34085-000	025-34455-000	025-34088-000
11 <sup>s</sup>	1	Circuit Board*	031-02050-001	031-02050-001	031-02050-001	031-02050-001	031-02050-001	031-02050-001	031-02050-001
12 <sup>s</sup>	1	Firmware EPROM**	031-02049-001	031-02049-001	031-02049-001	031-02049-001	031-02049-001	031-02049-001	031-02049-001
13	1	Control Transformer	025-30889-000	025-30889-000	025-30889-000	025-30889-000	025-30889-000	025-30889-000	025-30889-000
14	1	Fuse	025-34483-000	025-34483-000	025-34483-000	025-34483-000	025-34483-000	025-34483-000	025-34483-000
15	1	Buss	025-34484-000	025-34484-000	025-34484-000	025-34484-000	025-34484-000	025-34484-000	025-34484-000
16	1	Display	031-01110-000	031-01110-000	031-01110-000	031-01110-000	031-01110-000	031-01110-000	031-01110-000
17	1	Membrane, Keypad	024-27838-000	024-27838-000	024-27838-000	024-27838-000	024-27838-000	024-27838-000	024-27838-000
18	1	Switch, On/Off	024-25517-000	024-25517-000	024-25517-000	024-25517-000	024-25517-000	024-25517-000	024-25517-000
19	1	Assm Ribbon Cable	031-01109-211	031-01109-211	031-01109-211	031-01109-211	031-01109-211	031-01109-211	031-01109-211
20	2	Terminal Block, Fan	025-34447-000	025-34447-000	025-34447-000	025-34447-000	025-34447-000	025-34447-000	025-34447-000
	3	Terminal Block	N/A	N/A	N/A	N/A	N/A	N/A	N/A
21	1	Circuit Breaker	024-31480-000	024-31839-000	024-31820-000	024-31841-000	024-31819-000	024-31851-000	024-31844-000
	1	NF Disconnect Switch	N/A	N/A	N/A	N/A	N/A	N/A	N/A
22	1	Operator Mechanism	025-34417-000	025-34417-000	025-34417-000	025-34417-000	025-34417-000	025-34417-000	025-34417-000
23	1	Lug Kit (Not Shown)	025-34478-000	025-34477-000	025-34480-000	025-34478-000	025-34480-000	025-34480-000	025-34479-000
24	1	Battery Backup, RTC Chip	031-00955-000	031-00955-000	031-00955-000	031-00955-000	031-00955-000	031-00955-000	031-00955-000

<sup>s</sup> Recommended Spare Part

\* Circuit Board 031-01314-000 has been replaced by Circuit Board 031-02050-001.

\*\* It is recommended that Item 12 (EPROM) be replaced when Item 11 (Circuit Board) is replaced.



TABLE 6 (CONT'D) – CONTROL PANEL AND POWER PANEL COMPONENTS (SEE FIGS. 7-11, PAGES 16-20)

ITEM NO.	QTY	DESCRIPTION	371-02753 -232	371-02753 -234	371-02753 -303	371-02753 -304	371-02753 -306	371-02753 -308	371-02753 -309
1	1	Contactors 600V (CR 1 & 2)	024-31635-000	024-31635-000	024-31635-000	024-31635-000	024-31635-000	024-31635-000	024-31635-000
2	2	Compressor Contactor	024-31818-000	024-31817-000	024-31817-000	024-31830-000	024-31830-000	024-31636-000	024-31636-000
3	2	Ground Lug, Cu	025-34455-000	025-34455-000	025-34455-000	025-34455-000	025-34455-000	025-34455-000	025-34455-000
4	4	Surge Suppressor	031-00808-000	031-00808-000	031-00808-000	031-00808-000	031-00808-000	031-00808-000	031-00808-000
5	2	Compressor Manual Starter	025-34489-000	025-34486-000	N/A	025-34489-000	N/A	N/A	N/A
6	2	Auxiliary Contactor	N/A	N/A	N/A	N/A	N/A	N/A	N/A
7 <sup>s</sup>	2	Fan Contactor	025-34448-000	025-34448-000	025-34448-000	025-34448-000	025-34448-000	025-34445-000	025-34445-000
8 <sup>s</sup>	2	Fan Manual Motor Starter	025-34449-000	025-34450-000	025-34449-000	025-34449-000	025-34450-000	025-34446-000	025-34446-000
9	2	Din Rail Slotted	025-29167-000	025-29167-000	025-29167-000	025-29167-000	025-29167-000	025-29167-000	025-29167-000
10	1	Ground Lug, Cu	025-34088-000	025-34088-000	025-34455-000	025-34455-000	025-34455-000	025-34089-000	025-34088-000
11 <sup>s</sup>	1	Circuit Board*	031-02050-001	031-02050-001	031-02050-001	031-02050-001	031-02050-001	031-02050-001	031-02050-001
12 <sup>s</sup>	1	Firmware EPROM**	031-02049-001	031-02049-001	031-02049-001	031-02049-001	031-02049-001	031-02049-001	031-02049-001
13	1	Control Transformer	025-30889-000	025-30889-000	025-30889-000	025-30889-000	025-30889-000	025-30889-000	025-30889-000
14	1	Fuse	025-34483-000	025-34483-000	025-34483-000	025-34483-000	025-34483-000	025-34483-000	025-34483-000
15	1	Buss	025-34484-000	025-34484-000	025-34484-000	025-34484-000	025-34484-000	025-34484-000	025-34484-000
16	1	Display	031-01110-000	031-01110-000	031-01110-000	031-01110-000	031-01110-000	031-01110-000	031-01110-000
17	1	Membrane, Keypad	024-27838-000	024-27838-000	024-27838-000	024-27838-000	024-27838-000	024-27838-000	024-27838-000
18	1	Switch, On/Off	024-25517-000	024-25517-000	024-25517-000	024-25517-000	024-25517-000	024-25517-000	024-25517-000
19	1	Assm Ribbon Cable	031-01109-211	031-01109-211	031-01109-211	031-01109-211	031-01109-211	031-01109-211	031-01109-211
20	2	Terminal Block, Fan	025-34447-000	025-34447-000	025-34447-000	025-34447-000	025-34447-000	025-34447-000	025-34447-000
	3	Terminal Block	N/A	N/A	N/A	N/A	N/A	N/A	N/A
21	1	Circuit Breaker	024-31843-000	024-31841-000	024-31839-000	024-31839-000	024-31839-000	N/A	024-31843-000
	1	NF Disconnect Switch	N/A	N/A	N/A	N/A	N/A	024-31888-000	N/A
22	1	Operator Mechanism	025-34417-000	025-34417-000	025-34417-000	025-34417-000	025-34417-000	025-34417-000	025-34417-000
23	1	Lug Kit (Not Shown)	025-34478-000	025-34478-000	025-34477-000	025-34477-000	025-34477-000	025-34479-000	025-34478-000
24	1	Battery Backup, RTC Chip	031-00955-000	031-00955-000	031-00955-000	031-00955-000	031-00955-000	031-00955-000	031-00955-000

<sup>s</sup> Recommended Spare Part

\* Circuit Board 031-01314-000 has been replaced by Circuit Board 031-02050-001.

\*\* It is recommended that Item 12 (EPROM) be replaced when Item 11 (Circuit Board) is replaced.

## CONTROL PANEL AND POWER PANEL (CONT'D)

## CONTROL PANEL AND POWER PANEL (CONT'D)

**TABLE 6 (CONT'D) – CONTROL PANEL AND POWER PANEL COMPONENTS (SEE FIGS. 7-11, PAGES 16-20)**

ITEM NO.	QTY	DESCRIPTION	371-02753 -313	371-02753 -315	371-02753 -318	371-02753 -322	371-02753 -325	371-02753 -329	371-02753 -334
1	1	Contact 600V (CR 1 & 2)	024-31635-000	024-31635-000	024-31635-000	024-31635-000	024-31635-000	024-31635-000	024-31635-000
2	2	Compressor Contactor	024-31830-000	024-31602-000	024-31818-000	024-31640-000	024-31818-000	024-31602-000*	024-31817-000*
3	2	Ground Lug, Cu	025-34455-000	025-34455-000	025-34455-000	025-34455-000	025-34455-000	025-34455-000	025-34455-000
4	4	Surge Suppressor	031-00808-000	031-00808-000	031-00808-000	031-00808-000	031-00808-000	031-00808-000	031-00808-000
5	2	Compressor Manual Starter	N/A	025-34488-000	025-34489-000	025-34488-000	025-34488-000	025-34488-000	025-34486-000
6	2	Auxiliary Contactor	N/A	024-31814-000	N/A	024-31814-000	N/A	024-31814-000	N/A
7 <sup>s</sup>	2	Fan Contactor	025-34448-000	025-34445-000	025-34448-000	025-34445-000	025-34448-000	025-34445-000	025-34448-000
8 <sup>s</sup>	2	Fan Manual Motor Starter	025-34450-000	025-34446-000	025-34449-000	025-34446-000	025-34449-000	025-34446-000	025-34450-000
9	2	Din Rail Slotted	025-29167-000	025-29167-000	025-29167-000	025-29167-000	025-29167-000	025-29167-000	025-29167-000
10	1	Ground Lug, Cu	025-34455-000	025-34089-000	025-34455-000	025-34089-000	025-34088-000	025-34455-000	025-34088-000
11 <sup>s</sup>	1	Circuit Board*	031-02050-001	031-02050-001	031-02050-001	031-02050-001	031-02050-001	031-02050-001	031-02050-001
12 <sup>s</sup>	1	Firmware EPROM**	031-02049-001	031-02049-001	031-02049-001	031-02049-001	031-02049-001	031-02049-001	031-02049-001
13	1	Control Transformer	025-30889-000	025-30889-000	025-30889-000	025-30889-000	025-30889-000	025-30889-000	025-30889-000
14	1	Fuse	025-34483-000	025-34483-000	025-34483-000	025-34483-000	025-34483-000	025-34483-000	025-34483-000
15	1	Buss	025-34484-000	025-34484-000	025-34484-000	025-34484-000	025-34484-000	025-34484-000	025-34484-000
16	1	Display	031-01110-000	031-01110-000	031-01110-000	031-01110-000	031-01110-000	031-01110-000	031-01110-000
17	1	Membrane, Keypad	024-27838-000	024-27838-000	024-27838-000	024-27838-000	024-27838-000	024-27838-000	024-27838-000
18	1	Switch, On/Off	024-25517-000	024-25517-000	024-25517-000	024-25517-000	024-25517-000	024-25517-000	024-25517-000
19	1	Assm Ribbon Cable	031-01109-211	031-01109-211	031-01109-211	031-01109-211	031-01109-211	031-01109-211	031-01109-211
20	2	Terminal Block, Fan	025-34447-000	025-34447-000	025-34447-000	025-34447-000	025-34447-000	025-34447-000	025-34447-000
	3	Terminal Block	N/A	N/A	N/A	N/A	N/A	N/A	N/A
21	1	Circuit Breaker	024-31839-000	N/A	024-31839-000	N/A	024-31843-000	N/A	024-31843-000
	1	NF Disconnect Switch	N/A	024-31871-000	N/A	024-31871-000	N/A	024-31871-000	N/A
22	1	Operator Mechanism	025-34417-000	025-34417-000	025-34417-000	025-34417-000	025-34417-000	025-34417-000	025-34417-000
23	1	Lug Kit (Not Shown)	025-34477-000	025-34480-000	025-34477-000	025-34480-000	025-34478-000	025-34480-000	025-34480-000
24	1	Battery Backup, RTC Chip	031-00955-000	031-00955-000	031-00955-000	031-00955-000	031-00955-000	031-00955-000	031-00955-000

<sup>s</sup> Recommended Spare Part

\* Circuit Board 031-01314-000 has been replaced by Circuit Board 031-02050-001.

\*\* It is recommended that Item 12 (EPROM) be replaced when Item 11 (Circuit Board) is replaced.



TABLE 6 (CONT'D) – CONTROL PANEL AND POWER PANEL COMPONENTS (SEE FIGS. 7-11, PAGES 16-20)

ITEM NO.	QTY	DESCRIPTION	371-02752 -101	371-02752 -102	371-02752 -103	371-02752 -104	371-02752 -106	371-02752 -108	371-02752 -110
1	2	Contactors 600V (CR 1 & 2)	024-31635-000	024-31635-000	024-31635-000	024-31635-000	024-31635-000	024-31635-000	024-31635-000
2	2	Compressor Contactor	024-31813-000	024-31813-000	024-31817-000	024-31817-000	024-31830-000	024-31602-000	024-31813-000
	2		024-31813-000	024-31813-000	024-31817-000	024-31817-000	024-31830-000	024-31602-000	024-31813-000
3	4	Ground Lug, Cu	025-34455-000	025-34455-000	025-34455-000	025-34455-000	025-34455-000	025-34455-000	025-34455-000
4	8	Surge Suppressor	031-00808-000	031-00808-000	031-00808-000	031-00808-000	031-00808-000	031-00808-000	031-00808-000
5	2	Compressor Manual Starter	024-31816-000	025-34453-000	025-34486-000	025-34453-000	024-31859-000	025-34488-000	024-31816-000
	2		024-31816-000	024-31816-000	025-34486-000	025-34453-000	024-31859-000	025-34488-000	024-31816-000
6	2	Auxiliary Contactor	024-31814-000	024-31814-000	024-31814-000	N/A	N/A	024-31814-000	024-31814-000
7 <sup>s</sup>	4	Fan Contactor	025-34445-000	025-34445-000	025-34448-000	025-34448-000	025-34448-000	025-34445-000	025-34448-000
8 <sup>s</sup>	4	Fan Manual Motor Starter	025-34446-000	025-34446-000	025-34449-000	025-34449-000	025-34450-000	025-34446-000	025-34449-000
9	2	Din Rail Slotted	025-29167-000	025-29167-000	025-29167-000	025-29167-000	025-29167-000	025-29167-000	025-29167-000
10	2	Ground Lug, Cu	025-34088-000	025-34088-000	025-34088-000	025-34088-000	025-34088-000	025-34089-000	025-34088-000
11 <sup>s</sup>	1	Circuit Board*	031-02050-001	031-02050-001	031-02050-001	031-02050-001	031-02050-001	031-02050-001	031-02050-001
12 <sup>s</sup>	1	Firmware EPROM**	031-02049-001	031-02049-001	031-02049-001	031-02049-001	031-02049-001	031-02049-001	031-02049-001
13	1	Control Transformer	025-30889-000	025-30889-000	025-30889-000	025-30889-000	025-30889-000	025-30889-000	025-30889-000
14	1	Fuse	025-34483-000	025-34483-000	025-34483-000	025-34483-000	025-34483-000	025-34483-000	025-34483-000
15	1	Buss	025-34484-000	025-34484-000	025-34484-000	025-34484-000	025-34484-000	025-34484-000	025-34484-000
16	1	Display	031-01110-000	031-01110-000	031-01110-000	031-01110-000	031-01110-000	031-01110-000	031-01110-000
17	1	Membrane, Keypad	024-27838-000	024-27838-000	024-27838-000	024-27838-000	024-27838-000	024-27838-000	024-27838-000
18	1	Switch, On/Off	024-25517-000	024-25517-000	024-25517-000	024-25517-000	024-25517-000	024-25517-000	024-25517-000
19	1	Assm Ribbon Cable	031-01109-211	031-01109-211	031-01109-211	031-01109-211	031-01109-211	031-01109-211	031-01109-211
20	4	Terminal Block, Fan	025-34447-000	025-34447-000	025-34447-000	025-34447-000	025-34447-000	025-34447-000	025-34447-000
	3	Terminal Block	025-34482-000	025-34485-000	025-34485-000	025-34485-000	025-35644-000	025-34454-000	025-34485-000
21	3		025-34482-000	025-34485-000	025-34485-000	025-34485-000	025-35644-000	025-34454-000	025-34485-000
	1	Circuit Breaker	N/A	N/A	N/A	N/A	N/A	N/A	N/A
	1	NF Disconnect Switch	N/A	N/A	N/A	N/A	N/A	N/A	N/A
22	1	Operator Mechanism	N/A	N/A	N/A	N/A	N/A	N/A	N/A
23	1	Lug Kit (Not Shown)	N/A	N/A	N/A	N/A	N/A	N/A	N/A
24	1	Battery Backup, RTC Chip	031-00955-000	031-00955-000	031-00955-000	031-00955-000	031-00955-000	031-00955-000	031-00955-000

<sup>s</sup> Recommended Spare Part

\* Circuit Board 031-01314-000 has been replaced by Circuit Board 031-02050-001.

\*\* It is recommended that Item 12 (EPROM) be replaced when Item 11 (Circuit Board) is replaced.

## CONTROL PANEL AND POWER PANEL (CONT'D)

## CONTROL PANEL AND POWER PANEL (CONT'D)

**TABLE 6 (CONT'D) – CONTROL PANEL AND POWER PANEL COMPONENTS (SEE FIGS. 7-11, PAGES 16-20)**

ITEM NO.	QTY	DESCRIPTION	371-02752 -111	371-02752 -115	371-02752 -117	371-02752 -118	371-02752 -120	371-02752 -122	371-02752 -127
1	2	Contact 600V (CR 1 & 2)	024-31635-000	024-31635-000	024-31635-000	024-31635-000	024-31635-000	024-31635-000	024-31635-000
2	2	Compressor Contactor	024-31818-000	024-31602-000	024-31813-000	024-31818-000	024-31817-000	024-31640-000	024-31817-000
	2		024-31818-000	024-31640-000	024-31636-000	024-31813-000	024-31818-000	024-31813-000	024-31817-000
3	4	Ground Lug, Cu	025-34455-000	025-34455-000	025-34455-000	025-34455-000	025-34455-000	025-34455-000	025-34455-000
4	8	Surge Suppressor	031-00808-000	031-00808-000	031-00808-000	031-00808-000	031-00808-000	031-00808-000	031-00808-000
5	2	Compressor Manual Starter	025-34489-000	025-34488-000	024-31816-000	025-34489-000	025-34486-000	025-34488-000	025-34486-000
	2		025-34489-000	025-34488-000	024-31816-000	025-34489-000	025-34488-000	025-34488-000	025-34486-000
6	2	Auxiliary Contactor	N/A	024-31814-000	024-31814-000	024-31814-000	N/A	024-31814-000	N/A
7 <sup>s</sup>	4	Fan Contactor	025-34448-000	025-34445-000	025-34448-000	025-34448-000	025-34448-000	025-34445-000	025-34448-000
8 <sup>s</sup>	4	Fan Manual Motor Starter	025-34449-000	025-34446-000	025-34449-000	025-34449-000	025-34445-000	025-34446-000	025-34450-000
9	2	Din Rail Slotted	025-29167-000	025-29167-000	025-29167-000	025-29167-000	025-29167-000	025-29167-000	025-29167-000
10	2	Ground Lug, Cu	025-34088-000	025-34089-000	025-34088-000	025-34088-000	025-34089-000	025-34089-000	025-34088-000
11 <sup>s</sup>	1	Circuit Board*	031-02050-001	031-02050-001	031-02050-001	031-02050-001	031-02050-001	031-02050-001	031-02050-001
12 <sup>s</sup>	1	Firmware EPROM**	031-02049-001	031-02049-001	031-02049-001	031-02049-001	031-02049-001	031-02049-001	031-02049-001
13	1	Control Transformer	025-30889-000	025-30889-000	025-30889-000	025-30889-000	025-30889-000	025-30889-000	025-30889-000
14	1	Fuse	025-34483-000	025-34483-000	025-34483-000	025-34483-000	025-34483-000	025-34483-000	025-34483-000
15	1	Buss	025-34484-000	025-34484-000	025-34484-000	025-34484-000	025-34484-000	025-34484-000	025-34484-000
16	1	Display	031-01110-000	031-01110-000	031-01110-000	031-01110-000	031-01110-000	031-01110-000	031-01110-000
17	1	Membrane, Keypad	024-27838-000	024-27838-000	024-27838-000	024-27838-000	024-27838-000	024-27838-000	024-27838-000
18	1	Switch, On/Off	024-25517-000	024-25517-000	024-25517-000	024-25517-000	024-25517-000	024-25517-000	024-25517-000
19	1	Assm Ribbon Cable	031-01109-211	031-01109-211	031-01109-211	031-01109-211	031-01109-211	031-01109-211	031-01109-211
20	4	Terminal Block, Fan	025-34447-000	025-34447-000	025-34447-000	025-34447-000	025-34447-000	025-34447-000	025-34447-000
	3		025-34485-000	025-34454-000	025-34485-000	025-34485-000	025-34485-000	025-34454-000	025-34485-000
21	3	Terminal Block	025-34485-000	025-34454-000	025-34485-000	025-34485-000	025-34485-000	025-34454-000	025-34485-000
	3		025-34485-000	025-34454-000	025-34485-000	025-34485-000	025-34485-000	025-34454-000	025-34485-000
22	1	Circuit Breaker	N/A	N/A	N/A	N/A	N/A	N/A	N/A
	1		N/A	N/A	N/A	N/A	N/A	N/A	N/A
23	1	NF Disconnect Switch	N/A	N/A	N/A	N/A	N/A	N/A	N/A
	1		N/A	N/A	N/A	N/A	N/A	N/A	N/A
24	1	Operator Mechanism	N/A	N/A	N/A	N/A	N/A	N/A	N/A
	1		N/A	N/A	N/A	N/A	N/A	N/A	N/A
24	1	Lug Kit (Not Shown)	N/A	N/A	N/A	N/A	N/A	N/A	N/A
	1		N/A	N/A	N/A	N/A	N/A	N/A	N/A
24	1	Battery Backup, RTC Chip	031-00955-000	031-00955-000	031-00955-000	031-00955-000	031-00955-000	031-00955-000	031-00955-000
	1		031-00955-000	031-00955-000	031-00955-000	031-00955-000	031-00955-000	031-00955-000	031-00955-000

<sup>s</sup> Recommended Spare Part

\* Circuit Board 031-01314-000 has been replaced by Circuit Board 031-02050-001.

\*\* It is recommended that Item 12 (EPROM) be replaced when Item 11 (Circuit Board) is replaced.



TABLE 6 (CONT'D) – CONTROL PANEL AND POWER PANEL COMPONENTS (SEE FIGS. 7-11, PAGES 16-20)

ITEM NO.	QTY	DESCRIPTION	371-02752 -201	371-02752 -202	371-02752 -203	371-02752 -204	371-02752 -206	371-02752 -208	371-02752 -209
1	2	Contactors 600V (CR 1 & 2)	024-31635-000	024-31635-000	024-31635-000	024-31635-000	024-31635-000	024-31635-000	024-31635-000
2	2	Compressor Contactor	024-31813-000	024-31813-000	024-31817-000	024-31817-000	024-31830-000	024-31602-000	024-31602-000
3	4	Ground Lug, Cu	024-31813-000	024-31813-000	024-31817-000	024-31817-000	024-31830-000	024-31602-000	024-31620-000
4	8	Surge Suppressor	025-34455-000	025-34455-000	025-34455-000	025-34455-000	025-34455-000	025-34455-000	025-34455-000
5	2	Compressor Manual Starter	031-00808-000	031-00808-000	031-00808-000	031-00808-000	031-00808-000	031-00808-000	031-00808-000
6	2	Auxiliary Contactor	024-31816-000	024-31816-000	025-34486-000	025-34453-000	024-31859-000	025-34488-000	025-34488-000
7 <sup>s</sup>	4	Fan Contactor	024-31814-000	024-31814-000	N/A	N/A	N/A	024-31814-000	024-31814-000
8 <sup>s</sup>	4	Fan Manual Motor Starter	025-34445-000	025-34445-000	025-34448-000	025-34448-000	025-34448-000	025-34445-000	025-34445-000
9	2	Din Rail Slotted	025-34446-000	025-34446-000	025-34449-000	025-34450-000	025-34450-000	025-34446-000	025-34446-000
10	2	Ground Lug, Cu	025-29167-000	025-29167-000	025-29167-000	025-29167-000	025-29167-000	025-29167-000	025-29167-000
11 <sup>s</sup>	1	Circuit Board*	025-34085-000	025-34089-000	025-34088-000	025-34088-000	025-34088-000	025-34089-000	025-34085-000
12 <sup>s</sup>	1	Firmware EPROM**	031-02050-001	031-02050-001	031-02050-001	031-02050-001	031-02050-001	031-02050-001	031-02050-001
13	1	Control Transformer	031-02049-001	031-02049-001	031-02049-001	031-02049-001	031-02049-001	031-02049-001	031-02049-001
14	1	Fuse	025-30889-000	025-30889-000	025-30889-000	025-30889-000	025-30889-000	025-30889-000	025-30889-000
15	1	Buss	025-34483-000	025-34483-000	025-34483-000	025-34483-000	025-34483-000	025-34483-000	025-34483-000
16	1	Display	025-34484-000	025-34484-000	025-34484-000	025-34484-000	025-34484-000	025-34484-000	025-34484-000
17	1	Membrane, Keypad	031-01110-000	031-01110-000	031-01110-000	031-01110-000	031-01110-000	031-01110-000	031-01110-000
18	1	Switch, On/Off	024-27838-000	024-27838-000	024-27838-000	024-27838-000	024-27838-000	024-27838-000	024-27838-000
19	1	Assm Ribbon Cable	024-25517-000	024-25517-000	024-25517-000	024-25517-000	024-25517-000	024-25517-000	024-25517-000
20	4	Terminal Block, Fan	031-01109-211	031-01109-211	031-01109-211	031-01109-211	031-01109-211	031-01109-211	031-01109-211
21	3	Terminal Block	025-34447-000	025-34447-000	025-34447-000	025-34447-000	025-34447-000	025-34447-000	025-34447-000
22	1	Operator Mechanism	N/A	N/A	N/A	N/A	N/A	N/A	N/A
23	1	Lug Kit	N/A	N/A	N/A	N/A	N/A	N/A	N/A
24	1	Battery Backup, RTC Chip	024-31851-000	024-31820-000	024-31844-000	024-31842-000	024-31840-000	025-34424-000	025-34419-000
			N/A	N/A	N/A	N/A	N/A	N/A	N/A
			N/A	N/A	N/A	N/A	N/A	N/A	N/A
			025-34417-000	025-34417-000	025-34417-000	025-34417-000	025-34417-000	025-34417-000	025-34417-000
			025-34480-000	025-34480-000	025-34479-000	025-34478-000	025-34478-000	025-34481-000	025-34418-000
			031-00955-000	031-00955-000	031-00955-000	031-00955-000	031-00955-000	031-00955-000	031-00955-000

<sup>s</sup> Recommended Spare Part

\* Circuit Board 031-01314-000 has been replaced by Circuit Board 031-02050-001.

\*\* It is recommended that Item 12 (EPROM) be replaced when Item 11 (Circuit Board) is replaced.

## CONTROL PANEL AND POWER PANEL (CONT'D)

## CONTROL PANEL AND POWER PANEL (CONT'D)

**TABLE 5 (CONT'D) – CONTROL PANEL AND POWER PANEL COMPONENTS (SEE FIGS. 7-11, PAGES 16-20)**

ITEM NO.	QTY	DESCRIPTION	371-02752 -210	371-02752 -211	371-02752 -215	371-02752 -217	371-02752 -218	371-02752 -220	371-02752 -222
1	2	Contact 600V (CR 1 & 2)	024-31635-000	024-31635-000	024-31635-000	024-31635-000	024-31635-000	024-31635-000	024-31635-000
2	2	Compressor Contactor	024-31813-000	024-31818-000	024-31602-000	024-31813-000	024-31818-000	024-31817-000	024-31640-000
	2		024-31813-000	024-31818-000	024-31640-000	024-31636-000	024-31813-000	024-31818-000	024-31640-000
3	4	Ground Lug, Cu	025-34455-000	025-34455-000	025-34455-000	025-34455-000	025-34455-000	025-34455-000	025-34455-000
4	8	Surge Suppressor	031-00808-000	031-00808-000	031-00808-000	031-00808-000	031-00808-000	031-00808-000	031-00808-000
5	2	Compressor Manual Starter	024-31816-000	025-34489-000	025-34488-000	024-31816-000	025-34489-000	025-34486-000	025-34488-000
	2		024-31816-000	025-34489-000	025-34488-000	024-31816-000	024-31816-000	025-34489-000	025-34488-000
6	2	Auxiliary Contactor	024-31814-000	N/A	024-31814-000	024-31814-000	024-31814-000	N/A	024-31814-000
7 <sup>s</sup>	4	Fan Contactor	025-34448-000	025-34448-000	025-34445-000	025-34448-000	025-34448-000	025-34448-000	025-34445-000
8 <sup>s</sup>	4	Fan Manual Motor Starter	025-34449-000	025-34449-000	025-34446-000	025-34449-000	025-34449-000	025-34450-000	025-34446-000
9	2	Din Rail Slotted	025-29167-000	025-29167-000	025-29167-000	025-29167-000	025-29167-000	025-29167-000	025-29167-000
10	2	Ground Lug, Cu	025-34089-000	025-34088-000	025-34089-000	025-34089-000	025-34088-000	025-34088-000	025-34089-000
11 <sup>s</sup>	1	Circuit Board*	031-02050-001	031-02050-001	031-02050-001	031-02050-001	031-02050-001	031-02050-001	031-02050-001
12 <sup>s</sup>	1	Firmware EPROM**	031-02049-001	031-02049-001	031-02049-001	031-02049-001	031-02049-001	031-02049-001	031-02049-001
13	1	Control Transformer	025-30889-000	025-30889-000	025-30889-000	025-30889-000	025-30889-000	025-30889-000	025-30889-000
14	1	Fuse	025-34483-000	025-34483-000	025-34483-000	025-34483-000	025-34483-000	025-34483-000	025-34483-000
15	1	Buss	025-34484-000	025-34484-000	025-34484-000	025-34484-000	025-34484-000	025-34484-000	025-34484-000
16	1	Display	031-01110-000	031-01110-000	031-01110-000	031-01110-000	031-01110-000	031-01110-000	031-01110-000
17	1	Membrane, Keypad	024-27838-000	024-27838-000	024-27838-000	024-27838-000	024-27838-000	024-27838-000	024-27838-000
18	1	Switch, On/Off	024-25517-000	024-25517-000	024-25517-000	024-25517-000	024-25517-000	024-25517-000	024-25517-000
19	1	Assm Ribbon Cable	031-01109-211	031-01109-211	031-01109-211	031-01109-211	031-01109-211	031-01109-211	031-01109-211
20	4	Terminal Block, Fan	025-34447-000	025-34447-000	025-34447-000	025-34447-000	025-34447-000	025-34447-000	025-34447-000
	3	Terminal Block	N/A	N/A	N/A	N/A	N/A	N/A	N/A
21	3		N/A	N/A	N/A	N/A	N/A	N/A	N/A
	1	Circuit Breaker	024-31649-000	024-31844-000	025-34424-000	024-31820-000	024-31844-000	024-31843-000	025-34424-000
	1	NF Disconnect Switch	N/A	N/A	N/A	N/A	N/A	N/A	N/A
22	1	Operator Mechanism	025-34417-000	025-34417-000	025-34417-000	025-34417-000	025-34417-000	025-34417-000	025-34417-000
23	1	Lug Kit	025-34479-000	025-34479-000	025-34481-000	025-34480-000	025-34479-000	025-34478-000	025-34481-000
24	1	Battery Backup, RTC Chip	031-00955-000	031-00955-000	031-00955-000	031-00955-000	031-00955-000	031-00955-000	031-00955-000

<sup>s</sup> Recommended Spare Part

\* Circuit Board 031-01314-000 has been replaced by Circuit Board 031-02050-001.

\*\* It is recommended that Item 12 (EPROM) be replaced when Item 11 (Circuit Board) is replaced.



TABLE 6 (CONT'D) – CONTROL PANEL AND POWER PANEL COMPONENTS (SEE FIGS. 7-11, PAGES 16-20)

ITEM NO.	QTY	DESCRIPTION	371-02752 -224	371-02752 -227	371-02752 -301	371-02752 -303	371-02752 -304	371-02752 -306	371-02752 -308
1	2	Contactors 600V (CR 1 & 2)	024-31635-000	024-31635-000	024-31635-000	024-31635-000	024-31635-000	024-31635-000	024-31635-000
2	2	Compressor Contactor	024-31813-000	024-31817-000	024-31813-000	024-31817-000	024-31817-000	024-31830-000	024-31602-000
	2		024-31813-000	024-31817-000	024-31813-000	024-31817-000	024-31817-000	024-31830-000	024-31602-000
3	4	Ground Lug, Cu	025-34455-000	025-34455-000	025-34455-000	025-34455-000	025-34455-000	025-34455-000	025-34455-000
4	8	Surge Suppressor	031-00808-000	031-00808-000	031-00808-000	031-00808-000	031-00808-000	031-00808-000	031-00808-000
5	2	Compressor Manual Starter	024-31816-000	025-34486-000	024-31816-000	025-34486-000	025-34453-000	024-31859-000	025-34488-000
	2		024-31816-000	025-34486-000	024-31816-000	025-34486-000	025-34453-000	024-31859-000	025-34488-000
6	2	Auxiliary Contactor	024-31814-000	N/A	024-31814-000	N/A	N/A	N/A	N/A
7 <sup>s</sup>	4	Fan Contactor	025-34448-000	025-34448-000	025-34445-000	025-34448-000	025-34448-000	025-34448-000	025-34445-000
8 <sup>s</sup>	4	Fan Manual Motor Starter	025-34449-000	025-34450-000	025-34446-000	025-34449-000	025-34449-000	025-34450-000	025-34446-000
9	2	Din Rail Slotted	025-29167-000	025-29167-000	025-29167-000	025-29167-000	025-29167-000	025-29167-000	025-29167-000
10	2	Ground Lug, Cu	025-34089-000	025-34088-000	025-34089-000	025-34089-000	025-34088-000	025-34088-000	025-34089-000
11 <sup>s</sup>	1	Circuit Board*	031-02050-001	031-02050-001	031-02050-001	031-02050-001	031-02050-001	031-02050-001	031-02050-001
12 <sup>s</sup>	1	Firmware EPROM**	031-02049-001	031-02049-001	031-02049-001	031-02049-001	031-02049-001	031-02049-001	031-02049-001
13	1	Control Transformer	025-30889-000	025-30889-000	025-30889-000	025-30889-000	025-30889-000	025-30889-000	025-30889-000
14	1	Fuse	025-34483-000	025-34483-000	025-34483-000	025-34483-000	025-34483-000	025-34483-000	025-34483-000
15	1	Buss	025-34484-000	025-34484-000	025-34484-000	025-34484-000	025-34484-000	025-34484-000	025-34484-000
16	1	Display	031-01110-000	031-01110-000	031-01110-000	031-01110-000	031-01110-000	031-01110-000	031-01110-000
17	1	Membrane, Keypad	024-27838-000	024-27838-000	024-27838-000	024-27838-000	024-27838-000	024-27838-000	024-27838-000
18	1	Switch, On/Off	024-25517-000	024-25517-000	024-25517-000	024-25517-000	024-25517-000	024-25517-000	024-25517-000
19	1	Assm Ribbon Cable	031-01109-211	031-01109-211	031-01109-211	031-01109-211	031-01109-211	031-01109-211	031-01109-211
20	4	Terminal Block, Fan	025-34447-000	025-34447-000	025-34447-000	025-34447-000	025-34447-000	025-34447-000	025-34447-000
	3	Terminal Block	N/A	N/A	N/A	N/A	N/A	N/A	N/A
21	3		N/A	N/A	N/A	N/A	N/A	N/A	N/A
	1	Circuit Breaker	024-31820-000	024-31843-000	024-31871-000	N/A	024-31843-000	024-31843-000	N/A
	1	NF Disconnect Switch	N/A	N/A	N/A	024-31888-000	N/A	N/A	024-25564-000
22	1	Operator Mechanism	025-34417-000	025-34417-000	025-34417-000	025-34417-000	025-34417-000	025-34417-000	025-34417-000
23	1	Lug Kit	025-34480-000	025-34478-000	025-34480-000	025-34479-000	025-34478-000	025-34478-000	025-34481-000
24	1	Battery Backup, RTC Chip	031-00955-000	031-00955-000	031-00955-000	031-00955-000	031-00955-000	031-00955-000	031-00955-000

<sup>s</sup> Recommended Spare Part

\* Circuit Board 031-01314-000 has been replaced by Circuit Board 031-02050-001.

\*\* It is recommended that Item 12 (EPROM) be replaced when Item 11 (Circuit Board) is replaced.

## CONTROL PANEL AND POWER PANEL (CONT'D)

## CONTROL PANEL AND POWER PANEL (CONT'D)

**TABLE 6 (CONT'D) – CONTROL PANEL AND POWER PANEL COMPONENTS (SEE FIGS. 7-11, PAGES 16-20)**

ITEM NO.	QTY	DESCRIPTION	371-02752 -309	371-02752 -310	371-02752 -311	371-02752 -315	371-02752 -317	371-02752 -318	371-02752 -320
1	2	Contact 600V (CR 1 & 2)	024-31635-000	024-31635-000	024-31635-000	024-31635-000	024-31635-000	024-31635-000	024-31635-000
2	2	Compressor Contactor	024-31602-000	024-31813-000	024-31818-000	024-31602-000	024-31813-000	024-31818-000	024-31817-000
	2		024-31602-000	024-31813-000	024-31818-000	024-31640-000	024-31636-000	024-31813-000	024-31818-000
3	4	Ground Lug, Cu	025-34455-000	025-34455-000	025-34455-000	025-34455-000	025-34455-000	025-34455-000	025-34455-000
4	8	Surge Suppressor	031-00808-000	031-00808-000	031-00808-000	031-00808-000	031-00808-000	031-00808-000	031-00808-000
5	2	Compressor Manual Starter	025-34488-000	024-31816-000	025-34489-000	025-34488-000	024-31816-000	025-34489-000	025-34486-000
	2		025-34488-000	024-31816-000	025-34489-000	025-34488-000	024-31816-000	024-31816-000	025-34489-000
6	2	Auxiliary Contactor	024-31814-000	024-31814-000	N/A	024-31814-000	024-31814-000	024-31814-000	N/A
7 <sup>s</sup>	4	Fan Contactor	025-34445-000	025-34448-000	025-34448-000	025-34445-000	025-34448-000	025-34448-000	025-34448-000
8 <sup>s</sup>	4	Fan Manual Motor Starter	025-34446-000	025-34449-000	025-34449-000	025-34446-000	025-34449-000	025-34449-000	025-34450-000
9	2	Din Rail Slotted	025-29167-000	025-29167-000	025-29167-000	025-29167-000	025-29167-000	025-29167-000	025-29167-000
10	2	Ground Lug, Cu	025-34085-000	025-34088-000	025-34089-000	025-34085-000	025-34085-000	025-34089-000	025-34089-000
11 <sup>s</sup>	1	Circuit Board*	031-02050-001	031-02050-001	031-02050-001	031-02050-001	031-02050-001	031-02050-001	031-02050-001
12 <sup>s</sup>	1	Firmware EPROM**	031-02049-001	031-02049-001	031-02049-001	031-02049-001	031-02049-001	031-02049-001	031-02049-001
13	1	Control Transformer	025-30889-000	025-30889-000	025-30889-000	025-30889-000	025-30889-000	025-30889-000	025-30889-000
14	1	Fuse	025-34483-000	025-34483-000	025-34483-000	025-34483-000	025-34483-000	025-34483-000	025-34483-000
15	1	Buss	025-34484-000	025-34484-000	025-34484-000	025-34484-000	025-34484-000	025-34484-000	025-34484-000
16	1	Display	031-01110-000	031-01110-000	031-01110-000	031-01110-000	031-01110-000	031-01110-000	031-01110-000
17	1	Membrane, Keypad	024-27838-000	024-27838-000	024-27838-000	024-27838-000	024-27838-000	024-27838-000	024-27838-000
18	1	Switch, On/Off	024-25517-000	024-25517-000	024-25517-000	024-25517-000	024-25517-000	024-25517-000	024-25517-000
19	1	Assm Ribbon Cable	031-01109-211	031-01109-211	031-01109-211	031-01109-211	031-01109-211	031-01109-211	031-01109-211
20	4	Terminal Block, Fan	025-34447-000	025-34447-000	025-34447-000	025-34447-000	025-34447-000	025-34447-000	025-34447-000
	3	Terminal Block	N/A	N/A	N/A	N/A	N/A	N/A	N/A
21	3		N/A	N/A	N/A	N/A	N/A	N/A	N/A
	1	Circuit Breaker	N/A	N/A	N/A	N/A	N/A	N/A	N/A
22	1	NF Disconnect Switch	024-25565-000	024-31870-000	024-31888-000	024-25564-000	024-31870-000	024-31888-000	024-31888-000
23	1	Operator Mechanism	025-34417-000	025-34417-000	025-34417-000	025-34417-000	025-34417-000	025-34417-000	025-34417-000
24	1	Battery Backup, RTC Chip	025-34418-000	025-34480-000	025-34479-000	025-34481-000	025-34480-000	025-34479-000	025-34479-000
	1		031-00955-000	031-00955-000	031-00955-000	031-00955-000	031-00955-000	031-00955-000	031-00955-000

<sup>s</sup> Recommended Spare Part

\* Circuit Board 031-01314-000 has been replaced by Circuit Board 031-02050-001.

\*\* It is recommended that Item 12 (EPROM) be replaced when Item 11 (Circuit Board) is replaced.



TABLE 6 (CONT'D) – CONTROL PANEL AND POWER PANEL COMPONENTS (SEE FIGS. 7-11, PAGES 16-20)

ITEM NO.	QTY	DESCRIPTION	371-02752 -322	371-02752 -327	371-02751 -101	371-02751 -103	371-02751 -104	371-02751 -106	371-02751 -108
1	2	Contact 600V (CR 1 & 2)	024-31635-000	024-31635-000	024-31635-000	024-31635-000	024-31635-000	024-31635-000	024-31635-000
2	2	Compressor Contactor	024-31640-000	024-31817-000	024-31636-000	024-31818-000	024-31817-000	024-31830-000	024-31602-000
	2		024-31640-000	024-31817-000	024-31602-000	024-31813-000	024-31818-000	024-31817-000	024-31602-000
3	4	Ground Lug, Cu	025-34455-000	025-34455-000	025-34455-000	025-34455-000	025-34455-000	025-34455-000	025-34455-000
4	8	Surge Suppressor	031-00808-000	031-00808-000	031-00808-000	031-00808-000	031-00808-000	031-00808-000	031-00808-000
5	2	Compressor Manual Starter	025-34488-000	025-34486-000	024-31816-000	025-34489-000	025-34489-000	024-31859-000	025-34488-000
	2		025-34488-000	025-34486-000	025-34488-000	024-31816-000	025-34453-000	025-34486-000	025-34488-000
6	2	Auxiliary Contactor	024-31814-000	N/A	024-31814-000	024-31814-000	N/A	N/A	024-31814-000
7 <sup>s</sup>	4	Fan Contactor	025-34445-000	025-34448-000	025-34445-000	025-34448-000	025-34448-000	025-34448-000	025-34445-000
8 <sup>s</sup>	4	Fan Manual Motor Starter	025-34446-000	025-34450-000	025-34446-000	025-34449-000	025-34449-000	025-34450-000	025-34446-000
9	2	Din Rail Slotted	025-29167-000	025-29167-000	025-29167-000	025-29167-000	025-29167-000	025-29167-000	025-29167-000
10	2	Ground Lug, Cu	025-34089-000	025-34089-000	025-34085-000	025-34088-000	025-34088-000	025-34088-000	025-34088-000
11 <sup>s</sup>	1	Circuit Board*	031-02050-001	031-02050-001	031-02050-001	031-02050-001	031-02050-001	031-02050-001	031-02050-001
12 <sup>s</sup>	1	Firmware EPROM**	031-02049-001	031-02049-001	031-02049-001	031-02049-001	031-02049-001	031-02049-001	031-02049-001
13	1	Control Transformer	025-30889-000	025-30889-000	025-30889-000	025-30889-000	025-30889-000	025-30889-000	025-30889-000
14	1	Fuse	025-34483-000	025-34483-000	025-34483-000	025-34483-000	025-34483-000	025-34483-000	025-34483-000
15	1	Buss	025-34484-000	025-34484-000	025-34484-000	025-34484-000	025-34484-000	025-34484-000	025-34484-000
16	1	Display	031-01110-000	031-01110-000	031-01110-000	031-01110-000	031-01110-000	031-01110-000	031-01110-000
17	1	Membrane, Keypad	024-27838-000	024-27838-000	024-27838-000	024-27838-000	024-27838-000	024-27838-000	024-27838-000
18	1	Switch, On/Off	024-25517-000	024-25517-000	024-25517-000	024-25517-000	024-25517-000	024-25517-000	024-25517-000
19	1	Assm Ribbon Cable	031-01109-211	031-01109-211	031-01109-211	031-01109-211	031-01109-211	031-01109-211	031-01109-211
20	4	Terminal Block, Fan	025-34447-000	025-34447-000	025-34447-000	025-34447-000	025-34447-000	025-34447-000	025-34447-000
	3	Terminal Block	N/A	N/A	025-37619-000	025-34485-000	025-34485-000	025-34485-000	025-37619-000
21	3		N/A	N/A	025-37620-000	025-34482-000	025-34485-000	025-34485-000	025-37620-000
	1	Circuit Breaker	N/A	N/A	N/A	N/A	N/A	N/A	N/A
	1	NF Disconnect Switch	024-25564-000	024-31888-000	N/A	N/A	N/A	N/A	N/A
22	1	Operator Mechanism	025-34417-000	025-34417-000	N/A	N/A	N/A	N/A	N/A
23	1	Lug Kit	025-34418-000	025-34418-000	N/A	N/A	N/A	N/A	N/A
24	1	Battery Backup, RTC Chip	031-00955-000	031-00955-000	031-00955-000	031-00955-000	031-00955-000	031-00955-000	031-00955-000

<sup>s</sup> Recommended Spare Part

\* Circuit Board 031-01314-000 has been replaced by Circuit Board 031-02050-001.

\*\* It is recommended that Item 12 (EPROM) be replaced when Item 11 (Circuit Board) is replaced.

## CONTROL PANEL AND POWER PANEL (CONT'D)

## CONTROL PANEL AND POWER PANEL (CONT'D)

**TABLE 6 (CONT'D) – CONTROL PANEL AND POWER PANEL COMPONENTS (SEE FIGS. 7-11, PAGES 16-20)**

ITEM NO.	QTY	DESCRIPTION	371-02751 -109	371-02751 -110	371-02751 -111	371-02751 -113	371-02751 -115	371-02751 -117	371-02751 -120
1	2	Contact 600V (CR 1 & 2)	024-31635-000	024-31635-000	024-31635-000	024-31635-000	024-31635-000	024-31635-000	024-31635-000
2	2	Compressor Contactor	024-31602-000	024-31813-000	024-31818-000	024-31817-000	024-31602-000	024-31813-000	024-31817-000
	2		024-31602-000	024-31813-000	024-31818-000	024-31817-000	024-31640-000	024-31636-000	024-31818-000
3	4	Ground Lug, Cu	025-34455-000	025-34455-000	025-34455-000	025-34455-000	025-34455-000	025-34455-000	025-34455-000
4	8	Surge Suppressor	031-00808-000	031-00808-000	031-00808-000	031-00808-000	031-00808-000	031-00808-000	031-00808-000
5	2	Compressor Manual Starter	025-34488-000	025-31816-000	025-34489-000	025-34486-000	025-34488-000	024-31816-000	025-34486-000
	2		025-34488-000	025-31816-000	025-34489-000	025-34486-000	025-34488-000	024-31816-000	025-34489-000
6	2	Auxiliary Contactor	024-31814-000	024-31814-000	N/A	N/A	024-31814-000	024-31814-000	N/A
7 <sup>s</sup>	4	Fan Contactor	025-34445-000	025-34448-000	025-34448-000	025-34448-000	025-34445-000	025-34448-000	025-34448-000
8 <sup>s</sup>	4	Fan Manual Motor Starter	025-34446-000	025-34449-000	025-34449-000	025-34446-000	025-34446-000	025-34449-000	025-34450-000
9	2	Din Rail Slotted	025-29167-000	025-29167-000	025-29167-000	025-29167-000	025-29167-000	025-29167-000	025-29167-000
10	2	Ground Lug, Cu	025-34085-000	025-34088-000	025-34089-000	025-34089-000	025-34085-000	025-34089-000	025-34088-000
11 <sup>s</sup>	1	Circuit Board*	031-02050-001	031-02050-001	031-02050-001	031-02050-001	031-02050-001	031-02050-001	031-02050-001
12 <sup>s</sup>	1	Firmware EPROM**	031-02049-001	031-02049-001	031-02049-001	031-02049-001	031-02049-001	031-02049-001	031-02049-001
13	1	Control Transformer	025-30889-000	025-30889-000	025-30889-000	025-30889-000	025-30889-000	025-30889-000	025-30889-000
14	1	Fuse	025-34483-000	025-34483-000	025-34483-000	025-34483-000	025-34483-000	025-34483-000	025-34483-000
15	1	Buss	025-34484-000	025-34484-000	025-34484-000	025-34484-000	025-34484-000	025-34484-000	025-34484-000
16	1	Display	031-01110-000	031-01110-000	031-01110-000	031-01110-000	031-01110-000	031-01110-000	031-01110-000
17	1	Membrane, Keypad	024-27838-000	024-27838-000	024-27838-000	024-27838-000	024-27838-000	024-27838-000	024-27838-000
18	1	Switch, On/Off	024-25517-000	024-25517-000	024-25517-000	024-25517-000	024-25517-000	024-25517-000	024-25517-000
19	1	Assm Ribbon Cable	031-01109-211	031-01109-211	031-01109-211	031-01109-211	031-01109-211	031-01109-211	031-01109-211
20	4	Terminal Block, Fan	025-34447-000	025-34447-000	025-34447-000	025-34447-000	025-34447-000	025-34447-000	025-34447-000
	3		025-37619-000	025-34482-000	025-34485-000	025-34485-000	025-37619-000	025-34482-000	025-34485-000
21	3	Terminal Block	025-37620-000	025-34482-000	025-34485-000	025-34485-000	025-37620-000	025-34482-000	025-34485-000
	1		N/A	N/A	N/A	N/A	N/A	N/A	N/A
22	1	NF Disconnect Switch	N/A	N/A	N/A	N/A	N/A	N/A	N/A
	1		N/A	N/A	N/A	N/A	N/A	N/A	N/A
23	1	Operator Mechanism	N/A	N/A	N/A	N/A	N/A	N/A	N/A
	1		N/A	N/A	N/A	N/A	N/A	N/A	N/A
24	1	Lug Kit	N/A	N/A	N/A	N/A	N/A	N/A	N/A
	1		Battery Backup, RTC Chip	031-00955-000	031-00955-000	031-00955-000	031-00955-000	031-00955-000	031-00955-000

<sup>s</sup> Recommended Spare Part

\* Circuit Board 031-01314-000 has been replaced by Circuit Board 031-02050-001.

\*\* It is recommended that Item 12 (EPROM) be replaced when Item 11 (Circuit Board) is replaced.



TABLE 6 (CONT'D) – CONTROL PANEL AND POWER PANEL COMPONENTS (SEE FIGS. 7-11, PAGES 16-20)

ITEM NO.	QTY	DESCRIPTION	371-02751 -122	371-02751 -124	371-02751 -127	371-02751 -201	371-02751 -203	371-02751 -204	371-02751 -206
1	2	Contactor 600V (CR 1 & 2)	024-31635-000	024-31635-000	024-31635-000	024-31635-000	024-31635-000	024-31635-000	024-31635-000
2	2	Compressor Contactor	024-31640-000	024-31636-000	024-31818-000	024-31636-000	024-31818-000	024-31817-000	024-31830-000
3	4	Ground Lug, Cu	024-31640-000	024-31636-000	024-31818-000	024-31602-000	024-31813-000	024-31818-000	024-31817-000
4	8	Surge Suppressor	025-34455-000	025-34455-000	025-34455-000	025-34455-000	025-34455-000	025-34455-000	025-34455-000
5	2	Compressor Manual Starter	031-00808-000	031-00808-000	031-00808-000	031-00808-000	031-00808-000	031-00808-000	031-00808-000
6	2	Auxiliary Contactor	025-34488-000	024-31816-000	025-34489-000	024-31816-000	025-34489-000	025-34453-000	024-31859-000
7 <sup>s</sup>	4	Fan Contactor	024-31814-000	024-31814-000	N/A	024-31814-000	024-31814-000	N/A	N/A
8 <sup>s</sup>	4	Fan Manual Motor Starter	025-34445-000	025-34448-000	025-34448-000	025-34445-000	025-34448-000	025-34448-000	025-34448-000
9	2	Din Rail Slotted	025-34446-000	025-34449-000	025-34450-000	025-34446-000	025-34449-000	025-34449-000	025-34450-000
10	2	Ground Lug, Cu	025-29167-000	025-29167-000	025-29167-000	025-29167-000	025-29167-000	025-29167-000	025-29167-000
11 <sup>s</sup>	1	Circuit Board*	025-34085-000	025-34088-000	025-34088-000	025-34089-000	025-34085-000	025-34089-000	025-34088-000
12 <sup>s</sup>	1	Firmware EPROM**	031-02050-001	031-02050-001	031-02050-001	031-02050-001	031-02050-001	031-02050-001	031-02050-001
13	1	Control Transformer	031-02049-001	031-02049-001	031-02049-001	031-02049-001	031-02049-001	031-02049-001	031-02049-001
14	1	Fuse	025-30889-000	025-30889-000	025-30889-000	025-30889-000	025-30889-000	025-30889-000	025-30889-000
15	1	Buss	025-34483-000	025-34483-000	025-34483-000	025-34483-000	025-34483-000	025-34483-000	025-34483-000
16	1	Display	025-34484-000	025-34484-000	025-34484-000	025-34484-000	025-34484-000	025-34484-000	025-34484-000
17	1	Membrane, Keypad	031-01110-000	031-01110-000	031-01110-000	031-01110-000	031-01110-000	031-01110-000	031-01110-000
18	1	Switch, On/Off	024-27838-000	024-27838-000	024-27838-000	024-27838-000	024-27838-000	024-27838-000	024-27838-000
19	1	Assm Ribbon Cable	024-25517-000	024-25517-000	024-25517-000	024-25517-000	024-25517-000	024-25517-000	024-25517-000
20	4	Terminal Block, Fan	031-01109-211	031-01109-211	031-01109-211	031-01109-211	031-01109-211	031-01109-211	031-01109-211
21	3	Terminal Block	025-34447-000	025-34447-000	025-34447-000	025-34447-000	025-34447-000	025-34447-000	025-34447-000
22	1	Circuit Breaker	025-37619-000	025-34482-000	025-34485-000	N/A	N/A	N/A	N/A
23	1	NF Disconnect Switch	025-37620-000	025-34482-000	025-34485-000	N/A	N/A	N/A	N/A
24	1	Operator Mechanism	N/A	N/A	N/A	025-34424-000	024-31851-000	024-31649-000	024-31844-000
25	1	Lug Kit	N/A	N/A	N/A	N/A	N/A	N/A	N/A
26	1	Battery Backup, RTC Chip	N/A	N/A	N/A	025-34417-000	025-34417-000	025-34417-000	025-34417-000
27	1	Battery Backup, RTC Chip	N/A	N/A	N/A	025-34481-000	025-34480-000	025-34479-000	025-34479-000
28	1	Battery Backup, RTC Chip	031-00955-000	031-00955-000	031-00955-000	031-00955-000	031-00955-000	031-00955-000	031-00955-000

<sup>s</sup> Recommended Spare Part

\* Circuit Board 031-01314-000 has been replaced by Circuit Board 031-02050-001.

\*\* It is recommended that Item 12 (EPROM) be replaced when Item 11 (Circuit Board) is replaced.

## CONTROL PANEL AND POWER PANEL (CONT'D)

## CONTROL PANEL AND POWER PANEL (CONT'D)

**TABLE 6 (CONT'D) – CONTROL PANEL AND POWER PANEL COMPONENTS (SEE FIGS. 7-11, PAGES 16-20)**

ITEM NO.	QTY	DESCRIPTION	371-02751 -208	371-02751 -210	371-02751 -211	371-02751 -213	371-02751 -215	371-02751 -217	371-02751 -218
1	2	Contact 600V (CR 1 & 2)	024-31635-000	024-31635-000	024-31635-000	024-31635-000	024-31635-000	024-31635-000	024-31635-000
2	2	Compressor Contactor	024-31602-000	024-31813-000	024-31818-000	024-31817-000	024-31602-000	024-31813-000	024-31818-000
3	4	Ground Lug, Cu	024-31602-000	024-31813-000	024-31818-000	024-31817-000	024-31640-000	024-31636-000	024-31813-000
4	8	Surge Suppressor	025-34455-000	025-34455-000	025-34455-000	025-34455-000	025-34455-000	025-34455-000	025-34455-000
5	2	Compressor Manual Starter	031-00808-000	031-00808-000	031-00808-000	031-00808-000	031-00808-000	031-00808-000	031-00808-000
6	2	Auxiliary Contactor	025-34488-000	024-31816-000	025-34489-000	025-34486-000	025-34488-000	024-31816-000	024-31816-000
7 <sup>s</sup>	4	Fan Contactor	024-31814-000	024-31814-000	N/A	N/A	024-31814-000	024-31814-000	024-31814-000
8 <sup>s</sup>	4	Fan Manual Motor Starter	025-34445-000	025-34448-000	025-34448-000	025-34448-000	025-34445-000	025-34448-000	025-34448-000
9	2	Din Rail Slotted	025-34446-000	025-34449-000	025-34449-000	025-34450-000	025-34446-000	025-34449-000	025-34449-000
10	2	Ground Lug, Cu	025-29167-000	025-29167-000	025-29167-000	025-29167-000	025-29167-000	025-29167-000	025-29167-000
11 <sup>s</sup>	1	Circuit Board*	025-34089-000	025-34085-000	025-34089-000	025-34089-000	025-34089-000	025-34085-000	025-34089-000
12 <sup>s</sup>	1	Firmware EPROM**	031-02050-001	031-02050-001	031-02050-001	031-02050-001	031-02050-001	031-02050-001	031-02050-001
13	1	Control Transformer	031-02049-001	031-02049-001	031-02049-001	031-02049-001	031-02049-001	031-02049-001	031-02049-001
14	1	Fuse	025-30889-000	025-30889-000	025-30889-000	025-30889-000	025-30889-000	025-30889-000	025-30889-000
15	1	Buss	025-34483-000	025-34483-000	025-34483-000	025-34483-000	025-34483-000	025-34483-000	025-34483-000
16	1	Display	025-34484-000	025-34484-000	025-34484-000	025-34484-000	025-34484-000	025-34484-000	025-34484-000
17	1	Membrane, Keypad	031-01110-000	031-01110-000	031-01110-000	031-01110-000	031-01110-000	031-01110-000	031-01110-000
18	1	Switch, On/Off	024-27838-000	024-27838-000	024-27838-000	024-27838-000	024-27838-000	024-27838-000	024-27838-000
19	1	Assm Ribbon Cable	024-25517-000	024-25517-000	024-25517-000	024-25517-000	024-25517-000	024-25517-000	024-25517-000
20	4	Terminal Block, Fan	031-01109-211	031-01109-211	031-01109-211	031-01109-211	031-01109-211	031-01109-211	031-01109-211
21	3	Terminal Block	025-34447-000	025-34447-000	025-34447-000	025-34447-000	025-34447-000	025-34447-000	025-34447-000
22	1	Circuit Breaker	N/A	N/A	N/A	N/A	N/A	N/A	N/A
23	1	NF Disconnect Switch	N/A	N/A	N/A	N/A	N/A	N/A	N/A
24	1	Operator Mechanism	025-34424-000	024-31819-000	024-31820-000	024-31649-000	025-34424-000	024-31819-000	024-31820-000
25	1	Lug Kit	N/A	N/A	N/A	N/A	N/A	N/A	N/A
26	1	Battery Backup, RTC Chip	025-34417-000	025-34417-000	025-34417-000	025-34417-000	025-34417-000	025-34417-000	025-34417-000
27	1	Battery Backup, RTC Chip	025-34481-000	025-34480-000	025-34480-000	025-34479-000	025-34481-000	025-34480-000	025-34480-000
28	1	Battery Backup, RTC Chip	031-00955-000	031-00955-000	031-00955-000	031-00955-000	031-00955-000	031-00955-000	031-00955-000

<sup>s</sup> Recommended Spare Part

\* Circuit Board 031-01314-000 has been replaced by Circuit Board 031-02050-001.

\*\* It is recommended that Item 12 (EPROM) be replaced when Item 11 (Circuit Board) is replaced.



**TABLE 6 (CONT'D) – CONTROL PANEL AND POWER PANEL COMPONENTS (SEE FIGS. 7-11, PAGES 16-20)**

ITEM NO.	QTY	DESCRIPTION	371-02751 -220	371-02751 -222	371-02751 -223	371-02751 -224	371-02751 -225	371-02751 -227	371-02751 -301
1	2	Contactors 600V (CR 1 & 2)	024-31635-000	024-31635-000	024-31635-000	024-31635-000	024-31635-000	024-31635-000	024-31635-000
2	2	Compressor Contactor	024-31817-000	024-31640-000	024-31640-000	024-31636-000	024-31813-000	024-31818-000	024-31636-000
	2		024-31818-000	024-31640-000	024-31640-000	024-31636-000	024-31813-000	024-31818-000	024-31602-000
3	4	Ground Lug, Cu	025-34455-000	025-34455-000	025-34455-000	025-34455-000	025-34455-000	025-34455-000	025-34455-000
4	8	Surge Suppressor	031-00808-000	031-00808-000	031-00808-000	031-00808-000	031-00808-000	031-00808-000	031-00808-000
5	2	Compressor Manual Starter	025-34486-000	025-34488-000	025-34488-000	024-31816-000	024-31816-000	025-34489-000	024-31816-000
	2		025-34489-000	025-34488-000	025-34488-000	024-31816-000	024-31816-000	025-34489-000	025-34488-000
6	2	Auxiliary Contactor	024-31814-000	024-31814-000	024-31814-000	024-31814-000	024-31814-000	N/A	024-31814-000
7 <sup>s</sup>	4	Fan Contactor	025-34448-000	025-34445-000	025-34445-000	025-34448-000	025-34448-000	025-34448-000	025-34445-000
8 <sup>s</sup>	4	Fan Manual Motor Starter	025-34450-000	025-34446-000	025-34446-000	025-34449-000	025-34449-000	025-34450-000	025-34446-000
9	2	Din Rail Slotted	025-29167-000	025-29167-000	025-29167-000	025-29167-000	025-29167-000	025-29167-000	025-29167-000
10	2	Ground Lug, Cu	025-34089-000	025-34089-000	025-34088-000	025-34085-000	025-34085-000	025-34089-000	025-34089-000
11 <sup>s</sup>	1	Circuit Board*	031-02050-001	031-02050-001	031-02050-001	031-02050-001	031-02050-001	031-02050-001	031-02050-001
12 <sup>s</sup>	1	Firmware EPROM**	031-02049-001	031-02049-001	031-02049-001	031-02049-001	031-02049-001	031-02049-001	031-02049-001
13	1	Control Transformer	025-30889-000	025-30889-000	025-30889-000	025-30889-000	025-30889-000	025-30889-000	025-30889-000
14	1	Fuse	025-34483-000	025-34483-000	025-34483-000	025-34483-000	025-34483-000	025-34483-000	025-34483-000
15	1	Buss	025-34484-000	025-34484-000	025-34484-000	025-34484-000	025-34484-000	025-34484-000	025-34484-000
16	1	Display	031-01110-000	031-01110-000	031-01110-000	031-01110-000	031-01110-000	031-01110-000	031-01110-000
17	1	Membrane, Keypad	024-27838-000	024-27838-000	024-27838-000	024-27838-000	024-27838-000	024-27838-000	024-27838-000
18	1	Switch, On/Off	024-25517-000	024-25517-000	024-25517-000	024-25517-000	024-25517-000	024-25517-000	024-25517-000
19	1	Assm Ribbon Cable	031-01109-211	031-01109-211	031-01109-211	031-01109-211	031-01109-211	031-01109-211	031-01109-211
20	4	Terminal Block, Fan	025-34447-000	025-34447-000	025-34447-000	025-34447-000	025-34447-000	025-34447-000	025-34447-000
	3	Terminal Block	N/A	N/A	N/A	N/A	N/A	N/A	N/A
	3		N/A	N/A	N/A	N/A	N/A	N/A	N/A
21	1	Circuit Breaker	024-31649-000	025-34425-000	025-34424-000	024-31819-000	024-31581-000	024-31649-000	024-25564-000
	1	NF Disconnect Switch	N/A	N/A	N/A	N/A	N/A	N/A	N/A
22	1	Operator Mechanism	025-34417-000	025-34413-000	025-34417-000	025-34417-000	025-34417-000	025-34417-000	025-34417-000
23	1	Lug Kit	025-34479-000	025-34414-000	025-34481-000	025-34480-000	025-34480-000	025-34479-000	025-34481-000
24	1	Battery Backup, RTC Chip	031-00955-000	031-00955-000	031-00955-000	031-00955-000	031-00955-000	031-00955-000	031-00955-000

<sup>s</sup> Recommended Spare Part

\* Circuit Board 031-01314-000 has been replaced by Circuit Board 031-02050-001.

\*\* It is recommended that Item 12 (EPROM) be replaced when Item 11 (Circuit Board) is replaced.

**CONTROL PANEL AND POWER PANEL (CONT'D)**

## CONTROL PANEL AND POWER PANEL (CONT'D)

**TABLE 6 (CONT'D) – CONTROL PANEL AND POWER PANEL COMPONENTS (SEE FIGS. 7-11, PAGES 16-20)**

ITEM NO.	QTY	DESCRIPTION	371-02751 -303	371-02751 -304	371-02751 -306	371-02751 -308	371-02751 -310	371-02751 -311	371-02751 -313
1	2	Contact 600V (CR 1 & 2)	024-31635-000	024-31635-000	024-31635-000	024-31635-000	024-31635-000	024-31635-000	024-31635-000
2	2	Compressor Contactor	024-31818-000	024-31817-000	024-31830-000	024-31602-000	024-31813-000	024-31818-000	024-31817-000
	2		024-31813-000	024-31818-000	024-31817-000	024-31602-000	024-31813-000	024-31818-000	024-31817-000
3	4	Ground Lug, Cu	025-34455-000	025-34455-000	025-34455-000	025-34455-000	025-34455-000	025-34455-000	025-34455-000
4	8	Surge Suppressor	031-00808-000	031-00808-000	031-00808-000	031-00808-000	031-00808-000	031-00808-000	031-00808-000
5	2	Compressor Manual Starter	025-34488-000	025-34453-000	024-31859-000	025-34488-000	024-31816-000	025-34489-000	025-34486-000
	2		024-31816-000	025-34489-000	025-34486-000	025-34488-000	024-31816-000	025-34489-000	025-34486-000
6	2	Auxiliary Contactor	024-31814-000	N/A	N/A	024-31814-000	024-31814-000	N/A	N/A
7 <sup>s</sup>	4	Fan Contactor	025-34448-000	025-34448-000	025-34448-000	025-34445-000	025-34448-000	025-34448-000	025-34448-000
8 <sup>s</sup>	4	Fan Manual Motor Starter	025-34449-000	025-34449-000	025-34450-000	025-34446-000	025-34449-000	025-34449-000	025-34450-000
9	2	Din Rail Slotted	025-29167-000	025-29167-000	025-29167-000	025-29167-000	025-29167-000	025-29167-000	025-29167-000
10	2	Ground Lug, Cu	025-34085-000	025-34088-000	025-34088-000	025-34089-000	025-34085-000	025-34085-000	025-34089-000
11 <sup>s</sup>	1	Circuit Board*	031-02050-001	031-02050-001	031-02050-001	031-02050-001	031-02050-001	031-02050-001	031-02050-001
12 <sup>s</sup>	1	Firmware EPROM**	031-02049-001	031-02049-001	031-02049-001	031-02049-001	031-02049-001	031-02049-001	031-02049-001
13	1	Control Transformer	025-30889-000	025-30889-000	025-30889-000	025-30889-000	025-30889-000	025-30889-000	025-30889-000
14	1	Fuse	025-34483-000	025-34483-000	025-34483-000	025-34483-000	025-34483-000	025-34483-000	025-34483-000
15	1	Buss	025-34484-000	025-34484-000	025-34484-000	025-34484-000	025-34484-000	025-34484-000	025-34484-000
16	1	Display	031-01110-000	031-01110-000	031-01110-000	031-01110-000	031-01110-000	031-01110-000	031-01110-000
17	1	Membrane, Keypad	024-27838-000	024-27838-000	024-27838-000	024-27838-000	024-27838-000	024-27838-000	024-27838-000
18	1	Switch, On/Off	024-25517-000	024-25517-000	024-25517-000	024-25517-000	024-25517-000	024-25517-000	024-25517-000
19	1	Assm Ribbon Cable	031-01109-211	031-01109-211	031-01109-211	031-01109-211	031-01109-211	031-01109-211	031-01109-211
20	4	Terminal Block, Fan	025-34447-000	025-34447-000	025-34447-000	025-34447-000	025-34447-000	025-34447-000	025-34447-000
	3	Terminal Block	N/A	N/A	N/A	N/A	N/A	N/A	N/A
21	3		N/A	N/A	N/A	N/A	N/A	N/A	N/A
	1	Circuit Breaker	N/A	N/A	N/A	N/A	N/A	N/A	N/A
22	1	NF Disconnect Switch	024-31870-000	024-31888-000	024-31888-000	024-25564-000	024-31870-000	024-31870-000	024-31888-000
23	1	Operator Mechanism	025-34417-000	025-34417-000	025-34417-000	025-34417-000	025-34417-000	025-34417-000	025-34417-000
24	1	Battery Backup, RTC Chip	031-00955-000	031-00955-000	031-00955-000	031-00955-000	031-00955-000	031-00955-000	031-00955-000

<sup>s</sup> Recommended Spare Part

\* Circuit Board 031-01314-000 has been replaced by Circuit Board 031-02050-001.

\*\* It is recommended that Item 12 (EPROM) be replaced when Item 11 (Circuit Board) is replaced.



TABLE 6 (CONT'D) – CONTROL PANEL AND POWER PANEL COMPONENTS (SEE FIGS. 7-11, PAGES 16-20)

ITEM NO.	QTY	DESCRIPTION	371-02751 -315	371-02751 -316	371-02751 -317	371-02751 -320	371-02751 -322	371-02751 -324	371-02751 -327
1	2	Contactors 600V (CR 1 & 2)	024-31635-000	024-31635-000	024-31635-000	024-31635-000	024-31635-000	024-31635-000	024-31635-000
2	2	Compressor Contactor	024-31602-000	024-31602-000	024-31813-000	024-31817-000	024-31640-000	024-31636-000	024-31818-000
3	4	Ground Lug, Cu	024-31640-000	024-31640-000	024-31636-000	024-31818-000	024-31640-000	024-31636-000	024-31818-000
4	8	Surge Suppressor	025-34455-000	025-34455-000	025-34455-000	025-34455-000	025-34455-000	025-34455-000	025-34455-000
5	2	Compressor Manual Starter	031-00808-000	031-00808-000	031-00808-000	031-00808-000	031-00808-000	031-00808-000	031-00808-000
6	2	Auxiliary Contactor	025-34488-000	025-34488-000	024-31816-000	025-34488-000	025-34488-000	024-31816-000	025-34489-000
7 <sup>s</sup>	4	Fan Contactor	024-31814-000	N/A	024-31814-000	N/A	024-31814-000	024-31814-000	N/A
8 <sup>s</sup>	4	Fan Manual Motor Starter	025-34445-000	025-34445-000	025-34448-000	025-34448-000	025-34445-000	025-34448-000	025-34448-000
9	2	Din Rail Slotted	025-34446-000	025-34446-000	025-34449-000	025-34450-000	025-34446-000	025-34449-000	025-34450-000
10	2	Ground Lug, Cu	025-29167-000	025-29167-000	025-29167-000	025-29167-000	025-29167-000	025-29167-000	025-29167-000
11 <sup>s</sup>	1	Circuit Board*	025-34089-000	025-34089-000	025-34085-000	025-34089-000	025-34089-000	025-34085-000	025-34085-000
12 <sup>s</sup>	1	Firmware EPROM**	031-02050-001	031-02050-001	031-02050-001	031-02050-001	031-02050-001	031-02050-001	031-02050-001
13	1	Control Transformer	031-02049-001	031-02049-001	031-02049-001	031-02049-001	031-02049-001	031-02049-001	031-02049-001
14	1	Fuse	025-30889-000	025-30889-000	025-30889-000	025-30889-000	025-30889-000	025-30889-000	025-30889-000
15	1	Buss	025-34483-000	025-34483-000	025-34483-000	025-34483-000	025-34483-000	025-34483-000	025-34483-000
16	1	Display	025-34484-000	025-34484-000	025-34484-000	025-34484-000	025-34484-000	025-34484-000	025-34484-000
17	1	Membrane, Keypad	031-01110-000	031-01110-000	031-01110-000	031-01110-000	031-01110-000	031-01110-000	031-01110-000
18	1	Switch, On/Off	024-27838-000	024-27838-000	024-27838-000	024-27838-000	024-27838-000	024-27838-000	024-27838-000
19	1	Assm Ribbon Cable	024-25517-000	024-25517-000	024-25517-000	024-25517-000	024-25517-000	024-25517-000	024-25517-000
20	4	Terminal Block, Fan	031-01109-211	031-01109-211	031-01109-211	031-01109-211	031-01109-211	031-01109-211	031-01109-211
21	3	Terminal Block	025-34447-000	025-34447-000	025-34447-000	025-34447-000	025-34447-000	025-34447-000	025-34447-000
22	1	NF Disconnect Switch	N/A	N/A	N/A	N/A	N/A	N/A	N/A
23	1	Operator Mechanism	N/A	N/A	N/A	N/A	N/A	N/A	N/A
24	1	Battery Backup, RTC Chip	N/A	N/A	N/A	N/A	N/A	N/A	N/A

<sup>s</sup> Recommended Spare Part

\* Circuit Board 031-01314-000 has been replaced by Circuit Board 031-02050-001.

\*\* It is recommended that Item 12 (EPROM) be replaced when Item 11 (Circuit Board) is replaced.

## CONTROL PANEL AND POWER PANEL (CONT'D)

This page intentionally left blank

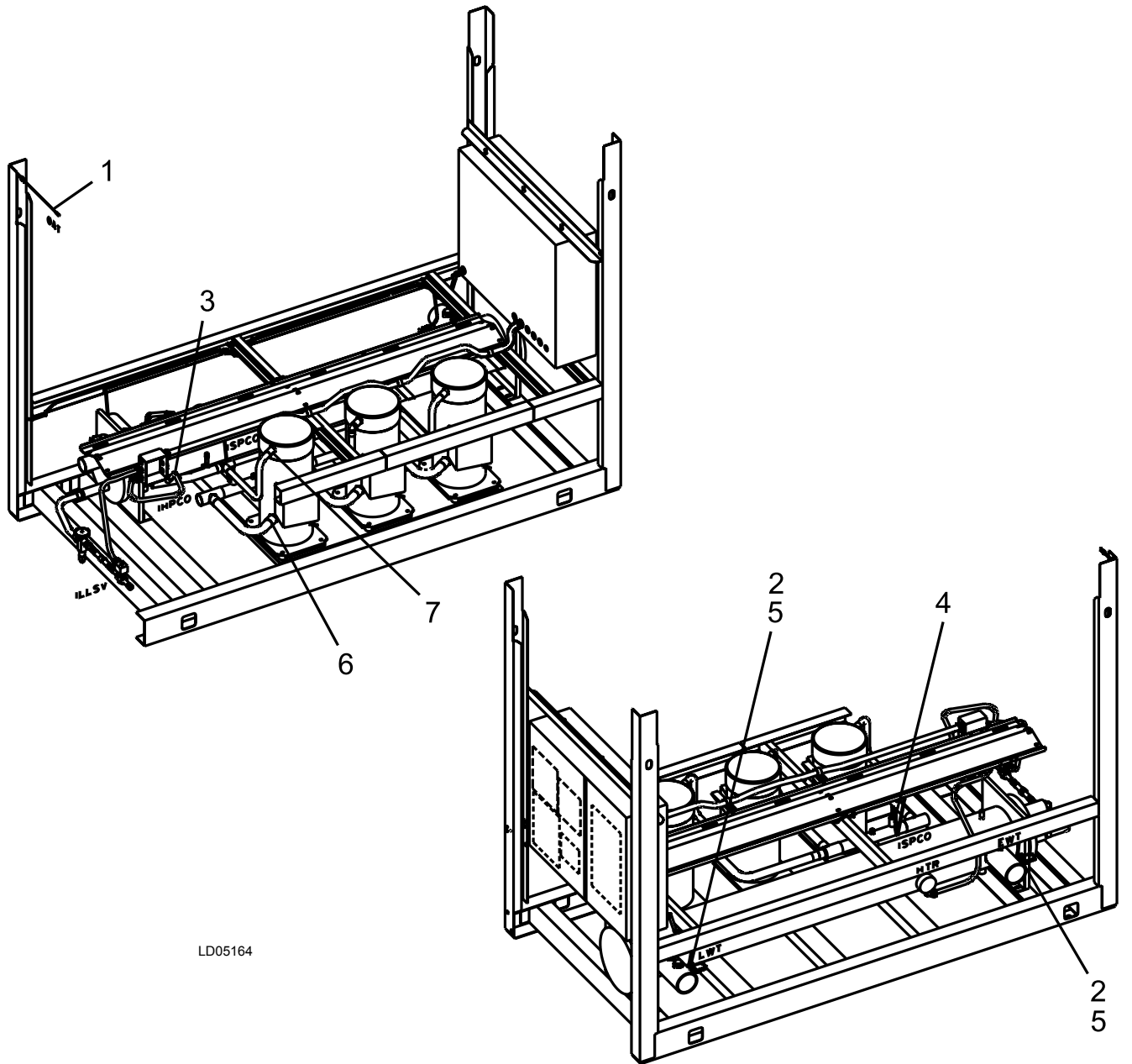
## TRANSDUCERS, PRESSURE CUTOUTS AND TEMP SENSORS

**TABLE 7 – TRANSDUCERS, PRESSURE CUTOUTS AND TEMP SENSORS (SEE FIG. 12, PAGE 45)**

ITEM NUMBER	QUANTITY	SYSTEM	DESCRIPTION	VOLTAGE CODE	PART NUMBER
1 <sup>s</sup>	1	Unit	Sensor, Outside Air Temp.	ALL	025-28663-001
2 <sup>s</sup>	1	1 ea.	Sensor, Water Temp. (EWT, LWT)	ALL	025-29964-000
3 <sup>s</sup>	1 per system	1 and 2	Switch, High Pressure Cutout	ALL	025-28985-002
4 <sup>s</sup>	1 per system	1 and 2	Switch, Low Pressure Cutout	ALL	025-33707-000
5	1	Unit	Compound, Heat Conductive	ALL	013-00898-000
6	1 per system	Unit	Transducer, Suct. Press. (0-200psi)	ALL	025-29583-000
7	1 per system	Unit	Transducer, Disch. Press. (0-400psi)	ALL	025-29139-001

<sup>s</sup> Recommended Spare Part

# TRANSDUCERS, PRESSURE CUTOUTS AND TEMP SENSORS (CONT'D)



LD05164

Control & Power Panel

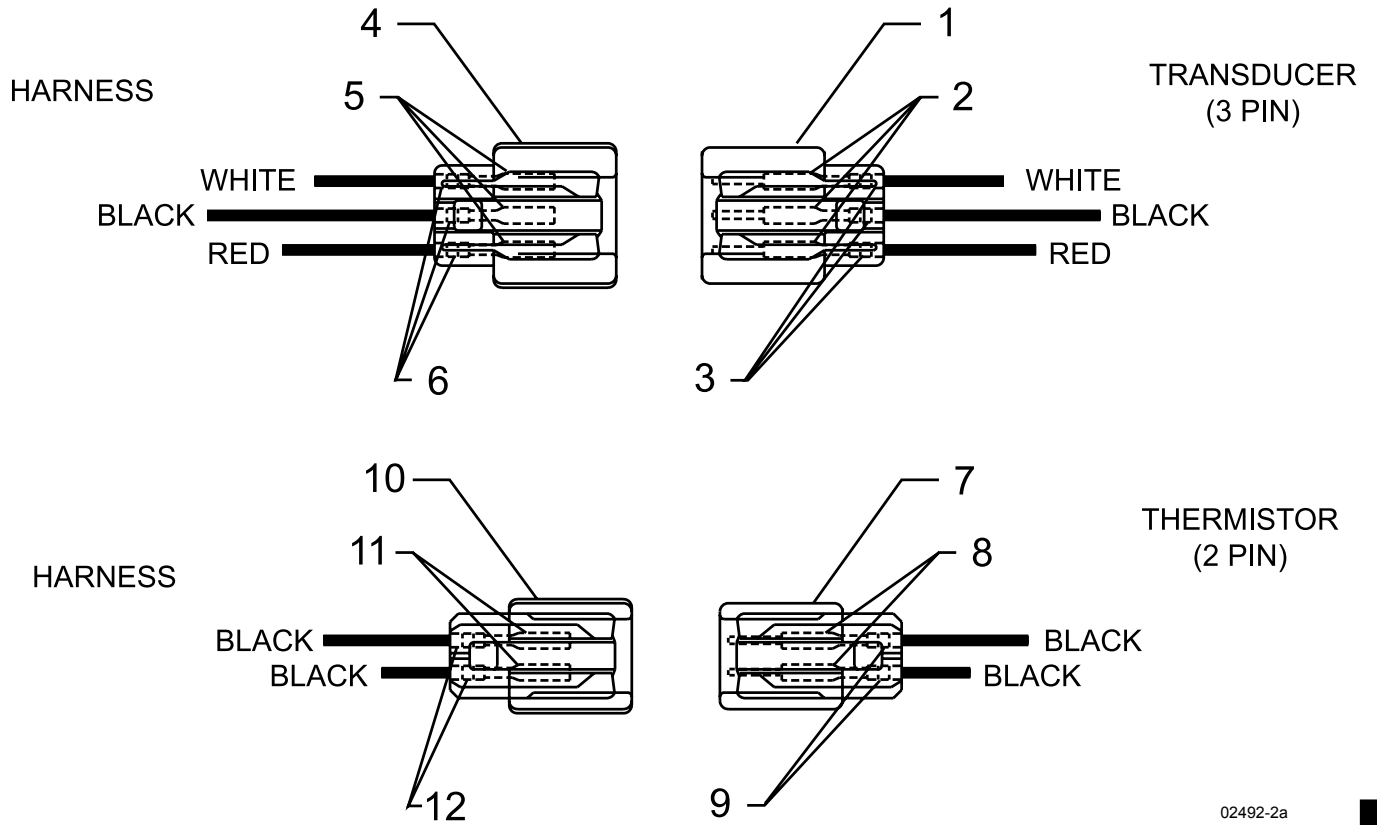
FIG. 12 – TRANSDUCERS, PRESSURE CUTOUTS AND TEMP SENSORS (REF. TABLE 7, PAGE 44)

## TRANSDUCER AND THERMISTOR WIRE HARNESS CONNECTORS - FIELD REPLACEMENT PART NUMBERS

**TABLE 8** – TRANSDUCER AND THERMISTOR WIRE HARNESS CONNECTORS  
- FIELD REPLACEMENT PART NUMBERS (SEE FIG. 13, PAGE 47)

ITEM NO.	LOCATION	DESCRIPTION	PINS	PART NUMBER
1	Transducer	Plug Connector	3 Pin End	025-28953-000
2		Contact Pins		025-28949-000
3		Rubber Collar		025-28950-000
4	Wire Harness	Plug Connector	3 Pin End	025-28954-000
5		Contact Pins		025-28952-000
6		Rubber Collar		025-28950-000
7	Thermistor	Plug Connector	2 Pin End	025-28948-000
8		Contact Pins		025-28949-000
9		Rubber Collar		025-28950-000
10	Wire Harness	Plug Connector	2 Pin End	025-28951-000
11		Contact Pins		025-28952-000
12		Rubber Collar		025-28950-000

## TRANSDUCER AND THERMISTOR WIRE HARNESS CONNECTORS - FIELD REPLACEMENT PART NUMBERS (CONT'D)



02492-2a

**FIG. 13** – TRANSDUCER AND THERMISTOR WIRE HARNESS CONNECTORS - FIELD REPLACEMENT PART NUMBERS (REF. TABLE 8, PAGE 46)

## YCU L CHILLER OPTIONS – KITS

TABLE 9 – FIELD INSTALLABLE OPTIONS TABLE

MODEL NUMBER	VIBRATION ISOLATORS SPRING 1" DEFLEC ALUMINIUM* & BLK FIN	VIBRATION ISOLATORS SPRING 2" (SEISMIC) ALUMINIUM* & BLK FIN	VIBRATION ISOLATOR PAD 1/2" DEFLEC NEOPRENE	VIBRATION ISOLATORS SPRING 1" DEFLEC COPPER*	VIBRATION ISOLATORS SPRING 2" (SEISMIC) COPPER*	VIBRATION ISOLATORS PAD 1/2" DEFLEC NEOPRENE	HOT GAS BY-PASS SOLENOID VALVE W/ HARNESS**	BAS/EMS TEMPERATURE RESET / OFFSET	REMOTE CONTROL PANEL 60HZ	DISCHARGE PRESSURE TRANSDUCER KIT***	SUCTION PRESSURE TRANSDUCER KIT****
<b>MODEL #</b>	029-22779	029-22779	029-22780	029-22779	029-22779	029-22780	375-32274	375-30914	371-02485	371-02458	371-02457
<b>0016</b>	-021	-024	-006	-021	-025	-001	-109	-000	-104	-001	-001
<b>0026</b>	-021	-024	-006	-021	-025	-001	-101	-000	-104	-001	-001
<b>0030</b>	-021	-025	-001	-021	-025	-001	-102	-000	-104	-001	-001
<b>0036</b>	-021	-025	-001	-021	-028	-001	-103	-000	-104	-001	-001
<b>0040</b>	-001	-025	-001	-001	-029	-002	-103	-000	-104	-001	-001
<b>0046</b>	-014	-017	-002	-014	-017	-002	-104	-000	-104	-002	-002
<b>0056</b>	-014	-017	-002	-022	-017	-002	-105	-000	-104	-002	-002
<b>0060</b>	-014	-017	-002	-022	-026	-004	-105	-000	-104	-002	-002
<b>0066</b>	-003	-017	-002	-022	-026	-004	-105	-000	-104	-002	-002
<b>0076</b>	-022	-026	-002	-023	-030	-004	-107	-000	-104	-002	N/A
<b>0080</b>	-022	-026	-002	-023	-030	-004	-107	-000	-104	-002	N/A
<b>0086</b>	-023	-026	-004	-004	-030	-004	-108	-000	-104	-002	N/A
<b>0090</b>	-023	-027	-004	-004	-031	-004	-108	-000	-104	-002	N/A

\* Note: Condenser Coil Fin Material.

\*\* Note: Hot Gas By-Pass Solenoid Valve Only: 025-34133-000

\*\*\* Note: Discharge Pressure Transducer Only: 025-29139-001

\*\*\*\* Note: Suction Pressure Transducer Only: 025-29583-000

## YFUL CHILLER OPTIONS – KITS (CONT'D)

**TABLE 9 (CONT'D) – FIELD INSTALLABLE OPTIONS TABLE**

MODEL NUMBER	YFUL	RFRGRNT R-22 (50 HZ)	MOTOR CURRENT MODULE KIT	TERMINAL BOARD KIT	LOW AMBIENT KIT	HIGH AMBIENT KIT	DEHYD-RATOR KIT	SUCTION TEMP SENSOR KIT	CHICAGO RELIEF VALVE	REMOTE CONTROL PANEL 60HZ	SEQUENCE CONTROL / AUTOMATIC LEAD TRANSFER	DISCHARGE AIR SENSOR KIT	ACOUSTIC SOUND BLANKET KIT
<b>MODEL #</b>		375-40114	371-02764	371-02754	375-30910	375-	475-33401	475-	022-	371-02485	371-02558	475-33729	010-05988
<b>0016</b>		-001 (32 lb.)	-000	-001	-101 or -102*	28556*	-001	33751-000	08863-000	-104	-008	-000	-001
<b>0026</b>		-002 (38 lb.)	-000	-001	-101 or -102*	28556*	-001	33751-000	08863-000	-104	-008	-000	-002
<b>0030</b>		-003 (58 lb.)	-000	-001	-101 or -102*	28553*	-001	33751-000	08863-000	-104	-008	-000	-003
<b>0036</b>		-004 (65 lb.)	-000	-001	-101 or -102*	28553*	-002	33751-000	08863-000	-104	-008	-000	-004
<b>0040</b>		-005 (69 lb.)	-001	-001	-101 or -102*	28553*	-002	33751-000	08863-000	-104	-008	-000	-005
<b>0046</b>		-006 (90 lb.)	-001	-001	-103 or -104**	31802**	-002	33753-000	08863-000	-104	-008	-000	-006
<b>0056</b>		-007 (108 lb.)	-001	-001	-103 or -104**	31802**	-002	33753-000	08863-000	-104	-008	-000	-007
<b>0060</b>		-007 (108 lb.)	-001	-001	-103 or -104**	31802**	-002	33753-000	08863-000	-104	-008	-000	-008
<b>0066</b>		-008 (114 lb.)	-001	-001	-103 or -104**	31802**	-002	33753-000	08863-000	-104	-008	-000	-009
<b>0076</b>		-009 (144 lb.)	-001	-001	-103 or -104**	28549**	-003	33753-000	08863-000	-104	-008	-000	-010
<b>0080</b>		-010 (137 lb.)	-001	-001	-103 or -104**	28549**	-003	33753-000	10071-000	-104	-008	-000	-011
<b>0086</b>		-011 (150 lb.)	-001	-001	-103 or -104**	28549**	-003	33753-000	10071-000	-104	-008	-000	-012
<b>0090</b>		-012 (175 lb.)	-001	-001	-103 or -104**	28549**	-003	33753-000	10071-000	-104	-008	-000	-013

\* Note: Discharge Pressure Transducer & Readout Kit 371-02458-001 is required to complete both High and Low Ambient Kits.

\*\* Note: Discharge Pressure Transducer & Readout Kit 371-02458-002 is required to complete both High and Low Ambient Kits.

**TABLE 9A – CONTROL TRANSFORMER KIT**

MODEL NUMBERS	VOLTAGE	DESCRIPTION	PART NUMBER
YFUL0016-YFUL0090	-17	KIT, CONTROL TRANSFORMER	375-30909-108
	-28		375-30909-109
	-40		375-30909-110
	-46		375-30909-111
	-58		375-30909-112

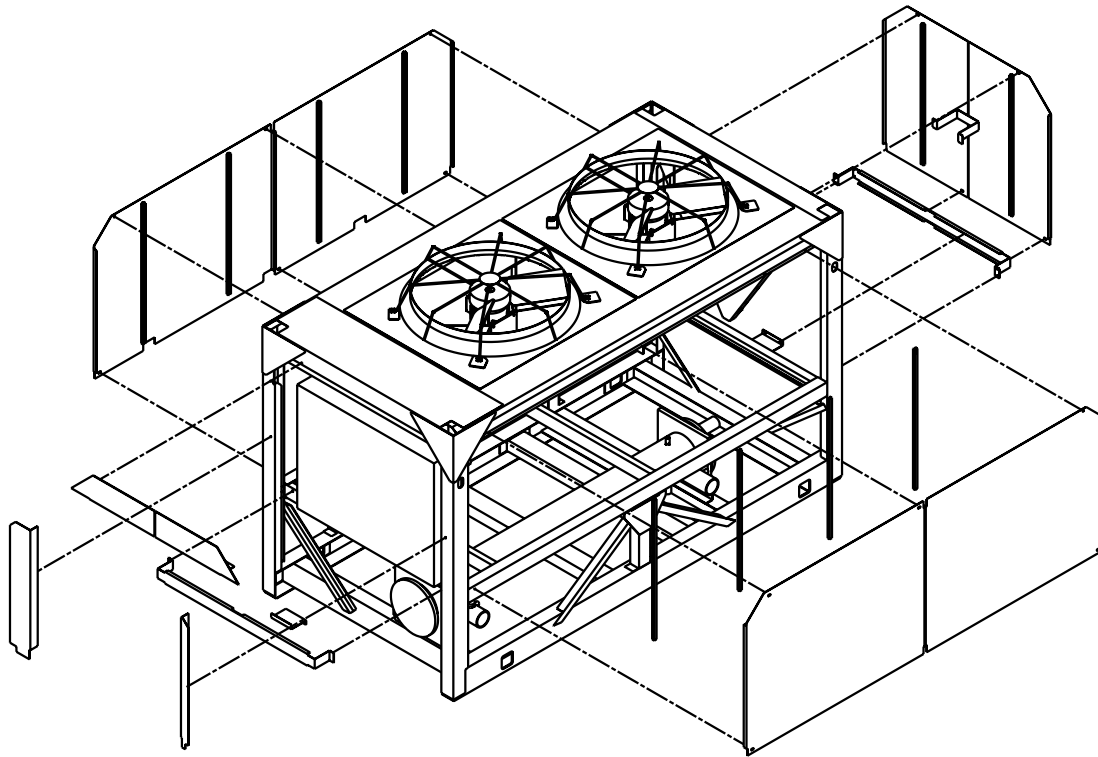


## ENCLOSURE KIT OPTIONS

**TABLE 10 – ENCLOSURE KIT OPTIONS (Top and Bottom Sections) (SEE FIG. 14, PAGE 51)**

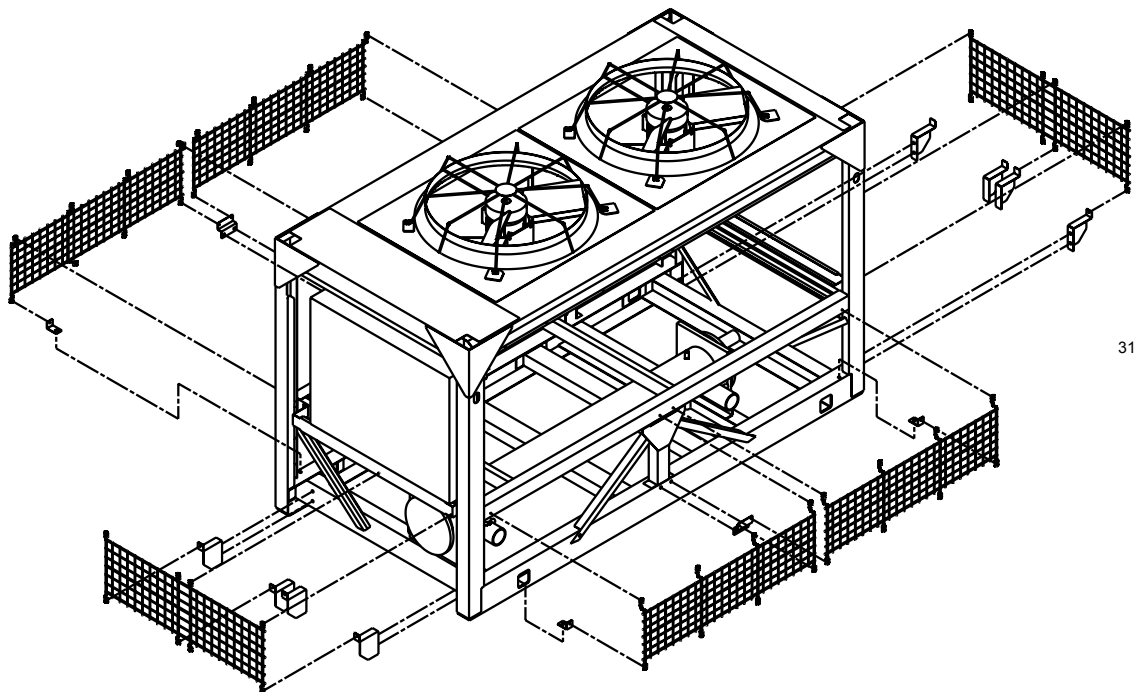
<b>MODEL NUMBER YCUL-</b>	<b>WIRE ENCLOSURE</b>	<b>LOUVERED ENCLOSURE</b>	<b>WIRE / LOUVERED ENCLOSURE</b>	<b>LOUVERED ENCLOSURE CONDENSER ONLY</b>
<b>0016 (TOP)</b>	475-31869-000	475-31867-162	475-31867-162	475-31867-162
<b>0016 (BOTTOM)</b>	475-31870-000	475-31868-163	475-31870-000	N/A
<b>0026 (TOP)</b>	475-31869-000	475-31867-162	475-31867-162	475-31867-162
<b>0026 (BOTTOM)</b>	475-31870-000	475-31868-163	475-31870-000	N/A
<b>0030 (TOP)</b>	475-31834-000	475-31832-162	475-31832-162	475-31832-162
<b>0030 (BOTTOM)</b>	475-31835-000	475-31833-163	475-31835-000	N/A
<b>0036 (TOP)</b>	475-31834-000	475-31832-162	475-31832-162	475-31832-162
<b>0036 (BOTTOM)</b>	475-31835-000	475-31833-163	475-31835-000	N/A
<b>0040 (TOP)</b>	475-31834-000	475-31832-162	475-31832-162	475-31832-162
<b>0040 (BOTTOM)</b>	475-31835-000	475-31833-163	475-31835-000	N/A
<b>0046 (TOP)</b>	475-31297-000	475-30996-162	475-30996-162	475-30996-162
<b>0046 (BOTTOM)</b>	475-31298-000	475-31299-163	475-31298-000	N/A
<b>0056 (TOP)</b>	475-31297-000	475-30996-162	475-30996-162	475-30996-162
<b>0056 (BOTTOM)</b>	475-31298-000	475-31299-163	475-31298-000	N/A
<b>0060 (TOP)</b>	475-31297-000	475-30996-162	475-30996-162	475-30996-162
<b>0060 (BOTTOM)</b>	475-31298-000	475-31299-163	475-31298-000	N/A
<b>0066 (TOP)</b>	475-31297-000	475-30996-162	475-30996-162	475-30996-162
<b>0066 (BOTTOM)</b>	475-31298-000	475-31299-163	475-31298-000	N/A
<b>0076 (TOP)</b>	475-31808-000	475-31806-162	475-31806-162	475-31806-162
<b>0076 (BOTTOM)</b>	475-31809-000	475-31807-163	475-31809-000	N/A
<b>0080 (TOP)</b>	475-31808-000	475-31806-162	475-31806-162	475-31806-162
<b>0080 (BOTTOM)</b>	475-31809-000	475-31807-163	475-31809-000	N/A
<b>0086 (TOP)</b>	475-31808-000	475-31806-162	475-31806-162	475-31806-162
<b>0086 (BOTTOM)</b>	475-31809-000	475-31807-163	475-31809-000	N/A
<b>0090 (TOP)</b>	475-31808-000	475-31806-162	475-31806-162	475-31806-162
<b>0090 (BOTTOM)</b>	475-31809-000	475-31807-163	475-31809-000	N/A

### ENCLOSURE KIT OPTIONS (CONT'D)



31867-01

Louvered Enclosure Kit - Top Section

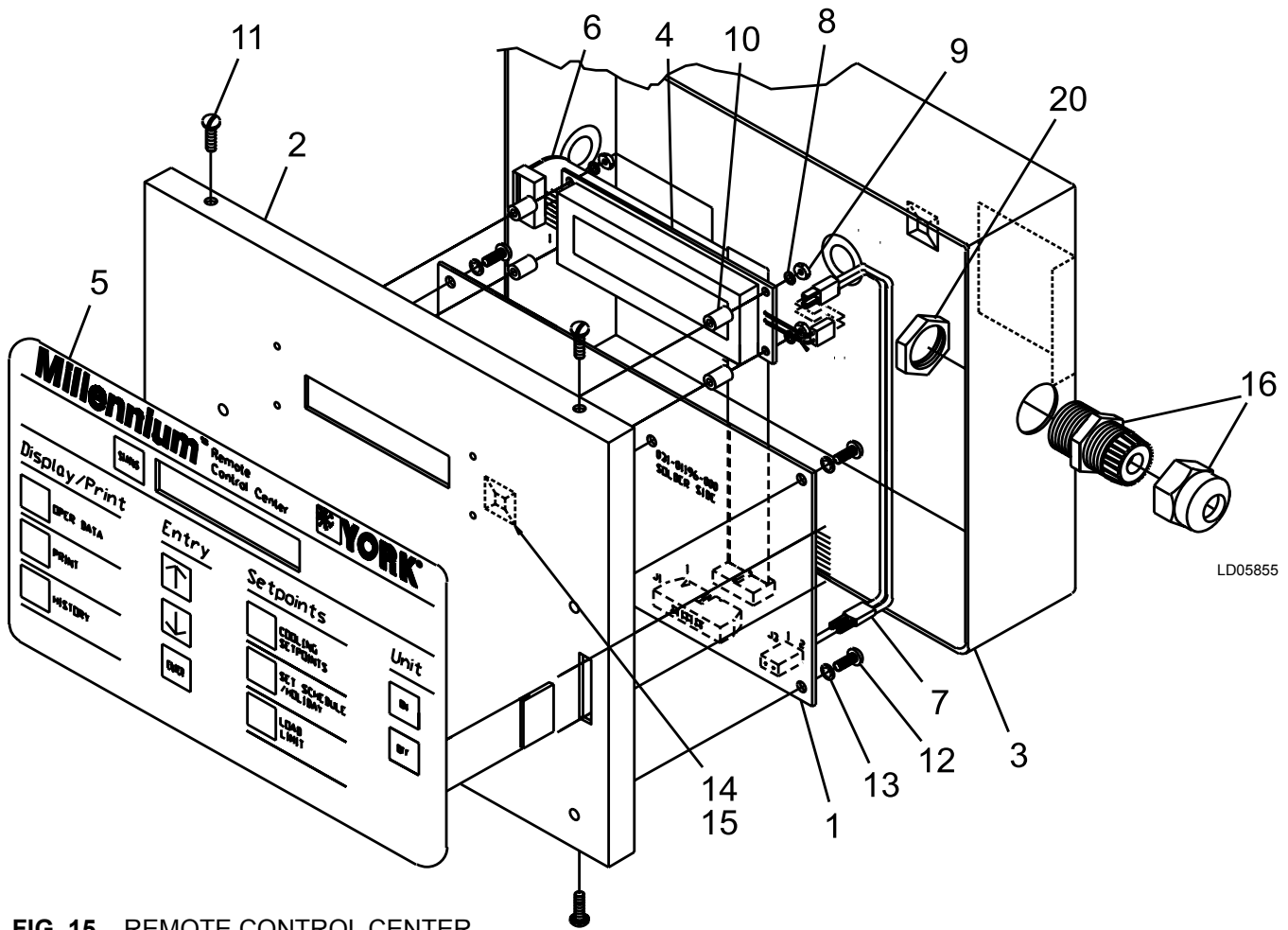


31870-01

Wire Enclosure Kit - Bottom Section

**FIG. 14 – ENCLOSURE KIT OPTIONS (Top and Bottom Sections) - YCUL0016 & YCUL0026 SHOWN (REF. TABLE 10, PAGE 50)**

## REMOTE CONTROL CENTER



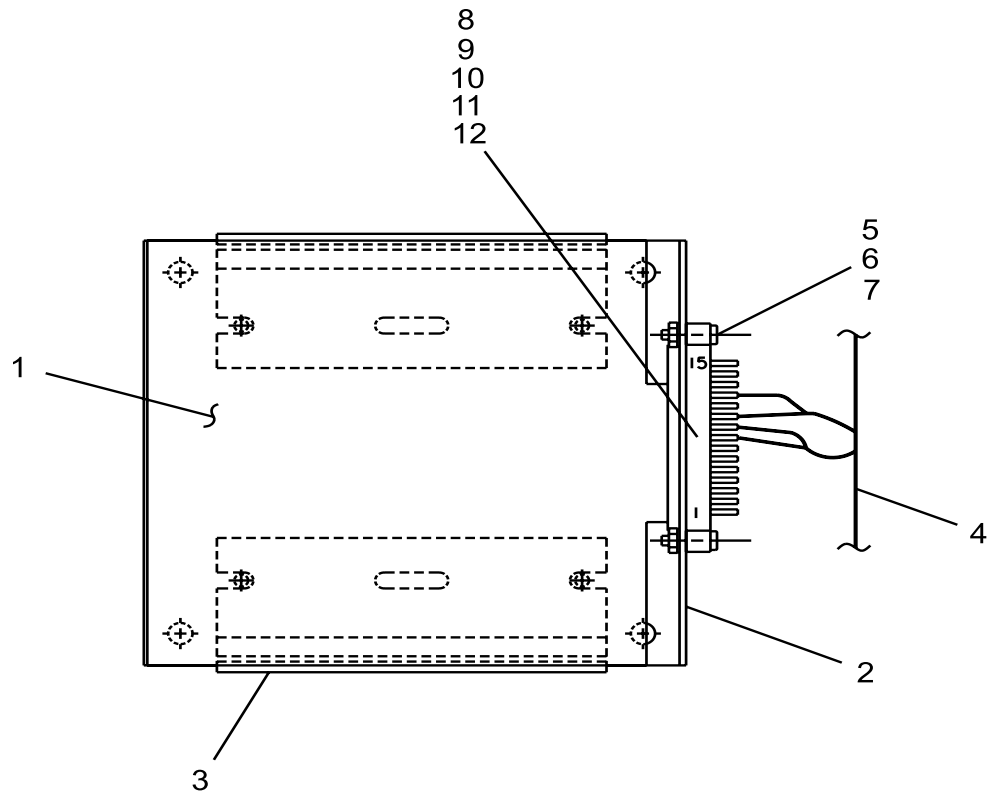
LD05855

**FIG. 15 – REMOTE CONTROL CENTER**

**TABLE 11 – REMOTE CONTROL CENTER PARTS - 60 HZ (371-02485-104)**

REF. NUMBER	QUANTITY	DESCRIPTION	PART NUMBER
1	1	CONTROL, MICROBOARD	031-01196-000
2	1	COVER, REMOTE CONTROL	371-02485-311
3	1	BASE, REMOTE CONTROL	071-02485-320
4	1	DISPLAY, LCD	031-01110-000
5	1	SWITCH, KEYPAD	024-30930-000
6	1	RIBBON CABLE	071-01289-211
7	1	WIRE CABLE	071-01289-212
10	4	SPACER, NYLON 1/4 OD X 7/16 LG.	021-17575-000
11	1	TRANSFORMER	025-29917-002
14	3	CABLE TIE MOUNT	025-25155-000
15	1	EPROM	031-02016-003
16	1	CABLE FITTING	025-05701-000
17	2	INSULATOR, RECIPAK, ROOFTOP	071-01730-000
18	2	MODULE, LAN TRANSIENT PROTECTION (LTP)	031-01586-000
19	1	INSTALLATION INSTRUCTIONS	071-01289-002
20	1	NUT, LOCKING, HEYCO-3232	025-31732-000
21	1	OPERATOR'S MANUAL	150.63-NM1

## REMOTE CURRENT/TEMPERATURE RESET PARTS BREAKDOWN



LD05256

**FIG. 16 – REMOTE CURRENT/TEMPERATURE RESET COMPONENTS**

**TABLE 12 – REMOTE CURRENT OR TEMPERATURE RESET KIT NUMBER 375-90914-000**

REF. NUMBER	QUANTITY	DESCRIPTION	PART NUMBER
1	1	CONTROL, REMOTE CURRENT/TEMP	031-00814-000
2	1	BRACKET, REMOTE CURRENT/TEMP RESET	371-01232-361
3	1	TRACK, SNAP	071-01232-363
4	1	WIRING, REMOTE CURRENT/TEMP RESET	571-02492-231*
5	2	SCREW, MACHINE PAN HEAD #4	021-17594-000
6	2	NUT, HEX MACH SCREW #4 – 40 UNC-2B	021-10056-000
7	2	LOCKWASHER, HEL. SPG. #4 REG.	021-17576-000

\* refer to TABLE 13

**TABLE 13 – REMOTE RESET WIRING**

REF. NUMBER	QUANTITY	DESCRIPTION	PART NUMBER
8	2	CONT SOC AWG WIRE SIZE 20	025-19674-000
9	2	TERMINAL PUSH ON STRAIGHT	025-06642-000
10	4	TUBING HEAT SHRINKABLE 1/8 ID	025-29632-000
11	1	HGS CONNECTOR ELECTRICAL PLUG	025-32564-000*
12	1	CONNECTOR EDGE, 15 POSITION, 0.125	025-29631-000

\* Was P/N 025-21137-000 prior to Spring 1999.

**RECOMMENDED SPARE PARTS**  
**YORK MODEL YCUL STYLE A AIR COOLED SCROLL CHILLERS**  
**SUGGESTED SPARE PARTS LIST FOR CRITICAL DUTY APPLICATIONS**

**TABLE 14 – RECOMMENDED SPARE PARTS - YCUL CHILLERS (60 Hz)**

<b>PAGE REF. &amp; ITEM NUMBER</b>	<b>DESCRIPTION</b>	<b>MODEL NUMBER YCUL</b>	<b>PART NUMBER</b>
Page 6, Item 1	Fan Motor	All	See Table
Page 6, Item 2	Fan Blade (Standard)	All	See Table
Page 6, Item 2	Fan Blade (Low Noise)	All	See Table
Page 10 & 11, Item 4	Valve, Solenoid, Liquid Line	All	See Table
Page 15, Item <b>OIL</b>	Oil, Compressor	All	011-00434-000
Page 23-42, Item 7	Contact, Fan	All	See Table
Page 23-42, Item 8	Overload, Manual Fan Motor	All	See Table
Page 23-42, Item 11	Micro Board	All	See Table
Page 23-42, Item 12	EPROM	All	See Table
Page 43, Item 1	Sensor, Outside Air Temp.	All	025-28663-001
Page 43, Item 2	Sensor, Water Temp.	All	025-29964-000
Page 43, Item 3	High Pressure Cutout Switch	All	025-28985-002
Page 43, Item 4	Low Pressure Cutout Switch	0016-0066	025-33707-000
Page 46, Note	Valve, Solenoid, Hot Gas By-Pass	All	025-34133-000
Page 46, Note	Transducer, Discharge Pressure	All	025-29139-001
Page 46, Note	Transducer, Suction Pressure	All	025-29583-000

All parts should be purchased from your local YORK Sales And  
Service Center shown on inside back cover.

## YORK SERVICE OFFICES (North America)

### ALABAMA

**Birmingham**  
YORK International Corp.  
(205) 987-0458

### ARIZONA

**Phoenix**  
YORK International Corp.  
(602) 220-9400

### CALIFORNIA

**Los Angeles**  
YORK International Corp.  
(714) 897-0997  
**San Diego**  
YORK International Corp.  
(858) 268-0770  
**San Francisco**  
YORK International Corp.  
(925) 426-1166

### COLORADO

**Denver**  
YORK International Corp.  
(303) 649-1500

### CONNECTICUT

**Danbury**  
YORK International Corp.  
(203) 730-8100

### FLORIDA

**Miami**  
YORK International Corp.  
(954) 389-9675  
**Tampa**  
YORK International Corp.  
(813) 621-1323  
**Orlando**  
YORK International Corp.  
(407) 444-2261

### GEORGIA

**Atlanta**  
YORK International Corp.  
(678) 474-9237

### HAWAII

**Honolulu**  
YORK International Corp.  
(808) 596-0761

### ILLINOIS

**Chicago**  
YORK International Corp.  
(847) 520-1910

### INDIANA

**Indianapolis**  
YORK International Corp.  
(317) 595-3050

### KENTUCKY

**Louisville**  
YORK International Corp.  
(502) 499-6020

### LOUISIANA

**New Orleans**  
YORK International Corp.  
(504) 464-6941

### MARYLAND

**Baltimore/Washington**  
YORK International Corp.  
(410) 720-6383

### MASSACHUSETTS

**Boston**  
YORK International Corp.  
(781) 769-7950

### MICHIGAN

**Detroit**  
YORK International Corp.  
(248) 689-7277

### MINNESOTA

**Minneapolis**  
YORK International Corp.  
(763) 780-4446

### MISSOURI

**Kansas City**  
YORK International Corp.  
(816) 221-9675  
**St. Louis**  
YORK International Corp.  
(314) 770-0909

### NEBRASKA

**Omaha**  
YORK International Corp.  
(402) 593-0632

### NEVADA

**Las Vegas**  
YORK International Corp.  
(702) 873-2200

### NEW JERSEY

**Newark**  
YORK International Corp.  
(732) 225-0606

### NEW MEXICO

**Albuquerque**  
YORK International Corp.  
(505) 797-4956

### NEW YORK

**Albany**  
YORK International Corp.  
(518) 464-6500  
**Buffalo**  
YORK International Corp.  
(716) 633-2172  
**New York**  
YORK International Corp.  
(212) 843-1602

### NORTH CAROLINA

**Charlotte**  
YORK International Corp.  
(704) 598-0000  
**Greensboro**  
YORK International Corp.  
(336) 299-9675  
**Raleigh**  
YORK International Corp.  
(919) 431-9675

### OHIO

**Cincinnati**  
YORK International Corp.  
(513) 489-8871  
**Cleveland**  
YORK International Corp.  
(216) 447-0696  
**Columbus**  
YORK International Corp.  
(614) 841-5242

### PENNSYLVANIA

**Philadelphia**  
YORK International Corp.  
(610) 640-2320  
**Pittsburgh**  
YORK International Corp.  
(412) 364-6600  
**York (HQ)**  
YORK International Corp.  
(717) 771-7890

### SOUTH CAROLINA

**Greenville**  
YORK International Corp.  
(864) 627-9675

### TENNESSEE

**Kingsport**  
YORK International Corp.  
(423) 349-2450  
**Nashville**  
YORK International Corp.  
(615) 833-9675

### TEXAS

**Austin**  
YORK International Corp.  
(512) 481-0220  
**Beaumont**  
YORK International Corp.  
(409) 840-5256  
**Dallas**  
YORK International Corp.  
(972) 241-1219  
**Houston**  
YORK International Corp.  
(713) 782-5200  
**San Antonio**  
YORK International Corp.  
(210) 496-6631

### UTAH

**Salt Lake City**  
YORK International Corp.  
(801) 261-1200

### VIRGINIA

**Richmond**  
YORK International Corp.  
(804) 359-2648

### WASHINGTON

**Seattle**  
YORK International Corp.  
(425) 251-9145

### CANADA

**Ottawa, Ontario**  
(613) 596-9111  
**Toronto, Ontario**  
(905) 890-6812  
**Laval, Quebec**  
(514) 387-6000

YORK Applied Systems field office listing subject to change.  
See us on the web at <http://www.york.com> for additional information.



P.O. Box 1592, York, Pennsylvania USA 17405-1592  
Copyright © by Johnson Controls 2016  
Form 150.63-RP1 (916)  
Issue Date: September 30, 2016  
Supersedes: 150.63-RP1 (302)

800-861-1001  
[www.johnsoncontrols.com](http://www.johnsoncontrols.com)

Subject to change without notice. Printed in USA  
ALL RIGHTS RESERVED