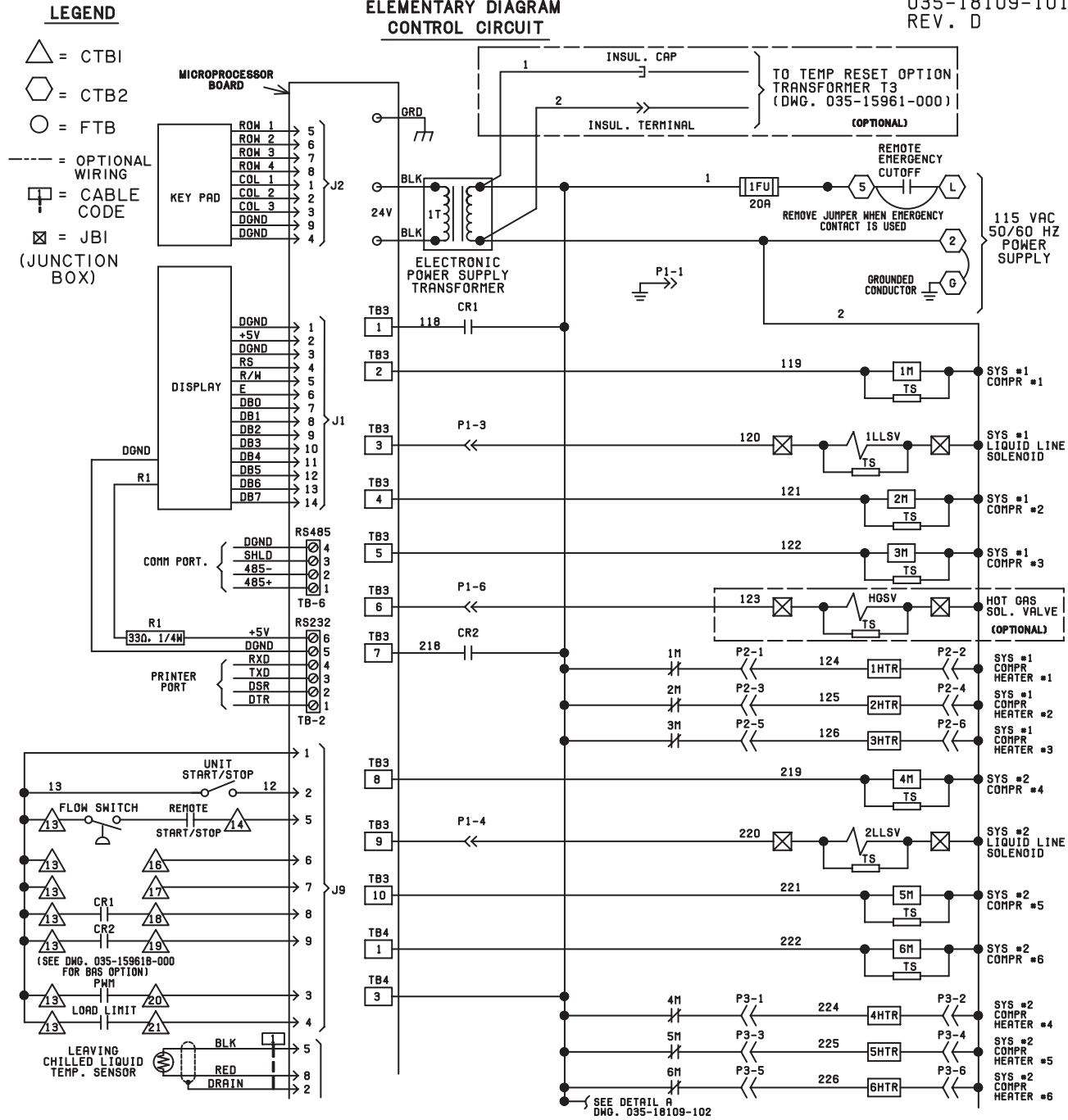
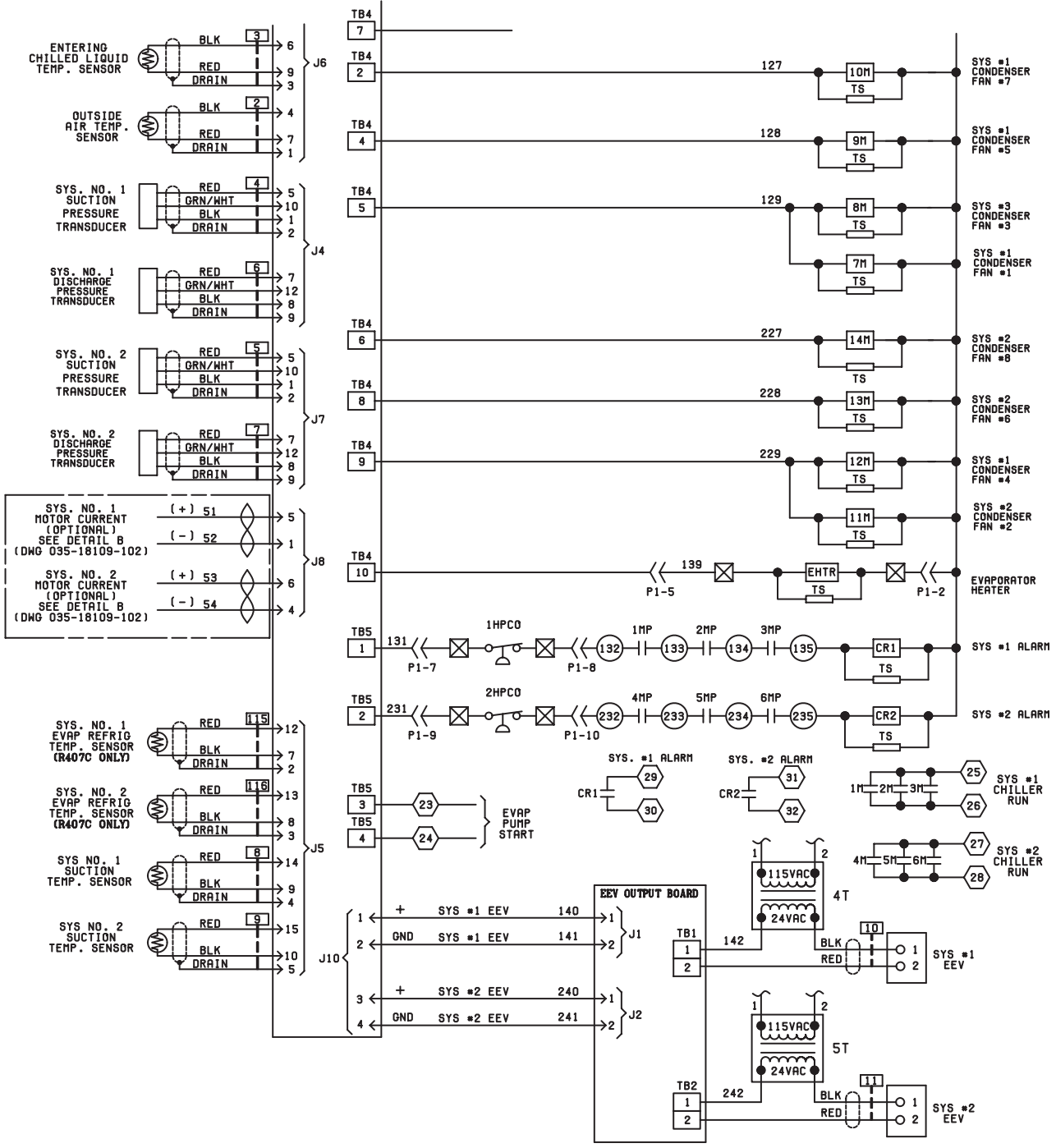


FIG. 30 - ELEMENTARY DIAGRAM, CONTROL CIRCUIT - YCAL0114E\_ - YCAL0124E\_

035-18109-101  
REV. D



ELEMENTARY DIAGRAM  
YCAL0114E\_ - YCAL0124E\_

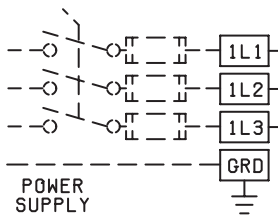


# ELEMENTARY DIAGRAM YCAL0114E - YCAL0124E

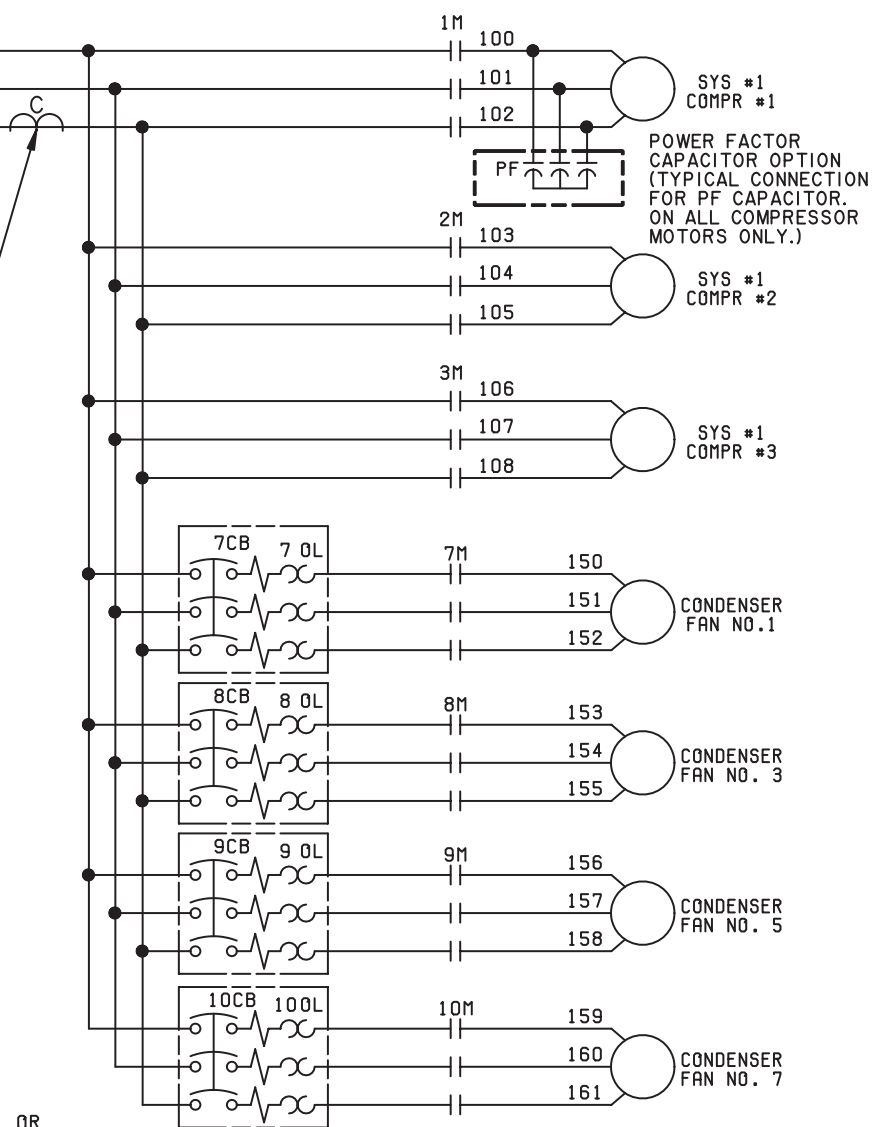
035-18109-103  
REV. -

## ELEMENTARY DIAGRAM POWER CIRCUIT

SYSTEM #1  
FUSED DISCONNECT SW. OR  
CIRCUIT BREAKER (BY OTHERS)



OPTIONAL  
CURRENT  
READOUT



SYSTEM #2  
FUSED DISCONNECT SW. OR  
CIRCUIT BREAKER (BY OTHERS)

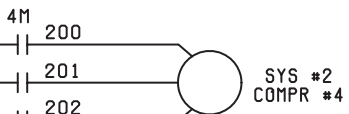
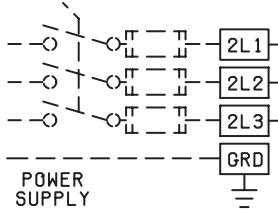
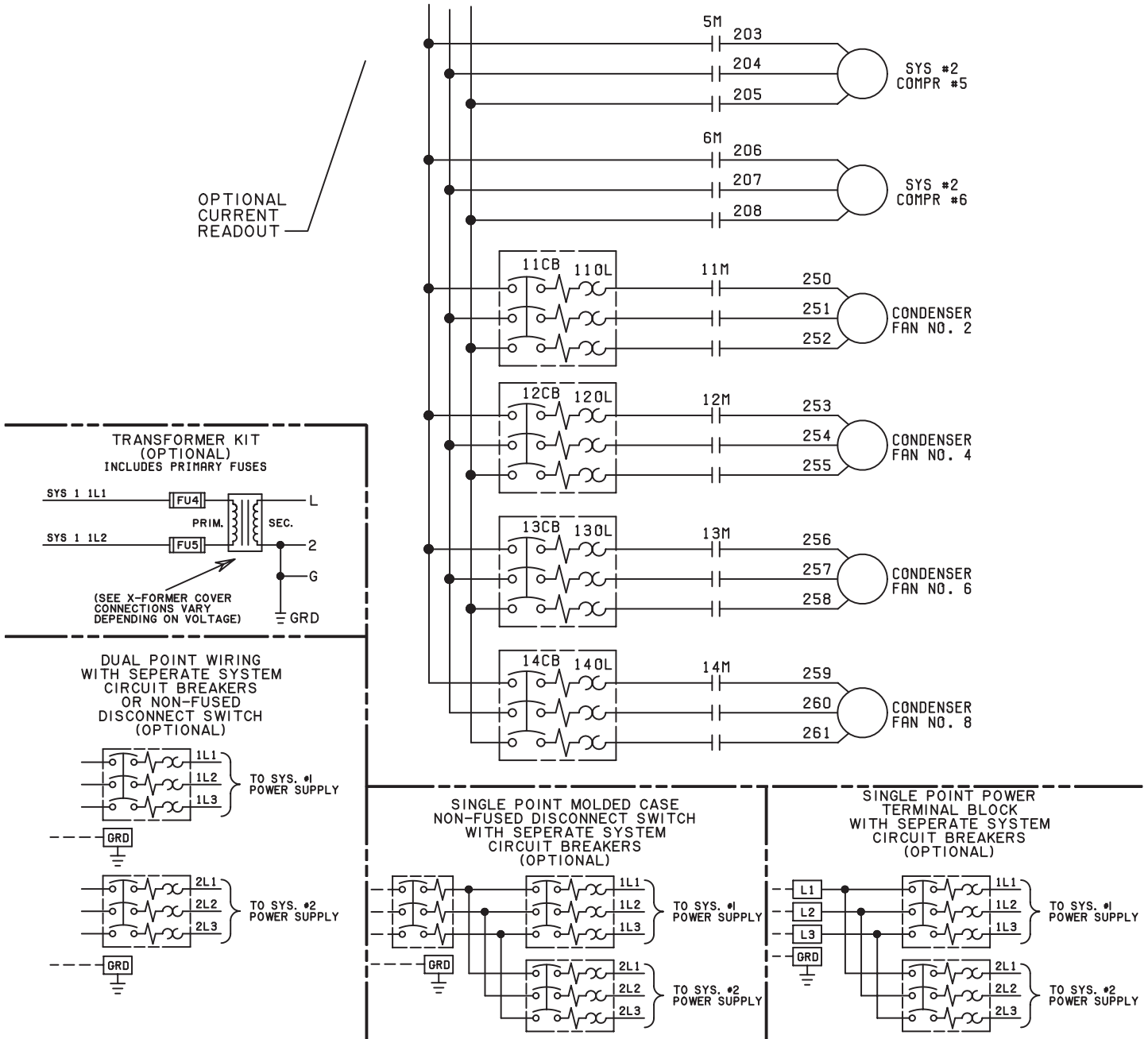
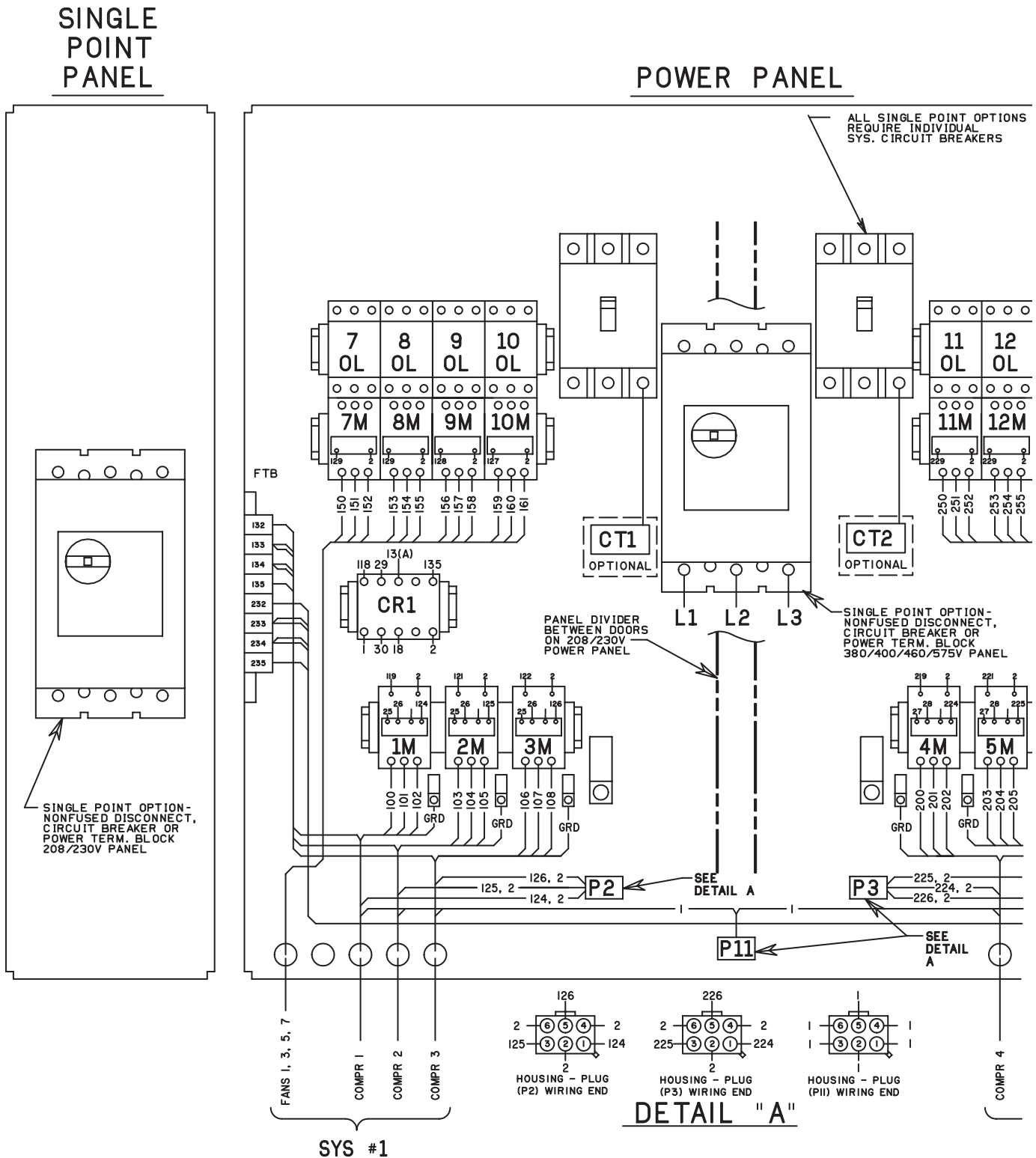


FIG. 31 - ELEMENTARY DIAGRAM, POWER CIRCUIT - YCAL0114E - YCAL0124E



# CONNECTION DIAGRAM YCAL0114E\_ - YCAL0124E\_



LD08848

FIG. 32 - CONNECTION DIAGRAM, MIDDLE MARKET HIGH PERFORMANCE - YCAL0114E\_ - YCAL0124E\_



# ELEMENTARY DIAGRAM YCAL0114E\_ – YCAL0124E\_

## ELEMENTARY DIAGRAM MIDDLE MARKET HIGH PERFORMANCE STANDARD AND REMOTE EVAPORATOR UNITS

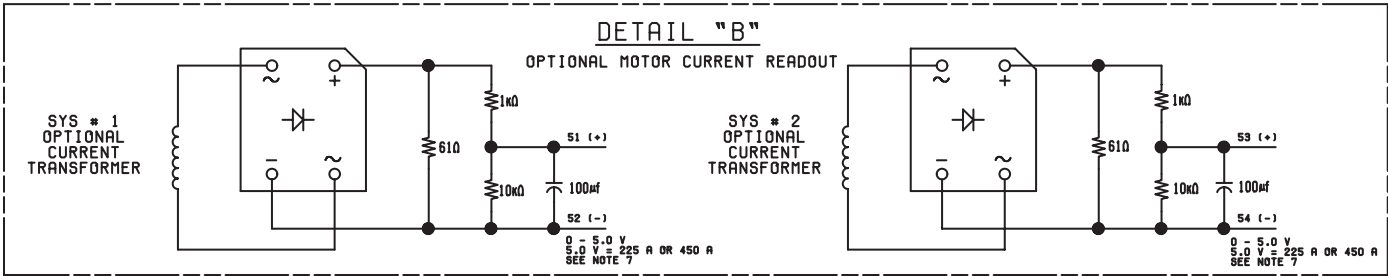
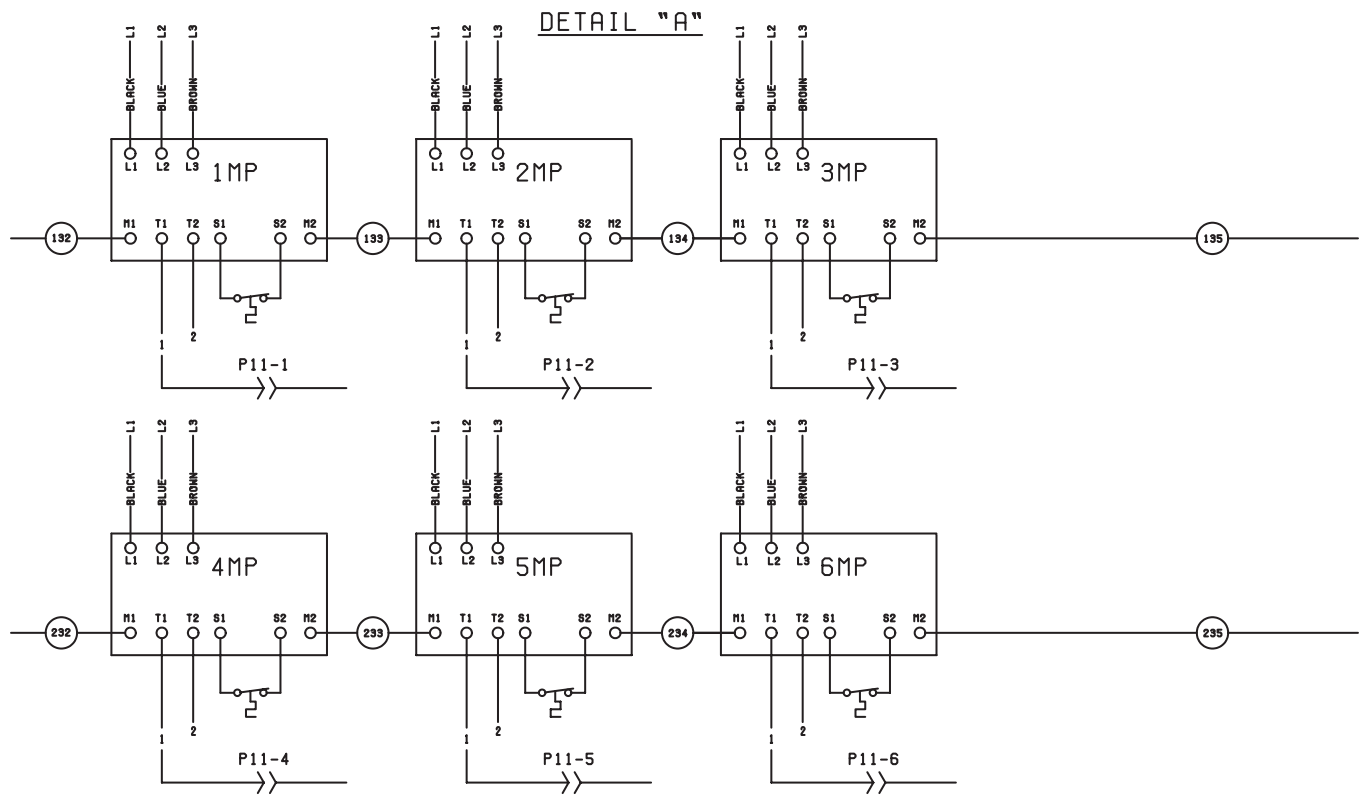
035-18109-102  
REV. B

**NOTES:**

1. FIELD WIRING TO BE IN ACCORDANCE WITH THE CURRENT EDITION OF THE NATIONAL ELECTRICAL CODE AS WELL AS ALL OTHER APPLICABLE CODES AND SPECIFICATIONS.
2. CONTACTS MUST BE SUITABLE FOR SWITCHING 24VDC, (GOLD CONTACTS RECOMMENDED). WIRING SHALL NOT BE RUN IN THE SAME CONDUIT WITH ANY LINE VOLTAGE (CLASS 1) WIRING.
3. TO CYCLE UNIT ON AND OFF AUTOMATICALLY WITH CONTACT SHOWN, INSTALL A CYCLING DEVICE IN SERIES WITH THE FLOW SWITCH. SEE NOTE 2 FOR CONTACT RATING AND WIRING SPECIFICATIONS.
4. TO STOP UNIT (EMERGENCY STOP) WITH CONTACTS OTHER THAN THOSE SHOWN, INSTALL THE STOP CONTACT BETWEEN TERMINALS 5 AND I. IF A STOP DEVICE IS NOT INSTALLED, A JUMPER MUST BE CONNECTED BETWEEN TERMINALS 5 AND I. DEVICE MUST HAVE A MINIMUM CONTACT RATING OF 6A AT 115VOLTS A.C.
5. CONTACTS ARE RATED AT 115V, 100VA, RESISTIVE LOAD ONLY, AND MUST BE SUPPRESSED AT LOAD BY USER.
6. SEE INSTALLATION, OPERATION AND MAINTENANCE MANUAL WHEN OPTIONAL EQUIPMENT IS USED.
7. OPTIONAL CURRENT READOUT, 5V = 225A FOR 380, 400, 460 & 575V. 5V = 450A FOR 200 & 230V CHILLERS
8. IMP THRU 6MP ARE CONTAINED IN THEIR RESPECTIVE COMPRESSOR JUNCTION BOXES.

**LEGEND**

- TS TRANSIENT VOLTAGE SUPPRESSION
- ◻ TERMINAL BLOCK FOR CUSTOMER CONNECTIONS
- ◻ TERMINAL BLOCK FOR CUSTOMER LOW VOLTAGE (CLASS 2) CONNECTIONS. SEE NOTE 2.
- ◻ TERMINAL BLOCK FOR YORK CONNECTIONS ONLY
- WIRING AND COMPONENTS BY YORK
- - - OPTIONAL EQUIPMENT
- - - WIRING AND/OR COMPONENTS BY OTHERS



LD08845

**FIG. 33 – ELEMENTARY DIAGRAM, MIDDLE MARKET HIGH PERFORMANCE – YCAL0114E\_ - YCAL0124E\_**