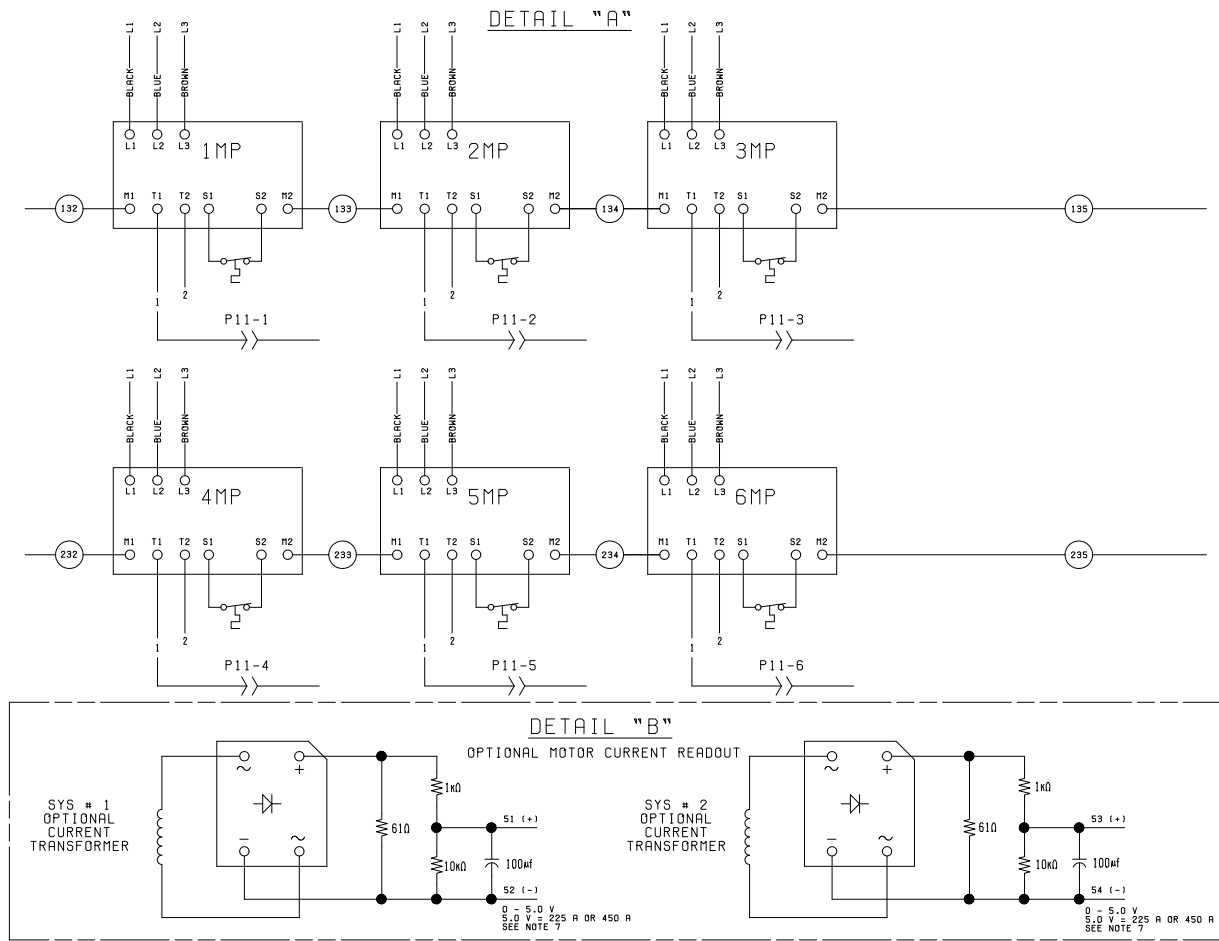


## ELEMENTARY DIAGRAM YCAL0114E\_ – YCAL0134E\_



**Notes:**

1. Field wiring to be in accordance with the current edition of the National Electrical Code as well as all other applicable codes and specifications.
2. Contacts must be suitable for switching 24VDC (gold contacts recommended). Wiring shall not be run in the same conduit with any line voltage (class 1) wiring.
3. To cycle unit ON and OFF automatically with contact shown, install a cycling device in series with the flow switch. See Note 2 for contact rating and wiring specifications.
4. To stop unit (emergency stop) with contacts other than those shown, install the stop contact between terminals 5 and 1. If a stop device is not installed, a jumper must be connected between terminals 5 and 1. Device must have a minimum contact rating of 6A at 115VAC.
5. Contacts are rated at 115V, 100VA, resistive load only, and must be suppressed at load by user.
6. See Installation Operation and Maintenance manual when feeding analog signal for Remote Temp. Reset.
7. Optional current readout. 5V = 225A for 380, 400, 460 & 575V. 5V = 450A for 200 & 230V chillers..
8. 1MP thru 6MP are contained in their respective compressor junction boxes.

**LEGEND**

- TS Transient Voltage Suppression.
- Terminal Block for customer connections.
- Terminal Block for customer low voltage (class 2) connections. See Note 2.
- Terminal block for YORK connections only.
- Wiring and components by YORK.
- Optional equipment.
- - - - - Wiring and/or components by others.

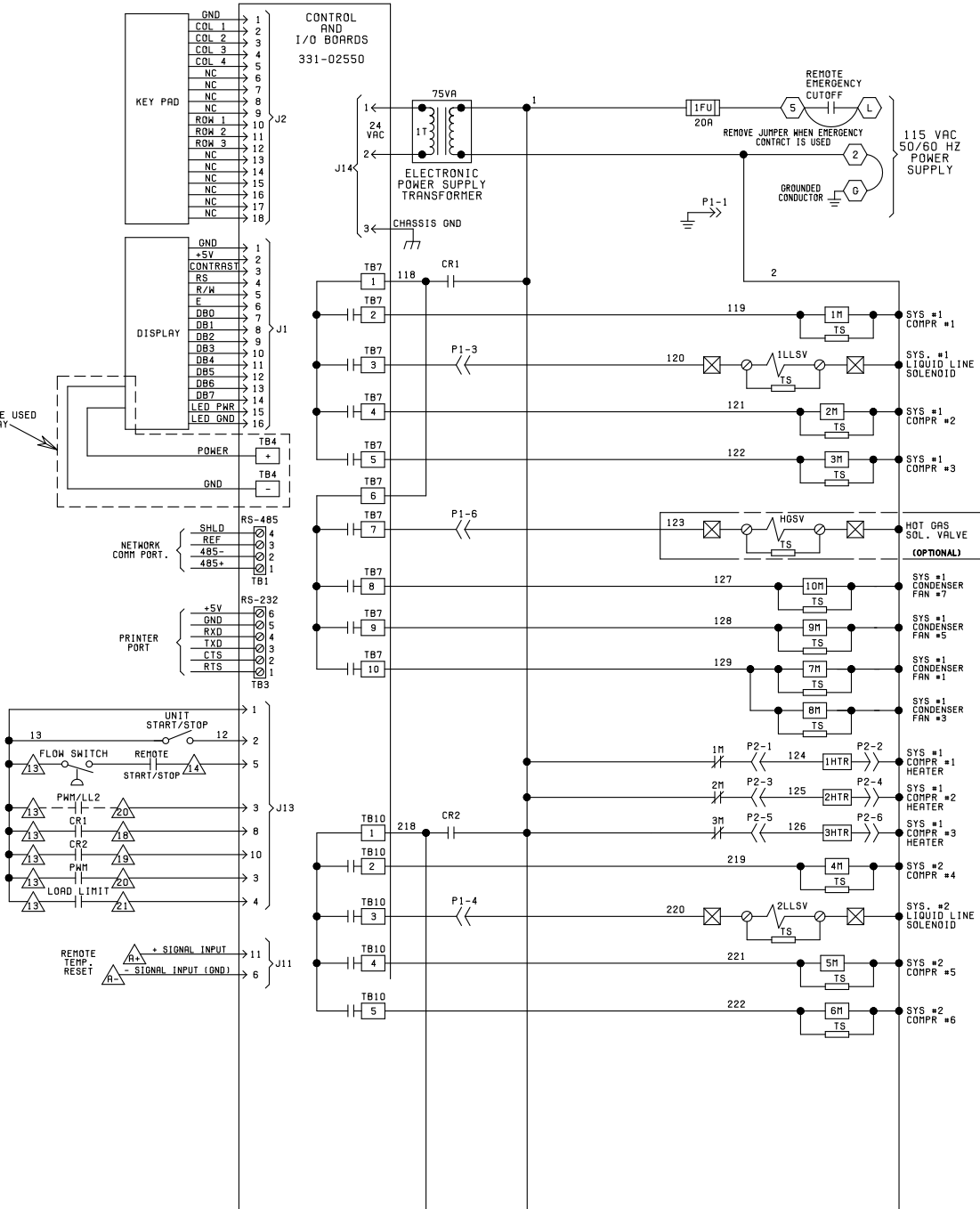
**FIG. 40 – ELEMENTARY DIAGRAM, MIDDLE MARKET HIGH PERFORMANCE – YCAL0114E\_ - YCAL0134E\_**

035-21606-101  
REV. A

ELEMENTARY DIAGRAM  
CONTROL CIRCUIT

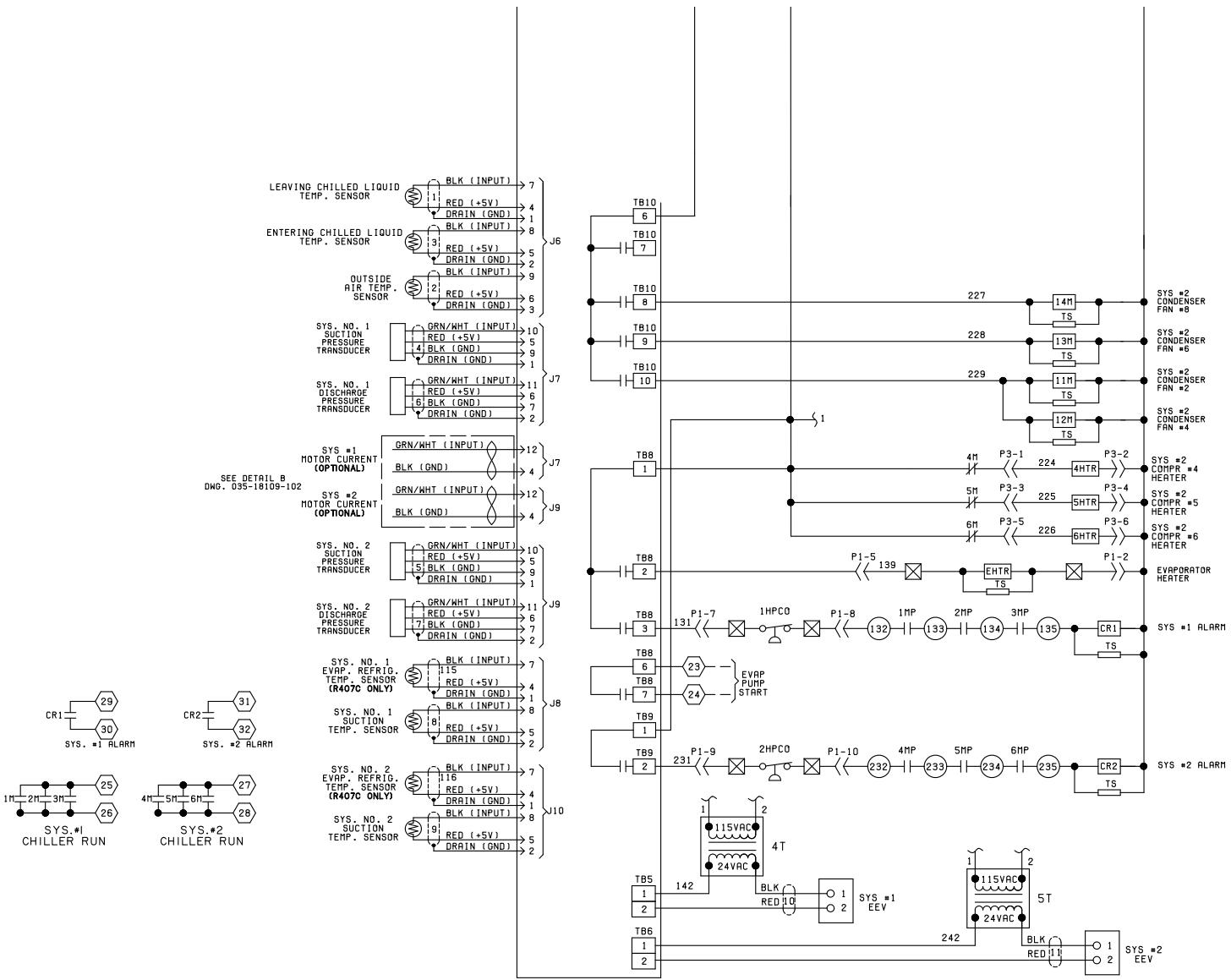
- LEGEND**
- △ = CTB1
  - ◡ = CTB2
  - = FTB
  - = OPTIONAL WIRING
  - :1: = CABLE CODE
  - ⊠ = JBI (JUNCTION BOX)

THIS WIRING MUST BE USED FOR OLD DISPLAY



ELEMENTARY DIAGRAM  
YCAL0114E - YCAL0134E

FIG. 41 - ELEMENTARY DIAGRAM, CONTROL CIRCUIT - YCAL0114E - YCAL0134E



ELEMENTARY DIAGRAM  
 YCAL0114E - YCAL0134E

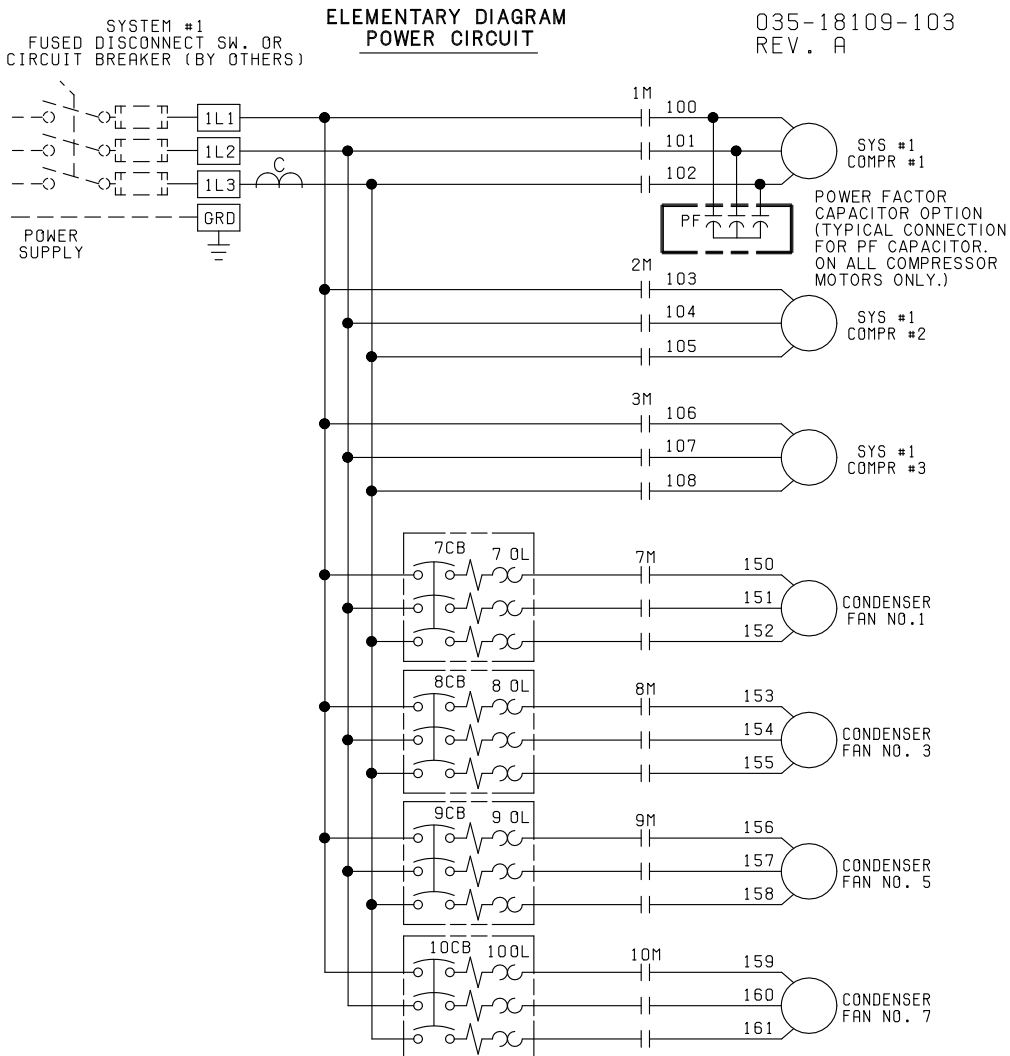
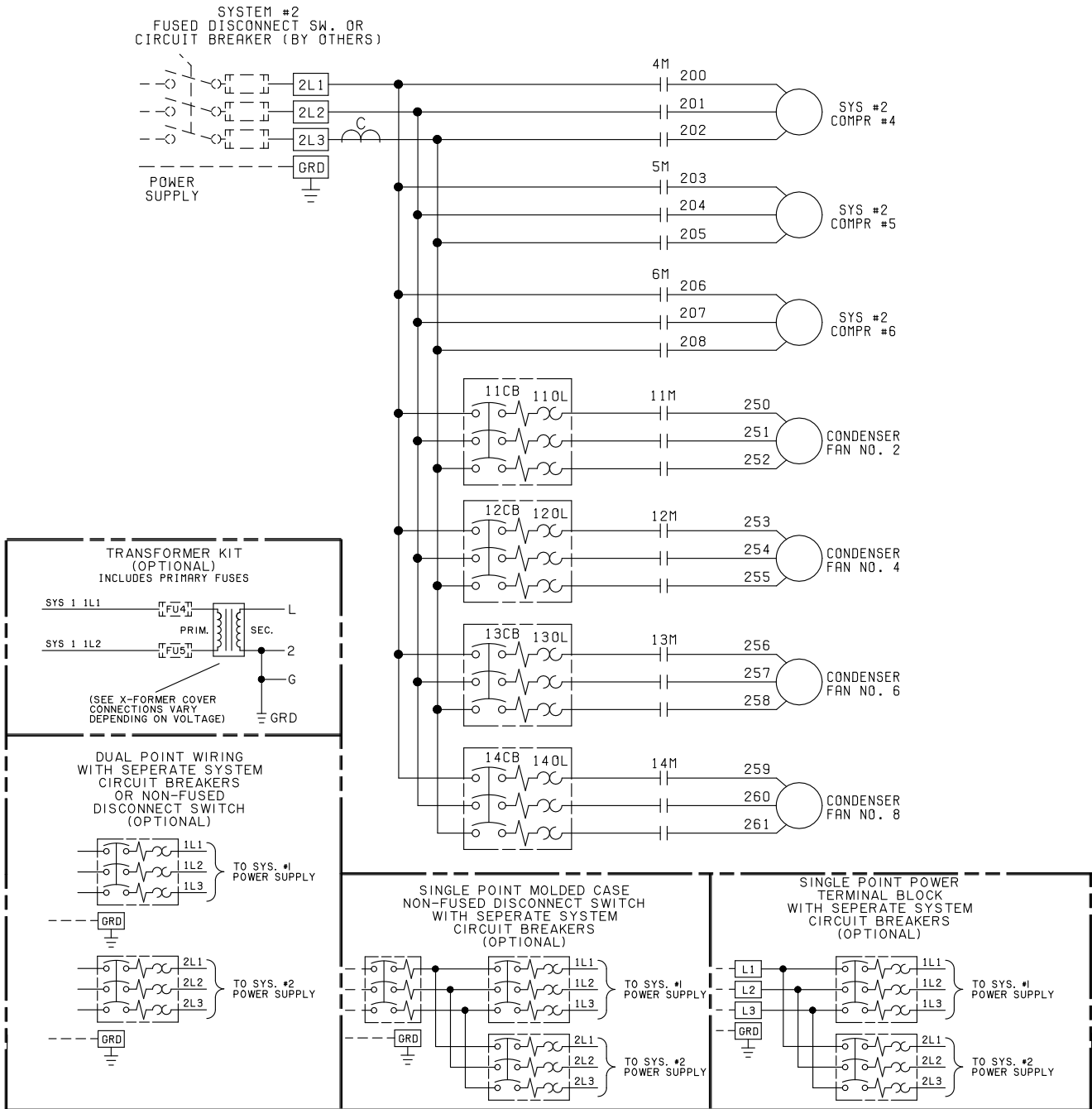


FIG. 42 - ELEMENTARY DIAGRAM, POWER CIRCUIT - YCAL0114E - YCAL0134E



CONNECTION DIAGRAM  
YCAL0114E\_ - YCAL0134E\_

CONNECTION DIAGRAM  
MIDDLE MARKET HIGH PERFORMANCE  
POWER PANEL

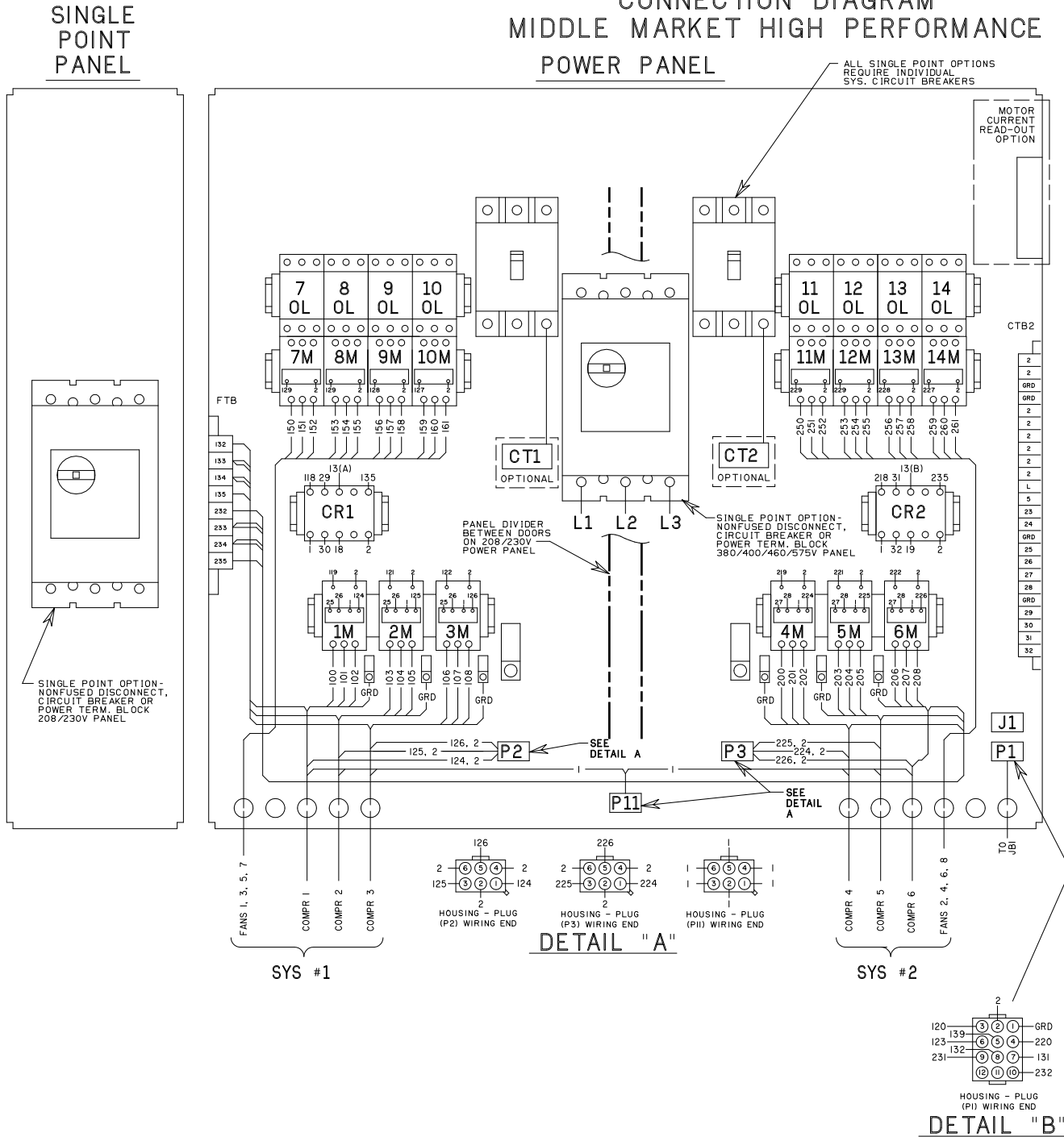


FIG. 43 - CONNECTION DIAGRAM, MIDDLE MARKET HIGH PERFORMANCE - YCAL0114E\_ - YCAL0134E\_

035-21606-104  
REV -

### MICRO PANEL

