

CYRUS SHANK COMPANY

Phone: (708)652-2700 Fax: (708)652-2766

Website Address: www.cyrusshank.com

901 & 903 Relief Valve

Part Number	Inlet Size	Internal Outlet Size	External Outlet Size
901	1 1/4" FNPT	2" FNPT	3" MNPT
903	1 1/2" FNPT	2" FNPT	3" MNPT

This relief valve can be used for ammonia and is very accurate on lift off and blow down making it ideal for freon use also. It can be mounted on a dual manifold with a center distance as low as 5", which makes it a possible substitute for the Frick AF valve. It has a 3" MNPT thread on the outlet which meets the ASHRAE Addendum 15c-2000 code. The upper and lower seats are 304 stainless steel. The sealing surface is encapsulated teflon. Our 900MW, 901M & 903M manifolds are available for dual assembly mounting.

Select from the following housing material:

	Material	Finish	Weight
A	Cast Aluminum, per ASME SB-26B	Anodized, with maxi-coat corrosion protectant on outlet threads	12.5#
D	Ductile Iron, grade 60-40-18 per ASME SA-395	Painted	25#

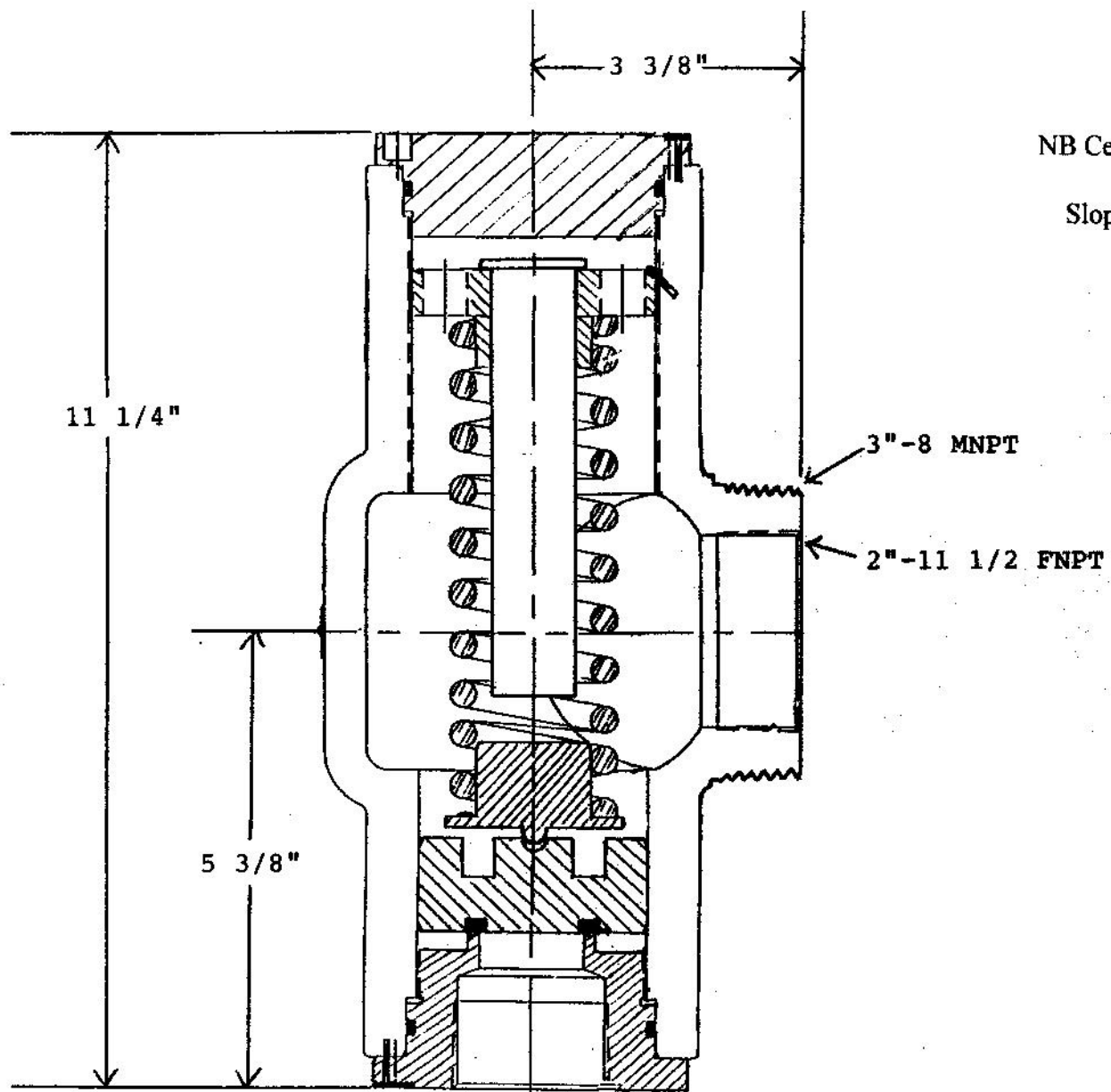
Available in pressure settings of 150# to 350#.

See capacity chart in technical section for SCFM.

Please specify (A) aluminum or (D) ductile iron housing when ordering.

All Shank relief valves are manufactured in accordance with the ASME Quality Control Procedures and stamped with the "UV" and "NB" symbols. They are certified by the National Board of Boiler & Pressure Vessel Inspectors. They are also certified in Canada.

January 2006



NB Cert # SHK-M51040

Slope On Air: 15.18

SET PRESSURE	SCFM
150	2728
175	3145
200	3563
225	3980
250	4398
275	4815
300	5233
325	5650
350	6067

Available in:

A - Anodized 356-T6 Cast Aluminum Housing, per ASME SB-26, with "Maxi-Coat" Anti-Corrosion Protectant. Balance of components are Stainless Steel & Aluminum.

Assembled weight: 12.5#

D - Ductile Iron Housing, Grade 60-40-18 per ASME SA-395, with painted finish. Balance of components are Stainless Steel & Aluminum.

Assembled weight: 25#

- #901 1 1/4"-11 1/2 FNPT
- #903 1 1/2"-11 1/2 FNPT

CYRUS SHANK COMPANY
901 & #903
Safety Relief Valve