

Figure 420 BRASS BODY BALL VALVES



2 PC FULL PORT 600 WOG

Features:

- 600 WOG
- 150 WSP
- Full Port
- Meets NSF-61 Standards (to 2")
- Meets MSS SP-110 Standards
- Blow-out Proof Stem
- Adjustable Packing
- Threaded NPT Ends (ANSI B 1.20.1)
- Forged Brass Body & End Cap
- 100% Electronically Tested in Open and Closed Position at 80 PSI
- Optional Lock Lever (to 2")
- Optional Stem Extension (to 4")
- Optional Tee Handle (to 1")
- Optional Oval Handle (to 2")
- Optional SS Ball & Stem (to 2")



OPTIONS



Lock Lever



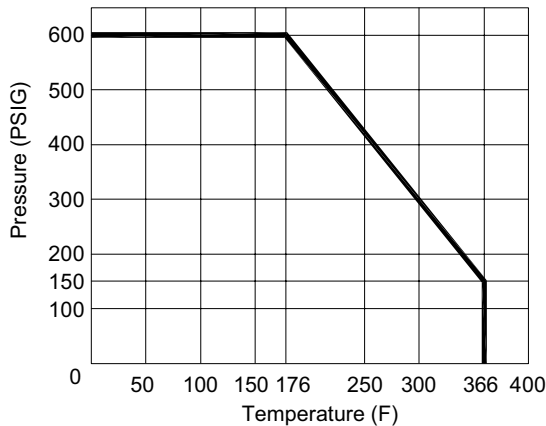
Stem Extension



Tee or Oval Handle



Includes Lock Lever



Acc. to **NSF 61**
Up to 2"



Up to 2"



C US

Gas Approvals:

- 1/2" to 2" - ASME B16.33, CSA
- 2-1/2" to 4" - ASME B16.38, CSA
- 1/2, 2, & 5 PSI @ 32°F to 188°F (0°C to 87°C)
- 125 PSI @ -40°F to 149°F (-40°C to 65°C)
- CGA 3.16
- 1/2" to 4" - UL, LP-Gas Shutoff, rated to 250 PSIG

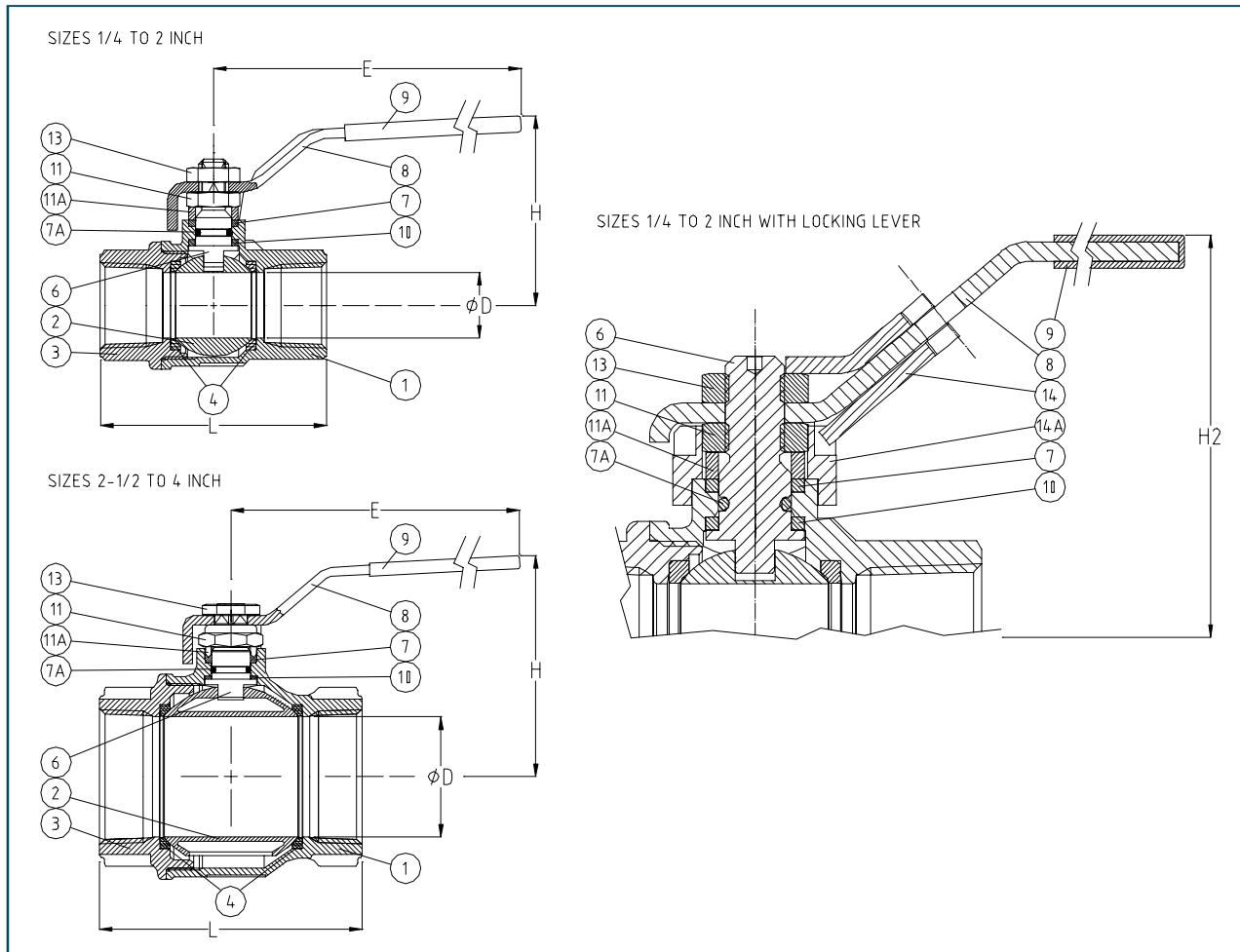
Cv & Weights

Size	Cv	Wt. (Lbs)
1/4	6	0.3
3/8	7	0.3
1/2	19	0.5
3/4	34	0.7
1	50	1.1
1-1/4	104	2.0
1-1/2	268	3.1
2	309	4.2
2-1/2	629	8.0
3	1018	12.9
4	1622	22.0

Figure Number Matrix

F N W 4 2 0 SS LL Size		
TRIM TYPES	LEVER TYPES	SIZE CODES
BLANK = BRASS (CHROME BALL)	BLANK = STANDARD	1/4 = B 1-1/2 = J
SS = SS BALL & STEM (INCL. LL)	LL = LOCK LEVER (STNDRD. w/SS)	3/8 = C 2 = K
Kit Codes (Order Separately)		
EXTENSIONS	TEE HANDLES	OVAL HANDLES
1/4 - 1/2 = FNW420SEBD	1/4 - 1/2 = FNWTHK420B	1/4 - 1/2 = FNW420OHKBCD
3/4 - 1 = FNW420SEFG	3/4 - 1 = FNWTHK420F	3/4 - 1 = FNW420OHKFG
1-1/4 - 1-1/2 = FNW420SEHJ		1-1/4 - 1-1/2 = FNW420OHKJ
2 = FNW420SEK		2 = FNW420OHKK
2-1/2 - 3 = FNW420SELM		
4 = FNW420SEP		
		1/2 = D 2-1/2 = L
		3/4 = F 3 = M
		1 = G 4 = P
		1-1/4 = H

2 PC FULL PORT 600 WOG



Dimensions (Inches)

Size	ØD	E	L	H	H2
1/4	0.39	3.78	2.02	1.65	1.83
3/8	0.39	3.78	2.02	1.65	1.83
1/2	0.59	3.78	2.44	1.81	1.99
3/4	0.78	4.76	2.71	2.28	2.48
1	0.98	4.76	3.07	2.44	2.64
1-1/4	1.25	5.94	3.42	3.00	3.15
1-1/2	1.57	5.94	3.89	3.23	3.38
2	1.94	6.30	4.33	3.74	3.74
2-1/2	2.56	8.11	5.59	4.84	-
3	3.15	8.11	6.45	5.23	-
4	3.94	10.27	7.60	6.49	-

Standard Materials

Ref. No.	Description	Material	Qty
1	Body	Brass CW 617N UNI EN 12165	1
2	Ball	Brass CW 617N UNI EN 12165	1
3	End Cap	(Nickel-Chrome Plated) Brass CW 617N UNI EN 12165	1
4	Seat	PTFE	2
6	Stem	Brass CW 614N UNI EN 12164	1
7	Stem Packing	PTFE	1
7A	Stem O-ring	NBR 75 Shore A	1
8	Handle	Fe P 11 UNI 5867	1
9	Handle Cover	Vinyl	1
10	Thrust Washer	PTFE	1
11	Gland Nut	Zinc Plated Steel 6S	1
11A	Packing Gland	Brass CW 614N UNI EN 12164	1
13	Handle Nut	Zinc Plated Steel 6S	1
14	Locking Pad	Fe P 11 UNI EN 10111	1
14A	Bushing	ZAMA G Zn A14 UNI EN1774	1

DOC: FNWBV420SSLL07 Ver. 4/07

© 2007 - FNW. All rights reserved.
The FNW logo is a registered trademark of Ferguson Enterprises, Inc.

The contents of this publication are presented for information purposes only, and while effort has been made to ensure their accuracy, they are not to be construed as warranties or guarantees, expressed or implied, regarding the products or services described herein or their use or applicability. All sales are governed by our terms and conditions, which are available on request. We reserve the right to modify or improve the designs or specifications of our products at any time without notice. Always verify that you have the most recent product specifications or other documentation prior to the installation of these products.