

- C-1 = 1-1/2 NPTI INLET SIDE OF BEARING FEEDS
- C-2 = 1 NPTI THRUST BEARING DISCHARGE
- C-3 = 1 NPTI SHAFT PUMP DISCHARGE
- C-4 = 3/4 NPTI AUX. OIL PUMP REGULATING VALVE RETURN
- C-5 = 2 NPTI AUX. OIL PUMP SUCTION
- C-6 = 1-1/4 NPTI THRUST OIL RETURN
- C-7 = 1/2 NPTI SUMP DRAIN & CHARGING
- C-8 = 1-1/2 NPTI LOW OIL LEVEL SWITCH
- C-9 = 3/4 NPTI SUMP OIL THERM.
- C-10 = 3/4 NPTI SUMP OIL PRESS.
- C-11 = 1/2 NPTI SEAL OIL RESERVOIR DRAIN
- C-12 = 3/4 NPTI BALANCE PISTON PRESS.
- C-13 = 1 NPTI SUMP VENT
- C-14 = 3/4 NPTI A-4 GAS COMMON SUPPLY
- C-15 = 3/4 NPTI COMPR. TEMP. DISCHARGE
- C-16 = 3/4 NPTI COMPR. PRESS. DISCHARGE
- C-17 = 3/4 NPTI A-4 GAS FILTER SUPPLY
- C-18 = 1 NPTI SUMP VENT RETURN
- C-19 = 3/4 NPTI COMPR. TEMP. SUCTION
- C-20 = 3/4 NPTI SUCTION BEARING OIL DRAIN THERM. CONN.
- C-21 = 3/4 NPTI ATMOSPHERIC SEAL OIL DRAIN TO RESERVOIR
- C-22 THRU 27 = 3/4 NPTI CASING STAGE DRAIN
- C-33 = 3/4 NPTI SUCT. PRESS
- C-34 = 3/4 NPTI A-4 GAS FEED DISCHARGE END
- C-35 = 3/4 NPTI A-4 GAS FEED SUCTION END

08-177539-01

YORK INTERNATIONAL CORPORATION

YORK, PA. 17405

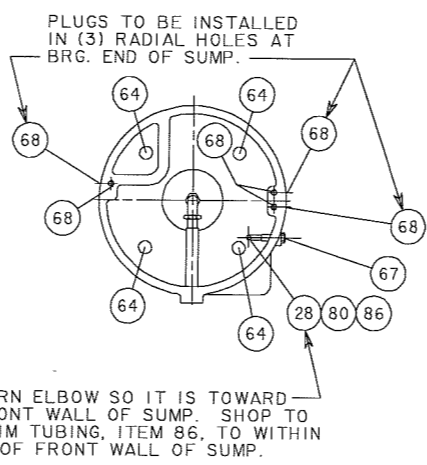
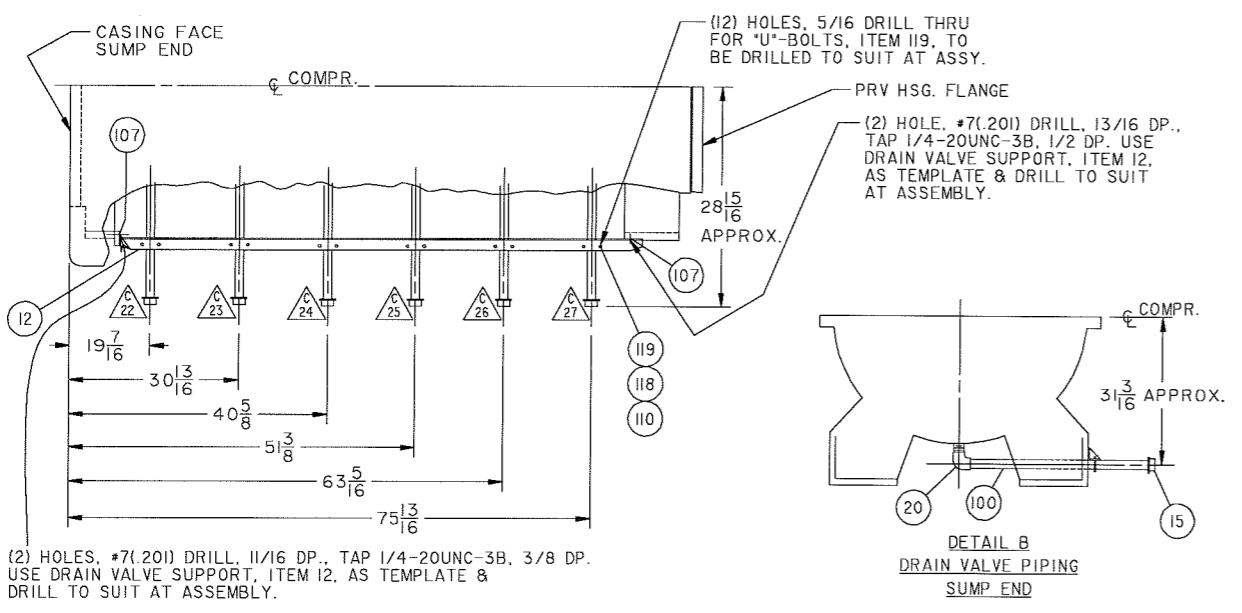
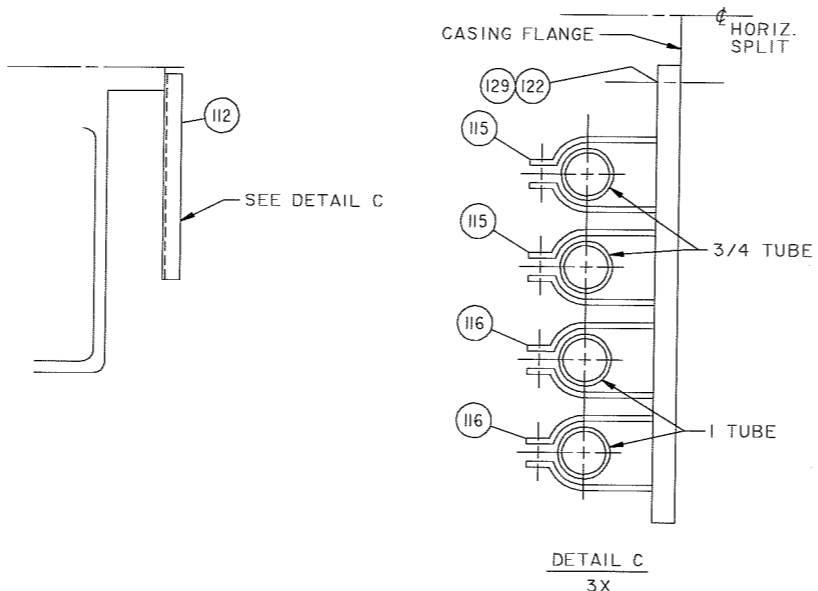
REV. LEV.	DATE	REVISION RECORD	CHG. NO.	DR.	CK.	REV. LEV.	DATE	REVISION RECORD	CHG. NO.	DR.	CK.	REV. LEV.	DATE	REVISION RECORD	CHG. NO.	DR.	CK.
-		NEW	0908 3609														
A	10-20-09	ITEM 56 WAS 58 AT C-5	0909 3609	BLK	AWO												
B	1-18-09	SEE SHEET 2 FOR REV.	0909 3618	BLK	AWO												

*ALL PROPRIETARY RIGHTS IN THE SUBJECT MATTER HEREOF ARE RESERVED, AND NO PERMISSION IS GRANTED TO REPRODUCE THIS PRINT IN WHOLE OR IN PART, OR DISCLOSE ANY OF THE INFORMATION UPON IT TO OTHERS WITHOUT WRITTEN RELEASE BY YORK INTERNATIONAL CORPORATION.

DIMENSIONS ARE IN INCHES DO NOT SCALE TOLERANCES PER ENG. STD. M-282 WELDING PER ENG. STD. M-30 REF. DWG.		PIPING, COMPR. OIL 555		MATERIAL TYPE _____ ENG. STD. _____ PART NO. _____ CUT SIZE _____	
NAME DR. B.L. KNAUB APPR. A.W. OTTO SCALE: N.T.S.	DATE 02-16-09 02-25-09	SIZE D	CAGE NO. 66935	DRAWING NUMBER 381-17402-000	
WT. = _____ LBS.		ORIG. NO. 381-171600		SHEET 1 OF 2	

NOTES:

- USE SEALER 013-03056 ON ALL PIPING JOINTS EXCEPT: TEMPORARY PLUGS, TEMPERATURE & PRESSURE INSTRUMENTS, HEATERS, & BRONZE CHECK VALVES. FOR THESE LISTED ITEMS, USE SEALER 013-02280 PER M-365. USE SEALANT 013-03087 PER M-365 FOR STAINLESS PIPE AND FITTINGS. ALSO USE THIS SEALANT FOR STAINLESS TO CARBON STEEL PIPE AND FITTINGS.
- △ INDICATES RECOMMENDED SPARE PARTS.
- ANNEAL STAINLESS STEEL TUBING FERRULES BY HEATING TO 1200°F AND HOLDING FOR 1-1/4 HOURS IN AIR ATMOSPHERE FURNACE.
- SHOP TO STAMP CONNECTION NUMBER ON HEAD OF PIPE PLUG. EXAMPLE, 12. NO NEED TO STAMP THE LETTER. THEN TAPE THE PLUG HEAD SO THE STAMPING DOES NOT GET PAINTED.



PART NO.	ITEM	QUANTITY PER UNIT	DESCRIPTION
	71		
	72		
	73		
	74		
	75		
	76		
*	023-25059D094	77	1 NIP., PIPE 3/4 SCH 80S X 3 LG
	78		
	79		
*	023-25059D096	80	1 NIP., PIPE 3/4 SCH. 80S X 2-1/2 LG.
*	023-25059D097	81	5 NIP., PIPE 1 SCH. 80S X 3 LG
	82		
	83		
	84		
	85		
*	003-04640C002	86	40 FT. TUBING, 3/4 O.D. .065 WALL
*	003-04640C003	87	50 FT. TUBING 1 O.D. .083 WALL
	88		
	89		
	90		
	91		
	92		
	93		
	94		
	95		
	96		
	97		
	98		
	99		
*	023-25059D098	100	6 NIP., PIPE 3/4 SCH. 80S X 28 LG.
	101		
	102		
021-17222	102	1	BOLT, "U" 1/4-20UNC
001-00566	103	2 FT.	BAR, FLAT 1/4 X 1-1/2
	104		
	105		
	106		
021-14285	107	4	SCR. CAP HEX HD. 1/4-20 X 3/4 LG.
	108		
	109		
021-00451	110	14	NUT, HEX 1/4-20UNC
081-13605B001	111	3	SUPPORT, TUBE
081-13605B002	112	3	SUPPORT, TUBE
	113		
	114		
023-12691	115	6	CLAMP, TUBE 3/4
023-12693	116	9	CLAMP, TUBE 1
	117		
021-08276	118	14	LOCKWASHER, SPRING 1/4
021-09378	119	6	BOLT, "U" 1/4-20UNC
	120		
	121		
021-01467	122	8	SCR., CAP HEX HD. 3/8-16 X 3/4 LG.
	123		
	124		
	125		
	126		
	127		
	128		
021-08288	129	8	LOCKWASHER, SPRING 3/8
	130		
013-03087	131	.1	SEALER, 577
013-02280	132	.1	SEALER, PST 567
013-03056	133	.1	SEALER, 277
000-00000-000	9000	0	DRAWING

PART NO.	ITEM	QUANTITY PER UNIT	DESCRIPTION
* 081-05818B	1	1	MANIFOLD, THERM.
	2		
	3		
	4		
	5		
	6		
* 023-25059D001	7	1	TEE, SCR. 3/4 NPTI
	8		
△ 025-29259	9	1	HEATER
△ 025-16703	10	2	HEATER
	11		
381-17503B	12	1	SUPPORT, DRAIN VALVE
	13		
026-20791	14	1	SIGHTGLASS
* 023-10224-900	15	6	CAP. PIPE 3/4 NPTI
	16		
	17		
* 023-25059D002	18	2	TEE, SCR., 1 NPTI
* 023-25059D003	19	1	TEE, SCR., 1-1/2 NPTI
* 023-25059D028	20	6	ELL., SCR. ST. 90° 3/4 NPTE X 3/4 NPTI
	21		
	22		
	23		
	24		
	25		
	26		
* 023-12747A	27	2	ELL., 90° I T X I NPTE
* 023-11774	28	1	ELL., 90° 3/4 T X 3/4 NPTI
* 023-11772	29	4	ELL., 90° 3/4 T X 3/4 NPTE
	30		
	31		
	32		
	33		
* 023-11781	34	2	CONNR., 3/4 T X 3/4 NPTE
	35		
* 023-16718	36	6	CONNR., I T X I NPTE
	37		
	38		
	39		
	40		
* 023-25059D082	41	2	BUSH., PIPE O.S. HEX 1-1/2 X 1
* 023-25059D081	42	2	BUSH., PIPE O.S. HEX 1 X 3/4
* 023-25059D064	43	1	UNION 1 NPTI
	44		
	45		
	46		
	47		
	48		
	49		
	50		
	51		
	52		
	53		
	54		
* 023-25059D051	55	1	PLUG PIPE SQ. HD. 1 NPTE
* 023-25059D050	56	2	PLUG PIPE SQ. HD. 3/4 NPTE
023-04021	57	1	PLUG, PIPE SQ. HD. 2 NPTE
023-04053	58	11	PLUG, PIPE SQ. HD. 3/4 NPTE
023-04019	59	1	PLUG, PIPE SQ. HD. 1-1/4 NPTE
	60		
	61		
023-04054	62	4	PLUG, PIPE SQ. HD. 1 NPTE
023-03822	63	2	PLUG, PIPE SQ. HD. 1/2 NPTE
023-25059D058	64	4	PLUG, PIPE SOC. HD. 2-1/2 NPTE
023-04020	65	2	PLUG, PIPE SQ. HD. 1-1/2 NPTE
* 023-25059D052	66	1	PLUG, PIPE SQ. HD. 1-1/2 NPTE
* 081-13799A	67	1	ADAPTER, 1-1/4 NPTE X 3/4 NPTI
023-25059D057	68	6	PLUG PIPE SQ. SOC. 1 NPTE
	69		
	70		

REV. LEV.	DATE	REVISION RECORD	CHG. NO.	DR.	CK.
-		NEW	0000		
A	10-20-09	ITEM 7 WAS 023-21828; ITEM 18 WAS 023-21827; ITEM 19 WAS 023-24383; ITEM 20 WAS 023-09973-900; ITEM 41 WAS 023-10449; ITEM 42 WAS 023-07417; ITEM 43 WAS 023-11114; ITEM 55 WAS 023-09177; ITEM 56 WAS 023-10798 AND QTY. 1; ITEM 58 QTY. WAS 12; ITEM 64 WAS	0000	BLK	AWD

REV. LEV.	DATE	REVISION RECORD	CHG. NO.	DR.	CK.
A		CONT 023-05255; ITEM 66 WAS 023-09150; ITEM 68 WAS 023-05909; ITEM 77 WAS 023-20751; ITEM 80 WAS 023-22854; ITEM 81 WAS 023-21792; ITEM 86 003-02696A017; ITEM 87 WAS 003-02696A016; AND ITEM 100 WAS 023-23900.			
B	11-10-09	ITEM 10 WAS 025-34323	0909	BLK	AWD

REV. LEV.	DATE	REVISION RECORD	CHG. NO.	DR.	CK.

YORK INTERNATIONAL CORPORATION
YORK, PA. 17405

* DENOTES STAINLESS STEEL

DIMENSIONS ARE IN INCHES DO NOT SCALE TOLERANCES PER ENG. STD. M-282 WELDING PER ENG. STD. M-30 REF. DWG.		PIPING, COMPR. OIL 555		MATERIAL TYPE _____ ENG. STD. _____ PART NO. _____ CUT SIZE _____	
NAME DR. B.L. KNAUB	DATE 02-16-09	SIZE D	CAGE NO. 66935	DRAWING NUMBER 381-17402-000	
APPR. A. W. OTTO	02-25-09	WT. =	LBS.	ORIG. NO. 381-17160D	SHEET 2 OF 2

CS-08-177539.PIPING.381-17402.SHT2