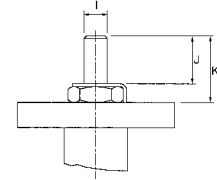
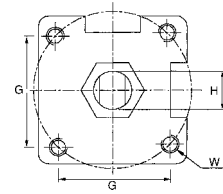
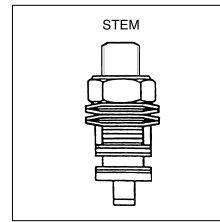
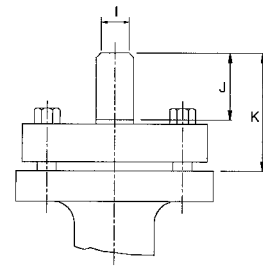
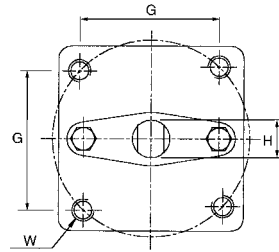


1/2" - 4"

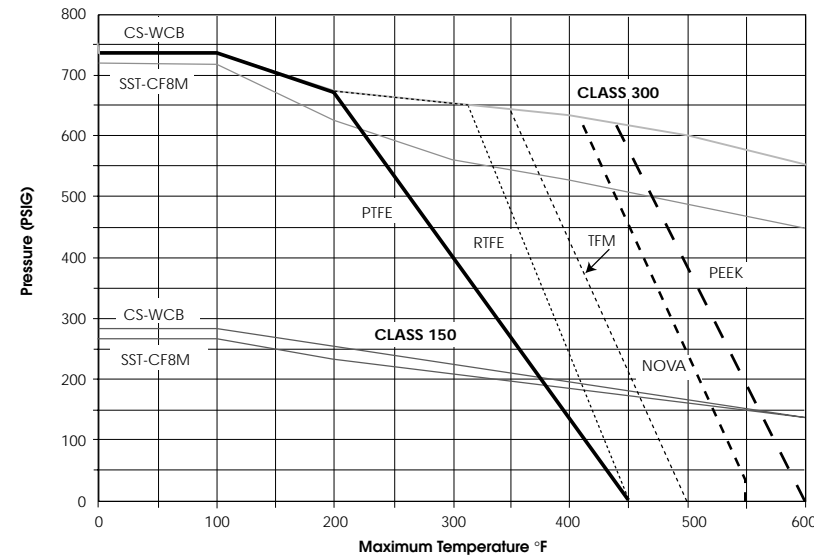


6" - 8"



1/2" - 4"
STEM ARRANGEMENT
FOR ACTUATORS

SEAT PRESSURE/TEMPERATURE RATING SERIES 50



HOW TO ORDER

VALVE SIZE	VALVE SERIES	CLASS	ALLOY	SEATS	OPTIONS
1/2"	50	150# = 11	2 = Alloy 20	T = TFE	X = Oxygen Service
3/4"			4 = Carbon Steel	R = RTFE	OH = Oval Handle
1"			6 = Stainless Steel	N = NOVA	F = Fugitive Emissions
1-1/2"			5 = Hastelloy C	P = Peek	Certified ANSI 593.00.01
2"			3 = Monel	M = TFM™	E = Extended Stem
2-1/2"					L = Lockable Extended Stem
3"					D = Leak detection Stem
4"					GO = Gear Operator
6"			7 = 17-4PH Stem		
8"			A = Nace		

3/4" 50 11 6 T X

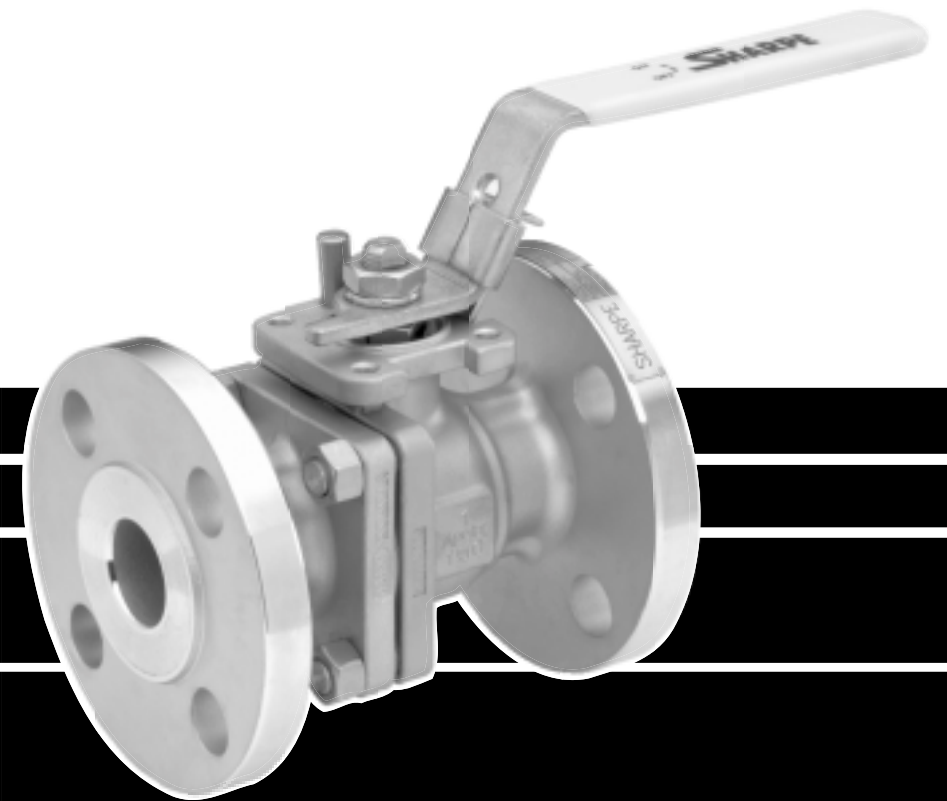
SHARPE VALVES

A DIVISION OF **Sharon**

Toll-Free 1-877-7SHARPE
E-Mail: sharpediv@aol.com
www.sharpevalves.com

504 West Wrightwood Ave.
Elmhurst, IL 60126

SHARPE® VALVES

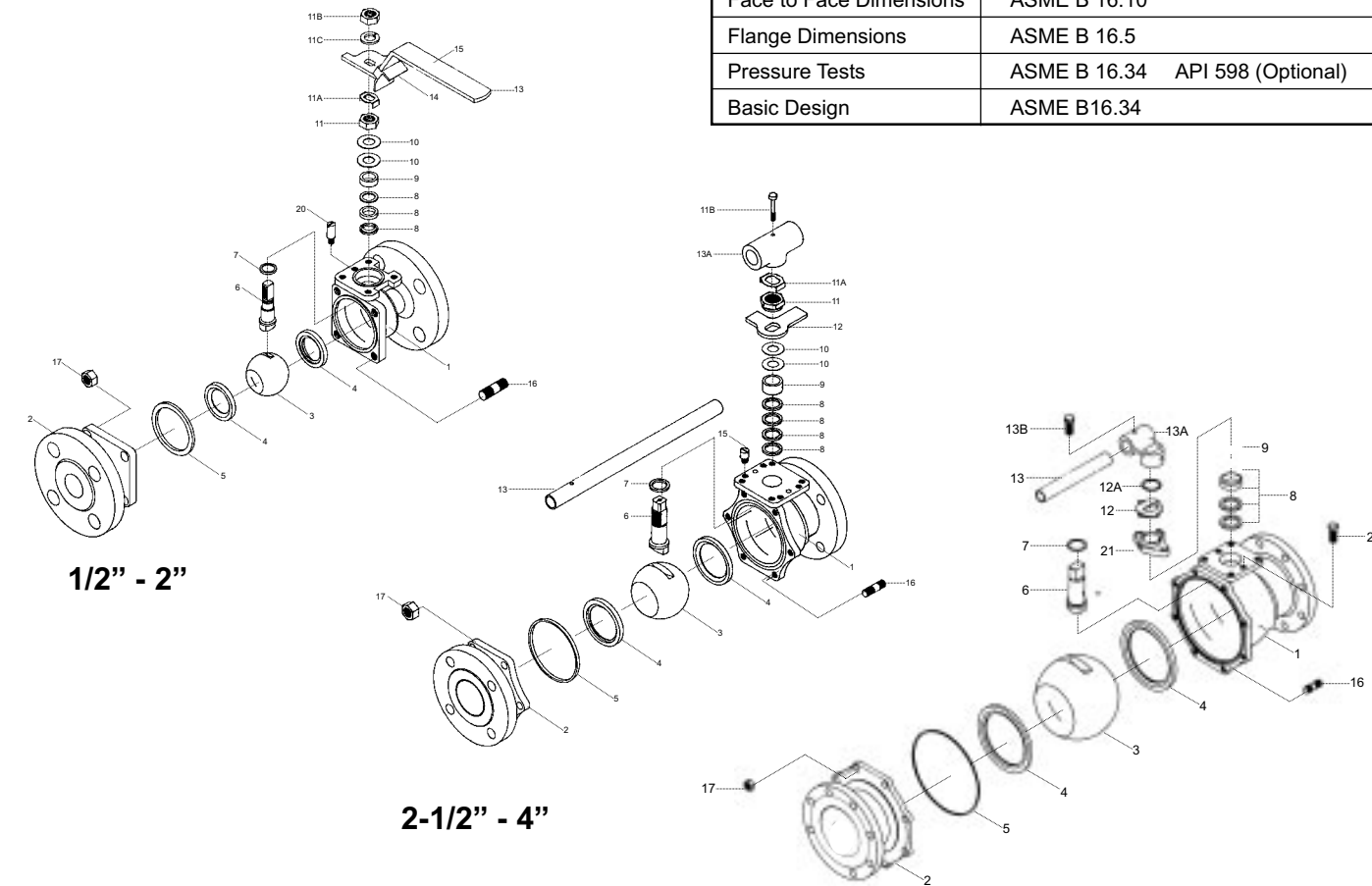


**FLANGED FULL PORT
BALL VALVE
SERIES 50 / CLASS 150**

**SERIES 50
VALVE PARTS AND IDENTIFICATION**

**CLASS 150
BLOW OUT PROOF STEM
LOCKING DEVICE**

APPLICABLE STANDARDS	
Wall Thickness	ASME B 16.34
Face to Face Dimensions	ASME B 16.10
Flange Dimensions	ASME B 16.5
Pressure Tests	ASME B 16.34 API 598 (Optional)
Basic Design	ASME B16.34



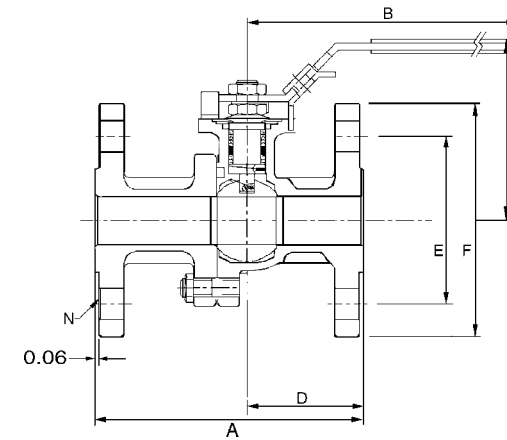
PART NO.	PART	QTY.	MATERIAL
1	Body	1	316 Stainless Steel Alloy 20 Carbon Steel Hastelloy C Monel
2	End Connector	1	316 Stainless Steel Alloy 20 Carbon Steel Hastelloy C Monel
3	Ball	1	316 Stainless Steel Alloy 20 Hastelloy C
4	Seat	2	TFM(Super TFE) NOVA
5	Body Seal	1	TFE
6	Stem	1	316 Stainless Steel Alloy 20 Hastelloy C 17-4PH (Option)
7	Thrust Bearing	2	Reinforced TFE
8	Stem Packing	3/4	Reinforced TFE
9	Gland Packing	1	304 Stainless Steel
10	Belleville Washer (1/2"-4")	2/4	304 Stainless Steel
11	Packing Nut (1/2"-4")	1	304 Stainless Steel
11A	Lock Tab	1	Stainless Steel
11B	Handle Nut	1	304 Stainless Steel
11C	Lock Washer	1	304 Stainless Steel (1/2"-2")

PART NO.	PART	QTY.	MATERIAL
12	Stopper	1	304 Stainless Steel
12A	Snap Ring	1	Stainless Steel (6"-8")
13	Handle	1	304 Stainless Steel (1/2"-2") Galvanized Steel (2-1/2"-4") Ductile Iron (6"-8")
13A	Wrench Block	1	Stainless Steel
13B	Hex Head Bolt	1	304 Stainless Steel
14	Locking Device (1/2"-2")	1	304 Stainless Steel
15	Sleeve	1	Vinyl
16	Body Stud	SEE* N	A193 A193
17	Nut	SEE* N	A194 A194
20	Stop Pin (1/2"-2") (2-1/2"-4")	1 2	304 Stainless Steel 304 Stainless Steel
21	Gland Flange (6"-8")	1	304 Stainless Steel
22	Gland Bolts (6"-8")	2	304 Stainless Steel

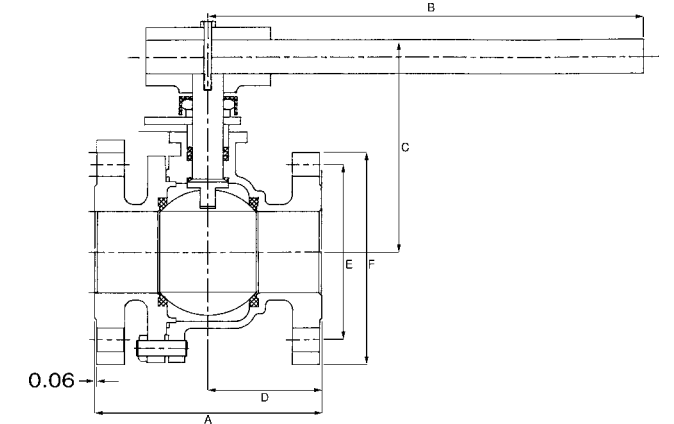
*See Dimensions

**SERIES 50
DIMENSIONS**

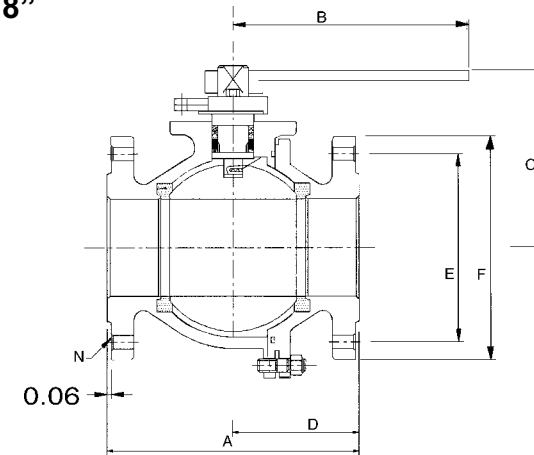
1/2" - 2"



2-1/2" - 4"



6" - 8"



CV DATA		PORT		WEIGHT (lbs.)	
1/2"	26	1/2"	0.59	1/2"	4
3/4"	50	3/4"	0.78	3/4"	6
1"	94	1"	1.00	1"	8
1-1/2"	260	1-1/2"	1.50	1-1/2"	15
2"	480	2"	2.00	2"	20
2-1/2"	750	2-1/2"	2.55	2-1/2"	36
3"	1300	3"	3.00	3"	45
4"	2300	4"	4.00	4"	75
6"	5400	6"	6.00	6"	135
8"	10000	8"	7.88	8"	290

SIZE	A	B	C	D	E	F	N	G	H	I	J	K	W
1/2"	4.25	4.75	3.60	1.80	2.38	3.50	4	1.39	3/8-24 UNF	.22	.28	.63	M5
3/4"	4.62	4.75	3.75	2.00	2.75	3.85	4	1.39	3/8-24 UNF	.22	.28	.63	M5
1"	5.00	6.22	3.75	2.12	3.13	4.25	4	1.39	7/16-20 UNF	.30	.30	.90	M6
1-1/2"	6.50	9.00	4.50	2.76	3.56	5.00	4	1.94	9/16-18 UNF	.35	.42	1.18	M8
2"	7.00	9.00	4.80	3.08	4.75	6.00	4	1.94	9/16-18 UNF	.35	.42	1.18	M8
2-1/2"	7.50	13.75	6.70	3.09	5.50	7.00	4	2.84	M20	.55	.55	1.83	M10
3"	8.00	13.75	7.00	3.74	6.00	7.48	4	2.84	1-14 UNS	.745	.66	1.83	M10
4"	9.00	13.75	7.70	4.46	7.50	9.01	8	2.84	1-14 UNS	.745	.66	1.83	M10
6"	15.50	38.97	11.22	7.61	9.50	10.98	8	3.89	1.02	1.64	1.46	3.00	M12
8"	18.00	38.97	11.57	8.34	11.75	13.50	8	4.59	1.02	1.64	1.46	3.00	M12