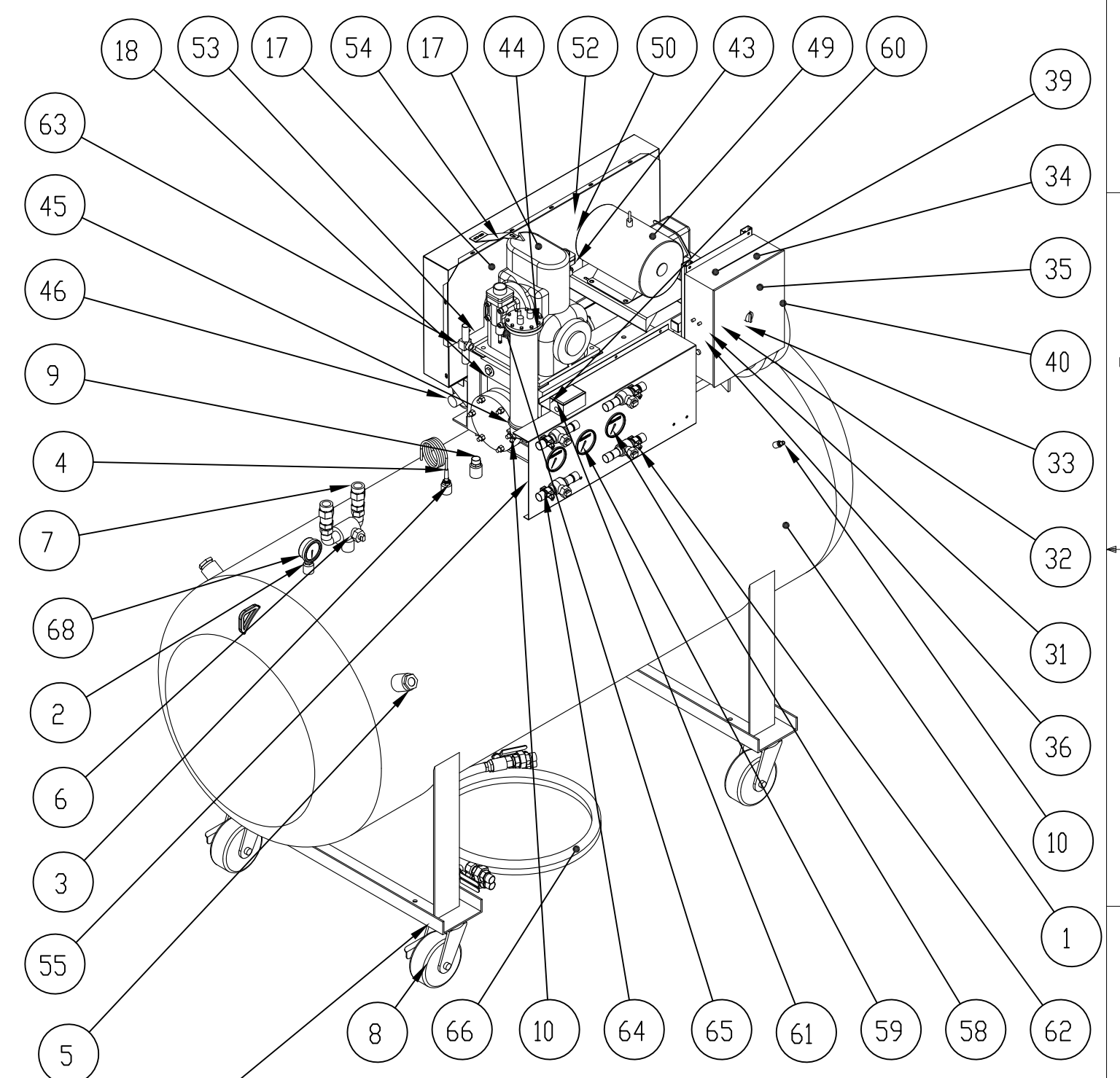


ITEM NO.	VENDOR No	YORK No	DESCRIPTION	QTY.
1			Tank, Freon Recovery 42x112	1
2			Bushing, 3/4" x 1/8" NPT	1
3			Float Level Switch, 11 1/2"	1
4			Cable, Fluid Level- 6'	1
5			Sight Glass, BP 52	2
6			Valve, 3 way 1"	1
7			Pressure Relief Valve, 1"	2
8			Channel, wheel mouting	2
8			Caster 8. W/Brake	2
8			Caster 8. No brake	2
9			Pipe Adaptor, Straight 1" Sweat	1
10			Valve, Schrader 1/4 NTP	2
14			Plug 3/8" NTP	1
15			Plug 3/4" NTP	1
16			Frame	1
17			Compressor	1
18			Blissfield Condenser	1
19			Catch-All Angle	1
28			NEMA 4 Starter Box	1
29			Connector, Strain Relief	1
30			Panel Back	1
31			Fuse Block, Midget 1/4	1
32			Fuse Block, Midget 6/10	1
33			Transformer 480 V	1
34			Starter, Y Delta- 10 hp	1
35			Heater, Starter 460v	3
36			Relay, float	1
37			Contact Block	1
38			Knob, 2 Position	1
39			High Pressure Cut-Out	1
40			SOOW Cord 12/4	1
41			Plug, 4 pin, Locking	1
42			Receptical, 4 pin, Locking	1
43			Service Valve	1
44			Oil Separator 19x4	1
45			Heater, Oil Separator	1
46			Catch-All Filter, 4-Core	1
47			Core Filter, Catch-All	4
48			Bracket, guard support right	2
49			Motor, 10HP	1
50			Sheave	1
51			Bushing	1
52			Belt, 74" B71	4
53			Guard, Belt main	1
55			Panel, Gauges	1
57			Clamp, 4" Cond/EMT	2
58			Discharge Gauge, Red	2
59			Suction Gauge, Red	1
60			Outlet Box, Single Gang	1
61			Cover, Blank Single-Gang	1
62			Conduit Hanger, 1"	4
63			See-All, Wet-Dryl, 1"	1
64			Valve, Ball 1-1/8	4
65			Valve, Pressure Relief, 1/2'	1
66			Hose, hydraulic w/1" Male	2
66			Union, 1" NTP F/F	4
67			Pallet Standard Shown with Optional Wheel Package	1
68			Pressure Gauge, Red	1

REVISIONS				
ZONE	REV.	DESCRIPTION	DATE	APPROVED
	A	Initial Release	12/30/05	



TITLE: Refrigerant Storage Recycling, 4445

	SIZE B	RSR 4445	REV 0.0
	SCALE: 1:20	WEIGHT:	SHEET 1 OF 2

DATE 12/27/2005

8 7 6 5 4 3 2 1

D

D

C

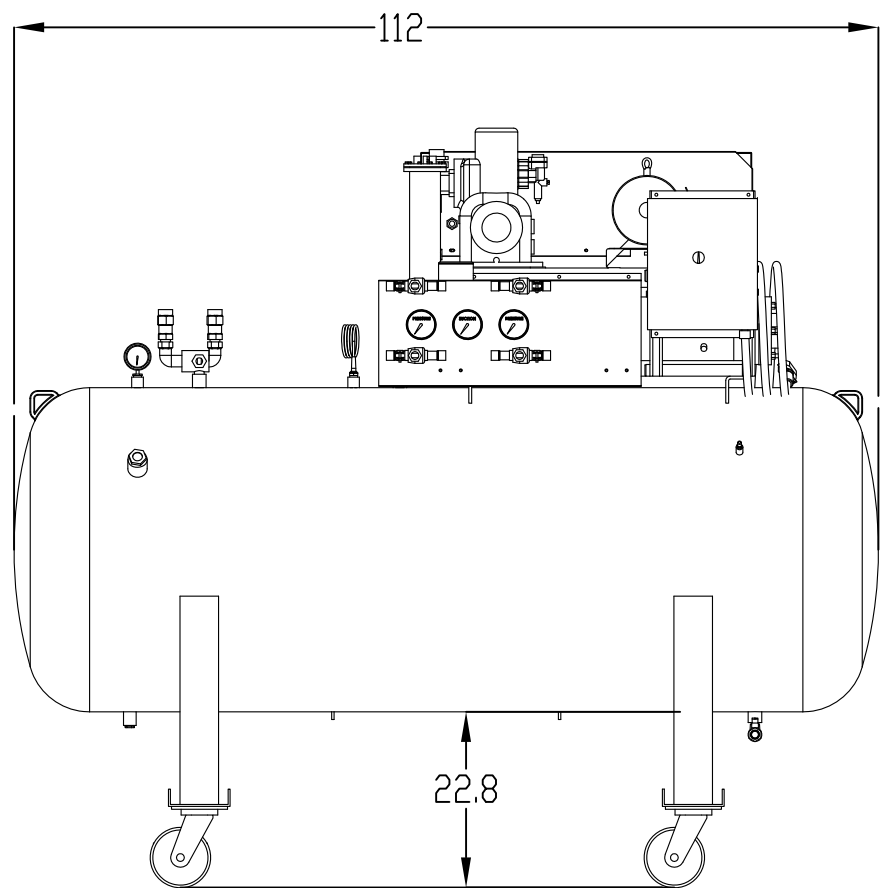
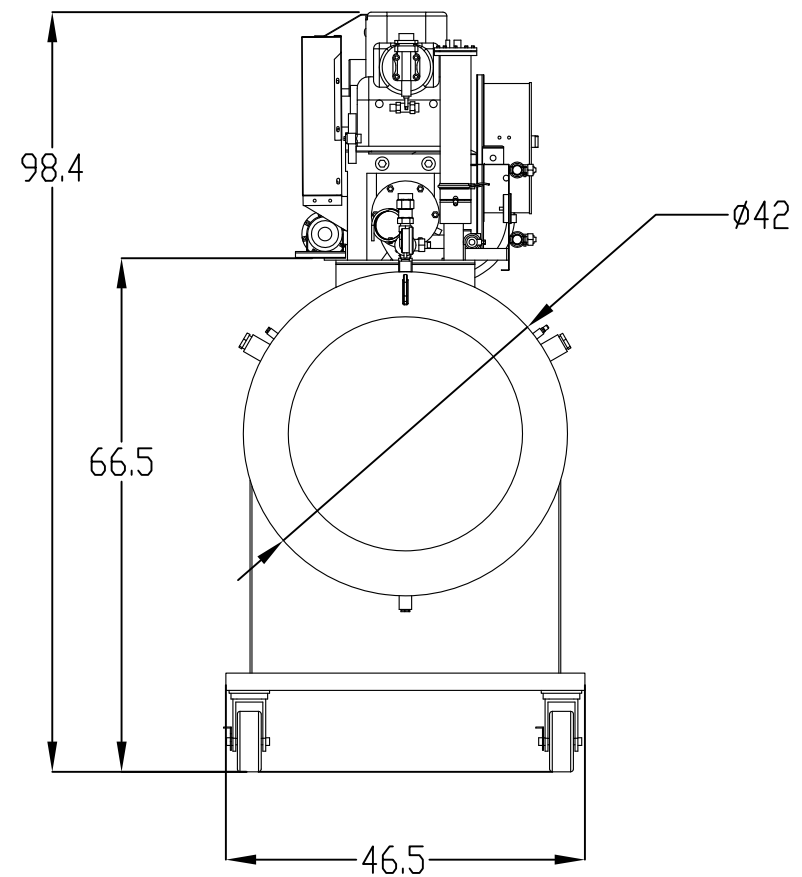
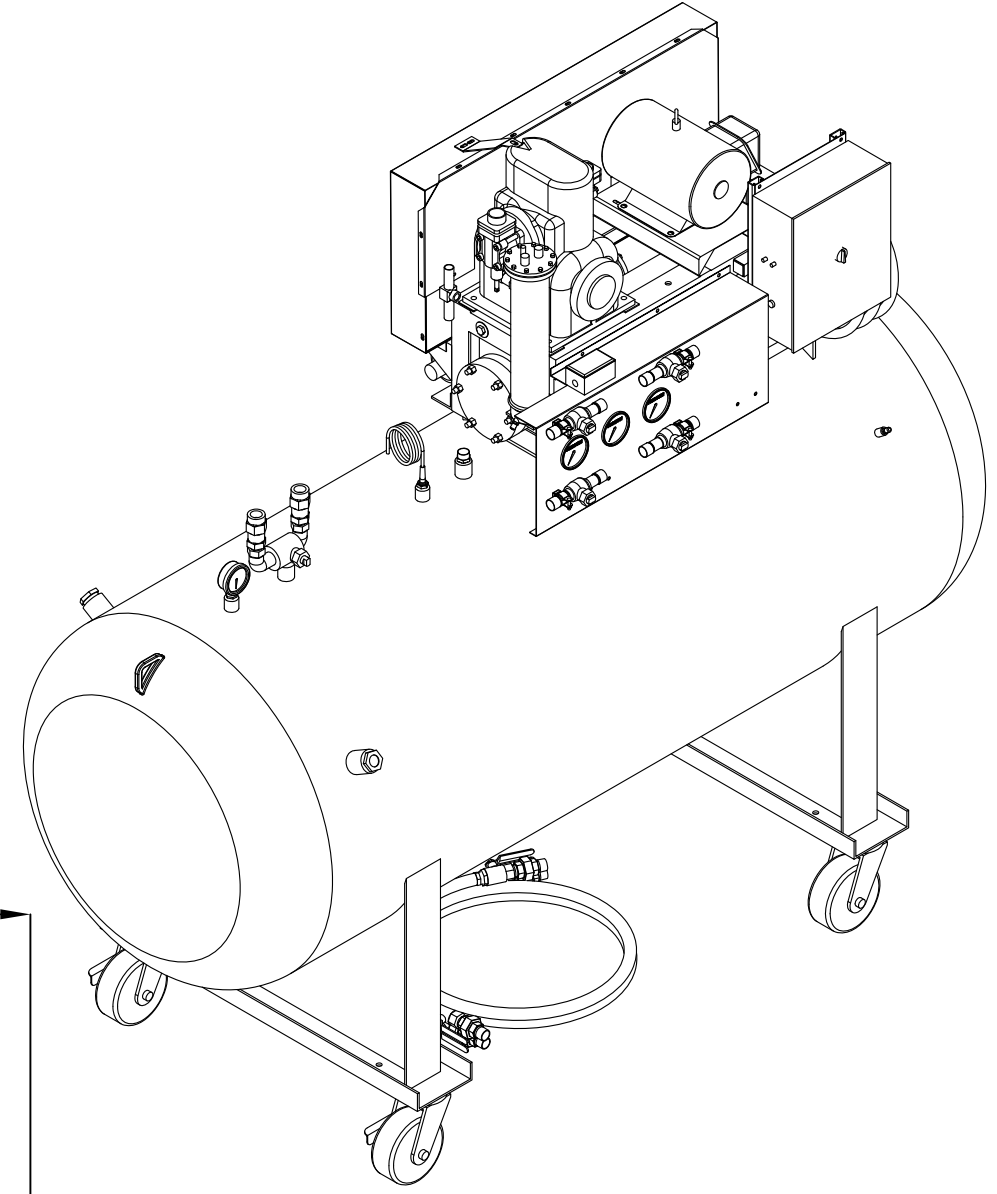
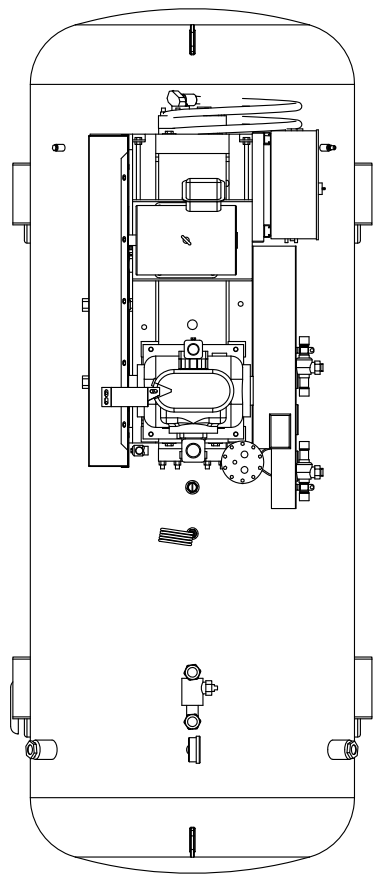
C

B

B

A

A



TITLE:

DATE 12/27/2005



SIZE B	RSR 4445	REV
SCALE: 1:25	WEIGHT:	SHEET 2 OF 2

8 7 6 5 4 3 2 1