

ITEM	A	B	C	D	E	F	G	H
01	0	0	0	11 (0.43)	0	331.5 (13.05)	485 (19.09)	1000 (39.37)
02	0	0	0	13 (0.51)	0	331.5 (13.05)	485 (19.09)	1000 (39.37)
03	0	0	0	17 (0.67)	0	331.5 (13.05)	485 (19.09)	1000 (39.37)
04								
05								
06								

- (L) LIGHTNING ARRESTER
- (S) SURGE CAPACITOR
- (X) DIFFERENTIAL CURRENT TRANSFORMER
- (Y) METERING CURRENT TRANSFORMER
- (Z) HEATER

FOR APPROVAL

Please confirm or comment, and return within 7 business days. Otherwise, these drawings will be deemed as certified and approved.

Approved by :

DWN.	C. LEONG	APR.14.2009
CHKD.	S. WANG	APR.14.2009
APPD.	C. WANG	APR.14.2009

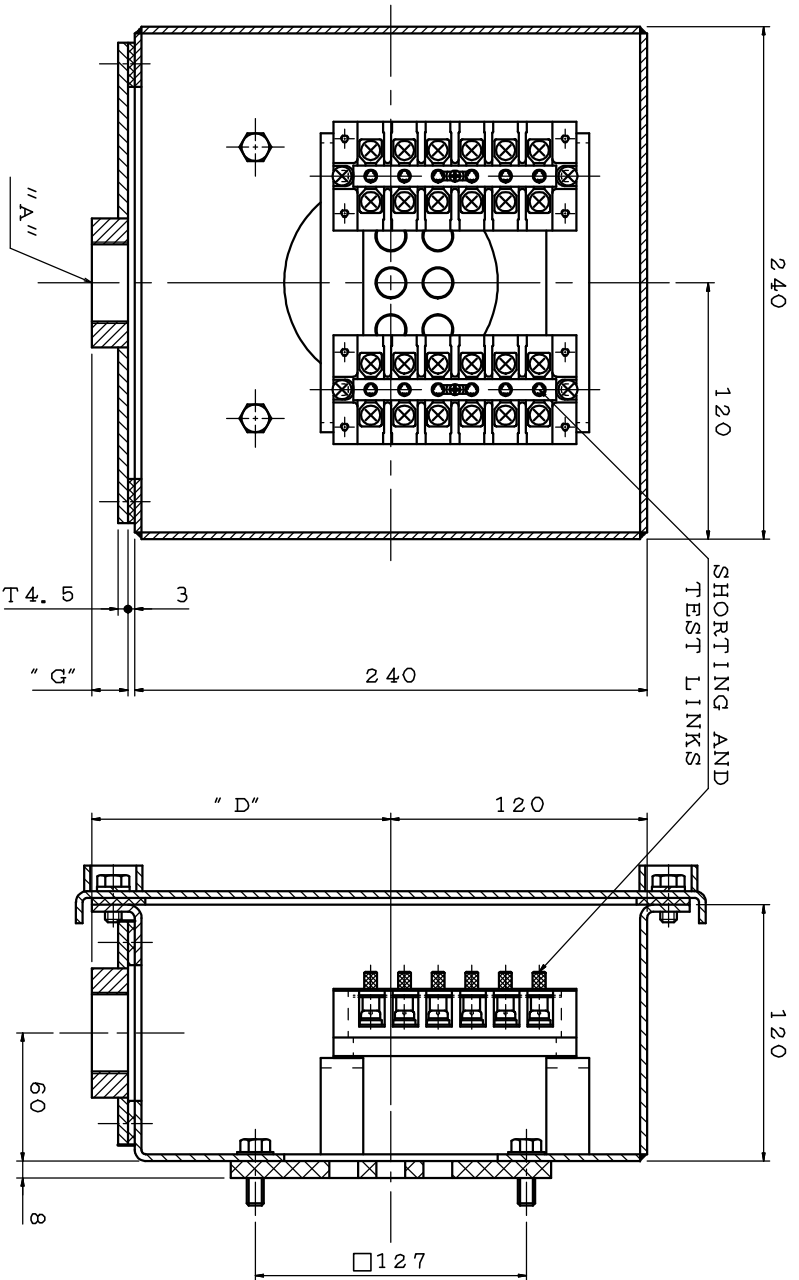
DATE
DEC.22.2009

SCHEMATIC DRAWING
TERMINAL BOX

TECO Westinghouse

DWG NO. 3B040W031
REV:01

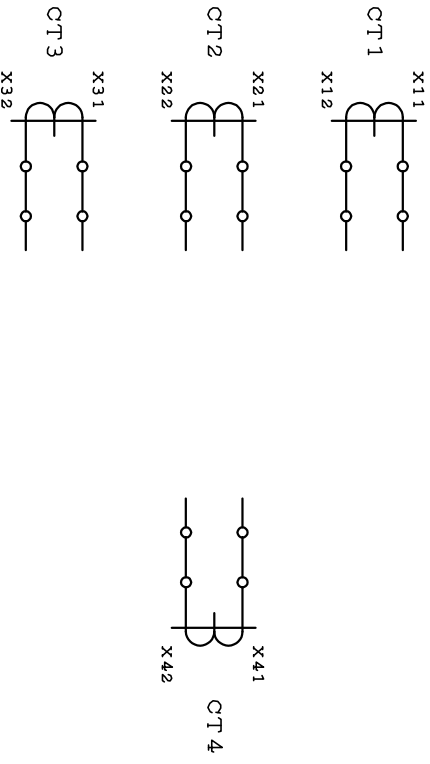
- NOTE:
- DIMENSIONS IN MM(INCHES).
 - PRIMARY T-BOX
 - ORDER NO. FDO94211T1
FD103212T1.



ITEM	A	D	G
01	0	127.5 (5.02)	4.5 (0.18)
02	NPT1"	143 (5.63)	20 (0.79)
03	NPT1.5"	143 (5.63)	20 (0.79)
04	NPT2"	143 (5.63)	20 (0.79)
05			
06			
07			
08			
09			
10			

DIFFERENTIAL CURRENT TRANSFORMER

METERING CURRENT TRANSFORMER



- NOTE:
1. DIMENSION IN MM.
 2. CURRENT TRANSFORMER T-BOX.
 3. ORDER NO. FD094211T1
FD103212T1.

FOR APPROVAL

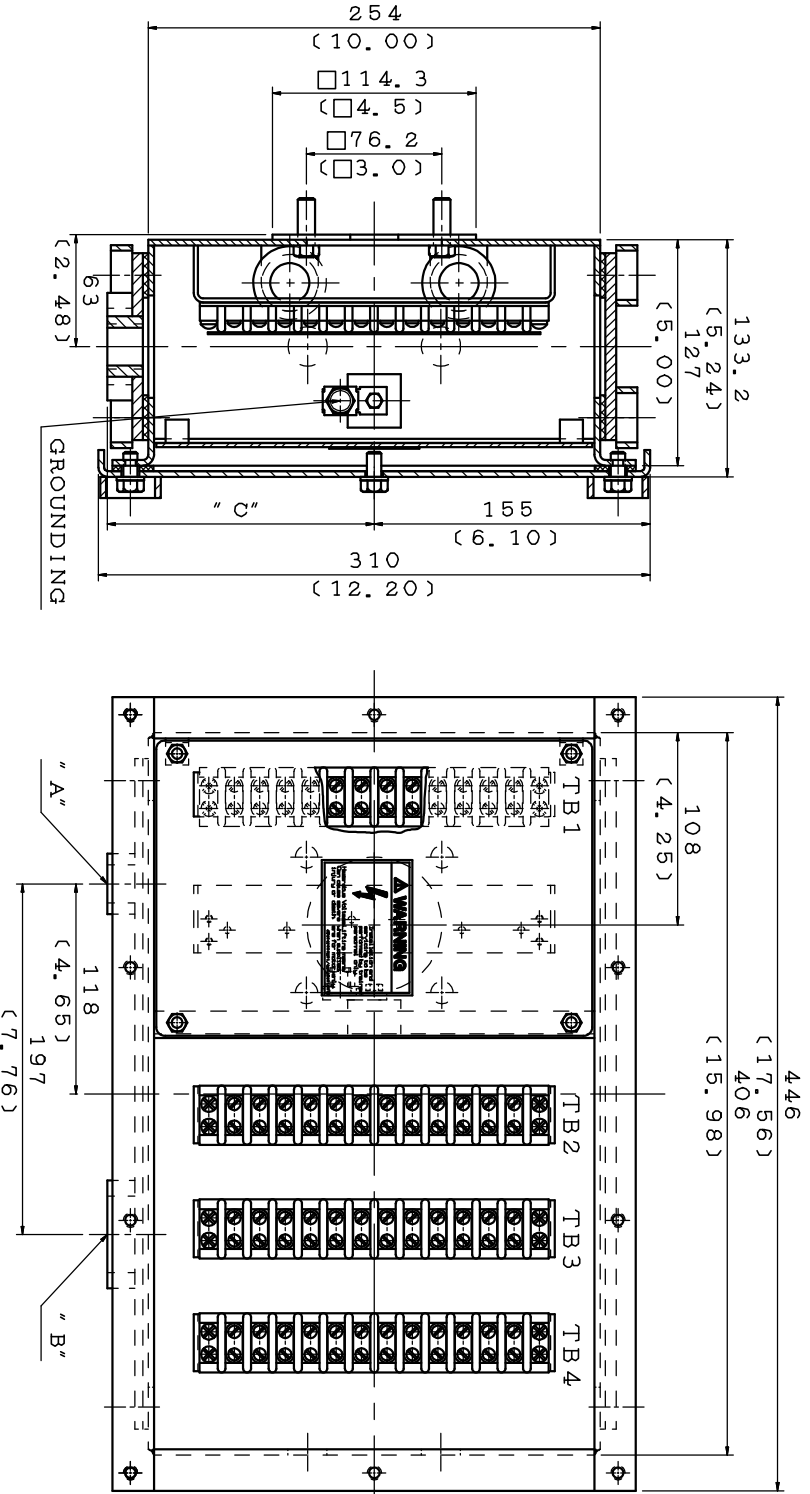
Please confirm or comment, and return within 7 business days. Otherwise, these drawings will be deemed as certified and approved.

Approved by: _____
Order No. _____

DWNL.	E. SU	MAY*17*2006
CHKD.	C. SHIH	JUN*07*2006
APPD.	C. WANG	JUN*08*2006

DATE	DEC.22.2009	SCHEMATIC DRAWING
		TERMINAL BOX
TECO Westinghouse	DWG NO.	3 B040M363
	REV:01	

ITEM	A	B	C
01	0	0	136 (5.35)
02	NPT0.75"	NPT1.5"	150 (5.91)
03			
04			
05			
06			

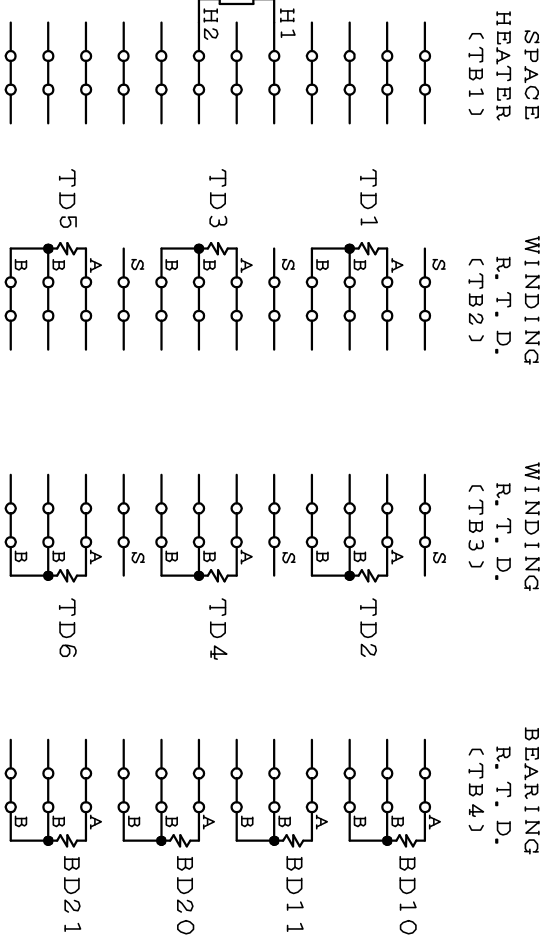


FOR APPROVAL

Please confirm or comment, and return within 7 business days. Otherwise, these drawings will be deemed as certified and approved.

Approved by :
Order No.

- NOTE:
1. DIMENSIONS IN MM(INCHES).
2. WINDING R.T.D., BEARING R.T.D. & SPACE HEATER T-BOX.
3. H1 & H2 FOR SPACE HEATER
BD10 & BD11 FOR DRIVE END BEARING
BD20 & BD21 FOR NON-DRIVE END BEARING
TD1 & TD2 FOR U PHASE
TD3 & TD4 FOR V PHASE
TD5 & TD6 FOR W PHASE
4. ORDER NO. FD094211T1
FD103212T1.

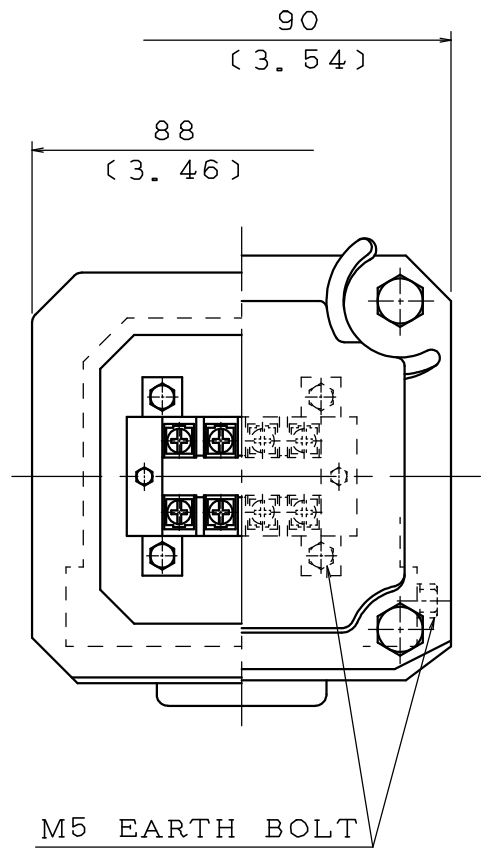
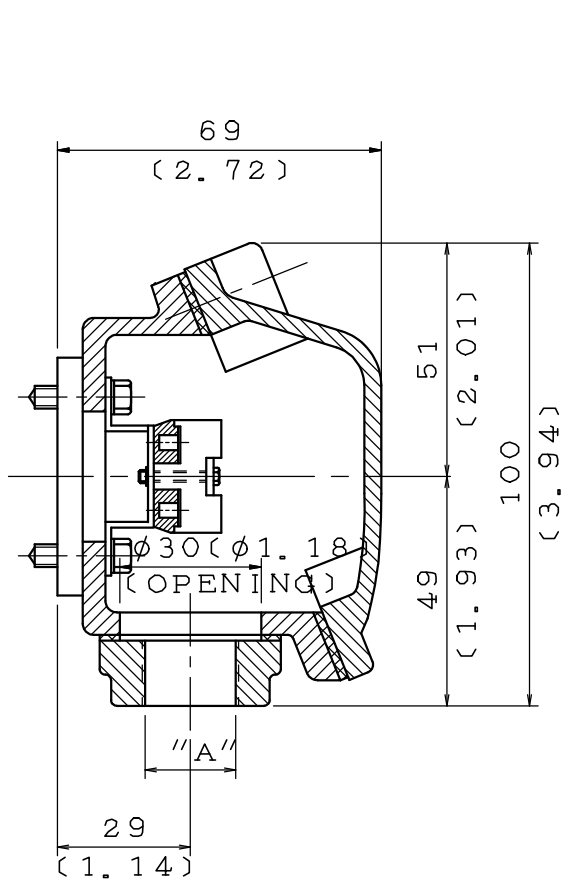


DATE	DEC.22.2009	SCHEMATIC DRAWING	
CHKD.	C. SHIH	JAN.14.2009	
APPD.	C. WANG	JAN.15.2009	
DWG. NO.		3B040Z685	
REV. :00			

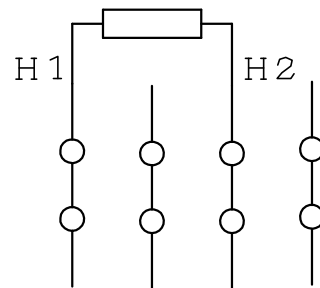
TECO Westinghouse

TERMINAL BOX

DATE DEC.21.2009	SCHMATIC DRAWING	MODEL
	TERMINAL BOX	



ITEM	A
01	M20×1.5
02	M25×1.5
03	PF-0.5"
04	PF-0.75"
05	PT-0.5"
06	PT-0.75"
07	NPT-0.5"
08	NPT-0.75"
09	NPT-1"
10	0



FOR APPROVAL

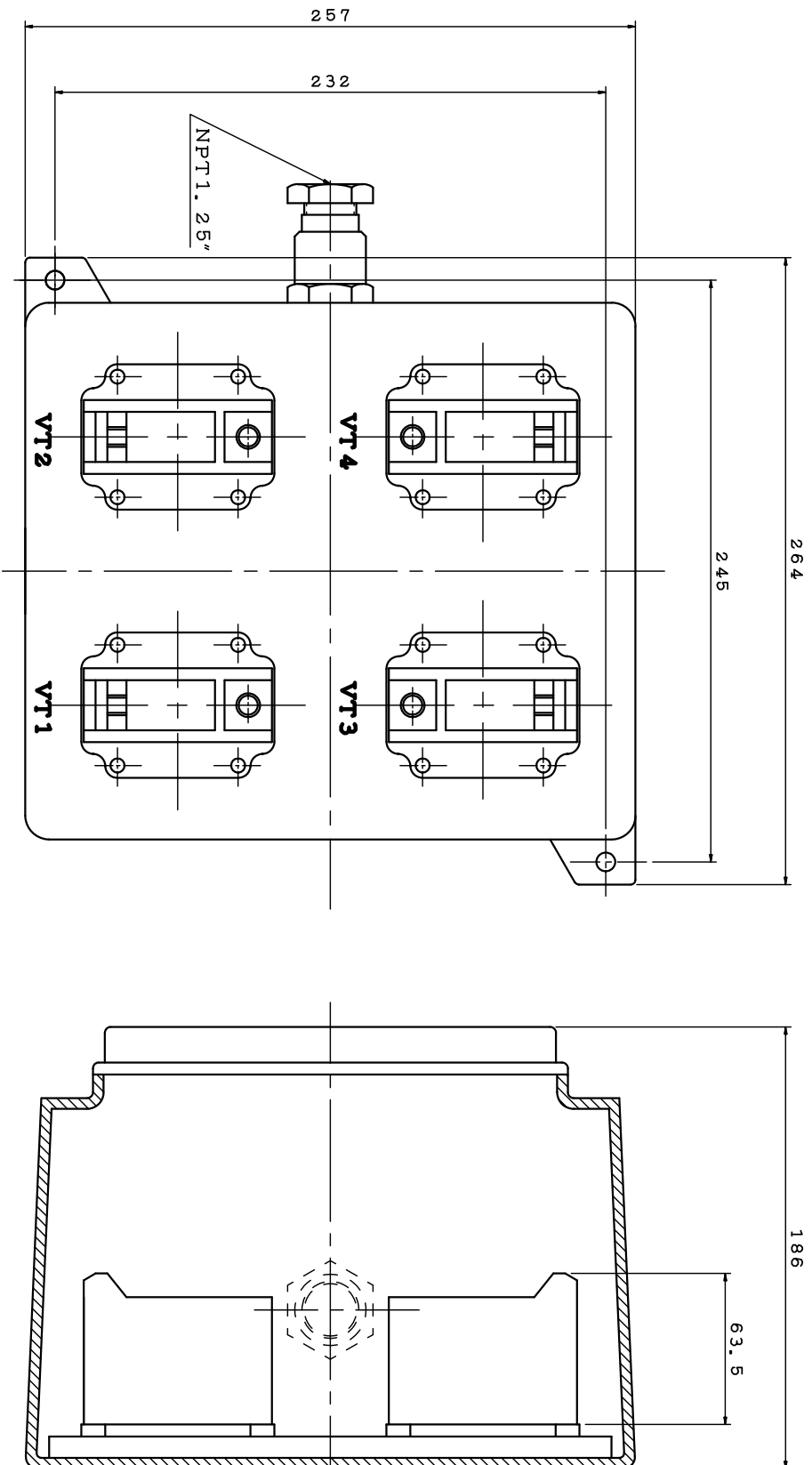
Please confirm or comment, and return within 7 business days. Otherwise, these drawings will be deemed as certified and approved.

Approved by :
Order No.

NOTE :

1. DIMENSIONS IN MM (INCHES).
2. TX-05A
3. SPACE HEATER T-BOX.
4. ORDER NO. FD094211T1
FD103212T1.

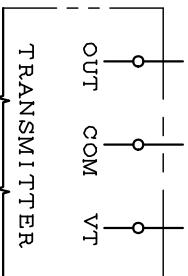
DWN.	C. LEONG	JUL•06•2000	TECO Westinghouse	DWG NO.	REV:03
CHKD.	B. YANG	JUL•10•2000		3A040D602	
APPD.	T. CHEN	JUL•10•2000			



FOR APPROVAL

Please confirm or comment, and return within 7 business days. Otherwise, these drawings will be deemed as certified and approved.

Approved by :
Order No.



DWNL.	E. SU	JAN. 15. 2010
CHKD.	C. SHIH	JAN. 15. 2010
APPD.	B. YANG	JAN. 15. 2010

DATE
JAN. 18 2010

SCHEMATIC DRAWING
TERMINAL BOX

TECO Westinghouse

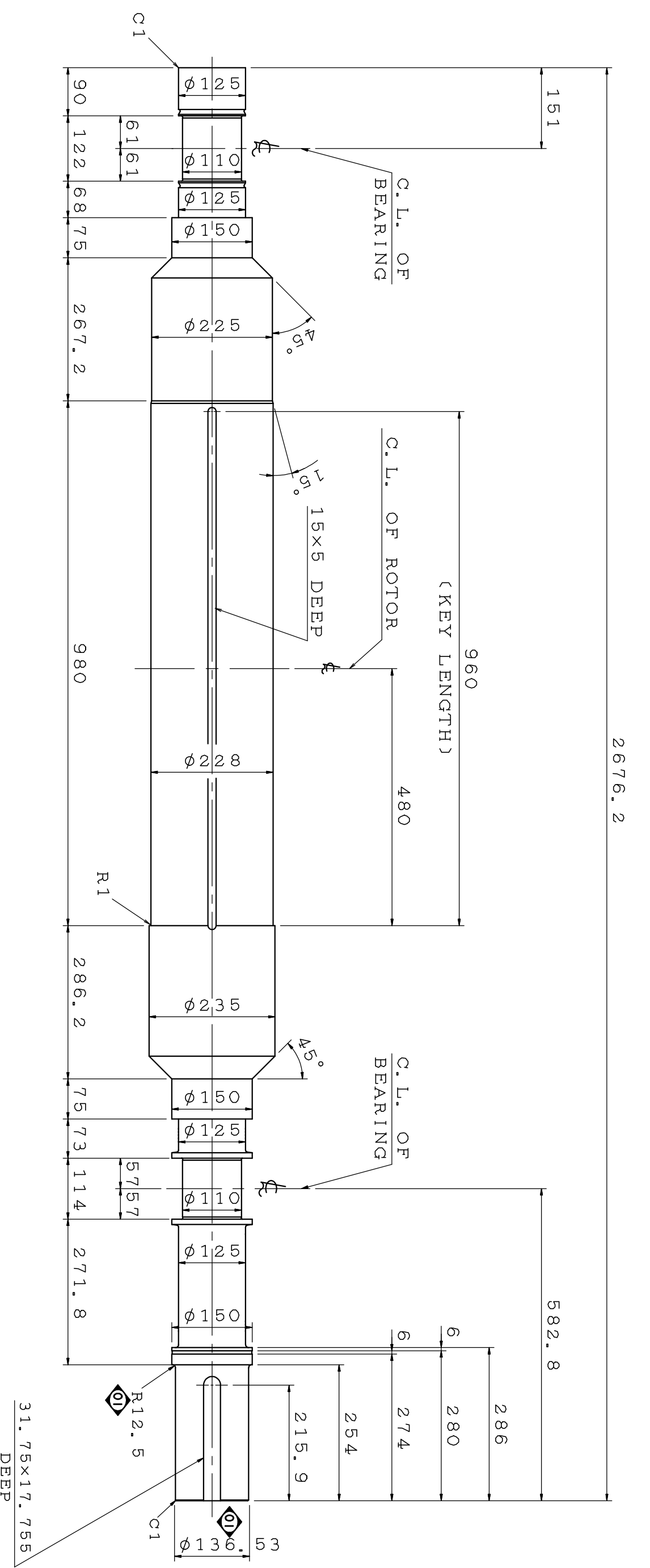
DWG NO. 4A040H586
REV:00

- NOTE: 1. DIMENSIONS IN MM.
2. BENTLY NEVEDA PROXIMITOR T-BOX.
3. VT1 & VT2 FOR NON-DRIVE END
VT3 & VT4 FOR DRIVE END.
4. ORDER NO. FD094211T1.

FD103212T1

NON-DRIVE END

DRIVE END



TORSIONAL ANALYSIS DATA

MOTOR WR²: 75.1 KG-M²

SHAFT TORSIONAL STIFFNESS: 2.62 E08 KG-MM/RADIAN
(FROM ROTOR CENTERLINE TO COUPLING END OF SHAFT) (FOR REFERENCE ONLY)

SHAFT MATERIAL: JIS G 4105 SCM440 (AISI 4140 EQUIV.)

SHAFT ULTIMATE TENSILE STRENGTH: 100 KG/MM² MIN

SHAFT YIELD STRENGTH IN TENSION: 85 KG/MM² MIN

SHAFT SHEAR MODULUS OF RIGIDITY: 8300 KG/MM²

NOTE:

1. DIMENSIONS IN MM.
2. ORDER NO. FD094211T1
FD103212T1.

FOR APPROVAL

Please confirm or comment, and return within 7 business days. Otherwise, these drawings will be deemed as certified and approved.

Approved by:

DWN.	C. LEONG	DEC.12.2008
CHKD.	C. SHIH	JAN.14.2009
APPD.	C. WANG	JAN.15.2009

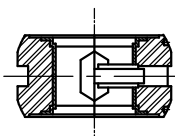
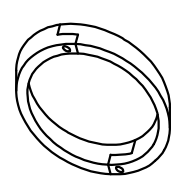
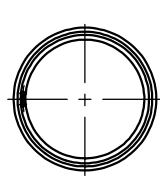
DATE	DEC.22.2009	SCHEMATIC DRAWING
SHAFT		
DWG NO.	3B040T635	REV:01



6 5 4 3 2 1

A

A

PART NAME	SKETCH	ITEM	SPEC.	QUANTITY		PART NUMBER
				WORKING FOR 1 SET	TOTAL (PCS/UNIT)	
SLEEVE BEARING		1	D. E. BRG SIZE #11-110	1	1	3A231C0151600
		2	N. D. E. BRG SIZE #11-110	1	1	3A231C0151600
OIL RING		3	D. E. BRG SIZE #11-110	1	1	3A236C0250108
		4	N. D. E. BRG SIZE #11-110	1	1	3A236C0250108
FLOATING LABYRINTH SEAL		5	D. E. BRG SIZE #11	2	2	3A206C0080301
		6	N. D. E. BRG SIZE #11	1	1	3A206C0080301

FOR APPROVAL

Please confirm or comment, and return within 7 business days. Otherwise, these drawings will be deemed as certified and approved.

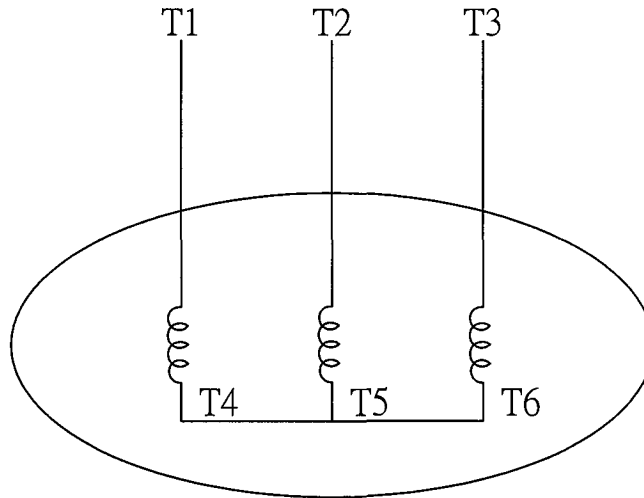
Approved by: _____
Order No. _____

CUSTOMER: TWMC
MACHINE: 4P-4000HP COMPRESSOR MOTOR
ORDER NO.: FD094211T1X6
FD103212T1X5

DWNL.	C. LEONG	DEC*12*2008
CHKD.	C. SHIH	JAN*14*2009
APPD.	C. WANG	JAN*15*2009

DATE	DEC.22.2009	SCHEMATIC DRAWING
SPARE PARTS LIST		
TECO Westinghouse		
DWG NO.	3 B040Z687	REV:00

DATE DEC.22.2009	SCHEMATIC WYE CONN 6 LEADS	MODEL

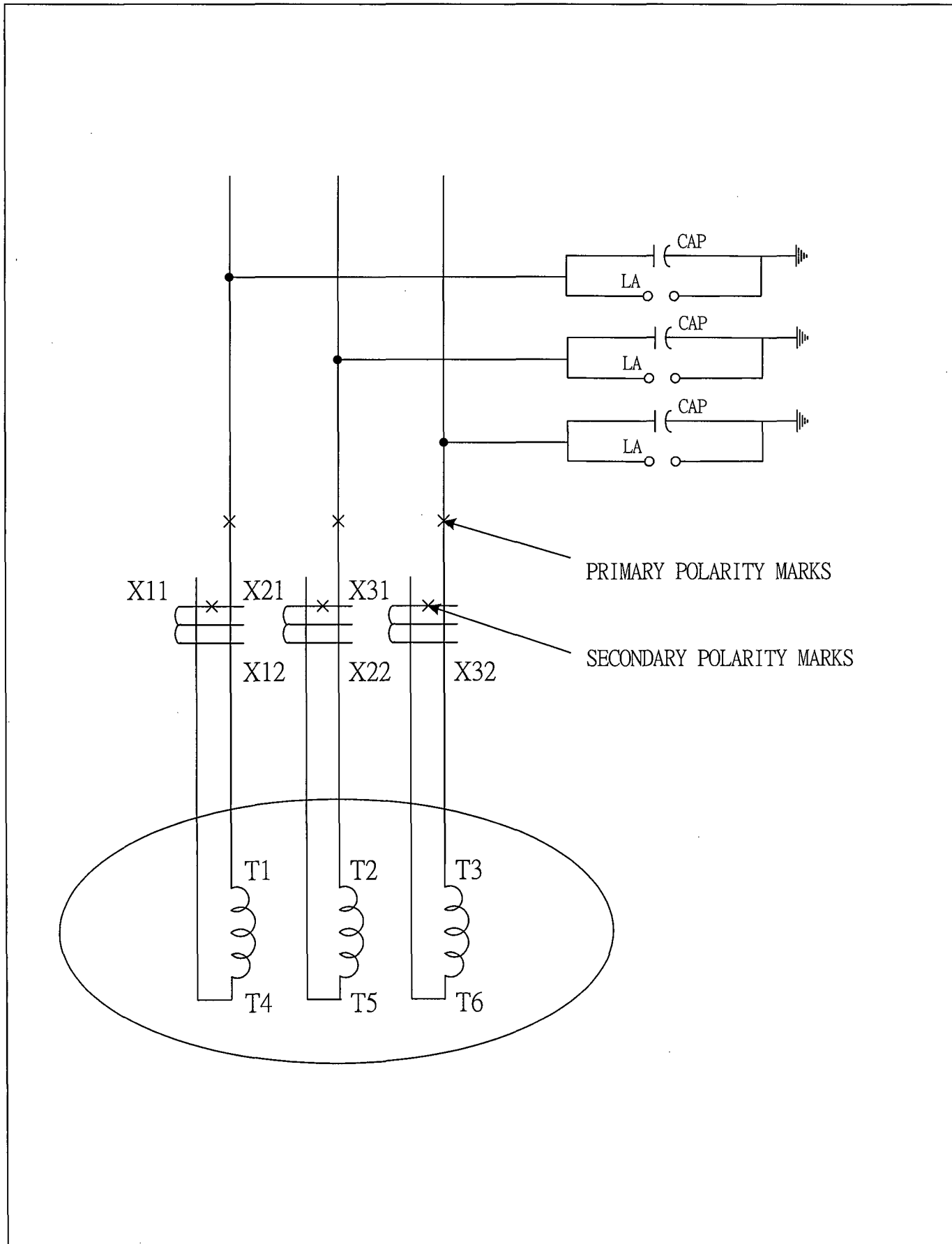


SCHEMATIC - WYE CONN - 6 LEADS

CONNECTION	ROTATION (VIEWED FROM DRIVE END)

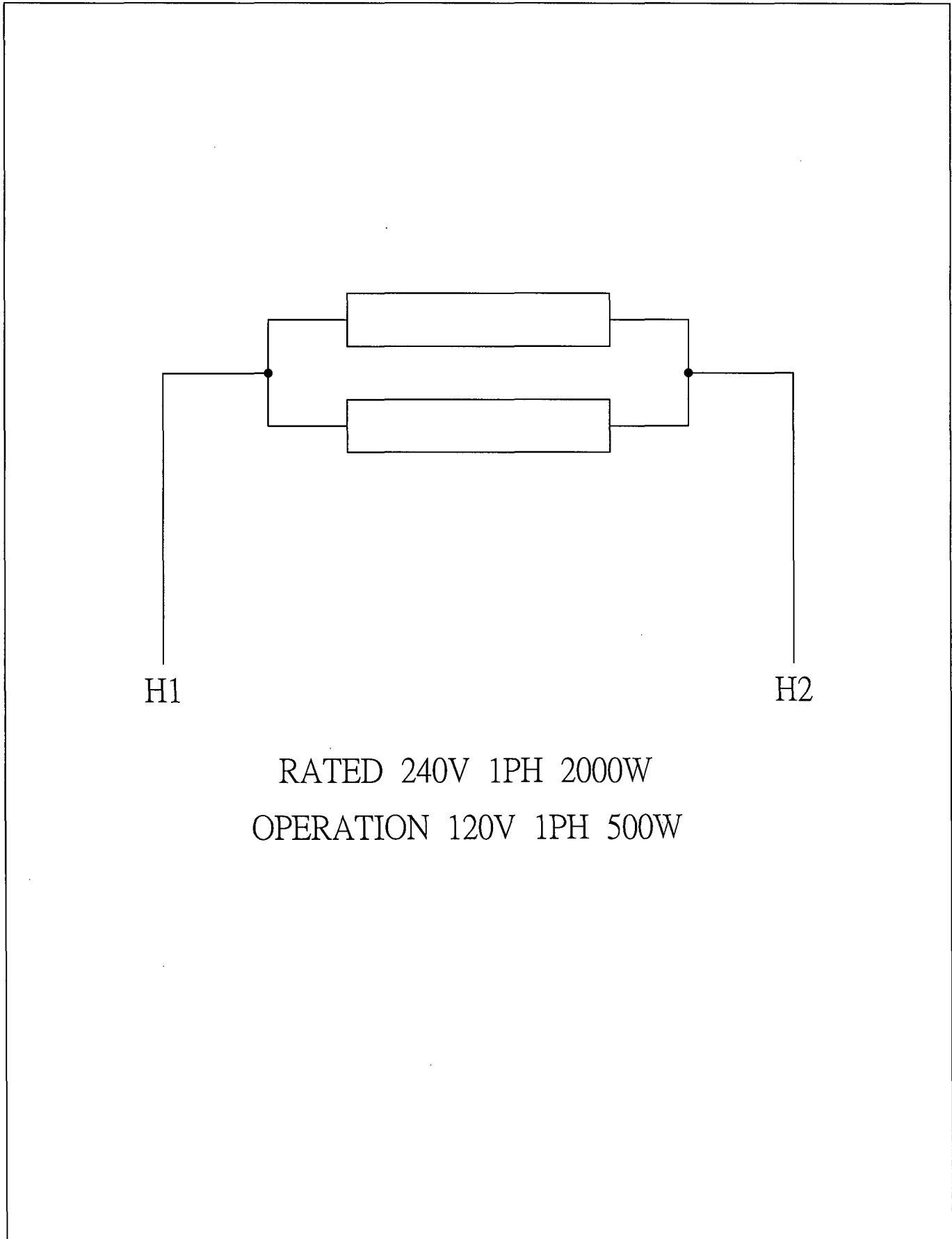
DWN.	S.HUANG	MAR · 03 · 2003	TECO Westinghouse	DWG NO.	REV: 00
CHKD.	T.HSIAO	MAR · 03 · 2003		3 A 0 6 1 H 4 6 7	
APPD.	T.HSIAO	MAR · 03 · 2003			

DATE	DEC.22.2009	6 LEADS SC&LA&CT	MODEL
		CONNECTION DIAGRAM	



DWN.	S.HUANG	MAR · 03 · 2003	TECO Westinghouse	DWG NO.	REV: 00
CHKD.	T.HSIAO	MAR · 03 · 2003		3 A 0 6 1 H 4 7 8	
APPD.	T.HSIAO	MAR · 03 · 2003			

DATE	DEC.22.2009	SCHEMATIC SPACE HEATER	MODEL

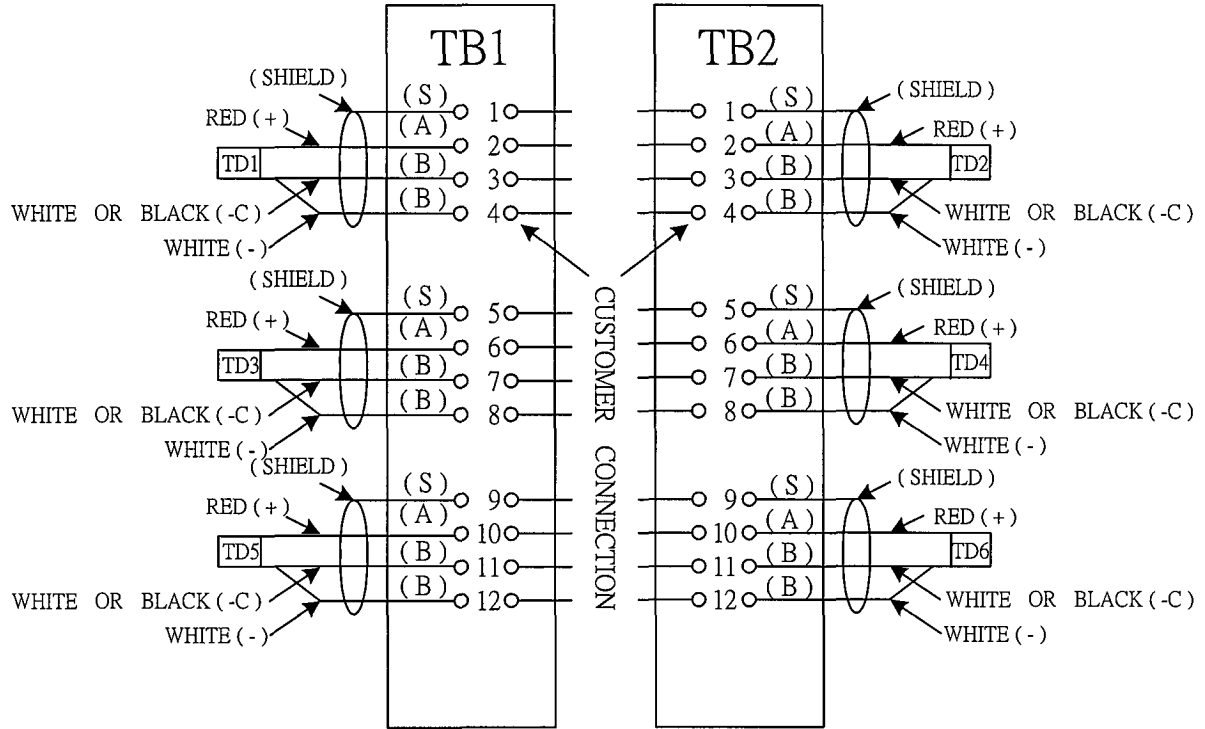


DWN.	S.HUANG	NOV · 10 · 2006	TECO  Westinghouse	DWG NO.	REV: 00
CHKD.	T.HSIAO	NOV · 10 · 2006		3 A 0 6 1 H 3 2 0	
APPD.	T.HSIAO	NOV · 10 · 2006			

DATE
DEC.22.2009

WIRING DIAGRAM

MODEL



DWN.	S.HUANG	MAR · 03 · 2003
CHKD.	T.HSIAO	MAR · 03 · 2003
APPD.	C.Y.HUANG	MAR · 03 · 2003

TECO  **Westinghouse**

DWG NO. REV: 00

3 A 0 6 1 H 5 1 2