



Form Number: 150.62-NM6 (LS01)

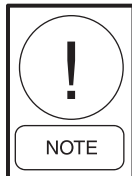
603

Supersedes: None

LITERATURE SUPPLEMENT

File with: 150.62-NM6 (103)

Subject: Added YCAL0134 Model, Updated Electrical Data, Physical Data, and Isolator Selection



For YCAL0134 model wiring diagrams, refer to 150.62-NM6. Diagrams for YCAL0014-YCAL0124 are also valid for YCAL0134.

SINGLE-POINT POWER SUPPLY CONNECTIONS – YCAL0014E_ - YCAL0034E_

(One Field Provided Power Supply to the chiller. Field connections to Factory Provided Power Terminal Block (standard), Non-Fused Disconnect Switch (optional) or Circuit Breaker (optional).)

TABLE 2 – SINGLE-POINT POWER SUPPLY

MODEL YCAL	VOLT	HZ	SINGLE POINT FIELD SUPPLIED WIRING									SYSTEM #1 COMPRESSOR & FAN							
			MCA ¹	MIN N/F DISC SW ²	D.E. FUSE		CKT. BKR. ⁵		INCOMING (LUGS) WIRE RANGE ⁶			COMPR. #1		COMPR. #2		COMPR. #3		FANS	
					MIN ³	MAX ⁴	MIN	MAX	TERMINAL BLOCK (std)	NF DISC. SWITCH (opt)	CIRCUIT BREAKER (opt)	RLA	LRA	RLA	LRA	RLA	LRA	QTY	FLA(EA)
0014	200	60	81	100	90	100	90	100	# 10 - # 1	# 14 - 1/0	# 14 - 1/0	28.3	189	28.3	189	—	—	2	8.2
	230	60	75	100	90	100	90	100	# 10 - # 1	# 14 - 1/0	# 14 - 1/0	26.2	189	26.2	189	—	—	2	7.8
	380	60	44	60	50	50	50	50	# 10 - # 1	# 14 - 1/0	# 14 - 2	15.1	112	15.1	112	—	—	2	4.8
	460	60	37	60	40	45	40	45	# 10 - # 1	# 14 - 1/0	# 14 - 2	12.5	99	12.5	99	—	—	2	4.0
	575	60	29	60	35	35	35	35	# 10 - # 1	# 14 - 1/0	# 14 - 2	10.0	74	10.0	74	—	—	2	3.1
0020	200	60	101	150	110	125	110	125	# 10 - # 1	# 14 - 1/0	# 2 - 4/0	37.4	278	37.4	278	—	—	2	8.2
	230	60	94	100	110	125	110	125	# 10 - # 1	# 14 - 1/0	# 2 - 4/0	34.6	278	34.6	278	—	—	2	7.8
	380	60	55	60	60	70	60	70	# 10 - # 1	# 14 - 1/0	# 14 - 2	19.9	151	19.9	151	—	—	2	4.8
	460	60	46	60	50	60	50	60	# 10 - # 1	# 14 - 1/0	# 14 - 2	16.5	127	16.5	127	—	—	2	4.0
	575	60	36	60	40	45	40	45	# 10 - # 1	# 14 - 1/0	# 14 - 2	13.2	100	13.2	100	—	—	2	3.1
0024	200	60	128	150	150	175	150	175	# 10 - 3/0	# 2 - 4/0	# 2 - 4/0	49.4	350	49.4	350	—	—	2	8.2
	230	60	119	150	150	150	150	150	# 10 - 3/0	# 2 - 4/0	# 2 - 4/0	45.8	350	45.8	350	—	—	2	7.8
	380	60	69	100	80	90	80	90	# 10 - # 1	# 14 - 1/0	# 14 - 1/0	26.4	195	26.4	195	—	—	2	4.8
	460	60	58	60	70	70	70	70	# 10 - # 1	# 14 - 1/0	# 14 - 1/0	21.8	158	21.8	158	—	—	2	4.0
	575	60	46	60	50	60	50	60	# 10 - # 1	# 14 - 1/0	# 14 - 2	17.4	125	17.4	125	—	—	2	3.1
0030	200	60	138	150	175	175	175	175	# 10 - 3/0	# 2 - 4/0	# 3 - 300	53.8	425	53.8	425	—	—	2	8.2
	230	60	128	150	150	175	150	175	# 10 - 3/0	# 2 - 4/0	# 3 - 300	49.8	425	49.8	425	—	—	2	7.8
	380	60	75	100	90	100	90	100	# 10 - # 1	# 14 - 1/0	# 14 - 1/0	28.7	239	28.7	239	—	—	2	4.8
	460	60	62	100	70	80	70	80	# 10 - # 1	# 14 - 1/0	# 14 - 1/0	23.7	187	23.7	187	—	—	2	4.0
	575	60	49	60	60	60	60	60	# 10 - # 1	# 14 - 1/0	# 14 - 2	19.0	148	19.0	148	—	—	2	3.1
0034	200	60	178	200	200	225	200	225	# 10 - 300	# 3 - 300	# 3 - 300	49.4	350	49.4	350	49.4	350	2	8.2
	230	60	165	200	200	200	200	200	# 10 - 300	# 3 - 300	# 3 - 300	45.8	350	45.8	350	45.8	350	2	7.8
	380	60	96	150	110	110	110	110	# 10 - # 1	# 14 - 1/0	# 2 - 4/0	26.4	195	26.4	195	26.4	195	2	4.8
	460	60	79	100	90	100	90	100	# 10 - # 1	# 14 - 1/0	# 14 - 1/0	21.8	158	21.8	158	21.8	158	2	4.0
	575	60	63	100	70	80	70	80	# 10 - # 1	# 14 - 1/0	# 14 - 1/0	17.4	125	17.4	125	17.4	125	2	3.1

ELECTRICAL DATA – DUAL POINT POWER SUPPLY CONNECTIONS – YCAL0040E_ - YCAL0080E_

(Two Field Provided Power Supply Circuits to the chiller. Field connections to Factory Provided Terminal Blocks per system)

TABLE 3 – DUAL POINT POWER SUPPLY CONNECTIONS

MODEL YCAL	VOLT	HZ	SYSTEM #1 FIELD SUPPLIED WIRING									SYSTEM #1 COMPRESSOR & FAN							
			MCA ¹	MIN N/F DISC SW ²	D.E. FUSE		CKT. BKR. ⁵		INCOMING (LUGS) WIRE RANGE ⁶			COMPR. #1		COMPR. #2		COMPR. #3		FANS	
					MIN ³	MAX ⁴	MIN	MAX	TERMINAL BLOCK (std)	NF DISC. SWITCH (opt)	CIRCUIT BREAKER (opt)	RLA	LRA	RLA	LRA	RLA	LRA	QTY	FLA(EA)
0040	200	60	101	150	110	125	110	125	# 10 - # 1	# 14 - 1/0	# 2 - 4/0	33.2	278	33.2	278	—	—	2	8.2
	230	60	94	100	110	125	110	125	# 10 - # 1	# 14 - 1/0	# 2 - 4/0	33.2	278	33.2	278	—	—	2	7.8
	380	60	55	60	60	70	60	70	# 10 - # 1	# 14 - 1/0	# 14 - 2	19.9	151	19.9	151	—	—	2	4.8
	460	60	46	60	50	60	50	60	# 10 - # 1	# 14 - 1/0	# 14 - 2	16.6	127	16.6	127	—	—	2	4.0
	575	60	36	60	40	45	40	45	# 10 - # 1	# 14 - 1/0	# 14 - 2	13.3	100	13.3	100	—	—	2	3.1
0042	200	60	128	150	150	175	150	175	# 10 - 3/0	# 2 - 4/0	# 2 - 4/0	40.0	350	40.0	350	—	—	2	8.2
	230	60	119	150	150	150	150	150	# 10 - 3/0	# 2 - 4/0	# 2 - 4/0	40.0	350	40.0	350	—	—	2	7.8
	380	60	69	100	80	90	80	90	# 10 - # 1	# 14 - 1/0	# 14 - 1/0	24.0	195	24.0	195	—	—	2	4.8
	460	60	58	60	70	70	70	70	# 10 - # 1	# 14 - 1/0	# 14 - 1/0	19.9	167	19.9	167	—	—	2	4.0
	575	60	46	60	50	60	50	60	# 10 - # 1	# 14 - 1/0	# 14 - 2	16.0	125	16.0	125	—	—	2	3.1
0044	200	60	128	150	150	175	150	175	# 10 - 3/0	# 2 - 4/0	# 2 - 4/0	40.0	350	40.0	350	—	—	2	8.2
	230	60	119	150	150	150	150	150	# 10 - 3/0	# 2 - 4/0	# 2 - 4/0	40.0	350	40.0	350	—	—	2	7.8
	380	60	69	100	80	90	80	90	# 10 - # 1	# 14 - 1/0	# 14 - 1/0	24.0	195	24.0	195	—	—	2	4.8
	460	60	58	60	70	70	70	70	# 10 - # 1	# 14 - 1/0	# 14 - 1/0	19.9	167	19.9	167	—	—	2	4.0
	575	60	46	60	50	60	50	60	# 10 - # 1	# 14 - 1/0	# 14 - 2	16.0	125	16.0	125	—	—	2	3.1
0050	200	60	138	150	175	175	175	175	# 10 - 3/0	# 2 - 4/0	# 3 - 300	47.8	425	47.8	425	—	—	2	8.2
	230	60	128	150	150	175	150	175	# 10 - 3/0	# 2 - 4/0	# 3 - 300	47.8	425	47.8	425	—	—	2	7.8
	380	60	75	100	90	100	90	100	# 10 - # 1	# 14 - 1/0	# 14 - 1/0	28.7	239	28.7	239	—	—	2	4.8
	460	60	62	100	70	80	70	80	# 10 - # 1	# 14 - 1/0	# 14 - 1/0	23.9	198	23.9	198	—	—	2	4.0
	575	60	49	60	60	60	60	60	# 10 - # 1	# 14 - 1/0	# 14 - 2	19.1	148	19.1	148	—	—	2	3.1
0060	200	60	138	150	175	175	175	175	# 10 - 3/0	# 2 - 4/0	# 3 - 300	47.8	425	47.8	425	—	—	2	8.2
	230	60	128	150	150	175	150	175	# 10 - 3/0	# 2 - 4/0	# 3 - 300	47.8	425	47.8	425	—	—	2	7.8
	380	60	75	100	90	100	90	100	# 10 - # 1	# 14 - 1/0	# 14 - 1/0	28.7	239	28.7	239	—	—	2	4.8
	460	60	62	100	70	80	70	80	# 10 - # 1	# 14 - 1/0	# 14 - 1/0	23.9	198	23.9	198	—	—	2	4.0
	575	60	49	60	60	60	60	60	# 10 - # 1	# 14 - 1/0	# 14 - 2	19.1	148	19.1	148	—	—	2	3.1
0064	200	60	178	200	200	225	200	225	# 10 - 300	# 3 - 300	# 3 - 300	40.0	350	40.0	350	40.0	350	2	8.2
	230	60	165	200	200	200	200	200	# 10 - 300	# 3 - 300	# 3 - 300	40.0	350	40.0	350	40.0	350	2	7.8
	380	60	96	150	110	110	110	110	# 10 - # 1	# 14 - 1/0	# 14 - 1/0	24.0	195	24.0	195	24.0	195	2	4.8
	460	60	79	100	90	100	90	100	# 10 - # 1	# 14 - 1/0	# 14 - 1/0	19.9	167	19.9	167	19.9	167	2	4.0
	575	60	63	100	70	80	70	80	# 10 - # 1	# 14 - 1/0	# 14 - 1/0	16.0	125	16.0	125	16.0	125	2	3.1
0070	200	60	178	200	200	225	200	225	# 10 - 300	# 3 - 300	# 3 - 300	40.0	350	40.0	350	40.0	350	2	8.2
	230	60	165	200	200	200	200	200	# 10 - 300	# 3 - 300	# 3 - 300	40.0	350	40.0	350	40.0	350	2	7.8
	380	60	96	150	110	110	110	110	# 10 - # 1	# 14 - 1/0	# 14 - 1/0	24.0	195	24.0	195	24.0	195	2	4.8
	460	60	79	100	90	100	90	100	# 10 - # 1	# 14 - 1/0	# 14 - 1/0	19.9	167	19.9	167	19.9	167	2	4.0
	575	60	63	100	70	80	70	80	# 10 - # 1	# 14 - 1/0	# 14 - 1/0	16.0	125	16.0	125	16.0	125	2	3.1
0074	200	60	192	250	225	225	225	225	# 10 - 300	# 3 - 300	# 3 - 300	47.8	425	47.8	425	47.8	425	2	8.2
	230	60	178	200	200	225	200	225	# 10 - 300	# 3 - 300	# 3 - 300	47.8	425	47.8	425	47.8	425	2	7.8
	380	60	103	150	125	125	125	125	# 10 - # 1	# 2 - 4/0	# 2 - 4/0	28.7	239	28.7	239	28.7	239	2	4.8
	460	60	86	100	100	100	100	100	# 10 - # 1	# 14 - 1/0	# 14 - 1/0	23.9	198	23.9	198	23.9	198	2	4.0
	575	60	68	100	80	80	80	80	# 10 - # 1	# 14 - 1/0	# 14 - 1/0	19.1	148	19.1	148	19.1	148	2	3.1
0080	200	60	192	250	225	225	225	225	# 10 - 300	# 3 - 300	# 3 - 300	47.8	425	47.8	425	47.8	425	2	8.2
	230	60	178	200	200	225	200	225	# 10 - 300	# 3 - 300	# 3 - 300	47.8	425	47.8	425	47.8	425	2	7.8
	380	60	103	150	125	125	125	125	# 10 - # 1	# 2 - 4/0	# 2 - 4/0	28.7	239	28.7	239	28.7	239	2	4.8
	460	60	86	100	100	100	100	100	# 10 - # 1	# 14 - 1/0	# 14 - 1/0	23.9	198	23.9	198	23.9	198	2	4.0
	575	60	68	100	80	80	80	80	# 10 - # 1	# 14 - 1/0	# 14 - 1/0	19.1	148	19.1	148	19.1	148	2	3.1

SYSTEM #2 FIELD SUPPLIED WIRING																
MCA ¹	MIN N/F DISC SW ²	D.E. FUSE		CKT. BKR. ⁵		INCOMING (LUGS) WIRE RANGE ⁶			SYSTEM #2 COMPRESSOR & FAN							
		MIN ³	MAX ⁴	MIN	MAX	TERMINAL BLOCK (std)	NF DISC. SWITCH (opt)	CIRCUIT BREAKER (opt)	COMPR. #1		COMPR. #2		COMPR. #3		FANS	
									RLA	LRA	RLA	LRA	RLA	LRA	QTY	FLA(EA)
101	150	110	125	110	125	# 10 - # 1	# 14 - 1/0	# 2 - 4/0	37.4	278	37.4	278	—	—	2	8.2
94	100	110	125	110	125	# 10 - # 1	# 14 - 1/0	# 2 - 4/0	34.6	278	34.6	278	—	—	2	7.8
55	60	60	70	60	70	# 10 - # 1	# 14 - 1/0	# 14 - 2	19.9	151	19.9	151	—	—	2	4.8
46	60	50	60	50	60	# 10 - # 1	# 14 - 1/0	# 14 - 2	16.5	127	16.5	127	—	—	2	4.0
36	60	40	45	40	45	# 10 - # 1	# 14 - 1/0	# 14 - 2	13.2	100	13.2	100	—	—	2	3.1
101	150	110	125	110	125	# 10 - # 1	# 14 - 1/0	# 2 - 4/0	37.4	278	37.4	278	—	—	2	8.2
94	100	110	125	110	125	# 10 - # 1	# 14 - 1/0	# 2 - 4/0	34.6	278	34.6	278	—	—	2	7.8
55	60	60	70	60	70	# 10 - # 1	# 14 - 1/0	# 14 - 1/0	19.9	151	19.9	151	—	—	2	4.8
46	60	50	60	50	60	# 10 - # 1	# 14 - 1/0	# 14 - 2	16.5	127	16.5	127	—	—	2	4.0
36	60	40	45	40	45	# 10 - # 1	# 14 - 1/0	# 14 - 2	13.2	100	13.2	100	—	—	2	3.1
128	150	150	175	150	175	# 10 - 3/0	# 2 - 4/0	# 2 - 4/0	49.4	350	49.4	350	—	—	2	8.2
119	150	150	150	150	150	# 10 - 3/0	# 2 - 4/0	# 2 - 4/0	45.8	350	45.8	350	—	—	2	7.8
69	100	80	90	80	90	# 10 - # 1	# 14 - 1/0	# 14 - 1/0	26.4	195	26.4	195	—	—	2	4.8
58	60	70	70	70	70	# 10 - # 1	# 14 - 1/0	# 14 - 1/0	21.8	158	21.8	158	—	—	2	4.0
46	60	50	60	50	60	# 10 - # 1	# 14 - 1/0	# 14 - 2	17.4	125	17.4	125	—	—	2	3.1
128	150	150	175	150	175	# 10 - 3/0	# 2 - 4/0	# 2 - 4/0	49.4	350	49.4	350	—	—	2	8.2
119	150	150	150	150	150	# 10 - 3/0	# 2 - 4/0	# 2 - 4/0	45.8	350	45.8	350	—	—	2	7.8
69	100	80	90	80	90	# 10 - # 1	# 14 - 1/0	# 14 - 1/0	26.4	195	26.4	195	—	—	2	4.8
58	60	70	70	70	70	# 10 - # 1	# 14 - 1/0	# 14 - 1/0	21.8	158	21.8	158	—	—	2	4.0
46	60	50	60	50	60	# 10 - # 1	# 14 - 1/0	# 14 - 2	17.4	125	17.4	125	—	—	2	3.1
138	150	175	175	175	175	# 10 - 3/0	# 2 - 4/0	# 3 - 300	53.8	425	53.8	425	—	—	2	8.2
128	150	150	175	150	175	# 10 - 3/0	# 2 - 4/0	# 3 - 300	49.8	425	49.8	425	—	—	2	7.8
75	100	90	100	90	100	# 10 - # 1	# 14 - 1/0	# 14 - 1/0	28.7	239	28.7	239	—	—	2	4.8
62	100	70	80	70	80	# 10 - # 1	# 14 - 1/0	# 14 - 1/0	23.7	187	23.7	187	—	—	2	4.0
49	60	60	60	60	60	# 10 - # 1	# 14 - 1/0	# 14 - 2	19.0	148	19.0	148	—	—	2	3.1
138	150	150	175	150	175	# 10 - 3/0	# 2 - 4/0	# 2 - 4/0	37.4	278	37.4	278	37.4	278	2	8.2
129	150	150	150	150	150	# 10 - 3/0	# 2 - 4/0	# 2 - 4/0	34.6	278	34.6	278	34.6	278	2	7.8
75	100	80	90	80	90	# 10 - # 1	# 14 - 1/0	# 14 - 1/0	19.9	151	19.9	151	19.9	151	2	4.8
62	100	70	70	70	70	# 10 - # 1	# 14 - 1/0	# 14 - 1/0	16.5	127	16.5	127	16.5	127	2	4.0
50	60	60	60	60	60	# 10 - # 1	# 14 - 1/0	# 14 - 1/0	13.2	100	13.2	100	13.2	100	2	3.1
178	200	200	225	200	225	# 10 - 300	# 3 - 300	# 3 - 300	49.4	350	49.4	350	49.4	350	2	8.2
165	200	200	200	200	200	# 10 - 300	# 3 - 300	# 3 - 300	45.8	350	45.8	350	45.8	350	2	7.8
96	150	110	110	110	110	# 10 - # 1	# 14 - 1/0	# 14 - 1/0	26.4	195	26.4	195	26.4	195	2	4.8
79	100	90	100	90	100	# 10 - # 1	# 14 - 1/0	# 14 - 1/0	21.8	158	21.8	158	21.8	158	2	4.0
63	100	70	80	70	80	# 10 - # 1	# 14 - 1/0	# 14 - 1/0	17.4	125	17.4	125	17.4	125	2	3.1
178	200	200	225	200	225	# 10 - 300	# 3 - 300	# 3 - 300	49.4	350	49.4	350	49.4	350	2	8.2
165	200	200	200	200	200	# 10 - 300	# 3 - 300	# 3 - 300	45.8	350	45.8	350	45.8	350	2	7.8
96	150	110	110	110	110	# 10 - # 1	# 14 - 1/0	# 2 - 4/0	26.4	195	26.4	195	26.4	195	2	4.8
79	100	90	100	90	100	# 10 - # 1	# 14 - 1/0	# 14 - 1/0	21.8	158	21.8	158	21.8	158	2	4.0
63	100	70	80	70	80	# 10 - # 1	# 14 - 1/0	# 14 - 1/0	17.4	125	17.4	125	17.4	125	2	3.1
192	250	225	225	225	225	# 10 - 300	# 3 - 300	# 3 - 300	53.8	425	53.8	425	53.8	425	2	8.2
178	200	200	225	200	225	# 10 - 300	# 3 - 300	# 3 - 300	49.8	425	49.8	425	49.8	425	2	7.8
103	150	125	125	125	125	# 10 - # 1	# 2 - 4/0	# 2 - 4/0	28.7	239	28.7	239	28.7	239	2	4.8
86	100	100	100	100	100	# 10 - # 1	# 14 - 1/0	# 14 - 1/0	23.7	187	23.7	187	23.7	187	2	4.0
68	100	80	80	80	80	# 10 - # 1	# 14 - 1/0	# 14 - 1/0	19.0	148	19.0	148	19.0	148	2	3.1

ELECTRICAL DATA – SINGLE POINT POWER SUPPLY CONNECTIONS – YCAL0040E_ - YCAL0080E_

(One Field Provided Power Supply Circuit to the chiller. Field connections to Factory Provided Terminal Block (optional), Non-Fused Disconnect Switch (optional) or Circuit Breaker (optional).)

TABLE 4 – SINGLE POINT POWER SUPPLY CONNECTIONS

MODEL YCAL	VOLT	HZ	SINGLE POINT FIELD SUPPLIED WIRING								
			MCA ¹	MIN N/F DISC SW ²	D.E. FUSE		CKT. BKR. ⁵		INCOMING (LUGS) WIRE RANGE ⁶		
					MIN ³	MAX ⁴	MIN	MAX	TERMINAL BLOCK (opt)	NF DISC. SWITCH (opt)	CIRCUIT BREAKER (opt)
0040	200	60	192	250	225	225	225	225	# 10 - 300	# 6 - 350	# 3 - 300
	230	60	179	200	200	200	200	200	# 10 - 300	# 6 - 350	# 3 - 300
	380	60	104	150	110	110	110	110	# 10 - # 1	# 2 - 4/0	# 2 - 4/0
	460	60	87	100	100	100	100	100	# 10 - # 1	# 14 - 1/0	# 14 - 1/0
	575	60	69	100	80	80	80	80	# 10 - # 1	# 14 - 1/0	# 14 - 1/0
0042	200	60	219	250	250	250	250	250	# 10 - 300	# 6 - 350	# 3 - 300
	230	60	204	250	225	225	225	225	# 10 - 300	# 6 - 350	# 3 - 300
	380	60	119	150	150	150	150	150	# 10 - 3/0	# 2 - 4/0	# 2 - 4/0
	460	60	98	150	110	110	110	110	# 10 - # 1	# 2 - 4/0	# 14 - 1/0
	575	60	78	100	90	90	90	90	# 10 - # 1	# 14 - 1/0	# 14 - 1/0
0044	200	60	243	400	300	300	300	300	# 10 - 300	250-500	# 6 - 350
	230	60	226	250	250	250	250	250	# 10 - 300	# 6 - 350	# 6 - 350
	380	60	132	150	150	250	150	250	# 10 - 3/0	# 2 - 4/0	# 2 - 4/0
	460	60	109	150	125	125	125	125	# 10 - # 1	# 2 - 4/0	# 2 - 4/0
	575	60	87	100	100	100	100	100	# 10 - # 1	# 14 - 1/0	# 14 - 1/0
0050	200	60	253	400	300	300	300	300	# 10 - 300	250-500	250-500
	230	60	235	400	250	250	250	250	# 10 - 300	250-500	# 6 - 350
	380	60	137	150	150	150	150	150	# 10 - 3/0	# 2 - 4/0	# 2 - 4/0
	460	60	113	150	125	125	125	125	# 10 - # 1	# 2 - 4/0	# 2 - 4/0
	575	60	90	100	100	100	100	100	# 10 - # 1	# 14 - 1/0	# 14 - 1/0
0060	200	60	262	400	300	300	300	300	# 4 - 500	250-500	250-500
	230	60	243	400	300	300	300	300	# 4 - 500	250-500	250-500
	380	60	142	200	150	150	150	150	# 10 - 3/0	# 6 - 350	# 2 - 4/0
	460	60	117	150	125	125	125	125	# 10 - 3/0	# 2 - 4/0	# 2 - 4/0
	575	60	94	150	100	110	100	110	# 10 - # 1	# 2 - 4/0	# 14 - 1/0
0064	200	60	306	400	350	350	350	350	# 4 - 500	250-500	250-500
	230	60	264	400	300	300	300	300	# 4 - 500	250-500	250-500
	380	60	165	200	175	175	175	175	# 10 - 3/0	# 6 - 350	# 2 - 4/0
	460	60	137	200	150	150	150	150	# 10 - 3/0	# 6 - 350	# 2 - 4/0
	575	60	109	150	125	125	125	125	# 10 - # 1	# 2 - 4/0	# 2 - 4/0
0070	200	60	342	400	400	400	400	400	(2) # 10 - 3/0	250-500	250-500
	230	60	318	400	350	350	350	350	# 4 - 500	250-500	250-500
	380	60	185	250	200	200	200	200	# 10 - 300	# 6 - 350	# 4 - 300
	460	60	153	200	175	175	175	175	# 10 - 3/0	# 6 - 350	# 4 - 300
	575	60	122	150	150	150	150	150	# 10 - 3/0	# 2 - 4/0	# 2 - 4/0
0074	200	60	356	400	400	400	400	400	(2) # 10 - 300	250-500	250-500
	230	60	331	400	350	350	350	350	# 4 - 500	250-500	250-500
	380	60	192	250	200	200	200	200	# 10 - 300	# 6 - 350	# 4 - 300
	460	60	159	200	175	175	175	175	# 10 - 3/0	# 6 - 350	# 4 - 300
	575	60	127	150	150	150	150	150	# 10 - 3/0	# 2 - 4/0	# 2 - 4/0
0080	200	60	369	600	400	400	400	400	(2) # 10 - 300	(3) 2/0 - 400	250-500
	230	60	343	400	400	400	400	400	(2) # 10 - 300	250-500	250-500
	380	60	199	250	225	225	225	225	# 10 - 300	# 6 - 350	# 4 - 300
	460	60	165	200	175	175	175	175	# 10 - 3/0	# 6 - 350	# 4 - 300
	575	60	131	150	150	150	150	150	# 10 - 3/0	# 2 - 4/0	# 2 - 4/0

SYSTEM #1 COMPRESSOR & FAN								SYSTEM #2 FIELD SUPPLIED WIRING							
COMPR. #1		COMPR. #2		COMPR. #3		FANS		COMPR. #1		COMPR. #2		COMPR. #3		FANS	
RLA	LRA	RLA	LRA	RLA	LRA	QTY	FLA(EA)	RLA	LRA	RLA	LRA	RLA	LRA	QTY	FLA(EA)
37.4	278	37.4	278	—	—	2	8.2	37.4	278	37.4	278	—	—	2	8.2
34.6	278	34.6	278	—	—	2	7.8	34.6	278	34.6	278	—	—	2	7.8
19.9	151	19.9	151	—	—	2	4.8	19.9	151	19.9	151	—	—	2	4.8
16.5	127	16.5	127	—	—	2	4.0	16.5	127	16.5	127	—	—	2	4.0
13.2	100	13.2	100	—	—	2	3.1	13.2	100	13.2	100	—	—	2	3.1
49.4	350	49.4	350	—	—	2	8.2	37.4	278	37.4	278	—	—	2	8.2
45.8	350	45.8	350	—	—	2	7.8	34.6	278	34.6	278	—	—	2	7.8
26.4	195	26.4	195	—	—	2	4.8	19.9	151	19.9	151	—	—	2	4.8
21.8	158	21.8	158	—	—	2	4.0	16.5	127	16.5	127	—	—	2	4.0
17.4	125	17.4	125	—	—	2	3.1	13.2	100	13.2	100	—	—	2	3.1
49.4	350	49.4	350	—	—	2	8.2	49.4	350	49.4	350	—	—	2	8.2
45.8	350	45.8	350	—	—	2	7.8	45.8	350	45.8	350	—	—	2	7.8
26.4	195	26.4	195	—	—	2	4.8	26.4	195	26.4	195	—	—	2	4.8
21.8	158	21.8	158	—	—	2	4.0	21.8	158	21.8	158	—	—	2	4.0
17.4	125	17.4	125	—	—	2	3.1	17.4	125	17.4	125	—	—	2	3.1
53.8	425	53.8	425	—	—	2	8.2	49.4	350	49.4	350	—	—	2	8.2
49.8	425	49.8	425	—	—	2	7.8	45.8	350	45.8	350	—	—	2	7.8
28.7	239	28.7	239	—	—	2	4.8	26.4	195	26.4	195	—	—	2	4.8
23.7	187	23.7	187	—	—	2	4.0	21.8	158	21.8	158	—	—	2	4.0
19.0	148	19.0	148	—	—	2	3.1	17.4	125	17.4	125	—	—	2	3.1
53.8	425	53.8	425	—	—	2	8.2	53.8	425	53.8	425	—	—	2	8.2
49.8	425	49.8	425	—	—	2	7.8	49.8	425	49.8	425	—	—	2	7.8
28.7	239	28.7	239	—	—	2	4.8	28.7	239	28.7	239	—	—	2	4.8
23.7	187	23.7	187	—	—	2	4.0	23.7	187	23.7	187	—	—	2	4.0
19.0	148	19.0	148	—	—	2	3.1	19.0	148	19.0	148	—	—	2	3.1
49.4	350	49.4	350	49.4	350	2	8.2	37.4	278	37.4	278	37.4	278	2	8.2
45.8	350	45.8	350	45.8	350	2	7.8	34.6	278	34.6	278	34.6	278	2	7.8
26.4	195	26.4	195	26.4	195	2	4.8	19.9	151	19.9	151	19.9	151	2	4.8
21.8	158	21.8	158	21.8	158	2	4.0	16.5	127	16.5	127	16.5	127	2	4.0
17.4	125	17.4	125	17.4	125	2	3.1	13.2	100	13.2	100	13.2	100	2	3.1
49.4	350	49.4	350	49.4	350	2	8.2	49.4	350	49.4	350	49.4	350	2	8.2
45.8	350	45.8	350	45.8	350	2	7.8	45.8	350	45.8	350	45.8	350	2	7.8
26.4	195	26.4	195	26.4	195	2	4.8	26.4	195	26.4	195	26.4	195	2	4.8
21.8	158	21.8	158	21.8	158	2	4.0	21.8	158	21.8	158	21.8	158	2	4.0
17.4	125	17.4	125	17.4	125	2	3.1	17.4	125	17.4	125	17.4	125	2	3.1
53.8	425	53.8	425	53.8	425	2	8.2	49.4	350	49.4	350	49.4	350	2	8.2
49.8	425	49.8	425	49.8	425	2	7.8	45.8	350	45.8	350	45.8	350	2	7.8
28.7	239	28.7	239	28.7	239	2	4.8	26.4	195	26.4	195	26.4	195	2	4.8
23.7	187	23.7	187	23.7	187	2	4.0	21.8	158	21.8	158	21.8	158	2	4.0
19.0	148	19.0	148	19.0	148	2	3.1	17.4	125	17.4	125	17.4	125	2	3.1
53.8	425	53.8	425	53.8	425	2	8.2	53.8	425	53.8	425	53.8	425	2	8.2
49.8	425	49.8	425	49.8	425	2	7.8	49.8	425	49.8	425	49.8	425	2	7.8
28.7	239	28.7	239	28.7	239	2	4.8	28.7	239	28.7	239	28.7	239	2	4.8
23.7	187	23.7	187	23.7	187	2	4.0	23.7	187	23.7	187	23.7	187	2	4.0
19.0	148	19.0	148	19.0	148	2	3.1	19.0	148	19.0	148	19.0	148	2	3.1

ELECTRICAL DATA – MULTIPLE POINT POWER SUPPLY CONNECTIONS – YCAL0090E_ - YCAL0134E_

Two Field Provided Power Supply Circuits to the chiller. Field connections to Factory Provided Terminal Blocks (standard), Non-Fused Disconnect Switches (optional), or Individual System Circuit Breakers (optional) per electrical system

TABLE 5 – MULTIPLE POINT POWER SUPPLY CONNECTIONS

MODEL YCAL	VOLT	HZ	SYSTEM #1 FIELD SUPPLIED WIRING								
			MCA ¹	MIN N/F DISC SW ²	D.E. FUSE		CKT. BKR. ⁵		INCOMING (LUGS) WIRE RANGE ⁶		
					MIN ³	MAX ⁴	MIN	MAX	TERMINAL BLOCK (std)	NF DISC. SWITCHES (opt)	CIR BREAKERS (opt)
0090	200	60	221	250	250	300	250	300	# 10 - 300	(1) # 6 - 350	(1) # 6 - 350
	230	60	206	250	250	250	250	250	# 10 - 300	(1) # 4 - 300	(1) # 6 - 350
	380	60	120	150	150	150	150	150	# 10 - 3/0	(1) # 6 - 350	# 6 - 350
	460	60	99	150	110	125	110	125	# 12 - # 1	(1) # 6 - 350	# 3 - 3/0
	575	60	79	100	90	100	90	100	# 12 - # 1	(1) # 6 - 350	# 3 - 3/0
0094	200	60	221	250	250	300	250	300	# 10 - 300	(1) # 6 - 350	(1) # 6 - 350
	230	60	206	250	250	250	250	250	# 10 - 300	(1) # 4 - 300	(1) # 6 - 350
	380	60	120	150	150	150	150	150	# 10 - 3/0	(1) # 6 - 350	# 6 - 350
	460	60	99	150	110	125	110	125	# 12 - # 1	(1) # 6 - 350	# 3 - 3/0
	575	60	79	100	90	100	90	100	# 12 - # 1	(1) # 6 - 350	# 3 - 3/0
0104	200	60	251	400	300	300	300	300	# 4 - 500	250 - 500	250 - 500
	230	60	233	250	250	250	250	250	# 4 - 500	250 - 500	250 - 500
	380	60	135	150	150	150	150	150	# 10 - 3/0	(1) # 6 - 350	# 6 - 350
	460	60	112	150	125	125	125	125	# 10 - 3/0	(1) # 6 - 350	# 3 - 3/0
	575	60	89	100	100	110	100	110	# 12 - # 1	(1) # 6 - 350	# 3 - 3/0
0114	200	60	251	400	300	300	300	300	# 4 - 500	250 - 500	250 - 500
	230	60	233	250	250	250	250	250	# 4 - 500	250 - 500	250 - 500
	380	60	135	150	150	150	150	150	# 14 - 2/0	(1) # 6 - 350	# 6 - 350
	460	60	112	150	125	125	125	125	# 14 - 2/0	(1) # 6 - 350	# 3 - 3/0
	575	60	89	100	100	110	100	110	# 14 - 2/0	(1) # 6 - 350	# 3 - 3/0
0124	200	60	317	400	350	400	350	400	# 4 - 500	250 - 500	250 - 500
	230	60	294	400	350	350	350	350	# 4 - 500	250 - 500	250 - 500
	380	60	171	200	200	200	200	200	# 10 - 3/0	(1) # 6 - 350	# 6 - 350
	460	60	141	200	175	175	175	175	# 10 - 3/0	(1) # 6 - 350	# 6 - 350
	575	60	113	150	125	125	125	125	# 12 - # 1	(1) # 6 - 350	# 3 - 3/0
0134	200	60	317	400	350	400	350	400	# 4 - 500	250 - 500	250 - 500
	230	60	294	400	350	350	350	350	# 4 - 500	250 - 500	250 - 500
	380	60	171	200	200	200	200	200	# 10 - 3/0	# 6 - 350	# 6 - 350
	460	60	141	200	175	175	175	175	# 10 - 3/0	# 6 - 350	# 6 - 350
	575	60	113	150	125	125	125	125	# 12 - # 1	# 6 - 350	# 3 - 3/0

MODEL YCAL	VOLT	HZ	SYSTEM #2 FIELD SUPPLIED WIRING								
			MCA ¹	MIN N/F DISC SW ²	D.E. FUSE		CKT. BKR. ⁵		INCOMING (LUGS) WIRE RANGE ⁶		
					MIN ³	MAX ⁴	MIN	MAX	TERMINAL BLOCK (std)	NF DISC. SWITCHES (opt)	CIR BREAKERS (opt)
0090	200	60	181	200	225	250	225	250	# 10 - 300	(1) # 4 - 300	(1) # 4 - 300
	230	60	168	200	200	225	200	225	# 10 - 300	(1) # 4 - 300	(1) # 4 - 300
	380	60	98	150	125	125	125	125	# 12 - # 1	(1) # 6 - 350	# 3 - 3/0
	460	60	81	100	90	110	100	110	# 12 - # 1	(1) # 6 - 350	# 3 - 3/0
	575	60	65	100	80	90	80	90	# 12 - # 1	(1) # 6 - 350	# 3 - 3/0
0094	200	60	221	250	250	300	250	300	# 10 - 300	(1) # 6 - 350	# 6 - 350
	230	60	206	250	250	250	250	250	# 10 - 300	(1) # 4 - 300	# 6 - 350
	380	60	120	150	150	150	150	150	# 10 - 3/0	(1) # 6 - 350	# 6 - 350
	460	60	99	150	110	125	110	125	# 12 - # 1	(1) # 6 - 350	# 3 - 3/0
	575	60	79	100	90	100	90	100	# 12 - # 1	(1) # 6 - 350	# 3 - 3/0
0104	200	60	221	250	250	300	250	300	# 10 - 300	(1) # 6 - 350	# 6 - 350
	230	60	206	250	250	250	250	250	# 10 - 300	(1) # 4 - 300	# 6 - 350
	380	60	120	150	150	150	150	150	# 10 - 3/0	(1) # 6 - 350	# 6 - 350
	460	60	99	150	110	125	110	125	# 12 - # 1	(1) # 6 - 350	# 3 - 3/0
	575	60	79	100	90	100	90	100	# 12 - # 1	(1) # 6 - 350	# 3 - 3/0
0114	200	60	251	400	300	300	300	300	# 4 - 500	250 - 500	250 - 500
	230	60	233	250	250	250	250	250	# 4 - 500	250 - 500	250 - 500
	380	60	135	150	150	150	150	150	# 10 - 3/0	(1) # 6 - 350	# 6 - 350
	460	60	112	150	125	125	125	125	# 10 - 3/0	(1) # 6 - 350	# 3 - 3/0
	575	60	89	100	100	110	100	110	# 12 - # 1	(1) # 6 - 350	# 3 - 3/0
0124	200	60	259	400	300	300	300	300	# 4 - 500	250 - 500	250 - 500
	230	60	241	400	300	300	300	300	# 4 - 500	250 - 500	250 - 500
	380	60	140	150	150	175	150	175	# 10 - 3/0	(1) # 6 - 350	# 6 - 350
	460	60	116	150	125	125	125	125	# 10 - 3/0	(1) # 6 - 350	# 3 - 3/0
	575	60	92	100	100	110	100	110	# 12 - # 1	(1) # 6 - 350	# 3 - 3/0
0134	200	60	317	400	350	400	350	400	# 4 - 500	250 - 500	250 - 500
	230	60	294	400	350	350	350	350	# 4 - 500	250 - 500	250 - 500
	380	60	171	200	200	200	200	200	# 10 - 3/0	# 6 - 350	# 6 - 350
	460	60	141	200	175	175	175	175	# 10 - 3/0	# 6 - 350	# 3 - 3/0
	575	60	113	150	125	125	125	125	# 12 - # 1	# 6 - 350	# 3 - 3/0

SYSTEM #1 COMPRESSOR & FAN

COMPR. #1		COMPR. #2		COMPR. #3		FANS	
RLA	LRA	RLA	LRA	RLA	LRA	QTY	FLA(EA)
87.2	500	87.2	500	—	—	3	8.2
80.8	500	80.8	500	—	—	3	7.8
46.6	305	46.6	305	—	—	3	4.8
38.5	250	38.5	250	—	—	3	4.0
30.8	198	30.8	198	—	—	3	3.1
87.2	500	87.2	500	—	—	3	8.2
80.8	500	80.8	500	—	—	3	7.8
46.6	305	46.6	305	—	—	3	4.8
38.5	250	38.5	250	—	—	3	4.0
30.8	198	30.8	198	—	—	3	3.1
69.4	505	69.4	505	69.4	505	4	8.2
64.3	505	64.3	505	64.3	505	4	7.8
37.0	280	37.0	280	37.0	280	4	4.8
30.6	225	30.6	225	30.6	225	4	4.0
24.5	180	24.5	180	24.5	180	4	3.1
69.4	505	69.4	505	69.4	505	4	8.2
64.3	505	64.3	505	64.3	505	4	7.8
37.0	280	37.0	280	37.0	280	4	4.8
30.6	225	30.6	225	30.6	225	4	4.0
24.5	180	24.5	180	24.5	180	4	3.1
87.2	500	87.2	500	87.2	500	4	8.2
80.8	500	80.8	500	80.8	500	4	7.8
46.6	305	46.6	305	46.6	305	4	4.8
38.5	250	38.5	250	38.5	250	4	4.0
30.8	198	30.8	198	30.8	198	4	3.1
87.2	500	87.2	500	87.2	500	4	8.2
80.8	500	80.8	500	80.8	500	4	7.8
46.6	305	46.6	305	46.6	305	4	4.8
38.5	250	38.5	250	38.5	250	4	4.0
30.8	198	30.8	198	30.8	198	4	3.1

SYSTEM #2 COMPRESSOR & FAN

COMPR. #1		COMPR. #2		COMPR. #3		FANS	
RLA	LRA	RLA	LRA	RLA	LRA	QTY	FLA(EA)
69.4	505	69.4	505	—	—	3	8.2
64.3	505	64.3	505	—	—	3	7.8
37.0	280	37.0	280	—	—	3	4.8
30.6	225	30.6	225	—	—	3	4.0
24.5	180	24.5	180	—	—	3	3.1
87.2	500	87.2	500	—	—	3	8.2
80.8	500	80.8	500	—	—	3	7.8
46.6	305	46.6	305	—	—	3	4.8
38.5	250	38.5	250	—	—	3	4.0
30.8	198	30.8	198	—	—	3	3.1
87.2	500	87.2	500	—	—	4	8.2
80.8	500	80.8	500	—	—	4	7.8
46.6	305	46.6	305	—	—	4	4.8
38.5	250	38.5	250	—	—	4	4.0
30.8	198	30.8	198	—	—	4	3.1
69.4	505	69.4	505	69.4	505	4	8.2
64.3	505	64.3	505	64.3	505	4	7.8
37.0	280	37.0	280	37.0	280	4	4.8
30.6	225	30.6	225	30.6	225	4	4.0
24.5	180	24.5	180	24.5	180	4	3.1
69.4	505	69.4	505	69.4	505	4	8.2
64.3	505	64.3	505	64.3	505	4	7.8
37.0	280	37.0	280	37.0	280	4	4.8
30.6	225	30.6	225	30.6	225	4	4.0
24.5	180	24.5	180	24.5	180	4	3.1
87.2	500	87.2	500	87.2	500	4	8.2
80.8	500	80.8	500	80.8	500	4	7.8
46.6	305	46.6	305	46.6	305	4	4.8
38.5	250	38.5	250	38.5	250	4	4.0
30.8	198	30.8	198	30.8	198	4	3.1

ELECTRICAL DATA – SINGLE POINT POWER SUPPLY CONNECTIONS WITH INDIVIDUAL SYSTEM CIRCUIT BREAKERS – YCAL0090E_ - YCAL0134E_

One Field Provided Power Supply Circuit to the chiller. Field connections to Factory Provided Terminal Block (optional) or Non-Fused Disconnect Switch (optional). Includes Individual Branch Circuit Protection (Breakers) per electrical system

**TABLE 6 – SINGLE POINT POWER SUPPLY CONNECTIONS WITH INDIVIDUAL SYSTEM
CIRCUIT BREAKERS**

MODEL YCAL	VOLT	HZ	SINGLE POINT FIELD SUPPLIED WIRING							
			MCA ¹	MIN N/F DISC SW ²	D.E. FUSE		CKT. BKR. ⁵		INCOMING (LUGS) WIRE RANGE ⁶	
					MIN ³	MAX ⁴	MIN	MAX	TERMINAL BLOCK (opt)	NF DISC. SWITCH (opt)
0090	200	60	385	600	450	450	450	450	(2) # 6 - 500	(3) 2/0 - 400
	230	60	358	400	400	400	400	400	(2) # 6 - 500	(3) 2/0 - 400
	380	60	208	250	225	250	225	250	# 10 - 300	(1) # 6 - 350
	460	60	172	200	200	200	200	200	# 10 - 3/0	(1) # 6 - 350
	575	60	137	150	150	150	150	150	# 10 - 3/0	(1) # 6 - 350
0094	200	60	420	600	450	500	450	500	(2) # 6 - 500	(2) 250 - 500
	230	60	391	600	450	450	450	450	(2) # 6 - 500	(2) 250 - 500
	380	60	227	250	250	250	250	250	# 10 - 300	(1 or 2) 3/0 - 500
	460	60	188	250	200	225	200	225	# 10 - 300	(1) # 6 - 350
	575	60	150	200	175	175	175	175	# 10 - 3/0	(1) # 6 - 350
0104	200	60	454	600	500	500	500	500	(2) # 6 - 500	(2) 250 - 500
	230	60	422	600	450	450	450	450	(2) # 6 - 500	(2) 250 - 500
	380	60	245	400	300	300	300	300	# 4 - 500	(1 or 2) 3/0 - 500
	460	60	203	250	225	225	225	225	# 10 - 300	(1) # 6 - 350
	575	60	162	200	175	175	175	175	# 10 - 3/0	(1) # 6 - 350
0114	200	60	483	600	600	600	600	600	(2) # 6 - 500	(2) 250 - 500
	230	60	449	600	500	500	500	500	(2) # 6 - 500	(2) 250 - 500
	380	60	261	400	300	300	300	300	# 4 - 500	(1 or 2) 3/0 - 500
	460	60	216	250	225	225	225	225	# 10 - 300	(1 or 2) 3/0 - 500
	575	60	172	200	200	200	200	200	# 10 - 300	(1) # 6 - 350
0124	200	60	553	800	600	600	600	600	(2) # 6 - 500	(2) 250 - 500
	230	60	514	600	600	600	600	600	(2) # 6 - 500	(2) 250 - 500
	380	60	299	400	350	350	350	350	# 4 - 500	(1 or 2) 3/0 - 500
	460	60	247	400	300	300	300	300	# 10 - 300	(1 or 2) 3/0 - 500
	575	60	197	250	225	225	225	225	# 10 - 300	(1) # 6 - 350
0134	200	60	611	800	700	700	700	700	(2) # 6 - 500	(2) 250 - 500
	230	60	568	800	600	600	600	600	(2) # 6 - 500	(2) 250 - 500
	380	60	330	400	350	350	350	350	# 4 - 500	(1 or 2) 3/0 - 500
	460	60	271	400	300	300	300	300	# 10 - 300	(1 or 2) 3/0 - 500
	575	60	218	250	225	225	225	225	# 10 - 300	(1) 6AWG - 3s50

SYSTEM #1 COMPRESSOR & FAN								SYSTEM #2 FIELD SUPPLIED WIRING							
COMPR. #1		COMPR. #2		COMPR. #3		FANS		COMPR. #1		COMPR. #2		COMPR. #3		FANS	
RLA	LRA	RLA	LRA	RLA	LRA	QTY	FLA(EA)	RLA	LRA	RLA	LRA	RLA	LRA	QTY	FLA(EA)
87.2	500	87.2	500	—	—	3	8.2	69.4	505	69.4	505	—	—	3	8.2
80.8	500	80.8	500	—	—	3	7.8	64.3	505	64.3	505	—	—	3	7.8
46.6	305	46.6	305	—	—	3	4.8	37.0	280	37.0	280	—	—	3	4.8
38.5	250	38.5	250	—	—	3	4.0	30.6	225	30.6	225	—	—	3	4.0
30.8	198	30.8	198	—	—	3	3.1	24.5	180	24.5	180	—	—	3	3.1
87.2	500	87.2	500	—	—	3	8.2	87.2	500	87.2	500	—	—	3	8.2
80.8	500	80.8	500	—	—	3	7.8	80.8	500	80.8	500	—	—	3	7.8
46.6	305	46.6	305	—	—	3	4.8	46.6	305	46.6	305	—	—	3	4.8
38.5	250	38.5	250	—	—	3	4.0	38.5	250	38.5	250	—	—	3	4.0
30.8	198	30.8	198	—	—	3	3.1	30.8	198	30.8	198	—	—	3	3.1
69.4	505	69.4	505	69.4	505	4	8.2	87.2	500	87.2	500	—	—	4	8.2
64.3	505	64.3	505	64.3	505	4	7.8	80.8	500	80.8	500	—	—	4	7.8
37.0	280	37.0	280	37.0	280	4	4.8	46.6	305	46.6	305	—	—	4	4.8
30.6	225	30.6	225	30.6	225	4	4.0	38.5	250	38.5	250	—	—	4	4.0
24.5	180	24.5	180	24.5	180	4	3.1	30.8	198	30.8	198	—	—	4	3.1
69.4	505	69.4	505	69.4	505	4	8.2	69.4	505	69.4	505	69.4	505	4	8.2
64.3	505	64.3	505	64.3	505	4	7.8	64.3	505	64.3	505	64.3	505	4	7.8
37.0	280	37.0	280	37.0	280	4	4.8	37.0	280	37.0	280	37.0	280	4	4.8
30.6	225	30.6	225	30.6	225	4	4.0	30.6	225	30.6	225	30.6	225	4	4.0
24.5	180	24.5	180	24.5	180	4	3.1	24.5	180	24.5	180	24.5	180	4	3.1
87.2	500	87.2	500	87.2	500	4	8.2	69.4	505	69.4	505	69.4	505	4	8.2
80.8	500	80.8	500	80.8	500	4	7.8	64.3	505	64.3	505	64.3	505	4	7.8
46.6	305	46.6	305	46.6	305	4	4.8	37.0	280	37.0	280	37.0	280	4	4.8
38.5	250	38.5	250	38.5	250	4	4.0	30.6	225	30.6	225	30.6	225	4	4.0
30.8	198	30.8	198	30.8	198	4	3.1	24.5	180	24.5	180	24.5	180	4	3.1
87.2	500	87.2	500	87.2	500	4	8.2	87.2	500	87.2	500	87.2	500	4	8.2
80.8	500	80.8	500	80.8	500	4	7.8	80.8	500	80.8	500	80.8	500	4	7.8
46.6	305	46.6	305	46.6	305	4	4.8	46.6	305	46.6	305	46.6	305	4	4.8
38.5	250	38.5	250	38.5	250	4	4.0	38.5	250	38.5	250	38.5	250	4	4.0
30.8	198	30.8	198	30.8	198	4	3.1	30.8	198	30.8	198	30.8	198	4	3.1

PHYSICAL DATA (ENGLISH)

YCAL0014E_ - YCAL0134E_

TABLE 15 – PHYSICAL DATA (ENGLISH)

	Model Number YCAL							
	0014	0020	0024	0030	0034	0040	0042	0044
General Unit Data								
Nominal Tons, R-22	13.2	18.0	22.4	28.3	34.0	38.7	42.9	47.1
Nominal Tons, R-407C	12.7	17.4	21.7	26.7	31.7	36.3	40.2	44.1
Number of Refrigerant Circuits	1	1	1	1	1	2	2	2
Refrigerant Charge								
R-22, ckt1 / ckt2, lbs	32	38	58	65	69	45/45	54/45	54/54
R-407C, ckt1 / ckt2, lbs	32	38	58	65	69	45/45	54/45	52/52
Oil Charge, ckt1 / ckt2, gallons	2.2	2.2	2.2	2.2	3.3	2.2/2.2	2.2/2.2	2.2/2.2
Shipping Weight								
Aluminum Fin Coils, lbs	2472	2488	2857	2933	3279	4689	4752	4822
Copper Fin Coils, lbs	2622	2638	3007	3083	3429	4989	5052	5122
Operating Weight								
Aluminum Fin Coils, lbs	2548	2564	2940	3036	3381	4931	4994	5064
Copper Fin Coils, lbs	2762	2778	3275	3371	3717	5300	5363	5433
Compressors, scroll type								
Compressors per circuit	2	2	2	2	3	2	2	2
Compressors per unit	2	2	2	2	3	4	4	4
Nominal Tons per compressor	7.5	10	13	15	13	10/10	13/10	13/13
Condenser								
Total Face Area ft ²	47.2	47.2	66.1	66.1	66.1	128.0	128.0	128.0
Number of Rows	2	2	2	3	3	2	2	2
Fins per Inch	13	13	13	13	13	13	13	13
Condenser Fans								
Number of Fans total	2	2	2	2	2	4	4	4
Fan hp/kw	2 / 1.4	2 / 1.4	2 / 1.4	2 / 1.4	2 / 1.4	2 / 1.4	2 / 1.4	2 / 1.4
Fan RPM	1140	1140	1140	1140	1140	1140	1140	1140
Number of Blades	3	3	3	3	3	3	3	3
Total Chiller CFM	16257	16257	23500	23500	23500	47360	47360	47360
Evaporator, Direct Expansion								
Diameter x Length	8"x6'	8"x6'	8"x6.5'	8"x7'	8"x7'	10"x8'	10"x8'	10"x8'
Water Volume, gallons	9.2	9.2	10.0	12.3	12.3	29.1	29.1	29.1
Maximum Water Side Pressure, PSIG	150	150	150	150	150	150	150	150
Maximum Refrigerant Side Pressure, PSIG	350	350	350	350	350	350	350	350
Minimum Chiller Water Flow Rate, gpm	25	25	30	35	60	60	60	60
Maximum Chiller Water Flow Rate, gpm	60	60	70	170	170	300	300	300
Water Connections, inches	3	3	3	4	4	6	6	6

PHYSICAL DATA (ENGLISH)

YCAL0014E_ - YCAL0134E_

Model Number YCAL											
0050	0060	0064	0070	0074	0080	0090	0094	0104	0114	0124	0134
51.1	56.2	63.1	70.2	76.0	82.2	83.2	89.9	99.6	111.1	121.0	130.3
48.1	53.3	58.9	65.7	71.6	78.0	79.6	85.8	94.9	106.5	115.1	124.3
2	2	2	2	2	2	2	2	2	2	2	2
60/54	72/72	75/62	75/75	92/83	100/100	94/77	94/94	112/94	112/112	112/112	112/112
60/54	57/57	67/57	67/67	88/67	88/88	90/74	90/90	108/90	108/108	108/108	108/108
2.2/2.2	2.2/2.2	3.3/3.3	3.3/3.3	3.3/3.3	3.3/3.3	4.2/4.2	4.2/4.2	6.3/4.2	6.3/6.3	6.3/6.3	6.3/6.3
4906	4994	5866	6045	6217	6448	6541	6619	7434	9001	9289	9677
5206	5294	6166	6425	6597	6828	7369	7448	8378	10261	10549	10937
5148	5236	6208	6386	6558	6779	6981	7059	7923	9491	9779	10167
5517	5605	6651	6829	7001	7222	7809	7888	8867	10751	11039	11427
2	2	3	3	3	3	2	2	3/2	3	3	3
4	4	6	6	6	6	4	4	5	6	6	6
15/13	15/15	13/10	13/13	15/13	15/15	25/20	25/25	20/25	20/20	25/20	25/25
128.0	128.0	149.3	149.3	149.3	149.3	168.0	168.0	192.0	222.0	222.0	222.0
2	3	2	3	3	3	3	3	3	3	3	3
13	13	13	13	13	13	13	13	13	13	13	13
4	4	4	4	4	4	6	6	6	8	8	8
2 / 1.4	2 / 1.4	2 / 1.7	2 / 1.7	2 / 1.7	2 / 1.7	2/1.8	2/1.8	2/1.8	2/1.8	2/1.8	2/1.8
1140	1140	1140	1140	1140	1140	1140	1140	1140	1140	1140	1140
3	3	3	3	3	3	3	3	3	3	3	3
47360	46080	55253	55253	54550	53760	79800	79800	85800	106400	106400	106400
10"x8'	10"x8'	12"x8'	12"x8'	12"x8'	12"x8'	14"x8'	14"x8'	15"x8'	15"x8'	15"x8'	15"x8'
29.1	29.1	41.2	41.2	41.2	39.9	53.0	53.0	58.9	58.9	58.9	58.9
150	150	150	150	150	150	150	150	150	150	150	150
350	350	350	350	350	350	350	350	350	350	350	350
60	60	100	100	100	100	125	138	150	165	180	180
300	300	350	350	350	385	525	525	625	625	625	625
6	6	6	6	6	6	8	8	8	8	8	8

PHYSICAL DATA (METRIC)

YCAL0014E_ - YCAL0134E_

	Model Number YCAL							
	0014	0020	0024	0030	0034	0040	0042	0044
General Unit Data								
Nominal kW, R-22	46.4	63.3	78.8	99.5	119.6	136.1	150.9	165.7
Nominal kW, R-407C	44.7	61.2	76.3	93.9	111.5	127.7	141.4	155.1
Number of Refrigerant Circuits	1	1	1	1	1	2	2	2
Refrigerant Charge								
R-22, ckt1 / ckt2, kg	14.5	17.3	24.4	29.5	31.4	20.5/20.5	24.5/20.5	24.5/24.5
R-407C, ckt1 / ckt2, kg	14.5	17.3	24.4	29.5	31.4	20.5/20.5	24.5/20.5	23.5/23.5
Oil Charge, ckt1 / ckt2, liters	8.3	8.3	8.3	8.3	12.5	8.3/8.3	8.3/8.3	8.3/8.3
Shipping Weight								
Aluminum Fin Coils, kg	1121	1129	1296	1330	1487	2127	2155	2187
Copper Fin Coils, kg	1189	1197	1364	1398	1555	2263	2292	2323
Operating Weight								
Aluminum Fin Coils, kg	1156	1163	1334	1377	1534	2237	2265	2297
Copper Fin Coils, kg	1253	1260	1486	1529	1686	2404	2433	2464
Compressors, scroll type								
Compressors per circuit	2	2	2	2	3	2	2	2
Compressors per unit	2	2	2	2	3	4	4	4
Nominal kWo per compressor	26	35	46	53	46	35/35	46/35	46/46
Condenser								
Total Face Area meters ²	4	4	6	6	6	12	12	12
Number of Rows	2	2	2	3	3	2	2	2
Fins per m	512	512	512	512	512	512	512	512
Condenser Fans								
Number of Fans total	2	2	2	2	2	4	4	4
Fan hp/kw	2 / 1.4	2 / 1.4	2 / 1.4	2 / 1.4	2 / 1.4	2 / 1.4	2 / 1.4	2 / 1.4
Fan RPM	1140	1140	1140	1140	1140	1140	1140	1140
Number of Blades	3	3	3	3	3	3	3	3
Total Chiller Airflow l/s	7672	7672	11091	11091	11091	22351	22351	22351
Evaporator, Direct Expansion								
Diameter x Length	203x1829	203x1830	203x1981	210x2134	210x2134	248x2438	248x2438	248x2438
Water Volume, liters	34.9	34.9	37.7	46.7	46.7	110.3	110.3	110.3
Maximum Water Side Pressure, bar	10	10	10	10	10	10	10	10
Maximum Refrigerant Side Pressure, bar	24	24	24	24	24	24	24	24
Minimum Chiller Water Flow Rate, l/s	1.6	1.6	1.9	2.2	3.8	3.8	3.8	3.8
Maximum Chiller Water Flow Rate, l/s	3.8	3.8	4.4	10.7	10.7	18.9	18.9	18.9
Water Connections, inches	3	3	3	4	4	6	6	6

**PHYSICAL DATA (METRIC)
YCAL0014E_ - YCAL0124E_**

Model Number YCAL											
0050	0060	0064	0070	0074	0080	0090	0094	0104	0114	0124	0134
179.7	197.7	221.9	246.9	267.3	289.1	292.6	316.2	350.3	390.7	425.6	457.9
169.2	187.5	207.2	231.1	251.8	274.3	280.0	301.8	333.8	374.6	404.8	436.9
2	2	2	2	2	2	2	2	2	2	2	2
27.3/24.5	32.7/32.7	34.1/28.2	34.1/34.1	41.8/37.7	45.5/45.5	43/35	43/43	51/43	51/51	51/51	51/51
27.3/24.5	26/26	30/26	30/30	40/30	40/40	41/34	41/41	49/41	49/49	49/49	49/49
8.3/8.3	8.3/8.3	12.5/12.5	12.5/12.5	12.5/12.5	12.5/12.5	16/16	16/16	24/16	24/24	24/24	24/24
2225	2265	2661	2742	2820	2925	2967	3002	3372	4086	4217	4393
2361	2401	2797	2914	2992	3097	3343	3378	3800	4658	4789	4965
2335	2375	2816	2897	2975	3075	3167	3202	3594	4308	4439	4615
2502	2542	3017	3098	3176	3276	3542	3578	4022	4881	5011	5187
2	2	3	3	3	3	2	2	3/2	3	3	3
4	4	6	6	6	6	4	4	5	6	6	6
53/46	53/53	46/35	46/46	53/46	53/53	88/70	88/88	70/88	70/70	88/70	88/88
12	12	14	14	14	14	16.0	16.0	18.0	21.0	21.0	21.0
2	3	2	2	3	3	3	3	3	3	3	3
512	512	512	512	512	512	512	512	512	512	512	512
4	4	4	4	4	4	6	6	6	8	8	8
2 / 1.4	2 / 1.4	2 / 1.7	2 / 1.7	2 / 1.7	2 / 1.7	2 / 1.8	2 / 1.8	2 / 1.8	2 / 1.8	2 / 1.8	2 / 1.8
1140	1140	1140	1140	1140	1140	1140	1140	1140	1140	1140	1140
3	3	3	3	3	3	3	3	3	3	3	3
22351	21747	26076	26076	25744	25371	37660	37660	39784	50214	50214	50214
248x2438	248x2438	309x2438	309x2438	309x2438	315x2438	356x2438	356x2438	381x2438	381x2438	381x2438	381x2438
110.3	110.3	156.1	156.1	156.1	151.1	200.6	200.6	222.9	222.9	222.9	222.9
10	10	10	10	10	10	10	10	10	10	10	10
24	24	24	24	24	24	24	24	24	24	24	24
3.8	3.8	6.3	6.3	6.3	6.3	7.9	8.7	9.5	10.4	11.4	11.4
18.9	18.9	22.1	22.1	22.1	24.3	33.1	33.1	39.4	39.4	39.4	39.4
6	6	6	6	6	6	8	8	8	8	8	8

APPENDIX 1 – ISOLATOR SELECTIONS

ALUMINUM FIN COILS

1" DEFLECTION ISOLATOR SELECTION - VMC TYPE								
YCAL	A	B	C	D	E	F	G	H
0014	CP-1-27	CP-1-26	CP-1-28	CP-1-27	---	---	---	---
0020	CP-1-27	CP-1-26	CP-1-28	CP-1-27	---	---	---	---
0024	CP-1-28	CP-1-27	CP-1-28	CP-1-28	---	---	---	---
0030	CP-1-28	CP-1-27	CP-1-28	CP-1-28	---	---	---	---
0034	CP-1-28	CP-1-28	CP-1-31	CP-1-28	---	---	---	---
0040	CP-2-27	CP-2-27	CP-2-27	CP-2-27	---	---	---	---
0042	CP-2-27	CP-2-27	CP-2-27	CP-2-27	---	---	---	---
0044	CP-2-27	CP-2-27	CP-2-27	CP-2-27	---	---	---	---
0050	CP-2-27	CP-2-27	CP-2-27	CP-2-27	---	---	---	---
0060	CP-2-27	CP-2-27	CP-2-27	CP-2-27	---	---	---	---
0064	CP-2-28	CP-2-28	CP-2-28	CP-2-28	---	---	---	---
0070	CP-2-28	CP-2-28	CP-2-28	CP-2-28	---	---	---	---
0074	CP-2-28	CP-2-28	CP-2-28	CP-2-28	---	---	---	---
0080	CP-2-28	CP-2-28	CP-2-28	CP-2-28	---	---	---	---
0090	CP-2-27	CP-2-27	CP-2-26	CP-2-27	CP-2-27	CP-2-26	---	---
0094	CP-2-27	CP-2-27	CP-2-26	CP-2-27	CP-2-27	CP-2-26	---	---
0104	CP-2-27	CP-2-27	CP-2-26	CP-2-25	CP-2-27	CP-2-26	CP-2-26	CP-2-25
0114	CP-2-28	CP-2-27	CP-2-27	CP-2-26	CP-2-27	CP-2-27	CP-2-26	CP-2-25
0124	CP-2-28	CP-2-27	CP-2-27	CP-2-26	CP-2-27	CP-2-27	CP-2-26	CP-2-25
0134	CP-2-28	CP-2-27	CP-2-27	CP-2-26	CP-2-27	CP-2-27	CP-2-26	CP-2-25

SEISMIC ISOLATOR SELECTION - VMC TYPE

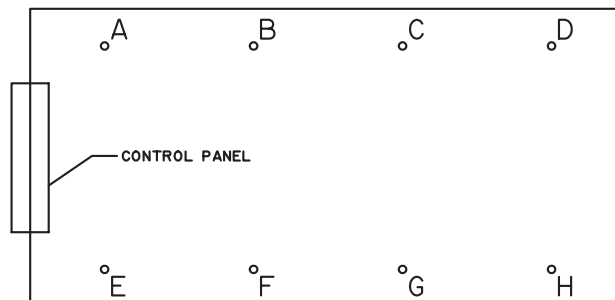
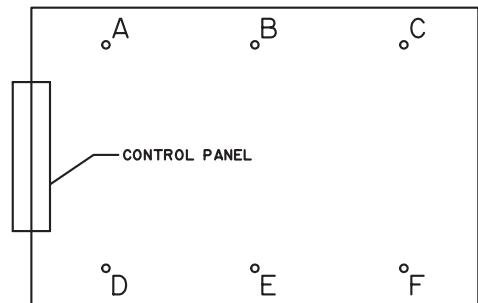
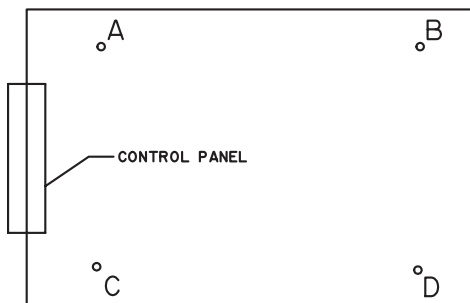
SEISMIC ISOLATOR SELECTION - VMC TYPE								
YCAL	A	B	C	D	E	F	G	H
0014	AEQM-97	AEQM-96	AEQM-98	AEQM-97	---	---	---	---
0020	AEQM-97	AEQM-96	AEQM-98	AEQM-97	---	---	---	---
0024	AEQM-98	AEQM-97	AEQM-98	AEQM-98	---	---	---	---
0030	AEQM-98	AEQM-97	AEQM-98	AEQM-98	---	---	---	---
0034	AEQM-98	AEQM-98	AEQM-99	AEQM-98	---	---	---	---
0040	AEQM-1300	AEQM-1300	AEQM-1300	AEQM-1300	---	---	---	---
0042	AEQM-1300	AEQM-1300	AEQM-1300	AEQM-1300	---	---	---	---
0044	AEQM-1300	AEQM-1300	AEQM-1300	AEQM-1300	---	---	---	---
0050	AEQM-1600	AEQM-1300	AEQM-1600	AEQM-1300	---	---	---	---
0060	AEQM-1600	AEQM-1300	AEQM-1600	AEQM-1300	---	---	---	---
0064	AEQM-1625	AEQM-1600	AEQM-1625	AEQM-1600	---	---	---	---
0070	AEQM-1625	AEQM-1600	AEQM-1625	AEQM-1600	---	---	---	---
0074	AEQM-1625	AEQM-1600	AEQM-1625	AEQM-1600	---	---	---	---
0080	AEQM-1625	AEQM-1600	AEQM-1625	AEQM-1600	---	---	---	---
0090	AEQM-1600	AEQM-1600	AEQM-1300	AEQM-1600	AEQM-1300	AEQM-1300	---	---
0094	AEQM-1600	AEQM-1600	AEQM-1300	AEQM-1600	AEQM-1300	AEQM-1300	---	---
0104	AEQM-1600	AEQM-1300	AEQM-1000	AEQM-1000	AEQM-1600	AEQM-1300	AEQM-1000	AEQM-1000
0114	AEQM-1625	AEQM-1600	AEQM-1300	AEQM-1000	AEQM-1600	AEQM-1300	AEQM-1000	AEQM-1000
0124	AEQM-1625	AEQM-1600	AEQM-1300	AEQM-1000	AEQM-1600	AEQM-1300	AEQM-1000	AEQM-1000
0134	AEQM-1625	AEQM-1600	AEQM-1300	AEQM-1000	AEQM-1600	AEQM-1300	AEQM-1000	AEQM-1000

APPENDIX 1 – ISOLATOR SELECTIONS

ALUMINUM FIN COILS - CON'D

NEOPRENE ISOLATOR SELECTION - VMC TYPE RD

YCAL	A	B	C	D	E	F	G	H
0014	-3 Grn	-2 Gray	-3 Gray	-3 Grn	---	---	---	---
0020	-3 Grn	-2 Gray	-3 Gray	-3 Grn	---	---	---	---
0024	-3 Gray	-3 Grn	-3 Gray	-3 Grn	---	---	---	---
0030	-3 Gray	-3 Grn	-3 Gray	-3 Grn	---	---	---	---
0034	-3 Gray	-3 Grn	-3 Gray	-3 Grn	---	---	---	---
0040	-4 Blk	-4 Blk	-4 Blk	-4 Blk	---	---	---	---
0042	-4 Blk	-4 Blk	-4 Blk	-4 Blk	---	---	---	---
0044	-4 Blk	-4 Blk	-4 Blk	-4 Blk	---	---	---	---
0050	-4 Blk	-4 Blk	-4 Blk	-4 Blk	---	---	---	---
0060	-4 Blk	-4 Blk	-4 Blk	-4 Blk	---	---	---	---
0064	-4 Red	-4 Red	-4 Red	-4 Red	---	---	---	---
0070	-4 Red	-4 Red	-4 Red	-4 Red	---	---	---	---
0074	-4 Red	-4 Red	-4 Red	-4 Red	---	---	---	---
0080	-4 Red	-4 Red	-4 Red	-4 Red	---	---	---	---
0090	-4 Blk	-4 Blk	-3 Gray	-4 Blk	-4 Blk	-3 Gray	---	---
0094	-4 Blk	-4 Blk	-3 Gray	-4 Blk	-4 Blk	-3 Gray	---	---
0104	-4 Blk	-4 Blk	-3 Gray	-3 Grn	-4 Blk	-3 Gray	-3 Gray	-3 Grn
0114	-4 Red	-4 Blk	-4 Blk	-3 Gray	-3 Gray	-4 Blk	-3 Gray	-3 Gray
0124	-4 Red	-4 Blk	-4 Blk	-3 Gray	-3 Gray	-4 Blk	-3 Gray	-3 Gray
0134	-4 Red	-4 Blk	-4 Blk	-3 Gray	-3 Gray	-4 Blk	-3 Gray	-3 Gray



APPENDIX 1 – ISOLATOR SELECTIONS

COPPER FIN COILS

1" DEFLECTION ISOLATOR SELECTION - VMC TYPE

Model YCAL	A	B	C	D	E	F	G	H
0014	CP-1-27	CP-1-27	CP-1-27	CP-1-27	---	---	---	---
0020	CP-1-27	CP-1-27	CP-1-27	CP-1-27	---	---	---	---
0024	CP-1-27	CP-1-27	CP-1-27	CP-1-27	---	---	---	---
0030	CP-1-27	CP-1-28	CP-1-27	CP-1-28	---	---	---	---
0034	CP-1-28	CP-1-28	CP-1-28	CP-1-28	---	---	---	---
0040	CP-2-27	CP-2-27	CP-2-27	CP-2-27	---	---	---	---
0042	CP-2-27	CP-2-27	CP-2-27	CP-2-27	---	---	---	---
0044	CP-2-27	CP-2-27	CP-2-27	CP-2-27	---	---	---	---
0050	CP-2-27	CP-2-27	CP-2-27	CP-2-27	---	---	---	---
0060	CP-2-28	CP-2-28	CP-2-28	CP-2-28	---	---	---	---
0064	CP-2-31	CP-2-28	CP-2-31	CP-2-28	---	---	---	---
0070	CP-2-31	CP-2-31	CP-2-31	CP-2-31	---	---	---	---
0074	CP-2-31	CP-2-31	CP-2-31	CP-2-31	---	---	---	---
0080	CP-2-31	CP-2-31	CP-2-31	CP-2-31	---	---	---	---
0090	CP-2-28	CP-2-27	CP-2-27	CP-2-28	CP-2-27	CP-2-27	---	---
0094	CP-2-28	CP-2-27	CP-2-27	CP-2-28	CP-2-27	CP-2-27	---	---
0104	CP-2-28	CP-2-27	CP-2-26	CP-2-26	CP-2-28	CP-2-27	CP-2-26	CP-2-25
0114	CP-2-32	CP-2-31	CP-2-28	CP-2-27	CP-2-31	CP-2-28	CP-2-28	CP-2-26
0124	CP-2-32	CP-2-31	CP-2-28	CP-2-27	CP-2-31	CP-2-28	CP-2-28	CP-2-26
0134	CP-2-32	CP-2-31	CP-2-28	CP-2-27	CP-2-31	CP-2-28	CP-2-28	CP-2-26

SEISMIC ISOLATOR SELECTION - VMC TYPE

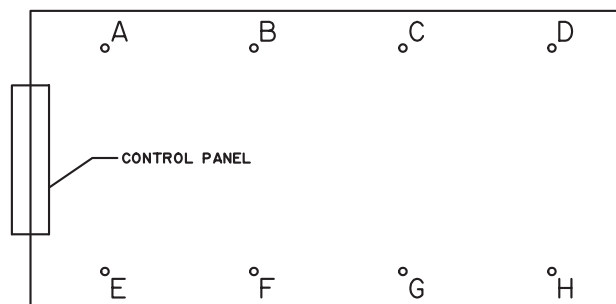
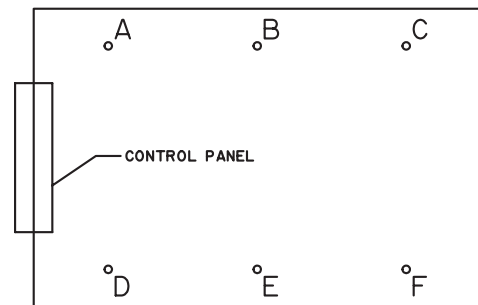
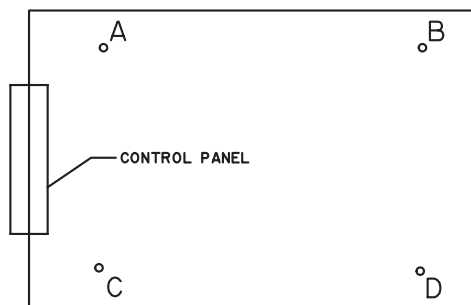
Model YCAL	A	B	C	D	E	F	G	H
0014	AEQM-97	AEQM-97	AEQM-97	AEQM-97	---	---	---	---
0020	AEQM-97	AEQM-97	AEQM-97	AEQM-97	---	---	---	---
0024	AEQM-97	AEQM-97	AEQM-97	AEQM-97	---	---	---	---
0030	AEQM-98	AEQM-98	AEQM-98	AEQM-98	---	---	---	---
0034	AEQM-98	AEQM-98	AEQM-98	AEQM-98	---	---	---	---
0040	AEQM-1600	AEQM-1600	AEQM-1600	AEQM-1600	---	---	---	---
0042	AEQM-1600	AEQM-1600	AEQM-1600	AEQM-1600	---	---	---	---
0044	AEQM-1600	AEQM-1600	AEQM-1600	AEQM-1600	---	---	---	---
0050	AEQM-1600	AEQM-1600	AEQM-1600	AEQM-1600	---	---	---	---
0060	AEQM-1625	AEQM-1625	AEQM-1625	AEQM-1625	---	---	---	---
0064	AEQM-1628	AEQM-1625	AEQM-1628	AEQM-1625	---	---	---	---
0070	AEQM-1628	AEQM-1628	AEQM-1628	AEQM-1628	---	---	---	---
0074	AEQM-1628	AEQM-1628	AEQM-1628	AEQM-1628	---	---	---	---
0080	AEQM-1628	AEQM-1628	AEQM-1628	AEQM-1628	---	---	---	---
0090	AEQM-1600	AEQM-1600	AEQM-1600	AEQM-1600	AEQM-1600	AEQM-1600	---	---
0094	AEQM-1600	AEQM-1600	AEQM-1600	AEQM-1600	AEQM-1600	AEQM-1600	---	---
0104	AEQM-1625	AEQM-1600	AEQM-1300	AEQM-1000	AEQM-1600	AEQM-1300	AEQM-1300	AEQM-1000
0114	AEQM-1625	AEQM-1625	AEQM-1600	AEQM-1000	AEQM-1625	AEQM-1600	AEQM-1300	AEQM-1000
0124	AEQM-1625	AEQM-1625	AEQM-1600	AEQM-1000	AEQM-1625	AEQM-1600	AEQM-1300	AEQM-1000
0134	AEQM-1625	AEQM-1625	AEQM-1600	AEQM-1000	AEQM-1625	AEQM-1600	AEQM-1300	AEQM-1000

APPENDIX 1 – ISOLATOR SELECTIONS

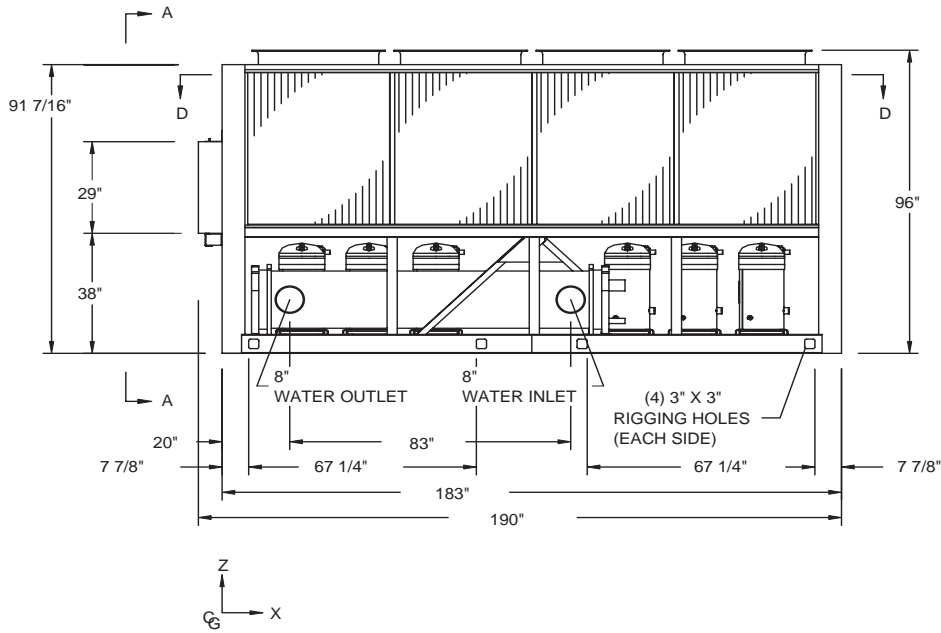
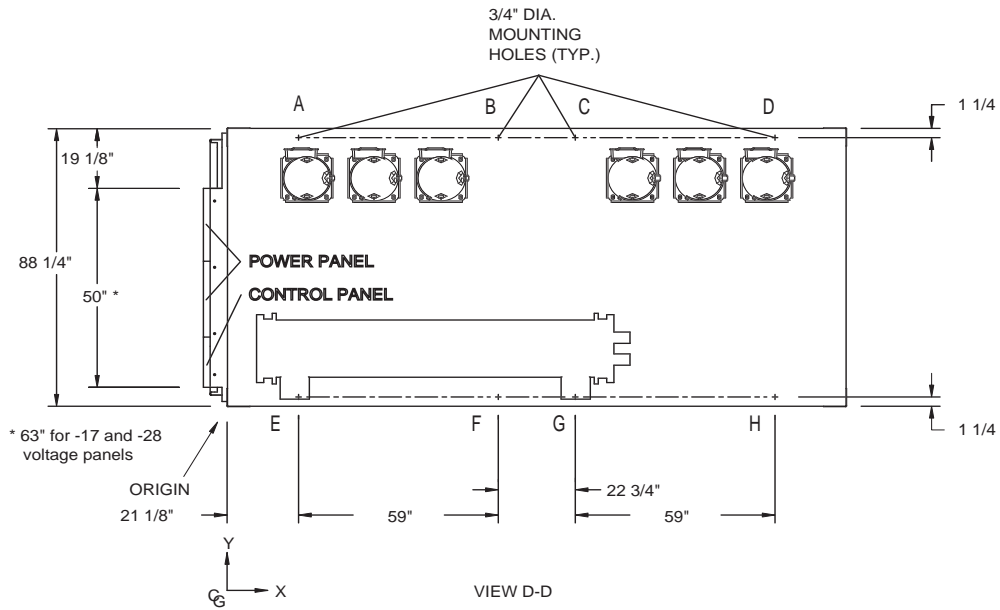
COPPER FIN COILS - CON'D

NEOPRENE ISOLATOR SELECTION - VMC TYPE

Copper Fin, Neoprene Mount Selections								
YCAL	VMC Type RD							
	A	B	C	D	E	F	G	H
0014	-3 Grn	-3 Grn	-3 Gray	-3 Grn	---	---	---	---
0020	-3 Grn	-3 Grn	-3 Gray	-3 Grn	---	---	---	---
0024	-3 Gray	-3 Gray	-3 Gray	-3 Gray	---	---	---	---
0030	-3 Gray	-3 Gray	-3 Gray	-3 Gray	---	---	---	---
0034	-3 Gray	-3 Gray	-3 Gray	-3 Gray	---	---	---	---
0040	-4 Blk	-4 Blk	-4 Blk	-4 Blk	---	---	---	---
0042	-4 Blk	-4 Blk	-4 Blk	-4 Blk	---	---	---	---
0044	-4 Blk	-4 Blk	-4 Blk	-4 Blk	---	---	---	---
0050	-4 Blk	-4 Blk	-4 Blk	-4 Blk	---	---	---	---
0060	-4 Blk	-4 Blk	-4 Blk	-4 Blk	---	---	---	---
0064	-4 Red	-4 Red	-4 Red	-4 Red	---	---	---	---
0070	-4 Red	-4 Red	-4 Red	-4 Red	---	---	---	---
0074	-4 Red	-4 Red	-4 Red	-4 Red	---	---	---	---
0080	-4 Red	-4 Red	-4 Red	-4 Red	---	---	---	---
0090	-4 Blk	-4 Blk	-4 Blk	-4 Blk	-4 Blk	-4 Blk	---	---
0094	-4 Blk	-4 Blk	-4 Blk	-4 Blk	-4 Blk	-4 Blk	---	---
0104	-4 Blk	-4 Blk	-3 Gray	-3 Gray	-4 Blk	-4 Blk	-3 Gray	-3 Gray
0114	-4 Red	-4 Red	-4 Blk	-4 Blk	-4 Red	-4 Blk	-4 Blk	-3 Gray
0124	-4 Red	-4 Red	-4 Blk	-4 Blk	-4 Red	-4 Blk	-4 Blk	-3 Gray
0134	-4 Red	-4 Red	-4 Blk	-4 Blk	-4 Red	-4 Blk	-4 Blk	-3 Gray



DIMENSIONS - YCAL0114 - YCAL0134 (ENGLISH)



LD08705

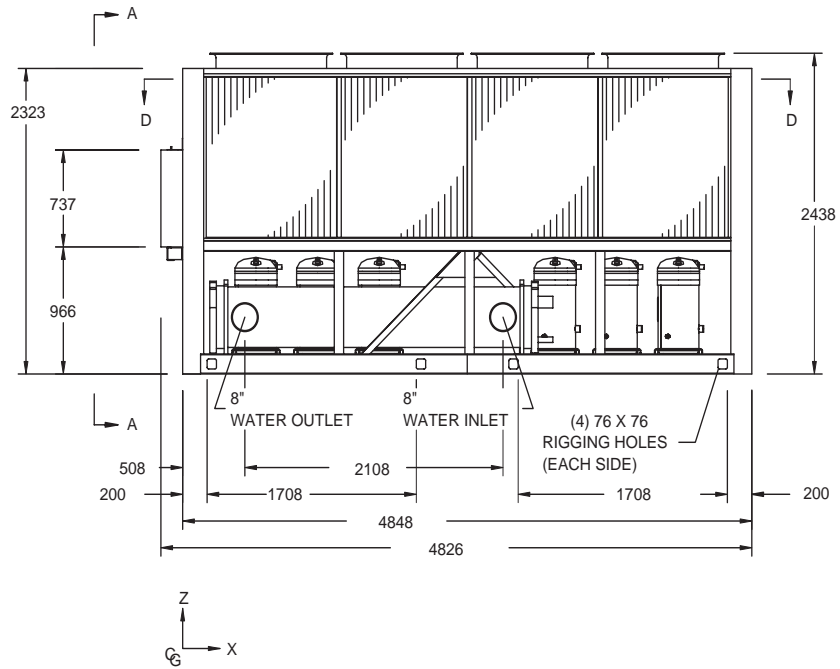
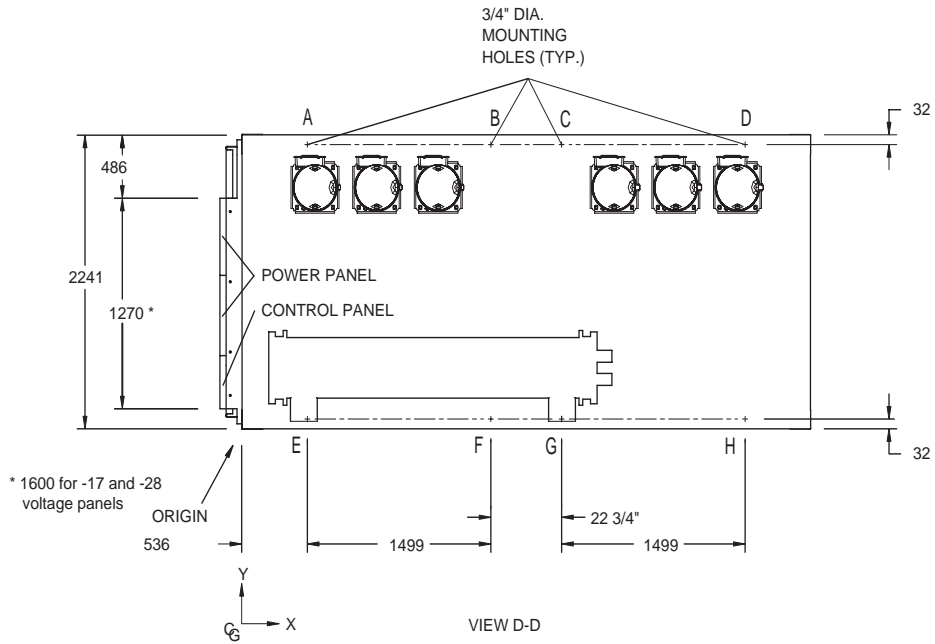
ALUMINUM

YCAL	Center of Gravity (in.)		
	X	Y	Z
0114	82.2	45.5	43.7
0124	81.1	46.2	43.1
0134	81.9	46.8	42.5

COPPER

YCAL	Center of Gravity (in.)		
	X	Y	Z
0114	83.3	45.2	45.3
0124	82.3	45.9	44.7
0134	82.9	46.5	44.2

DIMENSIONS - YCAL0114 - YCAL0134 (METRIC)



LD08711

ALUMINUM

YCAL	Center of Gravity (mm)		
	X	Y	Z
0114	2087.1	1155.7	1110
0124	2058.7	1172.5	1093.5
0134	2079.0	1189.2	1080.3

COPPER

YCAL	Center of Gravity (mm)		
	X	Y	Z
0114	2114.8	1148.3	1150.6
0124	2089.2	1166.1	1134.6
0134	2106.2	1181.1	1121.4

