



# COMPANION FLANGE KIT AIR COOLED LIQUID CHILLERS

## INSTALLATION INSTRUCTIONS

Supersedes: FORM 150.02-NM3 (889)

695

FORM 150.02-NM3

### FOR MODELS

**YCAZ33BA3 - YCAJ99NH8 - 60 HZ - STYLE A**

**YEAZ33BP3 - YEAJ999RX7 - 50 & 60 HZ - STYLE A**

**YDAJ87KU6 - YDAJ99MW9 - 50 & 60 HZ - STYLE A**

#### GENERAL

All standard shell and tube liquid coolers of the chiller models listed above have water (liquid) connections designed for use with Victaulic couplings.

Since flanged connections are occasionally preferred, the flange kit option is offered as an accessory for field installation.

Each kit consists of the following items for each water or liquid nozzle:

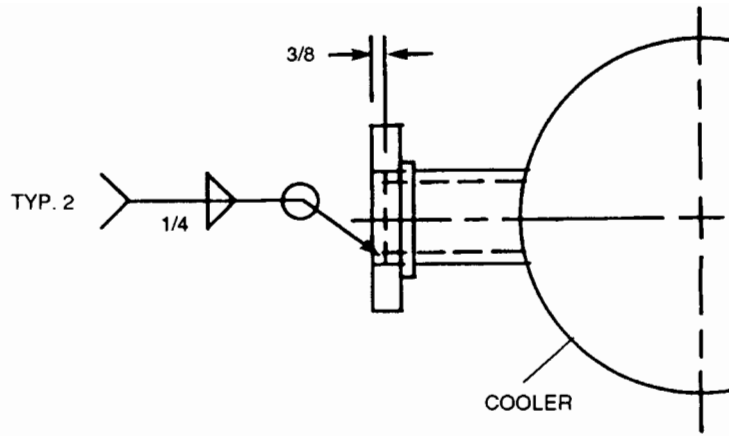
1. ANSI 150 psi, raised face, slip-on flange and companion flange, to match the nozzle size.
2. Gasket, 1/16" thick, non-asbestos with nitrile binder.
3. Cap screws and nuts of proper size and quantity.
4. Instruction Drawing.

#### INSTALLATION

Before installing the flange kits it is important to review and follow the general instructions for "Field Water Piping", "Chilled Water Piping" and "Condenser Water Piping", where applicable, found in the "Installation, Operation and Maintenance Instructions".

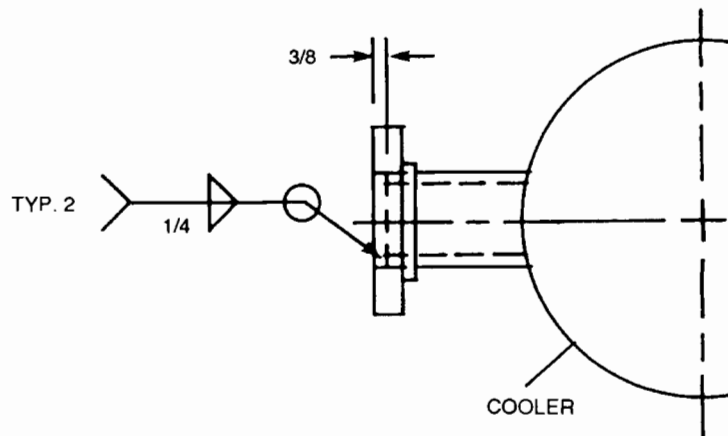
Each water nozzle is provided with a groove as prescribed for use with Victaulic couplings. The groove will be covered by the flange and will not interfere with the flange weldments provided the flanges are attached in accordance with the Figures on pages 2, 3 and 4.

The flanges should be installed with the face perpendicular to the nozzle centerline and the bolt holes straddling the flange centerlines. Welding should be done in accordance with the weld symbol shown using a shielded metal arc welding procedure with low hydrogen electrodes.



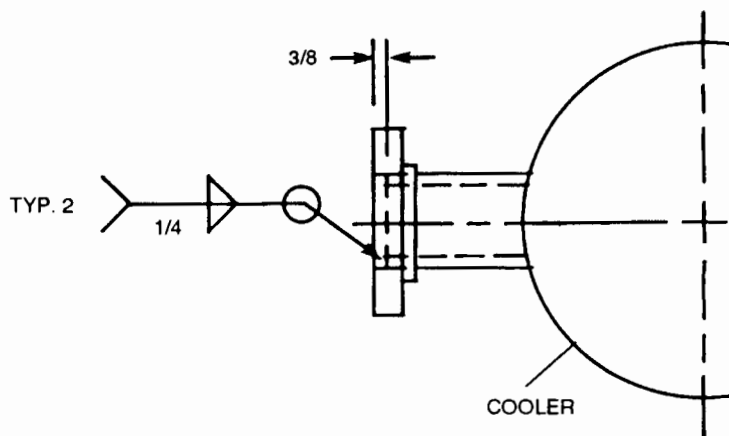
MODEL	COOLER NOZZLE SIZE (IN.)
YCAZ33BA3	4
YCAZ44BA3	4
YCAZ74BB3	4
YEAZ33BP3, AP2	4
YEAZ44BP3, AP2	4
YEAZ74BQ3, BP2	4

FIG. 1



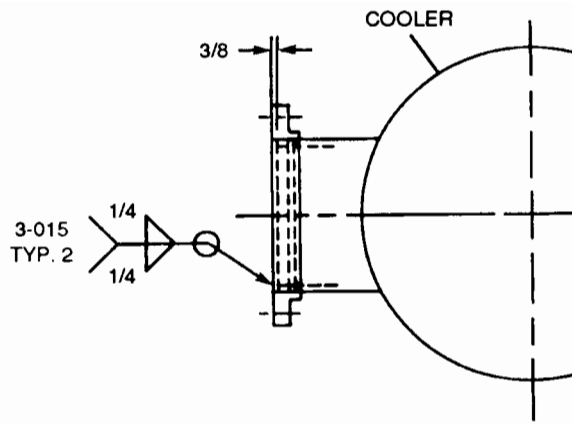
MODEL	COOLER NOZZLE SIZE (IN.)
YCAZ77CB3	6
YCAZ88DB3	6
YCAZ88EE6	6
YEAZ77CQ3, CQ2	6
YEAZ88DQ3, DQ2	6
YEAZ88DR6, J44DR7	6
YEAJ44DR6, 55DR7	6

FIG. 2



MODEL	COOLER NOZZLE SIZE (IN.)
YCAJ44HE8	8
YCAJ54HE8	8
YCAJ55HE8	8
YCAJ65HE8	8
YCAJ66HF6	8
YCAJ76HF6	8
YCAJ77KF6	8
YCAJ88NH8	8
YCAJ98NH8	8
YCAJ99NH8	8
YEAJ44HT6	8
YEAJ55HT7	8
YEAJ55HT8	8
YEAJ65HT9	8
YEAJ65HT8	8
YEAJ76HT9	8
YEAJ66MT8	8
YEAJ77MT9	8
YEAJ76HU6	8
YEAJ77HU7	8
YEAJ77HU6	8
YEAJ87HU7	8
YEAJ87KU6	8
YEAJ97KU7	8
YEAJ88MU6	8
YEAJ98MU7	8
YEAJ98MV6	8
YEAJ99MU7	8
YEAJ99MW6	8
YEAJ99MW9	8
YDAJ87HU7	8
YDAJ87KU6	8
YDAJ97KU7	8
YDAJ88MU6, 98MU7	8
YDAJ99MW6, 99MU7	8
YDAJ99MW9	8

FIG. 3



MODEL	COOLER NOZZLE SIZE (IN.)
YEAJ777PX6, RX7	10
YEAJ878PX6, 977RX7	10
YEAJ888RX6, 979RX7	10
YEAJ999RX6, 999RX7	10

FIG. 4

