



MILLENNIUM®
AIR-COOLED LIQUID CHILLERS
HERMETIC SCROLL 60 HZ

RENEWAL PARTS

Supercedes: 150.62-RP1 (1001)

Form: 150.62-RP1 (202)

MODELS YCAL0014SC THROUGH YCAL0080SC
STYLE A



29302A



ALLY

10 - 70 TON
35 - 246 Kw
60 Hz



200-3-60
230-3-60
315-3-60
460-3-60
575-3-60
MODELS ONLY

TABLE OF CONTENTS

	<u>PAGE</u>
UNIT NOMENCLATURE NAMEPLATE ENGINEERING DATA	3
EVAPORATOR	
EVAPORATOR COMPONENTS	4
CONDENSER	
CONDENSER COIL COMPONENTS	8
FAN	
FAN COMPONENTS	10
PIPING	
REFRIGERANT AND OIL PIPING COMPONENTS	12
COMPRESSOR	
COMPRESSOR	16
CONTROL AND POWER PANELS	
CONTROL PANEL AND POWER PANEL	20
TRANSDUCERS, PRESSURE CUTOUTS AND TEMP SENSORS	48
WIRE HARNESS CONNECTORS - FIELD REPLACEMENT PART NUMBERS	50
CHILLER OPTIONS	
YCAL CHILLER OPTIONS - KITS	52
ENCLOSURE KIT OPTIONS	54
REMOTE CONTROL CENTER	56
REMOTE CURRENT/TEMPERATURE RESET PARTS BREAKDOWN	57
RECOMMENDED SPARE PARTS	58

WARNING

HIGH VOLTAGE

**Is used in the operation of this equipment.
DEATH OR SERIOUS INJURY**

may result if personnel fail to observe safety precautions.

Work on electronic equipment should not be undertaken unless the individual(s) have been trained in the proper maintenance of equipment and is (are) familiar with its potential hazards.

Shut off power supply to the equipment before beginning work and follow lockout procedures. When working inside equipment with power off, take care to discharge every capacitor likely to hold dangerous potential.

Be careful not to contact high voltage connections when installing or operating this equipment.

LOW VOLTAGE

DO NOT be misled by the term "low voltage." Voltages as low as 50 volts may cause death.

UNIT NOMENCLATURE NAMEPLATE ENGINEERING DATA

Basic Part Number

YCAL0060SC28XAA

1	2	3	4	5	6	7	8	9	10	11	12	13	14	15
BASE PRODUCT TYPE				NOMINAL CAPACITY				UNIT DESIGNATOR	REFRIGERANT	VOLTAGE/STARTER			DESIGN/DEVELOPMENT LEVEL	
Y	C	A		#	#	#	#	S	C	1	7		A	
: YORK : Chiller : Air Cooled L : Scroll				Tons/Kw 0014 to 0080				Standard Unit Heat Pump	:R-22 :R-407C	:200/3/60 :230/3/60 :380/3/60 :460/3/60 :575/3/60 X :Across the Line			:Design Series A :Engineering Change or PIN Level	

PART NUMBER – letter codes

16 17 18 19	20 21 22 23 24 25 26 27 28	29 30 31 32 33 34 35 36 37
POWER FIELD	CONTROLS FIELD	COMPRESSOR / PIPING FIELD
X X : MP Supply TB S X : SP Supply TB S D : SP NF Disconnect Switch B X : SP Circuit Breaker w/ Lockable Handle T : Transformer 115/24V (factory) C : Power Factor Capacitor	L : Low Ambient Kit (factory) H : High Ambient Kit (factory) A : Both Low / High Ambient (factory) T : BAS/EMS Temp. Reset / Offset S : Spanish LCD & Keypad Display F : French LCD & Keypad Display G : German LCD & Keypad Display R : Discharge Pressure Transducers / Readout Kit S : Suction Pressure Transducers / Readout Kit B : Both Discharge & Suction Pressure Transducers / Readout L : N. American Safety Code (cU.L./cETL) N : No Listing (typically 50 HZ non-CE, non-U.L.) R : Remote Control Panel S : Sequence Control & Automatic Lead Transfer	# : Low Temp. Brine (LBRT) # : Thermal Storage T : Chicago Relief Code S : C : 1 : Hot Gas By-Pass (# circuits)

MP = Multiple Point
SP = Single Point
NF = Non-Fused
TB = Terminal Block
Ser. = Service
Ind. Sys. Brkr. & L. Ext. Handles = Individual System Breaker & Lockable External Handle

38 39 40 41 42 43 44	45 46 47	48 49 50 51 52 53 54
EVAP. FIELD	CONDENSER FIELD	CABINET FIELD
3 : 300 PSIG DWP Waterside D : Double Thick Insulation W : Weld Flange Kit S : Flow Switch A : ASME Pressure Vessel & Associated Codes R : Remote DX Cooler	X : Aluminum C : Copper B : Black Fin P : Phenolic X : TEAO Fan Motors	X : Wire Condenser Headers Only (factory) 1 : Wire (Full Unit) Enc. Panels (factory) 2 : Wire (Full Unit) Enc. Panels (field) 3 : Wire/Louvered Enc. Panels (factory) 4 : Wire/Louvered Enc. Panels (field) 5 : Louvered (Cond. Only) Enc. Panels (factory) 6 : Louvered (Cond. Only) Enc. Panels (field) 7 : Louvered (Full Unit) Enc. Panels (factory) 8 : Louvered (Full Unit) Enc. Panels (field) B : Acoustic Sound Blanket L : Low Sound Fans 1 : 1" Deflection S : Seismic N : Neoprene Pads

55
EXTENDED FIELD

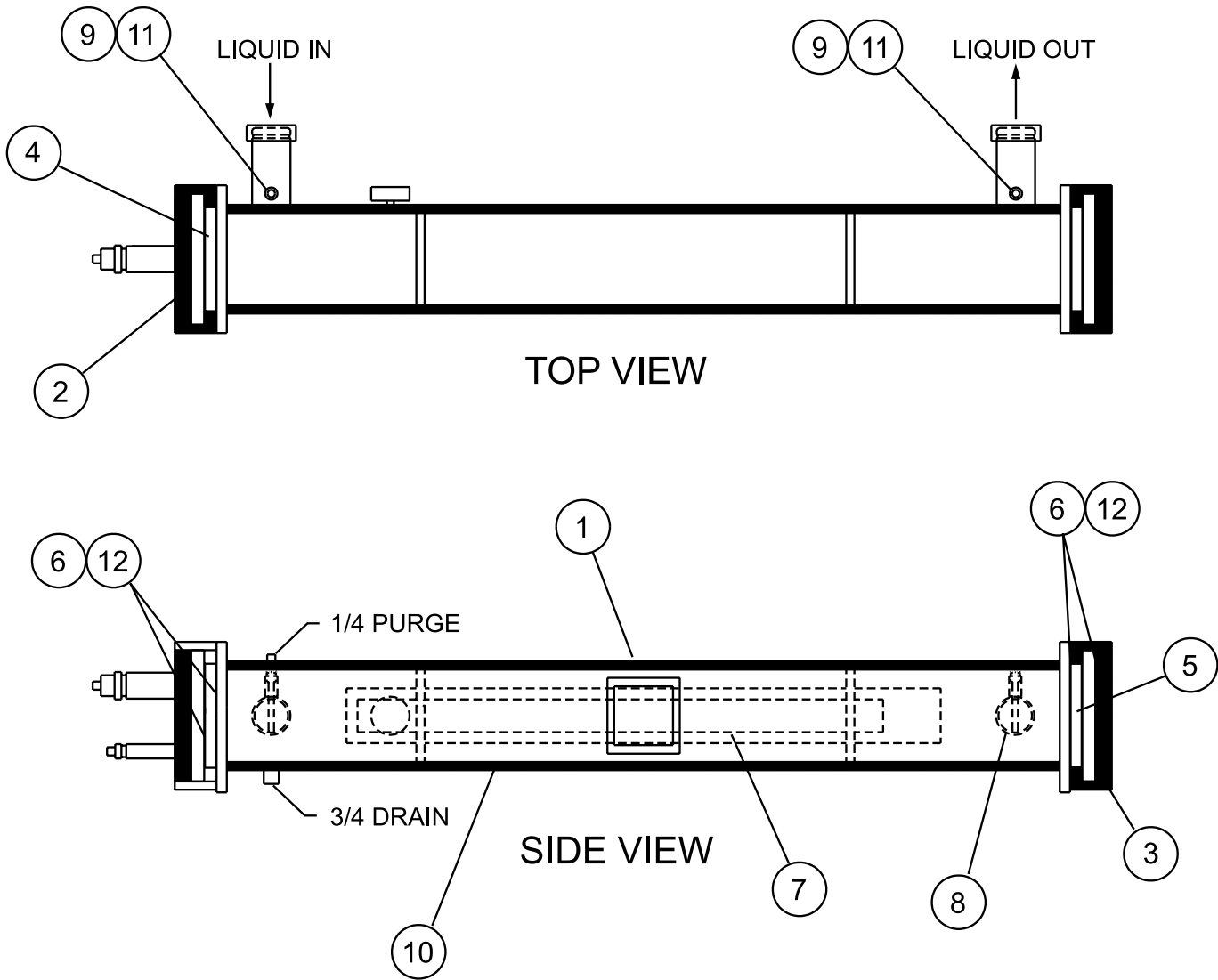
X	: 1st Year Parts Only
B	: 1st Year Parts & Labor
C	: 2nd Year Parts Only
D	: 2nd Year Parts & Labor
E	: 5 Year Compressor Parts Only
F	: 5 Year Compressor Parts & Labor Only
G	: 5 Year Units Parts Only
H	: 5 Year Unit Parts & Labor

NOTES:

- Q :DENOTES SPECIAL / S.Q.
- # :DENOTES STANDARD
- X :w/in OPTIONS FIELD, DENOTES NO OPTION SELECTED
- Agency Files (i.e. U.L. / ETL; CE; ARI; ETC.) will contain info. based on the first 14 characters only.

EVAPORATOR COMPONENTS

Service Note: Pin Location 38 in Model Number will be "X" for 150# cooler.
 "3" for 300# cooler.



FLOW SWITCHES:

Standard 150# DWP cooler - 024-26116-000
 Optional 300# DWP cooler - 024-12144-000

30968-000

FIG. 1 –EVAPORATOR COMPONENTS - MODELS YCAL0014 AND YCAL0020 SHOWN
 (REF. TABLES 1 AND 2, PAGES 5, 6 AND 7)

EVAPORATOR COMPONENTS (CONT'D)

TABLE 1 – EVAPORATOR COMPONENTS - 150 PSIG (SEE FIG. 1, PAGE 4)

ITEM NUMBER	QTY. PER UNIT	DESCRIPTION	DWP	UNIT MODEL YCAL0014 AND 0020	UNIT MODEL YCAL0024	UNIT MODEL YCAL0030
1	1	Cooler, less Heater & Insulation (Items 2 thru 6)	ALL	375-30960-000 (8" X 78")	375-30961-000 (8" X 84")	375-44207-000 (8" X 90")
2	1	Head, Conn. End	ALL	375-31714-000	375-31714-000	375-44209-000
3	1	Head, Back End	ALL	075-31716-000	075-31716-000	075-31716-000
4	1	Baffle, Pass, Conn. End	ALL	376-60141-000	376-60141-000	375-26454-000
5	1	Baffle, Pass, Back End	ALL	076-60140-000	076-60140-000	075-26456-000
6	4	Gasket, Pass Baffle and Head	ALL	075-38540-000	075-38540-000	075-38537-000
7	1	Heater, Cooler 180 Watt	ALL	025-27995-001	025-27995-001	025-27995-001
8	2	Connector, Water	ALL	375-38535-000	375-38535-000	375-38535-000
9	1	Well, Thermo	ALL	026-37512-000	026-37512-000	026-37512-000
10	2	Insulation (3/4" x 49" x 65")	ALL	010-05997-000	010-05997-000	010-05997-000
	2	Insulation (1 1/2" x 49" x 65")	ALL	010-05998-000	010-05998-000	010-05998-000
11	1	Sensor, Water Temp.	ALL	025-29964-000	025-29964-000	025-29964-000
12	1	Adhesive (Use with #6)	ALL	013-02293-000	013-02293-000	013-02293-000

TABLE 1 (cont'd) – EVAPORATOR COMPONENTS - 150 PSIG (SEE FIG. 1, PAGE 4)

ITEM NUMBER	QTY. PER UNIT	DESCRIPTION	DWP	UNIT MODEL YCAL0034	UNIT MODEL YCAL0040 AND 0044	UNIT MODEL YCAL0050 AND 0060
1	1	Cooler, less Heater & Insulation (Items 2 thru 6)	150	375-40906-000 (10" x 90")	375-36066-000 (12" x 104")	375-36066-000 (12" x 104")
2	2	Head, Conn. End	ALL	375-25883-000	375-37895-000	375-37895-000
3	1	Head, Back End	ALL	375-25886-000	075-37892-000	075-37892-000
4	1	Baffle, Pass, Conn. End	ALL	375-25879-000	075-37853-000	075-37853-000
5	1	Baffle, Pass, Back End	ALL	075-25882-000	075-37854-000	075-37854-000
6	4	Gasket, Pass Baffle and Head	ALL	075-38531-000	075-37856-000	075-37856-000
7	2	Heater, Cooler 280 Watt	ALL	025-27995-002	025-22691-000	025-22691-000
8	1	Connector, Water	ALL	375-38529-000	375-37891-000	375-37891-000
9	1	Bulb, Well	ALL	026-32328-000	026-32328-000	026-32328-000
10	2.5	Insulation (3/4" x 49" x 65")	ALL	010-05997-000	010-05997-000	010-05997-000
	2.5	Insulation (1 1/2" x 49" x 65")	ALL	010-05998-000	010-05998-000	010-05998-000
11	1	Sensor, Water Temp.	ALL	025-29964-000	025-29964-000	025-29964-000
12	1	Adhesive (Use with #6)	ALL	013-02293-000	013-02293-000	013-02293-000

EVAPORATOR COMPONENTS (CONT'D)

TABLE 1 (CONT'D) – EVAPORATOR COMPONENTS - 150 PSIG (SEE FIG. 1, PAGE 4)

ITEM NUMBER	QTY. PER UNIT	DESCRIPTION	DWP	UNIT MODEL YCAL0064, 0070 AND 0074	UNIT MODEL YCAL0080
1	1	Cooler, less Heater & Insulation (Items 2 thru 6)	150	375-38501-000 (15" x 105")	375-37898-000 (15" x 105")
2	2	Head, Conn. End	ALL	375-38519-000	375-38114-000
3	1	Head, Back End	ALL	075-38518-000	075-38518-000
4	1	Baffle, Pass, Conn. End	ALL	375-38509-000	375-38105-000
5	1	Baffle, Pass, Back End	ALL	375-38514-000	375-38110-000
6	4	Gasket, Pass Baffle and Head	ALL	075-38517-000	075-38118-000
7	2	Heater, Cooler 420 Watt	ALL	025-22692-000	025-22692-000
8	1	Connector, Water	ALL	375-38507-000	375-38507-000
9	1	Bulb, Well	ALL	026-32328-000	026-32328-000
10	3	Insulation (3/4" x 49" x 65")	ALL	010-05997-000	010-05997-000
	3	Insulation (1 1/2" x 49" x 65")	ALL	010-05998-000	010-05998-000
11	1	Sensor, Water Temp.	ALL	025-29964-000	025-29964-000
12	1	Adhesive (Use with #6)	ALL	013-02293-000	013-02293-000

TABLE 2 – EVAPORATOR COMPONENTS - 300 PSIG (SEE FIG. 1, PAGE 4)

ITEM NUMBER	QTY. PER UNIT	DESCRIPTION	DWP	UNIT MODEL YCAL0014 AND 0020	UNIT MODEL YCAL0024	UNIT MODEL YCAL0030
1	1	Cooler, less Heater & Insulation (Items 2 thru 6)	ALL	375-39905-000 (8" X 78")	375-39906-000 (8" X 84")	375-39912-000 (8" X 90")
2	1	Head, Conn. End	ALL	375-31714-000	375-31714-000	375-31714-000
3	1	Head, Back End	ALL	075-31716-000	075-31716-000	075-31716-000
4	1	Baffle, Pass, Conn. End	ALL	376-60141-000	376-60141-000	375-26454-000
5	1	Baffle, Pass, Back End	ALL	076-60140-000	076-60140-000	075-26456-000
6	4	Gasket, Pass Baffle and Head	ALL	075-38540-000	075-38540-000	075-38537-000
7	1	Heater, Cooler 180 Watt	ALL	025-27995-001	025-27995-001	025-27995-001
8	2	Connector, Water	ALL	375-39909-000	375-39909-000	375-38535-000
9	1	Well, Thermo	ALL	026-37512-000	026-37512-000	026-37512-000
10	2	Insulation (3/4" x 49" x 65")	ALL	010-05997-000	010-05997-000	010-05997-000
	2	Insulation (1 1/2" x 49" x 65")	ALL	010-05998-000	010-05998-000	010-05998-000
11	1	Sensor, Water Temp.	ALL	025-29964-000	025-29964-000	025-29964-000
12	1	Adhesive (Use with #6)	ALL	013-02293-000	013-02293-000	013-02293-000

EVAPORATOR COMPONENTS (CONT'D)

TABLE 2 (CONT'D) – EVAPORATOR COMPONENTS - 300 PSIG (SEE FIG. 1, PAGE 4)

ITEM NUMBER	QTY. PER UNIT	DESCRIPTION	DWP	UNIT MODEL YCAL0034	UNIT MODEL YCAL0040 AND 0044	UNIT MODEL YCAL0050 AND 0060
1	1	Cooler, less Heater & Insulation (Items 2 thru 6)	150	375-40906-000 (10" x 90")	375-40909-000 (12" x 104")	375-40909-000 (12" x 104")
2	2	Head, Conn. End	ALL	375-39920-000	375-37895-000	375-37895-000
3	1	Head, Back End	ALL	375-39914-000	075-37892-000	075-37892-000
4	1	Baffle, Pass, Conn. End	ALL	375-39919-000	075-37853-000	075-37853-000
5	1	Baffle, Pass, Back End	ALL	075-39917-000	375-37854-000	075-37854-000
6	4	Gasket, Pass Baffle and Head	ALL	075-39918-000	075-37856-000	075-37856-000
7	2	Heater, Cooler 280 Watt	ALL	025-27995-002	025-22691-000	025-22691-000
8	1	Connector, Water	ALL	375-40908-000	375-40911-000	375-40911-000
9	1	Bulb, Well	ALL	026-32328-000	026-32328-000	026-32328-000
10	2.5	Insulation (3/4" x 49" x 65")	ALL	010-05997-000	010-05997-000	010-05997-000
	2.5	Insulation (1 1/2" x 49" x 65")	ALL	010-05998-000	010-05998-000	010-05998-000
11	1	Sensor, Water Temp.	ALL	025-29964-000	025-29964-000	025-29964-000
12	1	Adhesive (Use with #6)	ALL	013-02293-000	013-02293-000	013-02293-000

TABLE 2 (CONT'D) – EVAPORATOR COMPONENTS - 300 PSIG (SEE FIG. 1, PAGE 4)

ITEM NUMBER	QTY. PER UNIT	DESCRIPTION	DWP	UNIT MODEL YCAL0064, 0070 AND 0074	UNIT MODEL YCAL0080
1	1	Cooler, less Heater & Insulation (Items 2 thru 6)	150	375-40917-000 (15" x 105")	375-40916-000 (15" x 105")
2	2	Head, Conn. End	ALL	375-38519-000	375-38114-000
3	1	Head, Back End	ALL	075-38518-000	075-38518-000
4	1	Baffle, Pass, Conn. End	ALL	375-38509-000	375-38105-000
5	1	Baffle, Pass, Back End	ALL	375-38514-000	375-38110-000
6	4	Gasket, Pass Baffle and Head	ALL	075-38517-000	075-38118-000
7	2	Heater, Cooler 420 Watt	ALL	025-22692-000	025-22692-000
8	1	Connector, Water	ALL	375-40922-000	375-40922-000
9	1	Bulb, Well	ALL	026-32328-000	026-32328-000
10	3	Insulation (3/4" x 49" x 65")	ALL	010-05997-000	010-05997-000
	3	Insulation (1 1/2" x 49" x 65")	ALL	010-05998-000	010-05998-000
11	1	Sensor, Water Temp.	ALL	025-29964-000	025-29964-000
12	1	Adhesive (Use with #6)	ALL	013-02293-000	013-02293-000

CONDENSER COIL COMPONENTS

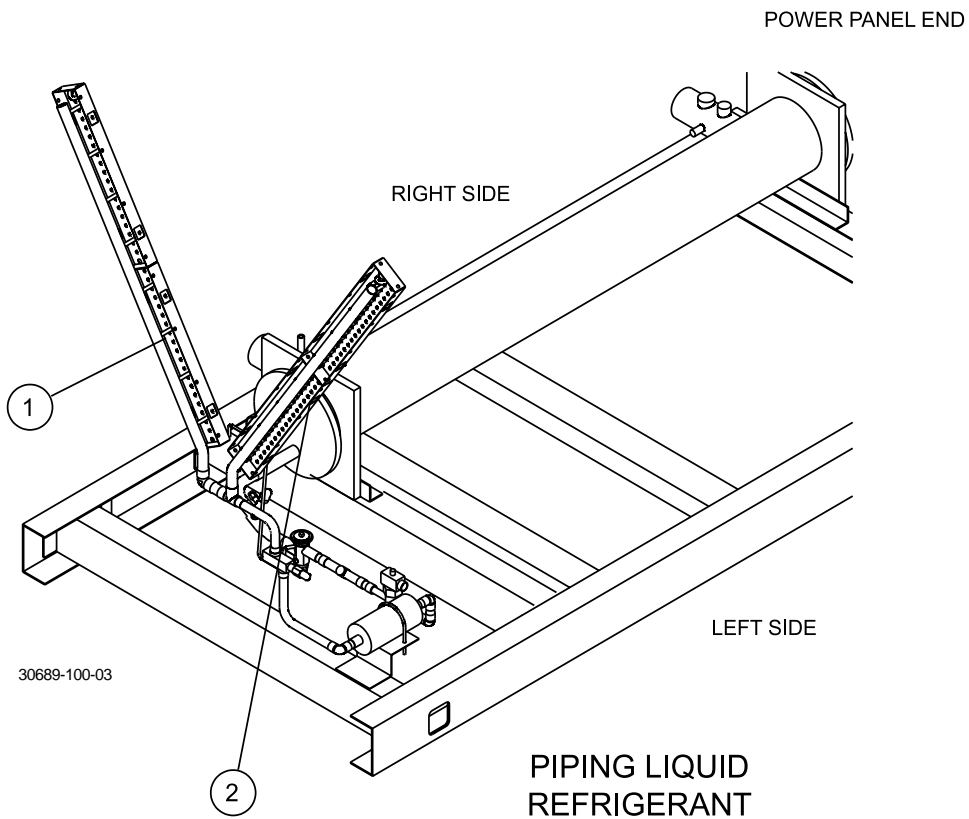
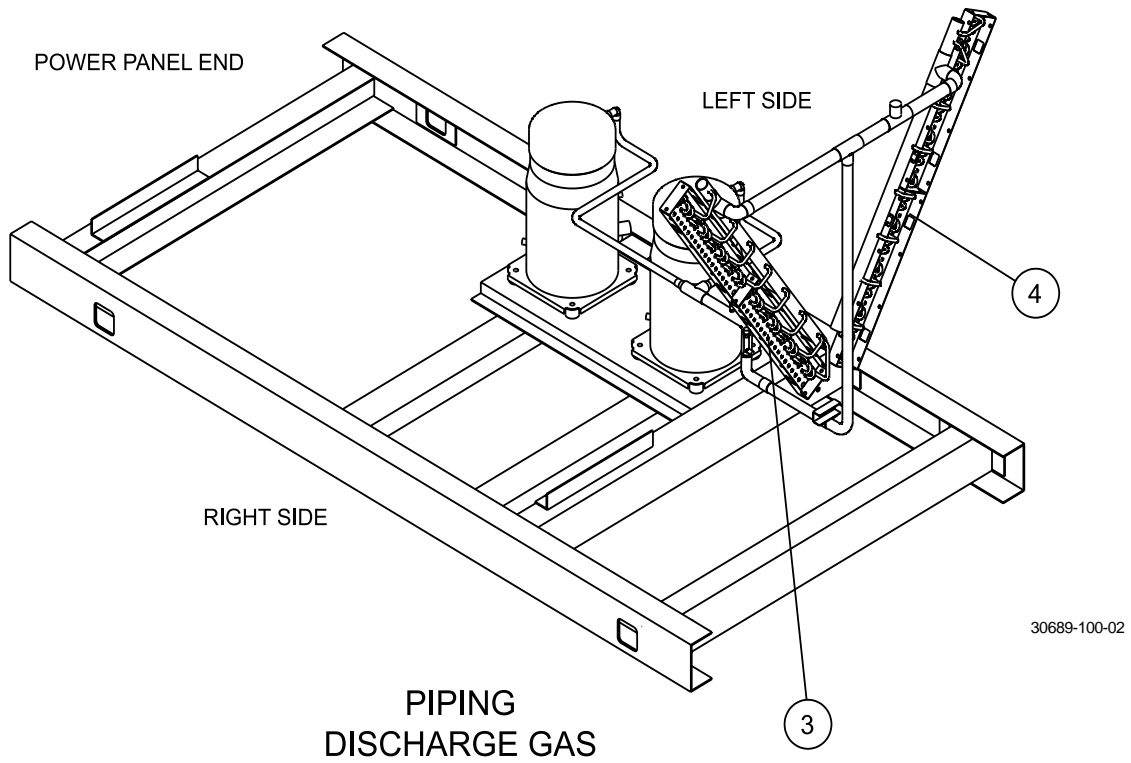


FIG. 2 – CONDENSER COIL LAYOUT (REF. TABLE 3, PAGE 9)

Headers for each circuit are denoted left and right as viewed from power panel end of chiller.

CONDENSER COIL COMPONENTS (CONT'D)

TABLE 3 – CONDENSER COILS – YCAL0014, 0020, 0024 AND YCAL0030 (SEE FIG. 2, PAGE 8)

ITEM NUMBER	DESCRIPTION	POSITION	QTY	YCAL0014 & YCAL0020	YCAL0024	YCAL0030
1	Header, Liquid	Right	2	375-31225-000	375-30685-000	375-25897-000
2	Header, Liquid	Left	2	375-31226-000	375-30686-000	375-25894-000
3	Header, Discharge	Right	2	375-31223-000	375-30683-000	375-30607-000
4	Header, Discharge	Left	2	375-31224-000	375-30684-000	375-30608-000
ALUNINUM FIN COILS						
5	Coils (Not Shown)	Both	4	375-30636-100	375-30675-100	375-30603-200
BLACK FIN COILS						
5	Coils (Not Shown)	Both	4	375-30957-100	375-30958-100	375-30959-200
PHENOLIC COILS						
5	Coils (Not Shown)	Both	4	375-30970-100	375-30971-100	375-30972-200
COPPER COILS						
5	Coils (Not Shown)	Both	4	375-30793-100	375-30974-100	375-30795-200

TABLE 3 – CONDENSER COILS – YCAL0034, 0040, 0044, 0050, 0060, AND YCAL0064 (SEE FIG. 2, PAGE 8)

ITEM NUMBER	DESCRIPTION	POSITION	QTY	YCAL0034	YCAL0040, 0044 & YCAL0050	YCAL0060
1	Header, Liquid	Right	2	375-25897-000	375-30626-000	375-30766-000
2	Header, Liquid	Left	2	375-25894-000	375-30627-000	375-30767-000
3	Header, Discharge	Right	2	375-30607-000	375-30619-000	375-30764-000
4	Header, Discharge	Left	2	375-30608-000	375-30620-000	375-30765-000
ALUNINUM FIN COILS						
5	Coils (Not Shown)	Both	8	375-30603-100(4)	375-30615-100	375-30751-100
BLACK FIN COILS						
5	Coils (Not Shown)	Both	8	375-30959-100(4)	375-30408-100	375-30944-100
PHENOLIC COILS						
5	Coils (Not Shown)	Both	8	375-30972-100(4)	375-30409-100	375-30945-100
COPPER COILS						
5	Coils (Not Shown)	Both	8	375-30795-100(4)	375-30410-100	375-30946-100

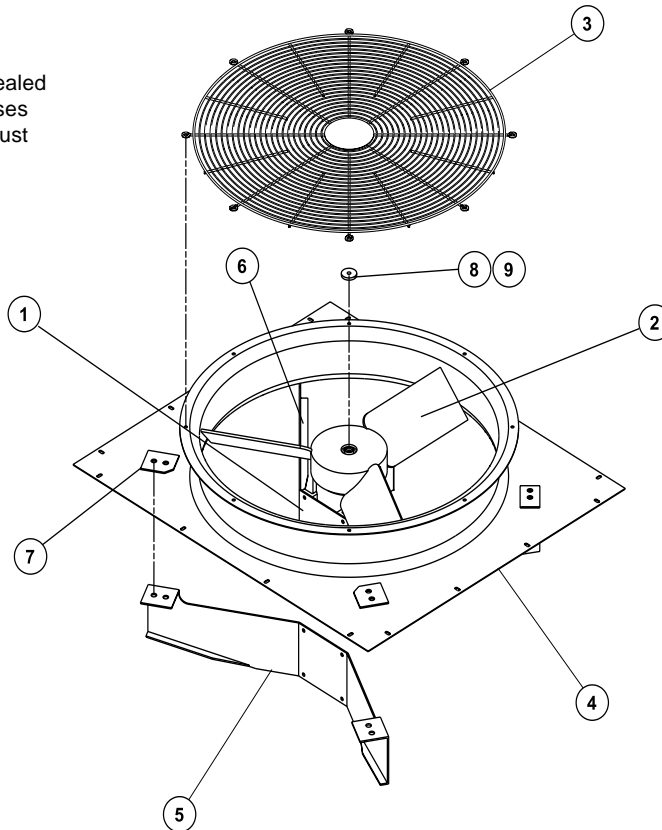
TABLE 3 – CONDENSER COILS – YCAL0070, 0074 AND YCAL0080 (SEE FIG. 2, PAGE 8)

ITEM NUMBER	DESCRIPTION	POSITION	QTY	YCAL0064	YCAL0070	YCAL0074	YCAL0080
1	Header, Liquid	Right	4	375-30669-000	375-30669-000	375-30447-000	375-30447-000
2	Header, Liquid	Left	4	375-30668-000	375-30668-000	375-30446-000	375-30446-000
3	Header, Discharge	Right	4	375-30663-000	375-30663-000	375-25897-000	375-25897-000
4	Header, Discharge	Left	4	375-30662-000	375-30662-000	375-25894-000	375-25894-000
ALUNINUM FIN COILS							
5	Coils (Not Shown)	Both	8	375-30778-100	375-30778-200	375-25892-200	375-25892-100
BLACK FIN COILS							
5	Coils (Not Shown)	Both	8	375-30947-100	375-30947-200	375-30956-200	375-30956-100
PHENOLIC COILS							
5	Coils (Not Shown)	Both	8	375-30948-100	375-30948-200	375-30954-200	375-30954-100
COPPER COILS							
5	Coils (Not Shown)	Both	8	375-30949-100	375-30949-200	375-30955-200	375-30955-100

FAN COMPONENTS

Service Note:

Fan Hub to Shaft Joint should be sealed with protective coating - factory uses RUST VETO 344 - a solvent type, rust preventative coating.



37970-01

FIG. 3 – FAN COMPONENTS

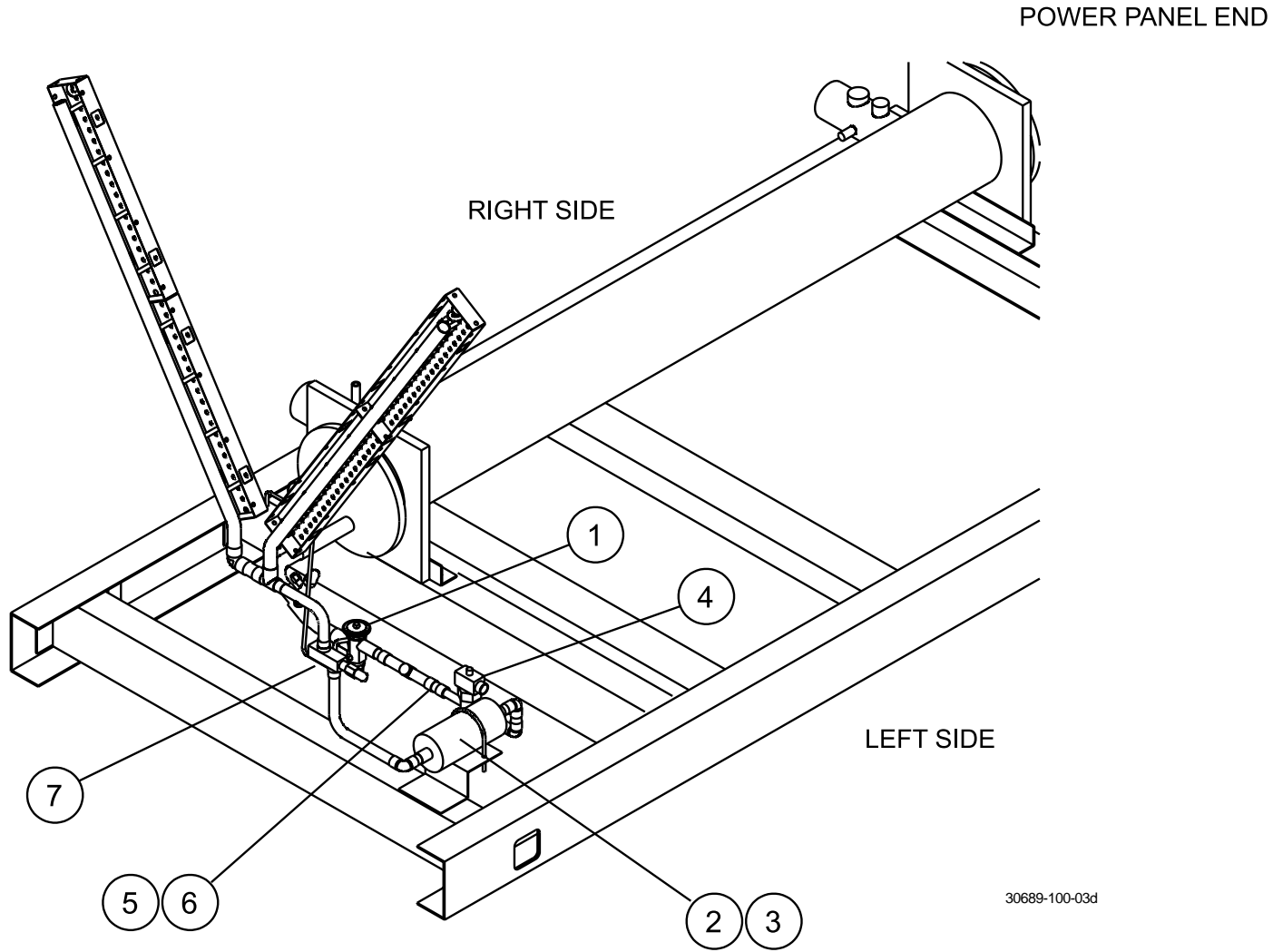
Service Note: Pin Location 52 in Model Number will be “X” for Standard Fan, or “L” for Low Noise Fan. See page 5.

TABLE 4 – FAN COMPONENTS

ITEM NUMBER	DESCRIPTION	VOLTAGE CODE	FAN TYPE	
			STANDARD 7/8" Ø SHAFT, 967 RPM	LOW NOISE (OPTIONAL) 7/8" Ø SHAFT, 704 RPM
1 ^S	Motor, Fan 2 HP (YCAL0014-YCAL0080)	-17	024-30900-002	024-30933-002
		-28	024-30900-002	024-30933-002
		-40	024-30900-004	024-30933-004
		-46	024-30900-001	024-30933-001
		-58	024-30900-003	024-30933-003
2 ^S	Blade, (YCAL0014-YCAL0060) Blade, (YCAL0064-YCAL0080)	ALL	026-35607-000	026-36579-000
		ALL	026-37577-000	026-37579-000
3	Guard, (YCAL0014-YCAL0060) Guard, (YCAL0064-YCAL0080)	ALL	026-37521-000	026-37521-000
		ALL	026-35605-000	026-35605-000
4	Orifice, (YCAL0014-YCAL0060) Orifice, (YCAL0064-YCAL0080)	ALL	026-37520-000	
		ALL	026-36141-000	
5	Support, Inner (YCAL0014-YCAL0060) Support, Inner (YCAL0064-YCAL0080)	ALL	075-25413-018	
		ALL	075-25584-000	
6	Support, Outer (YCAL0014-YCAL0060) Support, Outer (YCAL0064-YCAL0080)	ALL	075-25413-019	
		ALL	075-25583-000	
7	Plate, Reinf. (YCAL0014-YCAL0060) Plate, Reinf. (YCAL0064-YCAL0080)	ALL	075-25413-023	
		ALL	075-25413-024	
8	Screw, Cap M8x125 (Not Shown)	ALL	021-18494-000	
9	Spacer, Fan Motor	ALL	075-29007-000	

S = Recommended Spare Parts

This page intentionally left blank

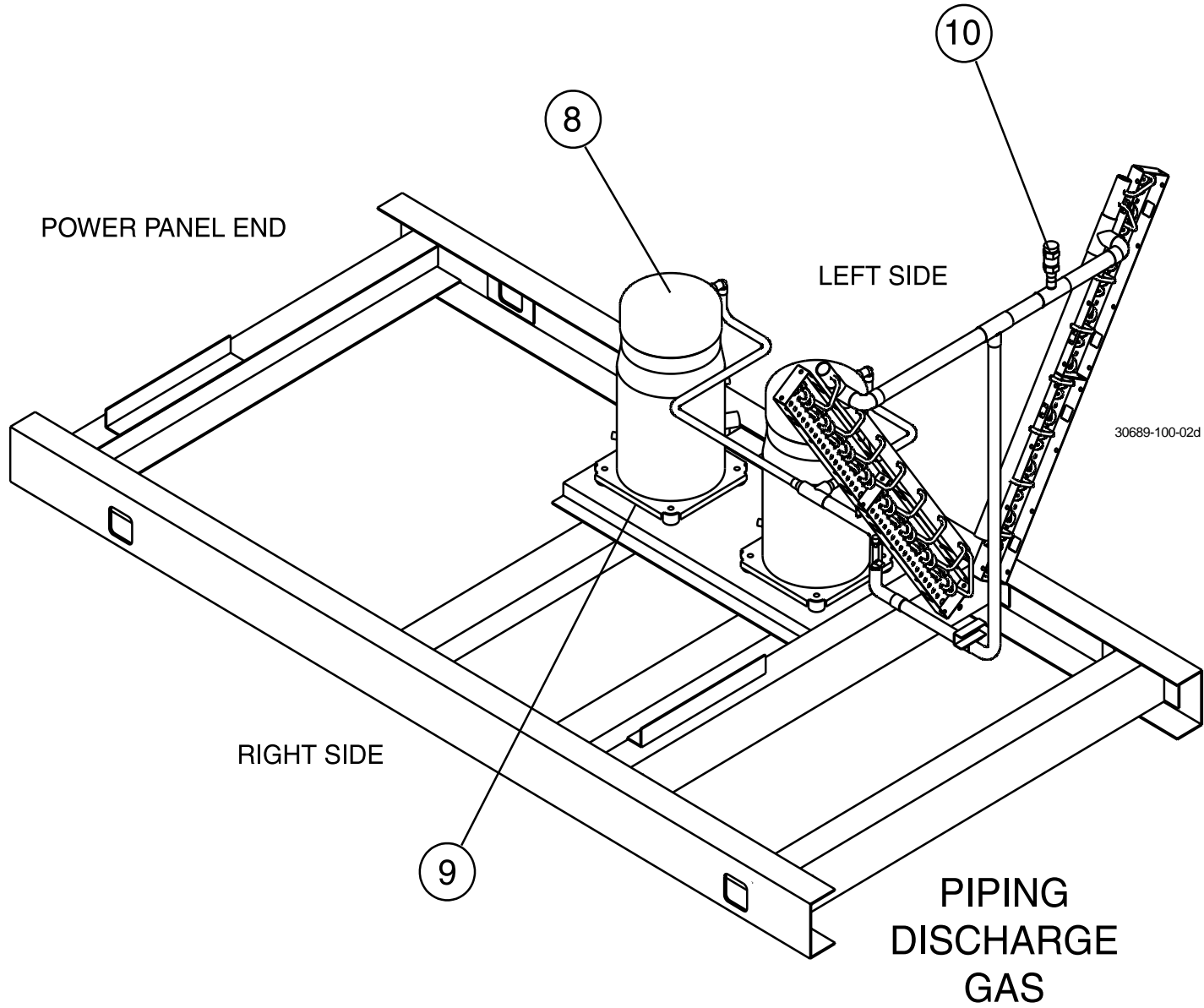


30689-100-03d

REFRIGERANT AND OIL PIPING COMPONENTS
CHILLER MODEL YCAL - STYLE A

PIPING LIQUID
REFRIGERANT

FIG. 4 – REFRIGERANT AND OIL PIPING COMPONENTS - MODELS YCAL0014, 0020, 0024 AND 0030 SHOWN (REF. TABLE 5, PAGES 14 AND 15)



REFRIGERANT AND OIL PIPING COMPONENTS (CONT'D)
CHILLER MODEL YCAL - STYLE A

FIG. 5 – REFRIGERANT AND OIL PIPING COMPONENTS - MODELS YCAL0014, 0020, 0024 AND 0030 SHOWN (REF. TABLE 5, PAGES 14 AND 15)

REFRIGERANT AND OIL PIPING COMPONENTS (CONT'D) CHILLER MODEL YCAL – STYLE A

TABLE 5 – REFRIGERANT PIPING AND OIL PIPING COMPONENTS
(SEE FIGS. 4 AND 5, PAGES 12 AND 13)

ITEM NO.	SYSTEM	DESCRIPTION	YCAL0014- YCAL0020	YCAL0024	YCAL0030	YCAL0034
1 ^s	1	Valve, Thermal Expansion	025-27535	025-27536	025-20213	025-20213
	2		N/A	N/A	N/A	N/A
2	Both	Drier, Sealed Type	026-35634	026-35634	026-36510	026-36510
3	N/A	N/A	N/A	N/A	N/A	N/A
4 ^s	1	Valve, Solenoid, Liq. Line*	025-34585	025-34585	025-34585	025-34585
	2		N/A	N/A	N/A	N/A
5	1	Moisture Indicator, Body	026-15305	026-15305	026-15305	026-15305
	2		N/A	N/A	N/A	N/A
6	Both	Moisture Indicator, Sight Glass, Cap Assembly	N/A	N/A	N/A	N/A
7	1	Valve, Liquid Stop	022-02992	022-02992	022-02992	022-02992
	2		N/A	N/A	N/A	N/A
8	Both	Compressor	See Pages 18 and 19 for Compressor Part Numbers			
9	Both	Isolator Kit, Compressor	5710029P03	5710029P03	5710029P03	5710029P03
10	Both	Valve, Relief 450PSIG	022-08863	022-08863	022-08863	022-08863
	Optional	Valve, Relief 300PSIG	022-01887	022-01887	022-01887	022-01887

^s Recommended Spare Part

* Order replacement coil 025-35151 for solenoid valve.

TABLE 5 (CONT'D) – REFRIGERANT PIPING AND OIL PIPING COMPONENTS
(SEE FIGS. 4 AND 5, PAGES 12 AND 13)

ITEM NO.	SYSTEM	DESCRIPTION	YCAL0040	YCAL0044	YCAL0050
1 ^s	1	Valve, Thermal Expansion	025-20213	025-20213	025-20213
	2		025-27535	025-27536	025-20213
2	Both	Drier, Sealed Type	026-20145	026-20145	026-20145
3	N/A	N/A	N/A	N/A	N/A
4 ^s	1	Valve, Solenoid, Liq. Line*	025-34585	025-34585	025-34585
	2		N/A	025-34585	025-34585
5	1	Moisture Indicator, Body	026-15305	026-15305	026-15305
	2		N/A	026-15305	026-15305
6	Both	Moisture Indicator, Sight Glass, Cap Assembly	N/A	N/A	N/A
7	1	Valve, Liquid Stop	022-02992	022-02992	022-02992
	2		N/A	022-02992	022-02992
8	Both	Compressor	See Pages 18 and 19 for Comp. Part Numbers		
9	Both	Isolator Kit, Compressor	5710029P03	5710029P03	5710029P03
10	Both	Valve, Relief 450PSIG	022-08863	022-08863	022-08863
	Optional	Valve, Relief 300PSIG	022-01887	022-01887	022-01887

^s Recommended Spare Part

* Order replacement coil 025-35151 for solenoid valve.

REFRIGERANT AND OIL PIPING COMPONENTS (CONT'D) CHILLER MODEL YCAL – STYLE A

TABLE 5 (CONT'D) – REFRIGERANT PIPING AND OIL PIPING COMPONENTS
(SEE FIGS. 4 AND 5, PAGES 12 AND 13)

ITEM NO.	SYSTEM	DESCRIPTION	YCAL0060	YCAL064 - YCAL0070	YCAL0074	YCAL0080
1 ^s	1	Valve, Thermal Expansion	025-20213	025-20213	025-32904	025-32904
	2		025-20213	025-20213	025-32904	025-32904
2	Both	Drier, Sealed Type	026-20145	026-20145	N/A	N/A
	Both	Dehydrator, Core Type	N/A	N/A	026-30598	026-30598
3 ^s	Both	Dehydrator Core	N/A	N/A	026-18328	026-18328
4 ^s	1	Valve, Solenoid, Liq. Line*	025-34585	025-34585	025-34585	025-34585
	2		025-34585	025-34585	025-34585	025-34585
5	1	Moisture Indicator, Body	026-15305	026-37544	026-37544	026-37544
	2		026-15305	026-37544	026-37544	026-37544
6	Both	Moisture Indicator, Sight Glass, Cap Assembly	N/A	026-37548	026-37548	026-37548
7	1	Valve, Liquid Stop	022-02992	025-10510	025-10510	025-10510
	2		022-02992	025-10510	025-10510	025-10510
8	Both	Compressor	See Pages 18 and 19 for Compressor Part Numbers			
9	Both	Isolator Kit, Compressor	5710029P03	5710029P03	5710029P03	5710029P03
10	Both	Valve, Relief 450PSIG	022-08863	022-08863	022-08863	022-08863
	Optional	Valve, Relief 300PSIG	022-01887	022-01887	022-01887	022-01887

^s Recommended Spare Part

* Order replacement solenoid coil 025-35151-000 for solenoid valve.

Service Note:

All models - Use female DIN plug (025-34047-000) for solenoid coil (025-35151-000).

TABLE 5A – HOT GAS BY-PASS SOLENOID VALVE (025-34133-000) COIL REPLACEMENT

MODEL NUMBERS	VENDOR	DESCRIPTION	PART NUMBER
ALL	SPORLAN	COIL ONLY, SOLENOID VALVE	025-35151-000
	ALCO		025-35152-000
	DANFOSS		025-35169-000

COMPRESSOR

YCAL0040, YCAL0044
YCAL0050 & YCAL0060

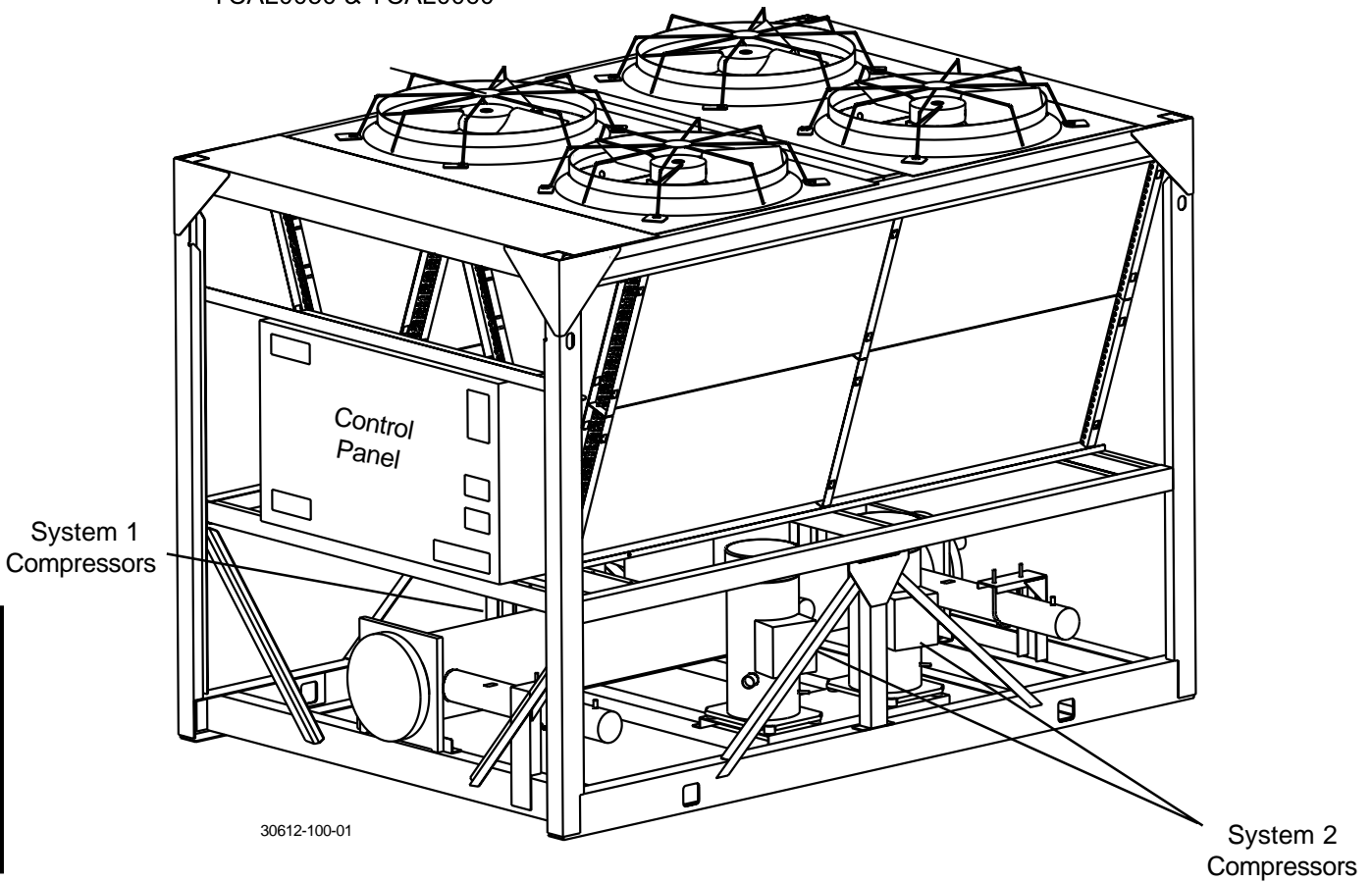


FIG. 6 – COMPRESSOR - TYPICAL LAYOUT (REF. TABLE 6, PAGE 18)

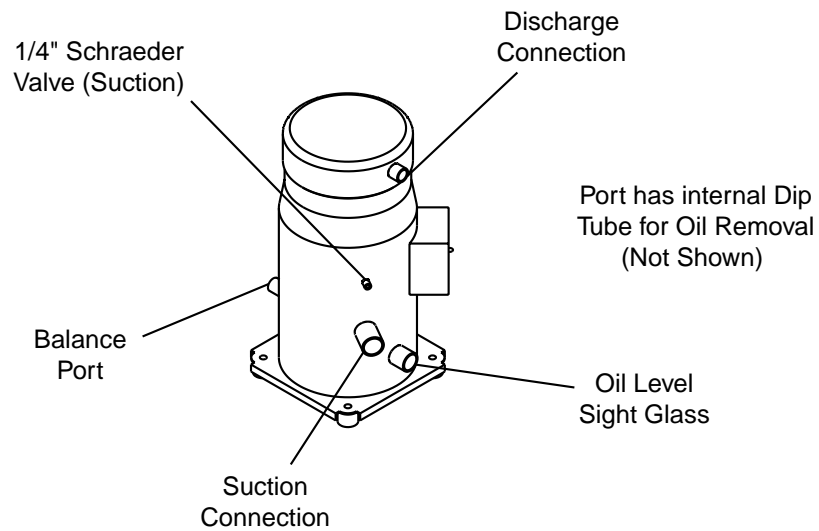


FIG. 7 – COMPRESSOR (REF. TABLE 6, PAGE 18)

COMPRESSOR (CONT'D)

TABLE 5B – HEATER KIT AND PART NUMBERS

MODEL	HEATER KIT	HEATER PART NUMBERS	QUANTITY
YCAL0014	575-45141-001	025-35139-000	2
YCAL0020	575-45141-001	025-35139-000	2
YCAL0024	575-45141-001	025-35139-000	2
YCAL0030	575-45141-002	025-35140-000	2
YCAL0034	575-45141-003	025-35139-000	3
YCAL0040	575-45141-004	025-35139-000	4
YCAL0044	575-45141-004	025-35139-000	4
YCAL0050	575-45141-005	025-35140-000 (SYS.1)	2
		025-35139-000 (SYS.2)	2
YCAL0060	575-45141-006	025-35140-000	4
YCAL0064	575-45141-007	025-35139-000	6
YCAL0070	575-45141-007	025-35139-000	6
YCAL0074	575-45141-008	025-35140-000 (SYS.1)	3
		025-35139-000 (SYS.2)	3
YCAL0080	575-45141-009	025-35140-000	6

TABLE 5C – REQUIRED TRANSFORMER (NOT INCLUDED IN HEATER KIT)

MODEL	CONTROL POWER TRANSFORMER	VOLTAGE CODE	PART NUMBER
ALL	1.0 KVA	-17	025-35683-000
	1.0 KVA	-28	025-35680-000
	1.0 KVA	-40	025-35683-000
	1.0 KVA	-46	025-35680-000
	1.0 KVA	-58	025-35681-000

Service Note:

Heater kit includes al wiring, conduit, clamps, etc. for entire unit. Heater kit does not include required 1.0 KVA transformer.

TABLE 5D – RECOMMENDED OIL TYPE

ITEM	REF.	DESCRIPTION	1 GALLON	5 GALLON
Oil ^s	R-22	OIL, TYPE 'F' (MINERAL)	—	011-00434-000

^s Recommended Spare Part

COMPRESSOR (CONT'D)

TABLE 6 – COMPRESSOR PART NUMBERS (SEE FIGS. 6 AND 7, PAGES 16)

MODEL	VOLTAGE CODE	QTY		SYSTEM #1 COMPRESSOR		SYSTEM #2 COMPRESSOR	
		SYS 1	SYS 2	PART #	MODEL #	PART #	MODEL #
YCAL0014	-17	2	N/A	026-36517-001	SM090	N/A	N/A
	-28	2	N/A	026-36517-001	SM090	N/A	N/A
	-40	2	N/A	026-36517-002	SM090	N/A	N/A
	-46	2	N/A	026-36517-004	SM090	N/A	N/A
	-58	2	N/A	026-36517-005	SM090	N/A	N/A
YCAL0020	-17	2	N/A	026-36518-001	SM120	N/A	N/A
	-28	2	N/A	026-36518-001	SM120	N/A	N/A
	-40	2	N/A	026-36518-002	SM120	N/A	N/A
	-46	2	N/A	026-36518-004	SM120	N/A	N/A
	-58	2	N/A	026-36518-005	SM120	N/A	N/A
YCAL0024	-17	2	N/A	026-36500-001	SM160	N/A	N/A
	-28	2	N/A	026-36500-001	SM160	N/A	N/A
	-40	2	N/A	026-36500-004	SM160	N/A	N/A
	-46	2	N/A	026-36500-002	SM160	N/A	N/A
	-58	2	N/A	026-36500-005	SM160	N/A	N/A
YCAL0030	-17	2	N/A	026-36162-001	SM185	N/A	N/A
	-28	2	N/A	026-36162-001	SM185	N/A	N/A
	-40	2	N/A	026-36162-004	SM185	N/A	N/A
	-46	2	N/A	026-36162-002	SM185	N/A	N/A
	-58	2	N/A	026-36162-005	SM185	N/A	N/A
YCAL0034	-17	3	N/A	026-36500-001	SM160	N/A	N/A
	-28	3	N/A	026-36500-001	SM160	N/A	N/A
	-40	3	N/A	026-36500-004	SM160	N/A	N/A
	-46	3	N/A	026-36500-002	SM160	N/A	N/A
	-58	3	N/A	026-36500-005	SM160	N/A	N/A
YCAL0040	-17	2	2	026-36514-001	SM125	026-36514-001	SM125
	-28	2	2	026-36514-001	SM125	026-36514-001	SM125
	-40	2	2	026-36514-005	SM125	026-36514-005	SM125
	-46	2	2	026-36514-002	SM125	026-36514-002	SM125
	-58	2	2	026-36514-004	SM125	026-36514-004	SM125
YCAL0044	-17	2	2	026-36500-001	SM160	026-36500-001	SM160
	-28	2	2	026-36500-001	SM160	026-36500-001	SM160
	-40	2	2	026-36500-004	SM160	026-36500-004	SM160
	-46	2	2	026-36500-002	SM160	026-36500-002	SM160
	-58	2	2	026-36500-005	SM160	026-36500-005	SM160
YCAL0050	-17	2	2	026-36162-001	SM185	026-36500-001	SM160
	-28	2	2	026-36162-001	SM185	026-36500-001	SM160
	-40	2	2	026-36162-004	SM185	026-36500-004	SM160
	-46	2	2	026-36162-002	SM185	026-36500-002	SM160
	-58	2	2	026-36162-005	SM185	026-36500-005	SM160
YCAL0060	-17	2	2	026-36162-001	SM185	026-36162-001	SM185
	-28	2	2	026-36162-001	SM185	026-36162-001	SM185
	-40	2	2	026-36162-004	SM185	026-36162-004	SM185
	-46	2	2	026-36162-002	SM185	026-36162-002	SM185
	-58	2	2	026-36162-005	SM185	026-36162-005	SM185

Compressor

COMPRESSOR (CONT'D)

TABLE 6 – COMPRESSOR PART NUMBERS (SEE FIGS. 6 AND 7, PAGES 16)

MODEL	VOLTAGE CODE	QTY		SYSTEM #1 COMPRESSOR		SYSTEM #2 COMPRESSOR	
		SYS 1	SYS 2	PART #	MODEL #	PART #	MODEL #
YCAL0064	-17	3	3	026-36500-001	SM160	026-36514-001	SM125
	-28	3	3	026-36500-001	SM160	026-36514-001	SM125
	-40	3	3	026-36500-004	SM160	026-36514-005	SM125
	-46	3	3	026-36500-002	SM160	026-36514-002	SM125
	-58	3	3	026-36500-005	SM160	026-36514-004	SM125
YCAL0070	-17	3	3	026-36500-001	SM160	026-36500-001	SM160
	-28	3	3	026-36500-001	SM160	026-36500-001	SM160
	-40	3	3	026-36500-004	SM160	026-36500-004	SM160
	-46	3	3	026-36500-002	SM160	026-36500-002	SM160
	-58	3	3	026-36500-005	SM160	026-36500-005	SM160
YCAL0074	-17	3	3	026-36162-001	SM185	026-36500-001	SM160
	-28	3	3	026-36162-001	SM185	026-36500-001	SM160
	-40	3	3	026-36162-004	SM185	026-36500-004	SM160
	-46	3	3	026-36162-002	SM185	026-36500-002	SM160
	-58	3	3	026-36162-005	SM185	026-36500-005	SM160
YCAL0080	-17	3	3	026-36162-001	SM185	026-36162-001	SM185
	-28	3	3	026-36162-001	SM185	026-36162-001	SM185
	-40	3	3	026-36162-004	SM185	026-36162-004	SM185
	-46	3	3	026-36162-002	SM185	026-36162-002	SM185
	-58	3	3	026-36162-005	SM185	026-36162-005	SM185

Compressor

CONTROL PANEL AND POWER PANEL

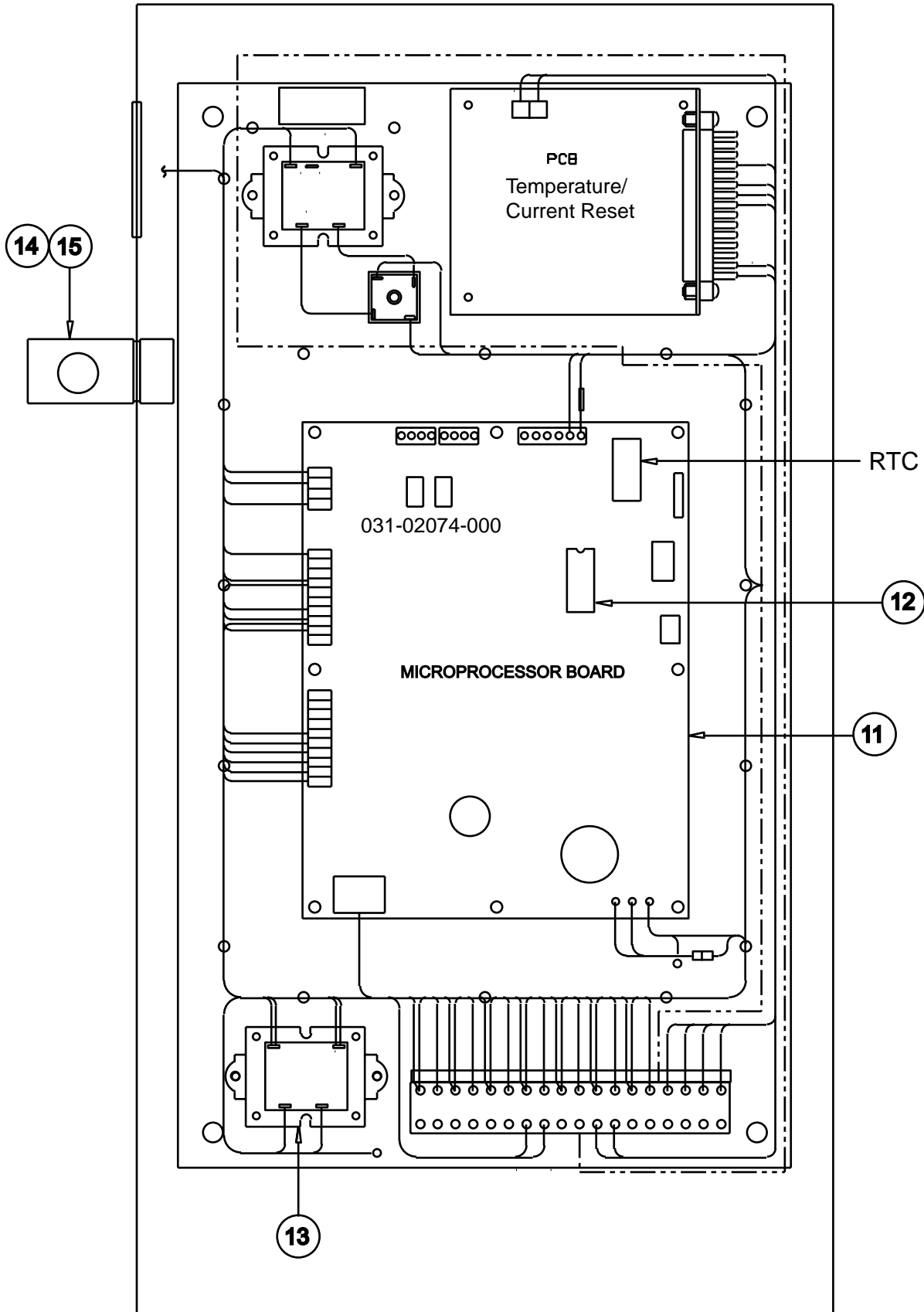
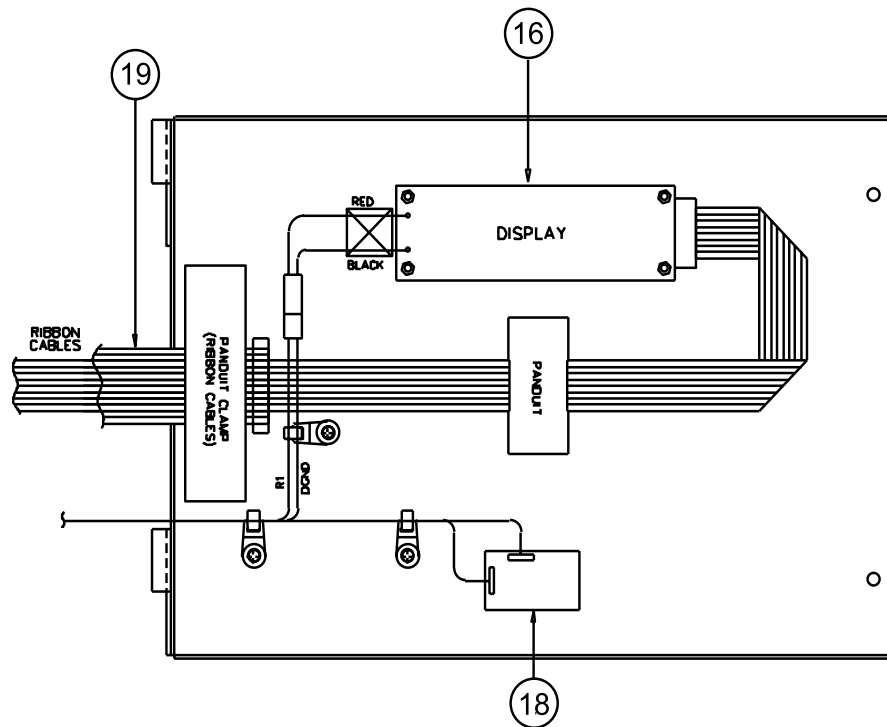


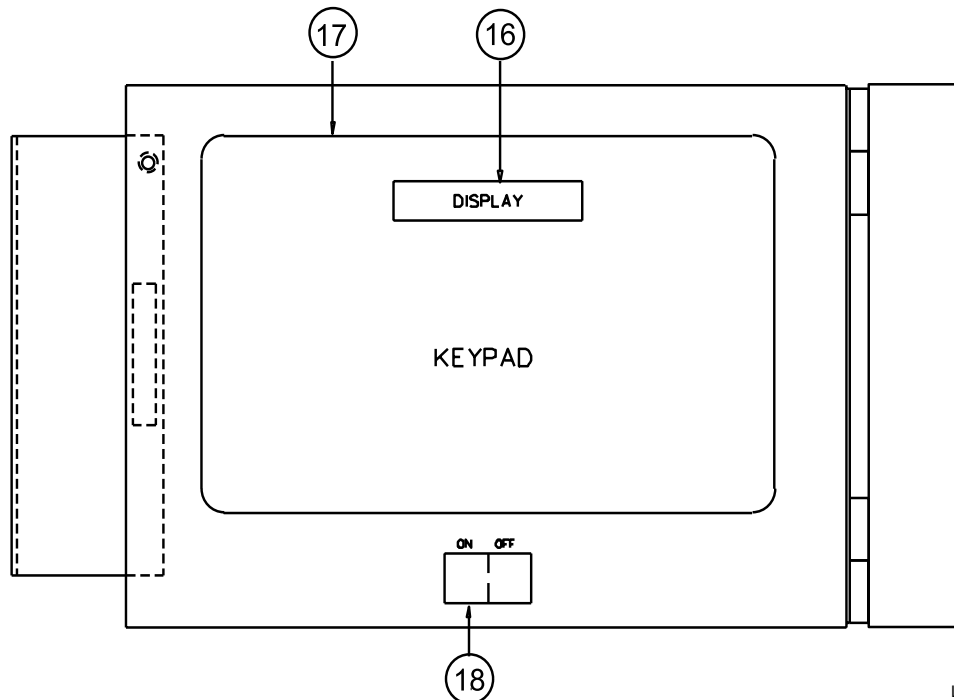
FIG. 8 – CONTROL PANEL COMPONENTS (REF. TABLE 7A, PAGES 27-46)

LD05166

CONTROL PANEL AND POWER PANEL (CONT'D)



DISPLAY DOOR REAR VIEW

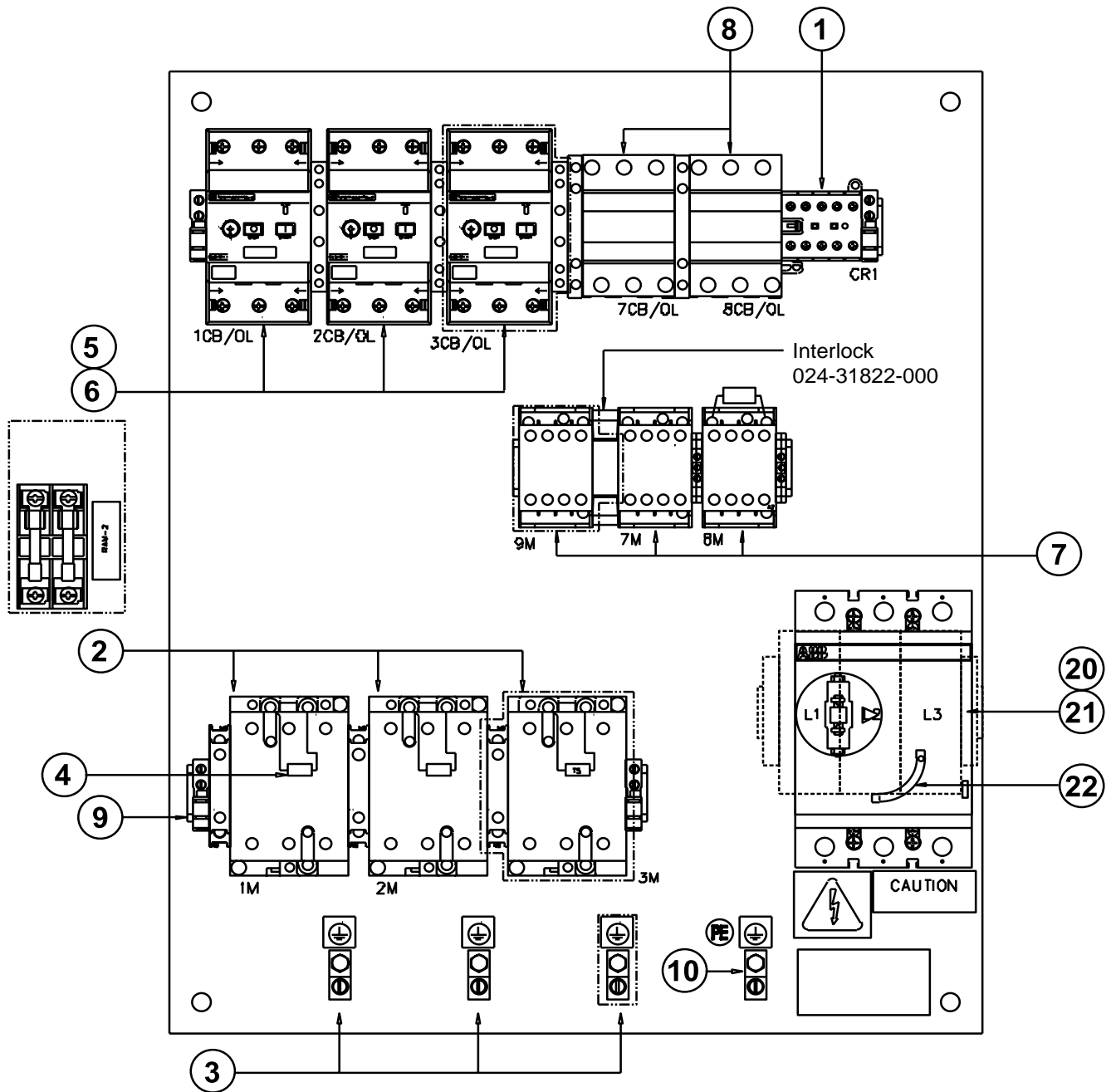


DISPLAY DOOR FRONT VIEW

LD05167

FIG. 9 – CONTROL PANEL COMPONENTS (REF. TABLE 7A, PAGES 27-46)

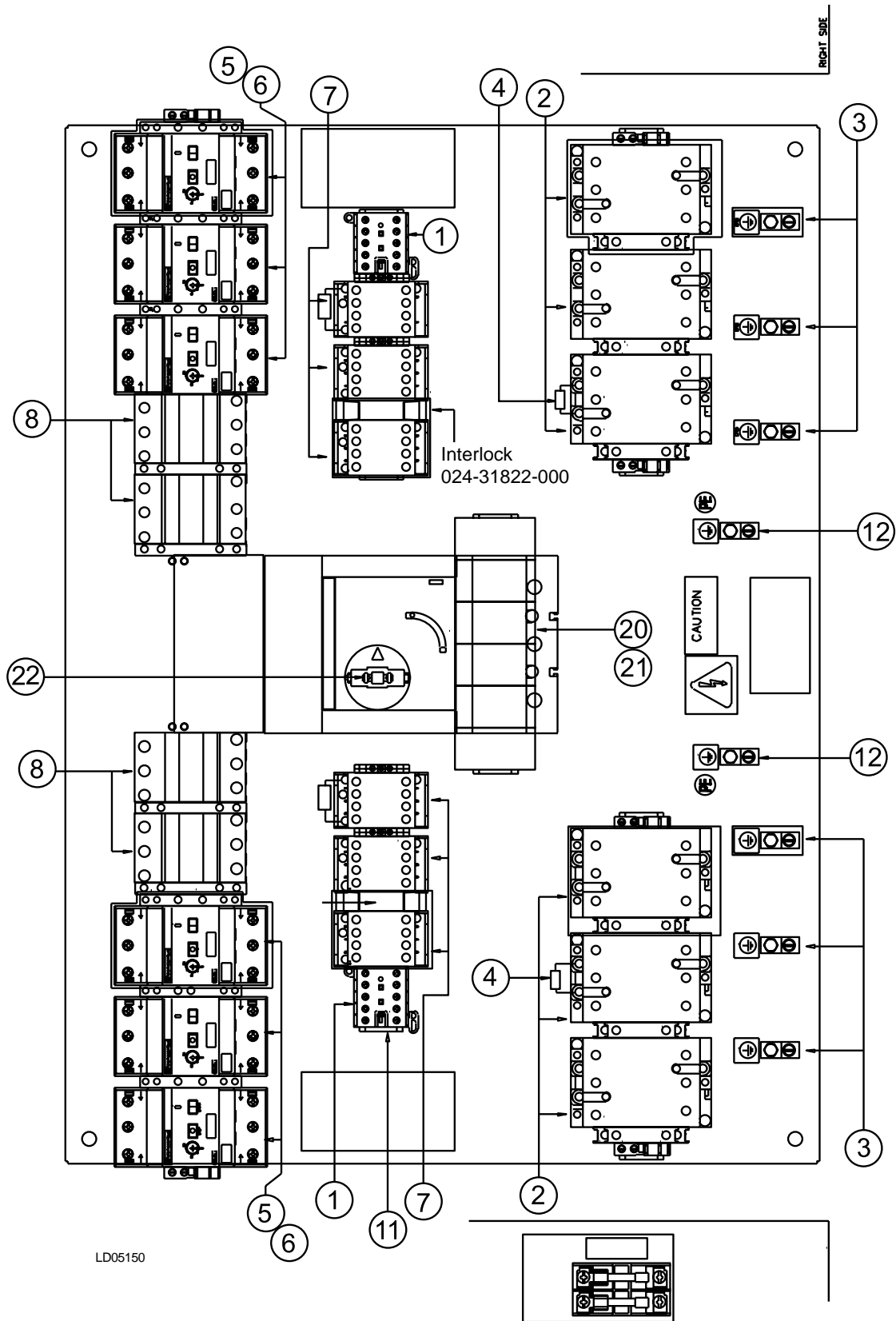
CONTROL PANEL AND POWER PANEL (CONT'D)



LD05161

FIG. 10 – POWER PANEL COMPONENTS - YCAL0014-YCAL0034 (REF. TABLE 7A, PAGES 27-46)

CONTROL PANEL AND POWER PANEL (CONT'D)



Control & Power Panel

FIG. 11 – POWER PANEL COMPONENTS - YCAL0040-YCAL0060 (REF. TABLE 7A, PAGES 27-46)

CONTROL PANEL AND POWER PANEL (CONT'D)

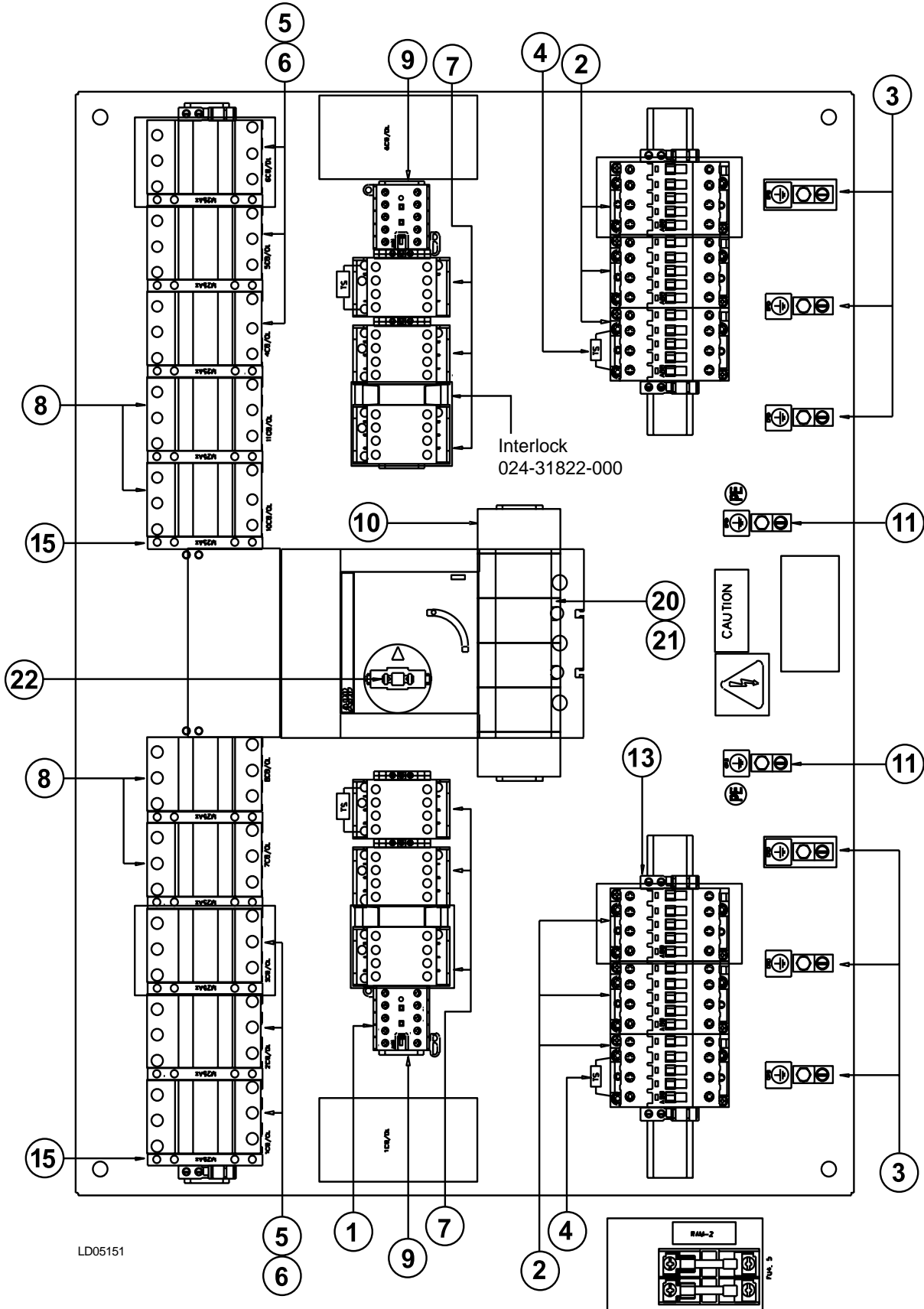


FIG. 12 – POWER PANEL COMPONENTS - YCAL0064-YCAL0080 (REF. TABLE 7A, PAGES 27-46)

CONTROL PANEL AND POWER PANEL (CONT'D)

TABLE 7 – CONTROL AND POWER PANEL IDENTIFIERS (TO IDENTIFY REPLACEMENT PART NUMBERS, SELECT PANEL IDENTIFIER NUMBER BELOW, THEN REFER TO THE HIGHLIGHTED ROW ON THE 'CONTROL AND POWER PANEL COMPONENTS' TABLE 7, PAGES 27-46 AND SEE FIGS. 8-12, PAGES 20-24)

MODEL	VOLTAGE CODE	POWER PANEL WITH TERMINAL BLOCK	POWER PANEL WITH SEPARATE SYSTEM CIRCUIT BREAKERS	POWER PANEL WITH SEPARATE SYSTEM NF DISCONNECT SWITCHES
		PANEL NUMBER	PANEL NUMBER	PANEL NUMBER
YCAL0014	-17	371-02753-101	371-02753-201	371-02753-201
	-28	-101	-202	-201
	-40	-103	-203	-303
	-46	-104	-204	-304
	-58	-106	-206	-306
YCAL0020	-17	371-02753-108	371-02753-208	371-02753-308
	-28	-108	-208	-309
	-40	-110	-210	-210
	-46	-111	-210	-210
	-58	-113	-213	-313
YCAL0024	-17	371-02753-115	371-02753-215	371-02753-315
	-28	-115	-215	-315
	-40	-117	-217	-217
	-46	-118	-218	-318
	-58	-120	-220	-220
YCAL0030	-17	371-02753-122	371-02753-222	371-02753-322
	-28	-115	-215	-315
	-40	-117	-217	-217
	-46	-118	-225	-325
	-58	-127	-220	-220
YCAL0034	-17	371-02753-129	371-02753-229	371-02753-329
	-28	-129	-230	-329
	-40	-131	-231	-231
	-46	-132	-232	-232
	-58	-134	-234	-334
YCAL0040	-17	371-02752-101	371-02752-201	371-02752-301
	-28	-102	-202	-301
	-40	-103	-203	-303
	-46	-104	-204	-304
	-58	-106	-206	-306
YCAL0044	-17	371-02752-108	371-02752-208	371-02752-308
	-28	-108	-209	-309
	-40	-110	-210	-310
	-46	-111	-211	-311
	-58	-127	-227	-227
YCAL0050	-17	371-02752-115	371-02752-215	371-02752-315
	-28	-115	-215	-315
	-40	-117	-217	-317
	-46	-118	-218	-318
	-58	-120	-220	-320
YCAL0060	-17	371-02752-122	371-02752-222	371-02752-322
	-28	-108	-208	-308
	-40	-110	-224	-310
	-46	-111	-211	-311
	-58	-127	-227	-327

CONTROL PANEL AND POWER PANEL (CONT'D)

TABLE 7 – CONTROL AND POWER PANEL IDENTIFIERS (TO IDENTIFY REPLACEMENT PART NUMBERS, SELECT PANEL IDENTIFIER NUMBER BELOW, THEN REFER TO THE HIGHLIGHTED ROW ON THE 'CONTROL AND POWER PANEL COMPONENTS' TABLE 7, PAGES 27-46 AND SEE FIGS. 8-12, PAGES 20-24)

MODEL	VOLTAGE CODE	POWER PANEL WITH TERMINAL BLOCK	POWER PANEL WITH SEPARATE SYSTEM CIRCUIT BREAKERS	POWER PANEL WITH SEPARATE SYSTEM NF DISCONNECT SWITCHES
		PANEL NUMBER	PANEL NUMBER	PANEL NUMBER
YCAL0064	-17	371-02751-101	371-02751-201	371-02751-301
	-28	-101	-201	-301
	-40	-103	-203	-303
	-46	-104	-204	-304
	-58	-106	-206	-306
YCAL0070	-17	371-02751-108	371-02751-208	371-02751-308
	-28	-109	-208	-308
	-40	-110	-210	-310
	-46	-111	-211	-311
	-58	-113	-213	-313
YCAL0074	-17	371-02751-115	371-02751-215	371-02751-315
	-28	-115	-215	-316
	-40	-117	-217	-317
	-46	-103	-218	-303
	-58	-120	-220	-320
YCAL0080	-17	371-02751-122	371-02751-222	371-02751-322
	-28	-122	-223	-322
	-40	-124	-224	-324
	-46	-110	-225	-310
	-58	-127	-227	-327

TABLE 7A – CONTROL PANEL AND POWER PANEL COMPONENTS (SEE FIGS. 8-12, PAGES 20-24)

Item NO.	qty	Description	371-02573 -101	371-02573 -103	371-02573 -104	371-02573 -106	371-02573 -108	371-02573 -110	371-02573 -111
1	1	Contactora 600V (CR 1 & 2)	024-31635-000	024-31635-000	024-31635-000	024-31635-000	024-31635-000	024-31635-000	024-31635-000
2	2	Compressor Contactora	024-31813-000	024-31817-000	024-31830-000	024-31830-000	024-31636-000	024-31817-000	024-31817-000
3	2	Ground Lug, Cu	025-34455-000	025-34455-000	025-34455-000	025-34455-000	025-34455-000	025-34455-000	025-34455-000
4	4	Surge Suppressor	031-00808-000	031-00808-000	031-00808-000	031-00808-000	031-00808-000	031-00808-000	031-00808-000
5	2	Compressor Starter	N/A	N/A	N/A	N/A	N/A	N/A	N/A
6	2	Auxilliary Contactora	N/A	N/A	N/A	N/A	N/A	N/A	N/A
7S	2	Fan Contactora	025-34445-000	025-34448-000	025-34448-000	025-34448-000	025-34445-000	025-34448-000	025-34448-000
8S	2	Fan Motor Starter	025-34446-000	025-34449-000	025-34449-000	025-34450-000	025-34446-000	025-34449-000	025-34449-000
9	2	Din Rail Slotted	025-29167-000	025-29167-000	025-29167-000	025-29167-000	025-29167-000	025-29167-000	025-29167-000
10	1	Ground Lug, Cu	025-34088-000	025-34088-000	025-34088-000	025-34088-000	025-34088-000	025-34088-000	025-34088-000
11S	1	Micro Board	031-02050-001	031-02050-001	031-02050-001	031-02050-001	031-02050-001	031-02050-001	031-02050-001
12S	1	Firmware EPROM	031-02049-001	031-02049-001	031-02049-001	031-02049-001	031-02049-001	031-02049-001	031-02049-001
13	1	Transformer 115/24V	025-30889-000	025-30889-000	025-30889-000	025-30889-000	025-30889-000	025-30889-000	025-30889-000
14	1	Fuse	025-34483-000	025-34483-000	025-34483-000	025-34483-000	025-34483-000	025-34483-000	025-34483-000
15	1	Fuseholder (Not Shown)	025-34484-000	025-34484-000	025-34484-000	025-34484-000	025-34484-000	025-34484-000	025-34484-000
16	1	Display	031-01110-000	031-01110-000	031-01110-000	031-01110-000	031-01110-000	031-01110-000	031-01110-000
17	1	Keypad	024-27838-000	024-27838-000	024-27838-000	024-27838-000	024-27838-000	024-27838-000	024-27838-000
18	1	Switch, On/Off	024-25517-000	024-25517-000	024-25517-000	024-25517-000	024-25517-000	024-25517-000	024-25517-000
19	1	Ribbon Cable	031-01109-211	031-01109-211	031-01109-211	031-01109-211	031-01109-211	031-01109-211	031-01109-211
20	2	Terminal Block	025-34447-000	025-34447-000	025-34447-000	025-34447-000	025-34447-000	025-34447-000	025-34447-000
21	3	Terminal Block	025-34485-000	025-35644-000	025-35644-000	025-35644-000	025-34482-000	025-34485-000	025-35644-000
	1	Circuit Breaker	N/A	N/A	N/A	N/A	N/A	N/A	N/A
	1	NF Disconnect Switch	N/A	N/A	N/A	N/A	N/A	N/A	N/A
22	1	Operator Mechanism	N/A	N/A	N/A	N/A	N/A	N/A	
23	1	Lug Kit (Not Shown)	N/A	N/A	N/A	N/A	N/A	N/A	

S Recommended Spare Part

CONTROL PANEL AND POWER PANEL (CONT'D)

TABLE 7A (CONT'D) – CONTROL PANEL AND POWER PANEL COMPONENTS (SEE FIGS. 8-12, PAGES 20-24)

Item NO.	qty	Description	371-02573 -113	371-02573 -115	371-02573 -117	371-02573 -118	371-02573 -120	371-02573 -122	371-02573 -127
1	1	Contactora 600V (CR 1 & 2)	024-31635-000	024-31635-000	024-31635-000	024-31635-000	024-31635-000	024-31635-000	024-31635-000
2	2	Compressor Contactora	024-31830-000	024-31602-000	024-31813-000	024-31818-000	024-31817-000	024-31640-000	024-31817-000
3	2	Ground Lug, Cu	025-34455-000	025-34455-000	025-34455-000	025-34455-000	025-34455-000	025-34455-000	025-34455-000
4	4	Surge Suppressor	031-00808-000	031-00808-000	031-00808-000	031-00808-000	031-00808-000	031-00808-000	031-00808-000
5	2	Compressor Starter	N/A	025-34488-000	024-31816-000	025-34489-000	025-34486-000	025-34488-000	025-34486-000
6	2	Auxilliary Contactora	N/A	024-31814-000	024-31814-000	N/A	N/A	024-31814-000	N/A
7S	2	Fan Contactora	025-34448-000	025-34445-000	025-34448-000	025-34448-000	025-34448-000	025-34445-000	025-34448-000
8S	2	Fan Motor Starter	025-34450-000	025-34446-000	025-34449-000	025-34449-000	025-34450-000	025-34446-000	025-34450-000
9	2	Din Rail Slotted	025-29167-000	025-29167-000	025-29167-000	025-29167-000	025-29167-000	025-29167-000	025-29167-000
10	1	Ground Lug, Cu	025-34088-000	025-34089-000	025-34089-000	025-34088-000	025-34088-000	025-34089-000	025-34088-000
11S	1	Micro Board	031-02050-001	031-02050-001	031-02050-001	031-02050-001	031-02050-001	031-02050-001	031-02050-001
12S	1	Firmware EPROM	031-02049-001	031-02049-001	031-02049-001	031-02049-001	031-02049-001	031-02049-001	031-02049-001
13	1	Transformer 115/24V	025-30889-000	025-30889-000	025-30889-000	025-30889-000	025-30889-000	025-30889-000	025-30889-000
14	1	Fuse	025-34483-000	025-34483-000	025-34483-000	025-34483-000	025-34483-000	025-34483-000	025-34483-000
15	1	Fuseholder (Not Shown)	025-34484-000	025-34484-000	025-34484-000	025-34484-000	025-34484-000	025-34484-000	025-34484-000
16	1	Display	031-01110-000	031-01110-000	031-01110-000	031-01110-000	031-01110-000	031-01110-000	031-01110-000
17	1	Keypad	024-27838-000	024-27838-000	024-27838-000	024-27838-000	024-27838-000	024-27838-000	024-27838-000
18	1	Switch, On/Off	024-25517-000	024-25517-000	024-25517-000	024-25517-000	024-25517-000	024-25517-000	024-25517-000
19	1	Ribbon Cable	031-01109-211	031-01109-211	031-01109-211	031-01109-211	031-01109-211	031-01109-211	031-01109-211
20	2	Terminal Block	025-34447-000	025-34447-000	025-34447-000	025-34447-000	025-34447-000	025-34447-000	025-34447-000
21	3	Terminal Block	025-35644-000	025-34454-000	025-34485-000	025-34485-000	025-35644-000	025-34454-000	025-34485-000
	1	Circuit Breaker	N/A	N/A	N/A	N/A	N/A	N/A	N/A
	1	NF Disconnect Switch	N/A	N/A	N/A	N/A	N/A	N/A	N/A
22	1	Handle, CB or NF Disc. Sw.	N/A	N/A	N/A	N/A	N/A	N/A	N/A
23	1	Lug Kit (Not Shown)	N/A	N/A	N/A	N/A	N/A	N/A	N/A

CONTROL PANEL AND POWER PANEL (CONT'D)

S Recommended Spare Part

TABLE 7A (CONT'D) – CONTROL PANEL AND POWER PANEL COMPONENTS (SEE FIGS. 8-12, PAGES 20-24)

Item NO.	qty	Description	371-02573 -129	371-02573 -131	371-02573 -132	371-02573 -134	371-02573 -201	371-02573 -202	371-02573 -203
1	1	Contactora 600V (CR 1 & 2)	024-31635-000	024-31635-000	024-31635-000	024-31635-000	024-31635-000	024-31635-000	024-31635-000
2	2	Compressor Contactora	024-31602-000	024-31813-000*	024-31818-000*	024-31817-000*	024-31813-000	024-31813-000	024-31817-000
3	2	Ground Lug, Cu	025-34455-000	025-34455-000	025-34455-000	025-34455-000	025-34455-000	025-34455-000	025-34455-000
4	4	Surge Suppressor	031-00808-000	031-00808-000	031-00808-000	031-00808-000	031-00808-000	031-00808-000	031-00808-000
5	2	Compressor Starter	025-34488-000	024-31816-000	025-34489-000	025-34486-000	N/A	N/A	025-34489-000
6	2	Auxilliary Contactora	024-31814-000	024-31814-000	N/A	N/A	N/A	N/A	N/A
7S	2	Fan Contactora	025-34445-000	025-34448-000	025-34448-000	025-34448-000	025-34445-000	025-34445-000	025-34448-000
8S	2	Fan Motor Starter	025-34446-000	025-34449-000	025-34449-000	025-34450-000	025-34446-000	025-34446-000	025-34449-000
9	2	Din Rail Slotted	025-29167-000	025-29167-000	025-29167-000	025-29167-000	025-29167-000	025-29167-000	025-29167-000
10	1	Ground Lug, Cu	025-34085-000	025-34088-000	025-34088-000	025-34088-000	025-34088-000	025-34088-000	025-34455-000
11S	1	Micro Board	031-02050-001	031-02050-001	031-02050-001	031-02050-001	031-02050-001	031-02050-001	031-02050-001
12S	1	Firmware EPROM	031-02049-001	031-02049-001	031-02049-001	031-02049-001	031-02049-001	031-02049-001	031-02049-001
13	1	Transformer 115/24V	025-30889-000	025-30889-000	025-30889-000	025-30889-000	025-30889-000	025-30889-000	025-30889-000
14	1	Fuse	025-34483-000	025-34483-000	025-34483-000	025-34483-000	025-34483-000	025-34483-000	025-34483-000
15	1	Fuseholder (Not Shown)	025-34484-000	025-34484-000	025-34484-000	025-34484-000	025-34484-000	025-34484-000	025-34484-000
16	1	Display	031-01110-000	031-01110-000	031-01110-000	031-01110-000	031-01110-000	031-01110-000	031-01110-000
17	1	Keypad	024-27838-000	024-27838-000	024-27838-000	024-27838-000	024-27838-000	024-27838-000	024-27838-000
18	1	Switch, On/Off	024-25517-000	024-25517-000	024-25517-000	024-25517-000	024-25517-000	024-25517-000	024-25517-000
19	1	Ribbon Cable	031-01109-211	031-01109-211	031-01109-211	031-01109-211	031-01109-211	031-01109-211	031-01109-211
20	2	Terminal Block	025-34447-000	025-34447-000	025-34447-000	025-34447-000	025-34447-000	025-34447-000	025-34447-000
21	3	Terminal Block	025-34408-000	025-34482-000	025-34485-000	025-34485-000	N/A	N/A	N/A
	1	Circuit Breaker	N/A	N/A	N/A	N/A	024-31843-000	024-31842-000	024-31838-000
	1	NF Disconnect Switch	N/A	N/A	N/A	N/A	N/A	N/A	N/A
22	1	Handle, CB or NF Disc. Sw.	N/A	N/A	N/A	N/A	025-34417-000	025-34417-000	025-34417-000
23	1	Lug Kit (Not Shown)	N/A	N/A	N/A	N/A	025-34478-000	025-34478-000	025-34477-000

S Recommended Spare Part

CONTROL PANEL AND POWER PANEL (CONT'D)

TABLE 7A (CONT'D) – CONTROL PANEL AND POWER PANEL COMPONENTS (SEE FIGS. 8-12, PAGES 20-24)

Item NO.	qty	Description	371-02573 -204	371-02573 -206	371-02573 -208	371-02573 -210	371-02573 -213	371-02573 -215	371-02573 -217
1	1	Contactora 600V (CR 1 & 2)	024-31635-000	024-31635-000	024-31635-000	024-31635-000	024-31635-000	024-31635-000	024-31635-000
2	2	Compressor Contactora	024-31830-000	024-31830-000	024-31636-000	024-31817-000	024-31830-000	024-31602-000	024-31813-000
3	2	Ground Lug, Cu	025-34455-000	025-34455-000	025-34455-000	025-34455-000	025-34455-000	025-34455-000	025-34455-000
4	4	Surge Suppressor	031-00808-000	031-00808-000	031-00808-000	031-00808-000	031-00808-000	031-00808-000	031-00808-000
5	2	Compressor Starter	N/A	N/A	N/A	N/A	N/A	025-34489-000	024-31816-000
6	2	Auxilliary Contactora	N/A	N/A	N/A	N/A	N/A	024-31814-000	024-31814-000
7S	2	Fan Contactora	025-34448-000	025-34448-000	025-34445-000	025-34448-000	025-34448-000	025-34445-000	025-34448-000
8S	2	Fan Motor Starter	025-34449-000	025-34449-000	025-34446-000	025-34449-000	025-34450-000	025-34446-000	025-34449-000
9	2	Din Rail Slotted	025-29167-000	025-29167-000	025-29167-000	025-29167-000	025-29167-000	025-29167-000	025-29167-000
10	1	Ground Lug, Cu	025-34455-000	025-34455-000	025-34088-000	025-34455-000	025-34455-000	025-34088-000	025-34088-000
11S	1	Micro Board	031-02050-001	031-02050-001	031-02050-001	031-02050-001	031-02050-001	031-02050-001	031-02050-001
12S	1	Firmware EPROM	031-02049-001	031-02049-001	031-02049-001	031-02049-001	031-02049-001	031-02049-001	031-02049-001
13	1	Transformer 115/24V	025-30889-000	025-30889-000	025-30889-000	025-30889-000	025-30889-000	025-30889-000	025-30889-000
14	1	Fuse	025-34483-000	025-34483-000	025-34483-000	025-34483-000	025-34483-000	025-34483-000	025-34483-000
15	1	Fuseholder (Not Shown)	025-34484-000	025-34484-000	025-34484-000	025-34484-000	025-34484-000	025-34484-000	025-34484-000
16	1	Display	031-01110-000	031-01110-000	031-01110-000	031-01110-000	031-01110-000	031-01110-000	031-01110-000
17	1	Keypad	024-27838-000	024-27838-000	024-27838-000	024-27838-000	024-27838-000	024-27838-000	024-27838-000
18	1	Switch, On/Off	024-25517-000	024-25517-000	024-25517-000	024-25517-000	024-25517-000	024-25517-000	024-25517-000
19	1	Ribbon Cable	031-01109-211	031-01109-211	031-01109-211	031-01109-211	031-01109-211	031-01109-211	031-01109-211
20	2	Terminal Block	025-34447-000	025-34447-000	025-34447-000	025-34447-000	025-34447-000	025-34447-000	025-34447-000
21	3	Terminal Block	N/A	N/A	N/A	N/A	N/A	N/A	N/A
	1	Circuit Breaker	024-31837-000	024-31852-000	024-31844-000	024-31889-000	024-31838-000	024-31649-000	024-31843-000
	1	NF Disconnect Switch	N/A	N/A	N/A	N/A	N/A	N/A	N/A
22	1	Operator Mechanism	025-34417-000	025-34417-000	025-34417-000	025-34417-000	025-34417-000	025-34417-000	025-34417-000
23	1	Lug Kit (Not Shown)	025-34477-000	025-34477-000	025-34479-000	025-34477-000	025-34477-000	025-34479-000	025-34478-000

S Recommended Spare Part

CONTROL PANEL AND POWER PANEL (CONT'D)

TABLE 7A (CONT'D) – CONTROL PANEL AND POWER PANEL COMPONENTS (SEE FIGS. 8-12, PAGES 20-24)

Item NO.	qty	Description	371-02573 -218	371-02573 -220	371-02573 -222	371-02573 -225	371-02573 -229	371-02573 -230	371-02573 -231
1	1	Contactora 600V (CR 1 & 2)	024-31635-000	024-31635-000	024-31635-000	024-31635-000	024-31635-000	024-31635-000	024-31635-000
2	2	Compressor Contactora	024-31818-000	024-31817-000	024-31640-000	024-31818-000	024-31602-000	024-31602-000	024-31813-000*
3	2	Ground Lug, Cu	025-34455-000	025-34455-000	025-34455-000	025-34455-000	025-34455-000	025-34455-000	025-34455-000
4	4	Surge Suppressor	031-00808-000	031-00808-000	031-00808-000	031-00808-000	031-00808-000	031-00808-000	031-00808-000
5	2	Compressor Starter	025-34489-000	025-34456-000	025-34488-000	025-34489-000	025-34488-000	025-34488-000	024-31816-000
6	2	Auxilliary Contactora	N/A	N/A	024-31814-000	N/A	024-31814-000	024-31814-000	024-31814-000
7S	2	Fan Contactora	025-34448-000	025-34448-000	025-34445-000	025-34448-000	025-34445-000	025-34445-000	025-34448-000
8S	2	Fan Motor Starter	025-34449-000	025-34450-000	025-34446-000	025-34449-000	025-34446-000	025-34446-000	025-34449-000
9	2	Din Rail Slotted	025-29167-000	025-29167-000	025-29167-000	025-29167-000	025-29167-000	025-29167-000	025-29167-000
10	1	Ground Lug, Cu	025-34088-000	025-34455-000	025-34089-000	025-34088-000	025-34085-000	025-34455-000	025-34088-000
11S	1	Micro Board	031-02050-001	031-02050-001	031-02050-001	031-02050-001	031-02050-001	031-02050-001	031-02050-001
12S	1	Firmware EPROM	031-02049-001	031-02049-001	031-02049-001	031-02049-001	031-02049-001	031-02049-001	031-02049-001
13	1	Transformer 115/24V	025-30889-000	025-30889-000	025-30889-000	025-30889-000	025-30889-000	025-30889-000	025-30889-000
14	1	Fuse	025-34483-000	025-34483-000	025-34483-000	025-34483-000	025-34483-000	025-34483-000	025-34483-000
15	1	Fuseholder (Not Shown)	025-34484-000	025-34484-000	025-34484-000	025-34484-000	025-34484-000	025-34484-000	025-34484-000
16	1	Display	031-01110-000	031-01110-000	031-01110-000	031-01110-000	031-01110-000	031-01110-000	031-01110-000
17	1	Keypad	024-27838-000	024-27838-000	024-27838-000	024-27838-000	024-27838-000	024-27838-000	024-27838-000
18	1	Switch, On/Off	024-25517-000	024-25517-000	024-25517-000	024-25517-000	024-25517-000	024-25517-000	024-25517-000
19	1	Ribbon Cable	031-01109-211	031-01109-211	031-01109-211	031-01109-211	031-01109-211	031-01109-211	031-01109-211
20	2	Terminal Block	025-34447-000	025-34447-000	025-34447-000	025-34447-000	025-34447-000	025-34447-000	025-34447-000
21	3	Terminal Block	N/A	N/A	N/A	N/A	N/A	N/A	N/A
	1	Circuit Breaker	024-31480-000	024-31839-000	024-31820-000	024-31841-000	024-31819-000	024-31851-000	024-31844-000
	1	NF Disconnect Switch	N/A	N/A	N/A	N/A	N/A	N/A	N/A
22	1	Operator Mechanism	025-34417-000	025-34417-000	025-34417-000	025-34417-000	025-34417-000	025-34417-000	025-34417-000
23	1	Lug Kit (Not Shown)	025-34478-000	025-34477-000	025-34480-000	025-34478-000	025-34480-000	025-34480-000	025-34479-000

S Recommended Spare Part

CONTROL PANEL AND POWER PANEL (CONT'D)

TABLE 7A (CONT'D) – CONTROL PANEL AND POWER PANEL COMPONENTS (SEE FIGS. 8-12, PAGES 20-24)

Item NO.	qty	Description	371-02573 -232	371-02573 -234	371-02573 -303	371-02573 -304	371-02573 -306	371-02573 -308	371-02573 -309
1	1	Contactora 600V (CR 1 & 2)	024-31635-000	024-31635-000	024-31635-000	024-31635-000	024-31635-000	024-31635-000	024-31635-000
2	2	Compressor Contactora	024-31818-000*	024-31817-000*	024-31817-000	024-31830-000	024-31830-000	024-31636-000	024-31636-000
3	2	Ground Lug, Cu	025-34455-000	025-34455-000	025-34455-000	025-34455-000	025-34455-000	025-34455-000	025-34455-000
4	4	Surge Suppressor	031-00808-000	031-00808-000	031-00808-000	031-00808-000	031-00808-000	031-00808-000	031-00808-000
5	2	Compressor Starter	025-34489-000	025-34486-000	N/A	025-34489-000	N/A	N/A	N/A
6	2	Auxilliary Contactora	N/A	N/A	N/A	N/A	N/A	N/A	N/A
7S	2	Fan Contactora	025-34448-000	025-34448-000	025-34448-000	025-34448-000	025-34448-000	025-34445-000	025-34445-000
8S	2	Fan Motor Starter	025-34449-000	025-34450-000	025-34449-000	025-34449-000	025-34450-000	025-34446-000	025-34446-000
9	2	Din Rail Slotted	025-29167-000	025-29167-000	025-29167-000	025-29167-000	025-29167-000	025-29167-000	025-29167-000
10	1	Ground Lug, Cu	025-34088-000	025-34088-000	025-34455-000	025-34455-000	025-34455-000	025-34089-000	025-34088-000
11S	1	Micro Board	031-02050-001	031-02050-001	031-02050-001	031-02050-001	031-02050-001	031-02050-001	031-02050-001
12S	1	Firmware EPROM	031-02049-001	031-02049-001	031-02049-001	031-02049-001	031-02049-001	031-02049-001	031-02049-001
13	1	Transformer 115/24V	025-30889-000	025-30889-000	025-30889-000	025-30889-000	025-30889-000	025-30889-000	025-30889-000
14	1	Fuse	025-34483-000	025-34483-000	025-34483-000	025-34483-000	025-34483-000	025-34483-000	025-34483-000
15	1	Fuseholder (Not Shown)	025-34484-000	025-34484-000	025-34484-000	025-34484-000	025-34484-000	025-34484-000	025-34484-000
16	1	Display	031-01110-000	031-01110-000	031-01110-000	031-01110-000	031-01110-000	031-01110-000	031-01110-000
17	1	Keypad	024-27838-000	024-27838-000	024-27838-000	024-27838-000	024-27838-000	024-27838-000	024-27838-000
18	1	Switch, On/Off	024-25517-000	024-25517-000	024-25517-000	024-25517-000	024-25517-000	024-25517-000	024-25517-000
19	1	Ribbon Cable	031-01109-211	031-01109-211	031-01109-211	031-01109-211	031-01109-211	031-01109-211	031-01109-211
20	2	Terminal Block	025-34447-000	025-34447-000	025-34447-000	025-34447-000	025-34447-000	025-34447-000	025-34447-000
21	3	Terminal Block	N/A	N/A	N/A	N/A	N/A	N/A	N/A
	1	Circuit Breaker	024-31843-000	024-31841-000	024-31839-000	024-31839-000	024-31839-000	N/A	024-31843-000
	1	NF Disconnect Switch	N/A	N/A	N/A	N/A	N/A	024-31888-000	N/A
22	1	Operator Mechanism	025-34417-000	025-34417-000	025-34417-000	025-34417-000	025-34417-000	025-34417-000	025-34417-000
23	1	Lug Kit (Not Shown)	025-34478-000	025-34478-000	025-34477-000	025-34477-000	025-34477-000	025-34479-000	025-34478-000

S Recommended Spare Part

CONTROL PANEL AND POWER PANEL (CONT'D)

TABLE 7A (CONT'D) – CONTROL PANEL AND POWER PANEL COMPONENTS (SEE FIGS. 8-12, PAGES 20-24)

Item NO.	qty	Description	371-02573 -313	371-02573 -315	371-02573 -318	371-02573 -322	371-02573 -325	371-02573 -329	371-02573 -334
1	1	Contactora 600V (CR 1 & 2)	024-31635-000	024-31635-000	024-31635-000	024-31635-000	024-31635-000	024-31635-000	024-31635-000
2	2	Compressor Contactora	024-31830-000	024-31602-000	024-31818-000	024-31640-000	024-31818-000	024-31602-000*	024-31817-000*
3	2	Ground Lug, Cu	025-34455-000	025-34455-000	025-34455-000	025-34455-000	025-34455-000	025-34455-000	025-34455-000
4	4	Surge Suppressor	031-00808-000	031-00808-000	031-00808-000	031-00808-000	031-00808-000	031-00808-000	031-00808-000
5	2	Compressor Starter	N/A	025-34488-000	025-34489-000	025-34488-000	025-34488-000	025-34488-000	025-34486-000
6	2	Auxilliary Contactora	N/A	024-31814-000	N/A	024-31814-000	N/A	024-31814-000	N/A
7S	2	Fan Contactora	025-34448-000	025-34445-000	025-34448-000	025-34445-000	025-34448-000	025-34445-000	025-34448-000
8S	2	Fan Motor Starter	025-34450-000	025-34446-000	025-34449-000	025-34446-000	025-34449-000	025-34446-000	025-34450-000
9	2	Din Rail Slotted	025-29167-000	025-29167-000	025-29167-000	025-29167-000	025-29167-000	025-29167-000	025-29167-000
10	1	Ground Lug, Cu	025-34455-000	025-34089-000	025-34455-000	025-34089-000	025-34088-000	025-34455-000	025-34088-000
11S	1	Micro Board	031-02050-001	031-02050-001	031-02050-001	031-02050-001	031-02050-001	031-02050-001	031-02050-001
12S	1	Firmware EPROM	031-02049-001	031-02049-001	031-02049-001	031-02049-001	031-02049-001	031-02049-001	031-02049-001
13	1	Transformer 115/24V	025-30889-000	025-30889-000	025-30889-000	025-30889-000	025-30889-000	025-30889-000	025-30889-000
14	1	Fuse	025-34483-000	025-34483-000	025-34483-000	025-34483-000	025-34483-000	025-34483-000	025-34483-000
15	1	Fuseholder (Not Shown)	025-34484-000	025-34484-000	025-34484-000	025-34484-000	025-34484-000	025-34484-000	025-34484-000
16	1	Display	031-01110-000	031-01110-000	031-01110-000	031-01110-000	031-01110-000	031-01110-000	031-01110-000
17	1	Keypad	024-27838-000	024-27838-000	024-27838-000	024-27838-000	024-27838-000	024-27838-000	024-27838-000
18	1	Switch, On/Off	024-25517-000	024-25517-000	024-25517-000	024-25517-000	024-25517-000	024-25517-000	024-25517-000
19	1	Ribbon Cable	031-01109-211	031-01109-211	031-01109-211	031-01109-211	031-01109-211	031-01109-211	031-01109-211
20	2	Terminal Block	025-34447-000	025-34447-000	025-34447-000	025-34447-000	025-34447-000	025-34447-000	025-34447-000
21	3	Terminal Block	N/A	N/A	N/A	N/A	N/A	N/A	N/A
	1	Circuit Breaker	024-31839-000	N/A	024-31839-000	N/A	024-31843-000	N/A	024-31843-000
	1	NF Disconnect Switch	N/A	024-31871-000	N/A	024-31871-000	N/A	024-31871-000	N/A
22	1	Operator Mechanism	025-34417-000	025-34417-000	025-34417-000	025-34417-000	025-34417-000	025-34417-000	025-34417-000
23	1	Lug Kit (Not Shown)	025-34477-000	025-34480-000	025-34477-000	025-34480-000	025-34478-000	025-34480-000	025-34478-000

S Recommended Spare Part

CONTROL PANEL AND POWER PANEL (CONT'D)

TABLE 7A (CONT'D) – CONTROL PANEL AND POWER PANEL COMPONENTS (SEE FIGS. 8-12, PAGES 20-24)

Item NO.	qty	Description	371-02572 -101	371-02572 -102	371-02572 -103	371-02572 -104	371-02572 -106	371-02572 -108	371-02572 -110
1	2	Contactora 600V (CR 1 & 2)	024-31635-000	024-31635-000	024-31635-000	024-31635-000	024-31635-000	024-31635-000	024-31635-000
2	2	Compressor Contactora	024-31813-000	024-31813-000	024-31817-000	024-31817-000	024-31830-000	024-31602-000	024-31813-000
	2		024-31813-000	024-31813-000	024-31817-000	024-31817-000	024-31830-000	024-31602-000	024-31813-000
3	4	Ground Lug, Cu	025-34455-000	025-34455-000	025-34455-000	025-34455-000	025-34455-000	025-34455-000	025-34455-000
4	8	Surge Suppressor	031-00808-000	031-00808-000	031-00808-000	031-00808-000	031-00808-000	031-00808-000	031-00808-000
5	2	Compressor Starter	024-31816-000	025-34453-000	025-34486-000	025-34453-000	024-31859-000	025-34488-000	024-31816-000
	2		024-31816-000	024-31816-000	025-34486-000	025-34453-000	024-31859-000	025-34488-000	024-31816-000
6	2	Auxilliary Contactora	024-31814-000	024-31814-000	024-31814-000	N/A	N/A	024-31814-000	024-31814-000
7S	4	Fan Contactora	025-34445-000	025-34445-000	025-34448-000	025-34448-000	025-34448-000	025-34445-000	025-34448-000
8S	4	Fan Motor Starter	025-34446-000	025-34446-000	025-34449-000	025-34449-000	025-34450-000	025-34446-000	025-34449-000
9	2	Din Rail Slotted	025-29167-000	025-29167-000	025-29167-000	025-29167-000	025-29167-000	025-29167-000	025-29167-000
10	2	Ground Lug, Cu	025-34088-000	025-34088-000	025-34088-000	025-34088-000	025-34088-000	025-34089-000	025-34088-000
11S	1	Micro Board	031-02050-001	031-02050-001	031-02050-001	031-02050-001	031-02050-001	031-02050-001	031-02050-001
12S	1	Firmware EPROM	031-02049-001	031-02049-001	031-02049-001	031-02049-001	031-02049-001	031-02049-001	031-02049-001
13	1	Transformer 115/24V	025-30889-000	025-30889-000	025-30889-000	025-30889-000	025-30889-000	025-30889-000	025-30889-000
14	1	Fuse	025-34483-000	025-34483-000	025-34483-000	025-34483-000	025-34483-000	025-34483-000	025-34483-000
15	1	Fuseholder (Not Shown)	025-34484-000	025-34484-000	025-34484-000	025-34484-000	025-34484-000	025-34484-000	025-34484-000
16	1	Display	031-01110-000	031-01110-000	031-01110-000	031-01110-000	031-01110-000	031-01110-000	031-01110-000
17	1	Keypad	024-27838-000	024-27838-000	024-27838-000	024-27838-000	024-27838-000	024-27838-000	024-27838-000
18	1	Switch, On/Off	024-25517-000	024-25517-000	024-25517-000	024-25517-000	024-25517-000	024-25517-000	024-25517-000
19	1	Ribbon Cable	031-01109-211	031-01109-211	031-01109-211	031-01109-211	031-01109-211	031-01109-211	031-01109-211
20	4	Terminal Block	025-34447-000	025-34447-000	025-34447-000	025-34447-000	025-34447-000	025-34447-000	025-34447-000
21	3	Terminal Block	025-34482-000	025-34485-000	025-34485-000	025-35644-000	025-35644-000	025-34454-000	025-34485-000
	3		025-34482-000	025-34485-000	025-34485-000	025-35644-000	025-35644-000	025-34454-000	025-34485-000
	1	Circuit Breaker	N/A	N/A	N/A	N/A	N/A	N/A	N/A
	1	NF Disconnect Switch	N/A	N/A	N/A	N/A	N/A	N/A	N/A
22	1	Operator Mechanism	N/A	N/A	N/A	N/A	N/A	N/A	N/A
23	1	Lug Kit (Not Shown)	N/A	N/A	N/A	N/A	N/A	N/A	N/A

CONTROL PANEL AND POWER PANEL (CONT'D)

S Recommended Spare Part

TABLE 7A (CONT'D) – CONTROL PANEL AND POWER PANEL COMPONENTS (SEE FIGS. 8-12, PAGES 20-24)

Item NO.	qty	Description	371-02572 -111	371-02572 -115	371-02572 -117	371-02572 -118	371-02572 -120	371-02572 -122	371-02572 -127
1	2	Contactor 600V (CR 1 & 2)	024-31635-000	024-31635-000	024-31635-000	024-31635-000	024-31635-000	024-31635-000	024-31635-000
2	2	Compressor Contactor	024-31818-000	024-31602-000	024-31813-000	024-31818-000	024-31817-000	024-31640-000	024-31817-000
	2		024-31818-000	024-31640-000	024-31636-000	024-31813-000	024-31818-000	024-31813-000	024-31817-000
3	4	Ground Lug, Cu	025-34455-000	025-34455-000	025-34455-000	025-34455-000	025-34455-000	025-34455-000	025-34455-000
4	8	Surge Suppressor	031-00808-000	031-00808-000	031-00808-000	031-00808-000	031-00808-000	031-00808-000	031-00808-000
5	2	Compressor Starter	025-34489-000	025-34488-000	024-31816-000	025-34489-000	025-34486-000	025-34488-000	025-34486-000
	2		025-34489-000	025-34488-000	024-31816-000	024-31816-000	025-34489-000	025-34488-000	025-34486-000
6	2	Auxilliary Contactor	N/A	024-31814-000	024-31814-000	024-31814-000	N/A	024-31814-000	N/A
7S	4	Fan Contactor	025-34448-000	025-34445-000	025-34448-000	025-34448-000	025-34448-000	025-34445-000	025-34448-000
8S	4	Fan Motor Starter	025-34449-000	025-34446-000	025-34449-000	025-34449-000	025-34450-000	025-34446-000	025-34450-000
9	2	Din Rail Slotted	025-29167-000	025-29167-000	025-29167-000	025-29167-000	025-29167-000	025-29167-000	025-29167-000
10	2	Ground Lug, Cu	025-34088-000	025-34089-000	025-34088-000	025-34088-000	025-34089-000	025-34089-000	025-34088-000
11S	1	Micro Board	031-02050-001	031-02050-001	031-02050-001	031-02050-001	031-02050-001	031-02050-001	031-02050-001
12S	1	Firmware EPROM	031-02049-001	031-02049-001	031-02049-001	031-02049-001	031-02049-001	031-02049-001	031-02049-001
13	1	Transformer 115/24V	025-30889-000	025-30889-000	025-30889-000	025-30889-000	025-30889-000	025-30889-000	025-30889-000
14	1	Fuse	025-34483-000	025-34483-000	025-34483-000	025-34483-000	025-34483-000	025-34483-000	025-34483-000
15	1	Fuseholder (Not Shown)	025-34484-000	025-34484-000	025-34484-000	025-34484-000	025-34484-000	025-34484-000	025-34484-000
16	1	Display	031-01110-000	031-01110-000	031-01110-000	031-01110-000	031-01110-000	031-01110-000	031-01110-000
17	1	Keypad	024-27838-000	024-27838-000	024-27838-000	024-27838-000	024-27838-000	024-27838-000	024-27838-000
18	1	Switch, On/Off	024-25517-000	024-25517-000	024-25517-000	024-25517-000	024-25517-000	024-25517-000	024-25517-000
19	1	Ribbon Cable	031-01109-211	031-01109-211	031-01109-211	031-01109-211	031-01109-211	031-01109-211	031-01109-211
20	4	Terminal Block	025-34447-000	025-34447-000	025-34447-000	025-34447-000	025-34447-000	025-34447-000	025-34447-000
21	3	Terminal Block	025-34485-000	025-34454-000	025-34485-000	025-34485-000	025-34485-000	025-34454-000	025-34485-000
	3		025-34485-000	025-34454-000	025-34485-000	025-34485-000	025-34485-000	025-34454-000	025-34485-000
	1	Circuit Breaker	N/A	N/A	N/A	N/A	N/A	N/A	N/A
	1	NF Disconnect Switch	N/A	N/A	N/A	N/A	N/A	N/A	N/A
22	1	Operator Mechanism	N/A	N/A	N/A	N/A	N/A	N/A	N/A
23	1	Lug Kit (Not Shown)	N/A	N/A	N/A	N/A	N/A	N/A	N/A

S Recommended Spare Part

CONTROL PANEL AND POWER PANEL (CONT'D)

TABLE 7A (CONT'D) – CONTROL PANEL AND POWER PANEL COMPONENTS (SEE FIGS. 8-12, PAGES 20-24)

Item NO.	qty	Description	371-02572 -201	371-02572 -202	371-02572 -203	371-02572 -204	371-02572 -206	371-02572 -208	371-02572 -209
1	2	Contactora 600V (CR 1 & 2)	024-31635-000	024-31635-000	024-31635-000	024-31635-000	024-31635-000	024-31635-000	024-31635-000
2	2	Compressor Contactora	024-31813-000	024-31813-000	024-31817-000	024-31817-000	024-31830-000	024-31602-000	024-31602-000
	2		024-31813-000	024-31813-000	024-31817-000	024-31817-000	024-31830-000	024-31602-000	024-31620-000
3	4	Ground Lug, Cu	025-34455-000	025-34455-000	025-34455-000	025-34455-000	025-34455-000	025-34455-000	025-34455-000
4	8	Surge Suppressor	031-00808-000	031-00808-000	031-00808-000	031-00808-000	031-00808-000	031-00808-000	031-00808-000
5	2	Compressor Starter	024-31816-000	024-31816-000	025-34486-000	025-34453-000	024-31859-000	025-34488-000	025-34488-000
	2		024-31816-000	024-31816-000	025-34486-000	025-34453-000	024-31859-000	025-34488-000	025-34488-000
6	2	Auxilliary Contactora	024-31814-000	024-31814-000	N/A	N/A	N/A	024-31814-000	024-31814-000
7S	4	Fan Contactora	025-34445-000	025-34445-000	025-34448-000	025-34448-000	025-34448-000	025-34445-000	025-34445-000
8S	4	Fan Motor Starter	025-34446-000	025-34446-000	025-34449-000	025-34450-000	025-34450-000	025-34446-000	025-34446-000
9	2	Din Rail Slotted	025-29167-000	025-29167-000	025-29167-000	025-29167-000	025-29167-000	025-29167-000	025-29167-000
10	2	Ground Lug, Cu	025-34085-000	025-34089-000	025-34088-000	025-34088-000	025-34088-000	025-34089-000	025-34085-000
11S	1	Micro Board	031-02050-001	031-02050-001	031-02050-001	031-02050-001	031-02050-001	031-02050-001	031-02050-001
12S	1	Firmware EPROM	031-02049-001	031-02049-001	031-02049-001	031-02049-001	031-02049-001	031-02049-001	031-02049-001
13	1	Transformer 115/24V	025-30889-000	025-30889-000	025-30889-000	025-30889-000	025-30889-000	025-30889-000	025-30889-000
14	1	Fuse	025-34483-000	025-34483-000	025-34483-000	025-34483-000	025-34483-000	025-34483-000	025-34483-000
15	1	Fuseholder (Not Shown)	025-34484-000	025-34484-000	025-34484-000	025-34484-000	025-34484-000	025-34484-000	025-34484-000
16	1	Display	031-01110-000	031-01110-000	031-01110-000	031-01110-000	031-01110-000	031-01110-000	031-01110-000
17	1	Keypad	024-27838-000	024-27838-000	024-27838-000	024-27838-000	024-27838-000	024-27838-000	024-27838-000
18	1	Switch, On/Off	024-25517-000	024-25517-000	024-25517-000	024-25517-000	024-25517-000	024-25517-000	024-25517-000
19	1	Ribbon Cable	031-01109-211	031-01109-211	031-01109-211	031-01109-211	031-01109-211	031-01109-211	031-01109-211
20	4	Terminal Block	025-34447-000	025-34447-000	025-34447-000	025-34447-000	025-34447-000	025-34447-000	025-34447-000
21	3	Terminal Block	N/A	N/A	N/A	N/A	N/A	N/A	N/A
	3		N/A	N/A	N/A	N/A	N/A	N/A	N/A
	1	Circuit Breaker	024-31851-000	024-31820-000	024-31844-000	024-31842-000	024-31840-000	025-34424-000	025-34419-000
	1	NF Disconnect Switch	N/A	N/A	N/A	N/A	N/A	N/A	N/A
22	1	Operator Mechanism	025-34417-000	025-34417-000	025-34417-000	025-34417-000	025-34417-000	025-34417-000	025-34417-000
23	1	Lug Kit	025-34480-000	025-34480-000	025-34479-000	025-34478-000	025-34478-000	025-34481-000	025-34418-000

CONTROL PANEL AND POWER PANEL (CONT'D)

S Recommended Spare Part

TABLE 7A (CONT'D) – CONTROL PANEL AND POWER PANEL COMPONENTS (SEE FIGS. 8-12, PAGES 20-24)

Item NO.	qty	Description	371-02572 -210	371-02572 -211	371-02572 -215	371-02572 -217	371-02572 -218	371-02572 -220	371-02572 -222
1	2	Contactor 600V (CR 1 & 2)	024-31635-000	024-31635-000	024-31635-000	024-31635-000	024-31635-000	024-31635-000	024-31635-000
2	2	Compressor Contactor	024-31813-000	024-31818-000	024-31602-000	024-31813-000	024-31818-000	024-31817-000	024-31640-000
	2		024-31813-000	024-31818-000	024-31640-000	024-31636-000	024-31813-000	024-31818-000	024-31640-000
3	4	Ground Lug, Cu	025-34455-000	025-34455-000	025-34455-000	025-34455-000	025-34455-000	025-34455-000	025-34455-000
4	8	Surge Suppressor	031-00808-000	031-00808-000	031-00808-000	031-00808-000	031-00808-000	031-00808-000	031-00808-000
5	2	Compressor Starter	024-31816-000	025-34489-000	025-34488-000	024-31816-000	025-34489-000	025-34486-000	025-34488-000
	2		024-31816-000	025-34489-000	025-34488-000	024-31816-000	024-31816-000	025-34489-000	025-34488-000
6	2	Auxilliary Contactor	024-31814-000	N/A	024-31814-000	024-31814-000	024-31814-000	N/A	024-31814-000
7S	4	Fan Contactor	025-34448-000	025-34448-000	025-34445-000	025-34448-000	025-34448-000	025-34448-000	025-34445-000
8S	4	Fan Motor Starter	025-34449-000	025-34449-000	025-34446-000	025-34449-000	025-34449-000	025-34450-000	025-34446-000
9	2	Din Rail Slotted	025-29167-000	025-29167-000	025-29167-000	025-29167-000	025-29167-000	025-29167-000	025-29167-000
10	2	Ground Lug, Cu	025-34089-000	025-34088-000	025-34089-000	025-34089-000	025-34088-000	025-34088-000	025-34089-000
11S	1	Micro Board	031-02050-001	031-02050-001	031-02050-001	031-02050-001	031-02050-001	031-02050-001	031-02050-001
12S	1	Firmware EPROM	031-02049-001	031-02049-001	031-02049-001	031-02049-001	031-02049-001	031-02049-001	031-02049-001
13	1	Transformer 115/24V	025-30889-000	025-30889-000	025-30889-000	025-30889-000	025-30889-000	025-30889-000	025-30889-000
14	1	Fuse	025-34483-000	025-34483-000	025-34483-000	025-34483-000	025-34483-000	025-34483-000	025-34483-000
15	1	Fuseholder (Not Shown)	025-34484-000	025-34484-000	025-34484-000	025-34484-000	025-34484-000	025-34484-000	025-34484-000
16	1	Display	031-01110-000	031-01110-000	031-01110-000	031-01110-000	031-01110-000	031-01110-000	031-01110-000
17	1	Keypad	024-27838-000	024-27838-000	024-27838-000	024-27838-000	024-27838-000	024-27838-000	024-27838-000
18	1	Switch, On/Off	024-25517-000	024-25517-000	024-25517-000	024-25517-000	024-25517-000	024-25517-000	024-25517-000
19	1	Ribbon Cable	031-01109-211	031-01109-211	031-01109-211	031-01109-211	031-01109-211	031-01109-211	031-01109-211
20	4	Terminal Block	025-34447-000	025-34447-000	025-34447-000	025-34447-000	025-34447-000	025-34447-000	025-34447-000
21	3	Terminal Block	N/A	N/A	N/A	N/A	N/A	N/A	N/A
	3		N/A	N/A	N/A	N/A	N/A	N/A	N/A
	1	Circuit Breaker	024-31649-000	024-31844-000	025-34424-000	024-31820-000	024-31844-000	024-31843-000	025-34424-000
	1	NF Disconnect Switch	N/A	N/A	N/A	N/A	N/A	N/A	N/A
22	1	Operator Mechanism	025-34417-000	025-34417-000	025-34417-000	025-34417-000	025-34417-000	025-34417-000	025-34417-000
23	1	Lug Kit	025-34479-000	025-34479-000	025-34481-000	025-34480-000	025-34479-000	025-34478-000	025-34481-000

S Recommended Spare Part

CONTROL PANEL AND POWER PANEL (CONT'D)

TABLE 7A (CONT'D) – CONTROL PANEL AND POWER PANEL COMPONENTS (SEE FIGS. 8-12, PAGES 20-24)

Item NO.	qty	Description	371-02572 -224	371-02572 -227	371-02572 -301	371-02572 -303	371-02572 -304	371-02572 -306	371-02572 -308
1	2	Contactora 600V (CR 1 & 2)	024-31635-000	024-31635-000	024-31635-000	024-31635-000	024-31635-000	024-31635-000	024-31635-000
2	2	Compressor Contactora	024-31813-000	024-31817-000	024-31813-000	024-31817-000	024-31817-000	024-31830-000	024-31602-000
	2		024-31813-000	024-31817-000	024-31813-000	024-31817-000	024-31817-000	024-31830-000	024-31602-000
3	4	Ground Lug, Cu	025-34455-000	025-34455-000	025-34455-000	025-34455-000	025-34455-000	025-34455-000	025-34455-000
4	8	Surge Suppressor	031-00808-000	031-00808-000	031-00808-000	031-00808-000	031-00808-000	031-00808-000	031-00808-000
5	2	Compressor Starter	024-31816-000	025-34486-000	024-31816-000	025-34486-000	025-34453-000	024-31859-000	025-34488-000
	2		024-31816-000	025-34486-000	024-31816-000	025-34486-000	025-34453-000	024-31859-000	025-34488-000
6	2	Auxilliary Contactora	024-31814-000	N/A	024-31814-000	N/A	N/A	N/A	N/A
7S	4	Fan Contactora	025-34448-000	025-34448-000	025-34445-000	025-34448-000	025-34448-000	025-34448-000	025-34445-000
8S	4	Fan Motor Starter	025-34449-000	025-34450-000	025-34446-000	025-34449-000	025-34449-000	025-34450-000	025-34446-000
9	2	Din Rail Slotted	025-29167-000	025-29167-000	025-29167-000	025-29167-000	025-29167-000	025-29167-000	025-29167-000
10	2	Ground Lug, Cu	025-34089-000	025-34088-000	025-34089-000	025-34089-000	025-34088-000	025-34088-000	025-34089-000
11S	1	Micro Board	031-02050-001	031-02050-001	031-02050-001	031-02050-001	031-02050-001	031-02050-001	031-02050-001
12S	1	Firmware EPROM	031-02049-001	031-02049-001	031-02049-001	031-02049-001	031-02049-001	031-02049-001	031-02049-001
13	1	Transformer 115/24V	025-30889-000	025-30889-000	025-30889-000	025-30889-000	025-30889-000	025-30889-000	025-30889-000
14	1	Fuse	025-34483-000	025-34483-000	025-34483-000	025-34483-000	025-34483-000	025-34483-000	025-34483-000
15	1	Fuseholder (Not Shown)	025-34484-000	025-34484-000	025-34484-000	025-34484-000	025-34484-000	025-34484-000	025-34484-000
16	1	Display	031-01110-000	031-01110-000	031-01110-000	031-01110-000	031-01110-000	031-01110-000	031-01110-000
17	1	Keypad	024-27838-000	024-27838-000	024-27838-000	024-27838-000	024-27838-000	024-27838-000	024-27838-000
18	1	Switch, On/Off	024-25517-000	024-25517-000	024-25517-000	024-25517-000	024-25517-000	024-25517-000	024-25517-000
19	1	Ribbon Cable	031-01109-211	031-01109-211	031-01109-211	031-01109-211	031-01109-211	031-01109-211	031-01109-211
20	4	Terminal Block	025-34447-000	025-34447-000	025-34447-000	025-34447-000	025-34447-000	025-34447-000	025-34447-000
21	3	Terminal Block	N/A	N/A	N/A	N/A	N/A	N/A	N/A
	3		N/A	N/A	N/A	N/A	N/A	N/A	N/A
	1	Circuit Breaker	024-31820-000	024-31843-000	024-31871-000	N/A	024-31843-000	024-31843-000	N/A
	1	NF Disconnect Switch	N/A	N/A	N/A	024-31888-000	N/A	N/A	024-25564-000
22	1	Operator Mechanism	025-34417-000	025-34417-000	025-34417-000	025-34417-000	025-34417-000	025-34417-000	025-34417-000
23	1	Lug Kit	025-34480-000	025-34478-000	025-34480-000	025-34479-000	025-34478-000	025-34478-000	025-34481-000

CONTROL PANEL AND POWER PANEL (CONT'D)

S Recommended Spare Part

TABLE 7A (CONT'D) – CONTROL PANEL AND POWER PANEL COMPONENTS (SEE FIGS. 8-12, PAGES 20-24)

Item NO.	qty	Description	371-02572 -309	371-02572 -310	371-02572 -311	371-02572 -315	371-02572 -317	371-02572 -318	371-02572 -320
1	2	Contactor 600V (CR 1 & 2)	024-31635-000	024-31635-000	024-31635-000	024-31635-000	024-31635-000	024-31635-000	024-31635-000
2	2	Compressor Contactor	024-31602-000	024-31813-000	024-31818-000	024-31602-000	024-31813-000	024-31818-000	024-31817-000
	2		024-31602-000	024-31813-000	024-31818-000	024-31640-000	024-31636-000	024-31813-000	024-31818-000
3	4	Ground Lug, Cu	025-34455-000	025-34455-000	025-34455-000	025-34455-000	025-34455-000	025-34455-000	025-34455-000
4	8	Surge Suppressor	031-00808-000	031-00808-000	031-00808-000	031-00808-000	031-00808-000	031-00808-000	031-00808-000
5	2	Compressor Starter	025-34488-000	024-31816-000	025-34489-000	025-34488-000	024-31816-000	025-34489-000	025-34486-000
	2		025-34488-000	024-31816-000	025-34489-000	025-34488-000	024-31816-000	024-31816-000	025-34489-000
6	2	Auxilliary Contactor	024-31814-000	024-31814-000	N/A	024-31814-000	024-31814-000	024-31814-000	N/A
7S	4	Fan Contactor	025-34445-000	025-34448-000	025-34448-000	025-34445-000	025-34448-000	025-34448-000	025-34448-000
8S	4	Fan Motor Starter	025-34446-000	025-34449-000	025-34449-000	025-34446-000	025-34449-000	025-34449-000	025-34450-000
9	2	Din Rail Slotted	025-29167-000	025-29167-000	025-29167-000	025-29167-000	025-29167-000	025-29167-000	025-29167-000
10	2	Ground Lug, Cu	025-34085-000	025-34088-000	025-34089-000	025-34089-000	025-34085-000	025-34089-000	025-34089-000
11S	1	Micro Board	031-02050-001	031-02050-001	031-02050-001	031-02050-001	031-02050-001	031-02050-001	031-02050-001
12S	1	Firmware EPROM	031-02049-001	031-02049-001	031-02049-001	031-02049-001	031-02049-001	031-02049-001	031-02049-001
13	1	Transformer 115/24V	025-30889-000	025-30889-000	025-30889-000	025-30889-000	025-30889-000	025-30889-000	025-30889-000
14	1	Fuse	025-34483-000	025-34483-000	025-34483-000	025-34483-000	025-34483-000	025-34483-000	025-34483-000
15	1	Fuseholder (Not Shown)	025-34484-000	025-34484-000	025-34484-000	025-34484-000	025-34484-000	025-34484-000	025-34484-000
16	1	Display	031-01110-000	031-01110-000	031-01110-000	031-01110-000	031-01110-000	031-01110-000	031-01110-000
17	1	Keypad	024-27838-000	024-27838-000	024-27838-000	024-27838-000	024-27838-000	024-27838-000	024-27838-000
18	1	Switch, On/Off	024-25517-000	024-25517-000	024-25517-000	024-25517-000	024-25517-000	024-25517-000	024-25517-000
19	1	Ribbon Cable	031-01109-211	031-01109-211	031-01109-211	031-01109-211	031-01109-211	031-01109-211	031-01109-211
20	4	Terminal Block	025-34447-000	025-34447-000	025-34447-000	025-34447-000	025-34447-000	025-34447-000	025-34447-000
21	3	Terminal Block	N/A	N/A	N/A	N/A	N/A	N/A	N/A
	3		N/A	N/A	N/A	N/A	N/A	N/A	N/A
	1	Circuit Breaker	N/A	N/A	N/A	N/A	N/A	N/A	N/A
	1	NF Disconnect Switch	024-25565-000	024-31870-000	024-31888-000	024-25564-000	024-31870-000	024-31888-000	024-31888-000
22	1	Operator Mechanism	025-34417-000	025-34417-000	025-34417-000	025-34417-000	025-34417-000	025-34417-000	025-34417-000
23	1	Lug Kit	025-34418-000	025-34480-000	025-34479-000	025-34481-000	025-34480-000	025-34479-000	025-34479-000

S Recommended Spare Part

CONTROL PANEL AND POWER PANEL (CONT'D)

TABLE 7A (CONT'D) – CONTROL PANEL AND POWER PANEL COMPONENTS (SEE FIGS. 8-12, PAGES 20-24)

Item NO.	qty	Description	371-02572 -322	371-02572 -327	371-02571 -101	371-02571 -103	371-02571 -104	371-02571 -106	371-02571 -108
1	2	Contactora 600V (CR 1 & 2)	024-31635-000	024-31635-000	024-31635-000	024-31635-000	024-31635-000	024-31635-000	024-31635-000
2	2	Compressor Contactora	024-31640-000	024-31817-000	024-31636-000	024-31818-000	024-31817-000	024-31830-000	024-31602-000
	2		024-31640-000	024-31817-000	024-31602-000	024-31813-000	024-31818-000	024-31817-000	024-31602-000
3	4	Ground Lug, Cu	025-34455-000	025-34455-000	025-34455-000	025-34455-000	025-34455-000	025-34455-000	025-34455-000
4	8	Surge Suppressor	031-00808-000	031-00808-000	031-00808-000	031-00808-000	031-00808-000	031-00808-000	031-00808-000
5	2	Compressor Starter	025-34488-000	025-34486-000	024-31816-000	025-34489-000	025-34489-000	024-31859-000	025-34488-000
	2		025-34488-000	025-34486-000	025-34488-000	024-31816-000	025-34453-000	025-34486-000	025-34488-000
6	2	Auxilliary Contactora	024-31814-000	N/A	024-31814-000	024-31814-000	N/A	N/A	024-31814-000
7S	4	Fan Contactora	025-34445-000	025-34448-000	025-34445-000	025-34448-000	025-34448-000	025-34448-000	025-34445-000
8S	4	Fan Motor Starter	025-34446-000	025-34450-000	025-34446-000	025-34449-000	025-34449-000	025-34450-000	025-34446-000
9	2	Din Rail Slotted	025-29167-000	025-29167-000	025-29167-000	025-29167-000	025-29167-000	025-29167-000	025-29167-000
10	2	Ground Lug, Cu	025-34089-000	025-34089-000	025-34085-000	025-34088-000	025-34088-000	025-34088-000	025-34088-000
11S	1	Micro Board	031-02050-001	031-02050-001	031-02050-001	031-02050-001	031-02050-001	031-02050-001	031-02050-001
12S	1	Firmware EPROM	031-02049-001	031-02049-001	031-02049-001	031-02049-001	031-02049-001	031-02049-001	031-02049-001
13	1	Transformer 115/24V	025-30889-000	025-30889-000	025-30889-000	025-30889-000	025-30889-000	025-30889-000	025-30889-000
14	1	Fuse	025-34483-000	025-34483-000	025-34483-000	025-34483-000	025-34483-000	025-34483-000	025-34483-000
15	1	Fuseholder (Not Shown)	025-34484-000	025-34484-000	025-34484-000	025-34484-000	025-34484-000	025-34484-000	025-34484-000
16	1	Display	031-01110-000	031-01110-000	031-01110-000	031-01110-000	031-01110-000	031-01110-000	031-01110-000
17	1	Keypad	024-27838-000	024-27838-000	024-27838-000	024-27838-000	024-27838-000	024-27838-000	024-27838-000
18	1	Switch, On/Off	024-25517-000	024-25517-000	024-25517-000	024-25517-000	024-25517-000	024-25517-000	024-25517-000
19	1	Ribbon Cable	031-01109-211	031-01109-211	031-01109-211	031-01109-211	031-01109-211	031-01109-211	031-01109-211
20	4	Terminal Block	025-34447-000	025-34447-000	025-34447-000	025-34447-000	025-34447-000	025-34447-000	025-34447-000
21	3	Terminal Block	N/A	N/A	025-37619-000	025-34485-000	025-34485-000	025-34485-000	025-37619-000
	3		N/A	N/A	025-37620-000	025-34482-000	025-34485-000	025-34485-000	025-37620-000
	1	Circuit Breaker	N/A	N/A	N/A	N/A	N/A	N/A	N/A
	1	NF Disconnect Switch	024-25564-000	024-31888-000	N/A	N/A	N/A	N/A	N/A
22	1	Operator Mechanism	025-34417-000	025-34417-000	N/A	N/A	N/A	N/A	N/A
23	1	Lug Kit	025-34418-000	025-34418-000	N/A	N/A	N/A	N/A	N/A

CONTROL PANEL AND POWER PANEL (CONT'D)

S Recommended Spare Part

TABLE 7A (CONT'D) – CONTROL PANEL AND POWER PANEL COMPONENTS (SEE FIGS. 8-12, PAGES 20-24)

Item NO.	qty	Description	371-02571 -109	371-02571 -110	371-02571 -111	371-02571 -113	371-02571 -115	371-02571 -117	371-02571 -120
1	2	Contactor 600V (CR 1 & 2)	024-31635-000	024-31635-000	024-31635-000	024-31635-000	024-31635-000	024-31635-000	024-31635-000
2	2	Compressor Contactor	024-31602-000	024-31813-000	024-31818-000	024-31817-000	024-31602-000	024-31813-000	024-31817-000
	2		024-31602-000	024-31813-000	024-31818-000	024-31817-000	024-31640-000	024-31636-000	024-31818-000
3	4	Ground Lug, Cu	025-34455-000	025-34455-000	025-34455-000	025-34455-000	025-34455-000	025-34455-000	025-34455-000
4	8	Surge Suppressor	031-00808-000	031-00808-000	031-00808-000	031-00808-000	031-00808-000	031-00808-000	031-00808-000
5	2	Compressor Starter	025-34488-000	025-31816-000	025-34489-000	025-34486-000	025-34488-000	024-31816-000	025-34486-000
	2		025-34488-000	025-31816-000	025-34489-000	025-34486-000	025-34488-000	024-31816-000	025-34489-000
6	2	Auxilliary Contactor	024-31814-000	024-31814-000	N/A	N/A	024-31814-000	024-31814-000	N/A
7S	4	Fan Contactor	025-34445-000	025-34448-000	025-34448-000	025-34448-000	025-34445-000	025-34448-000	025-34448-000
8S	4	Fan Motor Starter	025-34446-000	025-34449-000	025-34449-000	025-34450-000	025-34446-000	025-34449-000	025-34450-000
9	2	Din Rail Slotted	025-29167-000	025-29167-000	025-29167-000	025-29167-000	025-29167-000	025-29167-000	025-29167-000
10	2	Ground Lug, Cu	025-34085-000	025-34088-000	025-34089-000	025-34089-000	025-34085-000	025-34089-000	025-34088-000
11S	1	Micro Board	031-02050-001	031-02050-001	031-02050-001	031-02050-001	031-02050-001	031-02050-001	031-02050-001
12S	1	Firmware EPROM	031-02049-001	031-02049-001	031-02049-001	031-02049-001	031-02049-001	031-02049-001	031-02049-001
13	1	Transformer 115/24V	025-30889-000	025-30889-000	025-30889-000	025-30889-000	025-30889-000	025-30889-000	025-30889-000
14	1	Fuse	025-34483-000	025-34483-000	025-34483-000	025-34483-000	025-34483-000	025-34483-000	025-34483-000
15	1	Fuseholder (Not Shown)	025-34484-000	025-34484-000	025-34484-000	025-34484-000	025-34484-000	025-34484-000	025-34484-000
16	1	Display	031-01110-000	031-01110-000	031-01110-000	031-01110-000	031-01110-000	031-01110-000	031-01110-000
17	1	Keypad	024-27838-000	024-27838-000	024-27838-000	024-27838-000	024-27838-000	024-27838-000	024-27838-000
18	1	Switch, On/Off	024-25517-000	024-25517-000	024-25517-000	024-25517-000	024-25517-000	024-25517-000	024-25517-000
19	1	Ribbon Cable	031-01109-211	031-01109-211	031-01109-211	031-01109-211	031-01109-211	031-01109-211	031-01109-211
20	4	Terminal Block	025-34447-000	025-34447-000	025-34447-000	025-34447-000	025-34447-000	025-34447-000	025-34447-000
21	3	Terminal Block	025-37619-000	025-34482-000	025-34485-000	025-34485-000	025-37619-000	025-34482-000	025-34485-000
	3		025-37620-000	025-34482-000	025-34485-000	025-34485-000	025-37620-000	025-34482-000	025-34485-000
	1	Circuit Breaker	N/A	N/A	N/A	N/A	N/A	N/A	N/A
	1	NF Disconnect Switch	N/A	N/A	N/A	N/A	N/A	N/A	N/A
22	1	Operator Mechanism	N/A	N/A	N/A	N/A	N/A	N/A	
23	1	Lug Kit	N/A	N/A	N/A	N/A	N/A	N/A	

S Recommended Spare Part

CONTROL PANEL AND POWER PANEL (CONT'D)

TABLE 7A (CONT'D) – CONTROL PANEL AND POWER PANEL COMPONENTS (SEE FIGS. 8-12, PAGES 20-24)

Item NO.	qty	Description	371-02571 -122	371-02571 -124	371-02571 -127	371-02571 -201	371-02571 -203	371-02571 -204	371-02571 -206
1	2	Contactora 600V (CR 1 & 2)	024-31635-000	024-31635-000	024-31635-000	024-31635-000	024-31635-000	024-31635-000	024-31635-000
2	2	Compressor Contactora	024-31640-000	024-31636-000	024-31818-000	024-31636-000	024-31818-000	024-31817-000	024-31830-000
	2		024-31640-000	024-31636-000	024-31818-000	024-31602-000	024-31813-000	024-31818-000	024-31817-000
3	4	Ground Lug, Cu	025-34455-000	025-34455-000	025-34455-000	025-34455-000	025-34455-000	025-34455-000	025-34455-000
4	8	Surge Suppressor	031-00808-000	031-00808-000	031-00808-000	031-00808-000	031-00808-000	031-00808-000	031-00808-000
5	2	Compressor Starter	025-34488-000	024-31816-000	025-34489-000	024-31816-000	025-34489-000	025-34453-000	024-31859-000
	2		025-34488-000	024-31816-000	025-34489-000	025-34488-000	024-31816-000	025-34489-000	025-34486-000
6	2	Auxilliary Contactora	024-31814-000	024-31814-000	N/A	024-31814-000	024-31814-000	N/A	N/A
7S	4	Fan Contactora	025-34445-000	025-34448-000	025-34448-000	025-34445-000	025-34448-000	025-34448-000	025-34448-000
8S	4	Fan Motor Starter	025-34446-000	025-34449-000	025-34450-000	025-34446-000	025-34449-000	025-34449-000	025-34450-000
9	2	Din Rail Slotted	025-29167-000	025-29167-000	025-29167-000	025-29167-000	025-29167-000	025-29167-000	025-29167-000
10	2	Ground Lug, Cu	025-34085-000	025-34088-000	025-34088-000	025-34089-000	025-34085-000	025-34089-000	025-34088-000
11S	1	Micro Board	031-02050-001	031-02050-001	031-02050-001	031-02050-001	031-02050-001	031-02050-001	031-02050-001
12S	1	Firmware EPROM	031-02049-001	031-02049-001	031-02049-001	031-02049-001	031-02049-001	031-02049-001	031-02049-001
13	1	Transformer 115/24V	025-30889-000	025-30889-000	025-30889-000	025-30889-000	025-30889-000	025-30889-000	025-30889-000
14	1	Fuse	025-34483-000	025-34483-000	025-34483-000	025-34483-000	025-34483-000	025-34483-000	025-34483-000
15	1	Fuseholder (Not Shown)	025-34484-000	025-34484-000	025-34484-000	025-34484-000	025-34484-000	025-34484-000	025-34484-000
16	1	Display	031-01110-000	031-01110-000	031-01110-000	031-01110-000	031-01110-000	031-01110-000	031-01110-000
17	1	Keypad	024-27838-000	024-27838-000	024-27838-000	024-27838-000	024-27838-000	024-27838-000	024-27838-000
18	1	Switch, On/Off	024-25517-000	024-25517-000	024-25517-000	024-25517-000	024-25517-000	024-25517-000	024-25517-000
19	1	Ribbon Cable	031-01109-211	031-01109-211	031-01109-211	031-01109-211	031-01109-211	031-01109-211	031-01109-211
20	4	Terminal Block	025-34447-000	025-34447-000	025-34447-000	025-34447-000	025-34447-000	025-34447-000	025-34447-000
21	3	Terminal Block	025-37619-000	025-34482-000	025-34485-000	N/A	N/A	N/A	N/A
	3		025-37620-000	025-34482-000	025-34485-000	N/A	N/A	N/A	N/A
	1	Circuit Breaker	N/A	N/A	N/A	025-34424-000	024-31851-000	024-31649-000	024-31844-000
	1	NF Disconnect Switch	N/A	N/A	N/A	N/A	N/A	N/A	N/A
22	1	Operator Mechanism	N/A	N/A	N/A	025-34417-000	025-34417-000	025-34417-000	025-34417-000
23	1	Lug Kit	N/A	N/A	N/A	025-34481-000	025-34480-000	025-34479-000	025-34479-000

CONTROL PANEL AND POWER PANEL (CONT'D)

S Recommended Spare Part

TABLE 7A (CONT'D) – CONTROL PANEL AND POWER PANEL COMPONENTS (SEE FIGS. 8-12, PAGES 20-24)

Item NO.	qty	Description	371-02571 -208	371-02571 -210	371-02571 -211	371-02571 -213	371-02571 -215	371-02571 -217	371-02571 -218
1	2	Contactor 600V (CR 1 & 2)	024-31635-000	024-31635-000	024-31635-000	024-31635-000	024-31635-000	024-31635-000	024-31635-000
2	2	Compressor Contactor	024-31602-000	024-31813-000	024-31818-000	024-31817-000	024-31602-000	024-31813-000	024-31818-000
	2		024-31602-000	024-31813-000	024-31818-000	024-31817-000	024-31640-000	024-31636-000	024-31813-000
3	4	Ground Lug, Cu	025-34455-000	025-34455-000	025-34455-000	025-34455-000	025-34455-000	025-34455-000	025-34455-000
4	8	Surge Suppressor	031-00808-000	031-00808-000	031-00808-000	031-00808-000	031-00808-000	031-00808-000	031-00808-000
5	2	Compressor Starter	025-34488-000	024-31816-000	025-34489-000	025-34486-000	025-34488-000	024-31816-000	025-34489-000
	2		025-34488-000	024-31816-000	025-34489-000	025-34486-000	025-34488-000	024-31816-000	024-31816-000
6	2	Auxilliary Contactor	024-31814-000	024-31814-000	N/A	N/A	024-31814-000	024-31814-000	024-31814-000
7S	4	Fan Contactor	025-34445-000	025-34448-000	025-34448-000	025-34448-000	025-34445-000	025-34448-000	025-34448-000
8S	4	Fan Motor Starter	025-34446-000	025-34449-000	025-34449-000	025-34450-000	025-34446-000	025-34449-000	025-34449-000
9	2	Din Rail Slotted	025-29167-000	025-29167-000	025-29167-000	025-29167-000	025-29167-000	025-29167-000	025-29167-000
10	2	Ground Lug, Cu	025-34089-000	025-34085-000	025-34089-000	025-34089-000	025-34089-000	025-34085-000	025-34089-000
11S	1	Micro Board	031-02050-001	031-02050-001	031-02050-001	031-02050-001	031-02050-001	031-02050-001	031-02050-001
12S	1	Firmware EPROM	031-02049-001	031-02049-001	031-02049-001	031-02049-001	031-02049-001	031-02049-001	031-02049-001
13	1	Transformer 115/24V	025-30889-000	025-30889-000	025-30889-000	025-30889-000	025-30889-000	025-30889-000	025-30889-000
14	1	Fuse	025-34483-000	025-34483-000	025-34483-000	025-34483-000	025-34483-000	025-34483-000	025-34483-000
15	1	Fuseholder (Not Shown)	025-34484-000	025-34484-000	025-34484-000	025-34484-000	025-34484-000	025-34484-000	025-34484-000
16	1	Display	031-01110-000	031-01110-000	031-01110-000	031-01110-000	031-01110-000	031-01110-000	031-01110-000
17	1	Keypad	024-27838-000	024-27838-000	024-27838-000	024-27838-000	024-27838-000	024-27838-000	024-27838-000
18	1	Switch, On/Off	024-25517-000	024-25517-000	024-25517-000	024-25517-000	024-25517-000	024-25517-000	024-25517-000
19	1	Ribbon Cable	031-01109-211	031-01109-211	031-01109-211	031-01109-211	031-01109-211	031-01109-211	031-01109-211
20	4	Terminal Block	025-34447-000	025-34447-000	025-34447-000	025-34447-000	025-34447-000	025-34447-000	025-34447-000
21	3	Terminal Block	N/A	N/A	N/A	N/A	N/A	N/A	N/A
	3		N/A	N/A	N/A	N/A	N/A	N/A	N/A
	1	Circuit Breaker	025-34424-000	024-31819-000	024-31820-000	024-31649-000	025-34424-000	024-31819-000	024-31820-000
	1	NF Disconnect Switch	N/A	N/A	N/A	N/A	N/A	N/A	N/A
22	1	Operator Mechanism	025-34417-000	025-34417-000	025-34417-000	025-34417-000	025-34417-000	025-34417-000	025-34417-000
23	1	Lug Kit	025-34481-000	025-34480-000	025-34480-000	025-34479-000	025-34481-000	025-34480-000	025-34480-000

S Recommended Spare Part

CONTROL PANEL AND POWER PANEL (CONT'D)

TABLE 7A (CONT'D) – CONTROL PANEL AND POWER PANEL COMPONENTS (SEE FIGS. 8-12, PAGES 20-24)

Item NO.	qty	Description	371-02571 -220	371-02571 -222	371-02571 -223	371-02571 -224	371-02571 -225	371-02571 -227	371-02571 -301
1	2	Contactora 600V (CR 1 & 2)	024-31635-000	024-31635-000	024-31635-000	024-31635-000	024-31635-000	024-31635-000	024-31635-000
2	2	Compressor Contactora	024-31817-000	024-31640-000	024-31640-000	024-31636-000	024-31813-000	024-31818-000	024-31636-000
	2		024-31818-000	024-31640-000	024-31640-000	024-31636-000	024-31813-000	024-31818-000	024-31602-000
3	4	Ground Lug, Cu	025-34455-000	025-34455-000	025-34455-000	025-34455-000	025-34455-000	025-34455-000	025-34455-000
4	8	Surge Suppressor	031-00808-000	031-00808-000	031-00808-000	031-00808-000	031-00808-000	031-00808-000	031-00808-000
5	2	Compressor Starter	025-34486-000	025-34488-000	025-34488-000	024-31816-000	024-31816-000	025-34489-000	024-31816-000
	2		025-34489-000	025-34488-000	025-34488-000	024-31816-000	024-31816-000	025-34489-000	025-34488-000
6	2	Auxilliary Contactora	024-31814-000	024-31814-000	024-31814-000	024-31814-000	024-31814-000	N/A	024-31814-000
7S	4	Fan Contactora	025-34448-000	025-34445-000	025-34445-000	025-34448-000	025-34448-000	025-34448-000	025-34445-000
8S	4	Fan Motor Starter	025-34450-000	025-34446-000	025-34446-000	025-34449-000	025-34449-000	025-34450-000	025-34446-000
9	2	Din Rail Slotted	025-29167-000	025-29167-000	025-29167-000	025-29167-000	025-29167-000	025-29167-000	025-29167-000
10	2	Ground Lug, Cu	025-34089-000	025-34089-000	025-34088-000	025-34085-000	025-34085-000	025-34089-000	025-34089-000
11S	1	Micro Board	031-02050-001	031-02050-001	031-02050-001	031-02050-001	031-02050-001	031-02050-001	031-02050-001
12S	1	Firmware EPROM	031-02049-001	031-02049-001	031-02049-001	031-02049-001	031-02049-001	031-02049-001	031-02049-001
13	1	Transformer 115/24V	025-30889-000	025-30889-000	025-30889-000	025-30889-000	025-30889-000	025-30889-000	025-30889-000
14	1	Fuse	025-34483-000	025-34483-000	025-34483-000	025-34483-000	025-34483-000	025-34483-000	025-34483-000
15	1	Fuseholder (Not Shown)	025-34484-000	025-34484-000	025-34484-000	025-34484-000	025-34484-000	025-34484-000	025-34484-000
16	1	Display	031-01110-000	031-01110-000	031-01110-000	031-01110-000	031-01110-000	031-01110-000	031-01110-000
17	1	Keypad	024-27838-000	024-27838-000	024-27838-000	024-27838-000	024-27838-000	024-27838-000	024-27838-000
18	1	Switch, On/Off	024-25517-000	024-25517-000	024-25517-000	024-25517-000	024-25517-000	024-25517-000	024-25517-000
19	1	Ribbon Cable	031-01109-211	031-01109-211	031-01109-211	031-01109-211	031-01109-211	031-01109-211	031-01109-211
20	4	Terminal Block	025-34447-000	025-34447-000	025-34447-000	025-34447-000	025-34447-000	025-34447-000	025-34447-000
21	3	Terminal Block	N/A	N/A	N/A	N/A	N/A	N/A	N/A
	3		N/A	N/A	N/A	N/A	N/A	N/A	N/A
	1	Circuit Breaker	024-31649-000	025-34425-000	025-34424-000	024-31819-000	024-31581-000	024-31649-000	024-25564-000
	1	NF Disconnect Switch	N/A	N/A	N/A	N/A	N/A	N/A	N/A
22	1	Operator Mechanism	025-34417-000	025-34413-000	025-34417-000	025-34417-000	025-34417-000	025-34417-000	025-34417-000
23	1	Lug Kit	025-34479-000	025-34414-000	025-34481-000	025-34480-000	025-34480-000	025-34479-000	025-34481-000

S Recommended Spare Part

CONTROL PANEL AND POWER PANEL (CONT'D)

TABLE 7A (CONT'D) – CONTROL PANEL AND POWER PANEL COMPONENTS (SEE FIGS. 8-12, PAGES 20-24)

Item NO.	qty	Description	371-02571 -303	371-02571 -304	371-02571 -306	371-02571 -308	371-02571 -310	371-02571 -311	371-02571 -313
1	2	Contactor 600V (CR 1 & 2)	024-31635-000	024-31635-000	024-31635-000	024-31635-000	024-31635-000	024-31635-000	024-31635-000
2	2	Compressor Contactor	024-31818-000	024-31817-000	024-31830-000	024-31602-000	024-31813-000	024-31818-000	024-31817-000
	2		024-31813-000	024-31818-000	024-31817-000	024-31602-000	024-31813-000	024-31818-000	024-31817-000
3	4	Ground Lug, Cu	025-34455-000	025-34455-000	025-34455-000	025-34455-000	025-34455-000	025-34455-000	025-34455-000
4	8	Surge Suppressor	031-00808-000	031-00808-000	031-00808-000	031-00808-000	031-00808-000	031-00808-000	031-00808-000
5	2	Compressor Starter	025-34488-000	025-34453-000	024-31859-000	025-34488-000	024-31816-000	025-34489-000	025-34486-000
	2		024-31816-000	025-34489-000	025-34486-000	025-34488-000	024-31816-000	025-34489-000	025-34486-000
6	2	Auxilliary Contactor	024-31814-000	N/A	N/A	024-31814-000	024-31814-000	N/A	N/A
7S	4	Fan Contactor	025-34448-000	025-34448-000	025-34448-000	025-34445-000	025-34448-000	025-34448-000	025-34448-000
8S	4	Fan Motor Starter	025-34449-000	025-34449-000	025-34450-000	025-34446-000	025-34449-000	025-34449-000	025-34450-000
9	2	Din Rail Slotted	025-29167-000	025-29167-000	025-29167-000	025-29167-000	025-29167-000	025-29167-000	025-29167-000
10	2	Ground Lug, Cu	025-34085-000	025-34088-000	025-34088-000	025-34089-000	025-34085-000	025-34085-000	025-34089-000
11S	1	Micro Board	031-02050-001	031-02050-001	031-02050-001	031-02050-001	031-02050-001	031-02050-001	031-02050-001
12S	1	Firmware EPROM	031-02049-001	031-02049-001	031-02049-001	031-02049-001	031-02049-001	031-02049-001	031-02049-001
13	1	Transformer 115/24V	025-30889-000	025-30889-000	025-30889-000	025-30889-000	025-30889-000	025-30889-000	025-30889-000
14	1	Fuse	025-34483-000	025-34483-000	025-34483-000	025-34483-000	025-34483-000	025-34483-000	025-34483-000
15	1	Fuseholder (Not Shown)	025-34484-000	025-34484-000	025-34484-000	025-34484-000	025-34484-000	025-34484-000	025-34484-000
16	1	Display	031-01110-000	031-01110-000	031-01110-000	031-01110-000	031-01110-000	031-01110-000	031-01110-000
17	1	Keypad	024-27838-000	024-27838-000	024-27838-000	024-27838-000	024-27838-000	024-27838-000	024-27838-000
18	1	Switch, On/Off	024-25517-000	024-25517-000	024-25517-000	024-25517-000	024-25517-000	024-25517-000	024-25517-000
19	1	Ribbon Cable	031-01109-211	031-01109-211	031-01109-211	031-01109-211	031-01109-211	031-01109-211	031-01109-211
20	4	Terminal Block	025-34447-000	025-34447-000	025-34447-000	025-34447-000	025-34447-000	025-34447-000	025-34447-000
21	3	Terminal Block	N/A	N/A	N/A	N/A	N/A	N/A	N/A
	3		N/A	N/A	N/A	N/A	N/A	N/A	N/A
	1	Circuit Breaker	N/A	N/A	N/A	N/A	N/A	N/A	N/A
	1	NF Disconnect Switch	024-31870-000	024-31888-000	024-31888-000	024-25564-000	024-31870-000	024-31870-000	024-31888-000
22	1	Operator Mechanism	025-34417-000	025-34417-000	025-34417-000	025-34417-000	025-34417-000	025-34417-000	025-34417-000
23	1	Lug Kit	025-34480-000	025-34479-000	025-34479-000	025-34481-000	025-34480-000	025-34480-000	025-34479-000

S Recommended Spare Part

CONTROL PANEL AND POWER PANEL (CONT'D)

TABLE 7A (CONT'D) – CONTROL PANEL AND POWER PANEL COMPONENTS (SEE FIGS. 8-12, PAGES 20-24)

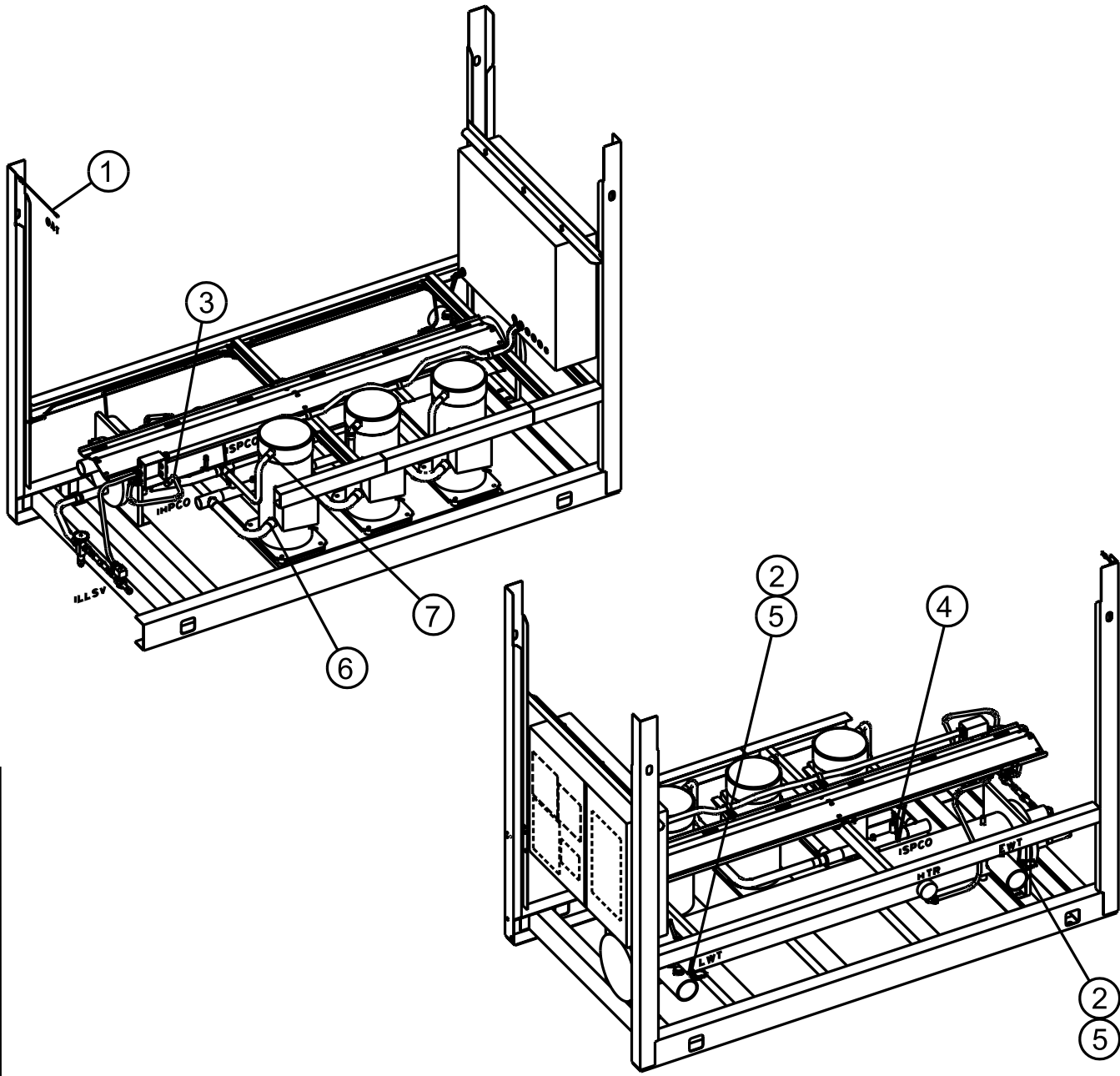
Item NO.	qty	Description	371-02571 -315	371-02571 -316	371-02571 -317	371-02571 -320	371-02571 -322	371-02571 -324	371-02571 -327
1	2	Contactora 600V (CR 1 & 2)	024-31635-000	024-31635-000	024-31635-000	024-31635-000	024-31635-000	024-31635-000	024-31635-000
2	2	Compressor Contactora	024-31602-000	024-31602-000	024-31813-000	024-31817-000	024-31640-000	024-31636-000	024-31818-000
	2		024-31640-000	024-31640-000	024-31636-000	024-31818-000	024-31640-000	024-31636-000	024-31818-000
3	4	Ground Lug, Cu	025-34455-000	025-34455-000	025-34455-000	025-34455-000	025-34455-000	025-34455-000	025-34455-000
4	8	Surge Suppressor	031-00808-000	031-00808-000	031-00808-000	031-00808-000	031-00808-000	031-00808-000	031-00808-000
5	2	Compressor Starter	025-34488-000	025-34488-000	024-31816-000	025-34486-000	025-34488-000	024-31816-000	025-34489-000
	2		025-34488-000	025-34488-000	024-31816-000	025-34489-000	025-34488-000	024-31816-000	025-34489-000
6	2	Auxilliary Contactora	024-31814-000	N/A	024-31814-000	N/A	024-31814-000	024-31814-000	N/A
7S	4	Fan Contactora	025-34445-000	025-34445-000	025-34448-000	025-34448-000	025-34445-000	025-34448-000	025-34448-000
8S	4	Fan Motor Starter	025-34446-000	025-34446-000	025-34449-000	025-34450-000	025-34446-000	025-34449-000	025-34450-000
9	2	Din Rail Slotted	025-29167-000	025-29167-000	025-29167-000	025-29167-000	025-29167-000	025-29167-000	025-29167-000
10	2	Ground Lug, Cu	025-34089-000	025-34089-000	025-34085-000	025-34089-000	025-34089-000	025-34085-000	025-34085-000
11S	1	Micro Board	031-02050-001	031-02050-001	031-02050-001	031-02050-001	031-02050-001	031-02050-001	031-02050-001
12S	1	Firmware EPROM	031-02049-001	031-02049-001	031-02049-001	031-02049-001	031-02049-001	031-02049-001	031-02049-001
13	1	Transformer 115/24V	025-30889-000	025-30889-000	025-30889-000	025-30889-000	025-30889-000	025-30889-000	025-30889-000
14	1	Fuse	025-34483-000	025-34483-000	025-34483-000	025-34483-000	025-34483-000	025-34483-000	025-34483-000
15	1	Fuseholder (Not Shown)	025-34484-000	025-34484-000	025-34484-000	025-34484-000	025-34484-000	025-34484-000	025-34484-000
16	1	Display	031-01110-000	031-01110-000	031-01110-000	031-01110-000	031-01110-000	031-01110-000	031-01110-000
17	1	Keypad	024-27838-000	024-27838-000	024-27838-000	024-27838-000	024-27838-000	024-27838-000	024-27838-000
18	1	Switch, On/Off	024-25517-000	024-25517-000	024-25517-000	024-25517-000	024-25517-000	024-25517-000	024-25517-000
19	1	Ribbon Cable	031-01109-211	031-01109-211	031-01109-211	031-01109-211	031-01109-211	031-01109-211	031-01109-211
20	4	Terminal Block	025-34447-000	025-34447-000	025-34447-000	025-34447-000	025-34447-000	025-34447-000	025-34447-000
21	3	Terminal Block	N/A	N/A	N/A	N/A	N/A	N/A	N/A
	3		N/A	N/A	N/A	N/A	N/A	N/A	N/A
	1	Circuit Breaker	N/A	N/A	N/A	N/A	N/A	N/A	N/A
	1	NF Disconnect Switch	024-25563-000	024-25564-000	024-31870-000	024-31888-000	024-25563-000	024-25565-000	024-25565-000
22	1	Operator Mechanism	025-34413-000	025-34417-000	025-34417-000	025-34417-000	025-34413-000	025-34417-000	025-34417-000
23	1	Lug Kit	025-34414-000	024-31879-000	024-31879-000	024-31879-000	024-31879-000	024-31879-000	024-31879-000

S Recommended Spare Part

CONTROL PANEL AND POWER PANEL (CONT'D)

This page intentionally left blank

TRANSDUCERS, PRESSURE CUTOUTS AND TEMP SENSORS



LD05164

fig. 13 – TRANSDUCERS, PRESSURE CUTOUTS AND TEMP SENSORS (REF. TABLE 8, PAGE 49)

Control & Power Panel

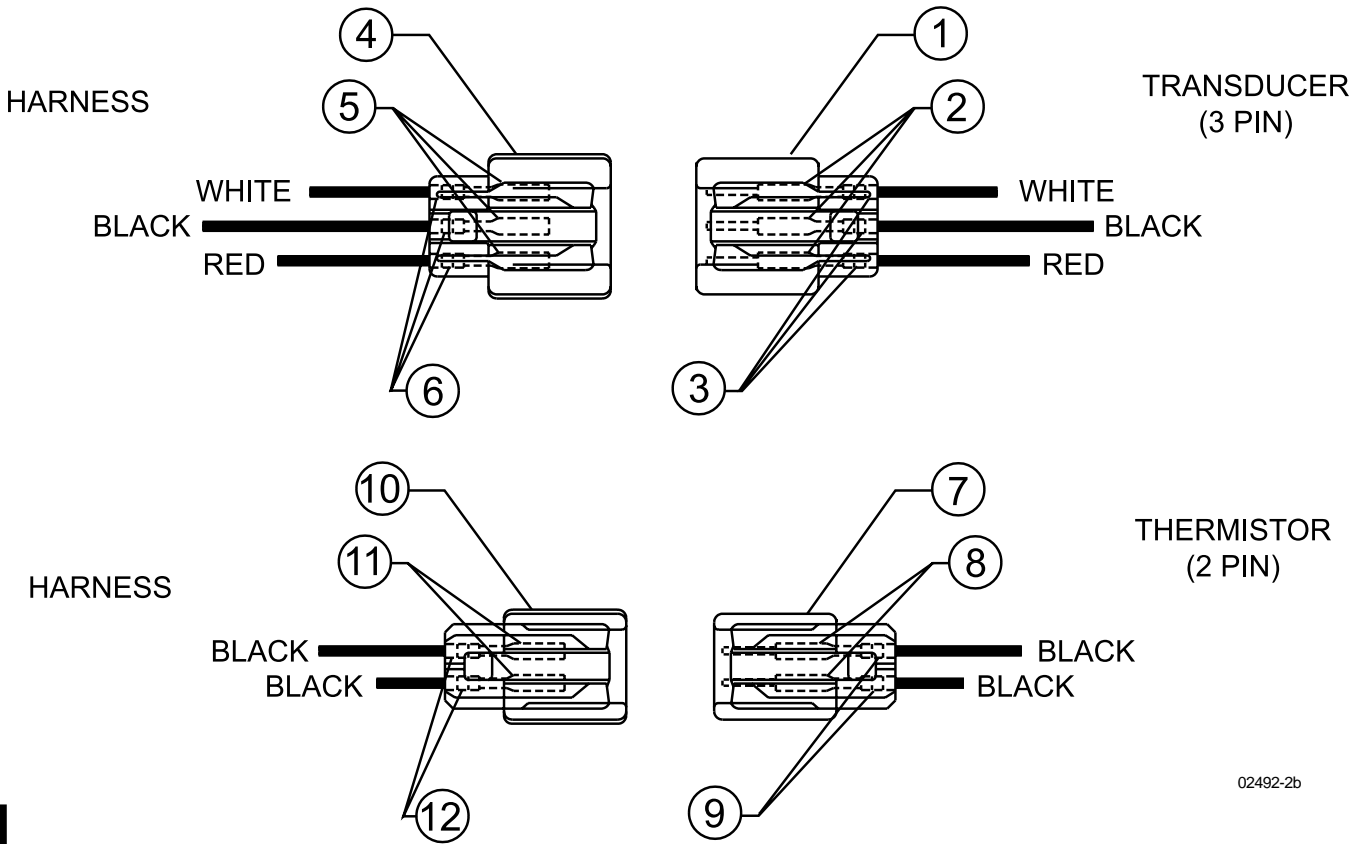
TRANSDUCERS, PRESSURE CUTOUTS AND TEMP SENSORS (CONT'D)

TABLE 8 – TRANSDUCERS, PRESSURE CUTOUTS AND TEMP SENSORS (SEE FIG. 13, PAGE 48)

ITEM NUMBER	QUANTITY	SYSTEM	DESCRIPTION	VOLTAGE CODE	PART NUMBER
1 ^s	1	Unit	Sensor, Outside Air Temp.	ALL	025-28663-001
2 ^s	1	1 ea.	Sensor, Water Temp. (EWT, LWT)	ALL	025-29964-000
3 ^s	1 per system	1 and 2	Switch, High Pressure Cutout	ALL	025-28985-002
4 ^s	1 per system	1 and 2	Switch, Low Pressure Cutout	ALL	025-33707-000
5	1	Unit	Compound, Heat Conductive	ALL	013-00898-000
6	1 per system	Unit	Transducer, Suct. Press. (0-200psi)	ALL	025-29583-000
7	1 per system	Unit	Transducer, Disch. Press. (0-400psi)	ALL	025-29139-001

^s Recommended Spare Part

TRANSDUCER AND THERMISTOR WIRE HARNESS CONNECTORS - FIELD REPLACEMENT PART NUMBERS



02492-2b

FIG. 14 – TRANSDUCER AND THERMISTOR WIRE HARNESS CONNECTORS - FIELD REPLACEMENT PART NUMBERS (REF. TABLE 9, PAGE 51)

TRANSDUCER AND THERMISTOR WIRE HARNESS CONNECTORS - FIELD REPLACEMENT PART NUMBERS (CONT'D)

TABLE 9 – TRANSDUCER AND THERMISTOR WIRE HARNESS CONNECTORS -
FIELD REPLACEMENT PART NUMBERS (SEE FIG. 14, PAGE 50)

ITEM NO.	LOCATION	DESCRIPTION	PINS	PART NUMBER
1	Transducer	Plug Connector	3 Pin End	025-28953-000
2		Contact Pins		025-28949-000
3		Rubber Collar		025-28950-000
4	Wire Harness	Plug Connector	3 Pin End	025-28954-000
5		Contact Pins		025-28952-000
6		Rubber Collar		025-28950-000
7	Thermistor	Plug Connector	2 Pin End	025-28948-000
8		Contact Pins		025-28949-000
9		Rubber Collar		025-28950-000
10	Wire Harness	Plug Connector	2 Pin End	025-28951-000
11		Contact Pins		025-28952-000
12		Rubber Collar		025-28950-000

TABLE 10 – FIELD INSTALLED OPTIONS TABLE

MODEL NUMBER YCAL	VIBRATION ISOLATORS SPRING 1" DEFLEC ALUMINUM* & BLK FIN	VIBRATION ISOLATORS SPRING 2" (SEISMIC) ALUMINUM* & BLK FIN	VIBRATION ISOLATOR PAD 1/2" DEFLEC NEOPRENE	VIBRATION ISOLATORS SPRING 1" DEFLEC COPPER*	VIBRATION ISOLATORS SPRING 2" (SEISMIC) COPPER*	VIBRATION ISOLATOR PAD 1/2" DEFLEC NEOPRENE	HOT GAS BY-PASS SOLENOID VALVE W/ HARNES**	BAS/EMS TEMPERATURE RESET / OFFSET	REMOTE CONTROL PANEL 60HZ	DISCHARGE PRESSURE TRANSDUCER KIT***	SUCTION PRESSURE TRANSDUCER KIT****
MODEL #	029-22779	029-222779	029-22780	029-22779	029-22779	029-22780	375-31851	375-30914	371-02485	371-02458	371-02457
0014	-001	-007	-001	-001	-007	-001	-109	-000	-104	-001	-001
0020	-001	-007	-001	-001	-007	-001	-101	-000	-104	-001	-001
0024	-001	-007	-001	-001	-007	-001	-102	-000	-104	-001	-001
0030	-001	-008	-001	-002	-017	-002	-102	-000	-104	-001	-001
0034	-014	-017	-002	-014	-017	-002	-103	-000	-104	-001	-001
0040	-004	-010	-003	-004	-011	-003	-104	-000	-104	-002	-002
0044	-004	-010	-003	-004	-011	-004	-106	-000	-104	-002	-002
0050	-004	-010	-003	-004	-011	-004	-106	-000	-104	-002	-002
0060	-004	-011	-003	-004	-011	-004	-106	-000	-104	-002	-002
0064	-004	-011	-004	-005	-013	-004	-107	-000	-104	-002	N/A
0070	-005	-012	-004	-006	-019	-004	-107	-000	-104	-002	N/A
0074	-005	-012	-004	-006	-019	-005	-108	-000	-104	-002	N/A
0080	-006	-013	-004	-016	-020	-005	-108	-000	-104	-002	N/A

* Note: Condenser Coil Fin Material.

** Note: Hot Gas By-Pass Solenoid Valve Only: 025-34133-000

*** Note: Discharge Pressure Transducer Only: 025-29139-001

**** Note: Suction Pressure Transducer Only: 025-29583-000

YCAL CHILLER OPTIONS – KITS

TABLE 10 (CONT'D) – FIELD INSTALLED OPTIONS TABLE

MODEL NUMBER YCAL	REFERENCE ONLY R-22 CHARGE LBS. CKT1-CKT2	MOTOR CURRENT MODULE KIT	OVERLOAD KIT (OPTIONAL)	LOW AMBIENT KIT	HIGH AMBIENT KIT	WELD FLANGE KIT	VICTAULIC FLANGE KIT	CHICAGO RELIEF VALVE	SEQUENCE CONTROL / AUTOMATIC LEAD TRANSFER	FLOW SWITCH	DIFFERENTIAL PRESSURE SWITCH
MODEL #		371-02764	075-33482	375-30910	375-		023-	022-	371-02558	024-26116	025-30919
0014	32 lb.-N/A	-000	-002,003&004	-102*	28556	375-30969	19047-000	08863-000	-000	-000	-000
0020	38 lb.-N/A	-000	-007,008&003	-102*	28556	375-30969	19047-000	08863-000	-000	-000	-000
0024	58 lb.-N/A	-000	N/A	-102*	28553	375-30969	19047-000	08863-000	-000	-000	-000
0030	65 lb.-N/A	-000	N/A	-102*	28553	375-30969	19047-000	08863-000	-000	-000	-000
0034	69 lb.-N/A	-000	N/A	-102*	28553	366-93920	19048-000	08863-000	-000	-000	-000
0040	45 lb.-45 lb.	-001	N/A	-104*	31802	366-93920	19048-000	08863-000	-000	-000	-000
0044	54 lb.-54 lb.	-001	N/A	-104*	31802	366-93920	19048-000	08863-000	-000	-000	-000
0050	54 lb.-54 lb.	-001	N/A	-104*	31802	366-93920	19048-000	08863-000	-000	-000	-000
0060	60 lb.-54 lb.	-001	N/A	-104*	31802	366-93920	19048-000	08863-000	-000	-000	-000
0064	72 lb.-72 lb.	-001	N/A	-104*	28549	366-93920	19048-000	08863-000	-000	-000	-000
0070	75 lb.-62 lb.	-001	N/A	-104*	28549	366-93921	19049-000	10071-000	-000	-000	-000
0074	75 lb.-75 lb.	-001	N/A	-104*	28549	366-93921	19049-000	10071-000	-000	-000	-000
0080	175 lb.-	-001	N/A	-104*	28549	366-93921	19049-000	10071-000	-000	-000	-000

* Note: Discharge Pressure Transducer & Readout Kit is required to complete Low Ambient Kits.

TABLE 10A – CONTROL TRANSFORMER KIT

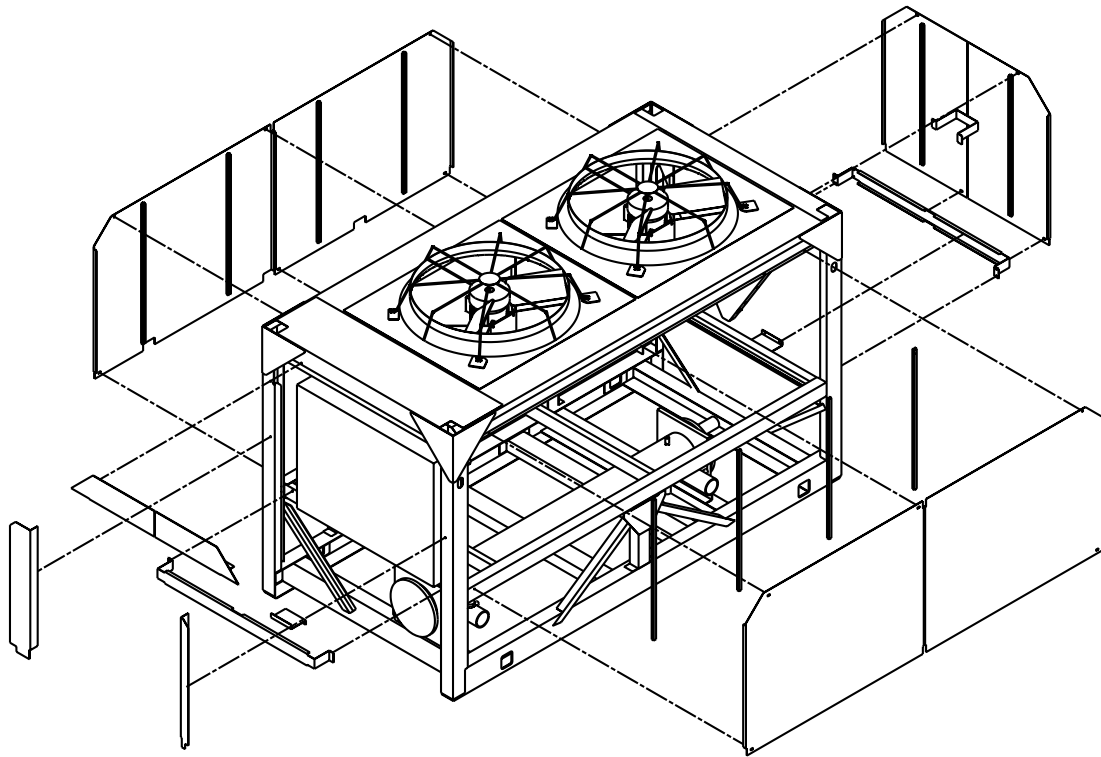
MODEL NUMBERS	VOLTAGE	DESCRIPTION	PART NUMBER
YCAL0014-YCUL0080	-17	KIT, CONTROL TRANSFORMER	375-30909-101
	-28		375-30909-102
	-40		375-30909-103
	-46		375-30909-104
	-58		375-30909-106

ENCLOSURE KIT OPTIONS

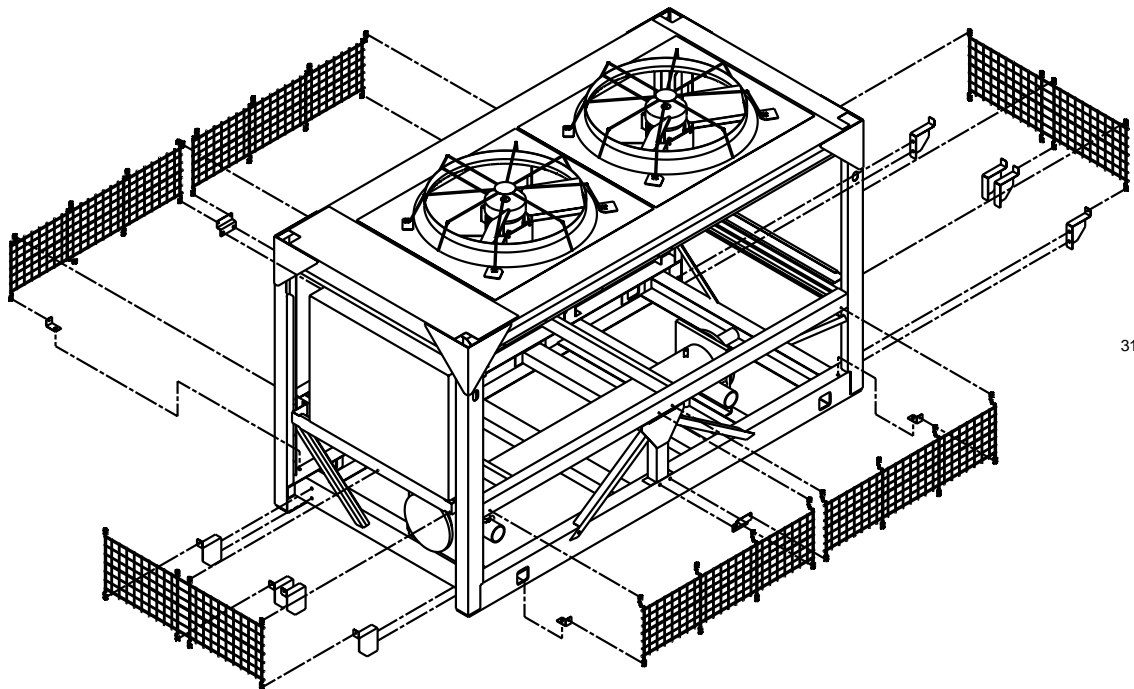
TABLE 11 – ENCLOSURE KIT OPTIONS (Top and Bottom Sections)

MODEL NUMBER YCAL-	WIRE ENCLOSURE	LOUVERED ENCLOSURE	WIRE/ LOUVERED ENCLOSURE	LOUVERED ENCLOSURE CONDENSER ONLY
0014 (Top)	375-31869-000	375-31867-162	375-31867-162	375-31867-162
0014 (Bottom)	375-31870-000	375-31868-163	375-31870-000	N/A
0020 (Top)	375-31869-000	375-31867-162	375-31867-162	375-31867-162
0020 (Bottom)	375-31870-000	375-31868-163	375-31870-000	N/A
0024 (Top)	375-31834-000	375-31832-164	375-31832-164	375-31832-164
0024 (Bottom)	375-31835-000	375-31833-163	375-31835-000	N/A
0030 (Top)	375-31834-000	375-31832-164	375-31832-164	375-31832-164
0030 (Bottom)	375-31835-000	375-31833-163	375-31835-000	N/A
0034 (Top)	375-31834-000	375-31832-164	375-31832-164	375-31832-164
0034 (Bottom)	375-31835-000	375-31833-163	375-31835-000	N/A
0040 (Top)	375-31297-000	375-30996-162	375-30996-162	375-30996-162
0040 (Bottom)	375-31298-000	375-31299-163	375-31298-000	N/A
0044 (Top)	375-31297-000	375-30996-162	375-30996-162	375-30996-162
0044 (Bottom)	375-31298-000	375-31299-163	375-31298-000	N/A
0050 (Top)	375-31297-000	375-30996-162	375-30996-162	375-30996-162
0050 (Bottom)	375-31298-000	375-31299-163	375-31298-000	N/A
0060 (Top)	375-31297-000	375-30996-162	375-30996-162	375-30996-162
0060 (Bottom)	375-31298-000	375-31299-163	375-31298-000	N/A
0064 (Top)	375-31808-000	375-31806-162	375-31806-162	375-31806-162
0064 (Bottom)	375-31809-000	375-31807-163	375-31809-000	N/A
0070 (Top)	375-31808-000	375-31806-162	375-31806-162	375-31806-162
0070 (Bottom)	375-31809-000	375-31807-163	375-31809-000	N/A
0074 (Top)	375-31808-000	375-31806-162	375-31806-162	375-31806-162
0074 (Bottom)	375-31809-000	375-31807-163	375-31809-000	N/A
0080 (Top)	375-31808-000	375-31806-162	375-31806-162	375-31806-162
0080 (Bottom)	375-31809-000	375-31807-163	375-31809-000	N/A

ENCLOSURE KIT OPTIONS (CONT'D)



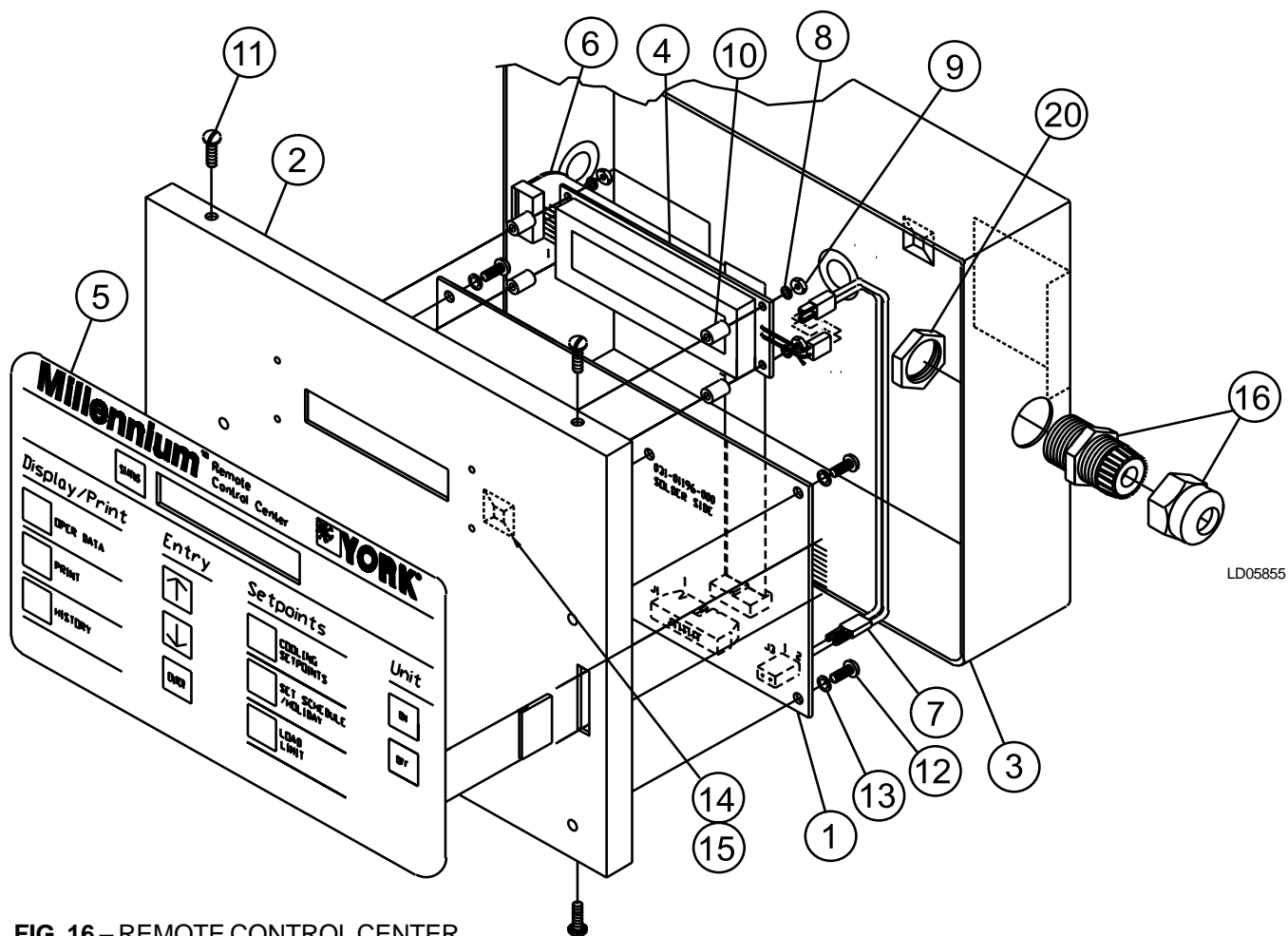
Louvered Enclosure Kit - Top Section



Wire Enclosure Kit - Bottom Section

FIG. 14 – ENCLOSURE KIT OPTIONS (TOP AND BOTTOM SECTIONS) - YCAL0014 & YCAL0020 SHOWN (REF. TABLE 10, PAGE 50)

REMOTE CONTROL CENTER



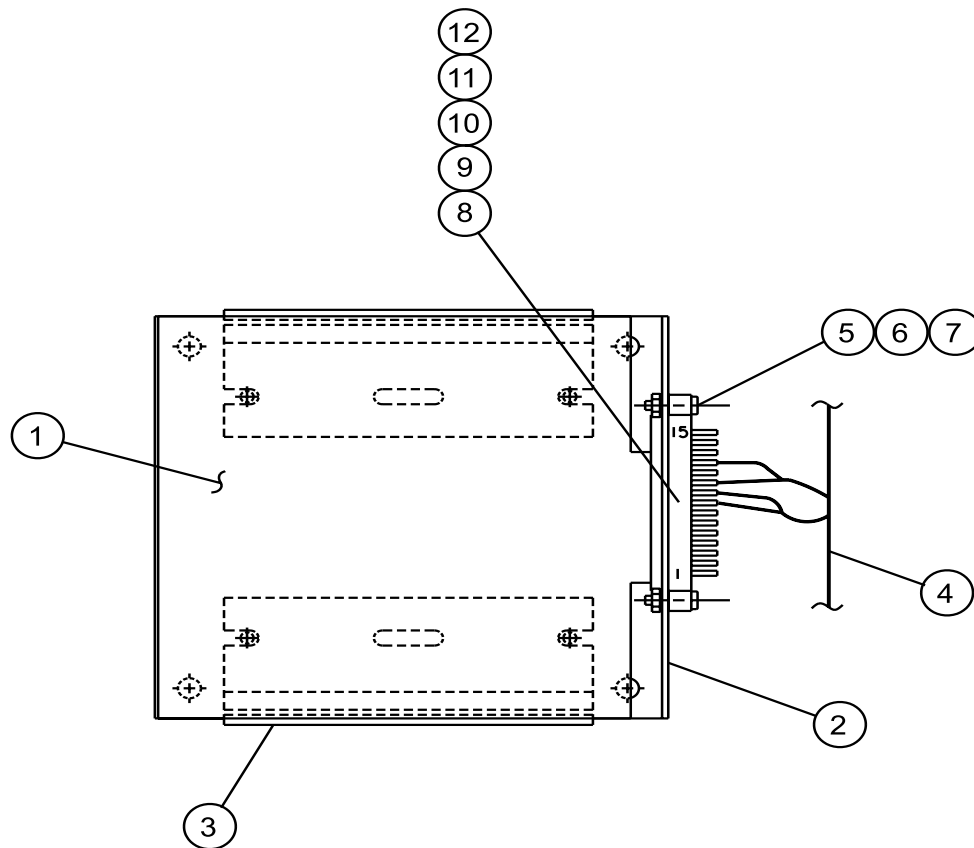
LD05855

FIG. 16 – REMOTE CONTROL CENTER

TABLE 12 – REMOTE CONTROL CENTER PARTS

371-02485-104 (60 HZ)			
REF. NUMBER	QUANTITY	DESCRIPTION	PART NUMBER
1	1	CONTROL, MICROBOARD	031-01196-000
2	1	COVER, REMOTE CONTROL	371-02485-311
3	1	BASE, REMOTE CONTROL	071-02485-320
4	1	DISPLAY, LCD	031-01110-000
5	1	SWITCH, KEYPAD	024-30930-000
6	1	RIBBON CABLE	071-01289-211
7	1	WIRE CABLE	071-01289-212
10	4	SPACER, NYLON 1/4 OD X 7/16 LG.	021-17575-000
11	1	TRANSFORMER	025-29917-002
14	3	CABLE TIE MOUNT	025-25155-000
15	1	EPROM	031-02016-003
16	1	CABLE FITTING	025-05701-000
17	2	INSULATOR, RECIPAK, ROOFTOP	071-01730-000
18	2	MODULE, LAN TRANSIENT PROTECTION (LTP)	031-01586-000
19	1	INSTALLATION INSTRUCTIONS	071-01289-002
20	1	NUT, LOCKING, HEYCO-3232	025-31732-000
21	1	OPERATOR'S MANUAL	150.62-NM1

REMOTE CURRENT/TEMPERATURE RESET PARTS BREAKDOWN



LD05256

FIG. 17 – REMOTE CURRENT/TEMPERATURE RESET COMPONENTS

TABLE 13 – REMOTE CURRENT OR TEMPERATURE RESET KIT NUMBER 375-90914-000

REF. NUMBER	QUANTITY	DESCRIPTION	PART NUMBER
1	1	CONTROL, REMOTE CURRENT/TEMP	031-00814-000
2	1	BRACKET, REMOTE CURRENT/TEMP RESET	371-01232-361
3	1	TRACK, SNAP	071-01232-363
4	1	WIRING, REMOTE CURRENT/TEMP RESET	571-02492-231*
5	2	SCREW, MACHINE PAN HEAD #4	021-17594-000
6	2	NUT, HEX MACH SCREW #4 – 40 UNC-2B	021-10056-000
7	2	LOCKWASHER, HEL. SPG. #4 REG.	021-17576-000

* refer to Table 14

TABLE 14 – REMOTE RESET WIRING

REF. NUMBER	QUANTITY	DESCRIPTION	PART NUMBER
8	2	CONT SOC AWG WIRE SIZE 20	025-19674-000
9	2	TERMINAL PUSH ON STRAIGHT	025-06642-000
10	4	TUBING HEAT SHRINKABLE 1/8 ID	025-29632-000
11	1	HGS CONNECTOR ELECTRICAL PLUG	025-32564-000*
12	1	CONNECTOR EDGE, 15 POSITION, 0.125	025-29631-000

* Was P/N 025-21137-000 prior to Spring 1999.

RECOMMENDED SPARE PARTS
York Model YCAL Style A Air Cooled Liquid Chillers
Suggested Spare Parts List for Critical Duty Applications

TABLE 15 – RECOMMENDED SPARE PARTS - YCAL CHILLERS (60 Hz)

PAGE REF. & ITEM NUMBER	DESCRIPTION	MODEL NUMBER YCAL	PART NUMBER
Page 10, Item 1	Fan Motor	All	See Table 4
Page 10, Item 2	Fan Blade (Standard)	All	See Table 4
Page 10, Item 2	Fan Blade (Low Noise)	All	See Table 4
Page 14 & 15, Item 1	Valve, Thermal Expansion (Cooler)	All	See Table 5
Page 14 & 15, Item 3	Core, Dehydrator	All	See Table 5
Page 14 & 15, Item 4	Valve, Solenoid, Liquid Line	All	See Table 5
Page 17, Item Oil	Oil, Compressor	All	--
Page 27-46, Item 7	Contactora, Fan	All	See Table 7
Page 27-46, Item 8	Overload, Manual Fan Motor	All	See Table 7
Page 27-46, Item 11	Micro Board	All	See Table 7
Page 27-46, Item 12	EPR0M	All	See Table 7
Page 49, Item 1	Sensor, Outside Air Temp.	All	025-28663-001
Page 49, Item 2	Sensor, Water Temp.	All	025-29964-000
Page 49, Item 3	High Pressure Cutout Switch	All	025-28985-002
Page 49, Item 4	Low Pressure Cutout Switch	0014-0060	025-33707-000
Page 52, Note	Valve, Solenoid, Hot Gas By-Pass	All	025-34133-000
Page 52, Note	Transducer, Discharge Pressure	All	025-29139-001
Page 52, Note	Transducer, Suction Pressure	All	025-29583-000

All requests for parts should be made to your local YORK Sales
and Service Center shown on inside back cover.

YORK SERVICE OFFICES (NORTH AMERICA)

ALABAMA

Birmingham
YORK International Corp.
(205) 987-0458

ARIZONA

Phoenix
YORK International Corp.
(602) 220-9400

CALIFORNIA

Los Angeles
YORK International Corp.
(714) 897-0997
San Diego
YORK International Corp.
(858) 268-0770
San Francisco
YORK International Corp.
(925) 426-1166

COLORADO

Denver
YORK International Corp.
(303) 649-1500

CONNECTICUT

Danbury
YORK International Corp.
(203) 730-8100

FLORIDA

Miami
YORK International Corp.
(954) 389-9675
Tampa
YORK International Corp.
(813) 621-1323
Orlando
YORK International Corp.
(407) 444-2261

GEORGIA

Atlanta
YORK International Corp.
(678) 474-9237

HAWAII

Honolulu
YORK International Corp.
(808) 596-0761

ILLINOIS

Chicago
YORK International Corp.
(847) 520-1910

INDIANA

Indianapolis
YORK International Corp.
(317) 595-3050

KENTUCKY

Louisville
YORK International Corp.
(502) 499-6020

LOUISIANA

New Orleans
YORK International Corp.
(504) 464-6941

MARYLAND

Baltimore/Washington
YORK International Corp.
(410) 720-6383

MASSACHUSETTS

Boston
YORK International Corp.
(781) 769-7950

MICHIGAN

Detroit
YORK International Corp.
(248) 689-7277

MINNESOTA

Minneapolis
YORK International Corp.
(763) 780-4446

MISSOURI

Kansas City
YORK International Corp.
(816) 221-9675
St. Louis
YORK International Corp.
(314) 770-0909

NEBRASKA

Omaha
YORK International Corp.
(402) 593-0632

NEVADA

Las Vegas
YORK International Corp.
(702) 873-2200

NEW JERSEY

Newark
YORK International Corp.
(732) 225-0606

NEW MEXICO

Albuquerque
YORK International Corp.
(505) 797-4956

NEW YORK

Albany
YORK International Corp.
(518) 464-6500
Buffalo
YORK International Corp.
(716) 633-2172
New York
YORK International Corp.
(212) 843-1602

NORTH CAROLINA

Charlotte
YORK International Corp.
(704) 598-0000
Greensboro
YORK International Corp.
(336) 299-9675
Raleigh
YORK International Corp.
(919) 431-9675

OHIO

Cincinnati
YORK International Corp.
(513) 489-8871
Cleveland
YORK International Corp.
(216) 447-0696
Columbus
YORK International Corp.
(614) 841-5242

PENNSYLVANIA

Philadelphia
YORK International Corp.
(610) 640-2320
Pittsburgh
YORK International Corp.
(412) 364-6600
York (HQ)
YORK International Corp.
(717) 771-7890

SOUTH CAROLINA

Greenville
YORK International Corp.
(864) 627-9675

TENNESSEE

Kingsport
YORK International Corp.
(423) 349-2450
Nashville
YORK International Corp.
(615) 833-9675

TEXAS

Austin
YORK International Corp.
(512) 481-0220
Beaumont
YORK International Corp.
(409) 840-5256
Dallas
YORK International Corp.
(972) 241-1219
Houston
YORK International Corp.
(713) 782-5200
San Antonio
YORK International Corp.
(210) 496-6631

UTAH

Salt Lake City
YORK International Corp.
(801) 261-1200

VIRGINIA

Richmond
YORK International Corp.
(804) 359-2648

WASHINGTON

Seattle
YORK International Corp.
(425) 251-9145

CANADA

Ottawa, Ontario
(613) 596-9111
Toronto, Ontario
(905) 890-6812
Laval, Quebec
(514) 387-6000

YORK Applied Systems field office listing subject to change.
See us on the web at <http://www.york.com> for additional information.



P.O. Box 1592, York, Pennsylvania USA 17405-1592
Copyright © by York International Corporation 2002

Tele. 800-861-1001
www.york.com

Subject to change without notice. Printed in USA
ALL RIGHTS RESERVED

Form 150.62-RP1 (202)
Supersedes 150.62-RP1 (1001)