



BY JOHNSON CONTROLS

DX PRODUCT SERVICES SPECIAL REQUIREMENTS

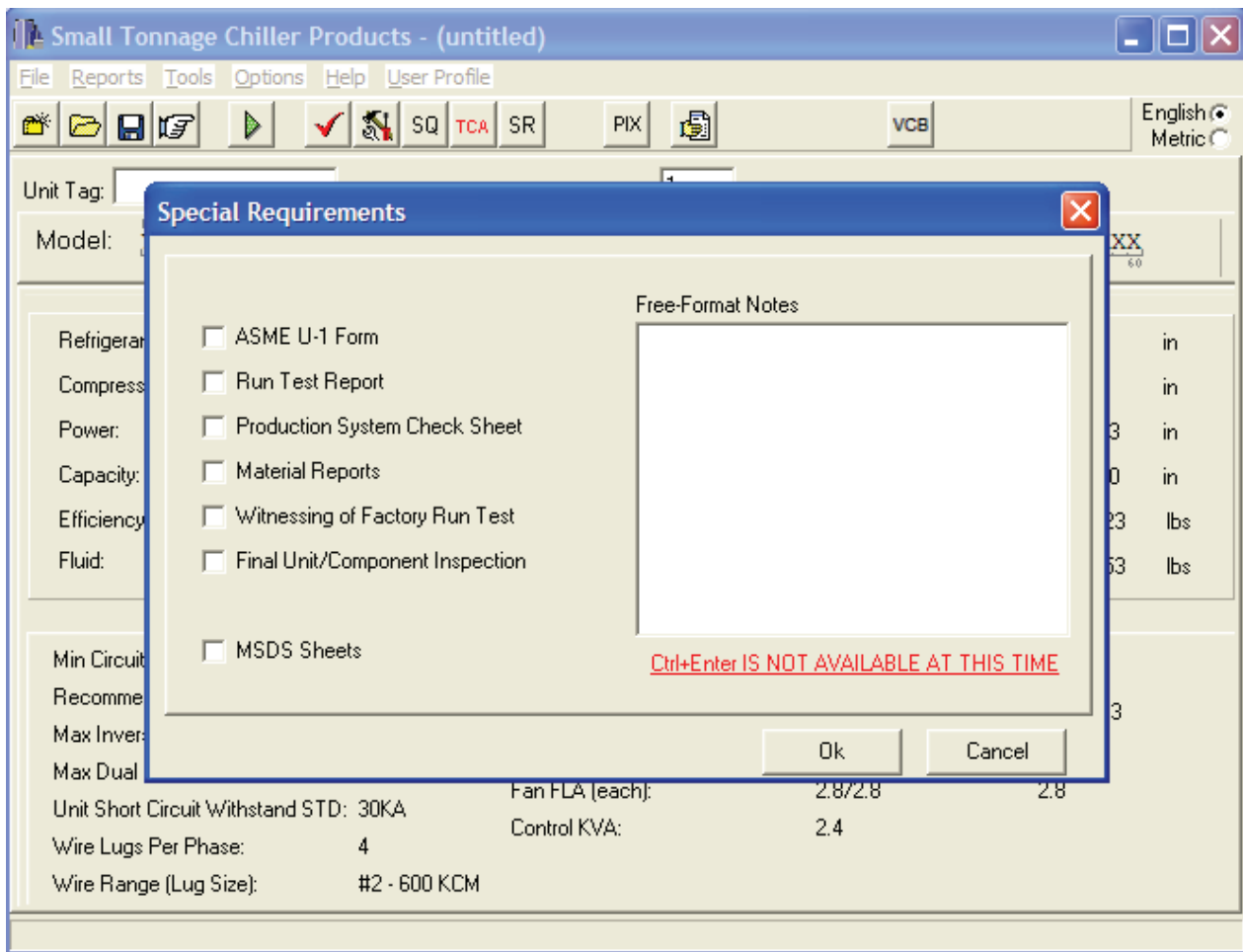
SPECIAL REQUIREMENTS

Supersedes: 150.00-P1 (1108)

Form 150.00-SR1 (909)

There have been increased requests for Special Requirements for DX Product Systems. The following information is provided to aid in understanding the Special Requirements offering. Refer to YORKWorks for pricing information.

This is intended for ASME designed and constructed DX chillers from Monterrey, Durango, San Antonio, and Basildon. Contact Basildon for other special code constructed DX chillers.



***Add +25% to the above pricing if the chiller has already been shipped from the factory. Also, a new sales order must be sent to York, PA to obtain any of the above documentation.**

+ Not available for stock units already built or split systems (e.g., YCR, YCU, or Remote DX Cooler systems).

See descriptions on page 2.

STANDARD DOCUMENTATION

A copy of Johnson Controls' standard QC documents will be provided after the unit shipment. The copy will be provided per the pricing included on the front for this sheet. These are not formal, signed documents, but merely a copy of our standard documents.

ASME U-1 – This is a copy of the paperwork that is sent to the National Board of Boiler & Pressure Vessel Inspectors.

Run Test Report – This is not a performance test, but an operational run test. The compressor systems are run at whatever the shop ambient & water test loop temperatures are at the time of the test. First, compressor #1 circuit is run to check that all of its components and controls are operating properly per the York Engineering Standard. This can take 10 to 20 minutes. The #1 compressor is turned off and the same is repeated for the remaining compressor circuits. A computer printout report is collected for each circuit and a copy of this report is placed in the control panel and the quality control files. The customer will be given a copy of these. *[This is not available on split-type systems (e.g., YCR, YCU, or Remote DX cooler systems.)]*.

Production System Check Sheet – A copy of York's standard internal QC Production Check Sheet document for the unit is provided after shipment. This follows the unit through its manufacture, production checks, and corresponding tests. It shows the operator sign-off for all the different steps of production.

Material Reports – These are copies of metal mill material sheets, which are provided after the unit ships.

WITNESSING THE FACTORY RUN TEST

This is for the privilege of witnessing the test and should not be encouraged. This can often lead to production delays and in scheduling the witnessing of the opera-

tional run test. This applies to units scheduled to be built and not for already built or shipped ex-factory. See the GUIDELINES below, which must be followed. *[This is not available on split-type systems (e.g., YCR, YCU, or Remote DX cooler systems.)]*.

FINAL UNIT OR SEPARATE COMPONENT INSPECTIONS

This price must be included for each inspection for each unit. See the GUIDELINES below, which must be followed.

GUIDELINES [FOR TEST WITNESSING OR INSPECTIONS]

Following these guidelines will result in a factory visit that will be professional, effective, and smooth for both customer and Johnson Controls.

1. You must personally track the schedule and notify the customer (with confirmation from Customer Service) two weeks prior to the witness test or inspection
2. You must coordinate the customer's visit and accompany him to the factory unless you obtain prior agreement from Customer Service.
3. The price does not include any provisions for travel, lodging, meals, etc. for the customer and you.
4. Customer pictures are NOT permitted unless you receive prior approval in writing form the General Manager of the production facility.
5. The run test or inspection will be performed only in accordance with our standard engineering or quality standards. (We will not revise our procedures to match what the customer thinks is the way it should be done. Also, we will not get into a discussion of either justifying or changing our standards to what the customer feels is the way it should be done).