



**eco<sup>2</sup>**  
**AIR COOLED SCREW LIQUID CHILLERS**  
**MODELS YCAS STYLE 'F'**

**WIRING DIAGRAM**

Supersedes 201.18-W7 (700)

Form 201.18-W9 (601)



Better ecology,  
Better economy.

**MODELS YCAS0685 THROUGH YCAS0965**  
**50Hz**



28971AR



## TABLE OF CONTENTS

Nomenclature .....	3
Electrical Data .....	4
60 Hz .....	4
50 Hz .....	6
Power Wiring Possibilities .....	10
Elementary Power 2 Wiring Diagrams .....	14
Fig. 1 - Elementary Diagram .....	14
Fig. 2 - Elementary Diagram .....	15
Standard Compressor Power Supplies .....	16
Fig. 3 - Across-The-Line Start .....	16
Fig. 4 - Wye-Delta Start .....	17
3 Wiring Diagrams .....	16
Fig. 5 - Elementary Diagram, Across-The-Line Start .....	18
Fig. 6 - Connection Diagram .....	20
Fig. 7 - Connection Diagram (continued) .....	22
Fig. 8 - Connection Diagram (continued) .....	23
Fig. 9 - Compressor Terminal Box .....	24
Fig. 10 - Compressor Terminal Box .....	25
DXST Direct Drive .....	26
Fig. 11 - Elementary Diagram, Detail A .....	26
Fig. 12 - Elementary Diagram, Detail B .....	27
Fig. 13 - Elementary Diagram, Detail C .....	28
Connection Diagram System Wiring .....	29
Control Power Transformer Kit (Optional) .....	31

# WARNING

**HIGH VOLTAGE**  
**is used in the operation of this equipment**  
**DEATH OR SERIOUS INJURY**  
**may result if personnel fail to observe precautions.**

Work on electronic equipment should not be undertaken unless the individual(s) has (have) been trained in the proper maintenance of the equipment and is (are) familiar with its potential hazards.

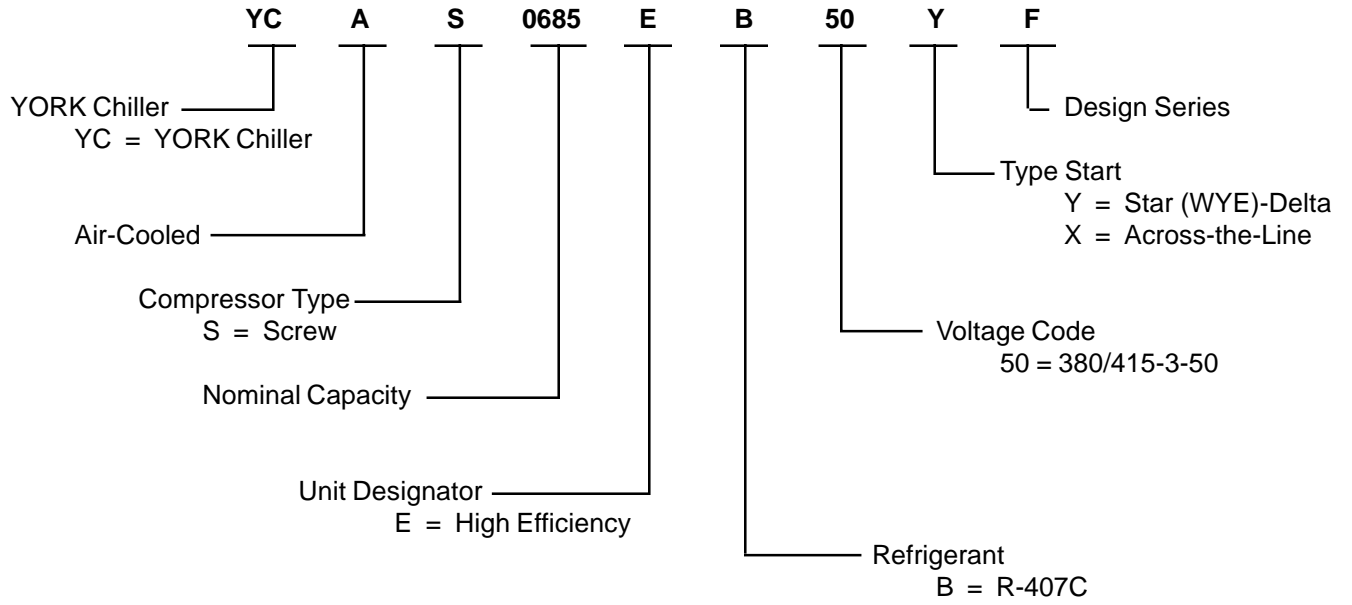
Shut off power supply to equipment before beginning work and follow lockout procedures. When working inside equipment with power off, take special care to discharge every capacitor likely to hold dangerous potential.

Be careful not to contact high voltage connections when installing or operating this equipment.

**LOW VOLTAGE**  
**DO NOT** be misled by the term "low voltage". Voltages as low as 50 volts  
may cause death.

# NOMENCLATURE

The Model Number denotes the following characteristics of the unit:



# ELECTRICAL DATA (50 Hz)

## MULTIPLE POINT POWER SUPPLY CONNECTION

(Two Field Provided Power Supply Circuits to the Chiller. Field Connections to Factory provided Terminal Block (Std) or Disconnects (Opt) in the Options Panel. Factory Wired Terminal Blocks or Individual System Circuit Breakers\* (opt<sup>10</sup>) in each of the two Motor Control Centers.)

Model YCAS	Volts	ELECTRICAL SUPPLY #1 FIELD SUPPLIED WIRING														
		Field Provided Power Supply				Factory Provided (Lugs) Wire Range <sup>7</sup>		Compressor #1			Compressor #3			Fan <sup>11, 12</sup> Data		
		MRA <sup>1</sup> (MCA)	Min NF Disc SW <sup>2,9</sup>	Over-current Protection <sup>13</sup>		* Standard Terminal block	Optional NF Disc. Switch	RLA	Y-Δ LRA	X-LRA	RLA	Y-Δ LRA	X-LRA	Qty	FLA (ea)	LRA (ea)
				Min. <sup>3, 5</sup>	Max. <sup>4, 6</sup>											
0685EB	380	367	400	400	500	(2) # 2 - 4/0	(2) 3/0 - 250	99	219	692	162	267	857	7	5.7	25
0775EB	380	367	400	400	450	(2) # 2 - 4/0	(2) 3/0 - 250	128	267	857	128	267	857	8	5.7	25
0835EB	380	410	400	450	500	(2) 1/0 - 300	(2) 250 - 500	163	267	857	128	267	857	8	5.7	25
0905EB	380	452	600	500	500	(2) 1/0 - 300	(2) 250 - 500	163	267	857	163	267	857	8	5.7	25
0965EB	380	442	600	450	500	(2) 1/0 - 300	(2) 250 - 500	155	267	857	148	267	857	11	5.7	25

See page 8 for Electrical Data footnotes.

Model YCAS	Volts	ELECTRICAL SUPPLY #2 FIELD SUPPLIED WIRING											
		Field Provided Power Supply				Factory Provided (Lugs) Wire Range <sup>7</sup>		Compressor #2			Fan <sup>11, 12</sup> Data		
		MRA <sup>1</sup> (MCA)	Min NF Disc SW <sup>2,9</sup>	Over-current Protection <sup>13</sup>		Standard Terminal Block	Optional NF Disc. Switch	RLA	Y-Δ LRA	X-LRA	Qty	FLA (ea)	LRA (ea)
				Min. <sup>3, 5</sup>	Max. <sup>4, 6</sup>								
0685EB	380	141	150	175	225	(1) # 2 - 4/0	(1) # 2 - 4/0	99	219	629	3	5.7	25
0775EB	380	184	200	225	300	(1) # 2 - 4/0	(1) #4 - 300	128	267	857	4	5.7	25
0835EB	380	184	200	225	300	(1) # 2 - 4/0	(1) #4 - 300	128	267	857	4	5.7	25
0905EB	380	226	250	300	350	(1) 1/0 - 300	(1) #4 - 300	163	267	857	4	5.7	25
0965EB	380	223	250	300	350	(1) 1/0 - 300	(1) #4 - 300	155	267	857	5	5.7	25

# ELECTRICAL DATA (50 Hz)

## OPTIONAL SINGLE POINT POWER SUPPLY CONNECTION WITH INDIVIDUAL SYSTEM CIRCUIT BREAKERS

One Field Provided Power Supply Circuit to the chiller. Field connections to Factory Provided Terminal Block (standard) or Non-Fused Disconnect (option) in the Options Panel. Individual System Circuit Breakers in each Motor Control Center.

CHILLER MODEL YCAS	FIELD-SUPPLIED WIRING					
	FIELD PROVIDED POWER SUPPLY				FACTORY PROVIDED (LUGS) WIRE RANGE <sup>7</sup>	
	MRA <sup>1</sup>	MIN NF DISC SW <sup>2,9</sup>	OVER-CURRENT PROTECTION		STANDARD TERMINAL BLOCK	OPTIONAL NF DISC. SWITCH
			MIN. <sup>3,5</sup>	MAX. <sup>4,6</sup>		
<b>0685EB</b>	482	600	600	600	(2) 2/0 - 500	(2) 250 - 500
<b>0775EB</b>	517	600	600	600	(2) 2/0 - 500	(2) 250 - 500
<b>0835EB</b>	560	600	700	700	(2) 2/0 - 500	(2) 250 - 500
<b>0905EB</b>	637	800	700	700	(3) 1/0 - 300	(3) 2/0 - 400
<b>0965EB</b>	625	800	800	800	(3) 1/0 - 300	(3) 2/0 - 400

See page 8 for Electrical Data footnotes.

Compressor #1 Data			Compressor #3 Data			Fan Data <sup>11, 12</sup>			Compressor #2 Data			Fan Data <sup>11, 12</sup>		
RLA	Y-Δ LRA	X-LRA	RLA	Y-Δ LRA	X-LRA	Qty	FLA (ea)	LRA (ea)	RLA	Y-Δ LRA	X-LRA	Qty	FLA (ea)	LRA (ea)
99	219	692	162	267	857	7	5.7	25	99	219	629	3	5.7	25
128	267	857	128	267	857	8	5.7	25	128	267	857	4	5.7	25
163	267	857	128	267	857	8	5.7	25	128	267	857	4	5.7	25
163	267	857	163	267	857	8	5.7	25	163	267	857	4	5.7	25
155	267	857	148	267	857	11	5.7	25	155	267	857	5	5.7	25

# ELECTRICAL DATA

## NOTES (pages 4 - 7)

1. MRA is Maximum Running Amps, the maximum continuous current at any operating point in the rating range. Also referred to as MCA, or Minimum Circuit Ampacity to be provided by the installer. If a Factory Mounted Control Transformer is provided, add 3 amps to the system #1 MCA values in the YCAS Tables.
2. The recommended disconnect switch is based on a minimum of 115% of the summation rated load amps of all the loads included in the circuit, per N.E.C. 440 - 12A1.
3. Minimum recommended fuse size is based on 150% of the largest motor RLA plus 100% of the remaining RLAs. Minimum fuse rating = (1.5 x largest compressor RLA) + other compressor RLAs + (# fans x each fan motor FLA).
4. Maximum dual element fuse size is based on 225% maximum plus 100% of the rated load amps for all other loads included in the circuit, per N.E.C. 440-22. Maximum fuse rating = (2.25 x largest compressor RLA) + other compressor RLAs + (# fans x each fan motor FLA).
5. Minimum recommended circuit breaker is 150% maximum plus 100% of rated load amps included in the circuit. Minimum circuit breaker rating = (1.5 x largest compressor RLA) + other compressor RLAs + (# fans x each fan motor FLA).
6. Maximum circuit breaker is based on 225% maximum plus 100% of the rated load amps for all loads included in the circuit, per circuit, per U.L. 1995 Fig. 36.2. Maximum circuit breaker rating = (2.25 x largest compressor RLA) + other compressor RLAs + (# fans x each fan motor FLA).
7. The Incoming Wire Range is the minimum and maximum wire size that can be accommodated by unit wiring lugs. The (1), (2), or (3) indicate the number of termination points or lugs which are available per phase. Actual wire size and number of wires per phase must be determined based on ampacity and job requirements using N.E.C. wire sizing information. The above recommendations are based on the National Electrical Code and using **copper connectors** only. Field wiring must also comply with local codes.
8. A ground lug is provided for each compressor system to accommodate field grounding conductor per N.E.C. Article 250-54. A control circuit grounding lug is also supplied.
9. The field supplied disconnect is a "Disconnecting Means" as defined in N.E.C. 100.B, and is intended for isolating the unit from the available power supply to perform maintenance and troubleshooting. This disconnect is not intended to be a Load Break Device.
10. Two-compressor machines with single-point power connection, and equipped with Star-Delta compressor motor start must also include Factory provided circuit breakers in each motor control center.
11. Consult factory for Electrical Data on units equipped with "High Static Fan" option. 50Hz High Static Fans are 3.5kW each.
12. FLA for each "Low Noise Fan" motor: 380v/50Hz = 4.1A.

## LEGEND

ACR-LINE	ACROSS THE LINE START
CB	CIRCUIT BREAKER
DE FU	DUAL ELEMENT FUSE
DISC SW	DISCONNECT SWITCH
FACT MOUNT CB	FACTORY-MOUNTED CIRCUIT BREAKER
FACT MOUNT FUSE	FACTORY-MOUNTED FUSES
FLA	FULL LOAD AMPS
HZ	HERTZ
MAX	MAXIMUM
MCA	MINIMUM CIRCUIT AMPACITY
MIN	MINIMUM
MIN NF	MINIMUM NON-FUSED
RLA	RUNNING LOAD AMPS
S.P. WIRE	SINGLE-POINT WIRING
UNIT MTD SERV SW	UNIT-MOUNTED SERVICE (NON-FUSED DISCONNECT SWITCH)
WYE-DELTA	WYE-DELTA START
XLRA	ACROSS-THE-LINE INRUSH LOCKED ROTOR AMPS
YLRA	WYE-DELTA INRUSH LOCKED ROTOR AMPS

**VOLTAGE CODE**  
50=380/415-3-50

**CONTROL POWER SUPPLY (UNITS WITH STANDARD CONTROL CIRCUIT TRANSFORMERS)**

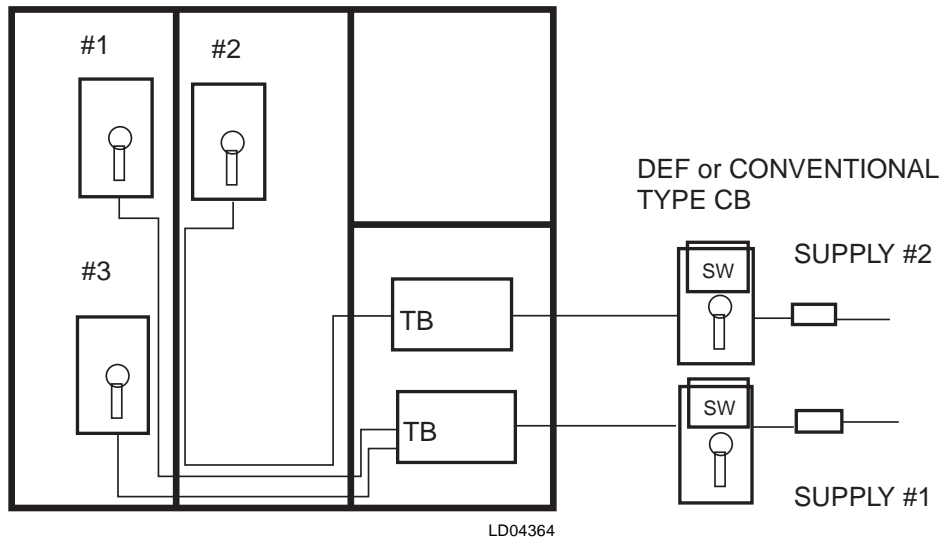
<b>NO. OF COMPRESSORS</b>	<b>CONTROL POWER SUPPLY</b>	<b>MCA (MAX LOAD CURRENT)</b>	<b>RECOMMENDED DUAL ELEMENT FUSE SIZE</b>	<b>NON-FUSED DISCONNECT SWITCH SIZE</b>
2	400V - 50Hz	6.3A	15A	—
3 or 4	400V - 50Hz	9.4A	15A	—

**CONTROL POWER SUPPLY (UNITS WITHOUT STANDARD CONTROL CIRCUIT TRANSFORMERS)**

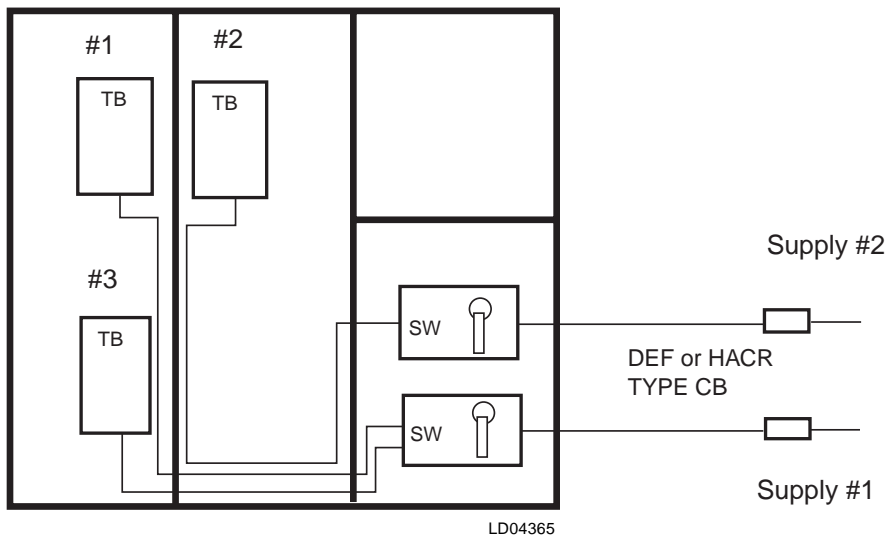
<b>NO. OF COMPRESSORS</b>	<b>CONTROL POWER SUPPLY</b>	<b>MCA (MAX LOAD CURRENT)</b>	<b>MAX DUAL ELEMENT FUSE SIZE</b>	<b>NON-FUSED DISCONNECT SWITCH SIZE</b>
2	115V-1Ø	20A	20A	30A
3 or 4 (Non-CE 50/60Hz)	115V-1Ø	30A	30A	30A
3 or 4 (CE 50Hz)	115V-1Ø	25A	30A	30A

# POWER WIRING POSSIBILITIES

## MULTIPLE POINT WITH SEPARATE SYSTEM CIRCUIT BREAKERS

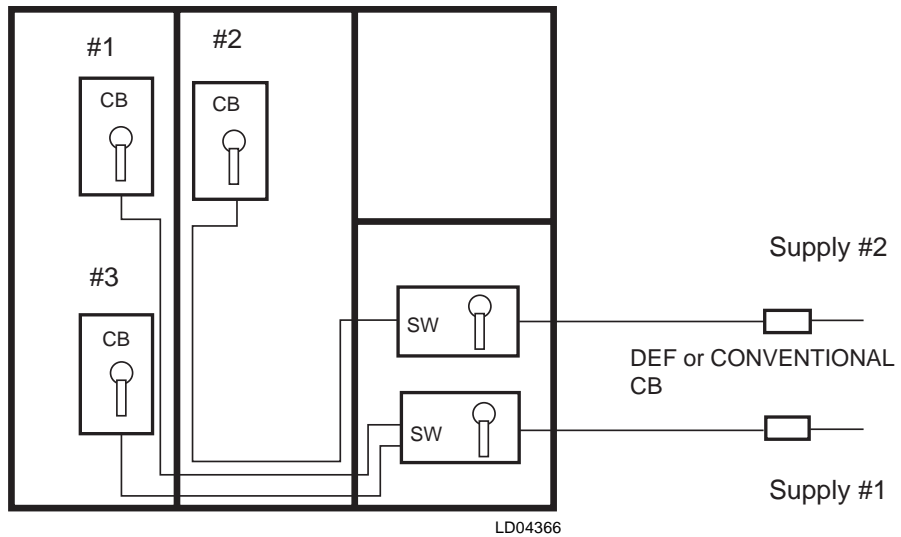


## MULTIPLE POINT NON-FUSED DISCONNECTS WITH SEPARATE SYSTEM TERMINAL BLOCKS (SUITABLE FOR ACROSS-THE-LINE START ONLY)

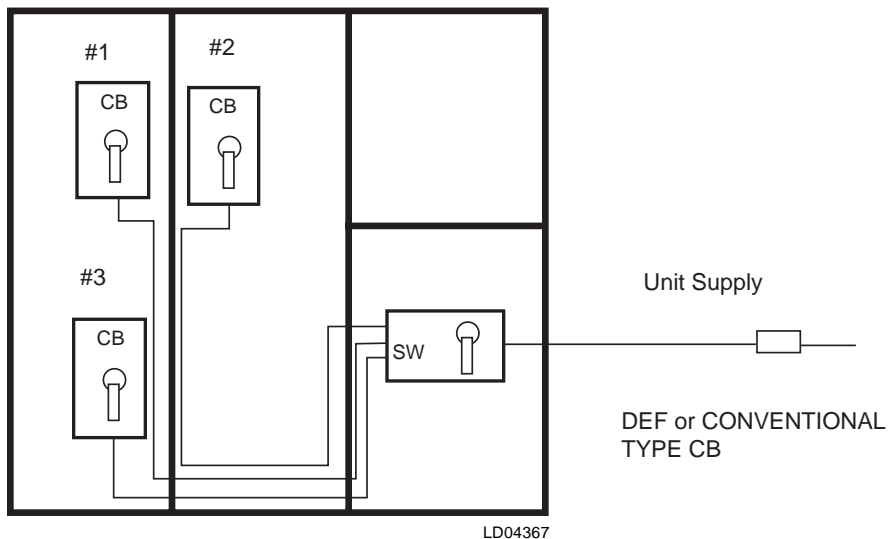


# POWER WIRING POSSIBILITIES

## MULTIPLE POINT NON-FUSED DISCONNECTS WITH SEPARATE SYSTEM CIRCUIT BREAKERS

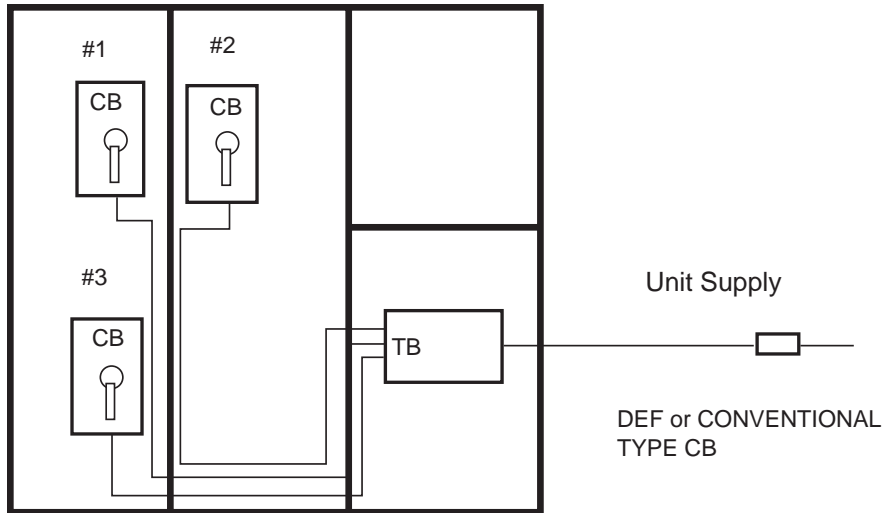


## SINGLE POINT WITH NON-FUSED DISCONNECT SWITCH & SYSTEM CIRCUIT BREAKERS



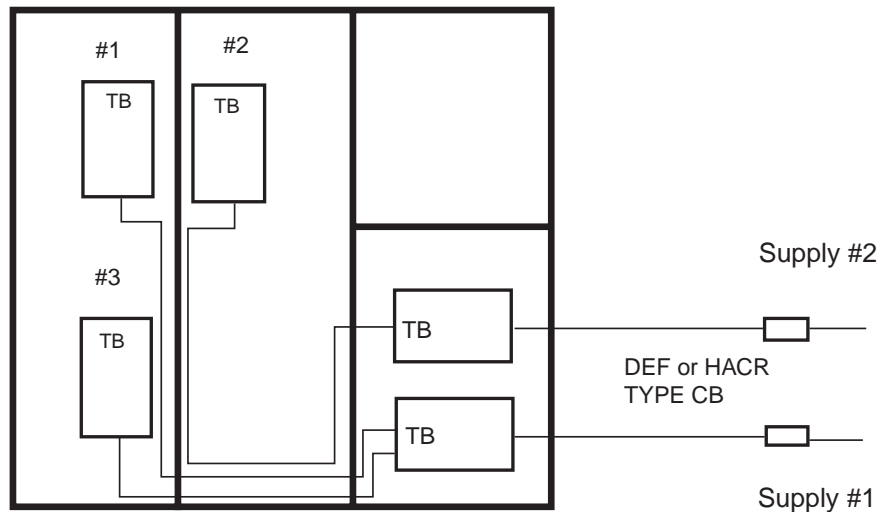
# POWER WIRING POSSIBILITIES

## SINGLE POINT WITH SEPARATE SYSTEM CIRCUIT BREAKERS



LD04368

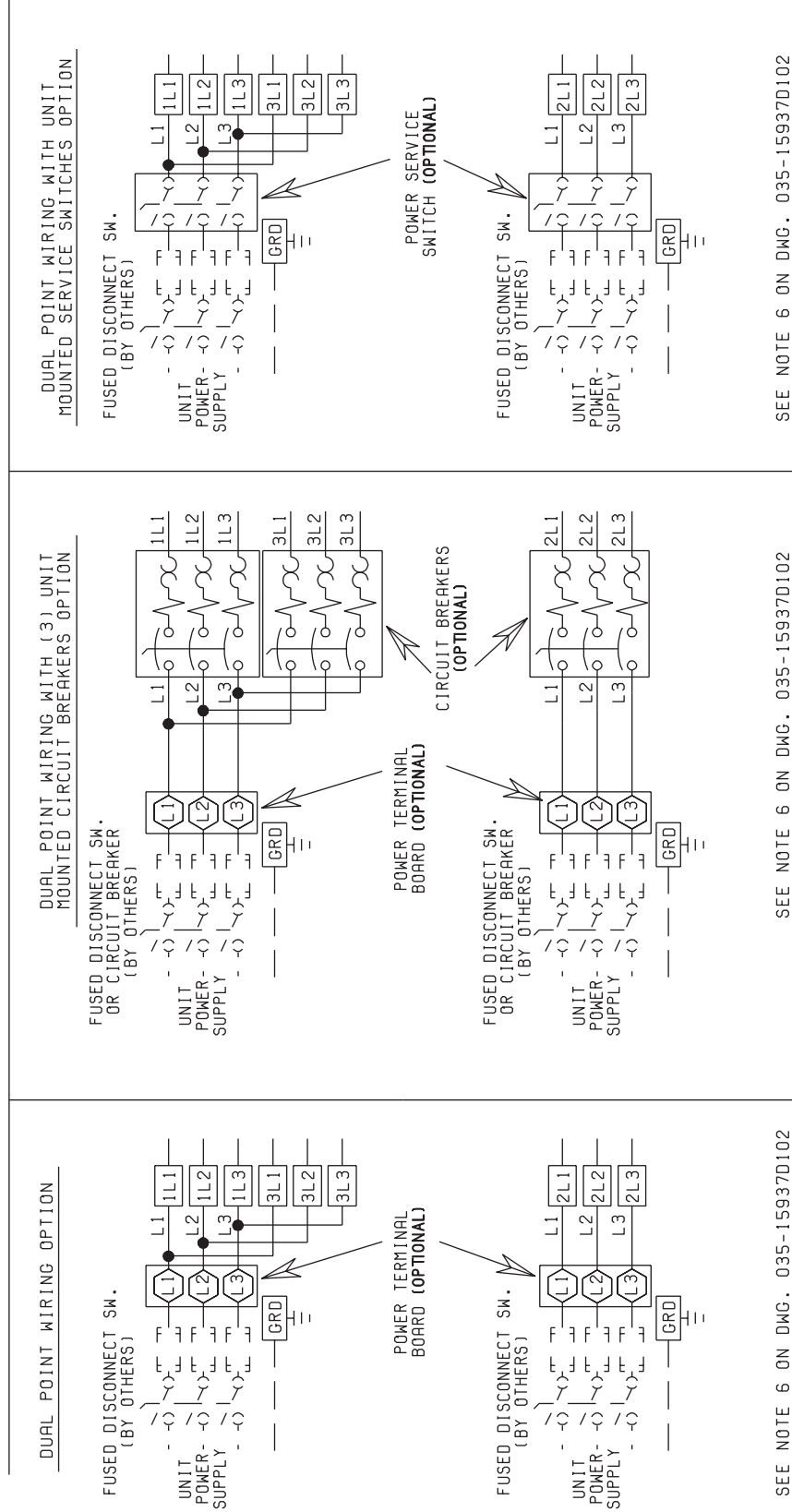
## MULTIPLE POINT WITH SEPARATE SYSTEM TERMINAL BLOCKS (SUITABLE FOR ACROSS-THE-LINE START ONLY)



LD04369



# ELEMENTARY DIAGRAM



SEE NOTE 6 ON DWG. 035-15937D102

SEE NOTE 6 ON DWG. 035-15937D102

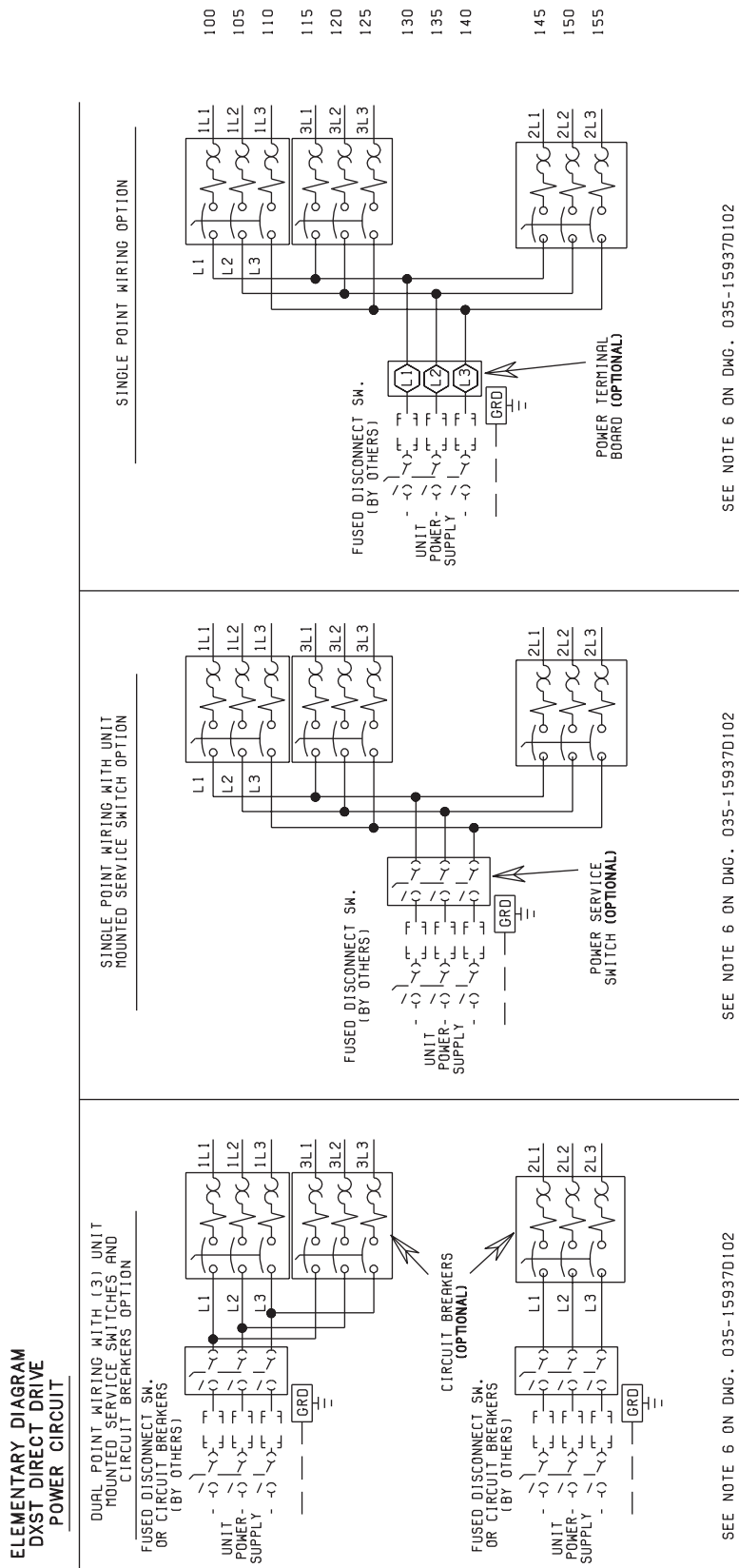
SEE NOTE 6 ON DWG. 035-15937D102

035-15937E103  
REV. NONE

LD04172A

FIG. 1 – ELEMENTARY DIAGRAM

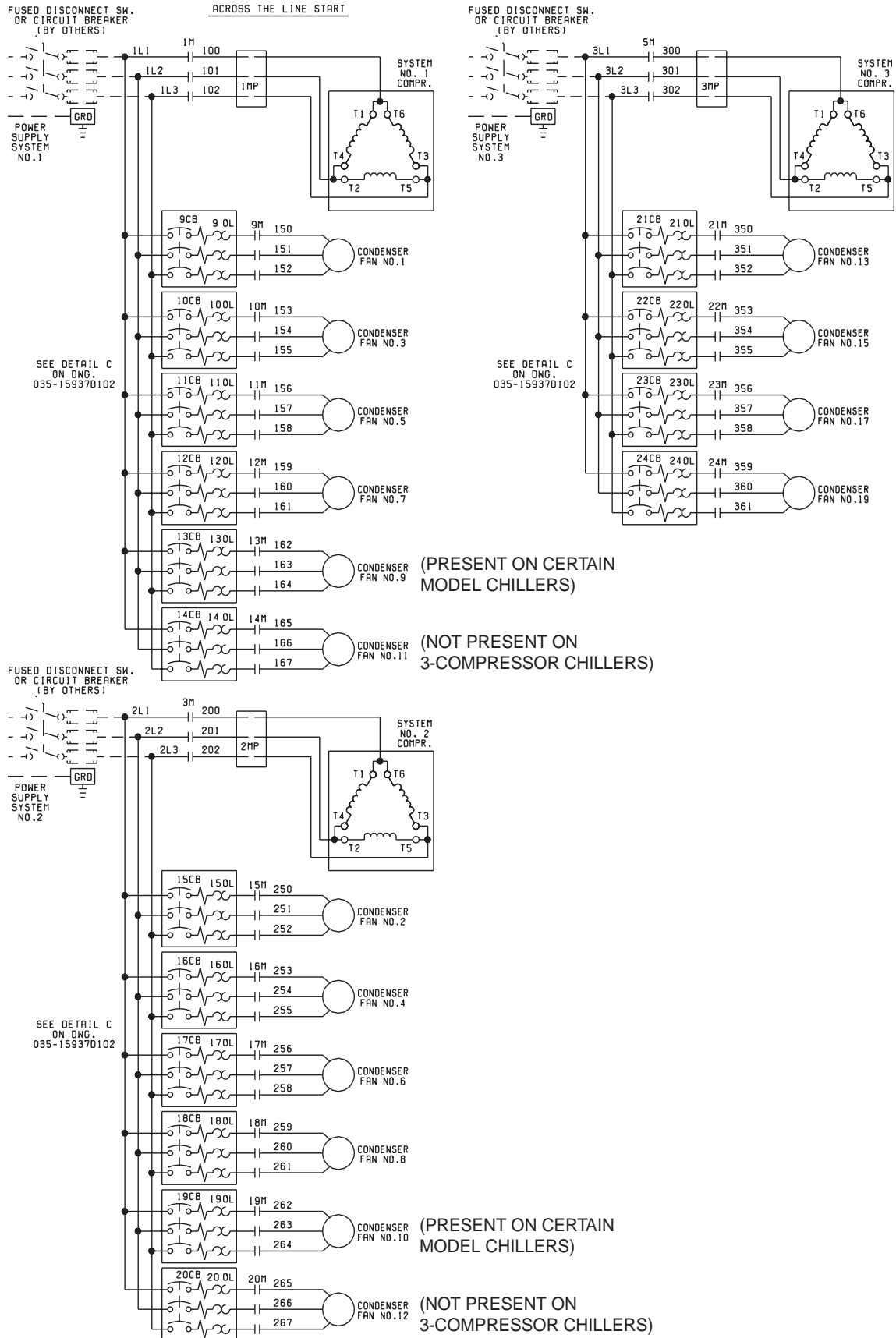
# ELEMENTARY DIAGRAM



LD04172B

FIG. 2 – ELEMENTARY DIAGRAM

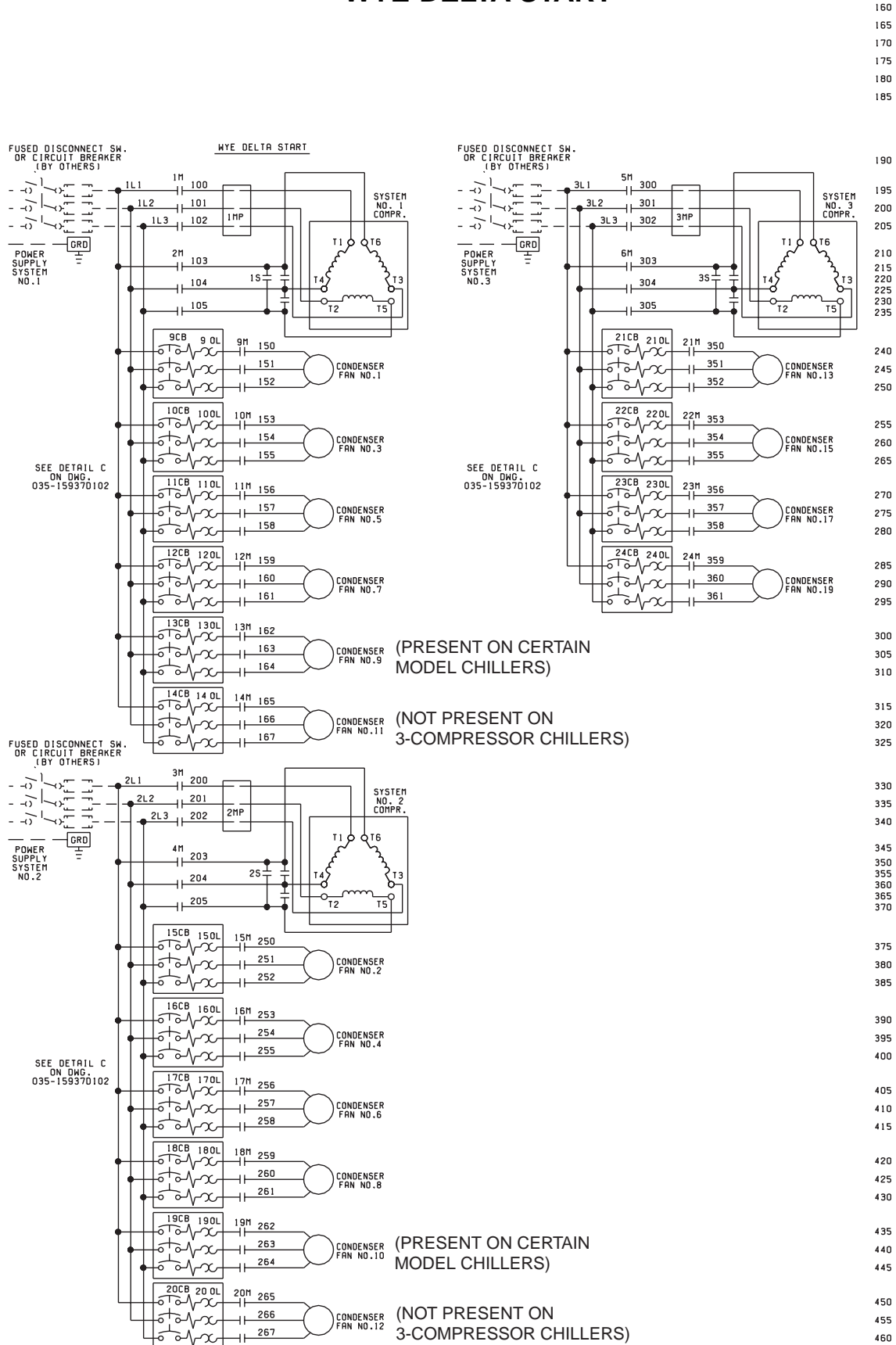
# STANDARD COMPRESSOR POWER SUPPLIES ACROSS-THE-LINE START



LD04173

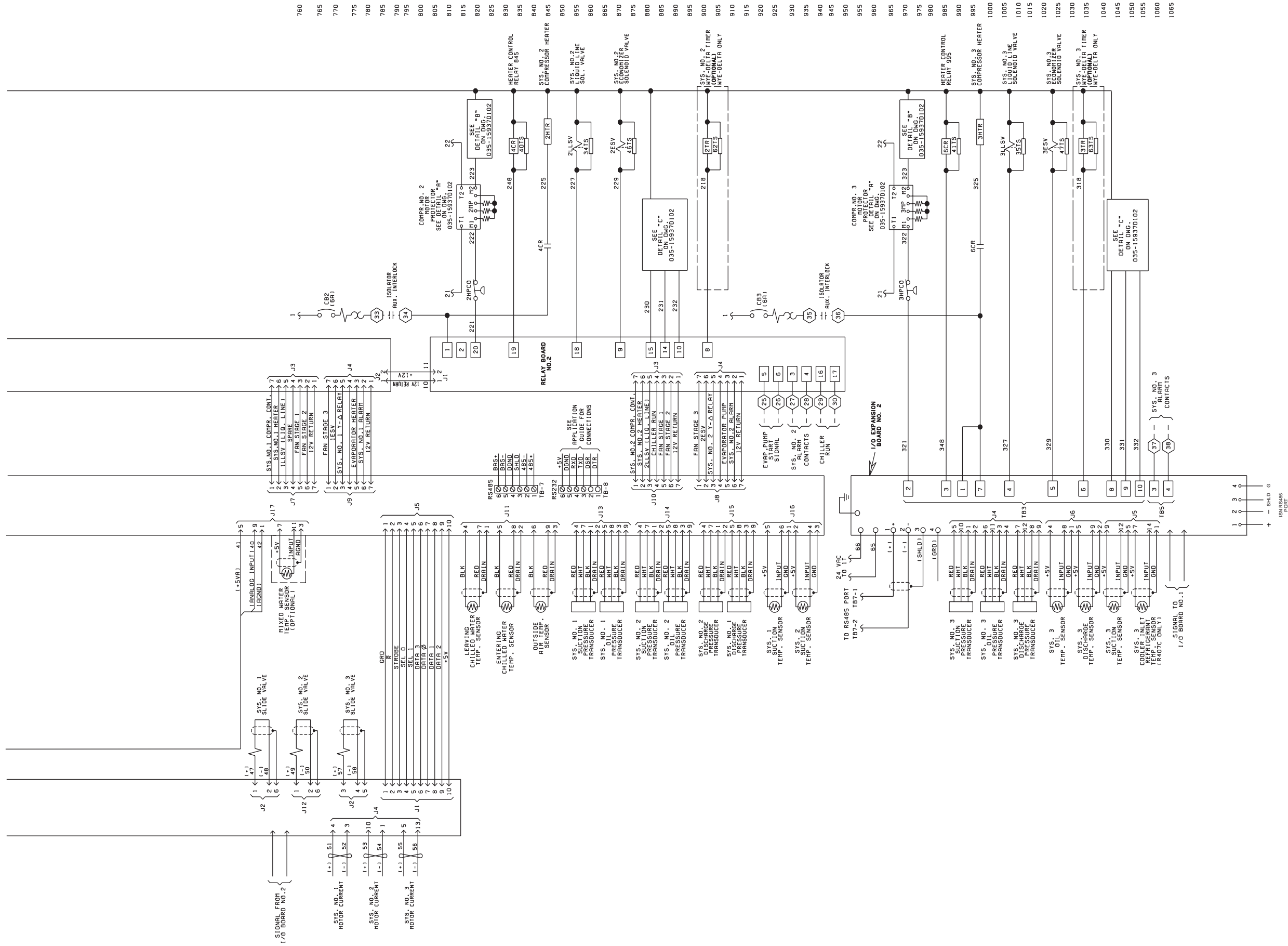
**FIG. 3 – STANDARD COMPRESSOR POWER SUPPLY - ACROSS-THE-LINE START**

# STANDARD COMPRESSOR POWER SUPPLIES WYE-DELTA START



**FIG. 4 – STANDARD COMPRESSOR POWER SUPPLY - WYE-DELTA START**





760  
765  
770  
775  
780  
785  
790  
795  
800  
805  
810  
815  
820  
825  
830  
835  
840  
845  
850  
855  
860  
865  
870  
875  
880  
885  
890  
895  
900  
905  
910  
915  
920  
925  
930  
935  
940  
945  
950  
955  
960  
965  
970  
975  
980  
985  
990  
1000  
1005  
1010  
1015  
1020  
1025  
1030  
1035  
1040  
1045  
1050  
1055  
1060  
1065

# CONNECTION DIAGRAM

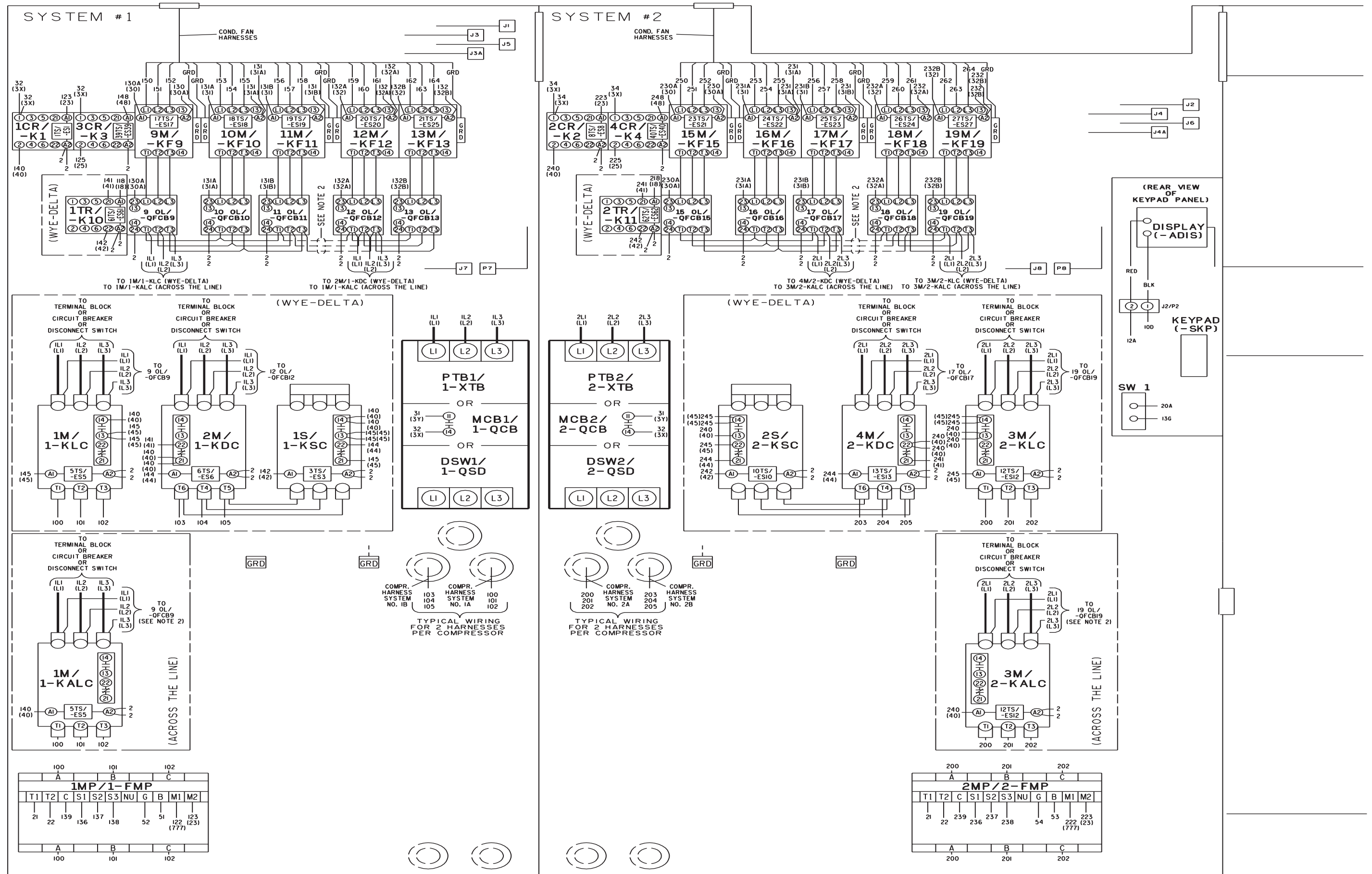
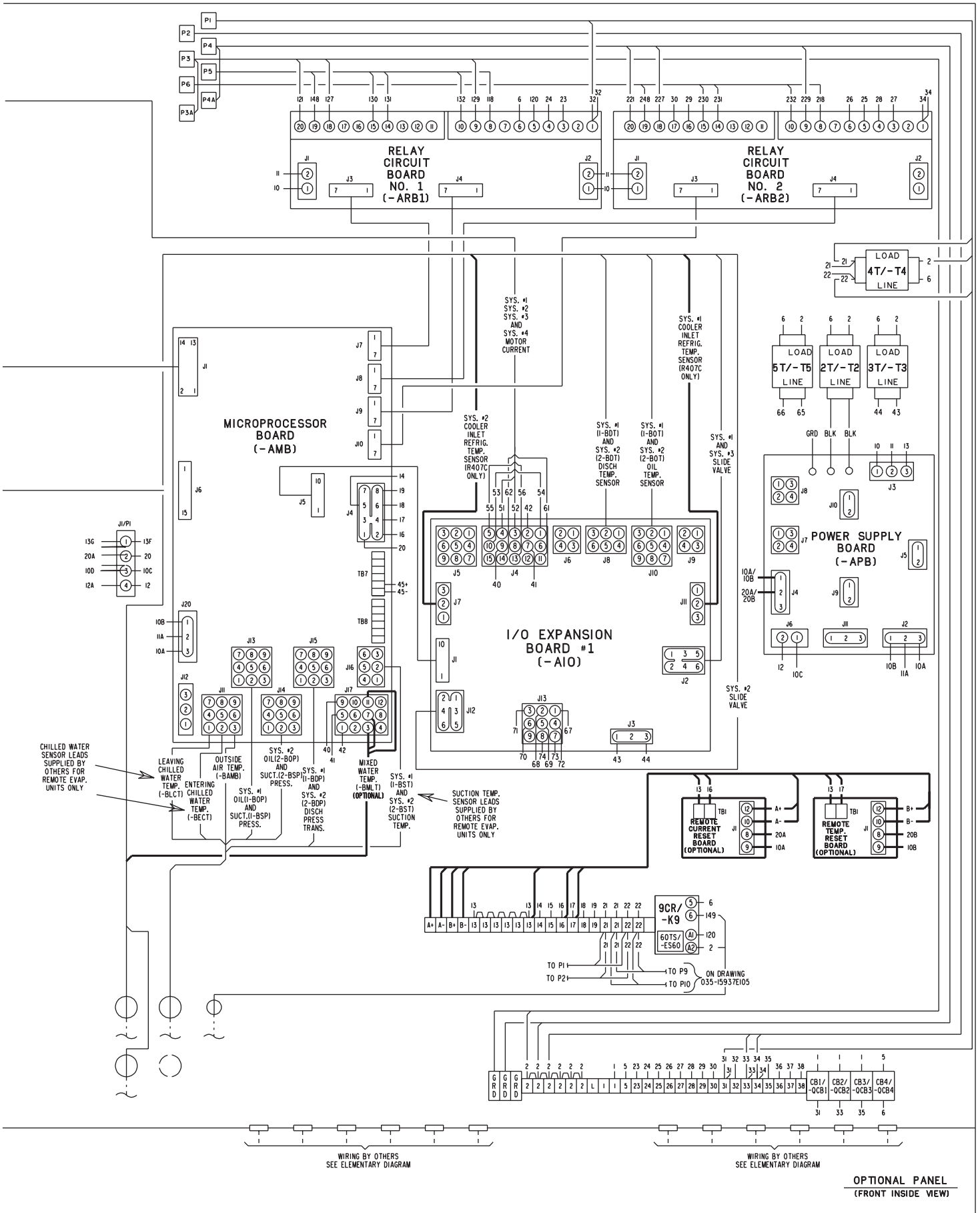


FIG. 6 - CONNECTION DIAGRAM

Box Information continued on page 22



# CONNECTION DIAGRAM

Box Information continued from page 20

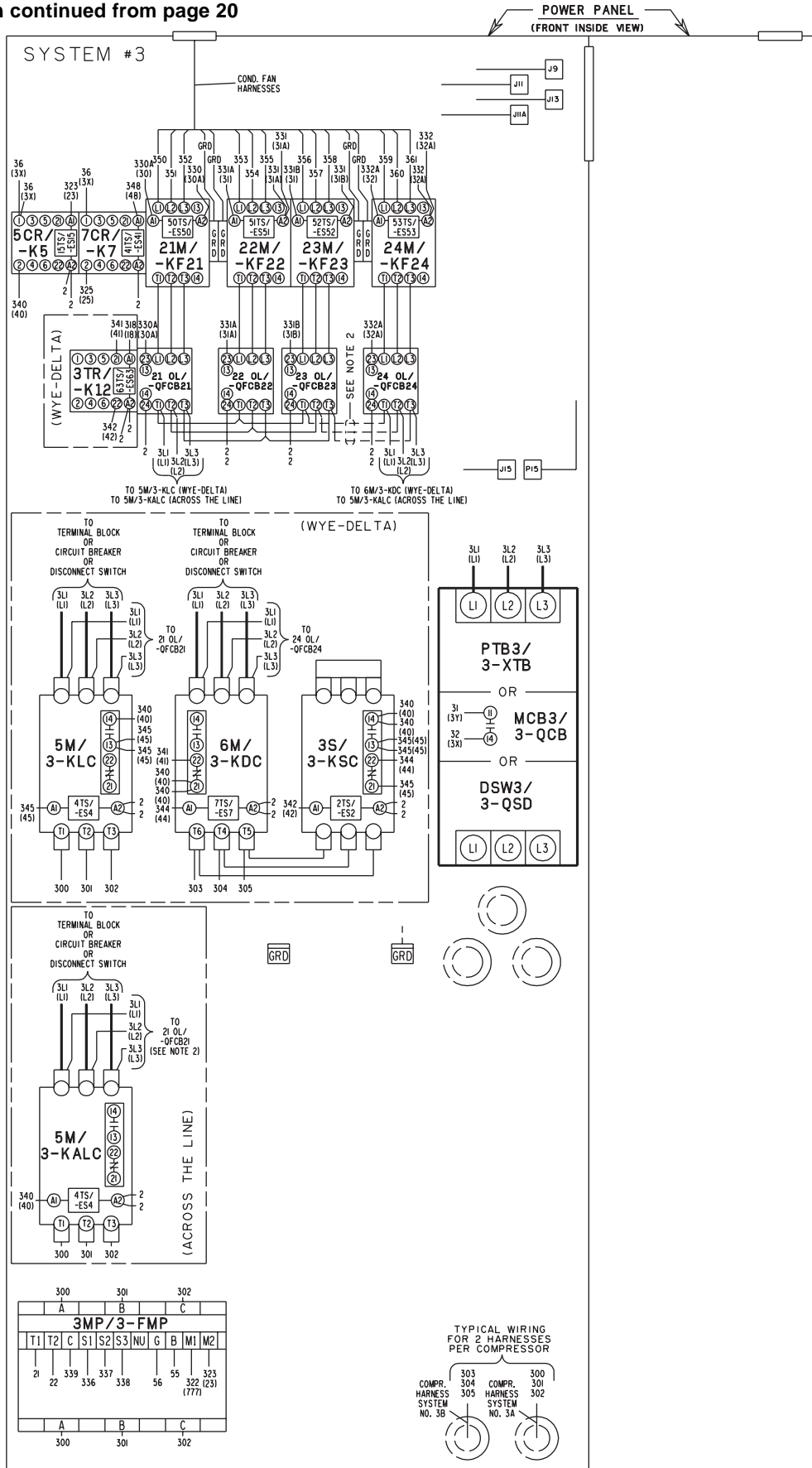
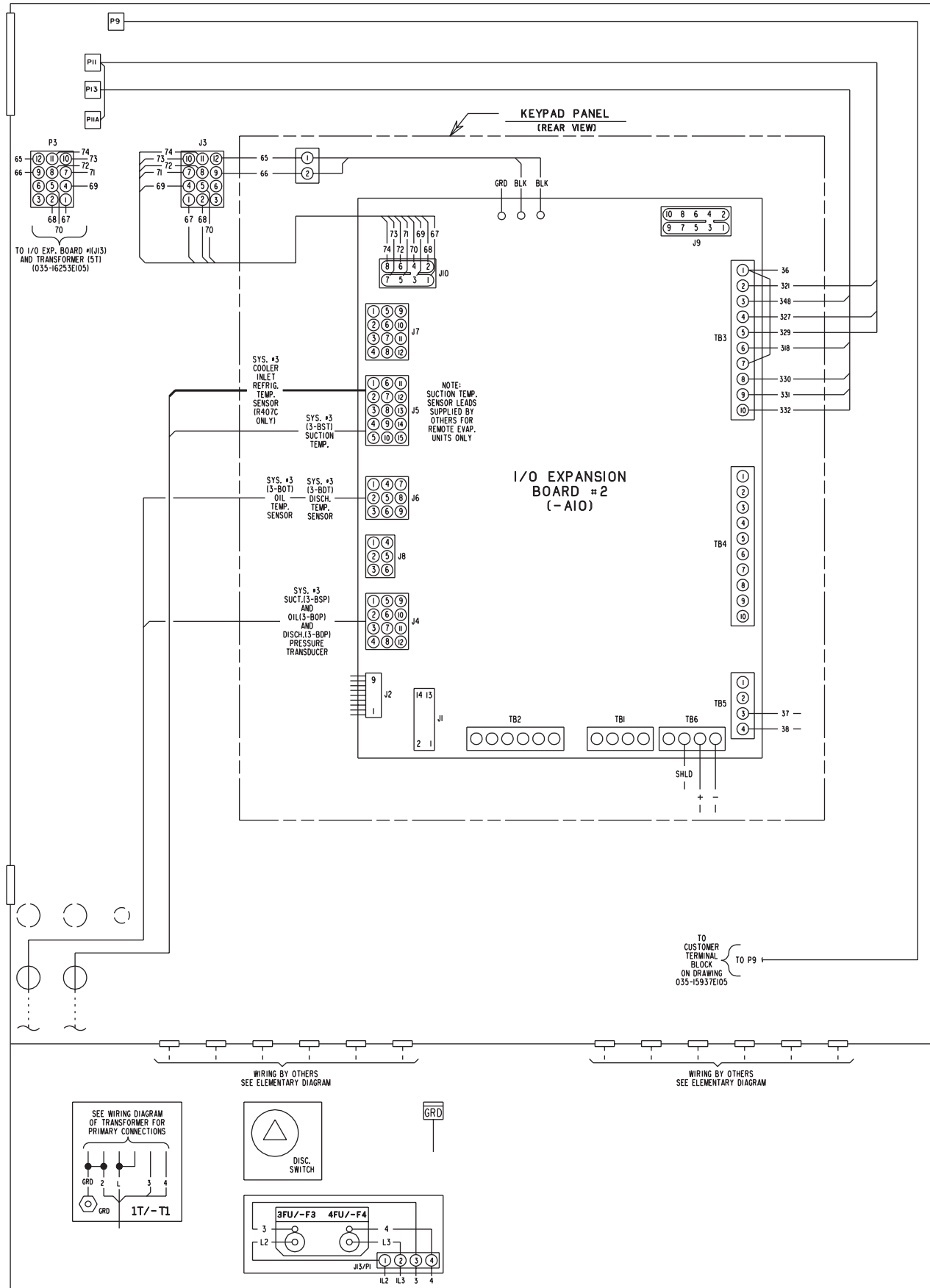


FIG. 7 - CONNECTION DIAGRAM

LD04180

# CONNECTION DIAGRAM

Box Information continued from page 20



**FIG. 8 – CONNECTION DIAGRAM**

LD04181

# CONNECTION DIAGRAM - ELECTRICAL BOX

## YCAS0250 - 0330, YCAS0693 - 0953 (STYLE F)

### STANDARD & REMOTE EVAP. UNITS

#### CONNECTION DIAGRAM, ELEC. BOX YCAS 130-230 YCAS 373-653 (STYLE F)

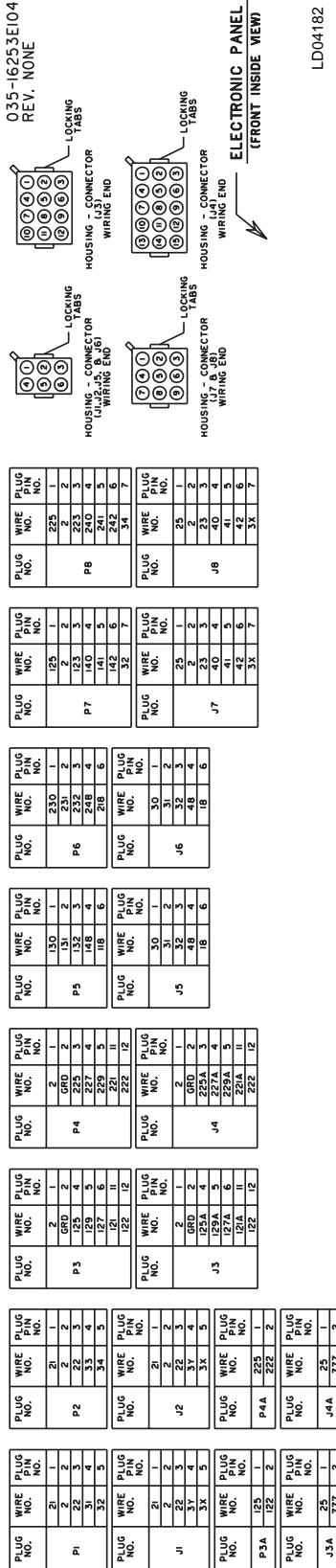
#### STANDARD AND REMOTE EVAP. UNITS

J1, J2, J3, J3A, J4, J4A, — POWER PANEL  
J5, J6, J7, J8, P7 & P8  
P1, P2, P3, P3A, — ELECTRONIC (MICRO) PANEL  
P4, P4A, P5, & P6

NOTE: 1. WIRE NUMBERS IDENTIFIED IN (PARENTHESES) INDICATE THE ACTUAL HARNESS CODE STAMPED ON THE WIRE.  
2. FOR 380V-575V CHILLERS, POWER TO 4TH AND 5TH FANS IS VIA JUMPERS FROM 3RD MANUAL STARTER. FOR 200V-230V CHILLERS A SECOND POWER FEED IS PROVIDED AS SHOWN.

- |  |  |
|--|--|
| <p>1CR THRU 4CR, 9CR / -CONTROL RELAYS<br/>-K1 THRU -K4, -K9<br/>CB1, CB2, CB3 / -CIRCUIT BREAKERS<br/>-OCB1, -OCB2, -OCB3<br/>9CB THRU 13CB</p> <p>15CB THRU 19CB</p> <p>9 OL THRU 13 OL<br/>15 OL THRU 19 OL<br/>-OCB9 THRU -OCB13<br/>-OCB15 THRU -OCB19</p>                                  | <p>1M, 3M / -COMPRESSOR CONTACTORS<br/>1-KLC OR 1-KALC, 2-KLC OR 2-KALC<br/>2M, 4M / -COMPRESSOR CONTACTORS<br/>1-KOC, 2-KOC<br/>1S, 2S / -COMPRESSOR CONTACTORS<br/>9M THRU 13M / -CONDENSER FAN CONTACTORS (SYS. #1)<br/>15M THRU 19M / -CONDENSER FAN CONTACTORS (SYS. #2)<br/>-KF15 THRU -KF19 (SYS. #1)<br/>1MP/1-FMP<br/>2MP/2-FMP</p> |
| <p>27, 3T, 4T / -MICRO PANEL TRANSFORMERS<br/>-T2, -T3, -T4<br/>1TR, 2TR / -TIMER RELAYS<br/>-K10, -K11<br/>1S7-ES<br/>P1B1, P1B2 / -TRANSIENT SUPPRESSORS<br/>1-XTB, 2-XTB<br/>MCB1, MCB2 / -POWER TERMINAL BLOCK<br/>1-OCB, 2-OCB<br/>DSM1, DSM2 / -MOTOR CIRCUIT BREAKER<br/>1-OSD, 2-OSD</p> | <p>1-KSC, 2-KSC<br/>-KF9 THRU -KF13 (SYS. #1)<br/>-KF9 THRU 19M / -CONDENSER FAN CONTACTORS (SYS. #2)<br/>-MOTOR PROTECTOR (SYS. #1)<br/>-MOTOR PROTECTOR (SYS. #2)</p>  |

POWER PANEL  
(FRONT INSIDE VIEW)



LD04182

FIG. 9 - CONNECTION DIAGRAM

# CONNECTION DIAGRAM - ELECTRICAL BOX

## YCAS0250 - 0330, YCAS0693 - 0953 (STYLE F)

### STANDARD & REMOTE EVAP. UNITS

CONNECTION DIAGRAM, ELEC. BOX  
 YCAS 130-230  
 YCAS 373-653  
 (STYLE F)  
 STANDARD AND REMOTE EVAP. UNITS

PLUG NO.	WIRE NO.	PLUG PIN NO.
P9	21	1
	22	2
	22	3
	32	3
	32	5
J9	21	1
	22	2
	22	3
	32	3
	32	5
PIIA	325	1
	322	2
	322	2
JIIA	25	1
	777	1
	777	2

J9, JII, JIIA, JI5, JI5, PI5  
 P9, PII, PIIA, PI3  
 — POWER PANEL  
 — ELECTRONIC (MICRO) PANEL

NOTE: 1. WIRE NUMBERS IDENTIFIED IN PARENTHESES INDICATE THE ACTUAL HARNESS CODE STAMPED ON THE WIRE.  
 2. FOR 360V-575V CHILLERS, POWER TO 4TH AND 5TH FANS IS VIA JUMBERS FROM 4TH AND 5TH FAN TERMINALS. FOR 360V CHILLERS, SECOND POWER FEED IS PROVIDED AS SHOWN.

61, 71, 81/-  
 -16, -17, -18  
 3TR.  
 -KIT, -K13  
 TS/-ES  
 PTB3, PTB4/  
 3-XTB.  
 MCB3, MCB4/  
 3-OCB.  
 DSH3, DSH4/  
 3-OSD.  
 ---  
 ---

5M  
 3-KLC OR 3-KLC  
 6M, 8M/  
 3-KOC  
 3-KSC  
 2TH THRU 24M/  
 -MF21 THRU -MF24 (SYS. #3)  
 3MP/3-FHP  
 11/-11

SCR & TCR/  
 -K5 & -K7  
 CB4, CBS, CB6/  
 -OCB4, -OCB5, -OCB6  
 2ICB THRU 24CB  
 21 OL THRU 24 OL  
 -OF CB21 THRU -OF CB24  
 -MOTOR OVERLOADS W/OVERLOAD CIRCUIT BREAKERS (SYS. #3)  
 3FU, 4FU/  
 -F3, -F4

**LEGEND**

-CONTROL RELAYS  
 -CIRCUIT BREAKERS  
 -OVERLOAD CIRCUIT BREAKERS (SYS. #3)  
 -MOTOR OVERLOADS (SYS. #3)  
 -MOTOR OVERLOADS W/OVERLOAD CIRCUIT BREAKERS (SYS. #3)  
 -TRANSFORMER FUSE (OPTIONAL)  
 -COMPRESSOR CONTACTORS  
 -COMPRESSOR CONTACTORS  
 -COMPRESSOR CONTACTORS  
 -CONDENSER FAN CONTACTORS (SYS. #3)  
 -MOTOR PROTECTOR (SYS. #3)  
 -CONTROL TRANSFORMER 2KVA (OPTIONAL)

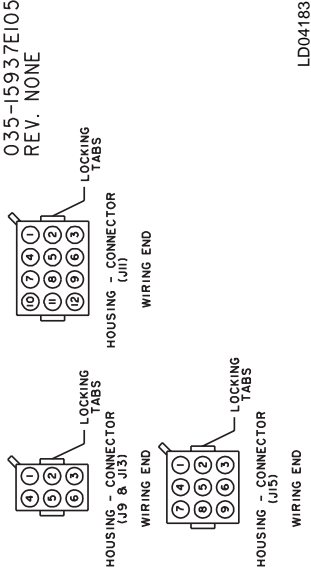
PLUG NO.	WIRE NO.	PLUG PIN NO.
P15	325	1
	322	2
	323	3
	340	4
	342	6
J15	25	1
	2	2
	23	3
	40	4
	41	5
	42	6
	3X	7

PLUG NO.	WIRE NO.	PLUG PIN NO.
P13	330	1
	331	2
	322	3
	348	4
	318	6

PLUG NO.	WIRE NO.	PLUG PIN NO.
J13	30	1
	31	2
	32	3
	48	4
	18	6

PLUG NO.	WIRE NO.	PLUG PIN NO.
PII	2	1
	GRD	2
	323	3
	327	5
	327	4
	322	12

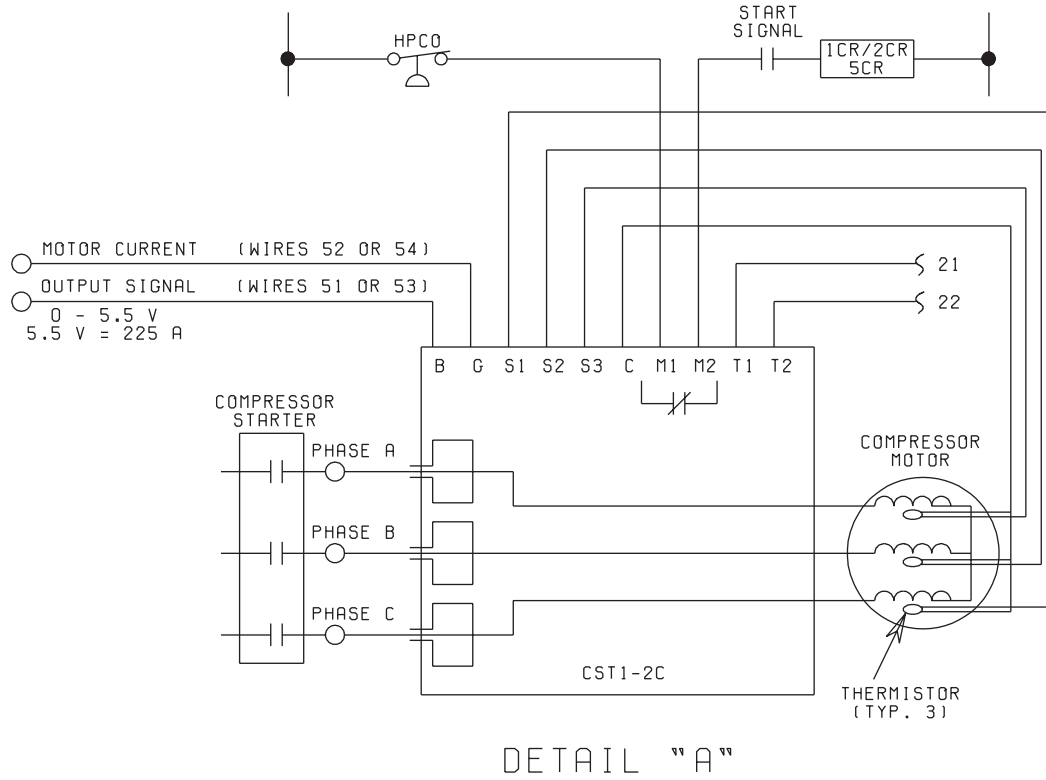
PLUG NO.	WIRE NO.	PLUG PIN NO.
JII	2	1
	GRD	2
	325A	3
	329A	5
	327A	4
	322	12



LD04183

FIG. 10 – CONNECTION DIAGRAM

# ELEMENTARY DIAGRAM DXST DIRECT DRIVE CONTROL CIRCUIT



**NOTES:**

1. FIELD WIRING TO BE IN ACCORDANCE WITH THE CURRENT EDITION OF THE NATIONAL ELECTRICAL CODE AS WELL AS ALL OTHER APPLICABLE CODES AND SPECIFICATIONS.
2. CONTACTS MUST BE SUITABLE FOR SWITCHING 24VDC. (GOLD CONTACTS RECOMMENDED). WIRING SHALL NOT BE RUN IN THE SAME CONDUIT WITH ANY LINE VOLTAGE WIRING.
3. TO CYCLE UNIT ON AND OFF AUTOMATICALLY WITH CONTACT SHOWN, INSTALL A CYCLING DEVICE IN SERIES WITH THE FLOW SWITCH (FLSW). SEE NOTE 2 FOR CONTACT RATING AND WIRING SPECIFICATIONS.
4. TO STOP UNIT (EMERGENCY STOP) WITH CONTACTS OTHER THAN THOSE SHOWN, INSTALL THE STOP CONTACT BETWEEN TERMINALS 5 AND I. IF A STOP DEVICE IS NOT INSTALLED, A JUMPER MUST BE CONNECTED BETWEEN TERMINALS 5 AND I. DEVICE MUST HAVE A MINIMUM CONTACT RATING OF 100VA AT 115VOLTS A.C.
5. ALARM CONTACTS ARE FOR ANNUNCIATING ALARM/UNIT MALFUNCTION. CONTACTS ARE RATED AT 115V, 100VA, RESISTIVE LOAD ONLY, AND MUST BE SUPPRESSED AT LOAD BY USER.
6. SEE INSTALLATION, OPERATION AND MAINTENANCE MANUAL WHEN OPTIONAL EQUIPMENT IS USED.
7. JUMPER MUST BE INSTALLED FOR THREE COMPRESSOR OPERATION.

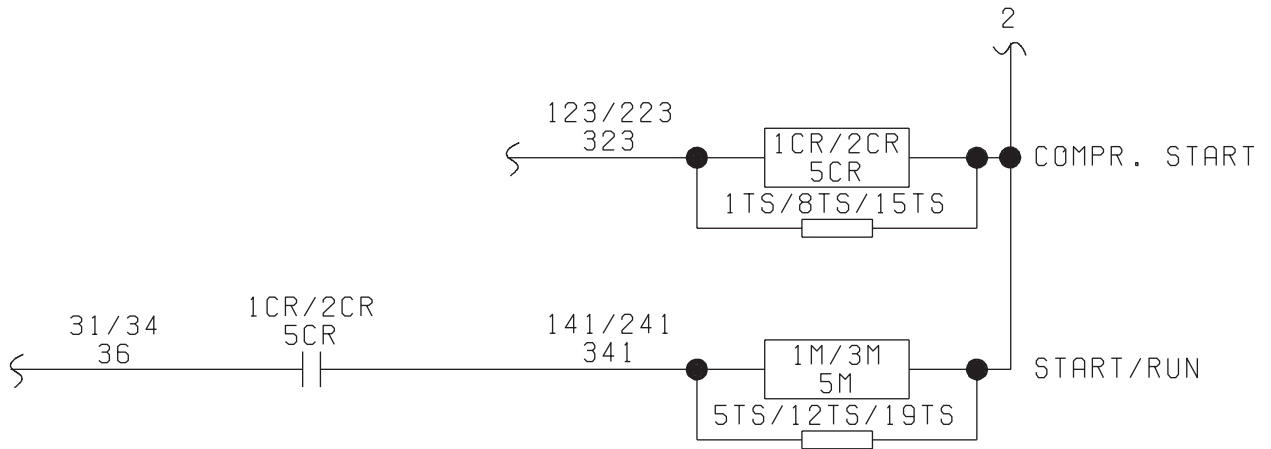
LEGEND	
TS	TRANSIENT VOLTAGE SUPPRESSION
◻	TERMINAL BLOCK FOR CUSTOMER CONNECTIONS
△	TERMINAL BLOCK FOR CUSTOMER LOW VOLTAGE (CLASS 2) CONNECTIONS. SEE NOTE 2.
◻	TERMINAL BLOCK FOR YORK CONNECTIONS ONLY
—	WIRING AND COMPONENTS BY YORK
- - -	OPTIONAL EQUIPMENT
- - -	WIRING AND/OR COMPONENTS BY OTHERS

035-15937D102  
REV. NONE

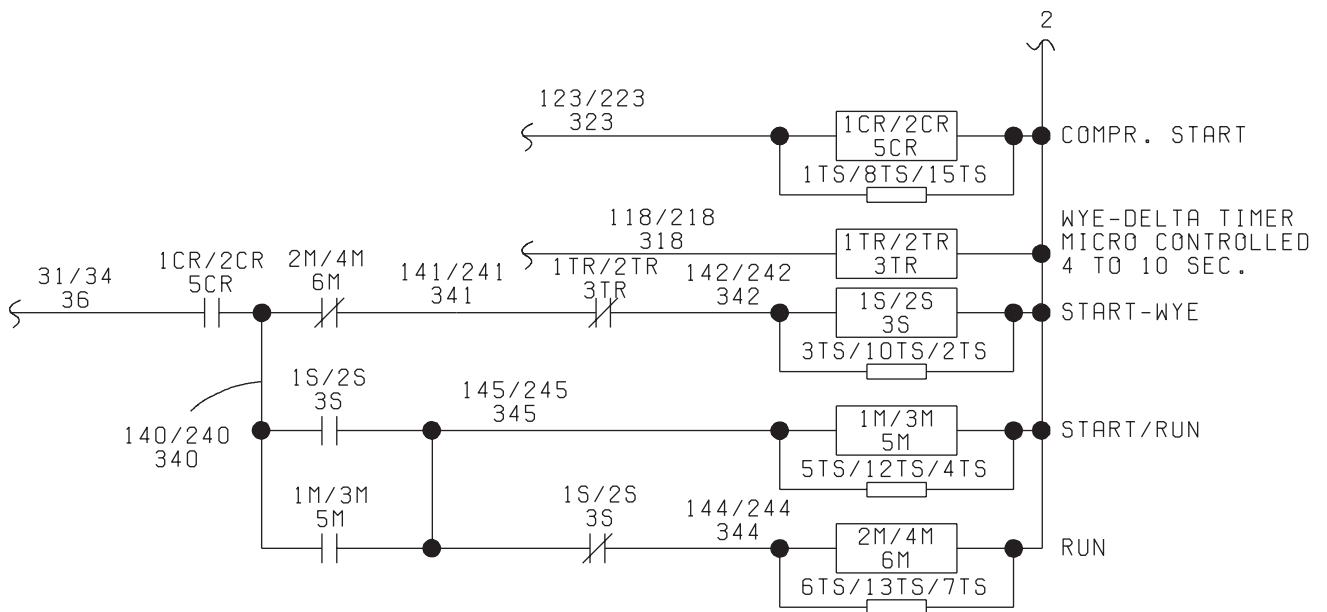
LD04177

**FIG. 11 – ELEMENTARY DIAGRAM, DXST DIRECT DRIVE - CONTROL CIRCUIT**

### ELEMENTARY DIAGRAM DXST DIRECT DRIVE CONTROL CIRCUIT



#### ACROSS THE LINE START

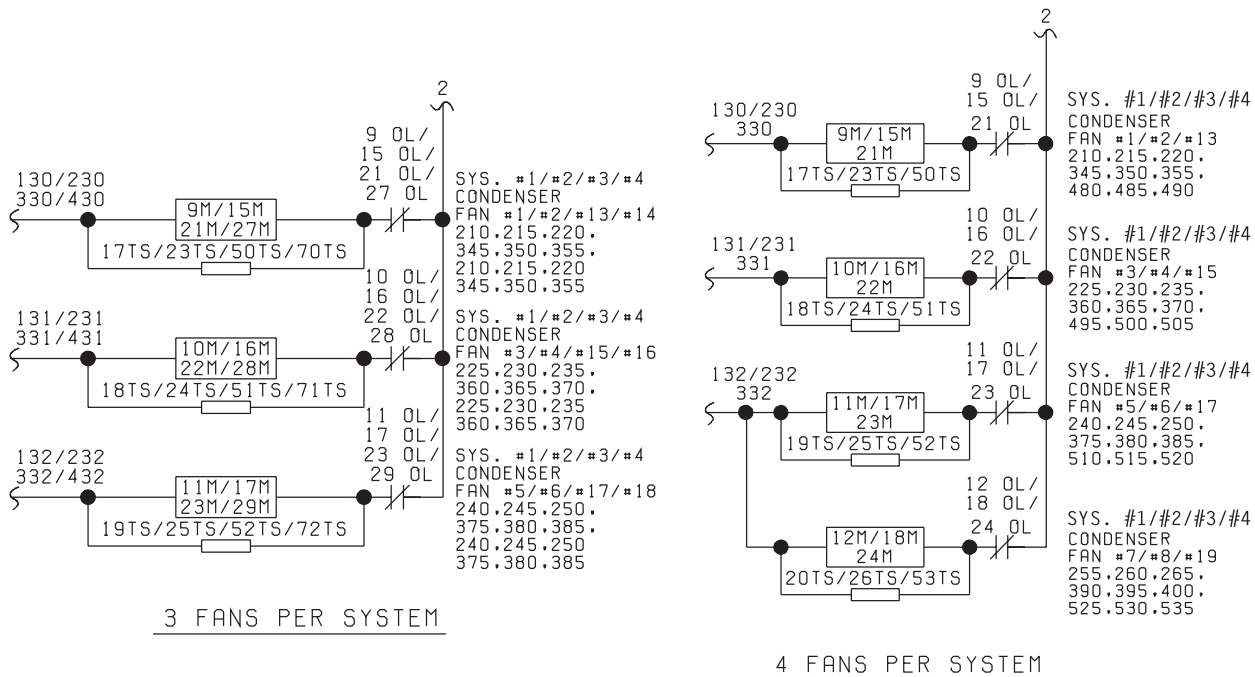


#### WYE DELTA START

#### DETAIL "B"

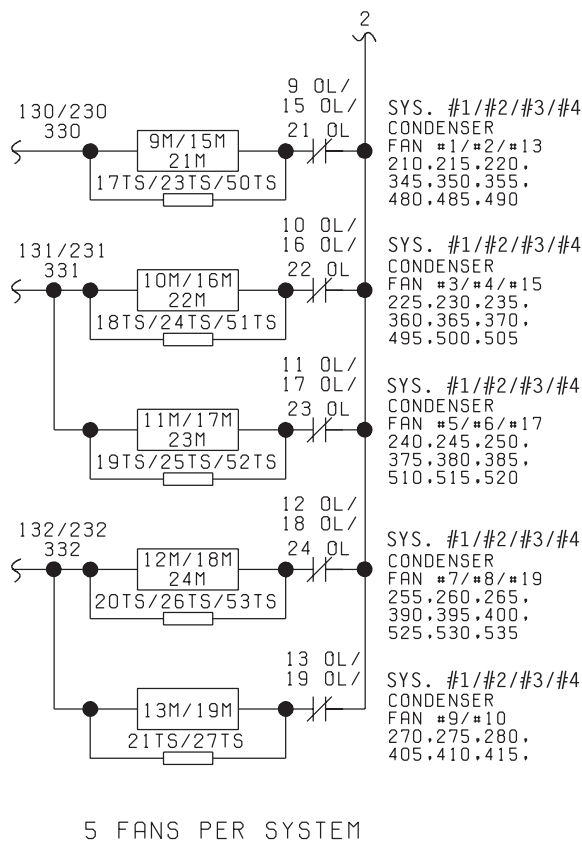
**FIG. 12 – ELEMENTARY DIAGRAM, DXST DIRECT DRIVE - CONTROL CIRCUIT**

# ELEMENTARY DIAGRAM DXST DIRECT DRIVE CONTROL CIRCUIT



## DETAIL "C"

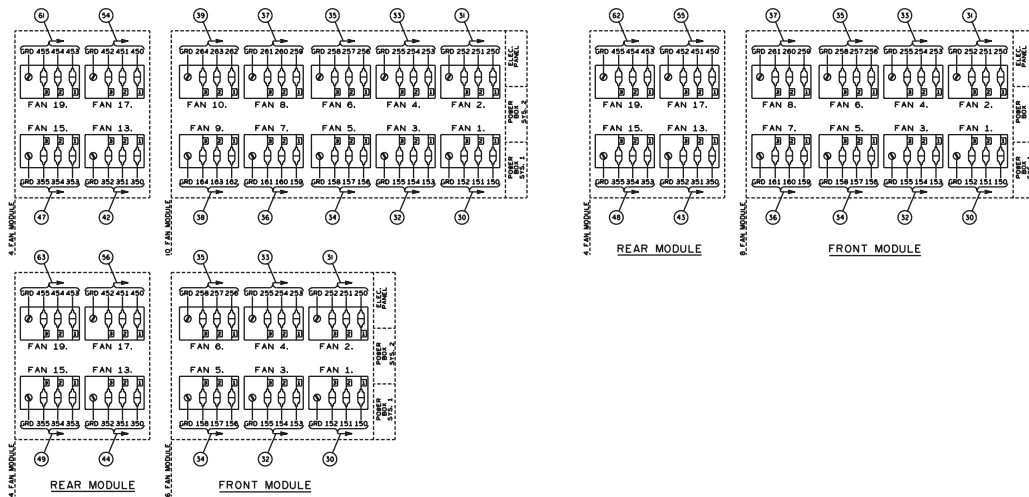
SEE INSTALLATION, OPERATION AND MAINTENANCE MANUAL  
FOR JUMPER OF CONDENSER FANS FOR CHILLER MODEL



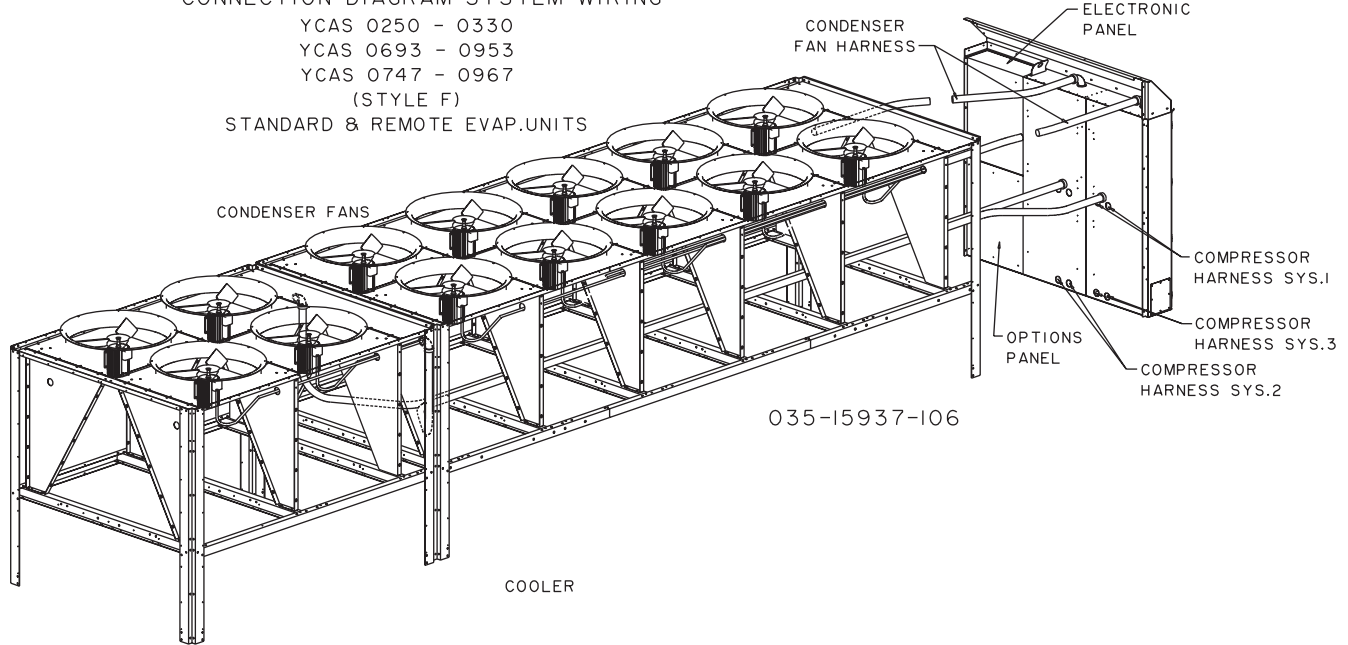
LD04374

**FIG. 13 – ELEMENTARY DIAGRAM, DXST DIRECT DRIVE - CONTROL CIRCUIT**

# CONNECTION DIAGRAM SYSTEM WIRING STANDARD & REMOTE EVAP. UNITS



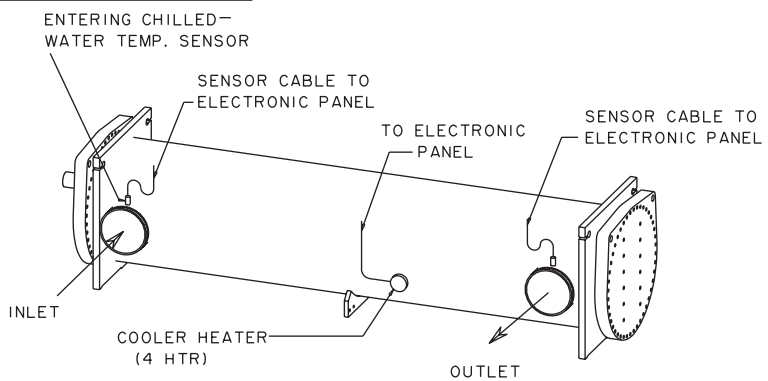
CONNECTION DIAGRAM SYSTEM WIRING  
 YCAS 0250 - 0330  
 YCAS 0693 - 0953  
 YCAS 0747 - 0967  
 (STYLE F)  
 STANDARD & REMOTE EVAP. UNITS



035-15937-106

- LEGEND**
- 1 HPCO      SYS. NO.1 HIGH PRESS. CUTOUT
  - 2 HPCO      SYS. NO.2 HIGH PRESS. CUTOUT
  - 3 HPCO      SYS. NO.3 HIGH PRESS. CUTOUT
  
  - 1 HTR        SYS. NO.1 COMPR. CRANKCASE HEATER
  - 2 HTR        SYS. NO.2 COMPR. CRANKCASE HEATER
  - 3 HTR        SYS. NO.3 COMPR. CRANKCASE HEATER
  - 4 HTR        COOLER HEATER
  
  - 1 LLSV        SYS. NO.1 LIQUID LINE SOLENIOD VALVE (UNIT IDENT)
  - 2 LLSV        SYS. NO.2 LIQUID LINE SOLENIOD VALVE (UNIT IDENT)
  - 3 LLSV        SYS. NO.3 LIQUID LINE SOLENIOD VALVE (UNIT IDENT)
  
  - 1 ESV        ECONOMIZER SOLENIOD VAVLE (UNIT IDENT)
  - 2 ESV        ECONOMIZER SOLENIOD VAVLE (UNIT IDENT)
  - 3 ESV        ECONOMIZER SOLENIOD VAVLE (UNIT IDENT)
  
  - TXV 1        SYS. NO.1 THERMAL EXPANSION VALVE (UNIT IDENT)
  - TXV 2        SYS. NO.2 THERMAL EXPANSION VALVE (UNIT IDENT)
  - TXV 3        SYS. NO.3 THERMAL EXPANSION VALVE (UNIT IDENT)

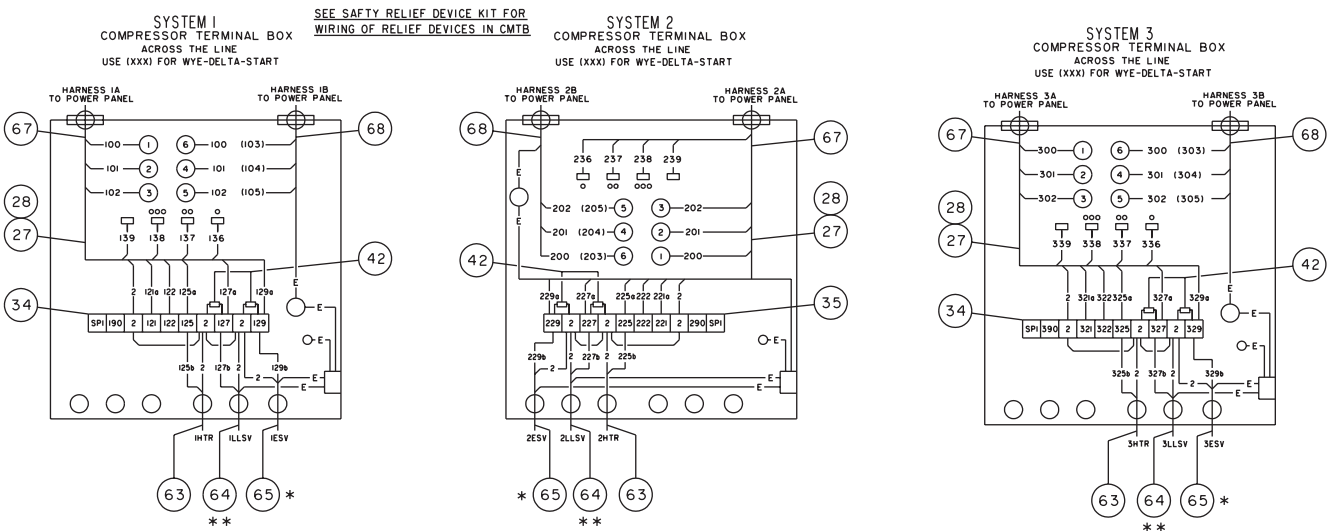
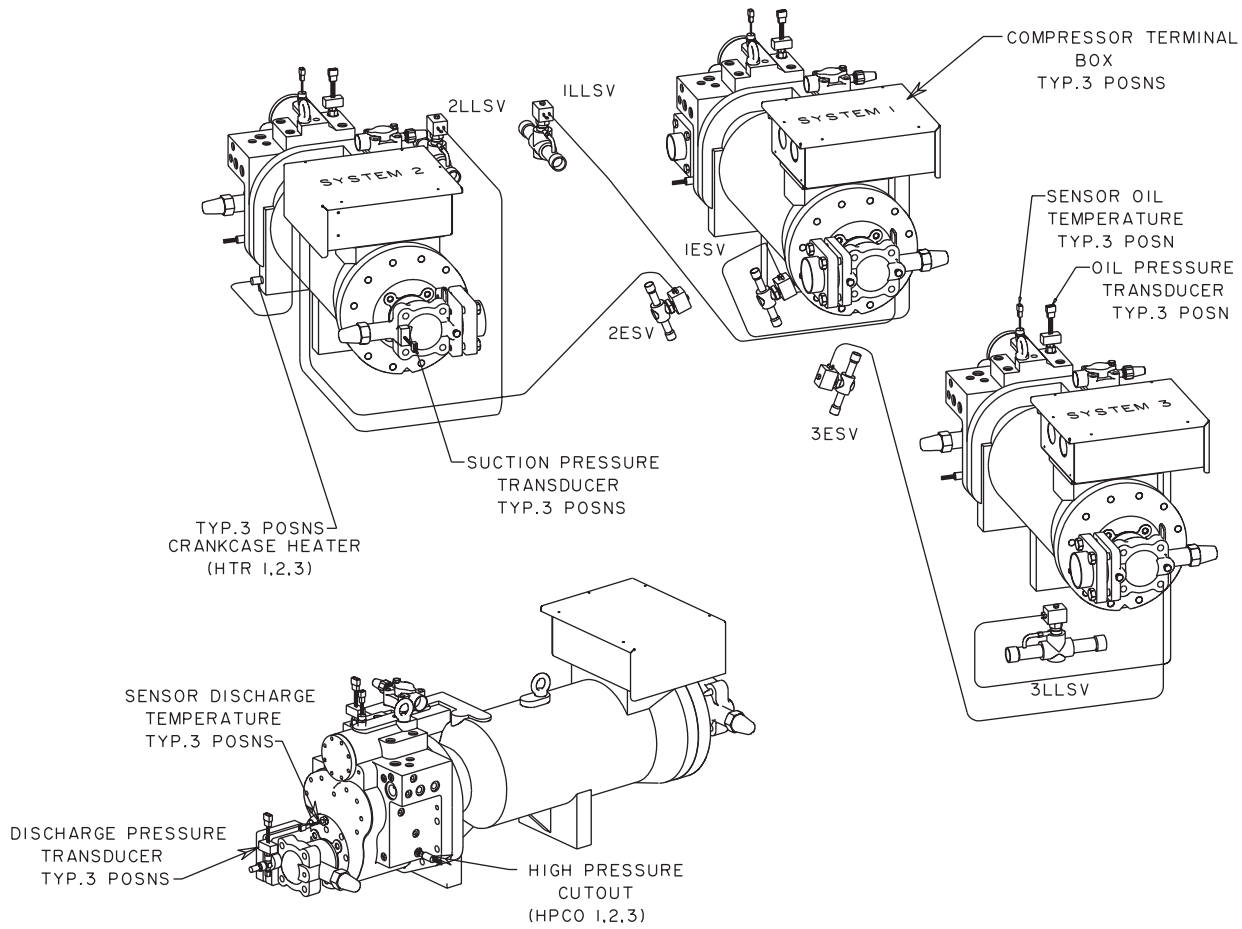
## FRONT MODULE



**FIG. 14 – CONNECTION DIAGRAM SYSTEM WIRING**

# CONNECTION DIAGRAM SYSTEM WIRING STANDARD & REMOTE EVAP. UNITS

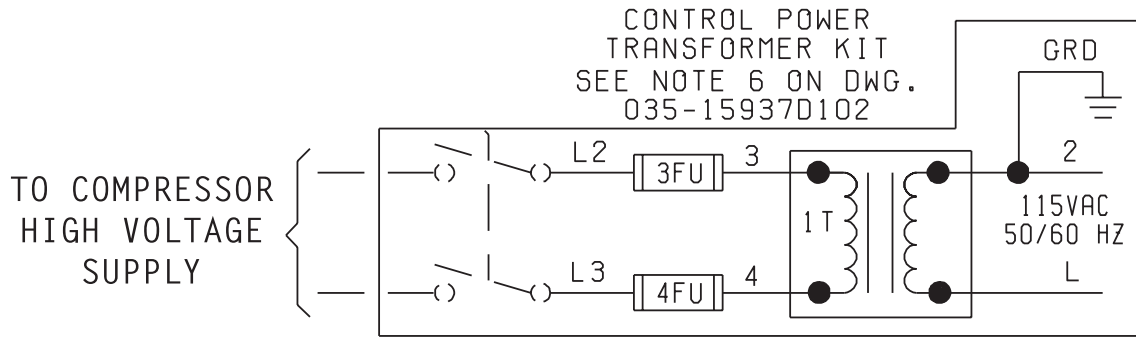
COMPRESSORS  
(SYSTEMS 1,2,3)



LD04185

FIG. 15 – CONNECTION DIAGRAM SYSTEM WIRING

# CONTROL POWER TRANSFORMER KIT



LD04186

**FIG. 16** – CONTROL POWER TRANSFORMER KIT

