	Form Number 201.18-RP2 (LS01)	502
	Supersedes: None	
LITERATURE SUPPLEMENT	File with: 201.18-RP2 (900)	
Subject: Cooler barrel number revision (See page 5) Subject: Revised RELIEF VALVES AND HP CUTOOUT SWITCH (See pages 14 & 15) Subject: Revised CONTROL PANEL COMPONENTS (See pages 26 & 27)		

NOTE: The pages contained within this supplement may be substituted for pages in 201.18-RP2 (900)

**MODELS YCAS0373, 0403, 0453 and YCAS0503
50 HERTZ**

Revised cooler barrel (Item 1) from 025-30200-000 to 025-40490-000 on Table 1, Page 5.

**MODELS YCAS0543, 0573, 0623 and YCAS0653
50 HERTZ**

Revised cooler barrel (Item 1) from 025-30201-000 to 025-40494-000 on Table 1, Page 5.

**MODELS YCAS0373, 0403, 0453, 0503, 0543, 0573, 0623,
and YCAS0653
50 HERTZ**

Revised artwork (LD05257, LD05269 and LD05271) for Relief Valve and HP Cutout Switch.

**MODELS YCAS0373, 0403, 0453, 0503, 0543, 0573, 0623,
and YCAS0653
50 HERTZ**

Added #44 KEYPAD, #45 SMART I/O EXPANSION BOARD and #46 EPROM to Table 10 and Figure 16 (See pages 26 & 27)



380-415/3/50
MODELS ONLY

EVAPORATOR COMPONENTS

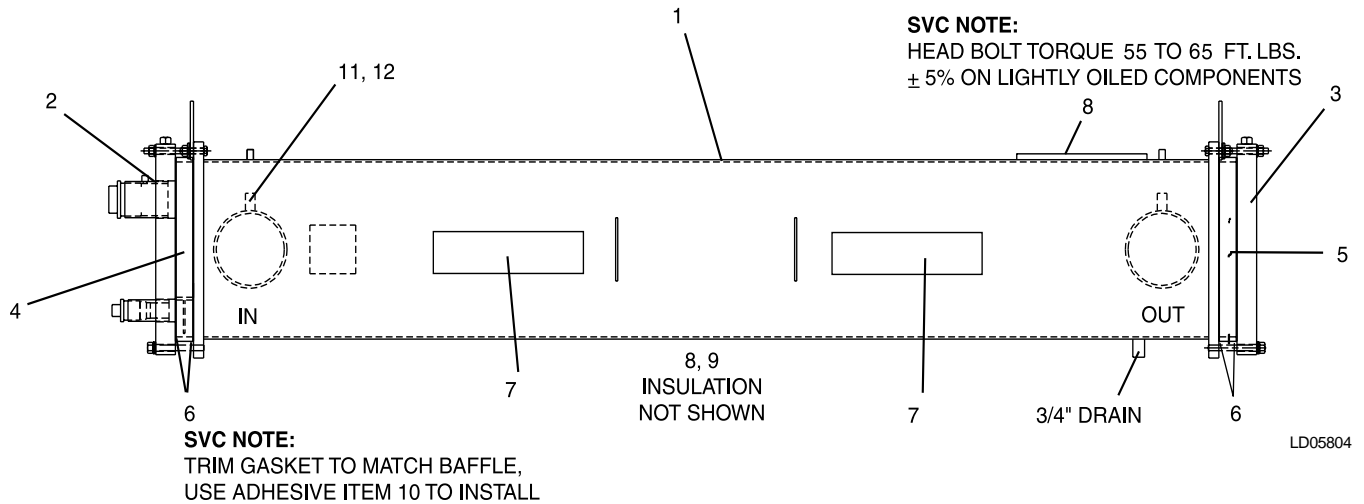


FIG. 1 – EVAPORATOR COMPONENTS

- 150# COOLER FLOW SWITCH 024-26116-000 (PIN 38 in Model No. is X; see page 4.)
- 300# COOLER FLOW SWITCH 024-12144-000 (PIN 38 in Model No. is 3; see page 4.)

TABLE 1 – EVAPORATOR COMPONENTS

ITEM NUMBER	QTY. PER UNIT	DESCRIPTION	DWP	UNIT MODEL YCAS0130 THRU YCAS0140	UNIT MODEL YCAS0150 THRU YCAS0230
1	1	Cooler, less Heater & Insulation (Items 2 thru 6)	150 300	375-40490-000 375-30085-000	375-40494-000 375-30082-000
2	1	Head, Connection End	ALL	375-30231-000	375-30219-000
3	1	Head, Back End	ALL	075-30234-000	375-30221-000
4	1	Baffle, Pass, Conn. End	ALL	375-30235-000	375-30215-000
5	1	Baffle, Pass, Back End	ALL	075-30238-000	075-20218-000
6 ^s	4	Gasket, Pass Baffle and Head	ALL	075-30239-000	075-30223-000
7 ^s	2	Heater, Cooler 280 Watt	ALL	025-22691-000	025-22691-000
8	3.5	Insulation (3/4" x 49" x 65")	ALL	010-05997-000	010-05997-000
9*	2.5	Insulation (1-1/2" x 49" x 65")	ALL	010-05998-000	010-05998-000
10	1	Adhesive, 1.75 oz. Btl. (Not Shown)	ALL	013-02293-000	013-02293-000
11	2	Pipe Coupling 1/2"	ALL	023-01564-000	023-01564-000
12	2	Well, Thermo CU 1/2" x 9-1/2"	ALL	026-33627-000	026-33627-000

^s = Recommended Spare Parts

* Use on 1 1/2 insulated coolers only.

RELIEF VALVES AND HP CUTOUT SWITCH (CONT'D)

LINE NUMBER APPLICATIONS		
LINE NUMBER	APPLICATION	P.I.N. POS.42 OF MODEL #
-001	ASME	A
-401	FRENCH	F
-901	GERMAN	T

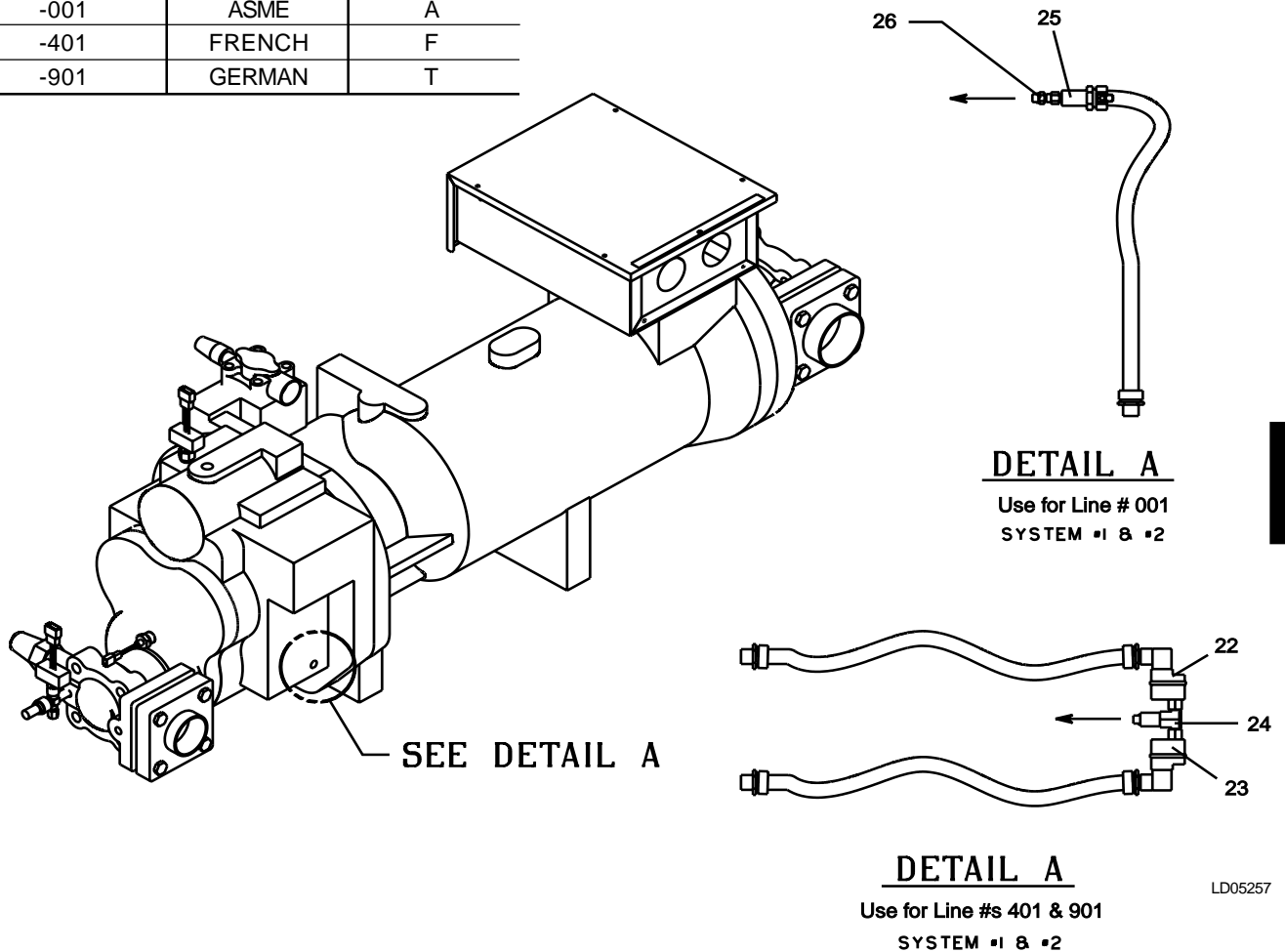


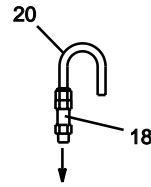
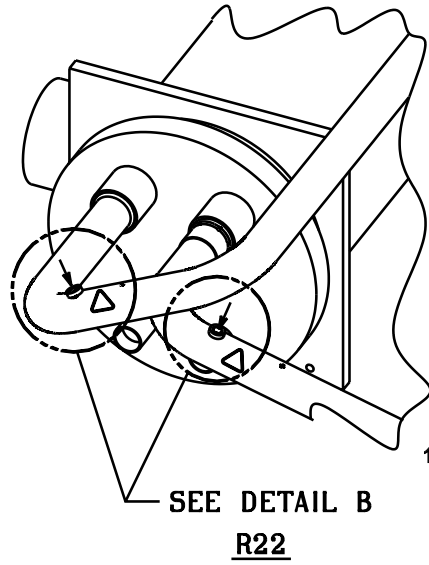
FIG. 6 – RELIEF VALVES AND HP CUTOUT SWITCH (REF. TABLE 5, PAGE 14)

TABLE 5 – RELIEF VALVES AND HP CUTOUT SWITCH (SEE FIG. 6 AND 6A, PAGES 14 AND 15)

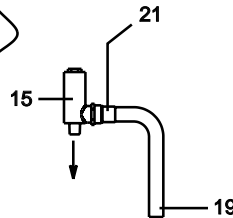
ITEM	QUANTITY PER CHILLER	DESCRIPTION	SYSTEM	ALL MODELS
15	2	Low Side Relief, Angle V 21 Bar	Both	022-09793-000
16	2	High Side Relief, Angle V 31 Bar	Both	022-09794-000
17	2	High Side Relief, Str Thru 405 PSIG	Both	022-08863-000
18	2	Low Side Relief, Str Thru 300 PSIG	Both	022-03056-000
19	2	Tube for 15, 16, 17	Both	075-30993-000
20	2	Tube for 18	Both	375-30919-000
21	2	Adapter for 15,16, 17	Both	023-00124-000
22	2	HP Sw, Man Reset 27.9 Bar	Both	025-34119-000
23	2	HP Sw, Man Reset 27.2 Bar	Both	025-34120-000
24	2	Tee for 22/23	Both	023-00972-000
25	2	HP Sw, NC, Auto Reset, 405 PSIG	Both	025-30480-000
26	2	O-Ring, 3-904	Both	028-13540-000

RELIEF VALVES AND HP CUTOUT SWITCH

Piping

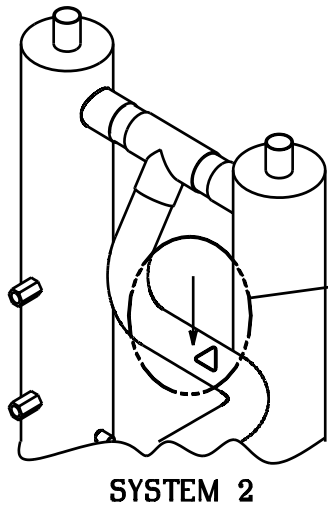


DETAIL B
Use for Line #s 001 & 401
SYSTEM #1 & #2



DETAIL B
Use for Line # 901
SYSTEM #1 & #2

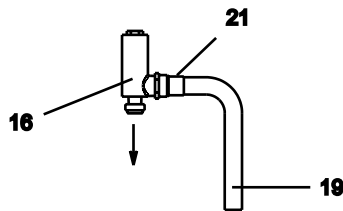
LD05269



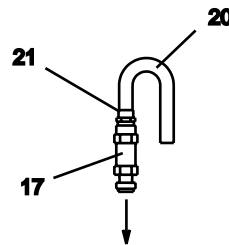
DRILL $\varnothing 1.032$ HOLE INTO TOP OF DISCHARGE PIPE AT THIS APPROXIMATE LOCATION, THEN BRAZE BUTTON (ITEM 2) INTO PIPE PER MOS 15-2-13 WITH ITEM 20. MAKE CERTAIN THAT THERE IS NO PRESSURE IN THE DISCHARGE LINE BEFORE DRILLING HOLE. ALSO MAKE CERTAIN THAT NO DRILLING CHIPS OR FOREIGN MATTER FALL INSIDE PIPE OR REMAIN INSIDE PIPE PRIOR TO BRAZING BUTTON.

SEE DETAIL C

LD05270



DETAIL C
Use for Line #901
SYSTEM #1 & #2



DETAIL C
Use for Line #401
SYSTEM #1 & #2

LD05271

FIG. 6 – RELIEF VALVES AND HP CUTOUT SWITCH (REF. TABLE 5, PAGE 14)

CONTROL PANEL COMPONENTS

TABLE 10 – CONTROL PANEL COMPONENTS (SEE FIGS. 16 AND 17, PAGES 27 AND 28)

ITEM NO.	QUANTITY	DESCRIPTION	PART NO.	NOTE
1	1	Door For Micro-Compartment	RAM-201704	2-Piece Bolted Control/Option Panel
	1	Door for Options Compartment	RAM-201733	
1	1	Door For Micro-Compartment	071-03616-000	1-Piece Control/Option Panel
	1	Door For Options Compartment	071-03617-000	
2 ^s	1	MicroBoard	031-01095-002	115V / 24V
3 ^s	1	Power Supply Board	031-01094-000	
4 ^s	2	Relay Circuit Board	031-01093-000	
5	1	Transformer, Control 2T	025-27911-000	
6	1	Kit, Terminal Block	025-33760-000	
7	1	Kit, Terminal Block	025-33761-000	
8	2	Catch, Magnetic (Not Shown)	029-20878-000	
9	22	Screw, Tap Thread	021-13789-000	
10	1	Tag, Identification	035-15183-000	
11	28	Nut, Expansion	021-14661-000	
12	28	Screw, Tap Thread	021-14667-000	
13	4	Lockwasher, TH Int 3/8	021-01155-000	
14	4	Nut, Hex 3/8-16 UNC-2B	021-00467-000	
15	3	Circuit Breaker, 6A	024-30913-000	
16	24	Nut/Washer Assembly (KEPS)	021-18024-000	
17	2	Strap, Cable	025-18167-000	
18	1	Transformer, Control 3T	025-18452-000	
19	22	Screw, Tap, Pan Head	021-13789-000	
20	4	Lockwasher, Hel. Spring,	021-17576-000	
21	4	Nut, Hex	021-10056-000	
22	2	Switch, On/Off	024-25517-000	
23	1	Display	031-01110-000	
24	1	Ribbon Cable	071-02253-251	
25	4	Ribbon Cable	071-02253-252	
26	1	Ribbon Cable	071-02253-253	
27	3	Clamp, Ribbon Wire	025-25156-000	
28	1	Transformer, Control 4T	025-30889-000	115V / 24V
29	4	Spacer, Nylon	021-17575-000	See Page 31
30	1	Harness, Hinged Panel	571-01226-211	
31	1	Harness, Main Panel	571-02253-201	
32	1	Connector, Cable Strap	025-08301-000	
33	1	Relay, Control	024-25598-000	
34	1	EPROM	031-01798-002	
35	1	Label, Caution	035-15989-000	
36	1	Label, Warning	035-11929-000	
37	2	Connector, Cable Strap	025-12282-000	
38	1	I/O Expansion Board	031-01781-000	
39	1	Ribbon Cable	071-02253-254	Use with Plugs 40, 41, and 42
40	Varies	Plug, 6 Pin (Microboard)	025-28382-000	
41	Varies	Plug, 9 Pin (Microboard)	025-28383-000	
42	Varies	Plug, 12 Pin (Microboard)	025-28384-000	
43	Varies	Socket, Wire End	025-28386-000	
44	1	Keypad (Not Shown)	024-30910-000	
45	1	Smart I/O Expansion Board	031-01793-001	
46	1	EPROM (Use w/Smart I/O Board)	031-02018-001	

^s Recommended Spare Part

CONTROL PANEL COMPONENTS - CONT'D

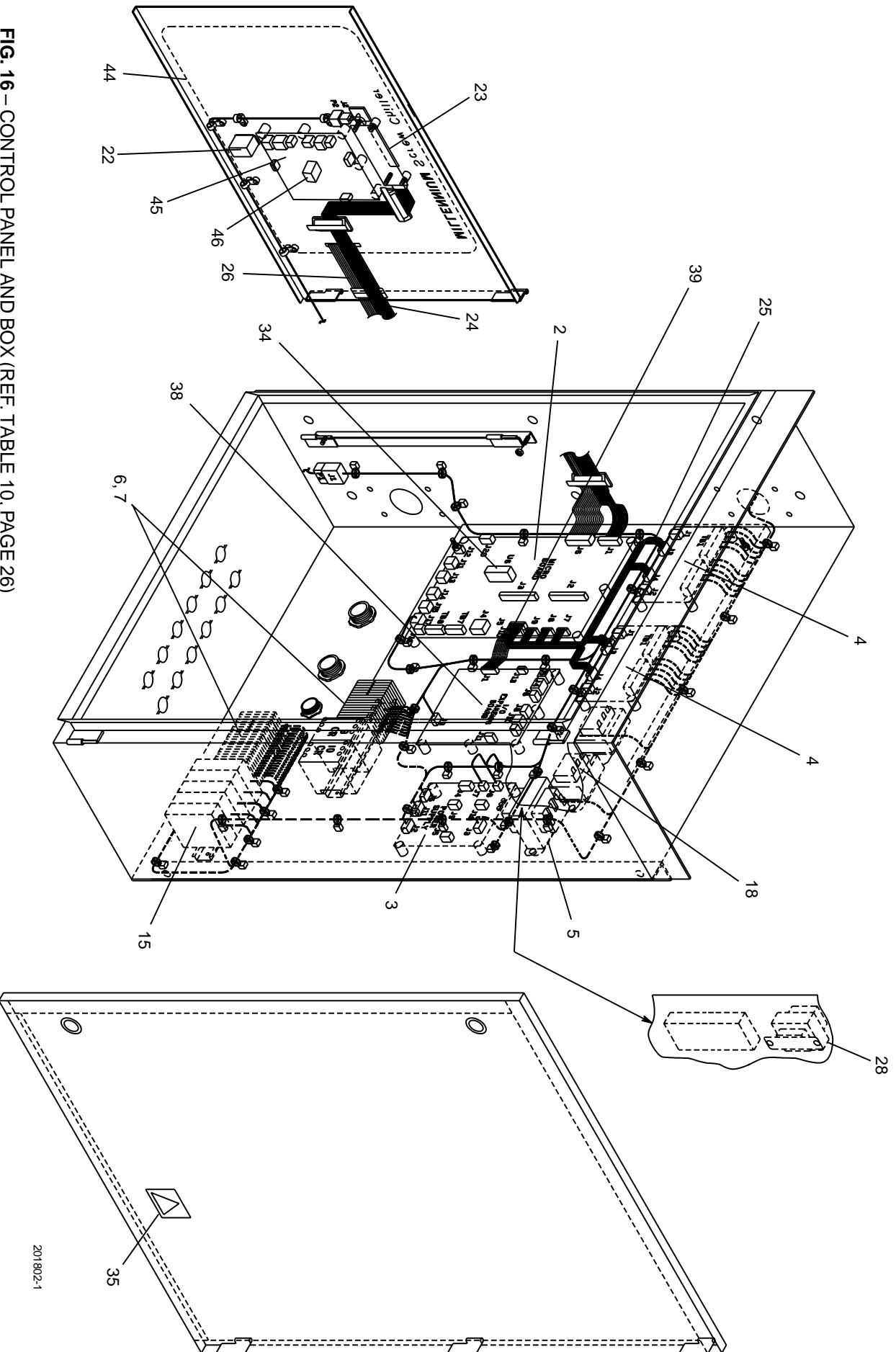


FIG. 16 – CONTROL PANEL AND BOX (REF: TABLE 10, PAGE 26)