



Form Number 201.18-RP1 (LS01)

502

Supercedes: None

LITERATURE SUPPLEMENT

File with: 201.18-RP1 (900)

Subject: Cooler barrel number revision (See page 5)

Subject: Revised RELIEF VALVES AND HP CUTOUT SWITCH (See pages 11 & 12)

Subject: Revised CONTROL PANEL COMPONENTS (See pages 24 & 25)

NOTE: The pages contained within this supplement may be substituted for pages in 201.18-RP1 (900)

MODELS YCAS0130 and 0140

60 HERTZ

Revised cooler barrel (Item 1) from 025-30200-000 to 025-40490-000 on Table 1, Page 5.

MODELS YCAS0150, 0160, 0170, 0180, 0200, 0210 and YCAS0230

60 HERTZ

Revised cooler barrel (Item 1) from 025-30201-000 to 025-40494-000 on Table 1, Page 5.

MODELS YCAS0130, 0140, 0150, 0160, 0170, 0180, 0200, 0210 and YCAS0230

60 HERTZ

Revised artwork (LD05257, LD05269 and LD05271) for Relief Valve and HP Cutout Switch.

MODELS YCAS0130, 0140, 0150, 0160, 0170, 0180, 0200, 0210 and YCAS0230

60 HERTZ

Added #45 SMART I/O EXPANSION BOARD and #46 EPROM to Table 10 and Figure 14 (See pages 24 & 25)



200-3-60
230-3-60
315-3-60
460-3-60
575-3-60

MODELS ONLY

EVAPORATOR COMPONENTS

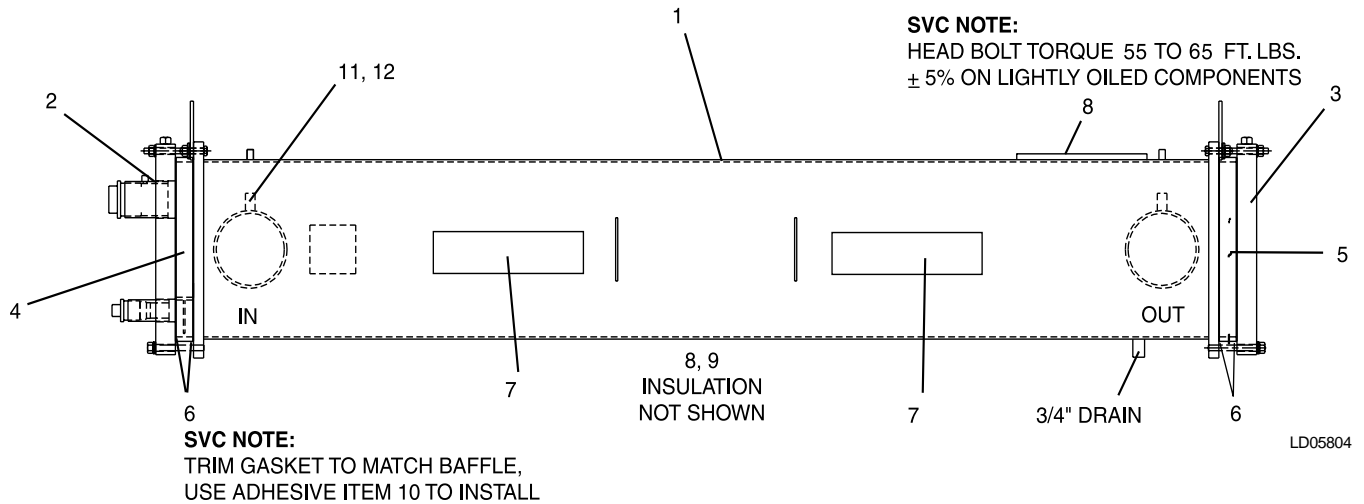


FIG. 1 – EVAPORATOR COMPONENTS

- 150# COOLER FLOW SWITCH 024-26116-000 (PIN 38 in Model No. is X; see page 4.)
- 300# COOLER FLOW SWITCH 024-12144-000 (PIN 38 in Model No. is 3; see page 4.)

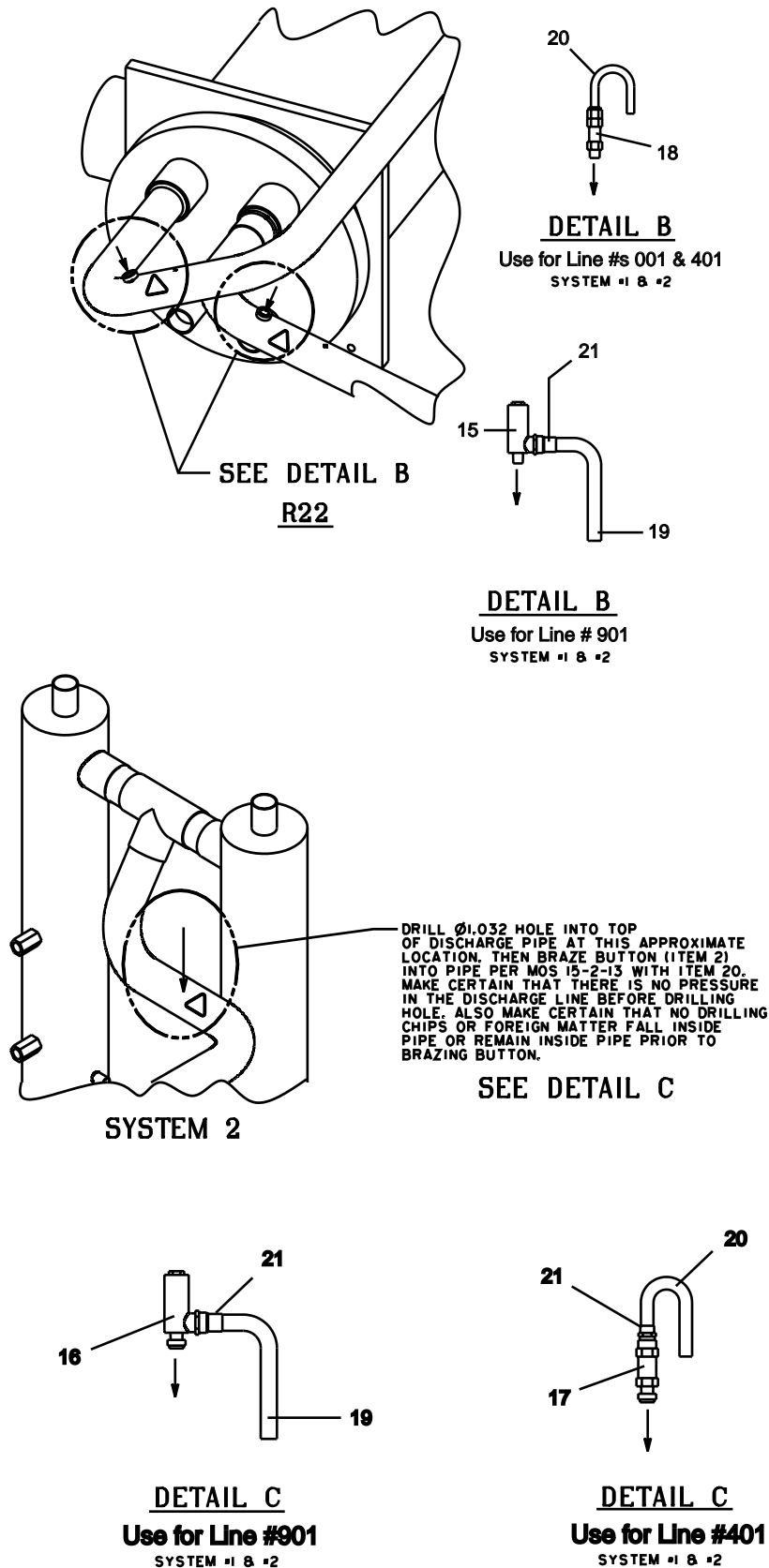
TABLE 1 – EVAPORATOR COMPONENTS

ITEM NUMBER	QTY. PER UNIT	DESCRIPTION	DWP	UNIT MODEL YCAS0130 THRU YCAS0140	UNIT MODEL YCAS0150 THRU YCAS0230
1	1	Cooler, less Heater & Insulation (Items 2 thru 6)	150	375-40490-000	375-40494-000
			300	375-30085-000	375-30082-000
2	1	Head, Connection End	ALL	375-30231-000	375-30219-000
3	1	Head, Back End	ALL	075-30234-000	375-30221-000
4	1	Baffle, Pass, Conn. End	ALL	375-30235-000	375-30215-000
5	1	Baffle, Pass, Back End	ALL	075-30238-000	075-20218-000
6 ^s	4	Gasket, Pass Baffle and Head	ALL	075-30239-000	075-30223-000
7 ^s	2	Heater, Cooler 280 Watt	ALL	025-22691-000	025-22691-000
8	3.5	Insulation (3/4" x 49" x 65")	ALL	010-05997-000	010-05997-000
9*	2.5	Insulation (1-1/2" x 49" x 65")	ALL	010-05998-000	010-05998-000
10	1	Adhesive, 1.75 oz. Btl. (Not Shown)	ALL	013-02293-000	013-02293-000
11	2	Pipe Coupling 1/2"	ALL	023-01564-000	023-01564-000
12	2	Well, Thermo CU 1/2" x 9-1/2"	ALL	026-33627-000	026-33627-000

^s = Recommended Spare Parts

* Use on 1 1/2 insulated coolers only.

RELIEF VALVES AND HP CUTOUT SWITCH



LD05269

LD05270

LD05271

Piping

FIG. 6 – RELIEF VALVES AND HP CUTOUT SWITCH (REF. TABLE 5, PAGE 12)

RELIEF VALVES AND HP CUTOUT SWITCH (CONT'D)

LINE NUMBER APPLICATIONS		
LINE NUMBER	APPLICATION	P.I.N. POS.42 OF MODEL #
-001	ASME	A
-401	FRENCH	F
-901	GERMAN	T

Piping

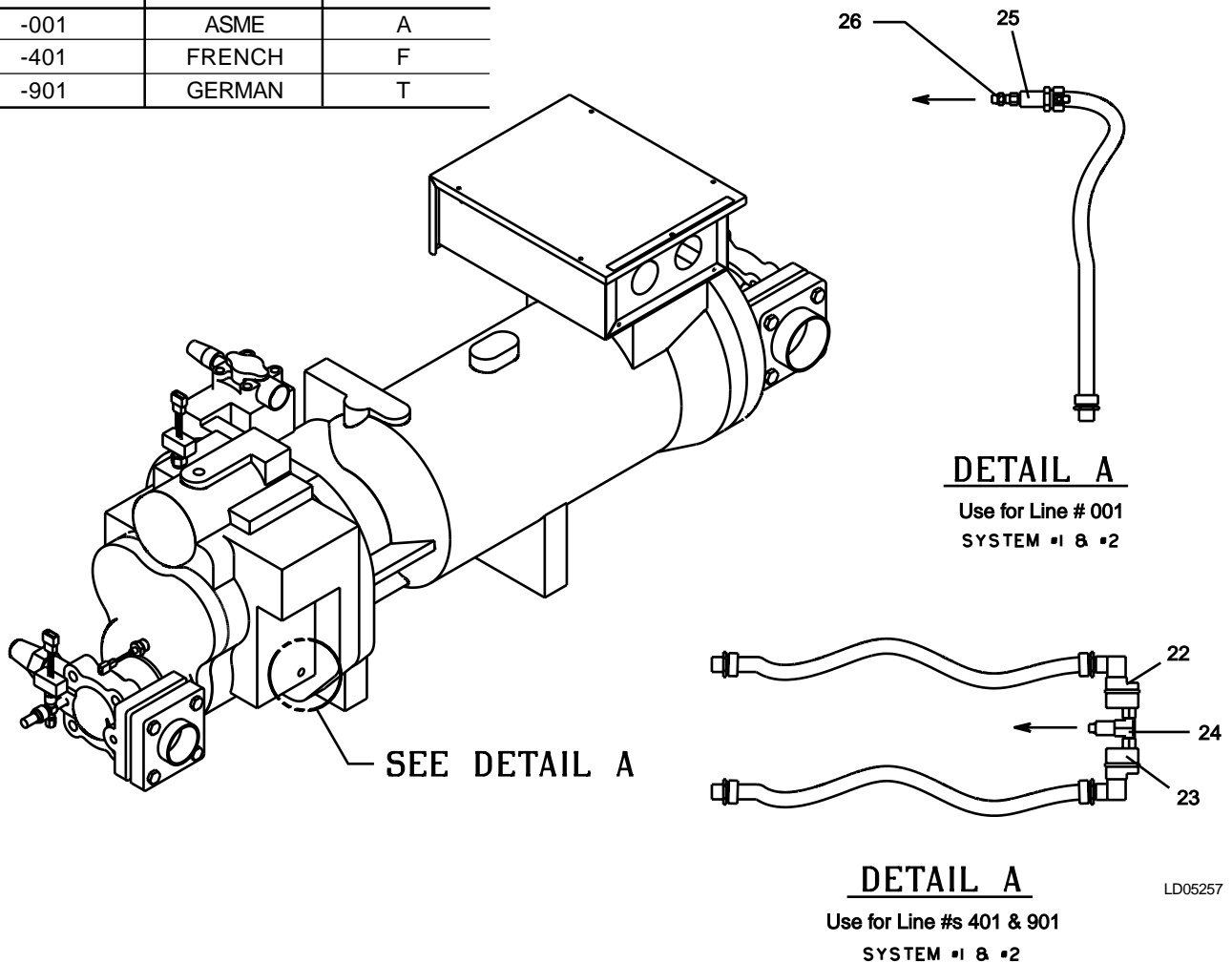


FIG. 6 (CONT'D) – RELIEF VALVES AND HP CUTOUT SWITCH (REF. TABLE 5, PAGE 12)

TABLE 5 – RELIEF VALVES AND HP CUTOUT SWITCH (SEE FIG. 6, PAGES 11 AND 12)

ITEM	QUANTITY PER CHILLER	DESCRIPTION	SYSTEM	ALL MODELS
15	2	Low Side Relief, Angle V 21 Bar	Both	022-09793-000
16	2	High Side Relief, Angle V 31 Bar	Both	022-09794-000
17	2	High Side Relief, Str Thru 405 PSIG	Both	022-08863-000
18	2	Low Side Relief, Str Thru 300 PSIG	Both	022-03056-000
19	2	Tube for 15, 16, 17	Both	075-30993-000
20	2	Tube for 18	Both	375-30919-000
21	2	Adapter for 15,16, 17	Both	023-00124-000
22	2	HP Sw, Man Reset 27.9 Bar	Both	025-34119-000
23	2	HP Sw, Man Reset 27.2 Bar	Both	025-34120-000
24	2	Tee for 22/23	Both	023-00972-000
25	2	HP Sw, NC, Auto Reset, 405 PSIG	Both	025-30480-000
26	2	O-Ring, 3-904	Both	028-13540-000

CONTROL PANEL COMPONENTS

TABLE 10 – CONTROL PANEL COMPONENTS (SEE FIGS. 14 AND 15, PAGES 25 AND 26)

ITEM NO.	QUANTITY	DESCRIPTION	PART NO.	NOTE
1	1	Door For Micro-Compartment	RAM-201704	2-Piece Bolted Control/Option Panel
	1	Door for Options Compartment	RAM-201733	
1	1	Door For Micro-Compartment	071-03616-000	1-Piece Control/Option Panel
	1	Door For Options Compartment	071-03617-000	
2 ^s	1	MicroBoard	031-01095-002	115V / 24V
3 ^s	1	Power Supply Board	031-01094-000	
4 ^s	2	Relay Circuit Board	031-01093-000	
5	1	Transformer, Control 2T	025-27911-000	
6	1	Kit, Terminal Block	025-33760-000	
7	1	Kit, Terminal Block	025-33761-000	
8	2	Catch, Magnetic (Not Shown)	029-20878-000	
9	22	Screw, Tap Thread	021-13789-000	
10	1	Tag, Identification	035-15183-000	
11	28	Nut, Expansion	021-14661-000	
12	28	Screw, Tap Thread	021-14667-000	
13	4	Lockwasher, TH Int 3/8	021-01155-000	
14	4	Nut, Hex 3/8-16 UNC-2B	021-00467-000	
15	3	Circuit Breaker, 6A	024-30913-000	
16	24	Nut/Washer Assembly (KEPS)	021-18024-000	
17	2	Strap, Cable	025-18167-000	208/240 Primary / 24V sec. Used for 110 / 12V
18	1	Transformer, Control 3T	025-18452-000	
19	22	Screw, Tap, Pan Head	021-13789-000	
20	4	Lockwasher, Hel. Spring,	021-17576-000	
21	4	Nut, Hex	021-10056-000	
22	2	Switch, On/Off	024-25517-000	
23	1	Display	031-01110-000	
24	1	Ribbon Cable	071-02253-251	
25	4	Ribbon Cable	071-02253-252	
26	1	Ribbon Cable	071-02253-253	
27	3	Clamp, Ribbon Wire	025-25156-000	115V / 24V
28	1	Transformer, Control 4T	025-30889-000	
29	4	Spacer, Nylon	021-17575-000	
30	1	Harness, Hinged Panel	571-01226-211	
31	1	Harness, Main Panel	571-02253-201	
32	1	Connector, Cable Strap	025-08301-000	
33	1	Relay, Control	024-25598-000	
34	1	EPROM	031-01798-002	
35	1	Label, Caution	035-15989-000	
36	1	Label, Warning	035-11929-000	
37	2	Connector, Cable Strap	025-12282-000	See Page 29
38	1	I/O Expansion Board	031-01781-000	
39	1	Ribbon Cable	071-02253-254	
40	Varies	Plug, 6 Pin (Microboard)	025-28382-000	
41	Varies	Plug, 9 Pin (Microboard)	025-28383-000	
42	Varies	Plug, 12 Pin (Microboard)	025-28384-000	
43	Varies	Socket, Wire End	025-28386-000	
44	1	Keypad (Not Shown)	024-30910-000	
45	1	Smart I/O Expansion Board	031-01793-001	
46	1	EPROM (Use w/Smart I/O Board)	031-02018-001	

^s Recommended Spare Part

201802-1

CONTROL PANEL COMPONENTS - CONT'D

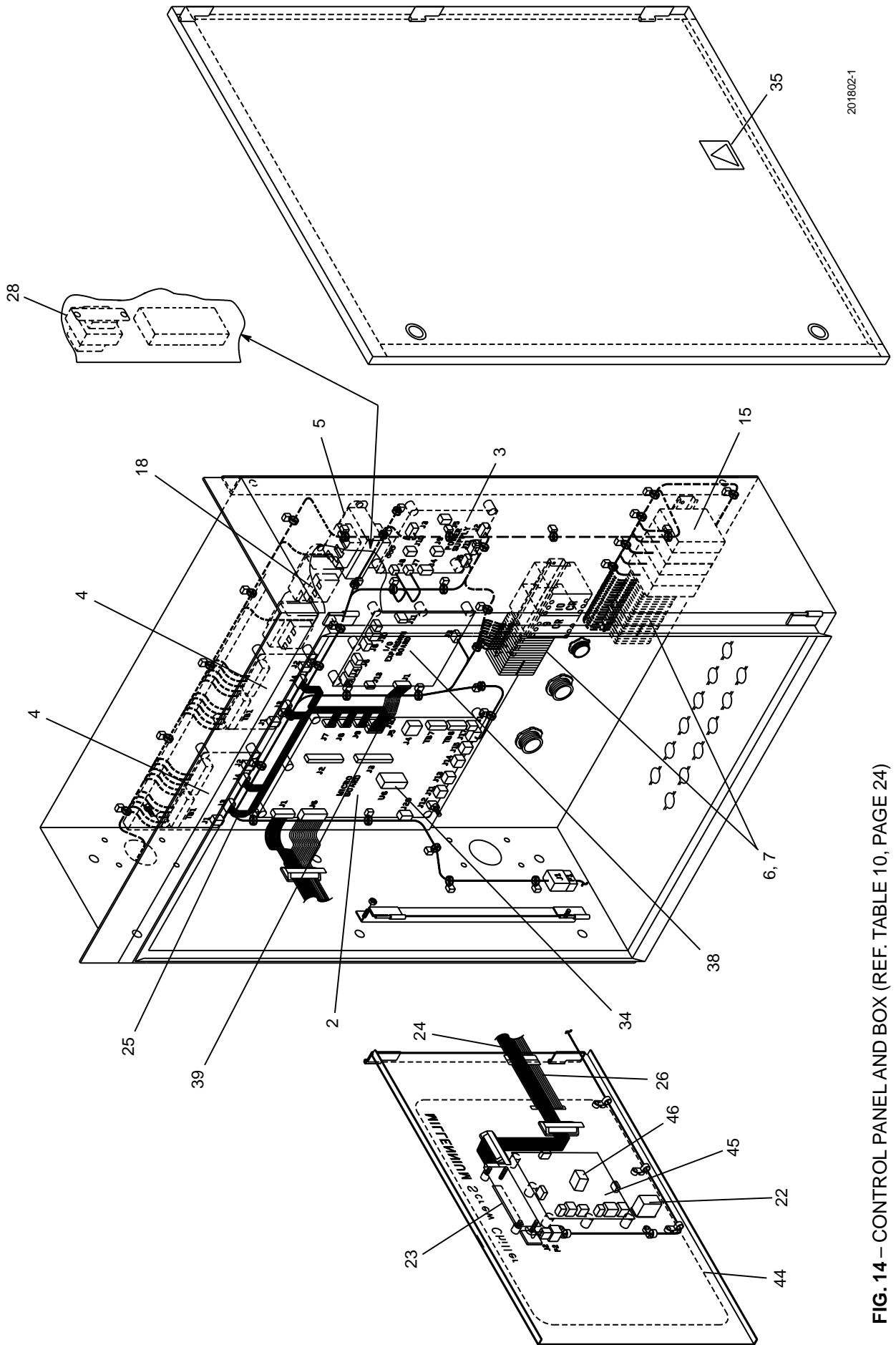


FIG. 14 – CONTROL PANEL AND BOX (REF. TABLE 10, PAGE 24)

Control Panel