



Millennium™
ROTARY SCREW LIQUID CHILLERS

RENEWAL PARTS

Supersedes: Nothing

Form 160.80-RP1 (1099)

**MODEL YS BA CB S0 THRU YS FA FB S5
(STYLE E)
100 THRU 675 TONS
(315 THRU 2375 KW)**



00202VIP

R-22 and R-134a

TABLE OF CONTENTS

NOMENCLATURE	3
AVAILABLE COMPRESSOR/SHELL/MOTOR COMBINATIONS	3
UNITS COMPONENTS	4
CURRENT TRANSFORMERS KITS	14
OIL SEPARATOR	14
ORIFICE PLATE	14
WATER BOX GASKETS	15
TUBES	16
ISOLATORS	17
MULTIPLE-UNIT SEQUENCE KIT CONTROLS	18
MISCELLANEOUS & ACCESSORIES	19

LIST OF FIGURES

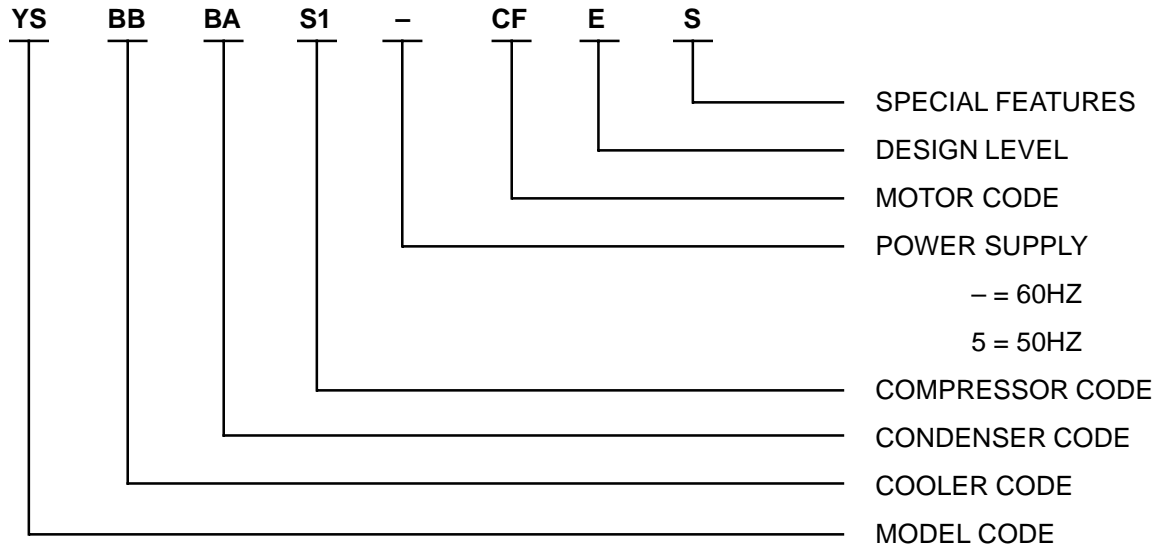
1	UNIT FRONT VIEW	5
2	UNIT REAR VIEW	6
3	UNIT END VIEW	8
4	OIL EDUCTOR SCHEMATIC	10
5	OIL PIPING SCHEMATIC	11
6	OPTIONAL DUAL OIL FILTER PIPING SCHEMATIC	12
7	CAPACITY CONTROL PIPING SCHEMATIC	13
8	4-WAY SOLENOID VALVE AND SUBPLATE	13

FREQUENT REPLACEABLE PARTS

ITEM NUMBER	DESCRIPTION	PART NUMBER	QTY
18	TEFLON SEAL WASHER	028-12709-000	6
19*	FILTER - DRIER SUCTION	026-32839-000	2
27*	FILTER - DRIER	026-32841-000	1
37	OIL FILTER ELEMENT	026-32831-000	1
38	O-RING, OIL FILTER	026-32000-000	1

* Each filter/drier Item #19 and #27 requires (2) teflon seal washers Item #18.

NOMENCLATURE



AVAILABLE COMPRESSOR/SHELL/MOTOR COMBINATION

COMPRESSOR CODE	COOLER SHELL	CONDENSER SHELL	MOTOR CODE		
			R-22, 60 HZ	R-134a, 60 HZ	R-22, 50 HZ
S0	BA, BB	BA, BB, CA, CB	CF, CG, CH	CF, CG, CH	5 CC, 5 CD
	CA, CB	BA, BB, CA, CB			
S1	BA, BB	BA, BB, CA, CB	CF, CG, CH, CJ, CK	CF, CG, CH, CJ, CK	5 CC, 5 CD, 5 CE, 5 CF
	CA, CB	BA, BB, CA, CB			
S2	CA, CB	CA, CB, DA, DB	CG, CH, CJ, CK, CL, CM	CF, CG, CH, CJ, CK, CL, CM	5 CD, 5 CE, 5 CF, 5 CG, 5 CH
	DA, DB, DC	CA, CB, DA, DB			
S3	DA, DB, DC	CA, CB, DA, DB	CJ, CK, CL, CM, CN, CP, CR	CG, CH, CJ, CK, CL, CM, CN, CP, CR	5 CF, 5 CG, 5 CH, 5 CI, 5 CJ, 5 CK
S4	EA, EB, EC	EA, EB, FA, FB	CK, CL, CM, CN, CP, CR, CS, CT, CU, CV	CJ, CK, CL, CM, CN, CP, CR, CS, CT, CU, CV	5 CF, 5 CG, 5 CH, 5 CI, 5 CJ, 5 CK, 5 CL, 5 CM, 5 CN, 5 CO
	FA, FB, FC	FA, FB			
S5	FA, FB, FC	FA, FB		CK, CL, CM, CN, CP, CR, CS, CT, CU, CV	

COMPRESSOR CODE	COOLER SHELL	CONDENSER SHELL	MOTOR CODE
S0	BA, BB	BA, BB, CA, CB	5 CC, 5 CD
	CA, CB	BA, BB, CA, CB	
S1	BA, BB	BA, BB, CA, CB	5 CC, 5 CD, 5 CE, 5 CF
	CA, CB	BA, BB, CA, CB	
S2	BA, BB	BA, BB, CA, CB	5 CC, 5 CD, 5 CE, 5 CF, 5 CG, 5 CH
	CA, CB	BA, BB, CA, CB, DA, DB	
	DA, DB, DC	CA, CB, DA, DB	
S3	CA, CB	CA, CB, DA, DB	5 CC, 5 CD, 5 CE, 5 CF, 5 CG, 5 CH, 5 CI, 5 CJ, 5 CK
	DA, DB, DC	CA, CB, DA, DB	
S4	DA, DB, DC	CA, CB, DA, DB	5 CE, 5 CF, 5 CG, 5 CH, 5 CI, 5 CJ, 5 CK, 5 CL, 5 CM, 5 CN, 5 CO
	EA, EB, EC	EA, EB, FA, FB	
	FA, FB, FC	EA, EB, FA, FB	
S5	EA, EB, EC	EA, EB, FA, FB	5 CF, 5 CG, 5 CH, 5 CI, 5 CJ, 5 CK, 5 CL, 5 CM, 5 CN, 5 CO
	FA, FB, FC	EA, EB, FA, FB	

UNIT COMPONENTS

ITEM NUMBER	DESCRIPTION	PART NUMBER	QUANTITY PER UNIT	REFERENCE FIGURE
1	Valve, Angle Stop - Rotalock	022-09573-000	3	1,2
2	Cap,Flare	023-00984-000	3	1,2
3	Gasket, Seal	028-04836-000	3	1,2
4	Shim, Motor Mounting	066-87439-000	8	1
5	Shim, Motor Mounting	066-92388-000	4	1
6	Shim, Motor Mounting	066-92839-000	4	1
7	Bottle, Oil	028-10579-000	1	1
8	Rupture Disk, 2 inch, Oil Separator S0-S1 R-22 S0-S1 R-134a S2-S3 R-22 S2-S3 R-134a S4 R-22 S4 R-134a S5 R-22 S5 R-134a	026-36503-001 026-36503-001 026-36503-002 026-36503-001 026-36503-003 026-36503-002 026-36503-004 026-36503-003	1	1,3
8A	Rupture Disk, 2 inch S4 & S5 Compressors	026-36503-004	1	1A
9	Safety Head, 2 inch Rupture Disk	026-32293-000	1 (S0-S3) 2 (S4-S5)	1, 1A, 3
10	Gasket, Round Rupture Disk	028-10386-028	2 (S0-S3) 5 (S4-S5)	1, 1A, 3 1, 1A
11	Switch, High Pressure Cutout -270 psig	025-30970-000	1	1, 3
12	Valve, Safety Relief S0-S1 Chillers - 3/4 inch S2 Chiller - 3/4 inch (B & C Cooler Code) S2 Chiller - 3/4 inch (D Cooler Code) S4-S5 Chillers - 1 inch	022-09501-000 022-09501-000 022-09501-000 022-09505-000	4 5 4 5	1,2, 3
14	Valve 3-way stop for relief valves	022-09515-000	1 (S0-S1) 2 (S2-S5)	1, 2, 3
14A	Connector, Union 7/8-14 adjustable	023-17643-000		1, 2, 3
15	Well, Sensor (cooler and condenser water)	026-32328-000	4	1, 2
16	Sensor, Temp (cooler and condenser water)			
	K ohm	025-29964-000	4	1, 2
17	Valve, Angle Stop - Rotalock	022-09756-000	4	1, 1B, 2B, 4
18	Filer/Drier, Oil Separator (requires two of item 54)	026-32841-000	1	1, 2, 3, 4
19	Filer/Drier, Suction (requires two of item 54)	026-32839-000	2	1,4
20	Eductor, Oil Return S0, S1 Chillers - R22 S0, S1 Chillers - R134a S2, S3 Chillers - R22 S2, S3 Chillers - R134a S4, S5 Chillers - R22 S4, S5 Chillers - R134a	026-35381-000 026-35383-000 026-35381-000 026-35383-000 026-35382-000 026-35384-000	1 1 1 1 1 1	1, 1B., 4, 5
21	Valve, Angle Stop - Transducer Isolation	022-09577-000	5	1, 1A, 3, 5
22	Gasket, Compressor Suction S0,S1 Compressors - 9-7/8" OD, 6-5/8" ID S2,S3 Compressors - 12-1/8" OD, 8-5/8" ID S4,S5 Compressors - 14-1/4" OD, 10-3/4" ID	028-13574-000 028-13575-000 028-13576-000	1	1
23	Sensor, Temp (oil and discharge temp) 50K ohm includes Item #63 O-ring	025-31301-000	2	1C,3, 5
25	Valve, 1/4 inch Pressure Release	022-09783-000	3	1C, 2A, 5
28	Valve Angle Stop, Oil Separator Filter/Drier	022-09792-000	1	2, 4
29	Sight Glass	023-17197-000	4	1, 2
31	Float Switch, Oil Level Safety	024-30901-000	1	2

* Special Primore Rotalock Fitting - Requires (2) teflon seal washers P/N 028-12709-000

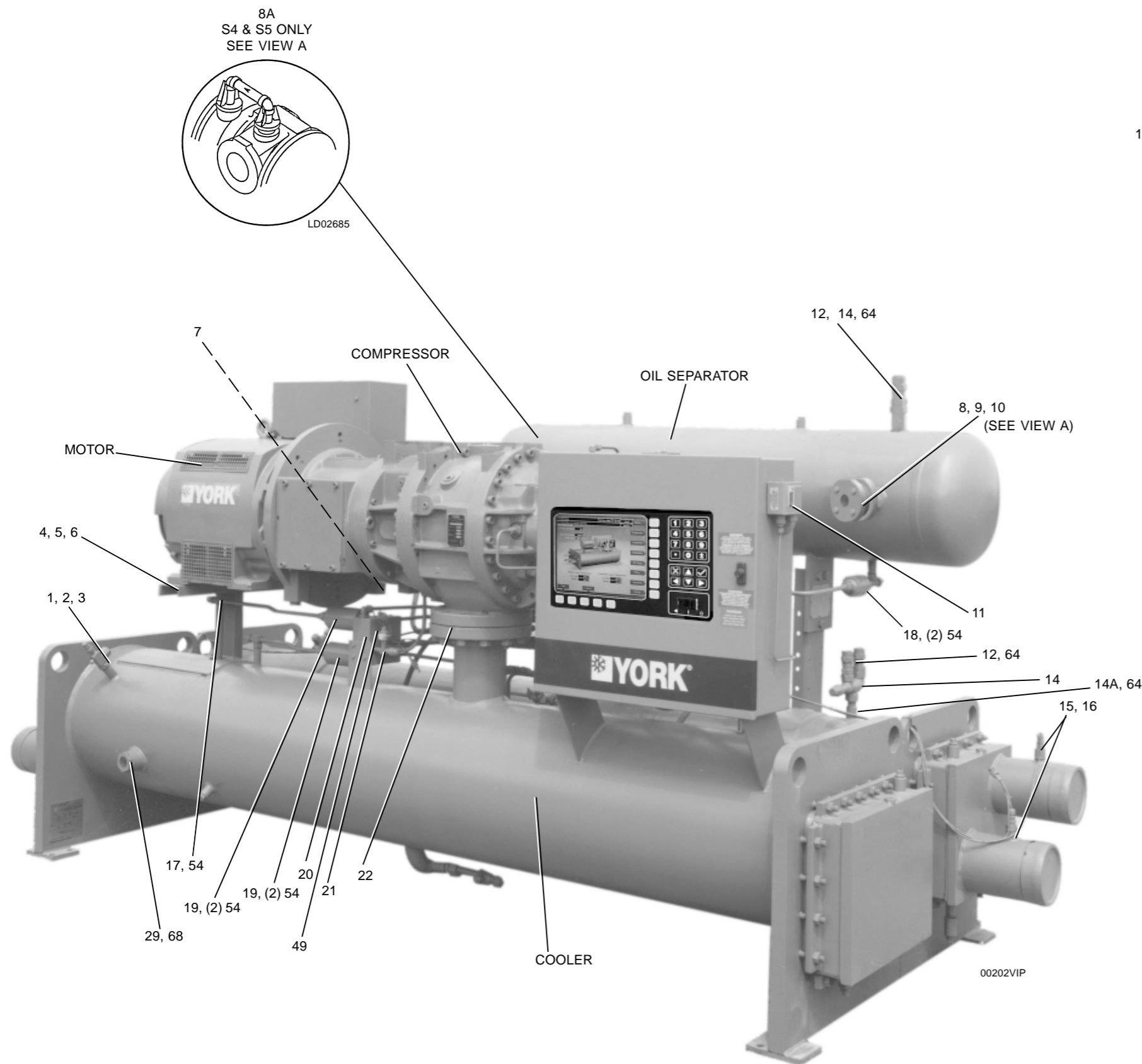
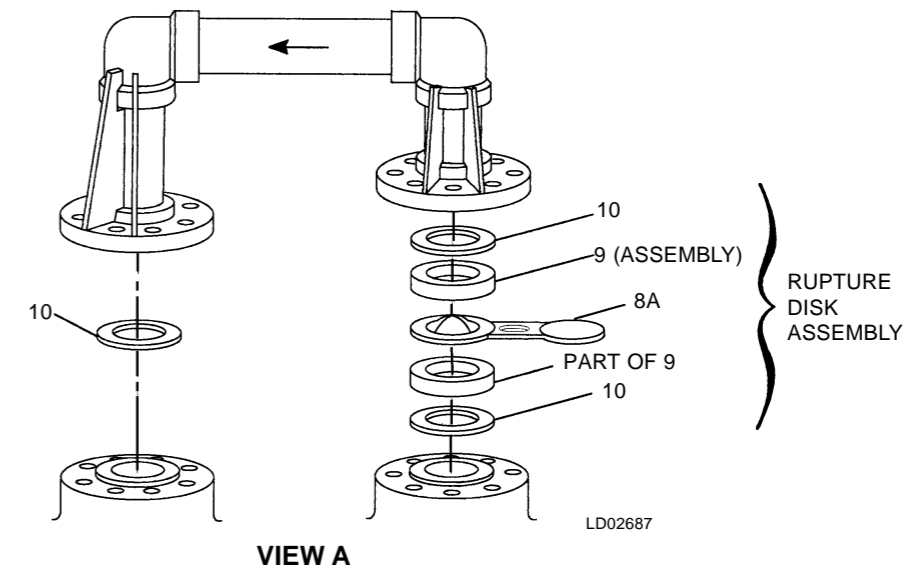
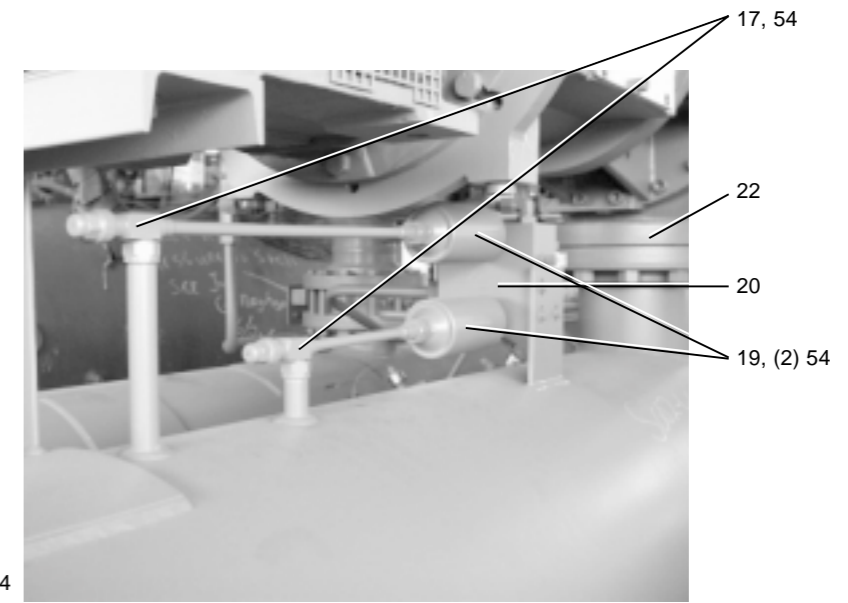


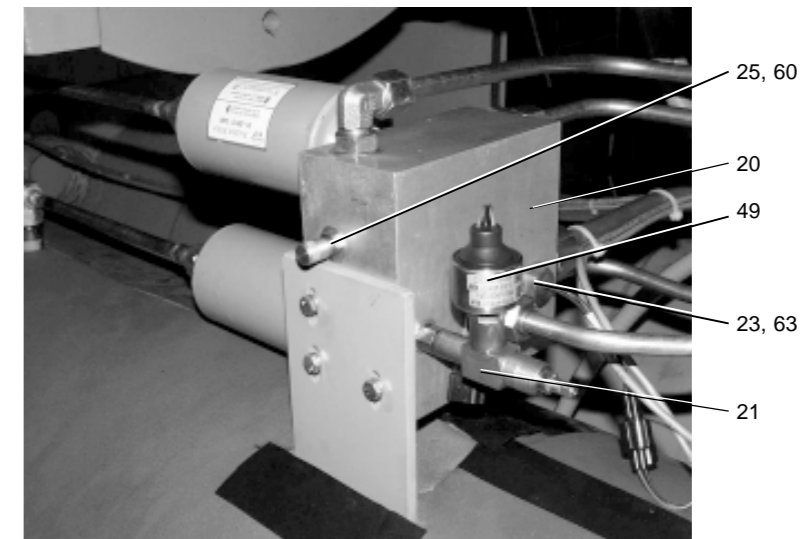
FIG. 1 - UNIT FRONT VIEW



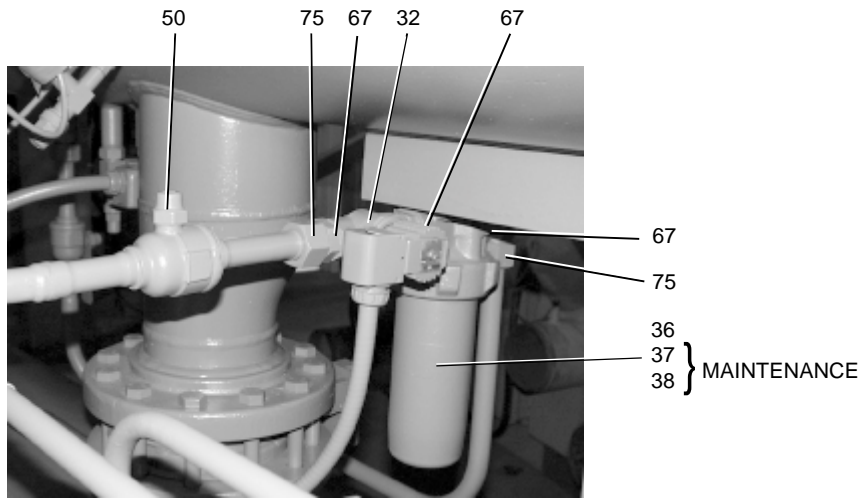
VIEW A



VIEW B

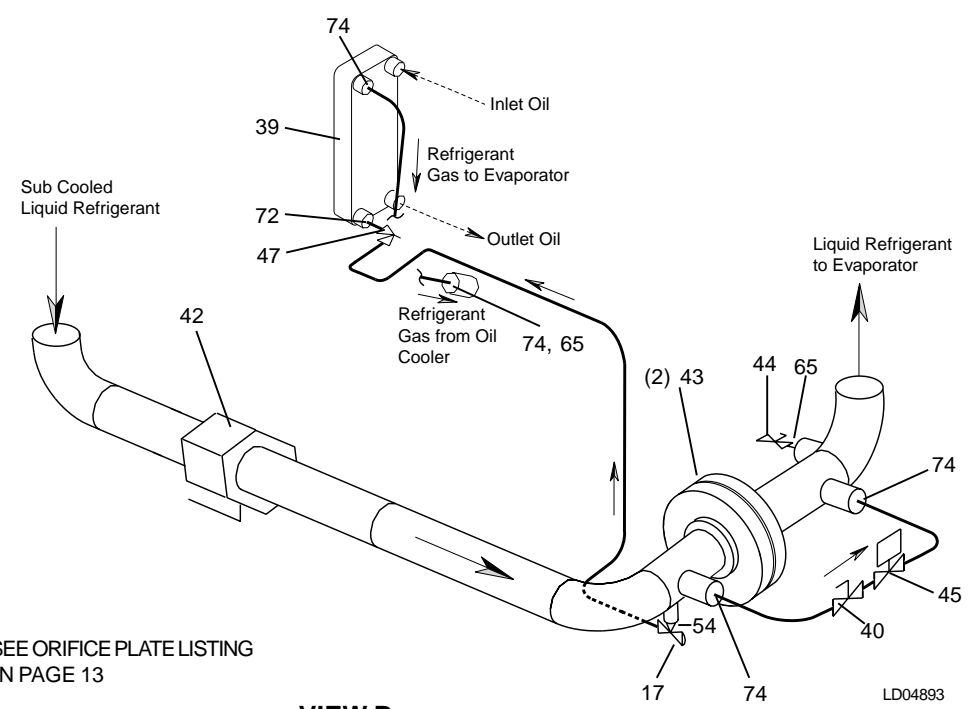


VIEW C



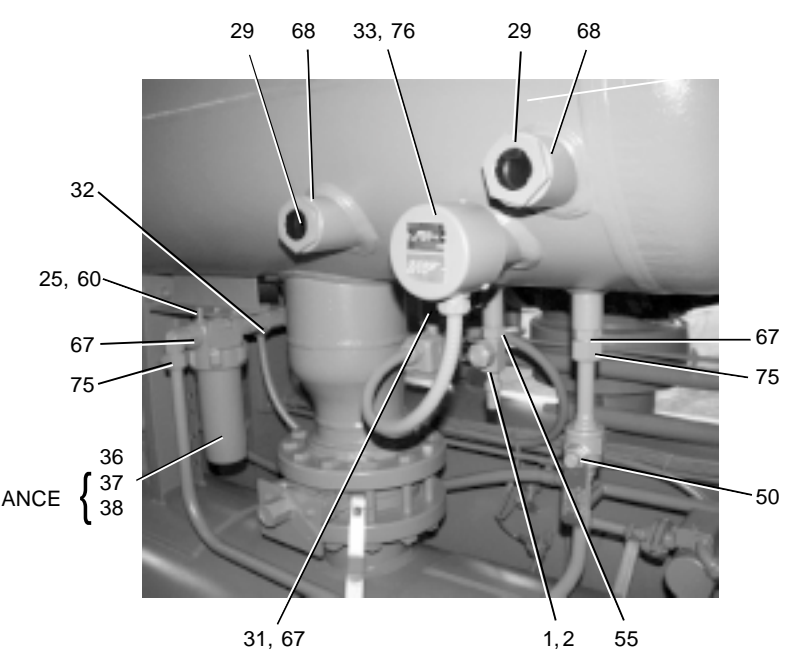
VIEW A

00210VIP



VIEW B

LD04893



00209VIP

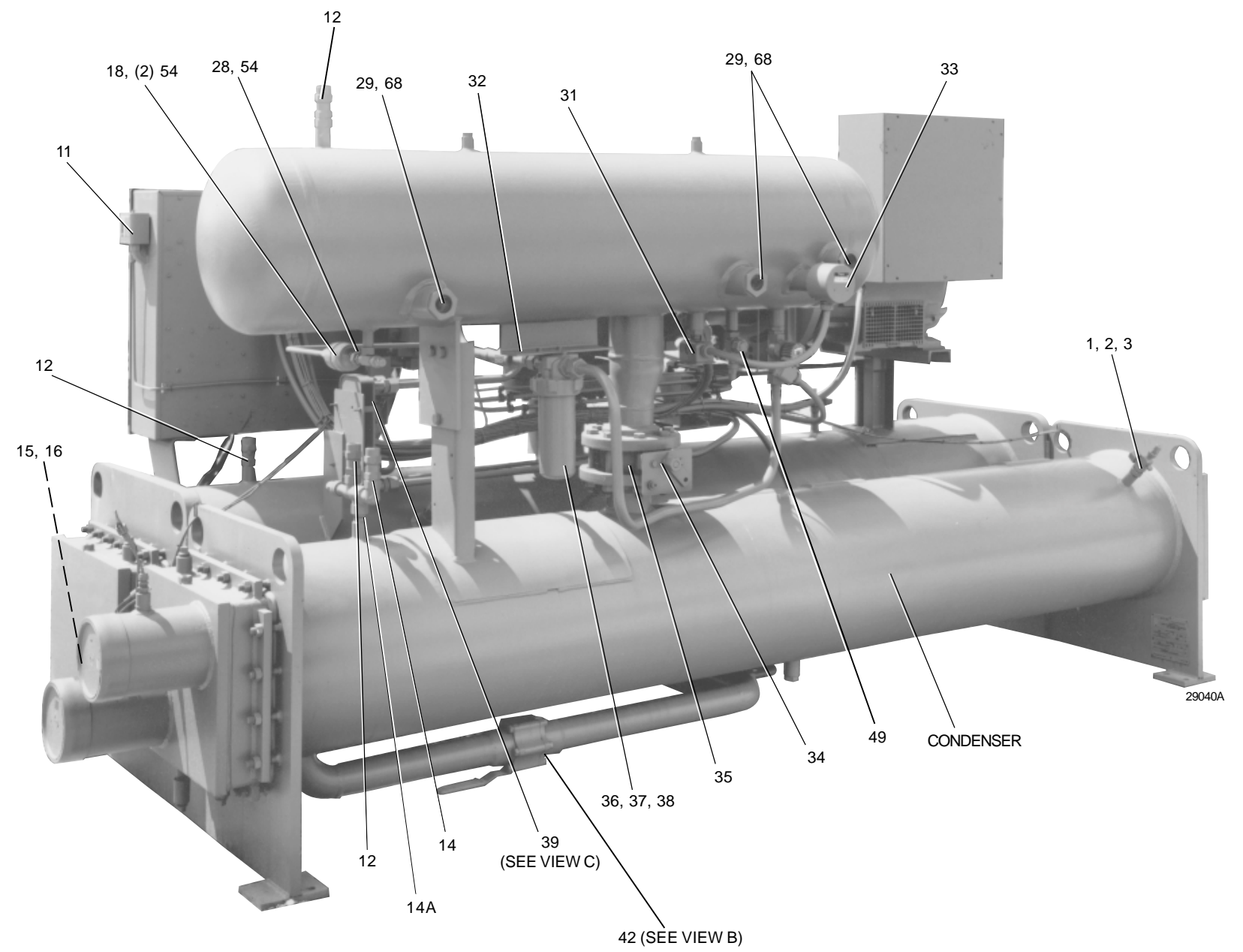


FIG. 2 - UNIT REAR VIEW

UNIT COMPONENTS

ITEM NUMBER	DESCRIPTION	PART NUMBER	QUANTITY PER UNIT	REFERENCE FIGURE
32	Valve, Oil Line Solenoid S0, S1, S2, and S3 Chillers S4 and S5 Chillers	025-33702-000 Not Required	1 —	2, 2A, 4
33	Oil Heater, 500 watt	025-33703-000	1	2
34	Valve Butterfly, Oil Separator/Condenser S0, S1 Chillers, 4 inch S2, S3 Chillers, 6 inch S4, S5 Chillers, 8 inch	022-08874-000 022-08875-000 022-08876-000	1	2
35	Gasket Butterfly Valve S0, S1 Chillers 7-1/8" OD, 4-1/2" ID S2, S3 Chillers 9-7/8" OD, 6-5/8" ID S4, S5 Chillers 12-1/8" OD, 8-5/8" ID	028-13573-000 028-13574-000 028-13575-000	2	2
36	Oil Filter, Complete Includes Items 37 and 38	026-35621-000	1, (2) with optional dual oil filter	2, 2A, 5
37	Element Oil Filter, 3 Micron	026-32831-000	1, (2) with optional dual oil filter	2, 2A, 5
38	O-ring Oil Filter Element Replacement	026-32000-000	1, (2) with optional dual oil filter	2, 2A, 5
39	Oil Cooler S0, S1, S2, and S3 Chillers S4 and S5 Chillers	026-36536-000 026-36552-000	2, 2C 1 1	
40	Valve, Ball - Variable Orifice Line	022-09580-000	1	
41	Manifold, Oil Distribution Block Compressor Port SB2	029-22732-000	1	5
42	Valve, Liquid Line Ball Valve 2-1/2"	022-08744-000	1	2, 2B, 5
43	Gasket, Round Orifice Plate, 5-1/8" OD, 2-7/8" ID	028-13572-000	2	5
44	Valve, Ball Liquid Charging 3/4" Male Flare	022-09757-000	1	2B
45	Valve, Solenoid Variable Orifice	025-33738-000	1	5
46	Valve, 4-way Solenoid, Capacity Control (Continental)	025-30464-000	1	7
46A	Manifold, 4-way Solenoid Sub-plate	029-22798-000	1	6, 7
47	Valve, Angle Stop, Compressor Port SC11 and Oil Cooler	022-09199-000	2	2B, 4
48	Gasket, Compressor Discharge S0, S1 Compressor - 7-1/8" OD, 4-1/2" ID S2, S3 Compressor - 9-7/8" OD, 6-5/8" ID S4, S5 Compressor - 12-1/8" OD, 8-5/8" ID	028-13573-000 028-13574-000 028-13575-000	1	3
49	Transducer, High Pressure - Condensing Pressure Filter Pressure, Oil Pressure, Seal Oil Pressure 0-300 psig, with Item #61 O-ring	025-28678-006	4	
50	Valve, Ball Oil Filter Isolation	022-09797-000	2	
51	Transducer, Evaporator Pressure R-22 Water, 50-125 psig, with Item #61 O-ring R-22 Brine, 25-100 psig, with Item #61 O-ring R-134a, Water or Brine, 6-74 psig, with item #61 O-ring	025-28678-113 025-28678-114 025-28678-112	1 per chiller	
52	Suppressor, Inductive Load S0, S1, S2, and S3 Chillers S4 and S5 Chillers	031-00808-000	4 3	
53	Valve, 3-Way 1", Optional Dual Oil Filters-All Sizes	022-10031-000	1	
54	Seal, Teflon Fiber, 3/4" OD, 5/8" ID	028-12709-000	11	
55	Seal, Teflon Fiber, 1" OD, 7/8" ID	028-04836-000	3	
60	Seal, O-ring SAE Straight Thread, 7/16-20 UNF-2A	028-12961-001	12	
61	Seal, O-ring SAE Straight Thread, 1/2-20 UNF-2A	028-12961-002	5	
62	Seal, O-ring SAE Straight Thread, 9/16—18 UNF-2A	028-12961-003	7	
63	Seal, O-ring SAE Straight Thread, 3/4-16 UNF-2A	028-12961-004	12	

* Special Primore Rotalock Fitting - Requires (2) teflon seal washers P/N 028-12709-000

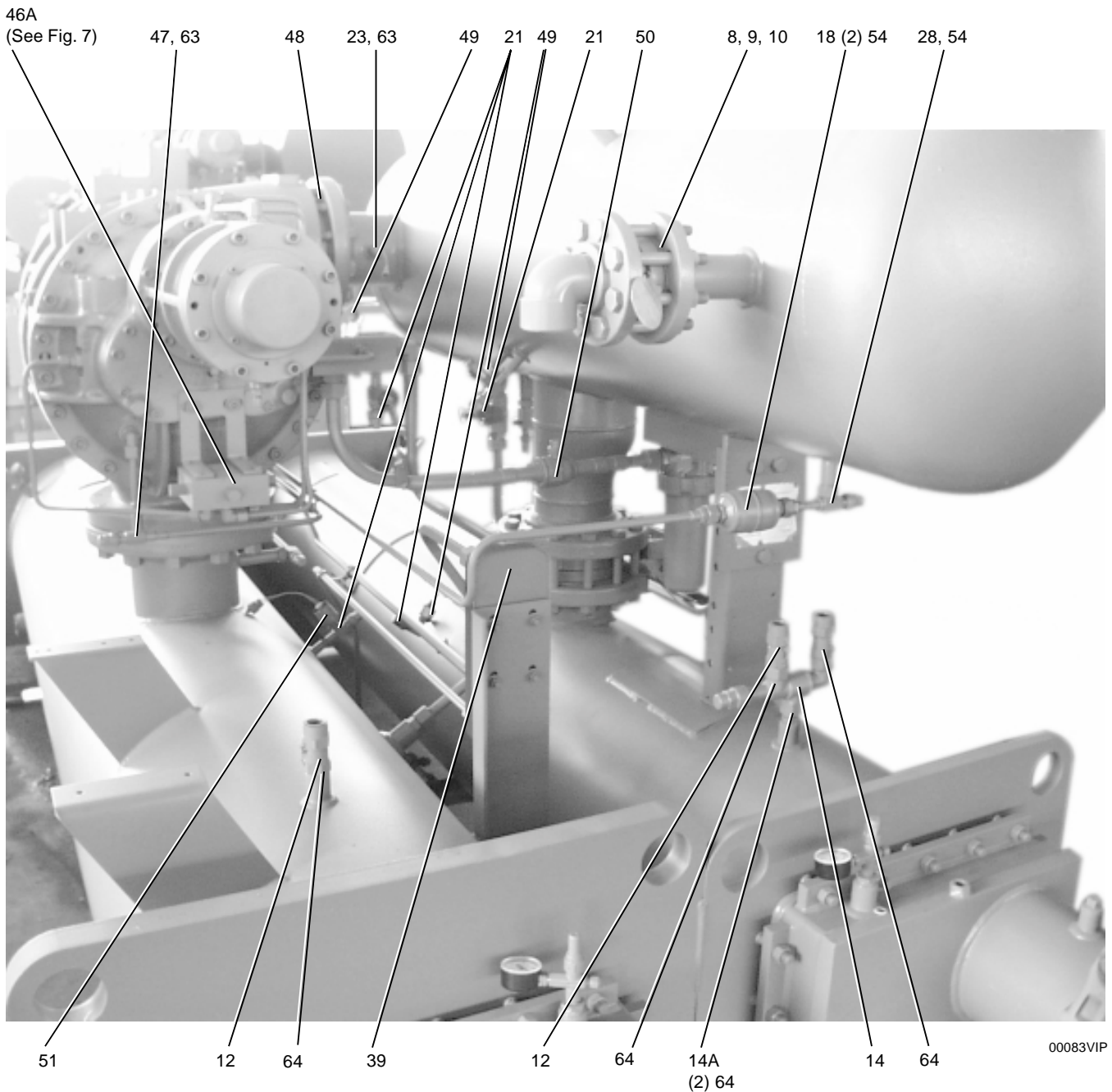


FIG. 3 – UNIT END VIEW

UNIT COMPONENTS

ITEM NUMBER	DESCRIPTION	PART NUMBER	QUANTITY PER UNIT	REFERENCE FIGURE
64	Seal, O-ring SAE Straight Thread, 7/8-14 UNF-2A	028-12961-005	9	
65	Seal, O-ring SAE Straight Thread, 1-1/16-12UN-2A	028-12961-006	4	
66	Seal, O-ring SAE Straight Thread, 1-3/16-12UN-2A	028-12961-007	1	
67	Seal, O-ring SAE Straight Thread, 1-5/16-12UN-2A	028-12961-008	12	
68	Seal, O-ring SAE Straight Thread, 2-1/4-12UN-2A	028-12961-009	4	
70	Seal, O-ring SAE Face Seal, 1/4 Tube	028-12961-011	1	
71	Seal, O-ring SAE Face Seal, 3/8 Tube	028-12961-012	8	
72	Seal, O-ring SAE Face Seal, 1/2 Tube	028-12961-013	7	
74	Seal, O-ring SAE Face Seal, 3/4 Tube	028-12961-015	8	
75	Seal, O-ring SAE Face Seal, 1 Tube	028-12961-016	8	
76	Seal, O-ring SAE Face Seal, 1-5/8-12UNEF-2A	028-12961-017	1	

* Item 49 and 51 are furnished with O-Ring, p/n 028-129610-002.

1. Used in Oil Line Solenoid Valve (1 SOL), Refrigerant Level Solenoid Valve (2 SOL) and Slide Valve Solenoid (2 Req'd).
2. Used in Refrigerant Level Solenoid Valve (2 SOL) and Slide Valve Solenoid (2 Req'd).

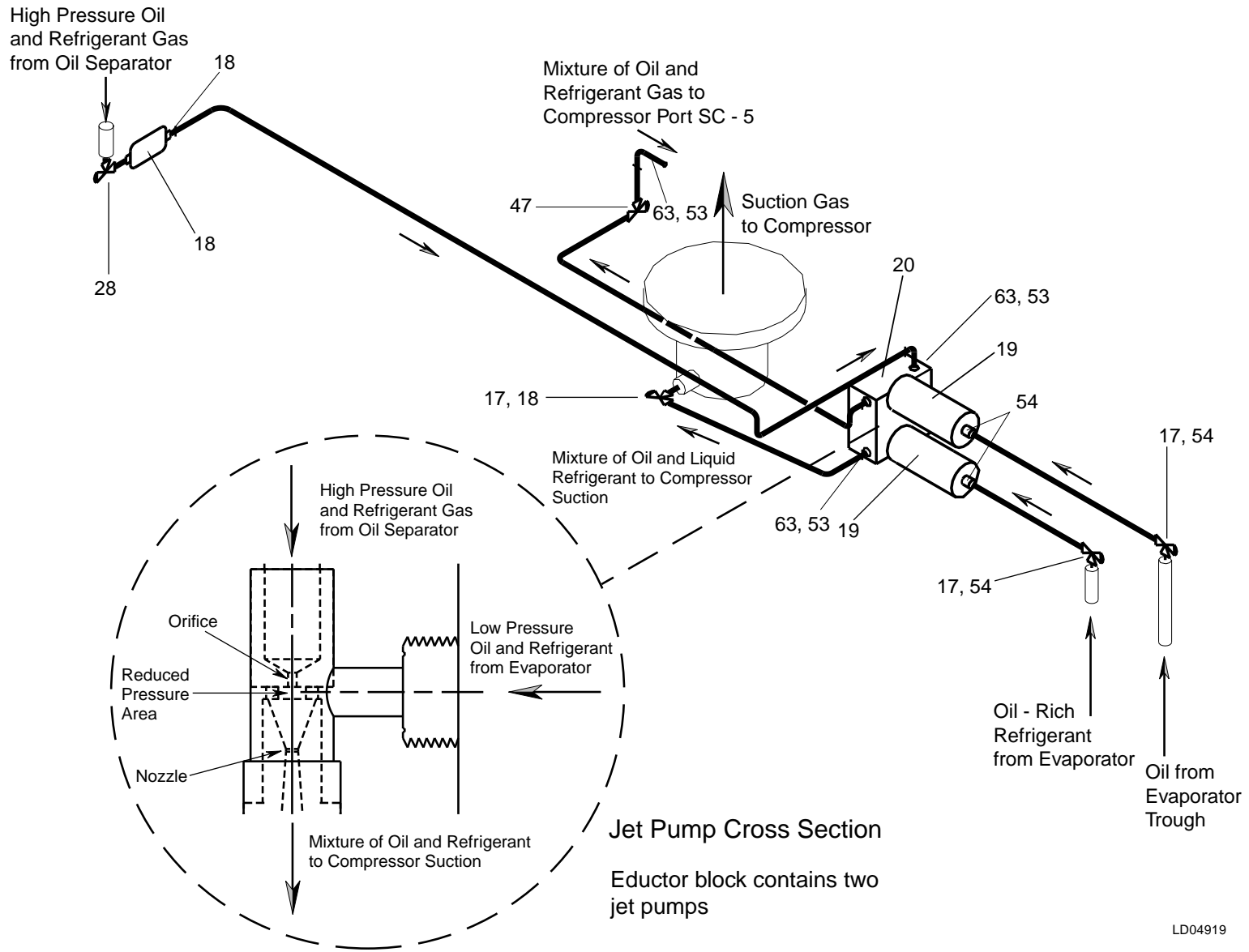
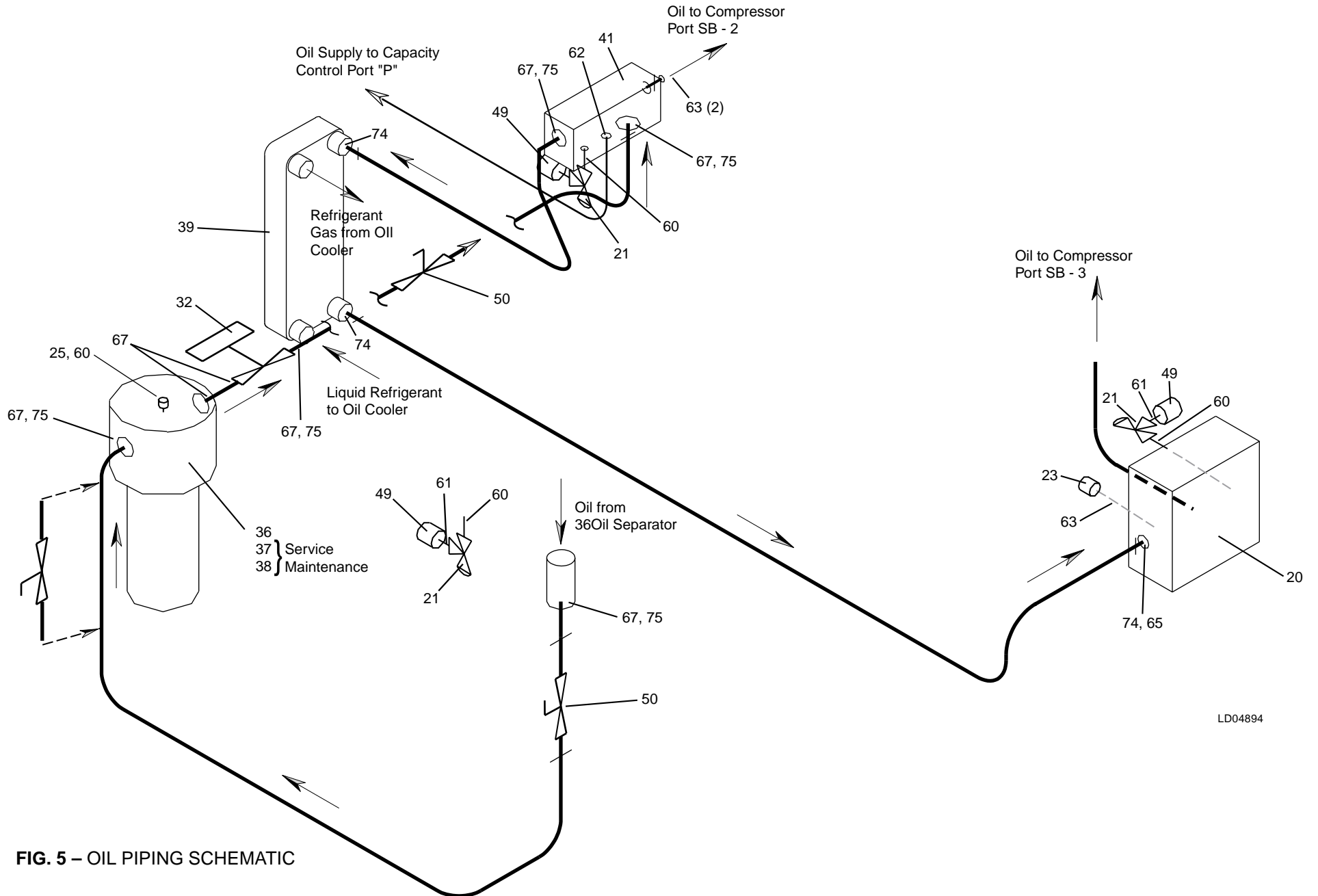


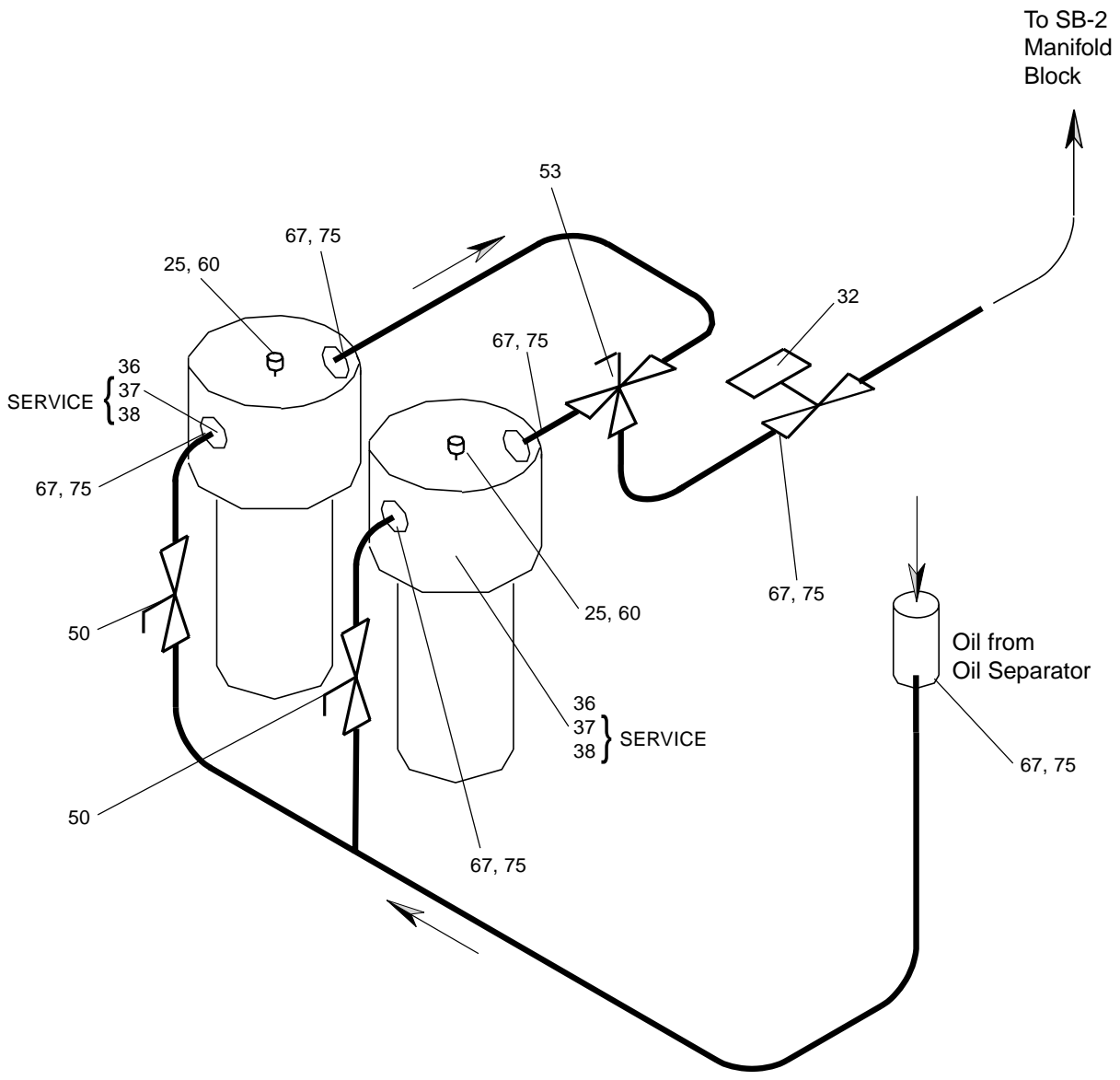
FIG. 4 – OIL EDUCTOR SCHEMATIC

LD04919



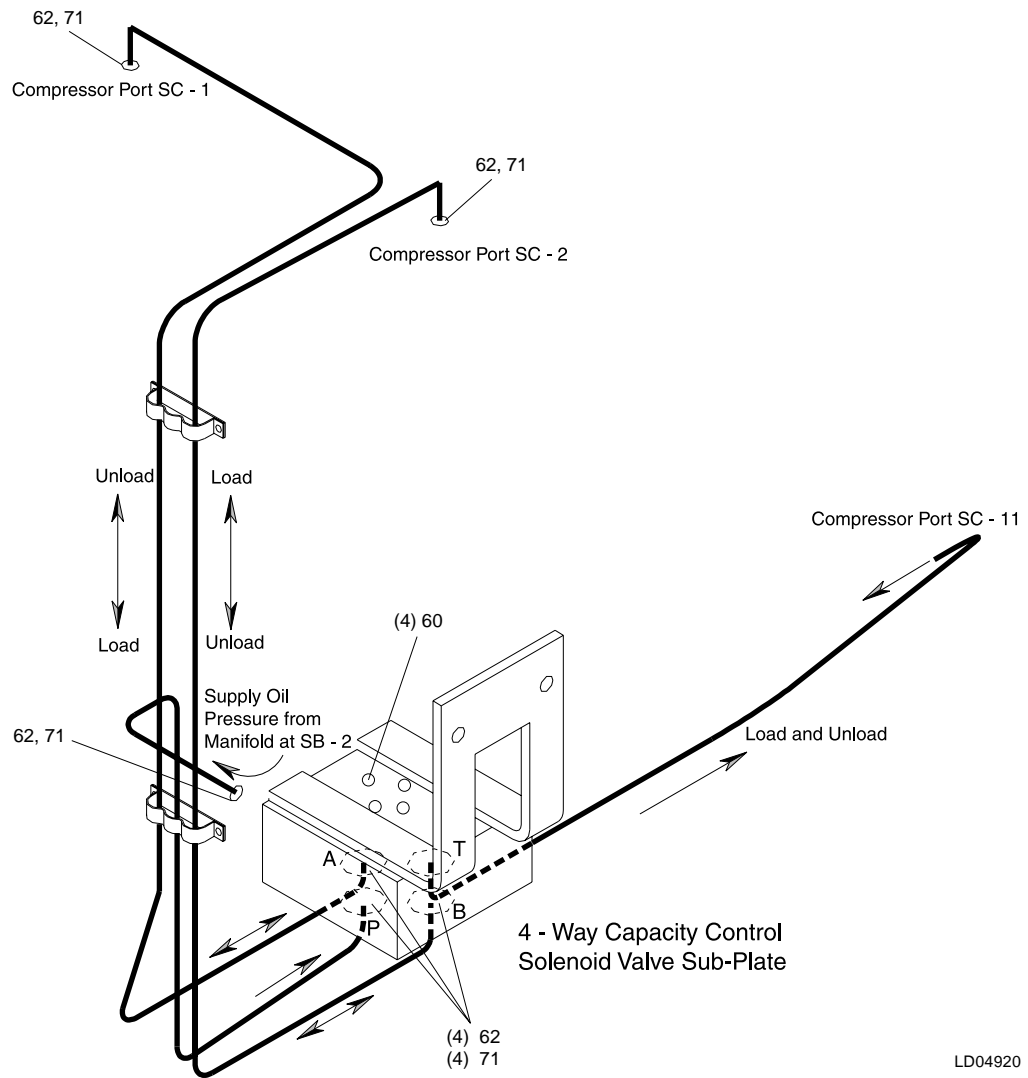
LD04894

FIG. 5 - OIL PIPING SCHEMATIC



LD04895

FIG. 6 – OPTIONAL DUAL OIL FILTER PIPING SCHEMATIC



LD04920

FIG. 7 – CAPACITY CONTROL PIPING SCHEMATIC



00208VIP

FIG. 8 – 4-WAY SOLENOID VALVE AND SUBPLATE

CURRENT TRANSFORMER KITS

FIELD INSTALLED ELECTRO-MECHANICAL STARTERS ONLY

MOTOR VOLTAGE	FLA	"CT" RATIO	PART NUMBER
			USE WITH FACTORY-MOUNTED MOTORS ONLY
200/600	65-111	200:1	366-82718-701
	112-224	350:1	366-82718-702
	225-829	700:1	366-82718-703
	830-1790	1400:1	366-82718-704
2300/4160	11-18	200:1	366-82718-705
	19-37	200:1	366-82718-705
	38-123	200:1	366-82718-705
	124-264	350:1	366-82718-706

TRANSFORMER ONLY

CT RATIO	PART NUMBER
200:1	025-21173-001
350:1	025-21173-002
700:1	025-21173-003
1400:1	025-21173-004

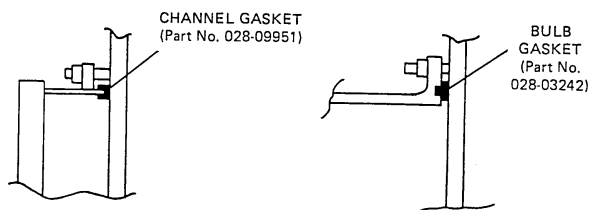
OIL SEPARATOR

COMPRESSOR SIZE	PART NUMBER
S0	375-22455-000
S1	375-22455-000
S2	375-22456-000
S3	375-22456-000
S4	375-22457-000
S5	375-22457-000

ORIFICE PLATE

CODE	PART NUMBER	CODE	PART NUMBER
C	075-00748-001	N	075-00748-011
D	075-00748-002	P	075-00748-012
E	075-00748-003	Q	075-00748-013
F	075-00748-004	R	075-00748-014
G	075-00748-005	S	075-00748-015
H	075-00748-006	T	075-00748-016
J	075-00748-007	U	075-00748-017
K	075-00748-008	V	075-00748-018
L	075-00748-009	W	075-00748-019
M	075-00748-010		

WATER BOX GASKETS



LD02690

COOLER WITH STANDARD COMPACT WATER BOXES 150 PSI

SHELL CODE	1 PASS		2 PASS		3 PASS	
	GASKET PART NO.	FEET REQ'D	GASKET PART NO.	FEET REQ'D	GASKET PART NO.	FEET REQ'D
BA,BB	028-09951	12.0	028-09951	14.0	028-09951	14.0
CA,CB	028-09951	12.0	028-09951	14.0	028-09951	15.0
DA,DB,DC	028-09951	17.0	028-09951	20.0	028-09951	22.0
EA,EB,EC	028-09951	18.0	028-09951	21.0	028-09951	23.0
FA,FB,FC	028-03242	21.0	028-03242	21.0	028-03242	21.0
			028-09951	4.0	028-09951	3.5

COOLER WITH MARINE WATER BOXES 150 PSI

SHELL CODE	1 PASS		2 PASS		3 PASS	
	GASKET PART NO.	FEET REQ'D	GASKET PART NO.	FEET REQ'D	GASKET PART NO.	FEET REQ'D
BA,BB	028-03242	13.0	028-03242	13.0	028-03242	13.0
			028-09951	4.0	028-09951	3.0
CA,CB	028-03242	14.0	028-03242	14.0	028-03242	14.0
			028-09951	5.0	028-09951	4.0
DA,DB,DC	028-03242	18.0	028-03242	18.0	028-03242	18.0
			028-09951	6.0	028-09951	5.0
EA,EB,EC	028-03242	36.0	028-03242	24.0	028-03242	36.0
			028-09951	6.0	028-09951	10.0
FA,FB,FC	028-03242	44.0	028-03242	33.0	028-03242	44.0
			028-09951	13.0	028-09951	13.0

COOLER WITH MARINE WATER BOXES 300 PSI

SHELL CODE	1 PASS		2 PASS		3 PASS	
	GASKET PART NO.	FEET REQ'D	GASKET PART NO.	FEET REQ'D	GASKET PART NO.	FEET REQ'D
BA,BB	028-03242	13.0	028-03242	13.0	028-03242	13.0
			028-09951	4.5	028-09951	4.5
CA,CB	028-03242	13.0	028-03242	13.0	028-03242	13.0
			028-09951	5.0	028-09951	4.0
DA,DB,DC	028-03242	16.5	028-03242	16.5	028-03242	16.5
			028-09951	6.0	028-09951	5.5
EA,EB,EC	028-03242	18.0	028-03242	18.0	028-03242	18.0
			028-09951	6.5	028-09951	6.0
FA,FB,FC	028-03242	21.0	028-03242	21.0	028-03242	21.0
			028-09951	7.5	028-09951	7.0

WATER BOX GASKETS

CONDENSER WITH STANDARD COMPACT WATER BOXES 150 PSI

SHELL CODE	1 PASS		2 PASS	
	GASKET PART NO.	FT. REQ'D	GASKET PART NO.	FT. REQ'D
BA,BB	028-09951	11.0	028-09951	12.0
CA,CB	028-09951	12.0	028-09951	14.0
DA,DB	028-09951	16.0	028-09951	18.0
EA,EB	028-09951	16.0	028-09951	18.0
FA,FB	028-03242	20.0	028-03242 028-09951	20.0 3.0

CONDENSER WITH MARINE WATER BOXES 150 PSI

SHELL CODE	1 PASS		2 PASS	
	GASKET PART NO.	FT. REQ'D	GASKET PART NO.	FT. REQ'D
BA,BB	028-03242	11.0	028-03242 028-09951	11.0 3.0
CA,CB	028-03242	14.0	028-03242 028-09951	14.0 3.0
DA,DB	028-03242	17.0	028-03242 028-09951	17.0 4.0
EA,EB	028-03242	17.0	028-03242 028-09951	17.0 4.0
FA,FB	028-03242	21.0	028-03242 028-09951	21.0 6.0

CONDENSER WITH MARINE WATER BOXES 300 PSI

SHELL CODE	1 PASS		2 PASS	
	GASKET PART NO.	FT. REQ'D	GASKET PART NO.	FT. REQ'D
BA,BB	028-03242	10.5	028-03242 028-09951	10.5 3.5
CA,CB	028-03242	11.5	028-03242 028-09951	11.5 4.0
DA,DB	028-03242	14.0	028-03242 028-09951	14.0 4.5
EA,EB	028-03242	14.0	028-03242 028-09951	14.0 4.5
FA,FB	028-03242	18.0	028-03242 028-09951	18.0 6.0

TUBES

COOLER TUBES

SHELL CODE	SHELL ID	TUBE QUANTITY
PART NUMBER 007-07872-000		
BA	19	100
BB	19	134
CA	23	174
CB	23	228
DA	29	216
DB	29	307
DC	29	410
PART NUMBER 007-07879-000		
EA	31	217
EB	31	308
EC	31	410
FA	38	410
FB	38	547
FC	38	728

CONDENSER TUBES

SHELL CODE	SHELL ID	TUBE QUANTITY
PART NUMBER 007-08409-000		
BA	17-1/4	133
BB	17-1/4	169
CA	20-1/2	226
CB	20-1/2	292
DA	25	404
DB	25	528
PART NUMBER 007-08408-000		
EA	25	408
EB	25	532
FA	32-1/2	670
FB	32-1/2	902

NEOPRENE VIBRATION ISOLATORS

SYSTEM OPERATING WEIGHT		PART NUMBER Includes Quantity of 4 Pads	PAD SIZE
KILOGRAMS	POUNDS		
Up to 7423	Up to 16365	028-10578-000	4-1/2" x 4-1/2"
7424 to 13079	16366 to 28835	028-10518-000	4-1/2" x 6"
13080 to 24281	28836 to 53530	028-10519-000	6" x 6"

SPRING ISOLATORS (4 Per Unit) – ENGLISH

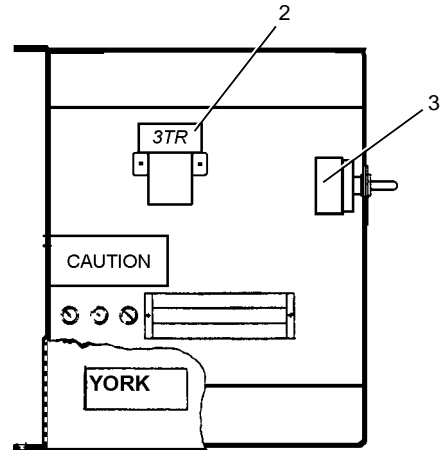
COMPRESSOR SIZE	SYSTEM OPERATING WEIGHT (Lbs.)	PART NO.
S0, S1, S2, S3	UP to 6,865	029-18479-001
	6,866 to 9,818	029-18479-002
	9,819 to 12,182	029-18479-003
	12,183 to 15,272	029-18479-004
	15,273 to 18,272	029-18480-001
	18,273 to 22,909	029-18480-002
S4, S5	UP to 22,909	029-18480-002
	22,910 to 26,044	029-18480-003
	26,045 to 32,101	029-18480-004

SPRING ISOLATORS (4 Per Unit) – SI

COMPRESSOR SIZE	SYSTEM OPERATING WEIGHT (mm)	PART NO.
S0, S1, S2, S3	UP to 3,114	029-18479-001
	3,115 to 4,453	029-18479-002
	4,454 to 5,525	029-18479-003
	5,526 to 6,927	029-18479-004
	6,928 to 8,288	029-18480-001
	8,289 to 10,392	029-18480-002
S4, S5	UP to 10,392	029-18480-002
	10,392 to 11,813	029-18480-003
	11,814 to 14,561	029-18480-004

MULTIPLE UNIT SEQUENCE KIT CONTROLS STYLES C & D UNITS

TWO UNITS

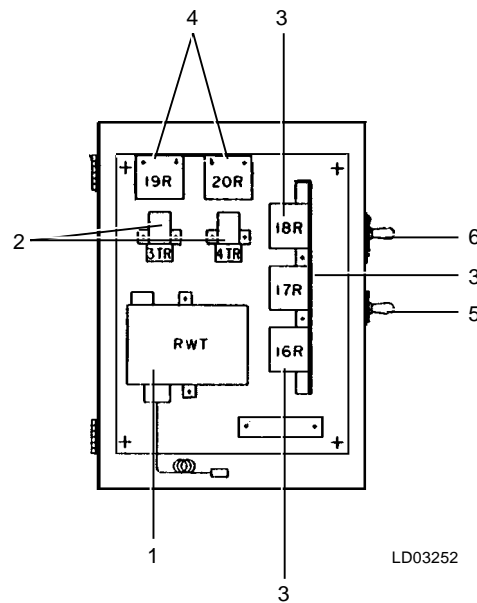


LD03251

ITEM	DESCRIPTION	QUANTITY	PART NUMBER
1 ¹	Controller, RWT	1	025-15154-000
2	Relay, Time Delay	1	024-13711-000
3	Switch, Toggle	1	024-14057-000

¹ Not Shown. Remote Mounted.

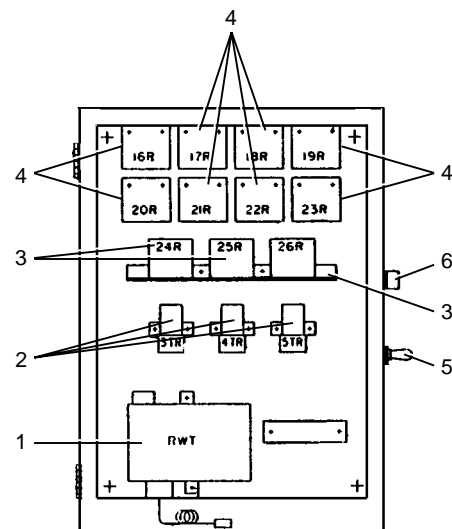
THREE UNITS



LD03252

ITEM	DESCRIPTION	QUANTITY	PART NUMBER
1	Controller, RWT	1	025-10215-000
2	Relay, Time Delay	2	024-13711-000
3	Relay, Control	3	024-27246-000
4	Relay, Control	2	024-14519-000
5	Switch, Toggle	1	024-11736-000
6	Switch, Toggle	1	024-17026-000

FOUR UNITS



LD03253

ITEM	DESCRIPTION	QUANTITY	PART NUMBER
1	Controller, RWT	1	025-10214-000
2	Relay, Time Delay	3	024-13711-000
3	Relay, Control	3	024-27246-000
4	Relay, Control	8	024-14519-000
5	Switch, Toggle	1	024-11736-000
6	Switch, Rotary	1	024-20494-000

MISCELLANEOUS AND ACCESSORIES

COMPOUND

DESCRIPTION	PART NUMBER	QUANTITY
Compound, Heat Conductive (For Thermometer Wells)	013-00898-000	4 Oz. Can

TOUCH-UP PAINTS – SPRAY CANS

DESCRIPTION	PART NUMBER
Caribbean Blue Enamel	013-01835-000
Black (Control Center)	Purchase Locally

TEMPERATURE RECORDER

DESCRIPTION		PART NUMBER
HZ	NUMBER OF PENS	
60	1	025-09658-000
	2	025-09823-000
50	1	025-12650-000
	2	025-12330-000

FLOW SWITCH CONTROL

DESCRIPTION	PART NUMBER
150 DWP	024-26116-000
300 DWP	024-12144-000

DIFFERENTIAL PRESSURE CONTROL

DESCRIPTION	PART NUMBER
Control, Differential Pressure*	025-30919-000

*300 Psi Maximum Working Pressure

YS OIL USAGE TABLE

CHILLER SIZE	OIL QUAN. (GALS.)	R-22 REFRIGERANT		R-134a REFRIGERANT	
		OIL TYPE	PART NUMBER	OIL TYPE	PART NUMBER
S0	10	YORK C OIL	011-00312-000	YORK H OIL	011-00589-000
S1	10	YORK C OIL	011-00312-000	YORK H OIL	011-00589-000
S2	10	YORK C OIL	011-00312-000	YORK H OIL	011-00589-000
S3	10	YORK S OIL	011-00922-000	YORK H OIL	011-00589-000
S4	15	YORK S OIL	011-00922-000	YORK H OIL	011-00589-000
S5	15	YORK S OIL	011-00922-000	YORK H OIL	011-00589-000
S7	100	YORK C OIL	011-00312-000		

The part numbers listed are 5 gallon containers.

