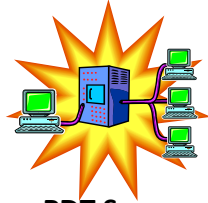


# Download (Before you collect data)



PDT Server



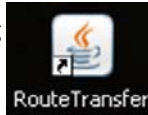
Your Computer



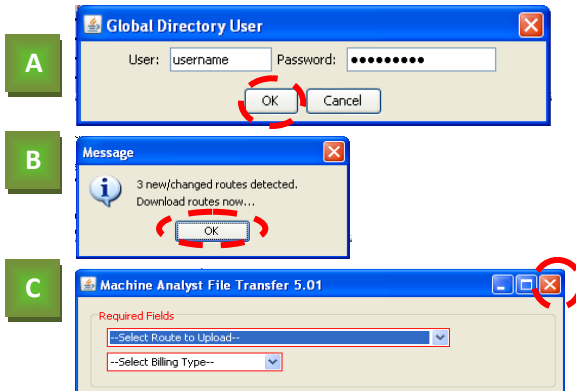
Microlog

1

Sign in to **Route Transfer** to update existing routes and download new routes on your computer.



- A. Log in with your global ID
  - a. If you get "Error in LDAPCheck()" make sure your logged into the VPN
- B. If new routes are available select ok.
- C. Close Route Transfer

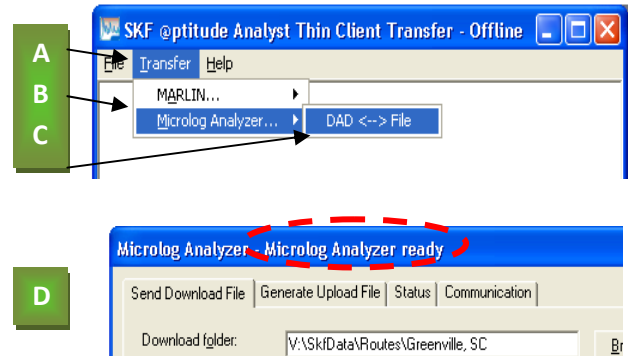


2

Open up **SKF @ptitude Analyst Thin Client Transfer (TCT)**.



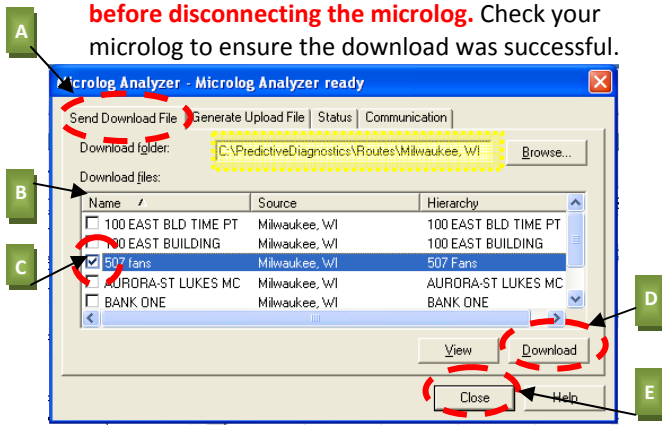
- B. Select Transfer
- C. Select Microlog Analyzer
- D. Select DAD <--> File
- A. Check to make sure it says "*Microlog Analyzer Ready*" at the top of the window. If it doesn't, go to **T**, to troubleshoot.



3

Download the routes you need onto the microlog.

- A. Select the "Send Download File" tab.
- B. The list of your routes should appear.
  - a. **If not**, "Browse" to you C:\Predictive Diagnostics\Routes\Branch Folder
- C. Select the checkbox next to the routes you want to collect
- D. Select the Download Button
- E. **Once the download is complete, EXIT the program before disconnecting the microlog.** Check your microlog to ensure the download was successful.

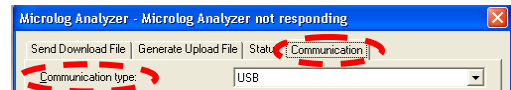


T

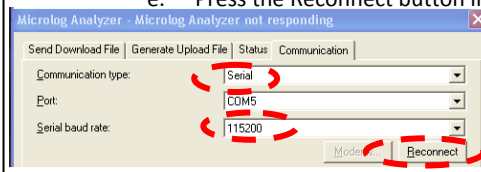
## Quick Troubleshooting

If you don't see "Microlog Analyzer ready."

- A. For newer micrologs like the GX and AX
  - a. Make sure it is turned on and the USB cable is plugged into your computer.
  - b. Make sure your communication type is set to USB in Thin Client Transfer.



- B. For older micrologs like the CMVA 10 - 65
  - a. Set the Communication Type to Serial in TCT
  - b. Match the Baud Rates on the Communication tab with the Baud Rate set on you microlog in "Utilities," "Communications"
  - c. Turn the microlog off then back on
  - d. Put the microlog in **Transfer** mode
  - e. Press the Reconnect button in TCT



For additional support call the Predictive Team @ 141-524-5000 Options 6,1,1,5

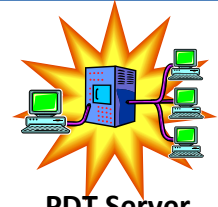
# Upload (After you collect data)



Microlog



Your Computer



PDT Server

1

Open up **SKF @ptitude Analyst Thin Client Transfer (TCT)**.

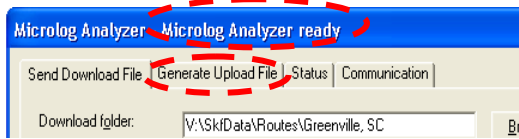
- Select Transfer.
- Select Microlog Analyzer.
- Select DAD <--> File.
- Check to make sure it says "Microlog Analyzer Ready" at the top of the window. If it doesn't, go to **T** on the "Download" guide to troubleshoot.
- Select the "Generate Upload File" tab.



A  
B  
C



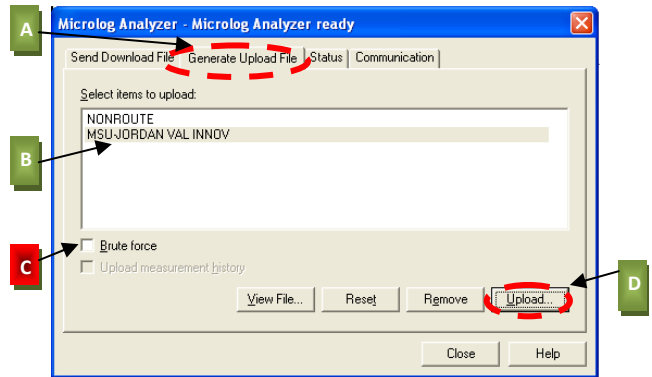
D  
E



2

Upload the collected routes onto your computer.

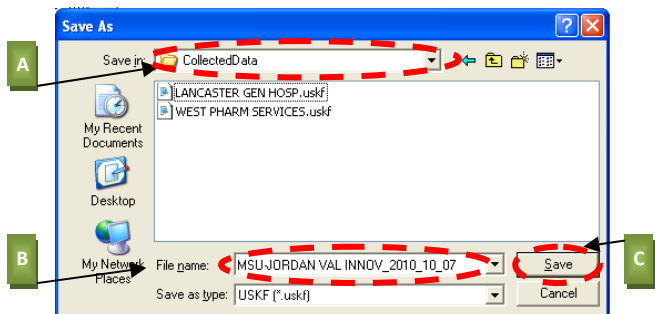
- The box on the "Generate Upload File" tab, should display the list of the routes on your microlog.
- Select the route you want to upload. You can only upload one route at a time. NonRoute will always be there.
- DO NOT** check the Brute force checkbox.
- With the route selected, click the "Upload" button.



3

At the *Save As* window:

- Check that you are saving to the "Collected Data" folder. If not click the drop down arrow and browse to C:/PredictiveDiagnostics/Collected Data.
- The file name will automatically be filled in as the name of the route you are uploading.
- Select Save.



4

Sign into Route Transfer. (Step **1** on the **Download** guide)

- Select the route you want to transfer from the first dropdown box.
- Select the "Billing Type" (most likely Activity #). A box will appear to enter the number. You can't upload without it.
- Add additional information if applicable.
- Select Upload – A message with "Collected data upload complete" will pop up when it is done.

