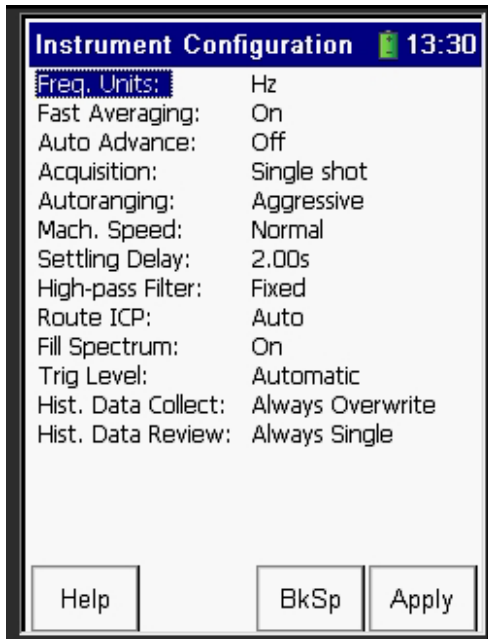


Microlog Setup CMXA 70, 75



- Set up the Microlog for data collection
- Make sure the Date and Time are set correctly



Route Configuration –

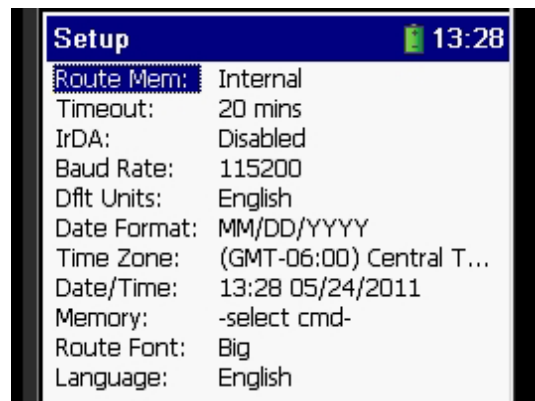
Go to “Route” then select “Config” using the left white function button under the screen.

- Freq. Units: How do you want to view the data? Hz, or CPM
- All other setting should be set like the image to the left.

System Setup –

From the main menu, go to “Setup”

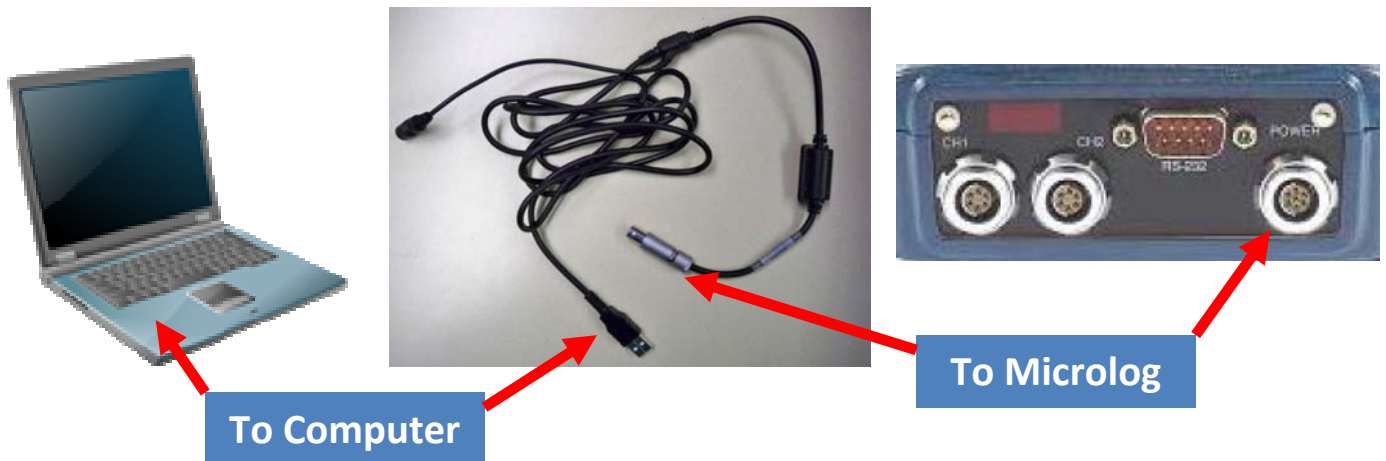
- Double check that the Date and Time are correct.



Connecting to Your Computer CMXA 70, 75



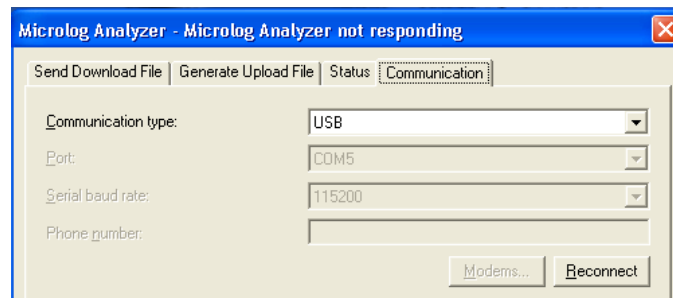
Connecting a CMXA series Microlog to your computer to upload and download routes.



- Connect the cables as shown. *Make sure to plug the data cable into the **POWER** input on the Microlog. Trying to plug it into an accelerometer input will damage the cable.*
- As soon as the Microlog is plugged in, Microsoft Active Sync will automatically connect to it, and the icon in your system tray will turn green.



- SKF Thin Client Transfer must have the Communication Type set to “USB”



Questions? Call 414-524-5000 Options 6,1,1,5