

TYPE	OUTPUT		POLE	TIME RATING	VOLTAGE V	Hz	SYN. SPEED R. P. M.
	HP.	kW.					
ANZA-S2	4000		4	CONT	4000	60	1800

WEATHER PROTECTED TYPE II, SQUIRREL-CAGE ROTOR

- NOTE:
- DIMENSIONS IN MM(INCHES).
 - FRAME NO. 5014D.
 - F CLASS INSULATION.
 - FOR DIRECT FLEXIBLE COUPLING.
 - SLEEVE TYPE BEARING, AXIAL THRUST LOAD NOT ALLOWED.
 - THE MOTOR ENDPLAY IS ± 7 MM. A LIMITED END FLOAT TYPE COUPLING IS REQUIRED TO LIMIT ENDPLAY TO ± 2.4 MM.
 - BEARING SIZE: DRIVE END: 11-110(INSULATED)
NON-DRIVE END: 11-110(INSULATED)
 - BOTH BEARING LINERS(SHELL) ARE INSULATED FROM THE HOUSING. ANY METAL CONNECTIONS MADE TO THE BEARING SHELL MUST BE INSULATED TO PREVENT AN INSULATION SHORT CIRCUIT. METAL CONNECTIONS MADE TO THE HOUSING DO NOT NEED TO BE INSULATED.
A GROUND STRAP IS PROVIDED AT THE DRIVE END.
BEARING INSULATION SHOULD BE CHECKED WITH AN OHMMETER OR MEGGER BEFORE OPERATING MOTOR.
DRIVE END BEARING MUST BE GROUNDED BY MEANS OF THE GROUND STRAP WHILE THE MOTOR IS OPERATING.
 - BEARING LUBRICATION: SELF-LUBRICATION.
A. OIL VISCOSITY: ISO VG32(140~160SSU AT 100°F).
B. OIL CAPACITY: 4.2L FOR EACH BEARING.
 - WITH SPACE HEATER: RATED: 1 ϕ , 240V, 2000W.
OPERATION: 1 ϕ , 120V, 500W.
 - WITH WINDING R. T. D.: PT 100 Ω /0°C, 6PCS.
 - WITH BEARING R. T. D.: PT 100 Ω /0°C, DUAL ELEMENT, 2PCS.
SETTING: ALARM 95°C, TRIP 100°C.

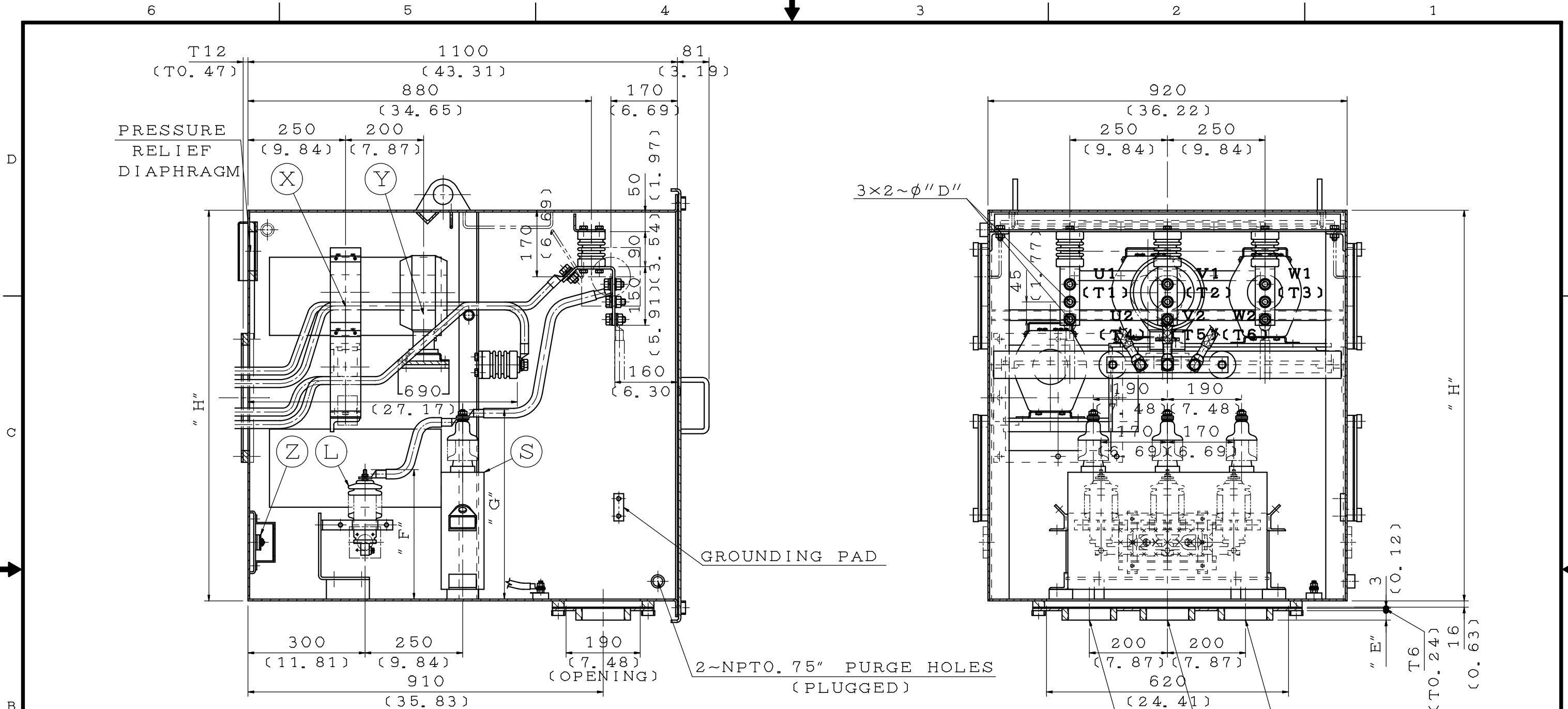
- WITH CONSTANT LEVEL OILER: TRICO, 8 OZ, 2PCS.
- WITH DIFFERENTIAL PRESSURE SWITCH: DWYER 1950-0, 1PCS.
- WITH REMOVABLE & WASHABLE STAINLESS AIR FILTER, 2PCS.
- WITH DIFFERENTIAL CURRENT TRANSFORMER(RATIO 50:5), 1.0VA/10P10, 3PCS; METERING CURRENT TRANSFORMER (RATIO 600:5), 40VA/1.0CL, 1PCS; SURGE CAPACITORS (4kV, 0.5 μ F), 1PCS; LIGHTNING ARRESTER(1 ϕ , 4.5kV), 3PCS AND SPACE HEATER: OPERATION 1 ϕ 120V 62.5W/RATED 1 ϕ 240V 250W, IN THE PRIMARY T-BOX.
- WITH BENTLY NEVEDA 3300 VIBRATION INSTRUMENT:
 - PROXIMITY PROBE HOUSING: CA21000-28-05-00-035-00-02, 4PCS. 2PCS PER BEARING.
 - EXTENSION CABLE: 330130-045-00-05, 4PCS.
 - VIBRATION TRANSMITTERS: 330180-50-05, 4PCS. OUTPUT: 7.87V/mm(200mV/mil) $\pm 5\%$
 - TRANSMITTER HOUSING: CA72342-10-03, 1PCS.
- WITH STAINLESS SHIMS (ONE PER FOOT TOTAL 7.0mm): 1.5mm(3PCS), 0.8mm(1PCS), 0.5mm(2PCS), 0.2mm(2PCS), 0.1mm(2PCS), 0.05mm(2PCS). TO BE SHIPPED LOOSE WITH MOTOR.
- WITH DRAIN & BREATHER: ECD15, 4PCS. TO BE SHIPPED LOOSE WITH MOTOR.
- VIBRATION: NO LOAD
BELOW 38.1 μ m(1.5mils) (P-P) ON SHAFT.
BELOW 2.54mm/sec(0.1"/sec) (O-P) ON BEARING HOUSING.
- NOISE: BELOW 85dBA AT 3 FEET DISTANCE NO LOAD.
- SUITABLE FOR CLASS I, DIVISION 2, GROUP C & D. TEMPERATURE CODE: T3.(MAX. EXTERNAL SURFACE TEMP.: 200°C)
- OUTDOOR SERVICE.
- MOTOR APPROX. WEIGHT: 7700KGS(16940LBS).
ROTOR APPROX. WEIGHT: 2150KGS(4730LBS).
PRIMARY T-BOX APPROX. WEIGHT: 420KGS(924LBS).

- TECO IS NOT RESPONSIBLE FOR FOUNDATION DESIGN. THE SUPPORT REACTIONS NECESSARY FOR FOUNDATION DESIGN ARE AS FOLLOWS -KGS PER BOLT AT CENTERLINE OF HOLD DOWN BOLT HOLES:
STATIC X = MOTOR WEIGHT/4
RATED MOTOR TORQUE X = MOTOR WEIGHT/4 \pm 807 KGS.
MAXIMUM MOTOR TORQUE X = MOTOR WEIGHT/4 \pm 6620 KGS.

- M20 VERTICAL JACKING HOLE, ONE HOLE PER FOOT. WITH 4~M20 JACKING BOLTS ATTACHED.
- TWO 2~0.500"-13UNC TAPPED GROUNDING PADS ON FRAME, DIAGONALLY OPPOSITE.
- REMOVABLE COVER FOR CABLE ENTRY TO BE DRILLED BY THE CUSTOMER.
- PRIMARY T-BOX IS NOT SELF-SUPPORTING. CUSTOMER MUST PROVIDE SUPPORT TO THE DIMENSION SHOWN. PRIMARY T-BOX TO BE SHIPPED LOOSE WITH MOTOR.
- TWO LIFTING LUGS ON SILENCER FOR LIFTING SILENCER ONLY. DO NOT USE FOR LIFTING ENTIRE MOTOR.
- GROUND STRAP (3 PLACES).

DATE			OUTLINE DIMENSIONS	
DWN.	C. LEONG	DEC.12.2008	3-PHASE INDUCTION MOTOR	
CHKD.	C. SHIH	JAN.14.2009	DWG NO.	REV: 03
APPD.	C. WANG	JAN.15.2009	3A040K902	

第三角法



ITEM	A	B	C	D	E	F	G	H
01	0	0	0	11 (0.43)	0	331.5 (13.05)	485 (19.09)	1000 (39.37)
02	0	0	0	13 (0.51)	0	331.5 (13.05)	485 (19.09)	1000 (39.37)
03	0	0	0	17 (0.67)	0	331.5 (13.05)	485 (19.09)	1000 (39.37)
04								
05								
06								

- (L) LIGHTNING ARRESTER
- (S) SURGE CAPACITOR
- (X) DIFFERENTIAL CURRENT TRANSFORMER
- (Y) METERING CURRENT TRANSFORMER
- (Z) HEATER

NOTE:
 1. DIMENSIONS IN MM(INCHES).
 2. PRIMARY T-BOX
 3. ORDER NO. FD094211T1
 FD103212T1.

FOR APPROVAL

Please confirm or comment, and return within 7 business days. Otherwise, these drawings will be deemed as certified and approved.

Approved by:
Order No.

DWN.	C. LEONG	APR.14.2009
CHKD.	S. WANG	APR.14.2009
APPD.	C. WANG	APR.14.2009

DATE	DEC.22.2009	SCHEMATIC DRAWING
		TERMINAL BOX
TECO Westinghouse		DWG NO. REV:01 3B040W031

6

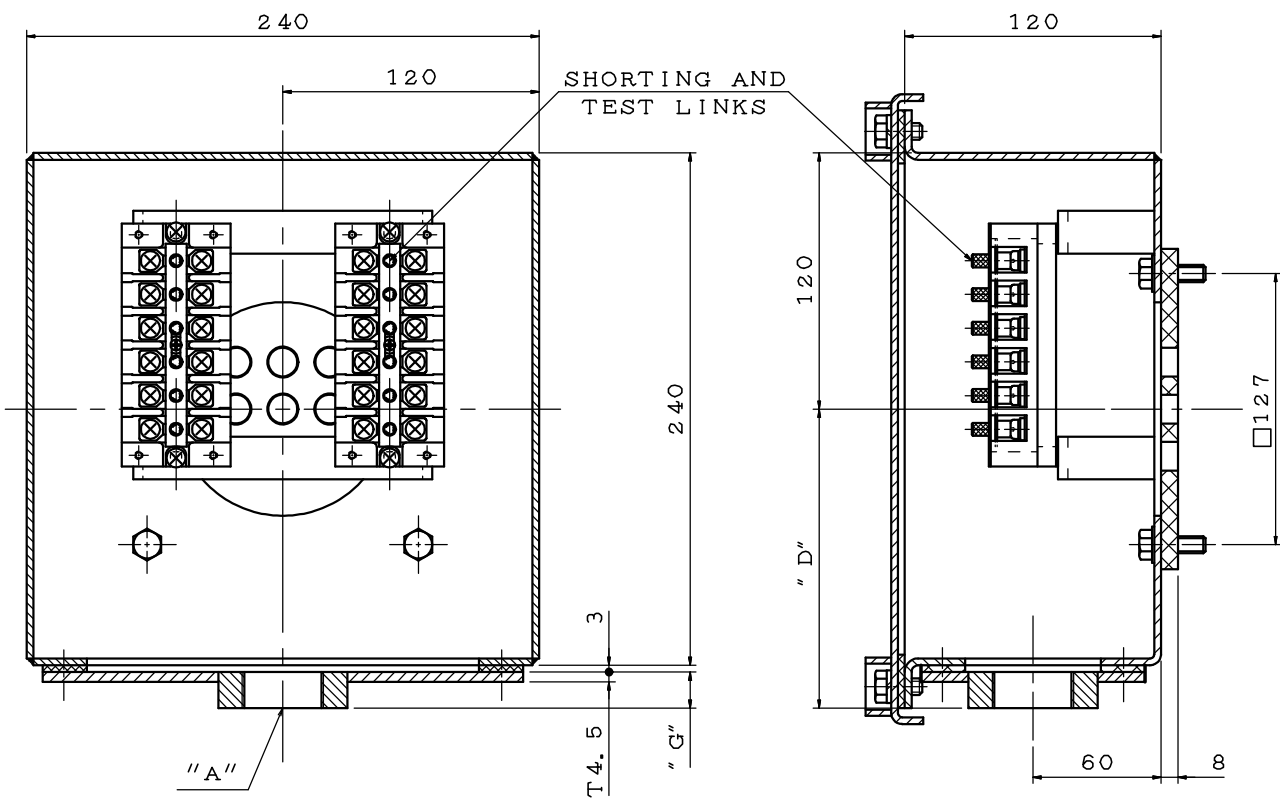
5

4

3

2

1



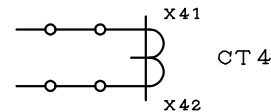
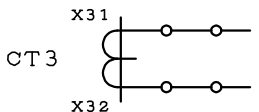
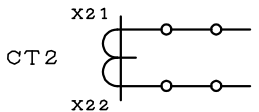
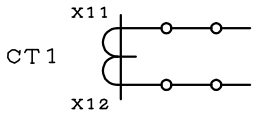
ITEM	A	D	G
01	0	127.5 (5.02)	4.5 (0.18)
02	NPT1"	143 (5.63)	20 (0.79)
03	NPT1.5"	143 (5.63)	20 (0.79)
04	NPT2"	143 (5.63)	20 (0.79)
05			
06			
07			
08			
09			
10			

FOR APPROVAL

Please confirm or comment, and return within 7 business days. Otherwise, these drawings will be deemed as certified and approved.

Approved by :
Order No.

DIFFERENTIAL CURRENT TRANSFORMER
METERING CURRENT TRANSFORMER



NOTE :

1. DIMENSION IN MM.
2. CURRENT TRANSFORMER T-BOX.
3. ORDER NO. FD094211T1
FD103212T1.

DATE	DEC.22.2009	SCHEMATIC DRAWING	
		TERMINAL BOX	
DWN.	E. SU	MAY.17.2006	
CHKD.	C. SHIH	JUN.07.2006	
APPD.	C. WANG	JUN.08.2006	
TECO® Westinghouse		DWG NO.	REV:01
		3B040M363	

6

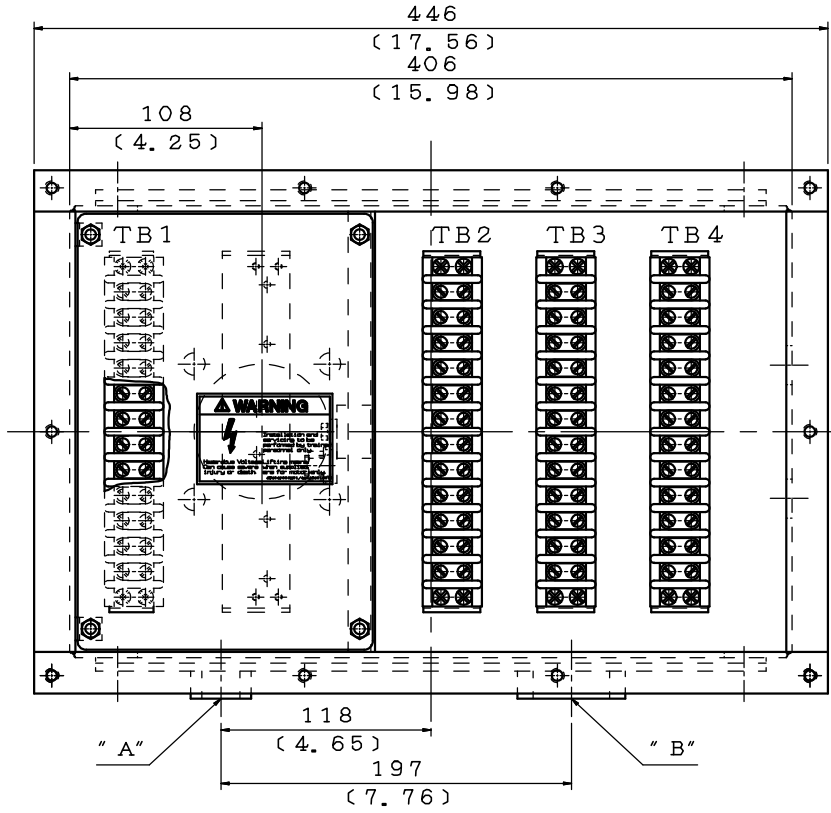
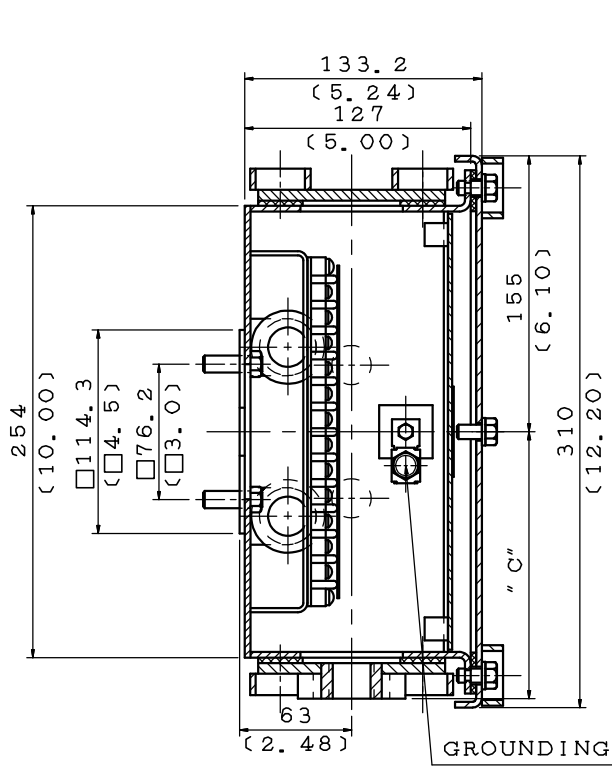
5

4

3

2

1



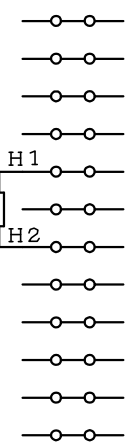
ITEM	A	B	C
01	0	0	136 (5.35)
02	NPT0.75"	NPT1.5"	150 (5.91)
03			
04			
05			
06			

FOR APPROVAL

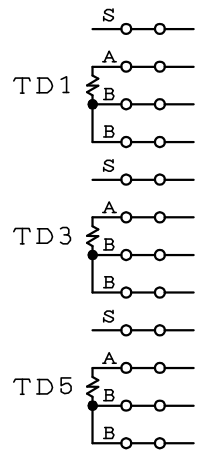
Please confirm or comment, and return within 7 business days. Otherwise, these drawings will be deemed as certified and approved.

Approved by :
Order No.

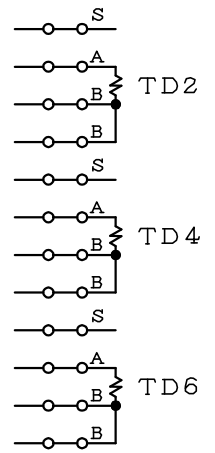
SPACE HEATER (TB1)



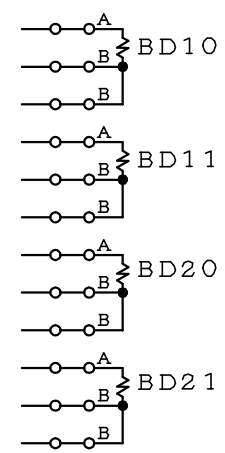
WINDING R. T. D. (TB2)



WINDING R. T. D. (TB3)



BEARING R. T. D. (TB4)



NOTE :

1. DIMENSIONS IN MM(INCHES).
2. WINDING R. T. D., BEARING R. T. D. & SPACE HEATER T-BOX.
3. H1 & H2 FOR SPACE HEATER
BD10 & BD11 FOR DRIVE END BEARING
BD20 & BD21 FOR NON-DRIVE END BEARING
TD1 & TD2 FOR U PHASE
TD3 & TD4 FOR V PHASE
TD5 & TD6 FOR W PHASE
4. ORDER NO. FD094211T1
FD103212T1.

DATE DEC.22.2009

SCHMATIC DRAWING

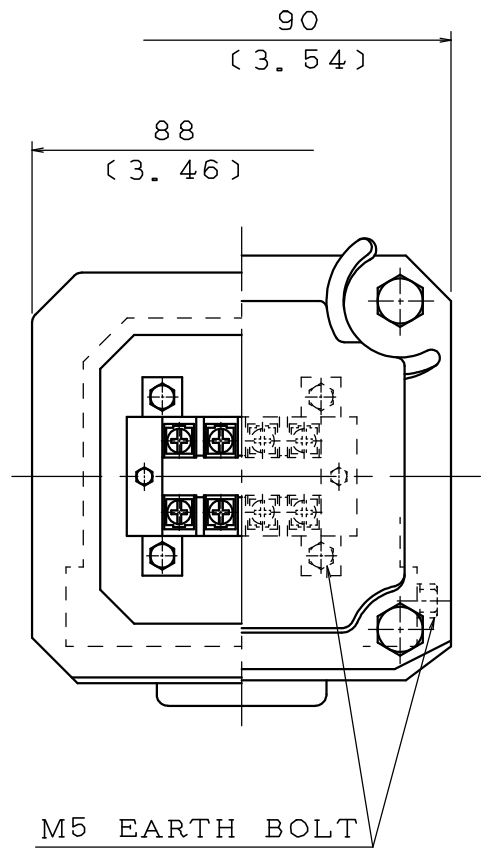
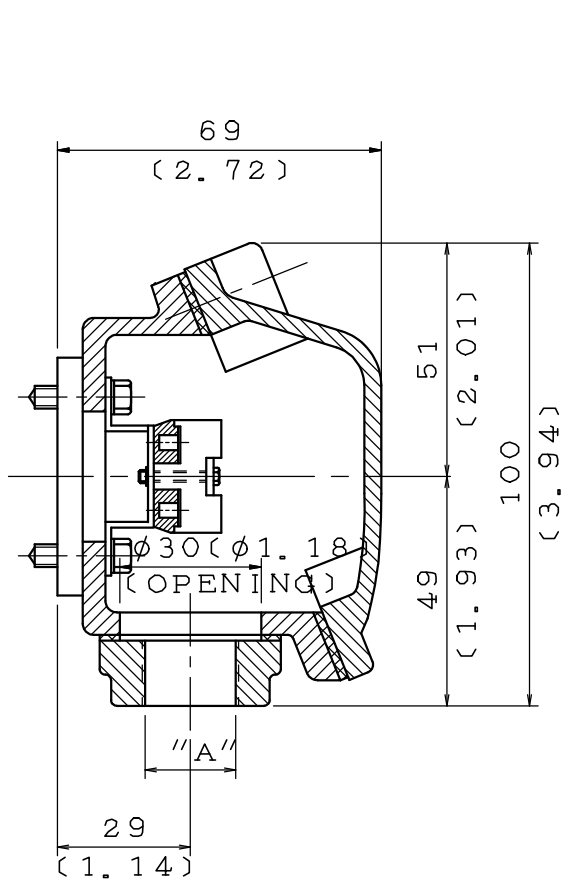
TERMINAL BOX

DWN.	C. LEONG	DEC.12.2008
CHKD.	C. SHIH	JAN.14.2009
APPD.	C. WANG	JAN.15.2009

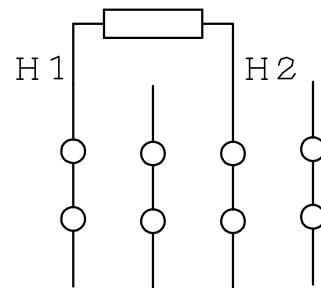
TECO Westinghouse

DWG NO. 3B040Z685
REV:00

DATE DEC.21.2009	SCHMATIC DRAWING	MODEL
	TERMINAL BOX	



ITEM	A
01	M20×1.5
02	M25×1.5
03	PF-0.5"
04	PF-0.75"
05	PT-0.5"
06	PT-0.75"
07	NPT-0.5"
08	NPT-0.75"
09	NPT-1"
10	0



FOR APPROVAL

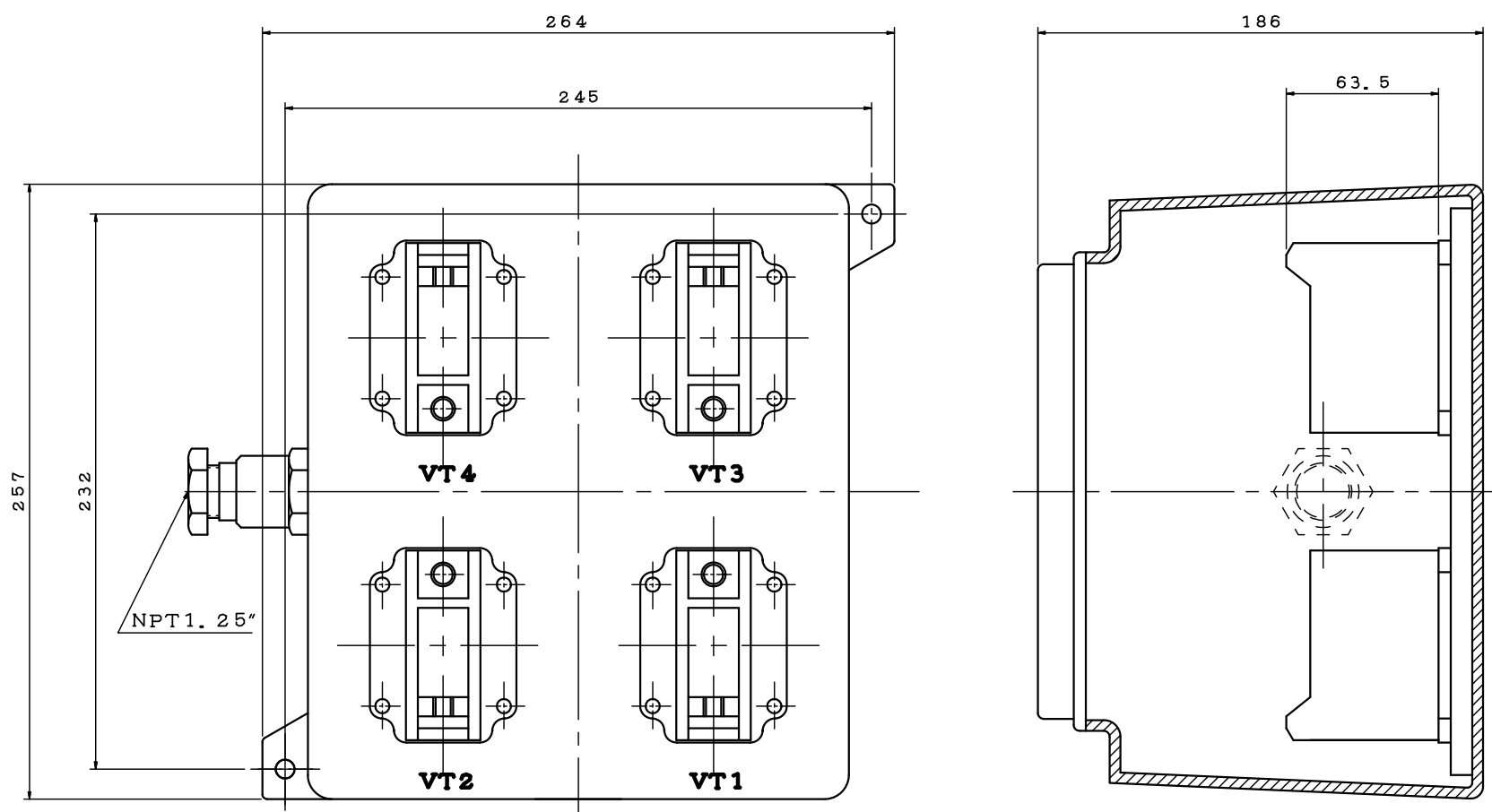
Please confirm or comment, and return within 7 business days. Otherwise, these drawings will be deemed as certified and approved.

Approved by :
Order No.

NOTE :

1. DIMENSIONS IN MM (INCHES).
2. TX-05A
3. SPACE HEATER T-BOX.
4. ORDER NO. FD094211T1
FD103212T1.

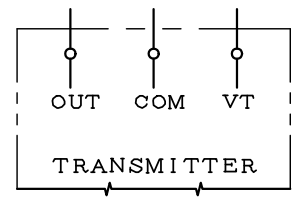
DWN.	C. LEONG	JUL•06•2000	TECO Westinghouse	DWG NO.	REV:03
CHKD.	B. YANG	JUL•10•2000		3A040D602	
APPD.	T. CHEN	JUL•10•2000			



FOR APPROVAL

Please confirm or comment, and return within
7 business days. Otherwise, these drawings
will be deemed as certified and approved.

Approved by :
Order No.



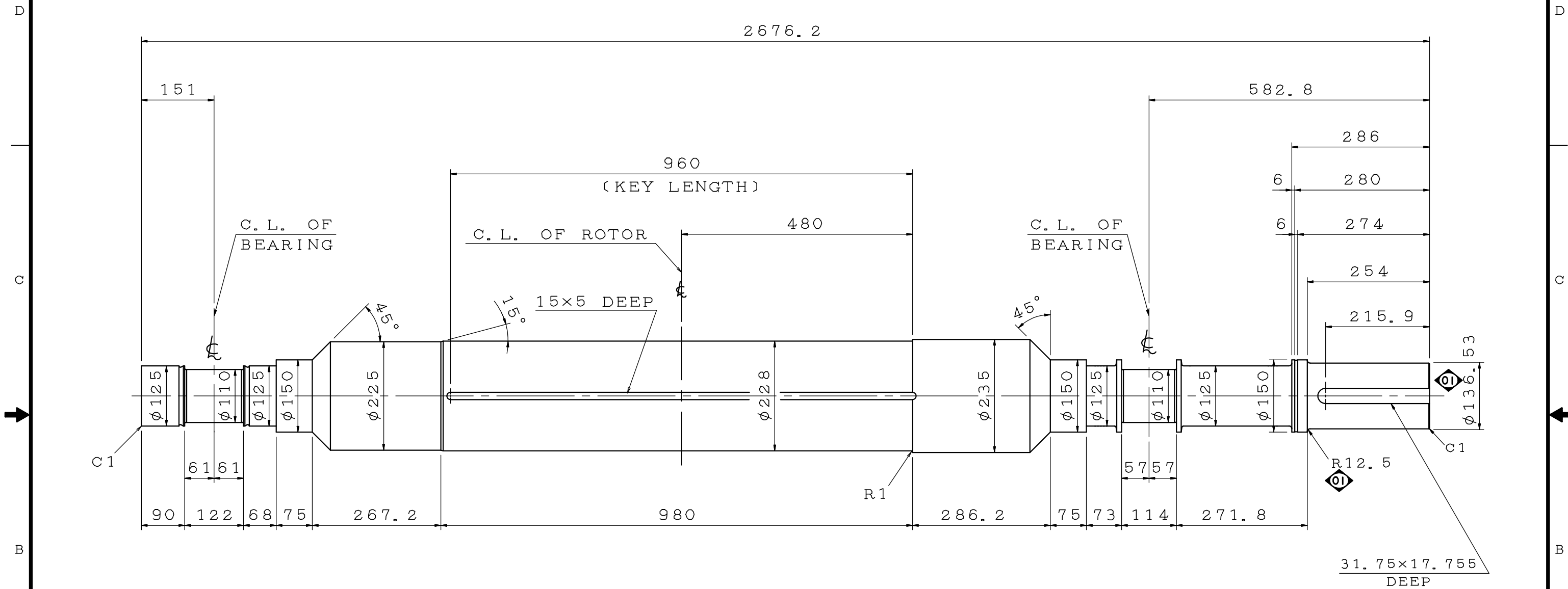
NOTE: 1. DIMENSIONS IN MM.
 2. BENTLY NEVEDA PROXIMITOR T-BOX.
 3. VT1 & VT2 FOR NON-DRIVE END
 VT3 & VT4 FOR DRIVE END.
 4. ORDER NO. FD094211T1.
 FD103212T1

DWN.	E. SU	JAN.16.2010
CHKD.	C. SHIH	JAN.16.2010
APPD.	B. YANG	JAN.16.2010

DATE JAN. 18 2010	SCHMATIC DRAWING
	TERMINAL BOX
TECO® Westinghouse	DWG NO. REV:00 4A040H586

NON-DRIVE END

DRIVE END



FOR APPROVAL

Please confirm or comment, and return within 7 business days. Otherwise, these drawings will be deemed as certified and approved.

Approved by :
Order No.

NOTE :
1. DIMENSIONS IN MM.
2. ORDER NO. FD094211T1
FD103212T1.

TORSIONAL ANALYSIS DATA

MOTOR WR^2 : 75.1 KG-M²

SHAFT TORSIONAL STIFFNESS: 2.62 E08 KG-MM/RADIAN
(FROM ROTOR CENTERLINE TO COUPLING END OF SHAFT) (FOR REFERENCE ONLY)

SHAFT MATERIAL: JIS G 4105 SCM440 (AISI 4140 EQUIV.)

SHAFT ULTIMATE TENSILE STRENGTH: 100 KG/MM² MIN

SHAFT YIELD STRENGTH IN TENSION: 85 KG/MM² MIN

SHAFT SHEAR MODULUS OF RIGIDITY: 8300 KG/MM²

DWN.	C. LEONG	DEC.12.2008
CHKD.	C. SHIH	JAN.14.2009
APPD.	C. WANG	JAN.15.2009

DATE	DEC.22.2009	SCHEMATIC DRAWING	
		SHAFT	
		DWG NO.	REV:01
		3B040T635	



PART NAME	SKETCH	ITEM	SPEC.	QUANTITY		PART NUMBER
				WORKING FOR 1 SET	TOTAL (PCS/UNIT)	
SLEEVE BEARING		1	D. E. BRG SIZE #11-110	1	1	3A231C0151600
		2	N. D. E. BRG SIZE #11-110	1	1	3A231C0151600
OIL RING		3	D. E. BRG SIZE #11-110	1	1	3A236C0250108
		4	N. D. E. BRG SIZE #11-110	1	1	3A236C0250108
FLOATING LABYRINTH SEAL		5	D. E. BRG SIZE #11	2	2	3A206C0080301
		6	N. D. E. BRG SIZE #11	1	1	3A206C0080301

FOR APPROVAL

Please confirm or comment, and return within 7 business days. Otherwise, these drawings will be deemed as certified and approved.

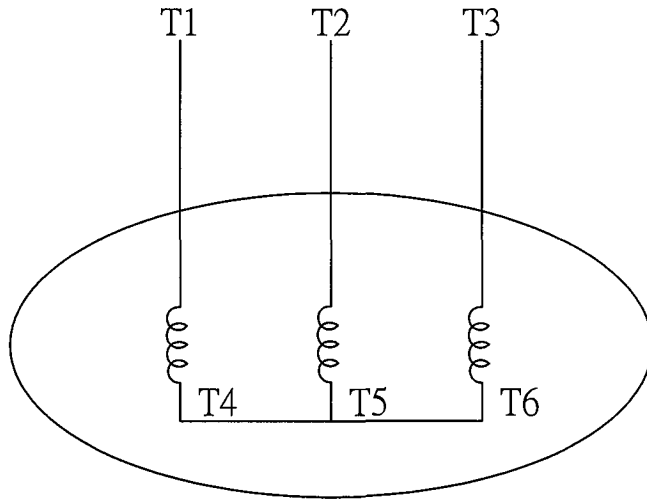
Approved by :
Order No.

CUSTOMER : TWMC
MACHINE : 4P-4000HP COMPRESSOR MOTOR
ORDER NO. : FD094211T1x6
 FD103212T1x5

DATE	DEC.22.2009	SCHEMATIC DRAWING	
		SPARE PARTS LIST	
DWN.	C. LEONG	DEC.12.2008	DWG NO.
CHKD.	C. SHIH	JAN.14.2009	REV:00
APPD.	C. WANG	JAN.15.2009	3B040Z687



DATE DEC.22.2009	SCHEMATIC WYE CONN 6 LEADS	MODEL

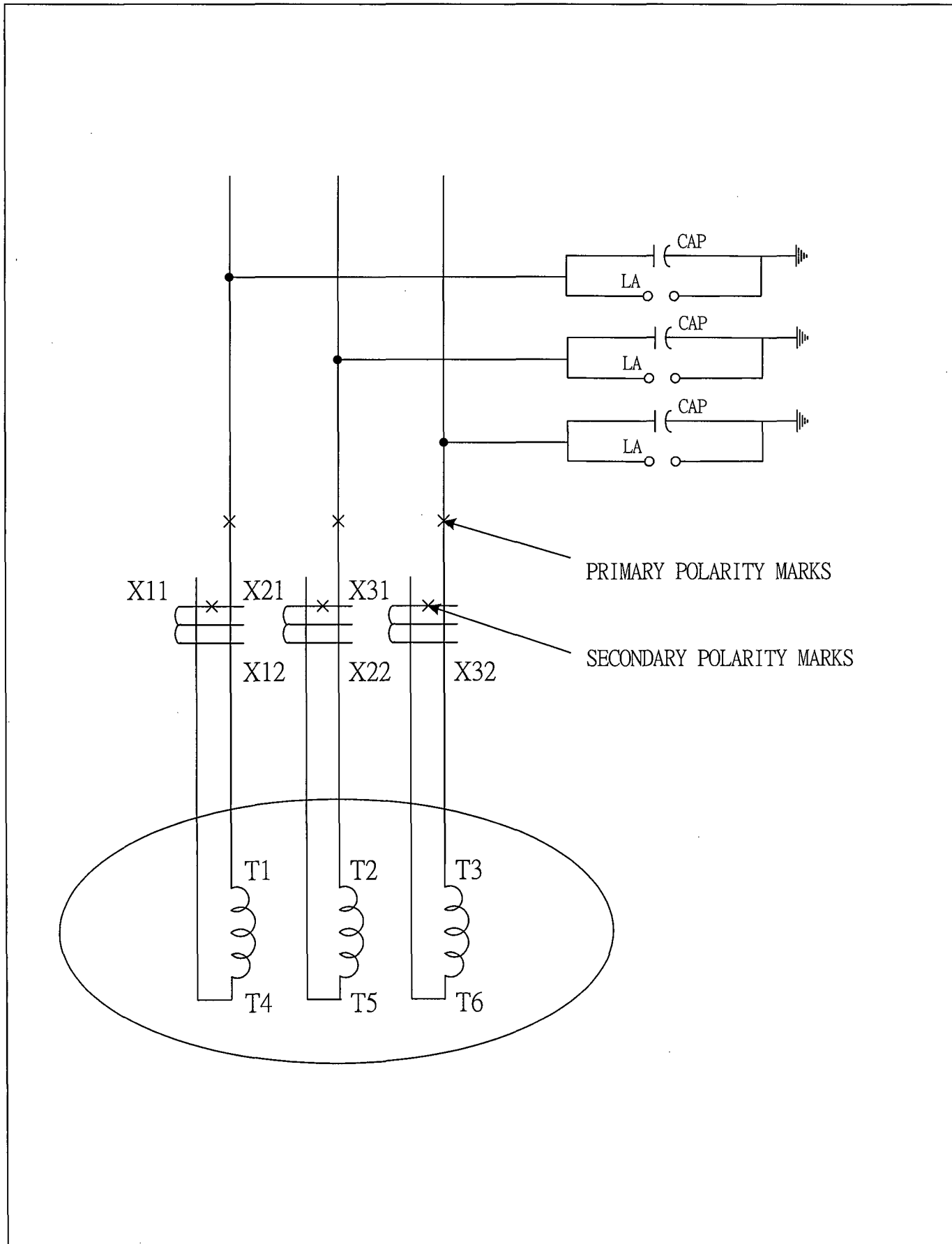


SCHEMATIC - WYE CONN - 6 LEADS

CONNECTION	ROTATION (VIEWED FROM DRIVE END)

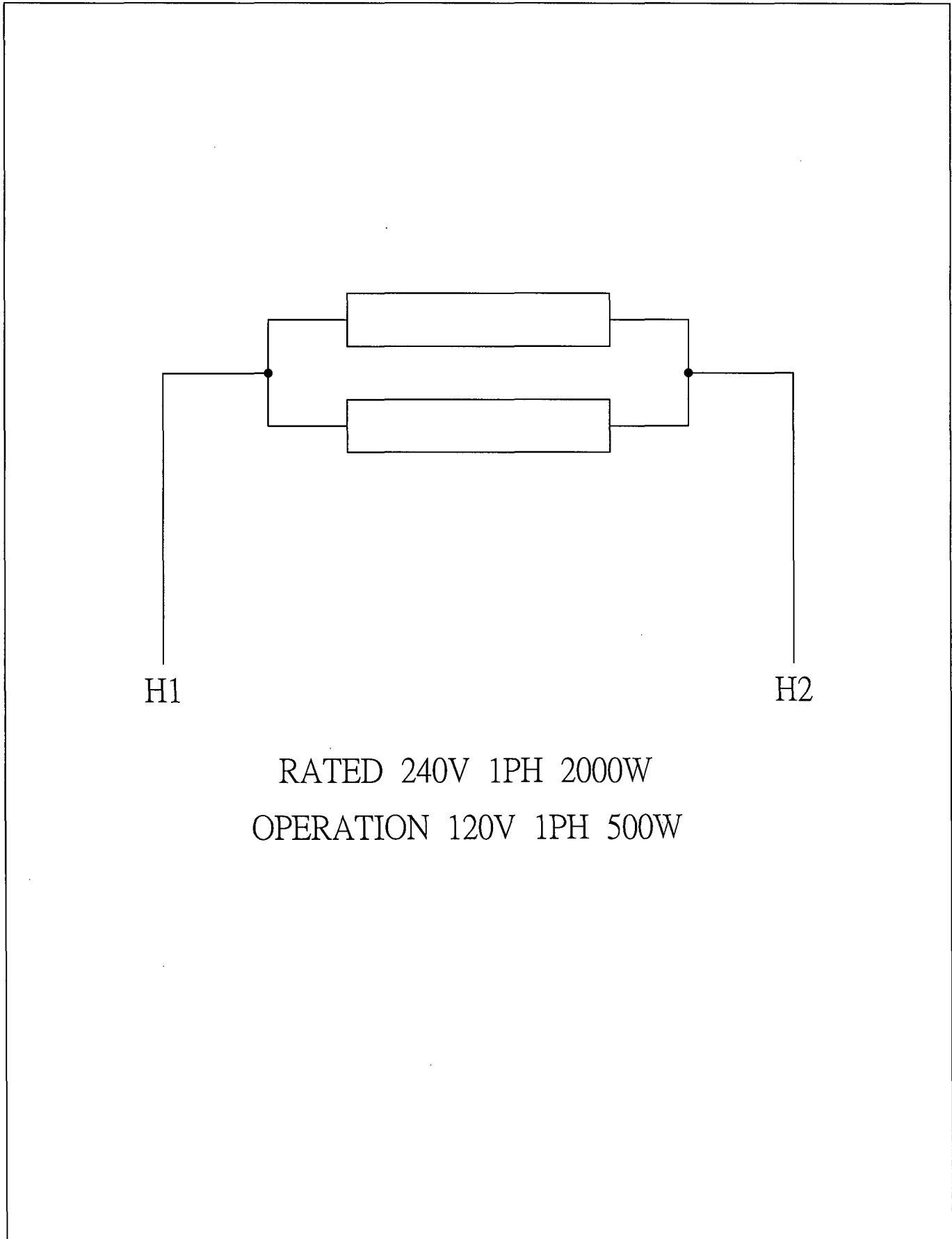
DWN.	S.HUANG	MAR · 03 · 2003	TECO Westinghouse	DWG NO.	REV: 00
CHKD.	T.HSIAO	MAR · 03 · 2003		3 A 0 6 1 H 4 6 7	
APPD.	T.HSIAO	MAR · 03 · 2003			

DATE	DEC.22.2009	6 LEADS SC&LA&CT	MODEL
		CONNECTION DIAGRAM	



DWN.	S.HUANG	MAR · 03 · 2003	TECO Westinghouse	DWG NO.	REV: 00
CHKD.	T.HSIAO	MAR · 03 · 2003		3 A 0 6 1 H 4 7 8	
APPD.	T.HSIAO	MAR · 03 · 2003			

DATE	DEC.22.2009	SCHEMATIC SPACE HEATER	MODEL

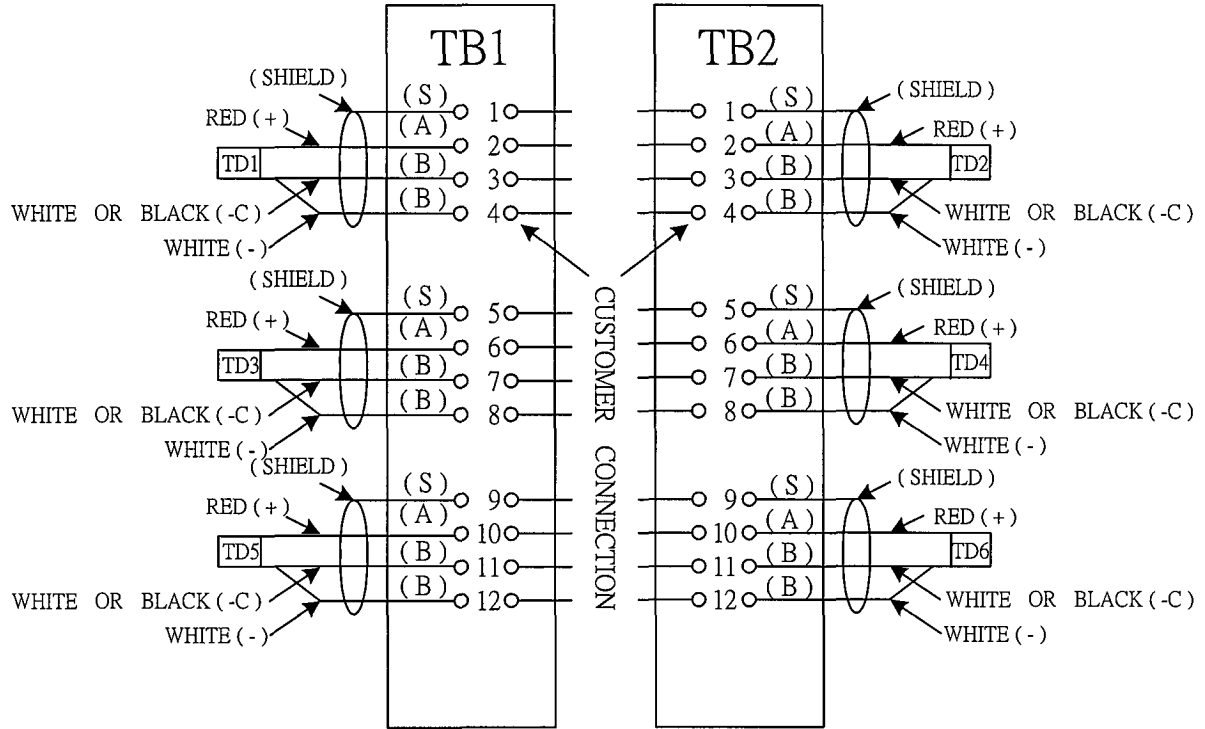


DWN.	S.HUANG	NOV · 10 · 2006	TECO  Westinghouse	DWG NO.	REV: 00	
CHKD.	T.HSIAO	NOV · 10 · 2006		3 A 0 6 1 H 3 2 0		
APPD.	T.HSIAO	NOV · 10 · 2006				

DATE
DEC.22.2009

WIRING DIAGRAM

MODEL



DWN.	S.HUANG	MAR · 03 · 2003
CHKD.	T.HSIAO	MAR · 03 · 2003
APPD.	C.Y.HUANG	MAR · 03 · 2003

TECO  **Westinghouse**

DWG NO. REV: 00

3 A 0 6 1 H 5 1 2