

# ATEX MANUAL



**Explosion Protection  
Intrinsic Safety EN50020**

**Long and Shortstroke  
Positions Transmittere**



**ISO 9001 : 2000**



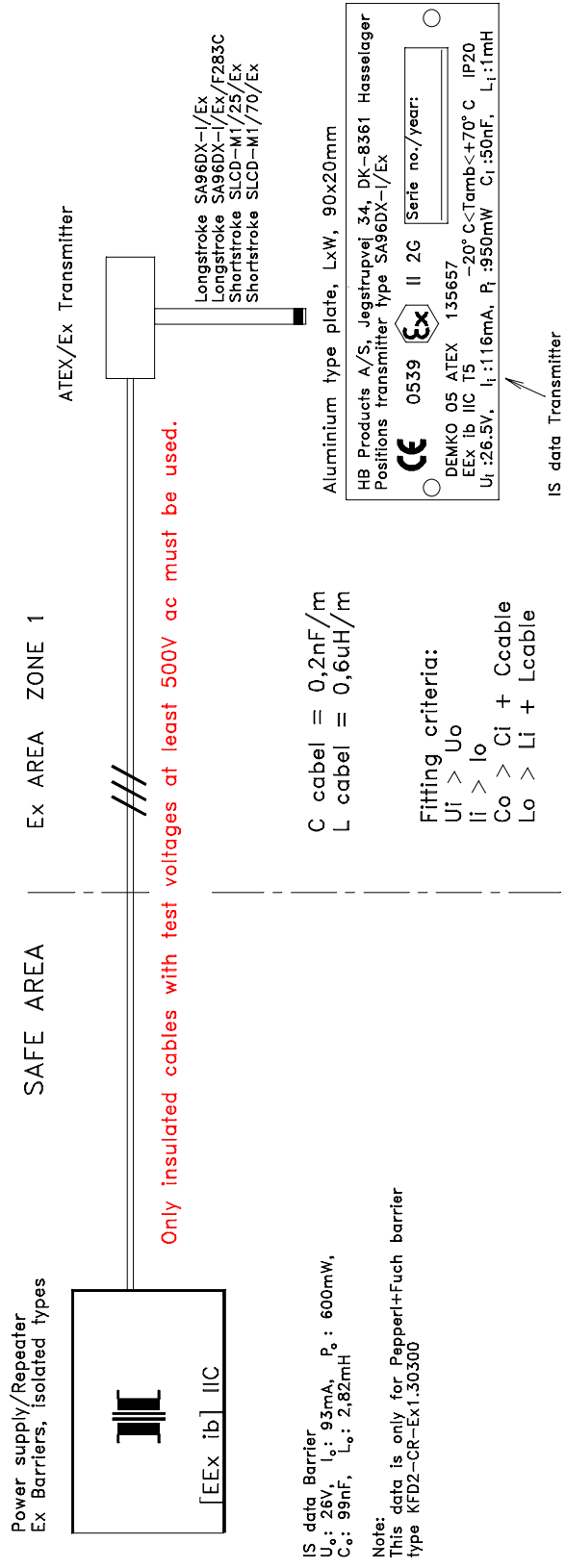
**HB**

**Products**





# Installation example in Ex area zone 1



**NOTE:**

POWER SUPPLY/AMPLIFIER HAS TO MEET FOLLOWING DATA:

SUPPLY VOLTAGE : .....12-26,5V DC

SHORT-CIRCUIT CURRENT : .....min. 50mA

TRANSFORMER TYPE: .....isolated

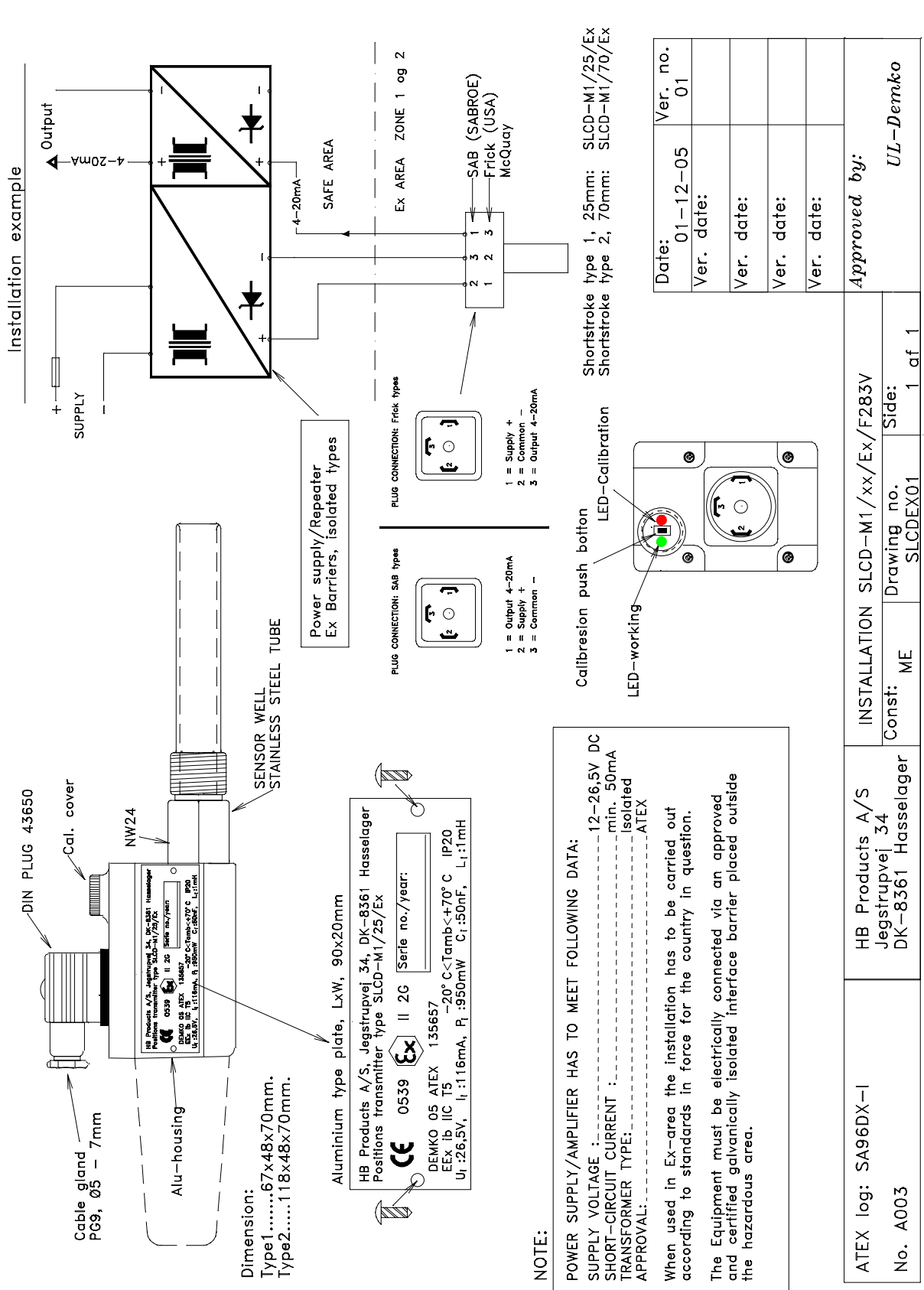
APPROVAL: .....ATEX

When used in Ex-areg the installation has to be carried out according to standards in force for the country in question.

The Equipment must be electrically connected via an approved and certified galvanically isolated interface barrier placed outside the hazardous area.

In this case: Explosion group IIC  
 L cable max =  $L_o - L_i = 2,3\text{mH}$   
 C cable max =  $C_o - C_i = 49\text{nF}$   
 i.e. Max. cable length  $49/0,2 = 245$  Meters

ATEX log: SA96DX-I	HB Products A/S Jegstrupvej 34 DK-8361 Hasselager	INSTALLATION: SA96DX-I/F283C/SLCD-M1___/Ex
No. A002 page 2	Const: ME	Page: 2 of 2
		Approved by: <i>UL-Dermko</i>
		Date: 01-12-05
		Ver. no. 01
		Ver. date:



Dimension:  
Type1.....67x48x70mm.  
Type2.....118x48x70mm.

Aluminium type plate, LxW, 90x20mm

HB Products A/S, Jegstrupvej 34, DK-8361 Hasselager  
Positions transmitter type SLCD-M1/25/Ex

CE 0539 II 2G Serie no./year:

DEMKO 05 ATEX 135657 -20°C<Tamb<+70°C IP20  
EEx Ib IIC T5 U<sub>i</sub>:26,5V, I<sub>i</sub>:116mA, P<sub>i</sub>:950mW C<sub>i</sub>:50nF, L<sub>i</sub>:1mH

**NOTE:**

POWER SUPPLY/AMPLIFIER HAS TO MEET FOLLOWING DATA:

SUPPLY VOLTAGE : 12-26,5V DC  
SHORT-CIRCUIT CURRENT : min. 50mA  
TRANSFORMER TYPE: isolated  
APPROVAL: ATEX

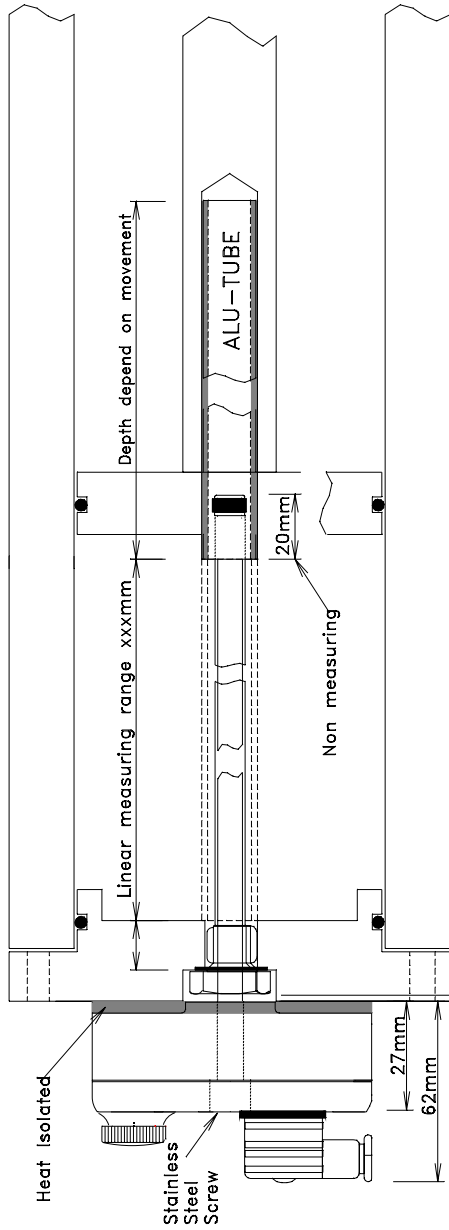
When used in Ex-area the installation has to be carried out according to standards in force for the country in question.

The Equipment must be electrically connected via an approved and certified galvanically isolated interface barrier placed outside the hazardous area.

ATEX log: SA96DX-I	HB Products A/S Jegstrupvej 34 DK-8361 Hasselager	INSTALLATION SLCD-M1/xx/Ex/F283V
No. A003	Const: ME	Drawing no. SLCD-EX01
		1 af 1

Approved by:		Ver. no.
		01
		Ver. date:
		Ver. date:
		Ver. date:
		Ver. date:

## ATEX Mounting Instruction for all Frick and SAB Compressors



**NOTE:**  
 IMPORTANT:  
 Air gab min. 1mm

Heat isolator should be mounted between kompressor and alu-housing, fixed with M6 stainless steel Head Cap Screw, to avoid heat transmission from the compressor to the transmitter housing.

ATEX type:

To save power on the ATEX type the LED's switch OFF after 5min.  
 To activate the LED push once on the push button.

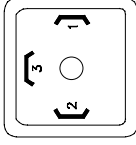
Calibration must be done before operation:

1. Apply Supply voltage min. 5 min. before Calibration.
2. Push the Cal. switch for 5 sek. to get the transmitter in Calibration mode  
 the red LED change from normal flash to OFF.
3. Move the Slide valve to 0% position, and then push the calibration's button once,  
 the red LED is now constantly ON, when the red LED switch OFF its ready for 100% calibration.
4. Now move the Slide valve to 100% position, and push the calibration button twice,  
 the red LED flash quickly, when the red LED flash normally the calibration is done.

\* The green LED indicate end position.

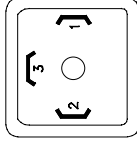
<1% = green LED flash.  
 >99% = green LED ON.

PLUG CONNECTION FRICK



1 = SUPPLY +  
 2 = COMMON -  
 3 = OUT 4-20mA

PLUG CONNECTION SABROE



1 = OUT 4-20mA  
 2 = SUPPLY +  
 3 = COMMON -

