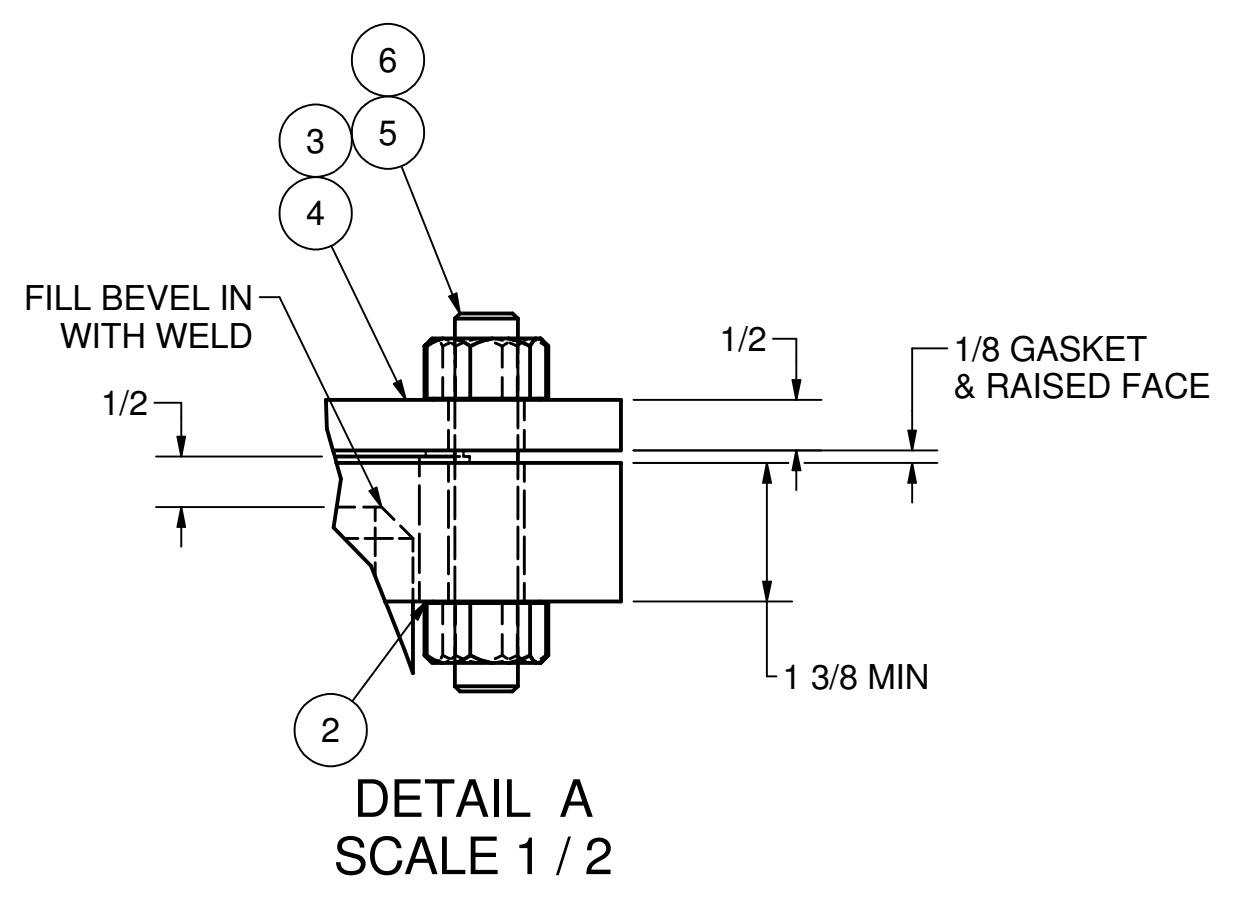
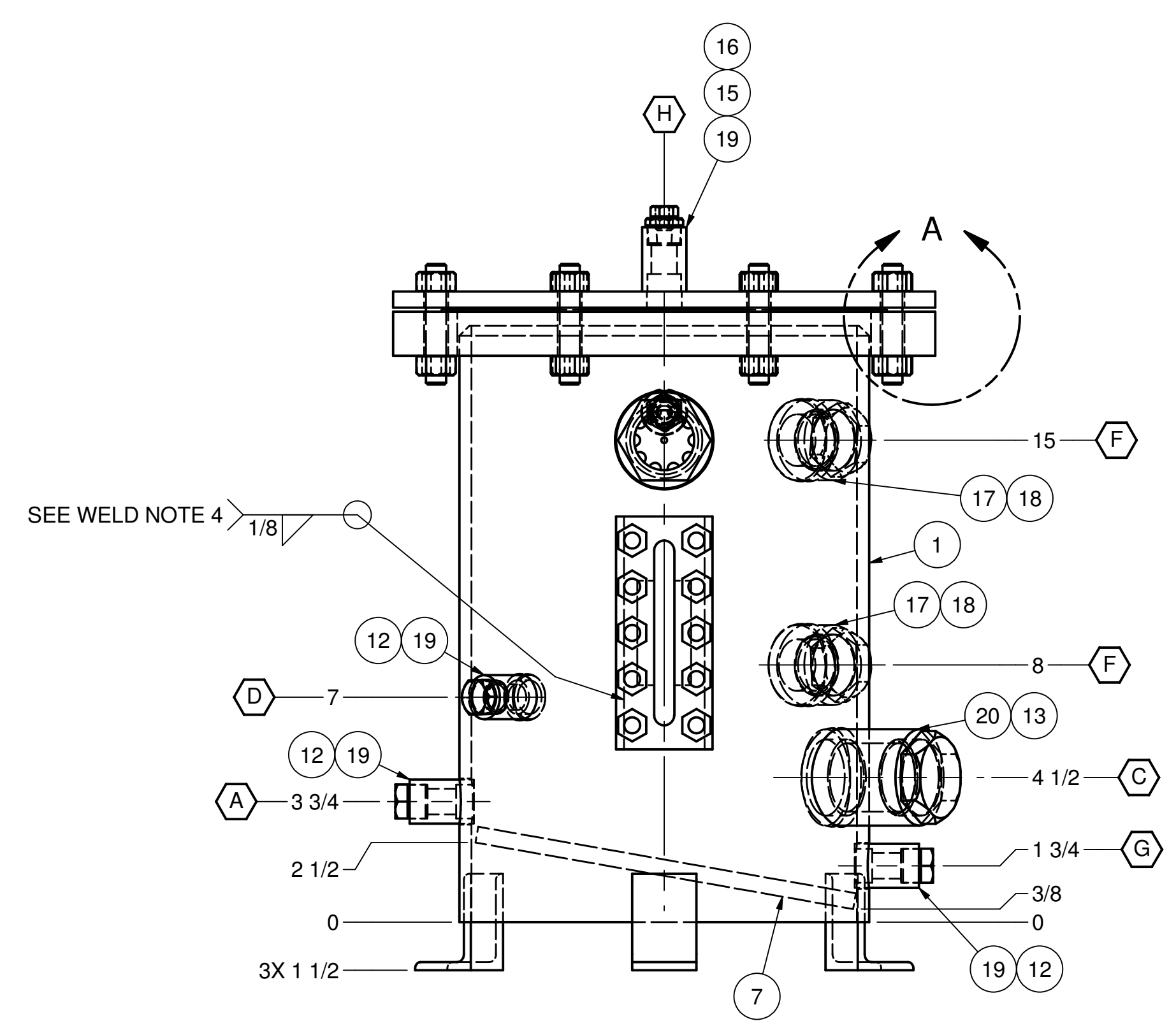
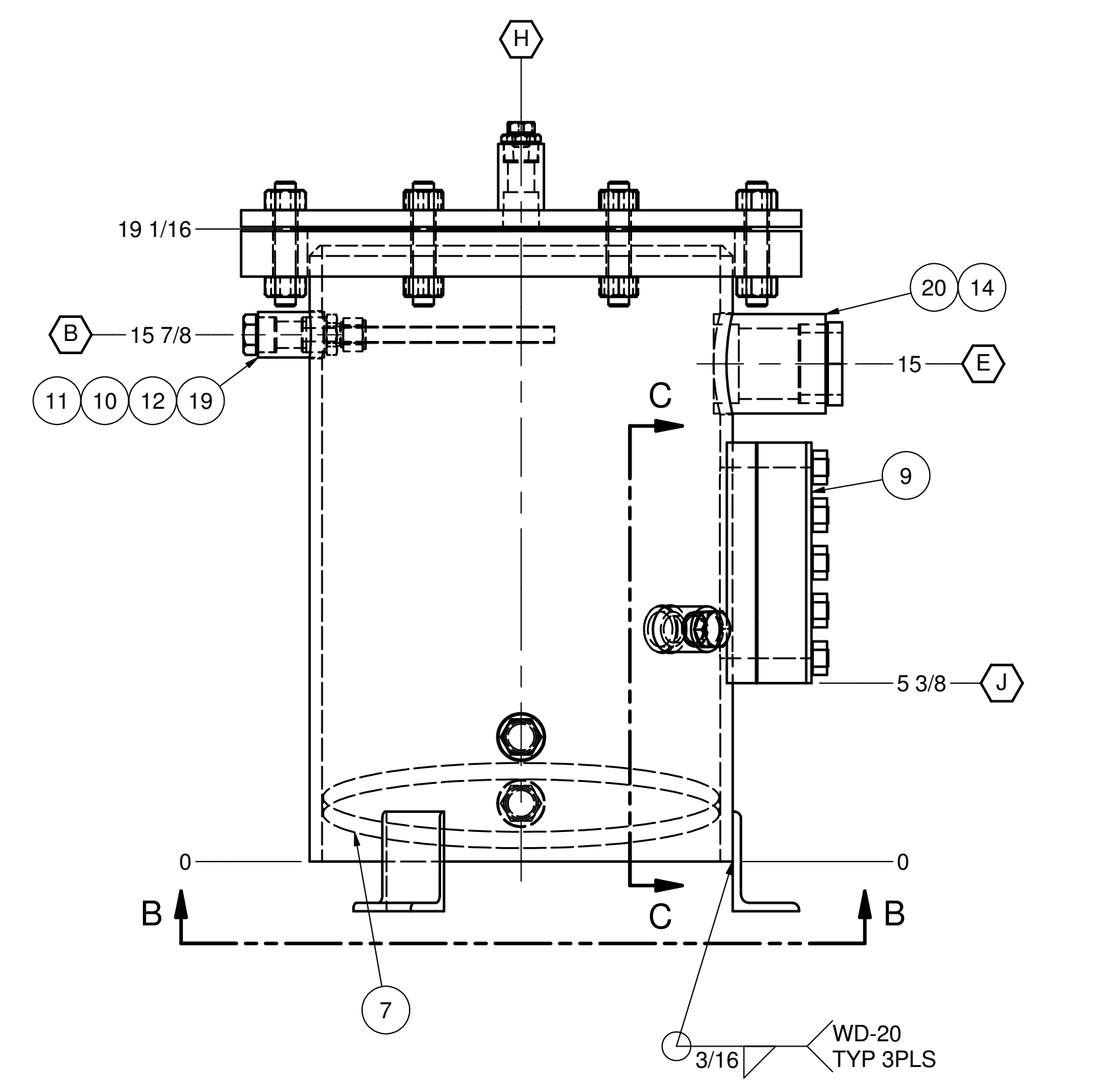
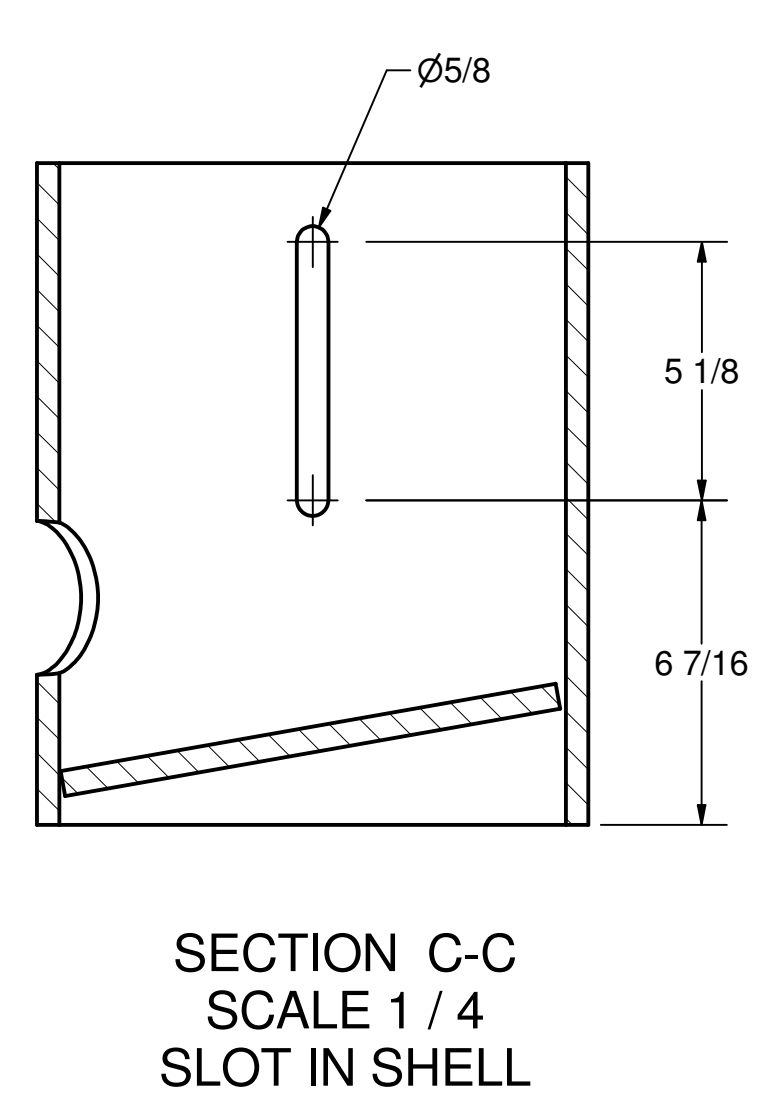
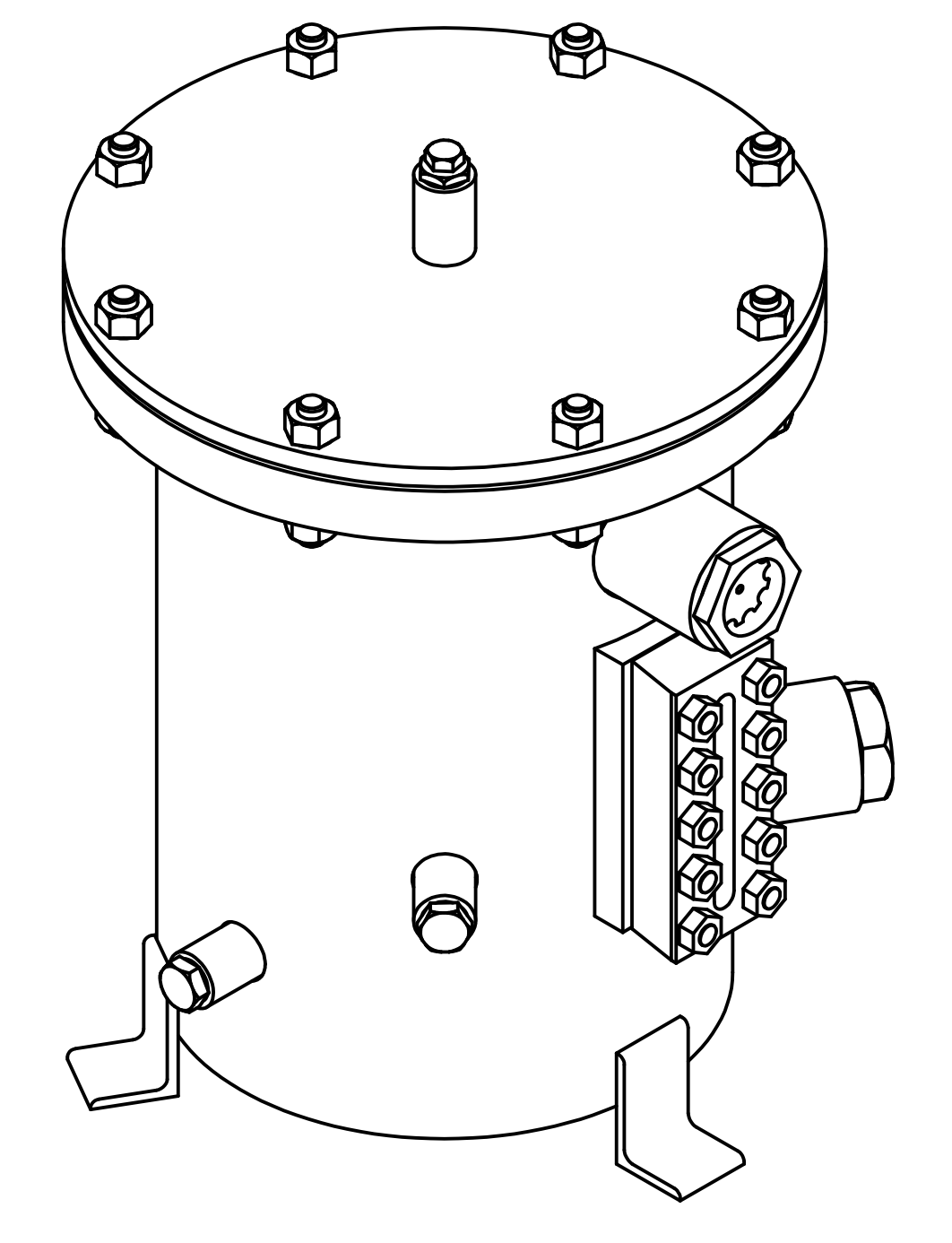
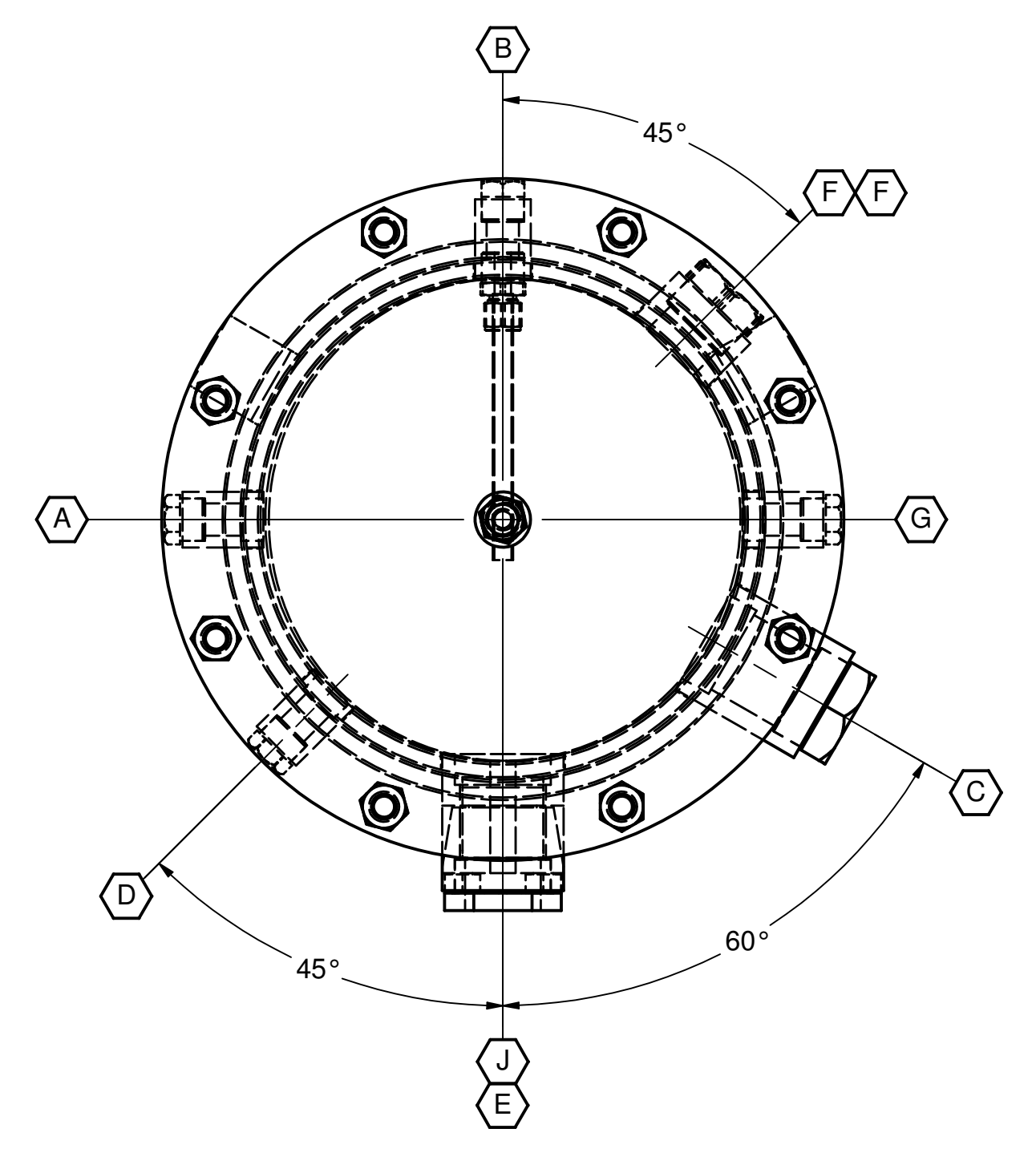
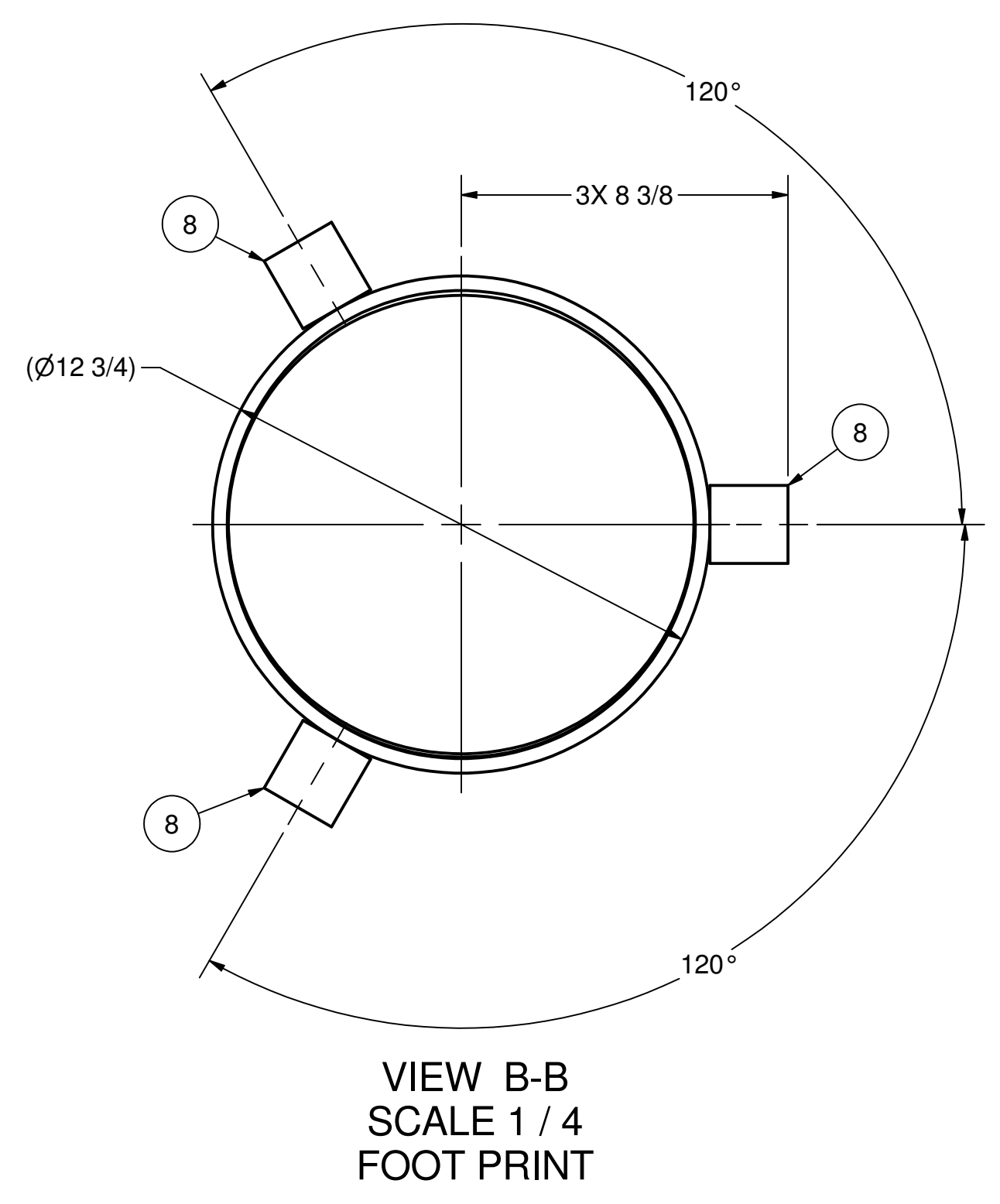


REVISION HISTORY							
ZONE	REV	ECN	DESCRIPTION	DATE	DR	CHK	APPD
ALL	A		CORRECTED MATERIAL FOR 848E1949H03 & H04	6/16/2009	JEC	CJB	CJB
ALL	B		ADDED BEVEL TO SHELL AND BEVEL NOTE ON RING FLANGE DETAIL.	7/28/2009	JEC	CJB	CJB



Parts List				
ITEM	PART NUMBER	QTY	DESCRIPTION	MATERIAL
1	848E1949H01	1	PIPE, NPS-12 STD. WT. (.375 WALL) x 18 9/16" LG (REQ# 29410006P01)	SA-106-B MAT ORIGIN / MTR
2	848B0743H01	1	RING FLANGE, 16 7/8" OD x 1 1/2" NOM THK	SA-516-70 MAT ORIGIN / MTR
3	848B0746H01	1	GASKET, 13 3/4" OD x 13" ID x 1/16" THK	GARLOCK 3300
4	848B0742H01	1	COVER PLATE, 16 7/8" OD x 1/2" THK	SA-516-70 MAT ORIGIN / MTR
5	901A0098H10	8	STUD, 5/8-11UNC-2A X 3.75 INCHES LONG	SA-193-B7
6	902A0021H03	16	NUT, HEX HEAVY, 5/8 UNC	SA-194-2H
7	848E1949H02	1	END PLATE, 11 15/16" OD x 1/2" THK (REQ# 29410006P02)	SA-106-B MAT ORIGIN / MTR
8	848E1949H03	3	ANGLE, 2" x 3" x 1/4" x 2" LG	SA-36
9	29410052P26	1	SIGHT GAUGE, REFLEX, PENBERTHY	Carbon Steel
10	944A0180H14	1	FTG. MALE CONN	STEEL, STAINLESS
11	848E1949H04	1	TUBING, 1/2" OD x .049 WALL x 8" LG	ASTM A269 TP304 WELDED SS
12	944A0011H06	4	PLUG, PIPE, HEX HEAD, 3/4 NPT	SA-105
13	944A0011H10	1	PLUG, PIPE, HEX HEAD, 2 NPT	SA-105
14	947A0003H05	1	SIGHT GLASS	N/A
15	944A0010H09	1	BUSHING, HEX HEAD, 3/4 MPT X 1/4 FPT	ASTM A-105
16	540A0194G01	1	EVACUATION AND CHARGE KIT (TEMPORARY - REMOVE PRIOR TO START-UP)	SEE DRAWING
17	29410006P03	2	COUPLING HALF, NPS 1 1/2	SA-105 MAT ORIGIN / MTR
18	944A0011H09	2	PLUG, PIPE, HEX HEAD, 1 1/2 NPT	SA-105
19	944A0699H05	5	COUPLING, NPS 0.75, CL3000	SA-105 MAT ORIGIN / MTR
20	944A0699H09	2	COUPLING, NPS 2, CL3000	SA-105 MAT ORIGIN / MTR

CONNECTION LEGEND						
CONN	Qty	Size	Sch. / WT	Wall	Class	Description
A	1	3/4			3000 FPT CPLG	SA-182-F304 PUMP SUCTION
B	1	3/4			3000 FPT CPLG	SA-182-F304 OIL INLET
C	1	2			3000 FPT CPLG	SA-182-F304 HEATER
D	1	3/4			3000 FPT CPLG	SA-182-F304 THERMOMETER
E	1	2			3000 FPT CPLG	SA-182-F304 SIGHT GLASS
F	2	1 1/2			3000 FPT CPLG	SA-182-F304 LEVEL SWITCH
G	1	3/4			3000 FPT CPLG	SA-182-F304 DRAIN
H	1	3/4			3000 FPT CPLG	SA-182-F304 VENT
J	1	5/8 X 5 3/4				SIGHT GLASS

YORK Refrigeration

Drawing for Customer Approval

In order to meet delivery, drawing comments and/or approval must be received within the number of working days stated in the purchase order.

Drawing for Customer Information. Certified for Production

Customer changes may impact cost and delivery.

Certified for Production - No Revision Required

Customer has approved drawing with no changes required.

Certified for Production

Customer changes have been incorporated.

Certified As Built

QA must notify Engineering of all deviations from engineering drawings.

Ship To: **DDP SandRidge Energy**
C/O
 SandRidge Energy
 1601 N.W. Expressway
 Suite 1500
 Oklahoma City, OK 73118
 USA
 Phone: 29410001000

Fort Stockton, TX 79735
 USA
 Customer P/O: 27607-P-13_012,01

- NOTES:**
- ALLOW ADJUSTMENT IN EACH PLANE FOR EXTERNALLY PREFABRICATED PIPING.
 - ALL CONNECTIONS FURNISHED WITH EITHER PIPE CAPS, PIPE PLUGS OR TEMPORARY END PLATES. TEMPORARY END PLATES MUST BE REMOVED PRIOR TO OPERATION. IF THE NOZZLE PIPE NECK IS TO BE CUT DURING THE REMOVAL PROCESS, THE REMAINING PROJECTION, EXCLUDING WELD BEVEL.
 - BOLT TORQUE REQUIREMENTS: A. FINGER TIGHT B. HALF TORQUE - 40 FT-LB (55 N-m) C. FULL TORQUE VALUE - 80 FT-LB (100 N-m)
 - REFERENCE MMBB 4.06.5.0 - TORQUE REQUIREMENTS
 - REFERENCE MMBB 4.05.5.0 - PIPE SEALANT NEVER SECC/TEFLON TAPE
 - REFERENCE MMBB 4.09.5.1 - INTERIOR CLEANING AND PROTECTION
 - REFERENCE MMBB 4.09.7.7 - PAINTING SSP-201
 - REFERENCE MMBB 4.09.7.11 - PAINTING PARAMETERS FOR HIGH SOLID MATERIAL. DEHYDRATE AND CHARGE WITH 5 PSIG NITROGEN.
 - BREAK ALL SHARP CORNERS AND EDGES 1/64 - 1/32 CHAMFER OR RADIUS. VISUALLY INSPECT ONLY.
 - ASSEMBLY TO BE FREE OF BURRS, CHIPS AND WELD SPATTER.
 - PAINT VESSEL WITH ONE COAT OF AMERLOCK 400 PER MMBB 4.9.7.7

- DESIGN CONDITIONS:**
- VESSEL IS DESIGNED AS AN ATMOSPHERIC TANK
 - APPLICABLE CODE: NONE
 - DESIGN CONDITIONS: 15 PSIG AT 70-20 F
 - CORROSION ALLOWANCE: NONE
 - TANK CAPACITY: 8 GALLONS
 - TANK WEIGHT EMPTY: 200 POUNDS
 - TANK WEIGHT FULL: 300 POUNDS
 - SIZES ARE BASED ON ASME CODE SECTION VIII, DIVISION 1 METHODS

- WELD NOTES:**
- ALL WELDS TO BE CONTINUOUS UNLESS OTHERWISE SPECIFIED.
 - REFER TO DRAWING BEADIDS FOR VESSEL WELD JOINT DETAILS NOT SHOWN ON THIS DRAWING.
 - USE 1/4 INSL WELD PROCEDURES UNLESS OTHERWISE SPECIFIED.
 - REFER TO PEMBERTHY ICM 2966 ISSUED 1005 FOR DISASSEMBLY ASSEMBLY AND WELDING INSTRUCTIONS. USE 1-8-VSL WELD PROCEDURES FOR THIS WELD.

- QUALITY NOTES:**
- VISUAL EXAMINATION REQUIRED.
 - PRESSURE TEST NOT REQUIRED. EVACUATION AND CHARGE PROCESS WILL SERVE AS LEAK TEST.
 - MATERIAL MUST BE MANUFACTURED IN NORTH AMERICA, WESTERN EUROPE OR JAPAN.

YORK Refrigeration York International
 Refrigeration - Frick
 Waynesboro, PA 17268

UNLESS OTHERWISE SPECIFIED DIMENSIONS ARE IN INCHES DO NOT SCALE

THIRD ANGLE PROJECTION

UNLESS OTHERWISE SPECIFIED TOLERANCES PER ASME Y14.5

DEC 3PL FRACT ANGLE

DEC 3PL FRACT ANGLE

DR: J. CHAMRANO 6/10/2009

CHK: B. E. REEDER 6/16/2009

APPD: T. PALMER 6/16/2009

CODE: C. J. BOWERS 6/15/2009

TITLE: **RECOVERY TANK**
 12 3/4 OD x 16 LG

SCALE: 1:4

REV: **848E1949**

SHEET 1 OF 1