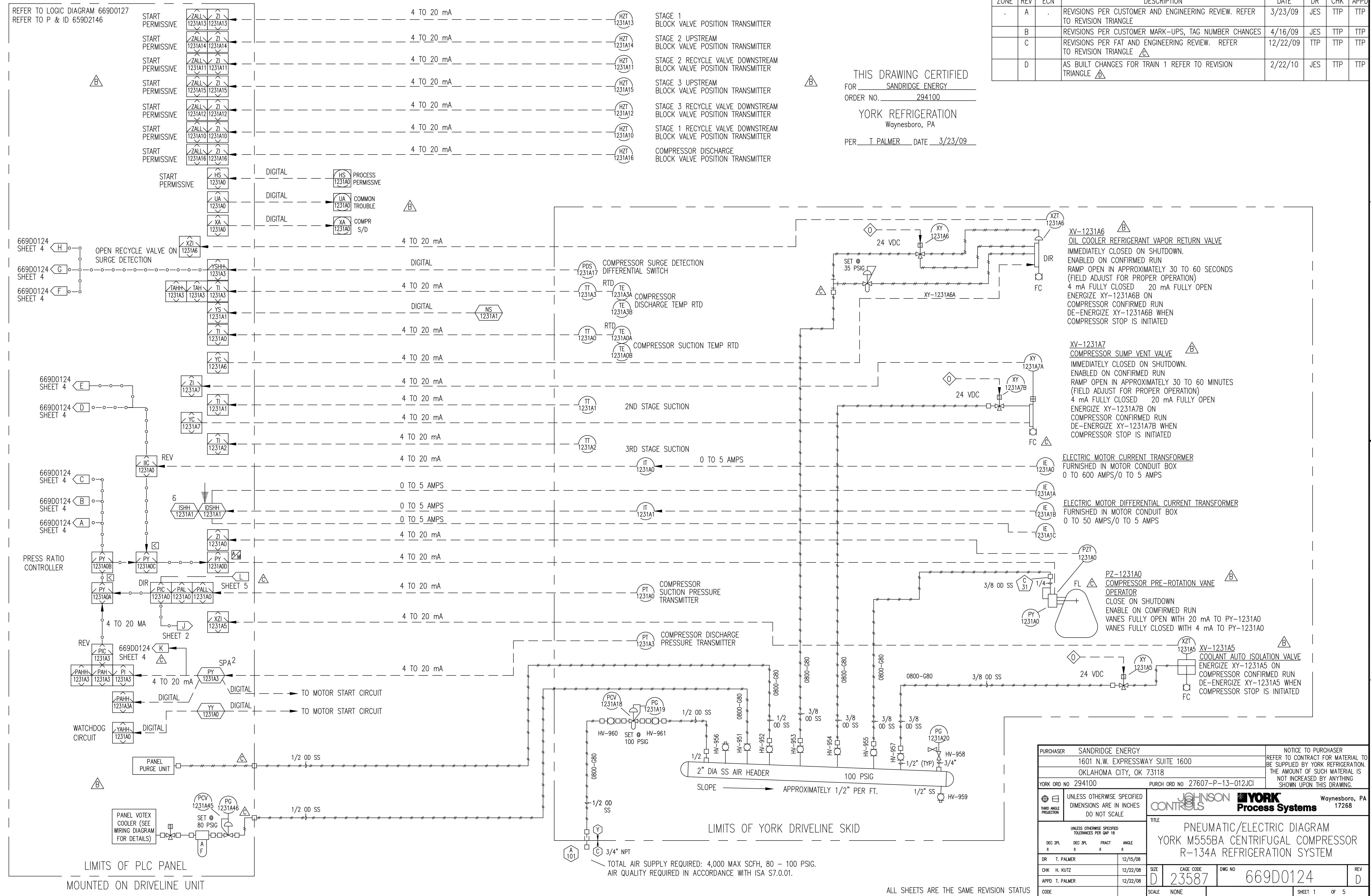


REVISION HISTORY							
ZONE	REV	ECN	DESCRIPTION	DATE	DR	CHK	APPD
	A		REVISIONS PER CUSTOMER AND ENGINEERING REVIEW. REFER TO REVISION TRIANGLE	3/23/09	JES	TTP	TTP
	B		REVISIONS PER CUSTOMER MARK-UPS, TAG NUMBER CHANGES	4/16/09	JES	TTP	TTP
	C		REVISIONS PER FAT AND ENGINEERING REVIEW. REFER TO REVISION TRIANGLE	12/22/09	TTP	TTP	TTP
	D		AS BUILT CHANGES FOR TRAIN 1 REFER TO REVISION TRIANGLE	2/22/10	JES	TTP	TTP

THIS DRAWING CERTIFIED  
 FOR SANDRIDGE ENERGY  
 ORDER NO. 294100  
 YORK REFRIGERATION  
 Waynesboro, PA  
 PER T PALMER DATE 3/23/09



**XV-1231A6**  
 OIL COOLER REFRIGERANT VAPOR RETURN VALVE  
 IMMEDIATELY CLOSED ON SHUTDOWN.  
 ENABLED ON CONFIRMED RUN  
 RAMP OPEN IN APPROXIMATELY 30 TO 60 SECONDS  
 (FIELD ADJUST FOR PROPER OPERATION)  
 4 mA FULLY CLOSED 20 mA FULLY OPEN  
 ENERGIZE XY-1231A6B ON  
 COMPRESSOR CONFIRMED RUN  
 DE-ENERGIZE XY-1231A6B WHEN  
 COMPRESSOR STOP IS INITIATED

**XV-1231A7**  
 COMPRESSOR SUMP VENT VALVE  
 IMMEDIATELY CLOSED ON SHUTDOWN.  
 ENABLED ON CONFIRMED RUN  
 RAMP OPEN IN APPROXIMATELY 30 TO 60 MINUTES  
 (FIELD ADJUST FOR PROPER OPERATION)  
 4 mA FULLY CLOSED 20 mA FULLY OPEN  
 ENERGIZE XY-1231A7B ON  
 COMPRESSOR CONFIRMED RUN  
 DE-ENERGIZE XY-1231A7B WHEN  
 COMPRESSOR STOP IS INITIATED

**IE-1231A0**  
 ELECTRIC MOTOR CURRENT TRANSFORMER  
 FURNISHED IN MOTOR CONDUIT BOX  
 0 TO 600 AMPS/0 TO 5 AMPS

**IE-1231A1A**  
 ELECTRIC MOTOR DIFFERENTIAL CURRENT TRANSFORMER  
 FURNISHED IN MOTOR CONDUIT BOX  
 0 TO 50 AMPS/0 TO 5 AMPS

**PZ-1231A0**  
 COMPRESSOR PRE-ROTATION VANE  
 OPERATOR  
 CLOSE ON SHUTDOWN  
 ENABLE ON CONFIRMED RUN  
 VANES FULLY OPEN WITH 20 mA TO PY-1231A0  
 VANES FULLY CLOSED WITH 4 mA TO PY-1231A0

**XV-1231A5**  
 COOLANT AUTO ISOLATION VALVE  
 ENERGIZE XY-1231A5 ON  
 COMPRESSOR CONFIRMED RUN  
 DE-ENERGIZE XY-1231A5 WHEN  
 COMPRESSOR STOP IS INITIATED

PURCHASER SANDRIDGE ENERGY		NOTICE TO PURCHASER	
1601 N.W. EXPRESSWAY SUITE 1600		REFER TO CONTRACT FOR MATERIAL TO	
OKLAHOMA CITY, OK 73118		BE SUPPLIED BY YORK REFRIGERATION.	
YORK ORD NO 294100		THE AMOUNT OF SUCH MATERIAL IS	
PURCH ORD NO 27607-P-13-012JCI		NOT INCREASED BY ANYTHING	
		SHOWN UPON THIS DRAWING.	
UNLESS OTHERWISE SPECIFIED DIMENSIONS ARE IN INCHES DO NOT SCALE		UNLESS OTHERWISE SPECIFIED TOLERANCES PER QWP 18	
THIRD ANGLE PROJECTION		JOHNSON CONTROLS YORK Process Systems	
Waynesboro, PA 17268		TITLE PNEUMATIC/ELECTRIC DIAGRAM YORK M555BA CENTRIFUGAL COMPRESSOR R-134A REFRIGERATION SYSTEM	
DR T. PALMER	12/15/08	SIZE	D
CHK H. KUTZ	12/22/08	CAGE CODE	23587
APPD T. PALMER	12/22/08	DWG NO	669D0124
CODE		SCALE	NONE
SHEET 1		OF 5	

LIMITS OF YORK DRIVELINE SKID  
 TOTAL AIR SUPPLY REQUIRED: 4,000 MAX SCFH, 80 - 100 PSIG.  
 AIR QUALITY REQUIRED IN ACCORDANCE WITH ISA S7.0.01.

ALL SHEETS ARE THE SAME REVISION STATUS

REFER TO LOGIC DIAGRAM 669D0127  
 REFER TO P & ID 659D2146

LIMITS OF PLC PANEL  
 MOUNTED ON DRIVELINE UNIT

LIMITS OF PLC PANEL  
MOUNTED ON DRIVELINE UNIT

LIMITS OF YORK DRIVELINE SKID

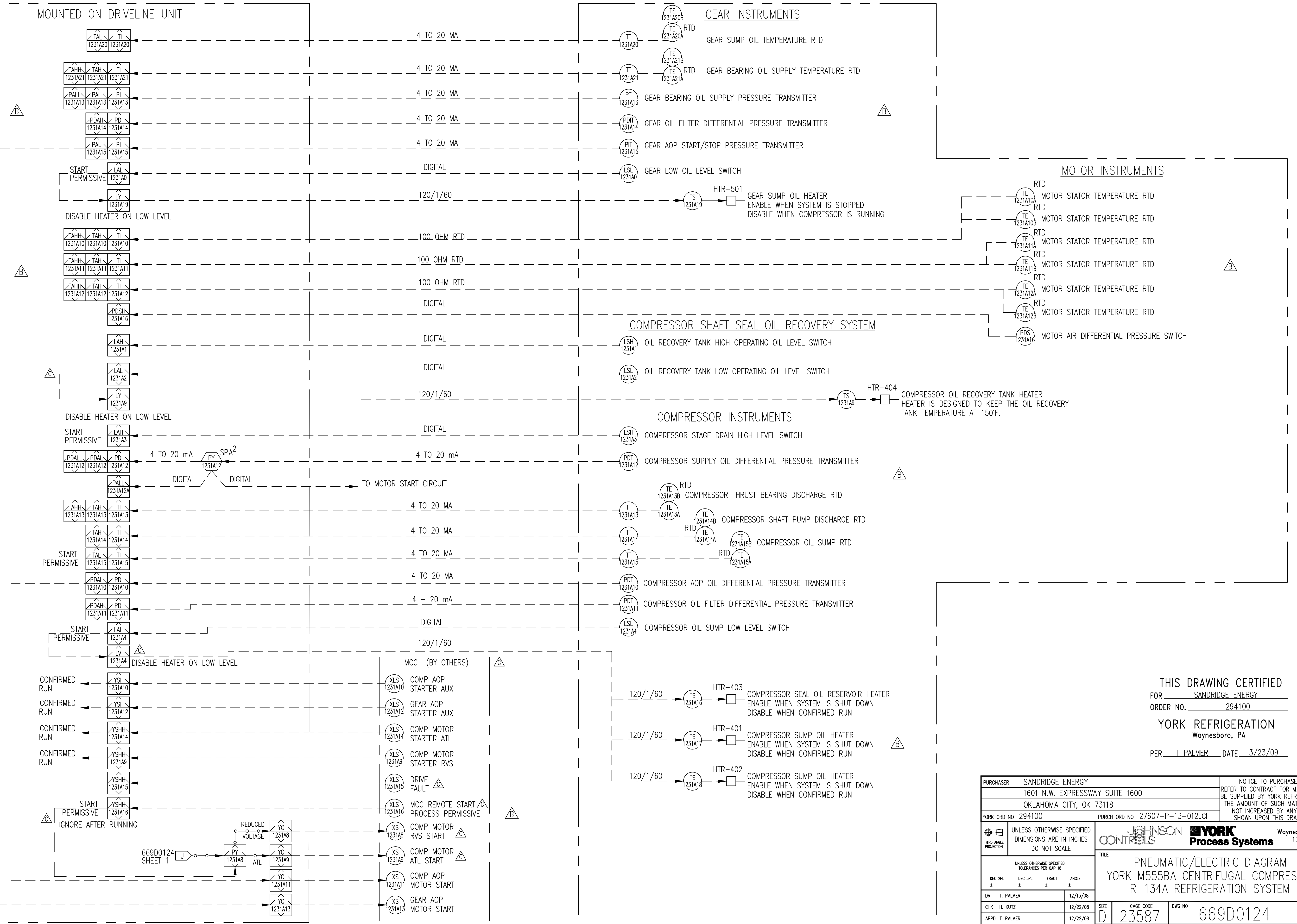
GEAR INSTRUMENTS

MOTOR INSTRUMENTS

COMPRESSOR SHAFT SEAL OIL RECOVERY SYSTEM

COMPRESSOR INSTRUMENTS

MCC (BY OTHERS)



THIS DRAWING CERTIFIED  
FOR SANDRIDGE ENERGY  
ORDER NO. 294100  
YORK REFRIGERATION  
Waynesboro, PA  
PER T. PALMER DATE 3/23/09

PURCHASER SANDRIDGE ENERGY 1601 N.W. EXPRESSWAY SUITE 1600 OKLAHOMA CITY, OK 73118		NOTICE TO PURCHASER REFER TO CONTRACT FOR MATERIAL TO BE SUPPLIED BY YORK REFRIGERATION. THE AMOUNT OF SUCH MATERIAL IS NOT INCREASED BY ANYTHING SHOWN UPON THIS DRAWING.	
YORK ORD NO 294100		PURCH ORD NO 27607-P-13-012JCI	
UNLESS OTHERWISE SPECIFIED DIMENSIONS ARE IN INCHES THRU ANGLE PROJECTION DO NOT SCALE			
TITLE PNEUMATIC/ELECTRIC DIAGRAM YORK M555BA CENTRIFUGAL COMPRESSOR R-134A REFRIGERATION SYSTEM			
DR T. PALMER	12/15/08	SIZE D	CAGE CODE 23587
CHK H. KUTZ	12/22/08	APPD T. PALMER	12/22/08
CODE	SCALE NONE	DWG NO 669D0124	REV D

ALL SHEETS ARE THE SAME REVISION STATUS

SHEET 2 OF 5

LIMITS OF PLC PANEL  
MOUNTED ON DRIVELINE SKID

LIMITS OF YORK DRIVELINE SKID

BENTLY NEVADA 3500 MONITOR

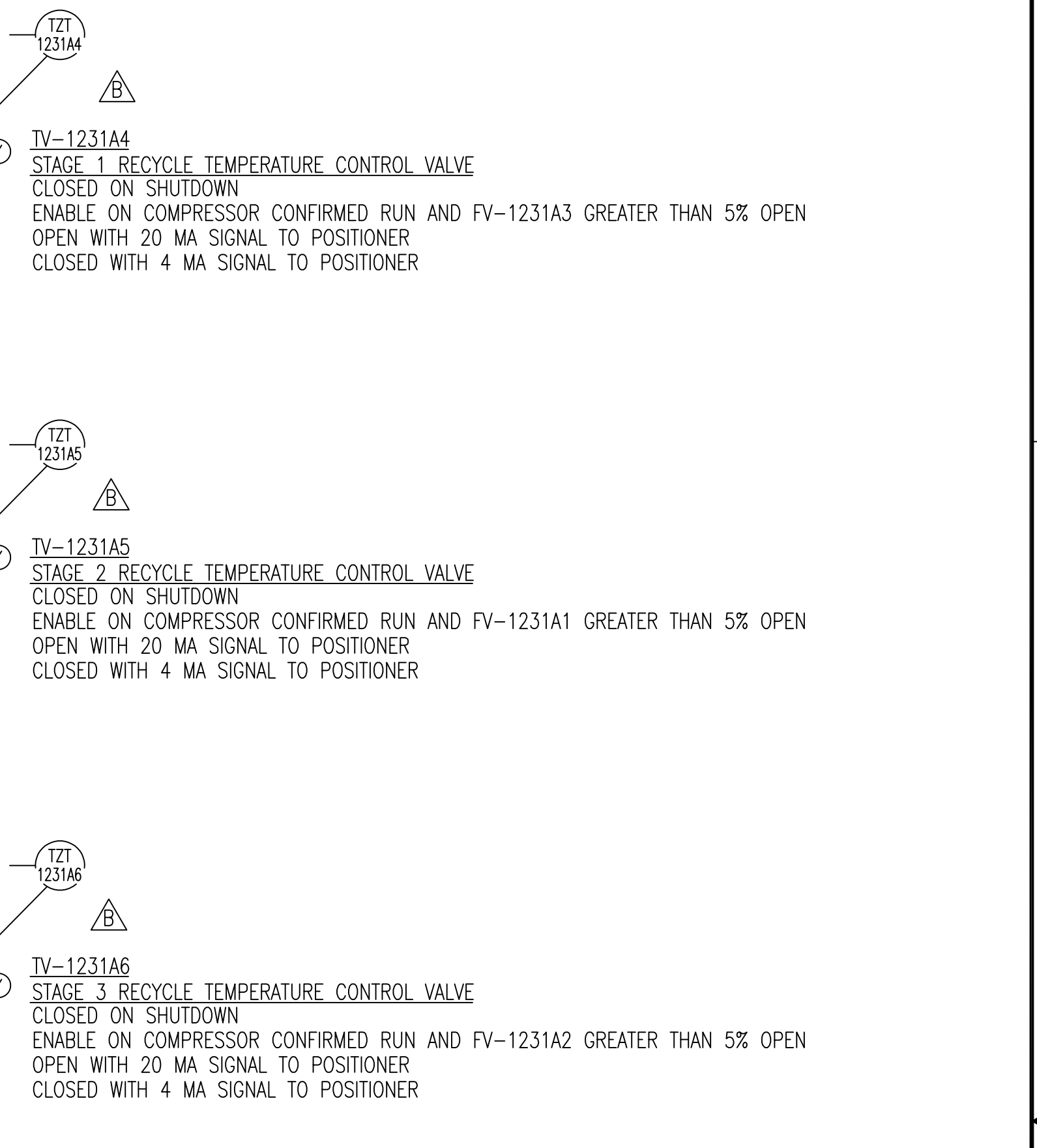
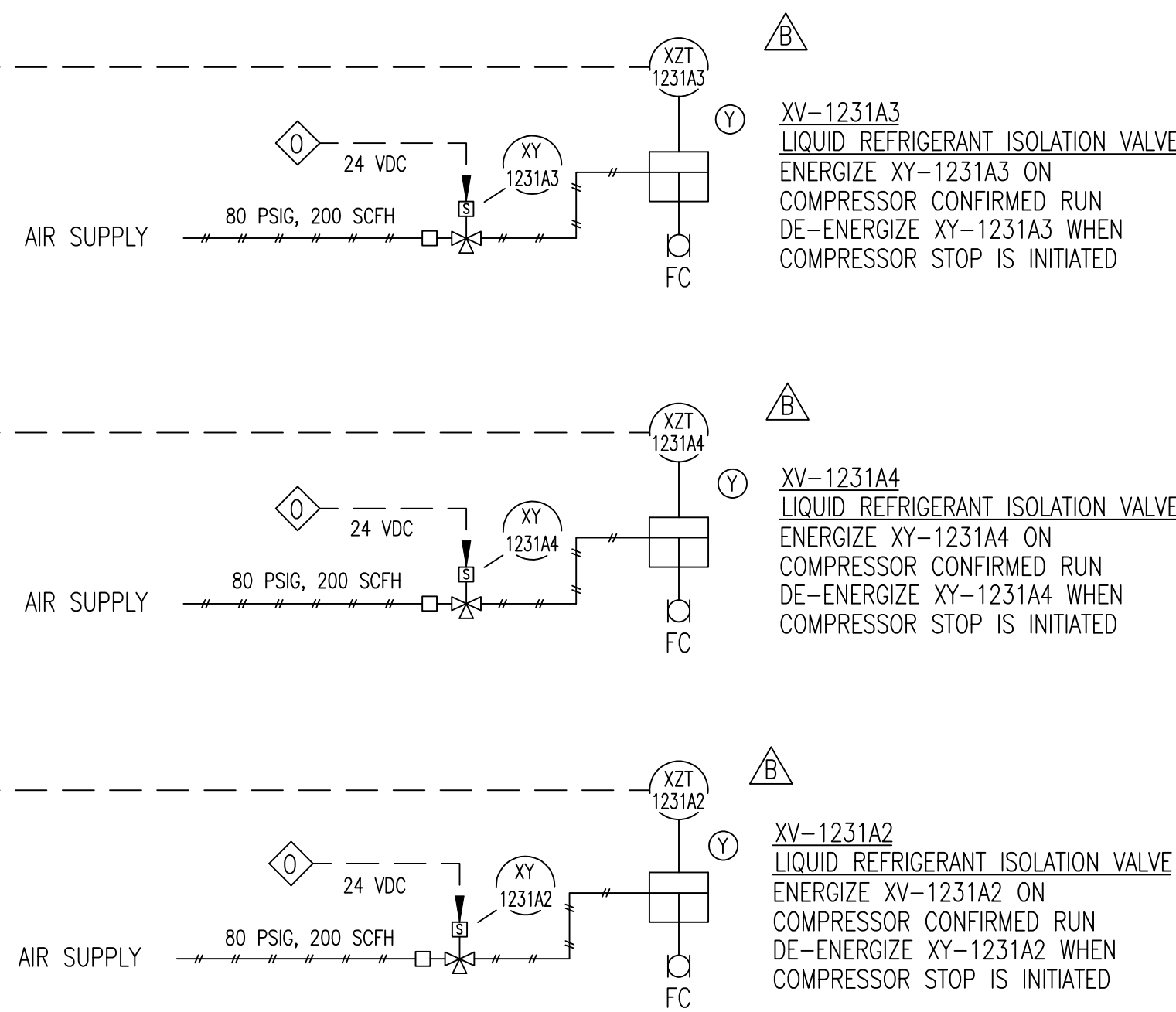
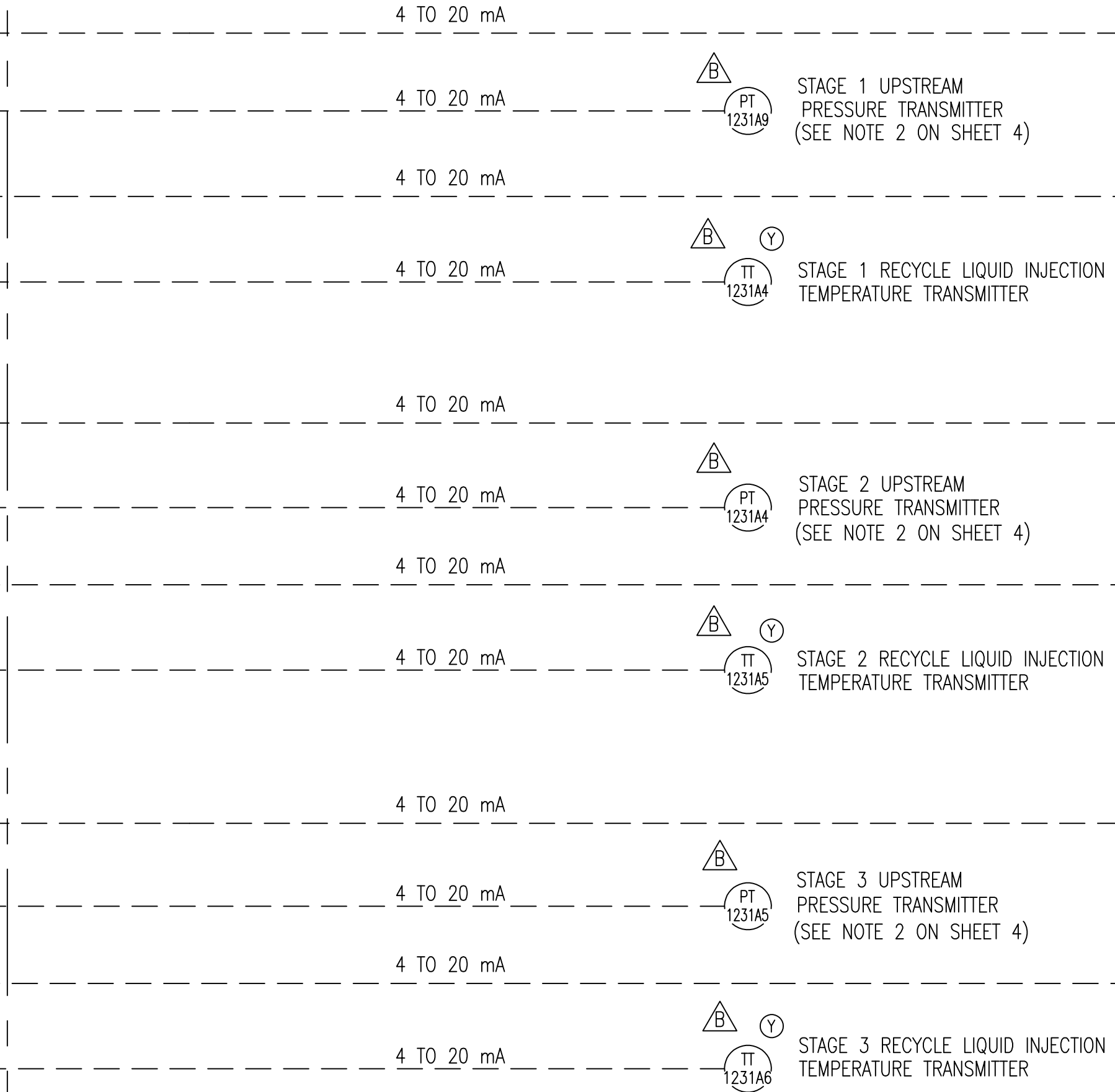
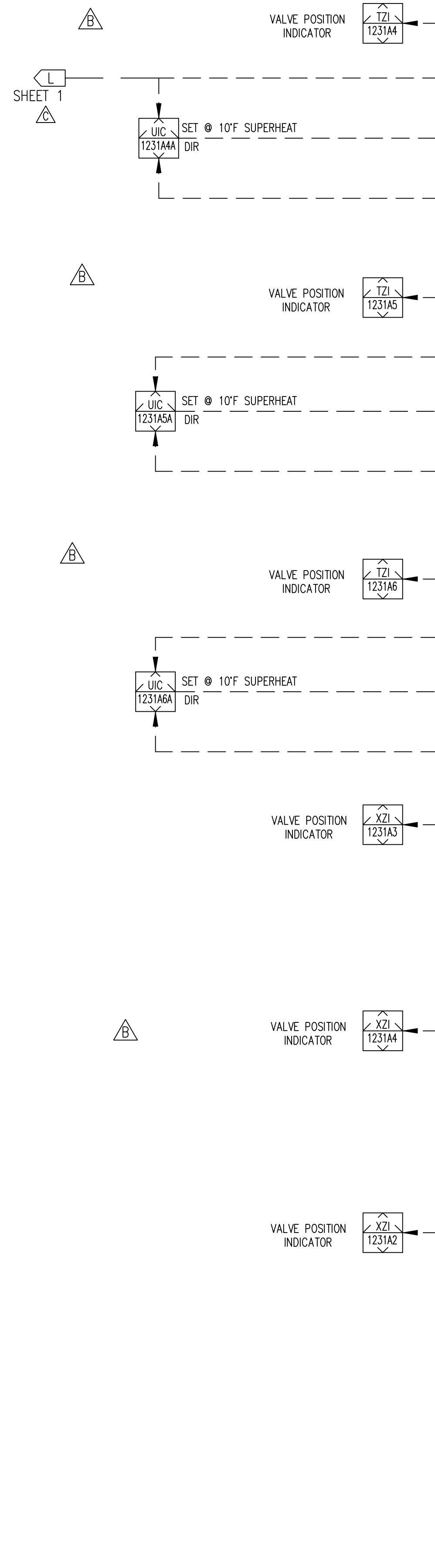


THIS DRAWING CERTIFIED  
FOR SANDRIDGE ENERGY  
ORDER NO. 294100  
YORK REFRIGERATION  
Waynesboro, PA  
PER T. PALMER DATE 3/23/09

PURCHASER SANDRIDGE ENERGY 1601 N.W. EXPRESSWAY SUITE 1600 OKLAHOMA CITY, OK 73118		NOTICE TO PURCHASER REFER TO CONTRACT FOR MATERIAL TO BE SUPPLIED BY YORK REFRIGERATION. THE AMOUNT OF SUCH MATERIAL IS NOT INCREASED BY ANYTHING SHOWN UPON THIS DRAWING.	
YORK ORD NO. 294100		PURCH ORD NO. 27607-P-013-012JCI	
UNLESS OTHERWISE SPECIFIED DIMENSIONS ARE IN INCHES DO NOT SCALE.			
TITLE PNEUMATIC/ELECTRIC DIAGRAM YORK M555BA CENTRIFUGAL COMPRESSOR R-134A REFRIGERATION SYSTEM			
DR T. PALMER	12/15/08	SIZE D	CAGE CODE 23587
CHK H. KUTZ	12/22/08	DWG NO. 669D0124	REV D
APPD T. PALMER	12/22/08	SCALE NONE	SHEET 3 OF 5



LIMITS OF PLC PANEL  
(MOUNTED ON DRIVELINE UNIT)



THIS DRAWING CERTIFIED  
FOR SANDRIDGE ENERGY  
ORDER NO. 294100  
YORK REFRIGERATION  
Waynesboro, PA  
PER T. PALMER DATE 3/23/09

PURCHASER SANDRIDGE ENERGY 1601 N.W. EXPRESSWAY SUITE 1600 OKLAHOMA CITY, OK 73118		NOTICE TO PURCHASER REFER TO CONTRACT FOR MATERIAL TO BE SUPPLIED BY YORK REFRIGERATION. THE AMOUNT OF SUCH MATERIAL IS NOT INCREASED BY ANYTHING SHOWN UPON THIS DRAWING.	
YORK ORD NO 294100	PURCH ORD NO 27607-P-13-012JCI	Waynesboro, PA 17268	
UNLESS OTHERWISE SPECIFIED DIMENSIONS ARE IN INCHES DO NOT SCALE.		YORK CONTROLS Process Systems	
UNLESS OTHERWISE SPECIFIED TOLERANCES PER QAP 18		TITLE PNEUMATIC/ELECTRIC DIAGRAM YORK M555BA CENTRIFUGAL COMPRESSOR R-134A REFRIGERATION SYSTEM	
DEC 2PL ±	DEC 3PL ±	FRACT ±	ANGLE ±
DR T. PALMER	12/15/08	SIZE D	CAGE CODE 23587
CHK H. KUTZ	12/22/08	DWG NO 669D0124	REV D
APPD T. PALMER	12/22/08	SCALE NONE	SHEET 5 OF 5

ALL SHEETS ARE THE SAME REVISION STATUS