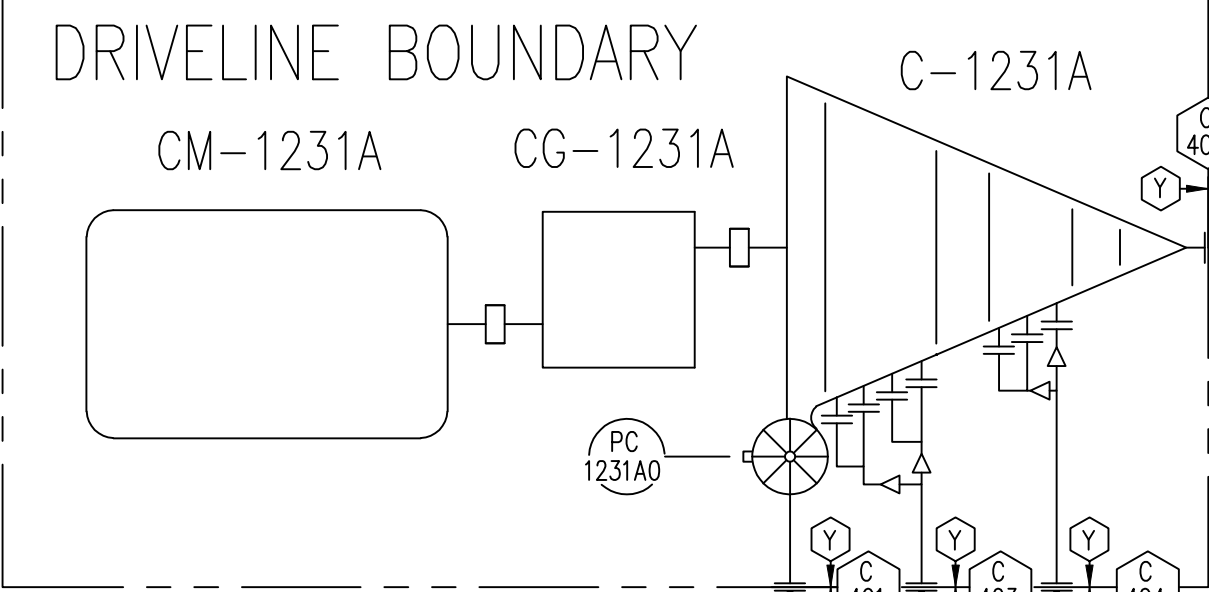
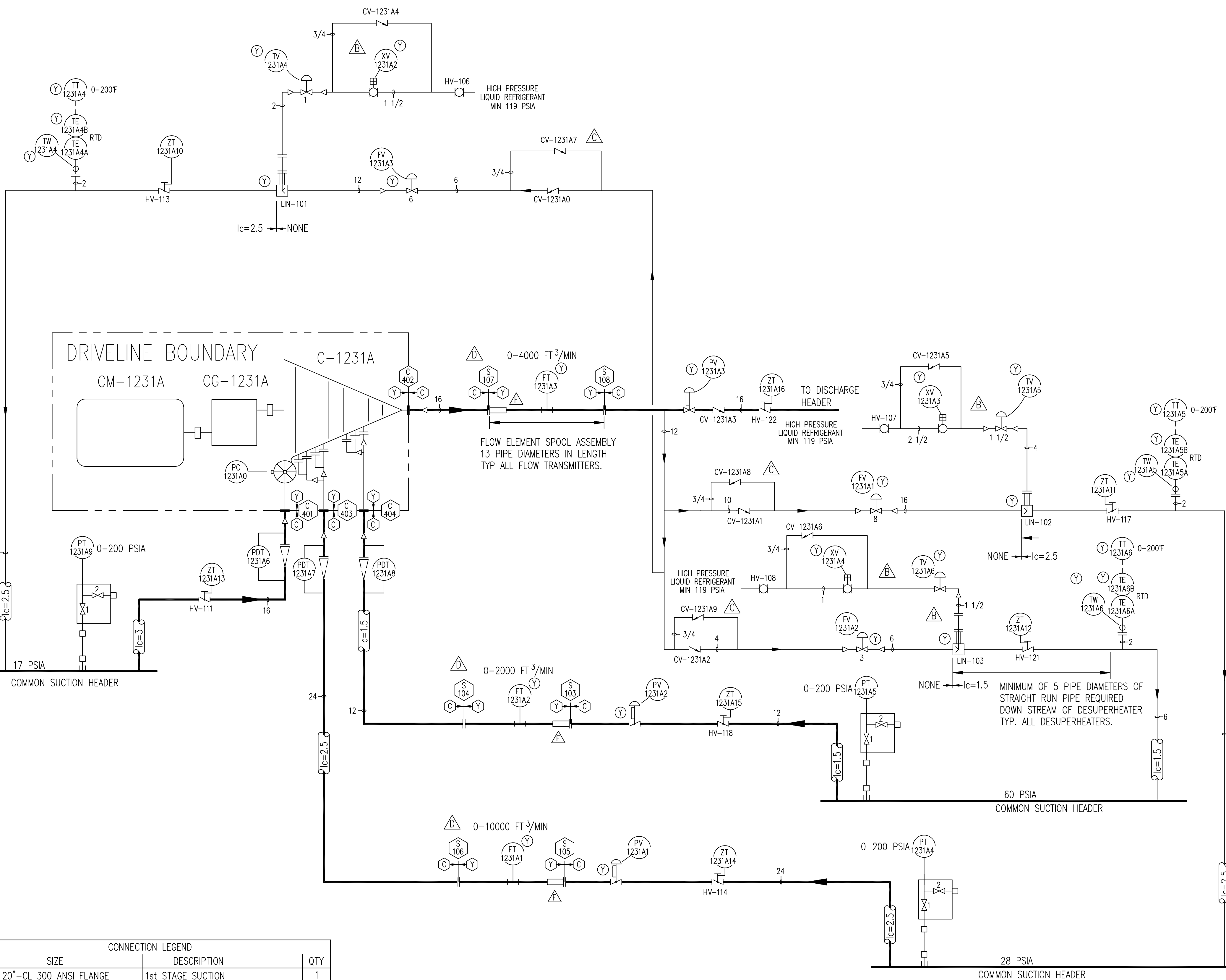


REVISION HISTORY						
ZONE	REV	ECN	DESCRIPTION	DATE	DR	CHK
	A		REVISIONS PER CUSTOMER AND ENGINEERING REVIEW REFER TO REVISION TRIANGLE Δ	3/4/09	JES	TTP
	B		REVISIONS PER CUSTOMER MARK-UPS, TAG NUMBER CHANGES	4/15/09	JES	TTP
	C		REVISION MOVING THE CHECK VALVE BY-PASS LINE. REFER TO REVISION TRIANGLE Δ	5/27/09	JES	TTP
	D		REVISION ADDING TAG NUMBERS FOR SPOOL PIPING. REFER TO REVISION TRIANGLE Δ	6/22/09	JES	TTP
	E		REVISION ADDING S-103 THRU S-108 TO THE CONNECTION LEGEND. Δ	9/25/09	JES	TTP
	F		REVISION PER FAT AND ENGINEERING REVIEW REFER TO REVISION TRIANGLE. Δ	12/22/09	TTP	TTP
	G		AS-BUILT CHANGES FOR TRAIN 1 REFER TO REVISION TRIANGLE Δ	2/22/10	JES	TTP

- NOTES:
- REFERENCE DRAWINGS:
P & I DIAGRAM, (6) REFRIGERATION COMPRESSOR UNITS: 659D2149
GENERAL ARRANGEMENT, COMPR. DRIVELINE: 569D2540
P & I DIAGRAM, COMPRESSOR LUBE OIL 659D2146
GENERAL ARRANGEMENT, COMPRESSOR LUBE OIL MODULE: 569D2560
P & I DIAGRAM, GEAR/MOTOR LUBE OIL: 659D2147
GENERAL ARRANGEMENT, GEAR/MOTOR LUBE OIL MODULE: 569D2561
P & I DIAGRAM, REFRIGERANT OIL COOLERS: 659D2148
PNEUMATIC/ELECTRIC DIAGRAM: 669D0124
LOGIC DIAGRAM: 669D0127
PLC PANEL: 645D1279
COMPRESSOR PROXIMATOR BOX: 648D2383
GEAR PROXIMATOR BOX: 648D2384
P & ID LEGEND: 650D0020
 - AREA CLASSIFICATION:
OUTDOOR, UNDER ROOF, HAZARDOUS, NEMA 4X, CL I, GR C&D, DIV 2
 - ALL MANUAL VALVES ARE NORMALLY OPEN (NO), UNLESS NOTED NORMALLY CLOSED (NC), EXCEPT VENT AND DRAIN VALVES WHICH ARE NORMALLY CLOSED.
 - ALL CUSTOMER CONNECTIONS ARE FURNISHED WITH EITHER PIPE PLUGS OR SEALING DISKS.
 - MAJOR PIPING CUSTOMER CONNECTIONS ARE LISTED IN CHART. AUXILIARY CONNECTIONS (E.G. PNEUMATIC, ELECTRIC, RELIEF VENT, ETC.) ARE NOT LOCATED. REFER TO GA, WIRING DIAGRAM AND JUNCTION BOX DRAWINGS, ETC., FOR ADDITIONAL INFORMATION.
 - INSULATION AND HEAT TRACING "BY OTHERS", (REFER TO LEGEND). CONSULT WITH YORK ENGINEERING FOR SPECIAL LUBE SYSTEM HEAT TRACING AND INSULATION WHEN THE AVERAGE AMBIENT TEMPERATURE AT START-UP WILL BE LESS THAN 40° F.
 - CAUTION: DO NOT CLOSE SERVICE VALVES IN LIQUID PIPING UNLESS THE ISOLATED PIPING IS OPENED IMMEDIATELY FOR SERVICE. EXCESSIVE PRESSURE CAN DEVELOP FROM THERMAL EXPANSION.
 - INTERCONNECTING PIPING IS "BY OTHERS". PIPE HANGERS SHOULD BE USED AS NECESSARY TO AVOID EXCESS STRESS ON PIPING AND COMPONENTS. SUPPORTS ARE SUPPLIED AND INSTALLED "BY OTHERS". (PIPING FLEXIBILITY ANALYSIS FOR EXTERNAL PIPING IS "BY OTHERS".)
 - DESIGN WORKING PRESSURE 200 PSIG.
 - TOTAL AIR SUPPLY REQUIRED: 6400 SCFH, 80-100 PSIG, 4000 SCFH PER DRIVELINE, APPROX. 200 SCFH PER EACH SHIPPED LOOSE PNEUMATIC VALVE AIR QUALITY REQUIRED IN ACCORDANCE WITH ISA S7.0.01.
 - REMOTE EVAPORATOR INSTALLATION MUST INCLUDE CONSIDERATION OF:
A. ADEQUATE LIQUID/GAS SEPARATION SPACE.
B. PREVENTION OF LIQUID MIGRATION AT SHUTDOWN (ANTI-SYPHON LOOPS).
C. PIPING PRESSURE DROPS AND ELIMINATION OF TRAPPED VAPOR LINES.
D. PROCESS ISOLATION "BLOCK AND BYPASS" (FOR START-UP AND SHUTDOWN).
E. OIL RECOVERY.
 - MINIMUM CONDENSING PRESSURE DEFINED AS 119 PSIA.
 - TAG NUMBERS SHOWN ARE FOR TRAIN 1 ITEM 1000, LETTER "A" IN TAG NUMBER SHALL BE SEQUENCED "B" THRU "F" FOR ITEMS 2000 THRU 6000.
 - FOR TRAIN 2 TAG NUMBERS REPLACE "1231A" WITH "1331A" THRU "1331E" FOR ITEMS 8000 THRU 12000.



CONNECTION LEGEND			
CONN	SIZE	DESCRIPTION	QTY
C-401	20"-CL 300 ANSI FLANGE	1st STAGE SUCTION	1
C-402	14"-CL 300 ANSI FLANGE	DISCHARGE	1
C-403	20"-CL 300 ANSI FLANGE	2nd STAGE SUCTION	1
C-404	10"-CL 300 ANSI FLANGE	3rd STAGE SUCTION	1
S-103	12"-CL 150 ANSI FLANGE	FLOW SPOOL INLET	1
S-104	12"-CL 150 ANSI FLANGE	FLOW SPOOL OUTLET	1
S-105	24"-CL 150 ANSI FLANGE	FLOW SPOOL INLET	1
S-106	24"-CL 150 ANSI FLANGE	FLOW SPOOL OUTLET	1
S-107	16"-CL 150 ANSI FLANGE	FLOW SPOOL INLET	1
S-108	16"-CL 150 ANSI FLANGE	FLOW SPOOL OUTLET	1

THIS DRAWING CERTIFIED
FOR SANDRIDGE ENERGY
ORDER NO. 294100
YORK REFRIGERATION
Waynesboro, PA
PER T PALMER DATE 3/4/09

PURCHASER SANDRIDGE ENERGY 1601 N.W. EXPRESSWAY SUITE 1600 OKLAHOMA CITY, OK 73118		NOTICE TO PURCHASER REFER TO CONTRACT FOR MATERIAL TO BE SUPPLIED BY YORK REFRIGERATION. THE AMOUNT OF SUCH MATERIAL IS NOT INCREASED BY ANYTHING SHOWN UPON THIS DRAWING.	
YORK ORD NO 294100		PURCH ORD NO 27607-P-13-012JCI	
UNLESS OTHERWISE SPECIFIED DIMENSIONS ARE IN INCHES DO NOT SCALE		YORK International Refrigeration - Frick Waynesboro, PA 17268	
TITLE P&I DIAGRAM R-134A REFRIGERATION SYSTEM YORK M555BA CENTRIFUGAL COMPRESSOR			
DEC 2PL DR T. PALMER	DEC 2PL CHK H. KUTZ	FRACT 12/15/08	ANGLE 12/23/08
APPD T. PALMER	CODE	SIZE D 23587	DWG NO 659D2149
SCALE		REV G	
SHEET 1 OF 1			