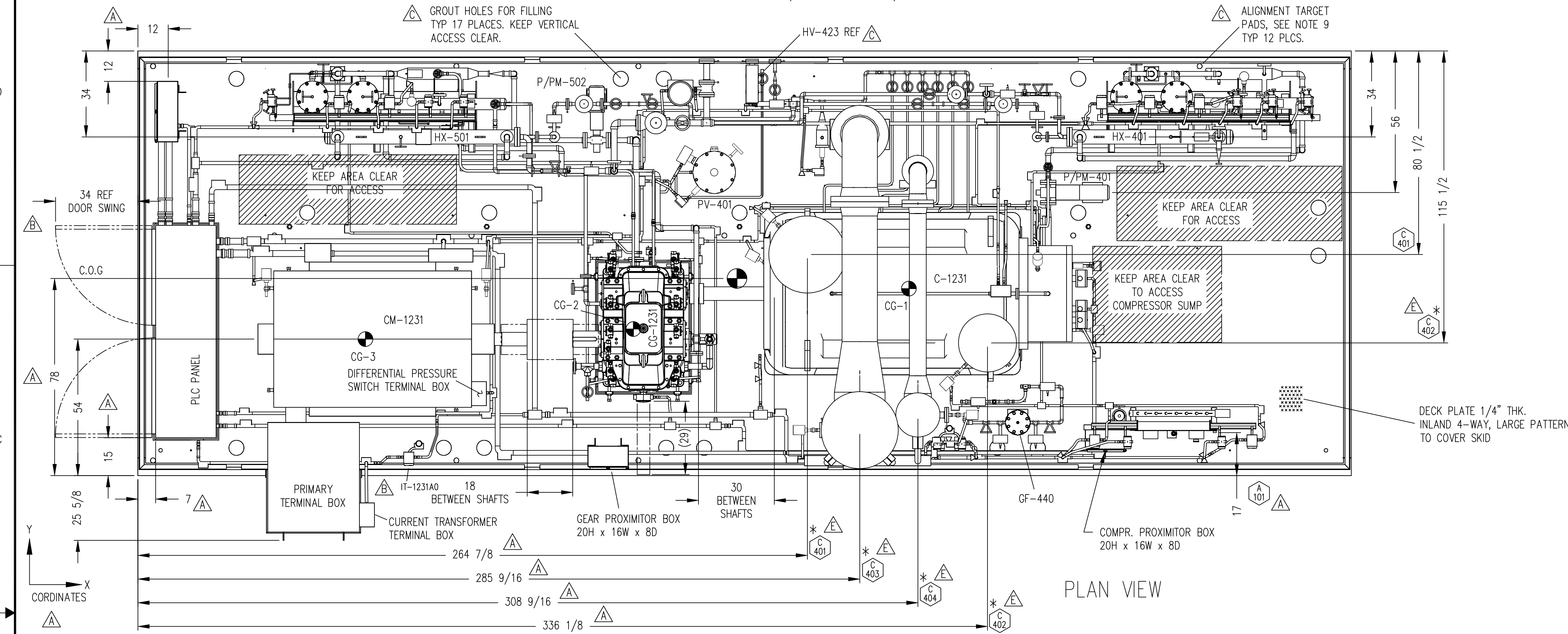


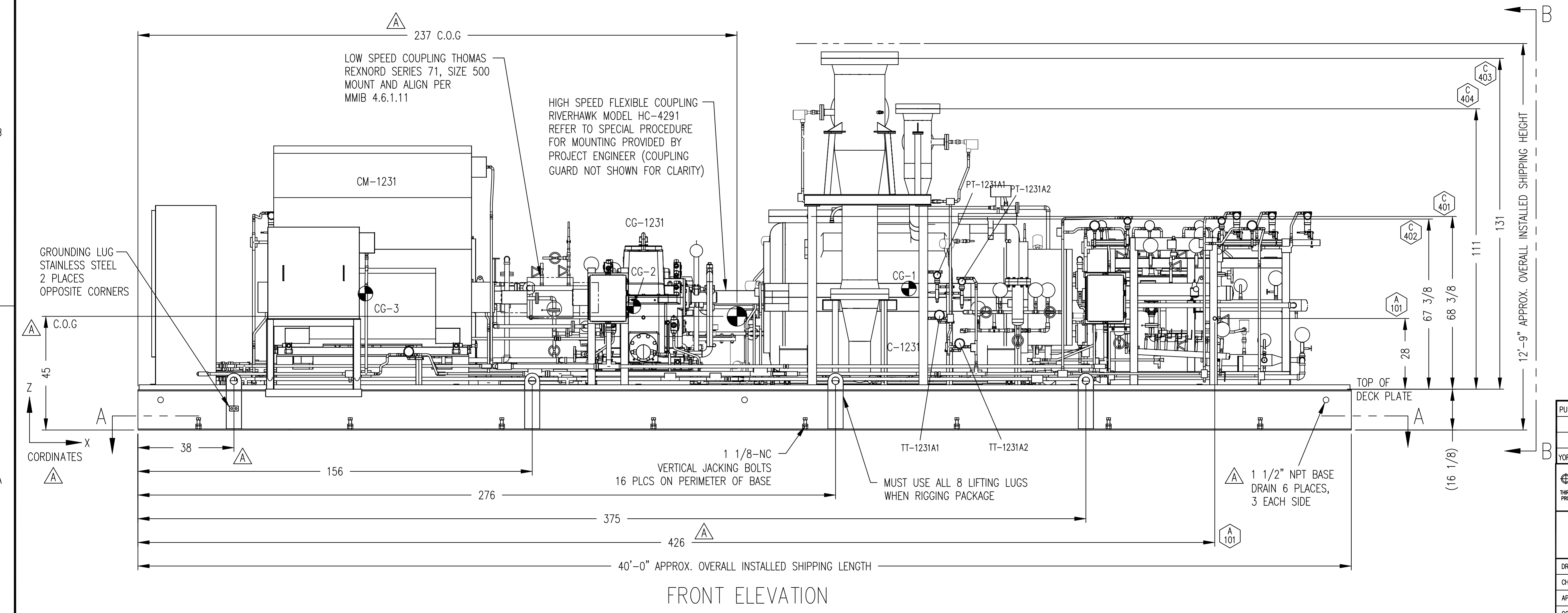
NOTE: OIL COOLERS MUST BE REMOVED TO ACCESS TUBE BUNDLE. (HX-401 AND HX-501)



* SEE NOTE #19 - SHEET 3 OF 4

AS BUILT DIMENSIONS		COORDINATES		
UNIT	CONNECTION/DIMENSION	X	Y	Z
1231A	C-401	265 7/8		
1231A	C-402	336 13/16	116 5/16	
1231A	C-403	309 1/8		
1231A	C-404	286 3/4		
1231A	OVERALL INSTALLED WIDTH	16'-4 3/4		

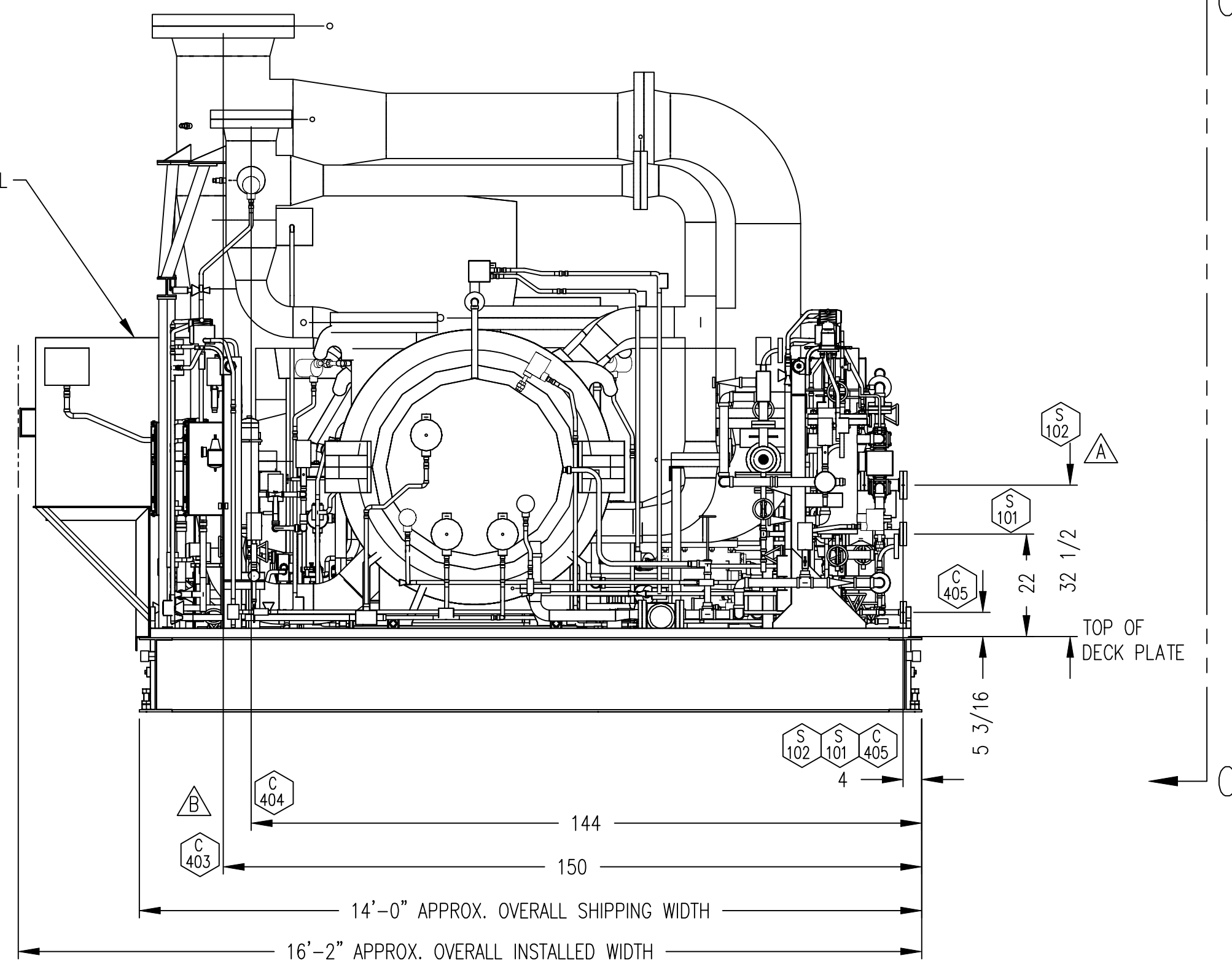
CENTER OF GRAVITY TABLE		COORDINATES		
TARGET	COMPONENT	X	Y	Z
CG-1	COMPRESSOR (C-1231)	305	74	56
CG-2	GEAR (CG-1231)	196	58	49
CG-3	MOTOR (CM-1231)	90	54	54



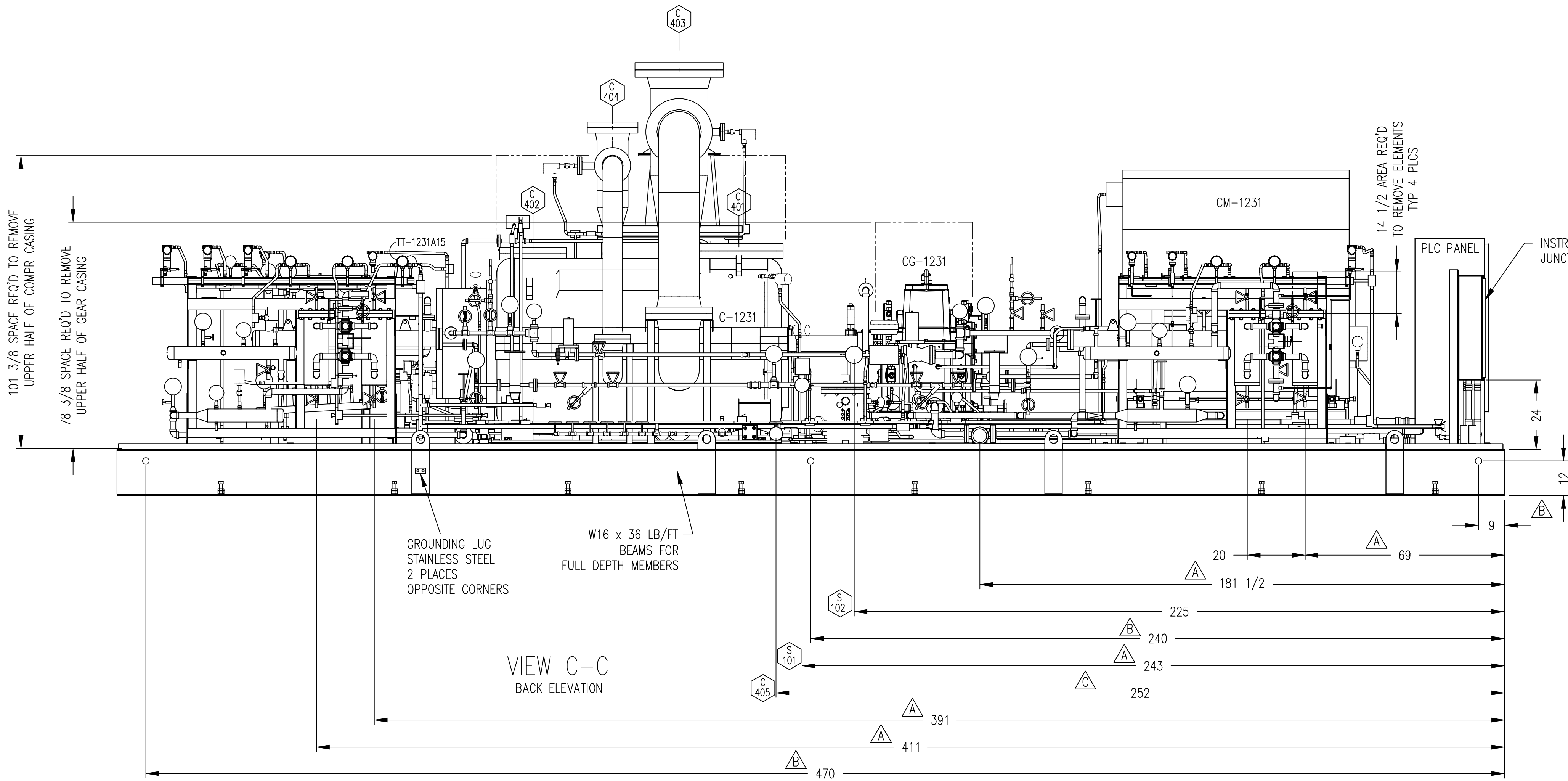
THIS DRAWING CERTIFIED
FOR SANDRIDGE ENERGY
ORDER NO. 294100
YORK REFRIGERATION
Waynesboro, PA
PER T PALMER DATE 3/10/09

PURCHASER SANDRIDGE ENERGY 1601 N.W. EXPRESSWAY SUITE 1600 OKLAHOMA CITY, OK 73118		NOTICE TO PURCHASER REFER TO CONTRACT FOR MATERIAL TO BE SUPPLIED BY YORK REFRIGERATION. THE AMOUNT OF SUCH MATERIAL IS NOT INCREASED BY ANYTHING SHOWN UPON THIS DRAWING.	
YORK ORD NO 294100		PURCH ORD NO 27607-P-13-012JCI	
UNLESS OTHERWISE SPECIFIED DIMENSIONS ARE IN INCHES DO NOT SCALE.		JOHNSON CONTROLS YORK Process Systems Waynesboro, PA 17268	
TITLE GENERAL ARRANGEMENT YORK M555BA CENTRIFUGAL COMPRESSOR			
UNLESS OTHERWISE SPECIFIED TOLERANCES PER QAP 18		SCALE 1:25	
DR J SMITH	1/26/09	SIZE D	CAGE CODE 23587 DWG NO 569D2540
CHK J BLOUNT	1/30/09	REV	E
APPD T PALMER	2/2/09	CODE	
SHEET 1 OF 4			

MAIN MOTOR TERMINAL BOX AND SUPPORTS SHIPPED LOOSE



VIEW B-B
RIGHT ELEVATION



VIEW C-C
BACK ELEVATION

MAJOR EQUIPMENT LIST

- △ C-1231 COMPRESSOR, CENTRIFUGAL; YORK; MODEL NUMBER: M555BA; CAST IRON; 3217 RPM, 3557 SHP, TO COMPRESS R-134A FROM 17.30 PSIA AND -5.5°F SUCTION TO 128.14 PSIA AND 136°F EST; SUCTION LOAD: 18889.2 LB/HR. SECOND STAGE SIDE LOAD: 73875.6 LB/HR; THIRD STAGE SIDE LOAD: 94111.2 LB/HR.; WITH RIVERHAWK COUPLING.
- P-401 OIL PUMP; VIKING; MODEL NUMBER: HL493M; CARBON STEEL; 33 GPM CAPACITY AT 1750 RPM; 1 1/2" CL300 ANSI FF FLANGED PORTS; LESS RELIEF VALVE; 300 PSIG DWP; NEOPRENE MECHANICAL SHAFT SEAL; DRIVER WILL BE A MANUFACTURER STD. 3 HP, 1750 RPM, TEFC, 460-3-60, 1.15 SF, 182 TC FRAME, SUITABLE FOR USE IN A CLASS I, DIVISION II OUTDOOR LOCATION.
- PM-401
- △ PV-401 RESERVOIR TANK, 12 3/4 OD x 16 HIGH, TO OPERATE AT ATMOSPHERIC PRESSURE CAPACITY APPROX. 8 GALLONS, BY JCI/YORK.
- OF-401 OIL FILTER; SS, WITH ONE 5 MICRON FILTER ELEMENT; 200 PSIG DWP; -20°F/250°F DWT; WITH 1 1/2" INLET & OUTLET CONNECTIONS; ASME B31.3; BY JCI/YORK.
- OF-402
- GF-440 GAS FILTER, A-4 SEAL; WITH ELEMENT S397-8SS INSTALLED; 10 MICRON @ 98% EFF WOVEN GLASS; 400 PSIG DWP @ 300 F; 1/2" FPT VENT & DRAIN; DESIGNED & CONSTR TO ASME SECT VII, DIV 1
- △ CM-1231 MOTOR, ELECTRIC, INDUCTION; TECO WESTINGHOUSE, 4000 HP, 1800 RPM SYNC SPEED, 4000V/3/60HZ, WPI ENCLOSURE, 5014 FRAME, 1.0 S.F., AMBIENT TEMP 104°F [40°C], 176°F [80°C] TEMP RISE @ 1.0 SF BY RTD, SELF LUBE SPLIT SLEEVE BEARING, 3380 FT MAX ELEVATION, 80% MIN VOLTAGE STARTING, 4300 LB FT² LOAD INERTIA, CLASS F INSULATION, SS HARDWARE, MULTIPLE 240V SPACE HEATER TO OPERATE @ 120V SINGLE PHASE, 85 DBA @ 3FT, CLASS 1 DIV2 GROUP C&D T3, CURRENT TRANSFORMER, NEMA 4 MAIN & AUX. BOXES, BENTLY NEVADA 3300 XL 4 VIBRATION PROBES 4 VIBRATION PROXIMITORS + HOUSING, VERTICAL JACKING BOLTS, 6 STATOR RTD'S, 2 BEARING RTD'S, THREE 50:5 WINDOW TYPE DIFFERENTIAL CURRENT TRANSFORMERS.
- △ CG-1231 GEAR, SPEED INCREASER; LUFKIN; MODEL NUMBER: N1800C; CAST IRON; PER API 613 STANDARDS; WITH 1.4 API SF MIN; TO TRANSMIT 4000 HP FROM MOTOR AT 1772 RPM TO 3217 RPM COMPRESSOR; WITH SPARKPROOF L.S. COUPLING GUARD AND SHIM SET; HYDRAULICALLY RELEASING (KEYLESS) TAPERED SHAFT EXTENSION WITH COUPLING NUT, FOR 3" RIVERHAWK COUPLING, TAPERED 1/2"/FT; CYLINDRICAL L.S. SHAFT EXTENSION WITH 6.5" DIA AND SINGLE KEYWAY; SS TAGGING ON ALL INSTRUMENTATION AND LUBE OIL CONNECTIONS; CS BODY SHAFT DRIVEN OIL PUMP; IMMERSION HEATER WITH BUILT IN THERMOSTAT; PROVISIONS FOR OIL SUMP TEMP SENSOR AND LOW OIL LEVEL SWITCH; VERTICAL LIQUID LEVEL GAUGE; OIL SUMP CLEAN OUT; 8 BENTLY NEVADA 3300XL VIBRATION PROBES, 2 EACH JOURNAL BEARING; 1 KEYPHASOR PROBE ON L.S. SHAFT, 1 CASE MOUNTED ACCELEROMETER ON L.S. SHAFT EXTENSION, BEARING HOUSING, HORIZONTAL LOCATION BELOW PARTING LINE; 4 MINCO 100 OHM DUPLEX EMBEDDED RTD'S, 1 EACH JOURNAL; 1 PROBE TYPE DUPLEX RTD IN OIL SUMP WITH SS THERMOWELL.
- P-502 OIL PUMP; VIKING; MODEL NUMBER: HJ493M; CARBON STEEL; 20 GPM CAPACITY AT 1750 RPM; 1 1/2" CL300 ANSI FF FLANGED PORTS; LESS RELIEF VALVE; 300 PSIG DWP; NEOPRENE MECHANICAL SHAFT SEAL; DRIVER WILL BE A MANUFACTURER STD. 1 1/2 HP, 1750 RPM, TEFC, 460-3-60, 1.15 SF, 145 TC FRAME, SUITABLE FOR USE IN A CLASS I, DIVISION II OUTDOOR LOCATION.
- PM-502
- OF-501 OIL FILTER; SS, WITH ONE 5 MICRON FILTER ELEMENT; 200 PSIG DWP; -20°F / 250°F DWT; WITH 1 1/2" INLET & OUTLET CONNECTIONS; ASME B31.3; BY JCI/YORK
- OF-502
- HX-401 OIL COOLER; API BASCO; MODEL NUMBER: 05054 BEU; SS; 5.563" OD x 54" NTL; TYPE BEU WITH (34) PLAIN STAINLESS STEEL "U" TUBES; 3/8" OD x 24 BWG; 2 PASSES TUBESIDE; 200 PSIG SHELLSIDE / 200 PSIG TUBESIDE; ASME CODE AND TEMA CLASS 'C'; DUTY: 44940 BTUH COOLING 14.32 US GPM YORK K OIL SHELLSIDE; USING 675.6 LB/HR R-134A EVAPORATING TUBESIDE AT 51°F
- HX-501 OIL COOLER; API BASCO; MODEL NUMBER: 05066 BEU; SS; 5.563" OD x 66" NTL; TYPE BEU WITH (34) PLAIN STAINLESS STEEL "U" TUBES; 3/8" OD x 24 BWG; 2 PASSES TUBESIDE; 200 PSIG SHELLSIDE / 200 PSIG TUBESIDE; ASME CODE AND TEMA CLASS 'C'; DUTY: 101800 BTUH COOLING 13 US GPM LIGHT TURBINE OIL SHELLSIDE; USING 1530.6 LB/HR R-134A EVAPORATING TUBESIDE AT 51°F

THIS DRAWING CERTIFIED
FOR SANDRIDGE ENERGY
ORDER NO. 294100
YORK REFRIGERATION
Waynesboro, PA
PER T PALMER DATE 3/10/09

PURCHASER SANDRIDGE ENERGY 1601 N.W. EXPRESSWAY SUITE 1600 OKLAHOMA CITY, OK 73118		NOTICE TO PURCHASER REFER TO CONTRACT FOR MATERIAL TO BE SUPPLIED BY YORK REFRIGERATION. THE AMOUNT OF SUCH MATERIAL IS NOT INCREASED BY ANYTHING SHOWN UPON THIS DRAWING.	
YORK ORD NO 294100		PURCH ORD NO 27607-P-13-012JCI	
UNLESS OTHERWISE SPECIFIED DIMENSIONS ARE IN INCHES DO NOT SCALE		UNLESS OTHERWISE SPECIFIED TOLERANCES PER QAP 18	
DEC ZPL ±		DEC ZPL ±	
DEC FRACT ±		DEC ANGLE ±	
DR J SMITH 1/26/09		SIZE D	
CHK J BLOUNT 1/30/09		CAGE CODE 23587	
APPD T PALMER 2/1/09		DWG NO 569D2540	
CODE		SCALE 1:25	
		SHEET 2 OF 4	

NOTES:

- REFERENCE DRAWINGS:
 P & I DIAGRAM, (6) REFRIGERATION COMPRESSOR UNITS: 659D2149
 GENERAL ARRANGEMENT, COMPRESSOR DRIVELINE: 569D2540
 P & I DIAGRAM, COMPRESSOR LUBE OIL: 659D2146
 GENERAL ARRANGEMENT, COMPRESSOR LUBE OIL MODULE: 569D2560
 P & I DIAGRAM, GEAR/MOTOR LUBE OIL: 659D2147
 GENERAL ARRANGEMENT, GEAR/MOTOR LUBE OIL MODULE: 569D2561
 P & I DIAGRAM, REFRIGERANT OIL COOLERS: 659D2148
 PNEUMATIC/ELECTRIC DIAGRAM: 669D0124
 LOGIC DIAGRAM: 669D0127
 PLC PANEL: 645D1279
 COMPRESSOR PROXIMATOR BOX: 648D2383
 GEAR PROXIMATOR BOX: 648D2384
 P & ID LEGEND: 650D0020
- AREA CLASSIFICATION:
 OUTDOOR UNDER ROOF, HAZARDOUS, NEMA 4X, CL 1, GR C&D, DIV II
- MAJOR PIPING CUSTOMER CONNECTIONS ARE LISTED IN CHART.
 AUXILIARY CONNECTIONS (E.G. PNEUMATIC, ELECTRIC, RELIEF VENT, ETC.) ARE NOT LOCATED. REFER TO REFERENCE DRAWING, ETC., FOR ADDITIONAL INFORMATION.
- ALL LI'S ARE TO BE LOCATED WITH VISIBLE GLASS STARTING AT BOTTOM OF VESSEL, UNLESS OTHERWISE DETAILED.
- SPECIAL INSTALLATION INSTRUCTIONS FOR ERECTING ENGINEER APPLY. REFER TO DRAWING 560D0124.
- CUSTOMER CONNECTION DIMENSION TOLERANCE: ±1/2.
- APPROXIMATE CENTER OF GRAVITY.
- (PSV) ARE APPROXIMATE AND FOR REFERENCE ONLY. EXACT LOCATIONS ARE NOT AVAILABLE.
- SHIM THE DRIVE BASE LEVEL USING THE MACHINED TARGET PADS IN ACCORDANCE WITH THE FABRICATION NOTES REFERENCED BELOW.
- NOTES FOR FABRICATION SHOP:
 FABRICATE AND TEST IN ACCORDANCE WITH FABRICATION NOTES DRAWING 560D0132 AS MODIFIED BELOW.

APPLICABLE PIPING CODE	ANSI B31.3
RADIOGRAPHY	5%

DESCRIPTION	HIGH/LOW SIDE	COMPR. LUBE	GEAR. LUBE
DESIGN WORKING PRESSURE	200 PSI	200 PSI	200 PSI
PROOF TEST PRESSURE	220 PSI	220 PSI	220 PSI
LEAK TEST PRESSURE	200 PSI	200 PSI	200 PSI

PAINT AS FOLLOWS:	COLOR	MIN. # COATS	THK/COAT
AMERLOCK 400	GR 2	1	3 MILS NOM
AMERCOAT 450HS	GR 2	1	2 MILS NOM

COMBINED MINIMUM DRY FILM THICKNESS = 5 MILS

CAUTION: PACKAGE MUST BE GROUNDED DURING PAINT PROCEDURE.

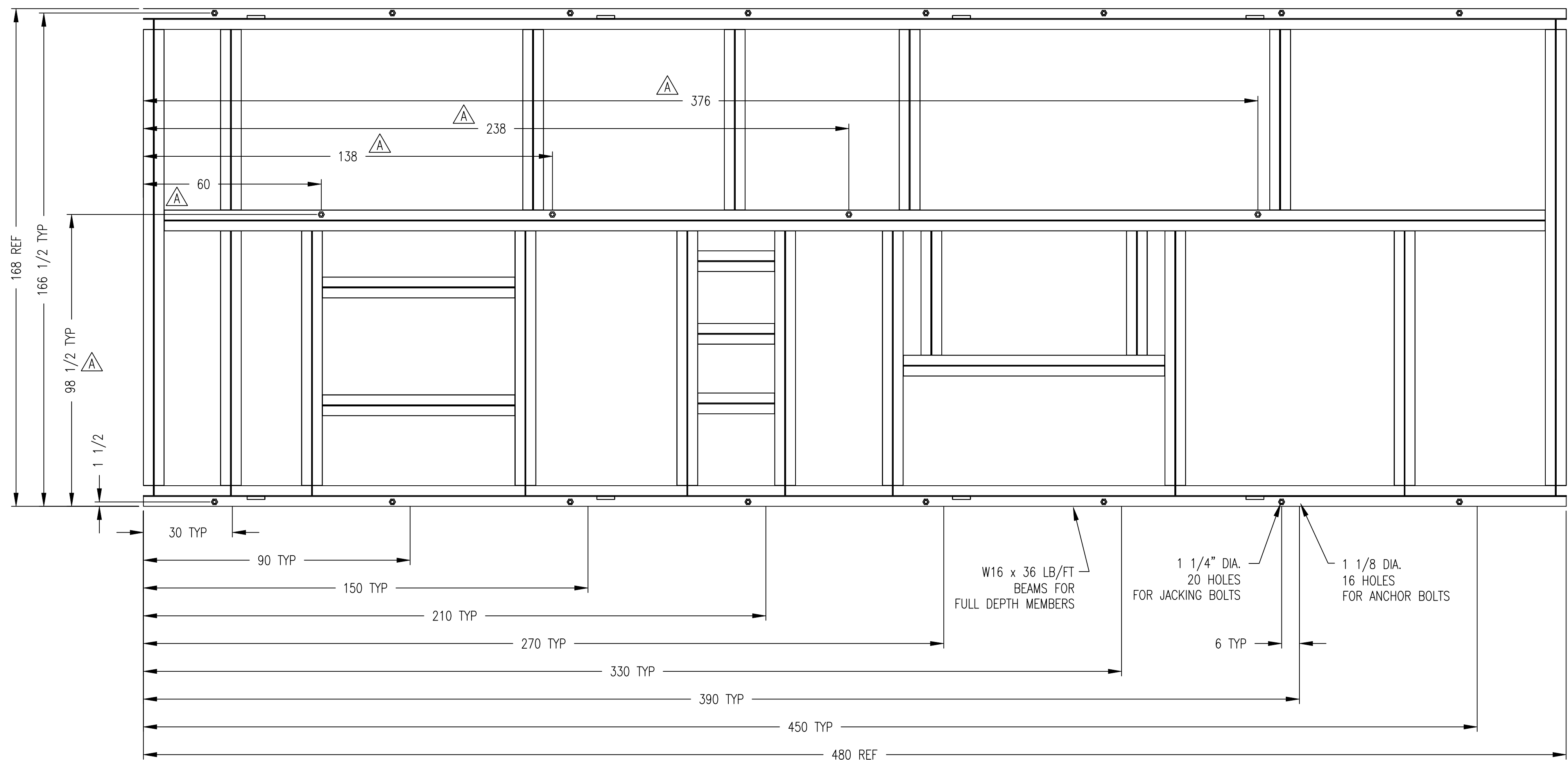
SOFT FOOT TEST REQ'D:	.001" ON SHAFT
-----------------------	----------------

OIL FLUSH	YES, MMIB 4.11.9.19 TEST 2
OIL RUN	N/A

- SPECIAL REQUIREMENTS:
- TAG NUMBERS ARE FOR TRAIN 1 ITEM 1000, LETTER "A" IN TAG NUMBER SHALL BE SEQUENCED "B" THRU "F" FOR ITEMS 2000 THRU 6000.
 - DUE TO SPACE CONSTRAINTS IMPOSED ON THIS PROJECT, EXTRAORDINARY MEASURES MAY BE NECESSARY FOR INSULATION AND/OR SERVICE ACCESS.
 - ALL LUBE OIL PIPING/TUBING TO BE STAINLESS STEEL.
 ALL LUBE OIL PIPING TO BE STAINLESS STEEL, A312TP 304 ERW PIPE.
 - ALL PIPE, PIPE FITTING, TUBING AND TUBE FITTINGS TO HAVE MATERIAL OF ORIGIN RESTRICTIONS PER AES 1100.04
 - NO FCAW WILL BE PERFORMED ON CARBON STEEL TO CARBON STEEL PIPING. GTAW REQUIRED ON ROOT PASSES FOR ALL PRESSURE CONTAINING PIPE WELDS.
 - MOTOR MUST BE REMOVED FOR ROTOR REMOVAL.
 - PIPE BENDING IS NOT PERMITTED, ELBOWS MUST BE UTILIZED IN PIPE RUNS AS NECESSARY.
 - FOR TRAIN 2 TAG NUMBERS REPLACE "1231A" WITH "1331A" THRU "1331E" FOR ITEMS 8000 THRU 12000.
 - * REFER TO AS BUILT DIMENSION TABLE.
 - LOCATE ALL FLANGE MARKINGS TO PERIMETER OF SKID FOR VISUAL INSPECTION.

CONN	SIZE	DESCRIPTION	QTY
C-401	20"-CL 300 ANSI FLANGE	1st STAGE SUCTION	1
C-402	14"-CL 300 ANSI FLANGE	DISCHARGE	1
C-403	20"-CL 300 ANSI FLANGE	2nd STAGE SUCTION	1
C-404	10"-CL 300 ANSI FLANGE	3rd STAGE SUCTION	1
C-405	3/4"-CL 300 ANSI FLANGE	STAGE DRAINS	1
S-101	1 1/2"-CL 150 ANSI FLANGE	OIL COOLER REFRIGERANT INLET	1
S-102	2"-CL 150 ANSI FLANGE	OIL COOLER REFRIGERANT OUTLET	1
A-101	3/4" FPT-CL3000 COUPLING	AIR SUPPLY (STAINLESS STEEL)	1

COMPONENT	APPROXIMATE WEIGHTS (SKID)	
	SHIPPING WEIGHT	OPERATING WEIGHT
COMPRESSOR (C-1231) LESS ROTOR	36,877	37,277
COMPRESSOR ROTOR	1,323	1,323
GEAR (CG-1231)	6,180	6,380
MOTOR (CM-1231) LESS ROTOR	12,210	12,210
MOTOR ROTOR	4,730	4,730
COMPRESSOR LUBE OIL MODULE	1,895	2,245
COMPRESSOR OIL COOLER (HX-401)	250	300
GEAR LUBE OIL MODULE	1,355	1,625
GEAR OIL COOLER (HX-501)	300	350
CONTROL PANEL	980	980
STRUCTURAL BASE	24,900	24,900
MISC PIPING & COMPONENTS	10,500	11,000
TOTAL COMPRESSOR DRIVELINE PACKAGE	101,500	103,320
TOTAL DRIVELINE WITH GROUT		213,570

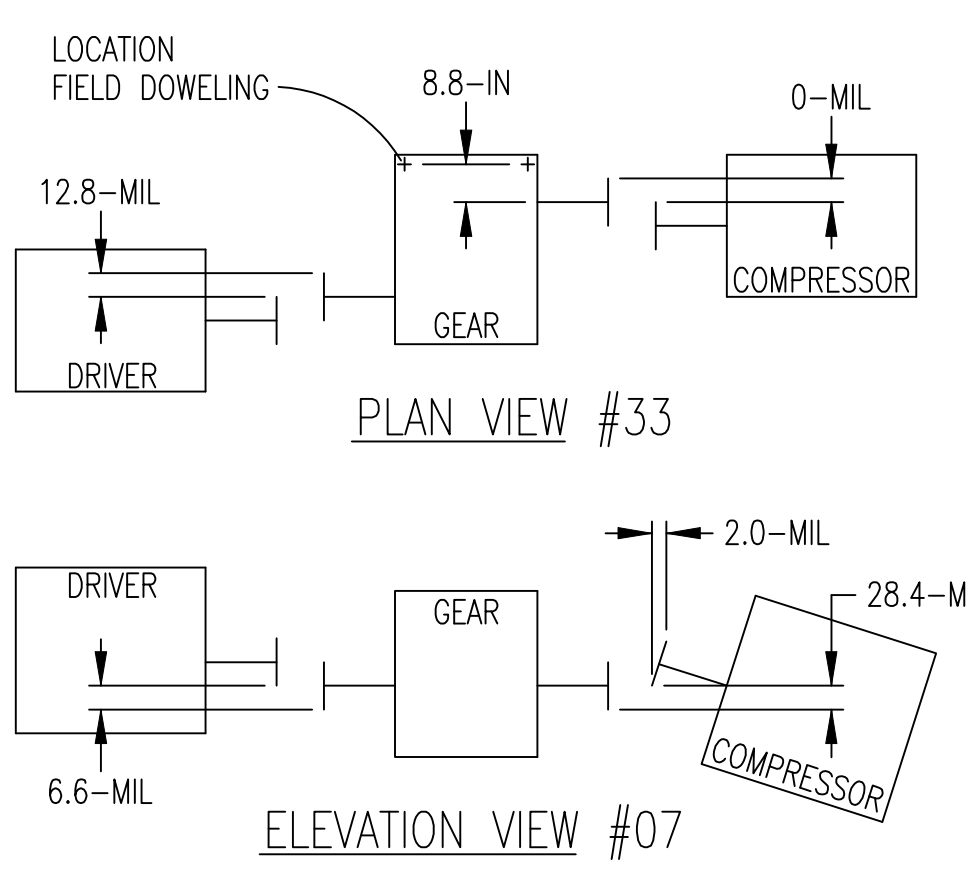
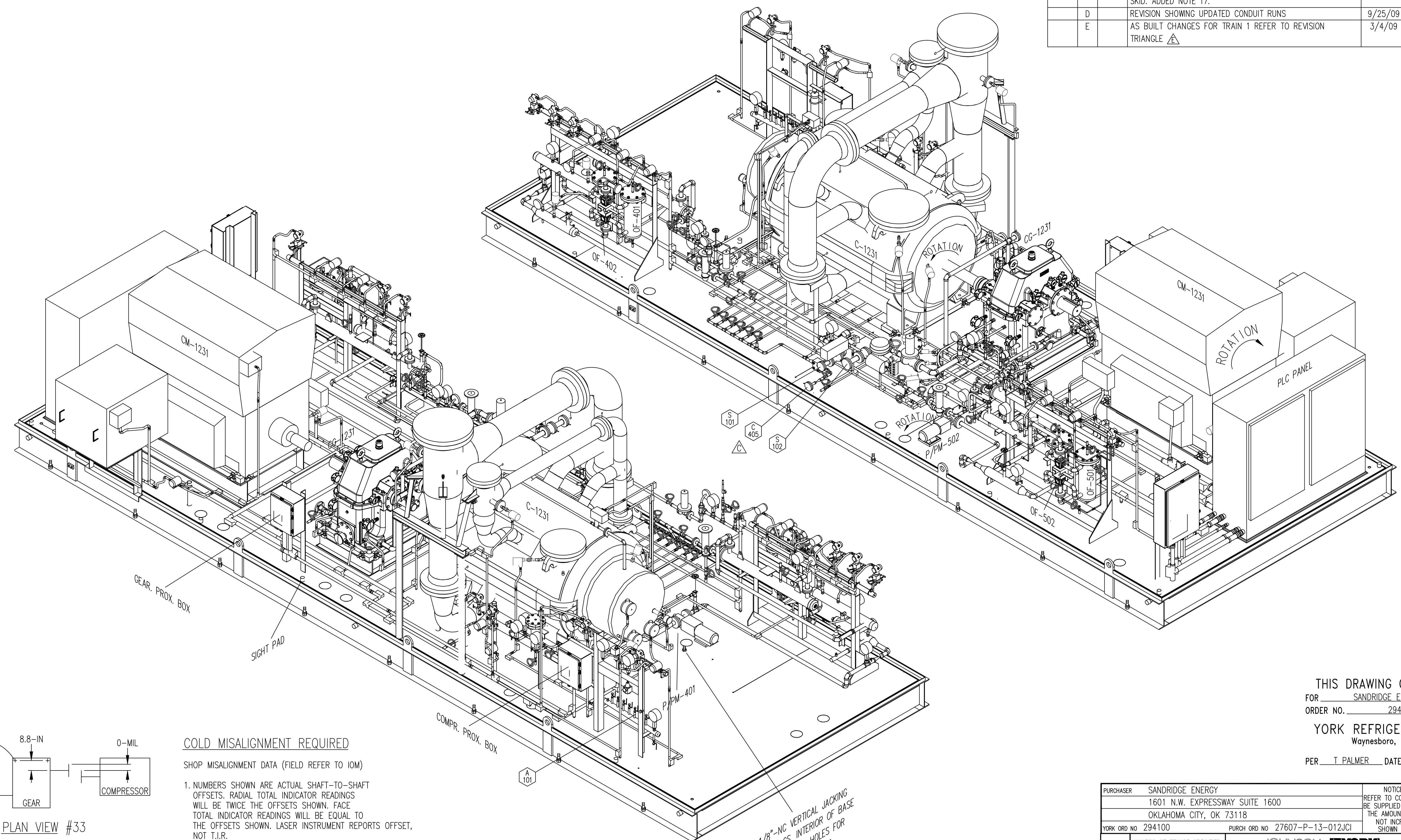


VIEW A-A
 SHOWING ANCHOR BOLT HOLES
 AND JACKING BOLT HOLES

THIS DRAWING CERTIFIED
 FOR SANDRIDGE ENERGY
 ORDER NO. 294100
 YORK REFRIGERATION
 Waynesboro, PA
 PER T PALMER DATE 3/10/09

PURCHASER SANDRIDGE ENERGY 1601 N.W. EXPRESSWAY SUITE 1600 OKLAHOMA CITY, OK 73118		NOTICE TO PURCHASER REFER TO CONTRACT FOR MATERIAL TO BE SUPPLIED BY YORK REFRIGERATION. THE AMOUNT OF SUCH MATERIAL IS NOT INCREASED BY ANYTHING SHOWN UPON THIS DRAWING.	
YORK ORD NO 294100		PURCH ORD NO 27607-P-13-012JCI	
UNLESS OTHERWISE SPECIFIED DIMENSIONS ARE IN INCHES DO NOT SCALE.			
TITLE GENERAL ARRANGEMENT YORK M555BA CENTRIFUGAL COMPRESSOR			
DR J SMITH	DEC 2PL	DEC 3PL	FRACT
CHK J BLOUNT	DEC 2PL	DEC 3PL	FRACT
APPD T PALMER	DEC 2PL	DEC 3PL	FRACT
SCALE 1:25	SIZE D	CAGE CODE 23587	DWG NO 569D2540
CODE	SCALE 1:25	SHEET 3	OF 4

REVISION HISTORY							
ZONE	REV	ECN	DESCRIPTION	DATE	DR	CHK	APPD
	A		REVISIONS PER CUSTOMER AND ENGINEERING REVIEW REFER TO REVISION TRIANGLE \triangle	3/4/09	JES	TTP	TTP
	B		REVISIONS PER CUSTOMER REQUEST.	5/5/09	JES	TTP	TTP
	C		REVISION PER MODEL REVIEW, SHOWED BRACING FOR SIDE LOAD CONNECTIONS AND MOVED STAGE DRAINS TOWARD EDGE OF SKID. ADDED NOTE 17.	7/14/09	JES	TTP	TTP
	D		REVISION SHOWING UPDATED CONDUIT RUNS	9/25/09	JES	TTP	TTP
	E		AS BUILT CHANGES FOR TRAIN 1 REFER TO REVISION TRIANGLE \triangle	3/4/09	JES	TTP	TTP



COLD MISALIGNMENT REQUIRED
 SHOP MISALIGNMENT DATA (FIELD REFER TO IOM)

- NUMBERS SHOWN ARE ACTUAL SHAFT-TO-SHAFT OFFSETS. RADIAL TOTAL INDICATOR READINGS WILL BE TWICE THE OFFSETS SHOWN. FACE TOTAL INDICATOR READINGS WILL BE EQUAL TO THE OFFSETS SHOWN. LASER INSTRUMENT REPORTS OFFSET, NOT T.I.R.
- ROTATE SHAFTS TOGETHER TO ELIMINATE EFFECT OF RUN-OUT. TOLERANCES: RADIAL OFFSET \pm 2.0 MIL. ANGULAR OFFSET \pm 0.1 MIL/IN.

1 1/8" NC VERTICAL JACKING BOLTS 4 PLCS. INTERIOR OF BASE WITH 6" ACCESS HOLES FOR SHIMMING THE BASE

THIS DRAWING CERTIFIED
 FOR SANDRIDGE ENERGY
 ORDER NO. 294100
 YORK REFRIGERATION
 Waynesboro, PA
 PER T PALMER DATE 3/10/09

PURCHASER SANDRIDGE ENERGY 1601 N.W. EXPRESSWAY SUITE 1600 OKLAHOMA CITY, OK 73118		NOTICE TO PURCHASER REFER TO CONTRACT FOR MATERIAL TO BE SUPPLIED BY YORK REFRIGERATION. THE AMOUNT OF SUCH MATERIAL IS NOT INCREASED BY ANYTHING SHOWN UPON THIS DRAWING.	
YORK ORD NO 294100		PURCH ORD NO 27607-P-13-012JCI	
UNLESS OTHERWISE SPECIFIED DIMENSIONS ARE IN INCHES DO NOT SCALE		JOHNSON CONTROLS YORK Process Systems Waynesboro, PA 17268	
TITLE GENERAL ARRANGEMENT YORK M555BA CENTRIFUGAL COMPRESSOR			
UNLESS OTHERWISE SPECIFIED TOLERANCES PER QAP 18		SCALE 1:25	
DEC 2PL ±	DEC 3PL ±	FRACT ±	ANGLE ±
DR J SMITH	1/26/09	SIZE D	CAGE CODE 23587
CHK J BLOUNT	1/30/09	DWG NO 569D2540	REV E
APPD T PALMER	2/1/09	SHEET 4 OF 4	