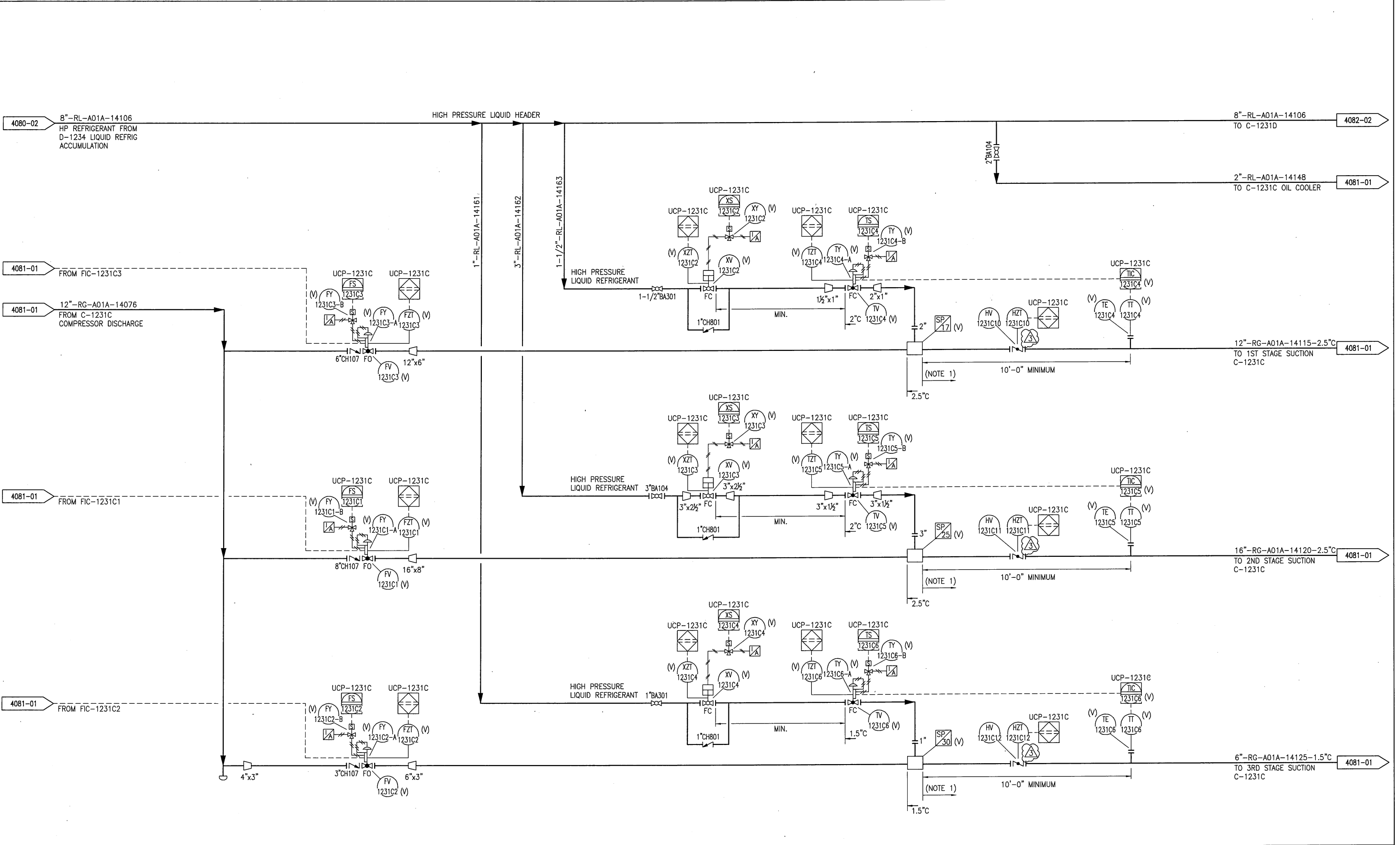


This document is the sole and exclusive property of Mustang Engineering, L.P. and its affiliates. It is to be used only for the project and site specifically identified herein. No part, nor the material described therein, (i) use the document for any purpose other than as specifically permitted in writing by Mustang Engineering, L.P. and its affiliates, or (ii) disclose or otherwise disseminate or allow any such disclosure or dissemination of this document or its contents to others, except as specifically permitted in writing by Mustang Engineering, L.P. and its affiliates.



NOTES:
 1. MINIMUM 5 PIPE DIAMETERS STRAIGHT-RUN DOWNSTREAM REQUIRED.

3	31MAR10	AG	RE-ISSUED FOR CONSTRUCTION	DR	PW	1/4	PROJECT NO:	1370601		
2	05FEB10	AG	RE-ISSUED FOR CONSTRUCTION	DR	PW		DESIGNED BY:			
1	17JUL09	JL	RE-ISSUED FOR CONSTRUCTION	DR	RM	PW	DRAWN BY:	A. RODAS 30JAN09		
0	11MAY09	AG	ISSUED FOR CONSTRUCTION	DR	RM	PW	CHECKED BY:	D. RICHERT		
B	20MAR09	AG	ISSUED FOR HAZOP #3	DR	HR	PW	APPROVED BY:			
A	30JAN09	AR	ISSUED FOR HAZOP #2	DR	HR	PW	SCALE:	NONE		
REV	DATE	BY	DESCRIPTION	CHK	ENGR	APPR	CLIENT	DATE	DRAWING NO:	13706-PID-P-4081-02
								REV:	3	

BASED ON DWG-ENG-1104 REV 2