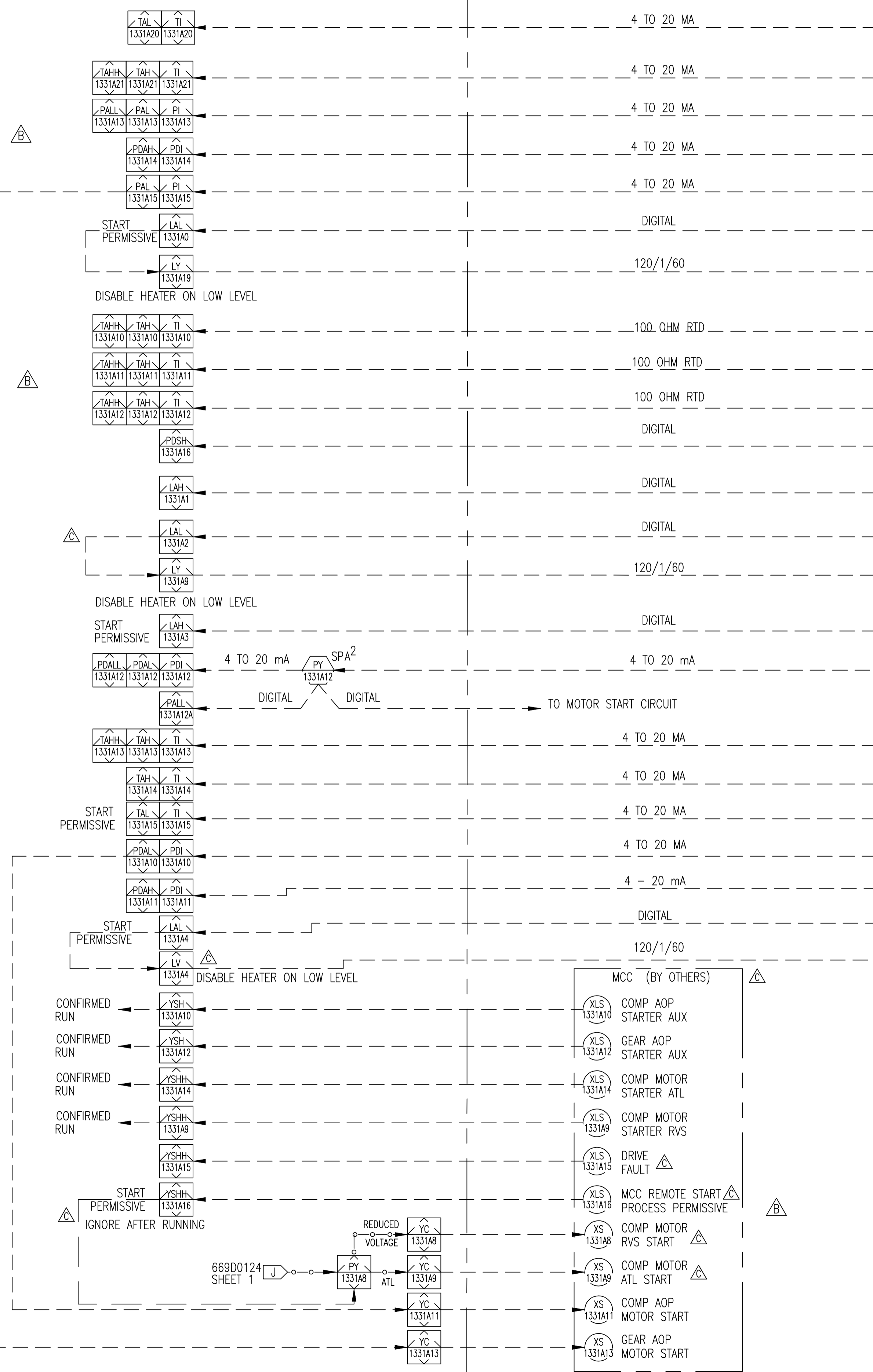
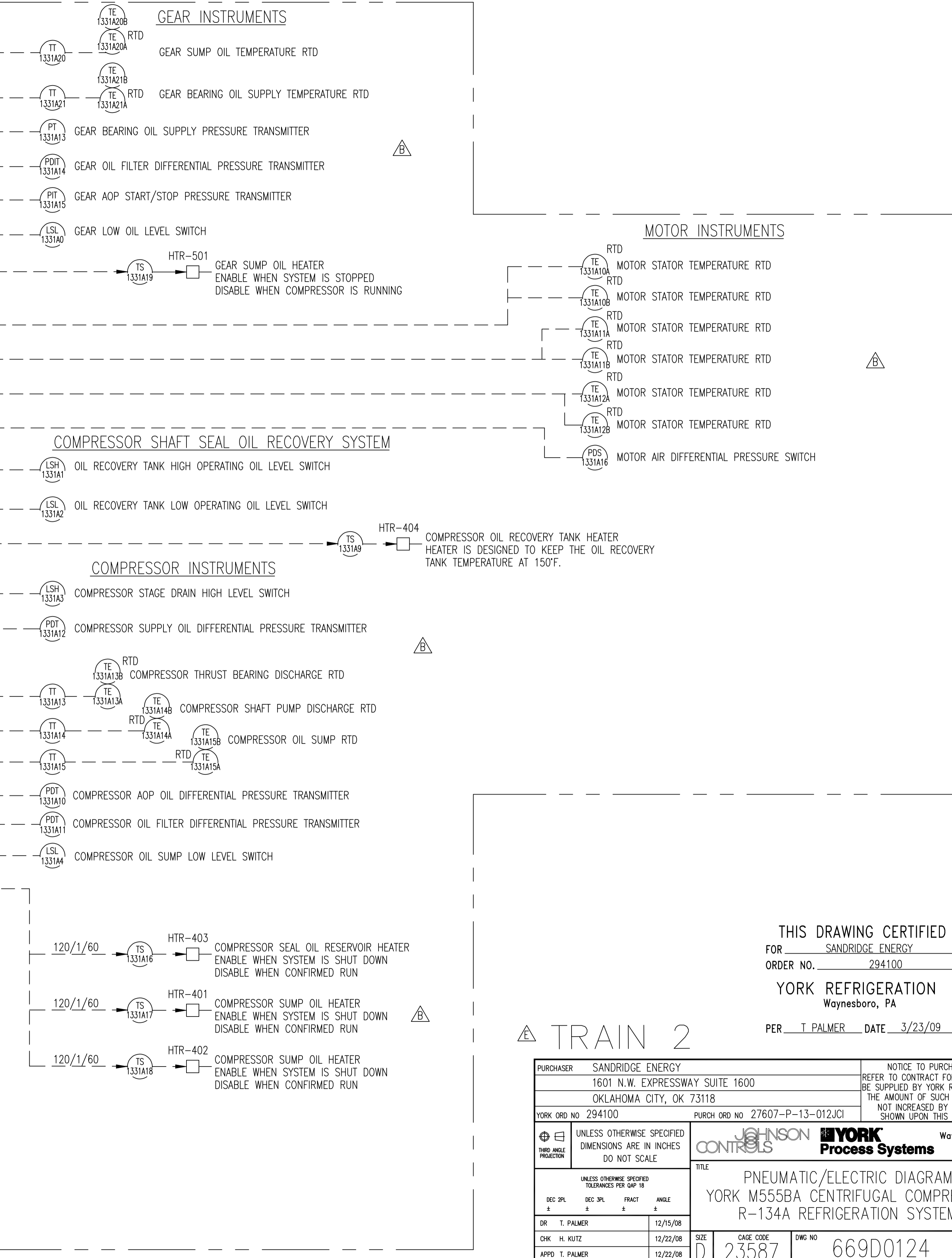




LIMITS OF PLC PANEL  
MOUNTED ON DRIVELINE UNIT



LIMITS OF YORK DRIVELINE SKID



THIS DRAWING CERTIFIED FOR SANDRIDGE ENERGY ORDER NO. 294100 YORK REFRIGERATION Waynesboro, PA PER T PALMER DATE 3/23/09

|   |          |   |                 |
|---|----------|---|-----------------|
| PURCHASER SANDRIDGE ENERGY<br>1601 N.W. EXPRESSWAY SUITE 1600<br>OKLAHOMA CITY, OK 73118              |          | NOTICE TO PURCHASER<br>REFER TO CONTRACT FOR MATERIAL TO BE SUPPLIED BY YORK REFRIGERATION. THE AMOUNT OF SUCH MATERIAL IS NOT INCREASED BY ANYTHING SHOWN UPON THIS DRAWING. |                 |
| YORK ORD NO 294100  |          | PURCH ORD NO 27607-P-13-012JCI  |                 |
| UNLESS OTHERWISE SPECIFIED DIMENSIONS ARE IN INCHES DO NOT SCALE                                      |          | YORK CONTROLS YORK Process Systems Waynesboro, PA 17268   |                 |
| TITLE<br>PNEUMATIC/ELECTRIC DIAGRAM<br>YORK M555BA CENTRIFUGAL COMPRESSOR R-134A REFRIGERATION SYSTEM |          |   |                 |
| DR T. PALMER  | 12/15/08 | SIZE D  | CAGE CODE 23587 |
| CHK H. KUTZ   | 12/22/08 | DWG NO 669D0124   | REV E           |
| APPD T. PALMER  | 12/22/08 | SCALE NONE  | SHEET 2 OF 5    |

LIMITS OF PLC PANEL  
MOUNTED ON DRIVELINE SKID

LIMITS OF YORK DRIVELINE SKID

BENTLY NEVADA 3500 MONITOR

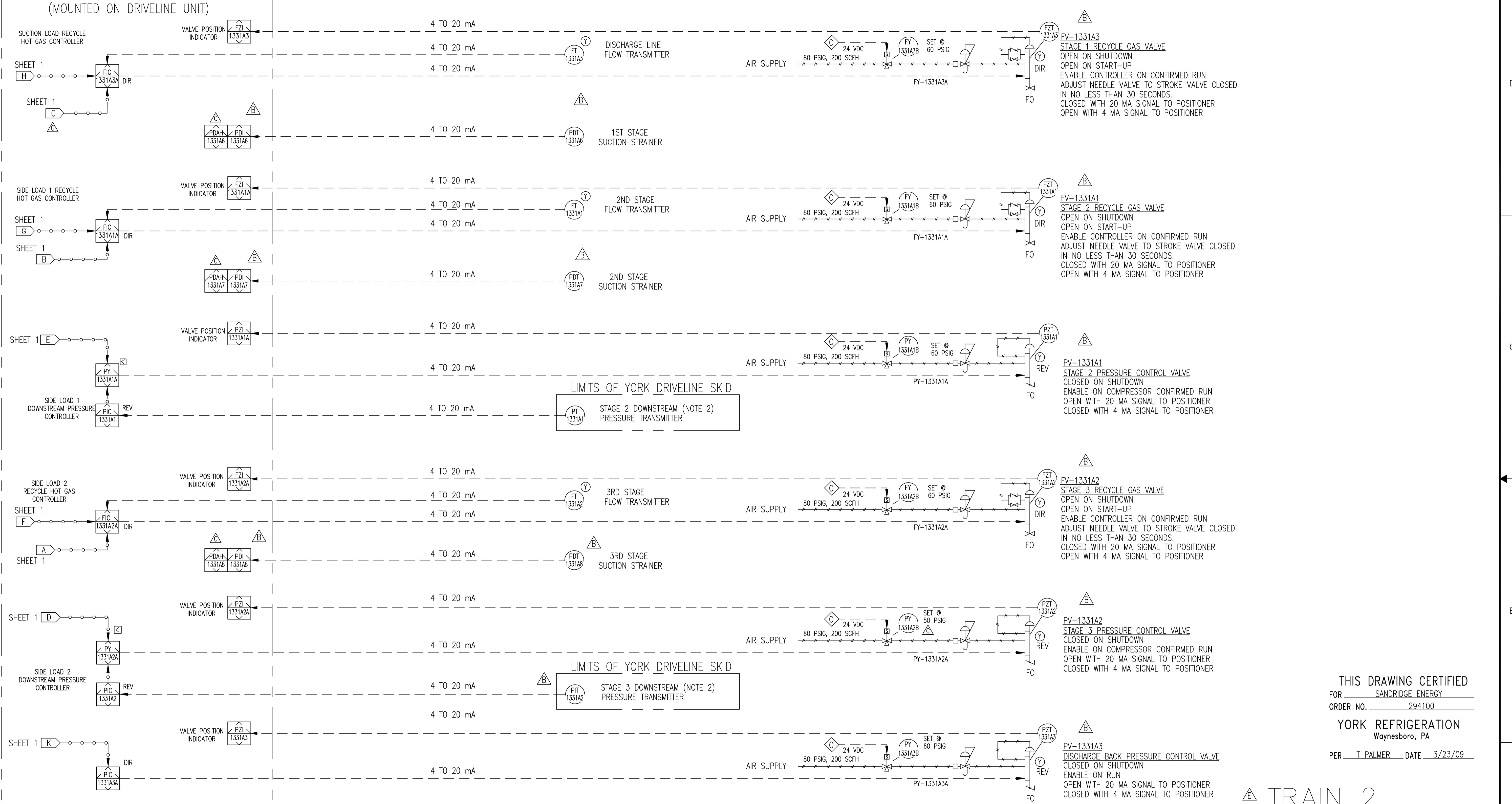


THIS DRAWING CERTIFIED  
FOR SANDRIDGE ENERGY  
ORDER NO. 294100  
YORK REFRIGERATION  
Waynesboro, PA  
PER T PALMER DATE 3/23/09

TRAIN 2

|  |          |   |                 |
|--|----------|---|-----------------|
| PURCHASER SANDRIDGE ENERGY<br>1601 N.W EXPRESSWAY SUITE 1600<br>OKLAHOMA CITY, OK 73118                  |          | NOTICE TO PURCHASER<br>REFER TO CONTRACT FOR MATERIAL TO<br>BE SUPPLIED BY YORK REFRIGERATION.<br>THE AMOUNT OF SUCH MATERIAL IS<br>NOT INCREASED BY ANYTHING<br>SHOWN UPON THIS DRAWING. |                 |
| YORK ORD NO 294100   |          | PURCH ORD NO 27607-P-013-012JCI   |                 |
| UNLESS OTHERWISE SPECIFIED<br>DIMENSIONS ARE IN INCHES<br>DO NOT SCALE                                   |          | JOHNSON<br><b>YORK</b><br>Process Systems<br>Waynesboro, PA<br>17268  |                 |
| TITLE<br>PNEUMATIC/ELECTRIC DIAGRAM<br>YORK M555BA CENTRIFUGAL COMPRESSOR<br>R-134A REFRIGERATION SYSTEM |          |   |                 |
| DR T. PALMER   | 12/15/08 | SIZE D  | CAGE CODE 23587 |
| CHK H. KUTZ  | 12/22/08 | DWG NO 669D0124   | REV E           |
| APPD T. PALMER   | 12/22/08 | SCALE NONE  | SHEET 3 OF 5    |

LIMITS OF PLC PANEL  
(MOUNTED ON DRIVELINE UNIT)



FV-1331A3  
STAGE 1 RECYCLE GAS VALVE  
OPEN ON SHUTDOWN  
OPEN ON START-UP  
ENABLE CONTROLLER ON CONFIRMED RUN  
ADJUST NEEDLE VALVE TO STROKE VALVE CLOSED  
IN NO LESS THAN 30 SECONDS.  
CLOSED WITH 20 MA SIGNAL TO POSITIONER  
OPEN WITH 4 MA SIGNAL TO POSITIONER

FV-1331A1  
STAGE 2 RECYCLE GAS VALVE  
OPEN ON SHUTDOWN  
OPEN ON START-UP  
ENABLE CONTROLLER ON CONFIRMED RUN  
ADJUST NEEDLE VALVE TO STROKE VALVE CLOSED  
IN NO LESS THAN 30 SECONDS.  
CLOSED WITH 20 MA SIGNAL TO POSITIONER  
OPEN WITH 4 MA SIGNAL TO POSITIONER

PV-1331A1  
STAGE 2 PRESSURE CONTROL VALVE  
CLOSED ON SHUTDOWN  
ENABLE ON COMPRESSOR CONFIRMED RUN  
OPEN WITH 20 MA SIGNAL TO POSITIONER  
CLOSED WITH 4 MA SIGNAL TO POSITIONER

FV-1331A2  
STAGE 3 RECYCLE GAS VALVE  
OPEN ON SHUTDOWN  
OPEN ON START-UP  
ENABLE CONTROLLER ON CONFIRMED RUN  
ADJUST NEEDLE VALVE TO STROKE VALVE CLOSED  
IN NO LESS THAN 30 SECONDS.  
CLOSED WITH 20 MA SIGNAL TO POSITIONER  
OPEN WITH 4 MA SIGNAL TO POSITIONER

PV-1331A2  
STAGE 3 PRESSURE CONTROL VALVE  
CLOSED ON SHUTDOWN  
ENABLE ON COMPRESSOR CONFIRMED RUN  
OPEN WITH 20 MA SIGNAL TO POSITIONER  
CLOSED WITH 4 MA SIGNAL TO POSITIONER

PV-1331A3  
DISCHARGE BACK PRESSURE CONTROL VALVE  
CLOSED ON SHUTDOWN  
ENABLE ON RUN  
OPEN WITH 20 MA SIGNAL TO POSITIONER  
CLOSED WITH 4 MA SIGNAL TO POSITIONER

- NOTES:
- ALL INSTRUMENTS SHOWN OUTSIDE OF LIMITS OF PLC PANEL ARE SUPPLIED, INSTALLED AND WIRED BY OTHERS UNLESS INDICATED.
  - THE TERMS "UPSTREAM" AND "DOWNSTREAM" HERE REFER TO LOCATION OF PRESSURE SENSING POINT RELATIVE TO THE BUTTERFLY VALVES IN THE SIDE LOAD SUCTION LINES. IT IS UNDERSTOOD THAT "UPSTREAM" PRESSURE TRANSMITTERS ARE LOCATED IN COMMON SUCTION HEADERS.
  - TAG NUMBERS SHOWN ARE FOR TRAIN 2 ITEM 8000, LETTER "A" IN TAG NUMBER SHALL BE SEQUENCED "1331B" THRU "1331E" FOR ITEMS 9000 THRU 12000.
  - DELETE -

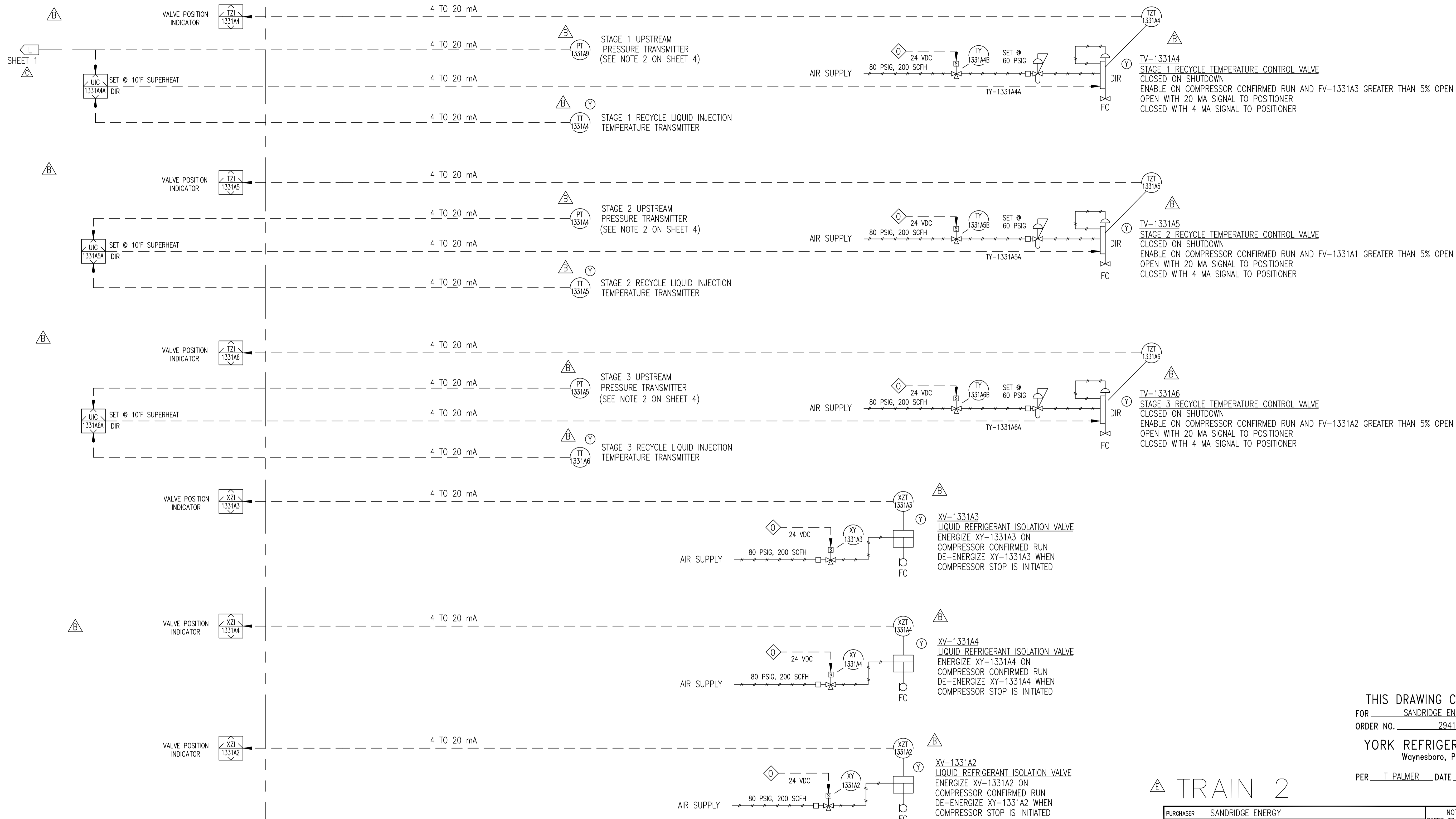
THIS DRAWING CERTIFIED  
FOR SANDRIDGE ENERGY  
ORDER NO. 294100  
YORK REFRIGERATION  
Waynesboro, PA  
PER T PALMER DATE 3/23/09

TRAIN 2

|  |          |   |                 |
|--|----------|---|-----------------|
| PURCHASER SANDRIDGE ENERGY<br>1601 N.W. EXPRESSWAY SUITE 1600<br>OKLAHOMA CITY, OK 73118                 |          | NOTICE TO PURCHASER<br>REFER TO CONTRACT FOR MATERIAL TO<br>BE SUPPLIED BY YORK REFRIGERATION.<br>THE AMOUNT OF SUCH MATERIAL IS<br>NOT INCREASED BY ANYTHING<br>SHOWN UPON THIS DRAWING. |                 |
| YORK ORD NO 294100   |          | PURCH ORD NO 27607-P-13-012JCI  |                 |
| UNLESS OTHERWISE SPECIFIED<br>DIMENSIONS ARE IN INCHES<br>DO NOT SCALE                                   |          | YORK<br>Process Systems<br>Waynesboro, PA<br>17268  |                 |
| TITLE<br>PNEUMATIC/ELECTRIC DIAGRAM<br>YORK M555BA CENTRIFUGAL COMPRESSOR<br>R-134A REFRIGERATION SYSTEM |          |   |                 |
| DR T. PALMER   | 12/15/08 | SIZE D  | CAGE CODE 23587 |
| CHK H. KUTZ  | 12/22/08 | DWG NO 669D0124   | REV E           |
| APPD T. PALMER   | 12/22/08 | SCALE NONE  | SHEET 4 OF 5    |

ALL SHEETS ARE THE SAME REVISION STATUS

LIMITS OF PLC PANEL  
(MOUNTED ON DRIVELINE UNIT)



THIS DRAWING CERTIFIED  
 FOR SANDRIDGE ENERGY  
 ORDER NO. 294100  
 YORK REFRIGERATION  
 Waynesboro, PA  
 PER T PALMER DATE 3/23/09

TRAIN 2

|  |          |   |                 |
|--|----------|---|-----------------|
| PURCHASER SANDRIDGE ENERGY<br>1601 N.W. EXPRESSWAY SUITE 1600<br>OKLAHOMA CITY, OK 73118                 |          | NOTICE TO PURCHASER<br>REFER TO CONTRACT FOR MATERIAL TO BE SUPPLIED BY YORK REFRIGERATION. THE AMOUNT OF SUCH MATERIAL IS NOT INCREASED BY ANYTHING SHOWN UPON THIS DRAWING. |                 |
| YORK ORD NO 294100   |          | PURCH ORD NO 27607-P-13-012JCI  |                 |
| UNLESS OTHERWISE SPECIFIED TOLERANCES PER ASME Y14.5<br>DO NOT SCALE                                     |          | JOHNSON YORK<br>CONTROLS Process Systems<br>Waynesboro, PA 17268  |                 |
| TITLE<br>PNEUMATIC/ELECTRIC DIAGRAM<br>YORK M555BA CENTRIFUGAL COMPRESSOR<br>R-134A REFRIGERATION SYSTEM |          |   |                 |
| DR T. PALMER   | 12/15/08 | SIZE D  | CAGE CODE 23587 |
| CHK H. KUTZ  | 12/22/08 | DWG NO 669D0124   | REV E           |
| APPD T. PALMER   | 12/22/08 | SCALE NONE  | SHEET 5 OF 5    |

ALL SHEETS ARE THE SAME REVISION STATUS