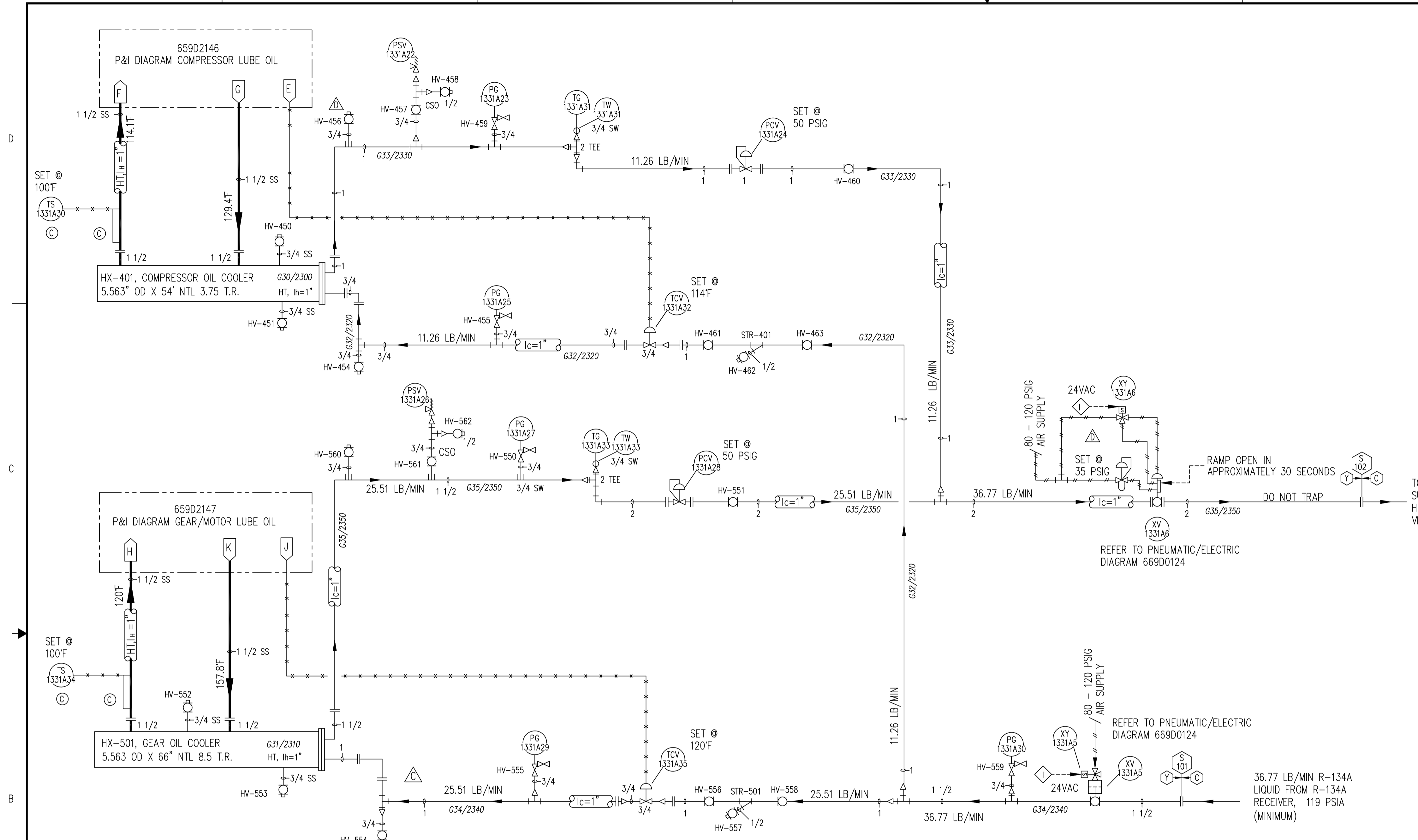


REVISION HISTORY							
ZONE	REV	ECN	DESCRIPTION	DATE	DR	CHK	APPD
	A		REVISIONS PER CUSTOMER AND ENGINEERING REVIEW REFER TO REVISION TRIANGLE \triangle	3/4/09	JES	TTP	TTP
	B		REVISIONS PER CUSTOMER MARK-UPS, TAG NUMBER CHANGES	4/15/09	JES	TTP	TTP
	C		REVISIONS PER BILL OF MATERIAL REVIEW.	6/8/09	JES	TTP	TTP
	D		REVISIONS PER CUSTOMER AND ENGINEERING REVIEW REFER TO REVISION TRIANGLE \triangle	12/22/09	TTP	TTP	TTP
	E		AS-BUILT CHANGES FOR TRAIN 1 REFER TO REVISION TRIANGLE \triangle	2/22/10	JES	TTP	TTP
	F		REVISED TAG NUMBERS "1231" TO READ "1331" AND ADDED "TRAIN 2" ABOVE TITLE BLOCK. ALSO REVISED NOTE 12 AND DELETED NOTE 13.	3/19/10	JES	TTP	TTP



- NOTES:
- REFERENCE DRAWINGS:
P & I DIAGRAM, (6) REFRIGERATION COMPRESSOR UNITS: 659D2149
GENERAL ARRANGEMENT, COMPR. DRIVELINE: 569D2540
P & I DIAGRAM, COMPRESSOR LUBE OIL 659D2146
GENERAL ARRANGEMENT, COMPRESSOR LUBE OIL MODULE: 569D2560
P & I DIAGRAM, GEAR/MOTOR LUBE OIL: 659D2147
GENERAL ARRANGEMENT, GEAR/MOTOR LUBE OIL MODULE: 569D2561
P & I DIAGRAM, REFRIGERANT OIL COOLERS: 659D2148
PNEUMATIC/ELECTRIC DIAGRAM: 669D0124
LOGIC DIAGRAM: 669D0127
PLC PANEL: 645D1279
COMPRESSOR PROXIMATOR BOX: 648D2383
GEAR PROXIMATOR BOX: 648D2384
P & ID LEGEND: 650D0020
 - AREA CLASSIFICATION:
OUTDOOR, UNDER ROOF, HAZARDOUS, NEMA 4X, CL 1, GR C&D, DIV 2
 - ALL MANUAL VALVES ARE NORMALLY OPEN (NO), UNLESS NOTED
NORMALLY CLOSED (NC), EXCEPT VENT AND DRAIN VALVES
WHICH ARE NORMALLY CLOSED.
 - ALL CUSTOMER CONNECTIONS ARE FURNISHED WITH EITHER PIPE
PLUGS OR SEALING DISKS.
 - MAJOR PIPING CUSTOMER CONNECTIONS ARE LISTED IN CHART.
AUXILIARY CONNECTIONS (E.G. PNEUMATIC, ELECTRIC, RELIEF
VENT, ETC.) ARE NOT LOCATED. REFER TO GA, WIRING DIAGRAM
AND JUNCTION BOX DRAWINGS, ETC., FOR ADDITIONAL INFORMATION.
 - INSULATION AND HEAT TRACING "BY OTHERS", (REFER TO LEGEND).
CONSULT WITH YORK ENGINEERING FOR SPECIAL LUBE SYSTEM HEAT
TRACING AND INSULATION WHEN THE AVERAGE AMBIENT TEMPERATURE
AT START-UP WILL BE LESS THAN 40° F.
 - CAUTION: DO NOT CLOSE SERVICE VALVES IN LIQUID PIPING UNLESS
THE ISOLATED PIPING IS OPENED IMMEDIATELY FOR SERVICE.
EXCESSIVE PRESSURE CAN DEVELOP FROM THERMAL EXPANSION.
 - DELETE ---
 - INTERCONNECTING PIPING IS "BY OTHERS". PIPE HANGERS SHOULD BE
USED AS NECESSARY TO AVOID EXCESS STRESS ON PIPING AND
COMPONENTS. SUPPORTS ARE SUPPLIED AND INSTALLED "BY OTHERS".
(PIPING FLEXIBILITY ANALYSIS FOR EXTERNAL PIPING IS "BY OTHERS").
DESIGN WORKING PRESSURE 200 PSIG.
 - TOTAL AIR SUPPLY REQUIRED: 4000 SCFH, 80-100 PSIG.
AIR QUALITY REQUIRED IN ACCORDANCE WITH ISA S7.0.01.
 - TAG NUMBERS SHOWN ARE FOR TRAIN 2 ITEM 8000, LETTER "A" IN TAG NUMBER
SHALL BE SEQUENCED "1331B" THRU "1331E" FOR ITEMS 9000 THRU 12000.
 - DELETE -

- HX-401 \triangle OIL COOLER; API BASCO; MODEL NUMBER: 05054 BEU; SS; 5.563" OD x 54" NTL; TYPE BEU WITH (34) PLAIN STAINLESS STEEL "U" TUBES; 3/8" OD X 24 BWG; 2 PASSES TUBESIDE; 200 PSIG SHELLSIDE/ 200 PSIG TUBESIDE; -20/250°F DWT; ASME CODE AND TEMA CLASS 'C'; DUTY: 44940 BTUH COOLING 14.32 US GPM YORK J OIL SHELLSIDE; USING 675.6 LB/HR R-134A EVAPORATING TUBESIDE AT 51°F
- HX-501 \triangle OIL COOLER; API BASCO; MODEL NUMBER: 05066 BEU; SS; 5.563" OD x 66" NTL; TYPE BEU WITH (34) PLAIN STAINLESS STEEL "U" TUBES; 3/8" OD X 24 BWG; 2 PASSES TUBESIDE; 200 PSIG SHELLSIDE/ 200 PSIG TUBESIDE; -20/250°F DWT ASME CODE AND TEMA CLASS 'C'; DUTY: 101800 BTUH COOLING 13 US GPM LIGHT TURBINE OIL SHELLSIDE; USING 1530.6 LB/HR R-134A EVAPORATING TUBESIDE AT 51°F

ASME SAFETY RELIEF VALVE LEGEND				
PSV #	MANUFACTURER, MODEL	INLET SIZE	OUTLET SIZE	SET PRESSURE
403	HYDROSEAL 15D1FOC10	1/2"	1"	200 PSIG
503	HYDROSEAL 15D1FOC10	1/2"	1"	200 PSIG

CONNECTION LEGEND				
CONN	SIZE	DESCRIPTION	QTY	
S-101	1 1/2"-CL 150 ANSI FLANGE	REFRIGERANT LIQUID INLET	1	
S-102	2"-CL 150 ANSI FLANGE	REFRIGERANT LIQUID OUTLET	1	

THIS DRAWING CERTIFIED
FOR SANDRIDGE ENERGY
ORDER NO. 294100
YORK REFRIGERATION
Waynesboro, PA
PER T. PALMER DATE 3/4/09

TRAIN 2

PURCHASER SANDRIDGE ENERGY		NOTICE TO PURCHASER REFER TO CONTRACT FOR MATERIAL TO BE SUPPLIED BY YORK REFRIGERATION. THE AMOUNT OF SUCH MATERIAL IS NOT INCREASED BY ANYTHING SHOWN UPON THIS DRAWING.	
1601 N.W. EXPRESSWAY SUITE 1600 OKLAHOMA CITY, OK 73118		Waynesboro, PA 17268	
YORK ORD NO 294100		PURCH ORD NO 27607-P-13-012JCI	
UNLESS OTHERWISE SPECIFIED DIMENSIONS ARE IN INCHES DO NOT SCALE		JOHNSON CONTROLS YORK Process Systems	
UNLESS OTHERWISE SPECIFIED TOLERANCES PER GAP 18		TITLE P & I DIAGRAM REFRIGERANT OIL COOLERS YORK M555BA DRIVELINE	
DEC ZPL	DEC ZPL	FRACT	ANGLE
DR D HUFF	12/12/2008		
CHK L. ALEXANDER	12/22/08	SIZE	CASE CODE
APPD T. PALMER	12/22/08	D 23587	DWG NO 659D2148
CODE	SCALE NONE		REV F
			SHEET 1 OF 1