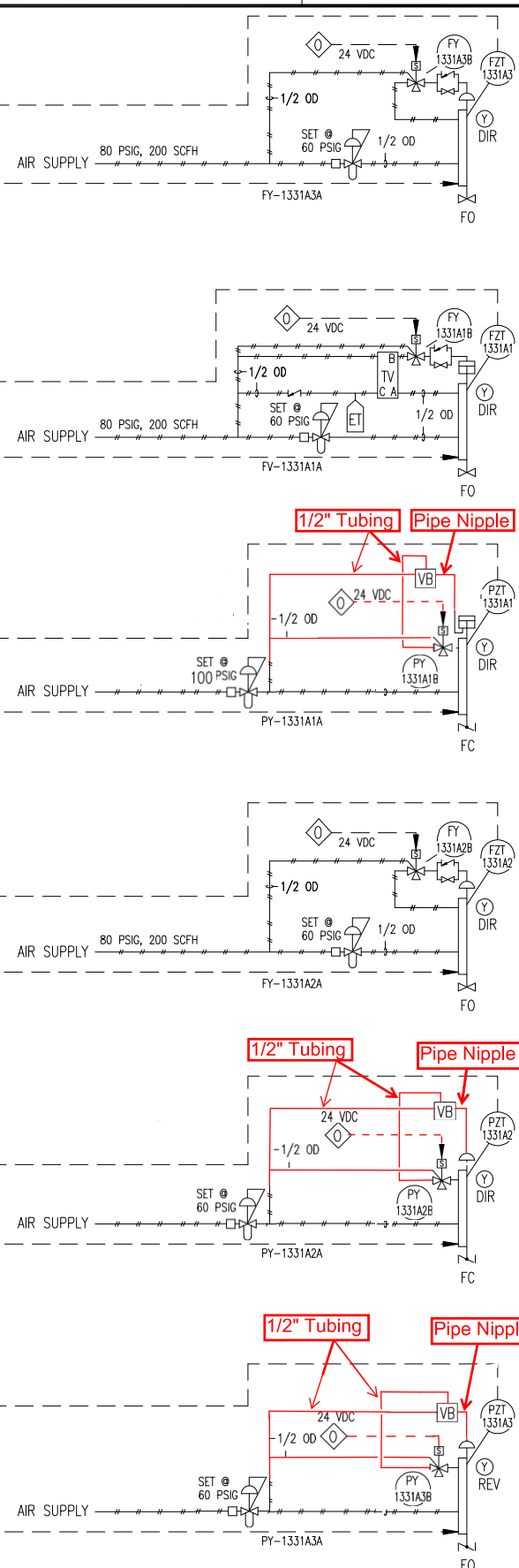
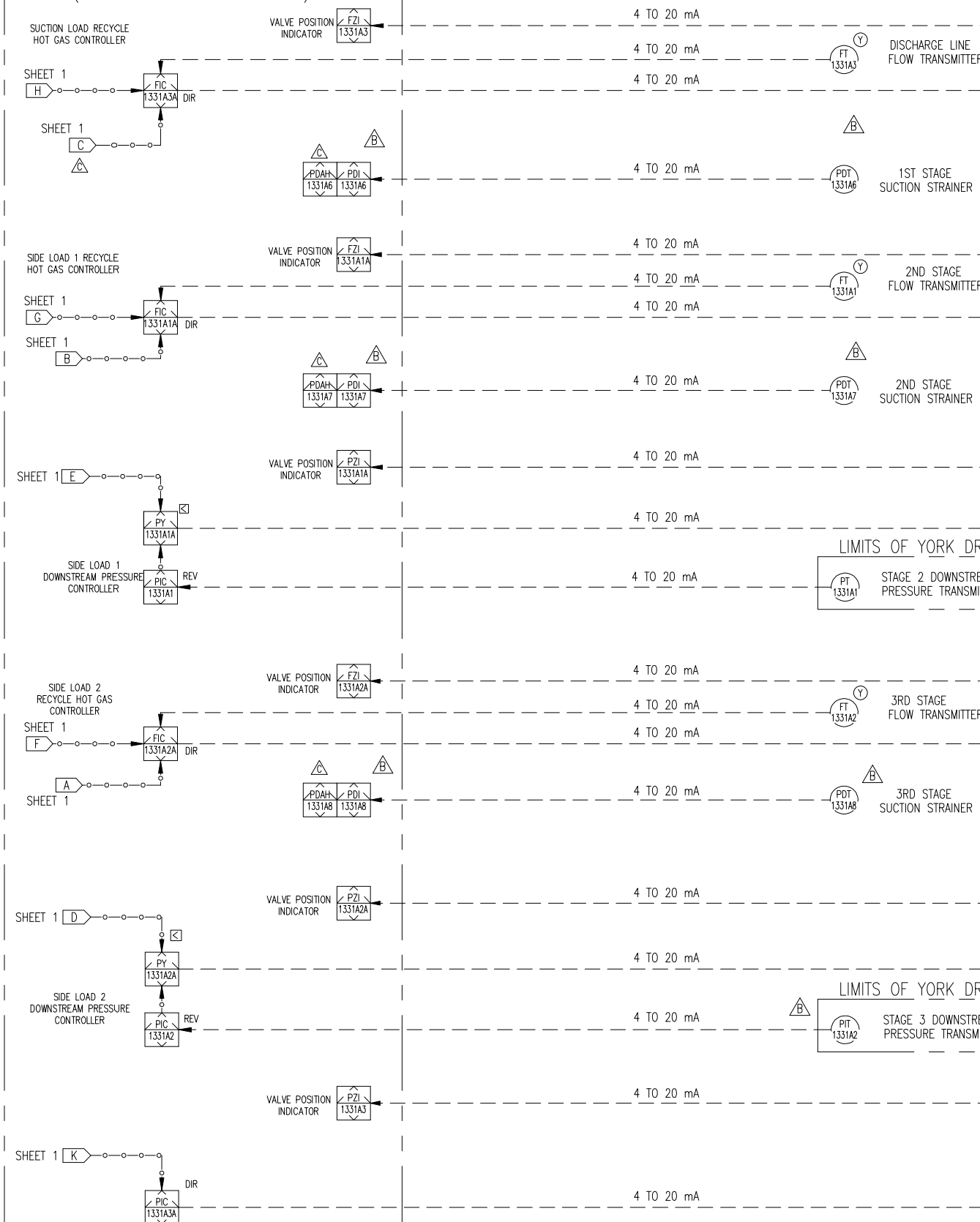


LIMITS OF PLC PANEL
(MOUNTED ON DRIVELINE UNIT)



FV-1331A3
STAGE 1 RECYCLE GAS VALVE
OPEN ON SHUTDOWN
OPEN ON START-UP
ENABLE CONTROLLER ON CONFIRMED RUN
ADJUST NEEDLE VALVE TO STROKE VALVE CLOSED
IN NO LESS THAN 30 SECONDS.
CLOSED WITH 20 MA SIGNAL TO POSITIONER
OPEN WITH 4 MA SIGNAL TO POSITIONER

FV-1331A1
STAGE 2 RECYCLE GAS VALVE
OPEN ON SHUTDOWN
OPEN ON START-UP
ENABLE CONTROLLER ON CONFIRMED RUN
ADJUST NEEDLE VALVE TO STROKE VALVE CLOSED
IN NO LESS THAN 30 SECONDS.
CLOSED WITH 20 MA SIGNAL TO POSITIONER
OPEN WITH 4 MA SIGNAL TO POSITIONER

PV-1331A1
STAGE 2 PRESSURE CONTROL VALVE
CLOSED ON SHUTDOWN
ENABLE ON COMPRESSOR CONFIRMED RUN
OPEN WITH 20 MA SIGNAL TO POSITIONER
CLOSED WITH 4 MA SIGNAL TO POSITIONER

FV-1331A2
STAGE 3 RECYCLE GAS VALVE
OPEN ON SHUTDOWN
OPEN ON START-UP
ENABLE CONTROLLER ON CONFIRMED RUN
ADJUST NEEDLE VALVE TO STROKE VALVE CLOSED
IN NO LESS THAN 30 SECONDS.
CLOSED WITH 20 MA SIGNAL TO POSITIONER
OPEN WITH 4 MA SIGNAL TO POSITIONER

PV-1331A2
STAGE 3 PRESSURE CONTROL VALVE
CLOSED ON SHUTDOWN
ENABLE ON COMPRESSOR CONFIRMED RUN
OPEN WITH 20 MA SIGNAL TO POSITIONER
CLOSED WITH 4 MA SIGNAL TO POSITIONER

PV-1331A3
DISCHARGE BACK PRESSURE CONTROL VALVE
50% ON SHUTDOWN
ENABLE ON RUN
OPEN WITH 20 MA SIGNAL TO POSITIONER
CLOSED WITH 4 MA SIGNAL TO POSITIONER

LIMITS OF YORK DRIVELINE SKID
STAGE 2 DOWNSTREAM (NOTE 2)
PRESSURE TRANSMITTER

LIMITS OF YORK DRIVELINE SKID
STAGE 3 DOWNSTREAM (NOTE 2)
PRESSURE TRANSMITTER

- NOTES:
- ALL INSTRUMENTS SHOWN OUTSIDE OF LIMITS OF PLC PANEL ARE SUPPLIED, INSTALLED AND WIRED BY OTHERS UNLESS INDICATED.
 - THE TERMS "UPSTREAM" AND "DOWNSTREAM" HERE REFER TO LOCATION OF PRESSURE SENSING POINT RELATIVE TO THE BUTTERFLY VALVES IN THE SIDE LOAD SUCTION LINES. IT IS UNDERSTOOD THAT "UPSTREAM" PRESSURE TRANSMITTERS ARE LOCATED IN COMMON SUCTION HEADERS.
 - TAG NUMBERS SHOWN ARE FOR TRAIN 2 ITEM 8000, LETTER "A" IN TAG NUMBER SHALL BE SEQUENCED "1331B" THRU "1331E" FOR ITEMS 9000 THRU 12000.
 - DELETE -

THIS DRAWING CERTIFIED
FOR SANDRIDGE ENERGY
ORDER NO. 294100
YORK REFRIGERATION
Waynesboro, PA
PER T. PALMER DATE 3/23/09

TRAIN 2

PURCHASER SANDRIDGE ENERGY 1601 N.W. EXPRESSWAY SUITE 1600 OKLAHOMA CITY, OK 73118		NOTICE TO PURCHASER REFER TO CONTRACT FOR MATERIAL TO BE SUPPLIED BY YORK REFRIGERATION. THE AMOUNT OF SUCH MATERIAL IS NOT INCREASED BY ANYTHING SHOWN UPON THIS DRAWING.	
YORK ORD NO. 294100	PURCH ORD NO. 27607-P-13-012JCI	UNLESS OTHERWISE SPECIFIED DIMENSIONS ARE IN INCHES DO NOT SCALE	
THIRD ANGLE PROJECTION		JOHNSON CONTROLS YORK Process Systems Waynesboro, PA 17268	
TITLE PNEUMATIC/ELECTRIC DIAGRAM YORK M555BA CENTRIFUGAL COMPRESSOR R-134A REFRIGERATION SYSTEM			
DR. T. PALMER	12/15/08	SIZE D	CAGE CODE 23587
CHK. H. KUTZ	12/22/08	DWG NO. 669D0124	REV. F
APPD. T. PALMER	12/22/08	SCALE NONE	SHEET 4 OF 5

ALL SHEETS ARE THE SAME REVISION STATUS