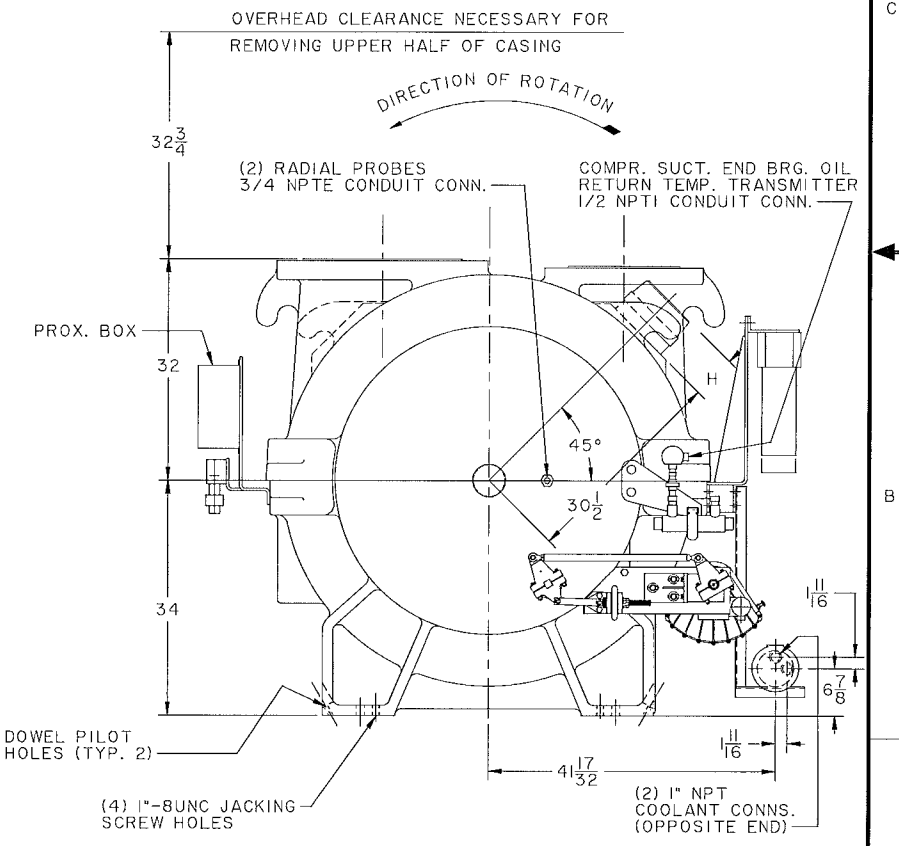
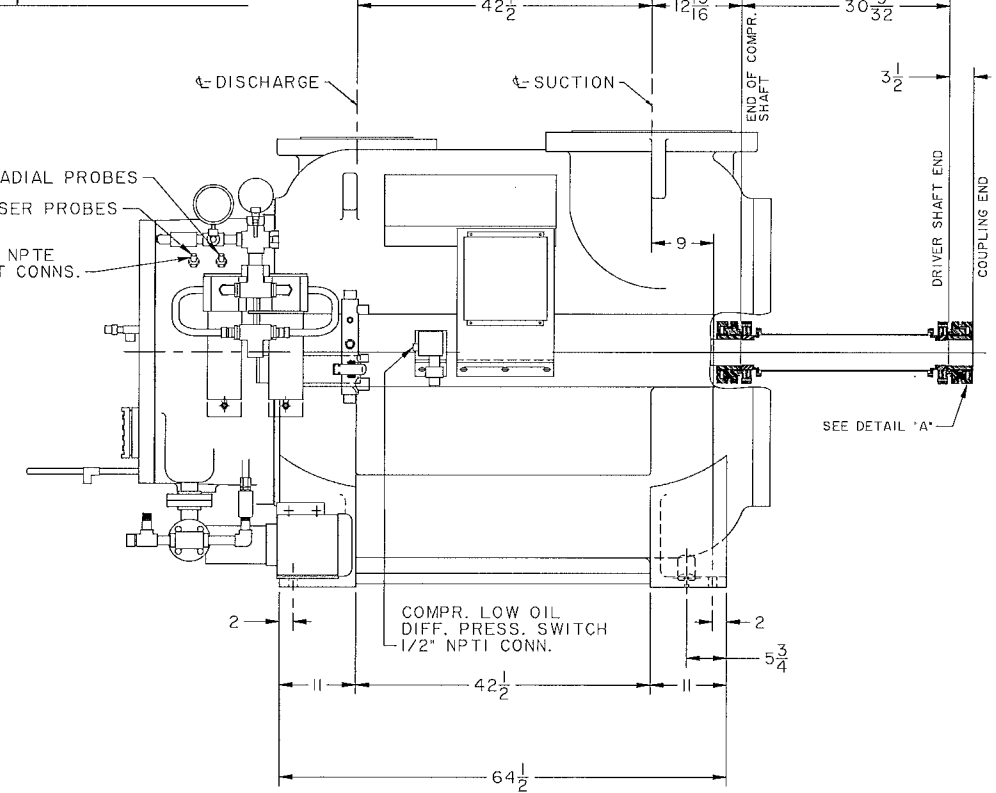
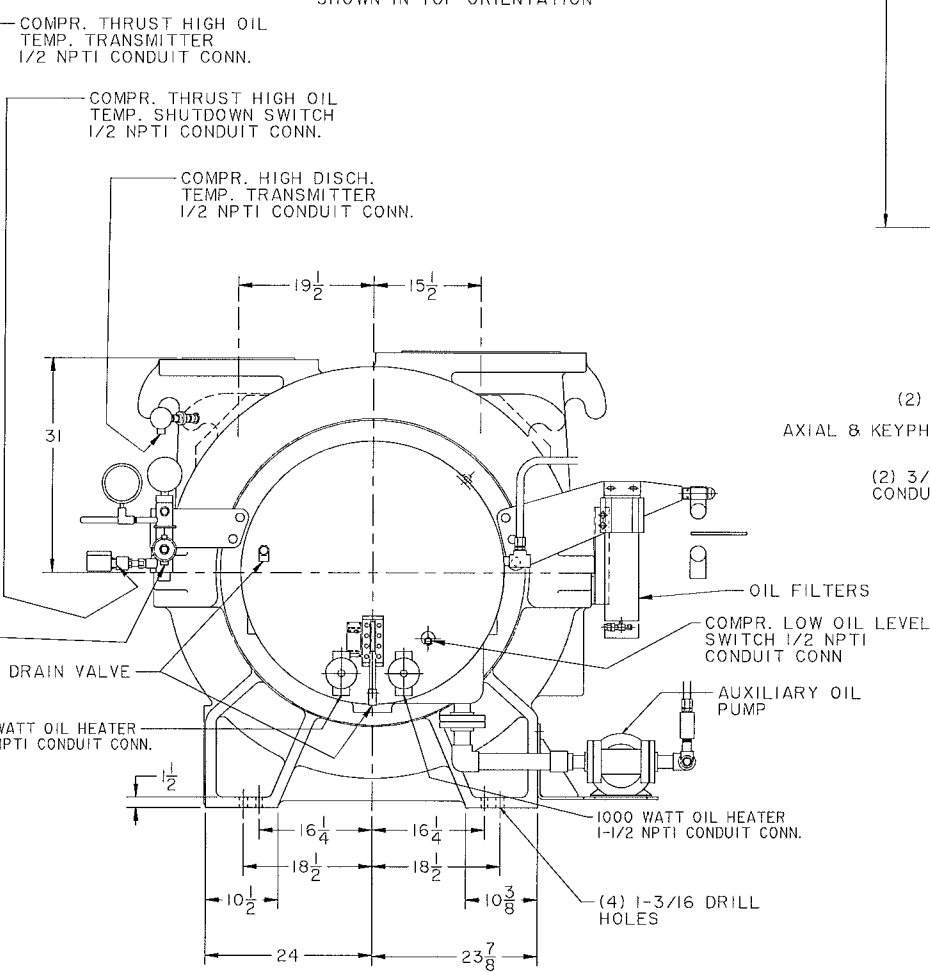
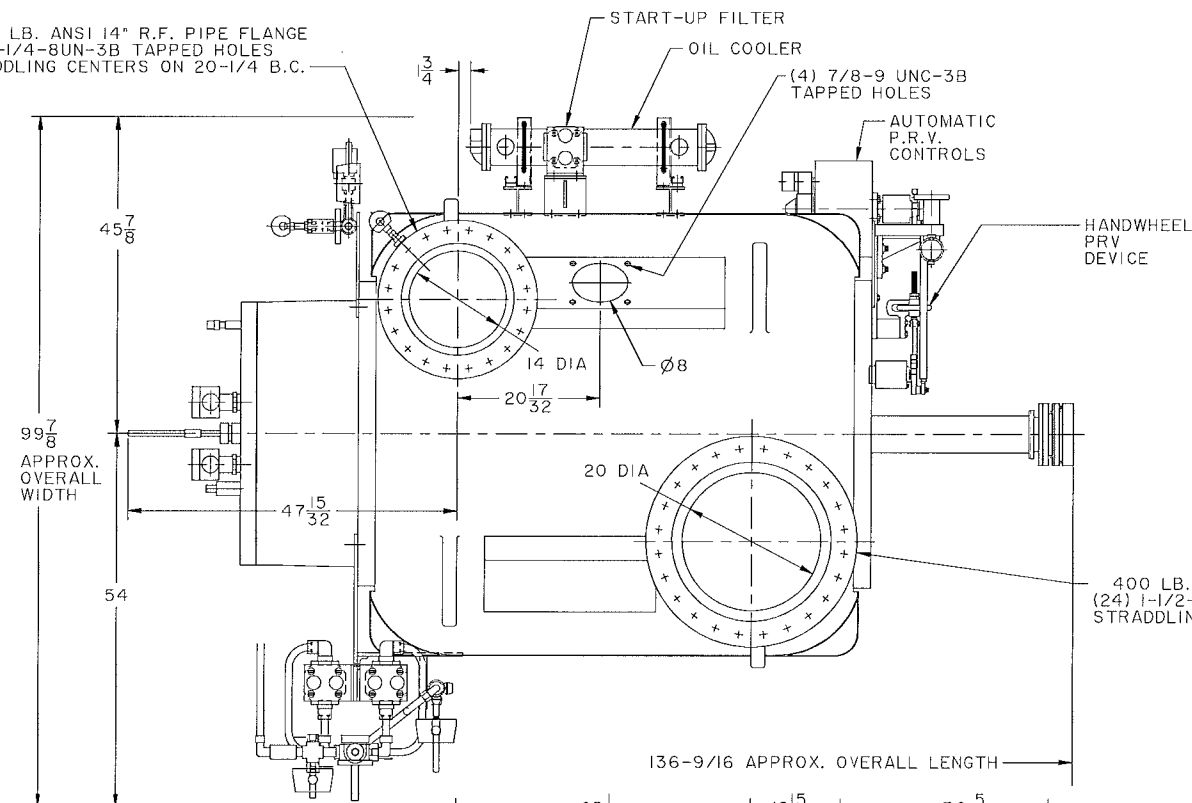
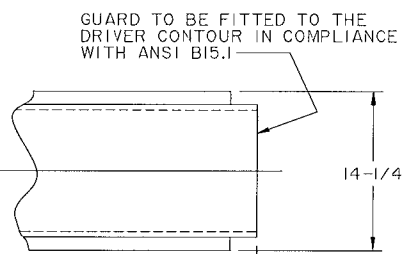


400 LB. ANSI 14" R.F. PIPE FLANGE  
(20) 1-1/4"-BUN-3B TAPPED HOLES  
STRADDLING CENTERS ON 20-1/4 B.C.

NOTE:  
SPACE WITHIN OVERALL LENGTH  
& WIDTH DIMENSIONS SHOWN ON  
THIS DRAWING MUST BE KEPT CLEAR  
FOR COMPRESSOR APPARATUS.

PROJECT NAME KING ABDULLAH  
BIN ABDULAZIZ PROJECT  
THIRD SAUDI EXPANSION  
OF HOLY HARAM MAKKAH  
AND SURROUNDING AREAS  
CENTRAL UTILITY COMPLEX  
AND SERVICE TUNNEL

PURCHASE ORDER NO JSFP-2792 JSFP-2947  
SUPPLIER YORK, A JOHNSON CONTROLS CO.  
YORK, PA.  
JCI-YORK ORDER NO 0J060251-02, 1J060034-02  
EQUIPMENT COMPRESSOR FOR TITAN OM 5090 R-134a  
MOTOR DRIVE CHILLERS



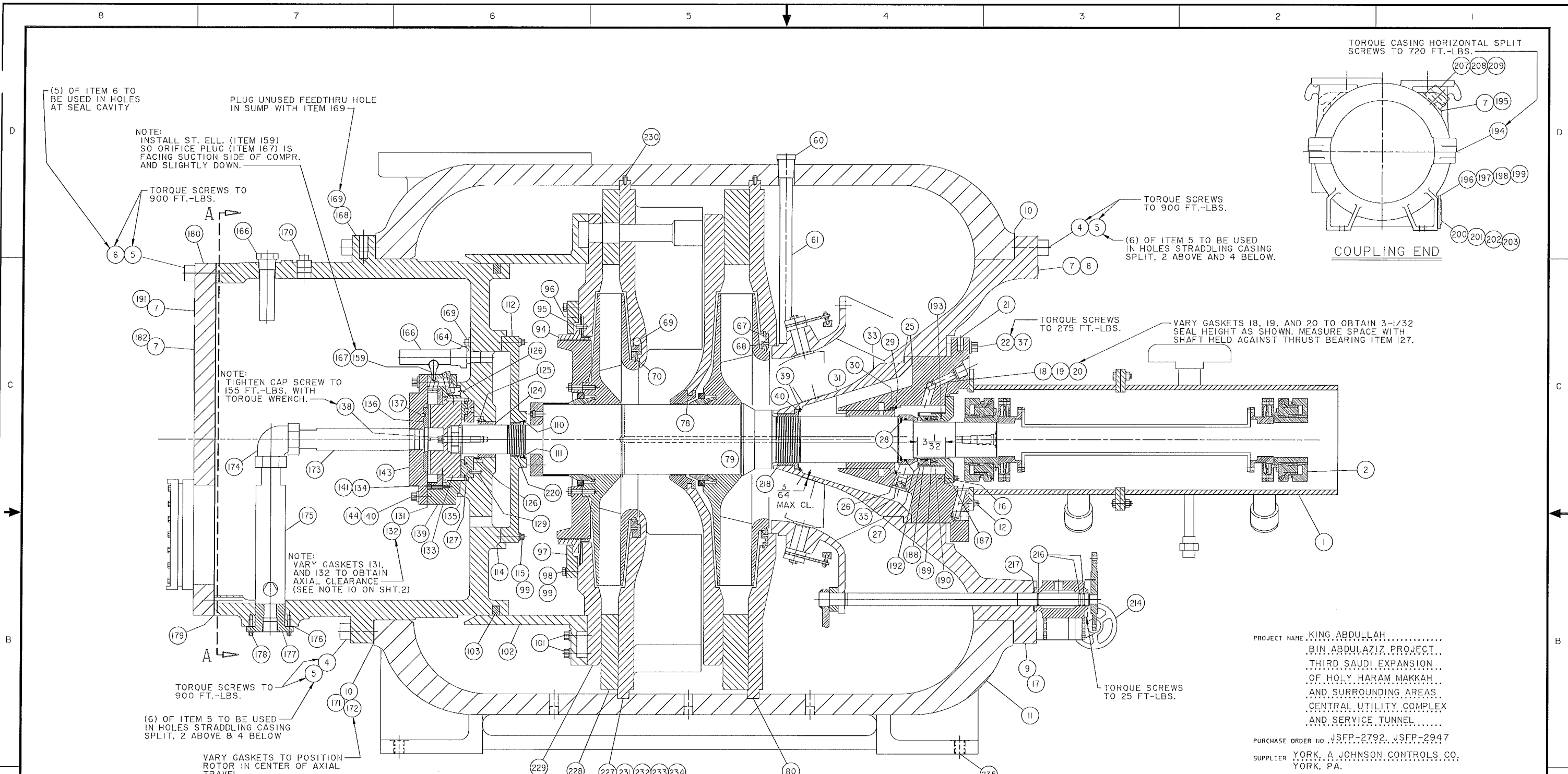
0J060251-02 & 1J060034-02

YORK INTERNATIONAL CORPORATION  
YORK, PA. 17405

REV. LEV.	DATE	REVISION RECORD	CHG. NO.	DR.	CK.	REV. LEV.	DATE	REVISION RECORD	CHG. NO.	DR.	CK.	REV. LEV.	DATE	REVISION RECORD	CHG. NO.	DR.	CK.
-		NEW	0910 3558														
A	0-26-10	OM 5090 WAS OM 5000 AT C-1	0910 3609	DBG	BLK												
B	2-17-10	ADDED JSFP-2947 AT D-1, 1J060034-02 AT C-1 & A-3	0910 3630	DBG	MS												
C	01-10-11	136-9/16 WAS 135-1/16 AT C-4: 47-15/32 WAS 45-31/32 AT C-5	0911 3503	DBG	BLK												

ALL PROPRIETARY RIGHTS IN THE SUBJECT MATTER HEREOF ARE RESERVED, AND NO PERMISSION IS GRANTED TO REPRODUCE THIS PRINT IN WHOLE OR IN PART, OR DISCLOSE ANY OF THE INFORMATION UPON IT TO OTHERS WITHOUT WRITTEN RELEASE BY YORK INTERNATIONAL CORPORATION.		DIMENSIONS ARE IN INCHES DO NOT SCALE TOLERANCES PER ENG. STD. M-282 WELDING PER ENG. STD. M-30 REF. DWG.		COMPRL. ARRGT. 55" RIVERHAWK CPLG MULTI-STAGE TURBO		MATERIAL TYPE _____ ENG. STD. _____ PART NO. _____ CUT SIZE _____	
NAME DR. D.B. GRAYBILL APPR. B.L. KNAUB SCALE: N.T.S.	DATE 08-30-10 09-16-10	SIZE D	CAGE NO. 66935	DRAWING NUMBER 081-17976-000		WT. =	SHEET

P.402



PROJECT NAME KING ABDULLAH  
 BIN ABDULAZIZ PROJECT  
 THIRD SAUDI EXPANSION  
 OF HOLY HARAM MAKKAH  
 AND SURROUNDING AREAS  
 CENTRAL UTILITY COMPLEX  
 AND SERVICE TUNNEL

PURCHASE ORDER NO JSFP-2792 JSFP-2947  
 SUPPLIER YORK, A JOHNSON CONTROLS CO.  
 YORK, PA.

JCI-YORK ORDER NO. OJ060251-02, IJ060034-02  
 EQUIPMENT COMPRESSOR FOR TITAN OM 5090 R-134a  
 MOTOR DRIVE CHILLERS

- NOTES:
- VACUUM HOLD TEST REQUIRED.
  - HYDROSTATIC TEST PRESS. 450 P.S.I.G
  - AIR/NITROGEN LEAK TEST PRESS. 300 P.S.I.G.
  - NITROGEN LEAK TEST COMPRESSOR AND ALL COMPRESSOR COMPONENTS AFTER RUN-IN (BEFORE SHIPMENT) PRESSURIZE TO 330 P.S.I.G. MOMENTARILY BEFORE REDUCING TO TEST PRESSURE.
  - THIS IS AN R-134A COMPRESSOR APPLICATION WHICH REQUIRES YORK 'J' OIL. CHARGE AND FLUSH WITH YORK 'J' OIL ONLY. DO NOT MIX OILS.
  - THE FOLLOWING YORK SPECIFICATIONS APPLY TO COMPRESSOR AND COMPONENTS: M-320, M-344, AND M-451.

OJ060251-02 & IJ060034-02

YORK INTERNATIONAL CORPORATION YORK, PA. 17405			
DIMENSIONS ARE IN INCHES DO NOT SCALE TOLERANCES PER ENG. STD. M-282 REF. DWG.		MATERIAL 255 RIVERHAWK CPLG. MULTI-STAGE	
NAME DR. A.WOTTO APPR. B.L. KNAUB	DATE 09-07-10 09-10-10	SIZE D	CAGE NO 66935
DRAWING NUMBER 381-17974-000		SHEET 1 OF 3	
WT. =		LBS.	ORIG. NO. 381-17924D

REV. LEV.	DATE	REVISION RECORD	CHG. NO.	DR.	CK.	REV. LEV.	DATE	REVISION RECORD	CHG. NO.	DR.	CK.	REV. LEV.	DATE	REVISION RECORD	CHG. NO.	DR.	CK.
-		NEW	0910 3556														
A	09-22-10	DEL. ITEM 7 AND 183 (C8).	0910 3598	LCC	LCC												
B	0-26-10	OM 5090 WAS OM 5000 AT A-I: ADDED ITEM 126 AT C-6	0910 3609	DBG	BLK												
C	1-18-10	ADDED ITEM 169 AT C-6	0910 3619	DBG	BLK												
D	2-17-10	ADDED JSFP-2947 AT B-I, IJ060034-02 AT A-I & A-3	0910 3630	DBG	MS												

P403

NOTES

9. COMPRESSOR IS EQUIPPED WITH BENILY NEVADA 3300 XL NSv 5 METER MONITORING SYSTEM.

10. COMPRESSOR AXIAL CLEARANCE:

SET COMPRESSOR AXIAL CLEARANCE, USING AXIAL PROBE VOLTAGE READINGS AT FORWARD AND REVERSE THRUST POSITION. THE DIFFERENCE BETWEEN THESE VOLTAGE READINGS SHOULD BE:

2.4 TO 3.8 V (.012-.019" REF.)

II. AXIAL CLEARANCE MEASUREMENT:

- II.1 MEASURE AXIAL PROBE VOLTAGE OUTPUT AT FORWARD THRUST ROTOR POSITION.
- II.2 MEASURE AXIAL PROBE VOLTAGE OUTPUT AT REVERSE THRUST ROTOR POSITION.
- II.3 SUBTRACT REVERSE VOLTAGE FROM FORWARD ONE AND GET THE DIFFERENCE  $\Delta V$
- II.4 FIND AXIAL CLEARANCE (AS CAN BE SEEN ON THE BN MONITOR) FROM THE TABLE BELOW.

$\Delta V$ , VOLTS	AXIAL CLEARANCE, MILS
1.0	5
1.2	6
1.4	7
1.6	8
1.8	9
2.0	10
2.2	11
2.4	12
2.6	13
2.8	14
3.0	15
3.2	16
3.4	17
3.6	18
3.8	19
4.0	20
4.2	21
4.4	22

17. EXCESS CABLE ON FEEDTHRUS TO BE COILED AND SECURELY FASTENED TO PIPING ATTACHED TO FEEDTHRUS TO PREVENT FLEXING AND BREAKING OFF. DO NOT USE SEALERS ON ITEMS 238 AND 240. ITEMS 238 AND 240 ARE TO BE REMOVED PRIOR TO FINAL INSTALLATION.

12. PROBE GAPPING:

12.1 GAP RADIAL AND KEYPHASOR PROBES AT -7.3 TO -7.7 V DURING ASSEMBLY. THE ACCEPTABLE GAP IN SERVICE IS -6.0 TO -9.0 V FOR ALL BN MONITORS.

12.2 GAP AXIAL PROBES AT -7.0 TO -7.2 V DURING ASSEMBLY WITH ROTOR ON THE FORWARD THRUST BEARING. THE ACCEPTABLE GAP IN SERVICE IS:

- 6.21 TO -8.09 V FOR BN 3500 SERIES MONITOR
- 6.5 TO -7.5 V FOR BN 3300 SERIES MONITOR
- 6.53 TO -7.40 V FOR BN 1701 SERIES MONITOR

13. RECOMMENDED MONITOR SETTINGS

PROBE	ALARM	SHUTDOWN
RADIAL	2.0 MIL	2.4 MIL
AXIAL (FORWARD)	5 MIL	10 MIL

THE REVERSE AXIAL ALARM SETPOINT IS BASED ON THE MEASURED CLEARANCE PLUS 2 MILS.

THE REVERSE AXIAL SHUTDOWN SETPOINT IS BASED ON THE MEASURED CLEARANCE PLUS 5 MILS.

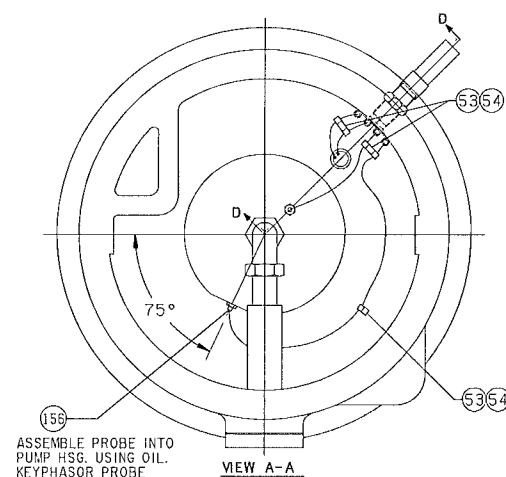
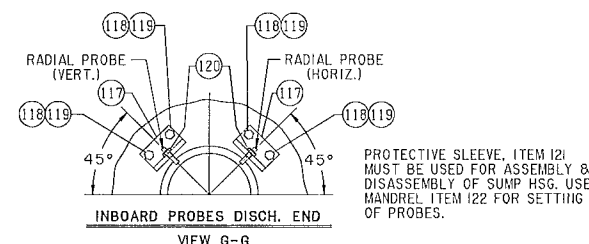
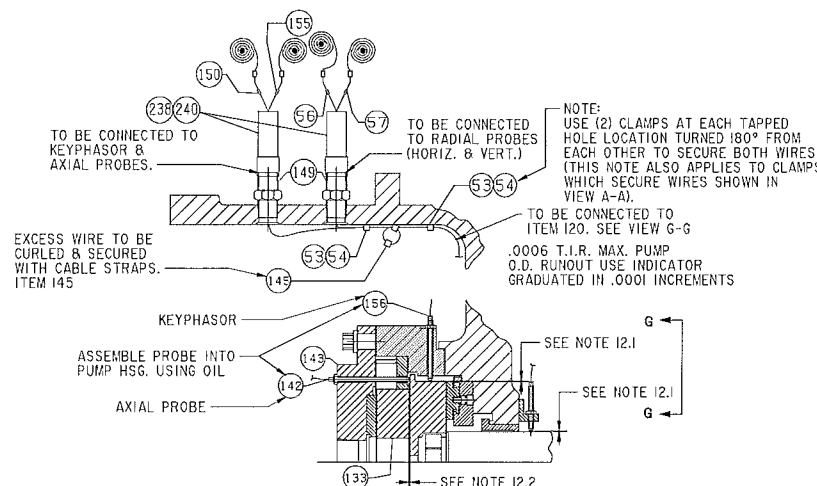
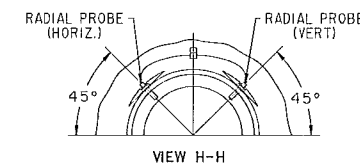
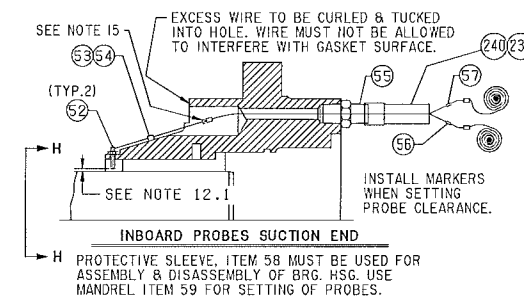
14. NOTES FOR 3300 XL NSv SERIES PROBES:

13.1 USE LOCTITE THREADLOCKER 243 (ITEM 241) ON ALL PROBE LOCKING NUTS. MAX. ALLOWABLE TORQUE = 65 IN. LB.

13.2 TIGHTEN PROBE TO FEEDTHRU CONNECTORS HAND TIGHT AND THEN TURN AN ADDITIONAL 1/8 TURN WITH WRENCH.

15. AFTER PROBES ARE CONNECTED TO FEEDTHRUS WRAP THE CONNECTION WITH TEFLON TAPE THEN APPLY HEAT SHRINKABLE TUBING OVER TAPE AND APPLY HEAT TO SHRINK TUBING. THIS IS APPLICABLE TO ALL INTERNAL PROBES. WAIT UNTIL AFTER FINAL BEARING INSPECTION FOR ALL PROBES MOUNTED IN THE PUMP HSG. ASSEMBLY.

16. STAMP LETTER DESIGNATION FOR EACH PROXIMITY PROBE NEXT TO ITS APPROPRIATE FEEDTHRU HOLE ON EXTERIOR OF SUMP.



REV. LEV.	DATE	REVISION RECORD	CHG. NO.	DR.	CK.	REV. LEV.	DATE	REVISION RECORD	CHG. NO.	DR.	CK.	REV. LEV.	DATE	REVISION RECORD	CHG. NO.	DR.	CK.
-		NEW	0910														
A	09-22-10	SEE SHEETS 1 & 3 FOR REVN.	3558	LCC	LCC												
B	0-26-10	ADDED NOTE 17	3599	DBG	BLK												
C	1-18-10	ADDED NOTE 9	3609	DBG	BLK												
D	2-17-10	SEE SHT 1 FOR REV	3619	DBG	MS												
			3630														

**YORK INTERNATIONAL CORPORATION**  
YORK, PA. 17405

DIMENSIONS ARE IN INCHES DO NOT SCALE TOLERANCES PER ENG. STD. M-282 WELDING PER ENG. STD. M-30 REF. DWG.		COMPR., TURBO 255 RIVERHAWK CPLG. MULTI-STAGE		MATERIAL TYPE _____ ENG. STD. _____ PART NO. _____ CUT SIZE _____	
NAME DR. A.W.OTTO APPR. B.L.KNAUB SCALE: N.T.S.	DATE 09-07-10 09-10-10	SIZE <b>D</b>	CAGE NO 66935	DRAWING NUMBER <b>381-17974-000</b>	
WT. = _____ LBS.		ORIG. NO. 381-17873D		SHEET 2 OF 3	

CS.2010.0J060251.COMPR.381-17974.SHT2

P.404

PART NO.	ITEM	QTY.	DESCRIPTION
001-179930	229	1	LAST STAGE EXIT PLATE
029-05873	230	1	INSERT PIN 3/8 X 3/4
029-14215	231	2	INSERT PIN 1/2 X 3-1/2
021-12318	232	4	12 POINT CAP SCREW 3/4 X 4
029-08449	233	14	INSERT PIN 1/2 X 2-1/2
021-05274	234	4	HELICAL SPRING LOCKWASHER 3/4
* 021-13837	235	4	VERTICAL JACK SCREW 1 X 4
001-06461A	236	1	WARNING LABEL
301-08247A	237	1	TAGGING INSTRUCTION
023-01536	238	3	COUPLING PIPE 3/4 NPT
023-14661	240	3	NIPPLE, PIPE 3/4 X 3
013-01678	241	.001	SEALER, THREADLOCKER 243
000-00000-000	9000	0	DRAWING

PART NO.	ITEM	QTY.	DESCRIPTION
△ 029-14036B	127	1	THRUST BEARING
029-23975	129	1	INSERT PIN 3/8 X 1
△ 001-16421B	131	2	OIL PUMP HOUSING GASKET, 1/64
△ 001-16422B	132	6	OIL PUMP HOUSING GASKET, 0.005
△ 001-16420C	133	1	CENTRIFUGAL OIL PUMP
△ 001-16957C	134	1	VOLUTE SEAL RING
△ 001-16414B	135	2	OIL PUMP HOUSING GASKET, 0.005
△ 001-16419C	136	1	REVERSE THRUST BEARING
029-07177	137	1	INSERT PIN, 1/4 X 3/8
△ 021-11629	138	1	12 POINT CAP SCREW 5/8 X 4
301-16415C	139	1	OIL PUMP HOUSING
021-31851	140	8	12 POINT CAP SCREW 3/4 X 7
△ 021-1410B	141	3	12 POINT CAP SCREW 1/4 X 1-1/2
△ 025-29379	142	1	AXIAL PROXIMITY PROBES 3300 NSV
001-16958C	143	1	PUMP COVER
021-18590	144	2	12 POINT CAP SCREW 3/8 X 4
025-09607	145	14	CABLE STRAP
△ 025-41695	149	2	DISCHARGE END DUAL FEEDTHROUGH
035-00793	150	1	AXIAL PROBE MARKER
035-00803	155	1	KEYPHASOR MARKER
△ 025-29386	156	1	KEYPHASOR
023-17899	159	1	ELBOW, 90 DEG. 1/8 NPTI X 1/8 NPTF
023-14661	164	1	PIPE NIPPLE
364-06554L	166	2	OIL ELIMINATOR
001-01846A003	167	1	ORIFICE PLUG
001-17997D	168	1	SUMP HOUSING
023-04053	169	2	PLUG, PIPE 3/4 SQ. HEAD
023-04019	170	1	PLUG, PIPE 1-1/4 SQ. HEAD
△ 001-05444A	171	1	COMPRESSOR END GASKET 1/32
△ 001-05445A	172	1	COMPRESSOR END GASKET 1/64
064-15948A	173	1	CENTRIFUGAL OIL PUMP CONNECTION
023-08061	174	1	ELBOW, 90 DEG. TUBE SIZE 2 X 2
001-16488B	175	1	JET PUMP BODY
△ 001-05446A	176	1	JET PUMP NOZZLE GASKET 1/16
076-00726B	177	1	JET PUMP NOZZLE
021-11141	178	8	12 POINT CAP SCREW 3/8 X 1-1/4
△ 001-17998C	179	2	SUMP COVER GASKET 1/16
301-17999C	180	1	OIL SUMP COVER
SEE NOTE 23	182	1	DATA NAMEPLATE
	183		
001-17424C	187	1	SHAFT SEAL COVER
△ 029-13766C012	188	1	SHAFT SEAL RING
064-30592A	189	1	SPRING RETAINING WASHER
029-13770B005	190	12	SHAFT SEAL SPRING
029-19175A	191	1	WARNING NAMEPLATE
364-30608B	192	1	SEAL RETAINING ASSEMBLY
021-13986	193	3	FLAT HEAD MACH. SCREW NO. 10 X 3/8
△ 028-16333	194	1	HORIZONTAL SPLIT GASKET, 1/32
029-13618B	195	1	PUBLICITY NAMEPLATE
001-05836C	196	1	OIL TRAP COVER
001-07262C	197	1	OIL TRAP COVER GASKET, 1/16
021-02751	198	20	HEX HEAD CAP SCREW 1/2 X 1-3/4
023-04053	199	1	PIPE PLUG, 3/4 SQ. HEAD
064-07951K	200	1	OIL TRAP SIGHT GLASS
001-05449A	201	1	OIL TRAP SIGHT GLASS GASKET, 1/16
021-01262	202	10	PLAIN WASHER, 5/16
021-01418	203	10	HEX HEAD CAP SCREW, 5/16 X 3/4
064-19603A	207	1	WELD FLANGE
* △ 001-07091	208	1	GASKET, 1/16
021-14289	209	4	12 POINT CAP SCREW 7/8 X 5
301-17889D	214	1	PRV ACCURATOR ASSEMBLY
013-02280	215	.001	SEALER, PST 567
△ 028-12200	216	3	"O" RING, 1-1/8 ID X 1/8 SECT
△ 001-03763A	217	1	PRV COVER GASKET, 1/16
△ 064-12758C005	218	1	GAS SEAL RING
△ 064-10195B	220	1	A1 SEAL RING
013-03056	224	.002	SEALER, 277
024-37331-001	226	1	ACCURATOR
301-155110007	227	1	DIFFUSER ENTRANCE VANE
064-340140005	228	8	DIFFUSER VANE

PART NO.	ITEM	QTY.	DESCRIPTION
301-17425B	1	1	COUPLING GUARD
△ 029-25871	2	1	RIVERHAWK COUPLING
021-13690	4	60	HEX SOCKET HEAD SCREW 1-1/8 X 4-1/2
021-13689	5	48	HEX SOCKET HEAD SCREW 1-1/8 X 4
021-11192	6	5	HEX HEAD CAP SCREW 1-1/8 X 4
021-08948	7	14	DRIVE SCREW NO.4 X 5/16 LG.
029-13187A	8	1	ROTATIONAL NAMEPLATE
301-18053D	9	1	PRV DEVICE
△ 001-05438A	10	2	COMPRESSOR END GASKET 1/16
301-17981D	11	1	CASING
021-13334	12	6	12 POINT CAP SCREW 1/2 X 1-1/4
021-11933	16	12	12 POINT CAP SCREW 1/2 X 1-1/2
001-15314D	17	1	PRV HOUSING
△ 001-05437B003	18	2	SHAFT SEAL GASKET, 1/16" THICK
△ 001-05437B002	19	2	SHAFT SEAL GASKET, 1/32" THICK
△ 001-05437B001	20	2	SHAFT SEAL GASKET, 1/64" THICK
001-18028D	21	1	BEARING HOUSING
021-15645	22	12	12 POINT CAP SCREW 7/8 X 4
△ 001-05454A	25	2	PRV SLEEVE GASKET, 1/16
△ 001-02453C	26	1	SHAFT SEAL COLLAR
△ 028-13705	27	2	O-RING, 4-1/4 ID X 3/16 SECT
029-04545	28	2	INSERT PIN 3/16 X 7/16
029-08213	29	1	RETAINING RING
029-05700	30	1	INSERT PIN 1/8 X 3/4
△ 064-28985C005	31	1	SLEEVE BEARING
064-11980D	33	1	PRV SLEEVE
023-04208	35	1	PIPE PLUG 3/4 NPT
* 064-14230A	37	4	GUIDE ROD
029-08503	39	1	RETAINING RING
029-08071L	40	1	UNIVERSAL SPRING
△ 025-29381	52	2	SUCTION RADIAL PROX. PROBE 3300 NSV
021-14613	53	16	TUBE CLAMP, 3/16 OD
021-03745	54	17	PN HEAD MACH. SCREW, NO.10-24 X 3/8
△ 025-41708	55	1	SUCTION DUAL FEEDTHROUGH
035-00800	56	2	HORIZONTAL PROBE MARKER
035-00814	57	2	VERTICAL PROBE MARKER
* 076-46261B	58	1	PROTECTIVE SLEEVE
* 076-46260A	59	1	HANDREL
001-02212A	60	1	EQUALIZING LINE ADAPTER
001-02213B	61	1	INTERNAL VENT TUBE
△ 064-12756C019	67	1	RETAINING RING
△ 064-16897D017	68	1	LABYRINTH SEAL RING
△ 064-16976	69	1	ANTI-ROTATION DISK
△ 064-16898D018	70	1	LABYRINTH SEAL RING
△ 064-18170C	78	1	SHAFT LABYRINTH
△ 301-17982E	79	1	ROTOR
301-08633D	80	1	DIFFUSER
△ 064-30119C029	94	1	BALANCE PISTON SEAL RING
029-04988	95	1	INSERT PIN 3/8 X 1-1/8
△ 064-30123C026	96	1	BALANCE PISTON SPRING WASHER
064-11565D029	97	1	BALANCE PISTON COVER
021-11190	98	16	HEX HEAD CAP SCREW 1/2 X 2
021-05271	99	32	HELICAL SPRING LOCKWASHER 1/2
021-19832	101	16	12 POINT CAPSCREW, 3/4 X 6-3/4
301-12622D001	102	1	PISTON RING HOUSING
029-09118A	103	1	STEP SEAL BEV. PISTON RING
029-08323	110	1	RETAINING RING
△ 029-08320C	111	1	A1 SEAL SPRING WASHER
001-02221D	112	1	SEAL RING HOUSING
△ 001-05702A	114	1	SEAL RING HOUSING GASKET, 1/32
021-11975A	115	16	12 POINT CAP SCREW 1/2 X 2-3/4
076-33882A	117	2	DISCH. SHAFT PROBE BRACKET
021-01379	118	4	HEX HEAD CAP SCREW, 1/4 X 3/4
021-05267	119	4	HELICAL SPRING LOCKWASHER, 1/4
△ 025-29380	120	2	DISCHARGE RADIAL PROX. PROBE 3300 NSV
* 076-46276B	121	1	PROTECTIVE SLEEVE
* 076-46275A	122	1	HANDREL
△ 064-32682B	124	1	SLEEVE BEARING
029-05700	125	1	INSERT PIN 1/8 X 3/4
029-03990	126	2	INSERT PIN 1/8 X 9/16

NOTES:  
 20. ASSEMBLE ALL PIPE THREADS THAT CROSS AN INTERNAL/EXTERNAL PRESSURE BOUNDARY WITH ITEM 224 (SEALER, 277). ASSEMBLE ALL OTHER PIPE THREADS WITH ITEM 215 (SEALER, PST 567). ALL PIPE THREADS ARE TO BE ASSEMBLED PER M-365.  
 21. △ INDICATES RECOMMENDED SPARE PARTS.  
 22. \* THESE ITEMS TO BE BOXED & SHIPPED WITH COMPR.  
 23. SEE SALES ORDER FOR DATA NAMEPLATE PART NUMBER.

YORK INTERNATIONAL CORPORATION  
 YORK, PA. 17405

REV. LEV.	DATE	REVISION RECORD	CHG. NO.	DR.	CK.	REV. LEV.	DATE	REVISION RECORD	CHG. NO.	DR.	CK.	REV. LEV.	DATE	REVISION RECORD	CHG. NO.	DR.	CK.
-		NEW	0910 3558														
A	09-22-10	DEL. ITEM 183; ITEM 7 QTY. WAS 18.	0910 3558	LCC	LCC												
B	0-26-10	ITEM 126 QTY WAS 1; ITEM 135 QTY WAS 1; ITEM 179 QTY WAS 1	0910 3609	DBG	BLK												
C	1-18-10	ITEM 169 QTY WAS 1	0910 3619	DBG	BLK												
D	2-17-10	SEE SHT 1 FOR REV	0910 3630	DBG	MS												

ALL PROPRIETARY RIGHTS IN THE SUBJECT MATTER HEREOF ARE RESERVED, AND NO PERMISSION IS GRANTED TO REPRODUCE THIS PRINT IN WHOLE OR IN PART, OR DISCLOSE ANY OF THE INFORMATION UPON IT TO OTHERS WITHOUT WRITTEN RELEASE BY YORK INTERNATIONAL CORPORATION.

DIMENSIONS ARE IN INCHES DO NOT SCALE TOLERANCES PER ENG. STD. M-262 WELDING PER ENG. STD. M-30 REF. DWG.

COMPR., TURBO 255 RIVERHAWK CPLG. MULTI-STAGE

MATERIAL TYPE \_\_\_\_\_ ENG. STD. \_\_\_\_\_ PART NO. \_\_\_\_\_ CUT SIZE \_\_\_\_\_

NAME DATE SIZE CAGE NO DRAWING NUMBER  
 DR. A.W.GITTO 09-07-10 D 66935 381-17974-000  
 APPR. B.L.KNAUB 09-10-10  
 SCALE: N.T.S.

WT. = \_\_\_\_\_ LBS. ORIG. NO. 381-17974D SHEET 3 OF 3

p405