

NOTE:
DIMENSIONS INDICATED WITH () ARE IN MILLIMETERS
ARE OTHERS ARE IN FEET AND/OR INCHES

YORK INTERNATIONAL
YORK, PA 17405

REV.	DATE	IC NO.	BY	CHK.	ENG.
1	18-JAN-2011	CR11-0271	JOB	JOB	
2	18-JAN-2011	CR11-0271	JOB	JOB	
3	18-JAN-2011	CR11-0271	JOB	JOB	
4	18-JAN-2011	CR11-0271	JOB	JOB	
5	18-JAN-2011	CR11-0271	JOB	JOB	

ITEMS	DATE	BY	CHK.	ENG.
1	18-JAN-2011	JOB	JOB	
2	18-JAN-2011	JOB	JOB	
3	18-JAN-2011	JOB	JOB	
4	18-JAN-2011	JOB	JOB	
5	18-JAN-2011	JOB	JOB	

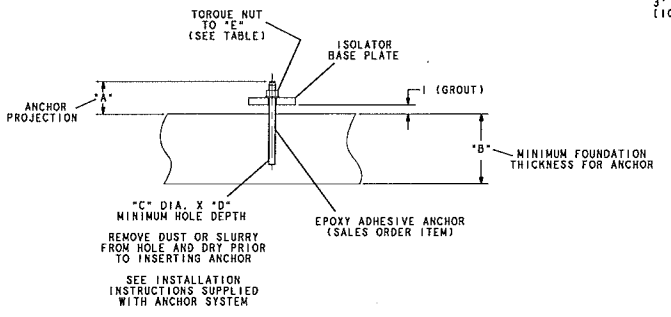
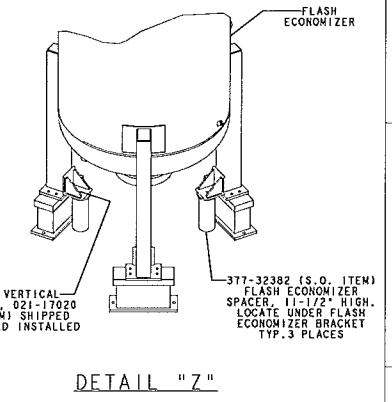
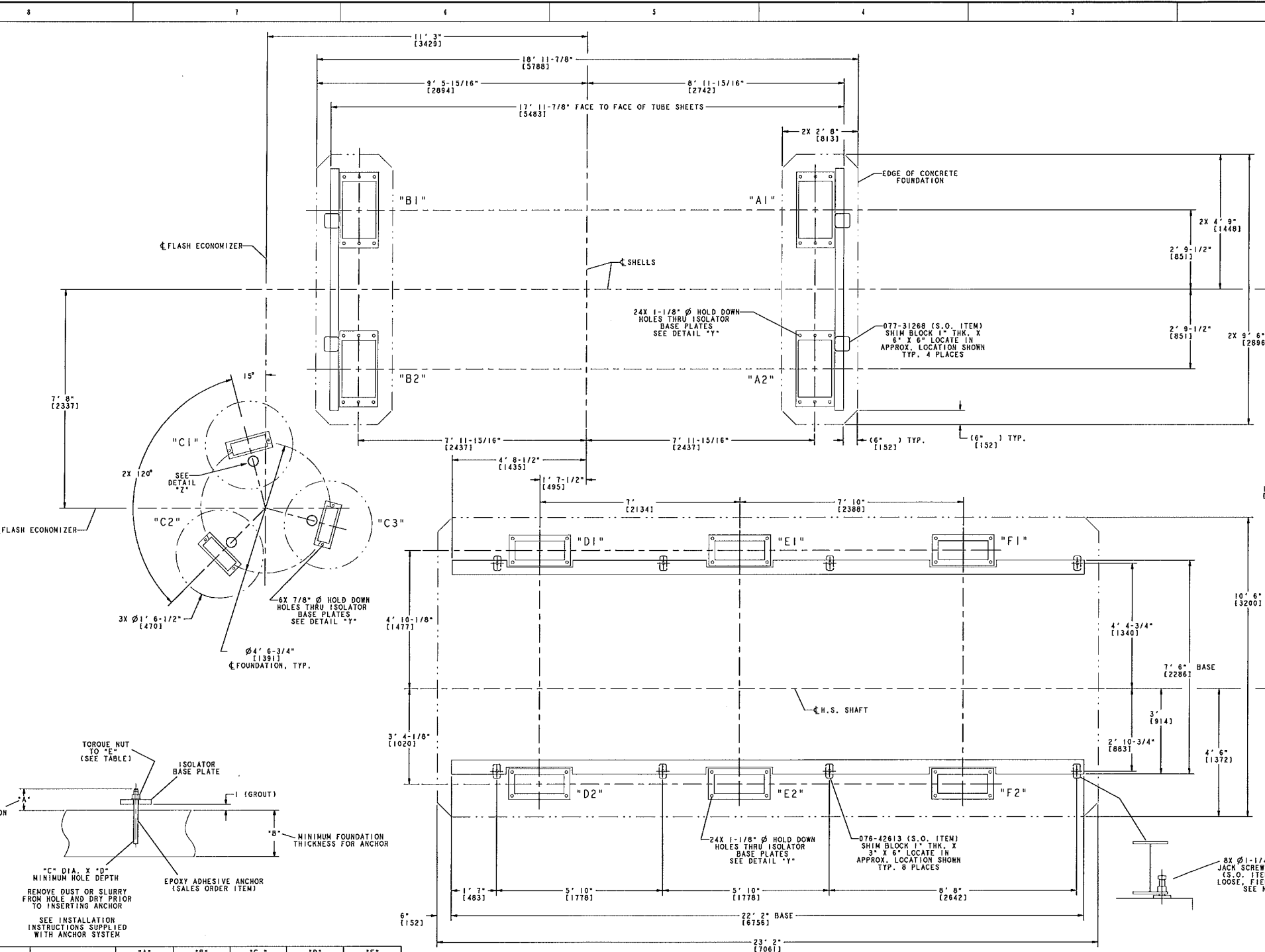
ALL DIMENSIONS ARE IN INCHES
UNLESS OTHERWISE SPECIFIED
DIMENSIONS ARE IN INCHES
UNLESS OTHERWISE SPECIFIED
DIMENSIONS ARE IN INCHES
UNLESS OTHERWISE SPECIFIED

DATE	BY	CHK.	ENG.	SCALE	PROJECT	SHEET
18-JAN-2011	JOB	JOB		1/4" = 1'-0"	66935	077-28145E
18-JAN-2011	JOB	JOB		1/4" = 1'-0"	66935	077-28145E
18-JAN-2011	JOB	JOB		1/4" = 1'-0"	66935	077-28145E
18-JAN-2011	JOB	JOB		1/4" = 1'-0"	66935	077-28145E
18-JAN-2011	JOB	JOB		1/4" = 1'-0"	66935	077-28145E

DATE	BY	CHK.	ENG.	SCALE	PROJECT	SHEET
18-JAN-2011	JOB	JOB		1/4" = 1'-0"	66935	077-28145E
18-JAN-2011	JOB	JOB		1/4" = 1'-0"	66935	077-28145E
18-JAN-2011	JOB	JOB		1/4" = 1'-0"	66935	077-28145E
18-JAN-2011	JOB	JOB		1/4" = 1'-0"	66935	077-28145E
18-JAN-2011	JOB	JOB		1/4" = 1'-0"	66935	077-28145E

APPROX. SERVICE RIGGING WEIGHTS		LBS.	(KG)
EVAPORATOR WATER BOX COVERS (EA.)	-----	6,000	2,722
CONDENSER WATER BOX COVERS (EA.)	-----	4,100	1,860
COMPRESSOR TOP HALF CASING	-----	7,000	3,175
COMPRESSOR ROTOR	-----	645	293
SUCTION LINE	-----	4,200	1,905
DISCHARGE LINE	-----	3,100	1,406

APPROX. OPERATING WEIGHTS		LBS.	(KG)
EVAPORATOR	-----	145,500	65,998
CONDENSER	-----	131,000	59,421
SHELL PIPING	-----	6,400	2,903
TOTAL SHELL PACKAGE INCL. WATER & REFRIG.	-----	282,900	128,323
COMPR.	-----	20,000	9,072
MOTOR	-----	26,800	12,156
SPEED INCREASER	-----	4,100	1,860
DRIVE BASE	-----	11,850	5,375
MISC.	-----	4,070	1,846
DRIVELINE PIPING	-----	3,980	1,805
TOTAL DRIVE PACKAGE	-----	78,800	35,743
FLASH ECONOMIZER	-----	5,300	2,404
OIL SEPARATOR (HORIZONTAL)	-----	250	113
FLASH ECONOMIZER PIPING	-----	1,350	612
TOTAL FLASH ECONOMIZER PACKAGE INCL. REFRIG.	-----	6,900	3,130
CONTROL PANEL	-----	500	227
APPROX. TOTAL SYSTEM WEIGHT	-----	369,100	167,423
REFRIG. CHARGE REQUIRED (INCL. IN TOTAL WEIGHTS)	-----	17,000	8,074



COMPONENT	ANCHOR BOLT SIZE	*A*	*B*	*C*	*D*	*E*
		INCHES	MM	INCHES	MM	INCHES
EVAPORATOR	1" DIA. X 12" LG.	4	102	10-1/4	260	1-1/8
DRIVELINE	1" DIA. X 12" LG.	4	102	10-1/4	260	1-1/8
FLASH ECONOMIZER	3/4" DIA. X 10" LG.	4	102	7-3/4	197	7/8

FLOOR PLAN

DETAIL "Y"

ISOLATORS

ISOLATOR MFG.	LOCATION	LOADING		BASE PLATE SIZE		MOUNTING
		LBS.	Kg	INCHES	MM	
VIBRATION MOUNTING AND CONTROLS INC.	*A1*			16" X 32"	406 X 813	A24WRJ-1E-71760N
	A2			16" X 32"	406 X 813	A24WRJ-1E-71760N
	B1			16" X 32"	406 X 813	A24WRJ-1E-78000N
	B2			16" X 32"	406 X 813	A24WRJ-1E-78000N
	C1			7" X 19"	178 X 483	VMA-42591A
	C2			7" X 19"	178 X 483	VMA-42591A
	C3			7" X 19"	178 X 483	VMA-42591A
	D1			13" X 26"	330 X 660	M9S-1E-18000
	D2			13" X 26"	330 X 660	M9S-1E-26910N
	E1			13" X 26"	330 X 660	M9S-1E-9000
	E2			13" X 26"	330 X 660	M9S-1E-9000
	F1			13" X 26"	330 X 660	M9S-1E-18000
	F2			13" X 26"	330 X 660	M9S-1E-18000

- FOUNDATION NOTES:**
121. YORK SUPPLIED ANCHOR BOLT SELECTIONS ARE BASED ON USING 4000 PSI CONCRETE COMPRESSIVE STRENGTH.
 122. CONCRETE FOUNDATION IS BY OTHERS, YORK RECOMMENDED MINIMUMS SHOWN ALLOW FOR MINIMUM DISTANCE FROM FOUNDATION OUTLINES TO STRUCTURES AND TO STANDARD YORK ANCHOR BOLTS, WHEN PROVIDED.
 123. BEVELED CORNERS AS SHOWN OR RADIUS IS RECOMMENDED TO AVOID CONCRETE STRESS CRACKING.
 124. ALL APPLICABLE STATE, COUNTY, CITY AND LOCAL LAWS, RULES AND REGULATIONS PERTAINING TO CONSTRUCTION, INSTALLATION AND INSPECTION SHALL BE CONFORMED TO. ANCHOR BOLT MANUFACTURERS INFORMATION MUST BE FOLLOWED AND TAKES PRECEDENCE EXCEPT WHERE YORK MINIMUMS OR REGULATIONS, ETC. (ABOVE) ARE GREATER.

NOTE: DIMENSIONS INDICATED THIS [] ARE IN MILLIMETERS ARE OTHERS ARE IN FEET AND/OR INCHES

YORK INTERNATIONAL CORPORATION
YORK, PA 17405

REVISIONS: 1. 10-1-81, 2. 10-1-81, 3. 10-1-81, 4. 10-1-81, 5. 10-1-81, 6. 10-1-81, 7. 10-1-81, 8. 10-1-81, 9. 10-1-81, 10. 10-1-81

DATE: 10-1-81
SCALE: 1/8" = 1'-0"

PROJECT: 66935
SHEET: 3 OF 3

REV.	DATE	BY	CHK.	ENG.	DESCRIPTION
1	10-1-81	J.B.	J.B.	J.B.	ISSUED FOR CONSTRUCTION
2	10-1-81	J.B.	J.B.	J.B.	REVISED FOR CONSTRUCTION

SCREW SIZE INCHES	TIGHTENING TORQUE	
	FT.-LBS. MIN/MAX	NEWTON-METERS MIN/MAX
5/8-11	70/95	95/29
3/4-10	125/165	169/224
1-1/4-7	375/513	508/699

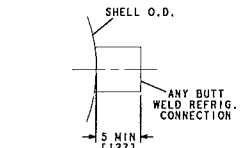
NOTES:
131. SCREWS ARE TO BE INSTALLED DRY.

**ISOLATOR TO
COMPONENT SUPPORT
BOLTING TORQUE**

COMPONENT AND LOCATION	LBS.	NEWTONS
MOTOR - INBOARD / BOLT COMPRESSION	1788	7957
MOTOR - OUTBOARD / BOLT TENSION	1788	7957
GEAR - INBOARD / BOLT COMPRESSION	1788	7957
GEAR - OUTBOARD / BOLT TENSION	1788	7957
COMPRESSOR - INBOARD / BOLT COMPRESSION	1788	7957
COMPRESSOR - OUTBOARD / BOLT TENSION	1788	7957

NOTES / ASSUMPTIONS
201. STRUCTURAL STEEL BASE ASSUMED TO BE RIGID.
202. ACCELERATION OF MOTOR ROTOR MASS IGNORED (CONSERVATIVE).
203. DYNAMIC LOADS BASED ON 5000 HP, 1780 RPM MOTOR.
FL TORQUE = 14,662 LB-FT, START TORQUE 90%
204. MOTOR STARTING METHOD: SOFT START USING SSS
(SOLID STATE STARTER).

DYNAMIC LOADS



MINIMUM DISTANCE REQUIRED FROM
O.D. OF SHELL TO ANY BUTT WELD
REFRIGERANT CONNECTION CUTOFF
UNLESS NOTED OTHERWISE

DETAIL "L"

- NOTES TO ERECTING ENGINEER AND PIPING CONTRACTOR:
50. PIPING CONNECTIONS TO THE WATER, LIQUID OR OIL NOZZLES MUST BE PROPERLY BRACED AND SUPPORTED TO PREVENT ANY UNNECESSARY STRAIN ON THE NOZZLES. THE WATER NOZZLES ARE DESIGNED FOR MAXIMUM LOADS UPON THE FOLLOWING RESULTANTS:
FR (LBS) = 100 X NOMINAL PIPE DIAMETER (INCHES)
MR (LBS-FT) = 125 X NOMINAL PIPE DIAMETER (INCHES)
USE SUITABLE TYPE PIPE HANGERS. USE EXPANSION JOINTS, FLEXIBLE CONNECTORS OR LOOPS AS REQUIRED TO MINIMIZE NOISE OR VIBRATION TRANSMISSION TO BUILDING. IF OPTIONAL SPRING ISOLATORS ARE PROVIDED ON THE CHILLER, FLEXIBLE CONNECTIONS AND/OR SPRING HANGER PIPE SUPPORTS MUST BE USED IN THE CONNECTING PIPE. COMPANION FLANGES, GASKETS, BOLTS AND NUTS AT WATER, LIQUID, STEAM OR OIL NOZZLES ARE NOT TO YOK.
 51. HEAT CONDUCTIVE COMPOUND, SUPPLIED ON MISC. MAT'L. KIT, TO BE INSTALLED IN THERMOMETER WELLS AFTER ERECTION.
 52. VENT AND DRAIN PIPING NOT BY YORK.
 53. PIPING CONTRACTOR TO INSTALL SUITABLY SIZED COUPLINGS IN EVAPORATOR & CONDENSER WATER OUTLET PIPING NEAR HEAT EXCHANGERS FOR WATER FLOW SWITCH WHEN REQ'D.
 54. A CHILLED WATER STRAINER MUST BE PROVIDED BETWEEN THE PUMP OR LINE HEADER AND THE CHILLER FOR ALL PROJECTS WITH LEAVING CHILLED WATER TEMPERATURES OF 38°F (3.2°C) AND BELOW. TUBES MUST BE KEPT FREE OF ANY BLOCKAGES TO MINIMIZE CHANCE OF TUBE FREEZING DAMAGE.
 55. CHILLED WATER AND CONDENSER WATER TEMPERATURE TRANSMITTERS AND 3/4" NPTI THERMOWELLS ARE PROVIDED BY YORK WITH THE CHILLER CONTROL CENTER. 3/4" COUPLINGS FOR THESE SENSORS MUST BE SUPPLIED IN THE CONNECTING INLET AND OUTLET WATER PIPING AT LEAST SIX PIPE DIAMETERS FROM THE WATER BOX. ADDITIONAL LOCAL INLET AND OUTLET THERMOMETERS AND PRESSURE GAUGES ARE RECOMMENDED TO BE PROVIDED AND INSTALLED IN THE WATER PIPING NEAR HEAT EXCHANGER BY OTHERS. LOCAL THERMOMETERS OR ADDITIONAL TEST WELLS WITH 10.25" INSERTION DEPTH SUITABLE FOR USE WITH 1/4" O.D. RTD SENSORS MUST BE AVAILABLE IN THE WATER PIPING AT LEAST SIX DIAMETERS FROM THE CHILLER WHICH MAY BE USED TEMPORARILY DURING FIELD PERFORMANCE TESTING.
 56. PNEUMATIC CONTROL AIR SUPPLY BY OTHERS SHALL MEET ISA-ST.3 QUALITY STANDARD FOR INSTRUMENT AIR.
 57. VERIFY BUILDING DIMENSIONS PERTAINING TO EQUIPMENT LOCATION. INSPECT ALL EQUIPMENT BEFORE ERECTING. USE ONLY CERTIFIED OR FINAL CONSTRUCTION PRINTS.
 58. REMOVE TESTING AND SHIPPING MATERIALS PER ERECTING INSTRUCTIONS. CARE MUST BE TAKEN TO PREVENT DIRT AND MOISTURE FROM GETTING INTO THE REFRIGERANT SYSTEM.
 59. THE ENTIRE REFRIGERANT CIRCUIT MUST BE FREE OF DIRT, SCALE AND MOISTURE AND BE PRESSURE AND VACUUM TESTED AS SPECIFIED IN ERECTING INSTRUCTIONS BEFORE CHARGING SYSTEM WITH REFRIGERANT.
 60. ALL SHELLS ARE INSPECTED AND STAMPED IN ACCORDANCE WITH A.S.M.E. PRESSURE VESSEL CODE SECTION VIII DIVISION 1. CONSTRUCTED & TESTED IN ACCORDANCE WITH ASHRAE STD. 15 SAFETY CODE.
 61. ALL FINISH PAINTING, TOUCHING UP OR SPECIAL PAINTING TO BE DONE IN FIELD UNLESS OTHERWISE NOTED.
 62. ALL INSULATION OF SHELLS AND PIPE LINES TO BE DONE IN FIELD PER RECOMMENDATIONS OF THERMAL AND ACOUSTICAL INSULATION DRAWINGS (SEE YORK REF. DWG. CHART).
 63. FOR MISC. MATERIAL FOR FIELD ASSEMBLY, SEE KIT DWG. (SEE YORK REF. DWG. CHART). ITEMS ARE INDICATED THUS \odot .
 64. WHEN ERECTING SHELLS IN FIELD, FEET TO BE LEVEL TO WITHIN 1/4"
USE SPACERS PROVIDED FOR LEVELING. USE SHIMS AND PLACE ON SPACERS FOR FINAL LEVELING (SHIMS NOT PROVIDED).
 65. ALL SHELLS AND INTERCONNECTING PIPING ARE SHIPPED LOOSE FOR FIELD ASSEMBLY. REMOVE TEST CLOSURES, AS APPLICABLE, BEFORE PIPING.
 66. X DENOTES FIELD WELDED JOINTS (USE BACK-UP WELDING RINGS AT ALL FIELD BUTT WELDED JOINTS). IN LIEU OF USING BACK-UP WELDING RINGS, THE ROOT PASS MUST BE MIG OR TIG WELDING TO PREVENT WELDING SLAG ENTERING THE PIPING SYSTEM.
FIELD WELDED JOINTS INDICATED XI OR XI DENOTES END OF PIPE SECTION MUST BE CUT TO LENGTH AND SCARFED FOR WELDING. SEE DETAIL "L" FOR MIN. SHELL REFRIGERANT CONNECTION AFTER CUT-OFF.
 67. CAUTION: COMPRESSOR AND SHELLS ARE SHIPPED WITH 4 TO 10 PSIG NITROGEN HOLDING CHARGE.
 68. USE ONLY YORK TYPE "J" ESTER BASED SYNTHETIC OIL IN REFRIGERANT-134a UNITS.

- NOTES TO ERECTING ENGINEER AND PIPING CONTRACTOR (CONT.):
69. THE REFRIGERANT SIDE RELIEF CONNECTIONS SHALL BE VENTED OUTSIDE THE BUILDING BY MEANS OF A PROPERLY SIZED LINE IN ACCORDANCE WITH ANSI/ASHRAE STD. 15 & OTHER APPLICABLE CODES FOR PERSONNEL SAFETY. WATER SIDE PRESSURE RELIEF VALVES ARE TO BE PROVIDED BY OTHERS IN THE WATER PIPING BETWEEN THE CHILLER AND ANY ISOLATION VALVES FOR BOTH EVAPORATOR AND CONDENSER. THE VENT PIPING MUST BE PROPERLY SUPPORTED TO PREVENT EXTERNAL LOADS ON THE RELIEF VALVES.
 70. ON NON-FABRICATED MAJOR PIPING, IT IS VERY IMPORTANT FOR THE FIELD ERECTING CONTRACTOR TO COMMERCIALY BLAST CLEAN ALL INSIDE SURFACES.
 71. PARTIAL PREFAB. PIPE: CAPS OR COVERS ARE PROVIDED BY YORK TO PROVIDE REASONABLE PROTECTION OF INTERNALLY BLASTED SURFACES. CAUTION: BRUSH OFF BLASTING MAY BE REQUIRED PRIOR TO FIELD ASSEMBLY.
 72. PROPER HANDLING AND STORAGE OF PREFAB PIPING AT THE JOB SITE IS ESSENTIAL IN PROVIDING PROPER PROTECTION FOR THE INTERNALLY BLASTED SURFACES. PIPING SHOULD BE UNLOADED BY OVERHEAD LIFTING DEVICES. CAUTION: DO NOT DRAG OR DAMAGE TO CAPS MAY OCCUR.
 73. PREFAB PIPING SHOULD NOT BE STORED OUTDOORS. IF STORED OUTSIDE, THE PIPING MUST BE COVERED WITH A WATERPROOF TARP, AND NOT DIRECTLY EXPOSED TO THE WEATHER. PIPE MUST NOT BE STOOD ON END. CAUTION: ANY AND ALL DAMAGE TO CAPS OR CLOSURES MUST BE REPAIRED IMMEDIATELY. CONTACT YORK SERVICE FOR INSTRUCTIONS.
 74. ALL REFRIGERANT PIPING SHALL CONFORM TO THE REQUIREMENTS OF ASME B31.5, REFRIGERANT PIPING, FOR MATERIALS, DESIGN, FABRICATION, ASSEMBLY, ERECTION, TEST AND INSPECTION.
 75. DESIGN, CONSTRUCTION, INSTALLATION, OPERATION AND INSPECTION OF THE SYSTEM SHALL CONFORM TO ASHRAE STD. 15, SAFETY CODE FOR MECHANICAL REFRIGERATION.
 76. ALL APPLICABLE STATE, COUNTY, CITY AND LOCAL LAWS, RULES AND REGULATIONS PERTAINING TO CONSTRUCTION, INSTALLATION AND INSPECTION SHALL ALSO BE CONFORMED TO.
 77. CONTROL PANEL MAY BE LOCATED SUCH THAT THE TOTAL ACTUAL LENGTH OF INDIVIDUAL CONTROL PIPING RUNS DO NOT EXCEED 50 FT.
 78. REFER TO SYSTEM PIPING KIT DWG. FOR DETAILS OF PRESSURE AND LEAK TESTING (SEE YORK REF. DWG. CHART).
 79. SHIM STOCK ROLL .001" THK. SHIPS WITH MISC. MAT'L. FOR USE IN FINAL DRIVELINE ALIGNMENT (S.O. ITEM).
 80. THE ENTIRE WATER AND OIL CIRCUITS MUST BE FREE OF DIRT, SCALE AND MOISTURE AND BE PRESSURE AND VACUUM TESTED AS SPECIFIED IN ERECTING INSTRUCTIONS BEFORE CHARGING SYSTEM.
 81. WHEN RIGGING THE DRIVE BASE INTO POSITION, LEVEL AND IF NECESSARY STRAIGHTEN THE BASE WITH SHIMS, USING THE MACHINED REFERENCE TARGET PADS ON THE TOP OF THE BASE. DEVIATION AT EACH BASE TARGET, IS STAMPED ON THE TOP OF THE TARGET. REFER TO FORM 160-72-PA13.
USE JACKING SCREWS AND SPACERS PROVIDED FOR LEVELING. USE SLOTTED SHIMS AND PLACE AROUND JACK SCREWS OR SHIM ON BOTH SIDES OF JACK SCREWS (SHIMS NOT PROVIDED).
 82. WHEN SYSTEM IS TO BE ERECTED ON SPRING ISOLATORS PER YORK INSTRUCTIONS, INSTALL 3" X 6" AND 6" X 6" SHIMS AND 11-1/2" HIGH SPACERS IN LOCATIONS SHOWN ON FLOOR LOADING DIAGRAM WHEN INSTALLING EQUIPMENT. ADJUST SPRING ISOLATORS TO JUST RAISE THE EQUIPMENT OFF THE SHIMS AND SPACERS WITH UNIT FULL OF WATER AND REFRIGERANT. MAINTAIN TARGET PAD REFERENCE LEVEL AS DESCRIBED, THEN REMOVE SHIMS. REFER TO YORK FORMS 160-71-N1 AND 160-71-N1-2.
 83. ASSEMBLE COUPLING AND ALIGN SHAFTS AS REQ'D. IN FORM 160-71-N2. WHEN RIVERHARK COUPLING IS USED, ASSEMBLE COUPLING PER RIVERHARK INSTRUCTIONS. USE HORIZONTAL JACKING SCREWS TO SECURE COMPRESSOR AND MOTOR AND BOWELS TO SECURE GEAR AS SHOWN IN MISALIGNMENT DETAIL AFTER HOT ALIGNMENT CHECK.
 84. SPARE SIGHTS AND O-RING SEALS, SUPPLIED ON MISC. MAT'L. KIT, CAN BE USED AT SUCTION LINE, OIL SEPARATOR OR FLASH ECONOMIZER.
 85. WHEN MOUNTING GEAR AND/OR DRIVER LOW SPEED COUPLING HUB, THE FULL HEIGHT OF THE SHAFT KEYS MUST BE NO LONGER THAN THE COUPLING HUB. REMAINING EXPOSED KEY LENGTH MUST BE STEPPED DOWN TO MATCH SHAFT DIAMETER. FAILURE TO STEP KEY COULD RESULT IN UNBALANCE AND VIBRATION PROBLEMS.
 86. REFER TO BOLT TORQUE INSTRUCTION DRAWING FOR ALL FLANGE BOLT TORQUE REQUIREMENTS.
 87. TUBE PULL SPACE REQUIRED AT ONE END ONLY. MAINTAIN 4 FEET MINIMUM TUBE SERVICE SPACE AT OTHER END. IF HINGED OR DAVIT WATERBOX COVERS ARE SUPPLIED MAINTAIN A MAXIMUM 3 FEET SWING SPACE.

YORK REFERENCE DRAWINGS

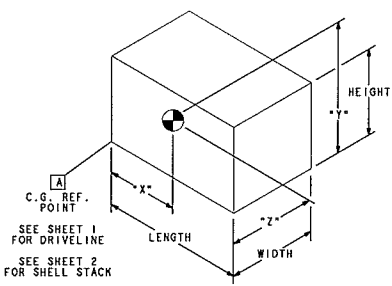
DWG. NO.	DESCRIPTION	DWG. NO.	DESCRIPTION
077-25017-000	COMPONENTS RIGGING	077-31932-004	PUMP/OUT UNIT OUTLINE
077-19889-000	BOLT TORQUE INSTRUCTION	023-20390-007	PUMP/OUT RELIEF PIPING KIT
077-32386-000	DESIGN LOAD CONDITIONS	023-20770-004	PUMP/OUT TO CHILLER(S) PIPING KIT
077-32079-000	UNIT, DRIVE LINE	077-32360-000	TRANSFER UNIT OUTLINE
023-25228-001	FIELD MISC. MAT'L. KIT	077-32361-000	TRANSFER UNIT WIRING DIAG.
023-25214-002	SYSTEM PIPING KIT	077-32071-000	WIRING DIAGRAM
023-25214-003	KIT, VALVES (CONTROL)	077-32073-000	FIELD WIRING CONN'S
076-98761-000	THERMAL INSULATION	077-31584-000	GAUGE AND CONTROL PIPING
076-97358-000	ACOUSTICAL INSULATION	081-17974-000	COMPR. ERECTING
076-78525-000	FLOW DIAG. LEGEND	081-17944-000	COMPR. LUBE OIL FLOW DIAG.
077-31585-000	REFRIG. & WATER FLOW DIAG.	077-25857-000	INSTRUCTIONS, PACKAGING DRIVE LINE

SHIPPING DIMENSIONS

COMPONENT	HEIGHT		WIDTH		LENGTH		SHIPPING WEIGHT	
	INCHES	MM	INCHES	MM	INCHES	MM	LBS.	Kg.
EVAPORATOR	9'-10"	2,997	8'-10"	2,692	27'-6"	8382	105,800	47,991
CONDENSER	9'-2"	2,790	8'-9"	2,667	26'-4"	8,077	95,300	43,228
FLASH ECONOMIZER	5'-0"	1,524	4'-6"	1,372	10'-5"	3,175	3,800	1,724
DRIVE LINE	10'-5"	3,175	11'-6"	3,505	19'-8"	5,994	63,000	28,577
MISCELLANEOUS	---	---	---	---	---	---	20,000	9,072

CENTER OF GRAVITIES

COMPONENT	X"		Y"		Z"	
	INCHES	MM	INCHES	MM	INCHES	MM
EVAPORATOR	9'-0"	2,743	5'-0"	1,524	4'-3"	1,295
CONDENSER	7'-10"	2,388	4'-6"	1,372	3'-11"	1,194
FLASH ECONOMIZER	---	---	---	---	---	---
DRIVE LINE	9'-11"	3,023	4'-9"	1,448	3'-9"	1,137

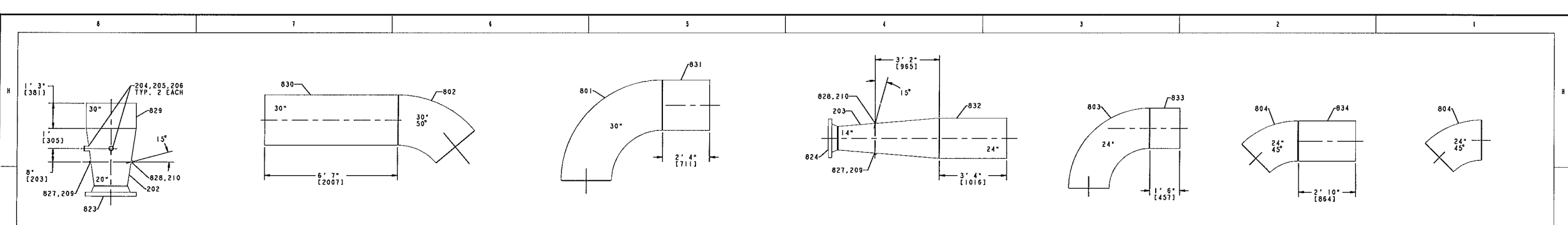


NOTES:
111. FOR LIFTING SEE COMPONENT RIGGING DWG. 077-25017-000.

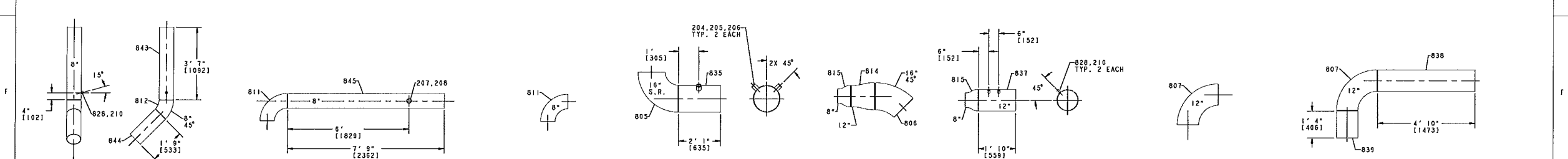
DETAIL "W"
COMPONENT SHIPPING DIMENSIONS AND CG'S

NOTE: DIMENSIONS INDICATED THUS () ARE IN MILLIMETERS ARE OTHERS ARE IN FEET AND/OR INCHES

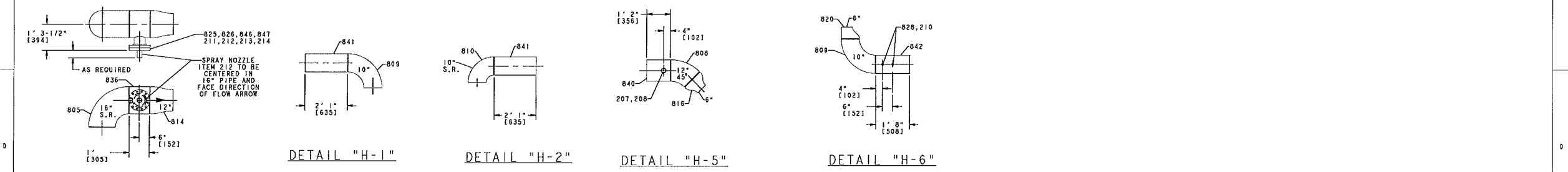
REV. DATE EC. NO. DL. CHG. ENG.	ITEM 004, 016, 026, 030, 034; DETAIL "W-S"; REORIENTED TO SHOW COUPLING ITEM 026	FILE PROPRIETARY RIGHTS IN THIS WORK ARE RESERVED BY YORK INTERNATIONAL CORPORATION. NO PART OF THIS PUBLICATION IS TO BE REPRODUCED OR TRANSMITTED IN ANY FORM OR BY ANY MEANS, ELECTRONIC OR MECHANICAL, INCLUDING PHOTOCOPYING, RECORDING, OR BY ANY INFORMATION STORAGE AND RETRIEVAL SYSTEM, WITHOUT PERMISSION IN WRITING FROM YORK INTERNATIONAL CORPORATION.	YORK INTERNATIONAL CORPORATION TORK, PA 17405
REV. 0 15-JAN-2011 0011-0021 JSD JSD			
REV. 1 01-FEB-2011 0011-0021 JSD JSD			
REV. 2 01-FEB-2011 0011-0021 JSD JSD			
REV. 3 01-FEB-2011 0011-0021 JSD JSD			
REV. 4 01-FEB-2011 0011-0021 JSD JSD			
REV. 5 01-FEB-2011 0011-0021 JSD JSD			
REV. 6 01-FEB-2011 0011-0021 JSD JSD			
REV. 7 01-FEB-2011 0011-0021 JSD JSD			
REV. 8 01-FEB-2011 0011-0021 JSD JSD			
REV. 9 01-FEB-2011 0011-0021 JSD JSD			
REV. 10 01-FEB-2011 0011-0021 JSD JSD			
REV. 11 01-FEB-2011 0011-0021 JSD JSD			
REV. 12 01-FEB-2011 0011-0021 JSD JSD			
REV. 13 01-FEB-2011 0011-0021 JSD JSD			
REV. 14 01-FEB-2011 0011-0021 JSD JSD			
REV. 15 01-FEB-2011 0011-0021 JSD JSD			
REV. 16 01-FEB-2011 0011-0021 JSD JSD			
REV. 17 01-FEB-2011 0011-0021 JSD JSD			
REV. 18 01-FEB-2011 0011-0021 JSD JSD			
REV. 19 01-FEB-2011 0011-0021 JSD JSD			
REV. 20 01-FEB-2011 0011-0021 JSD JSD			
REV. 21 01-FEB-2011 0011-0021 JSD JSD			
REV. 22 01-FEB-2011 0011-0021 JSD JSD			
REV. 23 01-FEB-2011 0011-0021 JSD JSD			
REV. 24 01-FEB-2011 0011-0021 JSD JSD			
REV. 25 01-FEB-2011 0011-0021 JSD JSD			
REV. 26 01-FEB-2011 0011-0021 JSD JSD			
REV. 27 01-FEB-2011 0011-0021 JSD JSD			
REV. 28 01-FEB-2011 0011-0021 JSD JSD			
REV. 29 01-FEB-2011 0011-0021 JSD JSD			
REV. 30 01-FEB-2011 0011-0021 JSD JSD			
REV. 31 01-FEB-2011 0011-0021 JSD JSD			
REV. 32 01-FEB-2011 0011-0021 JSD JSD			
REV. 33 01-FEB-2011 0011-0021 JSD JSD			
REV. 34 01-FEB-2011 0011-0021 JSD JSD			
REV. 35 01-FEB-2011 0011-0021 JSD JSD			
REV. 36 01-FEB-2011 0011-0021 JSD JSD			
REV. 37 01-FEB-2011 0011-0021 JSD JSD			
REV. 38 01-FEB-2011 0011-0021 JSD JSD			
REV. 39 01-FEB-2011 0011-0021 JSD JSD			
REV. 40 01-FEB-2011 0011-0021 JSD JSD			
REV. 41 01-FEB-2011 0011-0021 JSD JSD			
REV. 42 01-FEB-2011 0011-0021 JSD JSD			
REV. 43 01-FEB-2011 0011-0021 JSD JSD			
REV. 44 01-FEB-2011 0011-0021 JSD JSD			
REV. 45 01-FEB-2011 0011-0021 JSD JSD			
REV. 46 01-FEB-2011 0011-0021 JSD JSD			
REV. 47 01-FEB-2011 0011-0021 JSD JSD			
REV. 48 01-FEB-2011 0011-0021 JSD JSD			
REV. 49 01-FEB-2011 0011-0021 JSD JSD			
REV. 50 01-FEB-2011 0011-0021 JSD JSD			
REV. 51 01-FEB-2011 0011-0021 JSD JSD			
REV. 52 01-FEB-2011 0011-0021 JSD JSD			
REV. 53 01-FEB-2011 0011-0021 JSD JSD			
REV. 54 01-FEB-2011 0011-0021 JSD JSD			
REV. 55 01-FEB-2011 0011-0021 JSD JSD			
REV. 56 01-FEB-2011 0011-0021 JSD JSD			
REV. 57 01-FEB-2011 0011-0021 JSD JSD			
REV. 58 01-FEB-2011 0011-0021 JSD JSD			
REV. 59 01-FEB-2011 0011-0021 JSD JSD			
REV. 60 01-FEB-2011 0011-0021 JSD JSD			
REV. 61 01-FEB-2011 0011-0021 JSD JSD			
REV. 62 01-FEB-2011 0011-0021 JSD JSD			
REV. 63 01-FEB-2011 0011-0021 JSD JSD			
REV. 64 01-FEB-2011 0011-0021 JSD JSD			
REV. 65 01-FEB-2011 0011-0021 JSD JSD			
REV. 66 01-FEB-2011 0011-0021 JSD JSD			
REV. 67 01-FEB-2011 0011-0021 JSD JSD			
REV. 68 01-FEB-2011 0011-0021 JSD JSD			
REV. 69 01-FEB-2011 0011-0021 JSD JSD			
REV. 70 01-FEB-2011 0011-0021 JSD JSD			
REV. 71 01-FEB-2011 0011-0021 JSD JSD			
REV. 72 01-FEB-2011 0011-0021 JSD JSD			
REV. 73 01-FEB-2011 0011-0021 JSD JSD			
REV. 74 01-FEB-2011 0011-0021 JSD JSD			
REV. 75 01-FEB-2011 0011-0021 JSD JSD			
REV. 76 01-FEB-2011 0011-0021 JSD JSD			
REV. 77 01-FEB-2011 0011-0021 JSD JSD			
REV. 78 01-FEB-2011 0011-0021 JSD JSD			
REV. 79 01-FEB-2011 0011-0021 JSD JSD			
REV. 80 01-FEB-2011 0011-0021 JSD JSD			
REV. 81 01-FEB-2011 0011-0021 JSD JSD			
REV. 82 01-FEB-2011 0011-0021 JSD JSD			
REV. 83 01-FEB-2011 0011-0021 JSD JSD			
REV. 84 01-FEB-2011 0011-0021 JSD JSD			
REV. 85 01-FEB-2011 0011-0021 JSD JSD			
REV. 86 01-FEB-2011 0011-0021 JSD JSD			
REV. 87 01-FEB-2011 0011-0021 JSD JSD			
REV. 88 01-FEB-2011 0011-0021 JSD JSD			
REV. 89 01-FEB-2011 0011-0021 JSD JSD			
REV. 90 01-FEB-2011 0011-0021 JSD JSD			
REV. 91 01-FEB-2011 0011-0021 JSD JSD			
REV. 92 01-FEB-2011 0011-0021 JSD JSD			
REV. 93 01-FEB-2011 0011-0021 JSD JSD			
REV. 94 01-FEB-2011 0011-0021 JSD JSD			
REV. 95 01-FEB-2011 0011-0021 JSD JSD			
REV. 96 01-FEB-2011 0011-0021 JSD JSD			
REV. 97 01-FEB-2011 0011-0021 JSD JSD			
REV. 98 01-FEB-2011 0011-0021 JSD JSD			
REV. 99 01-FEB-2011 0011-0021 JSD JSD			
REV. 100 01-FEB-2011 0011-0021 JSD JSD			



DETAIL "C-1" DETAIL "C-2" DETAIL "C-3" DETAIL "D-1" DETAIL "D-2" DETAIL "D-3" DETAIL "D-4"

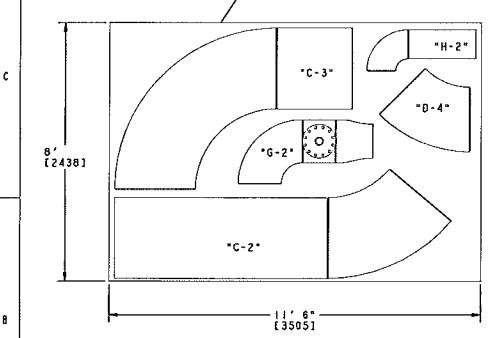


DETAIL "E-1" DETAIL "E-2" DETAIL "E-3" DETAIL "F-1" DETAIL "F-2" DETAIL "F-3" DETAIL "F-4" DETAIL "G-1"

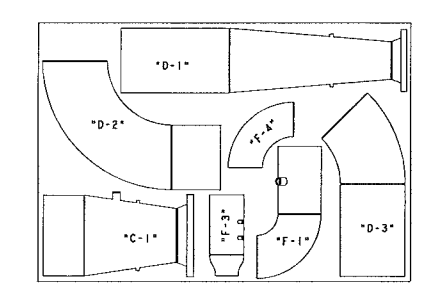


DETAIL "G-2" DETAIL "H-1" DETAIL "H-2" DETAIL "H-5" DETAIL "H-6"

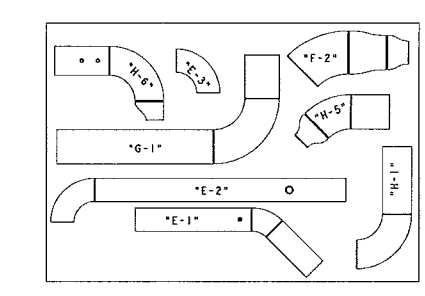
WOODEN SHIPPING SKID
YORK PART NO. 030-70182
APPROX. DRY WEIGHT = 1460 LBS.



SKID #1 CONSISTING OF:
DETAIL "C-2"
DETAIL "C-3"
DETAIL "D-4"
DETAIL "G-2"
DETAIL "H-2"
WEIGHT OF PIPE ASSEMBLIES LESS SKID 3,900 LBS.



SKID #2 CONSISTING OF:
DETAIL "C-1"
DETAIL "D-2"
DETAIL "D-3"
DETAIL "F-1"
DETAIL "F-4"
WEIGHT OF PIPE ASSEMBLIES LESS SKID 3,900 LBS.



SKID #3 CONSISTING OF:
DETAIL "E-1"
DETAIL "E-2"
DETAIL "E-3"
DETAIL "F-2"
DETAIL "F-3"
DETAIL "F-4"
DETAIL "G-1"
DETAIL "H-1"
DETAIL "H-5"
DETAIL "H-6"
WEIGHT OF PIPE ASSEMBLIES LESS SKID 1,700 LBS.

- NOTES:**
- PIPE ASSEMBLIES FABRICATED BY YORK AND SHIPPED LOOSE FOR FIELD ASSEMBLY.
 - FLANGE BOLT HOLES SHALL EQUALLY STRADDLE C/S.
 - FABRICATE AND INSPECT EACH ASSEMBLY. SEE YORK DRAWING 099-02818C FOR APPROVED WELDING MATERIAL AND PROCEDURES. NOTE: BACK-UP RINGS ARE NOT PERMITTED UNLESS NOTED OTHERWISE.
 - SEE YORK DRAWING 077-10003 FOR SHIPPING PREP. INSTRUCTIONS FOR PARTIAL PREFAB PIPE ASSEMBLIES.
 - ITEMS SHOWN THUS 201 APPEAR ON B.M. 377-32303-002.
 - ITEMS SHOWN THUS 801 APPEAR ON PIPING KIT 023-25220.
 - SECURE PRE-FAB PIPE ASSEMBLIES ON SKID TO PREVENT MOVEMENT DURING SHIPMENT.
 - SHRINK WRAP ENTIRE SKID FOR SHIPPING.
 - LABEL SKIDS FOR SHIPPING PER YORK DRAWING 077-11742.

REV.	DATE	EC. NO.	BY	CHK.	ENG.	ITEMS 828,210 WERE 201,205; DETAIL "H-5" REORIENTED TO SHOW COUPLING (EVEN 201)	YORK INTERNATIONAL CORPORATION	YORK, PA 17405
REV. A	19-JAN-2011	0311-1070	JSD	JSD	JSD		YORK INTERNATIONAL CORPORATION	YORK, PA 17405
REV. B	19-JAN-2011	0311-1070	JSD	JSD	JSD		YORK INTERNATIONAL CORPORATION	YORK, PA 17405
REV. C	19-JAN-2011	0311-1070	JSD	JSD	JSD		YORK INTERNATIONAL CORPORATION	YORK, PA 17405
REV. D	19-JAN-2011	0311-1070	JSD	JSD	JSD		YORK INTERNATIONAL CORPORATION	YORK, PA 17405
REV. E	19-JAN-2011	0311-1070	JSD	JSD	JSD		YORK INTERNATIONAL CORPORATION	YORK, PA 17405