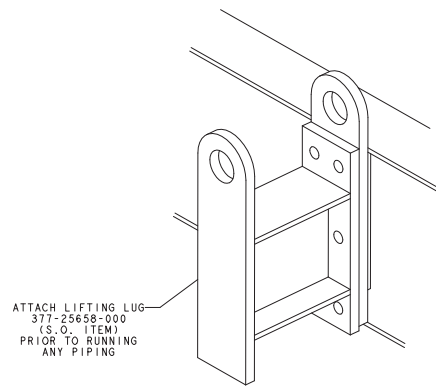


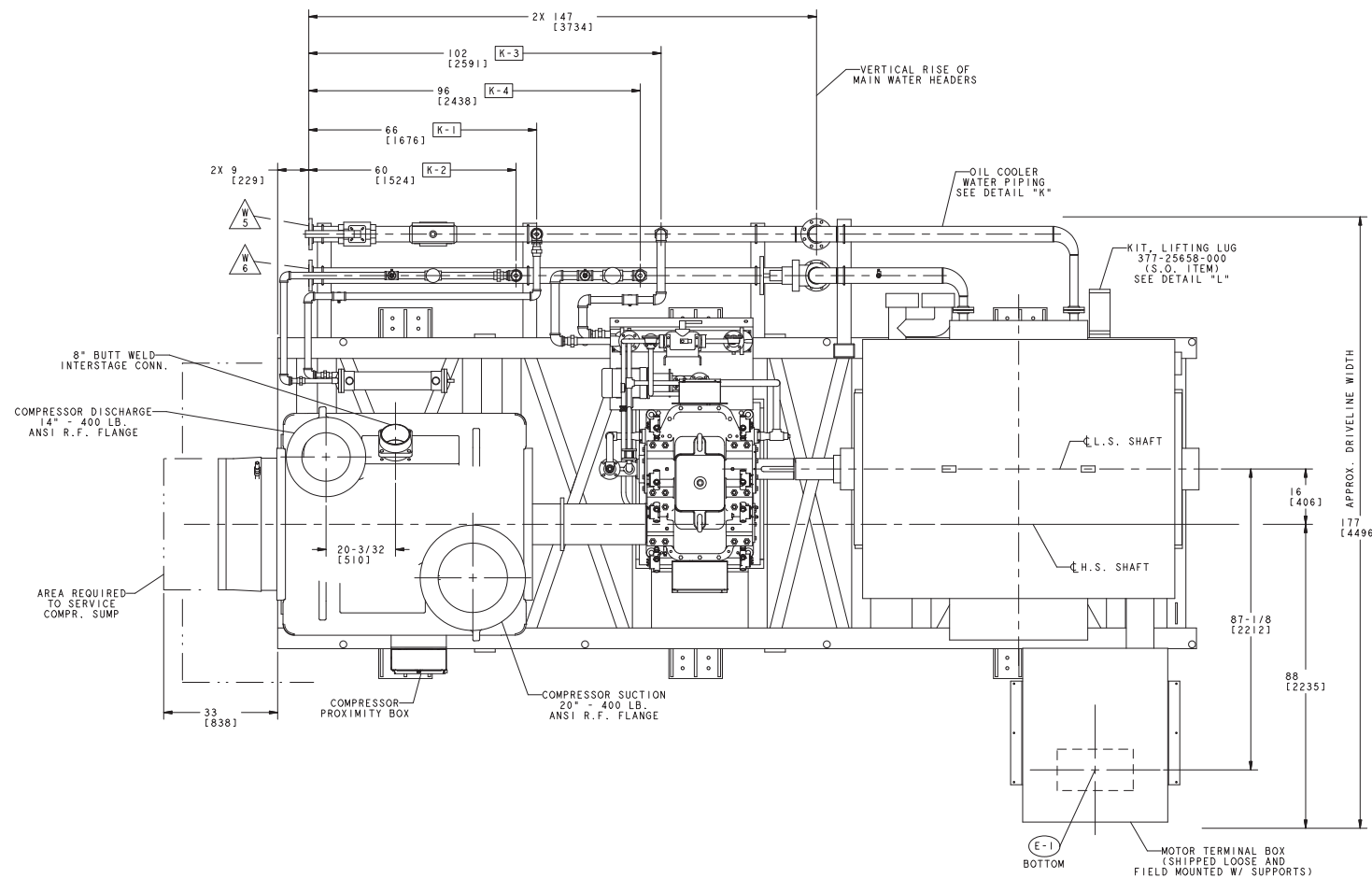
HORIZONTAL JACKING LUG
MAY BE LOCATED IN EITHER
POSITION AS SHOWN ABOVE

DETAIL "R"



ATTACH LIFTING LUG
377-25658-000
(S.O. ITEM)
PRIOR TO RUNNING
ANY PIPING

DETAIL "L"
TYP. 1 PLACE



INSTALLING CONTRACTOR CONNECTIONS

W-5	4" - 150 LB. ASME R.F. FLANGE OIL COOLER WATER PIPING INLET
W-6	4" - 150 LB. ASME R.F. FLANGE OIL COOLER WATER PIPING OUTLET
E-1	20" X 25" CUSTOMER DRILLING AREA MAIN MOTOR CONDUIT CONNECTION

PROJECT NAME KING ABDULLAH
BIN ABDULAZIZ PROJECT
THIRD SAUDI EXPANSION
OF HOLY HARAM MAKKAH
AND SURROUNDING AREAS
CENTRAL UTILITY COMPLEX
AND SERVICE TUNNEL

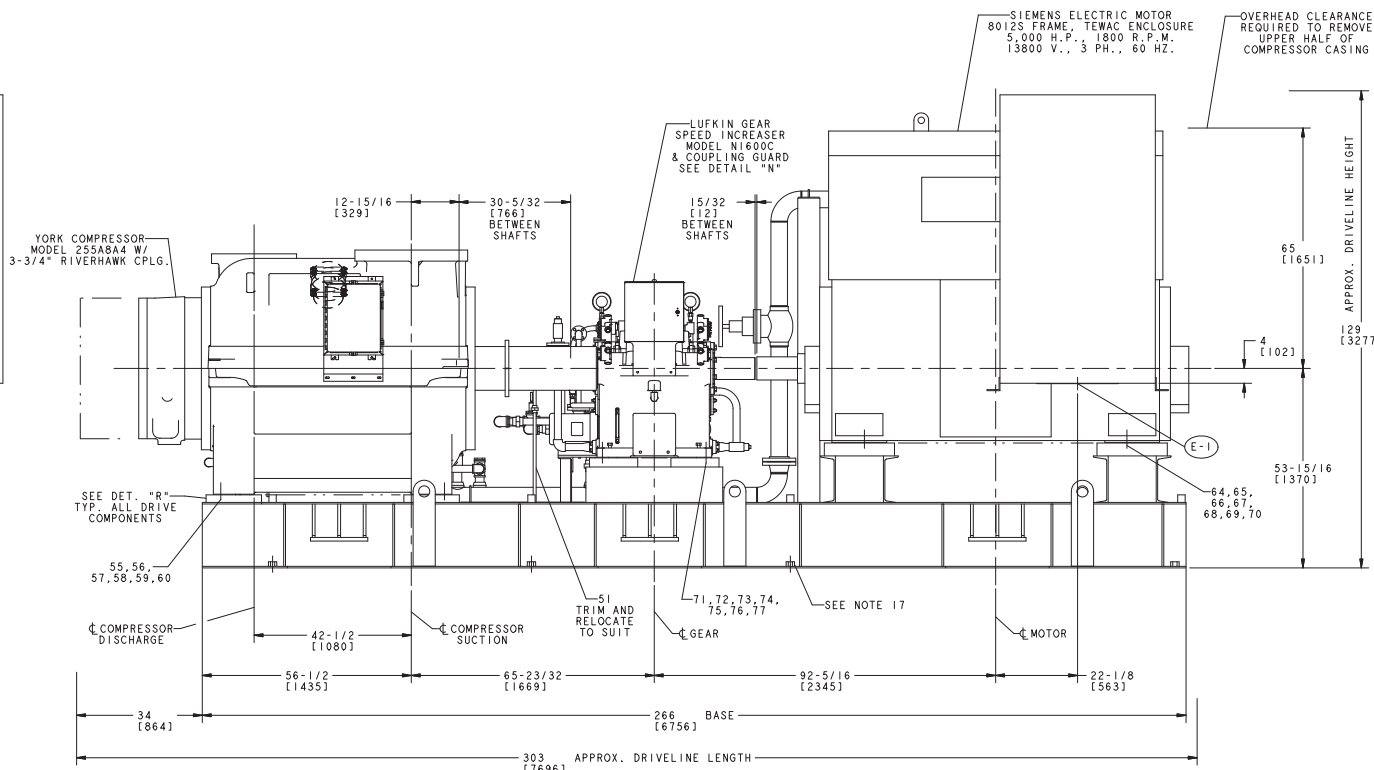
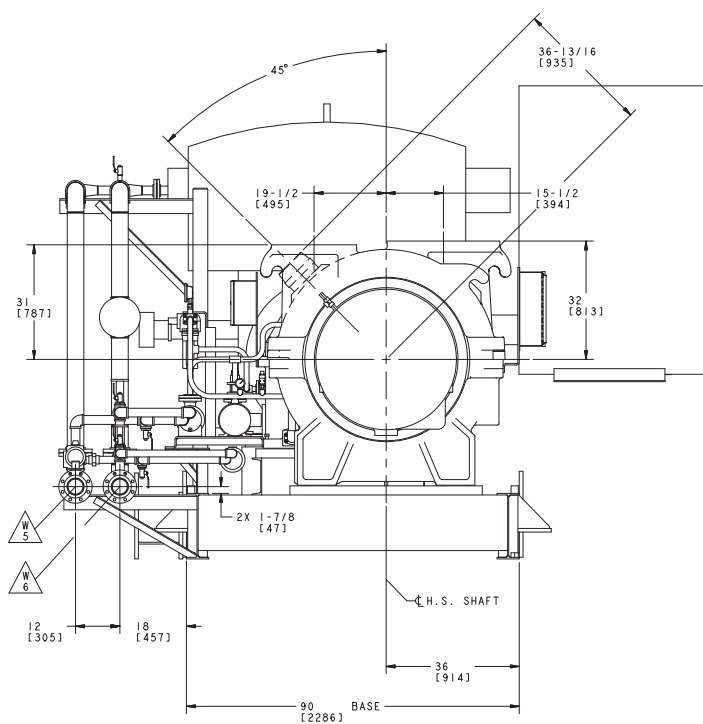
PURCHASE ORDER NO. JSFP-2792 / JSFP-2947

SUPPLIER YORK, A JOHNSON CONTROLS CO.
YORK, PA.

YORK ORDER NO. 0J060251-11 THRU -18
1J060034-03 THRU -10

EQUIPMENT TITAN OM 5090 R-134a
GEAR/MOTOR DRIVE CHILLER

CERTIFIED FOR CONSTRUCTION
YORK
INTERNATIONAL CORP.
DATE 10/27/10 BY A.R.SHANKO
REV.C A.R.S. 05/09/11



YORK COMPRESSOR MODEL 255A844 W/ 3-3/4" RIVERHAWK CPLG.

SEE DET. "R" TYP. ALL DRIVE COMPONENTS

NOTE: DIMENSIONS INDICATED THUS () ARE IN MILLIMETERS ALL OTHERS ARE IN FEET AND/OR INCHES

REV.	DATE	EC. NO.	DR.	CHK.	ENG.
C	08-MAY-2011	C511-0238	JJP	JJP	
REVISION					

CONTINUED

		YORK INTERNATIONAL CORPORATION YORK, PA 17405	
DIMENSIONS ARE IN INCHES UNLESS OTHERWISE SPECIFIED TOLERANCES PER ENG. STD. W-202	ENG. UNIT ENG. STD. 04-5090	MATERIAL ENG. STD. 04-5090	PART NO. 077-32079-000
DRAWN: J.D. DUTTERER 18-OCT-2010 CHECKED: J.D. DUTTERER 18-OCT-2010 SCALE: 1:1	DATE: 18-OCT-2010 CAGE NUMBER: 66935	REFRIGERANT: 134a DRAWING NUMBER: 077-32079-000	REVISED BY: J.D. DUTTERER 27-OCT-2010 SHEET 1 OF 3

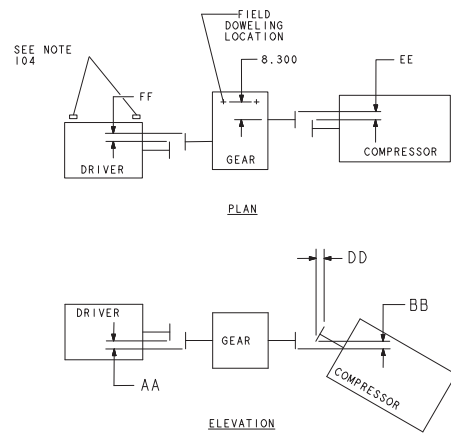
SCREW SIZE INCHES	TIGHTENING TORQUE	
	FT.-LBS.	NEWTON-METER
1/2-13	75	102
5/8-11	151	205
3/4-10	266	362
7/8-9	400	544
1-8	500	680
1-1/8-8	500	680
1-1/4-8	500	680
1-1/2-8	500	680

- NOTES:
131. TORQUES ARE PREDICTED ON DEVELOPING 75% OF PROOF LOADS FOR SAE J429 GRADE 5 SCREWS, EXCEPT FOR THOSE 1" THRU 1-1/2" WHICH ARE BASED ON REASONABLE TORQUES THAT CAN BE FACTORY AND FIELD APPLIED.
132. SCREWS ARE TO BE INSTALLED DRY.

**DRIVELINE COMPONENT
BOLTING TORQUE**

ENGLISH = INCHES					
AMBIENT TEMP.	AA	BB	DD	EE	FF
40°F	.0103	.026	.002	.0039	.0251
60°F	.0072	.0258	.002	.0029	.022
80°F	.0041	.0256	.002	.0018	.0168
100°F	.0011	.0253	.002	.0008	.0157
120°F	-.002	.0251	.002	-.0003	.0126

METRIC = mm					
AMBIENT TEMP.	AA	BB	DD	EE	FF
10°C	.222	.657	.051	.086	.597
20°C	.152	.652	.051	.062	.526
30°C	.082	.647	.051	.038	.455
40°C	.011	.643	.051	.014	.384
50°C	-.059	.639	.051	-.01	.313



COMPR. AXIAL SHAFT GROWTH = 0.011" [0.280] AT 50°F [10°C] AMBIENT
-0.005" [-0.127] AT 104°F [40°C] AMBIENT

- NOTES:
101. FIGURES ARE DISPLAYED AT 68°F [20°C] AMBIENT TEMPERATURE.
102. DIAL INDICATOR READING SHOULD BE TWICE SHAFT MISALIGNMENT, EXCEPT TILT.
103. A HOT FINAL ALIGNMENT MUST BE MADE WHILE COMPONENTS ARE NEAR OPERATING TEMPERATURE.
104. FIGURES ARE BASED ON SECURING MOTOR AND COMPRESSOR WITH HORIZONTAL JACKING SCREWS, GEAR WITH DOWELS WHERE SHOWN. MISALIGNMENT MEASURES FROM RIM OF COUPLING HUBS. TOLERANCE ±.001.

COLD MISALIGNMENT

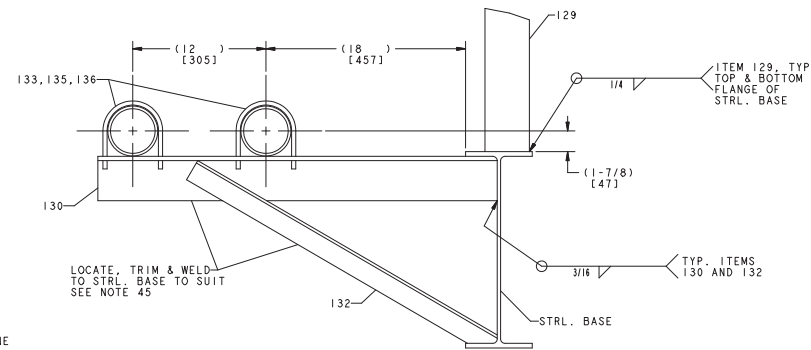
YORK REFERENCE DRAWINGS			
DWG. NO.	DESCRIPTION	DWG. NO.	DESCRIPTION
077-25017-000	COMPONENTS RIGGING	081-17976-000	COMPR. ERECTING
077-10989-000	BOLT TORQUE INSTRUCTION	081-17944-000	COMPR. LUBE OIL FLOW DIAG.
076-78525-000	FLOW DIAG. LEGEND	077-25857-000	INSTRUCTIONS, PACKAGING DRIVELINE
077-31585-000	REFRIG. & WATER FLOW DIAG.	099-02818-000	INSTRUCTION, WELDING AND BRAZING
077-32303-000	UNIT, TITAN, OM-5090		

APPROX. OPERATING WEIGHTS		LBS	[KG]
COMPR.	-----	28,000	12,701
MOTOR	-----	26,800	12,156
SPEED INCREASER	-----	4,100	1,860
DRIVE BASE	-----	11,850	5,375
MISC.	-----	4,070	1,846
TOTAL	-----	74,820	33,938

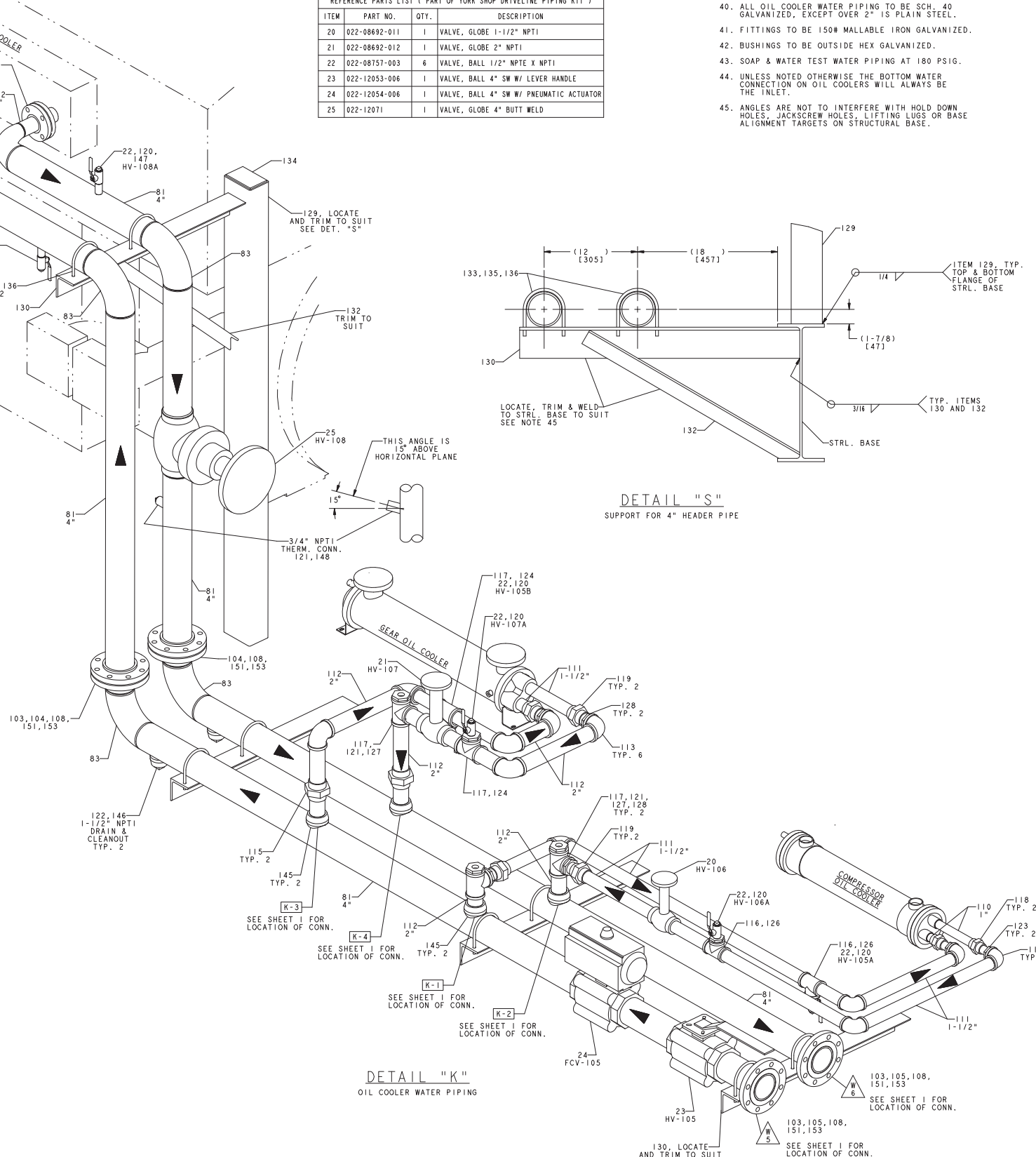
REFERENCE PARTS LIST (PART OF YORK SHOP DRIVELINE PIPING KIT)			
ITEM	PART NO.	QTY.	DESCRIPTION
20	022-08692-011	1	VALVE, GLOBE 1-1/2" NPT1
21	022-08692-012	1	VALVE, GLOBE 2" NPT1
22	022-08757-003	6	VALVE, BALL 1/2" NPT X NPT1
23	022-12053-006	1	VALVE, BALL 4" SW W/ LEVER HANDLE
24	022-12054-006	1	VALVE, BALL 4" SW W/ PNEUMATIC ACTUATOR
25	022-12071	1	VALVE, GLOBE 4" BUTT WELD

NOTES:

40. ALL OIL COOLER WATER PIPING TO BE SCH. 40 GALVANIZED, EXCEPT OVER 2" IS PLAIN STEEL.
41. FITTINGS TO BE 150# MALLABLE IRON GALVANIZED.
42. BUSHINGS TO BE OUTSIDE HEX GALVANIZED.
43. SOAP & WATER TEST WATER PIPING AT 180 PSIG.
44. UNLESS NOTED OTHERWISE THE BOTTOM WATER CONNECTION ON OIL COOLERS WILL ALWAYS BE THE INLET.
45. ANGLES ARE NOT TO INTERFERE WITH HOLD DOWN HOLES, JACKSCREW HOLES, LIFTING LUGS OR BASE ALIGNMENT TARGETS ON STRUCTURAL BASE.



DETAIL "S"
SUPPORT FOR 4" HEADER PIPE



DETAIL "K"
OIL COOLER WATER PIPING

NOTE: DIMENSIONS INDICATED THUS () ARE IN MILLIMETERS ALL OTHERS ARE IN FEET AND/OR INCHES

YORK INTERNATIONAL CORPORATION		YORK, PA 17405	
REV. DATE EC. NO. DR. CHG. ENG.	DWG. UNIT	MATERIAL	SCALE: 1/8" = 1"
C 08-MAY-2011 CS11-0238 JJP JJP	DRIVELINE	ENG. STD. 0M-5090	1/8" = 1"
REVISION	REVISION	REVISION	REVISION
REVISE "EE" VALUE IN COLD MISALIGNMENT CHART ON SHEET 2	REVISION	REVISION	REVISION
	077-32079-000	077-32079-000	077-32079-000
	077-32079-000	077-32079-000	077-32079-000