

D

C

B

A

D

C

B

A

NOTE- PURGE CONN. 3/4 NPTI (SEE NOTE 17)

F/D PIPING RELIEF VALVE 5/8" O.D. FLARE SEE NOTE 16

SYSTEM RELIEF, SEE DETAIL "A"

GAS PUMPOUT CONN., 1-1/2" S.W.

HOT GAS BY-PASS FROM CONDENSER

HOT GAS BY-PASS VALVE

NOTE: SHOWN IN STANDARD LOCATION. LIQUID INJECTION MAY BE ROTATED 180°. FOR EXACT LOCATION SEE UNIT ARRANGEMENT DRAWING. SEE NOTE 6.

LIQUID INJECTION CONN., 2-1/2" B.W.

EVAPORATOR HOT GAS INLET

634 CHARGING CONN. 2" NPTI, PLUGGED

EVAP. LIQUID PUMPOUT CONN. 2" S.W.

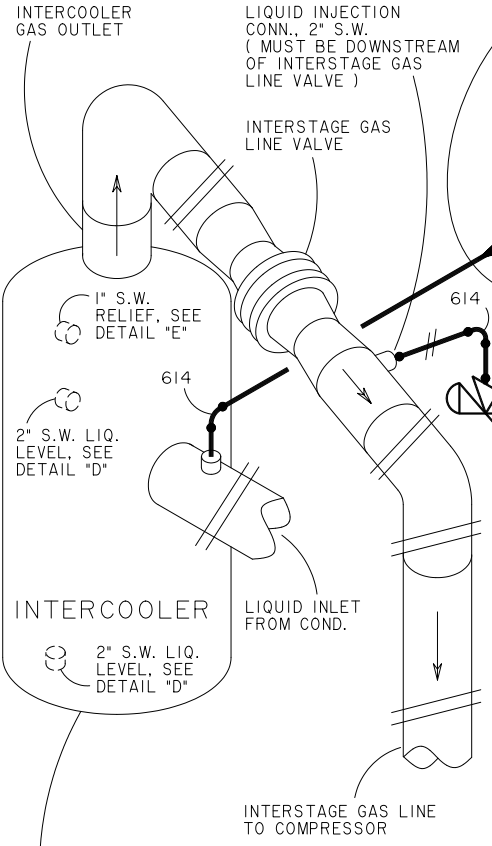
LIQUID PUMPOUT CONN., 2" S.W.

LEGEND

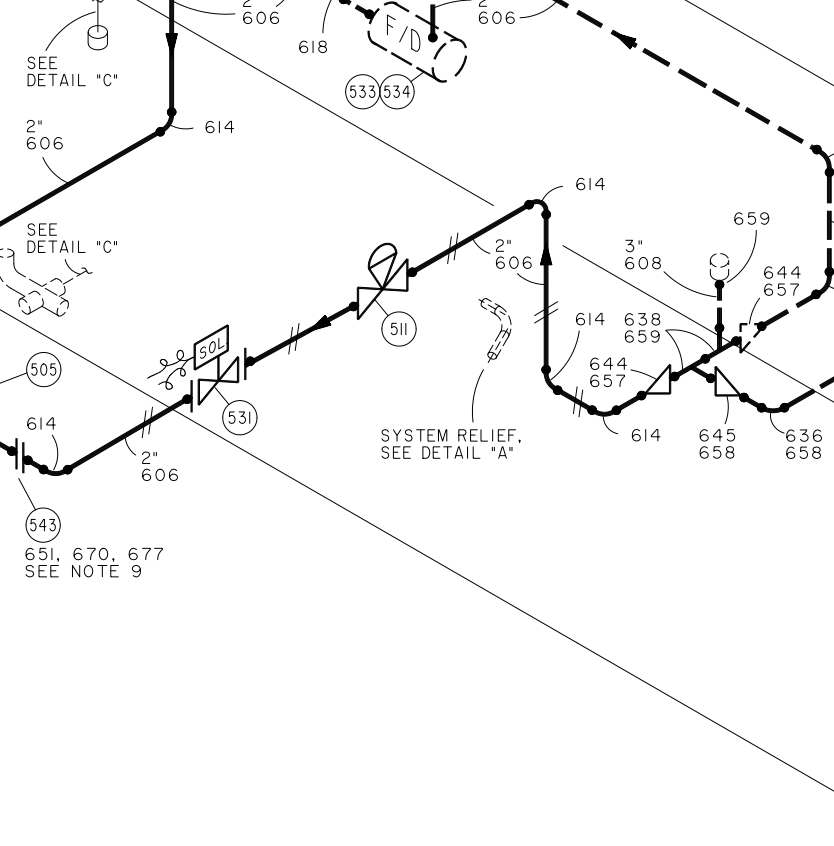
- WELD
- BRAZE
- ⊕ SCREW
- ⊖ FLANGE
- ⊔ PIPE PLUG

PIPING LEGEND

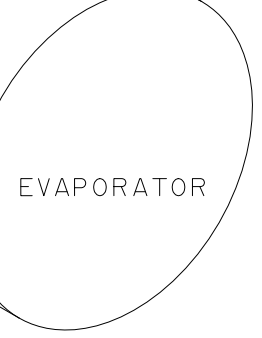
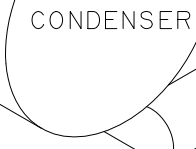
- FURNISHED BY YORK AS PART OF FACTORY ASSEMBLY.
- FURNISHED BY YORK FOR FIELD FABRICATION/ASSEMBLY.
- RELATED PIPING DETAILED ON OTHER DRAWINGS
- - - EXTERNAL PIPING CONNECTIONS, NOT FURNISHED BY YORK
- PIPING TO BE INSULATED, SEE DWG. 076-98761D.



NOTE: SHOWN IN STANDARD LOCATION. FOR EXACT LOCATION SEE UNIT ARRANGEMENT DRAWING. SEE NOTE 6.



LIQUID INJECTION PIPING



YORK INTERNATIONAL CORPORATION
YORK, PA. 17405

DIMENSIONS ARE IN INCHES DO NOT SCALE TOLERANCES PER ENG. STD. M-282 WELDING PER ENG. STD. M-30 REF. DWG.	KIT, PIPING, SYSTEM OM - 5090 REFRIGERANT - 134a NEMA - I	MATERIAL TYPE _____ ENG. STD. _____ PART NO. _____ CUT SIZE _____
NAME DATE DR. M E BAUGHMAN 09-22-10 APPR. M E BAUGHMAN 09-24-10 SCALE: NTS	SIZE CAGE NO D 66935	DRAWING NUMBER 023-25214-002
WT. =	LBS.	ORIG. NO. 023-25214-002 SHEET 2 OF 5

REV. LEV.	DATE	REVISION RECORD	CHG. NO.	DR.	CK.	REV. LEV.	DATE	REVISION RECORD	CHG. NO.	DR.	CK.	REV. LEV.	DATE	REVISION RECORD	CHG. NO.	DR.	CK.
-		NEW	CS10 0365														
A	2-22-10	CHANGED TO OM-5090 IN TITLE.	CS10 0523	MEB	MEB												